



Full wwPDB X-ray Structure Validation Report ⓘ

Feb 1, 2016 – 07:48 AM GMT

PDB ID : 3CAV
Title : Crystal structure of 5beta-reductase (AKR1D1) in complex with NADP+ and 5beta-pregnan-3,20-dione
Authors : Faucher, F.; Cantin, L.; Breton, R.
Deposited on : 2008-02-20
Resolution : 1.90 Å(reported)

This is a Full wwPDB X-ray Structure Validation Report for a publicly released PDB entry.
We welcome your comments at validation@mail.wwpdb.org
A user guide is available at
<http://wwpdb.org/validation/2016/XrayValidationReportHelp>
with specific help available everywhere you see the ⓘ symbol.

The following versions of software and data (see [references ⓘ](#)) were used in the production of this report:

MolProbity : 4.02b-467
Mogul : 1.7 (RC4), CSD as536be (2015)
Xtriage (Phenix) : 1.9-1692
EDS : rb-20026688
Percentile statistics : 20151230.v01 (using entries in the PDB archive December 30th 2015)
Refmac : 5.8.0135
CCP4 : 6.5.0
Ideal geometry (proteins) : Engh & Huber (2001)
Ideal geometry (DNA, RNA) : Parkinson et al. (1996)
Validation Pipeline (wwPDB-VP) : trunk26865

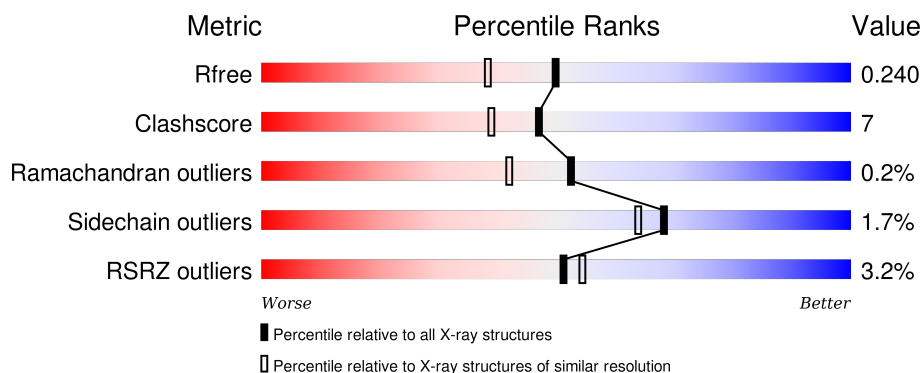
1 Overall quality at a glance

The following experimental techniques were used to determine the structure:

X-RAY DIFFRACTION

The reported resolution of this entry is 1.90 Å.

Percentile scores (ranging between 0-100) for global validation metrics of the entry are shown in the following graphic. The table shows the number of entries on which the scores are based.



Metric	Whole archive (#Entries)	Similar resolution (#Entries, resolution range(Å))
R_{free}	91344	4755 (1.90-1.90)
Clashscore	102246	5398 (1.90-1.90)
Ramachandran outliers	100387	5338 (1.90-1.90)
Sidechain outliers	100360	5339 (1.90-1.90)
RSRZ outliers	91569	4766 (1.90-1.90)

The table below summarises the geometric issues observed across the polymeric chains and their fit to the electron density. The red, orange, yellow and green segments on the lower bar indicate the fraction of residues that contain outliers for ≥ 3 , 2, 1 and 0 types of geometric quality criteria. A grey segment represents the fraction of residues that are not modelled. The numeric value for each fraction is indicated below the corresponding segment, with a dot representing fractions $\leq 5\%$. The upper red bar (where present) indicates the fraction of residues that have poor fit to the electron density. The numeric value is given above the bar.

Mol	Chain	Length	Quality of chain
1	A	326	<div> <div>2%</div> <div>84%</div> <div>15%</div> </div>
1	B	326	<div> <div>5%</div> <div>83%</div> <div>16%</div> </div>

The following table lists non-polymeric compounds, carbohydrate monomers and non-standard residues in protein, DNA, RNA chains that are outliers for geometric or electron-density-fit criteria:

Mol	Type	Chain	Res	Chirality	Geometry	Clashes	Electron density
3	CI2	A	328	-	-	-	X
4	BME	A	329	-	-	-	X
5	EDO	A	330	-	-	-	X
5	EDO	A	331	-	-	-	X
5	EDO	B	330	-	-	-	X
5	EDO	B	331	-	-	-	X

2 Entry composition [i](#)

There are 6 unique types of molecules in this entry. The entry contains 6106 atoms, of which 0 are hydrogens and 0 are deuteriums.

In the tables below, the ZeroOcc column contains the number of atoms modelled with zero occupancy, the AltConf column contains the number of residues with at least one atom in alternate conformation and the Trace column contains the number of residues modelled with at most 2 atoms.

- Molecule 1 is a protein called 3-oxo-5-beta-steroid 4-dehydrogenase.

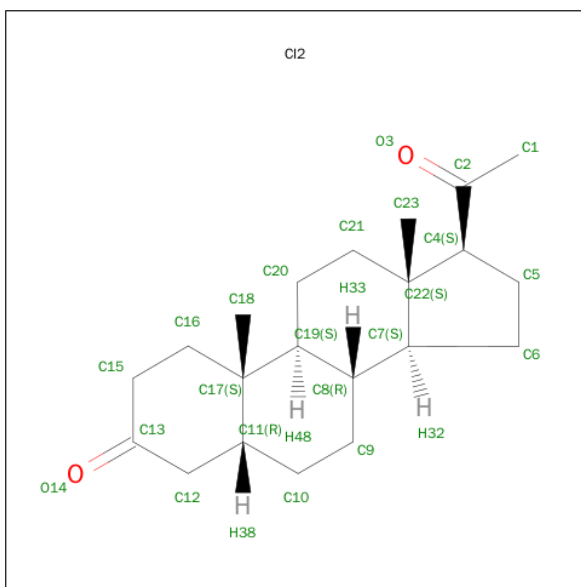
Mol	Chain	Residues	Atoms					ZeroOcc	AltConf	Trace
1	A	325	Total	C	N	O	S	0	5	0
			2669	1707	464	487	11			
1	B	325	Total	C	N	O	S	0	3	0
			2653	1696	461	485	11			

- Molecule 2 is NADP NICOTINAMIDE-ADENINE-DINUCLEOTIDE PHOSPHATE (three-letter code: NAP) (formula: $C_{21}H_{28}N_7O_{17}P_3$).



Mol	Chain	Residues	Atoms					ZeroOcc	AltConf
2	A	1	Total	C	N	O	P	0	0
			48	21	7	17	3		
2	B	1	Total	C	N	O	P	0	0
			48	21	7	17	3		

- Molecule 3 is (5BETA)-PREGNANE-3,20-DIONE (three-letter code: CI2) (formula: $C_{21}H_{32}O_2$).



Mol	Chain	Residues	Atoms			ZeroOcc	AltConf
3	A	1	Total	C	O	0	0
			23	21	2		
3	B	1	Total	C	O	0	0
			23	21	2		

- Molecule 4 is BETA-MERCAPTOETHANOL (three-letter code: BME) (formula: C_2H_6OS).



Mol	Chain	Residues	Atoms				ZeroOcc	AltConf
4	A	1	Total	C	O	S	0	0
			4	2	1	1		
4	B	1	Total	C	O	S	0	0
			4	2	1	1		

- Molecule 5 is 1,2-ETHANEDIOL (three-letter code: EDO) (formula: C₂H₆O₂).



Mol	Chain	Residues	Atoms			ZeroOcc	AltConf
5	A	1	Total	C	O	0	0
			4	2	2		
5	A	1	Total	C	O	0	0
			4	2	2		
5	A	1	Total	C	O	0	0
			4	2	2		
5	B	1	Total	C	O	0	0
			4	2	2		
5	B	1	Total	C	O	0	0
			4	2	2		

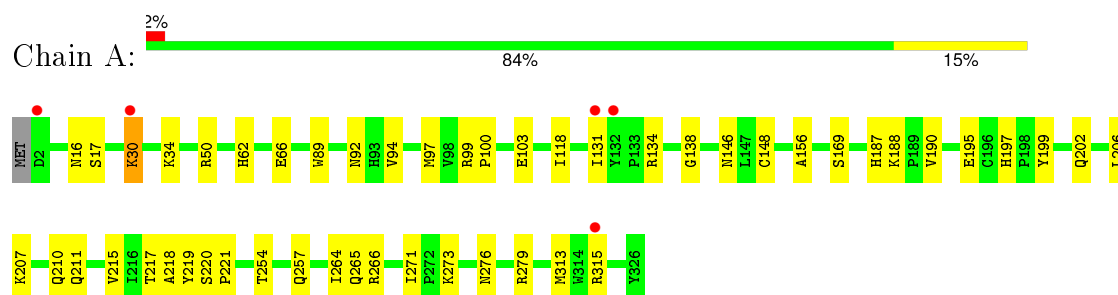
- Molecule 6 is water.

Mol	Chain	Residues	Atoms		ZeroOcc	AltConf
6	A	337	Total	O	0	0
			337	337		
6	B	277	Total	O	0	0
			277	277		

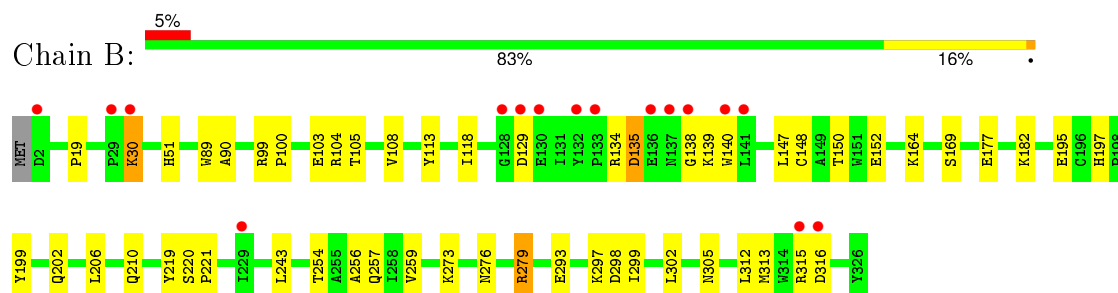
3 Residue-property plots [i](#)

These plots are drawn for all protein, RNA and DNA chains in the entry. The first graphic for a chain summarises the proportions of errors displayed in the second graphic. The second graphic shows the sequence view annotated by issues in geometry and electron density. Residues are color-coded according to the number of geometric quality criteria for which they contain at least one outlier: green = 0, yellow = 1, orange = 2 and red = 3 or more. A red dot above a residue indicates a poor fit to the electron density ($\text{RSRZ} > 2$). Stretches of 2 or more consecutive residues without any outlier are shown as a green connector. Residues present in the sample, but not in the model, are shown in grey.

- Molecule 1: 3-oxo-5-beta-steroid 4-dehydrogenase



- Molecule 1: 3-oxo-5-beta-steroid 4-dehydrogenase



4 Data and refinement statistics

Property	Value	Source
Space group	P 21 21 21	Depositor
Cell constants a, b, c, α , β , γ	50.65Å 111.27Å 130.89Å 90.00° 90.00° 90.00°	Depositor
Resolution (Å)	19.72 – 1.90 19.72 – 1.90	Depositor EDS
% Data completeness (in resolution range)	94.3 (19.72-1.90) 94.4 (19.72-1.90)	Depositor EDS
R_{merge}	0.07	Depositor
R_{sym}	0.06	Depositor
$\langle I/\sigma(I) \rangle$ ¹	3.15 (at 1.90Å)	Xtriage
Refinement program	CNS 1.1	Depositor
R, R_{free}	0.207 , 0.236 0.210 , 0.240	Depositor DCC
R_{free} test set	2831 reflections (5.07%)	DCC
Wilson B-factor (Å ²)	13.0	Xtriage
Anisotropy	0.146	Xtriage
Bulk solvent k_{sol} (e/Å ³), B_{sol} (Å ²)	0.31 , 55.8	EDS
Estimated twinning fraction	No twinning to report.	Xtriage
L-test for twinning ²	$\langle L \rangle = 0.46$, $\langle L^2 \rangle = 0.29$	Xtriage
Outliers	1 of 55806 reflections (0.002%)	Xtriage
F_o, F_c correlation	0.93	EDS
Total number of atoms	6106	wwPDB-VP
Average B, all atoms (Å ²)	13.0	wwPDB-VP

Xtriage's analysis on translational NCS is as follows: *The largest off-origin peak in the Patterson function is 3.78% of the height of the origin peak. No significant pseudotranslation is detected.*

¹Intensities estimated from amplitudes.

²Theoretical values of $\langle |L| \rangle$, $\langle L^2 \rangle$ for acentric reflections are 0.5, 0.375 respectively for untwinned datasets, and 0.333, 0.2 for perfectly twinned datasets.

5 Model quality

5.1 Standard geometry

Bond lengths and bond angles in the following residue types are not validated in this section: CI2, NAP, EDO, BME

The Z score for a bond length (or angle) is the number of standard deviations the observed value is removed from the expected value. A bond length (or angle) with $|Z| > 5$ is considered an outlier worth inspection. RMSZ is the root-mean-square of all Z scores of the bond lengths (or angles).

Mol	Chain	Bond lengths		Bond angles	
		RMSZ	$\# Z > 5$	RMSZ	$\# Z > 5$
1	A	0.34	0/2734	0.57	0/3707
1	B	0.34	0/2718	0.56	0/3684
All	All	0.34	0/5452	0.57	0/7391

Chiral center outliers are detected by calculating the chiral volume of a chiral center and verifying if the center is modelled as a planar moiety or with the opposite hand. A planarity outlier is detected by checking planarity of atoms in a peptide group, atoms in a mainchain group or atoms of a sidechain that are expected to be planar.

Mol	Chain	#Chirality outliers	#Planarity outliers
1	A	0	1
1	B	0	1
All	All	0	2

There are no bond length outliers.

There are no bond angle outliers.

There are no chirality outliers.

All (2) planarity outliers are listed below:

Mol	Chain	Res	Type	Group
1	A	219	TYR	Sidechain
1	B	219	TYR	Sidechain

5.2 Too-close contacts

In the following table, the Non-H and H(model) columns list the number of non-hydrogen atoms and hydrogen atoms in the chain respectively. The H(added) column lists the number of hydrogen atoms added and optimized by MolProbity. The Clashes column lists the number of clashes within the asymmetric unit, whereas Symm-Clashes lists symmetry related clashes.

Mol	Chain	Non-H	H(model)	H(added)	Clashes	Symm-Clashes
1	A	2669	0	2667	43	0
1	B	2653	0	2650	38	0
2	A	48	0	25	1	0
2	B	48	0	25	2	0
3	A	23	0	32	1	0
3	B	23	0	32	1	0
4	A	4	0	5	1	0
4	B	4	0	6	1	0
5	A	12	0	15	3	0
5	B	8	0	10	0	0
6	A	337	0	0	7	0
6	B	277	0	0	3	0
All	All	6106	0	5467	82	0

The all-atom clashscore is defined as the number of clashes found per 1000 atoms (including hydrogen atoms). The all-atom clashscore for this structure is 7.

All (82) close contacts within the same asymmetric unit are listed below, sorted by their clash magnitude.

Atom-1	Atom-2	Interatomic distance (Å)	Clash overlap (Å)
1:B:148:CYS:SG	4:B:329:BME:S2	2.35	1.23
1:A:276:ASN:HD22	1:A:279:ARG:H	1.27	0.80
1:B:243:LEU:HD23	1:B:302[A]:LEU:HD21	1.63	0.79
1:B:316:ASP:HB3	6:B:823:HOH:O	1.87	0.74
1:A:99:ARG:HB2	5:A:330:EDO:H11	1.67	0.74
1:A:254:THR:H	1:A:257:GLN:HE21	1.32	0.74
1:B:276:ASN:HD22	1:B:279:ARG:H	1.34	0.72
1:A:92:ASN:HA	1:A:97:MET:HE1	1.73	0.68
1:B:254:THR:H	1:B:257:GLN:HE21	1.46	0.64
1:B:293:GLU:O	1:B:297:LYS:HG3	1.98	0.63
1:B:299:ILE:HA	1:B:302[A]:LEU:HD23	1.82	0.62
1:A:215[B]:VAL:HG13	6:A:424:HOH:O	1.99	0.62
1:A:197:HIS:HD2	1:A:199:TYR:H	1.49	0.61
1:B:197:HIS:HD2	1:B:199:TYR:H	1.49	0.60
1:B:206:LEU:O	1:B:210:GLN:HG3	2.02	0.59
1:A:254:THR:H	1:A:257:GLN:NE2	2.00	0.58
1:B:134:ARG:HD3	1:B:140:TRP:CE2	2.38	0.58
1:B:273:LYS:HD3	1:B:273:LYS:C	2.25	0.58
1:B:147:LEU:HA	1:B:150[A]:THR:HG22	1.85	0.57
1:A:271[B]:ILE:HD13	1:A:271[B]:ILE:H	1.69	0.57
1:B:118:ILE:HD12	1:B:169:SER:HB2	1.86	0.57
1:B:254:THR:H	1:B:257:GLN:NE2	2.02	0.57

Continued on next page...

Continued from previous page...

Atom-1	Atom-2	Interatomic distance (Å)	Clash overlap (Å)
1:B:134:ARG:HD2	1:B:138:GLY:O	2.05	0.56
1:A:315:ARG:HB3	1:A:315:ARG:HH11	1.70	0.56
1:A:50:ARG:HG3	5:A:331:EDO:H21	1.88	0.56
1:B:147:LEU:O	1:B:150[A]:THR:HG22	2.06	0.56
1:A:273:LYS:HD3	1:A:273:LYS:C	2.27	0.54
1:A:217:THR:CG2	1:A:271[B]:ILE:HD12	2.37	0.54
1:A:99:ARG:HB3	1:A:100:PRO:HD3	1.91	0.53
1:B:19:PRO:HB2	1:B:51:HIS:HB2	1.91	0.53
1:A:217:THR:HG22	1:A:271[B]:ILE:HD12	1.90	0.52
1:B:113:TYR:CE1	1:B:164:LYS:HD2	2.45	0.52
1:A:271[B]:ILE:N	1:A:271[B]:ILE:HD13	2.24	0.52
1:A:195:GLU:OE2	1:A:197:HIS:HE1	1.92	0.52
1:A:16[B]:ASN:ND2	6:A:636:HOH:O	2.43	0.52
1:B:312:LEU:O	1:B:315:ARG:HG2	2.10	0.51
1:A:207:LYS:O	1:A:211:GLN:HG3	2.11	0.51
1:A:266:ARG:HD2	6:A:526:HOH:O	2.10	0.50
1:A:146:ASN:HB3	6:A:628:HOH:O	2.11	0.50
1:A:118:ILE:HD12	1:A:169:SER:HB2	1.94	0.49
1:B:134:ARG:HD3	1:B:140:TRP:CD2	2.47	0.49
1:A:218:ALA:O	1:A:271[B]:ILE:HD13	2.12	0.48
1:A:134:ARG:HD2	1:A:138:GLY:O	2.12	0.48
1:B:30:LYS:NZ	1:B:30:LYS:HB2	2.29	0.48
1:B:135:ASP:OD2	1:B:139:LYS:HB3	2.14	0.48
1:B:99:ARG:O	1:B:103:GLU:HG3	2.13	0.47
1:B:302[A]:LEU:HD12	6:B:665:HOH:O	2.15	0.47
1:A:315:ARG:HD3	6:A:668:HOH:O	2.14	0.47
1:A:148:CYS:H	4:A:329:BME:H12	1.79	0.47
1:B:152:GLU:CG	1:B:182:LYS:HE3	2.45	0.46
1:B:177:GLU:HG2	6:B:729:HOH:O	2.16	0.46
1:B:134:ARG:HG3	1:B:134:ARG:HH11	1.81	0.46
1:A:220:SER:N	1:A:221:PRO:CD	2.77	0.46
1:A:188:LYS:HE2	6:A:368:HOH:O	2.16	0.46
1:A:187:HIS:HD2	6:A:505:HOH:O	1.99	0.45
1:B:104:ARG:O	1:B:108:VAL:HG23	2.17	0.45
1:B:220:SER:N	1:B:221:PRO:CD	2.80	0.44
1:B:273:LYS:O	2:B:327:NAP:H8A	2.17	0.44
1:B:195:GLU:OE2	1:B:197:HIS:HE1	2.00	0.44
1:B:279:ARG:HG2	2:B:327:NAP:C5A	2.48	0.44
1:B:89:TRP:CG	1:B:90:ALA:N	2.87	0.43
1:B:298:ASP:O	1:B:302[A]:LEU:CD2	2.66	0.43
1:A:271[B]:ILE:O	1:A:271[B]:ILE:HG12	2.19	0.43

Continued on next page...

Continued from previous page...

Atom-1	Atom-2	Interatomic distance (Å)	Clash overlap (Å)
1:A:156:ALA:HB3	5:A:330:EDO:O1	2.19	0.43
1:B:99:ARG:HB3	1:B:100:PRO:HD3	2.00	0.43
1:A:94:VAL:HG23	1:A:97:MET:HE2	2.01	0.43
1:A:99:ARG:O	1:A:103:GLU:HG3	2.18	0.42
1:A:30:LYS:HB2	1:A:30:LYS:NZ	2.34	0.42
1:A:315:ARG:HB3	1:A:315:ARG:NH1	2.34	0.42
1:A:207:LYS:HZ1	1:B:129:ASP:CG	2.23	0.42
1:A:206:LEU:O	1:A:210:GLN:HG3	2.19	0.42
3:B:328:CI2:H49	3:B:328:CI2:H53	1.83	0.41
1:A:16[B]:ASN:CG	1:A:17:SER:N	2.73	0.41
1:A:190:VAL:O	1:A:215[B]:VAL:HG12	2.20	0.41
1:A:62:HIS:O	1:A:66:GLU:HG3	2.21	0.41
1:B:256:ALA:O	1:B:259:VAL:HG22	2.20	0.41
1:B:30:LYS:NZ	1:B:30:LYS:CB	2.83	0.41
1:A:264:ILE:HG13	1:A:265:GLN:N	2.36	0.41
3:A:328:CI2:H49	3:A:328:CI2:H53	1.84	0.41
1:A:273:LYS:O	2:A:327:NAP:H8A	2.21	0.40
1:A:89:TRP:CD1	1:A:131:ILE:HG23	2.56	0.40

There are no symmetry-related clashes.

5.3 Torsion angles [i](#)

5.3.1 Protein backbone [i](#)

In the following table, the Percentiles column shows the percent Ramachandran outliers of the chain as a percentile score with respect to all X-ray entries followed by that with respect to entries of similar resolution.

The Analysed column shows the number of residues for which the backbone conformation was analysed, and the total number of residues.

Mol	Chain	Analysed	Favoured	Allowed	Outliers	Percentiles	
1	A	328/326 (101%)	318 (97%)	10 (3%)	0	100	100
1	B	326/326 (100%)	316 (97%)	9 (3%)	1 (0%)	46	35
All	All	654/652 (100%)	634 (97%)	19 (3%)	1 (0%)	52	42

All (1) Ramachandran outliers are listed below:

Mol	Chain	Res	Type
1	B	135	ASP

5.3.2 Protein sidechains [i](#)

In the following table, the Percentiles column shows the percent sidechain outliers of the chain as a percentile score with respect to all X-ray entries followed by that with respect to entries of similar resolution.

The Analysed column shows the number of residues for which the sidechain conformation was analysed, and the total number of residues.

Mol	Chain	Analysed	Rotameric	Outliers	Percentiles	
1	A	294/290 (101%)	290 (99%)	4 (1%)	74	71
1	B	292/290 (101%)	286 (98%)	6 (2%)	61	55
All	All	586/580 (101%)	576 (98%)	10 (2%)	68	64

All (10) residues with a non-rotameric sidechain are listed below:

Mol	Chain	Res	Type
1	A	30	LYS
1	A	34	LYS
1	A	202	GLN
1	A	313	MET
1	B	30	LYS
1	B	105	THR
1	B	202	GLN
1	B	279	ARG
1	B	305	ASN
1	B	313	MET

Some sidechains can be flipped to improve hydrogen bonding and reduce clashes. All (15) such sidechains are listed below:

Mol	Chain	Res	Type
1	A	92	ASN
1	A	143	HIS
1	A	187	HIS
1	A	197	HIS
1	A	202	GLN
1	A	252	ASN
1	A	257	GLN
1	A	276	ASN

Continued on next page...

Continued from previous page...

Mol	Chain	Res	Type
1	B	59	GLN
1	B	92	ASN
1	B	187	HIS
1	B	197	HIS
1	B	202	GLN
1	B	257	GLN
1	B	276	ASN

5.3.3 RNA ⓘ

There are no RNA molecules in this entry.

5.4 Non-standard residues in protein, DNA, RNA chains ⓘ

There are no non-standard protein/DNA/RNA residues in this entry.

5.5 Carbohydrates ⓘ

There are no carbohydrates in this entry.

5.6 Ligand geometry ⓘ

11 ligands are modelled in this entry.

In the following table, the Counts columns list the number of bonds (or angles) for which Mogul statistics could be retrieved, the number of bonds (or angles) that are observed in the model and the number of bonds (or angles) that are defined in the chemical component dictionary. The Link column lists molecule types, if any, to which the group is linked. The Z score for a bond length (or angle) is the number of standard deviations the observed value is removed from the expected value. A bond length (or angle) with $|Z| > 2$ is considered an outlier worth inspection. RMSZ is the root-mean-square of all Z scores of the bond lengths (or angles).

Mol	Type	Chain	Res	Link	Bond lengths			Bond angles		
					Counts	RMSZ	$\# Z > 2$	Counts	RMSZ	$\# Z > 2$
2	NAP	A	327	-	42,52,52	1.38	7 (16%)	54,80,80	1.10	2 (3%)
3	CI2	A	328	-	26,26,26	2.51	11 (42%)	42,42,42	1.73	10 (23%)
4	BME	A	329	1	3,3,3	0.38	0	2,2,2	0.50	0
5	EDO	A	330	-	3,3,3	2.29	1 (33%)	2,2,2	0.46	0
5	EDO	A	331	-	3,3,3	2.20	1 (33%)	2,2,2	0.41	0
5	EDO	A	332	-	3,3,3	2.16	1 (33%)	2,2,2	0.41	0

Mol	Type	Chain	Res	Link	Bond lengths			Bond angles		
					Counts	RMSZ	# Z > 2	Counts	RMSZ	# Z > 2
2	NAP	B	327	-	42,52,52	1.39	7 (16%)	54,80,80	1.05	2 (3%)
3	CI2	B	328	-	26,26,26	2.51	10 (38%)	42,42,42	1.64	10 (23%)
4	BME	B	329	-	3,3,3	0.33	0	2,2,2	0.43	0
5	EDO	B	330	-	3,3,3	2.22	1 (33%)	2,2,2	0.44	0
5	EDO	B	331	-	3,3,3	2.20	1 (33%)	2,2,2	0.43	0

In the following table, the Chirals column lists the number of chiral outliers, the number of chiral centers analysed, the number of these observed in the model and the number defined in the chemical component dictionary. Similar counts are reported in the Torsion and Rings columns. '-' means no outliers of that kind were identified.

Mol	Type	Chain	Res	Link	Chirals	Torsions	Rings
2	NAP	A	327	-	-	0/27/67/67	0/5/5/5
3	CI2	A	328	-	-	0/4/62/62	0/4/4/4
4	BME	A	329	1	-	0/1/1/1	0/0/0/0
5	EDO	A	330	-	-	0/1/1/1	0/0/0/0
5	EDO	A	331	-	-	0/1/1/1	0/0/0/0
5	EDO	A	332	-	-	0/1/1/1	0/0/0/0
2	NAP	B	327	-	-	0/27/67/67	0/5/5/5
3	CI2	B	328	-	-	0/4/62/62	0/4/4/4
4	BME	B	329	-	-	0/1/1/1	0/0/0/0
5	EDO	B	330	-	-	0/1/1/1	0/0/0/0
5	EDO	B	331	-	-	0/1/1/1	0/0/0/0

All (40) bond length outliers are listed below:

Mol	Chain	Res	Type	Atoms	Z	Observed(Å)	Ideal(Å)
3	A	328	CI2	C6-C5	-6.47	1.35	1.54
3	B	328	CI2	C6-C5	-6.45	1.35	1.54
5	A	330	EDO	O2-C2	-3.91	1.20	1.42
5	B	330	EDO	O2-C2	-3.77	1.21	1.42
5	B	331	EDO	O2-C2	-3.74	1.21	1.42
5	A	331	EDO	O2-C2	-3.73	1.21	1.42
5	A	332	EDO	O2-C2	-3.67	1.22	1.42
3	A	328	CI2	C21-C20	2.09	1.58	1.53
2	A	327	NAP	O4B-C1B	2.09	1.43	1.41
3	B	328	CI2	C17-C19	2.10	1.60	1.56
2	B	327	NAP	C5N-C4N	2.12	1.43	1.38
3	A	328	CI2	C18-C17	2.12	1.58	1.54
2	B	327	NAP	O4B-C1B	2.16	1.43	1.41
3	B	328	CI2	C20-C19	2.19	1.57	1.53

Continued on next page...

Continued from previous page...

Mol	Chain	Res	Type	Atoms	Z	Observed(Å)	Ideal(Å)
3	A	328	CI2	C20-C19	2.22	1.57	1.53
3	B	328	CI2	C18-C17	2.24	1.58	1.54
3	B	328	CI2	C23-C22	2.26	1.58	1.54
3	A	328	CI2	C4-C2	2.27	1.55	1.51
3	B	328	CI2	C5-C4	2.32	1.60	1.54
2	A	327	NAP	C2A-N1A	2.32	1.38	1.33
2	B	327	NAP	C2A-N1A	2.33	1.38	1.33
2	A	327	NAP	C2N-C3N	2.38	1.42	1.39
3	A	328	CI2	C23-C22	2.39	1.58	1.54
3	A	328	CI2	C5-C4	2.47	1.60	1.54
3	A	328	CI2	C12-C13	2.49	1.55	1.50
3	B	328	CI2	C16-C17	2.53	1.59	1.54
3	A	328	CI2	C16-C17	2.58	1.59	1.54
3	B	328	CI2	C8-C19	2.72	1.59	1.53
3	A	328	CI2	C8-C19	2.73	1.59	1.53
3	B	328	CI2	C12-C13	2.83	1.55	1.50
2	B	327	NAP	C4A-N3A	3.11	1.40	1.35
2	B	327	NAP	C2A-N3A	3.22	1.37	1.32
2	A	327	NAP	C2A-N3A	3.26	1.38	1.32
2	A	327	NAP	C4A-N3A	3.46	1.40	1.35
2	A	327	NAP	C6N-N1N	3.47	1.44	1.35
2	B	327	NAP	C6N-N1N	3.53	1.44	1.35
2	A	327	NAP	C4N-C3N	3.62	1.45	1.39
2	B	327	NAP	C4N-C3N	3.87	1.45	1.39
3	B	328	CI2	O3-C2	6.95	1.43	1.21
3	A	328	CI2	O3-C2	6.96	1.43	1.21

All (24) bond angle outliers are listed below:

Mol	Chain	Res	Type	Atoms	Z	Observed(°)	Ideal(°)
2	A	327	NAP	N3A-C2A-N1A	-4.50	125.45	128.89
3	A	328	CI2	O3-C2-C1	-4.28	112.64	121.01
2	B	327	NAP	N3A-C2A-N1A	-4.11	125.75	128.89
3	B	328	CI2	O3-C2-C1	-4.09	113.02	121.01
3	A	328	CI2	C12-C11-C17	-3.05	109.92	112.89
3	B	328	CI2	C12-C11-C17	-2.95	110.02	112.89
3	A	328	CI2	C11-C12-C13	-2.83	107.64	112.64
3	B	328	CI2	C17-C19-C8	-2.74	109.34	112.40
3	A	328	CI2	C17-C19-C8	-2.60	109.50	112.40
3	B	328	CI2	C20-C21-C22	-2.57	108.24	112.84
3	A	328	CI2	C20-C21-C22	-2.51	108.35	112.84
3	B	328	CI2	C21-C20-C19	-2.43	109.01	113.10

Continued on next page...

Continued from previous page...

Mol	Chain	Res	Type	Atoms	Z	Observed(°)	Ideal(°)
3	A	328	CI2	C21-C20-C19	-2.42	109.02	113.10
3	A	328	CI2	C18-C17-C19	-2.16	107.94	111.18
3	B	328	CI2	C11-C12-C13	-2.13	108.88	112.64
3	B	328	CI2	C6-C7-C22	-2.01	101.20	103.82
2	A	327	NAP	PN-O3-PA	2.03	138.44	132.73
2	B	327	NAP	PN-O3-PA	2.06	138.51	132.73
3	B	328	CI2	C5-C6-C7	2.23	109.62	105.12
3	A	328	CI2	C5-C6-C7	2.24	109.63	105.12
3	B	328	CI2	C21-C22-C4	3.54	119.78	116.20
3	A	328	CI2	C21-C22-C4	3.74	119.98	116.20
3	B	328	CI2	C1-C2-C4	3.85	122.91	117.53
3	A	328	CI2	C1-C2-C4	3.87	122.94	117.53

There are no chirality outliers.

There are no torsion outliers.

There are no ring outliers.

8 monomers are involved in 10 short contacts:

Mol	Chain	Res	Type	Clashes	Symm-Clashes
2	A	327	NAP	1	0
3	A	328	CI2	1	0
4	A	329	BME	1	0
5	A	330	EDO	2	0
5	A	331	EDO	1	0
2	B	327	NAP	2	0
3	B	328	CI2	1	0
4	B	329	BME	1	0

5.7 Other polymers [i](#)

There are no such residues in this entry.

5.8 Polymer linkage issues [i](#)

There are no chain breaks in this entry.

6 Fit of model and data

6.1 Protein, DNA and RNA chains

In the following table, the column labelled ‘#RSRZ> 2’ contains the number (and percentage) of RSRZ outliers, followed by percent RSRZ outliers for the chain as percentile scores relative to all X-ray entries and entries of similar resolution. The OWAB column contains the minimum, median, 95th percentile and maximum values of the occupancy-weighted average B-factor per residue. The column labelled ‘Q< 0.9’ lists the number of (and percentage) of residues with an average occupancy less than 0.9.

Mol	Chain	Analysed	<RSRZ>	#RSRZ>2	OWAB(Å ²)	Q<0.9
1	A	325/326 (99%)	0.10	5 (1%) 76 79	4, 10, 21, 34	5 (1%)
1	B	325/326 (99%)	0.38	16 (4%) 33 36	4, 12, 23, 37	11 (3%)
All	All	650/652 (99%)	0.24	21 (3%) 51 54	4, 11, 23, 37	16 (2%)

All (21) RSRZ outliers are listed below:

Mol	Chain	Res	Type	RSRZ
1	B	129	ASP	5.7
1	B	133	PRO	4.6
1	B	2	ASP	4.2
1	A	2	ASP	4.1
1	B	141	LEU	4.1
1	B	140	TRP	3.8
1	B	136	GLU	3.7
1	B	316	ASP	3.2
1	B	30	LYS	3.2
1	B	128	GLY	3.1
1	B	132	TYR	3.1
1	A	30	LYS	2.8
1	B	138	GLY	2.7
1	A	132	TYR	2.6
1	B	137	ASN	2.4
1	A	315	ARG	2.1
1	B	130	GLU	2.1
1	A	131	ILE	2.0
1	B	229	ILE	2.0
1	B	29	PRO	2.0
1	B	315	ARG	2.0

6.2 Non-standard residues in protein, DNA, RNA chains [i](#)

There are no non-standard protein/DNA/RNA residues in this entry.

6.3 Carbohydrates [i](#)

There are no carbohydrates in this entry.

6.4 Ligands [i](#)

In the following table, the Atoms column lists the number of modelled atoms in the group and the number defined in the chemical component dictionary. LLDF column lists the quality of electron density of the group with respect to its neighbouring residues in protein, DNA or RNA chains. The B-factors column lists the minimum, median, 95th percentile and maximum values of B factors of atoms in the group. The column labelled 'Q< 0.9' lists the number of atoms with occupancy less than 0.9.

Mol	Type	Chain	Res	Atoms	RSCC	RSR	LLDF	B-factors(Å ²)	Q<0.9
4	BME	A	329	4/4	0.82	0.25	5.13	41,41,42,43	0
5	EDO	B	331	4/4	0.91	0.27	4.19	21,24,24,25	0
3	CI2	A	328	23/23	0.75	0.24	3.89	23,24,25,29	23
5	EDO	A	330	4/4	0.94	0.18	3.11	10,17,17,17	0
5	EDO	B	330	4/4	0.89	0.13	2.17	28,32,32,34	0
5	EDO	A	331	4/4	0.89	0.16	2.00	14,20,23,23	0
3	CI2	B	328	23/23	0.77	0.19	0.76	18,22,25,27	23
2	NAP	B	327	48/48	0.97	0.08	-1.28	4,9,11,12	0
2	NAP	A	327	48/48	0.97	0.08	-1.51	2,5,9,10	0
5	EDO	A	332	4/4	0.91	0.12	-	24,24,25,27	0
4	BME	B	329	4/4	0.52	0.41	-	70,71,71,71	0

6.5 Other polymers [i](#)

There are no such residues in this entry.