



wwPDB X-ray Structure Validation Summary Report ⓘ

Feb 1, 2016 – 03:28 PM GMT

PDB ID : 4CC9
Title : Crystal structure of human SAMHD1 (amino acid residues 582-626) bound to Vpx isolated from sooty mangabey and human DCAF1 (amino acid residues 1058-1396)
Authors : Schwefel, D.; Groom, H.C.T.; Boucherit, V.C.; Christodoulou, E.; Walker, P.A.; Stoye, J.P.; Bishop, K.N.; Taylor, I.A.
Deposited on : 2013-10-19
Resolution : 2.47 Å(reported)

This is a wwPDB X-ray Structure Validation Summary Report for a publicly released PDB entry.
We welcome your comments at validation@mail.wwpdb.org
A user guide is available at
<http://wwpdb.org/validation/2016/XrayValidationReportHelp>
with specific help available everywhere you see the ⓘ symbol.

The following versions of software and data (see [references ⓘ](#)) were used in the production of this report:

MolProbity : 4.02b-467
Mogul : 1.7 (RC4), CSD as536be (2015)
Xtriage (Phenix) : 1.9-1692
EDS : rb-20026688
Percentile statistics : 20151230.v01 (using entries in the PDB archive December 30th 2015)
Refmac : 5.8.0135
CCP4 : 6.5.0
Ideal geometry (proteins) : Engh & Huber (2001)
Ideal geometry (DNA, RNA) : Parkinson et al. (1996)
Validation Pipeline (wwPDB-VP) : trunk26865

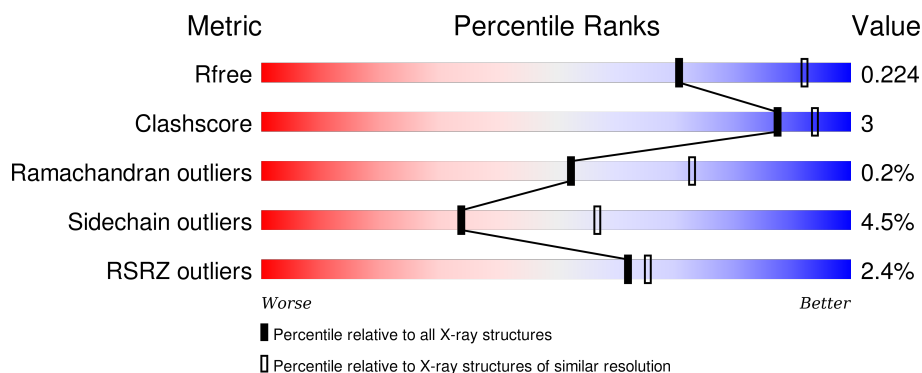
1 Overall quality at a glance

The following experimental techniques were used to determine the structure:

X-RAY DIFFRACTION

The reported resolution of this entry is 2.47 Å.

Percentile scores (ranging between 0-100) for global validation metrics of the entry are shown in the following graphic. The table shows the number of entries on which the scores are based.



Metric	Whole archive (#Entries)	Similar resolution (#Entries, resolution range(Å))
R_{free}	91344	4309 (2.50-2.46)
Clashscore	102246	5050 (2.50-2.46)
Ramachandran outliers	100387	4961 (2.50-2.46)
Sidechain outliers	100360	4963 (2.50-2.46)
RSRZ outliers	91569	4319 (2.50-2.46)

The table below summarises the geometric issues observed across the polymeric chains and their fit to the electron density. The red, orange, yellow and green segments on the lower bar indicate the fraction of residues that contain outliers for ≥ 3 , 2, 1 and 0 types of geometric quality criteria. A grey segment represents the fraction of residues that are not modelled. The numeric value for each fraction is indicated below the corresponding segment, with a dot representing fractions $\leq 5\%$. The upper red bar (where present) indicates the fraction of residues that have poor fit to the electron density. The numeric value is given above the bar.

Mol	Chain	Length	Quality of chain
1	A	361	<div> <div></div> <div>77% 7% • 15%</div> </div>
2	B	119	<div> <div>5%</div> <div>74% 8% • 18%</div> </div>
3	C	71	<div> <div></div> <div>21% 6% 73%</div> </div>

The following table lists non-polymeric compounds, carbohydrate monomers and non-standard residues in protein, DNA, RNA chains that are outliers for geometric or electron-density-fit criteria:

Mol	Type	Chain	Res	Chirality	Geometry	Clashes	Electron density
4	PG4	A	2394	-	-	-	X

2 Entry composition

There are 6 unique types of molecules in this entry. The entry contains 3459 atoms, of which 0 are hydrogens and 0 are deuteriums.

In the tables below, the ZeroOcc column contains the number of atoms modelled with zero occupancy, the AltConf column contains the number of residues with at least one atom in alternate conformation and the Trace column contains the number of residues modelled with at most 2 atoms.

- Molecule 1 is a protein called PROTEIN VPRBP.

Mol	Chain	Residues	Atoms					ZeroOcc	AltConf	Trace
			Total	C	N	O	S			
1	A	307	2448	1547	424	460	17	54	0	0

There are 22 discrepancies between the modelled and reference sequences:

Chain	Residue	Modelled	Actual	Comment	Reference
A	1057	MET	-	EXPRESSION TAG	UNP Q9Y4B6
A	1397	GLU	-	EXPRESSION TAG	UNP Q9Y4B6
A	1398	LEU	-	EXPRESSION TAG	UNP Q9Y4B6
A	1399	ALA	-	EXPRESSION TAG	UNP Q9Y4B6
A	1400	LEU	-	EXPRESSION TAG	UNP Q9Y4B6
A	1401	VAL	-	EXPRESSION TAG	UNP Q9Y4B6
A	1402	PRO	-	EXPRESSION TAG	UNP Q9Y4B6
A	1403	ARG	-	EXPRESSION TAG	UNP Q9Y4B6
A	1404	GLY	-	EXPRESSION TAG	UNP Q9Y4B6
A	1405	SER	-	EXPRESSION TAG	UNP Q9Y4B6
A	1406	SER	-	EXPRESSION TAG	UNP Q9Y4B6
A	1407	ALA	-	EXPRESSION TAG	UNP Q9Y4B6
A	1408	HIS	-	EXPRESSION TAG	UNP Q9Y4B6
A	1409	HIS	-	EXPRESSION TAG	UNP Q9Y4B6
A	1410	HIS	-	EXPRESSION TAG	UNP Q9Y4B6
A	1411	HIS	-	EXPRESSION TAG	UNP Q9Y4B6
A	1412	HIS	-	EXPRESSION TAG	UNP Q9Y4B6
A	1413	HIS	-	EXPRESSION TAG	UNP Q9Y4B6
A	1414	HIS	-	EXPRESSION TAG	UNP Q9Y4B6
A	1415	HIS	-	EXPRESSION TAG	UNP Q9Y4B6
A	1416	HIS	-	EXPRESSION TAG	UNP Q9Y4B6
A	1417	HIS	-	EXPRESSION TAG	UNP Q9Y4B6

- Molecule 2 is a protein called PROTEIN VPX.

Mol	Chain	Residues	Atoms					ZeroOcc	AltConf	Trace
2	B	98	Total	C	N	O	S	20	0	0
			801	511	144	138	8			

There are 7 discrepancies between the modelled and reference sequences:

Chain	Residue	Modelled	Actual	Comment	Reference
B	-6	GLY	-	EXPRESSION TAG	UNP P19508
B	-5	PRO	-	EXPRESSION TAG	UNP P19508
B	-4	GLY	-	EXPRESSION TAG	UNP P19508
B	-3	TYR	-	EXPRESSION TAG	UNP P19508
B	-2	GLN	-	EXPRESSION TAG	UNP P19508
B	-1	ASP	-	EXPRESSION TAG	UNP P19508
B	0	PRO	-	EXPRESSION TAG	UNP P19508

- Molecule 3 is a protein called DEOXYNUCLEOSIDE TRIPHOSPHATE TRIPHOSPHO-HYDROLASE SAMHD1.

Mol	Chain	Residues	Atoms				ZeroOcc	AltConf	Trace
3	C	19	Total	C	N	O	4	0	0
			158	96	32	30			

There are 26 discrepancies between the modelled and reference sequences:

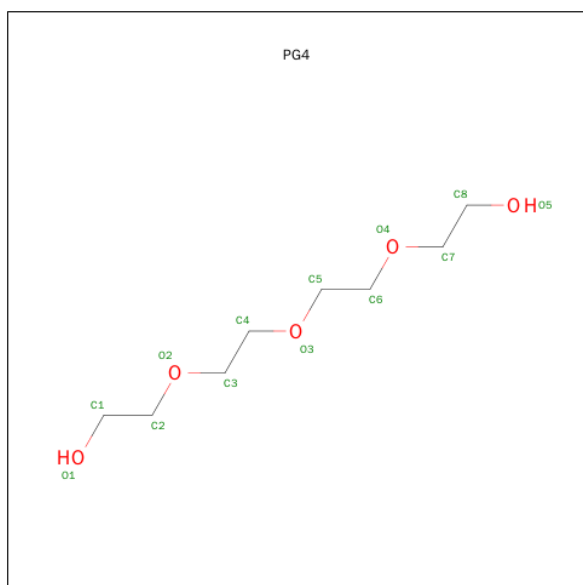
Chain	Residue	Modelled	Actual	Comment	Reference
C	556	MET	-	EXPRESSION TAG	UNP Q9Y3Z3
C	557	ALA	-	EXPRESSION TAG	UNP Q9Y3Z3
C	558	SER	-	EXPRESSION TAG	UNP Q9Y3Z3
C	559	TRP	-	EXPRESSION TAG	UNP Q9Y3Z3
C	560	SER	-	EXPRESSION TAG	UNP Q9Y3Z3
C	561	HIS	-	EXPRESSION TAG	UNP Q9Y3Z3
C	562	PRO	-	EXPRESSION TAG	UNP Q9Y3Z3
C	563	GLN	-	EXPRESSION TAG	UNP Q9Y3Z3
C	564	PHE	-	EXPRESSION TAG	UNP Q9Y3Z3
C	565	GLU	-	EXPRESSION TAG	UNP Q9Y3Z3
C	566	LYS	-	EXPRESSION TAG	UNP Q9Y3Z3
C	567	GLY	-	EXPRESSION TAG	UNP Q9Y3Z3
C	568	ALA	-	EXPRESSION TAG	UNP Q9Y3Z3
C	569	LEU	-	EXPRESSION TAG	UNP Q9Y3Z3
C	570	GLU	-	EXPRESSION TAG	UNP Q9Y3Z3
C	571	VAL	-	EXPRESSION TAG	UNP Q9Y3Z3
C	572	LEU	-	EXPRESSION TAG	UNP Q9Y3Z3
C	573	PHE	-	EXPRESSION TAG	UNP Q9Y3Z3
C	574	GLN	-	EXPRESSION TAG	UNP Q9Y3Z3

Continued on next page...

Continued from previous page...

Chain	Residue	Modelled	Actual	Comment	Reference
C	575	GLY	-	EXPRESSION TAG	UNP Q9Y3Z3
C	576	PRO	-	EXPRESSION TAG	UNP Q9Y3Z3
C	577	GLY	-	EXPRESSION TAG	UNP Q9Y3Z3
C	578	TYR	-	EXPRESSION TAG	UNP Q9Y3Z3
C	579	GLN	-	EXPRESSION TAG	UNP Q9Y3Z3
C	580	ASP	-	EXPRESSION TAG	UNP Q9Y3Z3
C	581	PRO	-	EXPRESSION TAG	UNP Q9Y3Z3

- Molecule 4 is TETRAETHYLENE GLYCOL (three-letter code: PG4) (formula: $C_8H_{18}O_5$).



Mol	Chain	Residues	Atoms			ZeroOcc	AltConf
4	A	1	Total	C	O	0	0
			13	8	5		
4	A	1	Total	C	O	0	0
			13	8	5		

- Molecule 5 is ZINC ION (three-letter code: ZN) (formula: Zn).

Mol	Chain	Residues	Atoms		ZeroOcc	AltConf
5	B	1	Total	Zn	0	0
			1	1		

- Molecule 6 is water.

Mol	Chain	Residues	Atoms		ZeroOcc	AltConf
6	A	21	Total 21	O 21	0	0
6	B	3	Total 3	O 3	0	0
6	C	1	Total 1	O 1	0	0

4 Data and refinement statistics

Property	Value	Source
Space group	P 21 21 21	Depositor
Cell constants a, b, c, α , β , γ	74.25Å 82.88Å 115.56Å 90.00° 90.00° 90.00°	Depositor
Resolution (Å)	29.23 – 2.47 29.23 – 2.47	Depositor EDS
% Data completeness (in resolution range)	97.8 (29.23-2.47) 97.8 (29.23-2.47)	Depositor EDS
R_{merge}	0.09	Depositor
R_{sym}	(Not available)	Depositor
$\langle I/\sigma(I) \rangle$ ¹	2.91 (at 2.48Å)	Xtriage
Refinement program	PHENIX (PHENIX.REFINE)	Depositor
R, R_{free}	0.176 , 0.216 0.189 , 0.224	Depositor DCC
R_{free} test set	1303 reflections (5.38%)	DCC
Wilson B-factor (Å ²)	39.8	Xtriage
Anisotropy	0.208	Xtriage
Bulk solvent k_{sol} (e/Å ³), B_{sol} (Å ²)	0.38 , 62.1	EDS
Estimated twinning fraction	No twinning to report.	Xtriage
L-test for twinning ²	$\langle L \rangle = 0.47$, $\langle L^2 \rangle = 0.30$	Xtriage
Outliers	0 of 25520 reflections	Xtriage
F_o, F_c correlation	0.94	EDS
Total number of atoms	3459	wwPDB-VP
Average B, all atoms (Å ²)	32.0	wwPDB-VP

Xtriage's analysis on translational NCS is as follows: *The largest off-origin peak in the Patterson function is 5.21% of the height of the origin peak. No significant pseudotranslation is detected.*

¹Intensities estimated from amplitudes.

²Theoretical values of $\langle |L| \rangle$, $\langle L^2 \rangle$ for acentric reflections are 0.5, 0.375 respectively for untwinned datasets, and 0.333, 0.2 for perfectly twinned datasets.

5 Model quality [i](#)

5.1 Standard geometry [i](#)

Bond lengths and bond angles in the following residue types are not validated in this section: ZN, PG4

The Z score for a bond length (or angle) is the number of standard deviations the observed value is removed from the expected value. A bond length (or angle) with $|Z| > 5$ is considered an outlier worth inspection. RMSZ is the root-mean-square of all Z scores of the bond lengths (or angles).

Mol	Chain	Bond lengths		Bond angles	
		RMSZ	$\# Z > 5$	RMSZ	$\# Z > 5$
1	A	0.42	0/2505	0.60	1/3394 (0.0%)
2	B	0.42	0/828	0.52	0/1123
3	C	0.39	0/159	0.59	0/211
All	All	0.42	0/3492	0.58	1/4728 (0.0%)

There are no bond length outliers.

All (1) bond angle outliers are listed below:

Mol	Chain	Res	Type	Atoms	Z	Observed(°)	Ideal(°)
1	A	1369	ILE	CG1-CB-CG2	-5.28	99.79	111.40

There are no chirality outliers.

There are no planarity outliers.

5.2 Too-close contacts [i](#)

In the following table, the Non-H and H(model) columns list the number of non-hydrogen atoms and hydrogen atoms in the chain respectively. The H(added) column lists the number of hydrogen atoms added and optimized by MolProbity. The Clashes column lists the number of clashes within the asymmetric unit, whereas Symm-Clashes lists symmetry related clashes.

Mol	Chain	Non-H	H(model)	H(added)	Clashes	Symm-Clashes
1	A	2448	0	2354	11	0
2	B	801	0	765	6	0
3	C	158	0	161	1	0
4	A	26	0	36	0	0
5	B	1	0	0	0	0
6	A	21	0	0	0	0
6	B	3	0	0	0	0

Continued on next page...

Continued from previous page...

Mol	Chain	Non-H	H(model)	H(added)	Clashes	Symm-Clashes
6	C	1	0	0	0	0
All	All	3459	0	3316	17	0

The all-atom clashscore is defined as the number of clashes found per 1000 atoms (including hydrogen atoms). The all-atom clashscore for this structure is 3.

The worst 5 of 17 close contacts within the same asymmetric unit are listed below, sorted by their clash magnitude.

Atom-1	Atom-2	Interatomic distance (Å)	Clash overlap (Å)
1:A:1329:PRO:HG3	2:B:85:LYS:HD3	1.69	0.73
2:B:16:GLU:HG3	2:B:20:GLU:HG3	1.73	0.68
1:A:1245:ASP:HB2	1:A:1252:ILE:HD11	1.83	0.60
1:A:1158:GLN:NE2	1:A:1177:THR:OG1	2.35	0.59
2:B:26:ASP:OD1	2:B:68:LYS:NZ	2.38	0.57

There are no symmetry-related clashes.

5.3 Torsion angles [i](#)

5.3.1 Protein backbone [i](#)

In the following table, the Percentiles column shows the percent Ramachandran outliers of the chain as a percentile score with respect to all X-ray entries followed by that with respect to entries of similar resolution.

The Analysed column shows the number of residues for which the backbone conformation was analysed, and the total number of residues.

Mol	Chain	Analysed	Favoured	Allowed	Outliers	Percentiles	
1	A	303/361 (84%)	294 (97%)	8 (3%)	1 (0%)	46	66
2	B	94/119 (79%)	91 (97%)	3 (3%)	0	100	100
3	C	17/71 (24%)	17 (100%)	0	0	100	100
All	All	414/551 (75%)	402 (97%)	11 (3%)	1 (0%)	52	73

All (1) Ramachandran outliers are listed below:

Mol	Chain	Res	Type
1	A	1167	LYS

5.3.2 Protein sidechains [i](#)

In the following table, the Percentiles column shows the percent sidechain outliers of the chain as a percentile score with respect to all X-ray entries followed by that with respect to entries of similar resolution.

The Analysed column shows the number of residues for which the sidechain conformation was analysed, and the total number of residues.

Mol	Chain	Analysed	Rotameric	Outliers	Percentiles	
1	A	271/316 (86%)	259 (96%)	12 (4%)	35	58
2	B	85/99 (86%)	82 (96%)	3 (4%)	43	69
3	C	18/63 (29%)	16 (89%)	2 (11%)	8	13
All	All	374/478 (78%)	357 (96%)	17 (4%)	34	57

5 of 17 residues with a non-rotameric sidechain are listed below:

Mol	Chain	Res	Type
1	A	1256	ASP
1	A	1259	ASN
2	B	64	VAL
1	A	1243	LEU
2	B	100	ARG

Some sidechains can be flipped to improve hydrogen bonding and reduce clashes. There are no such sidechains identified.

5.3.3 RNA [i](#)

There are no RNA molecules in this entry.

5.4 Non-standard residues in protein, DNA, RNA chains [i](#)

There are no non-standard protein/DNA/RNA residues in this entry.

5.5 Carbohydrates [i](#)

There are no carbohydrates in this entry.

5.6 Ligand geometry [i](#)

Of 3 ligands modelled in this entry, 1 is monoatomic - leaving 2 for Mogul analysis.

In the following table, the Counts columns list the number of bonds (or angles) for which Mogul statistics could be retrieved, the number of bonds (or angles) that are observed in the model and the number of bonds (or angles) that are defined in the chemical component dictionary. The Link column lists molecule types, if any, to which the group is linked. The Z score for a bond length (or angle) is the number of standard deviations the observed value is removed from the expected value. A bond length (or angle) with $|Z| > 2$ is considered an outlier worth inspection. RMSZ is the root-mean-square of all Z scores of the bond lengths (or angles).

Mol	Type	Chain	Res	Link	Bond lengths			Bond angles		
					Counts	RMSZ	$\# Z > 2$	Counts	RMSZ	$\# Z > 2$
4	PG4	A	2393	-	12,12,12	0.54	0	11,11,11	0.34	0
4	PG4	A	2394	-	12,12,12	0.57	0	11,11,11	0.44	0

In the following table, the Chirals column lists the number of chiral outliers, the number of chiral centers analysed, the number of these observed in the model and the number defined in the chemical component dictionary. Similar counts are reported in the Torsion and Rings columns. '-' means no outliers of that kind were identified.

Mol	Type	Chain	Res	Link	Chirals	Torsions	Rings
4	PG4	A	2393	-	-	0/10/10/10	0/0/0/0
4	PG4	A	2394	-	-	0/10/10/10	0/0/0/0

There are no bond length outliers.

There are no bond angle outliers.

There are no chirality outliers.

There are no torsion outliers.

There are no ring outliers.

No monomer is involved in short contacts.

5.7 Other polymers [i](#)

There are no such residues in this entry.

5.8 Polymer linkage issues [i](#)

There are no chain breaks in this entry.

6 Fit of model and data [i](#)

6.1 Protein, DNA and RNA chains [i](#)

In the following table, the column labelled ‘#RSRZ> 2’ contains the number (and percentage) of RSRZ outliers, followed by percent RSRZ outliers for the chain as percentile scores relative to all X-ray entries and entries of similar resolution. The OWAB column contains the minimum, median, 95th percentile and maximum values of the occupancy-weighted average B-factor per residue. The column labelled ‘Q< 0.9’ lists the number of (and percentage) of residues with an average occupancy less than 0.9.

Mol	Chain	Analysed	<RSRZ>	#RSRZ>2	OWAB(Å ²)	Q<0.9
1	A	307/361 (85%)	-0.45	3 (0%) 84 86	13, 30, 54, 62	13 (4%)
2	B	98/119 (82%)	-0.28	6 (6%) 25 27	14, 27, 68, 84	5 (5%)
3	C	19/71 (26%)	0.17	1 (5%) 30 34	25, 40, 65, 80	1 (5%)
All	All	424/551 (76%)	-0.39	10 (2%) 62 65	13, 30, 55, 84	19 (4%)

The worst 5 of 10 RSRZ outliers are listed below:

Mol	Chain	Res	Type	RSRZ
2	B	89	CYS	4.3
1	A	1314	GLN	3.1
2	B	88	ARG	3.0
2	B	90	LEU	2.5
2	B	101	PRO	2.4

6.2 Non-standard residues in protein, DNA, RNA chains [i](#)

There are no non-standard protein/DNA/RNA residues in this entry.

6.3 Carbohydrates [i](#)

There are no carbohydrates in this entry.

6.4 Ligands [i](#)

In the following table, the Atoms column lists the number of modelled atoms in the group and the number defined in the chemical component dictionary. LLDF column lists the quality of electron density of the group with respect to its neighbouring residues in protein, DNA or RNA chains. The B-factors column lists the minimum, median, 95th percentile and maximum values of B factors

of atoms in the group. The column labelled 'Q< 0.9' lists the number of atoms with occupancy less than 0.9.

Mol	Type	Chain	Res	Atoms	RSCC	RSR	LLDF	B-factors(\AA^2)	Q<0.9
4	PG4	A	2394	13/13	0.69	0.30	3.24	49,68,71,75	0
4	PG4	A	2393	13/13	0.86	0.17	1.44	47,54,66,68	0
5	ZN	B	1112	1/1	0.99	0.03	-1.95	43,43,43,43	0

6.5 Other polymers [i](#)

There are no such residues in this entry.