



Full wwPDB X-ray Structure Validation Report ⓘ

Feb 1, 2016 – 03:30 PM GMT

PDB ID : 4CDD
Title : Human DPP1 in complex with (2S)-N-((1S)-1-cyano-2-(4-(4-cyanophenyl) phenyl)ethyl)piperidine-2-carboxamide
Authors : Debreczeni, J.; Edman, K.; Furber, M.; Tiden, A.; Gardiner, P.; Mete, T.; Ford, R.; Millichip, I.; Stein, L.; Mather, A.; Kinchin, E.; Luckhurst, C.; Cage, P.; Sanghanee, H.; Breed, J.; Wissler, L.
Deposited on : 2013-10-31
Resolution : 2.35 Å(reported)

This is a Full wwPDB X-ray Structure Validation Report for a publicly released PDB entry.
We welcome your comments at validation@mail.wwpdb.org
A user guide is available at
<http://wwpdb.org/validation/2016/XrayValidationReportHelp>
with specific help available everywhere you see the ⓘ symbol.

The following versions of software and data (see [references ⓘ](#)) were used in the production of this report:

MolProbity : 4.02b-467
Mogul : 1.7 (RC4), CSD as536be (2015)
Xtriage (Phenix) : 1.9-1692
EDS : rb-20026688
Percentile statistics : 20151230.v01 (using entries in the PDB archive December 30th 2015)
Refmac : 5.8.0135
CCP4 : 6.5.0
Ideal geometry (proteins) : Engh & Huber (2001)
Ideal geometry (DNA, RNA) : Parkinson et al. (1996)
Validation Pipeline (wwPDB-VP) : trunk26865

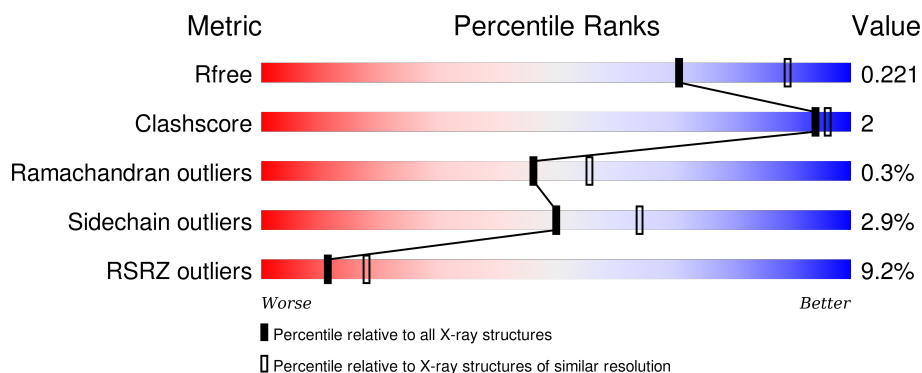
1 Overall quality at a glance ⓘ

The following experimental techniques were used to determine the structure:

X-RAY DIFFRACTION

The reported resolution of this entry is 2.35 Å.

Percentile scores (ranging between 0-100) for global validation metrics of the entry are shown in the following graphic. The table shows the number of entries on which the scores are based.



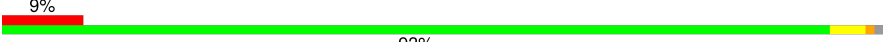
Metric	Whole archive (#Entries)	Similar resolution (#Entries, resolution range(Å))
R_{free}	91344	1352 (2.38-2.34)
Clashscore	102246	1456 (2.38-2.34)
Ramachandran outliers	100387	1435 (2.38-2.34)
Sidechain outliers	100360	1436 (2.38-2.34)
RSRZ outliers	91569	1358 (2.38-2.34)

The table below summarises the geometric issues observed across the polymeric chains and their fit to the electron density. The red, orange, yellow and green segments on the lower bar indicate the fraction of residues that contain outliers for ≥ 3 , 2, 1 and 0 types of geometric quality criteria. A grey segment represents the fraction of residues that are not modelled. The numeric value for each fraction is indicated below the corresponding segment, with a dot representing fractions $\leq 5\%$. The upper red bar (where present) indicates the fraction of residues that have poor fit to the electron density. The numeric value is given above the bar.

Mol	Chain	Length	Quality of chain
1	A	120	<div> <div>8%</div> <div>93%</div> <div>5% ..</div> </div>
1	D	120	<div> <div>18%</div> <div>90%</div> <div>6% .</div> </div>
2	B	165	<div> <div>4%</div> <div>93%</div> <div>..</div> </div>
2	E	165	<div> <div>10%</div> <div>89%</div> <div>8% .</div> </div>
3	C	69	<div> <div>4%</div> <div>96%</div> <div>..</div> </div>

Continued on next page...

Continued from previous page...

Mol	Chain	Length	Quality of chain
3	F	69	

The following table lists non-polymeric compounds, carbohydrate monomers and non-standard residues in protein, DNA, RNA chains that are outliers for geometric or electron-density-fit criteria:

Mol	Type	Chain	Res	Chirality	Geometry	Clashes	Electron density
5	NAG	A	1120	-	-	-	X

2 Entry composition

There are 8 unique types of molecules in this entry. The entry contains 5700 atoms, of which 0 are hydrogens and 0 are deuteriums.

In the tables below, the ZeroOcc column contains the number of atoms modelled with zero occupancy, the AltConf column contains the number of residues with at least one atom in alternate conformation and the Trace column contains the number of residues modelled with at most 2 atoms.

- Molecule 1 is a protein called DIPEPTIDYL PEPTIDASE 1 EXCLUSION DOMAIN CHAIN.

Mol	Chain	Residues	Atoms					ZeroOcc	AltConf	Trace
1	A	118	Total	C	N	O	S	0	0	0
			946	608	153	179	6			
1	D	115	Total	C	N	O	S	0	0	0
			920	593	149	172	6			

- Molecule 2 is a protein called DIPEPTIDYL PEPTIDASE 1 HEAVY CHAIN.

Mol	Chain	Residues	Atoms					ZeroOcc	AltConf	Trace
2	B	162	Total	C	N	O	S	0	0	0
			1284	820	213	238	13			
2	E	161	Total	C	N	O	S	0	0	0
			1274	814	210	237	13			

- Molecule 3 is a protein called DIPEPTIDYL PEPTIDASE 1 LIGHT CHAIN.

Mol	Chain	Residues	Atoms					ZeroOcc	AltConf	Trace
3	C	68	Total	C	N	O	S	0	0	0
			528	339	88	99	2			
3	F	68	Total	C	N	O	S	0	0	0
			528	339	88	99	2			

- Molecule 4 is SUGAR (N-ACETYL-D-GLUCOSAMINE) (three-letter code: NAG) (formula: C₈H₁₅NO₆).

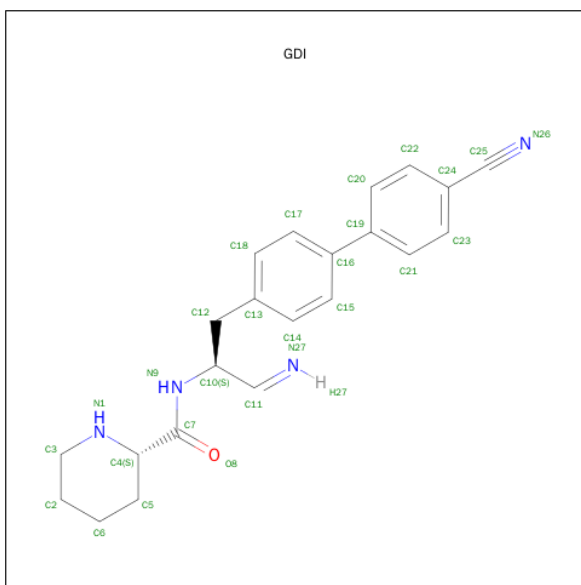


Mol	Chain	Residues	Atoms				ZeroOcc	AltConf
4	A	1	Total	C	N	O	0	0
			14	8	1	5		
4	B	1	Total	C	N	O	0	0
			14	8	1	5		
4	E	1	Total	C	N	O	0	0
			14	8	1	5		

- Molecule 5 is a polymer of unknown type called SUGAR (2-MER).

Mol	Chain	Residues	Atoms				ZeroOcc	AltConf
5	A	2	Total	C	N	O	0	0
			28	16	2	10		

- Molecule 6 is (2S)-N-[(2S)-1-AZANYLIDENE-3-[4-(4-CYANOPHENYL)PHENYL]PROPA N-2-YL]PIPERIDINE-2-CARBOXAMIDE (three-letter code: GDI) (formula: C₂₂H₂₄N₄O).



Mol	Chain	Residues	Atoms				ZeroOcc	AltConf
6	B	1	Total	C	N	O	0	0
			27	22	4	1		
6	E	1	Total	C	N	O	0	0
			27	22	4	1		

- Molecule 7 is CHLORIDE ION (three-letter code: CL) (formula: Cl).

Mol	Chain	Residues	Atoms		ZeroOcc	AltConf
7	B	1	Total	Cl	0	0
			1	1		
7	E	1	Total	Cl	0	0
			1	1		

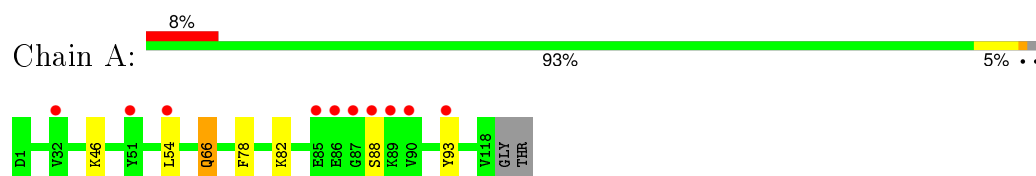
- Molecule 8 is water.

Mol	Chain	Residues	Atoms		ZeroOcc	AltConf
8	A	25	Total	O	0	0
			25	25		
8	B	31	Total	O	0	0
			31	31		
8	C	6	Total	O	0	0
			6	6		
8	D	18	Total	O	0	0
			18	18		
8	E	14	Total	O	0	0
			14	14		

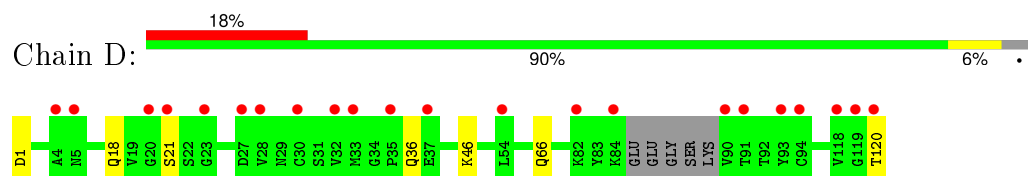
3 Residue-property plots [i](#)

These plots are drawn for all protein, RNA and DNA chains in the entry. The first graphic for a chain summarises the proportions of errors displayed in the second graphic. The second graphic shows the sequence view annotated by issues in geometry and electron density. Residues are color-coded according to the number of geometric quality criteria for which they contain at least one outlier: green = 0, yellow = 1, orange = 2 and red = 3 or more. A red dot above a residue indicates a poor fit to the electron density ($RSRZ > 2$). Stretches of 2 or more consecutive residues without any outlier are shown as a green connector. Residues present in the sample, but not in the model, are shown in grey.

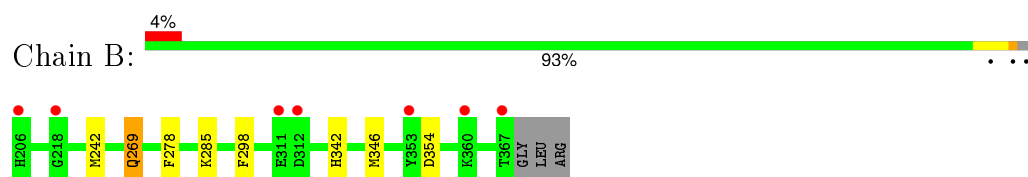
- Molecule 1: DIPEPTIDYL PEPTIDASE 1 EXCLUSION DOMAIN CHAIN



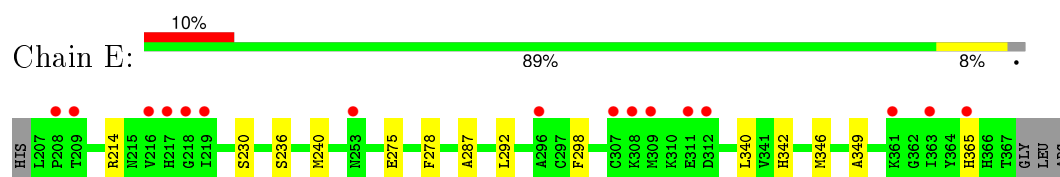
- Molecule 1: DIPEPTIDYL PEPTIDASE 1 EXCLUSION DOMAIN CHAIN



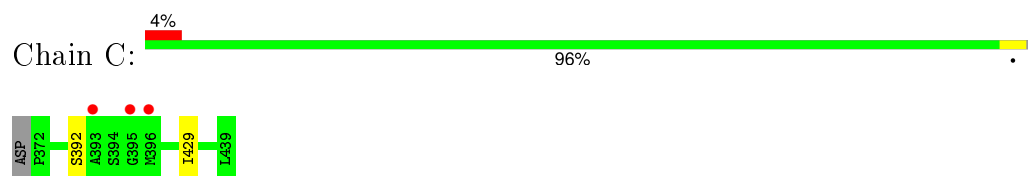
- Molecule 2: DIPEPTIDYL PEPTIDASE 1 HEAVY CHAIN



- Molecule 2: DIPEPTIDYL PEPTIDASE 1 HEAVY CHAIN

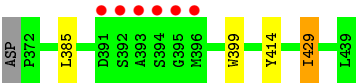


- Molecule 3: DIPEPTIDYL PEPTIDASE 1 LIGHT CHAIN



- Molecule 3: DIPEPTIDYL PEPTIDASE 1 LIGHT CHAIN





4 Data and refinement statistics

Property	Value	Source
Space group	P 31 2 1	Depositor
Cell constants a, b, c, α , β , γ	84.29Å 84.29Å 221.11Å 90.00° 90.00° 120.00°	Depositor
Resolution (Å)	44.07 – 2.35 44.07 – 2.35	Depositor EDS
% Data completeness (in resolution range)	95.6 (44.07-2.35) 95.6 (44.07-2.35)	Depositor EDS
R_{merge}	0.08	Depositor
R_{sym}	(Not available)	Depositor
$\langle I/\sigma(I) \rangle$ ¹	2.44 (at 2.34Å)	Xtriage
Refinement program	REFMAC 5.7.0032	Depositor
R, R_{free}	0.187 , 0.223 0.190 , 0.221	Depositor DCC
R_{free} test set	1863 reflections (5.28%)	DCC
Wilson B-factor (Å ²)	47.0	Xtriage
Anisotropy	0.099	Xtriage
Bulk solvent k_{sol} (e/Å ³), B_{sol} (Å ²)	0.37 , 44.6	EDS
Estimated twinning fraction	0.037 for -h,-k,l	Xtriage
L-test for twinning ²	$\langle L \rangle = 0.47$, $\langle L^2 \rangle = 0.30$	Xtriage
Outliers	0 of 37165 reflections	Xtriage
F_o, F_c correlation	0.95	EDS
Total number of atoms	5700	wwPDB-VP
Average B, all atoms (Å ²)	58.0	wwPDB-VP

Xtriage's analysis on translational NCS is as follows: *The largest off-origin peak in the Patterson function is 3.56% of the height of the origin peak. No significant pseudotranslation is detected.*

¹Intensities estimated from amplitudes.

²Theoretical values of $\langle |L| \rangle$, $\langle L^2 \rangle$ for acentric reflections are 0.5, 0.375 respectively for untwinned datasets, and 0.333, 0.2 for perfectly twinned datasets.

5 Model quality [i](#)

5.1 Standard geometry [i](#)

Bond lengths and bond angles in the following residue types are not validated in this section: GDI, NAG, CL

The Z score for a bond length (or angle) is the number of standard deviations the observed value is removed from the expected value. A bond length (or angle) with $|Z| > 5$ is considered an outlier worth inspection. RMSZ is the root-mean-square of all Z scores of the bond lengths (or angles).

Mol	Chain	Bond lengths		Bond angles	
		RMSZ	$\# Z > 5$	RMSZ	$\# Z > 5$
1	A	0.45	0/971	0.60	0/1317
1	D	0.42	0/944	0.58	0/1281
2	B	0.42	0/1325	0.56	0/1796
2	E	0.39	0/1314	0.54	0/1781
3	C	0.42	0/544	0.61	0/740
3	F	0.40	0/544	0.58	0/740
All	All	0.42	0/5642	0.57	0/7655

There are no bond length outliers.

There are no bond angle outliers.

There are no chirality outliers.

There are no planarity outliers.

5.2 Too-close contacts [i](#)

In the following table, the Non-H and H(model) columns list the number of non-hydrogen atoms and hydrogen atoms in the chain respectively. The H(added) column lists the number of hydrogen atoms added and optimized by MolProbity. The Clashes column lists the number of clashes within the asymmetric unit, whereas Symm-Clashes lists symmetry related clashes.

Mol	Chain	Non-H	H(model)	H(added)	Clashes	Symm-Clashes
1	A	946	0	897	3	0
1	D	920	0	875	4	0
2	B	1284	0	1185	5	0
2	E	1274	0	1178	10	0
3	C	528	0	502	0	0
3	F	528	0	502	4	0
4	A	14	0	13	0	0

Continued on next page...

Continued from previous page...

Mol	Chain	Non-H	H(model)	H(added)	Clashes	Symm-Clashes
4	B	14	0	13	0	0
4	E	14	0	13	0	0
5	A	28	0	25	0	0
6	B	27	0	22	1	0
6	E	27	0	22	1	0
7	B	1	0	0	0	0
7	E	1	0	0	0	0
8	A	25	0	0	0	0
8	B	31	0	0	0	0
8	C	6	0	0	0	0
8	D	18	0	0	0	0
8	E	14	0	0	0	0
All	All	5700	0	5247	19	0

The all-atom clashscore is defined as the number of clashes found per 1000 atoms (including hydrogen atoms). The all-atom clashscore for this structure is 2.

All (19) close contacts within the same asymmetric unit are listed below, sorted by their clash magnitude.

Atom-1	Atom-2	Interatomic distance (Å)	Clash overlap (Å)
2:E:278:PHE:CE2	6:E:1369:GDI:H31C	2.08	0.88
1:D:18:GLN:HG2	1:D:36:GLN:CD	2.09	0.74
1:D:66:GLN:HG3	2:E:278:PHE:CZ	2.35	0.61
1:A:66:GLN:HG3	2:B:278:PHE:CZ	2.37	0.59
1:D:66:GLN:HG3	2:E:278:PHE:CE1	2.41	0.56
2:E:236:SER:O	2:E:240:MET:HG2	2.06	0.56
1:D:18:GLN:HG2	1:D:36:GLN:NE2	2.26	0.49
2:B:242:MET:SD	2:B:346:MET:HA	2.54	0.48
2:E:349:ALA:HB3	3:F:429:ILE:CG2	2.45	0.47
2:E:287:ALA:HB2	2:E:292:LEU:HD11	1.99	0.45
3:F:385:LEU:HD11	3:F:399:TRP:CE3	2.52	0.45
2:E:340:LEU:HB2	2:E:346:MET:HE1	2.00	0.44
2:E:214:ARG:HD3	3:F:414:TYR:CZ	2.53	0.43
2:B:278:PHE:CE1	6:B:1369:GDI:H31C	2.54	0.43
2:E:275:GLU:N	2:E:275:GLU:CD	2.72	0.43
1:A:78:PHE:HB3	2:B:285:LYS:HE2	2.03	0.41
2:E:349:ALA:HB3	3:F:429:ILE:HG21	2.03	0.41
2:B:269:GLN:CD	2:B:269:GLN:H	2.24	0.40
1:A:82:LYS:HB3	1:A:93:TYR:HB2	2.04	0.40

There are no symmetry-related clashes.

5.3 Torsion angles

5.3.1 Protein backbone

In the following table, the Percentiles column shows the percent Ramachandran outliers of the chain as a percentile score with respect to all X-ray entries followed by that with respect to entries of similar resolution.

The Analysed column shows the number of residues for which the backbone conformation was analysed, and the total number of residues.

Mol	Chain	Analysed	Favoured	Allowed	Outliers	Percentiles	
1	A	116/120 (97%)	108 (93%)	8 (7%)	0	100	100
1	D	111/120 (92%)	104 (94%)	7 (6%)	0	100	100
2	B	160/165 (97%)	153 (96%)	7 (4%)	0	100	100
2	E	159/165 (96%)	150 (94%)	9 (6%)	0	100	100
3	C	66/69 (96%)	63 (96%)	2 (3%)	1 (2%)	13	11
3	F	66/69 (96%)	62 (94%)	3 (4%)	1 (2%)	13	11
All	All	678/708 (96%)	640 (94%)	36 (5%)	2 (0%)	46	55

All (2) Ramachandran outliers are listed below:

Mol	Chain	Res	Type
3	C	429	ILE
3	F	429	ILE

5.3.2 Protein sidechains

In the following table, the Percentiles column shows the percent sidechain outliers of the chain as a percentile score with respect to all X-ray entries followed by that with respect to entries of similar resolution.

The Analysed column shows the number of residues for which the sidechain conformation was analysed, and the total number of residues.

Mol	Chain	Analysed	Rotameric	Outliers	Percentiles	
1	A	103/104 (99%)	99 (96%)	4 (4%)	39	51
1	D	100/104 (96%)	96 (96%)	4 (4%)	38	49
2	B	137/139 (99%)	133 (97%)	4 (3%)	50	64
2	E	136/139 (98%)	132 (97%)	4 (3%)	50	64
3	C	54/55 (98%)	53 (98%)	1 (2%)	65	79

Continued on next page...

Continued from previous page...

Mol	Chain	Analysed	Rotameric	Outliers	Percentiles	
3	F	54/55 (98%)	54 (100%)	0	100	100
All	All	584/596 (98%)	567 (97%)	17 (3%)	50	64

All (17) residues with a non-rotameric sidechain are listed below:

Mol	Chain	Res	Type
1	A	46	LYS
1	A	54	LEU
1	A	66	GLN
1	A	88	SER
2	B	269	GLN
2	B	298	PHE
2	B	342	HIS
2	B	354	ASP
3	C	392	SER
1	D	1	ASP
1	D	21	SER
1	D	46	LYS
1	D	120	THR
2	E	230	SER
2	E	298	PHE
2	E	342	HIS
2	E	365	HIS

Some sidechains can be flipped to improve hydrogen bonding and reduce clashes. All (1) such sidechains are listed below:

Mol	Chain	Res	Type
1	D	25	GLN

5.3.3 RNA ⓘ

There are no RNA molecules in this entry.

5.4 Non-standard residues in protein, DNA, RNA chains ⓘ

There are no non-standard protein/DNA/RNA residues in this entry.

5.5 Carbohydrates ⓘ

2 carbohydrates are modelled in this entry.

In the following table, the Counts columns list the number of bonds (or angles) for which Mogul statistics could be retrieved, the number of bonds (or angles) that are observed in the model and the number of bonds (or angles) that are defined in the chemical component dictionary. The Link column lists molecule types, if any, to which the group is linked. The Z score for a bond length (or angle) is the number of standard deviations the observed value is removed from the expected value. A bond length (or angle) with $|Z| > 2$ is considered an outlier worth inspection. RMSZ is the root-mean-square of all Z scores of the bond lengths (or angles).

Mol	Type	Chain	Res	Link	Bond lengths			Bond angles		
					Counts	RMSZ	# Z > 2	Counts	RMSZ	# Z > 2
5	NAG	A	1120	1,5	14,14,15	0.48	0	15,19,21	1.38	3 (20%)
5	NAG	A	1121	5	14,14,15	0.49	0	15,19,21	1.11	1 (6%)

In the following table, the Chirals column lists the number of chiral outliers, the number of chiral centers analysed, the number of these observed in the model and the number defined in the chemical component dictionary. Similar counts are reported in the Torsion and Rings columns. '-' means no outliers of that kind were identified.

Mol	Type	Chain	Res	Link	Chirals	Torsions	Rings
5	NAG	A	1120	1,5	-	0/6/23/26	0/1/1/1
5	NAG	A	1121	5	-	0/6/23/26	0/1/1/1

There are no bond length outliers.

All (4) bond angle outliers are listed below:

Mol	Chain	Res	Type	Atoms	Z	Observed(°)	Ideal(°)
5	A	1120	NAG	O7-C7-C8	-2.28	117.87	122.06
5	A	1121	NAG	C8-C7-N2	2.44	120.78	116.11
5	A	1120	NAG	C2-N2-C7	2.93	126.80	123.04
5	A	1120	NAG	C8-C7-N2	3.20	122.24	116.11

There are no chirality outliers.

There are no torsion outliers.

There are no ring outliers.

No monomer is involved in short contacts.

5.6 Ligand geometry

Of 7 ligands modelled in this entry, 2 are monoatomic - leaving 5 for Mogul analysis.

In the following table, the Counts columns list the number of bonds (or angles) for which Mogul statistics could be retrieved, the number of bonds (or angles) that are observed in the model and the number of bonds (or angles) that are defined in the chemical component dictionary. The Link column lists molecule types, if any, to which the group is linked. The Z score for a bond length (or angle) is the number of standard deviations the observed value is removed from the expected value. A bond length (or angle) with $|Z| > 2$ is considered an outlier worth inspection. RMSZ is the root-mean-square of all Z scores of the bond lengths (or angles).

Mol	Type	Chain	Res	Link	Bond lengths			Bond angles		
					Counts	RMSZ	$\# Z > 2$	Counts	RMSZ	$\# Z > 2$
4	NAG	A	1119	1	14,14,15	0.53	0	15,19,21	1.03	1 (6%)
4	NAG	B	1368	2	14,14,15	0.54	0	15,19,21	0.93	1 (6%)
6	GDI	B	1369	2	26,29,29	0.66	0	32,38,38	1.16	2 (6%)
4	NAG	E	1368	2	14,14,15	0.51	0	15,19,21	1.32	2 (13%)
6	GDI	E	1369	2	26,29,29	0.58	0	32,38,38	1.09	2 (6%)

In the following table, the Chirals column lists the number of chiral outliers, the number of chiral centers analysed, the number of these observed in the model and the number defined in the chemical component dictionary. Similar counts are reported in the Torsion and Rings columns. '-' means no outliers of that kind were identified.

Mol	Type	Chain	Res	Link	Chirals	Torsions	Rings
4	NAG	A	1119	1	-	0/6/23/26	0/1/1/1
4	NAG	B	1368	2	-	0/6/23/26	0/1/1/1
6	GDI	B	1369	2	-	0/18/28/28	0/3/3/3
4	NAG	E	1368	2	-	0/6/23/26	0/1/1/1
6	GDI	E	1369	2	-	0/18/28/28	0/3/3/3

There are no bond length outliers.

All (8) bond angle outliers are listed below:

Mol	Chain	Res	Type	Atoms	Z	Observed($^{\circ}$)	Ideal($^{\circ}$)
6	B	1369	GDI	C6-C5-C4	-3.28	105.95	111.04
6	B	1369	GDI	C13-C12-C10	-3.05	109.01	114.26
6	E	1369	GDI	C20-C19-C16	-2.23	117.39	121.39
6	E	1369	GDI	C13-C12-C10	-2.23	110.42	114.26
4	B	1368	NAG	O5-C5-C6	2.26	112.24	107.35
4	A	1119	NAG	C2-N2-C7	2.37	126.08	123.04
4	E	1368	NAG	C8-C7-N2	2.52	120.94	116.11
4	E	1368	NAG	C1-O5-C5	3.27	116.39	112.25

There are no chirality outliers.

There are no torsion outliers.

There are no ring outliers.

2 monomers are involved in 2 short contacts:

Mol	Chain	Res	Type	Clashes	Symm-Clashes
6	B	1369	GDI	1	0
6	E	1369	GDI	1	0

5.7 Other polymers [i](#)

There are no such residues in this entry.

5.8 Polymer linkage issues [i](#)

There are no chain breaks in this entry.

6 Fit of model and data

6.1 Protein, DNA and RNA chains

In the following table, the column labelled ‘#RSRZ> 2’ contains the number (and percentage) of RSRZ outliers, followed by percent RSRZ outliers for the chain as percentile scores relative to all X-ray entries and entries of similar resolution. The OWAB column contains the minimum, median, 95th percentile and maximum values of the occupancy-weighted average B-factor per residue. The column labelled ‘Q< 0.9’ lists the number of (and percentage) of residues with an average occupancy less than 0.9.

Mol	Chain	Analysed	<RSRZ>	#RSRZ>2	OWAB(Å ²)	Q<0.9
1	A	118/120 (98%)	0.52	10 (8%) 13 21	33, 51, 84, 124	0
1	D	115/120 (95%)	1.06	22 (19%) 2 3	35, 57, 103, 120	0
2	B	162/165 (98%)	0.29	7 (4%) 39 53	33, 49, 77, 90	0
2	E	161/165 (97%)	0.48	16 (9%) 9 16	36, 62, 94, 107	0
3	C	68/69 (98%)	0.33	3 (4%) 38 52	35, 51, 79, 94	0
3	F	68/69 (98%)	0.35	6 (8%) 12 20	37, 64, 98, 119	0
All	All	692/708 (97%)	0.51	64 (9%) 11 18	33, 55, 92, 124	0

All (64) RSRZ outliers are listed below:

Mol	Chain	Res	Type	RSRZ
1	D	119	GLY	8.4
1	D	93	TYR	7.1
1	A	86	GLU	7.0
1	D	120	THR	6.9
1	D	32	VAL	5.8
1	D	33	MET	5.4
3	F	393	ALA	5.1
2	E	308	LYS	5.0
3	C	395	GLY	5.0
1	D	23	GLY	4.8
1	A	85	GLU	4.3
1	D	91	THR	4.1
1	D	21	SER	4.1
1	A	89	LYS	4.0
1	A	88	SER	4.0
1	D	37	GLU	4.0
2	E	217	HIS	3.9
1	A	32	VAL	3.9
2	B	311	GLU	3.8

Continued on next page...

Continued from previous page...

Mol	Chain	Res	Type	RSRZ
2	E	363	ILE	3.6
1	A	54	LEU	3.6
3	F	394	SER	3.5
2	E	311	GLU	3.5
1	D	4	ALA	3.4
1	D	35	PRO	3.4
3	C	396	MET	3.3
2	B	218	GLY	3.2
1	A	87	GLY	3.1
2	E	208	PRO	3.1
1	D	90	VAL	3.0
1	D	27	ASP	3.0
2	E	216	VAL	3.0
1	A	93	TYR	3.0
1	D	54	LEU	2.9
3	F	395	GLY	2.7
2	B	206	HIS	2.7
2	E	309	MET	2.6
2	E	312	ASP	2.6
2	E	296	ALA	2.6
1	D	28	VAL	2.6
1	D	118	VAL	2.6
2	B	367	THR	2.6
2	E	209	THR	2.5
1	D	84	LYS	2.5
2	B	353	TYR	2.5
3	F	391	ASP	2.4
1	D	30	CYS	2.4
2	E	307	CYS	2.4
1	D	82	LYS	2.4
2	E	218	GLY	2.3
2	E	365	HIS	2.3
1	A	90	VAL	2.3
3	F	392	SER	2.3
2	E	253	ASN	2.3
2	E	219	ILE	2.2
2	B	360	LYS	2.2
2	E	361	LYS	2.2
3	C	393	ALA	2.2
1	D	20	GLY	2.1
1	A	51	TYR	2.1
3	F	396	MET	2.1

Continued on next page...

Continued from previous page...

Mol	Chain	Res	Type	RSRZ
1	D	94	CYS	2.1
2	B	312	ASP	2.0
1	D	5	ASN	2.0

6.2 Non-standard residues in protein, DNA, RNA chains [i](#)

There are no non-standard protein/DNA/RNA residues in this entry.

6.3 Carbohydrates [i](#)

In the following table, the Atoms column lists the number of modelled atoms in the group and the number defined in the chemical component dictionary. LLDF column lists the quality of electron density of the group with respect to its neighbouring residues in protein, DNA or RNA chains. The B-factors column lists the minimum, median, 95th percentile and maximum values of B factors of atoms in the group. The column labelled 'Q< 0.9' lists the number of atoms with occupancy less than 0.9.

Mol	Type	Chain	Res	Atoms	RSCC	RSR	LLDF	B-factors(Å ²)	Q<0.9
5	NAG	A	1120	14/15	0.91	0.29	2.09	63,76,82,87	0
5	NAG	A	1121	14/15	0.81	0.38	-	64,84,97,99	0

6.4 Ligands [i](#)

In the following table, the Atoms column lists the number of modelled atoms in the group and the number defined in the chemical component dictionary. LLDF column lists the quality of electron density of the group with respect to its neighbouring residues in protein, DNA or RNA chains. The B-factors column lists the minimum, median, 95th percentile and maximum values of B factors of atoms in the group. The column labelled 'Q< 0.9' lists the number of atoms with occupancy less than 0.9.

Mol	Type	Chain	Res	Atoms	RSCC	RSR	LLDF	B-factors(Å ²)	Q<0.9
7	CL	E	1370	1/1	0.97	0.17	1.53	46,46,46,46	0
6	GDI	E	1369	27/27	0.88	0.19	0.80	53,60,65,74	0
7	CL	B	1370	1/1	0.99	0.20	0.73	43,43,43,43	0
4	NAG	B	1368	14/15	0.87	0.24	0.61	62,77,88,97	0
6	GDI	B	1369	27/27	0.91	0.15	0.55	38,49,52,57	0
4	NAG	A	1119	14/15	0.80	0.39	-	95,110,115,118	0
4	NAG	E	1368	14/15	0.91	0.22	-	78,90,99,100	0

6.5 Other polymers

There are no such residues in this entry.