



# Full wwPDB X-ray Structure Validation Report ⓘ

Feb 1, 2016 – 07:53 AM GMT

PDB ID : 3CJ2  
Title : Crystal structure of hepatitis c virus rna-dependent rna polymerase ns5b in complex with optimized small molecule fragments  
Authors : Kissinger, c.  
Deposited on : 2008-03-12  
Resolution : 1.75 Å(reported)

This is a Full wwPDB X-ray Structure Validation Report for a publicly released PDB entry.  
We welcome your comments at [validation@mail.wwpdb.org](mailto:validation@mail.wwpdb.org)  
A user guide is available at  
<http://wwpdb.org/validation/2016/XrayValidationReportHelp>  
with specific help available everywhere you see the ⓘ symbol.

---

The following versions of software and data (see [references ⓘ](#)) were used in the production of this report:

MolProbity : 4.02b-467  
Mogul : 1.7 (RC4), CSD as536be (2015)  
Xtriage (Phenix) : 1.9-1692  
EDS : rb-20026688  
Percentile statistics : 20151230.v01 (using entries in the PDB archive December 30th 2015)  
Refmac : 5.8.0135  
CCP4 : 6.5.0  
Ideal geometry (proteins) : Engh & Huber (2001)  
Ideal geometry (DNA, RNA) : Parkinson et al. (1996)  
Validation Pipeline (wwPDB-VP) : trunk26865

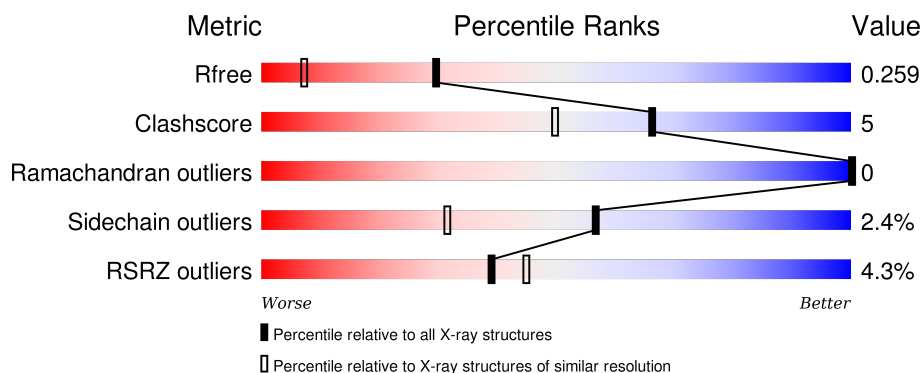
# 1 Overall quality at a glance

The following experimental techniques were used to determine the structure:

## *X-RAY DIFFRACTION*



The reported resolution of this entry is 1.75 Å.

Percentile scores (ranging between 0-100) for global validation metrics of the entry are shown in the following graphic. The table shows the number of entries on which the scores are based.



Metric	Whole archive (#Entries)	Similar resolution (#Entries, resolution range(Å))
$R_{free}$	91344	1609 (1.76-1.76)
Clashscore	102246	1730 (1.76-1.76)
Ramachandran outliers	100387	1711 (1.76-1.76)
Sidechain outliers	100360	1711 (1.76-1.76)
RSRZ outliers	91569	1610 (1.76-1.76)

The table below summarises the geometric issues observed across the polymeric chains and their fit to the electron density. The red, orange, yellow and green segments on the lower bar indicate the fraction of residues that contain outliers for  $\geq 3$ , 2, 1 and 0 types of geometric quality criteria. A grey segment represents the fraction of residues that are not modelled. The numeric value for each fraction is indicated below the corresponding segment, with a dot representing fractions  $\leq 5\%$ . The upper red bar (where present) indicates the fraction of residues that have poor fit to the electron density. The numeric value is given above the bar.

Mol	Chain	Length	Quality of chain
1	A	576	 4% 85% 10% • •
1	B	576	 4% 86% 10% • •

## 2 Entry composition

There are 4 unique types of molecules in this entry. The entry contains 9023 atoms, of which 0 are hydrogens and 0 are deuteriums.

In the tables below, the ZeroOcc column contains the number of atoms modelled with zero occupancy, the AltConf column contains the number of residues with at least one atom in alternate conformation and the Trace column contains the number of residues modelled with at most 2 atoms.

- Molecule 1 is a protein called RNA-directed RNA polymerase.

Mol	Chain	Residues	Atoms					ZeroOcc	AltConf	Trace
1	A	557	Total	C	N	O	S	0	6	0
			4304	2723	753	794	34			
1	B	557	Total	C	N	O	S	0	4	0
			4313	2723	757	800	33			

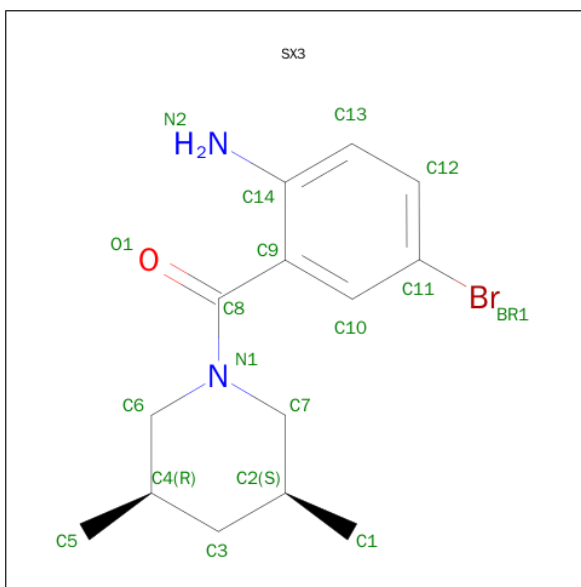
There are 14 discrepancies between the modelled and reference sequences:

Chain	Residue	Modelled	Actual	Comment	Reference
A	-5	MET	-	expression tag	UNP P26663
A	-4	HIS	-	expression tag	UNP P26663
A	-3	HIS	-	expression tag	UNP P26663
A	-2	HIS	-	expression tag	UNP P26663
A	-1	HIS	-	expression tag	UNP P26663
A	0	HIS	-	expression tag	UNP P26663
A	1	HIS	-	expression tag	UNP P26663
B	-5	MET	-	expression tag	UNP P26663
B	-4	HIS	-	expression tag	UNP P26663
B	-3	HIS	-	expression tag	UNP P26663
B	-2	HIS	-	expression tag	UNP P26663
B	-1	HIS	-	expression tag	UNP P26663
B	0	HIS	-	expression tag	UNP P26663
B	1	HIS	-	expression tag	UNP P26663

- Molecule 2 is NICKEL (II) ION (three-letter code: NI) (formula: Ni).

Mol	Chain	Residues	Atoms		ZeroOcc	AltConf
2	A	2	Total	Ni	0	0
			2	2		

- Molecule 3 is 4-BROMO-2-[(3R,5S)-3,5-DIMETHYLPYPERIDIN-1-YL]CARBONYL}ANILINE (three-letter code: SX3) (formula: C<sub>14</sub>H<sub>19</sub>BrN<sub>2</sub>O).



Mol	Chain	Residues	Atoms					ZeroOcc	AltConf
3	A	1	Total	Br	C	N	O	0	0
			18	1	14	2	1		
3	B	1	Total	Br	C	N	O	0	0
			18	1	14	2	1		

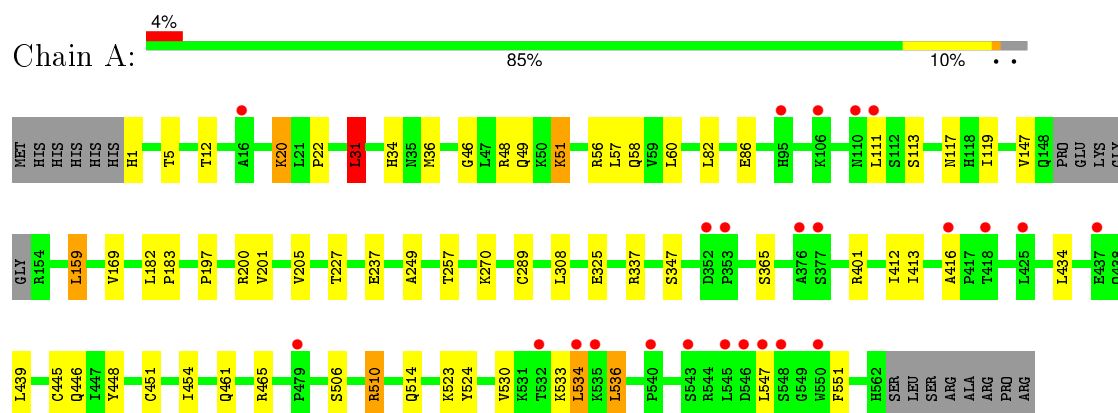
- Molecule 4 is water.

Mol	Chain	Residues	Atoms		ZeroOcc	AltConf
4	A	168	Total	O	0	0
			168	168		
4	B	200	Total	O	0	0
			200	200		

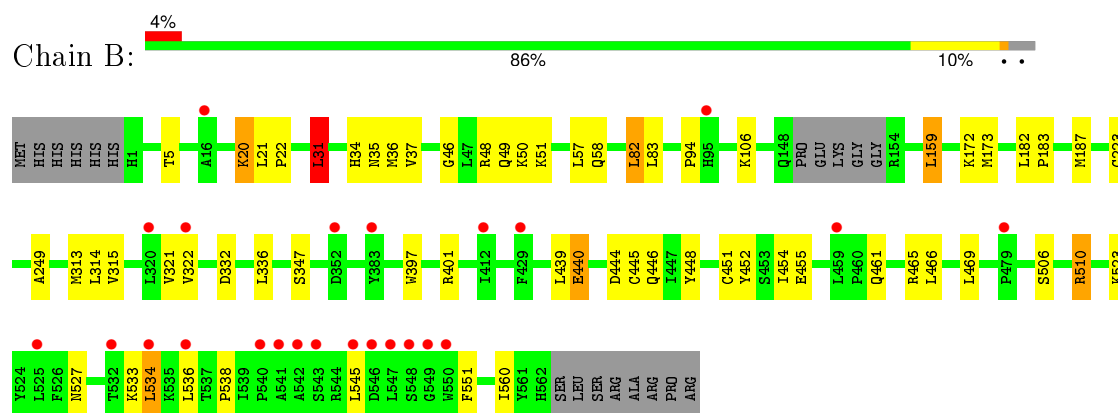
### 3 Residue-property plots

These plots are drawn for all protein, RNA and DNA chains in the entry. The first graphic for a chain summarises the proportions of errors displayed in the second graphic. The second graphic shows the sequence view annotated by issues in geometry and electron density. Residues are color-coded according to the number of geometric quality criteria for which they contain at least one outlier: green = 0, yellow = 1, orange = 2 and red = 3 or more. A red dot above a residue indicates a poor fit to the electron density ( $RSRZ > 2$ ). Stretches of 2 or more consecutive residues without any outlier are shown as a green connector. Residues present in the sample, but not in the model, are shown in grey.

#### • Molecule 1: RNA-directed RNA polymerase



#### • Molecule 1: RNA-directed RNA polymerase



## 4 Data and refinement statistics

Property	Value	Source
Space group	P 1 21 1	Depositor
Cell constants a, b, c, $\alpha$ , $\beta$ , $\gamma$	56.22Å 86.13Å 120.27Å 90.00° 96.54° 90.00°	Depositor
Resolution (Å)	(Not available) – 1.75 23.42 – 1.75	Depositor EDS
% Data completeness (in resolution range)	(Not available) ((Not available)-1.75) 96.2 (23.42-1.75)	Depositor EDS
$R_{merge}$	(Not available)	Depositor
$R_{sym}$	(Not available)	Depositor
$\langle I/\sigma(I) \rangle$ <sup>1</sup>	1.51 (at 1.75Å)	Xtriage
Refinement program	REFMAC5	Depositor
R, $R_{free}$	0.210 , 0.260 0.208 , 0.259	Depositor DCC
$R_{free}$ test set	5533 reflections (5.28%)	DCC
Wilson B-factor (Å <sup>2</sup> )	20.8	Xtriage
Anisotropy	0.525	Xtriage
Bulk solvent $k_{sol}$ (e/Å <sup>3</sup> ), $B_{sol}$ (Å <sup>2</sup> )	0.40 , 54.9	EDS
Estimated twinning fraction	No twinning to report.	Xtriage
L-test for twinning <sup>2</sup>	$\langle  L  \rangle = 0.49$ , $\langle L^2 \rangle = 0.32$	Xtriage
Outliers	1 of 110317 reflections (0.001%)	Xtriage
$F_o, F_c$ correlation	0.95	EDS
Total number of atoms	9023	wwPDB-VP
Average B, all atoms (Å <sup>2</sup> )	24.0	wwPDB-VP

Xtriage's analysis on translational NCS is as follows: *The largest off-origin peak in the Patterson function is 4.57% of the height of the origin peak. No significant pseudotranslation is detected.*

<sup>1</sup>Intensities estimated from amplitudes.

<sup>2</sup>Theoretical values of  $\langle |L| \rangle$ ,  $\langle L^2 \rangle$  for acentric reflections are 0.5, 0.375 respectively for untwinned datasets, and 0.333, 0.2 for perfectly twinned datasets.

## 5 Model quality [i](#)

### 5.1 Standard geometry [i](#)

Bond lengths and bond angles in the following residue types are not validated in this section: NI, SX3

The Z score for a bond length (or angle) is the number of standard deviations the observed value is removed from the expected value. A bond length (or angle) with  $|Z| > 5$  is considered an outlier worth inspection. RMSZ is the root-mean-square of all Z scores of the bond lengths (or angles).

Mol	Chain	Bond lengths		Bond angles	
		RMSZ	$\# Z  > 5$	RMSZ	$\# Z  > 5$
1	A	0.69	0/4423	0.73	1/6010 (0.0%)
1	B	0.75	1/4424 (0.0%)	0.76	2/6012 (0.0%)
All	All	0.72	1/8847 (0.0%)	0.75	3/12022 (0.0%)

All (1) bond length outliers are listed below:

Mol	Chain	Res	Type	Atoms	Z	Observed(Å)	Ideal(Å)
1	B	397	TRP	CE3-CZ3	5.30	1.47	1.38

All (3) bond angle outliers are listed below:

Mol	Chain	Res	Type	Atoms	Z	Observed(°)	Ideal(°)
1	A	31	LEU	CA-CB-CG	8.47	134.78	115.30
1	B	31	LEU	CA-CB-CG	6.85	131.06	115.30
1	B	82	LEU	CA-CB-CG	5.61	128.19	115.30

There are no chirality outliers.

There are no planarity outliers.

### 5.2 Too-close contacts [i](#)

In the following table, the Non-H and H(model) columns list the number of non-hydrogen atoms and hydrogen atoms in the chain respectively. The H(added) column lists the number of hydrogen atoms added and optimized by MolProbity. The Clashes column lists the number of clashes within the asymmetric unit, whereas Symm-Clashes lists symmetry related clashes.

Mol	Chain	Non-H	H(model)	H(added)	Clashes	Symm-Clashes
1	A	4304	0	4272	39	0
1	B	4313	0	4277	44	0

*Continued on next page...*

*Continued from previous page...*

Mol	Chain	Non-H	H(model)	H(added)	Clashes	Symm-Clashes
2	A	2	0	0	0	0
3	A	18	0	19	0	0
3	B	18	0	19	0	0
4	A	168	0	0	6	0
4	B	200	0	0	8	0
All	All	9023	0	8587	83	0

The all-atom clashscore is defined as the number of clashes found per 1000 atoms (including hydrogen atoms). The all-atom clashscore for this structure is 5.

All (83) close contacts within the same asymmetric unit are listed below, sorted by their clash magnitude.

Atom-1	Atom-2	Interatomic distance (Å)	Clash overlap (Å)
1:A:510:ARG:HH11	1:A:510:ARG:HG2	1.11	1.10
1:B:510:ARG:HH11	1:B:510:ARG:HG2	1.07	1.09
1:A:510:ARG:NH1	1:A:510:ARG:HG2	1.85	0.89
1:B:455:GLU:HB3	4:B:673:HOH:O	1.77	0.83
1:B:510:ARG:NH1	1:B:510:ARG:HG2	1.85	0.81
1:B:46:GLY:HA2	1:B:49:GLN:HE21	1.53	0.73
1:B:510:ARG:CG	1:B:510:ARG:HH11	1.97	0.71
1:B:82:LEU:HD13	1:B:249:ALA:HB2	1.73	0.70
1:B:313:MET:HG2	1:B:322:VAL:HG22	1.73	0.69
1:A:465:ARG:HG2	1:A:547:LEU:HD22	1.76	0.68
1:A:82:LEU:HD13	1:A:249:ALA:HB2	1.75	0.67
1:A:182:LEU:HD23	1:A:182:LEU:C	2.18	0.64
1:A:46:GLY:HA2	1:A:49:GLN:HE21	1.61	0.64
1:A:445:CYS:SG	1:A:454:ILE:HD12	2.38	0.64
1:A:197:PRO:O	1:A:201:VAL:HG23	2.01	0.61
1:B:35:ASN:HB2	4:B:714:HOH:O	2.02	0.60
1:B:48:ARG:HG2	1:B:159:LEU:HD22	1.84	0.59
1:A:325:GLU:HG3	4:A:855:HOH:O	2.02	0.59
1:A:201:VAL:O	1:A:205:VAL:HG23	2.02	0.59
1:A:523:LYS:HG3	1:A:534:LEU:HD23	1.85	0.59
1:A:22:PRO:HG2	1:A:401:ARG:HG3	1.84	0.58
1:B:20:LYS:H	1:B:20:LYS:HZ2	1.52	0.58
1:A:119:ILE:HD13	1:A:169:VAL:HG11	1.86	0.56
1:B:510:ARG:NH1	4:B:653:HOH:O	2.39	0.56
1:A:48:ARG:HG2	1:A:159:LEU:HD13	1.86	0.56
1:A:86:GLU:HG3	1:A:111:LEU:HD22	1.87	0.55
1:A:51:LYS:NZ	1:A:51:LYS:HB2	2.21	0.54
1:B:5:THR:HG23	4:B:614:HOH:O	2.08	0.54

*Continued on next page...*



*Continued from previous page...*

Atom-1	Atom-2	Interatomic distance (Å)	Clash overlap (Å)
1:A:510:ARG:HG2	4:A:827:HOH:O	2.09	0.53
1:B:440:GLU:HA	4:B:673:HOH:O	2.08	0.53
1:B:533:LYS:HE2	4:B:725:HOH:O	2.09	0.53
1:A:530:VAL:O	1:A:533:LYS:HE3	2.10	0.52
1:A:446:GLN:HG2	1:A:451[A]:CYS:SG	2.49	0.52
1:B:445:CYS:SG	1:B:454:ILE:HD12	2.49	0.52
1:B:314:LEU:HB3	1:B:321:VAL:HG13	1.92	0.51
1:A:412:ILE:O	1:A:416:ALA:HB2	2.11	0.51
1:B:36:MET:HE2	1:B:36:MET:HA	1.93	0.50
1:B:510:ARG:CG	1:B:510:ARG:NH1	2.62	0.50
1:B:465:ARG:NH2	1:B:545:LEU:O	2.45	0.50
1:B:48:ARG:CG	1:B:159:LEU:HD22	2.42	0.49
1:B:314:LEU:HB3	1:B:321:VAL:CG1	2.43	0.49
1:A:448:TYR:CE2	1:A:551:PHE:HD1	2.31	0.48
1:A:113:SER:O	1:A:117:ASN:HB2	2.13	0.48
1:A:86:GLU:HA	1:A:111:LEU:HD21	1.95	0.48
1:B:506:SER:O	1:B:510:ARG:HD3	2.13	0.48
1:B:469:LEU:HD11	1:B:538:PRO:HD3	1.95	0.47
1:B:446:GLN:HG2	1:B:451[B]:CYS:SG	2.54	0.47
1:B:22:PRO:HG2	1:B:401:ARG:HG3	1.97	0.47
1:B:172:LYS:HE3	1:B:560:ILE:HD13	1.98	0.46
1:A:524:TYR:CD2	1:A:536:LEU:HG	2.51	0.46
1:A:337:ARG:HD3	4:A:862:HOH:O	2.16	0.46
1:A:200:ARG:NH2	1:A:365:SER:OG	2.44	0.46
1:A:5:THR:HG23	4:A:834:HOH:O	2.16	0.46
1:A:1:HIS:N	4:A:866:HOH:O	2.48	0.46
1:B:466:LEU:HD22	1:B:551:PHE:HE2	1.81	0.46
1:B:523:LYS:HG3	1:B:534:LEU:HD23	1.97	0.46
1:B:448:TYR:CE2	1:B:551:PHE:HD1	2.35	0.45
1:B:83:LEU:HB2	1:B:173:MET:HA	1.98	0.45
4:A:830:HOH:O	1:B:57:LEU:HG	2.17	0.44
1:B:223:CYS:HB3	4:B:648:HOH:O	2.17	0.44
1:B:31:LEU:HD23	1:B:34:HIS:HD2	1.81	0.44
1:B:58:GLN:HG3	1:B:347:SER:HB2	1.98	0.44
1:B:187[A]:MET:HE1	1:B:315:VAL:HB	1.99	0.44
1:B:440:GLU:CD	1:B:440:GLU:H	2.20	0.43
1:A:12:THR:HG21	1:A:270:LYS:HD2	2.00	0.43
1:A:183:PRO:HG3	1:A:289:CYS:SG	2.58	0.43
1:A:227:THR:HB	1:A:347:SER:O	2.19	0.43
1:B:461:GLN:HB3	1:B:545:LEU:HD11	2.00	0.43
1:B:332:ASP:O	1:B:336:LEU:HD13	2.18	0.43

*Continued on next page...*

Continued from previous page...

Atom-1	Atom-2	Interatomic distance (Å)	Clash overlap (Å)
1:A:20:LYS:HE3	1:A:20:LYS:H	1.82	0.43
1:B:527:ASN:O	1:B:533:LYS:HE3	2.19	0.42
1:A:434:LEU:HD23	1:A:514:GLN:HE21	1.85	0.42
1:B:94:PRO:HD2	4:B:670:HOH:O	2.19	0.42
1:B:21:LEU:HD13	1:B:37:VAL:HG11	2.01	0.42
1:A:413:ILE:CD1	1:A:454:ILE:HD13	2.49	0.42
1:A:58:GLN:HG2	1:A:60:LEU:HD21	2.00	0.42
1:A:36:MET:O	1:A:147:VAL:HG13	2.20	0.42
1:A:31:LEU:HD23	1:A:34:HIS:HD2	1.85	0.42
1:B:182:LEU:N	1:B:183:PRO:CD	2.82	0.42
1:B:51:LYS:HE2	1:B:51:LYS:HB2	1.69	0.41
1:A:237:GLU:HG3	1:A:257:THR:OG1	2.20	0.41
1:B:444:ASP:HA	1:B:452:TYR:O	2.21	0.40
1:A:506:SER:O	1:A:510:ARG:HD3	2.21	0.40

There are no symmetry-related clashes.

## 5.3 Torsion angles [i](#)

### 5.3.1 Protein backbone [i](#)

In the following table, the Percentiles column shows the percent Ramachandran outliers of the chain as a percentile score with respect to all X-ray entries followed by that with respect to entries of similar resolution.

The Analysed column shows the number of residues for which the backbone conformation was analysed, and the total number of residues.

Mol	Chain	Analysed	Favoured	Allowed	Outliers	Percentiles	
1	A	559/576 (97%)	550 (98%)	9 (2%)	0	100	100
1	B	557/576 (97%)	548 (98%)	9 (2%)	0	100	100
All	All	1116/1152 (97%)	1098 (98%)	18 (2%)	0	100	100

There are no Ramachandran outliers to report.

### 5.3.2 Protein sidechains [i](#)

In the following table, the Percentiles column shows the percent sidechain outliers of the chain as a percentile score with respect to all X-ray entries followed by that with respect to entries of similar resolution.

The Analysed column shows the number of residues for which the sidechain conformation was analysed, and the total number of residues.

Mol	Chain	Analysed	Rotameric	Outliers	Percentiles	
1	A	465/491 (95%)	453 (97%)	12 (3%)	54	28
1	B	468/491 (95%)	458 (98%)	10 (2%)	61	37
All	All	933/982 (95%)	911 (98%)	22 (2%)	57	31

All (22) residues with a non-rotameric sidechain are listed below:

Mol	Chain	Res	Type
1	A	20	LYS
1	A	31	LEU
1	A	51	LYS
1	A	56	ARG
1	A	57	LEU
1	A	159	LEU
1	A	308	LEU
1	A	439	LEU
1	A	461	GLN
1	A	510	ARG
1	A	534	LEU
1	A	536	LEU
1	B	20	LYS
1	B	31	LEU
1	B	50	LYS
1	B	106	LYS
1	B	159	LEU
1	B	439	LEU
1	B	440	GLU
1	B	510	ARG
1	B	534	LEU
1	B	536	LEU

Some sidechains can be flipped to improve hydrogen bonding and reduce clashes. All (9) such sidechains are listed below:

Mol	Chain	Res	Type
1	A	34	HIS
1	A	49	GLN
1	A	117	ASN
1	A	446	GLN
1	A	514	GLN

*Continued on next page...*

*Continued from previous page...*

Mol	Chain	Res	Type
1	B	34	HIS
1	B	49	GLN
1	B	273	ASN
1	B	483	ASN

### 5.3.3 RNA [i](#)

There are no RNA molecules in this entry.

### 5.4 Non-standard residues in protein, DNA, RNA chains [i](#)

There are no non-standard protein/DNA/RNA residues in this entry.

### 5.5 Carbohydrates [i](#)

There are no carbohydrates in this entry.

### 5.6 Ligand geometry [i](#)

Of 4 ligands modelled in this entry, 2 are monoatomic - leaving 2 for Mogul analysis.

In the following table, the Counts columns list the number of bonds (or angles) for which Mogul statistics could be retrieved, the number of bonds (or angles) that are observed in the model and the number of bonds (or angles) that are defined in the chemical component dictionary. The Link column lists molecule types, if any, to which the group is linked. The Z score for a bond length (or angle) is the number of standard deviations the observed value is removed from the expected value. A bond length (or angle) with  $|Z| > 2$  is considered an outlier worth inspection. RMSZ is the root-mean-square of all Z scores of the bond lengths (or angles).

Mol	Type	Chain	Res	Link	Bond lengths			Bond angles		
					Counts	RMSZ	$\# Z  > 2$	Counts	RMSZ	$\# Z  > 2$
3	SX3	A	571	-	19,19,19	0.92	1 (5%)	24,27,27	1.92	3 (12%)
3	SX3	B	571	-	19,19,19	0.93	0	24,27,27	1.90	3 (12%)

In the following table, the Chirals column lists the number of chiral outliers, the number of chiral centers analysed, the number of these observed in the model and the number defined in the chemical component dictionary. Similar counts are reported in the Torsion and Rings columns. '-' means no outliers of that kind were identified.

Mol	Type	Chain	Res	Link	Chirals	Torsions	Rings
3	SX3	A	571	-	-	0/8/20/20	0/2/2/2
3	SX3	B	571	-	-	0/8/20/20	0/2/2/2

All (1) bond length outliers are listed below:

Mol	Chain	Res	Type	Atoms	Z	Observed(Å)	Ideal(Å)
3	A	571	SX3	C8-N1	2.68	1.40	1.34

All (6) bond angle outliers are listed below:

Mol	Chain	Res	Type	Atoms	Z	Observed(°)	Ideal(°)
3	A	571	SX3	O1-C8-C9	-2.68	114.68	120.14
3	B	571	SX3	C3-C2-C7	3.00	114.12	109.63
3	B	571	SX3	C9-C8-N1	3.47	122.18	118.29
3	A	571	SX3	C14-C9-C8	4.62	123.50	120.13
3	A	571	SX3	C9-C8-N1	6.69	125.79	118.29
3	B	571	SX3	C14-C9-C8	6.93	125.19	120.13

There are no chirality outliers.

There are no torsion outliers.

There are no ring outliers.

No monomer is involved in short contacts.

## 5.7 Other polymers [i](#)

There are no such residues in this entry.

## 5.8 Polymer linkage issues [i](#)

There are no chain breaks in this entry.

## 6 Fit of model and data ⓘ

### 6.1 Protein, DNA and RNA chains ⓘ

In the following table, the column labelled ‘#RSRZ> 2’ contains the number (and percentage) of RSRZ outliers, followed by percent RSRZ outliers for the chain as percentile scores relative to all X-ray entries and entries of similar resolution. The OWAB column contains the minimum, median, 95<sup>th</sup> percentile and maximum values of the occupancy-weighted average B-factor per residue. The column labelled ‘Q< 0.9’ lists the number of (and percentage) of residues with an average occupancy less than 0.9.

Mol	Chain	Analysed	<RSRZ>	#RSRZ>2		OWAB(Å <sup>2</sup> )	Q<0.9
1	A	557/576 (96%)	0.28	24 (4%)	39 45	11, 24, 43, 56	0
1	B	557/576 (96%)	0.20	24 (4%)	39 45	11, 21, 39, 65	0
All	All	1114/1152 (96%)	0.24	48 (4%)	39 45	11, 23, 43, 65	0

All (48) RSRZ outliers are listed below:

Mol	Chain	Res	Type	RSRZ
1	A	543	SER	4.3
1	A	376	ALA	4.1
1	A	545	LEU	4.1
1	B	532	THR	3.9
1	A	546	ASP	3.8
1	B	548	SER	3.7
1	A	532	THR	3.7
1	B	534	LEU	3.7
1	B	546	ASP	3.5
1	B	95	HIS	3.3
1	B	547	LEU	3.2
1	B	352	ASP	3.1
1	A	534	LEU	3.1
1	A	352	ASP	3.0
1	A	425	LEU	3.0
1	A	95	HIS	2.9
1	B	16	ALA	2.8
1	B	541	ALA	2.7
1	A	540	PRO	2.7
1	B	550	TRP	2.7
1	A	416	ALA	2.7
1	A	479	PRO	2.6
1	A	437	GLU	2.6
1	B	459	LEU	2.5

*Continued on next page...*

*Continued from previous page...*

Mol	Chain	Res	Type	RSRZ
1	B	525	LEU	2.5
1	A	110	ASN	2.5
1	B	540	PRO	2.4
1	B	543	SER	2.4
1	A	353	PRO	2.4
1	A	548	SER	2.4
1	B	545	LEU	2.4
1	A	16	ALA	2.3
1	B	536	LEU	2.3
1	A	377	SER	2.3
1	B	549	GLY	2.2
1	B	383	TYR	2.2
1	B	542	ALA	2.2
1	A	550	TRP	2.1
1	A	418	THR	2.1
1	A	111	LEU	2.1
1	B	429	PHE	2.1
1	A	547	LEU	2.1
1	B	320	LEU	2.1
1	B	412	ILE	2.1
1	A	106	LYS	2.0
1	B	479	PRO	2.0
1	B	322	VAL	2.0
1	A	535	LYS	2.0

## 6.2 Non-standard residues in protein, DNA, RNA chains [i](#)

There are no non-standard protein/DNA/RNA residues in this entry.

## 6.3 Carbohydrates [i](#)

There are no carbohydrates in this entry.

## 6.4 Ligands [i](#)

In the following table, the Atoms column lists the number of modelled atoms in the group and the number defined in the chemical component dictionary. LLDF column lists the quality of electron density of the group with respect to its neighbouring residues in protein, DNA or RNA chains. The B-factors column lists the minimum, median, 95<sup>th</sup> percentile and maximum values of B factors of atoms in the group. The column labelled 'Q < 0.9' lists the number of atoms with occupancy less than 0.9.

Mol	Type	Chain	Res	Atoms	RSCC	RSR	LLDF	B-factors( $\text{\AA}^2$ )	Q<0.9
3	SX3	B	571	18/18	0.98	0.09	-0.78	22,28,36,36	0
3	SX3	A	571	18/18	0.98	0.09	-1.18	25,29,34,34	0
2	NI	A	727	1/1	0.92	0.17	-	49,49,49,49	0
2	NI	A	711	1/1	0.96	0.17	-	40,40,40,40	0

## 6.5 Other polymers [i](#)

There are no such residues in this entry.