



Full wwPDB X-ray Structure Validation Report ⓘ

Feb 1, 2016 – 07:56 AM GMT

PDB ID : 3CRB
Title : Crystal structure of the complex of C-lobe of lactoferrin with 2-chromenone at 2.6 Å resolution
Authors : Vikram, G.; Mir, R.; Sinha, M.; Singh, N.; Kaur, P.; Sharma, S.; Singh, T.P.
Deposited on : 2008-04-05
Resolution : 2.60 Å(reported)

This is a Full wwPDB X-ray Structure Validation Report for a publicly released PDB entry.
We welcome your comments at validation@mail.wwpdb.org
A user guide is available at
<http://wwpdb.org/validation/2016/XrayValidationReportHelp>
with specific help available everywhere you see the ⓘ symbol.

The following versions of software and data (see [references ⓘ](#)) were used in the production of this report:

MolProbity : 4.02b-467
Mogul : 1.7 (RC4), CSD as536be (2015)
Xtriage (Phenix) : 1.9-1692
EDS : rb-20026688
Percentile statistics : 20151230.v01 (using entries in the PDB archive December 30th 2015)
Refmac : 5.8.0135
CCP4 : 6.5.0
Ideal geometry (proteins) : Engh & Huber (2001)
Ideal geometry (DNA, RNA) : Parkinson et al. (1996)
Validation Pipeline (wwPDB-VP) : trunk26865

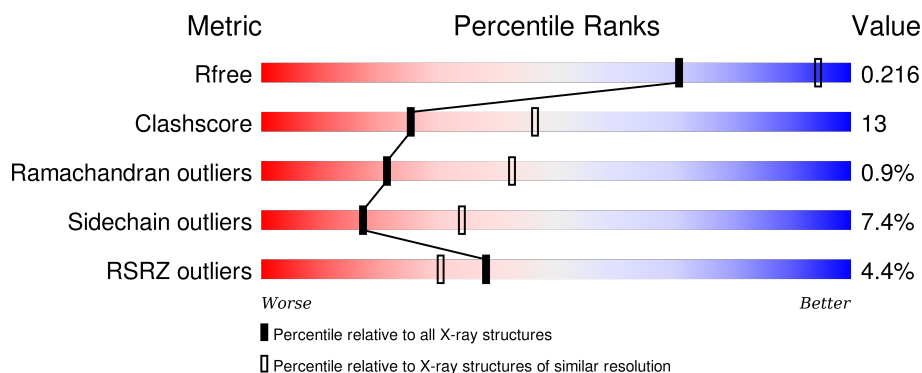
1 Overall quality at a glance

The following experimental techniques were used to determine the structure:

X-RAY DIFFRACTION

The reported resolution of this entry is 2.60 Å.

Percentile scores (ranging between 0-100) for global validation metrics of the entry are shown in the following graphic. The table shows the number of entries on which the scores are based.



Metric	Whole archive (#Entries)	Similar resolution (#Entries, resolution range(Å))
R_{free}	91344	2328 (2.60-2.60)
Clashscore	102246	2679 (2.60-2.60)
Ramachandran outliers	100387	2635 (2.60-2.60)
Sidechain outliers	100360	2635 (2.60-2.60)
RSRZ outliers	91569	2334 (2.60-2.60)

The table below summarises the geometric issues observed across the polymeric chains and their fit to the electron density. The red, orange, yellow and green segments on the lower bar indicate the fraction of residues that contain outliers for ≥ 3 , 2, 1 and 0 types of geometric quality criteria. A grey segment represents the fraction of residues that are not modelled. The numeric value for each fraction is indicated below the corresponding segment, with a dot representing fractions $\leq 5\%$. The upper red bar (where present) indicates the fraction of residues that have poor fit to the electron density. The numeric value is given above the bar.

Mol	Chain	Length	Quality of chain
1	A	345	<div> <div>4%</div> <div>72%</div> <div>24%</div> <div>..</div> </div>

The following table lists non-polymeric compounds, carbohydrate monomers and non-standard residues in protein, DNA, RNA chains that are outliers for geometric or electron-density-fit criteria:

Mol	Type	Chain	Res	Chirality	Geometry	Clashes	Electron density
2	NAG	A	687	-	-	-	X

Continued on next page...

Continued from previous page...

Mol	Type	Chain	Res	Chirality	Geometry	Clashes	Electron density
2	NAG	A	689	-	-	-	X

2 Entry composition [i](#)

There are 8 unique types of molecules in this entry. The entry contains 2852 atoms, of which 0 are hydrogens and 0 are deuteriums.

In the tables below, the ZeroOcc column contains the number of atoms modelled with zero occupancy, the AltConf column contains the number of residues with at least one atom in alternate conformation and the Trace column contains the number of residues modelled with at most 2 atoms.

- Molecule 1 is a protein called Lactotransferrin.

Mol	Chain	Residues	Atoms					ZeroOcc	AltConf	Trace
1	A	341	Total	C	N	O	S	0	0	0
			2604	1622	454	507	21			

There are 2 discrepancies between the modelled and reference sequences:

Chain	Residue	Modelled	Actual	Comment	Reference
A	565	LYS	ASN	SEE REMARK 999	UNP P24627
A	608	GLU	LYS	SEE REMARK 999	UNP P24627

- Molecule 2 is a polymer of unknown type called SUGAR (2-MER).

Mol	Chain	Residues	Atoms				ZeroOcc	AltConf
2	A	2	Total	C	N	O	0	0
			28	16	2	10		
2	A	2	Total	C	N	O	0	0
			28	16	2	10		
2	A	2	Total	C	N	O	0	0
			28	16	2	10		

- Molecule 3 is FE (III) ION (three-letter code: FE) (formula: Fe).

Mol	Chain	Residues	Atoms		ZeroOcc	AltConf
3	A	1	Total	Fe	0	0
			1	1		

- Molecule 4 is CARBONATE ION (three-letter code: CO3) (formula: CO₃).

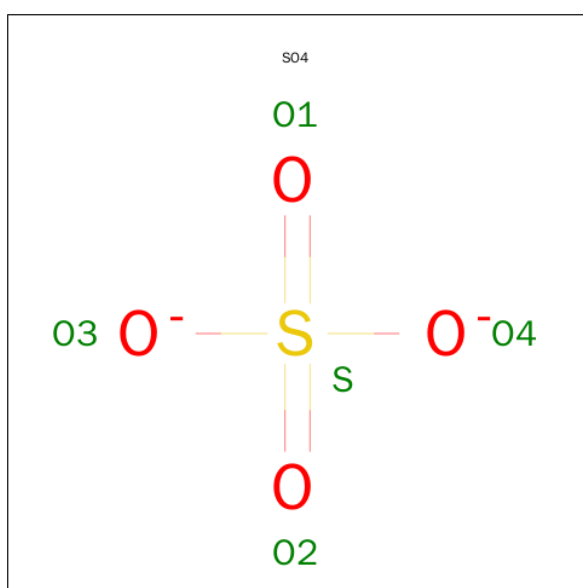


Mol	Chain	Residues	Atoms			ZeroOcc	AltConf
4	A	1	Total	C	O	0	0
			4	1	3		

- Molecule 5 is ZINC ION (three-letter code: ZN) (formula: Zn).

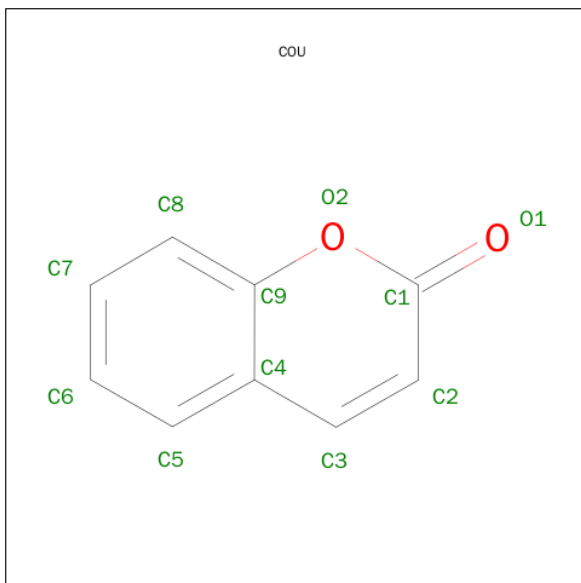
Mol	Chain	Residues	Atoms		ZeroOcc	AltConf
5	A	2	Total	Zn	0	0
			2	2		

- Molecule 6 is SULFATE ION (three-letter code: SO₄) (formula: O₄S).



Mol	Chain	Residues	Atoms			ZeroOcc	AltConf
6	A	1	Total	O	S	0	0
			5	4	1		

- Molecule 7 is COUMARIN (three-letter code: COU) (formula: C₉H₆O₂).



Mol	Chain	Residues	Atoms			ZeroOcc	AltConf
7	A	1	Total	C	O	0	0
			11	9	2		

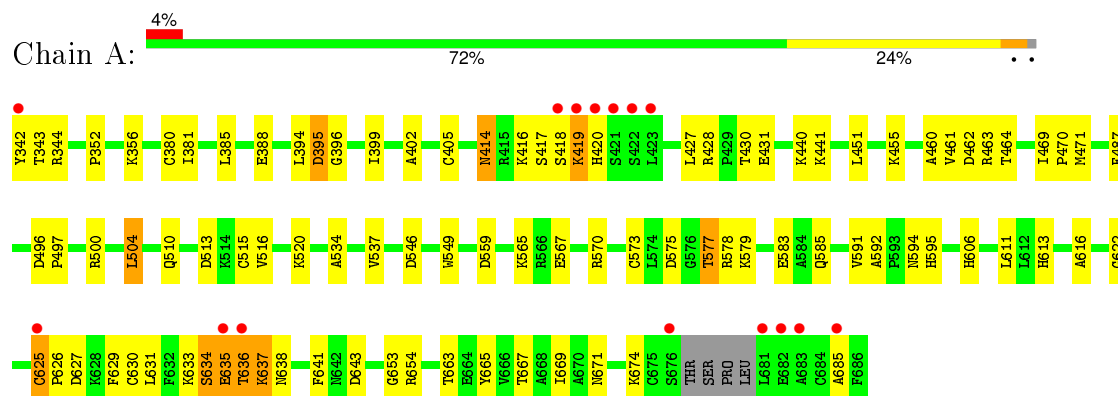
- Molecule 8 is water.

Mol	Chain	Residues	Atoms		ZeroOcc	AltConf
8	A	141	Total	O	0	0
			141	141		

3 Residue-property plots

These plots are drawn for all protein, RNA and DNA chains in the entry. The first graphic for a chain summarises the proportions of errors displayed in the second graphic. The second graphic shows the sequence view annotated by issues in geometry and electron density. Residues are color-coded according to the number of geometric quality criteria for which they contain at least one outlier: green = 0, yellow = 1, orange = 2 and red = 3 or more. A red dot above a residue indicates a poor fit to the electron density ($\text{RSRZ} > 2$). Stretches of 2 or more consecutive residues without any outlier are shown as a green connector. Residues present in the sample, but not in the model, are shown in grey.

• Molecule 1: Lactotransferrin



4 Data and refinement statistics

Property	Value	Source
Space group	P 1 21 1	Depositor
Cell constants a, b, c, α , β , γ	63.37Å 50.37Å 65.84Å 90.00° 107.81° 90.00°	Depositor
Resolution (Å)	20.00 – 2.60 19.82 – 2.58	Depositor EDS
% Data completeness (in resolution range)	86.8 (20.00-2.60) 90.8 (19.82-2.58)	Depositor EDS
R_{merge}	(Not available)	Depositor
R_{sym}	0.10	Depositor
$\langle I/\sigma(I) \rangle$ ¹	2.01 (at 2.56Å)	Xtriage
Refinement program	CNS	Depositor
R, R_{free}	0.183 , 0.211 0.192 , 0.216	Depositor DCC
R_{free} test set	583 reflections (5.16%)	DCC
Wilson B-factor (Å ²)	31.8	Xtriage
Anisotropy	0.252	Xtriage
Bulk solvent k_{sol} (e/Å ³), B_{sol} (Å ²)	0.32 , 52.4	EDS
Estimated twinning fraction	0.029 for l,-k,h	Xtriage
L-test for twinning ²	$\langle L \rangle = 0.48$, $\langle L^2 \rangle = 0.31$	Xtriage
Outliers	0 of 11530 reflections	Xtriage
F_o, F_c correlation	0.93	EDS
Total number of atoms	2852	wwPDB-VP
Average B, all atoms (Å ²)	32.0	wwPDB-VP

Xtriage's analysis on translational NCS is as follows: *The largest off-origin peak in the Patterson function is 8.20% of the height of the origin peak. No significant pseudotranslation is detected.*

¹Intensities estimated from amplitudes.

²Theoretical values of $\langle |L| \rangle$, $\langle L^2 \rangle$ for acentric reflections are 0.5, 0.375 respectively for untwinned datasets, and 0.333, 0.2 for perfectly twinned datasets.

5 Model quality [i](#)

5.1 Standard geometry [i](#)

Bond lengths and bond angles in the following residue types are not validated in this section: ZN, COU, NAG, CO3, SO4, FE

The Z score for a bond length (or angle) is the number of standard deviations the observed value is removed from the expected value. A bond length (or angle) with $|Z| > 5$ is considered an outlier worth inspection. RMSZ is the root-mean-square of all Z scores of the bond lengths (or angles).

Mol	Chain	Bond lengths		Bond angles	
		RMSZ	$\# Z > 5$	RMSZ	$\# Z > 5$
1	A	0.51	2/2652 (0.1%)	0.84	1/3591 (0.0%)

All (2) bond length outliers are listed below:

Mol	Chain	Res	Type	Atoms	Z	Observed(Å)	Ideal(Å)
1	A	388	GLU	CB-CG	5.33	1.62	1.52
1	A	388	GLU	CG-CD	5.28	1.59	1.51

All (1) bond angle outliers are listed below:

Mol	Chain	Res	Type	Atoms	Z	Observed($^{\circ}$)	Ideal($^{\circ}$)
1	A	510	GLN	CA-CB-CG	5.48	125.46	113.40

There are no chirality outliers.

There are no planarity outliers.

5.2 Too-close contacts [i](#)

In the following table, the Non-H and H(model) columns list the number of non-hydrogen atoms and hydrogen atoms in the chain respectively. The H(added) column lists the number of hydrogen atoms added and optimized by MolProbity. The Clashes column lists the number of clashes within the asymmetric unit, whereas Symm-Clashes lists symmetry related clashes.

Mol	Chain	Non-H	H(model)	H(added)	Clashes	Symm-Clashes
1	A	2604	0	2518	64	0
2	A	84	0	75	8	0
3	A	1	0	0	0	0
4	A	4	0	0	0	0
5	A	2	0	0	0	0

Continued on next page...

Continued from previous page...

Mol	Chain	Non-H	H(model)	H(added)	Clashes	Symm-Clashes
6	A	5	0	0	0	0
7	A	11	0	6	0	0
8	A	141	0	0	4	0
All	All	2852	0	2599	67	0

The all-atom clashscore is defined as the number of clashes found per 1000 atoms (including hydrogen atoms). The all-atom clashscore for this structure is 13.

All (67) close contacts within the same asymmetric unit are listed below, sorted by their clash magnitude.

Atom-1	Atom-2	Interatomic distance (Å)	Clash overlap (Å)
2:A:687:NAG:H61	2:A:688:NAG:C7	1.87	1.02
1:A:343:THR:HA	1:A:606:HIS:NE2	1.75	1.00
1:A:585:GLN:HE21	2:A:689:NAG:H81	1.25	0.98
1:A:585:GLN:NE2	2:A:689:NAG:H81	1.79	0.95
1:A:417:SER:HB3	1:A:431:GLU:OE2	1.71	0.90
1:A:585:GLN:HE21	2:A:689:NAG:C8	1.88	0.85
2:A:687:NAG:H61	2:A:688:NAG:N2	1.92	0.83
1:A:381:ILE:HD11	1:A:394:LEU:HD11	1.65	0.77
1:A:638:ASN:HD22	1:A:643:ASP:H	1.30	0.77
1:A:638:ASN:ND2	1:A:643:ASP:H	1.85	0.75
1:A:625:CYS:HA	1:A:629:PHE:O	1.87	0.74
1:A:575:ASP:OD1	1:A:577:THR:HB	1.90	0.71
1:A:395:ASP:HA	1:A:595:HIS:CD2	2.26	0.71
1:A:419:LYS:HE2	1:A:420:HIS:ND1	2.06	0.70
1:A:565:LYS:HD3	1:A:567:GLU:H	1.55	0.70
1:A:631:LEU:HD22	1:A:641:PHE:CE2	2.27	0.69
1:A:625:CYS:C	1:A:630:CYS:SG	2.72	0.67
1:A:343:THR:HA	1:A:606:HIS:CE1	2.32	0.65
1:A:428:ARG:HD2	8:A:731:HOH:O	1.97	0.64
1:A:430:THR:HB	1:A:594:ASN:ND2	2.16	0.60
1:A:634:SER:O	1:A:637:LYS:HD3	2.05	0.57
1:A:420:HIS:HB3	1:A:428:ARG:HG3	1.87	0.56
1:A:573:CYS:SG	1:A:577:THR:HG22	2.47	0.55
1:A:342:TYR:O	1:A:606:HIS:CE1	2.60	0.54
1:A:460:ALA:HB3	1:A:463:ARG:HD3	1.89	0.54
1:A:567:GLU:HG2	8:A:833:HOH:O	2.08	0.54
1:A:577:THR:HG21	1:A:579:LYS:NZ	2.23	0.54
1:A:414:ASN:HD21	1:A:430:THR:HA	1.74	0.52
1:A:342:TYR:C	1:A:344:ARG:H	2.12	0.52
1:A:635:GLU:O	1:A:636:THR:HG22	2.10	0.52

Continued on next page...

Continued from previous page...

Atom-1	Atom-2	Interatomic distance (Å)	Clash overlap (Å)
1:A:665:TYR:CZ	1:A:669:ILE:HD11	2.46	0.51
1:A:577:THR:HG23	1:A:578:ARG:N	2.28	0.49
1:A:419:LYS:HE2	1:A:420:HIS:CE1	2.48	0.49
1:A:577:THR:HG21	1:A:579:LYS:HZ3	1.78	0.48
1:A:665:TYR:CE2	1:A:669:ILE:HD11	2.48	0.48
1:A:653:GLY:O	1:A:654:ARG:C	2.52	0.48
1:A:504:LEU:HG	1:A:537:VAL:HG12	1.96	0.48
1:A:513:ASP:O	1:A:516:VAL:HG22	2.14	0.48
1:A:616:ALA:O	1:A:622:GLY:HA2	2.14	0.47
1:A:441:LYS:HE3	1:A:570:ARG:NH2	2.30	0.47
1:A:625:CYS:O	1:A:630:CYS:SG	2.73	0.47
1:A:440:LYS:HE3	1:A:534:ALA:HA	1.97	0.46
1:A:565:LYS:HD2	1:A:567:GLU:HB2	1.97	0.46
1:A:513:ASP:OD2	1:A:520:LYS:HD3	2.16	0.45
1:A:546:ASP:HA	2:A:689:NAG:O6	2.17	0.45
1:A:385:LEU:HD21	1:A:405:CYS:HB3	1.98	0.45
1:A:549:TRP:HB3	2:A:690:NAG:C8	2.47	0.45
2:A:687:NAG:H61	2:A:688:NAG:C8	2.47	0.45
1:A:352:PRO:HG2	1:A:520:LYS:HD2	1.99	0.45
1:A:464:THR:HG21	1:A:592:ALA:HB1	1.98	0.44
1:A:565:LYS:CD	1:A:567:GLU:H	2.26	0.43
1:A:455:LYS:HB3	1:A:504:LEU:HD21	1.99	0.43
1:A:663:THR:O	1:A:667:THR:HG23	2.18	0.43
1:A:461:VAL:O	1:A:462:ASP:HB2	2.19	0.43
1:A:625:CYS:HB3	1:A:626:PRO:HD3	2.01	0.42
1:A:414:ASN:ND2	8:A:772:HOH:O	2.52	0.42
1:A:396:GLY:HA2	1:A:399:ILE:HD12	2.01	0.42
1:A:381:ILE:HD12	1:A:402:ALA:HB2	2.00	0.42
1:A:414:ASN:HD22	1:A:414:ASN:HA	1.57	0.42
1:A:451:LEU:HA	1:A:451:LEU:HD23	1.89	0.42
1:A:469:ILE:N	1:A:470:PRO:HD2	2.35	0.41
1:A:577:THR:CG2	1:A:578:ARG:N	2.84	0.41
1:A:671:ASN:O	1:A:674:LYS:HG2	2.20	0.41
1:A:471:MET:HE1	1:A:487:PHE:HE2	1.85	0.41
1:A:496:ASP:HA	1:A:497:PRO:HD3	1.98	0.40
1:A:613:HIS:HD2	8:A:802:HOH:O	2.03	0.40
1:A:654:ARG:HH11	1:A:654:ARG:HD3	1.68	0.40

There are no symmetry-related clashes.

5.3 Torsion angles [i](#)

5.3.1 Protein backbone [i](#)

In the following table, the Percentiles column shows the percent Ramachandran outliers of the chain as a percentile score with respect to all X-ray entries followed by that with respect to entries of similar resolution.

The Analysed column shows the number of residues for which the backbone conformation was analysed, and the total number of residues.

Mol	Chain	Analysed	Favoured	Allowed	Outliers	Percentiles	
1	A	337/345 (98%)	313 (93%)	21 (6%)	3 (1%)	21	42

All (3) Ramachandran outliers are listed below:

Mol	Chain	Res	Type
1	A	685	ALA
1	A	625	CYS
1	A	634	SER

5.3.2 Protein sidechains [i](#)

In the following table, the Percentiles column shows the percent sidechain outliers of the chain as a percentile score with respect to all X-ray entries followed by that with respect to entries of similar resolution.

The Analysed column shows the number of residues for which the sidechain conformation was analysed, and the total number of residues.

Mol	Chain	Analysed	Rotameric	Outliers	Percentiles	
1	A	282/286 (99%)	261 (93%)	21 (7%)	17	34

All (21) residues with a non-rotameric sidechain are listed below:

Mol	Chain	Res	Type
1	A	356	LYS
1	A	380	CYS
1	A	395	ASP
1	A	414	ASN
1	A	416	LYS
1	A	418	SER
1	A	419	LYS
1	A	427	LEU

Continued on next page...

Continued from previous page...

Mol	Chain	Res	Type
1	A	500	ARG
1	A	504	LEU
1	A	515	CYS
1	A	559	ASP
1	A	577	THR
1	A	583	GLU
1	A	591	VAL
1	A	611	LEU
1	A	627	ASP
1	A	633	LYS
1	A	635	GLU
1	A	636	THR
1	A	637	LYS

Some sidechains can be flipped to improve hydrogen bonding and reduce clashes. All (4) such sidechains are listed below:

Mol	Chain	Res	Type
1	A	360	GLN
1	A	414	ASN
1	A	585	GLN
1	A	638	ASN

5.3.3 RNA ⓘ

There are no RNA molecules in this entry.

5.4 Non-standard residues in protein, DNA, RNA chains ⓘ

There are no non-standard protein/DNA/RNA residues in this entry.

5.5 Carbohydrates ⓘ

6 carbohydrates are modelled in this entry.

In the following table, the Counts columns list the number of bonds (or angles) for which Mogul statistics could be retrieved, the number of bonds (or angles) that are observed in the model and the number of bonds (or angles) that are defined in the chemical component dictionary. The Link column lists molecule types, if any, to which the group is linked. The Z score for a bond length (or angle) is the number of standard deviations the observed value is removed from the expected

value. A bond length (or angle) with $|Z| > 2$ is considered an outlier worth inspection. RMSZ is the root-mean-square of all Z scores of the bond lengths (or angles).

Mol	Type	Chain	Res	Link	Bond lengths			Bond angles		
					Counts	RMSZ	$\# Z > 2$	Counts	RMSZ	$\# Z > 2$
2	NAG	A	1	1,2	14,14,15	1.55	2 (14%)	15,19,21	2.03	6 (40%)
2	NAG	A	2	2	14,14,15	1.58	3 (21%)	15,19,21	2.34	6 (40%)
2	NAG	A	687	1,2	14,14,15	0.60	0	15,19,21	1.02	1 (6%)
2	NAG	A	688	2	14,14,15	0.66	0	15,19,21	0.84	0
2	NAG	A	689	1,2	14,14,15	1.60	3 (21%)	15,19,21	2.36	6 (40%)
2	NAG	A	690	2	14,14,15	0.50	0	15,19,21	0.59	0

In the following table, the Chirals column lists the number of chiral outliers, the number of chiral centers analysed, the number of these observed in the model and the number defined in the chemical component dictionary. Similar counts are reported in the Torsion and Rings columns. '-' means no outliers of that kind were identified.

Mol	Type	Chain	Res	Link	Chirals	Torsions	Rings
2	NAG	A	1	1,2	-	0/6/23/26	0/1/1/1
2	NAG	A	2	2	-	0/6/23/26	0/1/1/1
2	NAG	A	687	1,2	-	0/6/23/26	0/1/1/1
2	NAG	A	688	2	-	0/6/23/26	0/1/1/1
2	NAG	A	689	1,2	-	0/6/23/26	0/1/1/1
2	NAG	A	690	2	-	0/6/23/26	0/1/1/1

All (8) bond length outliers are listed below:

Mol	Chain	Res	Type	Atoms	Z	Observed(Å)	Ideal(Å)
2	A	1	NAG	O4-C4	-3.70	1.34	1.43
2	A	689	NAG	O7-C7	-3.01	1.16	1.23
2	A	2	NAG	O7-C7	-2.99	1.16	1.23
2	A	1	NAG	C3-C2	-2.39	1.46	1.52
2	A	689	NAG	C4-C5	2.08	1.57	1.53
2	A	2	NAG	C4-C5	2.14	1.57	1.53
2	A	2	NAG	C1-C2	3.67	1.57	1.52
2	A	689	NAG	C1-C2	3.74	1.57	1.52

All (19) bond angle outliers are listed below:

Mol	Chain	Res	Type	Atoms	Z	Observed(°)	Ideal(°)
2	A	1	NAG	O4-C4-C3	-5.06	98.94	110.34
2	A	689	NAG	C4-C3-C2	-3.85	105.25	111.23
2	A	2	NAG	C4-C3-C2	-3.83	105.27	111.23

Continued on next page...

Continued from previous page...

Mol	Chain	Res	Type	Atoms	Z	Observed(°)	Ideal(°)
2	A	1	NAG	C1-O5-C5	-2.42	109.17	112.25
2	A	1	NAG	C4-C3-C2	-2.42	107.47	111.23
2	A	1	NAG	O4-C4-C5	-2.33	103.07	109.24
2	A	689	NAG	O4-C4-C3	-2.20	105.39	110.34
2	A	2	NAG	O4-C4-C3	-2.16	105.47	110.34
2	A	1	NAG	C2-N2-C7	-2.00	120.47	123.04
2	A	687	NAG	C3-C4-C5	2.20	114.04	110.20
2	A	2	NAG	O7-C7-N2	2.41	126.77	121.86
2	A	689	NAG	O7-C7-N2	2.42	126.79	121.86
2	A	1	NAG	C3-C4-C5	2.55	114.64	110.20
2	A	689	NAG	C1-O5-C5	2.63	115.59	112.25
2	A	2	NAG	C1-O5-C5	2.63	115.59	112.25
2	A	2	NAG	O3-C3-C2	3.86	116.77	109.11
2	A	689	NAG	O3-C3-C2	3.87	116.78	109.11
2	A	2	NAG	C2-N2-C7	5.19	129.71	123.04
2	A	689	NAG	C2-N2-C7	5.22	129.75	123.04

There are no chirality outliers.

There are no torsion outliers.

There are no ring outliers.

4 monomers are involved in 8 short contacts:

Mol	Chain	Res	Type	Clashes	Symm-Clashes
2	A	687	NAG	3	0
2	A	688	NAG	3	0
2	A	689	NAG	4	0
2	A	690	NAG	1	0

5.6 Ligand geometry

Of 6 ligands modelled in this entry, 3 are monoatomic - leaving 3 for Mogul analysis.

In the following table, the Counts columns list the number of bonds (or angles) for which Mogul statistics could be retrieved, the number of bonds (or angles) that are observed in the model and the number of bonds (or angles) that are defined in the chemical component dictionary. The Link column lists molecule types, if any, to which the group is linked. The Z score for a bond length (or angle) is the number of standard deviations the observed value is removed from the expected value. A bond length (or angle) with $|Z| > 2$ is considered an outlier worth inspection. RMSZ is the root-mean-square of all Z scores of the bond lengths (or angles).

Mol	Type	Chain	Res	Link	Bond lengths			Bond angles		
					Counts	RMSZ	# Z > 2	Counts	RMSZ	# Z > 2
6	SO4	A	5	-	4,4,4	0.18	0	6,6,6	0.14	0
4	CO3	A	692	3	0,3,3	0.00	-	0,3,3	0.00	-
7	COU	A	693	-	11,12,12	2.39	6 (54%)	9,16,16	1.51	2 (22%)

In the following table, the Chirals column lists the number of chiral outliers, the number of chiral centers analysed, the number of these observed in the model and the number defined in the chemical component dictionary. Similar counts are reported in the Torsion and Rings columns. '-' means no outliers of that kind were identified.

Mol	Type	Chain	Res	Link	Chirals	Torsions	Rings
6	SO4	A	5	-	-	0/0/0/0	0/0/0/0
4	CO3	A	692	3	-	0/0/0/0	0/0/0/0
7	COU	A	693	-	-	0/0/0/0	0/2/2/2

All (6) bond length outliers are listed below:

Mol	Chain	Res	Type	Atoms	Z	Observed(Å)	Ideal(Å)
7	A	693	COU	C7-C6	2.13	1.43	1.38
7	A	693	COU	C7-C8	2.14	1.41	1.36
7	A	693	COU	C8-C9	2.22	1.42	1.38
7	A	693	COU	C4-C9	3.30	1.45	1.41
7	A	693	COU	C3-C4	3.57	1.50	1.41
7	A	693	COU	C2-C1	4.15	1.45	1.37

All (2) bond angle outliers are listed below:

Mol	Chain	Res	Type	Atoms	Z	Observed(°)	Ideal(°)
7	A	693	COU	C8-C9-C4	-2.99	119.99	123.14
7	A	693	COU	O2-C9-C8	3.17	120.03	116.10

There are no chirality outliers.

There are no torsion outliers.

There are no ring outliers.

No monomer is involved in short contacts.

5.7 Other polymers

There are no such residues in this entry.

5.8 Polymer linkage issues ⓘ

There are no chain breaks in this entry.

6 Fit of model and data [i](#)

6.1 Protein, DNA and RNA chains [i](#)

In the following table, the column labelled ‘#RSRZ> 2’ contains the number (and percentage) of RSRZ outliers, followed by percent RSRZ outliers for the chain as percentile scores relative to all X-ray entries and entries of similar resolution. The OWAB column contains the minimum, median, 95th percentile and maximum values of the occupancy-weighted average B-factor per residue. The column labelled ‘Q< 0.9’ lists the number of (and percentage) of residues with an average occupancy less than 0.9.

Mol	Chain	Analysed	<RSRZ>	#RSRZ>2	OWAB(Å ²)	Q<0.9
1	A	341/345 (98%)	-0.27	15 (4%) 38 30	13, 29, 54, 78	2 (0%)

All (15) RSRZ outliers are listed below:

Mol	Chain	Res	Type	RSRZ
1	A	421	SER	5.6
1	A	682	GLU	5.5
1	A	342	TYR	5.0
1	A	681	LEU	5.0
1	A	420	HIS	4.9
1	A	683	ALA	4.4
1	A	419	LYS	3.7
1	A	422	SER	3.5
1	A	685	ALA	3.2
1	A	418	SER	3.2
1	A	625	CYS	2.4
1	A	423	LEU	2.3
1	A	635	GLU	2.2
1	A	636	THR	2.2
1	A	676	SER	2.1

6.2 Non-standard residues in protein, DNA, RNA chains [i](#)

There are no non-standard protein/DNA/RNA residues in this entry.

6.3 Carbohydrates [i](#)

In the following table, the Atoms column lists the number of modelled atoms in the group and the number defined in the chemical component dictionary. LLDF column lists the quality of electron density of the group with respect to its neighbouring residues in protein, DNA or RNA chains. The B-factors column lists the minimum, median, 95th percentile and maximum values of B factors

of atoms in the group. The column labelled 'Q< 0.9' lists the number of atoms with occupancy less than 0.9.

Mol	Type	Chain	Res	Atoms	RSCC	RSR	LLDF	B-factors(\AA^2)	Q<0.9
2	NAG	A	687	14/15	0.73	0.27	6.56	54,57,60,63	0
2	NAG	A	689	14/15	0.79	0.28	2.73	20,20,20,20	0
2	NAG	A	1	14/15	0.85	0.18	0.32	49,55,57,60	0
2	NAG	A	690	14/15	0.78	0.23	-0.07	60,61,64,67	0
2	NAG	A	2	14/15	0.57	0.47	-	20,20,20,20	0
2	NAG	A	688	14/15	0.77	0.41	-	76,77,78,80	0

6.4 Ligands [i](#)

In the following table, the Atoms column lists the number of modelled atoms in the group and the number defined in the chemical component dictionary. LLDF column lists the quality of electron density of the group with respect to its neighbouring residues in protein, DNA or RNA chains. The B-factors column lists the minimum, median, 95th percentile and maximum values of B factors of atoms in the group. The column labelled 'Q< 0.9' lists the number of atoms with occupancy less than 0.9.

Mol	Type	Chain	Res	Atoms	RSCC	RSR	LLDF	B-factors(\AA^2)	Q<0.9
4	CO3	A	692	4/4	0.98	0.11	-1.06	20,21,22,22	0
3	FE	A	691	1/1	0.97	0.08	-2.09	27,27,27,27	0
5	ZN	A	3	1/1	0.96	0.04	-2.19	36,36,36,36	0
5	ZN	A	4	1/1	0.97	0.05	-	41,41,41,41	0
7	COU	A	693	11/11	0.79	0.81	-	56,56,57,57	0
6	SO4	A	5	5/5	0.85	0.33	-	33,33,34,34	5

6.5 Other polymers [i](#)

There are no such residues in this entry.