



Full wwPDB X-ray Structure Validation Report ⓘ

Jan 31, 2016 – 06:50 PM GMT

PDB ID : 1CSI
Title : A very short hydrogen bond provides only moderate stabilization of an enzyme:
inhibitor complex of citrate synthase
Authors : Usher, K.C.; Remington, S.J.
Deposited on : 1994-03-07
Resolution : 1.70 Å(reported)

This is a Full wwPDB X-ray Structure Validation Report for a publicly released PDB entry.
We welcome your comments at validation@mail.wwpdb.org
A user guide is available at
<http://wwpdb.org/validation/2016/XrayValidationReportHelp>
with specific help available everywhere you see the ⓘ symbol.

The following versions of software and data (see [references ⓘ](#)) were used in the production of this report:

MolProbity : 4.02b-467
Mogul : 1.7 (RC4), CSD as536be (2015)
Xtriage (Phenix) : **NOT EXECUTED**
EDS : **NOT EXECUTED**
Percentile statistics : 20151230.v01 (using entries in the PDB archive December 30th 2015)
Ideal geometry (proteins) : Engh & Huber (2001)
Ideal geometry (DNA, RNA) : Parkinson et al. (1996)
Validation Pipeline (wwPDB-VP) : trunk26865

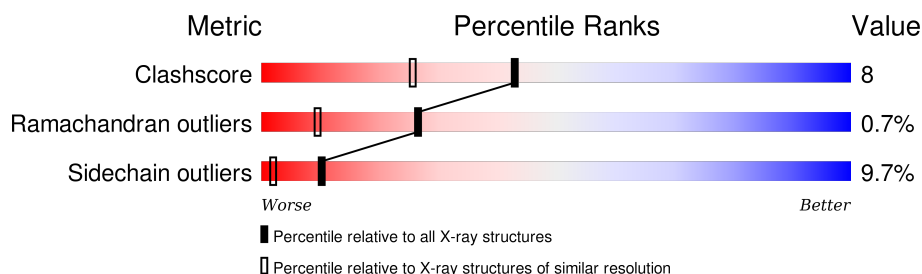
1 Overall quality at a glance

The following experimental techniques were used to determine the structure:

X-RAY DIFFRACTION

The reported resolution of this entry is 1.70 Å.

Percentile scores (ranging between 0-100) for global validation metrics of the entry are shown in the following graphic. The table shows the number of entries on which the scores are based.



Metric	Whole archive (#Entries)	Similar resolution (#Entries, resolution range(Å))
Clashscore	102246	3585 (1.70-1.70)
Ramachandran outliers	100387	3527 (1.70-1.70)
Sidechain outliers	100360	3527 (1.70-1.70)

The table below summarises the geometric issues observed across the polymeric chains and their fit to the electron density. The red, orange, yellow and green segments on the lower bar indicate the fraction of residues that contain outliers for ≥ 3 , 2, 1 and 0 types of geometric quality criteria. A grey segment represents the fraction of residues that are not modelled. The numeric value for each fraction is indicated below the corresponding segment, with a dot representing fractions $\leq 5\%$. The upper red bar (where present) indicates the fraction of residues that have poor fit to the electron density. The numeric value is given above the bar.

Note EDS was not executed.

Mol	Chain	Length	Quality of chain
1	A	435	 71% 22% 6%

2 Entry composition

There are 4 unique types of molecules in this entry. The entry contains 3594 atoms, of which 0 are hydrogens and 0 are deuteriums.

In the tables below, the ZeroOcc column contains the number of atoms modelled with zero occupancy, the AltConf column contains the number of residues with at least one atom in alternate conformation and the Trace column contains the number of residues modelled with at most 2 atoms.

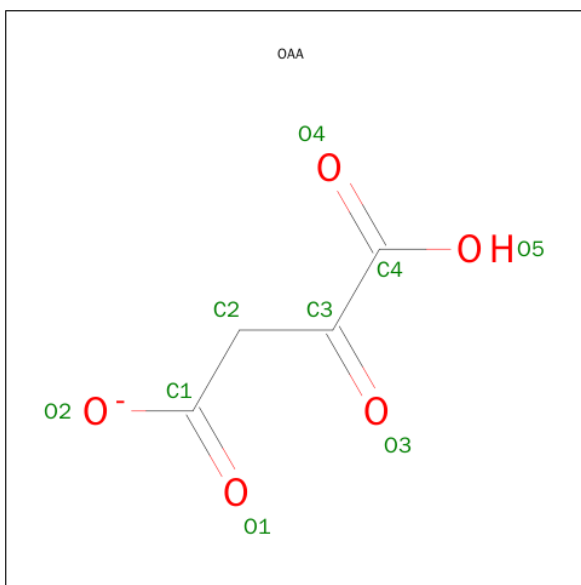
- Molecule 1 is a protein called CITRATE SYNTHASE.

Mol	Chain	Residues	Atoms					ZeroOcc	AltConf	Trace
1	A	435	Total	C	N	O	S	0	0	0
			3391	2167	583	625	16			

There are 25 discrepancies between the modelled and reference sequences:

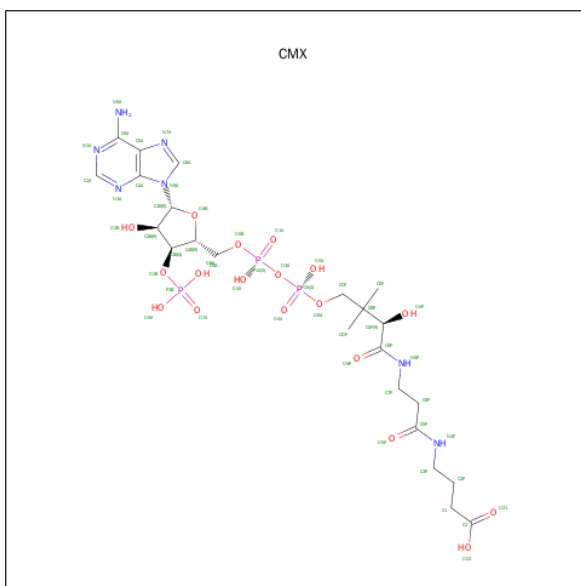
Chain	Residue	Modelled	Actual	Comment	Reference
A	9	VAL	ILE	CONFLICT	UNP P23007
A	12	SER	ASP	CONFLICT	UNP P23007
A	32	ALA	VAL	CONFLICT	UNP P23007
A	41	SER	MET	CONFLICT	UNP P23007
A	52	ILE	VAL	CONFLICT	UNP P23007
A	69	PHE	TYR	CONFLICT	UNP P23007
A	77	LEU	MET	CONFLICT	UNP P23007
A	82	GLY	LYS	CONFLICT	UNP P23007
A	104	PRO	GLU	CONFLICT	UNP P23007
A	110	VAL	LEU	CONFLICT	UNP P23007
A	163	ASN	HIS	CONFLICT	UNP P23007
A	170	PHE	LEU	CONFLICT	UNP P23007
A	171	VAL	ILE	CONFLICT	UNP P23007
A	175	ALA	CYS	CONFLICT	UNP P23007
A	196	ALA	GLU	CONFLICT	UNP P23007
A	222	PRO	ALA	CONFLICT	UNP P23007
A	283	LEU	VAL	CONFLICT	UNP P23007
A	286	SER	THR	CONFLICT	UNP P23007
A	291	ASP	GLU	CONFLICT	UNP P23007
A	292	LEU	VAL	CONFLICT	UNP P23007
A	294	ALA	LYS	CONFLICT	UNP P23007
A	296	ALA	VAL	CONFLICT	UNP P23007
A	343	SER	HIS	CONFLICT	UNP P23007
A	428	ALA	ASP	CONFLICT	UNP P23007
A	431	GLU	ILE	CONFLICT	UNP P23007

- Molecule 2 is OXALOACETATE ION (three-letter code: OAA) (formula: C₄H₃O₅).



Mol	Chain	Residues	Atoms			ZeroOcc	AltConf
2	A	1	Total	C	O	0	0
			9	4	5		

- Molecule 3 is CARBOXYMETHYLDETHIA COENZYME *A (three-letter code: CMX) (formula: $C_{23}H_{38}N_7O_{18}P_3$).



Mol	Chain	Residues	Atoms					ZeroOcc	AltConf
3	A	1	Total	C	N	O	P	0	0
			51	23	7	18	3		

- Molecule 4 is water.

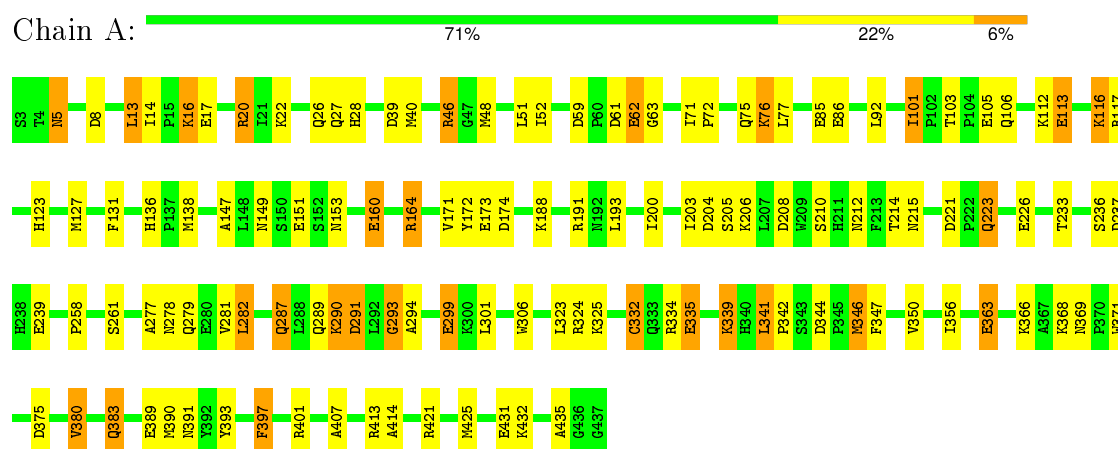
Mol	Chain	Residues	Atoms		ZeroOcc	AltConf
4	A	143	Total 143	O 143	0	0

3 Residue-property plots

These plots are drawn for all protein, RNA and DNA chains in the entry. The first graphic for a chain summarises the proportions of errors displayed in the second graphic. The second graphic shows the sequence view annotated by issues in geometry and electron density. Residues are color-coded according to the number of geometric quality criteria for which they contain at least one outlier: green = 0, yellow = 1, orange = 2 and red = 3 or more. A red dot above a residue indicates a poor fit to the electron density ($RSRZ > 2$). Stretches of 2 or more consecutive residues without any outlier are shown as a green connector. Residues present in the sample, but not in the model, are shown in grey.

Note EDS was not executed.

• Molecule 1: CITRATE SYNTHASE



4 Data and refinement statistics

Xtriage (Phenix) and EDS were not executed - this section will therefore be incomplete.

Property	Value	Source
Space group	C 1 2 1	Depositor
Cell constants a, b, c, α , β , γ	104.40 Å 78.50 Å 58.50 Å 90.00° 78.90° 90.00°	Depositor
Resolution (Å)	25.00 – 1.70	Depositor
% Data completeness (in resolution range)	(Not available) (25.00-1.70)	Depositor
R_{merge}	(Not available)	Depositor
R_{sym}	(Not available)	Depositor
Refinement program	TNT	Depositor
R, R_{free}	0.156 , (Not available)	Depositor
Estimated twinning fraction	No twinning to report.	Xtriage
Total number of atoms	3594	wwPDB-VP
Average B, all atoms (Å ²)	16.0	wwPDB-VP

5 Model quality

5.1 Standard geometry

Bond lengths and bond angles in the following residue types are not validated in this section: OAA, CMX

The Z score for a bond length (or angle) is the number of standard deviations the observed value is removed from the expected value. A bond length (or angle) with $|Z| > 5$ is considered an outlier worth inspection. RMSZ is the root-mean-square of all Z scores of the bond lengths (or angles).

Mol	Chain	Bond lengths		Bond angles	
		RMSZ	$\# Z > 5$	RMSZ	$\# Z > 5$
1	A	0.96	17/3476 (0.5%)	1.41	36/4721 (0.8%)

All (17) bond length outliers are listed below:

Mol	Chain	Res	Type	Atoms	Z	Observed(Å)	Ideal(Å)
1	A	239	GLU	CD-OE1	8.55	1.35	1.25
1	A	105	GLU	CD-OE1	7.14	1.33	1.25
1	A	226	GLU	CD-OE2	6.99	1.33	1.25
1	A	335	GLU	CD-OE1	6.94	1.33	1.25
1	A	431	GLU	CD-OE1	-6.87	1.18	1.25
1	A	160	GLU	CD-OE1	6.63	1.32	1.25
1	A	62	GLU	CD-OE1	6.51	1.32	1.25
1	A	17	GLU	CD-OE1	6.48	1.32	1.25
1	A	151	GLU	CD-OE1	6.13	1.32	1.25
1	A	431	GLU	CD-OE2	6.08	1.32	1.25
1	A	299	GLU	CD-OE2	6.07	1.32	1.25
1	A	173	GLU	CD-OE1	6.04	1.32	1.25
1	A	113	GLU	CD-OE2	6.00	1.32	1.25
1	A	363	GLU	CD-OE2	5.86	1.32	1.25
1	A	85	GLU	CD-OE2	5.32	1.31	1.25
1	A	86	GLU	CD-OE1	5.28	1.31	1.25
1	A	389	GLU	CD-OE1	5.16	1.31	1.25

All (36) bond angle outliers are listed below:

Mol	Chain	Res	Type	Atoms	Z	Observed(°)	Ideal(°)
1	A	46	ARG	NE-CZ-NH2	9.96	125.28	120.30
1	A	39	ASP	CB-CG-OD2	-9.79	109.49	118.30
1	A	51	LEU	CB-CA-C	-9.03	93.05	110.20
1	A	39	ASP	CB-CG-OD1	8.47	125.92	118.30

Continued on next page...

Continued from previous page...

Mol	Chain	Res	Type	Atoms	Z	Observed(°)	Ideal(°)
1	A	344	ASP	CB-CG-OD1	-7.65	111.42	118.30
1	A	393	TYR	CB-CG-CD2	-7.48	116.51	121.00
1	A	46	ARG	NE-CZ-NH1	-7.40	116.60	120.30
1	A	237	ASP	CB-CG-OD2	-7.37	111.67	118.30
1	A	61	ASP	CB-CG-OD1	-7.16	111.85	118.30
1	A	334	ARG	NE-CZ-NH1	7.13	123.86	120.30
1	A	380	VAL	CA-CB-CG2	-7.03	100.36	110.90
1	A	13	LEU	CD1-CG-CD2	-6.85	89.95	110.50
1	A	380	VAL	CG1-CB-CG2	-6.83	99.97	110.90
1	A	221	ASP	CB-CG-OD1	-6.39	112.55	118.30
1	A	8	ASP	CB-CG-OD1	-6.12	112.79	118.30
1	A	20	ARG	NE-CZ-NH1	6.00	123.30	120.30
1	A	397	PHE	CB-CG-CD1	5.69	124.78	120.80
1	A	344	ASP	CB-CG-OD2	5.56	123.30	118.30
1	A	172	TYR	CB-CG-CD2	-5.55	117.67	121.00
1	A	208	ASP	CB-CG-OD1	-5.48	113.37	118.30
1	A	164	ARG	NE-CZ-NH1	5.47	123.03	120.30
1	A	59	ASP	CB-CG-OD1	-5.31	113.53	118.30
1	A	61	ASP	CB-CG-OD2	5.23	123.01	118.30
1	A	407	ALA	CB-CA-C	5.23	117.94	110.10
1	A	401	ARG	NE-CZ-NH1	5.21	122.90	120.30
1	A	131	PHE	CB-CG-CD2	-5.20	117.16	120.80
1	A	172	TYR	CB-CG-CD1	5.18	124.11	121.00
1	A	383	GLN	CA-CB-CG	5.18	124.79	113.40
1	A	174	ASP	CB-CG-OD1	-5.16	113.66	118.30
1	A	117	ARG	NE-CZ-NH2	-5.13	117.73	120.30
1	A	239	GLU	CB-CA-C	5.13	120.66	110.40
1	A	332	CYS	CB-CA-C	5.11	120.62	110.40
1	A	28	HIS	N-CA-CB	-5.09	101.44	110.60
1	A	164	ARG	NE-CZ-NH2	-5.09	117.76	120.30
1	A	291	ASP	CB-CG-OD2	5.06	122.86	118.30
1	A	339	LYS	N-CA-CB	5.06	119.70	110.60

There are no chirality outliers.

There are no planarity outliers.

5.2 Too-close contacts

In the following table, the Non-H and H(model) columns list the number of non-hydrogen atoms and hydrogen atoms in the chain respectively. The H(added) column lists the number of hydrogen atoms added and optimized by MolProbity. The Clashes column lists the number of clashes within the asymmetric unit, whereas Symm-Clashes lists symmetry related clashes.

Mol	Chain	Non-H	H(model)	H(added)	Clashes	Symm-Clashes
1	A	3391	0	3370	56	0
2	A	9	0	2	0	0
3	A	51	0	33	3	0
4	A	143	0	0	1	0
All	All	3594	0	3405	56	0

The all-atom clashscore is defined as the number of clashes found per 1000 atoms (including hydrogen atoms). The all-atom clashscore for this structure is 8.

All (56) close contacts within the same asymmetric unit are listed below, sorted by their clash magnitude.

Atom-1	Atom-2	Interatomic distance (Å)	Clash overlap (Å)
1:A:136:HIS:HD2	1:A:138:MET:H	1.28	0.82
1:A:346:MET:HG2	1:A:380:VAL:HG22	1.68	0.76
1:A:112:LYS:O	1:A:116:LYS:HG3	1.95	0.66
1:A:92:LEU:HD21	1:A:236:SER:OG	1.96	0.66
1:A:339:LYS:N	1:A:339:LYS:HD3	2.13	0.64
1:A:136:HIS:CD2	1:A:138:MET:H	2.14	0.63
1:A:299:GLU:CD	1:A:299:GLU:H	2.02	0.63
1:A:171:VAL:HG21	1:A:413:ARG:HG3	1.83	0.59
1:A:77:LEU:HB3	1:A:101:ILE:HD12	1.85	0.59
1:A:301:LEU:HD12	1:A:356:ILE:HD12	1.84	0.58
1:A:103:THR:H	1:A:106:GLN:HE21	1.52	0.57
1:A:223:GLN:OE1	1:A:223:GLN:HA	1.99	0.57
1:A:335:GLU:O	1:A:339:LYS:HE2	2.06	0.56
1:A:306:TRP:CZ2	1:A:363:GLU:OE2	2.58	0.56
1:A:210:SER:O	1:A:214:THR:HG23	2.06	0.56
1:A:103:THR:H	1:A:106:GLN:NE2	2.04	0.56
1:A:366:LYS:HE3	3:A:700:CMX:O8A	2.06	0.56
1:A:301:LEU:HD12	1:A:356:ILE:CD1	2.37	0.55
1:A:289:GLN:O	1:A:293:GLY:HA2	2.08	0.53
1:A:350:VAL:HG21	1:A:380:VAL:HG21	1.91	0.53
1:A:215:ASN:ND2	4:A:581:HOH:O	2.42	0.52
1:A:341:LEU:N	1:A:342:PRO:HD3	2.24	0.52
1:A:306:TRP:HZ2	1:A:363:GLU:OE2	1.93	0.50
1:A:301:LEU:CD1	1:A:356:ILE:HD12	2.40	0.50
1:A:191:ARG:HG3	1:A:200:ILE:HG22	1.93	0.50
1:A:71:ILE:HB	1:A:72:PRO:HD3	1.94	0.49
1:A:258:PRO:HA	1:A:261:SER:OG	2.14	0.47
1:A:341:LEU:N	1:A:342:PRO:CD	2.77	0.47
1:A:324:ARG:C	1:A:325:LYS:HG2	2.34	0.47
1:A:204:ASP:H	1:A:212:ASN:HD21	1.61	0.47

Continued on next page...

Continued from previous page...

Atom-1	Atom-2	Interatomic distance (Å)	Clash overlap (Å)
1:A:346:MET:HG2	1:A:380:VAL:CG2	2.42	0.46
1:A:287:GLN:HA	1:A:290:LYS:HE2	1.99	0.45
1:A:22:LYS:O	1:A:26:GLN:HG3	2.16	0.45
1:A:347:PHE:HA	1:A:380:VAL:HG11	1.99	0.45
1:A:204:ASP:OD1	1:A:206:LYS:HB2	2.18	0.44
1:A:92:LEU:HD22	1:A:233:THR:HG23	2.00	0.44
1:A:63:GLY:HA2	1:A:323:LEU:HD21	2.00	0.43
1:A:136:HIS:HE1	1:A:279:GLN:OE1	2.01	0.43
1:A:339:LYS:HA	1:A:339:LYS:HD3	1.75	0.43
1:A:123:HIS:HE1	1:A:147:ALA:O	2.00	0.43
1:A:369:ASN:OD1	1:A:371:TRP:HD1	2.02	0.43
1:A:16:LYS:H	1:A:16:LYS:HG2	1.29	0.43
1:A:14:ILE:HG12	1:A:414:ALA:HB1	2.01	0.42
1:A:52:ILE:HD13	1:A:52:ILE:HA	1.86	0.42
1:A:76:LYS:HB2	1:A:76:LYS:HE3	1.39	0.42
1:A:277:ALA:O	1:A:281:VAL:HG23	2.19	0.42
1:A:375:ASP:OD2	3:A:700:CMX:O22	2.38	0.42
1:A:282:LEU:HA	1:A:282:LEU:HD13	1.70	0.42
1:A:112:LYS:HB2	1:A:112:LYS:HE2	1.73	0.41
1:A:113:GLU:OE1	1:A:116:LYS:HE2	2.20	0.41
1:A:206:LYS:HD3	1:A:206:LYS:HA	1.60	0.41
1:A:391:ASN:HD22	1:A:391:ASN:N	2.16	0.41
1:A:40:MET:SD	1:A:48:MET:HG2	2.61	0.41
1:A:153:ASN:N	1:A:153:ASN:ND2	2.69	0.41
1:A:366:LYS:HE2	3:A:700:CMX:O3B	2.21	0.41
1:A:5:ASN:C	1:A:5:ASN:HD22	2.25	0.40

There are no symmetry-related clashes.

5.3 Torsion angles [i](#)

5.3.1 Protein backbone [i](#)

In the following table, the Percentiles column shows the percent Ramachandran outliers of the chain as a percentile score with respect to all X-ray entries followed by that with respect to entries of similar resolution.

The Analysed column shows the number of residues for which the backbone conformation was analysed, and the total number of residues.

Mol	Chain	Analysed	Favoured	Allowed	Outliers	Percentiles
1	A	433/435 (100%)	421 (97%)	9 (2%)	3 (1%)	26 9

All (3) Ramachandran outliers are listed below:

Mol	Chain	Res	Type
1	A	294	ALA
1	A	435	ALA
1	A	293	GLY

5.3.2 Protein sidechains ⓘ

In the following table, the Percentiles column shows the percent sidechain outliers of the chain as a percentile score with respect to all X-ray entries followed by that with respect to entries of similar resolution.

The Analysed column shows the number of residues for which the sidechain conformation was analysed, and the total number of residues.

Mol	Chain	Analysed	Rotameric	Outliers	Percentiles
1	A	361/361 (100%)	326 (90%)	35 (10%)	10 2

All (35) residues with a non-rotameric sidechain are listed below:

Mol	Chain	Res	Type
1	A	5	ASN
1	A	13	LEU
1	A	16	LYS
1	A	20	ARG
1	A	27	GLN
1	A	46	ARG
1	A	62	GLU
1	A	75	GLN
1	A	76	LYS
1	A	101	ILE
1	A	116	LYS
1	A	127	MET
1	A	149	ASN
1	A	160	GLU
1	A	164	ARG
1	A	188	LYS
1	A	193	LEU
1	A	203	ILE

Continued on next page...

Continued from previous page...

Mol	Chain	Res	Type
1	A	205	SER
1	A	223	GLN
1	A	278	ASN
1	A	282	LEU
1	A	287	GLN
1	A	290	LYS
1	A	291	ASP
1	A	332	CYS
1	A	341	LEU
1	A	346	MET
1	A	368	LYS
1	A	383	GLN
1	A	390	MET
1	A	397	PHE
1	A	421	ARG
1	A	425	MET
1	A	432	LYS

Some sidechains can be flipped to improve hydrogen bonding and reduce clashes. All (18) such sidechains are listed below:

Mol	Chain	Res	Type
1	A	5	ASN
1	A	26	GLN
1	A	106	GLN
1	A	123	HIS
1	A	136	HIS
1	A	140	GLN
1	A	149	ASN
1	A	153	ASN
1	A	192	ASN
1	A	211	HIS
1	A	212	ASN
1	A	215	ASN
1	A	267	ASN
1	A	278	ASN
1	A	289	GLN
1	A	352	GLN
1	A	364	GLN
1	A	391	ASN

5.3.3 RNA ⓘ

There are no RNA molecules in this entry.

5.4 Non-standard residues in protein, DNA, RNA chains ⓘ

There are no non-standard protein/DNA/RNA residues in this entry.

5.5 Carbohydrates ⓘ

There are no carbohydrates in this entry.

5.6 Ligand geometry ⓘ

2 ligands are modelled in this entry.

In the following table, the Counts columns list the number of bonds (or angles) for which Mogul statistics could be retrieved, the number of bonds (or angles) that are observed in the model and the number of bonds (or angles) that are defined in the chemical component dictionary. The Link column lists molecule types, if any, to which the group is linked. The Z score for a bond length (or angle) is the number of standard deviations the observed value is removed from the expected value. A bond length (or angle) with $|Z| > 2$ is considered an outlier worth inspection. RMSZ is the root-mean-square of all Z scores of the bond lengths (or angles).

Mol	Type	Chain	Res	Link	Bond lengths			Bond angles		
					Counts	RMSZ	# $ Z > 2$	Counts	RMSZ	# $ Z > 2$
3	CMX	A	700	-	40,53,53	0.92	1 (2%)	52,79,79	1.46	8 (15%)
2	OAA	A	702	-	2,8,8	0.96	0	2,10,10	1.61	1 (50%)

In the following table, the Chirals column lists the number of chiral outliers, the number of chiral centers analysed, the number of these observed in the model and the number defined in the chemical component dictionary. Similar counts are reported in the Torsion and Rings columns. '-' means no outliers of that kind were identified.

Mol	Type	Chain	Res	Link	Chirals	Torsions	Rings
3	CMX	A	700	-	-	0/45/67/67	0/3/3/3
2	OAA	A	702	-	-	0/2/8/8	0/0/0/0

All (1) bond length outliers are listed below:

Mol	Chain	Res	Type	Atoms	Z	Observed(Å)	Ideal(Å)
3	A	700	CMX	O4B-C1B	2.01	1.43	1.41

All (9) bond angle outliers are listed below:

Mol	Chain	Res	Type	Atoms	Z	Observed(°)	Ideal(°)
3	A	700	CMX	C2B-C1B-N9A	-5.48	105.92	114.29
3	A	700	CMX	P2A-O3A-P1A	-3.76	122.17	132.73
3	A	700	CMX	O3A-P2A-O6A	-2.86	95.34	102.94
3	A	700	CMX	CEP-CBP-CCP	-2.03	105.87	108.50
2	A	702	OAA	O3-C3-C2	2.00	124.40	120.74
3	A	700	CMX	O8A-P3B-O7A	2.03	117.10	110.58
3	A	700	CMX	O4B-C1B-N9A	2.07	112.44	108.10
3	A	700	CMX	CDP-CBP-CAP	2.10	113.17	109.34
3	A	700	CMX	C1B-N9A-C4A	3.30	131.91	126.94

There are no chirality outliers.

There are no torsion outliers.

There are no ring outliers.

1 monomer is involved in 3 short contacts:

Mol	Chain	Res	Type	Clashes	Symm-Clashes
3	A	700	CMX	3	0

5.7 Other polymers [i](#)

There are no such residues in this entry.

5.8 Polymer linkage issues [i](#)

There are no chain breaks in this entry.

6 Fit of model and data [i](#)

6.1 Protein, DNA and RNA chains [i](#)

EDS was not executed - this section will therefore be empty.

6.2 Non-standard residues in protein, DNA, RNA chains [i](#)

EDS was not executed - this section will therefore be empty.

6.3 Carbohydrates [i](#)

EDS was not executed - this section will therefore be empty.

6.4 Ligands [i](#)

EDS was not executed - this section will therefore be empty.

6.5 Other polymers [i](#)

EDS was not executed - this section will therefore be empty.