



Full wwPDB X-ray Structure Validation Report ⓘ

Feb 1, 2016 – 03:37 PM GMT

PDB ID : 4CTW
Title : Structure of rat neuronal nitric oxide synthase heme domain in complex with (R)-6-(3-amino-2-(5-(2-(6-amino-4-methylpyridin-2-yl) ethyl)pyridin-3-yl)propyl)-4-methylpyridin-2-amine
Authors : Li, H.; Poulos, T.L.
Deposited on : 2014-03-15
Resolution : 1.90 Å(reported)

This is a Full wwPDB X-ray Structure Validation Report for a publicly released PDB entry.
We welcome your comments at validation@mail.wwpdb.org
A user guide is available at
<http://wwpdb.org/validation/2016/XrayValidationReportHelp>
with specific help available everywhere you see the ⓘ symbol.

The following versions of software and data (see [references ⓘ](#)) were used in the production of this report:

MolProbity : 4.02b-467
Mogul : 1.7 (RC4), CSD as536be (2015)
Xtriage (Phenix) : 1.9-1692
EDS : rb-20026688
Percentile statistics : 20151230.v01 (using entries in the PDB archive December 30th 2015)
Refmac : 5.8.0135
CCP4 : 6.5.0
Ideal geometry (proteins) : Engh & Huber (2001)
Ideal geometry (DNA, RNA) : Parkinson et al. (1996)
Validation Pipeline (wwPDB-VP) : trunk26865

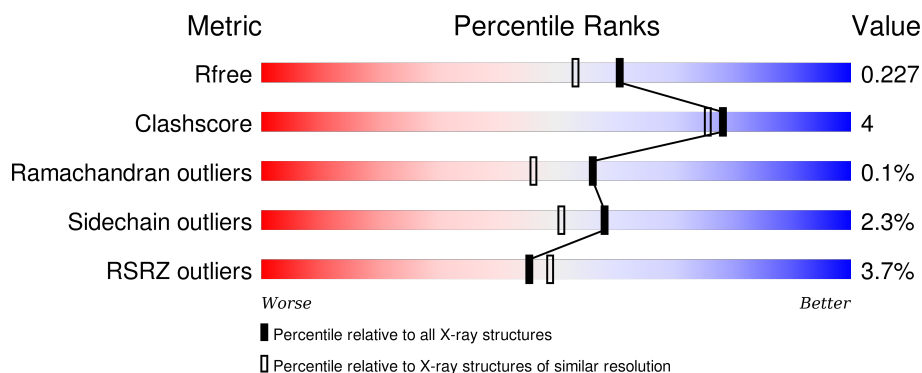
1 Overall quality at a glance

The following experimental techniques were used to determine the structure:

X-RAY DIFFRACTION

The reported resolution of this entry is 1.90 Å.

Percentile scores (ranging between 0-100) for global validation metrics of the entry are shown in the following graphic. The table shows the number of entries on which the scores are based.



Metric	Whole archive (#Entries)	Similar resolution (#Entries, resolution range(Å))
R_{free}	91344	4755 (1.90-1.90)
Clashscore	102246	5398 (1.90-1.90)
Ramachandran outliers	100387	5338 (1.90-1.90)
Sidechain outliers	100360	5339 (1.90-1.90)
RSRZ outliers	91569	4766 (1.90-1.90)

The table below summarises the geometric issues observed across the polymeric chains and their fit to the electron density. The red, orange, yellow and green segments on the lower bar indicate the fraction of residues that contain outliers for ≥ 3 , 2, 1 and 0 types of geometric quality criteria. A grey segment represents the fraction of residues that are not modelled. The numeric value for each fraction is indicated below the corresponding segment, with a dot representing fractions $\leq 5\%$. The upper red bar (where present) indicates the fraction of residues that have poor fit to the electron density. The numeric value is given above the bar.

Mol	Chain	Length	Quality of chain
1	A	422	<div> <div>6%</div> <div>87%</div> <div>9%</div> <div>••</div> </div>
1	B	422	<div> <div>%</div> <div>88%</div> <div>9%</div> <div>•</div> </div>

The following table lists non-polymeric compounds, carbohydrate monomers and non-standard residues in protein, DNA, RNA chains that are outliers for geometric or electron-density-fit criteria:

Mol	Type	Chain	Res	Chirality	Geometry	Clashes	Electron density
2	HEM	A	1717	-	-	-	X
5	ACT	A	1720	-	-	-	X
5	ACT	B	1722	-	-	-	X

2 Entry composition [i](#)

There are 7 unique types of molecules in this entry. The entry contains 7308 atoms, of which 0 are hydrogens and 0 are deuteriums.

In the tables below, the ZeroOcc column contains the number of atoms modelled with zero occupancy, the AltConf column contains the number of residues with at least one atom in alternate conformation and the Trace column contains the number of residues modelled with at most 2 atoms.

- Molecule 1 is a protein called NITRIC OXIDE SYNTHASE, BRAIN.

Mol	Chain	Residues	Atoms					ZeroOcc	AltConf	Trace
1	A	408	Total	C	N	O	S	0	3	1
			3326	2129	567	608	22			
1	B	411	Total	C	N	O	S	0	2	0
			3356	2150	574	610	22			

- Molecule 2 is PROTOPORPHYRIN IX CONTAINING FE (three-letter code: HEM) (formula: $C_{34}H_{32}FeN_4O_4$).



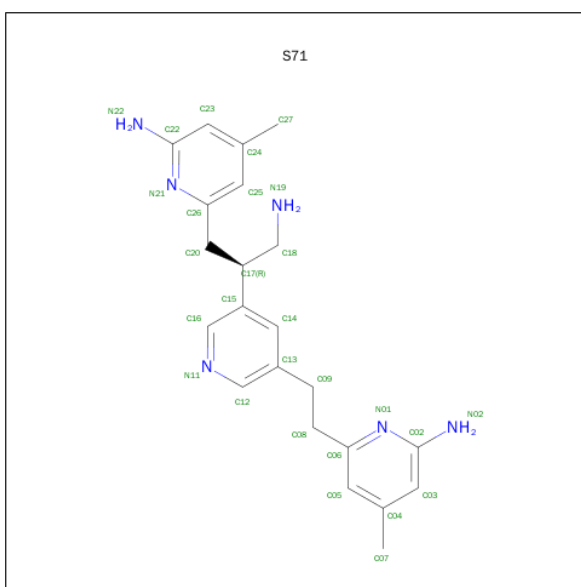
Mol	Chain	Residues	Atoms					ZeroOcc	AltConf
2	A	1	Total	C	Fe	N	O	0	0
			43	34	1	4	4		
2	B	1	Total	C	Fe	N	O	0	0
			43	34	1	4	4		

- Molecule 3 is 5,6,7,8-TETRAHYDROBIOPTERIN (three-letter code: H4B) (formula: $C_9H_{15}N_5O_3$).



Mol	Chain	Residues	Atoms				ZeroOcc	AltConf
3	A	1	Total	C	N	O	0	0
			17	9	5	3		
3	B	1	Total	C	N	O	0	0
			17	9	5	3		

- Molecule 4 is (R)-6-(3-AMINO-2-(5-(2-(6-AMINO-4-METHYLPYRIDIN-2-YL)ETHYL)PYRIDIN-3-YL)PROPYL)-4-METHYLPYRIDIN-2-AMINE (three-letter code: S71) (formula: $C_{22}H_{28}N_6$).



Mol	Chain	Residues	Atoms			ZeroOcc	AltConf
4	A	1	Total	C	N	0	0
			28	22	6		

Continued on next page...

Continued from previous page...

Mol	Chain	Residues	Atoms			ZeroOcc	AltConf
4	B	1	Total	C	N	0	0
			28	22	6		

- Molecule 5 is ACETATE ION (three-letter code: ACT) (formula: $C_2H_3O_2$).



Mol	Chain	Residues	Atoms			ZeroOcc	AltConf
5	A	1	Total	C	O	0	0
			4	2	2		
5	B	1	Total	C	O	0	0
			4	2	2		

- Molecule 6 is ZINC ION (three-letter code: ZN) (formula: Zn).

Mol	Chain	Residues	Atoms		ZeroOcc	AltConf
6	A	1	Total	Zn	0	0
			1	1		

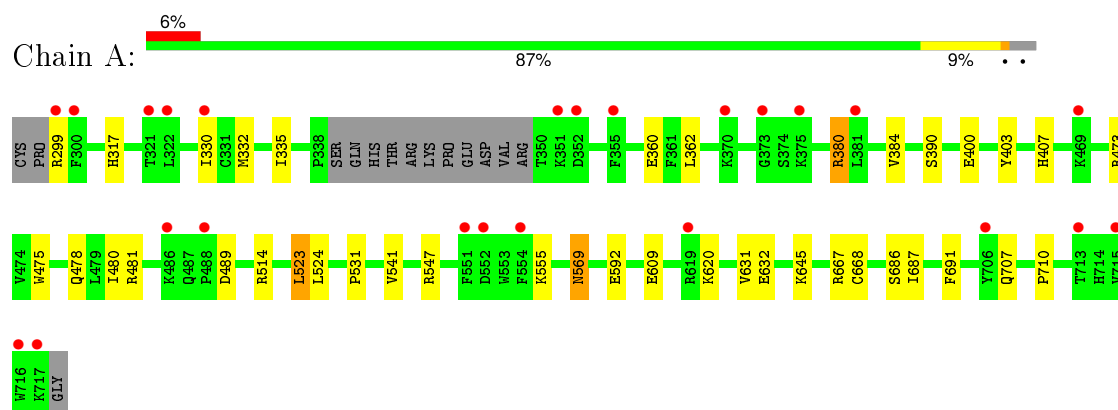
- Molecule 7 is water.

Mol	Chain	Residues	Atoms		ZeroOcc	AltConf
7	A	189	Total	O	0	0
			189	189		
7	B	252	Total	O	0	0
			252	252		

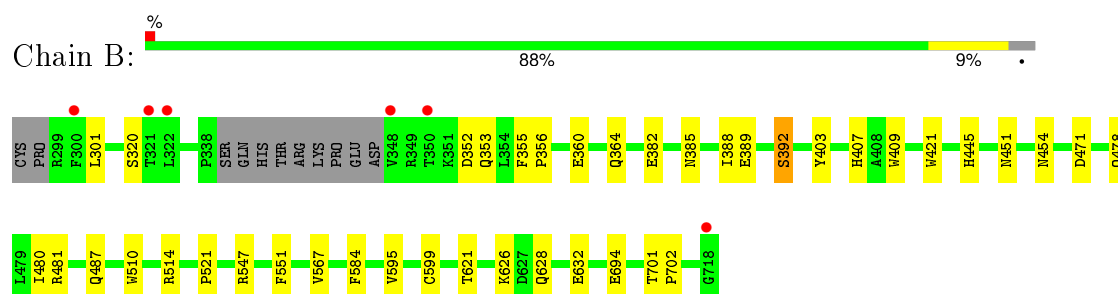
3 Residue-property plots

These plots are drawn for all protein, RNA and DNA chains in the entry. The first graphic for a chain summarises the proportions of errors displayed in the second graphic. The second graphic shows the sequence view annotated by issues in geometry and electron density. Residues are color-coded according to the number of geometric quality criteria for which they contain at least one outlier: green = 0, yellow = 1, orange = 2 and red = 3 or more. A red dot above a residue indicates a poor fit to the electron density ($RSRZ > 2$). Stretches of 2 or more consecutive residues without any outlier are shown as a green connector. Residues present in the sample, but not in the model, are shown in grey.

• Molecule 1: NITRIC OXIDE SYNTHASE, BRAIN



• Molecule 1: NITRIC OXIDE SYNTHASE, BRAIN



4 Data and refinement statistics

Property	Value	Source
Space group	P 21 21 21	Depositor
Cell constants a, b, c, α , β , γ	52.23Å 110.78Å 164.13Å 90.00° 90.00° 90.00°	Depositor
Resolution (Å)	49.10 – 1.90 49.05 – 1.90	Depositor EDS
% Data completeness (in resolution range)	98.8 (49.10-1.90) 98.8 (49.05-1.90)	Depositor EDS
R_{merge}	0.06	Depositor
R_{sym}	(Not available)	Depositor
$\langle I/\sigma(I) \rangle$ ¹	2.72 (at 1.91Å)	Xtriage
Refinement program	REFMAC 5.7.0029	Depositor
R, R_{free}	0.189 , 0.228 0.189 , 0.227	Depositor DCC
R_{free} test set	3711 reflections (5.23%)	DCC
Wilson B-factor (Å ²)	25.4	Xtriage
Anisotropy	0.596	Xtriage
Bulk solvent k_{sol} (e/Å ³), B_{sol} (Å ²)	0.36 , 44.0	EDS
Estimated twinning fraction	No twinning to report.	Xtriage
L-test for twinning ²	$\langle L \rangle = 0.49$, $\langle L^2 \rangle = 0.32$	Xtriage
Outliers	1 of 74650 reflections (0.001%)	Xtriage
F_o, F_c correlation	0.96	EDS
Total number of atoms	7308	wwPDB-VP
Average B, all atoms (Å ²)	35.0	wwPDB-VP

Xtriage's analysis on translational NCS is as follows: *The largest off-origin peak in the Patterson function is 4.78% of the height of the origin peak. No significant pseudotranslation is detected.*

¹Intensities estimated from amplitudes.

²Theoretical values of $\langle |L| \rangle$, $\langle L^2 \rangle$ for acentric reflections are 0.5, 0.375 respectively for untwinned datasets, and 0.333, 0.2 for perfectly twinned datasets.

5 Model quality [i](#)

5.1 Standard geometry [i](#)

Bond lengths and bond angles in the following residue types are not validated in this section: S71, HEM, ZN, H4B, ACT

The Z score for a bond length (or angle) is the number of standard deviations the observed value is removed from the expected value. A bond length (or angle) with $|Z| > 5$ is considered an outlier worth inspection. RMSZ is the root-mean-square of all Z scores of the bond lengths (or angles).

Mol	Chain	Bond lengths		Bond angles	
		RMSZ	# Z >5	RMSZ	# Z >5
1	A	0.51	0/3428	0.63	0/4651
1	B	0.57	0/3456	0.67	1/4686 (0.0%)
All	All	0.54	0/6884	0.65	1/9337 (0.0%)

There are no bond length outliers.

All (1) bond angle outliers are listed below:

Mol	Chain	Res	Type	Atoms	Z	Observed(°)	Ideal(°)
1	B	471	ASP	CB-CG-OD1	5.26	123.04	118.30

There are no chirality outliers.

There are no planarity outliers.

5.2 Too-close contacts [i](#)

In the following table, the Non-H and H(model) columns list the number of non-hydrogen atoms and hydrogen atoms in the chain respectively. The H(added) column lists the number of hydrogen atoms added and optimized by MolProbity. The Clashes column lists the number of clashes within the asymmetric unit, whereas Symm-Clashes lists symmetry related clashes.

Mol	Chain	Non-H	H(model)	H(added)	Clashes	Symm-Clashes
1	A	3326	0	3237	22	0
1	B	3356	0	3273	25	0
2	A	43	0	30	4	0
2	B	43	0	30	4	0
3	A	17	0	15	0	0
3	B	17	0	15	0	0
4	A	28	0	28	1	0
4	B	28	0	28	1	0

Continued on next page...

Continued from previous page...

Mol	Chain	Non-H	H(model)	H(added)	Clashes	Symm-Clashes
5	A	4	0	3	0	0
5	B	4	0	3	0	0
6	A	1	0	0	0	0
7	A	189	0	0	2	0
7	B	252	0	0	2	0
All	All	7308	0	6662	49	0

The all-atom clashscore is defined as the number of clashes found per 1000 atoms (including hydrogen atoms). The all-atom clashscore for this structure is 4.

All (49) close contacts within the same asymmetric unit are listed below, sorted by their clash magnitude.

Atom-1	Atom-2	Interatomic distance (Å)	Clash overlap (Å)
1:A:480:ILE:HD13	1:A:541:VAL:HG13	1.72	0.71
1:B:382:GLU:HG3	7:B:2035:HOH:O	1.89	0.71
2:B:1719:HEM:HBB2	2:B:1719:HEM:HHC	1.72	0.71
2:A:1717:HEM:HBB2	2:A:1717:HEM:HHC	1.79	0.65
1:A:523:LEU:HD22	1:A:531:PRO:HB2	1.80	0.63
1:A:609:GLU:HG3	7:A:2146:HOH:O	2.00	0.62
2:A:1717:HEM:HBC2	2:A:1717:HEM:CMC	2.33	0.58
2:A:1717:HEM:HBC2	2:A:1717:HEM:HMC1	1.84	0.58
1:A:478:GLN:HB2	1:A:481:ARG:HG3	1.85	0.58
1:A:475:TRP:HB2	1:A:523:LEU:HB3	1.88	0.54
1:A:335:ILE:HD13	1:B:694:GLU:HB3	1.90	0.54
1:B:551:PHE:HE2	1:B:632:GLU:HG3	1.74	0.53
1:B:403:TYR:CE2	1:B:407:HIS:CE1	2.97	0.52
1:B:364:GLN:NE2	7:B:2022:HOH:O	2.41	0.52
1:B:478:GLN:HB2	1:B:481:ARG:HG3	1.91	0.52
1:A:632:GLU:OE2	1:B:628:GLN:NE2	2.43	0.52
1:B:355[B]:PHE:HB2	1:B:356:PRO:HD3	1.94	0.50
2:B:1719:HEM:HHC	2:B:1719:HEM:CBB	2.40	0.49
1:A:362:LEU:HD11	1:A:384:VAL:HG21	1.94	0.49
1:B:701:THR:HA	1:B:702:PRO:C	2.32	0.49
1:B:355[B]:PHE:HB2	1:B:356:PRO:CD	2.43	0.48
7:A:2111:HOH:O	1:B:621:THR:HG22	2.13	0.48
1:B:356:PRO:O	1:B:360:GLU:HG3	2.14	0.48
1:A:330:ILE:HG23	1:A:330:ILE:O	2.15	0.46
1:A:380:ARG:HD3	1:A:400:GLU:OE2	2.16	0.46
1:A:473:ARG:NH2	1:A:710:PRO:HD3	2.31	0.46
1:B:510:TRP:CE2	1:B:521:PRO:HD3	2.50	0.46
1:B:451:ASN:HB3	1:B:454:ASN:O	2.17	0.44

Continued on next page...

Continued from previous page...

Atom-1	Atom-2	Interatomic distance (Å)	Clash overlap (Å)
1:B:409:TRP:CE3	1:B:421:TRP:HA	2.52	0.44
1:B:388:ILE:O	1:B:392:SER:N	2.51	0.44
1:A:687:ILE:HD12	1:B:626:LYS:HB3	2.00	0.44
1:A:403:TYR:CE2	1:A:407:HIS:CE1	3.06	0.43
1:A:569:ASN:H	1:A:569:ASN:HD22	1.65	0.43
1:B:445:HIS:C	1:B:445:HIS:CD2	2.92	0.43
1:A:631:VAL:HG11	1:B:628:GLN:HG2	2.01	0.43
1:A:524:LEU:O	1:A:531:PRO:HA	2.19	0.43
1:A:299:ARG:O	1:A:317:HIS:CE1	2.72	0.43
1:A:667:ARG:NH1	1:A:668[A]:CYS:SG	2.92	0.42
1:B:584:PHE:CD1	2:B:1719:HEM:CAC	3.03	0.42
2:B:1719:HEM:HBC2	2:B:1719:HEM:CMC	2.50	0.42
2:A:1717:HEM:CBC	2:A:1717:HEM:HMC1	2.49	0.42
1:A:686:SER:HA	1:A:691:PHE:CG	2.55	0.42
1:A:332:MET:CE	1:B:301:LEU:HD22	2.49	0.42
1:B:567:VAL:HG23	4:B:1721:S71:H05	2.02	0.41
1:B:595:VAL:O	1:B:599:CYS:HB2	2.20	0.41
1:B:487:GLN:OE1	1:B:514:ARG:NH2	2.53	0.41
1:B:355[A]:PHE:CE1	1:B:385:ASN:HB2	2.55	0.41
1:A:592:GLU:OE1	4:A:1719:S71:N01	2.54	0.41
1:A:569:ASN:O	1:A:707:GLN:HG2	2.21	0.40

There are no symmetry-related clashes.

5.3 Torsion angles ⓘ

5.3.1 Protein backbone ⓘ

In the following table, the Percentiles column shows the percent Ramachandran outliers of the chain as a percentile score with respect to all X-ray entries followed by that with respect to entries of similar resolution.

The Analysed column shows the number of residues for which the backbone conformation was analysed, and the total number of residues.

Mol	Chain	Analysed	Favoured	Allowed	Outliers	Percentiles	
1	A	407/422 (96%)	393 (97%)	13 (3%)	1 (0%)	52	42
1	B	409/422 (97%)	403 (98%)	6 (2%)	0	100	100
All	All	816/844 (97%)	796 (98%)	19 (2%)	1 (0%)	56	46

All (1) Ramachandran outliers are listed below:

Mol	Chain	Res	Type
1	A	489	ASP

5.3.2 Protein sidechains ⓘ

In the following table, the Percentiles column shows the percent sidechain outliers of the chain as a percentile score with respect to all X-ray entries followed by that with respect to entries of similar resolution.

The Analysed column shows the number of residues for which the sidechain conformation was analysed, and the total number of residues.

Mol	Chain	Analysed	Rotameric	Outliers	Percentiles	
1	A	366/377 (97%)	356 (97%)	10 (3%)	52	43
1	B	368/377 (98%)	361 (98%)	7 (2%)	65	59
All	All	734/754 (97%)	717 (98%)	17 (2%)	58	51

All (17) residues with a non-rotameric sidechain are listed below:

Mol	Chain	Res	Type
1	A	360	GLU
1	A	380	ARG
1	A	390	SER
1	A	514	ARG
1	A	523	LEU
1	A	547	ARG
1	A	555	LYS
1	A	569	ASN
1	A	620	LYS
1	A	645	LYS
1	B	320	SER
1	B	352	ASP
1	B	353	GLN
1	B	389	GLU
1	B	392	SER
1	B	480	ILE
1	B	547	ARG

Some sidechains can be flipped to improve hydrogen bonding and reduce clashes. All (14) such sidechains are listed below:

Mol	Chain	Res	Type
1	A	353	GLN
1	A	454	ASN
1	A	527	ASN
1	A	569	ASN
1	A	605	ASN
1	A	697	ASN
1	B	364	GLN
1	B	454	ASN
1	B	507	GLN
1	B	527	ASN
1	B	601	ASN
1	B	605	ASN
1	B	628	GLN
1	B	697	ASN

5.3.3 RNA [i](#)

There are no RNA molecules in this entry.

5.4 Non-standard residues in protein, DNA, RNA chains [i](#)

There are no non-standard protein/DNA/RNA residues in this entry.

5.5 Carbohydrates [i](#)

There are no carbohydrates in this entry.

5.6 Ligand geometry [i](#)

Of 9 ligands modelled in this entry, 1 is monoatomic - leaving 8 for Mogul analysis.

In the following table, the Counts columns list the number of bonds (or angles) for which Mogul statistics could be retrieved, the number of bonds (or angles) that are observed in the model and the number of bonds (or angles) that are defined in the chemical component dictionary. The Link column lists molecule types, if any, to which the group is linked. The Z score for a bond length (or angle) is the number of standard deviations the observed value is removed from the expected value. A bond length (or angle) with $|Z| > 2$ is considered an outlier worth inspection. RMSZ is the root-mean-square of all Z scores of the bond lengths (or angles).

Mol	Type	Chain	Res	Link	Bond lengths			Bond angles		
					Counts	RMSZ	$\# Z > 2$	Counts	RMSZ	$\# Z > 2$
2	HEM	A	1717	1	30,50,50	2.20	9 (30%)	24,82,82	2.42	10 (41%)

Mol	Type	Chain	Res	Link	Bond lengths			Bond angles		
					Counts	RMSZ	# Z > 2	Counts	RMSZ	# Z > 2
3	H4B	A	1718	-	13,18,18	1.26	2 (15%)	11,26,26	2.53	6 (54%)
4	S71	A	1719	-	30,30,30	0.81	1 (3%)	37,41,41	1.94	8 (21%)
5	ACT	A	1720	-	1,3,3	2.01	1 (100%)	0,3,3	0.00	-
2	HEM	B	1719	1	30,50,50	2.09	7 (23%)	24,82,82	2.57	11 (45%)
3	H4B	B	1720	-	13,18,18	1.16	1 (7%)	11,26,26	2.56	4 (36%)
4	S71	B	1721	-	30,30,30	0.89	1 (3%)	37,41,41	2.25	12 (32%)
5	ACT	B	1722	-	1,3,3	1.41	0	0,3,3	0.00	-

In the following table, the Chirals column lists the number of chiral outliers, the number of chiral centers analysed, the number of these observed in the model and the number defined in the chemical component dictionary. Similar counts are reported in the Torsion and Rings columns. '-' means no outliers of that kind were identified.

Mol	Type	Chain	Res	Link	Chirals	Torsions	Rings
2	HEM	A	1717	1	-	0/10/54/54	0/0/8/8
3	H4B	A	1718	-	-	0/8/17/17	0/2/2/2
4	S71	A	1719	-	-	0/15/15/15	0/3/3/3
5	ACT	A	1720	-	-	0/0/0/0	0/0/0/0
2	HEM	B	1719	1	-	0/10/54/54	0/0/8/8
3	H4B	B	1720	-	-	0/8/17/17	0/2/2/2
4	S71	B	1721	-	-	0/15/15/15	0/3/3/3
5	ACT	B	1722	-	-	0/0/0/0	0/0/0/0

All (22) bond length outliers are listed below:

Mol	Chain	Res	Type	Atoms	Z	Observed(Å)	Ideal(Å)
2	B	1719	HEM	C2C-C1C	-6.66	1.39	1.52
2	A	1717	HEM	C2D-C3D	-6.31	1.35	1.54
2	B	1719	HEM	C2D-C3D	-6.21	1.35	1.54
2	A	1717	HEM	C2C-C1C	-5.83	1.41	1.52
2	A	1717	HEM	C3D-C4D	-3.69	1.46	1.51
2	B	1719	HEM	C3D-C4D	-2.93	1.47	1.51
2	A	1717	HEM	C2B-C1B	-2.45	1.43	1.51
4	B	1721	S71	C20-C17	-2.11	1.52	1.54
2	B	1719	HEM	C2B-C1B	-2.08	1.45	1.51
4	A	1719	S71	C20-C17	-2.01	1.52	1.54
5	A	1720	ACT	CH3-C	2.01	1.51	1.48
2	A	1717	HEM	C1C-NC	2.09	1.38	1.36
2	B	1719	HEM	FE-NB	2.09	2.08	1.97
3	B	1720	H4B	C4-N3	2.17	1.37	1.33
2	A	1717	HEM	C4C-NC	2.20	1.38	1.36

Continued on next page...

Continued from previous page...

Mol	Chain	Res	Type	Atoms	Z	Observed(Å)	Ideal(Å)
2	B	1719	HEM	CHC-C1C	2.39	1.42	1.36
2	A	1717	HEM	FE-NB	2.69	2.11	1.97
3	A	1718	H4B	C4-N3	2.75	1.38	1.33
3	A	1718	H4B	C2-N2	2.84	1.39	1.34
2	A	1717	HEM	CHC-C1C	2.97	1.43	1.36
2	B	1719	HEM	FE-NC	3.05	2.07	1.95
2	A	1717	HEM	FE-NC	3.19	2.08	1.95

All (51) bond angle outliers are listed below:

Mol	Chain	Res	Type	Atoms	Z	Observed(°)	Ideal(°)
2	B	1719	HEM	C1D-CHD-C4C	-4.61	118.12	125.82
3	A	1718	H4B	N3-C2-N1	-4.21	118.63	125.53
2	A	1717	HEM	C1D-CHD-C4C	-4.07	119.01	125.82
4	B	1721	S71	C05-C06-N01	-3.88	118.58	122.96
2	B	1719	HEM	CBA-CAA-C2A	-3.51	106.23	112.53
2	A	1717	HEM	CBA-CAA-C2A	-3.46	106.33	112.53
3	B	1720	H4B	N3-C2-N1	-3.33	120.07	125.53
4	B	1721	S71	C14-C15-C17	-3.30	116.05	120.89
4	A	1719	S71	C15-C16-N11	-3.23	119.06	124.27
4	B	1721	S71	C15-C16-N11	-3.08	119.30	124.27
4	A	1719	S71	C05-C06-N01	-2.83	119.76	122.96
2	B	1719	HEM	C3B-CAB-CBB	-2.72	120.29	124.46
2	B	1719	HEM	C3C-CAC-CBC	-2.71	120.30	124.46
4	A	1719	S71	C04-C05-C06	-2.70	118.59	120.28
2	A	1717	HEM	CBD-CAD-C3D	-2.65	105.85	113.55
2	B	1719	HEM	C3B-C4B-NB	-2.60	106.66	111.63
2	A	1717	HEM	C3B-C4B-NB	-2.43	106.99	111.63
2	B	1719	HEM	CBD-CAD-C3D	-2.38	106.63	113.55
4	B	1721	S71	C25-C26-N21	-2.25	120.42	122.96
4	A	1719	S71	C25-C26-N21	-2.10	120.59	122.96
4	B	1721	S71	C04-C05-C06	-2.08	118.97	120.28
4	B	1721	S71	C14-C13-C12	2.17	118.94	116.57
4	B	1721	S71	N22-C22-N21	2.45	120.96	116.50
3	A	1718	H4B	N2-C2-N1	2.48	121.30	117.20
3	B	1720	H4B	C2-N1-C8A	2.50	120.16	114.54
2	A	1717	HEM	C2D-C3D-C4D	2.60	105.90	101.50
2	A	1717	HEM	CMD-C2D-C3D	2.60	125.84	114.35
3	A	1718	H4B	C4-C4A-C8A	2.64	116.95	114.56
2	B	1719	HEM	CMD-C2D-C3D	2.82	126.81	114.35
3	A	1718	H4B	C4A-C8A-N8	2.85	121.79	118.43
4	A	1719	S71	C12-N11-C16	2.90	121.86	117.50

Continued on next page...

Continued from previous page...

Mol	Chain	Res	Type	Atoms	Z	Observed(°)	Ideal(°)
4	B	1721	S71	C12-N11-C16	2.92	121.90	117.50
4	A	1719	S71	C14-C15-C16	3.17	120.25	116.78
4	B	1721	S71	C14-C15-C16	3.28	120.38	116.78
3	A	1718	H4B	C4-N3-C2	3.29	120.50	115.94
4	B	1721	S71	C08-C06-C05	3.31	125.78	121.13
2	A	1717	HEM	CMB-C2B-C3B	3.66	125.68	116.53
2	B	1719	HEM	CMC-C2C-C3C	3.74	125.87	116.53
2	A	1717	HEM	CAD-C3D-C4D	3.79	125.82	112.47
2	B	1719	HEM	CMB-C2B-C3B	3.87	126.20	116.53
3	A	1718	H4B	C2-N1-C8A	3.93	123.38	114.54
2	A	1717	HEM	CMC-C2C-C3C	4.20	127.03	116.53
3	B	1720	H4B	C4-N3-C2	4.22	121.80	115.94
4	B	1721	S71	C22-N21-C26	4.38	121.34	118.23
4	A	1719	S71	C22-N21-C26	4.44	121.39	118.23
2	B	1719	HEM	CAD-C3D-C2D	4.47	126.06	113.22
2	B	1719	HEM	CAD-C3D-C4D	4.82	129.49	112.47
3	B	1720	H4B	C4-C4A-C8A	5.03	119.12	114.56
2	A	1717	HEM	CAD-C3D-C2D	5.22	128.21	113.22
4	A	1719	S71	C02-N01-C06	5.93	122.44	118.23
4	B	1721	S71	C02-N01-C06	7.54	123.59	118.23

There are no chirality outliers.

There are no torsion outliers.

There are no ring outliers.

4 monomers are involved in 10 short contacts:

Mol	Chain	Res	Type	Clashes	Symm-Clashes
2	A	1717	HEM	4	0
4	A	1719	S71	1	0
2	B	1719	HEM	4	0
4	B	1721	S71	1	0

5.7 Other polymers [i](#)

There are no such residues in this entry.

5.8 Polymer linkage issues [i](#)

There are no chain breaks in this entry.

6 Fit of model and data

6.1 Protein, DNA and RNA chains

In the following table, the column labelled ‘#RSRZ> 2’ contains the number (and percentage) of RSRZ outliers, followed by percent RSRZ outliers for the chain as percentile scores relative to all X-ray entries and entries of similar resolution. The OWAB column contains the minimum, median, 95th percentile and maximum values of the occupancy-weighted average B-factor per residue. The column labelled ‘Q< 0.9’ lists the number of (and percentage) of residues with an average occupancy less than 0.9.

Mol	Chain	Analysed	<RSRZ>	#RSRZ>2	OWAB(Å ²)	Q<0.9
1	A	408/422 (96%)	0.31	24 (5%) 26 29	16, 38, 70, 90	0
1	B	411/422 (97%)	0.01	6 (1%) 76 79	16, 28, 51, 70	0
All	All	819/844 (97%)	0.16	30 (3%) 45 49	16, 32, 65, 90	0

All (30) RSRZ outliers are listed below:

Mol	Chain	Res	Type	RSRZ
1	A	488	PRO	4.8
1	A	373	GLY	4.0
1	A	355	PHE	4.0
1	A	321	THR	3.8
1	B	348	VAL	3.5
1	A	322	LEU	3.5
1	A	300	PHE	3.2
1	A	551	PHE	3.2
1	A	713	THR	3.2
1	A	552	ASP	3.2
1	B	322	LEU	3.1
1	A	352	ASP	3.1
1	B	718	GLY	2.9
1	A	370	LYS	2.8
1	B	300	PHE	2.7
1	A	299	ARG	2.7
1	B	321	THR	2.7
1	A	706	TYR	2.7
1	A	715	VAL	2.6
1	A	717	LYS	2.4
1	A	716	TRP	2.4
1	A	469	LYS	2.3
1	B	350	THR	2.3
1	A	486	LYS	2.3

Continued on next page...

Continued from previous page...

Mol	Chain	Res	Type	RSRZ
1	A	330	ILE	2.1
1	A	619	ARG	2.1
1	A	351	LYS	2.1
1	A	554	PHE	2.1
1	A	375	LYS	2.0
1	A	381	LEU	2.0

6.2 Non-standard residues in protein, DNA, RNA chains [i](#)

There are no non-standard protein/DNA/RNA residues in this entry.

6.3 Carbohydrates [i](#)

There are no carbohydrates in this entry.

6.4 Ligands [i](#)

In the following table, the Atoms column lists the number of modelled atoms in the group and the number defined in the chemical component dictionary. LLDF column lists the quality of electron density of the group with respect to its neighbouring residues in protein, DNA or RNA chains. The B-factors column lists the minimum, median, 95th percentile and maximum values of B factors of atoms in the group. The column labelled 'Q< 0.9' lists the number of atoms with occupancy less than 0.9.

Mol	Type	Chain	Res	Atoms	RSCC	RSR	LLDF	B-factors(\AA^2)	Q<0.9
5	ACT	A	1720	4/4	0.81	0.29	18.94	54,56,58,61	0
5	ACT	B	1722	4/4	0.91	0.15	3.68	49,49,50,52	0
2	HEM	A	1717	43/43	0.97	0.12	2.09	20,22,26,29	0
2	HEM	B	1719	43/43	0.97	0.12	1.60	17,19,24,28	0
4	S71	B	1721	28/28	0.95	0.11	0.33	20,27,29,31	0
4	S71	A	1719	28/28	0.95	0.11	0.31	20,30,34,36	0
3	H4B	B	1720	17/17	0.97	0.10	-0.14	18,20,24,24	0
3	H4B	A	1718	17/17	0.96	0.09	-0.91	18,20,24,25	0
6	ZN	A	1721	1/1	0.99	0.07	-2.19	26,26,26,26	0

6.5 Other polymers [i](#)

There are no such residues in this entry.