



Full wwPDB X-ray Structure Validation Report ⓘ

Aug 8, 2016 – 05:51 PM EDT

PDB ID : 5CW2
Title : Crystal structure of Epoxide Hydrolase A from Mycobacterium thermoresistibile
Authors : Schulz, E.C.; Wilmanns, M.
Deposited on : 2015-07-27
Resolution : 2.00 Å(reported)

This is a Full wwPDB X-ray Structure Validation Report for a publicly released PDB entry.

We welcome your comments at validation@mail.wwpdb.org

A user guide is available at

<http://wwpdb.org/validation/2016/XrayValidationReportHelp>

with specific help available everywhere you see the ⓘ symbol.

The following versions of software and data (see [references ⓘ](#)) were used in the production of this report:

MolProbity	:	4.02b-467
Mogul	:	unknown
Xtriage (Phenix)	:	1.9-1692
EDS	:	rb-20027939
Percentile statistics	:	20151230.v01 (using entries in the PDB archive December 30th 2015)
Refmac	:	5.8.0135
CCP4	:	6.5.0
Ideal geometry (proteins)	:	Engh & Huber (2001)
Ideal geometry (DNA, RNA)	:	Parkinson et al. (1996)
Validation Pipeline (wwPDB-VP)	:	rb-20027939

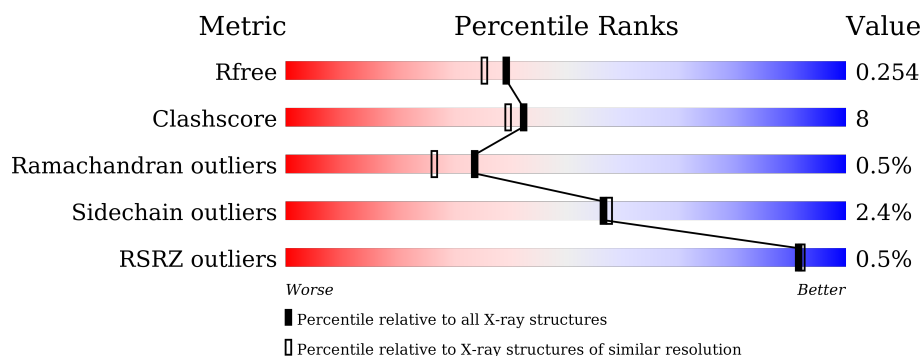
1 Overall quality at a glance ⓘ

The following experimental techniques were used to determine the structure:

X-RAY DIFFRACTION

The reported resolution of this entry is 2.00 Å.

Percentile scores (ranging between 0-100) for global validation metrics of the entry are shown in the following graphic. The table shows the number of entries on which the scores are based.



Metric	Whole archive (#Entries)	Similar resolution (#Entries, resolution range(Å))
R_{free}	91344	6249 (2.00-2.00)
Clashscore	102246	7340 (2.00-2.00)
Ramachandran outliers	100387	7248 (2.00-2.00)
Sidechain outliers	100360	7247 (2.00-2.00)
RSRZ outliers	91569	6262 (2.00-2.00)

The table below summarises the geometric issues observed across the polymeric chains and their fit to the electron density. The red, orange, yellow and green segments on the lower bar indicate the fraction of residues that contain outliers for ≥ 3 , 2, 1 and 0 types of geometric quality criteria. A grey segment represents the fraction of residues that are not modelled. The numeric value for each fraction is indicated below the corresponding segment, with a dot representing fractions $\leq 5\%$. The upper red bar (where present) indicates the fraction of residues that have poor fit to the electron density. The numeric value is given above the bar.

Mol	Chain	Length	Quality of chain
1	A	325	<div> <div>78%</div> <div>19%</div> <div>..</div> </div>
1	B	325	<div> <div>%</div> <div>76%</div> <div>22%</div> <div>.</div> </div>
1	C	325	<div> <div>%</div> <div>79%</div> <div>18%</div> <div>..</div> </div>
1	D	325	<div> <div>83%</div> <div>14%</div> <div>..</div> </div>

2 Entry composition

There are 4 unique types of molecules in this entry. The entry contains 19868 atoms, of which 9497 are hydrogens and 0 are deuteriums.

In the tables below, the ZeroOcc column contains the number of atoms modelled with zero occupancy, the AltConf column contains the number of residues with at least one atom in alternate conformation and the Trace column contains the number of residues modelled with at most 2 atoms.

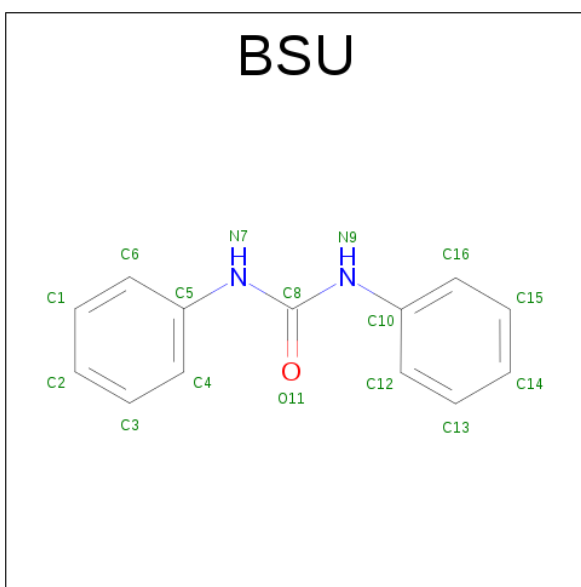
- Molecule 1 is a protein called Putative epoxide hydrolase EPHA.

Mol	Chain	Residues	Atoms						ZeroOcc	AltConf	Trace
1	C	319	Total	C	H	N	O	S	0	0	0
			4845	1573	2372	431	462	7			
1	A	319	Total	C	H	N	O	S	0	0	0
			4846	1573	2373	431	462	7			
1	B	319	Total	C	H	N	O	S	0	0	0
			4846	1573	2373	431	462	7			
1	D	319	Total	C	H	N	O	S	0	1	0
			4858	1577	2379	431	464	7			

There are 16 discrepancies between the modelled and reference sequences:

Chain	Residue	Modelled	Actual	Comment	Reference
C	-3	GLY	-	expression tag	UNP G7CF24
C	-2	ALA	-	expression tag	UNP G7CF24
C	-1	MET	-	expression tag	UNP G7CF24
C	0	ALA	-	expression tag	UNP G7CF24
A	-3	GLY	-	expression tag	UNP G7CF24
A	-2	ALA	-	expression tag	UNP G7CF24
A	-1	MET	-	expression tag	UNP G7CF24
A	0	ALA	-	expression tag	UNP G7CF24
B	-3	GLY	-	expression tag	UNP G7CF24
B	-2	ALA	-	expression tag	UNP G7CF24
B	-1	MET	-	expression tag	UNP G7CF24
B	0	ALA	-	expression tag	UNP G7CF24
D	-3	GLY	-	expression tag	UNP G7CF24
D	-2	ALA	-	expression tag	UNP G7CF24
D	-1	MET	-	expression tag	UNP G7CF24
D	0	ALA	-	expression tag	UNP G7CF24

- Molecule 2 is 1,3-DIPHENYLUREA (three-letter code: BSU) (formula: C₁₃H₁₂N₂O).



Mol	Chain	Residues	Atoms				ZeroOcc	AltConf
2	C	1	Total	C	N	O	0	0
			16	13	2	1		
2	A	1	Total	C	N	O	0	0
			16	13	2	1		
2	B	1	Total	C	N	O	0	0
			16	13	2	1		
2	D	1	Total	C	N	O	0	0
			16	13	2	1		

- Molecule 3 is SODIUM ION (three-letter code: NA) (formula: Na).

Mol	Chain	Residues	Atoms		ZeroOcc	AltConf
3	D	1	Total	Na	0	0
			1	1		

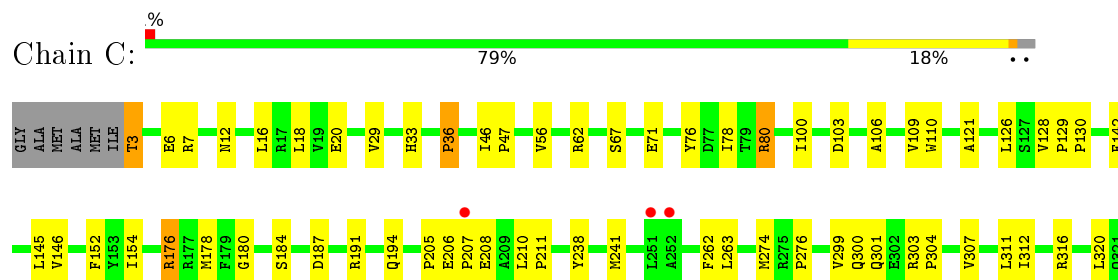
- Molecule 4 is water.

Mol	Chain	Residues	Atoms		ZeroOcc	AltConf
4	C	106	Total	O	0	0
			106	106		
4	A	111	Total	O	0	0
			111	111		
4	B	91	Total	O	0	0
			91	91		
4	D	100	Total	O	0	0
			100	100		

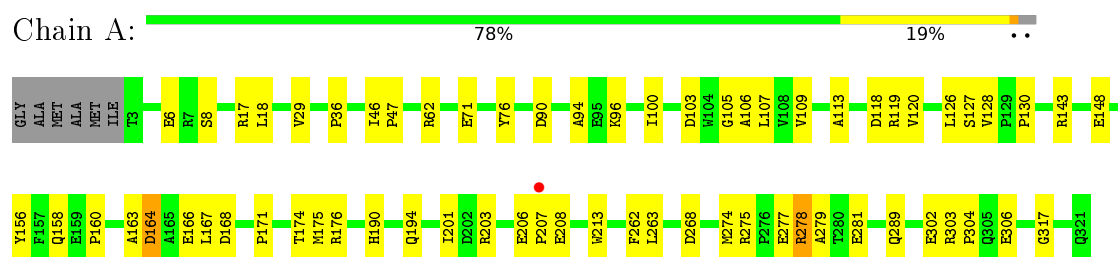
3 Residue-property plots [i](#)

These plots are drawn for all protein, RNA and DNA chains in the entry. The first graphic for a chain summarises the proportions of errors displayed in the second graphic. The second graphic shows the sequence view annotated by issues in geometry and electron density. Residues are color-coded according to the number of geometric quality criteria for which they contain at least one outlier: green = 0, yellow = 1, orange = 2 and red = 3 or more. A red dot above a residue indicates a poor fit to the electron density ($RSRZ > 2$). Stretches of 2 or more consecutive residues without any outlier are shown as a green connector. Residues present in the sample, but not in the model, are shown in grey.

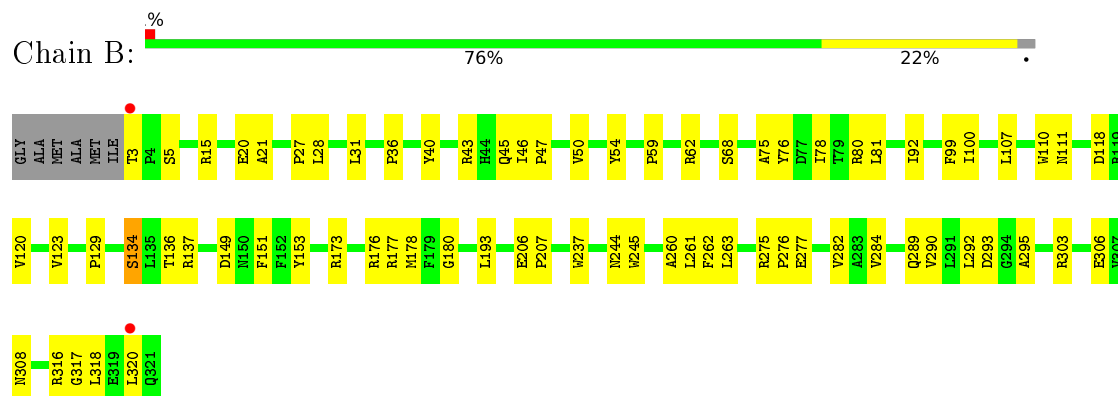
• Molecule 1: Putative epoxide hydrolase EPHA



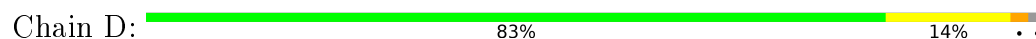
• Molecule 1: Putative epoxide hydrolase EPHA

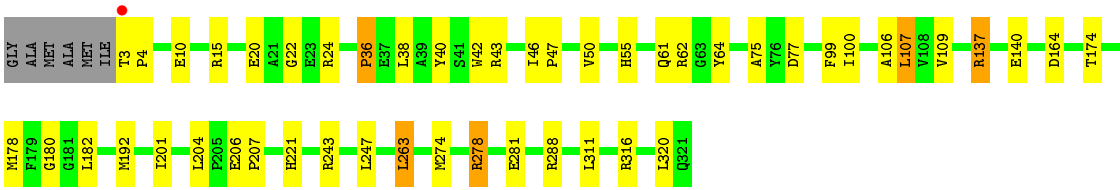


• Molecule 1: Putative epoxide hydrolase EPHA



• Molecule 1: Putative epoxide hydrolase EPHA





4 Data and refinement statistics

Property	Value	Source
Space group	P 1 21 1	Depositor
Cell constants a, b, c, α , β , γ	61.80Å 105.01Å 108.95Å 90.00° 90.11° 90.00°	Depositor
Resolution (Å)	47.82 – 2.00 47.82 – 2.00	Depositor EDS
% Data completeness (in resolution range)	99.5 (47.82-2.00) 99.0 (47.82-2.00)	Depositor EDS
R_{merge}	0.11	Depositor
R_{sym}	(Not available)	Depositor
$\langle I/\sigma(I) \rangle$ ¹	2.16 (at 2.00Å)	Xtriage
Refinement program	PHENIX (phenix.refine: 1.9_1692)	Depositor
R, R_{free}	0.209 , 0.251 0.213 , 0.254	Depositor DCC
R_{free} test set	4668 reflections (5.00%)	DCC
Wilson B-factor (Å ²)	23.2	Xtriage
Anisotropy	0.422	Xtriage
Bulk solvent k_{sol} (e/Å ³), B_{sol} (Å ²)	0.41 , 29.4	EDS
L-test for twinning ²	$\langle L \rangle = 0.50$, $\langle L^2 \rangle = 0.34$	Xtriage
Estimated twinning fraction	0.000 for -h,l,k 0.000 for -h,-l,-k 0.428 for h,-k,-l	Xtriage
F_o, F_c correlation	0.95	EDS
Total number of atoms	19868	wwPDB-VP
Average B, all atoms (Å ²)	23.0	wwPDB-VP

Xtriage's analysis on translational NCS is as follows: *The analyses of the Patterson function reveals a significant off-origin peak that is 56.06 % of the origin peak, indicating pseudo translational symmetry. The chance of finding a peak of this or larger height randomly in a structure without pseudo translational symmetry is equal to 2.8908e-05. The detected translational NCS is most likely also responsible for the elevated intensity ratio.*

¹ Intensities estimated from amplitudes.

² Theoretical values of $\langle |L| \rangle$, $\langle L^2 \rangle$ for acentric reflections are 0.5, 0.333 respectively for untwinned datasets, and 0.375, 0.2 for perfectly twinned datasets.

5 Model quality

5.1 Standard geometry

Bond lengths and bond angles in the following residue types are not validated in this section: NA, BSU

The Z score for a bond length (or angle) is the number of standard deviations the observed value is removed from the expected value. A bond length (or angle) with $|Z| > 5$ is considered an outlier worth inspection. RMSZ is the root-mean-square of all Z scores of the bond lengths (or angles).

Mol	Chain	Bond lengths		Bond angles	
		RMSZ	$\# Z > 5$	RMSZ	$\# Z > 5$
1	A	0.67	0/2541	0.73	0/3470
1	B	0.69	0/2541	0.74	0/3470
1	C	0.66	0/2541	0.72	1/3470 (0.0%)
1	D	0.67	0/2550	0.75	2/3482 (0.1%)
All	All	0.67	0/10173	0.74	3/13892 (0.0%)

Chiral center outliers are detected by calculating the chiral volume of a chiral center and verifying if the center is modelled as a planar moiety or with the opposite hand. A planarity outlier is detected by checking planarity of atoms in a peptide group, atoms in a mainchain group or atoms of a sidechain that are expected to be planar.

Mol	Chain	#Chirality outliers	#Planarity outliers
1	A	0	1

There are no bond length outliers.

All (3) bond angle outliers are listed below:

Mol	Chain	Res	Type	Atoms	Z	Observed(°)	Ideal(°)
1	D	36	PRO	C-N-CA	6.09	136.94	121.70
1	C	176	ARG	NE-CZ-NH1	5.24	122.92	120.30
1	D	180	GLY	N-CA-C	-5.21	100.07	113.10

There are no chirality outliers.

All (1) planarity outliers are listed below:

Mol	Chain	Res	Type	Group
1	A	317	GLY	Peptide

5.2 Too-close contacts ⓘ

In the following table, the Non-H and H(model) columns list the number of non-hydrogen atoms and hydrogen atoms in the chain respectively. The H(added) column lists the number of hydrogen atoms added and optimized by MolProbity. The Clashes column lists the number of clashes within the asymmetric unit, whereas Symm-Clashes lists symmetry related clashes.

Mol	Chain	Non-H	H(model)	H(added)	Clashes	Symm-Clashes
1	A	2473	2373	2381	44	0
1	B	2473	2373	2381	45	0
1	C	2473	2372	2381	47	0
1	D	2479	2379	2387	31	0
2	A	16	0	12	2	0
2	B	16	0	12	2	0
2	C	16	0	12	1	0
2	D	16	0	12	1	0
3	D	1	0	0	0	0
4	A	111	0	0	3	2
4	B	91	0	0	0	1
4	C	106	0	0	3	0
4	D	100	0	0	5	3
All	All	10371	9497	9578	163	3

The all-atom clashscore is defined as the number of clashes found per 1000 atoms (including hydrogen atoms). The all-atom clashscore for this structure is 8.

All (163) close contacts within the same asymmetric unit are listed below, sorted by their clash magnitude.

Atom-1	Atom-2	Interatomic distance (Å)	Clash overlap (Å)
1:D:137:ARG:NH1	4:D:501:HOH:O	1.78	1.16
1:D:192:MET:SD	4:D:568:HOH:O	2.30	0.89
1:B:62:ARG:NH1	1:B:75:ALA:O	2.08	0.86
1:B:134:SER:OG	1:B:136:THR:O	1.95	0.85
1:C:300:GLN:NE2	4:C:501:HOH:O	1.97	0.85
1:C:176:ARG:NE	1:C:206:GLU:OE2	2.10	0.83
1:C:205:PRO:HB3	1:A:208:GLU:HG2	1.68	0.75
1:C:205:PRO:CB	1:A:208:GLU:HG2	2.19	0.71
1:B:176:ARG:NE	1:B:206:GLU:OE2	2.24	0.70
1:D:20:GLU:OE2	1:D:55:HIS:NE2	2.24	0.70
1:C:3:THR:OG1	1:C:3:THR:O	2.09	0.69
1:A:90:ASP:OD1	1:A:119:ARG:NH2	2.27	0.67
1:A:71:GLU:OE1	4:A:501:HOH:O	2.11	0.67
1:A:126:LEU:HG	1:A:263:LEU:HD22	1.77	0.66

Continued on next page...

Continued from previous page...

Atom-1	Atom-2	Interatomic distance (Å)	Clash overlap (Å)
1:A:213:TRP:O	4:A:502:HOH:O	2.13	0.65
1:A:176:ARG:NH2	1:A:206:GLU:OE2	2.28	0.64
1:A:106:ALA:HA	1:A:109:VAL:HG22	1.80	0.64
1:A:107:LEU:HD22	2:A:401:BSU:H131	1.80	0.63
1:C:303:ARG:O	1:C:307:VAL:HG22	1.98	0.62
1:C:300:GLN:HE21	1:C:301:GLN:HG3	1.65	0.62
1:C:128:VAL:HG13	1:C:274:MET:CE	2.30	0.61
1:C:176:ARG:HE	1:C:206:GLU:CD	2.03	0.61
1:C:210:LEU:HD23	1:C:211:PRO:HD2	1.82	0.61
1:A:113:ALA:HA	1:A:120:VAL:HG21	1.83	0.61
1:B:262:PHE:HD2	1:B:289:GLN:HG3	1.66	0.60
1:B:303:ARG:HD2	1:B:306:GLU:OE2	2.01	0.60
1:A:94:ALA:O	1:A:119:ARG:NH1	2.35	0.59
1:B:3:THR:HG22	1:B:3:THR:O	2.02	0.59
1:A:143:ARG:NH1	1:A:148:GLU:OE1	2.37	0.58
1:A:96:LYS:NZ	4:A:506:HOH:O	2.37	0.58
1:C:12:ASN:OD1	1:C:80:ARG:NH2	2.37	0.57
1:B:137:ARG:HG2	1:B:245:TRP:CZ3	2.40	0.57
1:A:171:PRO:O	1:A:174:THR:OG1	2.23	0.57
1:C:187:ASP:HB3	1:C:191:ARG:HH12	1.70	0.56
1:D:140:GLU:OE2	4:D:501:HOH:O	2.17	0.55
1:D:243:ARG:NH1	1:D:247:LEU:HD11	2.20	0.55
1:A:164:ASP:O	1:A:168:ASP:OD2	2.25	0.55
1:C:71:GLU:N	4:C:504:HOH:O	2.31	0.55
1:A:127:SER:OG	1:A:268:ASP:OD2	2.22	0.54
1:B:107:LEU:HD23	1:B:111:ASN:OD1	2.08	0.54
1:C:106:ALA:O	1:C:110:TRP:CD1	2.61	0.54
1:C:142:PHE:O	1:C:146:VAL:HG22	2.08	0.53
1:C:304:PRO:HA	1:C:307:VAL:CG2	2.38	0.53
1:B:99:PHE:CD1	1:B:120:VAL:HG22	2.43	0.53
1:B:46:ILE:HB	1:B:47:PRO:HD3	1.92	0.52
1:C:110:TRP:CZ2	1:C:130:PRO:HD3	2.44	0.52
1:C:128:VAL:HG13	1:C:274:MET:HE2	1.92	0.52
1:B:129:PRO:HG3	1:B:276:PRO:HB3	1.90	0.52
1:B:45:GLN:HA	1:B:308:ASN:HD21	1.75	0.52
1:C:299:VAL:HG12	1:C:307:VAL:HG11	1.92	0.52
1:D:274:MET:SD	4:D:563:HOH:O	2.58	0.51
1:C:300:GLN:HA	1:C:307:VAL:HG21	1.93	0.51
1:C:205:PRO:HB2	1:A:208:GLU:HG2	1.91	0.51
1:A:206:GLU:HG3	1:A:207:PRO:HD2	1.93	0.51
1:B:318:LEU:CB	1:B:320:LEU:HD13	2.41	0.51

Continued on next page...

Continued from previous page...

Atom-1	Atom-2	Interatomic distance (Å)	Clash overlap (Å)
1:A:163:ALA:O	1:A:167:LEU:HD13	2.11	0.50
1:B:151:PHE:O	1:B:193:LEU:HD12	2.12	0.50
1:C:263:LEU:C	1:C:263:LEU:HD23	2.32	0.50
1:D:201:ILE:HA	1:D:204:LEU:HD12	1.92	0.49
1:C:180:GLY:HA3	1:C:207:PRO:HG2	1.94	0.49
1:B:62:ARG:HG2	1:B:76:TYR:CE1	2.47	0.49
1:A:46:ILE:HB	1:A:47:PRO:HD3	1.94	0.49
1:A:190:HIS:O	1:A:194:GLN:HG2	2.13	0.49
1:C:126:LEU:HG	1:C:263:LEU:HD22	1.95	0.49
1:D:3:THR:N	1:D:4:PRO:HD2	2.28	0.49
1:B:177:ARG:NE	1:B:206:GLU:OE1	2.30	0.48
1:D:106:ALA:HA	1:D:109:VAL:HG22	1.94	0.48
1:D:10:GLU:OE2	1:D:15:ARG:HG2	2.12	0.48
1:B:3:THR:O	1:B:20:GLU:O	2.31	0.48
1:B:21:ALA:HB1	1:B:50:VAL:HG21	1.94	0.48
1:A:194:GLN:O	1:A:203:ARG:NH1	2.41	0.48
1:A:262:PHE:HD2	1:A:289:GLN:HG3	1.78	0.48
1:C:7:ARG:NE	1:C:20:GLU:OE2	2.30	0.48
1:D:137:ARG:HH11	1:D:137:ARG:HG2	1.78	0.48
1:D:40:TYR:CD2	1:D:221:HIS:HD2	2.32	0.48
1:B:107:LEU:HD12	2:B:401:BSU:H31	1.95	0.48
1:D:320:LEU:N	1:D:320:LEU:HD22	2.28	0.47
1:A:130:PRO:HG2	1:A:279:ALA:HB1	1.96	0.47
1:A:128:VAL:HG13	1:A:274:MET:CE	2.43	0.47
1:C:33:HIS:N	4:C:506:HOH:O	2.33	0.47
1:B:153:TYR:CE2	2:B:401:BSU:H121	2.49	0.47
1:D:263:LEU:HD23	1:D:263:LEU:C	2.35	0.47
1:A:156:TYR:OH	1:A:166:GLU:OE1	2.25	0.47
1:A:107:LEU:CD2	2:A:401:BSU:H131	2.45	0.47
1:A:105:GLY:O	1:A:109:VAL:HG13	2.15	0.46
1:A:118:ASP:OD2	1:A:119:ARG:HG2	2.15	0.46
1:D:62:ARG:NH1	1:D:75:ALA:O	2.48	0.46
1:A:174:THR:HG22	1:A:201:ILE:HG13	1.98	0.46
1:A:29:VAL:HG13	1:A:100:ILE:HD12	1.96	0.46
1:B:118:ASP:N	1:B:118:ASP:OD1	2.36	0.46
1:D:40:TYR:O	1:D:43:ARG:HD3	2.16	0.46
1:C:29:VAL:HG13	1:C:100:ILE:HD12	1.97	0.46
1:C:121:ALA:CB	1:C:320:LEU:HD23	2.46	0.46
1:C:129:PRO:HB3	1:C:262:PHE:CZ	2.51	0.46
1:A:128:VAL:HG13	1:A:274:MET:HE2	1.97	0.45
1:C:238:TYR:O	1:C:241:MET:HG3	2.15	0.45

Continued on next page...

Continued from previous page...

Atom-1	Atom-2	Interatomic distance (Å)	Clash overlap (Å)
1:A:164:ASP:OD2	1:A:164:ASP:N	2.47	0.45
1:D:100:ILE:HD13	1:D:311:LEU:HD13	1.99	0.45
1:D:46:ILE:N	1:D:47:PRO:HD2	2.31	0.45
1:D:61:GLN:O	1:D:64:TYR:HB2	2.16	0.45
1:B:318:LEU:HB3	1:B:320:LEU:HD13	1.97	0.45
1:D:77:ASP:OD2	1:D:243:ARG:NH1	2.49	0.45
1:C:16:LEU:HD23	1:C:67:SER:HB3	1.98	0.45
1:C:178:MET:HE3	2:C:401:BSU:H131	1.98	0.45
1:C:210:LEU:HD23	1:C:211:PRO:CD	2.45	0.45
1:D:174:THR:O	1:D:178:MET:HG3	2.16	0.45
1:A:213:TRP:CD1	1:A:302:GLU:HG2	2.52	0.45
1:D:206:GLU:OE2	1:D:207:PRO:HD2	2.17	0.45
1:C:121:ALA:HB1	1:C:320:LEU:HD23	1.99	0.45
1:A:278:ARG:HG2	1:A:281:GLU:OE2	2.17	0.44
1:B:15:ARG:HG2	1:B:68:SER:OG	2.17	0.44
1:C:304:PRO:HA	1:C:307:VAL:HG22	1.99	0.44
1:A:6:GLU:OE1	1:A:17:ARG:NE	2.49	0.44
1:B:173:ARG:HA	1:B:176:ARG:CZ	2.48	0.44
1:B:81:LEU:HD13	1:B:237:TRP:CH2	2.52	0.44
1:C:6:GLU:HA	1:C:18:LEU:O	2.16	0.44
1:A:62:ARG:HG2	1:A:76:TYR:CE1	2.52	0.44
1:B:31:LEU:HD23	1:B:100:ILE:HB	2.00	0.44
1:C:46:ILE:HB	1:C:47:PRO:HD3	1.99	0.44
1:D:38:LEU:HD21	4:D:545:HOH:O	2.17	0.44
1:A:303:ARG:N	1:A:304:PRO:CD	2.81	0.44
1:A:6:GLU:HA	1:A:18:LEU:O	2.17	0.44
1:B:275:ARG:HA	1:B:276:PRO:HD3	1.89	0.44
1:C:29:VAL:CG1	1:C:100:ILE:HD12	2.48	0.44
1:B:3:THR:O	1:B:5:SER:N	2.51	0.43
1:B:31:LEU:O	1:B:59:PRO:HD2	2.19	0.43
1:C:145:LEU:O	1:B:80:ARG:HD2	2.19	0.43
1:B:275:ARG:HH21	1:B:277:GLU:HB2	1.84	0.43
1:C:36:PRO:HD3	1:C:178:MET:CE	2.48	0.43
1:C:262:PHE:CE2	1:C:276:PRO:HB3	2.53	0.43
1:D:278:ARG:HD2	1:D:281:GLU:OE2	2.18	0.43
1:D:46:ILE:HB	1:D:47:PRO:CD	2.48	0.43
1:B:81:LEU:HD13	1:B:237:TRP:CZ3	2.54	0.43
1:B:316:ARG:HA	1:B:317:GLY:HA2	1.81	0.43
1:B:123:VAL:O	1:B:260:ALA:HA	2.18	0.42
1:B:180:GLY:HA3	1:B:207:PRO:HG3	2.00	0.42
1:C:312:ILE:HG23	1:C:316:ARG:HH21	1.83	0.42

Continued on next page...

Continued from previous page...

Atom-1	Atom-2	Interatomic distance (Å)	Clash overlap (Å)
1:D:137:ARG:O	1:D:140:GLU:HB2	2.19	0.42
1:B:263:LEU:HD23	1:B:263:LEU:C	2.39	0.42
1:D:22:GLY:HA2	1:D:50:VAL:HG13	2.02	0.42
1:B:110:TRP:CE3	1:B:110:TRP:HA	2.55	0.42
1:A:275:ARG:HB3	1:A:277:GLU:OE1	2.19	0.42
1:D:137:ARG:CG	1:D:137:ARG:HH11	2.33	0.41
1:B:40:TYR:O	1:B:43:ARG:HD3	2.19	0.41
1:C:307:VAL:O	1:C:311:LEU:HG	2.21	0.41
1:D:107:LEU:HD12	2:D:401:BSU:H131	2.02	0.41
1:A:213:TRP:NE1	1:A:302:GLU:HG2	2.36	0.41
1:B:282:VAL:O	1:B:284:VAL:HG13	2.20	0.41
1:B:176:ARG:CZ	1:B:206:GLU:OE2	2.68	0.41
1:B:78:ILE:N	1:B:244:ASN:OD1	2.44	0.41
1:C:106:ALA:O	1:C:109:VAL:HG22	2.21	0.41
1:A:158:GLN:O	1:A:160:PRO:HD3	2.21	0.41
1:B:28:LEU:HD22	1:B:92:ILE:HD11	2.02	0.41
1:C:46:ILE:HG12	1:C:56:VAL:HG11	2.02	0.41
1:D:42:TRP:O	1:D:46:ILE:HG13	2.21	0.41
1:B:263:LEU:HA	1:B:290:VAL:O	2.21	0.41
1:B:292:LEU:O	1:B:295:ALA:HB3	2.21	0.41
1:B:27:PRO:HB2	1:B:54:TYR:HD1	1.86	0.41
1:C:152:PHE:CE2	1:C:154:ILE:HB	2.56	0.40
1:C:62:ARG:HG2	1:C:76:TYR:CE1	2.56	0.40
1:D:99:PHE:CD1	1:D:99:PHE:N	2.89	0.40
1:A:120:VAL:O	1:A:120:VAL:HG23	2.20	0.40
1:A:175:MET:HE2	1:A:175:MET:HA	2.02	0.40

All (3) symmetry-related close contacts are listed below. The label for Atom-2 includes the symmetry operator and encoded unit-cell translations to be applied.

Atom-1	Atom-2	Interatomic distance (Å)	Clash overlap (Å)
4:A:544:HOH:O	4:D:546:HOH:O[2_545]	1.99	0.21
4:A:561:HOH:O	4:D:561:HOH:O[2_645]	2.12	0.08
4:B:513:HOH:O	4:D:520:HOH:O[2_644]	2.19	0.01

5.3 Torsion angles [i](#)

5.3.1 Protein backbone [i](#)

In the following table, the Percentiles column shows the percent Ramachandran outliers of the chain as a percentile score with respect to all X-ray entries followed by that with respect to entries of similar resolution.

The Analysed column shows the number of residues for which the backbone conformation was analysed, and the total number of residues.

Mol	Chain	Analysed	Favoured	Allowed	Outliers	Percentiles	
1	A	317/325 (98%)	307 (97%)	8 (2%)	2 (1%)	30	22
1	B	317/325 (98%)	305 (96%)	11 (4%)	1 (0%)	46	41
1	C	317/325 (98%)	307 (97%)	8 (2%)	2 (1%)	30	22
1	D	318/325 (98%)	313 (98%)	4 (1%)	1 (0%)	46	41
All	All	1269/1300 (98%)	1232 (97%)	31 (2%)	6 (0%)	34	26

All (6) Ramachandran outliers are listed below:

Mol	Chain	Res	Type
1	A	103	ASP
1	C	103	ASP
1	C	36	PRO
1	B	36	PRO
1	D	36	PRO
1	A	36	PRO

5.3.2 Protein sidechains [i](#)

In the following table, the Percentiles column shows the percent sidechain outliers of the chain as a percentile score with respect to all X-ray entries followed by that with respect to entries of similar resolution.

The Analysed column shows the number of residues for which the sidechain conformation was analysed, and the total number of residues.

Mol	Chain	Analysed	Rotameric	Outliers	Percentiles	
1	A	247/250 (99%)	243 (98%)	4 (2%)	70	73
1	B	247/250 (99%)	242 (98%)	5 (2%)	63	65
1	C	247/250 (99%)	241 (98%)	6 (2%)	57	58
1	D	248/250 (99%)	239 (96%)	9 (4%)	42	39

Continued on next page...

Continued from previous page...

Mol	Chain	Analysed	Rotameric	Outliers	Percentiles
All	All	989/1000 (99%)	965 (98%)	24 (2%)	57 58

All (24) residues with a non-rotameric sidechain are listed below:

Mol	Chain	Res	Type
1	C	3	THR
1	C	78	ILE
1	C	80	ARG
1	C	184	SER
1	C	194	GLN
1	C	208	GLU
1	A	8	SER
1	A	164	ASP
1	A	278	ARG
1	A	306	GLU
1	B	134	SER
1	B	149	ASP
1	B	178	MET
1	B	261	LEU
1	B	293	ASP
1	D	24	ARG
1	D	107	LEU
1	D	137	ARG
1	D	164	ASP
1	D	182	LEU
1	D	263	LEU
1	D	278	ARG
1	D	288	ARG
1	D	316	ARG

Some sidechains can be flipped to improve hydrogen bonding and reduce clashes. All (10) such sidechains are listed below:

Mol	Chain	Res	Type
1	C	240	ASN
1	A	44	HIS
1	B	44	HIS
1	B	150	ASN
1	B	221	HIS
1	B	308	ASN
1	D	102	HIS
1	D	190	HIS

Continued on next page...

Continued from previous page...

Mol	Chain	Res	Type
1	D	194	GLN
1	D	221	HIS

5.3.3 RNA ⓘ

There are no RNA molecules in this entry.

5.4 Non-standard residues in protein, DNA, RNA chains ⓘ

There are no non-standard protein/DNA/RNA residues in this entry.

5.5 Carbohydrates ⓘ

There are no carbohydrates in this entry.

5.6 Ligand geometry ⓘ

Of 5 ligands modelled in this entry, 1 is monoatomic - leaving 4 for Mogul analysis.

In the following table, the Counts columns list the number of bonds (or angles) for which Mogul statistics could be retrieved, the number of bonds (or angles) that are observed in the model and the number of bonds (or angles) that are defined in the chemical component dictionary. The Link column lists molecule types, if any, to which the group is linked. The Z score for a bond length (or angle) is the number of standard deviations the observed value is removed from the expected value. A bond length (or angle) with $|Z| > 2$ is considered an outlier worth inspection. RMSZ is the root-mean-square of all Z scores of the bond lengths (or angles).

Mol	Type	Chain	Res	Link	Bond lengths			Bond angles		
					Counts	RMSZ	$\# Z > 2$	Counts	RMSZ	$\# Z > 2$
2	BSU	A	401	-	17,17,17	0.86	1 (5%)	21,21,21	1.16	1 (4%)
2	BSU	B	401	-	17,17,17	0.80	1 (5%)	21,21,21	1.44	3 (14%)
2	BSU	C	401	-	17,17,17	0.76	0	21,21,21	1.40	5 (23%)
2	BSU	D	401	-	17,17,17	0.79	0	21,21,21	1.30	4 (19%)

In the following table, the Chirals column lists the number of chiral outliers, the number of chiral centers analysed, the number of these observed in the model and the number defined in the chemical component dictionary. Similar counts are reported in the Torsion and Rings columns. '-' means no outliers of that kind were identified.

Mol	Type	Chain	Res	Link	Chirals	Torsions	Rings
2	BSU	A	401	-	-	0/8/8/8	0/2/2/2
2	BSU	B	401	-	-	0/8/8/8	0/2/2/2
2	BSU	C	401	-	-	0/8/8/8	0/2/2/2
2	BSU	D	401	-	-	0/8/8/8	0/2/2/2

All (2) bond length outliers are listed below:

Mol	Chain	Res	Type	Atoms	Z	Observed(Å)	Ideal(Å)
2	A	401	BSU	C8-N9	2.12	1.41	1.37
2	B	401	BSU	C8-N9	2.19	1.41	1.37

All (13) bond angle outliers are listed below:

Mol	Chain	Res	Type	Atoms	Z	Observed(°)	Ideal(°)
2	C	401	BSU	C5-N7-C8	-3.25	120.23	126.65
2	B	401	BSU	C5-N7-C8	-2.98	120.75	126.65
2	B	401	BSU	C10-N9-C8	-2.66	121.38	126.65
2	D	401	BSU	C5-N7-C8	-2.44	121.82	126.65
2	C	401	BSU	C10-N9-C8	-2.32	122.06	126.65
2	C	401	BSU	O11-C8-N7	-2.21	120.21	123.59
2	D	401	BSU	C10-N9-C8	-2.00	122.68	126.65
2	A	401	BSU	C12-C10-C16	2.06	121.92	119.06
2	D	401	BSU	C6-C5-C4	2.06	121.93	119.06
2	C	401	BSU	C12-C10-C16	2.10	121.98	119.06
2	C	401	BSU	N9-C8-N7	2.55	116.54	112.48
2	D	401	BSU	C12-C10-C16	2.63	122.71	119.06
2	B	401	BSU	N9-C8-N7	2.76	116.86	112.48

There are no chirality outliers.

There are no torsion outliers.

There are no ring outliers.

4 monomers are involved in 6 short contacts:

Mol	Chain	Res	Type	Clashes	Symm-Clashes
2	A	401	BSU	2	0
2	B	401	BSU	2	0
2	C	401	BSU	1	0
2	D	401	BSU	1	0

5.7 Other polymers [i](#)

There are no such residues in this entry.

5.8 Polymer linkage issues [i](#)

There are no chain breaks in this entry.

6 Fit of model and data [i](#)

6.1 Protein, DNA and RNA chains [i](#)

In the following table, the column labelled ‘#RSRZ> 2’ contains the number (and percentage) of RSRZ outliers, followed by percent RSRZ outliers for the chain as percentile scores relative to all X-ray entries and entries of similar resolution. The OWAB column contains the minimum, median, 95th percentile and maximum values of the occupancy-weighted average B-factor per residue. The column labelled ‘Q< 0.9’ lists the number of (and percentage) of residues with an average occupancy less than 0.9.

Mol	Chain	Analysed	<RSRZ>	#RSRZ>2	OWAB(Å ²)	Q<0.9
1	A	319/325 (98%)	-0.18	1 (0%) 94 94	10, 20, 34, 48	0
1	B	319/325 (98%)	-0.18	2 (0%) 90 90	8, 21, 36, 64	0
1	C	319/325 (98%)	-0.18	3 (0%) 85 86	10, 21, 38, 68	0
1	D	319/325 (98%)	-0.26	1 (0%) 94 94	10, 19, 34, 50	0
All	All	1276/1300 (98%)	-0.20	7 (0%) 91 92	8, 20, 35, 68	0

All (7) RSRZ outliers are listed below:

Mol	Chain	Res	Type	RSRZ
1	B	320	LEU	4.9
1	C	207	PRO	3.1
1	D	3	THR	3.1
1	C	252	ALA	2.8
1	A	207	PRO	2.5
1	C	251	LEU	2.3
1	B	3	THR	2.0

6.2 Non-standard residues in protein, DNA, RNA chains [i](#)

There are no non-standard protein/DNA/RNA residues in this entry.

6.3 Carbohydrates [i](#)

There are no carbohydrates in this entry.

6.4 Ligands [i](#)

In the following table, the Atoms column lists the number of modelled atoms in the group and the number defined in the chemical component dictionary. LLDF column lists the quality of electron density of the group with respect to its neighbouring residues in protein, DNA or RNA chains. The B-factors column lists the minimum, median, 95th percentile and maximum values of B factors of atoms in the group. The column labelled 'Q< 0.9' lists the number of atoms with occupancy less than 0.9.

Mol	Type	Chain	Res	Atoms	RSCC	RSR	LLDF	B-factors(\AA^2)	Q<0.9
2	BSU	D	401	16/16	0.94	0.13	1.65	7,14,28,35	0
2	BSU	B	401	16/16	0.92	0.14	0.73	6,16,21,23	0
2	BSU	C	401	16/16	0.93	0.13	0.51	16,19,36,41	0
2	BSU	A	401	16/16	0.94	0.12	0.19	9,17,24,26	0
3	NA	D	402	1/1	0.98	0.06	-2.62	16,16,16,16	0

6.5 Other polymers [i](#)

There are no such residues in this entry.