



Full wwPDB X-ray Structure Validation Report ⓘ

Feb 1, 2016 – 07:59 AM GMT

PDB ID : 3CX7
Title : Crystal Structure of PDZRhGEF rgRGS Domain in a Complex with Galpha-13 Bound to GDP-AIF4
Authors : Sprang, S.R.; Chen, Z.
Deposited on : 2008-04-23
Resolution : 2.25 Å(reported)

This is a Full wwPDB X-ray Structure Validation Report for a publicly released PDB entry.
We welcome your comments at validation@mail.wwpdb.org
A user guide is available at
<http://wwpdb.org/validation/2016/XrayValidationReportHelp>
with specific help available everywhere you see the ⓘ symbol.

The following versions of software and data (see [references ⓘ](#)) were used in the production of this report:

MolProbity : 4.02b-467
Mogul : 1.7 (RC4), CSD as536be (2015)
Xtriage (Phenix) : 1.9-1692
EDS : rb-20026688
Percentile statistics : 20151230.v01 (using entries in the PDB archive December 30th 2015)
Refmac : 5.8.0135
CCP4 : 6.5.0
Ideal geometry (proteins) : Engh & Huber (2001)
Ideal geometry (DNA, RNA) : Parkinson et al. (1996)
Validation Pipeline (wwPDB-VP) : trunk26865

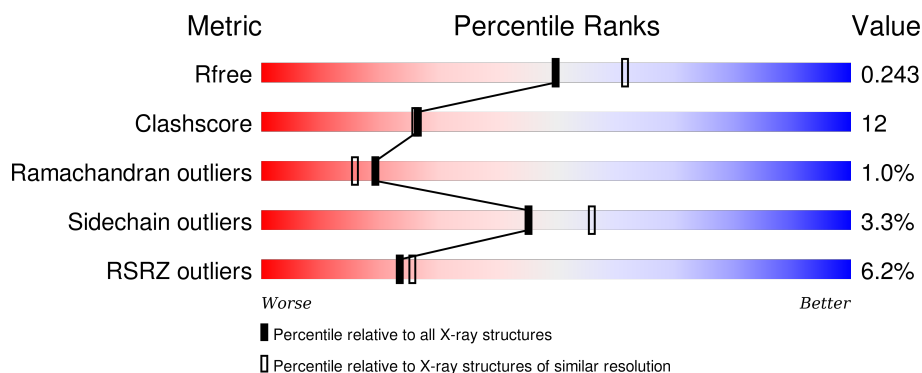
1 Overall quality at a glance

The following experimental techniques were used to determine the structure:

X-RAY DIFFRACTION

The reported resolution of this entry is 2.25 Å.

Percentile scores (ranging between 0-100) for global validation metrics of the entry are shown in the following graphic. The table shows the number of entries on which the scores are based.



Metric	Whole archive (#Entries)	Similar resolution (#Entries, resolution range(Å))
R_{free}	91344	1640 (2.28-2.24)
Clashscore	102246	1095 (2.26-2.26)
Ramachandran outliers	100387	1063 (2.26-2.26)
Sidechain outliers	100360	1063 (2.26-2.26)
RSRZ outliers	91569	1647 (2.28-2.24)

The table below summarises the geometric issues observed across the polymeric chains and their fit to the electron density. The red, orange, yellow and green segments on the lower bar indicate the fraction of residues that contain outliers for ≥ 3 , 2, 1 and 0 types of geometric quality criteria. A grey segment represents the fraction of residues that are not modelled. The numeric value for each fraction is indicated below the corresponding segment, with a dot representing fractions $\leq 5\%$. The upper red bar (where present) indicates the fraction of residues that have poor fit to the electron density. The numeric value is given above the bar.

Mol	Chain	Length	Quality of chain
1	A	338	
2	B	203	

The following table lists non-polymeric compounds, carbohydrate monomers and non-standard residues in protein, DNA, RNA chains that are outliers for geometric or electron-density-fit criteria:

Mol	Type	Chain	Res	Chirality	Geometry	Clashes	Electron density
3	MG	A	378	-	-	-	X
4	ALF	A	775	-	-	-	X

2 Entry composition

There are 6 unique types of molecules in this entry. The entry contains 4330 atoms, of which 0 are hydrogens and 0 are deuteriums.

In the tables below, the ZeroOcc column contains the number of atoms modelled with zero occupancy, the AltConf column contains the number of residues with at least one atom in alternate conformation and the Trace column contains the number of residues modelled with at most 2 atoms.

- Molecule 1 is a protein called Guanine Nucleotide-Binding Protein Galpha 13.

Mol	Chain	Residues	Atoms					ZeroOcc	AltConf	Trace
1	A	319	Total	C	N	O	S	0	0	0
			2635	1678	467	480	10			

There is a discrepancy between the modelled and reference sequences:

Chain	Residue	Modelled	Actual	Comment	Reference
A	40	GLY	-	EXPRESSION TAG	UNP P27601

- Molecule 2 is a protein called Glutamate Transporter Associated Protein 48.

Mol	Chain	Residues	Atoms					ZeroOcc	AltConf	Trace
2	B	193	Total	C	N	O	S	0	0	0
			1547	977	260	303	7			

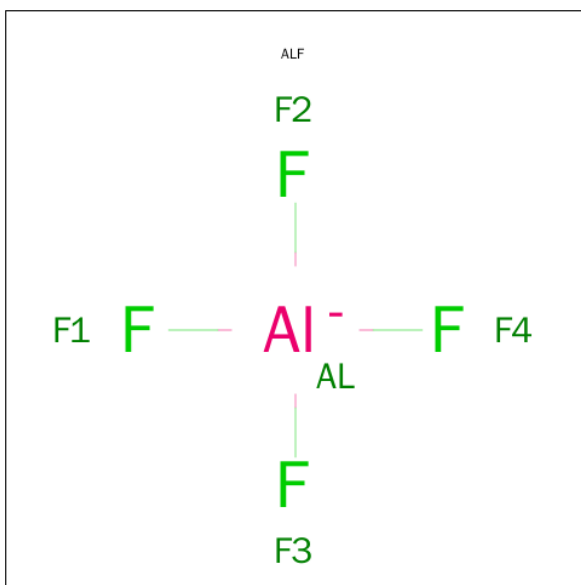
There is a discrepancy between the modelled and reference sequences:

Chain	Residue	Modelled	Actual	Comment	Reference
B	306	GLY	-	EXPRESSION TAG	UNP Q9ES67

- Molecule 3 is MAGNESIUM ION (three-letter code: MG) (formula: Mg).

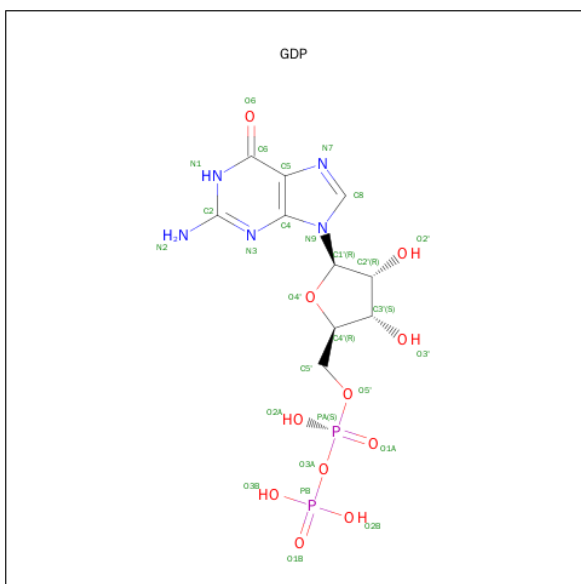
Mol	Chain	Residues	Atoms		ZeroOcc	AltConf
3	A	1	Total	Mg	0	0
			1	1		

- Molecule 4 is TETRAFLUOROALUMINATE ION (three-letter code: ALF) (formula: AlF_4).



Mol	Chain	Residues	Atoms			ZeroOcc	AltConf
4	A	1	Total	Al	F	0	0
			5	1	4		

- Molecule 5 is GUANOSINE-5'-DIPHOSPHATE (three-letter code: GDP) (formula: $C_{10}H_{15}N_5O_{11}P_2$).



Mol	Chain	Residues	Atoms					ZeroOcc	AltConf
5	A	1	Total	C	N	O	P	0	0
			28	10	5	11	2		

- Molecule 6 is water.

Mol	Chain	Residues	Atoms		ZeroOcc	AltConf
6	A	93	Total 93	O 93	0	0
6	B	21	Total 21	O 21	0	0

4 Data and refinement statistics

Property	Value	Source
Space group	P 21 21 21	Depositor
Cell constants a, b, c, α , β , γ	57.95Å 66.37Å 151.19Å 90.00° 90.00° 90.00°	Depositor
Resolution (Å)	45.00 – 2.25 45.99 – 2.25	Depositor EDS
% Data completeness (in resolution range)	93.5 (45.00-2.25) 93.3 (45.99-2.25)	Depositor EDS
R_{merge}	(Not available)	Depositor
R_{sym}	0.09	Depositor
$\langle I/\sigma(I) \rangle$ ¹	2.21 (at 2.24Å)	Xtriage
Refinement program	CNS	Depositor
R, R_{free}	0.229 , 0.269 0.231 , 0.243	Depositor DCC
R_{free} test set	1345 reflections (5.32%)	DCC
Wilson B-factor (Å ²)	34.8	Xtriage
Anisotropy	0.304	Xtriage
Bulk solvent k_{sol} (e/Å ³), B_{sol} (Å ²)	0.32 , 44.2	EDS
Estimated twinning fraction	No twinning to report.	Xtriage
L-test for twinning ²	$\langle L \rangle = 0.48$, $\langle L^2 \rangle = 0.32$	Xtriage
Outliers	0 of 26612 reflections	Xtriage
F_o, F_c correlation	0.93	EDS
Total number of atoms	4330	wwPDB-VP
Average B, all atoms (Å ²)	42.0	wwPDB-VP

Xtriage's analysis on translational NCS is as follows: *The largest off-origin peak in the Patterson function is 5.35% of the height of the origin peak. No significant pseudotranslation is detected.*

¹Intensities estimated from amplitudes.

²Theoretical values of $\langle |L| \rangle$, $\langle L^2 \rangle$ for acentric reflections are 0.5, 0.375 respectively for untwinned datasets, and 0.333, 0.2 for perfectly twinned datasets.

5 Model quality

5.1 Standard geometry

Bond lengths and bond angles in the following residue types are not validated in this section: GDP, ALF, MG

The Z score for a bond length (or angle) is the number of standard deviations the observed value is removed from the expected value. A bond length (or angle) with $|Z| > 5$ is considered an outlier worth inspection. RMSZ is the root-mean-square of all Z scores of the bond lengths (or angles).

Mol	Chain	Bond lengths		Bond angles	
		RMSZ	# Z >5	RMSZ	# Z >5
1	A	0.38	0/2687	0.60	0/3618
2	B	0.31	0/1574	0.57	0/2127
All	All	0.36	0/4261	0.59	0/5745

There are no bond length outliers.

There are no bond angle outliers.

There are no chirality outliers.

There are no planarity outliers.

5.2 Too-close contacts

In the following table, the Non-H and H(model) columns list the number of non-hydrogen atoms and hydrogen atoms in the chain respectively. The H(added) column lists the number of hydrogen atoms added and optimized by MolProbity. The Clashes column lists the number of clashes within the asymmetric unit, whereas Symm-Clashes lists symmetry related clashes.

Mol	Chain	Non-H	H(model)	H(added)	Clashes	Symm-Clashes
1	A	2635	0	2632	54	0
2	B	1547	0	1524	56	0
3	A	1	0	0	0	0
4	A	5	0	0	0	0
5	A	28	0	12	0	0
6	A	93	0	0	0	0
6	B	21	0	0	2	0
All	All	4330	0	4168	102	0

The all-atom clashscore is defined as the number of clashes found per 1000 atoms (including hydrogen atoms). The all-atom clashscore for this structure is 12.

All (102) close contacts within the same asymmetric unit are listed below, sorted by their clash magnitude.

Atom-1	Atom-2	Interatomic distance (Å)	Clash overlap (Å)
1:A:278:ASN:HB2	2:B:351:GLN:HE22	1.50	0.77
1:A:302:VAL:HG23	1:A:303:VAL:HG23	1.67	0.75
2:B:468:GLU:O	2:B:469:LYS:HB3	1.87	0.75
1:A:248:SER:O	1:A:251:GLU:HG2	1.89	0.71
1:A:234:PHE:HA	1:A:237:PHE:CD1	2.27	0.69
1:A:146:LEU:HB3	1:A:147:PRO:HD3	1.75	0.67
2:B:466:MET:HG3	2:B:470:GLN:HE21	1.59	0.67
1:A:259:ASP:O	1:A:261:GLN:N	2.28	0.67
2:B:477:ILE:H	2:B:477:ILE:HD12	1.59	0.66
1:A:172:GLU:HG3	1:A:295:LEU:HD13	1.77	0.66
2:B:400:LEU:HD11	2:B:420:GLU:HB2	1.77	0.65
1:A:234:PHE:HA	1:A:237:PHE:HD1	1.62	0.65
2:B:338:PRO:O	2:B:342:VAL:HG23	1.97	0.65
2:B:466:MET:HE2	2:B:470:GLN:HG3	1.80	0.64
2:B:307:LEU:N	2:B:307:LEU:HD22	2.13	0.64
2:B:363:SER:HB3	2:B:418:LEU:HD11	1.79	0.63
1:A:97:ARG:HD2	1:A:122:LEU:O	1.99	0.63
1:A:71:ILE:HG23	1:A:356:ARG:NH1	2.14	0.62
1:A:172:GLU:HG3	1:A:295:LEU:CD1	2.29	0.62
1:A:259:ASP:OD1	1:A:259:ASP:O	2.18	0.61
2:B:489:MET:O	2:B:493:VAL:HG23	2.00	0.61
1:A:327:VAL:HG12	1:A:331:ARG:HH12	1.65	0.61
1:A:313:GLU:HG2	1:A:313:GLU:O	2.04	0.57
1:A:349:ALA:HA	1:A:355:ILE:HD11	1.87	0.57
2:B:363:SER:O	2:B:367:GLN:HG2	2.05	0.57
1:A:259:ASP:O	1:A:259:ASP:CG	2.42	0.56
2:B:477:ILE:HD12	2:B:477:ILE:N	2.20	0.56
2:B:363:SER:HB3	2:B:418:LEU:CD1	2.35	0.56
2:B:367:GLN:HE21	2:B:418:LEU:HD12	1.71	0.56
1:A:85:ARG:HB3	1:A:86:PRO:HD3	1.87	0.56
1:A:47:ARG:O	1:A:47:ARG:HD3	2.05	0.55
2:B:444:LEU:O	2:B:447:LEU:HB2	2.06	0.55
2:B:356:PRO:HB3	2:B:425:VAL:HG13	1.89	0.54
2:B:375:ARG:O	2:B:379:LYS:HG2	2.08	0.54
2:B:416:ASN:HB2	6:B:102:HOH:O	2.07	0.54
1:A:78:GLN:O	1:A:82:GLU:HG3	2.08	0.53
1:A:96:MET:HG3	1:A:122:LEU:HD22	1.91	0.53
2:B:347:TYR:CE1	2:B:351:GLN:HG3	2.44	0.53
1:A:327:VAL:CG1	1:A:331:ARG:HH12	2.21	0.53
2:B:398:GLU:HG3	6:B:70:HOH:O	2.09	0.52

Continued on next page...

Continued from previous page...

Atom-1	Atom-2	Interatomic distance (Å)	Clash overlap (Å)
2:B:459:ASP:HB3	2:B:462:ARG:HB3	1.92	0.52
1:A:48:LEU:HD12	1:A:217:PRO:O	2.11	0.51
1:A:176:TYR:CD2	1:A:198:LEU:HD13	2.45	0.51
1:A:278:ASN:CB	2:B:351:GLN:HE22	2.21	0.51
1:A:230:ARG:HG2	1:A:233:TRP:CZ2	2.46	0.51
1:A:357:LEU:HD12	1:A:358:VAL:N	2.26	0.50
2:B:307:LEU:O	2:B:308:ILE:HB	2.12	0.50
2:B:413:ASP:OD2	2:B:415:ARG:HD2	2.11	0.49
2:B:388:LYS:O	2:B:393:ARG:NH2	2.45	0.49
1:A:274:THR:HG22	2:B:439:LYS:NZ	2.27	0.49
2:B:427:LEU:HD13	2:B:427:LEU:C	2.33	0.49
2:B:375:ARG:NH2	2:B:411:ASN:HB3	2.28	0.49
2:B:341:LEU:HD23	2:B:497:MET:HE3	1.94	0.49
1:A:274:THR:HG22	2:B:439:LYS:HZ3	1.78	0.49
1:A:231:LYS:O	1:A:234:PHE:HD2	1.96	0.48
2:B:404:ILE:HG12	2:B:417:VAL:HG23	1.95	0.48
2:B:471:LEU:HD22	2:B:497:MET:HG3	1.95	0.47
2:B:479:SER:C	2:B:481:TYR:H	2.17	0.47
1:A:243:ILE:HB	1:A:286:ILE:HD13	1.97	0.47
1:A:122:LEU:HD13	1:A:152:LEU:CD1	2.45	0.47
1:A:278:ASN:ND2	2:B:351:GLN:NE2	2.63	0.46
2:B:341:LEU:HD23	2:B:497:MET:CE	2.46	0.46
2:B:345:LEU:O	2:B:349:LEU:HB2	2.15	0.46
2:B:359:PHE:HB2	2:B:385:PHE:CD2	2.50	0.46
2:B:466:MET:O	2:B:468:GLU:O	2.35	0.45
1:A:231:LYS:O	1:A:234:PHE:CD2	2.69	0.45
2:B:307:LEU:O	2:B:308:ILE:CB	2.65	0.45
2:B:403:GLU:CD	2:B:417:VAL:HG11	2.37	0.44
2:B:453:LEU:HA	2:B:456:LEU:HD12	1.98	0.44
1:A:306:LYS:HE3	1:A:310:LEU:O	2.17	0.44
1:A:84:PHE:CD1	1:A:196:ILE:HG13	2.52	0.44
1:A:347:THR:HG22	1:A:358:VAL:HG21	1.98	0.44
1:A:214:LYS:O	1:A:215:ASN:HB2	2.18	0.44
1:A:248:SER:OG	1:A:292:LYS:HD2	2.17	0.44
1:A:236:CYS:C	1:A:238:ASP:H	2.22	0.44
2:B:335:LYS:HE3	2:B:364:GLU:OE2	2.18	0.43
1:A:232:ARG:HH11	1:A:232:ARG:HG2	1.82	0.43
2:B:323:GLU:HG3	2:B:326:ILE:HD12	2.01	0.43
2:B:338:PRO:HG2	2:B:463:GLU:HG2	1.99	0.43
2:B:307:LEU:HB2	2:B:308:ILE:H	1.64	0.43
1:A:270:ASN:O	1:A:274:THR:HG23	2.19	0.43

Continued on next page...

Continued from previous page...

Atom-1	Atom-2	Interatomic distance (Å)	Clash overlap (Å)
2:B:370:ASN:HA	2:B:371:PRO:HD3	1.91	0.43
1:A:327:VAL:HG12	1:A:331:ARG:NH1	2.32	0.43
2:B:466:MET:CE	2:B:470:GLN:HG3	2.46	0.42
1:A:278:ASN:CB	2:B:351:GLN:NE2	2.82	0.42
1:A:278:ASN:HB2	2:B:351:GLN:NE2	2.27	0.42
1:A:184:LEU:HD22	1:A:189:TYR:CZ	2.54	0.42
2:B:412:GLU:O	2:B:414:PRO:HD3	2.20	0.42
1:A:364:ASP:O	1:A:368:HIS:CD2	2.73	0.42
2:B:342:VAL:HG11	2:B:470:GLN:HB3	2.02	0.42
2:B:487:ALA:N	2:B:488:PRO:HD2	2.35	0.42
1:A:165:ARG:HA	1:A:168:PHE:CE2	2.55	0.42
1:A:279:ARG:O	2:B:480:LYS:HE2	2.19	0.41
1:A:357:LEU:HD12	1:A:357:LEU:C	2.41	0.41
1:A:270:ASN:O	1:A:274:THR:CG2	2.68	0.41
1:A:230:ARG:HG2	1:A:233:TRP:CE2	2.55	0.41
1:A:236:CYS:O	1:A:238:ASP:N	2.54	0.41
2:B:416:ASN:HA	2:B:416:ASN:HD22	1.62	0.40
1:A:181:LEU:HD23	1:A:181:LEU:HA	1.87	0.40
2:B:467:ALA:HB3	2:B:502:ILE:HD12	2.03	0.40
2:B:363:SER:CB	2:B:418:LEU:HD11	2.47	0.40
1:A:232:ARG:NH1	1:A:232:ARG:HG2	2.36	0.40

There are no symmetry-related clashes.

5.3 Torsion angles ⓘ

5.3.1 Protein backbone ⓘ

In the following table, the Percentiles column shows the percent Ramachandran outliers of the chain as a percentile score with respect to all X-ray entries followed by that with respect to entries of similar resolution.

The Analysed column shows the number of residues for which the backbone conformation was analysed, and the total number of residues.

Mol	Chain	Analysed	Favoured	Allowed	Outliers	Percentiles	
1	A	315/338 (93%)	301 (96%)	11 (4%)	3 (1%)	19	16
2	B	189/203 (93%)	173 (92%)	14 (7%)	2 (1%)	17	13
All	All	504/541 (93%)	474 (94%)	25 (5%)	5 (1%)	19	16

All (5) Ramachandran outliers are listed below:

Mol	Chain	Res	Type
1	A	260	ARG
1	A	237	PHE
2	B	308	ILE
1	A	130	PRO
2	B	458	GLY

5.3.2 Protein sidechains ⓘ

In the following table, the Percentiles column shows the percent sidechain outliers of the chain as a percentile score with respect to all X-ray entries followed by that with respect to entries of similar resolution.

The Analysed column shows the number of residues for which the sidechain conformation was analysed, and the total number of residues.

Mol	Chain	Analysed	Rotameric	Outliers	Percentiles	
1	A	291/309 (94%)	283 (97%)	8 (3%)	52	63
2	B	170/179 (95%)	163 (96%)	7 (4%)	37	44
All	All	461/488 (94%)	446 (97%)	15 (3%)	45	56

All (15) residues with a non-rotameric sidechain are listed below:

Mol	Chain	Res	Type
1	A	65	LEU
1	A	99	LEU
1	A	114	LYS
1	A	236	CYS
1	A	274	THR
1	A	311	GLU
1	A	320	ARG
1	A	357	LEU
2	B	307	LEU
2	B	323	GLU
2	B	349	LEU
2	B	447	LEU
2	B	451	ASN
2	B	457	ASP
2	B	476	ASP

Some sidechains can be flipped to improve hydrogen bonding and reduce clashes. All (12) such sidechains are listed below:

Mol	Chain	Res	Type
1	A	78	GLN
1	A	144	GLN
1	A	160	ASN
1	A	323	GLN
1	A	368	HIS
2	B	351	GLN
2	B	367	GLN
2	B	383	ASN
2	B	416	ASN
2	B	430	GLN
2	B	434	ASN
2	B	470	GLN

5.3.3 RNA [i](#)

There are no RNA molecules in this entry.

5.4 Non-standard residues in protein, DNA, RNA chains [i](#)

There are no non-standard protein/DNA/RNA residues in this entry.

5.5 Carbohydrates [i](#)

There are no carbohydrates in this entry.

5.6 Ligand geometry [i](#)

Of 3 ligands modelled in this entry, 1 is monoatomic - leaving 2 for Mogul analysis.

In the following table, the Counts columns list the number of bonds (or angles) for which Mogul statistics could be retrieved, the number of bonds (or angles) that are observed in the model and the number of bonds (or angles) that are defined in the chemical component dictionary. The Link column lists molecule types, if any, to which the group is linked. The Z score for a bond length (or angle) is the number of standard deviations the observed value is removed from the expected value. A bond length (or angle) with $|Z| > 2$ is considered an outlier worth inspection. RMSZ is the root-mean-square of all Z scores of the bond lengths (or angles).

Mol	Type	Chain	Res	Link	Bond lengths			Bond angles		
					Counts	RMSZ	$\# Z > 2$	Counts	RMSZ	$\# Z > 2$
4	ALF	A	775	-	0,4,4	0.00	-	0,6,6	0.00	-
5	GDP	A	875	3	23,30,30	1.90	5 (21%)	30,47,47	2.15	7 (23%)

In the following table, the Chirals column lists the number of chiral outliers, the number of chiral centers analysed, the number of these observed in the model and the number defined in the chemical component dictionary. Similar counts are reported in the Torsion and Rings columns. '-' means no outliers of that kind were identified.

Mol	Type	Chain	Res	Link	Chirals	Torsions	Rings
4	ALF	A	775	-	-	0/0/0/0	0/0/0/0
5	GDP	A	875	3	-	0/12/32/32	0/3/3/3

All (5) bond length outliers are listed below:

Mol	Chain	Res	Type	Atoms	Z	Observed(Å)	Ideal(Å)
5	A	875	GDP	PB-O2B	-2.29	1.46	1.54
5	A	875	GDP	C4-N3	2.73	1.40	1.35
5	A	875	GDP	O4'-C1'	3.26	1.45	1.41
5	A	875	GDP	C5-C4	4.37	1.50	1.40
5	A	875	GDP	C6-C5	4.42	1.50	1.41

All (7) bond angle outliers are listed below:

Mol	Chain	Res	Type	Atoms	Z	Observed(°)	Ideal(°)
5	A	875	GDP	C6-C5-C4	-5.11	114.79	120.90
5	A	875	GDP	C5-C6-N1	-4.59	117.31	123.59
5	A	875	GDP	C1'-N9-C4	-3.37	121.86	126.94
5	A	875	GDP	C2'-C1'-N9	-2.92	109.83	114.29
5	A	875	GDP	N3-C2-N1	-2.80	123.18	127.44
5	A	875	GDP	O4'-C1'-N9	-2.67	102.52	108.10
5	A	875	GDP	C6-N1-C2	6.12	124.44	115.94

There are no chirality outliers.

There are no torsion outliers.

There are no ring outliers.

No monomer is involved in short contacts.

5.7 Other polymers

There are no such residues in this entry.

5.8 Polymer linkage issues

There are no chain breaks in this entry.

6 Fit of model and data ⓘ

6.1 Protein, DNA and RNA chains ⓘ

In the following table, the column labelled ‘#RSRZ> 2’ contains the number (and percentage) of RSRZ outliers, followed by percent RSRZ outliers for the chain as percentile scores relative to all X-ray entries and entries of similar resolution. The OWAB column contains the minimum, median, 95th percentile and maximum values of the occupancy-weighted average B-factor per residue. The column labelled ‘Q< 0.9’ lists the number of (and percentage) of residues with an average occupancy less than 0.9.

Mol	Chain	Analysed	<RSRZ>	#RSRZ>2	OWAB(Å ²)	Q<0.9
1	A	319/338 (94%)	0.02	6 (1%) 70 74	17, 33, 55, 77	0
2	B	193/203 (95%)	0.67	26 (13%) 4 4	24, 55, 80, 88	0
All	All	512/541 (94%)	0.27	32 (6%) 23 25	17, 38, 76, 88	0

All (32) RSRZ outliers are listed below:

Mol	Chain	Res	Type	RSRZ
2	B	467	ALA	4.4
1	A	238	ASP	3.9
2	B	314	ASP	3.8
2	B	373	ASP	3.8
2	B	458	GLY	3.6
2	B	461	LEU	3.6
2	B	411	ASN	3.3
2	B	455	GLY	3.3
2	B	412	GLU	3.1
2	B	456	LEU	3.1
1	A	237	PHE	3.0
2	B	484	ASP	2.9
2	B	465	GLN	2.8
2	B	408	LEU	2.8
2	B	462	ARG	2.8
2	B	372	LYS	2.7
2	B	374	SER	2.7
2	B	371	PRO	2.7
1	A	310	LEU	2.6
2	B	307	LEU	2.6
2	B	457	ASP	2.5
2	B	413	ASP	2.5
2	B	332	GLU	2.5
2	B	375	ARG	2.4

Continued on next page...

Continued from previous page...

Mol	Chain	Res	Type	RSRZ
2	B	482	GLU	2.3
1	A	234	PHE	2.3
2	B	370	ASN	2.2
1	A	47	ARG	2.2
2	B	501	GLY	2.1
2	B	476	ASP	2.1
1	A	342	LEU	2.0
2	B	468	GLU	2.0

6.2 Non-standard residues in protein, DNA, RNA chains [i](#)

There are no non-standard protein/DNA/RNA residues in this entry.

6.3 Carbohydrates [i](#)

There are no carbohydrates in this entry.

6.4 Ligands [i](#)

In the following table, the Atoms column lists the number of modelled atoms in the group and the number defined in the chemical component dictionary. LLDF column lists the quality of electron density of the group with respect to its neighbouring residues in protein, DNA or RNA chains. The B-factors column lists the minimum, median, 95th percentile and maximum values of B factors of atoms in the group. The column labelled 'Q< 0.9' lists the number of atoms with occupancy less than 0.9.

Mol	Type	Chain	Res	Atoms	RSCC	RSR	LLDF	B-factors(Å ²)	Q<0.9
3	MG	A	378	1/1	0.94	0.28	6.37	27,27,27,27	0
4	ALF	A	775	5/5	0.93	0.28	5.58	41,44,47,48	0
5	GDP	A	875	28/28	0.98	0.16	0.95	18,25,27,29	0

6.5 Other polymers [i](#)

There are no such residues in this entry.