



# Full wwPDB X-ray Structure Validation Report ⓘ

Feb 1, 2016 – 08:00 AM GMT

PDB ID : 3CZK  
Title : Crystal Structure Analysis of Sucrose hydrolase(SUH) E322Q-sucrose complex  
Authors : Kim, M.I.; Rhee, S.  
Deposited on : 2008-04-29  
Resolution : 2.20 Å(reported)

This is a Full wwPDB X-ray Structure Validation Report for a publicly released PDB entry.  
We welcome your comments at [validation@mail.wwpdb.org](mailto:validation@mail.wwpdb.org)  
A user guide is available at  
<http://wwpdb.org/validation/2016/XrayValidationReportHelp>  
with specific help available everywhere you see the ⓘ symbol.

---

The following versions of software and data (see [references ⓘ](#)) were used in the production of this report:

MolProbity : 4.02b-467  
Mogul : 1.7 (RC4), CSD as536be (2015)  
Xtriage (Phenix) : 1.9-1692  
EDS : rb-20026688  
Percentile statistics : 20151230.v01 (using entries in the PDB archive December 30th 2015)  
Refmac : 5.8.0135  
CCP4 : 6.5.0  
Ideal geometry (proteins) : Engh & Huber (2001)  
Ideal geometry (DNA, RNA) : Parkinson et al. (1996)  
Validation Pipeline (wwPDB-VP) : trunk26865

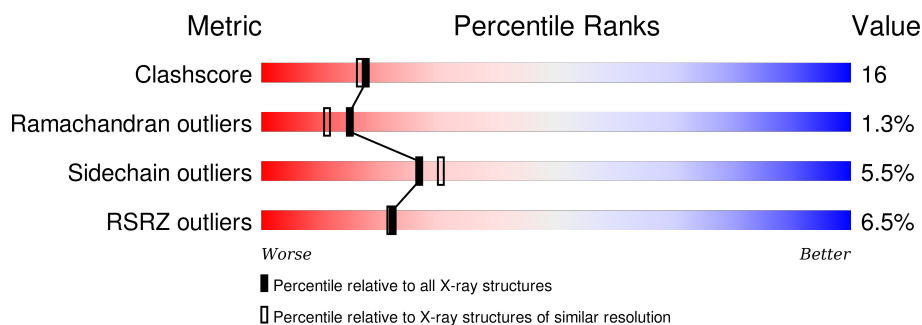
# 1 Overall quality at a glance

The following experimental techniques were used to determine the structure:

*X-RAY DIFFRACTION*

The reported resolution of this entry is 2.20 Å.

Percentile scores (ranging between 0-100) for global validation metrics of the entry are shown in the following graphic. The table shows the number of entries on which the scores are based.



Metric	Whole archive (#Entries)	Similar resolution (#Entries, resolution range(Å))
Clashscore	102246	4477 (2.20-2.20)
Ramachandran outliers	100387	4404 (2.20-2.20)
Sidechain outliers	100360	4405 (2.20-2.20)
RSRZ outliers	91569	3781 (2.20-2.20)

The table below summarises the geometric issues observed across the polymeric chains and their fit to the electron density. The red, orange, yellow and green segments on the lower bar indicate the fraction of residues that contain outliers for  $\geq 3$ , 2, 1 and 0 types of geometric quality criteria. A grey segment represents the fraction of residues that are not modelled. The numeric value for each fraction is indicated below the corresponding segment, with a dot representing fractions  $\leq 5\%$ . The upper red bar (where present) indicates the fraction of residues that have poor fit to the electron density. The numeric value is given above the bar.

Mol	Chain	Length	Quality of chain
1	A	644	

## 2 Entry composition [i](#)

There are 3 unique types of molecules in this entry. The entry contains 5085 atoms, of which 0 are hydrogens and 0 are deuteriums.

In the tables below, the ZeroOcc column contains the number of atoms modelled with zero occupancy, the AltConf column contains the number of residues with at least one atom in alternate conformation and the Trace column contains the number of residues modelled with at most 2 atoms.

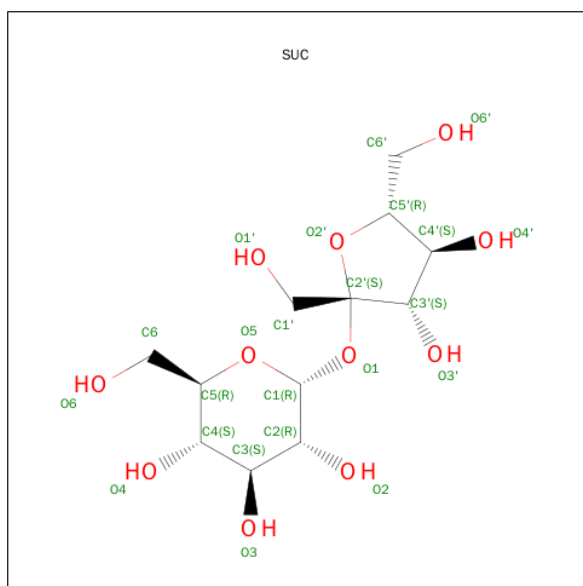
- Molecule 1 is a protein called Sucrose hydrolase.

Mol	Chain	Residues	Atoms					ZeroOcc	AltConf	Trace
			Total	C	N	O	S			
1	A	618	4798	3043	869	867	19	0	0	0

There is a discrepancy between the modelled and reference sequences:

Chain	Residue	Modelled	Actual	Comment	Reference
A	322	GLN	GLU	ENGINEERED	UNP Q6UVM5

- Molecule 2 is SUGAR (SUCROSE) (three-letter code: SUC) (formula:  $C_{12}H_{22}O_{11}$ ).



Mol	Chain	Residues	Atoms			ZeroOcc	AltConf
			Total	C	O		
2	A	1	23	12	11	0	0

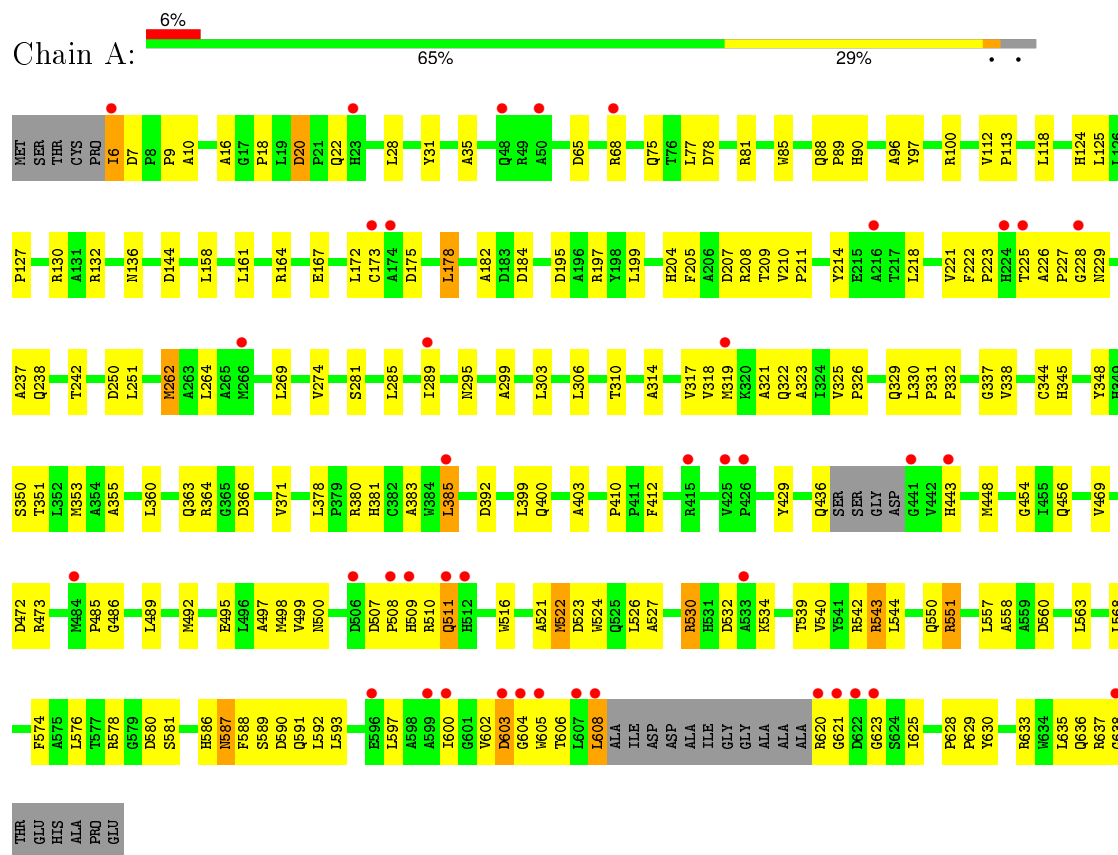
- Molecule 3 is water.

Mol	Chain	Residues	Atoms		ZeroOcc	AltConf
3	A	264	Total 264	O 264	0	0

### 3 Residue-property plots

These plots are drawn for all protein, RNA and DNA chains in the entry. The first graphic for a chain summarises the proportions of errors displayed in the second graphic. The second graphic shows the sequence view annotated by issues in geometry and electron density. Residues are color-coded according to the number of geometric quality criteria for which they contain at least one outlier: green = 0, yellow = 1, orange = 2 and red = 3 or more. A red dot above a residue indicates a poor fit to the electron density ( $RSRZ > 2$ ). Stretches of 2 or more consecutive residues without any outlier are shown as a green connector. Residues present in the sample, but not in the model, are shown in grey.

#### • Molecule 1: Sucrose hydrolase



## 4 Data and refinement statistics

Property	Value	Source
Space group	P 21 21 2	Depositor
Cell constants a, b, c, $\alpha$ , $\beta$ , $\gamma$	96.50 Å 118.60 Å 55.60 Å 90.00° 90.00° 90.00°	Depositor
Resolution (Å)	50.00 – 2.20 44.69 – 2.20	Depositor EDS
% Data completeness (in resolution range)	83.5 (50.00-2.20) 94.2 (44.69-2.20)	Depositor EDS
$R_{merge}$	0.07	Depositor
$R_{sym}$	(Not available)	Depositor
$\langle I/\sigma(I) \rangle$ <sup>1</sup>	3.81 (at 2.20 Å)	Xtriage
Refinement program	CNS	Depositor
R, $R_{free}$	0.200 , 0.262 0.213 , (Not available)	Depositor DCC
$R_{free}$ test set	No test flags present.	DCC
Wilson B-factor (Å <sup>2</sup> )	30.6	Xtriage
Anisotropy	0.635	Xtriage
Bulk solvent $k_{sol}$ (e/Å <sup>3</sup> ), $B_{sol}$ (Å <sup>2</sup> )	0.36 , 47.7	EDS
Estimated twinning fraction	No twinning to report.	Xtriage
L-test for twinning <sup>2</sup>	$\langle  L  \rangle = 0.47$ , $\langle L^2 \rangle = 0.30$	Xtriage
Outliers	1 of 33026 reflections (0.003%)	Xtriage
$F_o, F_c$ correlation	0.94	EDS
Total number of atoms	5085	wwPDB-VP
Average B, all atoms (Å <sup>2</sup> )	34.0	wwPDB-VP

Xtriage's analysis on translational NCS is as follows: *The largest off-origin peak in the Patterson function is 5.78% of the height of the origin peak. No significant pseudotranslation is detected.*

<sup>1</sup>Intensities estimated from amplitudes.

<sup>2</sup>Theoretical values of  $\langle |L| \rangle$ ,  $\langle L^2 \rangle$  for acentric reflections are 0.5, 0.375 respectively for untwinned datasets, and 0.333, 0.2 for perfectly twinned datasets.

## 5 Model quality [i](#)

### 5.1 Standard geometry [i](#)

Bond lengths and bond angles in the following residue types are not validated in this section: SUC

The Z score for a bond length (or angle) is the number of standard deviations the observed value is removed from the expected value. A bond length (or angle) with  $|Z| > 5$  is considered an outlier worth inspection. RMSZ is the root-mean-square of all Z scores of the bond lengths (or angles).

Mol	Chain	Bond lengths		Bond angles	
		RMSZ	$\# Z  > 5$	RMSZ	$\# Z  > 5$
1	A	0.48	4/4931 (0.1%)	0.62	1/6731 (0.0%)

All (4) bond length outliers are listed below:

Mol	Chain	Res	Type	Atoms	Z	Observed(Å)	Ideal(Å)
1	A	353	MET	CG-SD	5.64	1.95	1.81
1	A	522	MET	CG-SD	5.38	1.95	1.81
1	A	262	MET	CG-SD	5.37	1.95	1.81
1	A	448	MET	CG-SD	5.24	1.94	1.81

All (1) bond angle outliers are listed below:

Mol	Chain	Res	Type	Atoms	Z	Observed(°)	Ideal(°)
1	A	385	LEU	N-CA-C	-5.46	96.27	111.00

There are no chirality outliers.

There are no planarity outliers.

### 5.2 Too-close contacts [i](#)

In the following table, the Non-H and H(model) columns list the number of non-hydrogen atoms and hydrogen atoms in the chain respectively. The H(added) column lists the number of hydrogen atoms added and optimized by MolProbity. The Clashes column lists the number of clashes within the asymmetric unit, whereas Symm-Clashes lists symmetry related clashes.

Mol	Chain	Non-H	H(model)	H(added)	Clashes	Symm-Clashes
1	A	4798	0	4613	149	0
2	A	23	0	22	2	0
3	A	264	0	0	9	1

*Continued on next page...*

*Continued from previous page...*

Mol	Chain	Non-H	H(model)	H(added)	Clashes	Symm-Clashes
All	All	5085	0	4635	150	1

The all-atom clashscore is defined as the number of clashes found per 1000 atoms (including hydrogen atoms). The all-atom clashscore for this structure is 16.

All (150) close contacts within the same asymmetric unit are listed below, sorted by their clash magnitude.

Atom-1	Atom-2	Interatomic distance (Å)	Clash overlap (Å)
1:A:550:GLN:HE21	1:A:608:LEU:HB2	1.17	1.08
1:A:18:PRO:O	1:A:68:ARG:HD2	1.56	1.05
1:A:456:GLN:HE21	1:A:499:VAL:HB	1.30	0.96
1:A:226:ALA:C	1:A:228:GLY:H	1.66	0.92
1:A:281:SER:H	1:A:322:GLN:NE2	1.73	0.87
1:A:96:ALA:HB2	1:A:492:MET:HB2	1.63	0.81
1:A:226:ALA:C	1:A:228:GLY:N	2.37	0.78
1:A:605:TRP:HE3	1:A:606:THR:H	1.31	0.78
1:A:550:GLN:NE2	1:A:608:LEU:HB2	1.97	0.77
1:A:319:MET:H	1:A:345:HIS:HD2	1.32	0.77
1:A:178:LEU:HD13	1:A:285:LEU:HD21	1.66	0.76
1:A:299:ALA:O	1:A:303:LEU:HD13	1.86	0.75
1:A:226:ALA:O	1:A:228:GLY:N	2.20	0.74
1:A:602:VAL:O	1:A:603:ASP:HB2	1.90	0.72
1:A:563:LEU:HD11	1:A:576:LEU:HD21	1.71	0.70
1:A:16:ALA:HB2	1:A:28:LEU:HD21	1.73	0.70
1:A:214:TYR:O	1:A:218:LEU:HG	1.91	0.69
1:A:403:ALA:HA	1:A:412:PHE:CE1	2.29	0.68
1:A:497:ALA:HB2	1:A:540:VAL:HG21	1.78	0.65
1:A:392:ASP:OD2	2:A:700:SUC:O2	2.10	0.65
1:A:225:THR:HB	1:A:436:GLN:HE22	1.61	0.64
1:A:89:PRO:O	1:A:551:ARG:HD3	1.99	0.62
1:A:542:ARG:HG2	1:A:542:ARG:HH11	1.63	0.62
1:A:318:VAL:HG13	1:A:345:HIS:HB2	1.81	0.62
1:A:132:ARG:HG3	1:A:184:ASP:CG	2.20	0.61
1:A:485:PRO:HB3	1:A:578:ARG:NH1	2.14	0.61
1:A:485:PRO:HB3	1:A:578:ARG:HH12	1.65	0.61
1:A:97:TYR:HB2	1:A:100:ARG:HG2	1.82	0.61
1:A:330:LEU:HB2	1:A:331:PRO:HD3	1.82	0.60
1:A:563:LEU:CD1	1:A:576:LEU:HD21	2.32	0.60
1:A:597:LEU:HD11	1:A:623:GLY:H	1.67	0.59
1:A:68:ARG:HD3	3:A:970:HOH:O	2.03	0.59
1:A:325:VAL:HB	1:A:326:PRO:HD2	1.84	0.59

*Continued on next page...*



*Continued from previous page...*

Atom-1	Atom-2	Interatomic distance (Å)	Clash overlap (Å)
1:A:319:MET:H	1:A:345:HIS:CD2	2.19	0.58
1:A:269:LEU:O	1:A:274:VAL:HG13	2.03	0.58
1:A:550:GLN:NE2	1:A:608:LEU:H	2.00	0.58
1:A:16:ALA:O	1:A:18:PRO:HD3	2.04	0.57
1:A:592:LEU:HD12	1:A:628:PRO:HA	1.86	0.57
1:A:600:ILE:HG13	1:A:602:VAL:HG22	1.87	0.57
1:A:65:ASP:HB2	3:A:853:HOH:O	2.05	0.56
1:A:625:ILE:HD13	1:A:635:LEU:HD11	1.88	0.56
1:A:281:SER:H	1:A:322:GLN:HE21	1.53	0.56
1:A:606:THR:HG22	1:A:620:ARG:HB2	1.87	0.56
1:A:210:VAL:HB	1:A:211:PRO:HD3	1.88	0.56
1:A:295:ASN:HD21	1:A:325:VAL:HG11	1.70	0.56
1:A:456:GLN:NE2	1:A:500:ASN:H	2.03	0.56
1:A:360:LEU:HD11	1:A:473:ARG:HD3	1.88	0.56
1:A:348:TYR:HA	1:A:385:LEU:HB3	1.88	0.55
1:A:337:GLY:HA3	3:A:859:HOH:O	2.06	0.54
1:A:550:GLN:HE21	1:A:608:LEU:H	1.55	0.54
1:A:225:THR:HG21	3:A:1025:HOH:O	2.07	0.54
1:A:269:LEU:HD22	3:A:819:HOH:O	2.07	0.54
1:A:380:ARG:HG3	1:A:381:HIS:CD2	2.42	0.54
1:A:558:ALA:O	1:A:578:ARG:NH2	2.41	0.54
1:A:281:SER:H	1:A:322:GLN:HE22	1.54	0.53
1:A:325:VAL:HG21	1:A:329:GLN:HB3	1.90	0.52
1:A:175:ASP:HB2	3:A:806:HOH:O	2.08	0.52
1:A:498:MET:CE	1:A:523:ASP:HB2	2.39	0.52
1:A:158:LEU:C	1:A:158:LEU:HD23	2.31	0.52
1:A:587:ASN:O	1:A:630:TYR:HA	2.10	0.52
1:A:378:LEU:HD13	1:A:383:ALA:HA	1.93	0.51
1:A:606:THR:HA	1:A:635:LEU:HD23	1.91	0.51
1:A:587:ASN:ND2	1:A:589:SER:H	2.09	0.51
1:A:158:LEU:HD23	1:A:158:LEU:O	2.09	0.51
1:A:542:ARG:NH1	1:A:542:ARG:HG2	2.26	0.50
1:A:130:ARG:HB2	1:A:144:ASP:HB3	1.94	0.50
1:A:97:TYR:CB	1:A:100:ARG:HG2	2.42	0.50
1:A:364:ARG:HB3	1:A:366:ASP:OD1	2.12	0.50
1:A:523:ASP:OD1	1:A:526:LEU:HB2	2.12	0.49
1:A:508:PRO:HA	1:A:511:GLN:CD	2.32	0.49
1:A:195:ASP:OD1	1:A:197:ARG:HB3	2.13	0.49
1:A:495:GLU:HA	1:A:544:LEU:HD12	1.94	0.48
1:A:16:ALA:O	1:A:18:PRO:CD	2.60	0.48
1:A:590:ASP:OD1	1:A:591:GLN:HG3	2.13	0.48

*Continued on next page...*

*Continued from previous page...*

Atom-1	Atom-2	Interatomic distance (Å)	Clash overlap (Å)
1:A:321:ALA:HB2	1:A:344:CYS:SG	2.53	0.48
1:A:625:ILE:HD13	1:A:635:LEU:CD1	2.43	0.48
1:A:330:LEU:CB	1:A:331:PRO:HD3	2.43	0.48
1:A:507:ASP:OD1	1:A:509:HIS:HB2	2.14	0.48
1:A:75:GLN:O	1:A:78:ASP:HB2	2.12	0.48
1:A:97:TYR:HB2	1:A:100:ARG:CG	2.44	0.48
1:A:363:GLN:HA	1:A:588:PHE:O	2.14	0.48
1:A:225:THR:CB	1:A:436:GLN:HE22	2.26	0.47
1:A:289:ILE:O	1:A:289:ILE:HD12	2.15	0.47
1:A:229:ASN:HA	1:A:242:THR:O	2.15	0.47
1:A:20:ASP:OD2	1:A:22:GLN:HB3	2.13	0.47
1:A:338:VAL:HG12	3:A:859:HOH:O	2.14	0.47
1:A:429:TYR:O	1:A:454:GLY:HA2	2.15	0.47
1:A:364:ARG:NH2	1:A:410:PRO:HG2	2.30	0.47
1:A:7:ASP:OD1	1:A:9:PRO:HD2	2.15	0.47
1:A:604:GLY:HA3	1:A:638:GLY:C	2.35	0.46
1:A:178:LEU:HA	1:A:262:MET:CE	2.45	0.46
1:A:221:VAL:C	1:A:223:PRO:HD3	2.36	0.46
1:A:238:GLN:HE21	1:A:238:GLN:HB3	1.59	0.46
1:A:469:VAL:O	1:A:472:ASP:HB2	2.15	0.45
1:A:539:THR:O	1:A:543:ARG:HG2	2.16	0.45
1:A:557:LEU:C	1:A:578:ARG:HH21	2.20	0.45
1:A:204:HIS:CD2	1:A:238:GLN:NE2	2.85	0.45
1:A:543:ARG:HH11	1:A:543:ARG:HB3	1.80	0.45
1:A:597:LEU:CD1	1:A:623:GLY:H	2.29	0.45
1:A:306:LEU:O	1:A:310:THR:HG23	2.17	0.45
1:A:318:VAL:HG13	1:A:345:HIS:CG	2.52	0.45
1:A:6:ILE:HD13	1:A:6:ILE:N	2.31	0.45
1:A:100:ARG:HB3	1:A:521:ALA:HA	1.98	0.45
1:A:204:HIS:CD2	1:A:238:GLN:HE22	2.35	0.45
1:A:510:ARG:HB3	1:A:516:TRP:CD1	2.52	0.45
1:A:604:GLY:O	1:A:621:GLY:HA3	2.18	0.44
1:A:590:ASP:HA	1:A:629:PRO:HB3	2.00	0.44
1:A:20:ASP:HA	1:A:68:ARG:NH2	2.34	0.43
1:A:318:VAL:HG13	1:A:345:HIS:CB	2.47	0.43
1:A:132:ARG:HG3	1:A:184:ASP:OD1	2.17	0.43
1:A:269:LEU:CD2	3:A:819:HOH:O	2.65	0.43
1:A:88:GLN:HB2	1:A:90:HIS:CE1	2.54	0.43
1:A:214:TYR:CZ	1:A:289:ILE:HG23	2.54	0.43
1:A:204:HIS:HD2	1:A:238:GLN:NE2	2.17	0.43
1:A:605:TRP:O	1:A:635:LEU:HB3	2.18	0.43

*Continued on next page...*

Continued from previous page...

Atom-1	Atom-2	Interatomic distance (Å)	Clash overlap (Å)
1:A:124:HIS:HA	1:A:173:CYS:HB3	2.01	0.43
1:A:510:ARG:HD2	1:A:516:TRP:CD2	2.54	0.43
1:A:125:LEU:HA	1:A:125:LEU:HD23	1.88	0.43
1:A:602:VAL:HG23	1:A:603:ASP:N	2.34	0.42
1:A:498:MET:HE1	1:A:523:ASP:HB2	2.00	0.42
1:A:534:LYS:O	1:A:534:LYS:HG3	2.19	0.42
1:A:314:ALA:O	1:A:317:VAL:HB	2.18	0.42
1:A:164:ARG:O	1:A:167:GLU:HG2	2.19	0.42
1:A:581:SER:O	1:A:636:GLN:HA	2.20	0.42
1:A:383:ALA:HB1	1:A:486:GLY:CA	2.50	0.42
1:A:602:VAL:O	1:A:603:ASP:CB	2.65	0.42
1:A:522:MET:HG2	1:A:524:TRP:CE2	2.55	0.42
1:A:351:THR:HG23	1:A:399:LEU:CD2	2.49	0.42
1:A:606:THR:CG2	1:A:620:ARG:HD2	2.49	0.42
1:A:205:PHE:N	1:A:238:GLN:HE21	2.18	0.42
1:A:355:ALA:CB	1:A:371:VAL:HG21	2.50	0.42
1:A:81:ARG:HD3	1:A:85:TRP:CD1	2.55	0.42
1:A:31:TYR:O	1:A:35:ALA:HB2	2.20	0.42
1:A:112:VAL:N	1:A:113:PRO:CD	2.83	0.41
1:A:403:ALA:HA	1:A:412:PHE:CD1	2.55	0.41
2:A:700:SUC:O5	2:A:700:SUC:H1'1	2.19	0.41
1:A:132:ARG:HB2	1:A:182:ALA:HB1	2.01	0.41
1:A:385:LEU:HD13	1:A:385:LEU:C	2.40	0.41
1:A:495:GLU:HA	1:A:544:LEU:CD1	2.50	0.41
1:A:7:ASP:O	1:A:10:ALA:HB3	2.19	0.41
1:A:318:VAL:HG13	1:A:345:HIS:CD2	2.55	0.41
1:A:443:HIS:HE1	3:A:932:HOH:O	2.04	0.41
1:A:527:ALA:O	1:A:530:ARG:HB3	2.21	0.41
1:A:331:PRO:N	1:A:332:PRO:HD2	2.36	0.41
1:A:574:PHE:O	1:A:586:HIS:HD2	2.04	0.41
1:A:429:TYR:CE2	1:A:473:ARG:CZ	3.04	0.41
1:A:222:PHE:N	1:A:223:PRO:HD3	2.37	0.40
1:A:593:LEU:C	1:A:593:LEU:HD12	2.42	0.40
1:A:237:ALA:O	1:A:238:GLN:HG2	2.21	0.40
1:A:543:ARG:NH1	1:A:543:ARG:HB3	2.37	0.40

All (1) symmetry-related close contacts are listed below. The label for Atom-2 includes the symmetry operator and encoded unit-cell translations to be applied.

Atom-1	Atom-2	Interatomic distance (Å)	Clash overlap (Å)
3:A:1024:HOH:O	3:A:1024:HOH:O[2_565]	1.68	0.52

## 5.3 Torsion angles [i](#)

### 5.3.1 Protein backbone [i](#)

In the following table, the Percentiles column shows the percent Ramachandran outliers of the chain as a percentile score with respect to all X-ray entries followed by that with respect to entries of similar resolution.

The Analysed column shows the number of residues for which the backbone conformation was analysed, and the total number of residues.

Mol	Chain	Analysed	Favoured	Allowed	Outliers	Percentiles	
1	A	612/644 (95%)	569 (93%)	35 (6%)	8 (1%)	15	11

All (8) Ramachandran outliers are listed below:

Mol	Chain	Res	Type
1	A	603	ASP
1	A	323	ALA
1	A	532	ASP
1	A	637	ARG
1	A	127	PRO
1	A	209	THR
1	A	227	PRO
1	A	511	GLN

### 5.3.2 Protein sidechains [i](#)

In the following table, the Percentiles column shows the percent sidechain outliers of the chain as a percentile score with respect to all X-ray entries followed by that with respect to entries of similar resolution.

The Analysed column shows the number of residues for which the sidechain conformation was analysed, and the total number of residues.

Mol	Chain	Analysed	Rotameric	Outliers	Percentiles	
1	A	474/491 (96%)	448 (94%)	26 (6%)	27	30

All (26) residues with a non-rotameric sidechain are listed below:

Mol	Chain	Res	Type
1	A	6	ILE
1	A	20	ASP
1	A	77	LEU

*Continued on next page...*

*Continued from previous page...*

Mol	Chain	Res	Type
1	A	118	LEU
1	A	136	ASN
1	A	161	LEU
1	A	172	LEU
1	A	178	LEU
1	A	199	LEU
1	A	207	ASP
1	A	208	ARG
1	A	250	ASP
1	A	251	LEU
1	A	264	LEU
1	A	350	SER
1	A	400	GLN
1	A	489	LEU
1	A	530	ARG
1	A	543	ARG
1	A	551	ARG
1	A	560	ASP
1	A	568	LEU
1	A	580	ASP
1	A	587	ASN
1	A	608	LEU
1	A	633	ARG

Some sidechains can be flipped to improve hydrogen bonding and reduce clashes. All (17) such sidechains are listed below:

Mol	Chain	Res	Type
1	A	69	GLN
1	A	72	GLN
1	A	75	GLN
1	A	106	GLN
1	A	136	ASN
1	A	203	HIS
1	A	204	HIS
1	A	238	GLN
1	A	295	ASN
1	A	322	GLN
1	A	345	HIS
1	A	397	ASN
1	A	456	GLN
1	A	459	GLN
1	A	550	GLN

*Continued on next page...*

*Continued from previous page...*

Mol	Chain	Res	Type
1	A	586	HIS
1	A	587	ASN

### 5.3.3 RNA ⓘ

There are no RNA molecules in this entry.

## 5.4 Non-standard residues in protein, DNA, RNA chains ⓘ

There are no non-standard protein/DNA/RNA residues in this entry.

## 5.5 Carbohydrates ⓘ

There are no carbohydrates in this entry.

## 5.6 Ligand geometry ⓘ

1 ligand is modelled in this entry.

In the following table, the Counts columns list the number of bonds (or angles) for which Mogul statistics could be retrieved, the number of bonds (or angles) that are observed in the model and the number of bonds (or angles) that are defined in the chemical component dictionary. The Link column lists molecule types, if any, to which the group is linked. The Z score for a bond length (or angle) is the number of standard deviations the observed value is removed from the expected value. A bond length (or angle) with  $|Z| > 2$  is considered an outlier worth inspection. RMSZ is the root-mean-square of all Z scores of the bond lengths (or angles).

Mol	Type	Chain	Res	Link	Bond lengths			Bond angles		
					Counts	RMSZ	$\# Z  > 2$	Counts	RMSZ	$\# Z  > 2$
2	SUC	A	700	-	24,24,24	1.18	1 (4%)	36,36,36	1.30	4 (11%)

In the following table, the Chirals column lists the number of chiral outliers, the number of chiral centers analysed, the number of these observed in the model and the number defined in the chemical component dictionary. Similar counts are reported in the Torsion and Rings columns. '-' means no outliers of that kind were identified.

Mol	Type	Chain	Res	Link	Chirals	Torsions	Rings
2	SUC	A	700	-	-	0/12/51/51	0/2/2/2

All (1) bond length outliers are listed below:

Mol	Chain	Res	Type	Atoms	Z	Observed(Å)	Ideal(Å)
2	A	700	SUC	O1-C2'	-4.26	1.25	1.43

All (4) bond angle outliers are listed below:

Mol	Chain	Res	Type	Atoms	Z	Observed(°)	Ideal(°)
2	A	700	SUC	C6-C5-C4	-2.32	107.29	113.02
2	A	700	SUC	C4-C3-C2	-2.02	107.02	110.79
2	A	700	SUC	C1'-C2'-C3'	-2.00	107.73	114.49
2	A	700	SUC	C2'-O1-C1	5.05	130.83	117.53

There are no chirality outliers.

There are no torsion outliers.

There are no ring outliers.

1 monomer is involved in 2 short contacts:

Mol	Chain	Res	Type	Clashes	Symm-Clashes
2	A	700	SUC	2	0

## 5.7 Other polymers [i](#)

There are no such residues in this entry.

## 5.8 Polymer linkage issues [i](#)

There are no chain breaks in this entry.

## 6 Fit of model and data ⓘ

### 6.1 Protein, DNA and RNA chains ⓘ

In the following table, the column labelled ‘#RSRZ> 2’ contains the number (and percentage) of RSRZ outliers, followed by percent RSRZ outliers for the chain as percentile scores relative to all X-ray entries and entries of similar resolution. The OWAB column contains the minimum, median, 95<sup>th</sup> percentile and maximum values of the occupancy-weighted average B-factor per residue. The column labelled ‘Q< 0.9’ lists the number of (and percentage) of residues with an average occupancy less than 0.9.

Mol	Chain	Analysed	<RSRZ>	#RSRZ>2	OWAB(Å <sup>2</sup> )	Q<0.9
1	A	618/644 (95%)	0.27	40 (6%) 22 22	20, 31, 52, 79	0

All (40) RSRZ outliers are listed below:

Mol	Chain	Res	Type	RSRZ
1	A	605	TRP	10.7
1	A	608	LEU	5.7
1	A	509	HIS	5.6
1	A	228	GLY	5.6
1	A	620	ARG	4.6
1	A	225	THR	4.6
1	A	622	ASP	4.1
1	A	224	HIS	3.6
1	A	638	GLY	3.4
1	A	603	ASP	3.3
1	A	216	ALA	3.1
1	A	508	PRO	3.1
1	A	607	LEU	3.0
1	A	426	PRO	3.0
1	A	50	ALA	3.0
1	A	68	ARG	3.0
1	A	23	HIS	2.8
1	A	600	ILE	2.8
1	A	48	GLN	2.7
1	A	511	GLN	2.7
1	A	604	GLY	2.6
1	A	319	MET	2.6
1	A	599	ALA	2.6
1	A	443	HIS	2.6
1	A	266	MET	2.4
1	A	425	VAL	2.4
1	A	173	CYS	2.4

*Continued on next page...*



*Continued from previous page...*

Mol	Chain	Res	Type	RSRZ
1	A	596	GLU	2.4
1	A	441	GLY	2.3
1	A	621	GLY	2.3
1	A	623	GLY	2.3
1	A	512	HIS	2.3
1	A	289	ILE	2.3
1	A	415	ARG	2.2
1	A	6	ILE	2.2
1	A	174	ALA	2.1
1	A	506	ASP	2.1
1	A	533	ALA	2.1
1	A	385	LEU	2.0
1	A	484	MET	2.0

## 6.2 Non-standard residues in protein, DNA, RNA chains [i](#)

There are no non-standard protein/DNA/RNA residues in this entry.

## 6.3 Carbohydrates [i](#)

There are no carbohydrates in this entry.

## 6.4 Ligands [i](#)

In the following table, the Atoms column lists the number of modelled atoms in the group and the number defined in the chemical component dictionary. LLDF column lists the quality of electron density of the group with respect to its neighbouring residues in protein, DNA or RNA chains. The B-factors column lists the minimum, median, 95<sup>th</sup> percentile and maximum values of B factors of atoms in the group. The column labelled 'Q< 0.9' lists the number of atoms with occupancy less than 0.9.

Mol	Type	Chain	Res	Atoms	RSCC	RSR	LLDF	B-factors( $\text{\AA}^2$ )	Q<0.9
2	SUC	A	700	23/23	0.85	0.17	0.42	39,43,51,53	0

## 6.5 Other polymers [i](#)

There are no such residues in this entry.