



Full wwPDB X-ray Structure Validation Report ⓘ

Feb 1, 2016 – 03:41 PM GMT

PDB ID : 4D36
Title : Structure of bovine endothelial nitric oxide synthase heme domain in complex with N-2-(2-(1H-imidazol-1-yl)pyrimidin-4-yl)ethyl-3-(3-chlorophenyl)propan-1-amine
Authors : Li, H.; Poulos, T.L.
Deposited on : 2014-10-20
Resolution : 2.05 Å(reported)

This is a Full wwPDB X-ray Structure Validation Report for a publicly released PDB entry.
We welcome your comments at validation@mail.wwpdb.org
A user guide is available at
<http://wwpdb.org/validation/2016/XrayValidationReportHelp>
with specific help available everywhere you see the ⓘ symbol.

The following versions of software and data (see [references ⓘ](#)) were used in the production of this report:

MolProbity : 4.02b-467
Mogul : 1.7 (RC4), CSD as536be (2015)
Xtriage (Phenix) : 1.9-1692
EDS : rb-20026688
Percentile statistics : 20151230.v01 (using entries in the PDB archive December 30th 2015)
Refmac : 5.8.0135
CCP4 : 6.5.0
Ideal geometry (proteins) : Engh & Huber (2001)
Ideal geometry (DNA, RNA) : Parkinson et al. (1996)
Validation Pipeline (wwPDB-VP) : trunk26865

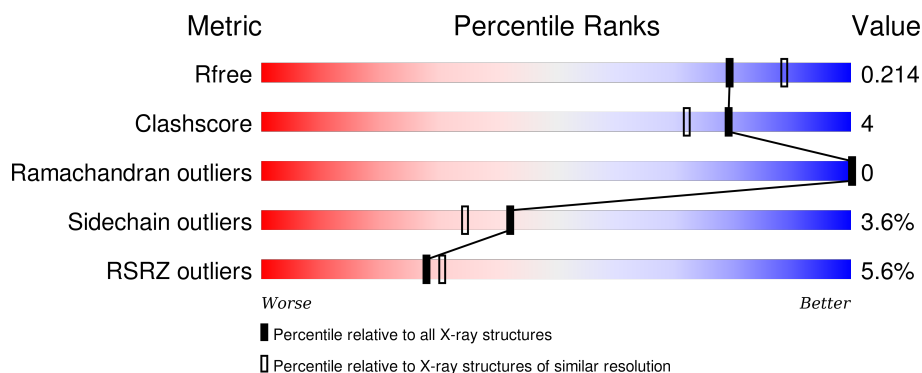
1 Overall quality at a glance

The following experimental techniques were used to determine the structure:

X-RAY DIFFRACTION


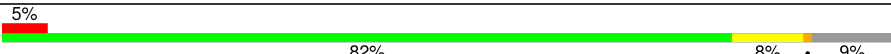
The reported resolution of this entry is 2.05 Å.

Percentile scores (ranging between 0-100) for global validation metrics of the entry are shown in the following graphic. The table shows the number of entries on which the scores are based.



Metric	Whole archive (#Entries)	Similar resolution (#Entries, resolution range(Å))
R_{free}	91344	1799 (2.08-2.04)
Clashscore	102246	1910 (2.08-2.04)
Ramachandran outliers	100387	1893 (2.08-2.04)
Sidechain outliers	100360	1893 (2.08-2.04)
RSRZ outliers	91569	1802 (2.08-2.04)

The table below summarises the geometric issues observed across the polymeric chains and their fit to the electron density. The red, orange, yellow and green segments on the lower bar indicate the fraction of residues that contain outliers for ≥ 3 , 2, 1 and 0 types of geometric quality criteria. A grey segment represents the fraction of residues that are not modelled. The numeric value for each fraction is indicated below the corresponding segment, with a dot representing fractions $\leq 5\%$. The upper red bar (where present) indicates the fraction of residues that have poor fit to the electron density. The numeric value is given above the bar.

Mol	Chain	Length	Quality of chain
1	A	443	 5% 84% 7% 9%
1	B	443	 5% 82% 8% 9%

The following table lists non-polymeric compounds, carbohydrate monomers and non-standard residues in protein, DNA, RNA chains that are outliers for geometric or electron-density-fit criteria:

Mol	Type	Chain	Res	Chirality	Geometry	Clashes	Electron density
5	ACT	A	861	-	-	X	X
5	ACT	B	860	-	-	-	X
5	ACT	B	861	-	-	-	X
6	GOL	A	880	-	-	-	X
6	GOL	B	880	-	-	-	X

2 Entry composition [i](#)

There are 8 unique types of molecules in this entry. The entry contains 7002 atoms, of which 0 are hydrogens and 0 are deuteriums.

In the tables below, the ZeroOcc column contains the number of atoms modelled with zero occupancy, the AltConf column contains the number of residues with at least one atom in alternate conformation and the Trace column contains the number of residues modelled with at most 2 atoms.

- Molecule 1 is a protein called NITRIC OXIDE SYNTHASE, ENDOTHELIAL.

Mol	Chain	Residues	Atoms						ZeroOcc	AltConf	Trace
1	A	405	Total	As	C	N	O	S	0	1	0
			3231	1	2053	569	592	16			
1	B	404	Total	As	C	N	O	S	0	0	0
			3221	1	2048	568	588	16			

There are 2 discrepancies between the modelled and reference sequences:

Chain	Residue	Modelled	Actual	Comment	Reference
A	100	ARG	CYS	CONFLICT	UNP P29473
B	100	ARG	CYS	CONFLICT	UNP P29473

- Molecule 2 is PROTOPORPHYRIN IX CONTAINING FE (three-letter code: HEM) (formula: $C_{34}H_{32}FeN_4O_4$).



Mol	Chain	Residues	Atoms					ZeroOcc	AltConf
2	A	1	Total	C	Fe	N	O	0	0
			43	34	1	4	4		

Continued on next page...

Continued from previous page...

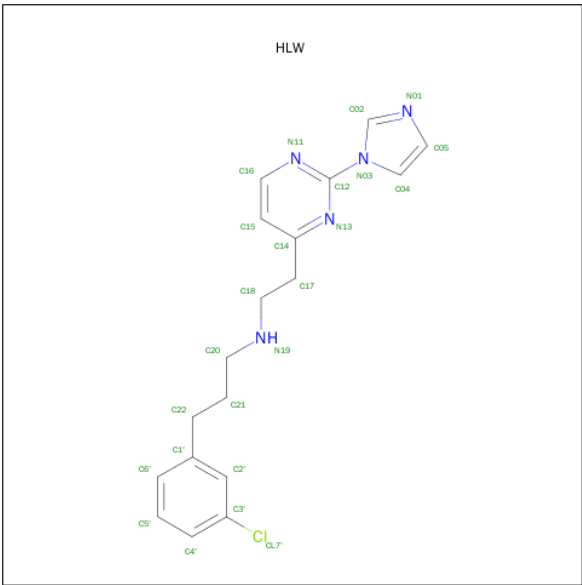
Mol	Chain	Residues	Atoms					ZeroOcc	AltConf
2	B	1	Total	C	Fe	N	O	0	0
			43	34	1	4	4		

- Molecule 3 is 5,6,7,8-TETRAHYDROBIOPTERIN (three-letter code: H4B) (formula: $C_9H_{15}N_5O_3$).



Mol	Chain	Residues	Atoms				ZeroOcc	AltConf
3	A	1	Total	C	N	O	0	0
			17	9	5	3		
3	B	1	Total	C	N	O	0	0
			17	9	5	3		

- Molecule 4 is 3-(3-CHLOROPHENYL)-N-{2-[2-(1H-IMIDAZOL-1-YL)PYRIMIDIN-4-YL]ETHYL}PROPAN-1-AMINE (three-letter code: HLW) (formula: $C_{18}H_{20}ClN_5$).



Mol	Chain	Residues	Atoms				ZeroOcc	AltConf
4	A	1	Total	C	Cl	N	0	0
			24	18	1	5		
4	B	1	Total	C	Cl	N	0	0
			24	18	1	5		

- Molecule 5 is ACETATE ION (three-letter code: ACT) (formula: C₂H₃O₂).



Mol	Chain	Residues	Atoms			ZeroOcc	AltConf
5	A	1	Total	C	O	0	0
			4	2	2		
5	A	1	Total	C	O	0	0
			4	2	2		

Continued on next page...

Continued from previous page...

Mol	Chain	Residues	Atoms			ZeroOcc	AltConf
5	B	1	Total	C	O	0	0
			4	2	2		
5	B	1	Total	C	O	0	0
			4	2	2		

- Molecule 6 is GLYCEROL (three-letter code: GOL) (formula: $C_3H_8O_3$).



Mol	Chain	Residues	Atoms			ZeroOcc	AltConf
6	A	1	Total	C	O	0	0
			6	3	3		
6	B	1	Total	C	O	0	0
			6	3	3		

- Molecule 7 is ZINC ION (three-letter code: ZN) (formula: Zn).

Mol	Chain	Residues	Atoms		ZeroOcc	AltConf
7	A	1	Total	Zn	0	0
			1	1		

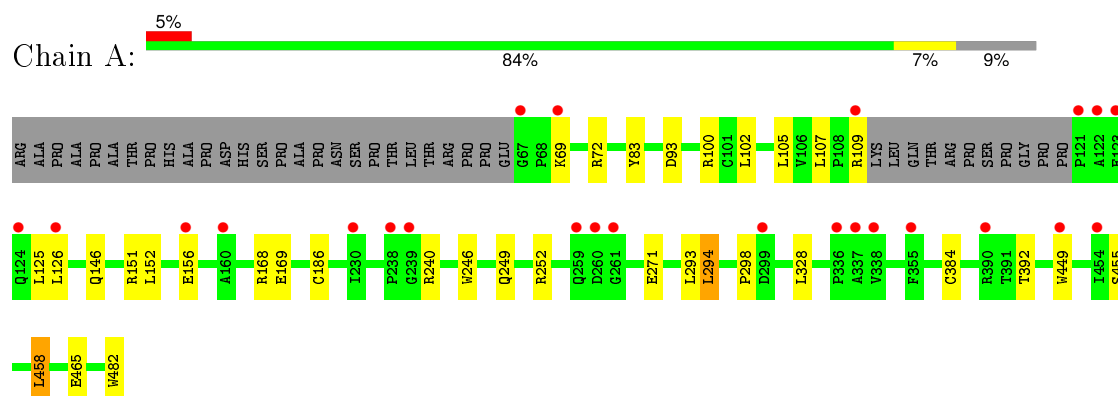
- Molecule 8 is water.

Mol	Chain	Residues	Atoms		ZeroOcc	AltConf
8	A	202	Total	O	0	0
			202	202		
8	B	151	Total	O	0	0
			151	151		

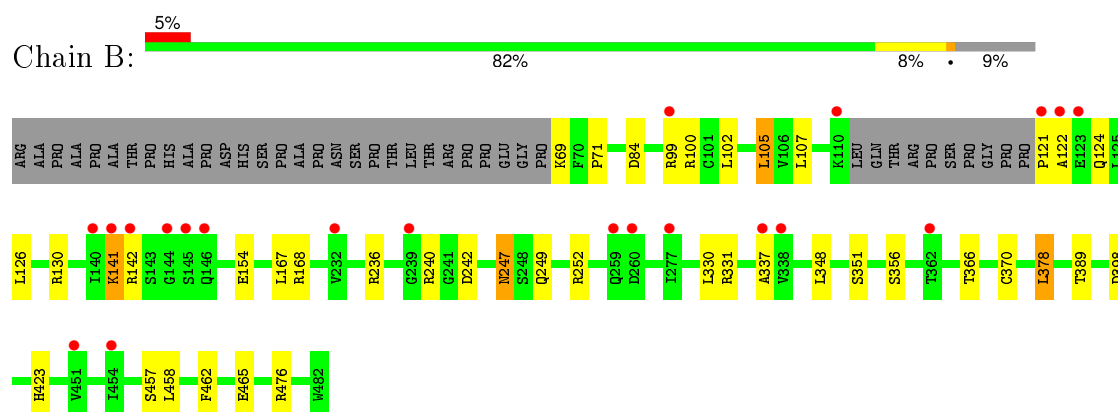
3 Residue-property plots [i](#)

These plots are drawn for all protein, RNA and DNA chains in the entry. The first graphic for a chain summarises the proportions of errors displayed in the second graphic. The second graphic shows the sequence view annotated by issues in geometry and electron density. Residues are color-coded according to the number of geometric quality criteria for which they contain at least one outlier: green = 0, yellow = 1, orange = 2 and red = 3 or more. A red dot above a residue indicates a poor fit to the electron density ($RSRZ > 2$). Stretches of 2 or more consecutive residues without any outlier are shown as a green connector. Residues present in the sample, but not in the model, are shown in grey.

• Molecule 1: NITRIC OXIDE SYNTHASE, ENDOTHELIAL



• Molecule 1: NITRIC OXIDE SYNTHASE, ENDOTHELIAL



4 Data and refinement statistics

Property	Value	Source
Space group	P 21 21 21	Depositor
Cell constants a, b, c, α , β , γ	57.94Å 106.37Å 156.64Å 90.00° 90.00° 90.00°	Depositor
Resolution (Å)	39.16 – 2.05 39.16 – 2.05	Depositor EDS
% Data completeness (in resolution range)	96.6 (39.16-2.05) 97.1 (39.16-2.05)	Depositor EDS
R_{merge}	0.10	Depositor
R_{sym}	(Not available)	Depositor
$\langle I/\sigma(I) \rangle$ ¹	0.99 (at 2.05Å)	Xtriage
Refinement program	PHENIX (PHENIX.REFINE)	Depositor
R, R_{free}	0.168 , 0.214 0.176 , 0.214	Depositor DCC
R_{free} test set	2977 reflections (5.25%)	DCC
Wilson B-factor (Å ²)	44.4	Xtriage
Anisotropy	0.279	Xtriage
Bulk solvent k_{sol} (e/Å ³), B_{sol} (Å ²)	0.35 , 45.2	EDS
Estimated twinning fraction	No twinning to report.	Xtriage
L-test for twinning ²	$\langle L \rangle = 0.48$, $\langle L^2 \rangle = 0.31$	Xtriage
Outliers	0 of 59636 reflections	Xtriage
F_o, F_c correlation	0.97	EDS
Total number of atoms	7002	wwPDB-VP
Average B, all atoms (Å ²)	48.0	wwPDB-VP

Xtriage's analysis on translational NCS is as follows: *The largest off-origin peak in the Patterson function is 3.41% of the height of the origin peak. No significant pseudotranslation is detected.*

¹Intensities estimated from amplitudes.

²Theoretical values of $\langle |L| \rangle$, $\langle L^2 \rangle$ for acentric reflections are 0.5, 0.375 respectively for untwinned datasets, and 0.333, 0.2 for perfectly twinned datasets.

5 Model quality

5.1 Standard geometry

Bond lengths and bond angles in the following residue types are not validated in this section: GOL, ZN, H4B, CAS, HLW, ACT, HEM

The Z score for a bond length (or angle) is the number of standard deviations the observed value is removed from the expected value. A bond length (or angle) with $|Z| > 5$ is considered an outlier worth inspection. RMSZ is the root-mean-square of all Z scores of the bond lengths (or angles).

Mol	Chain	Bond lengths		Bond angles	
		RMSZ	# Z >5	RMSZ	# Z >5
1	A	0.41	0/3311	0.54	0/4508
1	B	0.40	0/3300	0.52	0/4491
All	All	0.40	0/6611	0.53	0/8999

There are no bond length outliers.

There are no bond angle outliers.

There are no chirality outliers.

There are no planarity outliers.

5.2 Too-close contacts

In the following table, the Non-H and H(model) columns list the number of non-hydrogen atoms and hydrogen atoms in the chain respectively. The H(added) column lists the number of hydrogen atoms added and optimized by MolProbity. The Clashes column lists the number of clashes within the asymmetric unit, whereas Symm-Clashes lists symmetry related clashes.

Mol	Chain	Non-H	H(model)	H(added)	Clashes	Symm-Clashes
1	A	3231	0	3130	23	0
1	B	3221	0	3130	23	0
2	A	43	0	30	4	0
2	B	43	0	30	1	0
3	A	17	0	15	1	0
3	B	17	0	15	0	0
4	A	24	0	20	1	0
4	B	24	0	20	3	0
5	A	8	0	6	2	0
5	B	8	0	6	0	0
6	A	6	0	8	0	0

Continued on next page...

Continued from previous page...

Mol	Chain	Non-H	H(model)	H(added)	Clashes	Symm-Clashes
6	B	6	0	8	0	0
7	A	1	0	0	0	0
8	A	202	0	0	1	0
8	B	151	0	0	3	0
All	All	7002	0	6418	46	0

The all-atom clashscore is defined as the number of clashes found per 1000 atoms (including hydrogen atoms). The all-atom clashscore for this structure is 4.

All (46) close contacts within the same asymmetric unit are listed below, sorted by their clash magnitude.

Atom-1	Atom-2	Interatomic distance (Å)	Clash overlap (Å)
1:A:384:CAS:AS	1:A:384:CAS:SG	2.47	1.32
1:B:107:LEU:HD21	4:B:800:HLW:H5'	1.66	0.76
1:A:240:ARG:HD3	1:A:298:PRO:HB3	1.70	0.74
1:A:93:ASP:OD1	1:B:99:ARG:NH1	2.21	0.73
1:B:252:ARG:NH2	8:B:2081:HOH:O	2.22	0.71
2:A:500:HEM:HBB2	2:A:500:HEM:HHC	1.82	0.61
1:B:71:PRO:HG2	1:B:84:ASP:HB3	1.83	0.61
1:B:476:ARG:NH1	8:B:2145:HOH:O	2.33	0.61
1:A:105:LEU:HD22	1:B:465:GLU:HB3	1.82	0.60
2:B:500:HEM:HBB2	2:B:500:HEM:HHC	1.85	0.59
1:A:240:ARG:NH2	8:A:2091:HOH:O	2.36	0.57
1:A:384:CAS:CB	1:A:384:CAS:AS	3.12	0.56
1:A:252:ARG:NH1	5:A:861:ACT:OXT	2.39	0.55
1:A:465:GLU:HB3	1:B:105:LEU:HD22	1.90	0.54
1:A:271:GLU:OE2	1:A:482:TRP:NE1	2.36	0.54
1:A:240:ARG:HD3	1:A:298:PRO:CB	2.39	0.53
1:B:247:ASN:N	1:B:247:ASN:OD1	2.42	0.52
1:B:141:LYS:O	1:B:142:ARG:NH1	2.45	0.50
1:A:449:TRP:HA	3:A:600:H4B:N1	2.27	0.49
1:B:236:ARG:HD2	1:B:242:ASP:OD1	2.12	0.49
1:A:72:ARG:NH1	1:A:83:TYR:OH	2.46	0.48
1:A:126:LEU:HD11	1:A:156:GLU:HA	1.96	0.47
1:A:246:TRP:HB2	1:A:294:LEU:HB3	1.98	0.46
1:B:236:ARG:HD3	1:B:351:SER:HB3	1.98	0.46
1:A:249:GLN:HB2	1:A:252:ARG:HG2	1.97	0.46
1:A:252:ARG:NH2	5:A:861:ACT:O	2.49	0.45
1:B:370:CYS:SG	1:B:378:LEU:HD13	2.56	0.45
1:B:167:LEU:HG	1:B:348:LEU:HD12	1.98	0.45
4:B:800:HLW:H17A	4:B:800:HLW:H20	1.67	0.44

Continued on next page...

Continued from previous page...

Atom-1	Atom-2	Interatomic distance (Å)	Clash overlap (Å)
1:B:378:LEU:HB2	8:B:2117:HOH:O	2.18	0.44
1:A:152:LEU:O	1:A:156:GLU:HG3	2.18	0.44
1:B:366:THR:O	1:B:370:CYS:HB2	2.18	0.43
1:B:126:LEU:O	1:B:130:ARG:HG3	2.18	0.43
1:A:392:THR:HB	1:B:423:HIS:HB2	2.00	0.43
1:A:151:ARG:HD3	1:A:168:ARG:NH1	2.34	0.43
1:B:154:GLU:OE1	1:B:168:ARG:NH2	2.50	0.43
1:A:455:SER:OG	1:B:398:ASP:OD2	2.25	0.43
1:A:455:SER:O	1:A:458:LEU:HB2	2.18	0.42
2:A:500:HEM:HBB2	2:A:500:HEM:CHC	2.49	0.42
1:B:121:PRO:HB2	1:B:122:ALA:H	1.68	0.42
1:B:337:ALA:HB2	1:B:356:SER:HB3	2.02	0.42
1:A:186:CYS:HB2	2:A:500:HEM:ND	2.34	0.41
2:A:500:HEM:C1A	4:A:800:HLW:H02	2.55	0.41
1:A:126:LEU:HA	1:A:126:LEU:HD12	1.70	0.41
1:B:457:SER:HA	1:B:462:PHE:CG	2.55	0.41
1:B:249:GLN:NE2	4:B:800:HLW:H15	2.35	0.41

There are no symmetry-related clashes.

5.3 Torsion angles ⓘ

5.3.1 Protein backbone ⓘ

In the following table, the Percentiles column shows the percent Ramachandran outliers of the chain as a percentile score with respect to all X-ray entries followed by that with respect to entries of similar resolution.

The Analysed column shows the number of residues for which the backbone conformation was analysed, and the total number of residues.

Mol	Chain	Analysed	Favoured	Allowed	Outliers	Percentiles	
1	A	401/443 (90%)	392 (98%)	9 (2%)	0	100	100
1	B	399/443 (90%)	392 (98%)	7 (2%)	0	100	100
All	All	800/886 (90%)	784 (98%)	16 (2%)	0	100	100

There are no Ramachandran outliers to report.

5.3.2 Protein sidechains ⓘ

In the following table, the Percentiles column shows the percent sidechain outliers of the chain as a percentile score with respect to all X-ray entries followed by that with respect to entries of similar resolution.

The Analysed column shows the number of residues for which the sidechain conformation was analysed, and the total number of residues.

Mol	Chain	Analysed	Rotameric	Outliers	Percentiles	
1	A	344/375 (92%)	332 (96%)	12 (4%)	43	35
1	B	343/375 (92%)	330 (96%)	13 (4%)	40	32
All	All	687/750 (92%)	662 (96%)	25 (4%)	42	34

All (25) residues with a non-rotameric sidechain are listed below:

Mol	Chain	Res	Type
1	A	69	LYS
1	A	100	ARG
1	A	102	LEU
1	A	107	LEU
1	A	109	ARG
1	A	125	LEU
1	A	146	GLN
1	A	169	GLU
1	A	293	LEU
1	A	294	LEU
1	A	328	LEU
1	A	458	LEU
1	B	69	LYS
1	B	100	ARG
1	B	102	LEU
1	B	105	LEU
1	B	124	GLN
1	B	141	LYS
1	B	240	ARG
1	B	247	ASN
1	B	330	LEU
1	B	331	ARG
1	B	378	LEU
1	B	389	THR
1	B	458	LEU

Some sidechains can be flipped to improve hydrogen bonding and reduce clashes. There are no

such sidechains identified.

5.3.3 RNA ⓘ

There are no RNA molecules in this entry.

5.4 Non-standard residues in protein, DNA, RNA chains ⓘ

2 non-standard protein/DNA/RNA residues are modelled in this entry.

In the following table, the Counts columns list the number of bonds (or angles) for which Mogul statistics could be retrieved, the number of bonds (or angles) that are observed in the model and the number of bonds (or angles) that are defined in the chemical component dictionary. The Link column lists molecule types, if any, to which the group is linked. The Z score for a bond length (or angle) is the number of standard deviations the observed value is removed from the expected value. A bond length (or angle) with $|Z| > 2$ is considered an outlier worth inspection. RMSZ is the root-mean-square of all Z scores of the bond lengths (or angles).

Mol	Type	Chain	Res	Link	Bond lengths			Bond angles		
					Counts	RMSZ	$\# Z > 2$	Counts	RMSZ	$\# Z > 2$
1	CAS	A	384	1	5,8,9	1.05	0	2,9,11	1.22	0
1	CAS	B	384	1	5,8,9	1.09	0	2,9,11	1.21	0

In the following table, the Chirals column lists the number of chiral outliers, the number of chiral centers analysed, the number of these observed in the model and the number defined in the chemical component dictionary. Similar counts are reported in the Torsion and Rings columns. '-' means no outliers of that kind were identified.

Mol	Type	Chain	Res	Link	Chirals	Torsions	Rings
1	CAS	A	384	1	-	0/0/7/9	0/0/0/0
1	CAS	B	384	1	-	0/0/7/9	0/0/0/0

There are no bond length outliers.

There are no bond angle outliers.

There are no chirality outliers.

There are no torsion outliers.

There are no ring outliers.

1 monomer is involved in 2 short contacts:

Mol	Chain	Res	Type	Clashes	Symm-Clashes
1	A	384	CAS	2	0

5.5 Carbohydrates [i](#)

There are no carbohydrates in this entry.

5.6 Ligand geometry [i](#)

Of 13 ligands modelled in this entry, 1 is monoatomic - leaving 12 for Mogul analysis.

In the following table, the Counts columns list the number of bonds (or angles) for which Mogul statistics could be retrieved, the number of bonds (or angles) that are observed in the model and the number of bonds (or angles) that are defined in the chemical component dictionary. The Link column lists molecule types, if any, to which the group is linked. The Z score for a bond length (or angle) is the number of standard deviations the observed value is removed from the expected value. A bond length (or angle) with $|Z| > 2$ is considered an outlier worth inspection. RMSZ is the root-mean-square of all Z scores of the bond lengths (or angles).

Mol	Type	Chain	Res	Link	Bond lengths			Bond angles		
					Counts	RMSZ	# $ Z > 2$	Counts	RMSZ	# $ Z > 2$
2	HEM	A	500	1,4	30,50,50	1.99	8 (26%)	24,82,82	2.35	8 (33%)
3	H4B	A	600	-	13,18,18	0.88	0	11,26,26	2.75	6 (54%)
4	HLW	A	800	2	24,26,26	1.55	4 (16%)	30,33,33	2.09	8 (26%)
5	ACT	A	860	-	1,3,3	1.41	0	0,3,3	0.00	-
5	ACT	A	861	-	1,3,3	1.80	0	0,3,3	0.00	-
6	GOL	A	880	-	5,5,5	0.33	0	5,5,5	0.47	0
2	HEM	B	500	1,4	30,50,50	1.96	5 (16%)	24,82,82	2.48	11 (45%)
3	H4B	B	600	-	13,18,18	0.82	0	11,26,26	2.49	4 (36%)
4	HLW	B	800	2	24,26,26	1.44	4 (16%)	30,33,33	1.99	10 (33%)
5	ACT	B	860	-	1,3,3	1.21	0	0,3,3	0.00	-
5	ACT	B	861	-	1,3,3	1.40	0	0,3,3	0.00	-
6	GOL	B	880	-	5,5,5	0.35	0	5,5,5	0.38	0

In the following table, the Chirals column lists the number of chiral outliers, the number of chiral centers analysed, the number of these observed in the model and the number defined in the chemical component dictionary. Similar counts are reported in the Torsion and Rings columns. '-' means no outliers of that kind were identified.

Mol	Type	Chain	Res	Link	Chirals	Torsions	Rings
2	HEM	A	500	1,4	-	0/10/54/54	0/0/8/8
3	H4B	A	600	-	-	0/8/17/17	0/2/2/2
4	HLW	A	800	2	-	0/9/13/13	0/3/3/3
5	ACT	A	860	-	-	0/0/0/0	0/0/0/0
5	ACT	A	861	-	-	0/0/0/0	0/0/0/0
6	GOL	A	880	-	-	0/4/4/4	0/0/0/0

Continued on next page...

Continued from previous page...

Mol	Type	Chain	Res	Link	Chirals	Torsions	Rings
2	HEM	B	500	1,4	-	0/10/54/54	0/0/8/8
3	H4B	B	600	-	-	0/8/17/17	0/2/2/2
4	HLW	B	800	2	-	0/9/13/13	0/3/3/3
5	ACT	B	860	-	-	0/0/0/0	0/0/0/0
5	ACT	B	861	-	-	0/0/0/0	0/0/0/0
6	GOL	B	880	-	-	0/4/4/4	0/0/0/0

All (21) bond length outliers are listed below:

Mol	Chain	Res	Type	Atoms	Z	Observed(Å)	Ideal(Å)
2	B	500	HEM	C3B-C4B	-6.16	1.46	1.51
2	A	500	HEM	C3B-C4B	-5.55	1.46	1.51
2	B	500	HEM	C3D-C4D	-4.85	1.45	1.51
2	A	500	HEM	C3D-C4D	-4.65	1.45	1.51
4	B	800	HLW	C04-N03	-3.72	1.33	1.39
2	B	500	HEM	C2C-C1C	-3.62	1.45	1.52
2	A	500	HEM	C2C-C1C	-3.55	1.45	1.52
4	A	800	HLW	C04-N03	-3.47	1.34	1.39
2	A	500	HEM	C2D-C1D	-2.12	1.44	1.51
2	B	500	HEM	C2D-C1D	-2.04	1.45	1.51
2	B	500	HEM	C3B-CAB	2.05	1.55	1.51
2	A	500	HEM	CAA-C2A	2.08	1.55	1.52
2	A	500	HEM	C3C-CAC	2.20	1.55	1.51
4	B	800	HLW	C12-N13	2.35	1.35	1.32
4	B	800	HLW	C3'-CL7'	2.62	1.80	1.74
4	A	800	HLW	C3'-CL7'	2.65	1.80	1.74
2	A	500	HEM	C4C-NC	2.71	1.39	1.36
2	A	500	HEM	C1C-NC	2.97	1.39	1.36
4	A	800	HLW	C12-N13	3.30	1.37	1.32
4	B	800	HLW	C12-N11	4.37	1.36	1.31
4	A	800	HLW	C12-N11	4.75	1.36	1.31

All (47) bond angle outliers are listed below:

Mol	Chain	Res	Type	Atoms	Z	Observed(°)	Ideal(°)
2	B	500	HEM	CBA-CAA-C2A	-5.00	103.57	112.53
4	A	800	HLW	C15-C16-N11	-4.33	118.96	123.90
4	A	800	HLW	N11-C12-N13	-4.02	121.39	126.44
4	A	800	HLW	C04-N03-C12	-3.86	121.38	125.61
4	B	800	HLW	C15-C16-N11	-3.84	119.52	123.90
4	B	800	HLW	N11-C12-N13	-3.73	121.76	126.44
3	A	600	H4B	N3-C2-N1	-3.59	119.65	125.53

Continued on next page...

Continued from previous page...

Mol	Chain	Res	Type	Atoms	Z	Observed(°)	Ideal(°)
2	A	500	HEM	CBA-CAA-C2A	-3.14	106.90	112.53
2	B	500	HEM	CBD-CAD-C3D	-3.09	104.55	113.55
3	B	600	H4B	N3-C2-N1	-3.04	120.54	125.53
4	B	800	HLW	C04-N03-C12	-2.97	122.36	125.61
2	A	500	HEM	CBD-CAD-C3D	-2.78	105.45	113.55
4	B	800	HLW	C15-C14-N13	-2.19	119.74	122.41
2	B	500	HEM	C3B-C4B-NB	-2.16	107.51	111.63
4	A	800	HLW	C16-C15-C14	2.04	119.55	117.41
2	B	500	HEM	C2C-C1C-CHC	2.05	126.81	123.68
4	B	800	HLW	C05-N01-C02	2.09	112.45	106.06
4	B	800	HLW	N11-C12-N03	2.19	118.72	115.16
3	A	600	H4B	N2-C2-N3	2.29	120.98	117.20
2	A	500	HEM	C2D-C3D-C4D	2.43	105.61	101.50
2	B	500	HEM	C2D-C3D-C4D	2.47	105.69	101.50
4	A	800	HLW	C12-N13-C14	2.49	118.51	115.26
3	A	600	H4B	C4A-C8A-N8	2.60	121.49	118.43
2	A	500	HEM	CMD-C2D-C3D	2.69	126.26	114.35
3	B	600	H4B	C2-N1-C8A	2.72	120.65	114.54
3	A	600	H4B	C2-N1-C8A	2.92	121.09	114.54
2	B	500	HEM	CMD-C2D-C3D	2.92	127.25	114.35
2	B	500	HEM	C3B-C4B-CHC	2.93	127.28	123.16
4	B	800	HLW	C12-N13-C14	3.16	119.39	115.26
4	B	800	HLW	N13-C12-N03	3.17	119.50	114.82
3	B	600	H4B	C4-N3-C2	3.21	120.39	115.94
2	B	500	HEM	CMB-C2B-C3B	3.37	124.94	116.53
4	A	800	HLW	C17-C14-N13	3.46	120.80	115.69
4	A	800	HLW	C04-N03-C02	3.53	115.11	108.53
4	B	800	HLW	C17-C14-N13	3.61	121.02	115.69
4	B	800	HLW	C04-N03-C02	3.65	115.32	108.53
2	B	500	HEM	CAD-C3D-C4D	3.98	126.51	112.47
3	A	600	H4B	C4-N3-C2	4.06	121.57	115.94
2	A	500	HEM	CAD-C3D-C2D	4.07	124.92	113.22
2	A	500	HEM	CMB-C2B-C3B	4.21	127.05	116.53
2	B	500	HEM	CMC-C2C-C3C	4.32	127.32	116.53
2	A	500	HEM	CMC-C2C-C3C	4.47	127.69	116.53
4	A	800	HLW	N13-C12-N03	4.65	121.70	114.82
2	A	500	HEM	CAD-C3D-C4D	4.82	129.46	112.47
2	B	500	HEM	CAD-C3D-C2D	5.06	127.75	113.22
3	A	600	H4B	C4-C4A-C8A	5.55	119.58	114.56
3	B	600	H4B	C4-C4A-C8A	5.70	119.72	114.56

There are no chirality outliers.

There are no torsion outliers.

There are no ring outliers.

6 monomers are involved in 11 short contacts:

Mol	Chain	Res	Type	Clashes	Symm-Clashes
2	A	500	HEM	4	0
3	A	600	H4B	1	0
4	A	800	HLW	1	0
5	A	861	ACT	2	0
2	B	500	HEM	1	0
4	B	800	HLW	3	0

5.7 Other polymers [i](#)

There are no such residues in this entry.

5.8 Polymer linkage issues [i](#)

There are no chain breaks in this entry.

6 Fit of model and data

6.1 Protein, DNA and RNA chains

In the following table, the column labelled ‘#RSRZ> 2’ contains the number (and percentage) of RSRZ outliers, followed by percent RSRZ outliers for the chain as percentile scores relative to all X-ray entries and entries of similar resolution. The OWAB column contains the minimum, median, 95th percentile and maximum values of the occupancy-weighted average B-factor per residue. The column labelled ‘Q< 0.9’ lists the number of (and percentage) of residues with an average occupancy less than 0.9.

Mol	Chain	Analysed	<RSRZ>	#RSRZ>2	OWAB(Å ²)	Q<0.9
1	A	404/443 (91%)	0.16	24 (5%) 26 28	28, 43, 73, 102	0
1	B	403/443 (90%)	0.18	21 (5%) 31 34	30, 46, 77, 116	0
All	All	807/886 (91%)	0.17	45 (5%) 28 31	28, 44, 74, 116	0

All (45) RSRZ outliers are listed below:

Mol	Chain	Res	Type	RSRZ
1	A	67	GLY	6.9
1	B	259	GLN	5.7
1	A	122	ALA	5.4
1	A	259	GLN	4.5
1	A	121	PRO	4.3
1	A	160	ALA	4.2
1	B	110	LYS	4.1
1	A	69	LYS	4.0
1	B	121	PRO	3.9
1	A	239	GLY	3.9
1	B	146	GLN	3.8
1	A	109	ARG	3.8
1	B	260	ASP	3.8
1	A	123	GLU	3.6
1	A	126	LEU	3.3
1	B	141	LYS	3.3
1	B	144	GLY	3.3
1	A	156	GLU	3.3
1	A	230	ILE	3.2
1	A	124	GLN	3.2
1	B	122	ALA	3.2
1	A	338	VAL	3.2
1	B	140	ILE	2.9
1	A	260	ASP	2.9

Continued on next page...

Continued from previous page...

Mol	Chain	Res	Type	RSRZ
1	B	142	ARG	2.8
1	B	123	GLU	2.7
1	B	338	VAL	2.6
1	B	99	ARG	2.6
1	B	277	ILE	2.5
1	A	261	GLY	2.5
1	B	451	VAL	2.5
1	B	362	THR	2.5
1	B	337	ALA	2.5
1	A	355	PHE	2.4
1	B	454	ILE	2.4
1	A	449	TRP	2.3
1	B	145	SER	2.3
1	A	390	ARG	2.3
1	A	336	PRO	2.3
1	A	337	ALA	2.2
1	A	238	PRO	2.2
1	B	232	VAL	2.2
1	B	239	GLY	2.2
1	A	454	ILE	2.2
1	A	299	ASP	2.0

6.2 Non-standard residues in protein, DNA, RNA chains

In the following table, the Atoms column lists the number of modelled atoms in the group and the number defined in the chemical component dictionary. LLDF column lists the quality of electron density of the group with respect to its neighbouring residues in protein, DNA or RNA chains. The B-factors column lists the minimum, median, 95th percentile and maximum values of B factors of atoms in the group. The column labelled 'Q< 0.9' lists the number of atoms with occupancy less than 0.9.

Mol	Type	Chain	Res	Atoms	RSCC	RSR	LLDF	B-factors(Å ²)	Q<0.9
1	CAS	B	384	9/10	0.96	0.10	-	53,61,84,138	0
1	CAS	A	384	9/10	0.94	0.10	-	36,42,80,95	0

6.3 Carbohydrates

There are no carbohydrates in this entry.

6.4 Ligands [i](#)

In the following table, the Atoms column lists the number of modelled atoms in the group and the number defined in the chemical component dictionary. LLDF column lists the quality of electron density of the group with respect to its neighbouring residues in protein, DNA or RNA chains. The B-factors column lists the minimum, median, 95th percentile and maximum values of B factors of atoms in the group. The column labelled 'Q< 0.9' lists the number of atoms with occupancy less than 0.9.

Mol	Type	Chain	Res	Atoms	RSCC	RSR	LLDF	B-factors(Å ²)	Q<0.9
5	ACT	B	860	4/4	0.87	0.21	5.28	64,67,69,77	0
6	GOL	A	880	6/6	0.87	0.38	4.23	75,79,83,84	0
5	ACT	B	861	4/4	0.78	0.36	3.67	73,73,76,80	0
5	ACT	A	861	4/4	0.74	0.30	3.65	59,60,66,69	0
6	GOL	B	880	6/6	0.88	0.25	2.76	63,67,69,71	0
4	HLW	B	800	24/24	0.96	0.25	1.45	29,40,85,144	0
5	ACT	A	860	4/4	0.93	0.12	1.20	56,60,61,63	0
2	HEM	A	500	43/43	0.98	0.21	0.93	23,29,47,51	0
4	HLW	A	800	24/24	0.94	0.22	0.70	32,39,84,131	0
2	HEM	B	500	43/43	0.99	0.17	0.62	30,35,48,60	0
3	H4B	B	600	17/17	0.97	0.15	0.33	39,43,49,52	0
3	H4B	A	600	17/17	0.97	0.13	-0.19	36,43,49,50	0
7	ZN	A	900	1/1	0.99	0.07	-1.62	45,45,45,45	0

6.5 Other polymers [i](#)

There are no such residues in this entry.