



wwPDB X-ray Structure Validation Summary Report ⓘ

Feb 19, 2016 – 10:30 PM GMT

PDB ID : 5D56
Title : In meso in situ serial X-ray crystallography structure of diacylglycerol kinase, DgkA, at 100 K
Authors : Huang, C.-Y.; Howe, N.; Olieric, V.; Warshamanage, R.; Diederichs, K.; Wang, M.; Caffrey, M.
Deposited on : 2015-08-10
Resolution : 2.80 Å(reported)

This is a wwPDB X-ray Structure Validation Summary Report for a publicly released PDB entry.
We welcome your comments at validation@mail.wwpdb.org
A user guide is available at
<http://wwpdb.org/validation/2016/XrayValidationReportHelp>
with specific help available everywhere you see the ⓘ symbol.

The following versions of software and data (see [references ⓘ](#)) were used in the production of this report:

MolProbity : 4.02b-467
Mogul : 1.7.1 (RC1), CSD as537be (2016)
Xtriage (Phenix) : 1.9-1692
EDS : rb-20026982
Percentile statistics : 20151230.v01 (using entries in the PDB archive December 30th 2015)
Refmac : 5.8.0135
CCP4 : 6.5.0
Ideal geometry (proteins) : Engh & Huber (2001)
Ideal geometry (DNA, RNA) : Parkinson et al. (1996)
Validation Pipeline (wwPDB-VP) : rb-20026982

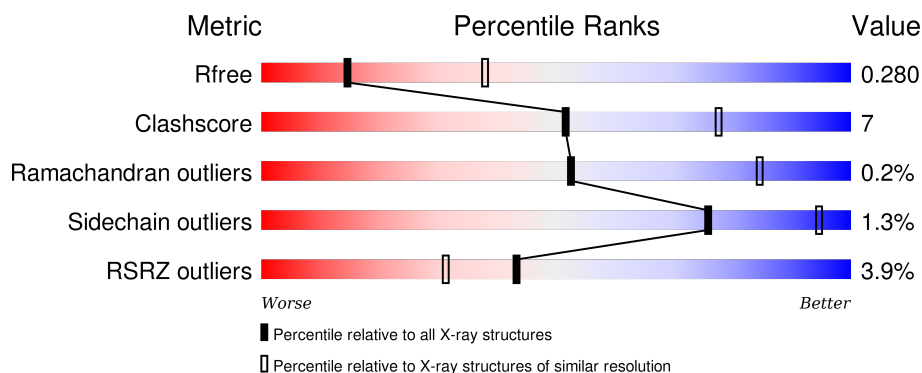
1 Overall quality at a glance

The following experimental techniques were used to determine the structure:

X-RAY DIFFRACTION

The reported resolution of this entry is 2.80 Å.

Percentile scores (ranging between 0-100) for global validation metrics of the entry are shown in the following graphic. The table shows the number of entries on which the scores are based.




Metric	Whole archive (#Entries)	Similar resolution (#Entries, resolution range(Å))
R_{free}	91344	2393 (2.80-2.80)
Clashscore	102246	2827 (2.80-2.80)
Ramachandran outliers	100387	2782 (2.80-2.80)
Sidechain outliers	100360	2784 (2.80-2.80)
RSRZ outliers	91569	2404 (2.80-2.80)

The table below summarises the geometric issues observed across the polymeric chains and their fit to the electron density. The red, orange, yellow and green segments on the lower bar indicate the fraction of residues that contain outliers for ≥ 3 , 2, 1 and 0 types of geometric quality criteria. A grey segment represents the fraction of residues that are not modelled. The numeric value for each fraction is indicated below the corresponding segment, with a dot representing fractions $\leq 5\%$. The upper red bar (where present) indicates the fraction of residues that have poor fit to the electron density. The numeric value is given above the bar.

Mol	Chain	Length	Quality of chain
1	A	130	<div> <div>2%</div> <div>76% 13% 11%</div> </div>
1	B	130	<div> <div>3%</div> <div>63% 12% 25%</div> </div>
1	C	130	<div> <div>2%</div> <div>65% • • 31%</div> </div>
1	D	130	<div> <div>72% 10% • 17%</div> </div>
1	E	130	<div> <div>8%</div> <div>56% 11% • 32%</div> </div>

Continued on next page...

Continued from previous page...

Mol	Chain	Length	Quality of chain
1	F	130	

The following table lists non-polymeric compounds, carbohydrate monomers and non-standard residues in protein, DNA, RNA chains that are outliers for geometric or electron-density-fit criteria:

Mol	Type	Chain	Res	Chirality	Geometry	Clashes	Electron density
2	78M	A	201	-	-	-	X
2	78M	A	202	-	-	-	X
2	78M	A	203	-	-	-	X
2	78M	A	204	-	-	-	X
2	78M	B	201	-	-	-	X
2	78M	B	203	-	-	-	X
2	78M	C	201	-	-	-	X
2	78M	D	204	-	-	-	X
2	78M	D	206	-	-	-	X
5	ACT	D	203	-	-	-	X

2 Entry composition

There are 6 unique types of molecules in this entry. The entry contains 4717 atoms, of which 0 are hydrogens and 0 are deuteriums.

In the tables below, the ZeroOcc column contains the number of atoms modelled with zero occupancy, the AltConf column contains the number of residues with at least one atom in alternate conformation and the Trace column contains the number of residues modelled with at most 2 atoms.

- Molecule 1 is a protein called Diacylglycerol kinase.

Mol	Chain	Residues	Atoms					ZeroOcc	AltConf	Trace
1	A	116	Total	C	N	O	S	0	0	0
			887	580	149	155	3			
1	B	97	Total	C	N	O	S	0	1	0
			747	489	121	134	3			
1	C	90	Total	C	N	O	S	0	0	0
			681	443	112	123	3			
1	D	108	Total	C	N	O	S	0	0	0
			824	538	137	146	3			
1	E	89	Total	C	N	O	S	0	0	0
			670	437	108	122	3			
1	F	85	Total	C	N	O	S	0	0	0
			635	415	101	116	3			

There are 96 discrepancies between the modelled and reference sequences:

Chain	Residue	Modelled	Actual	Comment	Reference
A	-8	GLY	-	expression tag	UNP P0ABN1
A	-7	HIS	-	expression tag	UNP P0ABN1
A	-6	HIS	-	expression tag	UNP P0ABN1
A	-5	HIS	-	expression tag	UNP P0ABN1
A	-4	HIS	-	expression tag	UNP P0ABN1
A	-3	HIS	-	expression tag	UNP P0ABN1
A	-2	HIS	-	expression tag	UNP P0ABN1
A	-1	GLU	-	expression tag	UNP P0ABN1
A	0	LEU	-	expression tag	UNP P0ABN1
A	41	CYS	ALA	engineered mutation	UNP P0ABN1
A	46	ALA	CYS	engineered mutation	UNP P0ABN1
A	53	VAL	ILE	engineered mutation	UNP P0ABN1
A	70	LEU	ILE	engineered mutation	UNP P0ABN1
A	96	LEU	MET	engineered mutation	UNP P0ABN1
A	107	ASP	VAL	engineered mutation	UNP P0ABN1
A	113	ALA	CYS	engineered mutation	UNP P0ABN1
B	-8	GLY	-	expression tag	UNP P0ABN1

Continued on next page...

Continued from previous page...

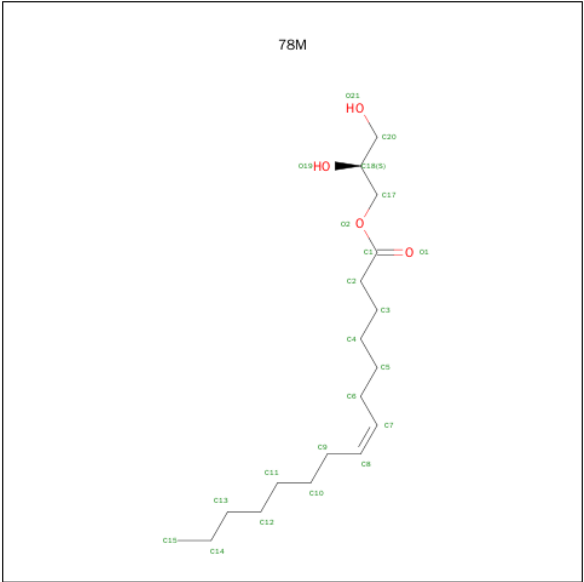
Chain	Residue	Modelled	Actual	Comment	Reference
B	-7	HIS	-	expression tag	UNP P0ABN1
B	-6	HIS	-	expression tag	UNP P0ABN1
B	-5	HIS	-	expression tag	UNP P0ABN1
B	-4	HIS	-	expression tag	UNP P0ABN1
B	-3	HIS	-	expression tag	UNP P0ABN1
B	-2	HIS	-	expression tag	UNP P0ABN1
B	-1	GLU	-	expression tag	UNP P0ABN1
B	0	LEU	-	expression tag	UNP P0ABN1
B	41	CYS	ALA	engineered mutation	UNP P0ABN1
B	46	ALA	CYS	engineered mutation	UNP P0ABN1
B	53	VAL	ILE	engineered mutation	UNP P0ABN1
B	70	LEU	ILE	engineered mutation	UNP P0ABN1
B	96	LEU	MET	engineered mutation	UNP P0ABN1
B	107	ASP	VAL	engineered mutation	UNP P0ABN1
B	113	ALA	CYS	engineered mutation	UNP P0ABN1
C	-8	GLY	-	expression tag	UNP P0ABN1
C	-7	HIS	-	expression tag	UNP P0ABN1
C	-6	HIS	-	expression tag	UNP P0ABN1
C	-5	HIS	-	expression tag	UNP P0ABN1
C	-4	HIS	-	expression tag	UNP P0ABN1
C	-3	HIS	-	expression tag	UNP P0ABN1
C	-2	HIS	-	expression tag	UNP P0ABN1
C	-1	GLU	-	expression tag	UNP P0ABN1
C	0	LEU	-	expression tag	UNP P0ABN1
C	41	CYS	ALA	engineered mutation	UNP P0ABN1
C	46	ALA	CYS	engineered mutation	UNP P0ABN1
C	53	VAL	ILE	engineered mutation	UNP P0ABN1
C	70	LEU	ILE	engineered mutation	UNP P0ABN1
C	96	LEU	MET	engineered mutation	UNP P0ABN1
C	107	ASP	VAL	engineered mutation	UNP P0ABN1
C	113	ALA	CYS	engineered mutation	UNP P0ABN1
D	-8	GLY	-	expression tag	UNP P0ABN1
D	-7	HIS	-	expression tag	UNP P0ABN1
D	-6	HIS	-	expression tag	UNP P0ABN1
D	-5	HIS	-	expression tag	UNP P0ABN1
D	-4	HIS	-	expression tag	UNP P0ABN1
D	-3	HIS	-	expression tag	UNP P0ABN1
D	-2	HIS	-	expression tag	UNP P0ABN1
D	-1	GLU	-	expression tag	UNP P0ABN1
D	0	LEU	-	expression tag	UNP P0ABN1
D	41	CYS	ALA	engineered mutation	UNP P0ABN1
D	46	ALA	CYS	engineered mutation	UNP P0ABN1

Continued on next page...

Continued from previous page...

Chain	Residue	Modelled	Actual	Comment	Reference
D	53	VAL	ILE	engineered mutation	UNP P0ABN1
D	70	LEU	ILE	engineered mutation	UNP P0ABN1
D	96	LEU	MET	engineered mutation	UNP P0ABN1
D	107	ASP	VAL	engineered mutation	UNP P0ABN1
D	113	ALA	CYS	engineered mutation	UNP P0ABN1
E	-8	GLY	-	expression tag	UNP P0ABN1
E	-7	HIS	-	expression tag	UNP P0ABN1
E	-6	HIS	-	expression tag	UNP P0ABN1
E	-5	HIS	-	expression tag	UNP P0ABN1
E	-4	HIS	-	expression tag	UNP P0ABN1
E	-3	HIS	-	expression tag	UNP P0ABN1
E	-2	HIS	-	expression tag	UNP P0ABN1
E	-1	GLU	-	expression tag	UNP P0ABN1
E	0	LEU	-	expression tag	UNP P0ABN1
E	41	CYS	ALA	engineered mutation	UNP P0ABN1
E	46	ALA	CYS	engineered mutation	UNP P0ABN1
E	53	VAL	ILE	engineered mutation	UNP P0ABN1
E	70	LEU	ILE	engineered mutation	UNP P0ABN1
E	96	LEU	MET	engineered mutation	UNP P0ABN1
E	107	ASP	VAL	engineered mutation	UNP P0ABN1
E	113	ALA	CYS	engineered mutation	UNP P0ABN1
F	-8	GLY	-	expression tag	UNP P0ABN1
F	-7	HIS	-	expression tag	UNP P0ABN1
F	-6	HIS	-	expression tag	UNP P0ABN1
F	-5	HIS	-	expression tag	UNP P0ABN1
F	-4	HIS	-	expression tag	UNP P0ABN1
F	-3	HIS	-	expression tag	UNP P0ABN1
F	-2	HIS	-	expression tag	UNP P0ABN1
F	-1	GLU	-	expression tag	UNP P0ABN1
F	0	LEU	-	expression tag	UNP P0ABN1
F	41	CYS	ALA	engineered mutation	UNP P0ABN1
F	46	ALA	CYS	engineered mutation	UNP P0ABN1
F	53	VAL	ILE	engineered mutation	UNP P0ABN1
F	70	LEU	ILE	engineered mutation	UNP P0ABN1
F	96	LEU	MET	engineered mutation	UNP P0ABN1
F	107	ASP	VAL	engineered mutation	UNP P0ABN1
F	113	ALA	CYS	engineered mutation	UNP P0ABN1

- Molecule 2 is (2S)-2,3-DIHYDROXYPROPYL(7Z)-PENTADEC-7-ENOATE (three-letter code: 78M) (formula: C₁₈H₃₄O₄).

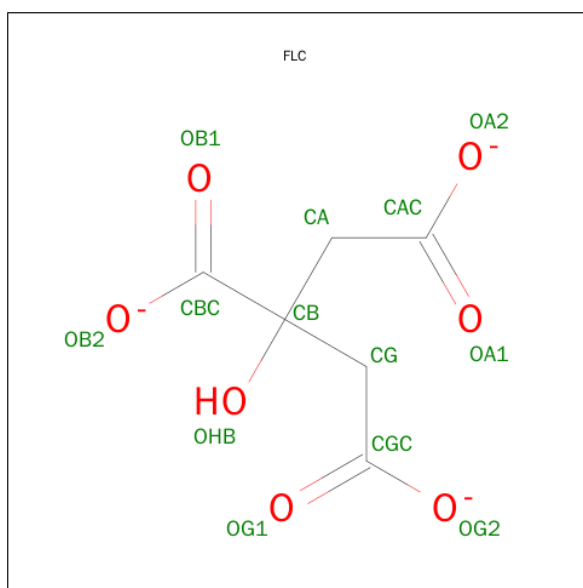


Mol	Chain	Residues	Atoms			ZeroOcc	AltConf
2	A	1	Total	C	O	0	0
			22	18	4		
2	A	1	Total	C	O	0	0
			22	18	4		
2	A	1	Total	C	O	0	0
			22	18	4		
2	A	1	Total	C	O	0	0
			22	18	4		
2	B	1	Total	C	O	0	0
			22	18	4		
2	B	1	Total	C	O	0	0
			22	18	4		
2	B	1	Total	C	O	0	0
			22	18	4		
2	C	1	Total	C	O	0	0
			22	18	4		
2	D	1	Total	C	O	0	0
			22	18	4		
2	D	1	Total	C	O	0	0
			22	18	4		
2	D	1	Total	C	O	0	0
			22	18	4		

- Molecule 3 is ZINC ION (three-letter code: ZN) (formula: Zn).

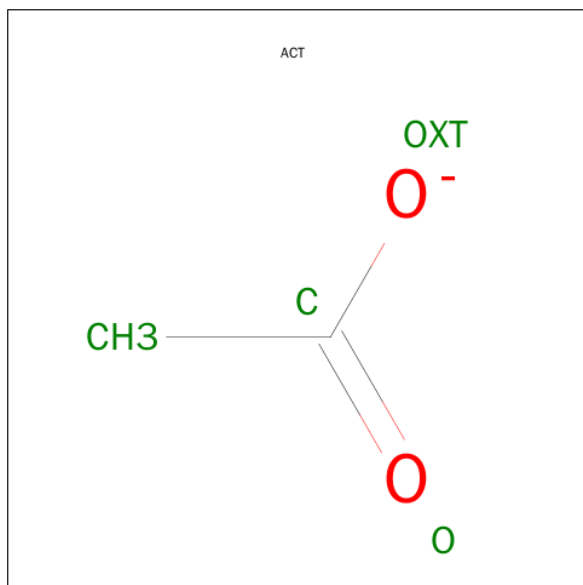
Mol	Chain	Residues	Atoms		ZeroOcc	AltConf
3	D	1	Total	Zn	0	0
			1	1		

- Molecule 4 is CITRATE ANION (three-letter code: FLC) (formula: $C_6H_5O_7$).



Mol	Chain	Residues	Atoms			ZeroOcc	AltConf
4	D	1	Total	C	O	0	0
			13	6	7		

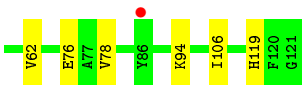
- Molecule 5 is ACETATE ION (three-letter code: ACT) (formula: $C_2H_3O_2$).



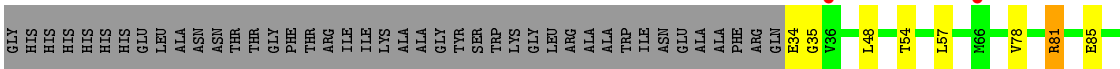
Mol	Chain	Residues	Atoms			ZeroOcc	AltConf
5	D	1	Total	C	O	0	0
			4	2	2		

- Molecule 6 is water.

Mol	Chain	Residues	Atoms		ZeroOcc	AltConf
6	A	3	Total 3	O 3	0	0
6	B	1	Total 1	O 1	0	0
6	D	5	Total 5	O 5	0	0
6	E	4	Total 4	O 4	0	0



● Molecule 1: Diacylglycerol kinase



4 Data and refinement statistics

Property	Value	Source
Space group	P 21 21 21	Depositor
Cell constants a, b, c, α , β , γ	74.80Å 93.04Å 143.05Å 90.00° 90.00° 90.00°	Depositor
Resolution (Å)	46.52 – 2.80 46.52 – 2.77	Depositor EDS
% Data completeness (in resolution range)	97.0 (46.52-2.80) 97.0 (46.52-2.77)	Depositor EDS
R_{merge}	(Not available)	Depositor
R_{sym}	(Not available)	Depositor
$\langle I/\sigma(I) \rangle$ ¹	1.74 (at 2.77Å)	Xtriage
Refinement program	PHENIX (phenix.refine: 1.9_1692)	Depositor
R, R_{free}	0.243 , 0.283 0.249 , 0.280	Depositor DCC
R_{free} test set	1265 reflections (5.34%)	DCC
Wilson B-factor (Å ²)	87.5	Xtriage
Anisotropy	0.071	Xtriage
Bulk solvent k_{sol} (e/Å ³), B_{sol} (Å ²)	0.29 , 67.3	EDS
Estimated twinning fraction	No twinning to report.	Xtriage
L-test for twinning ²	$\langle L \rangle = 0.47$, $\langle L^2 \rangle = 0.29$	Xtriage
Outliers	5 of 25203 reflections (0.020%)	Xtriage
F_o, F_c correlation	0.94	EDS
Total number of atoms	4717	wwPDB-VP
Average B, all atoms (Å ²)	94.0	wwPDB-VP

Xtriage's analysis on translational NCS is as follows: *The largest off-origin peak in the Patterson function is 9.70% of the height of the origin peak. No significant pseudotranslation is detected.*

¹Intensities estimated from amplitudes.

²Theoretical values of $\langle |L| \rangle$, $\langle L^2 \rangle$ for acentric reflections are 0.5, 0.375 respectively for untwinned datasets, and 0.333, 0.2 for perfectly twinned datasets.

5 Model quality [i](#)

5.1 Standard geometry [i](#)

Bond lengths and bond angles in the following residue types are not validated in this section: 78M, ZN, FLC, ACT

The Z score for a bond length (or angle) is the number of standard deviations the observed value is removed from the expected value. A bond length (or angle) with $|Z| > 5$ is considered an outlier worth inspection. RMSZ is the root-mean-square of all Z scores of the bond lengths (or angles).

Mol	Chain	Bond lengths		Bond angles	
		RMSZ	$\# Z > 5$	RMSZ	$\# Z > 5$
1	A	0.22	0/903	0.37	0/1229
1	B	0.23	0/762	0.36	0/1042
1	C	0.22	0/690	0.36	0/941
1	D	0.22	0/839	0.36	0/1144
1	E	0.22	0/679	0.39	0/927
1	F	0.28	0/642	0.43	0/879
All	All	0.23	0/4515	0.38	0/6162

There are no bond length outliers.

There are no bond angle outliers.

There are no chirality outliers.

There are no planarity outliers.

5.2 Too-close contacts [i](#)

In the following table, the Non-H and H(model) columns list the number of non-hydrogen atoms and hydrogen atoms in the chain respectively. The H(added) column lists the number of hydrogen atoms added and optimized by MolProbity. The Clashes column lists the number of clashes within the asymmetric unit, whereas Symm-Clashes lists symmetry related clashes.

Mol	Chain	Non-H	H(model)	H(added)	Clashes	Symm-Clashes
1	A	887	0	922	17	0
1	B	747	0	776	11	0
1	C	681	0	716	10	0
1	D	824	0	850	11	0
1	E	670	0	703	12	0
1	F	635	0	676	9	0
2	A	88	0	136	15	0

Continued on next page...

Continued from previous page...

Mol	Chain	Non-H	H(model)	H(added)	Clashes	Symm-Clashes
2	B	66	0	102	6	0
2	C	22	0	34	0	0
2	D	66	0	102	3	0
3	D	1	0	0	0	0
4	D	13	0	5	0	0
5	D	4	0	3	0	0
6	A	3	0	0	0	0
6	B	1	0	0	0	0
6	D	5	0	0	1	0
6	E	4	0	0	0	0
All	All	4717	0	5025	66	0

The all-atom clashscore is defined as the number of clashes found per 1000 atoms (including hydrogen atoms). The all-atom clashscore for this structure is 7.

The worst 5 of 66 close contacts within the same asymmetric unit are listed below, sorted by their clash magnitude.

Atom-1	Atom-2	Interatomic distance (Å)	Clash overlap (Å)
1:F:54:THR:HA	1:F:57:LEU:HB2	1.71	0.72
1:A:88:GLU:OE2	1:A:88:GLU:N	2.26	0.68
1:A:54:THR:HG23	1:A:115:LEU:HD13	1.79	0.62
1:F:54:THR:HB	1:F:115:LEU:HD13	1.81	0.62
1:F:34:GLU:N	1:F:34:GLU:OE1	2.33	0.62

There are no symmetry-related clashes.

5.3 Torsion angles [i](#)

5.3.1 Protein backbone [i](#)

In the following table, the Percentiles column shows the percent Ramachandran outliers of the chain as a percentile score with respect to all X-ray entries followed by that with respect to entries of similar resolution.

The Analysed column shows the number of residues for which the backbone conformation was analysed, and the total number of residues.

Mol	Chain	Analysed	Favoured	Allowed	Outliers	Percentiles	
1	A	114/130 (88%)	114 (100%)	0	0	100	100
1	B	96/130 (74%)	96 (100%)	0	0	100	100

Continued on next page...

Continued from previous page...

Mol	Chain	Analysed	Favoured	Allowed	Outliers	Percentiles	
1	C	88/130 (68%)	88 (100%)	0	0	100	100
1	D	106/130 (82%)	106 (100%)	0	0	100	100
1	E	87/130 (67%)	85 (98%)	1 (1%)	1 (1%)	17	50
1	F	83/130 (64%)	83 (100%)	0	0	100	100
All	All	574/780 (74%)	572 (100%)	1 (0%)	1 (0%)	52	84

All (1) Ramachandran outliers are listed below:

Mol	Chain	Res	Type
1	E	50	VAL

5.3.2 Protein sidechains ⓘ

In the following table, the Percentiles column shows the percent sidechain outliers of the chain as a percentile score with respect to all X-ray entries followed by that with respect to entries of similar resolution.

The Analysed column shows the number of residues for which the sidechain conformation was analysed, and the total number of residues.

Mol	Chain	Analysed	Rotameric	Outliers	Percentiles	
1	A	90/102 (88%)	89 (99%)	1 (1%)	80	95
1	B	79/102 (78%)	79 (100%)	0	100	100
1	C	73/102 (72%)	72 (99%)	1 (1%)	74	94
1	D	84/102 (82%)	83 (99%)	1 (1%)	78	95
1	E	72/102 (71%)	71 (99%)	1 (1%)	74	94
1	F	69/102 (68%)	67 (97%)	2 (3%)	50	83
All	All	467/612 (76%)	461 (99%)	6 (1%)	76	94

5 of 6 residues with a non-rotameric sidechain are listed below:

Mol	Chain	Res	Type
1	D	22	ARG
1	F	81	ARG
1	E	48	LEU
1	C	32	ARG
1	F	48	LEU

Some sidechains can be flipped to improve hydrogen bonding and reduce clashes. All (2) such sidechains are listed below:

Mol	Chain	Res	Type
1	D	87	HIS
1	D	119	HIS

5.3.3 RNA ⓘ

There are no RNA molecules in this entry.

5.4 Non-standard residues in protein, DNA, RNA chains ⓘ

There are no non-standard protein/DNA/RNA residues in this entry.

5.5 Carbohydrates ⓘ

There are no carbohydrates in this entry.

5.6 Ligand geometry ⓘ

Of 14 ligands modelled in this entry, 1 is monoatomic - leaving 13 for Mogul analysis.

In the following table, the Counts columns list the number of bonds (or angles) for which Mogul statistics could be retrieved, the number of bonds (or angles) that are observed in the model and the number of bonds (or angles) that are defined in the chemical component dictionary. The Link column lists molecule types, if any, to which the group is linked. The Z score for a bond length (or angle) is the number of standard deviations the observed value is removed from the expected value. A bond length (or angle) with $|Z| > 2$ is considered an outlier worth inspection. RMSZ is the root-mean-square of all Z scores of the bond lengths (or angles).

Mol	Type	Chain	Res	Link	Bond lengths			Bond angles		
					Counts	RMSZ	$\# Z > 2$	Counts	RMSZ	$\# Z > 2$
2	78M	A	201	-	21,21,21	0.85	1 (4%)	22,22,22	0.79	1 (4%)
2	78M	A	202	-	21,21,21	0.88	1 (4%)	22,22,22	0.85	1 (4%)
2	78M	A	203	-	21,21,21	0.86	1 (4%)	22,22,22	0.84	1 (4%)
2	78M	A	204	-	21,21,21	0.87	1 (4%)	22,22,22	0.82	1 (4%)
2	78M	B	201	-	21,21,21	0.89	1 (4%)	22,22,22	0.85	1 (4%)
2	78M	B	202	-	21,21,21	0.90	1 (4%)	22,22,22	0.80	1 (4%)
2	78M	B	203	-	21,21,21	0.90	1 (4%)	22,22,22	0.77	1 (4%)
2	78M	C	201	-	21,21,21	0.86	1 (4%)	22,22,22	0.79	1 (4%)

Mol	Type	Chain	Res	Link	Bond lengths			Bond angles		
					Counts	RMSZ	# Z > 2	Counts	RMSZ	# Z > 2
4	FLC	D	202	-	3,12,12	1.12	0	3,17,17	2.45	1 (33%)
5	ACT	D	203	-	0,3,3	0.00	-	0,3,3	0.00	-
2	78M	D	204	-	21,21,21	0.87	1 (4%)	22,22,22	0.82	1 (4%)
2	78M	D	205	-	21,21,21	0.87	1 (4%)	22,22,22	0.79	1 (4%)
2	78M	D	206	-	21,21,21	0.89	1 (4%)	22,22,22	0.78	1 (4%)

In the following table, the Chirals column lists the number of chiral outliers, the number of chiral centers analysed, the number of these observed in the model and the number defined in the chemical component dictionary. Similar counts are reported in the Torsion and Rings columns. '-' means no outliers of that kind were identified.

Mol	Type	Chain	Res	Link	Chirals	Torsions	Rings
2	78M	A	201	-	-	0/21/21/21	0/0/0/0
2	78M	A	202	-	-	0/21/21/21	0/0/0/0
2	78M	A	203	-	-	0/21/21/21	0/0/0/0
2	78M	A	204	-	-	0/21/21/21	0/0/0/0
2	78M	B	201	-	-	0/21/21/21	0/0/0/0
2	78M	B	202	-	-	0/21/21/21	0/0/0/0
2	78M	B	203	-	-	0/21/21/21	0/0/0/0
2	78M	C	201	-	-	0/21/21/21	0/0/0/0
4	FLC	D	202	-	-	0/6/16/16	0/0/0/0
5	ACT	D	203	-	-	0/0/0/0	0/0/0/0
2	78M	D	204	-	-	0/21/21/21	0/0/0/0
2	78M	D	205	-	-	0/21/21/21	0/0/0/0
2	78M	D	206	-	-	0/21/21/21	0/0/0/0

The worst 5 of 11 bond length outliers are listed below:

Mol	Chain	Res	Type	Atoms	Z	Observed(Å)	Ideal(Å)
2	A	203	78M	O2-C1	2.51	1.40	1.33
2	D	205	78M	O2-C1	2.59	1.41	1.33
2	A	201	78M	O2-C1	2.64	1.41	1.33
2	D	204	78M	O2-C1	2.64	1.41	1.33
2	C	201	78M	O2-C1	2.66	1.41	1.33

The worst 5 of 12 bond angle outliers are listed below:

Mol	Chain	Res	Type	Atoms	Z	Observed(°)	Ideal(°)
2	A	203	78M	O2-C1-C2	2.58	119.77	111.85
2	C	201	78M	O2-C1-C2	2.59	119.83	111.85
2	D	206	78M	O2-C1-C2	2.64	119.99	111.85

Continued on next page...

Continued from previous page...

Mol	Chain	Res	Type	Atoms	Z	Observed(°)	Ideal(°)
2	B	203	78M	O2-C1-C2	2.67	120.06	111.85
2	D	205	78M	O2-C1-C2	2.68	120.09	111.85

There are no chirality outliers.

There are no torsion outliers.

There are no ring outliers.

9 monomers are involved in 23 short contacts:

Mol	Chain	Res	Type	Clashes	Symm-Clashes
2	A	201	78M	2	0
2	A	202	78M	6	0
2	A	203	78M	3	0
2	A	204	78M	7	0
2	B	201	78M	3	0
2	B	202	78M	2	0
2	B	203	78M	1	0
2	D	205	78M	1	0
2	D	206	78M	2	0

5.7 Other polymers [i](#)

There are no such residues in this entry.

5.8 Polymer linkage issues [i](#)

There are no chain breaks in this entry.

6 Fit of model and data ⓘ

6.1 Protein, DNA and RNA chains ⓘ

In the following table, the column labelled ‘#RSRZ> 2’ contains the number (and percentage) of RSRZ outliers, followed by percent RSRZ outliers for the chain as percentile scores relative to all X-ray entries and entries of similar resolution. The OWAB column contains the minimum, median, 95th percentile and maximum values of the occupancy-weighted average B-factor per residue. The column labelled ‘Q< 0.9’ lists the number of (and percentage) of residues with an average occupancy less than 0.9.

Mol	Chain	Analysed	<RSRZ>	#RSRZ>2	OWAB(Å ²)	Q<0.9
1	A	116/130 (89%)	-0.14	3 (2%) 59 47	61, 81, 134, 159	0
1	B	97/130 (74%)	-0.11	4 (4%) 41 29	58, 77, 131, 142	0
1	C	90/130 (69%)	-0.17	3 (3%) 50 38	61, 81, 124, 144	0
1	D	108/130 (83%)	-0.29	0 100 100	65, 83, 117, 140	0
1	E	89/130 (68%)	0.13	10 (11%) 7 3	66, 98, 144, 175	3 (3%)
1	F	85/130 (65%)	0.04	3 (3%) 48 35	70, 97, 150, 169	0
All	All	585/780 (75%)	-0.10	23 (3%) 43 31	58, 85, 138, 175	3 (0%)

The worst 5 of 23 RSRZ outliers are listed below:

Mol	Chain	Res	Type	RSRZ
1	E	33	GLN	8.4
1	C	86	TYR	5.1
1	F	36	VAL	5.0
1	E	48	LEU	4.9
1	B	27	ASN	4.6

6.2 Non-standard residues in protein, DNA, RNA chains ⓘ

There are no non-standard protein/DNA/RNA residues in this entry.

6.3 Carbohydrates ⓘ

There are no carbohydrates in this entry.

6.4 Ligands [i](#)

In the following table, the Atoms column lists the number of modelled atoms in the group and the number defined in the chemical component dictionary. LLDF column lists the quality of electron density of the group with respect to its neighbouring residues in protein, DNA or RNA chains. The B-factors column lists the minimum, median, 95th percentile and maximum values of B factors of atoms in the group. The column labelled 'Q< 0.9' lists the number of atoms with occupancy less than 0.9.

Mol	Type	Chain	Res	Atoms	RSCC	RSR	LLDF	B-factors(Å ²)	Q<0.9
2	78M	A	204	22/22	0.75	0.73	12.54	76,90,107,113	22
2	78M	B	203	22/22	0.79	0.41	7.91	73,97,127,135	22
2	78M	A	202	22/22	0.71	0.59	6.47	75,110,129,132	0
2	78M	A	201	22/22	0.91	0.49	5.87	66,93,115,119	0
2	78M	D	206	22/22	0.80	0.35	5.85	74,98,117,122	0
2	78M	B	201	22/22	0.62	0.42	4.49	120,135,145,156	0
2	78M	D	204	22/22	0.82	0.34	4.09	102,121,127,128	0
2	78M	C	201	22/22	0.69	0.29	2.99	64,101,134,144	0
2	78M	A	203	22/22	0.82	0.41	2.98	81,99,129,142	0
5	ACT	D	203	4/4	0.94	0.23	2.74	113,133,135,138	0
2	78M	D	205	22/22	0.75	0.37	1.33	107,131,144,155	0
4	FLC	D	202	13/13	0.58	0.25	-	161,180,191,191	0
3	ZN	D	201	1/1	0.94	0.04	-	120,120,120,120	1
2	78M	B	202	22/22	0.81	0.49	-	81,113,126,128	0

6.5 Other polymers [i](#)

There are no such residues in this entry.