



Full wwPDB X-ray Structure Validation Report ⓘ

Feb 1, 2016 – 01:31 AM GMT

PDB ID : 2DDF
Title : Crystal structure of TACE in complex with TAPI-2
Authors : Orth, P.
Deposited on : 2006-01-28
Resolution : 1.70 Å(reported)

This is a Full wwPDB X-ray Structure Validation Report for a publicly released PDB entry.
We welcome your comments at validation@mail.wwpdb.org
A user guide is available at
<http://wwpdb.org/validation/2016/XrayValidationReportHelp>
with specific help available everywhere you see the ⓘ symbol.

The following versions of software and data (see [references ⓘ](#)) were used in the production of this report:

MolProbity : 4.02b-467
Mogul : 1.7 (RC4), CSD as536be (2015)
Xtriage (Phenix) : 1.9-1692
EDS : rb-20026688
Percentile statistics : 20151230.v01 (using entries in the PDB archive December 30th 2015)
Refmac : 5.8.0135
CCP4 : 6.5.0
Ideal geometry (proteins) : Engh & Huber (2001)
Ideal geometry (DNA, RNA) : Parkinson et al. (1996)
Validation Pipeline (wwPDB-VP) : trunk26865

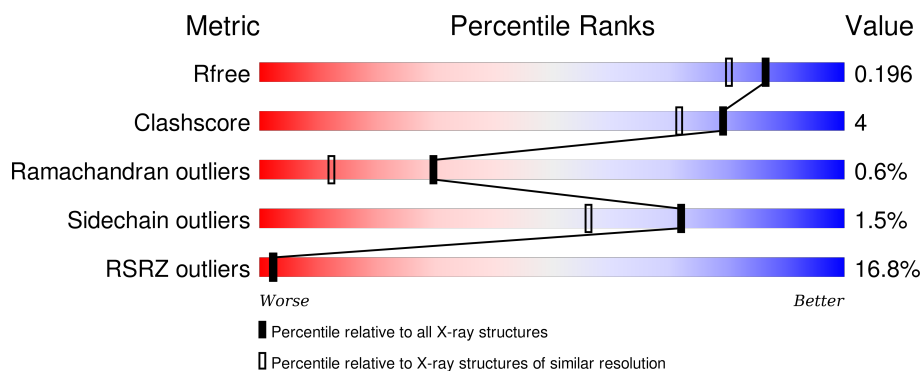
1 Overall quality at a glance ⓘ

The following experimental techniques were used to determine the structure:

X-RAY DIFFRACTION

The reported resolution of this entry is 1.70 Å.

Percentile scores (ranging between 0-100) for global validation metrics of the entry are shown in the following graphic. The table shows the number of entries on which the scores are based.



Metric	Whole archive (#Entries)	Similar resolution (#Entries, resolution range(Å))
R_{free}	91344	3190 (1.70-1.70)
Clashscore	102246	3585 (1.70-1.70)
Ramachandran outliers	100387	3527 (1.70-1.70)
Sidechain outliers	100360	3527 (1.70-1.70)
RSRZ outliers	91569	3200 (1.70-1.70)

The table below summarises the geometric issues observed across the polymeric chains and their fit to the electron density. The red, orange, yellow and green segments on the lower bar indicate the fraction of residues that contain outliers for ≥ 3 , 2, 1 and 0 types of geometric quality criteria. A grey segment represents the fraction of residues that are not modelled. The numeric value for each fraction is indicated below the corresponding segment, with a dot representing fractions $\leq 5\%$. The upper red bar (where present) indicates the fraction of residues that have poor fit to the electron density. The numeric value is given above the bar.

Mol	Chain	Length	Quality of chain
1	A	257	<div> <div>12%</div> <div>92%</div> <div>5% ..</div> </div>
1	B	257	<div> <div>21%</div> <div>91%</div> <div>7% .</div> </div>

The following table lists non-polymeric compounds, carbohydrate monomers and non-standard residues in protein, DNA, RNA chains that are outliers for geometric or electron-density-fit criteria:

Mol	Type	Chain	Res	Chirality	Geometry	Clashes	Electron density
7	IPA	B	501	-	-	-	X

2 Entry composition

There are 8 unique types of molecules in this entry. The entry contains 4323 atoms, of which 0 are hydrogens and 0 are deuteriums.

In the tables below, the ZeroOcc column contains the number of atoms modelled with zero occupancy, the AltConf column contains the number of residues with at least one atom in alternate conformation and the Trace column contains the number of residues modelled with at most 2 atoms.

- Molecule 1 is a protein called ADAM 17.

Mol	Chain	Residues	Atoms					ZeroOcc	AltConf	Trace
1	A	253	Total	C	N	O	S	0	1	0
			1969	1241	327	387	14			
1	B	254	Total	C	N	O	S	0	0	0
			1926	1215	323	375	13			

There are 6 discrepancies between the modelled and reference sequences:

Chain	Residue	Modelled	Actual	Comment	Reference
A	266	ALA	SER	ENGINEERED	UNP P78536
A	353	GLY	VAL	ENGINEERED	UNP P78536
A	452	GLN	ASN	ENGINEERED	UNP P78536
B	266	ALA	SER	ENGINEERED	UNP P78536
B	353	GLY	VAL	ENGINEERED	UNP P78536
B	452	GLN	ASN	ENGINEERED	UNP P78536

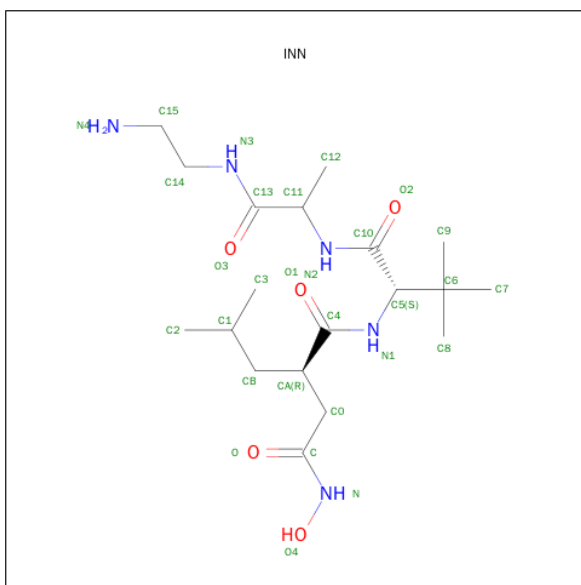
- Molecule 2 is ZINC ION (three-letter code: ZN) (formula: Zn).

Mol	Chain	Residues	Atoms		ZeroOcc	AltConf
2	B	1	Total	Zn	0	0
			1	1		
2	A	1	Total	Zn	0	0
			1	1		

- Molecule 3 is CALCIUM ION (three-letter code: CA) (formula: Ca).

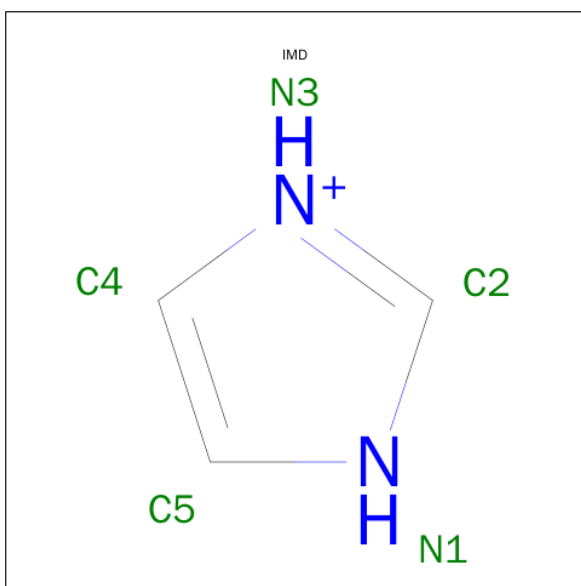
Mol	Chain	Residues	Atoms		ZeroOcc	AltConf
3	A	1	Total	Ca	0	0
			1	1		

- Molecule 4 is N-{(2R)-2-[2-(HYDROXYAMINO)-2-OXOETHYL]-4-METHYLPENTANOYL}-3-METHYL-L-VALYL-N-(2-AMINOETHYL)-L-ALANINAMIDE (three-letter code: INN) (formula: C₁₉H₃₇N₅O₅).



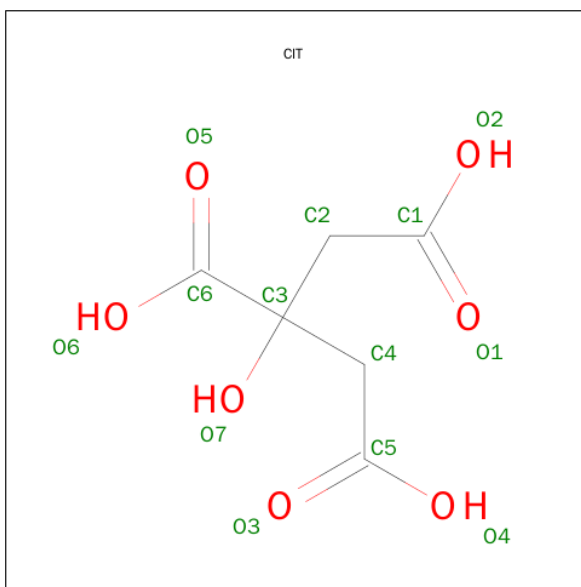
Mol	Chain	Residues	Atoms			ZeroOcc	AltConf
4	B	1	Total	C	N	O	
			29	19	5	5	
4	A	1	Total	C	N	O	
			29	19	5	5	

- Molecule 5 is IMIDAZOLE (three-letter code: IMD) (formula: $C_3H_5N_2$).



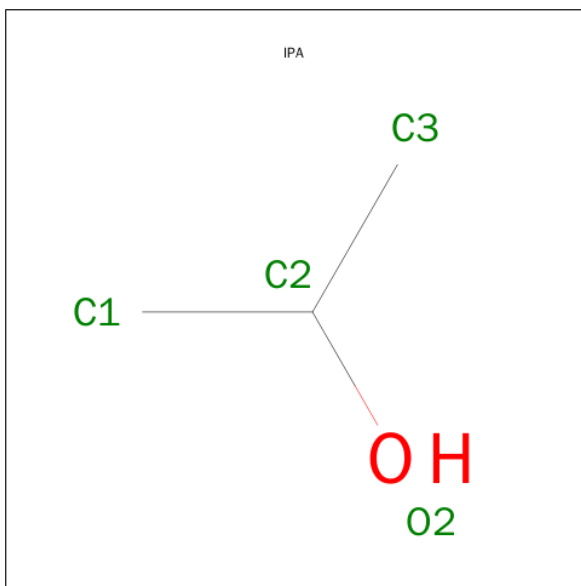
Mol	Chain	Residues	Atoms			ZeroOcc	AltConf
5	B	1	Total	C	N		
			5	3	2	0	0

- Molecule 6 is CITRIC ACID (three-letter code: CIT) (formula: $C_6H_8O_7$).



Mol	Chain	Residues	Atoms			ZeroOcc	AltConf
6	B	1	Total	C	O	0	0
			13	6	7		

- Molecule 7 is ISOPROPYL ALCOHOL (three-letter code: IPA) (formula: C_3H_8O).



Mol	Chain	Residues	Atoms			ZeroOcc	AltConf
7	B	1	Total	C	O	0	0
			4	3	1		
7	A	1	Total	C	O	0	0
			4	3	1		
7	B	1	Total	C	O	0	0
			4	3	1		

Continued on next page...

Continued from previous page...

Mol	Chain	Residues	Atoms			ZeroOcc	AltConf
7	B	1	Total	C	O	0	0
			4	3	1		

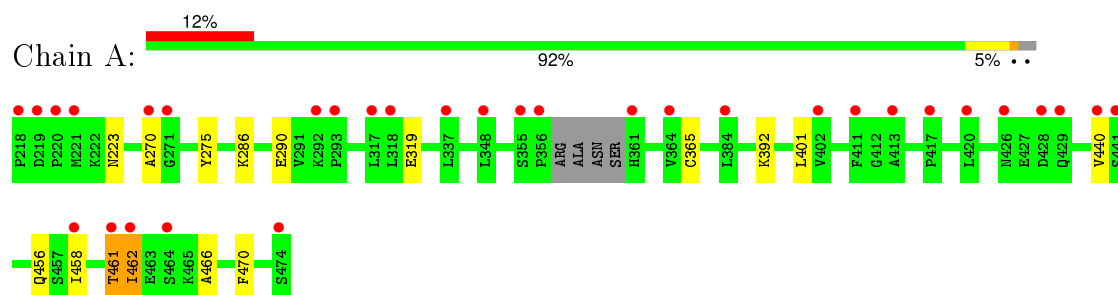
- Molecule 8 is water.

Mol	Chain	Residues	Atoms		ZeroOcc	AltConf
8	A	189	Total	O	0	0
			189	189		
8	B	144	Total	O	0	0
			144	144		

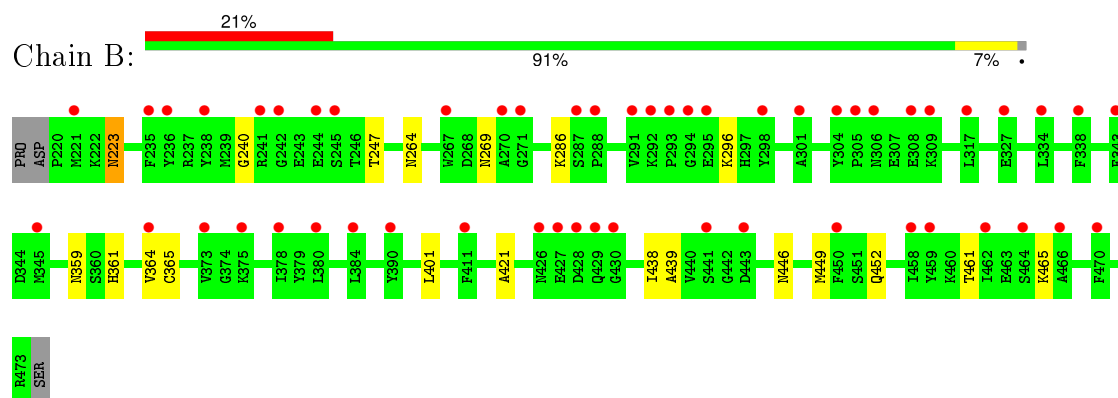
3 Residue-property plots

These plots are drawn for all protein, RNA and DNA chains in the entry. The first graphic for a chain summarises the proportions of errors displayed in the second graphic. The second graphic shows the sequence view annotated by issues in geometry and electron density. Residues are color-coded according to the number of geometric quality criteria for which they contain at least one outlier: green = 0, yellow = 1, orange = 2 and red = 3 or more. A red dot above a residue indicates a poor fit to the electron density ($\text{RSRZ} > 2$). Stretches of 2 or more consecutive residues without any outlier are shown as a green connector. Residues present in the sample, but not in the model, are shown in grey.

• Molecule 1: ADAM 17



• Molecule 1: ADAM 17



4 Data and refinement statistics

Property	Value	Source
Space group	P 21 21 21	Depositor
Cell constants a, b, c, α , β , γ	74.39Å 75.64Å 103.71Å 90.00° 90.00° 90.00°	Depositor
Resolution (Å)	20.00 – 1.70 19.65 – 1.70	Depositor EDS
% Data completeness (in resolution range)	97.8 (20.00-1.70) 97.8 (19.65-1.70)	Depositor EDS
R_{merge}	(Not available)	Depositor
R_{sym}	(Not available)	Depositor
$\langle I/\sigma(I) \rangle$ ¹	2.50 (at 1.70Å)	Xtriage
Refinement program	REFMAC 5.2.0005	Depositor
R, R_{free}	0.204 , 0.230 0.213 , 0.196	Depositor DCC
R_{free} test set	1258 reflections (2.02%)	DCC
Wilson B-factor (Å ²)	28.5	Xtriage
Anisotropy	0.202	Xtriage
Bulk solvent k_{sol} (e/Å ³), B_{sol} (Å ²)	0.38 , 57.0	EDS
Estimated twinning fraction	0.022 for k,h,-l	Xtriage
L-test for twinning ²	$\langle L \rangle = 0.48$, $\langle L^2 \rangle = 0.31$	Xtriage
Outliers	0 of 63554 reflections	Xtriage
F_o, F_c correlation	0.95	EDS
Total number of atoms	4323	wwPDB-VP
Average B, all atoms (Å ²)	37.0	wwPDB-VP

Xtriage's analysis on translational NCS is as follows: *The largest off-origin peak in the Patterson function is 4.05% of the height of the origin peak. No significant pseudotranslation is detected.*

¹Intensities estimated from amplitudes.

²Theoretical values of $\langle |L| \rangle$, $\langle L^2 \rangle$ for acentric reflections are 0.5, 0.375 respectively for untwinned datasets, and 0.333, 0.2 for perfectly twinned datasets.

5 Model quality [i](#)

5.1 Standard geometry [i](#)

Bond lengths and bond angles in the following residue types are not validated in this section: ZN, IPA, IMD, CA, INN, CIT

The Z score for a bond length (or angle) is the number of standard deviations the observed value is removed from the expected value. A bond length (or angle) with $|Z| > 5$ is considered an outlier worth inspection. RMSZ is the root-mean-square of all Z scores of the bond lengths (or angles).

Mol	Chain	Bond lengths		Bond angles	
		RMSZ	$\# Z > 5$	RMSZ	$\# Z > 5$
1	A	0.65	0/2019	0.68	0/2729
1	B	0.58	0/1971	0.62	0/2674
All	All	0.62	0/3990	0.65	0/5403

Chiral center outliers are detected by calculating the chiral volume of a chiral center and verifying if the center is modelled as a planar moiety or with the opposite hand. A planarity outlier is detected by checking planarity of atoms in a peptide group, atoms in a mainchain group or atoms of a sidechain that are expected to be planar.

Mol	Chain	#Chirality outliers	#Planarity outliers
1	A	0	1

There are no bond length outliers.

There are no bond angle outliers.

There are no chirality outliers.

All (1) planarity outliers are listed below:

Mol	Chain	Res	Type	Group
1	A	461	THR	Peptide

5.2 Too-close contacts [i](#)

In the following table, the Non-H and H(model) columns list the number of non-hydrogen atoms and hydrogen atoms in the chain respectively. The H(added) column lists the number of hydrogen atoms added and optimized by MolProbity. The Clashes column lists the number of clashes within the asymmetric unit, whereas Symm-Clashes lists symmetry related clashes.

Mol	Chain	Non-H	H(model)	H(added)	Clashes	Symm-Clashes
1	A	1969	0	1845	8	0
1	B	1926	0	1770	18	0
2	A	1	0	0	0	0
2	B	1	0	0	0	0
3	A	1	0	0	0	0
4	A	29	0	36	0	0
4	B	29	0	36	4	0
5	B	5	0	5	1	0
6	B	13	0	5	0	0
7	A	4	0	8	0	0
7	B	12	0	24	2	0
8	A	189	0	0	3	0
8	B	144	0	0	3	0
All	All	4323	0	3729	27	0

The all-atom clashscore is defined as the number of clashes found per 1000 atoms (including hydrogen atoms). The all-atom clashscore for this structure is 4.

All (27) close contacts within the same asymmetric unit are listed below, sorted by their clash magnitude.

Atom-1	Atom-2	Interatomic distance (Å)	Clash overlap (Å)
1:B:269:ASN:HD21	1:B:452:GLN:HE22	1.32	0.74
1:B:269:ASN:HD21	1:B:452:GLN:NE2	1.91	0.66
1:A:319:GLU:HG3	8:A:636:HOH:O	1.95	0.65
1:B:438:ILE:CG2	4:B:2:INN:H151	2.35	0.56
1:B:446:ASN:HA	1:B:449:MET:HE3	1.87	0.56
1:B:438:ILE:HG21	4:B:2:INN:H151	1.85	0.56
1:B:264:ASN:ND2	8:B:603:HOH:O	2.40	0.54
1:B:421:ALA:HA	7:B:501:IPA:H31	1.89	0.53
1:A:290:GLU:OE2	8:A:614:HOH:O	2.18	0.53
1:A:466:ALA:HA	1:A:470:PHE:CG	2.44	0.53
1:B:439:ALA:HA	4:B:2:INN:H31	1.91	0.52
1:A:286:LYS:HE3	8:A:654:HOH:O	2.09	0.52
1:B:359:ASN:O	5:B:475:IMD:H2	2.13	0.48
4:B:2:INN:O3	4:B:2:INN:N4	2.46	0.47
1:A:401:LEU:HD13	1:A:440:VAL:HG23	1.96	0.47
1:B:446:ASN:HA	1:B:449:MET:CE	2.45	0.45
1:A:458:ILE:O	1:A:461:THR:N	2.50	0.45
1:B:223:ASN:C	1:B:223:ASN:HD22	2.20	0.45
1:B:452:GLN:NE2	8:B:570:HOH:O	2.50	0.44
1:B:361:HIS:HD2	8:B:575:HOH:O	2.02	0.42
1:B:364:VAL:HG23	1:B:465:LYS:HD3	2.02	0.42

Continued on next page...

Continued from previous page...

Atom-1	Atom-2	Interatomic distance (Å)	Clash overlap (Å)
1:A:275:TYR:CE1	1:A:462:ILE:HG21	2.54	0.42
1:B:401:LEU:HD23	1:B:401:LEU:HA	1.92	0.42
1:B:286:LYS:H	7:B:502:IPA:H11	1.85	0.41
1:A:401:LEU:HD13	1:A:440:VAL:O	2.20	0.41
1:B:461:THR:HG23	1:B:465:LYS:HD2	2.01	0.41
1:B:240:GLY:HA3	1:B:247:THR:OG1	2.20	0.41

There are no symmetry-related clashes.

5.3 Torsion angles [i](#)

5.3.1 Protein backbone [i](#)

In the following table, the Percentiles column shows the percent Ramachandran outliers of the chain as a percentile score with respect to all X-ray entries followed by that with respect to entries of similar resolution.

The Analysed column shows the number of residues for which the backbone conformation was analysed, and the total number of residues.

Mol	Chain	Analysed	Favoured	Allowed	Outliers	Percentiles	
1	A	250/257 (97%)	242 (97%)	6 (2%)	2 (1%)	24	7
1	B	252/257 (98%)	247 (98%)	4 (2%)	1 (0%)	39	20
All	All	502/514 (98%)	489 (97%)	10 (2%)	3 (1%)	30	12

All (3) Ramachandran outliers are listed below:

Mol	Chain	Res	Type
1	A	365	CYS
1	B	365	CYS
1	A	270	ALA

5.3.2 Protein sidechains [i](#)

In the following table, the Percentiles column shows the percent sidechain outliers of the chain as a percentile score with respect to all X-ray entries followed by that with respect to entries of similar resolution.

The Analysed column shows the number of residues for which the sidechain conformation was analysed, and the total number of residues.

Mol	Chain	Analysed	Rotameric	Outliers	Percentiles	
1	A	207/219 (94%)	203 (98%)	4 (2%)	65	46
1	B	195/219 (89%)	193 (99%)	2 (1%)	82	72
All	All	402/438 (92%)	396 (98%)	6 (2%)	72	56

All (6) residues with a non-rotameric sidechain are listed below:

Mol	Chain	Res	Type
1	A	223	ASN
1	A	392	LYS
1	A	456	GLN
1	A	462	ILE
1	B	223	ASN
1	B	296	LYS

Some sidechains can be flipped to improve hydrogen bonding and reduce clashes. All (9) such sidechains are listed below:

Mol	Chain	Res	Type
1	A	223	ASN
1	A	281	GLN
1	A	456	GLN
1	A	471	GLN
1	B	223	ASN
1	B	278	GLN
1	B	361	HIS
1	B	452	GLN
1	B	471	GLN

5.3.3 RNA ⓘ

There are no RNA molecules in this entry.

5.4 Non-standard residues in protein, DNA, RNA chains ⓘ

There are no non-standard protein/DNA/RNA residues in this entry.

5.5 Carbohydrates ⓘ

There are no carbohydrates in this entry.

5.6 Ligand geometry

Of 11 ligands modelled in this entry, 3 are monoatomic - leaving 8 for Mogul analysis.

In the following table, the Counts columns list the number of bonds (or angles) for which Mogul statistics could be retrieved, the number of bonds (or angles) that are observed in the model and the number of bonds (or angles) that are defined in the chemical component dictionary. The Link column lists molecule types, if any, to which the group is linked. The Z score for a bond length (or angle) is the number of standard deviations the observed value is removed from the expected value. A bond length (or angle) with $|Z| > 2$ is considered an outlier worth inspection. RMSZ is the root-mean-square of all Z scores of the bond lengths (or angles).

Mol	Type	Chain	Res	Link	Bond lengths			Bond angles		
					Counts	RMSZ	# $ Z > 2$	Counts	RMSZ	# $ Z > 2$
4	INN	A	3	2	28,28,28	0.49	0	33,38,38	1.17	2 (6%)
7	IPA	A	476	-	3,3,3	0.73	0	3,3,3	0.43	0
4	INN	B	2	2	28,28,28	0.52	0	33,38,38	1.38	7 (21%)
5	IMD	B	475	-	3,5,5	0.51	0	4,5,5	0.53	0
6	CIT	B	500	-	3,12,12	1.13	0	3,17,17	2.26	1 (33%)
7	IPA	B	501	-	3,3,3	0.58	0	3,3,3	0.35	0
7	IPA	B	502	-	3,3,3	0.68	0	3,3,3	0.15	0
7	IPA	B	503	-	3,3,3	0.63	0	3,3,3	0.23	0

In the following table, the Chirals column lists the number of chiral outliers, the number of chiral centers analysed, the number of these observed in the model and the number defined in the chemical component dictionary. Similar counts are reported in the Torsion and Rings columns. '-' means no outliers of that kind were identified.

Mol	Type	Chain	Res	Link	Chirals	Torsions	Rings
4	INN	A	3	2	-	0/40/40/40	0/0/0/0
7	IPA	A	476	-	-	0/0/0/0	0/0/0/0
4	INN	B	2	2	-	0/40/40/40	0/0/0/0
5	IMD	B	475	-	-	0/0/0/0	0/1/1/1
6	CIT	B	500	-	-	0/6/16/16	0/0/0/0
7	IPA	B	501	-	-	0/0/0/0	0/0/0/0
7	IPA	B	502	-	-	0/0/0/0	0/0/0/0
7	IPA	B	503	-	-	0/0/0/0	0/0/0/0

There are no bond length outliers.

All (10) bond angle outliers are listed below:

Mol	Chain	Res	Type	Atoms	Z	Observed(°)	Ideal(°)
6	B	500	CIT	C3-C4-C5	-3.45	109.44	114.96
4	B	2	INN	C6-C5-N1	-3.40	108.57	112.34

Continued on next page...

Continued from previous page...

Mol	Chain	Res	Type	Atoms	Z	Observed(°)	Ideal(°)
4	B	2	INN	CA-C0-C	-2.58	107.14	112.27
4	A	3	INN	O2-C10-C5	-2.28	117.78	121.16
4	B	2	INN	O-C-C0	-2.24	118.03	121.30
4	B	2	INN	O1-C4-CA	-2.18	119.29	122.12
4	B	2	INN	O2-C10-N2	-2.08	118.85	122.93
4	B	2	INN	C14-N3-C13	2.03	126.55	122.53
4	B	2	INN	C15-C14-N3	2.53	121.47	111.54
4	A	3	INN	C12-C11-N2	2.62	115.25	110.31

There are no chirality outliers.

There are no torsion outliers.

There are no ring outliers.

4 monomers are involved in 7 short contacts:

Mol	Chain	Res	Type	Clashes	Symm-Clashes
4	B	2	INN	4	0
5	B	475	IMD	1	0
7	B	501	IPA	1	0
7	B	502	IPA	1	0

5.7 Other polymers [i](#)

There are no such residues in this entry.

5.8 Polymer linkage issues [i](#)

There are no chain breaks in this entry.

6 Fit of model and data ⓘ

6.1 Protein, DNA and RNA chains ⓘ

In the following table, the column labelled ‘#RSRZ> 2’ contains the number (and percentage) of RSRZ outliers, followed by percent RSRZ outliers for the chain as percentile scores relative to all X-ray entries and entries of similar resolution. The OWAB column contains the minimum, median, 95th percentile and maximum values of the occupancy-weighted average B-factor per residue. The column labelled ‘Q< 0.9’ lists the number of (and percentage) of residues with an average occupancy less than 0.9.

Mol	Chain	Analysed	<RSRZ>	#RSRZ>2		OWAB(Å ²)	Q<0.9
1	A	253/257 (98%)	0.86	32 (12%)	5 6	24, 32, 49, 55	0
1	B	254/257 (98%)	1.08	53 (20%)	1 1	26, 38, 54, 62	0
All	All	507/514 (98%)	0.97	85 (16%)	2 2	24, 35, 52, 62	0

All (85) RSRZ outliers are listed below:

Mol	Chain	Res	Type	RSRZ
1	B	294	GLY	6.1
1	B	428	ASP	6.1
1	A	428	ASP	5.9
1	A	221	MET	5.5
1	B	221	MET	5.2
1	A	440	VAL	5.2
1	B	429	GLN	5.1
1	A	361	HIS	5.1
1	B	270	ALA	5.0
1	A	461	THR	5.0
1	A	474	SER	4.7
1	B	308	GLU	4.5
1	B	293	PRO	4.3
1	B	238	TYR	4.2
1	A	464	SER	4.2
1	A	355	SER	4.1
1	A	220	PRO	4.0
1	A	270	ALA	3.9
1	A	293	PRO	3.8
1	B	466	ALA	3.8
1	A	271	GLY	3.8
1	B	458	ILE	3.8
1	B	411	PHE	3.7
1	B	459	TYR	3.6

Continued on next page...

Continued from previous page...

Mol	Chain	Res	Type	RSRZ
1	B	287	SER	3.5
1	B	426	ASN	3.5
1	B	441	SER	3.5
1	B	364	VAL	3.5
1	B	291	VAL	3.4
1	B	306	ASN	3.4
1	A	356	PRO	3.4
1	B	345	MET	3.3
1	B	373	VAL	3.2
1	A	462	ILE	3.2
1	A	218	PRO	3.2
1	B	309	LYS	3.2
1	A	317	LEU	3.1
1	A	292	LYS	3.1
1	A	441	SER	3.0
1	B	430	GLY	3.0
1	A	420	LEU	3.0
1	B	245	SER	2.9
1	B	305	PRO	2.9
1	B	295	GLU	2.9
1	B	470	PHE	2.8
1	A	411	PHE	2.8
1	B	304	TYR	2.8
1	B	317	LEU	2.7
1	B	235	PHE	2.7
1	A	348	LEU	2.7
1	B	301	ALA	2.6
1	B	464	SER	2.6
1	B	380	LEU	2.6
1	A	337	LEU	2.6
1	B	292	LYS	2.6
1	B	271	GLY	2.6
1	B	390	TYR	2.6
1	B	244	GLU	2.5
1	B	462	ILE	2.5
1	B	450	PHE	2.5
1	B	288	PRO	2.4
1	B	443	ASP	2.4
1	B	236	TYR	2.4
1	A	384	LEU	2.3
1	A	458	ILE	2.3
1	A	429	GLN	2.3

Continued on next page...

Continued from previous page...

Mol	Chain	Res	Type	RSRZ
1	A	413	ALA	2.3
1	B	427	GLU	2.3
1	B	241	ARG	2.3
1	A	417	PRO	2.3
1	B	267	TRP	2.3
1	B	334	LEU	2.2
1	B	384	LEU	2.2
1	B	343	PHE	2.2
1	B	375	LYS	2.2
1	A	364	VAL	2.2
1	A	426	ASN	2.1
1	B	298	TYR	2.1
1	A	318	LEU	2.1
1	B	378	ILE	2.1
1	A	219	ASP	2.1
1	B	338	PHE	2.1
1	B	242	GLY	2.0
1	A	402	VAL	2.0
1	B	327	GLU	2.0

6.2 Non-standard residues in protein, DNA, RNA chains [i](#)

There are no non-standard protein/DNA/RNA residues in this entry.

6.3 Carbohydrates [i](#)

There are no carbohydrates in this entry.

6.4 Ligands [i](#)

In the following table, the Atoms column lists the number of modelled atoms in the group and the number defined in the chemical component dictionary. LLDF column lists the quality of electron density of the group with respect to its neighbouring residues in protein, DNA or RNA chains. The B-factors column lists the minimum, median, 95th percentile and maximum values of B factors of atoms in the group. The column labelled 'Q< 0.9' lists the number of atoms with occupancy less than 0.9.

Mol	Type	Chain	Res	Atoms	RSCC	RSR	LLDF	B-factors(Å ²)	Q<0.9
7	IPA	B	501	4/4	0.91	0.23	2.41	55,56,56,57	0
6	CIT	B	500	13/13	0.77	0.21	1.69	38,42,45,46	0

Continued on next page...

Continued from previous page...

Mol	Type	Chain	Res	Atoms	RSCC	RSR	LLDF	B-factors(\AA^2)	Q<0.9
4	INN	B	2	29/29	0.84	0.15	0.98	27,32,55,58	0
7	IPA	B	502	4/4	0.78	0.22	0.47	58,60,61,61	0
4	INN	A	3	29/29	0.89	0.13	-0.11	23,27,44,49	0
7	IPA	A	476	4/4	0.94	0.11	-0.38	27,36,37,37	0
3	CA	A	475	1/1	1.00	0.10	-0.39	35,35,35,35	0
7	IPA	B	503	4/4	0.95	0.13	-	57,58,58,58	0
2	ZN	A	1	1/1	1.00	0.06	-	29,29,29,29	0
2	ZN	B	4	1/1	1.00	0.04	-	31,31,31,31	0
5	IMD	B	475	5/5	0.88	0.22	-	47,48,48,48	0

6.5 Other polymers [i](#)

There are no such residues in this entry.