



Full wwPDB X-ray Structure Validation Report ⓘ

Feb 19, 2016 – 10:33 PM GMT

PDB ID : 5DEU
Title : Crystal structure of TET2-5hmC complex
Authors : Hu, L.; Cheng, J.; Rao, Q.; Li, Z.; Li, J.; Xu, Y.
Deposited on : 2015-08-26
Resolution : 1.80 Å(reported)

This is a Full wwPDB X-ray Structure Validation Report for a publicly released PDB entry.
We welcome your comments at validation@mail.wwpdb.org
A user guide is available at
<http://wwpdb.org/validation/2016/XrayValidationReportHelp>
with specific help available everywhere you see the ⓘ symbol.

The following versions of software and data (see [references ⓘ](#)) were used in the production of this report:

MolProbity : 4.02b-467
Mogul : 1.7.1 (RC1), CSD as537be (2016)
Xtriage (Phenix) : 1.9-1692
EDS : rb-20026982
Percentile statistics : 20151230.v01 (using entries in the PDB archive December 30th 2015)
Refmac : 5.8.0135
CCP4 : 6.5.0
Ideal geometry (proteins) : Engh & Huber (2001)
Ideal geometry (DNA, RNA) : Parkinson et al. (1996)
Validation Pipeline (wwPDB-VP) : rb-20026982

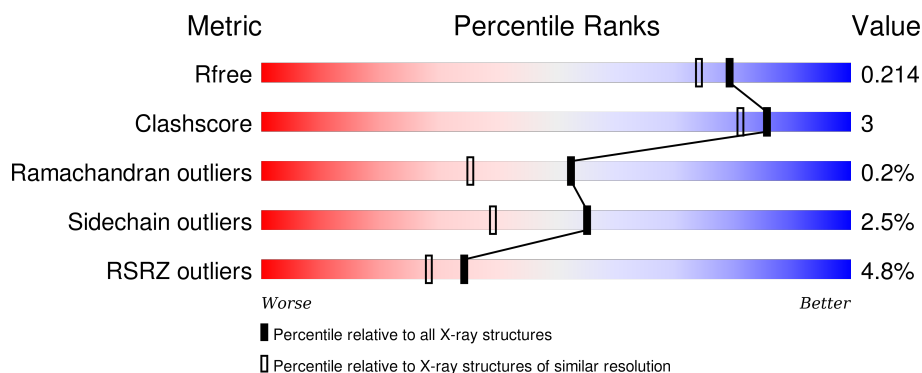
1 Overall quality at a glance

The following experimental techniques were used to determine the structure:

X-RAY DIFFRACTION

The reported resolution of this entry is 1.80 Å.

Percentile scores (ranging between 0-100) for global validation metrics of the entry are shown in the following graphic. The table shows the number of entries on which the scores are based.



Metric	Whole archive (#Entries)	Similar resolution (#Entries, resolution range(Å))
R_{free}	91344	4533 (1.80-1.80)
Clashscore	102246	5383 (1.80-1.80)
Ramachandran outliers	100387	5320 (1.80-1.80)
Sidechain outliers	100360	5319 (1.80-1.80)
RSRZ outliers	91569	4547 (1.80-1.80)

The table below summarises the geometric issues observed across the polymeric chains and their fit to the electron density. The red, orange, yellow and green segments on the lower bar indicate the fraction of residues that contain outliers for ≥ 3 , 2, 1 and 0 types of geometric quality criteria. A grey segment represents the fraction of residues that are not modelled. The numeric value for each fraction is indicated below the corresponding segment, with a dot representing fractions $\leq 5\%$. The upper red bar (where present) indicates the fraction of residues that have poor fit to the electron density. The numeric value is given above the bar.

Mol	Chain	Length	Quality of chain
1	A	462	<div> <div>4%</div> <div>82%</div> <div>6% • 11%</div> </div>
2	B	12	<div> <div>8%</div> <div>92%</div> <div>8%</div> </div>
3	C	11	<div> <div>45%</div> <div>55%</div> </div>

2 Entry composition

There are 9 unique types of molecules in this entry. The entry contains 4067 atoms, of which 0 are hydrogens and 0 are deuteriums.

In the tables below, the ZeroOcc column contains the number of atoms modelled with zero occupancy, the AltConf column contains the number of residues with at least one atom in alternate conformation and the Trace column contains the number of residues modelled with at most 2 atoms.

- Molecule 1 is a protein called Methylcytosine dioxygenase TET2, chimeric construct.

Mol	Chain	Residues	Atoms					ZeroOcc	AltConf	Trace
1	A	413	Total	C	N	O	S	0	1	0
			3259	2036	584	615	24			

There are 18 discrepancies between the modelled and reference sequences:

Chain	Residue	Modelled	Actual	Comment	Reference
A	1127	GLY	-	expression tag	UNP Q6N021
A	1128	SER	-	expression tag	UNP Q6N021
A	1829	GLY	-	linker	UNP Q6N021
A	1830	GLY	-	linker	UNP Q6N021
A	1831	GLY	-	linker	UNP Q6N021
A	1832	GLY	-	linker	UNP Q6N021
A	1833	SER	-	linker	UNP Q6N021
A	1834	GLY	-	linker	UNP Q6N021
A	1835	GLY	-	linker	UNP Q6N021
A	1836	GLY	-	linker	UNP Q6N021
A	1837	GLY	-	linker	UNP Q6N021
A	1838	SER	-	linker	UNP Q6N021
A	1839	GLY	-	linker	UNP Q6N021
A	1840	GLY	-	linker	UNP Q6N021
A	1841	GLY	-	linker	UNP Q6N021
A	1842	GLY	-	linker	UNP Q6N021
A	1843	SER	-	linker	UNP Q6N021
A	1936	GLY	-	expression tag	UNP Q6N021

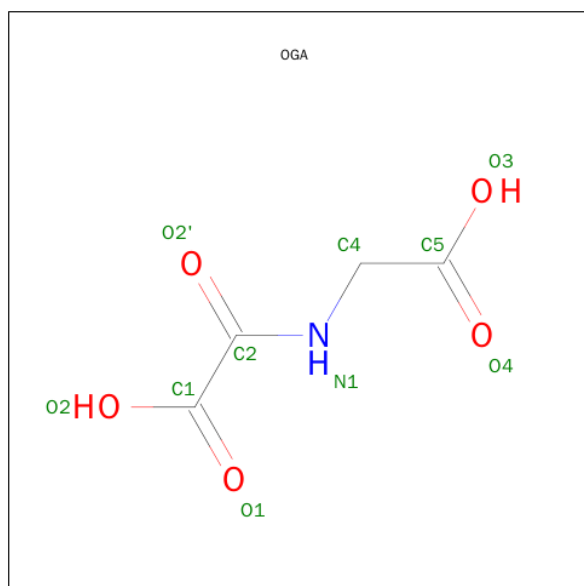
- Molecule 2 is a DNA chain called DNA (5'-D(*AP*CP*CP*AP*CP*(5HC)P*GP*GP*TP*GP*GP*T)-3').

Mol	Chain	Residues	Atoms					ZeroOcc	AltConf	Trace
2	B	12	Total	C	N	O	P	0	0	0
			245	117	46	71	11			

- Molecule 3 is a DNA chain called DNA (5'-D(P*CP*CP*AP*CP*(5HC)P*GP*GP*TP*GP*GP*T)-3').

Mol	Chain	Residues	Atoms					ZeroOcc	AltConf	Trace
3	C	11	Total	C	N	O	P	0	0	0
			227	107	41	68	11			

- Molecule 4 is N-OXALYLGLYCINE (three-letter code: OGA) (formula: C₄H₅NO₅).



Mol	Chain	Residues	Atoms				ZeroOcc	AltConf
4	A	1	Total	C	N	O	0	0
			10	4	1	5		

- Molecule 5 is 2-(N-MORPHOLINO)-ETHANESULFONIC ACID (three-letter code: MES) (formula: C₆H₁₃NO₄S).



Mol	Chain	Residues	Atoms					ZeroOcc	AltConf
5	A	1	Total	C	N	O	S	0	0
			12	6	1	4	1		

- Molecule 6 is FE (III) ION (three-letter code: FE) (formula: Fe).

Mol	Chain	Residues	Atoms		ZeroOcc	AltConf
6	A	1	Total	Fe	0	0
			1	1		

- Molecule 7 is ZINC ION (three-letter code: ZN) (formula: Zn).

Mol	Chain	Residues	Atoms		ZeroOcc	AltConf
7	A	3	Total	Zn	0	0
			3	3		

- Molecule 8 is CHLORIDE ION (three-letter code: CL) (formula: Cl).

Mol	Chain	Residues	Atoms		ZeroOcc	AltConf
8	A	1	Total	Cl	0	0
			1	1		

- Molecule 9 is water.

Mol	Chain	Residues	Atoms		ZeroOcc	AltConf
9	A	280	Total	O	0	0
			280	280		

Continued on next page...

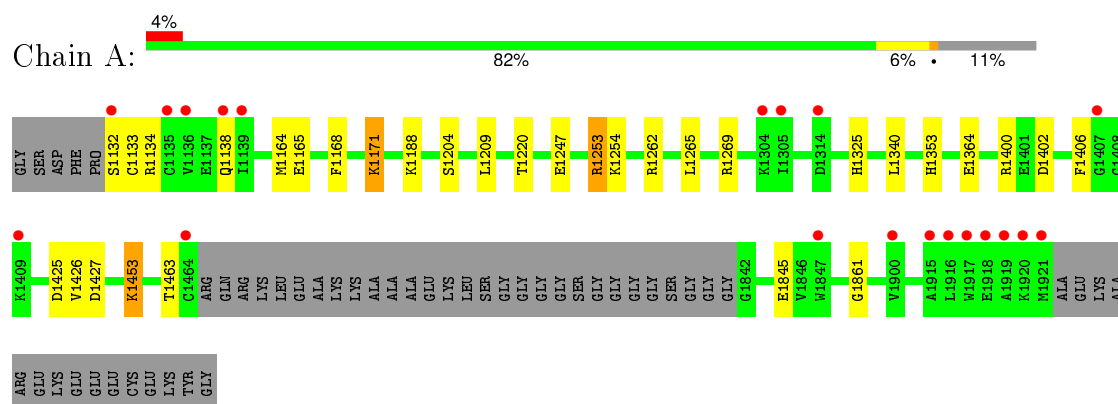
Continued from previous page...

Mol	Chain	Residues	Atoms		ZeroOcc	AltConf
9	B	21	Total	O	0	0
			21	21		
9	C	8	Total	O	0	0
			8	8		

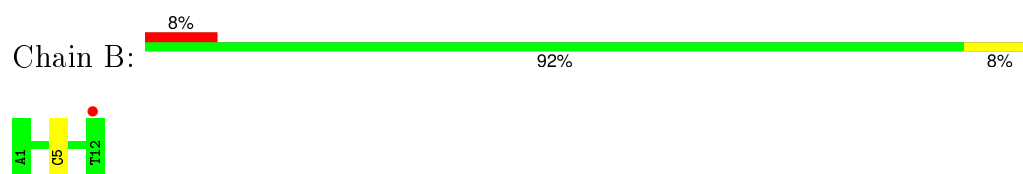
3 Residue-property plots [i](#)

These plots are drawn for all protein, RNA and DNA chains in the entry. The first graphic for a chain summarises the proportions of errors displayed in the second graphic. The second graphic shows the sequence view annotated by issues in geometry and electron density. Residues are color-coded according to the number of geometric quality criteria for which they contain at least one outlier: green = 0, yellow = 1, orange = 2 and red = 3 or more. A red dot above a residue indicates a poor fit to the electron density ($RSRZ > 2$). Stretches of 2 or more consecutive residues without any outlier are shown as a green connector. Residues present in the sample, but not in the model, are shown in grey.

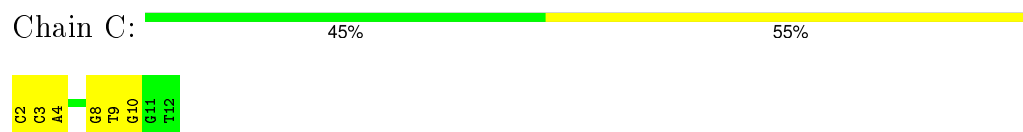
- Molecule 1: Methylcytosine dioxygenase TET2, chimeric construct



- Molecule 2: DNA (5'-D(*AP*CP*CP*AP*CP*(5HC)P*GP*GP*TP*GP*GP*T)-3')



- Molecule 3: DNA (5'-D(P*CP*CP*AP*CP*(5HC)P*GP*GP*TP*GP*GP*T)-3')



4 Data and refinement statistics

Property	Value	Source
Space group	C 2 2 21	Depositor
Cell constants a, b, c, α , β , γ	48.26 Å 87.52 Å 260.86 Å 90.00° 90.00° 90.00°	Depositor
Resolution (Å)	42.26 – 1.80 42.26 – 1.80	Depositor EDS
% Data completeness (in resolution range)	98.0 (42.26-1.80) 93.6 (42.26-1.80)	Depositor EDS
R_{merge}	0.09	Depositor
R_{sym}	(Not available)	Depositor
$\langle I/\sigma(I) \rangle$ ¹	2.10 (at 1.81 Å)	Xtriage
Refinement program	PHENIX	Depositor
R, R_{free}	0.177 , 0.212 0.184 , 0.214	Depositor DCC
R_{free} test set	1995 reflections (4.29%)	DCC
Wilson B-factor (Å ²)	30.2	Xtriage
Anisotropy	0.400	Xtriage
Bulk solvent k_{sol} (e/Å ³), B_{sol} (Å ²)	0.33 , 44.3	EDS
Estimated twinning fraction	0.025 for 1/2*h-1/2*k,-3/2*h-1/2*k,-l 0.038 for 1/2*h+1/2*k,3/2*h-1/2*k,-l	Xtriage
L-test for twinning ²	$\langle L \rangle = 0.48$, $\langle L^2 \rangle = 0.31$	Xtriage
Outliers	0 of 50690 reflections	Xtriage
F_o, F_c correlation	0.96	EDS
Total number of atoms	4067	wwPDB-VP
Average B, all atoms (Å ²)	45.0	wwPDB-VP

Xtriage's analysis on translational NCS is as follows: *The largest off-origin peak in the Patterson function is 4.18% of the height of the origin peak. No significant pseudotranslation is detected.*

¹ Intensities estimated from amplitudes.

² Theoretical values of $\langle |L| \rangle$, $\langle L^2 \rangle$ for acentric reflections are 0.5, 0.375 respectively for untwinned datasets, and 0.333, 0.2 for perfectly twinned datasets.

5 Model quality [i](#)

5.1 Standard geometry [i](#)

Bond lengths and bond angles in the following residue types are not validated in this section: ZN, 5HC, CL, FE, MES, OGA

The Z score for a bond length (or angle) is the number of standard deviations the observed value is removed from the expected value. A bond length (or angle) with $|Z| > 5$ is considered an outlier worth inspection. RMSZ is the root-mean-square of all Z scores of the bond lengths (or angles).

Mol	Chain	Bond lengths		Bond angles	
		RMSZ	$\# Z > 5$	RMSZ	$\# Z > 5$
1	A	0.35	0/3324	0.52	0/4481
2	B	0.63	0/250	1.24	0/382
3	C	0.58	0/229	1.35	1/349 (0.3%)
All	All	0.39	0/3803	0.69	1/5212 (0.0%)

There are no bond length outliers.

All (1) bond angle outliers are listed below:

Mol	Chain	Res	Type	Atoms	Z	Observed(°)	Ideal(°)
3	C	8	DG	O4'-C1'-N9	-7.76	102.56	108.00

There are no chirality outliers.

There are no planarity outliers.

5.2 Too-close contacts [i](#)

In the following table, the Non-H and H(model) columns list the number of non-hydrogen atoms and hydrogen atoms in the chain respectively. The H(added) column lists the number of hydrogen atoms added and optimized by MolProbity. The Clashes column lists the number of clashes within the asymmetric unit, whereas Symm-Clashes lists symmetry related clashes.

Mol	Chain	Non-H	H(model)	H(added)	Clashes	Symm-Clashes
1	A	3259	0	3224	16	0
2	B	245	0	137	2	0
3	C	227	0	126	4	0
4	A	10	0	3	0	0
5	A	12	0	12	0	0
6	A	1	0	0	0	0
7	A	3	0	0	0	0

Continued on next page...

Continued from previous page...

Mol	Chain	Non-H	H(model)	H(added)	Clashes	Symm-Clashes
8	A	1	0	0	0	0
9	A	280	0	0	1	0
9	B	21	0	0	0	0
9	C	8	0	0	0	0
All	All	4067	0	3502	20	0

The all-atom clashscore is defined as the number of clashes found per 1000 atoms (including hydrogen atoms). The all-atom clashscore for this structure is 3.

All (20) close contacts within the same asymmetric unit are listed below, sorted by their clash magnitude.

Atom-1	Atom-2	Interatomic distance (Å)	Clash overlap (Å)
1:A:1262:ARG:HB2	2:B:5:DC:H5'	1.79	0.64
1:A:1253:ARG:HD2	1:A:1254:LYS:HZ2	1.70	0.56
1:A:1463:THR:HG23	2:B:5:DC:OP2	2.07	0.54
1:A:1262:ARG:NE	9:A:2109:HOH:O	2.37	0.53
3:C:2:DC:H2'	3:C:3:DC:C6	2.43	0.53
1:A:1247:GLU:OE1	1:A:1325:HIS:NE2	2.44	0.52
1:A:1353:HIS:HE1	1:A:1364:GLU:OE2	1.94	0.50
1:A:1265:LEU:HB2	1:A:1269:ARG:NH1	2.27	0.49
1:A:1204:SER:HA	1:A:1406:PHE:CZ	2.48	0.48
3:C:9:DT:H2''	3:C:10:DG:N7	2.28	0.48
3:C:3:DC:H2'	3:C:4:DA:C8	2.49	0.47
1:A:1400:ARG:HD2	1:A:1402:ASP:OD1	2.18	0.44
1:A:1453:LYS:HG3	1:A:1845:GLU:OE2	2.18	0.44
1:A:1168:PHE:HD1	1:A:1340:LEU:HD21	1.84	0.43
3:C:2:DC:H2'	3:C:3:DC:H6	1.84	0.42
1:A:1253:ARG:HG3	1:A:1254:LYS:N	2.35	0.42
1:A:1132:SER:HA	1:A:1133:CYS:HA	1.81	0.41
1:A:1164:MET:HE2	1:A:1209:LEU:HD21	2.02	0.41
1:A:1425:ASP:OD1	1:A:1425:ASP:N	2.49	0.41
1:A:1165:GLU:HG2	1:A:1171:LYS:HA	2.03	0.40

There are no symmetry-related clashes.

5.3 Torsion angles [i](#)

5.3.1 Protein backbone [i](#)

In the following table, the Percentiles column shows the percent Ramachandran outliers of the chain as a percentile score with respect to all X-ray entries followed by that with respect to entries of similar resolution.

The Analysed column shows the number of residues for which the backbone conformation was analysed, and the total number of residues.

Mol	Chain	Analysed	Favoured	Allowed	Outliers	Percentiles	
1	A	410/462 (89%)	403 (98%)	6 (2%)	1 (0%)	52	35

All (1) Ramachandran outliers are listed below:

Mol	Chain	Res	Type
1	A	1861	GLY

5.3.2 Protein sidechains [i](#)

In the following table, the Percentiles column shows the percent sidechain outliers of the chain as a percentile score with respect to all X-ray entries followed by that with respect to entries of similar resolution.

The Analysed column shows the number of residues for which the sidechain conformation was analysed, and the total number of residues.

Mol	Chain	Analysed	Rotameric	Outliers	Percentiles	
1	A	356/385 (92%)	347 (98%)	9 (2%)	55	39

All (9) residues with a non-rotameric sidechain are listed below:

Mol	Chain	Res	Type
1	A	1134	ARG
1	A	1138	GLN
1	A	1171	LYS
1	A	1188	LYS
1	A	1220	THR
1	A	1253	ARG
1	A	1426	VAL
1	A	1427	ASP
1	A	1453	LYS

Some sidechains can be flipped to improve hydrogen bonding and reduce clashes. All (2) such sidechains are listed below:

Mol	Chain	Res	Type
1	A	1346	ASN
1	A	1353	HIS

5.3.3 RNA ⓘ

There are no RNA molecules in this entry.

5.4 Non-standard residues in protein, DNA, RNA chains ⓘ

2 non-standard protein/DNA/RNA residues are modelled in this entry.

In the following table, the Counts columns list the number of bonds (or angles) for which Mogul statistics could be retrieved, the number of bonds (or angles) that are observed in the model and the number of bonds (or angles) that are defined in the chemical component dictionary. The Link column lists molecule types, if any, to which the group is linked. The Z score for a bond length (or angle) is the number of standard deviations the observed value is removed from the expected value. A bond length (or angle) with $|Z| > 2$ is considered an outlier worth inspection. RMSZ is the root-mean-square of all Z scores of the bond lengths (or angles).

Mol	Type	Chain	Res	Link	Bond lengths			Bond angles		
					Counts	RMSZ	# $ Z > 2$	Counts	RMSZ	# $ Z > 2$
2	5HC	B	6	2	14,22,23	4.23	8 (57%)	18,31,34	2.22	6 (33%)
3	5HC	C	6	3,2	14,22,23	4.54	9 (64%)	18,31,34	2.07	3 (16%)

In the following table, the Chirals column lists the number of chiral outliers, the number of chiral centers analysed, the number of these observed in the model and the number defined in the chemical component dictionary. Similar counts are reported in the Torsion and Rings columns. '-' means no outliers of that kind were identified.

Mol	Type	Chain	Res	Link	Chirals	Torsions	Rings
2	5HC	B	6	2	-	0/5/23/24	0/2/2/2
3	5HC	C	6	3,2	-	0/5/23/24	0/2/2/2

All (17) bond length outliers are listed below:

Mol	Chain	Res	Type	Atoms	Z	Observed(Å)	Ideal(Å)
3	C	6	5HC	C2'-C1'	-7.14	1.32	1.52
3	C	6	5HC	C2'-C3'	-6.90	1.34	1.52
2	B	6	5HC	C2'-C1'	-6.69	1.33	1.52
2	B	6	5HC	C2'-C3'	-6.39	1.35	1.52

Continued on next page...

Continued from previous page...

Mol	Chain	Res	Type	Atoms	Z	Observed(Å)	Ideal(Å)
2	B	6	5HC	C4-N3	-4.53	1.28	1.35
3	C	6	5HC	C4-N3	-3.99	1.29	1.35
3	C	6	5HC	C5'-C4'	-2.32	1.44	1.51
2	B	6	5HC	O3'-C3'	2.82	1.49	1.43
3	C	6	5HC	O3'-C3'	3.36	1.50	1.43
2	B	6	5HC	O4'-C4'	4.13	1.54	1.45
3	C	6	5HC	O4'-C4'	4.67	1.55	1.45
2	B	6	5HC	C4-N4	4.97	1.47	1.34
2	B	6	5HC	O4'-C1'	5.13	1.54	1.42
3	C	6	5HC	C4-N4	5.21	1.48	1.34
3	C	6	5HC	O4'-C1'	5.43	1.54	1.42
2	B	6	5HC	C5-C4	7.78	1.56	1.42
3	C	6	5HC	C5-C4	8.30	1.57	1.42

All (9) bond angle outliers are listed below:

Mol	Chain	Res	Type	Atoms	Z	Observed(°)	Ideal(°)
3	C	6	5HC	C4'-O4'-C1'	-2.94	101.89	109.42
2	B	6	5HC	C4'-O4'-C1'	-2.62	102.71	109.42
2	B	6	5HC	O4'-C1'-N1	-2.30	103.70	107.71
2	B	6	5HC	C2'-C1'-N1	2.38	120.01	114.14
2	B	6	5HC	C5M-C5-C6	2.62	121.61	119.03
3	C	6	5HC	N4-C4-N3	3.05	121.38	116.92
2	B	6	5HC	N4-C4-N3	3.27	121.72	116.92
2	B	6	5HC	C3'-C2'-C1'	6.28	117.64	102.40
3	C	6	5HC	C3'-C2'-C1'	6.53	118.25	102.40

There are no chirality outliers.

There are no torsion outliers.

There are no ring outliers.

No monomer is involved in short contacts.

5.5 Carbohydrates [i](#)

There are no carbohydrates in this entry.

5.6 Ligand geometry [i](#)

Of 7 ligands modelled in this entry, 5 are monoatomic - leaving 2 for Mogul analysis.

In the following table, the Counts columns list the number of bonds (or angles) for which Mogul statistics could be retrieved, the number of bonds (or angles) that are observed in the model and the number of bonds (or angles) that are defined in the chemical component dictionary. The Link column lists molecule types, if any, to which the group is linked. The Z score for a bond length (or angle) is the number of standard deviations the observed value is removed from the expected value. A bond length (or angle) with $|Z| > 2$ is considered an outlier worth inspection. RMSZ is the root-mean-square of all Z scores of the bond lengths (or angles).

Mol	Type	Chain	Res	Link	Bond lengths			Bond angles		
					Counts	RMSZ	# $ Z > 2$	Counts	RMSZ	# $ Z > 2$
4	OGA	A	2001	6	3,9,9	3.03	1 (33%)	2,11,11	1.96	1 (50%)
5	MES	A	2002	-	12,12,12	2.03	1 (8%)	15,16,16	3.00	5 (33%)

In the following table, the Chirals column lists the number of chiral outliers, the number of chiral centers analysed, the number of these observed in the model and the number defined in the chemical component dictionary. Similar counts are reported in the Torsion and Rings columns. '-' means no outliers of that kind were identified.

Mol	Type	Chain	Res	Link	Chirals	Torsions	Rings
4	OGA	A	2001	6	-	0/3/9/9	0/0/0/0
5	MES	A	2002	-	-	0/6/14/14	0/1/1/1

All (2) bond length outliers are listed below:

Mol	Chain	Res	Type	Atoms	Z	Observed(Å)	Ideal(Å)
5	A	2002	MES	C8-S	-6.57	1.67	1.77
4	A	2001	OGA	C2-N1	5.14	1.44	1.33

All (6) bond angle outliers are listed below:

Mol	Chain	Res	Type	Atoms	Z	Observed(°)	Ideal(°)
4	A	2001	OGA	C4-N1-C2	-2.12	116.28	121.79
5	A	2002	MES	C7-N4-C3	2.37	116.41	111.25
5	A	2002	MES	C7-N4-C5	2.94	117.64	111.25
5	A	2002	MES	O1S-S-C8	4.12	109.78	106.87
5	A	2002	MES	C5-N4-C3	4.86	119.76	108.87
5	A	2002	MES	O2S-S-C8	8.46	112.85	106.87

There are no chirality outliers.

There are no torsion outliers.

There are no ring outliers.

No monomer is involved in short contacts.

5.7 Other polymers [i](#)

There are no such residues in this entry.

5.8 Polymer linkage issues [i](#)

There are no chain breaks in this entry.

6 Fit of model and data

6.1 Protein, DNA and RNA chains

In the following table, the column labelled ‘#RSRZ> 2’ contains the number (and percentage) of RSRZ outliers, followed by percent RSRZ outliers for the chain as percentile scores relative to all X-ray entries and entries of similar resolution. The OWAB column contains the minimum, median, 95th percentile and maximum values of the occupancy-weighted average B-factor per residue. The column labelled ‘Q< 0.9’ lists the number of (and percentage) of residues with an average occupancy less than 0.9.

Mol	Chain	Analysed	<RSRZ>	#RSRZ>2	OWAB(Å ²)	Q<0.9
1	A	413/462 (89%)	0.16	20 (4%) 34 28	24, 38, 73, 107	0
2	B	11/12 (91%)	0.17	1 (9%) 11 9	43, 61, 85, 103	0
3	C	10/11 (90%)	0.12	0 100 100	48, 64, 86, 89	0
All	All	434/485 (89%)	0.16	21 (4%) 34 28	24, 39, 74, 107	0

All (21) RSRZ outliers are listed below:

Mol	Chain	Res	Type	RSRZ
1	A	1305	ILE	5.9
1	A	1921	MET	5.2
1	A	1920	LYS	4.6
1	A	1132	SER	4.4
1	A	1917	TRP	4.2
1	A	1407	GLY	4.0
1	A	1138	GLN	3.6
1	A	1916	LEU	3.5
1	A	1464	CYS	3.3
1	A	1135	CYS	3.0
1	A	1139	ILE	2.9
1	A	1915	ALA	2.9
2	B	12	DT	2.8
1	A	1136	VAL	2.8
1	A	1409	LYS	2.8
1	A	1919	ALA	2.7
1	A	1918	GLU	2.7
1	A	1847	TRP	2.7
1	A	1314	ASP	2.2
1	A	1304	LYS	2.1
1	A	1900	VAL	2.0

6.2 Non-standard residues in protein, DNA, RNA chains [i](#)

In the following table, the Atoms column lists the number of modelled atoms in the group and the number defined in the chemical component dictionary. LLDF column lists the quality of electron density of the group with respect to its neighbouring residues in protein, DNA or RNA chains. The B-factors column lists the minimum, median, 95th percentile and maximum values of B factors of atoms in the group. The column labelled 'Q< 0.9' lists the number of atoms with occupancy less than 0.9.

Mol	Type	Chain	Res	Atoms	RSCC	RSR	LLDF	B-factors(Å ²)	Q<0.9
3	5HC	C	6	21/22	0.91	0.14	-	42,53,75,88	0
2	5HC	B	6	21/22	0.98	0.12	-	27,30,35,40	0

6.3 Carbohydrates [i](#)

There are no carbohydrates in this entry.

6.4 Ligands [i](#)

In the following table, the Atoms column lists the number of modelled atoms in the group and the number defined in the chemical component dictionary. LLDF column lists the quality of electron density of the group with respect to its neighbouring residues in protein, DNA or RNA chains. The B-factors column lists the minimum, median, 95th percentile and maximum values of B factors of atoms in the group. The column labelled 'Q< 0.9' lists the number of atoms with occupancy less than 0.9.

Mol	Type	Chain	Res	Atoms	RSCC	RSR	LLDF	B-factors(Å ²)	Q<0.9
5	MES	A	2002	12/12	0.95	0.13	0.36	34,57,73,74	0
7	ZN	A	2006	1/1	0.98	0.08	-0.40	33,33,33,33	0
4	OGA	A	2001	10/10	0.93	0.10	-1.25	29,32,35,36	0
8	CL	A	2007	1/1	0.97	0.10	-1.53	30,30,30,30	0
7	ZN	A	2005	1/1	0.99	0.06	-2.61	35,35,35,35	0
7	ZN	A	2004	1/1	0.98	0.04	-2.77	46,46,46,46	0
6	FE	A	2003	1/1	0.99	0.09	-	27,27,27,27	0

6.5 Other polymers [i](#)

There are no such residues in this entry.