



Full wwPDB X-ray Structure Validation Report ⓘ

Feb 1, 2016 – 03:47 PM GMT

PDB ID : 4DFF
Title : The SAR development of dihydroimidazoisoquinoline derivatives as phosphodiesterase 10A inhibitors for the treatment of schizophrenia
Authors : Ho, G.D.; Seganish, W.M.; Bercovici, A.; Tulshian, D.; Greenlee, W.J.; Van Rijn, R.; Hruza, A.; Xiao, L.; Rindgen, D.; Mullins, D.; Guzzi, M.; Zhang, X.; Bleichardt, C.; Hodgson, R.
Deposited on : 2012-01-23
Resolution : 2.11 Å(reported)

This is a Full wwPDB X-ray Structure Validation Report for a publicly released PDB entry.
We welcome your comments at validation@mail.wwpdb.org
A user guide is available at
<http://wwpdb.org/validation/2016/XrayValidationReportHelp>
with specific help available everywhere you see the ⓘ symbol.

The following versions of software and data (see [references ⓘ](#)) were used in the production of this report:

MolProbity : 4.02b-467
Mogul : 1.7 (RC4), CSD as536be (2015)
Xtriage (Phenix) : 1.9-1692
EDS : rb-20026688
Percentile statistics : 20151230.v01 (using entries in the PDB archive December 30th 2015)
Refmac : 5.8.0135
CCP4 : 6.5.0
Ideal geometry (proteins) : Engh & Huber (2001)
Ideal geometry (DNA, RNA) : Parkinson et al. (1996)
Validation Pipeline (wwPDB-VP) : trunk26865

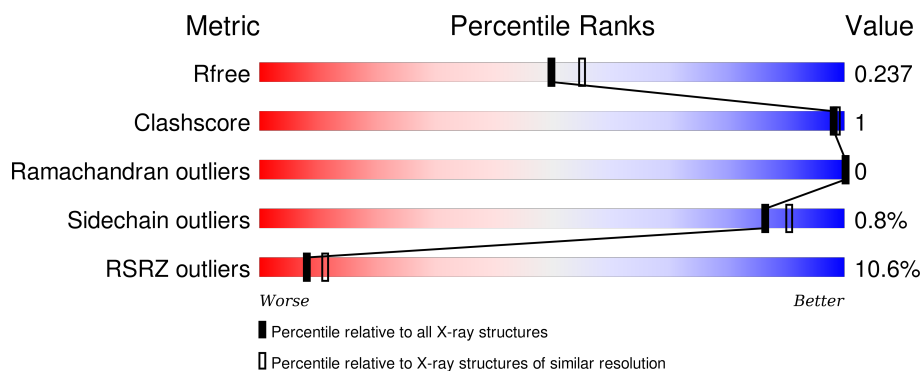
1 Overall quality at a glance

The following experimental techniques were used to determine the structure:

X-RAY DIFFRACTION

The reported resolution of this entry is 2.11 Å.

Percentile scores (ranging between 0-100) for global validation metrics of the entry are shown in the following graphic. The table shows the number of entries on which the scores are based.



Metric	Whole archive (#Entries)	Similar resolution (#Entries, resolution range(Å))
R_{free}	91344	4587 (2.14-2.10)
Clashscore	102246	5132 (2.14-2.10)
Ramachandran outliers	100387	5080 (2.14-2.10)
Sidechain outliers	100360	5081 (2.14-2.10)
RSRZ outliers	91569	4597 (2.14-2.10)

The table below summarises the geometric issues observed across the polymeric chains and their fit to the electron density. The red, orange, yellow and green segments on the lower bar indicate the fraction of residues that contain outliers for ≥ 3 , 2, 1 and 0 types of geometric quality criteria. A grey segment represents the fraction of residues that are not modelled. The numeric value for each fraction is indicated below the corresponding segment, with a dot representing fractions $\leq 5\%$. The upper red bar (where present) indicates the fraction of residues that have poor fit to the electron density. The numeric value is given above the bar.

Mol	Chain	Length	Quality of chain
1	A	352	<div> <div>10%</div> <div> <div></div> <div>86%</div> <div>•</div> <div>13%</div> </div> </div>
1	B	352	<div> <div>8%</div> <div> <div></div> <div>74%</div> <div>•</div> <div>21%</div> </div> </div>

2 Entry composition

There are 5 unique types of molecules in this entry. The entry contains 9491 atoms, of which 4676 are hydrogens and 0 are deuteriums.

In the tables below, the ZeroOcc column contains the number of atoms modelled with zero occupancy, the AltConf column contains the number of residues with at least one atom in alternate conformation and the Trace column contains the number of residues modelled with at most 2 atoms.

- Molecule 1 is a protein called cAMP and cAMP-inhibited cGMP 3',5'-cyclic phosphodiesterase 10A.

Mol	Chain	Residues	Atoms						ZeroOcc	AltConf	Trace
1	A	307	Total	C	H	N	O	S	0	0	0
			4942	1590	2454	425	451	22			
1	B	277	Total	C	H	N	O	S	0	0	0
			4455	1435	2207	384	409	20			

There are 8 discrepancies between the modelled and reference sequences:

Chain	Residue	Modelled	Actual	Comment	Reference
A	438	GLY	-	EXPRESSION TAG	UNP Q9Y233
A	446	SER	-	EXPRESSION TAG	UNP Q9Y233
A	447	HIS	-	EXPRESSION TAG	UNP Q9Y233
A	448	MET	-	EXPRESSION TAG	UNP Q9Y233
B	438	GLY	-	EXPRESSION TAG	UNP Q9Y233
B	446	SER	-	EXPRESSION TAG	UNP Q9Y233
B	447	HIS	-	EXPRESSION TAG	UNP Q9Y233
B	448	MET	-	EXPRESSION TAG	UNP Q9Y233

- Molecule 2 is MAGNESIUM ION (three-letter code: MG) (formula: Mg).

Mol	Chain	Residues	Atoms		ZeroOcc	AltConf
2	B	1	Total	Mg	0	0
			1	1		
2	A	1	Total	Mg	0	0
			1	1		

- Molecule 3 is ZINC ION (three-letter code: ZN) (formula: Zn).

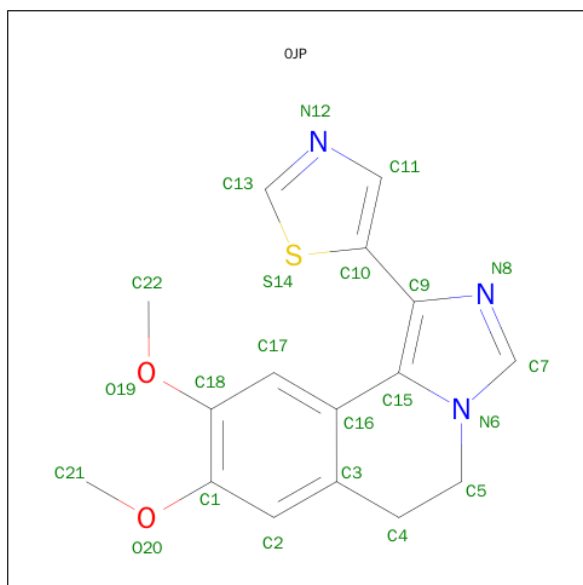
Mol	Chain	Residues	Atoms		ZeroOcc	AltConf
3	B	1	Total	Zn	0	0
			1	1		

Continued on next page...

Continued from previous page...

Mol	Chain	Residues	Atoms		ZeroOcc	AltConf
3	A	1	Total	Zn	0	0
			1	1		

- Molecule 4 is 8,9-DIMETHOXY-1-(1,3-THIAZOL-5-YL)-5,6-DIHYDROIMIDAZO[5,1-A]IS OQUINOLINE (three-letter code: OJP) (formula: C₁₆H₁₅N₃O₂S).



Mol	Chain	Residues	Atoms						ZeroOcc	AltConf
4	B	1	Total	C	H	N	O	S	0	0
			37	16	15	3	2	1		

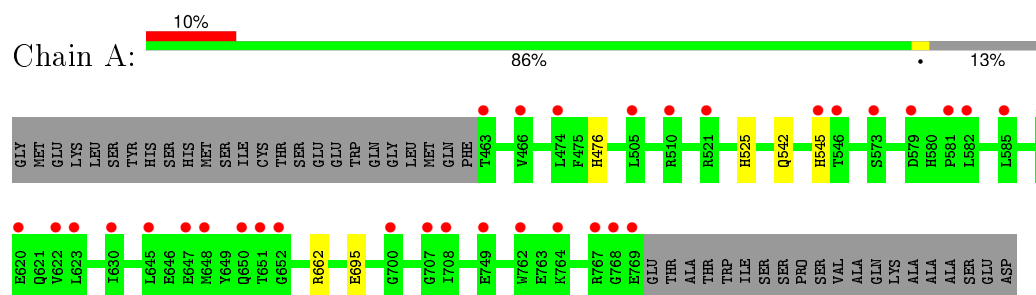
- Molecule 5 is water.

Mol	Chain	Residues	Atoms		ZeroOcc	AltConf
5	A	32	Total	O	0	0
			32	32		
5	B	21	Total	O	0	0
			21	21		

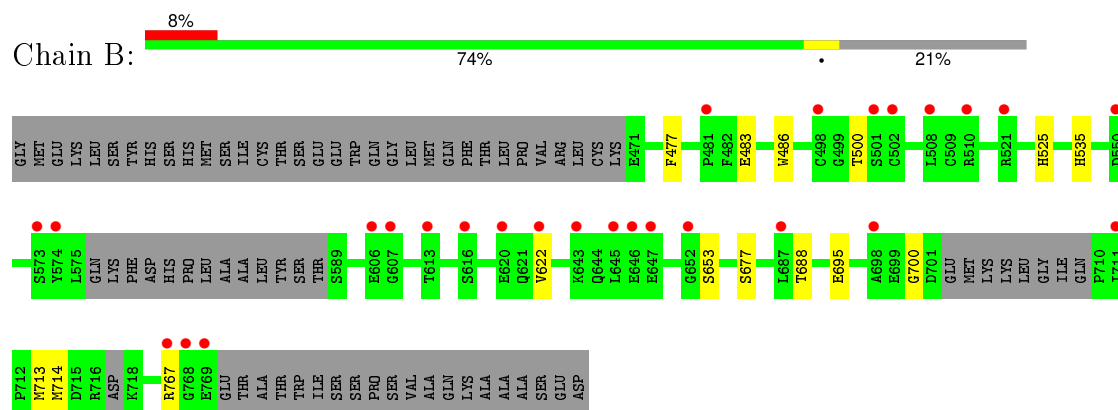
3 Residue-property plots [i](#)

These plots are drawn for all protein, RNA and DNA chains in the entry. The first graphic for a chain summarises the proportions of errors displayed in the second graphic. The second graphic shows the sequence view annotated by issues in geometry and electron density. Residues are color-coded according to the number of geometric quality criteria for which they contain at least one outlier: green = 0, yellow = 1, orange = 2 and red = 3 or more. A red dot above a residue indicates a poor fit to the electron density ($RSRZ > 2$). Stretches of 2 or more consecutive residues without any outlier are shown as a green connector. Residues present in the sample, but not in the model, are shown in grey.

- Molecule 1: cAMP and cAMP-inhibited cGMP 3',5'-cyclic phosphodiesterase 10A



- Molecule 1: cAMP and cAMP-inhibited cGMP 3',5'-cyclic phosphodiesterase 10A



4 Data and refinement statistics

Property	Value	Source
Space group	P 21 21 21	Depositor
Cell constants a, b, c, α , β , γ	48.65Å 81.18Å 153.32Å 90.00° 90.00° 90.00°	Depositor
Resolution (Å)	13.33 – 2.11 13.30 – 2.11	Depositor EDS
% Data completeness (in resolution range)	88.9 (13.33-2.11) 89.5 (13.30-2.11)	Depositor EDS
R_{merge}	(Not available)	Depositor
R_{sym}	0.06	Depositor
$\langle I/\sigma(I) \rangle$ ¹	4.24 (at 2.11Å)	Xtriage
Refinement program	BUSTER 2.11.2	Depositor
R, R_{free}	0.190 , 0.223 0.202 , 0.237	Depositor DCC
R_{free} test set	1615 reflections (5.37%)	DCC
Wilson B-factor (Å ²)	39.4	Xtriage
Anisotropy	0.753	Xtriage
Bulk solvent k_{sol} (e/Å ³), B_{sol} (Å ²)	0.45 , 63.9	EDS
Estimated twinning fraction	No twinning to report.	Xtriage
L-test for twinning ²	$\langle L \rangle = 0.46$, $\langle L^2 \rangle = 0.29$	Xtriage
Outliers	5 of 31703 reflections (0.016%)	Xtriage
F_o, F_c correlation	0.95	EDS
Total number of atoms	9491	wwPDB-VP
Average B, all atoms (Å ²)	67.0	wwPDB-VP

Xtriage's analysis on translational NCS is as follows: *The largest off-origin peak in the Patterson function is 4.43% of the height of the origin peak. No significant pseudotranslation is detected.*

¹Intensities estimated from amplitudes.

²Theoretical values of $\langle |L| \rangle$, $\langle L^2 \rangle$ for acentric reflections are 0.5, 0.375 respectively for untwinned datasets, and 0.333, 0.2 for perfectly twinned datasets.

5 Model quality

5.1 Standard geometry

Bond lengths and bond angles in the following residue types are not validated in this section: ZN, MG, OJP

The Z score for a bond length (or angle) is the number of standard deviations the observed value is removed from the expected value. A bond length (or angle) with $|Z| > 5$ is considered an outlier worth inspection. RMSZ is the root-mean-square of all Z scores of the bond lengths (or angles).

Mol	Chain	Bond lengths		Bond angles	
		RMSZ	$\# Z > 5$	RMSZ	$\# Z > 5$
1	A	0.49	0/2549	0.60	0/3452
1	B	0.49	0/2301	0.59	0/3112
All	All	0.49	0/4850	0.59	0/6564

There are no bond length outliers.

There are no bond angle outliers.

There are no chirality outliers.

There are no planarity outliers.

5.2 Too-close contacts

In the following table, the Non-H and H(model) columns list the number of non-hydrogen atoms and hydrogen atoms in the chain respectively. The H(added) column lists the number of hydrogen atoms added and optimized by MolProbity. The Clashes column lists the number of clashes within the asymmetric unit, whereas Symm-Clashes lists symmetry related clashes.

Mol	Chain	Non-H	H(model)	H(added)	Clashes	Symm-Clashes
1	A	2488	2454	2463	3	0
1	B	2248	2207	2206	7	0
2	A	1	0	0	0	0
2	B	1	0	0	0	0
3	A	1	0	0	0	0
3	B	1	0	0	0	0
4	B	22	15	15	1	0
5	A	32	0	0	0	0
5	B	21	0	0	0	0
All	All	4815	4676	4684	9	0

The all-atom clashscore is defined as the number of clashes found per 1000 atoms (including

hydrogen atoms). The all-atom clashscore for this structure is 1.

All (9) close contacts within the same asymmetric unit are listed below, sorted by their clash magnitude.

Atom-1	Atom-2	Interatomic distance (Å)	Clash overlap (Å)
1:A:525:HIS:ND1	1:A:695:GLU:OE2	2.22	0.72
1:A:542:GLN:O	1:A:545:HIS:NE2	2.36	0.59
1:A:476:HIS:NE2	1:B:767:ARG:NH1	2.58	0.52
1:B:525:HIS:ND1	1:B:695:GLU:OE2	2.43	0.50
1:B:483:GLU:HA	1:B:486:TRP:CE2	2.50	0.47
1:B:677:SER:HB2	1:B:688:THR:HG21	1.99	0.44
1:B:700:GLY:HA3	1:B:714:MET:O	2.19	0.43
1:B:713:MET:HE2	4:B:801:OJP:H222	2.01	0.42
1:B:477:PHE:HB3	1:B:535:HIS:CE1	2.55	0.42

There are no symmetry-related clashes.

5.3 Torsion angles

5.3.1 Protein backbone

In the following table, the Percentiles column shows the percent Ramachandran outliers of the chain as a percentile score with respect to all X-ray entries followed by that with respect to entries of similar resolution.

The Analysed column shows the number of residues for which the backbone conformation was analysed, and the total number of residues.

Mol	Chain	Analysed	Favoured	Allowed	Outliers	Percentiles	
1	A	305/352 (87%)	297 (97%)	8 (3%)	0	100	100
1	B	269/352 (76%)	262 (97%)	7 (3%)	0	100	100
All	All	574/704 (82%)	559 (97%)	15 (3%)	0	100	100

There are no Ramachandran outliers to report.

5.3.2 Protein sidechains

In the following table, the Percentiles column shows the percent sidechain outliers of the chain as a percentile score with respect to all X-ray entries followed by that with respect to entries of similar resolution.

The Analysed column shows the number of residues for which the sidechain conformation was

analysed, and the total number of residues.

Mol	Chain	Analysed	Rotameric	Outliers	Percentiles	
1	A	277/315 (88%)	276 (100%)	1 (0%)	93	96
1	B	250/315 (79%)	247 (99%)	3 (1%)	78	83
All	All	527/630 (84%)	523 (99%)	4 (1%)	86	90

All (4) residues with a non-rotameric sidechain are listed below:

Mol	Chain	Res	Type
1	A	662	ARG
1	B	500	THR
1	B	622	VAL
1	B	653	SER

Some sidechains can be flipped to improve hydrogen bonding and reduce clashes. There are no such sidechains identified.

5.3.3 RNA [i](#)

There are no RNA molecules in this entry.

5.4 Non-standard residues in protein, DNA, RNA chains [i](#)

There are no non-standard protein/DNA/RNA residues in this entry.

5.5 Carbohydrates [i](#)

There are no carbohydrates in this entry.

5.6 Ligand geometry [i](#)

Of 5 ligands modelled in this entry, 4 are monoatomic - leaving 1 for Mogul analysis.

In the following table, the Counts columns list the number of bonds (or angles) for which Mogul statistics could be retrieved, the number of bonds (or angles) that are observed in the model and the number of bonds (or angles) that are defined in the chemical component dictionary. The Link column lists molecule types, if any, to which the group is linked. The Z score for a bond length (or angle) is the number of standard deviations the observed value is removed from the expected value. A bond length (or angle) with $|Z| > 2$ is considered an outlier worth inspection. RMSZ is the root-mean-square of all Z scores of the bond lengths (or angles).

Mol	Type	Chain	Res	Link	Bond lengths			Bond angles		
					Counts	RMSZ	# Z > 2	Counts	RMSZ	# Z > 2
4	0JP	B	801	-	20,25,25	1.31	2 (10%)	22,36,36	2.23	7 (31%)

In the following table, the Chirals column lists the number of chiral outliers, the number of chiral centers analysed, the number of these observed in the model and the number defined in the chemical component dictionary. Similar counts are reported in the Torsion and Rings columns. '-' means no outliers of that kind were identified.

Mol	Type	Chain	Res	Link	Chirals	Torsions	Rings
4	0JP	B	801	-	-	0/4/17/17	0/4/4/4

All (2) bond length outliers are listed below:

Mol	Chain	Res	Type	Atoms	Z	Observed(Å)	Ideal(Å)
4	B	801	0JP	C7-N8	-2.95	1.29	1.35
4	B	801	0JP	C2-C1	2.79	1.44	1.38

All (7) bond angle outliers are listed below:

Mol	Chain	Res	Type	Atoms	Z	Observed(°)	Ideal(°)
4	B	801	0JP	C13-S14-C10	-6.26	88.63	91.83
4	B	801	0JP	C5-C4-C3	-2.65	106.50	109.66
4	B	801	0JP	O20-C1-C18	-2.36	112.03	115.40
4	B	801	0JP	C17-C16-C15	2.73	122.70	118.54
4	B	801	0JP	C22-O19-C18	2.96	122.03	117.54
4	B	801	0JP	C21-O20-C1	3.63	123.05	117.54
4	B	801	0JP	C10-C11-N12	4.06	117.02	108.94

There are no chirality outliers.

There are no torsion outliers.

There are no ring outliers.

1 monomer is involved in 1 short contact:

Mol	Chain	Res	Type	Clashes	Symm-Clashes
4	B	801	0JP	1	0

5.7 Other polymers ⓘ

There are no such residues in this entry.

5.8 Polymer linkage issues ⓘ

There are no chain breaks in this entry.

6 Fit of model and data ⓘ

6.1 Protein, DNA and RNA chains ⓘ

In the following table, the column labelled ‘#RSRZ> 2’ contains the number (and percentage) of RSRZ outliers, followed by percent RSRZ outliers for the chain as percentile scores relative to all X-ray entries and entries of similar resolution. The OWAB column contains the minimum, median, 95th percentile and maximum values of the occupancy-weighted average B-factor per residue. The column labelled ‘Q< 0.9’ lists the number of (and percentage) of residues with an average occupancy less than 0.9.

Mol	Chain	Analysed	<RSRZ>	#RSRZ>2	OWAB(Å ²)	Q<0.9
1	A	307/352 (87%)	0.70	35 (11%) 7 9	38, 64, 112, 194	0
1	B	277/352 (78%)	0.50	27 (9%) 10 14	37, 61, 97, 118	0
All	All	584/704 (82%)	0.60	62 (10%) 8 11	37, 63, 106, 194	0

All (62) RSRZ outliers are listed below:

Mol	Chain	Res	Type	RSRZ
1	A	463	THR	6.3
1	A	546	THR	6.3
1	A	466	VAL	5.2
1	A	648	MET	5.1
1	B	620	GLU	5.1
1	B	481	PRO	4.9
1	B	645	LEU	4.9
1	A	650	GLN	4.6
1	A	645	LEU	4.4
1	B	711	ILE	4.4
1	A	652	GLY	4.3
1	B	501	SER	4.0
1	A	581	PRO	4.0
1	B	647	GLU	3.9
1	A	647	GLU	3.9
1	A	582	LEU	3.6
1	A	651	THR	3.5
1	B	652	GLY	3.5
1	A	768	GLY	3.5
1	A	545	HIS	3.4
1	A	510	ARG	3.3
1	B	502	CYS	3.3
1	A	521	ARG	3.2
1	A	585	LEU	3.2

Continued on next page...

Continued from previous page...

Mol	Chain	Res	Type	RSRZ
1	B	607	GLY	3.1
1	A	606	GLU	3.0
1	A	590	THR	3.0
1	A	749	GLU	2.9
1	A	505	LEU	2.9
1	A	769	GLU	2.9
1	B	573	SER	2.8
1	A	579	ASP	2.8
1	B	687	LEU	2.8
1	A	620	GLU	2.7
1	B	698	ALA	2.7
1	B	508	LEU	2.7
1	B	769	GLU	2.7
1	B	622	VAL	2.6
1	B	498	CYS	2.6
1	A	762	TRP	2.6
1	A	707	GLY	2.5
1	B	606	GLU	2.5
1	A	605	LEU	2.5
1	B	768	GLY	2.4
1	B	616	SER	2.4
1	B	574	TYR	2.4
1	A	700	GLY	2.3
1	A	630	ILE	2.3
1	B	643	LYS	2.3
1	B	646	GLU	2.3
1	A	708	ILE	2.3
1	A	474	LEU	2.3
1	A	623	LEU	2.3
1	A	767	ARG	2.3
1	A	764	LYS	2.2
1	A	573	SER	2.2
1	B	521	ARG	2.2
1	B	613	THR	2.2
1	B	510	ARG	2.1
1	B	767	ARG	2.1
1	B	550	ASP	2.1
1	A	622	VAL	2.0

6.2 Non-standard residues in protein, DNA, RNA chains ⓘ

There are no non-standard protein/DNA/RNA residues in this entry.

6.3 Carbohydrates [i](#)

There are no carbohydrates in this entry.

6.4 Ligands [i](#)

In the following table, the Atoms column lists the number of modelled atoms in the group and the number defined in the chemical component dictionary. LLDF column lists the quality of electron density of the group with respect to its neighbouring residues in protein, DNA or RNA chains. The B-factors column lists the minimum, median, 95th percentile and maximum values of B factors of atoms in the group. The column labelled 'Q< 0.9' lists the number of atoms with occupancy less than 0.9.

Mol	Type	Chain	Res	Atoms	RSCC	RSR	LLDF	B-factors(\AA^2)	Q<0.9
4	OJP	B	801	22/22	0.70	0.16	0.63	54,65,84,85	0
3	ZN	B	803	1/1	0.99	0.06	-1.80	46,46,46,46	0
2	MG	B	802	1/1	0.95	0.05	-2.14	38,38,38,38	0
3	ZN	A	802	1/1	0.99	0.06	-2.38	47,47,47,47	0
2	MG	A	801	1/1	0.97	0.06	-3.04	39,39,39,39	0

6.5 Other polymers [i](#)

There are no such residues in this entry.