



Full wwPDB X-ray Structure Validation Report ⓘ

Feb 1, 2016 – 08:08 AM GMT

PDB ID : 3DI6
Title : HIV-1 RT with pyridazinone non-nucleoside inhibitor
Authors : Harris, S.F.; Villasenor, A.; Dunten, P.
Deposited on : 2008-06-19
Resolution : 2.65 Å(reported)

This is a Full wwPDB X-ray Structure Validation Report for a publicly released PDB entry.
We welcome your comments at validation@mail.wwpdb.org
A user guide is available at
<http://wwpdb.org/validation/2016/XrayValidationReportHelp>
with specific help available everywhere you see the ⓘ symbol.

The following versions of software and data (see [references ⓘ](#)) were used in the production of this report:

MolProbity : 4.02b-467
Mogul : 1.7 (RC4), CSD as536be (2015)
Xtriage (Phenix) : 1.9-1692
EDS : rb-20026688
Percentile statistics : 20151230.v01 (using entries in the PDB archive December 30th 2015)
Refmac : 5.8.0135
CCP4 : 6.5.0
Ideal geometry (proteins) : Engh & Huber (2001)
Ideal geometry (DNA, RNA) : Parkinson et al. (1996)
Validation Pipeline (wwPDB-VP) : trunk26865

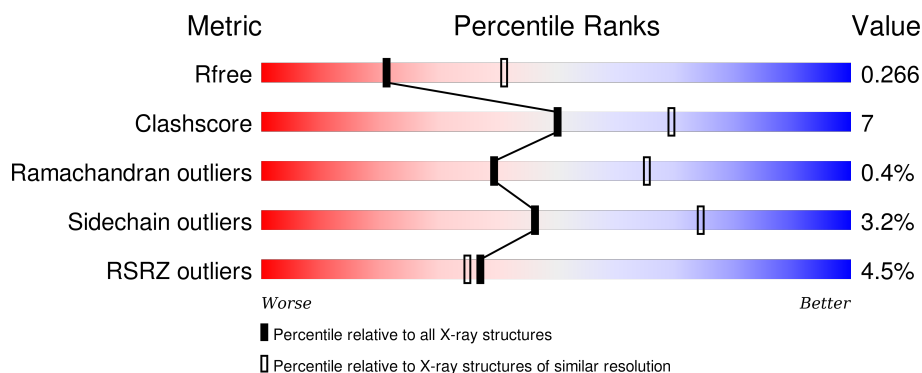
1 Overall quality at a glance

The following experimental techniques were used to determine the structure:

X-RAY DIFFRACTION

The reported resolution of this entry is 2.65 Å.

Percentile scores (ranging between 0-100) for global validation metrics of the entry are shown in the following graphic. The table shows the number of entries on which the scores are based.



Metric	Whole archive (#Entries)	Similar resolution (#Entries, resolution range(Å))
R_{free}	91344	3152 (2.70-2.62)
Clashscore	102246	3524 (2.70-2.62)
Ramachandran outliers	100387	3469 (2.70-2.62)
Sidechain outliers	100360	3469 (2.70-2.62)
RSRZ outliers	91569	3161 (2.70-2.62)

The table below summarises the geometric issues observed across the polymeric chains and their fit to the electron density. The red, orange, yellow and green segments on the lower bar indicate the fraction of residues that contain outliers for ≥ 3 , 2, 1 and 0 types of geometric quality criteria. A grey segment represents the fraction of residues that are not modelled. The numeric value for each fraction is indicated below the corresponding segment, with a dot representing fractions $\leq 5\%$. The upper red bar (where present) indicates the fraction of residues that have poor fit to the electron density. The numeric value is given above the bar.

Mol	Chain	Length	Quality of chain
1	A	561	<div> <div>4%</div> <div>82%</div> <div>14%</div> <div>• •</div> </div>
2	B	440	<div> <div>5%</div> <div>77%</div> <div>13%</div> <div>• 9%</div> </div>

2 Entry composition [i](#)

There are 4 unique types of molecules in this entry. The entry contains 7908 atoms, of which 0 are hydrogens and 0 are deuteriums.

In the tables below, the ZeroOcc column contains the number of atoms modelled with zero occupancy, the AltConf column contains the number of residues with at least one atom in alternate conformation and the Trace column contains the number of residues modelled with at most 2 atoms.

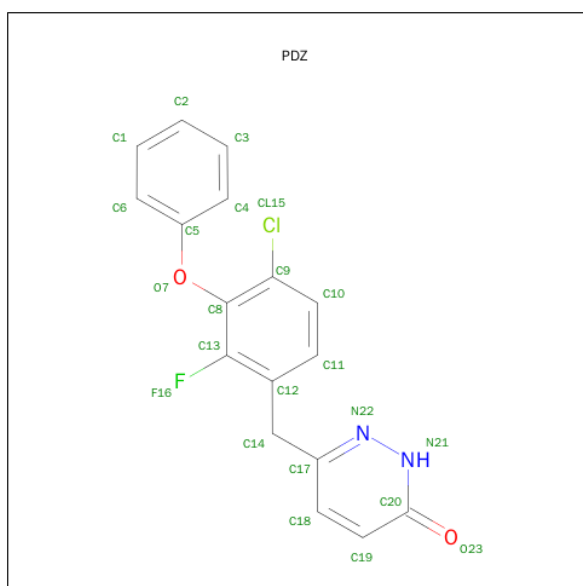
- Molecule 1 is a protein called Reverse transcriptase/ribonuclease H.

Mol	Chain	Residues	Atoms					ZeroOcc	AltConf	Trace
1	A	551	Total	C	N	O	S	0	0	0
			4485	2900	748	829	8			

- Molecule 2 is a protein called p51 RT.

Mol	Chain	Residues	Atoms					ZeroOcc	AltConf	Trace
2	B	400	Total	C	N	O	S	0	0	0
			3303	2152	543	602	6			

- Molecule 3 is 6-(4-CHLORO-2-FLUORO-3-PHENOXYBENZYL)PYRIDAZIN-3(2H)-ONE (three-letter code: PDZ) (formula: C₁₇H₁₂ClF₁N₂O₂).



Mol	Chain	Residues	Atoms					ZeroOcc	AltConf
3	A	1	Total	C	Cl	F	N	O	0
			23	17	1	1	2	2	

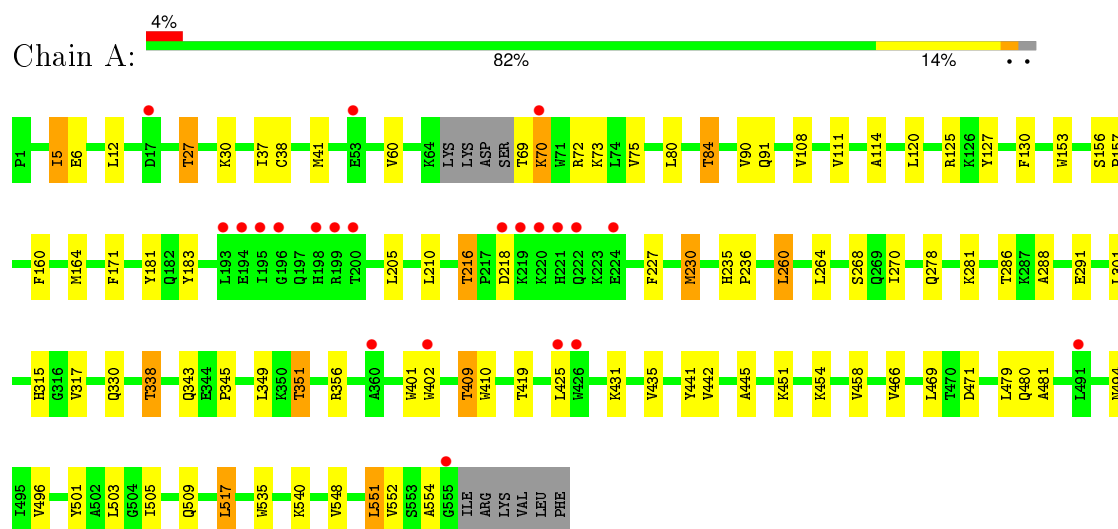
- Molecule 4 is water.

Mol	Chain	Residues	Atoms		ZeroOcc	AltConf
4	A	55	Total 55	O 55	0	0
4	B	42	Total 42	O 42	0	0

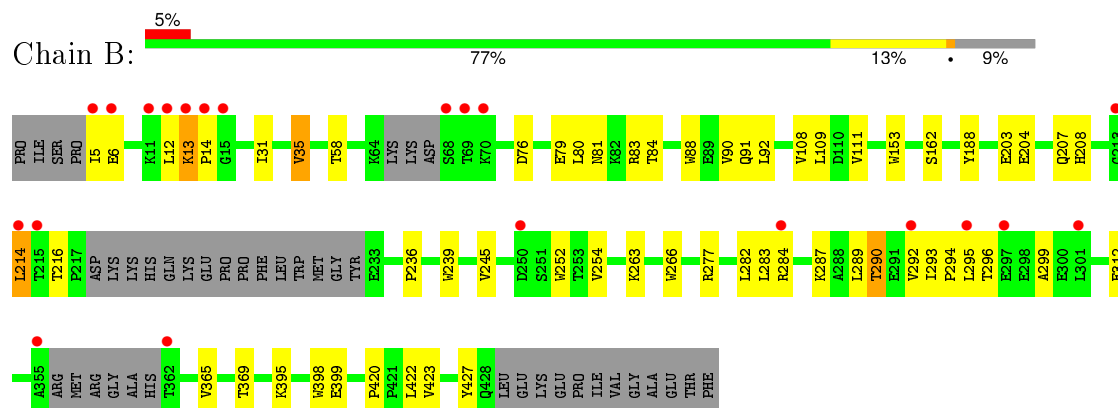
3 Residue-property plots

These plots are drawn for all protein, RNA and DNA chains in the entry. The first graphic for a chain summarises the proportions of errors displayed in the second graphic. The second graphic shows the sequence view annotated by issues in geometry and electron density. Residues are color-coded according to the number of geometric quality criteria for which they contain at least one outlier: green = 0, yellow = 1, orange = 2 and red = 3 or more. A red dot above a residue indicates a poor fit to the electron density ($RSRZ > 2$). Stretches of 2 or more consecutive residues without any outlier are shown as a green connector. Residues present in the sample, but not in the model, are shown in grey.

- Molecule 1: Reverse transcriptase/ribonuclease H



- Molecule 2: p51 RT



4 Data and refinement statistics

Property	Value	Source
Space group	C 2 2 21	Depositor
Cell constants a, b, c, α , β , γ	117.05Å 153.51Å 154.55Å 90.00° 90.00° 90.00°	Depositor
Resolution (Å)	46.88 – 2.65 46.65 – 2.65	Depositor EDS
% Data completeness (in resolution range)	99.6 (46.88-2.65) 99.5 (46.65-2.65)	Depositor EDS
R_{merge}	(Not available)	Depositor
R_{sym}	0.03	Depositor
$\langle I/\sigma(I) \rangle$ ¹	7.99 (at 2.65Å)	Xtriage
Refinement program	REFMAC 5.2.0019	Depositor
R, R_{free}	0.217 , 0.265 0.222 , 0.266	Depositor DCC
R_{free} test set	2064 reflections (5.37%)	DCC
Wilson B-factor (Å ²)	49.9	Xtriage
Anisotropy	0.445	Xtriage
Bulk solvent k_{sol} (e/Å ³), B_{sol} (Å ²)	0.37 , 35.7	EDS
Estimated twinning fraction	No twinning to report.	Xtriage
L-test for twinning ²	$\langle L \rangle = 0.50$, $\langle L^2 \rangle = 0.33$	Xtriage
Outliers	0 of 40515 reflections	Xtriage
F_o, F_c correlation	0.93	EDS
Total number of atoms	7908	wwPDB-VP
Average B, all atoms (Å ²)	51.0	wwPDB-VP

Xtriage's analysis on translational NCS is as follows: *The largest off-origin peak in the Patterson function is 3.98% of the height of the origin peak. No significant pseudotranslation is detected.*

¹Intensities estimated from amplitudes.

²Theoretical values of $\langle |L| \rangle$, $\langle L^2 \rangle$ for acentric reflections are 0.5, 0.375 respectively for untwinned datasets, and 0.333, 0.2 for perfectly twinned datasets.

5 Model quality

5.1 Standard geometry

Bond lengths and bond angles in the following residue types are not validated in this section: PDZ

The Z score for a bond length (or angle) is the number of standard deviations the observed value is removed from the expected value. A bond length (or angle) with $|Z| > 5$ is considered an outlier worth inspection. RMSZ is the root-mean-square of all Z scores of the bond lengths (or angles).

Mol	Chain	Bond lengths		Bond angles	
		RMSZ	# Z >5	RMSZ	# Z >5
1	A	0.40	0/4601	0.53	0/6252
2	B	0.41	0/3395	0.53	0/4616
All	All	0.41	0/7996	0.53	0/10868

There are no bond length outliers.

There are no bond angle outliers.

There are no chirality outliers.

There are no planarity outliers.

5.2 Too-close contacts

In the following table, the Non-H and H(model) columns list the number of non-hydrogen atoms and hydrogen atoms in the chain respectively. The H(added) column lists the number of hydrogen atoms added and optimized by MolProbity. The Clashes column lists the number of clashes within the asymmetric unit, whereas Symm-Clashes lists symmetry related clashes.

Mol	Chain	Non-H	H(model)	H(added)	Clashes	Symm-Clashes
1	A	4485	0	4530	69	0
2	B	3303	0	3331	43	0
3	A	23	0	12	0	0
4	A	55	0	0	4	0
4	B	42	0	0	2	0
All	All	7908	0	7873	109	0

The all-atom clashscore is defined as the number of clashes found per 1000 atoms (including hydrogen atoms). The all-atom clashscore for this structure is 7.

All (109) close contacts within the same asymmetric unit are listed below, sorted by their clash magnitude.

Atom-1	Atom-2	Interatomic distance (Å)	Clash overlap (Å)
1:A:60:VAL:HG12	1:A:75:VAL:HG22	1.48	0.95
1:A:90:VAL:HG12	1:A:91:GLN:NE2	1.80	0.95
2:B:84:THR:HG21	2:B:153:TRP:HE1	1.36	0.91
1:A:90:VAL:HG12	1:A:91:GLN:HE22	1.42	0.84
1:A:216:THR:HG22	4:A:564:HOH:O	1.83	0.78
1:A:458:VAL:HG23	1:A:548:VAL:HG22	1.68	0.76
2:B:282:LEU:HD21	2:B:296:THR:HG22	1.66	0.75
1:A:268:SER:O	1:A:351:THR:HG22	1.85	0.75
1:A:469:LEU:HD21	1:A:480:GLN:HG2	1.73	0.71
1:A:230:MET:HA	1:A:230:MET:HE2	1.72	0.70
1:A:216:THR:CG2	4:A:564:HOH:O	2.39	0.70
1:A:441:TYR:O	1:A:548:VAL:HG21	1.92	0.69
2:B:109:LEU:HD22	2:B:216:THR:HG21	1.73	0.69
2:B:369:THR:HG22	2:B:398:TRP:CH2	2.30	0.67
1:A:27:THR:HG22	1:A:30:LYS:H	1.60	0.67
2:B:91:GLN:O	2:B:92:LEU:HD12	1.95	0.66
2:B:5:ILE:O	2:B:5:ILE:HG22	1.96	0.66
2:B:365:VAL:O	2:B:369:THR:HG23	1.97	0.65
2:B:282:LEU:HD21	2:B:296:THR:CG2	2.27	0.64
1:A:435:VAL:HG22	2:B:290:THR:OG1	1.99	0.62
2:B:292:VAL:HG12	4:B:470:HOH:O	1.99	0.62
2:B:111:VAL:HA	2:B:214:LEU:HD11	1.82	0.61
1:A:260:LEU:HD22	1:A:264:LEU:CD1	2.31	0.61
1:A:401:TRP:HD1	1:A:402:TRP:CD1	2.18	0.61
1:A:317:VAL:HG23	1:A:349:LEU:HD23	1.83	0.61
1:A:84:THR:HG21	1:A:153:TRP:HE1	1.67	0.60
1:A:466:VAL:HG21	1:A:551:LEU:HB2	1.83	0.60
1:A:108:VAL:HG23	1:A:227:PHE:CE1	2.37	0.60
2:B:420:PRO:O	2:B:423:VAL:HG12	2.03	0.59
1:A:286:THR:HG23	1:A:286:THR:O	2.03	0.59
1:A:503:LEU:HD22	1:A:535:TRP:HB2	1.85	0.58
1:A:37:ILE:HG22	1:A:41:MET:CE	2.34	0.57
1:A:80:LEU:O	1:A:84:THR:CG2	2.54	0.56
1:A:5:ILE:HD13	1:A:6:GLU:O	2.05	0.56
2:B:254:VAL:HG13	2:B:283:LEU:HD22	1.87	0.56
2:B:109:LEU:HD22	2:B:216:THR:CG2	2.34	0.56
1:A:114:ALA:HB1	1:A:160:PHE:CE1	2.41	0.56
1:A:454:LYS:HZ3	1:A:554:ALA:HB3	1.71	0.55
1:A:37:ILE:HG22	1:A:41:MET:HE1	1.88	0.55
2:B:266:TRP:HH2	2:B:427:TYR:CZ	2.25	0.54
1:A:230:MET:CE	1:A:230:MET:HA	2.39	0.53
1:A:409:THR:HG23	1:A:410:TRP:N	2.22	0.53

Continued on next page...

Continued from previous page...

Atom-1	Atom-2	Interatomic distance (Å)	Clash overlap (Å)
1:A:494:ASN:HB3	2:B:289:LEU:HD12	1.90	0.53
2:B:35:VAL:HG22	4:B:445:HOH:O	2.09	0.53
1:A:69:THR:O	1:A:70:LYS:HB3	2.09	0.53
2:B:296:THR:HG23	2:B:299:ALA:H	1.75	0.52
2:B:245:VAL:O	2:B:263:LYS:NZ	2.41	0.52
1:A:5:ILE:HD13	1:A:6:GLU:N	2.24	0.52
2:B:13:LYS:HB3	2:B:14:PRO:CD	2.40	0.52
1:A:260:LEU:HD22	1:A:264:LEU:HD11	1.91	0.51
2:B:266:TRP:CH2	2:B:427:TYR:CZ	2.98	0.51
2:B:12:LEU:O	2:B:13:LYS:HB2	2.10	0.51
2:B:80:LEU:O	2:B:84:THR:HG22	2.10	0.51
1:A:479:LEU:HB3	1:A:517:LEU:HD13	1.93	0.51
1:A:458:VAL:CG2	1:A:548:VAL:HG22	2.39	0.51
1:A:315:HIS:HB3	4:A:586:HOH:O	2.10	0.50
2:B:58:THR:HG23	2:B:76:ASP:O	2.12	0.49
2:B:84:THR:HG23	2:B:88:TRP:CD1	2.48	0.49
1:A:111:VAL:HG21	1:A:164:MET:HE1	1.95	0.49
2:B:111:VAL:CA	2:B:214:LEU:HD11	2.41	0.48
1:A:60:VAL:HG11	1:A:130:PHE:CD2	2.48	0.48
1:A:402:TRP:CZ3	1:A:409:THR:HB	2.49	0.48
2:B:31:ILE:O	2:B:35:VAL:HG13	2.11	0.48
1:A:171:PHE:CE1	1:A:205:LEU:HD13	2.48	0.48
1:A:90:VAL:CG1	1:A:91:GLN:HE22	2.20	0.48
1:A:80:LEU:O	1:A:84:THR:HG23	2.12	0.48
1:A:454:LYS:NZ	1:A:554:ALA:CB	2.78	0.47
1:A:12:LEU:HD11	1:A:127:TYR:CE1	2.50	0.47
1:A:401:TRP:HB2	1:A:425:LEU:HD11	1.97	0.46
1:A:73:LYS:HZ1	1:A:75:VAL:HG21	1.80	0.46
2:B:369:THR:HG22	2:B:398:TRP:CZ3	2.50	0.46
1:A:80:LEU:O	1:A:84:THR:HG22	2.15	0.46
1:A:469:LEU:HD21	1:A:480:GLN:CG	2.43	0.45
1:A:501:TYR:CE1	1:A:505:ILE:HD11	2.51	0.45
1:A:451:LYS:HB3	1:A:471:ASP:HA	1.99	0.45
1:A:73:LYS:NZ	1:A:75:VAL:CG2	2.80	0.45
2:B:252:TRP:NE1	2:B:295:LEU:HD22	2.31	0.45
2:B:203:GLU:OE2	2:B:207:GLN:NE2	2.49	0.45
1:A:288:ALA:HB3	1:A:291:GLU:HB2	1.98	0.45
1:A:73:LYS:HZ1	1:A:75:VAL:CG2	2.29	0.45
1:A:445:ALA:CB	1:A:552:VAL:HG12	2.47	0.45
1:A:181:TYR:CE2	1:A:183:TYR:HB2	2.52	0.44
2:B:287:LYS:NZ	2:B:293:ILE:HD11	2.33	0.44

Continued on next page...

Continued from previous page...

Atom-1	Atom-2	Interatomic distance (Å)	Clash overlap (Å)
2:B:108:VAL:HG22	2:B:188:TYR:CD1	2.52	0.44
1:A:343:GLN:HG3	1:A:349:LEU:HD11	2.00	0.44
1:A:442:VAL:HG22	1:A:496:VAL:O	2.18	0.43
1:A:509:GLN:HG3	4:A:572:HOH:O	2.18	0.43
2:B:111:VAL:CB	2:B:214:LEU:HD11	2.49	0.43
1:A:69:THR:O	1:A:70:LYS:CB	2.66	0.42
1:A:278:GLN:HE22	1:A:281:LYS:HE2	1.84	0.42
2:B:236:PRO:HA	2:B:239:TRP:CD2	2.54	0.42
1:A:156:SER:HB2	1:A:157:PRO:HD3	2.00	0.42
2:B:204:GLU:O	2:B:208:HIS:HD2	2.02	0.42
1:A:235:HIS:HB3	1:A:236:PRO:HD2	2.02	0.42
2:B:81:ASN:HA	2:B:84:THR:HG22	2.02	0.42
2:B:5:ILE:CG2	2:B:5:ILE:O	2.66	0.42
1:A:503:LEU:CD2	2:B:422:LEU:HD21	2.50	0.42
1:A:330:GLN:HB2	1:A:338:THR:HG22	2.02	0.41
1:A:454:LYS:O	1:A:552:VAL:HG13	2.20	0.41
1:A:442:VAL:HB	1:A:481:ALA:HB1	2.02	0.41
2:B:79:GLU:OE1	2:B:83:ARG:NE	2.53	0.41
1:A:111:VAL:HG21	1:A:164:MET:CE	2.50	0.41
2:B:293:ILE:HG23	2:B:294:PRO:HD2	2.03	0.41
2:B:84:THR:HG23	2:B:88:TRP:HD1	1.84	0.41
2:B:395:LYS:NZ	2:B:399:GLU:OE2	2.52	0.41
1:A:270:ILE:HA	1:A:351:THR:HB	2.03	0.40
1:A:120:LEU:HD23	1:A:125:ARG:HG2	2.03	0.40
2:B:12:LEU:O	2:B:13:LYS:CB	2.70	0.40
1:A:38:CYS:HA	1:A:41:MET:HE2	2.04	0.40

There are no symmetry-related clashes.

5.3 Torsion angles [i](#)

5.3.1 Protein backbone [i](#)

In the following table, the Percentiles column shows the percent Ramachandran outliers of the chain as a percentile score with respect to all X-ray entries followed by that with respect to entries of similar resolution.

The Analysed column shows the number of residues for which the backbone conformation was analysed, and the total number of residues.

Mol	Chain	Analysed	Favoured	Allowed	Outliers	Percentiles	
1	A	547/561 (98%)	525 (96%)	19 (4%)	3 (0%)	34	59
2	B	392/440 (89%)	381 (97%)	10 (3%)	1 (0%)	46	72
All	All	939/1001 (94%)	906 (96%)	29 (3%)	4 (0%)	39	65

All (4) Ramachandran outliers are listed below:

Mol	Chain	Res	Type
1	A	70	LYS
1	A	356	ARG
2	B	13	LYS
1	A	345	PRO

5.3.2 Protein sidechains ⓘ

In the following table, the Percentiles column shows the percent sidechain outliers of the chain as a percentile score with respect to all X-ray entries followed by that with respect to entries of similar resolution.

The Analysed column shows the number of residues for which the sidechain conformation was analysed, and the total number of residues.

Mol	Chain	Analysed	Rotameric	Outliers	Percentiles	
1	A	491/501 (98%)	473 (96%)	18 (4%)	41	69
2	B	365/400 (91%)	356 (98%)	9 (2%)	55	82
All	All	856/901 (95%)	829 (97%)	27 (3%)	46	74

All (27) residues with a non-rotameric sidechain are listed below:

Mol	Chain	Res	Type
1	A	5	ILE
1	A	27	THR
1	A	72	ARG
1	A	84	THR
1	A	210	LEU
1	A	216	THR
1	A	218	ASP
1	A	230	MET
1	A	260	LEU
1	A	301	LEU
1	A	338	THR
1	A	351	THR

Continued on next page...

Continued from previous page...

Mol	Chain	Res	Type
1	A	409	THR
1	A	419	THR
1	A	431	LYS
1	A	517	LEU
1	A	540	LYS
1	A	551	LEU
2	B	6	GLU
2	B	35	VAL
2	B	90	VAL
2	B	162	SER
2	B	214	LEU
2	B	277	ARG
2	B	284	ARG
2	B	290	THR
2	B	312	GLU

Some sidechains can be flipped to improve hydrogen bonding and reduce clashes. All (10) such sidechains are listed below:

Mol	Chain	Res	Type
1	A	145	GLN
1	A	198	HIS
1	A	278	GLN
1	A	487	GLN
1	A	520	GLN
2	B	151	GLN
2	B	182	GLN
2	B	208	HIS
2	B	278	GLN
2	B	407	GLN

5.3.3 RNA ⓘ

There are no RNA molecules in this entry.

5.4 Non-standard residues in protein, DNA, RNA chains ⓘ

There are no non-standard protein/DNA/RNA residues in this entry.

5.5 Carbohydrates

There are no carbohydrates in this entry.

5.6 Ligand geometry

1 ligand is modelled in this entry.

In the following table, the Counts columns list the number of bonds (or angles) for which Mogul statistics could be retrieved, the number of bonds (or angles) that are observed in the model and the number of bonds (or angles) that are defined in the chemical component dictionary. The Link column lists molecule types, if any, to which the group is linked. The Z score for a bond length (or angle) is the number of standard deviations the observed value is removed from the expected value. A bond length (or angle) with $|Z| > 2$ is considered an outlier worth inspection. RMSZ is the root-mean-square of all Z scores of the bond lengths (or angles).

Mol	Type	Chain	Res	Link	Bond lengths			Bond angles		
					Counts	RMSZ	$\# Z > 2$	Counts	RMSZ	$\# Z > 2$
3	PDZ	A	562	-	23,25,25	0.97	1 (4%)	31,34,34	2.30	5 (16%)

In the following table, the Chirals column lists the number of chiral outliers, the number of chiral centers analysed, the number of these observed in the model and the number defined in the chemical component dictionary. Similar counts are reported in the Torsion and Rings columns. '-' means no outliers of that kind were identified.

Mol	Type	Chain	Res	Link	Chirals	Torsions	Rings
3	PDZ	A	562	-	-	0/8/8/8	0/3/3/3

All (1) bond length outliers are listed below:

Mol	Chain	Res	Type	Atoms	Z	Observed(Å)	Ideal(Å)
3	A	562	PDZ	N21-N22	-2.52	1.28	1.34

All (5) bond angle outliers are listed below:

Mol	Chain	Res	Type	Atoms	Z	Observed(°)	Ideal(°)
3	A	562	PDZ	C12-C14-C17	-6.51	103.19	114.30
3	A	562	PDZ	C14-C17-N22	3.07	118.92	116.13
3	A	562	PDZ	C17-N22-N21	3.81	122.36	120.08
3	A	562	PDZ	F16-C13-C12	4.89	122.51	117.75
3	A	562	PDZ	C11-C12-C13	6.77	120.44	116.42

There are no chirality outliers.

There are no torsion outliers.

There are no ring outliers.

No monomer is involved in short contacts.

5.7 Other polymers

There are no such residues in this entry.

5.8 Polymer linkage issues

There are no chain breaks in this entry.

6 Fit of model and data

6.1 Protein, DNA and RNA chains

In the following table, the column labelled ‘#RSRZ> 2’ contains the number (and percentage) of RSRZ outliers, followed by percent RSRZ outliers for the chain as percentile scores relative to all X-ray entries and entries of similar resolution. The OWAB column contains the minimum, median, 95th percentile and maximum values of the occupancy-weighted average B-factor per residue. The column labelled ‘Q< 0.9’ lists the number of (and percentage) of residues with an average occupancy less than 0.9.

Mol	Chain	Analysed	<RSRZ>	#RSRZ>2			OWAB(Å ²)	Q<0.9
1	A	551/561 (98%)	0.37	22 (3%)	42	40	33, 51, 69, 84	0
2	B	400/440 (90%)	0.28	21 (5%)	30	27	35, 49, 74, 81	0
All	All	951/1001 (95%)	0.33	43 (4%)	37	35	33, 50, 71, 84	0

All (43) RSRZ outliers are listed below:

Mol	Chain	Res	Type	RSRZ
2	B	14	PRO	7.0
2	B	13	LYS	6.7
2	B	6	GLU	5.0
1	A	224	GLU	3.9
1	A	220	LYS	3.9
2	B	295	LEU	3.7
2	B	68	SER	3.7
2	B	12	LEU	3.5
1	A	195	ILE	3.5
1	A	555	GLY	3.3
1	A	53	GLU	3.3
2	B	214	LEU	3.1
1	A	426	TRP	3.1
1	A	193	LEU	3.0
2	B	297	GLU	3.0
2	B	15	GLY	2.9
2	B	213	GLY	2.9
1	A	194	GLU	2.9
2	B	362	THR	2.7
2	B	69	THR	2.7
2	B	215	THR	2.7
2	B	5	ILE	2.6
2	B	11	LYS	2.5
1	A	219	LYS	2.5

Continued on next page...

Continued from previous page...

Mol	Chain	Res	Type	RSRZ
2	B	301	LEU	2.5
1	A	402	TRP	2.5
1	A	196	GLY	2.5
1	A	222	GLN	2.4
1	A	221	HIS	2.3
1	A	17	ASP	2.3
1	A	70	LYS	2.3
1	A	425	LEU	2.3
1	A	199	ARG	2.3
1	A	360	ALA	2.3
2	B	70	LYS	2.3
1	A	200	THR	2.2
1	A	198	HIS	2.2
1	A	218	ASP	2.1
2	B	355	ALA	2.1
1	A	491	LEU	2.1
2	B	292	VAL	2.0
2	B	284	ARG	2.0
2	B	250	ASP	2.0

6.2 Non-standard residues in protein, DNA, RNA chains [i](#)

There are no non-standard protein/DNA/RNA residues in this entry.

6.3 Carbohydrates [i](#)

There are no carbohydrates in this entry.

6.4 Ligands [i](#)

In the following table, the Atoms column lists the number of modelled atoms in the group and the number defined in the chemical component dictionary. LLDF column lists the quality of electron density of the group with respect to its neighbouring residues in protein, DNA or RNA chains. The B-factors column lists the minimum, median, 95th percentile and maximum values of B factors of atoms in the group. The column labelled 'Q< 0.9' lists the number of atoms with occupancy less than 0.9.

Mol	Type	Chain	Res	Atoms	RSCC	RSR	LLDF	B-factors(Å ²)	Q<0.9
3	PDZ	A	562	23/23	0.96	0.18	-0.40	39,45,47,48	0

6.5 Other polymers [i](#)

There are no such residues in this entry.