



Full wwPDB X-ray Structure Validation Report ⓘ

Feb 1, 2016 – 08:12 AM GMT

PDB ID : 3DRC
Title : INVESTIGATION OF THE FUNCTIONAL ROLE OF TRYPTOPHAN-22 IN ESCHERICHIA COLI DIHYDROFOLATE REDUCTASE BY SITE-DIRECTED MUTAGENESIS
Authors : Oatley, S.J.; Kraut, J.
Deposited on : 1992-09-22
Resolution : 1.90 Å(reported)

This is a Full wwPDB X-ray Structure Validation Report for a publicly released PDB entry.
We welcome your comments at validation@mail.wwpdb.org
A user guide is available at
<http://wwpdb.org/validation/2016/XrayValidationReportHelp>
with specific help available everywhere you see the ⓘ symbol.

The following versions of software and data (see [references ⓘ](#)) were used in the production of this report:

MolProbity : 4.02b-467
Mogul : 1.7 (RC4), CSD as536be (2015)
Xtriage (Phenix) : **NOT EXECUTED**
EDS : **NOT EXECUTED**
Percentile statistics : 20151230.v01 (using entries in the PDB archive December 30th 2015)
Ideal geometry (proteins) : Engh & Huber (2001)
Ideal geometry (DNA, RNA) : Parkinson et al. (1996)
Validation Pipeline (wwPDB-VP) : trunk26865

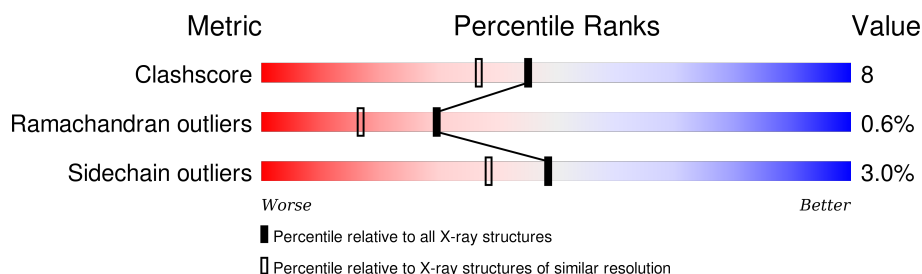
1 Overall quality at a glance

The following experimental techniques were used to determine the structure:

X-RAY DIFFRACTION

The reported resolution of this entry is 1.90 Å.

Percentile scores (ranging between 0-100) for global validation metrics of the entry are shown in the following graphic. The table shows the number of entries on which the scores are based.



Metric	Whole archive (#Entries)	Similar resolution (#Entries, resolution range(Å))
Clashscore	102246	5398 (1.90-1.90)
Ramachandran outliers	100387	5338 (1.90-1.90)
Sidechain outliers	100360	5339 (1.90-1.90)

The table below summarises the geometric issues observed across the polymeric chains and their fit to the electron density. The red, orange, yellow and green segments on the lower bar indicate the fraction of residues that contain outliers for ≥ 3 , 2, 1 and 0 types of geometric quality criteria. A grey segment represents the fraction of residues that are not modelled. The numeric value for each fraction is indicated below the corresponding segment, with a dot representing fractions $\leq 5\%$. The upper red bar (where present) indicates the fraction of residues that have poor fit to the electron density. The numeric value is given above the bar.

Note EDS was not executed.

Mol	Chain	Length	Quality of chain
1	A	159	 70% 22% 8% •
1	B	159	 70% 28% •

2 Entry composition

There are 5 unique types of molecules in this entry. The entry contains 2954 atoms, of which 0 are hydrogens and 0 are deuteriums.

In the tables below, the ZeroOcc column contains the number of atoms modelled with zero occupancy, the AltConf column contains the number of residues with at least one atom in alternate conformation and the Trace column contains the number of residues modelled with at most 2 atoms.

- Molecule 1 is a protein called DIHYDROFOLATE REDUCTASE.

Mol	Chain	Residues	Atoms					ZeroOcc	AltConf	Trace
1	A	159	Total	C	N	O	S	0	0	0
			1246	793	211	235	7			
1	B	159	Total	C	N	O	S	0	0	0
			1262	803	216	236	7			

There are 2 discrepancies between the modelled and reference sequences:

Chain	Residue	Modelled	Actual	Comment	Reference
A	37	ASP	ASN	CONFLICT	UNP P0ABQ4
B	37	ASP	ASN	CONFLICT	UNP P0ABQ4

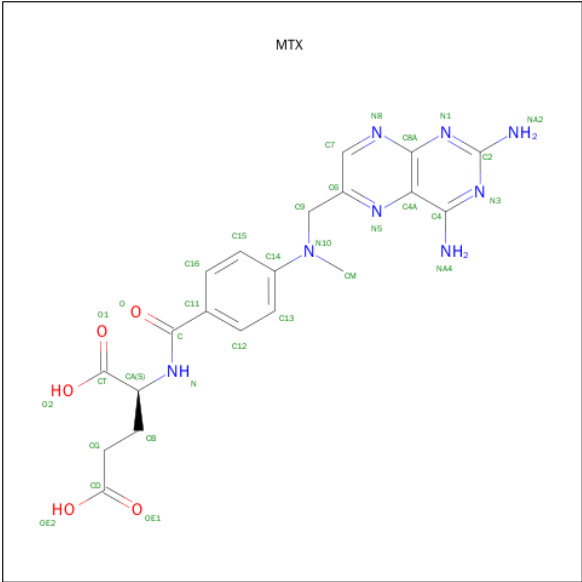
- Molecule 2 is CHLORIDE ION (three-letter code: CL) (formula: Cl).

Mol	Chain	Residues	Atoms		ZeroOcc	AltConf
2	B	1	Total	Cl	0	0
			1	1		
2	A	1	Total	Cl	0	0
			1	1		

- Molecule 3 is CALCIUM ION (three-letter code: CA) (formula: Ca).

Mol	Chain	Residues	Atoms		ZeroOcc	AltConf
3	B	1	Total	Ca	0	0
			1	1		

- Molecule 4 is METHOTREXATE (three-letter code: MTX) (formula: C₂₀H₂₂N₈O₅).



Mol	Chain	Residues	Atoms				ZeroOcc	AltConf
4	A	1	Total	C	N	O	0	0
			33	20	8	5		
4	B	1	Total	C	N	O	0	0
			33	20	8	5		

- Molecule 5 is water.

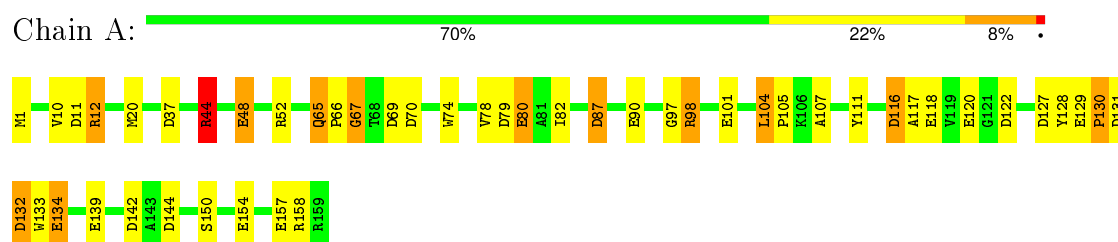
Mol	Chain	Residues	Atoms		ZeroOcc	AltConf
5	A	197	Total	O	0	0
			197	197		
5	B	180	Total	O	0	0
			180	180		

3 Residue-property plots

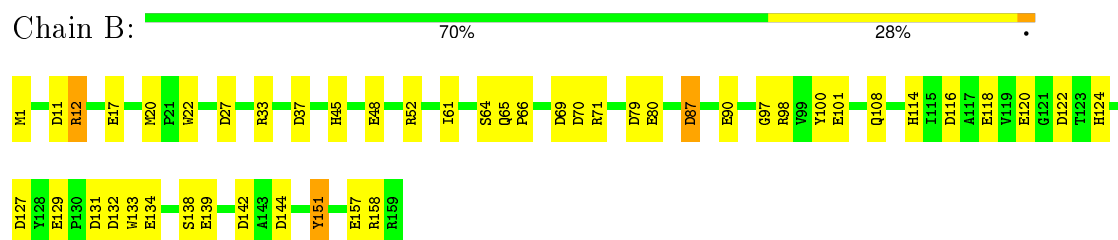
These plots are drawn for all protein, RNA and DNA chains in the entry. The first graphic for a chain summarises the proportions of errors displayed in the second graphic. The second graphic shows the sequence view annotated by issues in geometry and electron density. Residues are color-coded according to the number of geometric quality criteria for which they contain at least one outlier: green = 0, yellow = 1, orange = 2 and red = 3 or more. A red dot above a residue indicates a poor fit to the electron density ($RSRZ > 2$). Stretches of 2 or more consecutive residues without any outlier are shown as a green connector. Residues present in the sample, but not in the model, are shown in grey.

Note EDS was not executed.

• Molecule 1: DIHYDROFOLATE REDUCTASE



• Molecule 1: DIHYDROFOLATE REDUCTASE



4 Data and refinement statistics

Xtriage (Phenix) and EDS were not executed - this section will therefore be incomplete.

Property	Value	Source
Space group	P 61	Depositor
Cell constants a, b, c, α , β , γ	93.12Å 93.12Å 73.87Å 90.00° 90.00° 120.00°	Depositor
Resolution (Å)	(Not available) – 1.90	Depositor
% Data completeness (in resolution range)	(Not available) ((Not available)-1.90)	Depositor
R_{merge}	(Not available)	Depositor
R_{sym}	(Not available)	Depositor
Refinement program	TNT	Depositor
R, R_{free}	0.156 , (Not available)	Depositor
Estimated twinning fraction	No twinning to report.	Xtriage
Total number of atoms	2954	wwPDB-VP
Average B, all atoms (Å ²)	30.0	wwPDB-VP

5 Model quality

5.1 Standard geometry

Bond lengths and bond angles in the following residue types are not validated in this section: MTX, CA, CL

The Z score for a bond length (or angle) is the number of standard deviations the observed value is removed from the expected value. A bond length (or angle) with $|Z| > 5$ is considered an outlier worth inspection. RMSZ is the root-mean-square of all Z scores of the bond lengths (or angles).

Mol	Chain	Bond lengths		Bond angles	
		RMSZ	# Z >5	RMSZ	# Z >5
1	A	1.65	22/1279 (1.7%)	1.75	38/1740 (2.2%)
1	B	1.69	18/1296 (1.4%)	1.89	39/1762 (2.2%)
All	All	1.67	40/2575 (1.6%)	1.82	77/3502 (2.2%)

All (40) bond length outliers are listed below:

Mol	Chain	Res	Type	Atoms	Z	Observed(Å)	Ideal(Å)
1	B	17	GLU	CD-OE2	13.19	1.40	1.25
1	A	118	GLU	CD-OE2	11.71	1.38	1.25
1	B	120	GLU	CD-OE2	11.00	1.37	1.25
1	B	118	GLU	CD-OE2	10.86	1.37	1.25
1	A	134	GLU	CD-OE2	10.75	1.37	1.25
1	A	157	GLU	CD-OE2	10.72	1.37	1.25
1	A	120	GLU	CD-OE2	10.39	1.37	1.25
1	B	157	GLU	CD-OE2	10.37	1.37	1.25
1	B	101	GLU	CD-OE2	10.15	1.36	1.25
1	B	48	GLU	CD-OE2	10.06	1.36	1.25
1	B	80	GLU	CD-OE2	9.99	1.36	1.25
1	A	80	GLU	CD-OE2	9.55	1.36	1.25
1	B	90	GLU	CD-OE1	-8.75	1.16	1.25
1	B	139	GLU	CD-OE1	8.45	1.34	1.25
1	B	138	SER	CB-OG	-8.44	1.31	1.42
1	B	134	GLU	CD-OE1	-8.25	1.16	1.25
1	A	90	GLU	CD-OE2	8.08	1.34	1.25
1	A	48	GLU	CD-OE2	7.67	1.34	1.25
1	A	98	ARG	CG-CD	7.09	1.69	1.51
1	B	12	ARG	CG-CD	6.89	1.69	1.51
1	A	157	GLU	CD-OE1	-6.81	1.18	1.25
1	A	66	PRO	CA-C	-6.68	1.39	1.52
1	A	98	ARG	CD-NE	-6.63	1.35	1.46
1	A	101	GLU	CD-OE2	6.54	1.32	1.25

Continued on next page...

Continued from previous page...

Mol	Chain	Res	Type	Atoms	Z	Observed(Å)	Ideal(Å)
1	B	12	ARG	CD-NE	-6.17	1.35	1.46
1	A	90	GLU	CD-OE1	-6.07	1.19	1.25
1	A	97	GLY	C-O	-5.89	1.14	1.23
1	A	87	ASP	CG-OD1	5.88	1.38	1.25
1	A	139	GLU	CD-OE1	-5.87	1.19	1.25
1	B	122	ASP	CG-OD2	5.73	1.38	1.25
1	A	132	ASP	CG-OD2	5.68	1.38	1.25
1	B	33	ARG	CG-CD	5.45	1.65	1.51
1	B	33	ARG	NE-CZ	5.35	1.40	1.33
1	A	12	ARG	NE-CZ	5.27	1.40	1.33
1	A	154	GLU	CD-OE2	-5.23	1.19	1.25
1	B	127	ASP	CG-OD2	5.17	1.37	1.25
1	B	97	GLY	C-O	-5.14	1.15	1.23
1	A	116	ASP	CG-OD2	5.02	1.36	1.25
1	A	79	ASP	CG-OD2	5.01	1.36	1.25
1	A	44	ARG	CD-NE	-5.01	1.38	1.46

All (77) bond angle outliers are listed below:

Mol	Chain	Res	Type	Atoms	Z	Observed(°)	Ideal(°)
1	B	12	ARG	CD-NE-CZ	19.47	150.86	123.60
1	B	12	ARG	NE-CZ-NH1	-15.03	112.78	120.30
1	A	98	ARG	NE-CZ-NH2	-12.77	113.92	120.30
1	B	52	ARG	NE-CZ-NH1	12.53	126.57	120.30
1	B	12	ARG	NE-CZ-NH2	12.04	126.32	120.30
1	A	12	ARG	NE-CZ-NH1	11.75	126.18	120.30
1	A	98	ARG	CD-NE-CZ	11.51	139.71	123.60
1	B	79	ASP	CB-CG-OD1	11.49	128.64	118.30
1	A	98	ARG	CG-CD-NE	-10.76	89.21	111.80
1	B	37	ASP	CB-CG-OD1	10.58	127.83	118.30
1	B	69	ASP	CB-CG-OD1	10.17	127.45	118.30
1	B	27	ASP	CB-CG-OD1	9.38	126.74	118.30
1	B	87	ASP	CB-CG-OD1	9.23	126.61	118.30
1	B	116	ASP	CB-CG-OD1	9.04	126.44	118.30
1	A	12	ARG	CD-NE-CZ	9.02	136.23	123.60
1	B	37	ASP	CB-CG-OD2	-8.89	110.29	118.30
1	B	33	ARG	NE-CZ-NH1	8.76	124.68	120.30
1	A	70	ASP	CB-CG-OD1	8.66	126.09	118.30
1	B	11	ASP	CB-CG-OD1	8.60	126.04	118.30
1	B	12	ARG	CG-CD-NE	-8.49	93.97	111.80
1	A	79	ASP	CB-CG-OD1	8.27	125.75	118.30
1	A	116	ASP	CB-CG-OD1	8.08	125.57	118.30

Continued on next page...

Continued from previous page...

Mol	Chain	Res	Type	Atoms	Z	Observed(°)	Ideal(°)
1	A	11	ASP	CB-CG-OD1	8.04	125.54	118.30
1	A	69	ASP	CB-CG-OD2	-8.04	111.07	118.30
1	B	100	TYR	CB-CG-CD2	-8.02	116.19	121.00
1	A	65	GLN	CB-CA-C	7.89	126.19	110.40
1	B	122	ASP	CB-CG-OD2	-7.79	111.29	118.30
1	B	87	ASP	CB-CG-OD2	-7.71	111.36	118.30
1	B	127	ASP	CB-CG-OD1	7.70	125.23	118.30
1	B	142	ASP	CB-CG-OD2	-7.69	111.38	118.30
1	B	142	ASP	CB-CG-OD1	7.62	125.16	118.30
1	B	11	ASP	CB-CG-OD2	-7.61	111.45	118.30
1	B	127	ASP	CB-CG-OD2	-7.60	111.46	118.30
1	A	144	ASP	CB-CG-OD1	7.58	125.12	118.30
1	B	116	ASP	CB-CG-OD2	-7.19	111.83	118.30
1	B	144	ASP	CB-CG-OD1	7.16	124.75	118.30
1	A	98	ARG	NE-CZ-NH1	7.03	123.81	120.30
1	B	151	TYR	CB-CG-CD1	6.93	125.16	121.00
1	A	132	ASP	CB-CG-OD2	-6.87	112.12	118.30
1	A	127	ASP	CB-CG-OD1	6.68	124.31	118.30
1	A	69	ASP	CB-CG-OD1	6.61	124.25	118.30
1	B	132	ASP	CB-CG-OD2	-6.57	112.39	118.30
1	B	79	ASP	CB-CG-OD2	-6.44	112.50	118.30
1	A	142	ASP	CB-CG-OD2	-6.34	112.59	118.30
1	A	12	ARG	NE-CZ-NH2	-6.33	117.14	120.30
1	A	144	ASP	CB-CG-OD2	-6.32	112.61	118.30
1	B	122	ASP	CB-CG-OD1	6.27	123.95	118.30
1	A	66	PRO	N-CA-C	6.24	128.32	112.10
1	A	122	ASP	CB-CG-OD1	6.21	123.89	118.30
1	A	111	TYR	CB-CG-CD2	-6.17	117.30	121.00
1	B	98	ARG	NE-CZ-NH1	5.95	123.28	120.30
1	A	48	GLU	CG-CD-OE2	-5.86	106.58	118.30
1	B	139	GLU	CG-CD-OE1	-5.82	106.66	118.30
1	A	52	ARG	NE-CZ-NH1	5.74	123.17	120.30
1	B	80	GLU	CG-CD-OE2	-5.71	106.88	118.30
1	A	101	GLU	CG-CD-OE2	-5.61	107.08	118.30
1	A	87	ASP	CB-CG-OD2	5.60	123.34	118.30
1	A	48	GLU	CG-CD-OE1	5.58	129.47	118.30
1	A	122	ASP	CB-CG-OD2	-5.54	113.31	118.30
1	B	71	ARG	CD-NE-CZ	-5.51	115.88	123.60
1	A	44	ARG	CG-CD-NE	5.48	123.31	111.80
1	B	69	ASP	CB-CG-OD2	-5.46	113.39	118.30
1	B	139	GLU	CG-CD-OE2	5.44	129.19	118.30
1	A	87	ASP	CB-CG-OD1	-5.42	113.42	118.30

Continued on next page...

Continued from previous page...

Mol	Chain	Res	Type	Atoms	Z	Observed(°)	Ideal(°)
1	B	158	ARG	NE-CZ-NH1	5.39	122.99	120.30
1	B	144	ASP	CB-CG-OD2	-5.22	113.60	118.30
1	A	80	GLU	CB-CA-C	-5.15	100.10	110.40
1	A	52	ARG	CB-CG-CD	5.14	124.95	111.60
1	A	37	ASP	CB-CG-OD1	5.13	122.92	118.30
1	B	120	GLU	CG-CD-OE2	-5.11	108.08	118.30
1	B	45	HIS	CA-CB-CG	-5.08	104.95	113.60
1	A	142	ASP	CB-CG-OD1	5.08	122.87	118.30
1	A	80	GLU	CG-CD-OE2	-5.06	108.18	118.30
1	B	98	ARG	NE-CZ-NH2	-5.05	117.78	120.30
1	A	139	GLU	CG-CD-OE1	5.04	128.37	118.30
1	A	44	ARG	NE-CZ-NH2	-5.03	117.79	120.30
1	A	44	ARG	NE-CZ-NH1	5.03	122.81	120.30

There are no chirality outliers.

There are no planarity outliers.

5.2 Too-close contacts

In the following table, the Non-H and H(model) columns list the number of non-hydrogen atoms and hydrogen atoms in the chain respectively. The H(added) column lists the number of hydrogen atoms added and optimized by MolProbity. The Clashes column lists the number of clashes within the asymmetric unit, whereas Symm-Clashes lists symmetry related clashes.

Mol	Chain	Non-H	H(model)	H(added)	Clashes	Symm-Clashes
1	A	1246	0	1178	20	0
1	B	1262	0	1217	17	1
2	A	1	0	0	0	0
2	B	1	0	0	0	0
3	B	1	0	0	0	0
4	A	33	0	20	1	0
4	B	33	0	20	1	0
5	A	197	0	0	5	0
5	B	180	0	0	7	1
All	All	2954	0	2435	39	1

The all-atom clashscore is defined as the number of clashes found per 1000 atoms (including hydrogen atoms). The all-atom clashscore for this structure is 8.

All (39) close contacts within the same asymmetric unit are listed below, sorted by their clash magnitude.

Atom-1	Atom-2	Interatomic distance (Å)	Clash overlap (Å)
1:B:124:HIS:HB3	5:B:792:HOH:O	1.64	0.98
1:A:128:TYR:O	1:A:130:PRO:HD3	1.79	0.83
1:A:78:VAL:O	1:A:82:ILE:HD12	1.77	0.82
1:B:12:ARG:NH2	5:B:712:HOH:O	2.27	0.63
1:A:67:GLY:HA2	1:A:74:TRP:CD2	2.33	0.63
1:A:67:GLY:HA2	1:A:74:TRP:CE2	2.35	0.62
1:A:44:ARG:NH2	1:A:65:GLN:HB2	2.15	0.61
1:A:134:GLU:HG3	5:A:579:HOH:O	2.04	0.57
1:B:12:ARG:HB2	5:B:792:HOH:O	2.05	0.57
1:B:64:SER:HB2	1:B:65:GLN:NE2	2.21	0.55
1:B:108:GLN:HG2	5:B:640:HOH:O	2.07	0.54
1:B:64:SER:HB2	1:B:65:GLN:HE22	1.73	0.54
1:A:20:MET:HG2	5:A:555:HOH:O	2.10	0.52
1:A:131:ASP:N	5:A:554:HOH:O	2.42	0.52
1:A:130:PRO:O	1:A:133:TRP:O	2.28	0.51
1:B:12:ARG:NH2	5:B:792:HOH:O	2.42	0.50
1:B:64:SER:CB	1:B:65:GLN:NE2	2.74	0.50
1:B:65:GLN:HB3	1:B:66:PRO:CD	2.43	0.49
1:A:130:PRO:N	5:A:554:HOH:O	2.46	0.48
1:A:12:ARG:NH2	5:A:575:HOH:O	2.40	0.48
1:A:44:ARG:O	1:A:44:ARG:HG3	2.13	0.48
1:B:20:MET:CE	1:B:22:TRP:CH2	2.97	0.47
1:B:114:HIS:O	1:B:151:TYR:HA	2.14	0.46
1:B:124:HIS:CD2	1:B:124:HIS:N	2.83	0.46
1:A:10:VAL:HG13	1:A:117:ALA:O	2.16	0.45
1:A:104:LEU:N	1:A:105:PRO:CD	2.78	0.45
1:A:116:ASP:OD2	1:A:150:SER:HB2	2.17	0.45
1:B:131:ASP:CB	5:B:788:HOH:O	2.64	0.44
1:B:129:GLU:O	1:B:133:TRP:HD1	2.01	0.44
1:B:12:ARG:CZ	5:B:792:HOH:O	2.66	0.44
4:B:361:MTX:HM1	4:B:361:MTX:H13	1.67	0.44
1:B:20:MET:HE3	1:B:22:TRP:CH2	2.53	0.44
1:A:128:TYR:CE2	1:A:130:PRO:HG3	2.53	0.44
1:A:98:ARG:CZ	1:A:98:ARG:HB3	2.47	0.43
1:A:129:GLU:O	1:A:132:ASP:HB2	2.19	0.43
1:B:20:MET:HE2	1:B:22:TRP:CH2	2.54	0.42
1:A:44:ARG:O	1:A:48:GLU:HG2	2.20	0.41
4:A:161:MTX:HM1	4:A:161:MTX:H13	1.76	0.41
1:A:107:ALA:O	1:A:158:ARG:NH1	2.55	0.40

All (1) symmetry-related close contacts are listed below. The label for Atom-2 includes the symmetry operator and encoded unit-cell translations to be applied.

Atom-1	Atom-2	Interatomic distance (Å)	Clash overlap (Å)
1:B:70:ASP:OD2	5:B:786:HOH:O[5_564]	1.87	0.33

5.3 Torsion angles [i](#)

5.3.1 Protein backbone [i](#)

In the following table, the Percentiles column shows the percent Ramachandran outliers of the chain as a percentile score with respect to all X-ray entries followed by that with respect to entries of similar resolution.

The Analysed column shows the number of residues for which the backbone conformation was analysed, and the total number of residues.

Mol	Chain	Analysed	Favoured	Allowed	Outliers	Percentiles	
1	A	157/159 (99%)	150 (96%)	5 (3%)	2 (1%)	15	4
1	B	157/159 (99%)	157 (100%)	0	0	100	100
All	All	314/318 (99%)	307 (98%)	5 (2%)	2 (1%)	30	17

All (2) Ramachandran outliers are listed below:

Mol	Chain	Res	Type
1	A	67	GLY
1	A	130	PRO

5.3.2 Protein sidechains [i](#)

In the following table, the Percentiles column shows the percent sidechain outliers of the chain as a percentile score with respect to all X-ray entries followed by that with respect to entries of similar resolution.

The Analysed column shows the number of residues for which the sidechain conformation was analysed, and the total number of residues.

Mol	Chain	Analysed	Rotameric	Outliers	Percentiles	
1	A	129/136 (95%)	124 (96%)	5 (4%)	39	27
1	B	134/136 (98%)	131 (98%)	3 (2%)	60	53
All	All	263/272 (97%)	255 (97%)	8 (3%)	48	38

All (8) residues with a non-rotameric sidechain are listed below:

Mol	Chain	Res	Type
1	A	1	MET
1	A	44	ARG
1	A	80	GLU
1	A	87	ASP
1	A	104	LEU
1	B	1	MET
1	B	61	ILE
1	B	87	ASP

Some sidechains can be flipped to improve hydrogen bonding and reduce clashes. All (5) such sidechains are listed below:

Mol	Chain	Res	Type
1	A	18	ASN
1	A	108	GLN
1	B	65	GLN
1	B	124	HIS
1	B	146	GLN

5.3.3 RNA [i](#)

There are no RNA molecules in this entry.

5.4 Non-standard residues in protein, DNA, RNA chains [i](#)

There are no non-standard protein/DNA/RNA residues in this entry.

5.5 Carbohydrates [i](#)

There are no carbohydrates in this entry.

5.6 Ligand geometry [i](#)

Of 5 ligands modelled in this entry, 3 are monoatomic - leaving 2 for Mogul analysis.

In the following table, the Counts columns list the number of bonds (or angles) for which Mogul statistics could be retrieved, the number of bonds (or angles) that are observed in the model and the number of bonds (or angles) that are defined in the chemical component dictionary. The Link column lists molecule types, if any, to which the group is linked. The Z score for a bond length (or angle) is the number of standard deviations the observed value is removed from the expected

value. A bond length (or angle) with $|Z| > 2$ is considered an outlier worth inspection. RMSZ is the root-mean-square of all Z scores of the bond lengths (or angles).

Mol	Type	Chain	Res	Link	Bond lengths			Bond angles		
					Counts	RMSZ	# Z > 2	Counts	RMSZ	# Z > 2
4	MTX	A	161	-	27,35,35	1.89	10 (37%)	30,49,49	2.17	8 (26%)
4	MTX	B	361	-	27,35,35	1.78	5 (18%)	30,49,49	2.27	10 (33%)

In the following table, the Chirals column lists the number of chiral outliers, the number of chiral centers analysed, the number of these observed in the model and the number defined in the chemical component dictionary. Similar counts are reported in the Torsion and Rings columns. '-' means no outliers of that kind were identified.

Mol	Type	Chain	Res	Link	Chirals	Torsions	Rings
4	MTX	A	161	-	-	0/19/25/25	0/3/3/3
4	MTX	B	361	-	-	0/19/25/25	0/3/3/3

All (15) bond length outliers are listed below:

Mol	Chain	Res	Type	Atoms	Z	Observed(Å)	Ideal(Å)
4	B	361	MTX	C16-C15	-3.73	1.32	1.38
4	B	361	MTX	C2-NA2	-3.65	1.26	1.34
4	A	161	MTX	C4-NA4	-3.31	1.24	1.34
4	A	161	MTX	C9-C6	-2.85	1.46	1.51
4	B	361	MTX	C7-C6	-2.66	1.34	1.39
4	A	161	MTX	C16-C15	-2.02	1.35	1.38
4	A	161	MTX	C7-C6	2.09	1.42	1.39
4	A	161	MTX	CM-N10	2.24	1.49	1.46
4	A	161	MTX	O-C	2.27	1.27	1.23
4	A	161	MTX	CA-N	2.32	1.50	1.46
4	A	161	MTX	C8A-N8	2.58	1.41	1.37
4	B	361	MTX	C9-N10	3.07	1.51	1.47
4	A	161	MTX	C12-C11	3.10	1.44	1.39
4	A	161	MTX	C9-N10	4.03	1.53	1.47
4	B	361	MTX	C8A-N1	4.14	1.44	1.36

All (18) bond angle outliers are listed below:

Mol	Chain	Res	Type	Atoms	Z	Observed(°)	Ideal(°)
4	B	361	MTX	N1-C2-N3	-7.97	115.31	127.44
4	A	161	MTX	N1-C2-N3	-7.31	116.32	127.44
4	A	161	MTX	C13-C14-N10	-3.66	116.13	121.68
4	B	361	MTX	C6-C9-N10	-3.51	107.68	113.78
4	B	361	MTX	C13-C14-N10	-3.37	116.57	121.68
4	A	161	MTX	C7-N8-C8A	-2.55	113.92	116.93
4	B	361	MTX	O-C-N	-2.07	118.70	122.44
4	B	361	MTX	CM-N10-C14	2.03	123.04	119.56

Continued on next page...

Continued from previous page...

Mol	Chain	Res	Type	Atoms	Z	Observed(°)	Ideal(°)
4	A	161	MTX	C15-C14-N10	2.07	124.82	121.68
4	A	161	MTX	NA4-C4-N3	2.30	124.15	116.45
4	B	361	MTX	NA4-C4-N3	2.60	125.13	116.45
4	B	361	MTX	NA2-C2-N3	2.61	121.52	117.20
4	A	161	MTX	CM-N10-C14	2.62	124.05	119.56
4	B	361	MTX	C11-C-N	2.69	121.72	116.93
4	B	361	MTX	NA2-C2-N1	2.80	123.17	117.80
4	B	361	MTX	C2-N3-C4	3.83	128.80	116.70
4	A	161	MTX	C2-N3-C4	4.04	129.44	116.70
4	A	161	MTX	NA2-C2-N3	4.29	124.30	117.20

There are no chirality outliers.

There are no torsion outliers.

There are no ring outliers.

2 monomers are involved in 2 short contacts:

Mol	Chain	Res	Type	Clashes	Symm-Clashes
4	A	161	MTX	1	0
4	B	361	MTX	1	0

5.7 Other polymers [i](#)

There are no such residues in this entry.

5.8 Polymer linkage issues [i](#)

There are no chain breaks in this entry.

6 Fit of model and data ⓘ

6.1 Protein, DNA and RNA chains ⓘ

EDS was not executed - this section will therefore be empty.

6.2 Non-standard residues in protein, DNA, RNA chains ⓘ

EDS was not executed - this section will therefore be empty.

6.3 Carbohydrates ⓘ

EDS was not executed - this section will therefore be empty.

6.4 Ligands ⓘ

EDS was not executed - this section will therefore be empty.

6.5 Other polymers ⓘ

EDS was not executed - this section will therefore be empty.