



# Full wwPDB X-ray Structure Validation Report ⓘ

Feb 1, 2016 – 03:55 PM GMT

PDB ID : 4DVI  
Title : Crystal structure of Tankyrase 1 with IWR2  
Authors : Huang, X.  
Deposited on : 2012-02-23  
Resolution : 1.90 Å(reported)

This is a Full wwPDB X-ray Structure Validation Report for a publicly released PDB entry.  
We welcome your comments at [validation@mail.wwpdb.org](mailto:validation@mail.wwpdb.org)  
A user guide is available at  
<http://wwpdb.org/validation/2016/XrayValidationReportHelp>  
with specific help available everywhere you see the ⓘ symbol.

---

The following versions of software and data (see [references ⓘ](#)) were used in the production of this report:

MolProbity : 4.02b-467  
Mogul : 1.7 (RC4), CSD as536be (2015)  
Xtriage (Phenix) : 1.9-1692  
EDS : rb-20026688  
Percentile statistics : 20151230.v01 (using entries in the PDB archive December 30th 2015)  
Refmac : 5.8.0135  
CCP4 : 6.5.0  
Ideal geometry (proteins) : Engh & Huber (2001)  
Ideal geometry (DNA, RNA) : Parkinson et al. (1996)  
Validation Pipeline (wwPDB-VP) : trunk26865

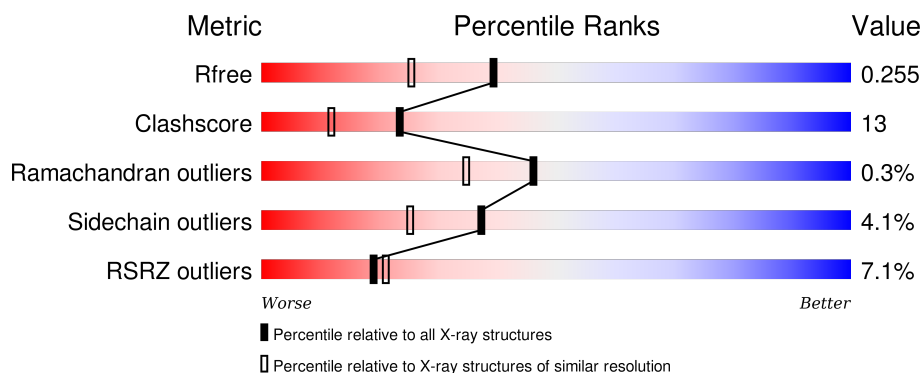
# 1 Overall quality at a glance

The following experimental techniques were used to determine the structure:

## *X-RAY DIFFRACTION*

The reported resolution of this entry is 1.90 Å.

Percentile scores (ranging between 0-100) for global validation metrics of the entry are shown in the following graphic. The table shows the number of entries on which the scores are based.



Metric	Whole archive (#Entries)	Similar resolution (#Entries, resolution range(Å))
$R_{free}$	91344	4755 (1.90-1.90)
Clashscore	102246	5398 (1.90-1.90)
Ramachandran outliers	100387	5338 (1.90-1.90)
Sidechain outliers	100360	5339 (1.90-1.90)
RSRZ outliers	91569	4766 (1.90-1.90)

The table below summarises the geometric issues observed across the polymeric chains and their fit to the electron density. The red, orange, yellow and green segments on the lower bar indicate the fraction of residues that contain outliers for  $\geq 3$ , 2, 1 and 0 types of geometric quality criteria. A grey segment represents the fraction of residues that are not modelled. The numeric value for each fraction is indicated below the corresponding segment, with a dot representing fractions  $\leq 5\%$ . The upper red bar (where present) indicates the fraction of residues that have poor fit to the electron density. The numeric value is given above the bar.

Mol	Chain	Length	Quality of chain
1	A	217	<div> <div>7%</div> <div> <div></div> <div>75%</div> <div>18%</div> <div>• 5%</div> </div> </div>
1	B	217	<div> <div>6%</div> <div> <div></div> <div>70%</div> <div>19%</div> <div>• 8%</div> </div> </div>

## 2 Entry composition

There are 4 unique types of molecules in this entry. The entry contains 3644 atoms, of which 0 are hydrogens and 0 are deuteriums.

In the tables below, the ZeroOcc column contains the number of atoms modelled with zero occupancy, the AltConf column contains the number of residues with at least one atom in alternate conformation and the Trace column contains the number of residues modelled with at most 2 atoms.

- Molecule 1 is a protein called Tankyrase-1.

Mol	Chain	Residues	Atoms					ZeroOcc	AltConf	Trace
1	A	206	Total	C	N	O	S	0	0	0
			1664	1047	304	302	11			
1	B	200	Total	C	N	O	S	0	0	0
			1602	1002	297	293	10			

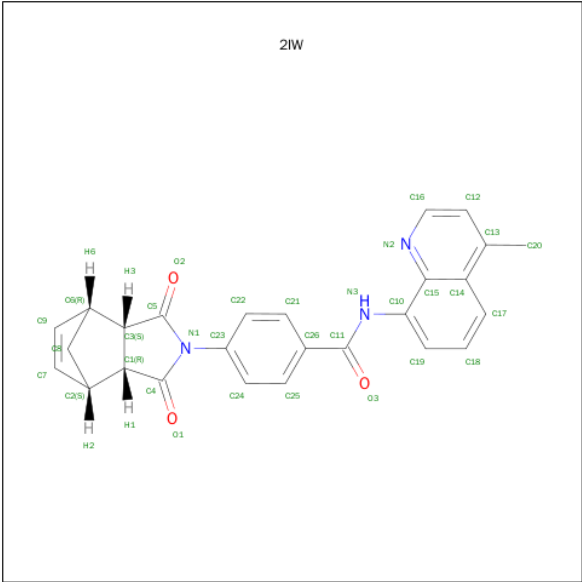
There are 12 discrepancies between the modelled and reference sequences:

Chain	Residue	Modelled	Actual	Comment	Reference
A	1315	HIS	-	EXPRESSION TAG	UNP O95271
A	1316	HIS	-	EXPRESSION TAG	UNP O95271
A	1317	HIS	-	EXPRESSION TAG	UNP O95271
A	1318	HIS	-	EXPRESSION TAG	UNP O95271
A	1319	HIS	-	EXPRESSION TAG	UNP O95271
A	1320	HIS	-	EXPRESSION TAG	UNP O95271
B	1315	HIS	-	EXPRESSION TAG	UNP O95271
B	1316	HIS	-	EXPRESSION TAG	UNP O95271
B	1317	HIS	-	EXPRESSION TAG	UNP O95271
B	1318	HIS	-	EXPRESSION TAG	UNP O95271
B	1319	HIS	-	EXPRESSION TAG	UNP O95271
B	1320	HIS	-	EXPRESSION TAG	UNP O95271

- Molecule 2 is ZINC ION (three-letter code: ZN) (formula: Zn).

Mol	Chain	Residues	Atoms		ZeroOcc	AltConf
2	B	1	Total	Zn	0	0
			1	1		
2	A	1	Total	Zn	0	0
			1	1		

- Molecule 3 is 4-[(3AR,4S,7R,7AS)-1,3-DIOXO-1,3,3A,4,7,7A-HEXAHYDRO-2H-4,7-METHANOISOINDOL-2-YL]-N-(4-METHYLQUINOLIN-8-YL)BENZAMIDE (three-letter code: 2IW) (formula: C<sub>26</sub>H<sub>21</sub>N<sub>3</sub>O<sub>3</sub>).



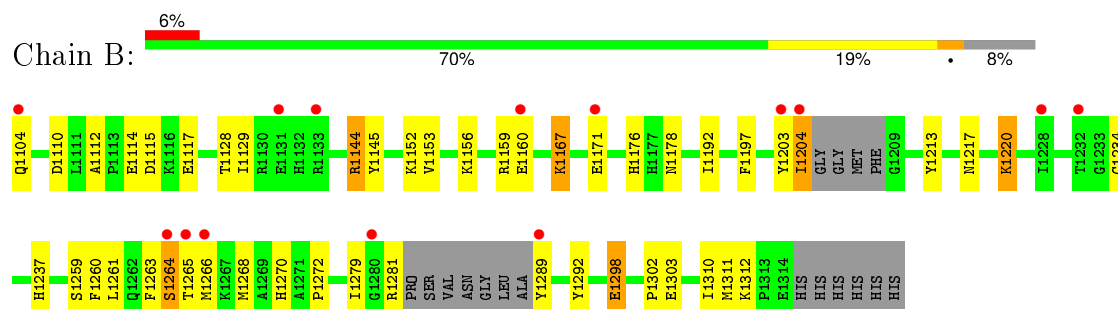
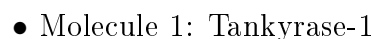
Mol	Chain	Residues	Atoms				ZeroOcc	AltConf
3	A	1	Total	C	N	O	0	0
			32	26	3	3		
3	B	1	Total	C	N	O	0	0
			32	26	3	3		

- Molecule 4 is water.

Mol	Chain	Residues	Atoms		ZeroOcc	AltConf
4	A	180	Total	O	0	0
			180	180		
4	B	132	Total	O	0	0
			132	132		



- Molecule 1: Tankyrase-1



## 4 Data and refinement statistics

Property	Value	Source
Space group	P 21 21 21	Depositor
Cell constants a, b, c, $\alpha$ , $\beta$ , $\gamma$	41.47Å 77.94Å 146.54Å 90.00° 90.00° 90.00°	Depositor
Resolution (Å)	50.00 – 1.90 41.39 – 1.91	Depositor EDS
% Data completeness (in resolution range)	(Not available) (50.00-1.90) 99.4 (41.39-1.91)	Depositor EDS
$R_{merge}$	0.10	Depositor
$R_{sym}$	(Not available)	Depositor
$\langle I/\sigma(I) \rangle$ <sup>1</sup>	2.65 (at 1.91Å)	Xtriage
Refinement program	CNS	Depositor
R, $R_{free}$	0.248 , 0.258 0.243 , 0.255	Depositor DCC
$R_{free}$ test set	1889 reflections (5.00%)	DCC
Wilson B-factor (Å <sup>2</sup> )	25.7	Xtriage
Anisotropy	0.714	Xtriage
Bulk solvent $k_{sol}$ (e/Å <sup>3</sup> ), $B_{sol}$ (Å <sup>2</sup> )	0.32 , 40.6	EDS
Estimated twinning fraction	No twinning to report.	Xtriage
L-test for twinning <sup>2</sup>	$\langle  L  \rangle = 0.51$ , $\langle L^2 \rangle = 0.35$	Xtriage
Outliers	0 of 37802 reflections	Xtriage
$F_o, F_c$ correlation	0.94	EDS
Total number of atoms	3644	wwPDB-VP
Average B, all atoms (Å <sup>2</sup> )	30.0	wwPDB-VP

Xtriage's analysis on translational NCS is as follows: *The analyses of the Patterson function reveals a significant off-origin peak that is 19.83 % of the origin peak, indicating pseudo translational symmetry. The chance of finding a peak of this or larger height randomly in a structure without pseudo translational symmetry is equal to 9.9374e-03. The detected translational NCS is most likely also responsible for the elevated intensity ratio.*

<sup>1</sup>Intensities estimated from amplitudes.

<sup>2</sup>Theoretical values of  $\langle |L| \rangle$ ,  $\langle L^2 \rangle$  for acentric reflections are 0.5, 0.375 respectively for untwinned datasets, and 0.333, 0.2 for perfectly twinned datasets.

## 5 Model quality [i](#)

### 5.1 Standard geometry [i](#)

Bond lengths and bond angles in the following residue types are not validated in this section: 2IW, ZN

The Z score for a bond length (or angle) is the number of standard deviations the observed value is removed from the expected value. A bond length (or angle) with  $|Z| > 5$  is considered an outlier worth inspection. RMSZ is the root-mean-square of all Z scores of the bond lengths (or angles).

Mol	Chain	Bond lengths		Bond angles	
		RMSZ	# Z  >5	RMSZ	# Z  >5
1	A	0.65	1/1704 (0.1%)	0.76	3/2288 (0.1%)
1	B	0.59	0/1639	0.72	0/2203
All	All	0.62	1/3343 (0.0%)	0.74	3/4491 (0.1%)

All (1) bond length outliers are listed below:

Mol	Chain	Res	Type	Atoms	Z	Observed(Å)	Ideal(Å)
1	A	1130	ARG	CZ-NH2	-5.54	1.25	1.33

All (3) bond angle outliers are listed below:

Mol	Chain	Res	Type	Atoms	Z	Observed(°)	Ideal(°)
1	A	1130	ARG	NE-CZ-NH1	8.51	124.56	120.30
1	A	1133	ARG	NE-CZ-NH2	-5.53	117.54	120.30
1	A	1159	ARG	NE-CZ-NH2	-5.37	117.61	120.30

There are no chirality outliers.

There are no planarity outliers.

### 5.2 Too-close contacts [i](#)

In the following table, the Non-H and H(model) columns list the number of non-hydrogen atoms and hydrogen atoms in the chain respectively. The H(added) column lists the number of hydrogen atoms added and optimized by MolProbity. The Clashes column lists the number of clashes within the asymmetric unit, whereas Symm-Clashes lists symmetry related clashes.

Mol	Chain	Non-H	H(model)	H(added)	Clashes	Symm-Clashes
1	A	1664	0	1588	43	0
1	B	1602	0	1514	44	0

*Continued on next page...*

*Continued from previous page...*

Mol	Chain	Non-H	H(model)	H(added)	Clashes	Symm-Clashes
2	A	1	0	0	0	0
2	B	1	0	0	0	0
3	A	32	0	21	4	0
3	B	32	0	21	2	0
4	A	180	0	0	6	0
4	B	132	0	0	5	0
All	All	3644	0	3144	86	0

The all-atom clashscore is defined as the number of clashes found per 1000 atoms (including hydrogen atoms). The all-atom clashscore for this structure is 13.

All (86) close contacts within the same asymmetric unit are listed below, sorted by their clash magnitude.

Atom-1	Atom-2	Interatomic distance (Å)	Clash overlap (Å)
1:A:1283:SER:OG	1:A:1286:GLY:HA3	1.69	0.93
1:B:1268:MET:HE1	1:B:1272:PRO:HD3	1.55	0.86
1:B:1144:ARG:HD2	1:B:1311:MET:SD	2.20	0.81
1:A:1263:PHE:CZ	1:B:1261:LEU:HG	2.21	0.74
1:A:1179:GLU:OE2	1:A:1253:ARG:NH1	2.20	0.74
1:A:1207:MET:CB	1:A:1266:MET:HB2	2.17	0.74
1:B:1112:ALA:HB1	1:B:1114:GLU:OE2	1.91	0.70
1:B:1128:THR:HB	1:B:1217:ASN:HA	1.75	0.69
1:A:1180:ARG:NH2	1:A:1216:GLU:OE1	2.27	0.67
1:A:1298:GLU:H	1:A:1298:GLU:CD	1.95	0.67
1:A:1173:ASN:ND2	1:A:1258:LYS:HB2	2.11	0.66
1:B:1217:ASN:OD1	1:B:1289:TYR:CB	2.46	0.63
1:B:1203:TYR:HD1	1:B:1204:ILE:O	1.83	0.61
1:B:1312:LYS:HD3	4:B:1545:HOH:O	2.01	0.61
1:A:1130:ARG:HD2	1:A:1217:ASN:ND2	2.16	0.60
1:A:1217:ASN:HB2	4:A:1582:HOH:O	2.02	0.60
1:B:1281:ARG:HH11	1:B:1281:ARG:CB	2.14	0.59
1:B:1220:LYS:HZ2	1:B:1220:LYS:HB2	1.68	0.59
1:B:1259:SER:HB3	1:B:1279:ILE:HG13	1.83	0.59
1:B:1178:ASN:ND2	4:B:1547:HOH:O	2.28	0.59
1:B:1234:CYS:SG	1:B:1237:HIS:HB2	2.44	0.58
1:A:1130:ARG:HH11	1:A:1217:ASN:HD21	1.53	0.56
1:A:1173:ASN:HD21	1:A:1258:LYS:HB2	1.69	0.56
1:B:1279:ILE:HG12	1:B:1292:TYR:CD1	2.41	0.56
1:B:1289:TYR:N	4:B:1606:HOH:O	2.39	0.55
1:B:1167:LYS:HD2	1:B:1171:GLU:OE1	2.08	0.54
1:B:1281:ARG:HH11	1:B:1281:ARG:HB3	1.72	0.54

*Continued on next page...*



*Continued from previous page...*

Atom-1	Atom-2	Interatomic distance (Å)	Clash overlap (Å)
1:A:1128:THR:HB	1:A:1217:ASN:HA	1.89	0.54
1:A:1207:MET:N	4:A:1649:HOH:O	2.42	0.53
1:B:1114:GLU:CD	1:B:1114:GLU:H	2.12	0.52
1:A:1284:VAL:O	1:A:1286:GLY:N	2.42	0.52
1:A:1266:MET:HG2	1:A:1267:LYS:N	2.25	0.51
1:A:1196:GLY:O	3:A:1402:2IW:H18	2.10	0.50
3:A:1402:2IW:H19	3:A:1402:2IW:O3	2.11	0.50
1:A:1253:ARG:HG3	1:A:1303:GLU:OE2	2.12	0.50
1:A:1208:PHE:CD2	3:A:1402:2IW:H8	2.47	0.50
1:A:1153:VAL:HB	1:A:1302:PRO:O	2.12	0.49
1:A:1130:ARG:CD	1:A:1217:ASN:ND2	2.75	0.49
1:B:1159:ARG:NH1	1:B:1159:ARG:HG3	2.29	0.48
1:B:1281:ARG:NH1	1:B:1281:ARG:CB	2.77	0.47
1:A:1133:ARG:CZ	1:A:1288:ALA:HB2	2.44	0.47
1:A:1208:PHE:HZ	1:A:1224:TYR:HH	1.60	0.47
1:A:1270:HIS:C	1:A:1270:HIS:CD2	2.88	0.47
1:A:1130:ARG:NH1	1:A:1217:ASN:HD21	2.13	0.47
1:A:1296:ARG:HD3	4:A:1549:HOH:O	2.14	0.47
1:A:1177:HIS:CE1	4:A:1658:HOH:O	2.67	0.47
1:B:1192:ILE:HD13	1:B:1197:PHE:CE1	2.50	0.47
1:B:1204:ILE:C	4:B:1601:HOH:O	2.54	0.47
1:B:1268:MET:HE3	1:B:1270:HIS:O	2.16	0.46
1:B:1159:ARG:NH2	1:B:1303:GLU:OE2	2.49	0.46
1:A:1149:ARG:HB3	1:A:1307:THR:HB	1.97	0.46
1:B:1144:ARG:HD3	1:B:1145:TYR:O	2.15	0.46
1:B:1281:ARG:NH1	1:B:1281:ARG:HB2	2.30	0.46
1:A:1113:PRO:HA	1:A:1118:TYR:CG	2.50	0.46
1:B:1117:GLU:OE2	1:B:1152:LYS:HE2	2.15	0.45
1:A:1124:GLU:HG2	1:A:1251:PHE:CZ	2.52	0.45
1:B:1104:GLN:O	1:B:1104:GLN:HG3	2.17	0.45
1:B:1213:TYR:CD1	3:B:1402:2IW:H1	2.52	0.45
1:B:1129:ILE:HD11	1:B:1145:TYR:CE2	2.53	0.44
1:B:1167:LYS:HE3	1:B:1167:LYS:HB3	1.82	0.43
1:B:1176:HIS:HD2	4:B:1543:HOH:O	2.01	0.43
1:B:1153:VAL:HB	1:B:1302:PRO:O	2.18	0.43
1:B:1167:LYS:CD	1:B:1171:GLU:OE1	2.66	0.43
1:A:1263:PHE:CE2	1:B:1261:LEU:HG	2.53	0.43
1:B:1298:GLU:H	1:B:1298:GLU:CD	2.20	0.43
1:B:1112:ALA:O	1:B:1115:ASP:CB	2.66	0.43
1:B:1203:TYR:CD1	1:B:1204:ILE:O	2.69	0.42
3:B:1402:2IW:H19	3:B:1402:2IW:O3	2.17	0.42

*Continued on next page...*

Continued from previous page...

Atom-1	Atom-2	Interatomic distance (Å)	Clash overlap (Å)
1:B:1264:SER:OG	1:B:1265:THR:N	2.52	0.42
1:B:1310:ILE:O	1:B:1310:ILE:HG13	2.19	0.42
1:A:1261:LEU:HD23	1:A:1281:ARG:NH1	2.34	0.42
1:A:1298:GLU:CD	1:A:1298:GLU:N	2.69	0.42
1:A:1173:ASN:O	1:A:1174:HIS:HB2	2.19	0.42
1:A:1123:GLU:HA	1:A:1123:GLU:OE1	2.18	0.42
1:A:1180:ARG:NH1	1:A:1180:ARG:HG3	2.35	0.42
1:A:1130:ARG:HD2	1:A:1217:ASN:HD22	1.85	0.42
1:A:1177:HIS:HE1	4:A:1658:HOH:O	2.01	0.42
1:A:1129:ILE:HD11	1:A:1145:TYR:CE2	2.55	0.41
1:B:1159:ARG:HH11	1:B:1159:ARG:HG3	1.86	0.41
1:B:1156:LYS:O	1:B:1160:GLU:HG3	2.20	0.41
1:A:1296:ARG:HB3	1:A:1298:GLU:OE2	2.21	0.41
1:A:1208:PHE:CE2	3:A:1402:2IW:H8	2.55	0.41
1:A:1113:PRO:HA	1:A:1118:TYR:CD2	2.56	0.41
1:B:1260:PHE:CG	1:B:1272:PRO:HG2	2.55	0.40
1:A:1263:PHE:CZ	1:B:1263:PHE:CB	3.04	0.40
1:A:1110:ASP:CG	4:A:1633:HOH:O	2.60	0.40

There are no symmetry-related clashes.

## 5.3 Torsion angles [i](#)

### 5.3.1 Protein backbone [i](#)

In the following table, the Percentiles column shows the percent Ramachandran outliers of the chain as a percentile score with respect to all X-ray entries followed by that with respect to entries of similar resolution.

The Analysed column shows the number of residues for which the backbone conformation was analysed, and the total number of residues.

Mol	Chain	Analysed	Favoured	Allowed	Outliers	Percentiles	
1	A	198/217 (91%)	194 (98%)	4 (2%)	0	100	100
1	B	194/217 (89%)	188 (97%)	5 (3%)	1 (0%)	34	21
All	All	392/434 (90%)	382 (97%)	9 (2%)	1 (0%)	46	35

All (1) Ramachandran outliers are listed below:

Mol	Chain	Res	Type
1	B	1266	MET

### 5.3.2 Protein sidechains [i](#)

In the following table, the Percentiles column shows the percent sidechain outliers of the chain as a percentile score with respect to all X-ray entries followed by that with respect to entries of similar resolution.

The Analysed column shows the number of residues for which the sidechain conformation was analysed, and the total number of residues.

Mol	Chain	Analysed	Rotameric	Outliers	Percentiles	
1	A	175/185 (95%)	168 (96%)	7 (4%)	38	26
1	B	166/185 (90%)	159 (96%)	7 (4%)	36	24
All	All	341/370 (92%)	327 (96%)	14 (4%)	37	25

All (14) residues with a non-rotameric sidechain are listed below:

Mol	Chain	Res	Type
1	A	1110	ASP
1	A	1130	ARG
1	A	1131	GLU
1	A	1170	SER
1	A	1266	MET
1	A	1270	HIS
1	A	1281	ARG
1	B	1110	ASP
1	B	1144	ARG
1	B	1167	LYS
1	B	1204	ILE
1	B	1220	LYS
1	B	1264	SER
1	B	1298	GLU

Some sidechains can be flipped to improve hydrogen bonding and reduce clashes. All (8) such sidechains are listed below:

Mol	Chain	Res	Type
1	A	1119	GLN
1	A	1166	GLN
1	A	1173	ASN
1	A	1217	ASN

*Continued on next page...*

*Continued from previous page...*

Mol	Chain	Res	Type
1	A	1270	HIS
1	B	1201	HIS
1	B	1223	GLN
1	B	1270	HIS

### 5.3.3 RNA [i](#)

There are no RNA molecules in this entry.

### 5.4 Non-standard residues in protein, DNA, RNA chains [i](#)

There are no non-standard protein/DNA/RNA residues in this entry.

### 5.5 Carbohydrates [i](#)

There are no carbohydrates in this entry.

### 5.6 Ligand geometry [i](#)

Of 4 ligands modelled in this entry, 2 are monoatomic - leaving 2 for Mogul analysis.

In the following table, the Counts columns list the number of bonds (or angles) for which Mogul statistics could be retrieved, the number of bonds (or angles) that are observed in the model and the number of bonds (or angles) that are defined in the chemical component dictionary. The Link column lists molecule types, if any, to which the group is linked. The Z score for a bond length (or angle) is the number of standard deviations the observed value is removed from the expected value. A bond length (or angle) with  $|Z| > 2$  is considered an outlier worth inspection. RMSZ is the root-mean-square of all Z scores of the bond lengths (or angles).

Mol	Type	Chain	Res	Link	Bond lengths			Bond angles		
					Counts	RMSZ	$\# Z  > 2$	Counts	RMSZ	$\# Z  > 2$
3	2IW	A	1402	-	37,37,37	2.77	18 (48%)	56,56,56	2.96	22 (39%)
3	2IW	B	1402	-	37,37,37	2.65	18 (48%)	56,56,56	3.09	26 (46%)

In the following table, the Chirals column lists the number of chiral outliers, the number of chiral centers analysed, the number of these observed in the model and the number defined in the chemical component dictionary. Similar counts are reported in the Torsion and Rings columns. '-' means no outliers of that kind were identified.

Mol	Type	Chain	Res	Link	Chirals	Torsions	Rings
3	2IW	A	1402	-	-	0/12/49/49	0/4/6/6
3	2IW	B	1402	-	-	0/12/49/49	0/4/6/6

All (36) bond length outliers are listed below:

Mol	Chain	Res	Type	Atoms	Z	Observed(Å)	Ideal(Å)
3	A	1402	2IW	C23-N1	-5.88	1.35	1.44
3	B	1402	2IW	C23-N1	-5.55	1.35	1.44
3	B	1402	2IW	C6-C9	2.01	1.57	1.51
3	B	1402	2IW	C6-C3	2.05	1.61	1.56
3	B	1402	2IW	C13-C14	2.10	1.46	1.42
3	A	1402	2IW	C1-C4	2.12	1.54	1.51
3	A	1402	2IW	C6-C3	2.48	1.62	1.56
3	A	1402	2IW	C13-C14	2.52	1.47	1.42
3	A	1402	2IW	C18-C19	2.63	1.44	1.38
3	A	1402	2IW	C24-C23	2.89	1.45	1.39
3	A	1402	2IW	C22-C21	2.99	1.44	1.38
3	B	1402	2IW	C22-C21	3.05	1.44	1.38
3	A	1402	2IW	C21-C26	3.15	1.44	1.39
3	B	1402	2IW	C24-C23	3.15	1.45	1.39
3	A	1402	2IW	C22-C23	3.22	1.45	1.39
3	B	1402	2IW	C25-C24	3.28	1.44	1.38
3	A	1402	2IW	C25-C24	3.30	1.44	1.38
3	B	1402	2IW	C18-C17	3.39	1.44	1.36
3	B	1402	2IW	C18-C19	3.51	1.46	1.38
3	B	1402	2IW	C12-C13	3.54	1.45	1.37
3	A	1402	2IW	C12-C13	3.59	1.45	1.37
3	B	1402	2IW	C19-C10	3.62	1.46	1.38
3	B	1402	2IW	C22-C23	3.68	1.46	1.39
3	A	1402	2IW	C12-C16	3.71	1.46	1.38
3	B	1402	2IW	C25-C26	3.71	1.45	1.39
3	B	1402	2IW	C21-C26	3.80	1.45	1.39
3	B	1402	2IW	C12-C16	3.82	1.46	1.38
3	A	1402	2IW	C19-C10	3.97	1.47	1.38
3	B	1402	2IW	C14-C15	4.05	1.53	1.42
3	A	1402	2IW	C25-C26	4.07	1.46	1.39
3	A	1402	2IW	C16-N2	4.11	1.40	1.32
3	A	1402	2IW	C14-C15	4.17	1.53	1.42
3	A	1402	2IW	C18-C17	4.20	1.46	1.36
3	B	1402	2IW	C16-N2	4.22	1.41	1.32
3	B	1402	2IW	C15-N2	4.95	1.43	1.37
3	A	1402	2IW	C15-N2	6.17	1.45	1.37

All (48) bond angle outliers are listed below:

Mol	Chain	Res	Type	Atoms	Z	Observed(°)	Ideal(°)
3	A	1402	2IW	C2-C1-C3	-6.21	94.55	102.82
3	B	1402	2IW	C2-C1-C3	-5.84	95.05	102.82
3	B	1402	2IW	O1-C4-C1	-5.04	121.70	127.48
3	B	1402	2IW	C14-C15-N2	-5.01	115.37	122.65
3	B	1402	2IW	O2-C5-C3	-4.97	121.78	127.48
3	A	1402	2IW	C14-C15-N2	-4.74	115.76	122.65
3	A	1402	2IW	O1-C4-C1	-4.73	122.06	127.48
3	A	1402	2IW	O2-C5-C3	-4.60	122.20	127.48
3	B	1402	2IW	C12-C16-N2	-3.81	118.55	124.56
3	A	1402	2IW	C12-C16-N2	-3.75	118.65	124.56
3	A	1402	2IW	C22-C21-C26	-3.61	116.58	120.76
3	B	1402	2IW	C6-C3-C5	-3.23	110.72	114.76
3	B	1402	2IW	C22-C21-C26	-3.18	117.08	120.76
3	A	1402	2IW	C6-C3-C5	-3.12	110.86	114.76
3	B	1402	2IW	C2-C7-C9	-3.00	98.77	108.02
3	B	1402	2IW	C8-C6-C3	-2.71	95.70	100.05
3	A	1402	2IW	C25-C24-C23	-2.60	117.00	120.36
3	A	1402	2IW	C2-C7-C9	-2.59	100.03	108.02
3	B	1402	2IW	C25-C24-C23	-2.57	117.04	120.36
3	A	1402	2IW	C22-C23-N1	-2.32	116.69	119.62
3	B	1402	2IW	C22-C23-N1	-2.32	116.69	119.62
3	B	1402	2IW	C8-C6-C9	-2.30	92.31	99.61
3	A	1402	2IW	C8-C6-C9	-2.15	92.78	99.61
3	A	1402	2IW	C24-C25-C26	-2.10	118.33	120.76
3	B	1402	2IW	C17-C18-C19	-2.06	117.54	120.96
3	B	1402	2IW	C24-C25-C26	-2.02	118.42	120.76
3	A	1402	2IW	C18-C17-C14	2.03	123.77	120.88
3	B	1402	2IW	C15-C10-N3	2.06	120.13	115.50
3	B	1402	2IW	C6-C9-C7	2.14	114.62	108.02
3	A	1402	2IW	C24-C23-C22	2.43	124.18	119.13
3	A	1402	2IW	C12-C13-C14	2.44	122.23	118.31
3	B	1402	2IW	C18-C17-C14	2.52	124.46	120.88
3	B	1402	2IW	C24-C23-C22	2.59	124.50	119.13
3	B	1402	2IW	C12-C13-C14	2.61	122.51	118.31
3	B	1402	2IW	C8-C2-C1	3.94	106.37	100.05
3	B	1402	2IW	C25-C26-C21	4.07	124.64	118.60
3	A	1402	2IW	C25-C26-C21	4.11	124.70	118.60
3	A	1402	2IW	O2-C5-N1	4.55	129.00	124.33
3	A	1402	2IW	C8-C2-C1	4.67	107.55	100.05
3	B	1402	2IW	O2-C5-N1	5.28	129.75	124.33
3	A	1402	2IW	C6-C3-C1	5.44	110.06	102.82
3	B	1402	2IW	O1-C4-N1	5.65	130.14	124.33

*Continued on next page...*

*Continued from previous page...*

Mol	Chain	Res	Type	Atoms	Z	Observed(°)	Ideal(°)
3	B	1402	2IW	C6-C3-C1	5.71	110.42	102.82
3	A	1402	2IW	O1-C4-N1	5.79	130.28	124.33
3	A	1402	2IW	C16-N2-C15	7.46	126.22	117.37
3	B	1402	2IW	C16-N2-C15	7.94	126.79	117.37
3	A	1402	2IW	C10-C15-N2	9.76	125.34	117.55
3	B	1402	2IW	C10-C15-N2	9.95	125.50	117.55

There are no chirality outliers.

There are no torsion outliers.

There are no ring outliers.

2 monomers are involved in 6 short contacts:

Mol	Chain	Res	Type	Clashes	Symm-Clashes
3	A	1402	2IW	4	0
3	B	1402	2IW	2	0

## 5.7 Other polymers [i](#)

There are no such residues in this entry.

## 5.8 Polymer linkage issues [i](#)

There are no chain breaks in this entry.

## 6 Fit of model and data

### 6.1 Protein, DNA and RNA chains

In the following table, the column labelled ‘#RSRZ> 2’ contains the number (and percentage) of RSRZ outliers, followed by percent RSRZ outliers for the chain as percentile scores relative to all X-ray entries and entries of similar resolution. The OWAB column contains the minimum, median, 95<sup>th</sup> percentile and maximum values of the occupancy-weighted average B-factor per residue. The column labelled ‘Q< 0.9’ lists the number of (and percentage) of residues with an average occupancy less than 0.9.

Mol	Chain	Analysed	<RSRZ>	#RSRZ>2	OWAB(Å <sup>2</sup> )	Q<0.9
1	A	206/217 (94%)	0.38	15 (7%) 18 20	19, 26, 42, 47	0
1	B	200/217 (92%)	0.47	14 (7%) 19 21	20, 30, 45, 51	0
All	All	406/434 (93%)	0.42	29 (7%) 19 21	19, 28, 43, 51	0

All (29) RSRZ outliers are listed below:

Mol	Chain	Res	Type	RSRZ
1	B	1265	THR	8.9
1	A	1104	GLN	6.5
1	A	1207	MET	6.5
1	B	1133	ARG	5.9
1	B	1104	GLN	5.8
1	A	1203	TYR	5.4
1	A	1208	PHE	4.7
1	B	1289	TYR	4.4
1	B	1264	SER	3.4
1	A	1267	LYS	3.2
1	A	1270	HIS	3.1
1	B	1266	MET	3.1
1	B	1203	TYR	3.0
1	A	1284	VAL	3.0
1	A	1210	ALA	2.9
1	A	1161	ARG	2.9
1	A	1174	HIS	2.9
1	B	1131	GLU	2.8
1	A	1286	GLY	2.5
1	B	1228	ILE	2.5
1	B	1160	GLU	2.5
1	A	1116	LYS	2.4
1	B	1204	ILE	2.4
1	B	1171	GLU	2.3

*Continued on next page...*



*Continued from previous page...*

Mol	Chain	Res	Type	RSRZ
1	A	1131	GLU	2.2
1	A	1266	MET	2.2
1	A	1263	PHE	2.2
1	B	1232	THR	2.1
1	B	1280	GLY	2.0

## 6.2 Non-standard residues in protein, DNA, RNA chains [i](#)

There are no non-standard protein/DNA/RNA residues in this entry.

## 6.3 Carbohydrates [i](#)

There are no carbohydrates in this entry.

## 6.4 Ligands [i](#)

In the following table, the Atoms column lists the number of modelled atoms in the group and the number defined in the chemical component dictionary. LLDF column lists the quality of electron density of the group with respect to its neighbouring residues in protein, DNA or RNA chains. The B-factors column lists the minimum, median, 95<sup>th</sup> percentile and maximum values of B factors of atoms in the group. The column labelled 'Q < 0.9' lists the number of atoms with occupancy less than 0.9.

Mol	Type	Chain	Res	Atoms	RSCC	RSR	LLDF	B-factors(Å <sup>2</sup> )	Q<0.9
3	2IW	B	1402	32/32	0.94	0.11	-0.25	23,27,31,33	0
3	2IW	A	1402	32/32	0.92	0.12	-0.28	23,26,28,29	0
2	ZN	B	1401	1/1	1.00	0.08	-0.96	30,30,30,30	0
2	ZN	A	1401	1/1	1.00	0.06	-1.59	20,20,20,20	0

## 6.5 Other polymers [i](#)

There are no such residues in this entry.