



Full wwPDB X-ray Structure Validation Report ⓘ

Feb 1, 2016 – 03:56 PM GMT

PDB ID : 4DVK
Title : Crystal structure of the glycoprotein Erns from the pestivirus BVDV-1 strain NCP-7
Authors : Krey, T.; Bontems, F.; Vonnrhein, C.; Vaney, M.-C.; Bricogne, G.; Ruemenapf, T.; Rey, F.A.
Deposited on : 2012-02-23
Resolution : 2.21 Å(reported)

This is a Full wwPDB X-ray Structure Validation Report for a publicly released PDB entry.
We welcome your comments at validation@mail.wwpdb.org
A user guide is available at
<http://wwpdb.org/validation/2016/XrayValidationReportHelp>
with specific help available everywhere you see the ⓘ symbol.

The following versions of software and data (see [references ⓘ](#)) were used in the production of this report:

MolProbity : 4.02b-467
Mogul : 1.7 (RC4), CSD as536be (2015)
Xtriage (Phenix) : 1.9-1692
EDS : rb-20026688
Percentile statistics : 20151230.v01 (using entries in the PDB archive December 30th 2015)
Refmac : 5.8.0135
CCP4 : 6.5.0
Ideal geometry (proteins) : Engh & Huber (2001)
Ideal geometry (DNA, RNA) : Parkinson et al. (1996)
Validation Pipeline (wwPDB-VP) : trunk26865

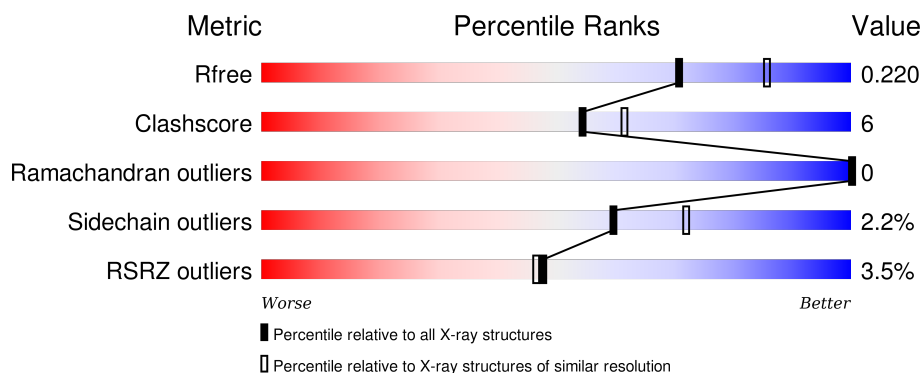
1 Overall quality at a glance

The following experimental techniques were used to determine the structure:

X-RAY DIFFRACTION



The reported resolution of this entry is 2.21 Å.

Percentile scores (ranging between 0-100) for global validation metrics of the entry are shown in the following graphic. The table shows the number of entries on which the scores are based.



Metric	Whole archive (#Entries)	Similar resolution (#Entries, resolution range(Å))
R_{free}	91344	4405 (2.24-2.20)
Clashscore	102246	5146 (2.24-2.20)
Ramachandran outliers	100387	5065 (2.24-2.20)
Sidechain outliers	100360	5066 (2.24-2.20)
RSRZ outliers	91569	4414 (2.24-2.20)

The table below summarises the geometric issues observed across the polymeric chains and their fit to the electron density. The red, orange, yellow and green segments on the lower bar indicate the fraction of residues that contain outliers for ≥ 3 , 2, 1 and 0 types of geometric quality criteria. A grey segment represents the fraction of residues that are not modelled. The numeric value for each fraction is indicated below the corresponding segment, with a dot representing fractions $\leq 5\%$. The upper red bar (where present) indicates the fraction of residues that have poor fit to the electron density. The numeric value is given above the bar.

Mol	Chain	Length	Quality of chain
1	A	165	 4% 83% 11% • 5%
1	B	165	 2% 85% 8% •• 5%

The following table lists non-polymeric compounds, carbohydrate monomers and non-standard residues in protein, DNA, RNA chains that are outliers for geometric or electron-density-fit criteria:

Mol	Type	Chain	Res	Chirality	Geometry	Clashes	Electron density
3	NAG	B	1108	-	-	-	X
5	SO4	A	1112	-	-	-	X
5	SO4	A	1113	-	-	-	X
5	SO4	B	1120	-	-	-	X
5	SO4	B	1121	-	-	-	X

2 Entry composition [i](#)

There are 7 unique types of molecules in this entry. The entry contains 3193 atoms, of which 0 are hydrogens and 0 are deuteriums.

In the tables below, the ZeroOcc column contains the number of atoms modelled with zero occupancy, the AltConf column contains the number of residues with at least one atom in alternate conformation and the Trace column contains the number of residues modelled with at most 2 atoms.

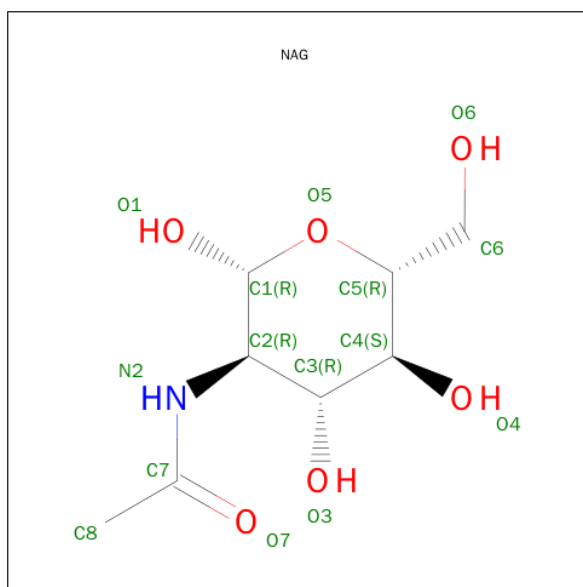
- Molecule 1 is a protein called E(rns) glycoprotein.

Mol	Chain	Residues	Atoms					ZeroOcc	AltConf	Trace
1	A	157	Total	C	N	O	S	0	10	0
			1301	806	234	241	20			
1	B	157	Total	C	N	O	S	0	10	0
			1314	811	243	240	20			

- Molecule 2 is a polymer of unknown type called SUGAR (6-MER).

Mol	Chain	Residues	Atoms				ZeroOcc	AltConf
2	A	6	Total	C	N	O	0	0
			72	40	2	30		

- Molecule 3 is SUGAR (N-ACETYL-D-GLUCOSAMINE) (three-letter code: NAG) (formula: $C_8H_{15}NO_6$).

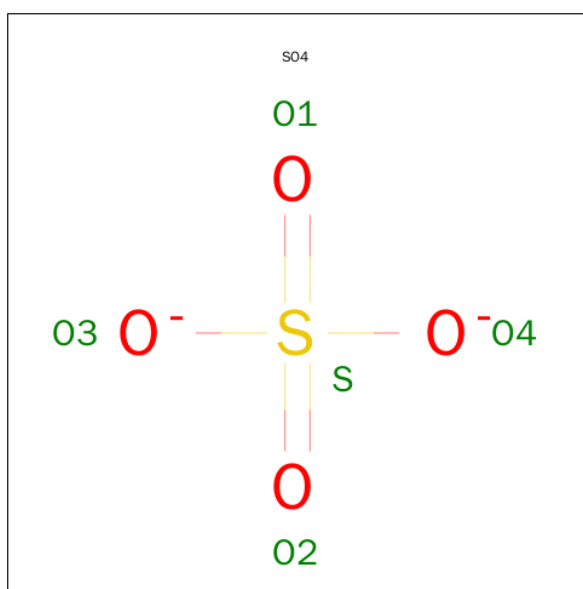


Mol	Chain	Residues	Atoms				ZeroOcc	AltConf
3	A	1	Total	C	N	O	0	0
			14	8	1	5		
3	A	1	Total	C	N	O	0	0
			14	8	1	5		
3	A	1	Total	C	N	O	0	0
			14	8	1	5		
3	B	1	Total	C	N	O	0	0
			14	8	1	5		
3	B	1	Total	C	N	O	0	0
			14	8	1	5		
3	B	1	Total	C	N	O	0	0
			14	8	1	5		

- Molecule 4 is a polymer of unknown type called SUGAR (2-MER).

Mol	Chain	Residues	Atoms				ZeroOcc	AltConf
4	A	2	Total	C	N	O	0	0
			28	16	2	10		
4	B	2	Total	C	N	O	0	0
			28	16	2	10		
4	B	2	Total	C	N	O	0	0
			28	16	2	10		

- Molecule 5 is SULFATE ION (three-letter code: SO₄) (formula: O₄S).



Mol	Chain	Residues	Atoms			ZeroOcc	AltConf
5	A	1	Total	O	S	0	0
			5	4	1		

Continued on next page...

Continued from previous page...

Mol	Chain	Residues	Atoms			ZeroOcc	AltConf
5	A	1	Total	O	S	0	0
			5	4	1		
5	A	1	Total	O	S	0	0
			5	4	1		
5	B	1	Total	O	S	0	0
			5	4	1		
5	B	1	Total	O	S	0	0
			5	4	1		
5	B	1	Total	O	S	0	0
			5	4	1		
5	B	1	Total	O	S	0	0
			5	4	1		
5	B	1	Total	O	S	0	0
			5	4	1		
5	B	1	Total	O	S	0	0
			5	4	1		

- Molecule 6 is a polymer of unknown type called SUGAR (7-MER).

Mol	Chain	Residues	Atoms				ZeroOcc	AltConf
6	B	7	Total	C	N	O	0	0
			83	46	2	35		


- Molecule 7 is water.

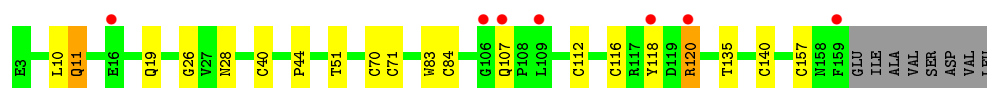
Mol	Chain	Residues	Atoms		ZeroOcc	AltConf
7	A	94	Total	O	0	0
			94	94		
7	B	111	Total	O	0	0
			111	111		

3 Residue-property plots [i](#)


These plots are drawn for all protein, RNA and DNA chains in the entry. The first graphic for a chain summarises the proportions of errors displayed in the second graphic. The second graphic shows the sequence view annotated by issues in geometry and electron density. Residues are color-coded according to the number of geometric quality criteria for which they contain at least one outlier: green = 0, yellow = 1, orange = 2 and red = 3 or more. A red dot above a residue indicates a poor fit to the electron density ($\text{RSRZ} > 2$). Stretches of 2 or more consecutive residues without any outlier are shown as a green connector. Residues present in the sample, but not in the model, are shown in grey.

- Molecule 1: E(rns) glycoprotein

Chain A: 



- Molecule 1: E(rns) glycoprotein

Chain B: 



4 Data and refinement statistics

Property	Value	Source
Space group	P 65 2 2	Depositor
Cell constants a, b, c, α , β , γ	106.04Å 106.04Å 211.85Å 90.00° 90.00° 120.00°	Depositor
Resolution (Å)	45.92 – 2.21 45.92 – 2.21	Depositor EDS
% Data completeness (in resolution range)	(Not available) (45.92-2.21) 96.7 (45.92-2.21)	Depositor EDS
R_{merge}	(Not available)	Depositor
R_{sym}	(Not available)	Depositor
$\langle I/\sigma(I) \rangle$ ¹	1.62 (at 2.20Å)	Xtriage
Refinement program	BUSTER 2.9.2	Depositor
R, R_{free}	0.209 , 0.225 0.210 , 0.220	Depositor DCC
R_{free} test set	1781 reflections (5.36%)	DCC
Wilson B-factor (Å ²)	36.5	Xtriage
Anisotropy	0.416	Xtriage
Bulk solvent k_{sol} (e/Å ³), B_{sol} (Å ²)	0.36 , 68.1	EDS
Estimated twinning fraction	No twinning to report.	Xtriage
L-test for twinning ²	$\langle L \rangle = 0.49$, $\langle L^2 \rangle = 0.32$	Xtriage
Outliers	0 of 35064 reflections	Xtriage
F_o, F_c correlation	0.94	EDS
Total number of atoms	3193	wwPDB-VP
Average B, all atoms (Å ²)	41.0	wwPDB-VP

Xtriage's analysis on translational NCS is as follows: *The largest off-origin peak in the Patterson function is 6.05% of the height of the origin peak. No significant pseudotranslation is detected.*

¹Intensities estimated from amplitudes.

²Theoretical values of $\langle |L| \rangle$, $\langle L^2 \rangle$ for acentric reflections are 0.5, 0.375 respectively for untwinned datasets, and 0.333, 0.2 for perfectly twinned datasets.

5 Model quality [i](#)

5.1 Standard geometry [i](#)

Bond lengths and bond angles in the following residue types are not validated in this section: SO4, BMA, NAG, MAN

The Z score for a bond length (or angle) is the number of standard deviations the observed value is removed from the expected value. A bond length (or angle) with $|Z| > 5$ is considered an outlier worth inspection. RMSZ is the root-mean-square of all Z scores of the bond lengths (or angles).

Mol	Chain	Bond lengths		Bond angles	
		RMSZ	# $ Z > 5$	RMSZ	# $ Z > 5$
1	A	0.56	0/1349	0.71	0/1828
1	B	0.56	0/1353	0.71	1/1832 (0.1%)
All	All	0.56	0/2702	0.71	1/3660 (0.0%)

There are no bond length outliers.

All (1) bond angle outliers are listed below:

Mol	Chain	Res	Type	Atoms	Z	Observed(°)	Ideal(°)
1	B	109	LEU	N-CA-C	-6.12	94.47	111.00

There are no chirality outliers.

There are no planarity outliers.

5.2 Too-close contacts [i](#)

In the following table, the Non-H and H(model) columns list the number of non-hydrogen atoms and hydrogen atoms in the chain respectively. The H(added) column lists the number of hydrogen atoms added and optimized by MolProbity. The Clashes column lists the number of clashes within the asymmetric unit, whereas Symm-Clashes lists symmetry related clashes.

Mol	Chain	Non-H	H(model)	H(added)	Clashes	Symm-Clashes
1	A	1301	0	1240	18	0
1	B	1314	0	1253	16	0
2	A	72	0	61	0	0
3	A	42	0	39	1	0
3	B	42	0	39	1	0
4	A	28	0	25	0	0
4	B	56	0	50	0	0
5	A	15	0	0	0	0

Continued on next page...

Continued from previous page...

Mol	Chain	Non-H	H(model)	H(added)	Clashes	Symm-Clashes
5	B	35	0	0	0	0
6	B	83	0	70	0	0
7	A	94	0	0	1	0
7	B	111	0	0	0	0
All	All	3193	0	2777	33	0

The all-atom clashscore is defined as the number of clashes found per 1000 atoms (including hydrogen atoms). The all-atom clashscore for this structure is 6.

All (33) close contacts within the same asymmetric unit are listed below, sorted by their clash magnitude.

Atom-1	Atom-2	Interatomic distance (Å)	Clash overlap (Å)
1:A:116[B]:CYS:HB2	1:A:140[B]:CYS:SG	2.13	0.89
1:B:116[B]:CYS:HB2	1:B:140[B]:CYS:SG	2.16	0.86
1:A:40[B]:CYS:HG	1:A:84[B]:CYS:HG	0.95	0.85
1:B:40[B]:CYS:HG	1:B:84[B]:CYS:HG	0.81	0.81
1:B:70[B]:CYS:SG	1:B:71[B]:CYS:HB3	2.21	0.80
1:A:116[B]:CYS:HG	1:A:140[B]:CYS:HG	1.30	0.79
1:A:70[B]:CYS:SG	1:A:71[B]:CYS:HB3	2.25	0.77
1:A:118:TYR:HE2	1:A:120:ARG:HD3	1.52	0.73
1:A:116[B]:CYS:CB	1:A:140[B]:CYS:SG	2.83	0.66
1:B:116[B]:CYS:CB	1:B:140[B]:CYS:SG	2.85	0.65
1:A:116[B]:CYS:CB	1:A:140[B]:CYS:HG	2.12	0.62
1:A:70[B]:CYS:SG	1:A:71[B]:CYS:CB	2.89	0.60
1:B:70[B]:CYS:SG	1:B:71[B]:CYS:CB	2.88	0.60
1:A:118:TYR:CE2	1:A:120:ARG:HD3	2.35	0.59
1:A:112[B]:CYS:HG	1:A:157[B]:CYS:HG	1.52	0.54
1:B:116[B]:CYS:CB	1:B:140[B]:CYS:HG	2.22	0.51
1:A:26:GLY:O	3:A:1107:NAG:H82	2.10	0.51
1:A:11:GLN:HG2	1:A:28:ASN:HA	1.93	0.51
1:B:26:GLY:O	3:B:1108:NAG:H82	2.12	0.50
1:B:112[B]:CYS:HG	1:B:157[B]:CYS:HG	1.58	0.49
1:A:70[B]:CYS:SG	1:A:71[B]:CYS:SG	3.10	0.49
1:B:70[B]:CYS:HG	1:B:71[B]:CYS:HB3	1.76	0.49
1:B:70[B]:CYS:SG	1:B:71[B]:CYS:SG	3.11	0.49
1:B:11:GLN:HG2	1:B:28:ASN:HA	1.95	0.49
1:B:109:LEU:HD12	1:B:110:ARG:H	1.78	0.48
1:A:51:THR:HG22	7:A:1285:HOH:O	2.14	0.47
1:A:44:PRO:HA	1:A:83:TRP:CD2	2.51	0.46
1:B:70[B]:CYS:HG	1:B:71[B]:CYS:CB	2.29	0.45
1:B:44:PRO:HA	1:B:83:TRP:CD2	2.52	0.45

Continued on next page...

Continued from previous page...

Atom-1	Atom-2	Interatomic distance (Å)	Clash overlap (Å)
1:A:10:LEU:O	1:A:19:GLN:HG3	2.19	0.43
1:B:70[B]:CYS:HA	1:B:71[B]:CYS:HA	1.79	0.42
1:A:135:THR:OG1	1:B:138:THR:HG23	2.19	0.42
1:A:70[B]:CYS:HA	1:A:71[B]:CYS:HA	1.82	0.42

There are no symmetry-related clashes.

5.3 Torsion angles [i](#)

5.3.1 Protein backbone [i](#)

In the following table, the Percentiles column shows the percent Ramachandran outliers of the chain as a percentile score with respect to all X-ray entries followed by that with respect to entries of similar resolution.

The Analysed column shows the number of residues for which the backbone conformation was analysed, and the total number of residues.

Mol	Chain	Analysed	Favoured	Allowed	Outliers	Percentiles	
1	A	164/165 (99%)	157 (96%)	7 (4%)	0	100	100
1	B	165/165 (100%)	158 (96%)	7 (4%)	0	100	100
All	All	329/330 (100%)	315 (96%)	14 (4%)	0	100	100

There are no Ramachandran outliers to report.

5.3.2 Protein sidechains [i](#)

In the following table, the Percentiles column shows the percent sidechain outliers of the chain as a percentile score with respect to all X-ray entries followed by that with respect to entries of similar resolution.

The Analysed column shows the number of residues for which the sidechain conformation was analysed, and the total number of residues.

Mol	Chain	Analysed	Rotameric	Outliers	Percentiles	
1	A	147/144 (102%)	144 (98%)	3 (2%)	63	75
1	B	147/144 (102%)	144 (98%)	3 (2%)	63	75
All	All	294/288 (102%)	288 (98%)	6 (2%)	60	75

All (6) residues with a non-rotameric sidechain are listed below:

Mol	Chain	Res	Type
1	A	11	GLN
1	A	107	GLN
1	A	120	ARG
1	B	11	GLN
1	B	109	LEU
1	B	110	ARG

Some sidechains can be flipped to improve hydrogen bonding and reduce clashes. All (2) such sidechains are listed below:

Mol	Chain	Res	Type
1	A	24	GLN
1	B	24	GLN

5.3.3 RNA ⓘ

There are no RNA molecules in this entry.

5.4 Non-standard residues in protein, DNA, RNA chains ⓘ

There are no non-standard protein/DNA/RNA residues in this entry.

5.5 Carbohydrates ⓘ

19 carbohydrates are modelled in this entry.

In the following table, the Counts columns list the number of bonds (or angles) for which Mogul statistics could be retrieved, the number of bonds (or angles) that are observed in the model and the number of bonds (or angles) that are defined in the chemical component dictionary. The Link column lists molecule types, if any, to which the group is linked. The Z score for a bond length (or angle) is the number of standard deviations the observed value is removed from the expected value. A bond length (or angle) with $|Z| > 2$ is considered an outlier worth inspection. RMSZ is the root-mean-square of all Z scores of the bond lengths (or angles).

Mol	Type	Chain	Res	Link	Bond lengths			Bond angles		
					Counts	RMSZ	$\# Z > 2$	Counts	RMSZ	$\# Z > 2$
2	NAG	A	1101	1,2	14,14,15	0.88	1 (7%)	15,19,21	1.86	5 (33%)
2	NAG	A	1102	2	14,14,15	0.91	1 (7%)	15,19,21	1.77	3 (20%)
2	BMA	A	1103	2	11,11,12	0.80	0	14,15,17	1.25	1 (7%)
2	MAN	A	1104	2	11,11,12	0.72	0	14,15,17	2.71	7 (50%)

Mol	Type	Chain	Res	Link	Bond lengths			Bond angles		
					Counts	RMSZ	# Z > 2	Counts	RMSZ	# Z > 2
2	BMA	A	1105	2	11,11,12	0.84	0	14,15,17	5.26	8 (57%)
2	MAN	A	1106	2	11,11,12	0.83	0	14,15,17	2.68	5 (35%)
4	NAG	A	1110	1,4	14,14,15	0.93	1 (7%)	15,19,21	1.55	3 (20%)
4	NAG	A	1111	4	14,14,15	0.98	1 (7%)	15,19,21	1.71	3 (20%)
6	NAG	B	1101	1,6	14,14,15	0.88	1 (7%)	15,19,21	2.11	6 (40%)
6	NAG	B	1102	6	14,14,15	0.79	1 (7%)	15,19,21	1.67	2 (13%)
6	BMA	B	1103	6	11,11,12	0.81	0	14,15,17	1.98	4 (28%)
6	MAN	B	1104	6	11,11,12	0.72	0	14,15,17	2.09	6 (42%)
6	BMA	B	1105	6	11,11,12	0.77	0	14,15,17	3.74	9 (64%)
6	BMA	B	1106	6	11,11,12	0.81	0	14,15,17	2.17	4 (28%)
6	MAN	B	1107	6	11,11,12	0.79	0	14,15,17	2.53	4 (28%)
4	NAG	B	1110	1,4	14,14,15	1.03	1 (7%)	15,19,21	2.84	5 (33%)
4	NAG	B	1111	4	14,14,15	1.04	1 (7%)	15,19,21	2.80	5 (33%)
4	NAG	B	1112	1,4	14,14,15	0.92	1 (7%)	15,19,21	1.11	1 (6%)
4	NAG	B	1113	4	14,14,15	0.93	1 (7%)	15,19,21	1.72	3 (20%)

In the following table, the Chirals column lists the number of chiral outliers, the number of chiral centers analysed, the number of these observed in the model and the number defined in the chemical component dictionary. Similar counts are reported in the Torsion and Rings columns. '-' means no outliers of that kind were identified.

Mol	Type	Chain	Res	Link	Chirals	Torsions	Rings
2	NAG	A	1101	1,2	-	0/6/23/26	0/1/1/1
2	NAG	A	1102	2	-	0/6/23/26	0/1/1/1
2	BMA	A	1103	2	-	0/2/19/22	0/1/1/1
2	MAN	A	1104	2	-	0/2/19/22	0/1/1/1
2	BMA	A	1105	2	-	0/2/19/22	1/1/1/1
2	MAN	A	1106	2	-	0/2/19/22	0/1/1/1
4	NAG	A	1110	1,4	-	0/6/23/26	0/1/1/1
4	NAG	A	1111	4	-	0/6/23/26	0/1/1/1
6	NAG	B	1101	1,6	-	0/6/23/26	0/1/1/1
6	NAG	B	1102	6	-	0/6/23/26	0/1/1/1
6	BMA	B	1103	6	-	0/2/19/22	0/1/1/1
6	MAN	B	1104	6	-	0/2/19/22	1/1/1/1
6	BMA	B	1105	6	-	0/2/19/22	1/1/1/1
6	BMA	B	1106	6	-	0/2/19/22	0/1/1/1
6	MAN	B	1107	6	-	0/2/19/22	0/1/1/1
4	NAG	B	1110	1,4	-	0/6/23/26	0/1/1/1
4	NAG	B	1111	4	-	0/6/23/26	0/1/1/1

Continued on next page...

Continued from previous page...

Mol	Type	Chain	Res	Link	Chirals	Torsions	Rings
4	NAG	B	1112	1,4	-	0/6/23/26	0/1/1/1
4	NAG	B	1113	4	-	0/6/23/26	0/1/1/1

All (10) bond length outliers are listed below:

Mol	Chain	Res	Type	Atoms	Z	Observed(Å)	Ideal(Å)
6	B	1102	NAG	C1-C2	2.06	1.55	1.52
2	A	1101	NAG	C1-C2	2.12	1.55	1.52
6	B	1101	NAG	C1-C2	2.28	1.55	1.52
4	A	1110	NAG	C1-C2	2.28	1.55	1.52
4	B	1112	NAG	C1-C2	2.31	1.55	1.52
4	B	1113	NAG	C1-C2	2.47	1.55	1.52
2	A	1102	NAG	C1-C2	2.51	1.55	1.52
4	B	1111	NAG	C1-C2	2.55	1.56	1.52
4	A	1111	NAG	C1-C2	2.60	1.56	1.52
4	B	1110	NAG	C1-C2	2.82	1.56	1.52

All (84) bond angle outliers are listed below:

Mol	Chain	Res	Type	Atoms	Z	Observed(°)	Ideal(°)
2	A	1105	BMA	O5-C1-C2	-10.86	93.24	110.86
2	A	1105	BMA	C3-C4-C5	-8.50	95.38	110.20
6	B	1105	BMA	C3-C4-C5	-6.77	98.39	110.20
6	B	1105	BMA	O5-C1-C2	-5.45	102.01	110.86
4	B	1110	NAG	C2-N2-C7	-4.34	117.46	123.04
6	B	1101	NAG	C8-C7-N2	-4.10	108.27	116.11
2	A	1102	NAG	C6-C5-C4	-4.01	103.11	113.02
6	B	1102	NAG	O4-C4-C5	-3.97	98.73	109.24
2	A	1102	NAG	O4-C4-C5	-3.70	99.43	109.24
6	B	1102	NAG	C6-C5-C4	-3.70	103.89	113.02
2	A	1101	NAG	C8-C7-N2	-3.59	109.24	116.11
6	B	1103	BMA	O6-C6-C5	-3.59	99.48	111.33
2	A	1106	MAN	O2-C2-C3	-3.50	103.07	110.12
6	B	1103	BMA	C1-C2-C3	-3.49	105.41	109.54
6	B	1104	MAN	O6-C6-C5	-3.37	100.20	111.33
4	B	1111	NAG	C2-N2-C7	-3.36	118.72	123.04
6	B	1101	NAG	O6-C6-C5	-3.33	100.32	111.33
4	B	1110	NAG	C4-C3-C2	-3.31	106.08	111.23
2	A	1104	MAN	O4-C4-C3	-3.15	103.26	110.34
2	A	1101	NAG	O6-C6-C5	-2.96	101.53	111.33
6	B	1107	MAN	O2-C2-C3	-2.91	104.27	110.12
6	B	1103	BMA	C1-O5-C5	-2.80	108.70	112.25

Continued on next page...

Continued from previous page...

Mol	Chain	Res	Type	Atoms	Z	Observed(°)	Ideal(°)
2	A	1101	NAG	O4-C4-C3	-2.77	104.09	110.34
2	A	1103	BMA	O6-C6-C5	-2.66	102.54	111.33
6	B	1101	NAG	O4-C4-C3	-2.65	104.38	110.34
4	B	1113	NAG	O3-C3-C2	-2.58	104.00	109.11
4	B	1111	NAG	O4-C4-C3	-2.50	104.71	110.34
4	A	1110	NAG	O3-C3-C2	-2.43	104.31	109.11
4	A	1111	NAG	O3-C3-C2	-2.42	104.31	109.11
2	A	1102	NAG	O6-C6-C5	-2.33	103.65	111.33
4	B	1110	NAG	O3-C3-C2	-2.31	104.53	109.11
4	A	1110	NAG	C8-C7-N2	-2.30	111.70	116.11
6	B	1104	MAN	O4-C4-C3	-2.27	105.24	110.34
6	B	1101	NAG	O3-C3-C4	-2.26	105.25	110.34
2	A	1106	MAN	C1-C2-C3	-2.19	106.95	109.54
6	B	1104	MAN	C2-C3-C4	-2.11	107.46	111.04
2	A	1104	MAN	C2-C3-C4	-2.11	107.46	111.04
2	A	1101	NAG	O5-C5-C6	-2.00	103.02	107.35
2	A	1104	MAN	O3-C3-C4	2.02	114.90	110.34
6	B	1106	BMA	C1-C2-C3	2.05	111.96	109.54
4	B	1112	NAG	C1-O5-C5	2.19	115.03	112.25
2	A	1104	MAN	O3-C3-C2	2.36	114.26	110.00
2	A	1101	NAG	O7-C7-C8	2.39	126.44	122.06
6	B	1101	NAG	O7-C7-C8	2.41	126.48	122.06
2	A	1105	BMA	O4-C4-C5	2.51	115.89	109.24
4	A	1111	NAG	C3-C4-C5	2.73	114.95	110.20
4	B	1110	NAG	C6-C5-C4	2.73	119.75	113.02
6	B	1101	NAG	C1-O5-C5	2.74	115.73	112.25
6	B	1105	BMA	O5-C5-C6	2.75	113.30	107.35
4	B	1113	NAG	C3-C4-C5	2.93	115.31	110.20
6	B	1104	MAN	O2-C2-C1	2.98	115.18	109.21
2	A	1105	BMA	C6-C5-C4	2.99	120.39	113.02
6	B	1105	BMA	C6-C5-C4	3.13	120.75	113.02
6	B	1105	BMA	O2-C2-C3	3.17	116.49	110.12
6	B	1106	BMA	C2-C3-C4	3.20	116.48	111.04
6	B	1107	MAN	O2-C2-C1	3.41	116.05	109.21
2	A	1104	MAN	O5-C1-C2	3.49	116.51	110.86
6	B	1104	MAN	O2-C2-C3	3.49	117.14	110.12
6	B	1107	MAN	O5-C1-C2	3.49	116.53	110.86
6	B	1103	BMA	O2-C2-C1	3.58	116.39	109.21
4	A	1110	NAG	C1-O5-C5	3.64	116.86	112.25
2	A	1106	MAN	O5-C1-C2	3.70	116.86	110.86
6	B	1105	BMA	O2-C2-C1	3.84	116.89	109.21
4	B	1111	NAG	C3-C4-C5	3.89	116.97	110.20

Continued on next page...

Continued from previous page...

Mol	Chain	Res	Type	Atoms	Z	Observed(°)	Ideal(°)
6	B	1104	MAN	O5-C1-C2	3.95	117.26	110.86
6	B	1105	BMA	C1-C2-C3	3.95	114.22	109.54
2	A	1106	MAN	O2-C2-C1	4.10	117.42	109.21
6	B	1106	BMA	C1-O5-C5	4.18	117.55	112.25
4	B	1113	NAG	C4-C3-C2	4.28	117.88	111.23
4	B	1111	NAG	O3-C3-C2	4.33	117.70	109.11
4	A	1111	NAG	C4-C3-C2	4.45	118.14	111.23
2	A	1104	MAN	O2-C2-C1	4.53	118.28	109.21
6	B	1106	BMA	O5-C1-C2	4.78	118.60	110.86
2	A	1105	BMA	O2-C2-C1	4.84	118.91	109.21
6	B	1105	BMA	O3-C3-C2	5.11	119.23	110.00
6	B	1105	BMA	C1-O5-C5	5.58	119.33	112.25
2	A	1104	MAN	C1-O5-C5	5.72	119.50	112.25
2	A	1105	BMA	O3-C3-C2	5.81	120.50	110.00
6	B	1107	MAN	C1-O5-C5	6.48	120.47	112.25
2	A	1106	MAN	C1-O5-C5	6.59	120.61	112.25
4	B	1111	NAG	C3-C2-N2	6.93	127.16	110.56
2	A	1105	BMA	C1-C2-C3	7.68	118.63	109.54
2	A	1105	BMA	C1-O5-C5	7.77	122.11	112.25
4	B	1110	NAG	O4-C4-C5	8.22	131.01	109.24

There are no chirality outliers.

There are no torsion outliers.

All (3) ring outliers are listed below:

Mol	Chain	Res	Type	Atoms
6	B	1104	MAN	C1-C2-C3-C4-C5-O5
6	B	1105	BMA	C1-C2-C3-C4-C5-O5
2	A	1105	BMA	C1-C2-C3-C4-C5-O5

No monomer is involved in short contacts.

5.6 Ligand geometry

16 ligands are modelled in this entry.

In the following table, the Counts columns list the number of bonds (or angles) for which Mogul statistics could be retrieved, the number of bonds (or angles) that are observed in the model and the number of bonds (or angles) that are defined in the chemical component dictionary. The Link column lists molecule types, if any, to which the group is linked. The Z score for a bond length (or angle) is the number of standard deviations the observed value is removed from the expected

value. A bond length (or angle) with $|Z| > 2$ is considered an outlier worth inspection. RMSZ is the root-mean-square of all Z scores of the bond lengths (or angles).

Mol	Type	Chain	Res	Link	Bond lengths			Bond angles		
					Counts	RMSZ	$\# Z > 2$	Counts	RMSZ	$\# Z > 2$
3	NAG	A	1107	1	14,14,15	0.94	1 (7%)	15,19,21	0.98	1 (6%)
3	NAG	A	1108	1	14,14,15	0.98	1 (7%)	15,19,21	1.45	4 (26%)
3	NAG	A	1109	1	14,14,15	1.10	1 (7%)	15,19,21	2.33	6 (40%)
5	SO4	A	1112	-	4,4,4	0.85	0	6,6,6	0.27	0
5	SO4	A	1113	-	4,4,4	0.37	0	6,6,6	0.31	0
5	SO4	A	1114	-	4,4,4	0.26	0	6,6,6	0.15	0
3	NAG	B	1108	1	14,14,15	0.92	1 (7%)	15,19,21	0.86	1 (6%)
3	NAG	B	1109	1	14,14,15	0.96	1 (7%)	15,19,21	1.66	4 (26%)
3	NAG	B	1114	1	14,14,15	0.92	1 (7%)	15,19,21	0.87	0
5	SO4	B	1115	-	4,4,4	0.46	0	6,6,6	0.67	0
5	SO4	B	1116	-	4,4,4	1.54	1 (25%)	6,6,6	0.72	0
5	SO4	B	1117	-	4,4,4	0.30	0	6,6,6	0.23	0
5	SO4	B	1118	-	4,4,4	0.31	0	6,6,6	0.20	0
5	SO4	B	1119	-	4,4,4	0.72	0	6,6,6	0.28	0
5	SO4	B	1120	-	4,4,4	0.89	0	6,6,6	0.41	0
5	SO4	B	1121	-	4,4,4	0.59	0	6,6,6	0.28	0

In the following table, the Chirals column lists the number of chiral outliers, the number of chiral centers analysed, the number of these observed in the model and the number defined in the chemical component dictionary. Similar counts are reported in the Torsion and Rings columns. '-' means no outliers of that kind were identified.

Mol	Type	Chain	Res	Link	Chirals	Torsions	Rings
3	NAG	A	1107	1	-	0/6/23/26	0/1/1/1
3	NAG	A	1108	1	-	0/6/23/26	0/1/1/1
3	NAG	A	1109	1	-	0/6/23/26	0/1/1/1
5	SO4	A	1112	-	-	0/0/0/0	0/0/0/0
5	SO4	A	1113	-	-	0/0/0/0	0/0/0/0
5	SO4	A	1114	-	-	0/0/0/0	0/0/0/0
3	NAG	B	1108	1	-	0/6/23/26	0/1/1/1
3	NAG	B	1109	1	-	0/6/23/26	0/1/1/1
3	NAG	B	1114	1	-	0/6/23/26	0/1/1/1
5	SO4	B	1115	-	-	0/0/0/0	0/0/0/0
5	SO4	B	1116	-	-	0/0/0/0	0/0/0/0
5	SO4	B	1117	-	-	0/0/0/0	0/0/0/0
5	SO4	B	1118	-	-	0/0/0/0	0/0/0/0
5	SO4	B	1119	-	-	0/0/0/0	0/0/0/0
5	SO4	B	1120	-	-	0/0/0/0	0/0/0/0

Continued on next page...

Continued from previous page...

Mol	Type	Chain	Res	Link	Chirals	Torsions	Rings
5	SO4	B	1121	-	-	0/0/0/0	0/0/0/0

All (7) bond length outliers are listed below:

Mol	Chain	Res	Type	Atoms	Z	Observed(Å)	Ideal(Å)
5	B	1116	SO4	O1-S	-2.34	1.39	1.47
3	B	1109	NAG	C1-C2	2.26	1.55	1.52
3	B	1114	NAG	C1-C2	2.38	1.55	1.52
3	B	1108	NAG	C1-C2	2.40	1.55	1.52
3	A	1107	NAG	C1-C2	2.47	1.55	1.52
3	A	1108	NAG	C1-C2	2.58	1.56	1.52
3	A	1109	NAG	C1-C2	2.88	1.56	1.52

All (16) bond angle outliers are listed below:

Mol	Chain	Res	Type	Atoms	Z	Observed(°)	Ideal(°)
3	A	1109	NAG	C2-N2-C7	-5.81	115.57	123.04
3	A	1109	NAG	O4-C4-C3	-3.45	102.57	110.34
3	A	1109	NAG	C1-O5-C5	-2.99	108.45	112.25
3	B	1109	NAG	O4-C4-C3	-2.66	104.35	110.34
3	A	1108	NAG	O4-C4-C3	-2.26	105.25	110.34
3	A	1109	NAG	O7-C7-C8	2.02	125.77	122.06
3	A	1108	NAG	C1-O5-C5	2.13	114.95	112.25
3	A	1108	NAG	C3-C2-N2	2.19	115.80	110.56
3	B	1109	NAG	O6-C6-C5	2.19	118.57	111.33
3	B	1108	NAG	C1-O5-C5	2.42	115.32	112.25
3	A	1107	NAG	C1-O5-C5	2.73	115.71	112.25
3	A	1108	NAG	C3-C4-C5	2.74	114.98	110.20
3	A	1109	NAG	C6-C5-C4	2.85	120.04	113.02
3	A	1109	NAG	O4-C4-C5	2.91	116.94	109.24
3	B	1109	NAG	C3-C4-C5	2.91	115.28	110.20
3	B	1109	NAG	C3-C2-N2	3.02	117.80	110.56

There are no chirality outliers.

There are no torsion outliers.

There are no ring outliers.

2 monomers are involved in 2 short contacts:

Mol	Chain	Res	Type	Clashes	Symm-Clashes
3	A	1107	NAG	1	0
3	B	1108	NAG	1	0

5.7 Other polymers

There are no such residues in this entry.

5.8 Polymer linkage issues

There are no chain breaks in this entry.

6 Fit of model and data [i](#)

6.1 Protein, DNA and RNA chains [i](#)

In the following table, the column labelled ‘#RSRZ> 2’ contains the number (and percentage) of RSRZ outliers, followed by percent RSRZ outliers for the chain as percentile scores relative to all X-ray entries and entries of similar resolution. The OWAB column contains the minimum, median, 95th percentile and maximum values of the occupancy-weighted average B-factor per residue. The column labelled ‘Q< 0.9’ lists the number of (and percentage) of residues with an average occupancy less than 0.9.

Mol	Chain	Analysed	<RSRZ>	#RSRZ>2	OWAB(Å ²)	Q<0.9
1	A	157/165 (95%)	0.08	7 (4%) 37 36	25, 38, 66, 79	0
1	B	157/165 (95%)	-0.07	4 (2%) 61 60	23, 32, 65, 86	0
All	All	314/330 (95%)	0.01	11 (3%) 48 46	23, 35, 66, 86	0

All (11) RSRZ outliers are listed below:

Mol	Chain	Res	Type	RSRZ
1	B	109	LEU	6.6
1	B	108	PRO	3.7
1	A	106	GLY	3.4
1	A	120	ARG	2.9
1	A	109	LEU	2.9
1	A	107	GLN	2.9
1	B	120[A]	ARG	2.5
1	A	16[A]	GLU	2.4
1	B	107	GLN	2.3
1	A	159	PHE	2.3
1	A	118	TYR	2.1

6.2 Non-standard residues in protein, DNA, RNA chains [i](#)

There are no non-standard protein/DNA/RNA residues in this entry.

6.3 Carbohydrates [i](#)

In the following table, the Atoms column lists the number of modelled atoms in the group and the number defined in the chemical component dictionary. LLDF column lists the quality of electron density of the group with respect to its neighbouring residues in protein, DNA or RNA chains. The B-factors column lists the minimum, median, 95th percentile and maximum values of B factors

of atoms in the group. The column labelled 'Q< 0.9' lists the number of atoms with occupancy less than 0.9.

Mol	Type	Chain	Res	Atoms	RSCC	RSR	LLDF	B-factors(Å ²)	Q<0.9
2	NAG	A	1101	14/15	0.94	0.14	1.75	30,33,36,39	14
4	NAG	B	1110	14/15	0.90	0.14	1.45	47,51,54,57	0
6	NAG	B	1101	14/15	0.96	0.11	-0.13	33,36,39,41	0
4	NAG	B	1112	14/15	0.89	0.13	-0.57	51,54,57,58	14
2	NAG	A	1102	14/15	0.98	0.11	-	34,37,40,42	0
4	NAG	B	1111	14/15	0.82	0.23	-	65,69,72,73	0
6	MAN	B	1104	11/12	0.71	0.26	-	59,62,64,64	11
4	NAG	A	1111	14/15	0.77	0.18	-	60,64,66,67	14
6	BMA	B	1105	11/12	0.79	0.18	-	54,58,60,65	0
6	BMA	B	1103	11/12	0.94	0.14	-	45,48,51,56	0
6	MAN	B	1107	11/12	0.85	0.24	-	64,67,69,70	11
2	BMA	A	1103	11/12	0.97	0.10	-	42,45,48,53	0
6	BMA	B	1106	11/12	0.83	0.26	-	67,70,72,72	11
2	MAN	A	1104	11/12	0.76	0.22	-	60,65,67,67	11
6	NAG	B	1102	14/15	0.96	0.12	-	37,40,43,44	0
2	BMA	A	1105	11/12	0.87	0.15	-	53,56,59,64	0
2	MAN	A	1106	11/12	0.84	0.24	-	73,77,79,80	0
4	NAG	B	1113	14/15	0.77	0.24	-	61,65,68,68	14
4	NAG	A	1110	14/15	0.80	0.16	-	51,55,58,58	14

6.4 Ligands ⓘ

In the following table, the Atoms column lists the number of modelled atoms in the group and the number defined in the chemical component dictionary. LLDF column lists the quality of electron density of the group with respect to its neighbouring residues in protein, DNA or RNA chains. The B-factors column lists the minimum, median, 95th percentile and maximum values of B factors of atoms in the group. The column labelled 'Q< 0.9' lists the number of atoms with occupancy less than 0.9.

Mol	Type	Chain	Res	Atoms	RSCC	RSR	LLDF	B-factors(Å ²)	Q<0.9
5	SO4	B	1121	5/5	0.87	0.33	13.14	84,87,89,92	0
5	SO4	A	1112	5/5	0.97	0.18	5.19	49,52,54,57	0
5	SO4	B	1120	5/5	0.98	0.24	5.13	24,26,30,31	5
5	SO4	A	1113	5/5	0.95	0.20	2.15	50,53,56,56	5
3	NAG	B	1108	14/15	0.77	0.17	2.10	65,69,72,72	14
3	NAG	A	1109	14/15	0.80	0.17	1.84	47,50,53,54	0
5	SO4	B	1115	5/5	0.99	0.14	1.42	33,33,38,38	0
5	SO4	B	1116	5/5	1.00	0.15	0.93	27,30,31,33	5
5	SO4	B	1117	5/5	0.91	0.21	0.29	74,79,79,80	5
3	NAG	A	1107	14/15	0.88	0.14	0.28	68,72,75,75	14

Continued on next page...

Continued from previous page...

Mol	Type	Chain	Res	Atoms	RSCC	RSR	LLDF	B-factors(\AA^2)	Q<0.9
5	SO4	A	1114	5/5	0.93	0.12	-	101,106,107,107	0
3	NAG	B	1109	14/15	0.66	0.21	-	49,53,56,57	14
3	NAG	A	1108	14/15	0.66	0.32	-	79,83,86,86	14
5	SO4	B	1118	5/5	0.95	0.20	-	59,62,65,65	5
3	NAG	B	1114	14/15	0.91	0.23	-	63,67,69,69	14
5	SO4	B	1119	5/5	0.96	0.23	-	57,59,62,63	5

6.5 Other polymers [i](#)

There are no such residues in this entry.