



# Full wwPDB X-ray Structure Validation Report ⓘ

Feb 1, 2016 – 03:56 PM GMT

PDB ID : 4DW5  
Title : Crystal structure of the glycoprotein Erns from the pestivirus BVDV-1 in complex with a non-cleavable CpU dinucleotide  
Authors : Krey, T.; Bontems, F.; Vonnrhein, C.; Vaney, M.-C.; Bricogne, G.; Ruemenapf, T.; Rey, F.A.  
Deposited on : 2012-02-24  
Resolution : 2.21 Å(reported)

This is a Full wwPDB X-ray Structure Validation Report for a publicly released PDB entry.  
We welcome your comments at [validation@mail.wwpdb.org](mailto:validation@mail.wwpdb.org)  
A user guide is available at  
<http://wwpdb.org/validation/2016/XrayValidationReportHelp>  
with specific help available everywhere you see the ⓘ symbol.

---

The following versions of software and data (see [references ⓘ](#)) were used in the production of this report:

MolProbity : 4.02b-467  
Mogul : 1.7 (RC4), CSD as536be (2015)  
Xtriage (Phenix) : 1.9-1692  
EDS : rb-20026688  
Percentile statistics : 20151230.v01 (using entries in the PDB archive December 30th 2015)  
Refmac : 5.8.0135  
CCP4 : 6.5.0  
Ideal geometry (proteins) : Engh & Huber (2001)  
Ideal geometry (DNA, RNA) : Parkinson et al. (1996)  
Validation Pipeline (wwPDB-VP) : trunk26865

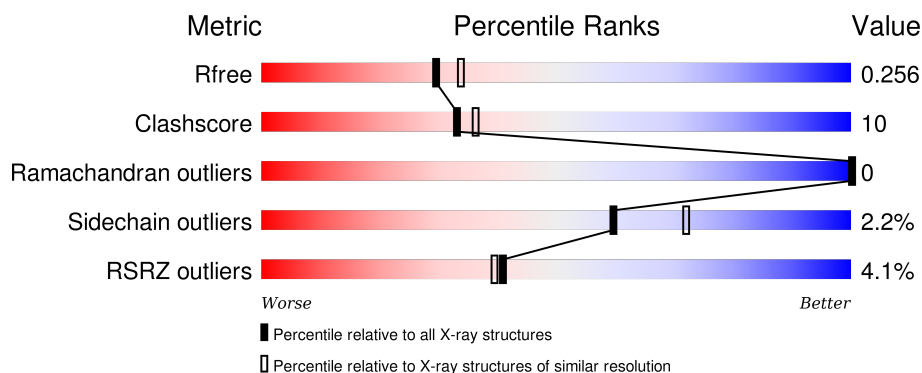
# 1 Overall quality at a glance

The following experimental techniques were used to determine the structure:

## *X-RAY DIFFRACTION*

The reported resolution of this entry is 2.21 Å.

Percentile scores (ranging between 0-100) for global validation metrics of the entry are shown in the following graphic. The table shows the number of entries on which the scores are based.



Metric	Whole archive (#Entries)	Similar resolution (#Entries, resolution range(Å))
$R_{free}$	91344	4405 (2.24-2.20)
Clashscore	102246	5146 (2.24-2.20)
Ramachandran outliers	100387	5065 (2.24-2.20)
Sidechain outliers	100360	5066 (2.24-2.20)
RSRZ outliers	91569	4414 (2.24-2.20)

The table below summarises the geometric issues observed across the polymeric chains and their fit to the electron density. The red, orange, yellow and green segments on the lower bar indicate the fraction of residues that contain outliers for  $\geq 3$ , 2, 1 and 0 types of geometric quality criteria. A grey segment represents the fraction of residues that are not modelled. The numeric value for each fraction is indicated below the corresponding segment, with a dot representing fractions  $\leq 5\%$ . The upper red bar (where present) indicates the fraction of residues that have poor fit to the electron density. The numeric value is given above the bar.

Mol	Chain	Length	Quality of chain
1	A	167	<div> <div>3%</div> <div>82%</div> <div>13%</div> <div>5%</div> </div>
1	B	167	<div> <div>5%</div> <div>82%</div> <div>13%</div> <div>• •</div> </div>

The following table lists non-polymeric compounds, carbohydrate monomers and non-standard residues in protein, DNA, RNA chains that are outliers for geometric or electron-density-fit criteria:

Mol	Type	Chain	Res	Chirality	Geometry	Clashes	Electron density
10	U	B	1116	-	X	-	-
5	SO4	A	1114	-	-	-	X
5	SO4	A	1115	-	-	-	X
5	SO4	A	1116	-	-	-	X
5	SO4	B	1114	-	-	-	X
8	1PE	A	1119	-	-	X	X

## 2 Entry composition

There are 11 unique types of molecules in this entry. The entry contains 3234 atoms, of which 0 are hydrogens and 0 are deuteriums.

In the tables below, the ZeroOcc column contains the number of atoms modelled with zero occupancy, the AltConf column contains the number of residues with at least one atom in alternate conformation and the Trace column contains the number of residues modelled with at most 2 atoms.

- Molecule 1 is a protein called E(rns) glycoprotein.

Mol	Chain	Residues	Atoms					ZeroOcc	AltConf	Trace
1	A	158	Total	C	N	O	S	0	9	0
			1291	804	230	237	20			
1	B	160	Total	C	N	O	S	1	9	0
			1306	812	233	241	20			

There are 4 discrepancies between the modelled and reference sequences:

Chain	Residue	Modelled	Actual	Comment	Reference
A	1	ARG	-	EXPRESSION TAG	UNP Q96662
A	2	SER	-	EXPRESSION TAG	UNP Q96662
B	1	ARG	-	EXPRESSION TAG	UNP Q96662
B	2	SER	-	EXPRESSION TAG	UNP Q96662

- Molecule 2 is a polymer of unknown type called SUGAR (6-MER).

Mol	Chain	Residues	Atoms				ZeroOcc	AltConf
2	A	6	Total	C	N	O	0	0
			72	40	2	30		

- Molecule 3 is SUGAR (N-ACETYL-D-GLUCOSAMINE) (three-letter code: NAG) (formula: C<sub>8</sub>H<sub>15</sub>NO<sub>6</sub>).



Mol	Chain	Residues	Atoms				ZeroOcc	AltConf
3	A	1	Total	C	N	O	0	0
			14	8	1	5		
3	A	1	Total	C	N	O	0	0
			14	8	1	5		
3	A	1	Total	C	N	O	0	0
			14	8	1	5		
3	B	1	Total	C	N	O	0	0
			14	8	1	5		
3	B	1	Total	C	N	O	0	0
			14	8	1	5		
3	B	1	Total	C	N	O	0	0
			14	8	1	5		

- Molecule 4 is a polymer of unknown type called SUGAR (2-MER).

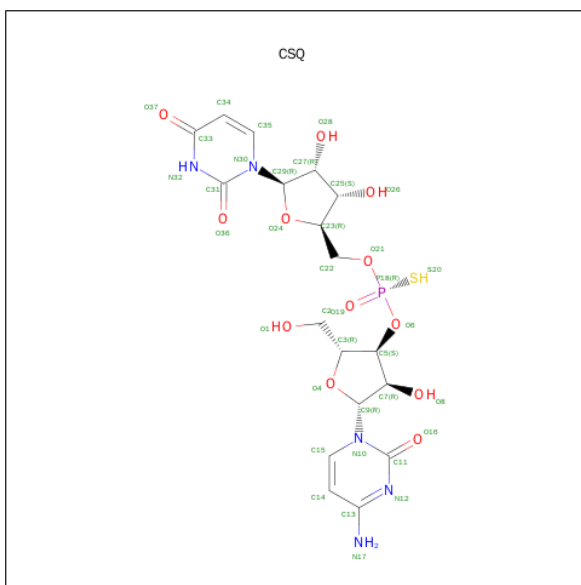
Mol	Chain	Residues	Atoms				ZeroOcc	AltConf
4	A	2	Total	C	N	O	0	0
			28	16	2	10		
4	A	2	Total	C	N	O	0	0
			28	16	2	10		
4	B	2	Total	C	N	O	1	0
			28	16	2	10		

- Molecule 5 is SULFATE ION (three-letter code: SO4) (formula: O<sub>4</sub>S).



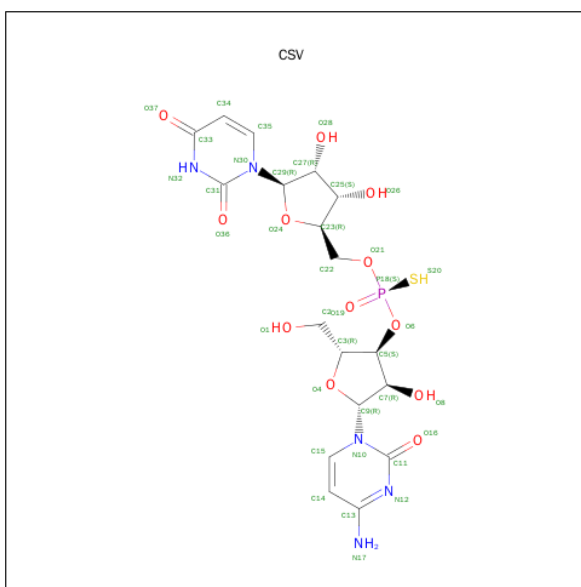
Mol	Chain	Residues	Atoms			ZeroOcc	AltConf
5	A	1	Total	O	S	0	0
			5	4	1		
5	A	1	Total	O	S	0	0
			5	4	1		
5	A	1	Total	O	S	0	0
			5	4	1		
5	B	1	Total	O	S	0	0
			5	4	1		
5	B	1	Total	O	S	0	0
			5	4	1		
5	B	1	Total	O	S	0	0
			5	4	1		

- Molecule 6 is O-[(2R,3S,4R,5R)-5-(4-AMINO-2-OXOPYRIMIDIN-1(2H)-YL)-4-HYDROXY-2-(HYDROXYMETHYL)TETRAHYDROFURAN-3-YL] O-{[(2R,3S,4R,5R)-5-(2,4-DIOXO-3,4-DIHYDROPYRIMIDIN-1(2H)-YL)-3,4-DIHYDROXYTETRAHYDROFURAN-2-YL]METHYL} HYDROGEN (R)-PHOSPHOROTHIOATE (three-letter code: CSQ) (formula: C<sub>18</sub>H<sub>24</sub>N<sub>5</sub>O<sub>12</sub>PS).



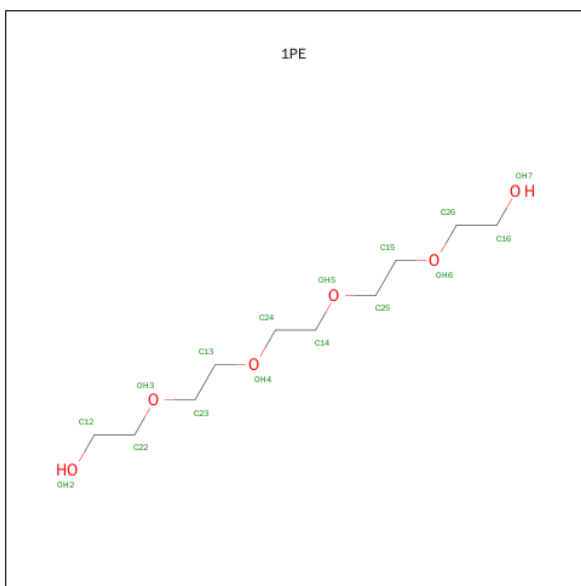
Mol	Chain	Residues	Atoms						ZeroOcc	AltConf
6	A	1	Total	C	N	O	P	S	0	1
			37	18	5	12	1	1		

- Molecule 7 is O-[(2R,3S,4R,5R)-5-(4-AMINO-2-OXOPYRIMIDIN-1(2H)-YL)-4-HYDROXY-2-(HYDROXYMETHYL)TETRAHYDROFURAN-3-YL] O-{[(2R,3S,4R,5R)-5-(2,4-DIOXO-3,4-DIHYDROPYRIMIDIN-1(2H)-YL)-3,4-DIHYDROXYTETRAHYDROFURAN-2-YL]METHYL} HYDROGEN (S)-PHOSPHOROTHIOATE (three-letter code: CSV) (formula: C<sub>18</sub>H<sub>24</sub>N<sub>5</sub>O<sub>12</sub>PS).



Mol	Chain	Residues	Atoms						ZeroOcc	AltConf
7	A	1	Total	C	N	O	P	S	0	1
			37	18	5	12	1	1		

- Molecule 8 is PENTAETHYLENE GLYCOL (three-letter code: 1PE) (formula:  $C_{10}H_{22}O_6$ ).

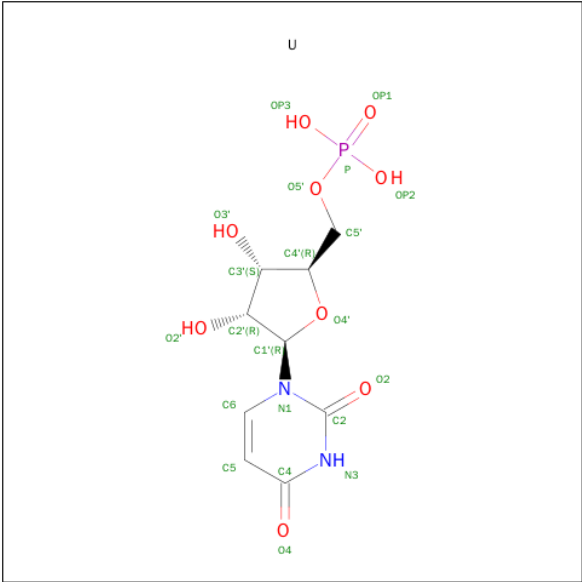


Mol	Chain	Residues	Atoms			ZeroOcc	AltConf
8	A	1	Total	C	O	1	0
			16	10	6		

- Molecule 9 is a polymer of unknown type called SUGAR (7-MER).

Mol	Chain	Residues	Atoms				ZeroOcc	AltConf
9	B	7	Total	C	N	O	0	0
			83	46	2	35		

- Molecule 10 is URIDINE-5'-MONOPHOSPHATE (three-letter code: U) (formula:  $C_9H_{13}N_2O_9P$ ).



Mol	Chain	Residues	Atoms				ZeroOcc	AltConf
10	B	1	Total	C	N	O	0	0
			9	5	2	2		

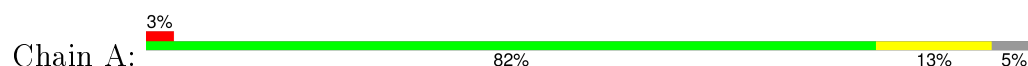
- Molecule 11 is water.

Mol	Chain	Residues	Atoms		ZeroOcc	AltConf
11	A	101	Total	O	0	0
			101	101		
11	B	79	Total	O	0	0
			79	79		

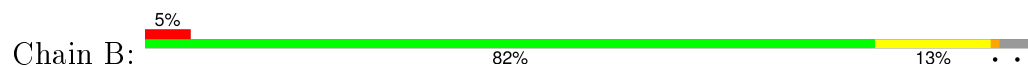
### 3 Residue-property plots [i](#)

These plots are drawn for all protein, RNA and DNA chains in the entry. The first graphic for a chain summarises the proportions of errors displayed in the second graphic. The second graphic shows the sequence view annotated by issues in geometry and electron density. Residues are color-coded according to the number of geometric quality criteria for which they contain at least one outlier: green = 0, yellow = 1, orange = 2 and red = 3 or more. A red dot above a residue indicates a poor fit to the electron density ( $RSRZ > 2$ ). Stretches of 2 or more consecutive residues without any outlier are shown as a green connector. Residues present in the sample, but not in the model, are shown in grey.

- Molecule 1: E(rns) glycoprotein



- Molecule 1: E(rns) glycoprotein



## 4 Data and refinement statistics

Property	Value	Source
Space group	P 65 2 2	Depositor
Cell constants a, b, c, $\alpha$ , $\beta$ , $\gamma$	105.34Å 105.34Å 211.26Å 90.00° 90.00° 120.00°	Depositor
Resolution (Å)	47.14 – 2.21 47.14 – 2.21	Depositor EDS
% Data completeness (in resolution range)	93.8 (47.14-2.21) 94.3 (47.14-2.21)	Depositor EDS
$R_{merge}$	(Not available)	Depositor
$R_{sym}$	(Not available)	Depositor
$\langle I/\sigma(I) \rangle$ <sup>1</sup>	1.46 (at 2.22Å)	Xtriage
Refinement program	BUSTER 2.9.2	Depositor
R, $R_{free}$	0.216 , 0.248 0.224 , 0.256	Depositor DCC
$R_{free}$ test set	1672 reflections (5.28%)	DCC
Wilson B-factor (Å <sup>2</sup> )	40.2	Xtriage
Anisotropy	0.461	Xtriage
Bulk solvent $k_{sol}$ (e/Å <sup>3</sup> ), $B_{sol}$ (Å <sup>2</sup> )	0.36 , 60.7	EDS
Estimated twinning fraction	No twinning to report.	Xtriage
L-test for twinning <sup>2</sup>	$\langle  L  \rangle = 0.49$ , $\langle L^2 \rangle = 0.33$	Xtriage
Outliers	0 of 33314 reflections	Xtriage
$F_o, F_c$ correlation	0.94	EDS
Total number of atoms	3234	wwPDB-VP
Average B, all atoms (Å <sup>2</sup> )	48.0	wwPDB-VP

Xtriage's analysis on translational NCS is as follows: *The largest off-origin peak in the Patterson function is 8.61% of the height of the origin peak. No significant pseudotranslation is detected.*

<sup>1</sup>Intensities estimated from amplitudes.

<sup>2</sup>Theoretical values of  $\langle |L| \rangle$ ,  $\langle L^2 \rangle$  for acentric reflections are 0.5, 0.375 respectively for untwinned datasets, and 0.333, 0.2 for perfectly twinned datasets.

## 5 Model quality [i](#)

### 5.1 Standard geometry [i](#)

Bond lengths and bond angles in the following residue types are not validated in this section: BMA, NAG, 1PE, SO4, CSV, CSQ, MAN

The Z score for a bond length (or angle) is the number of standard deviations the observed value is removed from the expected value. A bond length (or angle) with  $|Z| > 5$  is considered an outlier worth inspection. RMSZ is the root-mean-square of all Z scores of the bond lengths (or angles).

Mol	Chain	Bond lengths		Bond angles	
		RMSZ	$\# Z  > 5$	RMSZ	$\# Z  > 5$
1	A	0.57	0/1347	0.72	1/1823 (0.1%)
1	B	0.52	0/1363	0.69	0/1847
All	All	0.55	0/2710	0.71	1/3670 (0.0%)

There are no bond length outliers.

All (1) bond angle outliers are listed below:

Mol	Chain	Res	Type	Atoms	Z	Observed(°)	Ideal(°)
1	A	110	ARG	N-CA-C	-6.08	94.58	111.00

There are no chirality outliers.

There are no planarity outliers.

### 5.2 Too-close contacts [i](#)

In the following table, the Non-H and H(model) columns list the number of non-hydrogen atoms and hydrogen atoms in the chain respectively. The H(added) column lists the number of hydrogen atoms added and optimized by MolProbity. The Clashes column lists the number of clashes within the asymmetric unit, whereas Symm-Clashes lists symmetry related clashes.

Mol	Chain	Non-H	H(model)	H(added)	Clashes	Symm-Clashes
1	A	1291	0	1247	29	0
1	B	1306	0	1261	24	0
2	A	72	0	61	0	0
3	A	42	0	39	1	0
3	B	42	0	39	2	0
4	A	56	0	50	0	0
4	B	28	0	25	0	0
5	A	15	0	0	0	0

*Continued on next page...*

*Continued from previous page...*

Mol	Chain	Non-H	H(model)	H(added)	Clashes	Symm-Clashes
5	B	20	0	0	0	0
6	A	37	0	24	4	0
7	A	37	0	24	7	0
8	A	16	0	22	11	0
9	B	83	0	70	0	0
10	B	9	0	3	2	0
11	A	101	0	0	1	0
11	B	79	0	0	1	0
All	All	3234	0	2865	58	0

The all-atom clashscore is defined as the number of clashes found per 1000 atoms (including hydrogen atoms). The all-atom clashscore for this structure is 10.

All (58) close contacts within the same asymmetric unit are listed below, sorted by their clash magnitude.

Atom-1	Atom-2	Interatomic distance (Å)	Clash overlap (Å)
7:A:1118[B]:CSV:S20	7:A:1118[B]:CSV:P18	1.52	1.51
6:A:1117[A]:CSQ:S20	6:A:1117[A]:CSQ:P18	1.47	1.45
1:B:70[B]:CYS:SG	1:B:71[B]:CYS:HB3	1.60	1.40
1:B:116[B]:CYS:HB2	1:B:140[B]:CYS:SG	2.00	1.01
1:B:70[B]:CYS:SG	1:B:71[B]:CYS:CB	2.50	0.99
1:A:52:GLU:HG3	8:A:1119:1PE:H161	1.51	0.91
1:B:70[B]:CYS:HG	1:B:71[B]:CYS:HB3	1.37	0.89
1:A:9:ASN:HD21	7:A:1118[B]:CSV:HN32	1.30	0.79
1:A:49:THR:HG21	8:A:1119:1PE:H262	1.66	0.78
1:A:9:ASN:HD21	6:A:1117[A]:CSQ:HN32	1.30	0.77
1:B:40[B]:CYS:HG	1:B:84[B]:CYS:HG	0.77	0.75
1:A:116[B]:CYS:HG	1:A:140[B]:CYS:HG	1.32	0.74
1:A:46:HIS:HE1	8:A:1119:1PE:H151	1.53	0.73
6:A:1117[A]:CSQ:S20	6:A:1117[A]:CSQ:O21	2.46	0.73
1:B:116[B]:CYS:CB	1:B:140[B]:CYS:SG	2.78	0.72
1:B:70[B]:CYS:HG	1:B:71[B]:CYS:CB	2.00	0.71
1:B:107:GLN:HG3	1:B:158:ASN:ND2	2.05	0.71
1:A:49:THR:CG2	8:A:1119:1PE:H262	2.20	0.71
1:A:9:ASN:ND2	7:A:1118[B]:CSV:HN32	1.88	0.71
1:A:70[B]:CYS:HG	1:A:71[B]:CYS:CB	2.05	0.68
7:A:1118[B]:CSV:S20	7:A:1118[B]:CSV:O6	2.53	0.66
1:A:153:VAL:HG22	1:A:160[A]:GLU:OE2	1.96	0.66
1:A:46:HIS:CE1	8:A:1119:1PE:H151	2.31	0.64
1:A:51:THR:OG1	8:A:1119:1PE:H121	2.00	0.62
1:B:116[B]:CYS:CB	1:B:140[B]:CYS:HG	2.12	0.62

*Continued on next page...*

*Continued from previous page...*

Atom-1	Atom-2	Interatomic distance (Å)	Clash overlap (Å)
1:B:9:ASN:HD21	10:B:1116:U:H3	1.50	0.60
7:A:1118[B]:CSV:S20	7:A:1118[B]:CSV:O21	2.54	0.58
1:B:8:TRP:CZ2	1:B:108:PRO:HG3	2.39	0.57
1:B:107:GLN:HG3	1:B:158:ASN:HD21	1.71	0.55
1:A:138:THR:HG23	1:B:135:THR:OG1	2.07	0.54
1:A:49:THR:HB	8:A:1119:1PE:H122	1.89	0.54
1:B:137:LEU:HB3	1:B:140[A]:CYS:SG	2.48	0.54
1:B:9:ASN:ND2	10:B:1116:U:H3	2.07	0.53
1:A:9:ASN:ND2	6:A:1117[A]:CSQ:HN32	2.02	0.52
1:A:137:LEU:HB3	1:A:140[A]:CYS:SG	2.51	0.51
1:A:136:PRO:HG3	1:B:35:TRP:HB3	1.95	0.49
1:A:70[B]:CYS:CB	1:A:71[B]:CYS:HG	2.25	0.49
1:B:116[B]:CYS:SG	1:B:125:ASN:HB3	2.53	0.48
1:A:116[B]:CYS:CB	1:A:140[B]:CYS:HG	2.26	0.47
1:A:116[B]:CYS:HB2	1:A:140[B]:CYS:SG	2.55	0.47
8:A:1119:1PE:OH7	8:A:1119:1PE:OH3	2.33	0.47
1:A:52:GLU:CG	8:A:1119:1PE:H161	2.33	0.47
1:B:26:GLY:O	3:B:1110:NAG:H82	2.17	0.45
1:A:52:GLU:OE1	8:A:1119:1PE:OH6	2.35	0.44
7:A:1118[B]:CSV:H5	7:A:1118[B]:CSV:S20	2.57	0.44
1:A:153:VAL:HG21	1:A:158:ASN:HB2	1.99	0.44
1:B:108:PRO:HA	11:B:1246:HOH:O	2.17	0.43
1:A:46:HIS:HE1	8:A:1119:1PE:C15	2.29	0.43
1:A:26:GLY:O	3:A:1107:NAG:H82	2.19	0.43
1:B:70[B]:CYS:HA	1:B:71[B]:CYS:HA	1.76	0.42
7:A:1118[B]:CSV:C5	7:A:1118[B]:CSV:S20	3.08	0.42
1:B:70[A]:CYS:HA	1:B:71[A]:CYS:HA	1.93	0.41
1:A:108:PRO:HA	11:A:1271:HOH:O	2.19	0.41
1:A:106:GLY:HA2	1:A:161:ILE:HG23	2.02	0.41
1:A:70[B]:CYS:SG	1:A:71[B]:CYS:CB	3.06	0.41
1:B:98:LYS:HG3	3:B:1112:NAG:H82	2.03	0.40
1:B:44:PRO:HA	1:B:83:TRP:CD2	2.56	0.40
1:A:136:PRO:CG	1:B:35:TRP:HB3	2.52	0.40

There are no symmetry-related clashes.

## 5.3 Torsion angles

### 5.3.1 Protein backbone

In the following table, the Percentiles column shows the percent Ramachandran outliers of the chain as a percentile score with respect to all X-ray entries followed by that with respect to entries of similar resolution.

The Analysed column shows the number of residues for which the backbone conformation was analysed, and the total number of residues.

Mol	Chain	Analysed	Favoured	Allowed	Outliers	Percentiles	
1	A	163/167 (98%)	157 (96%)	6 (4%)	0	100	100
1	B	167/167 (100%)	159 (95%)	8 (5%)	0	100	100
All	All	330/334 (99%)	316 (96%)	14 (4%)	0	100	100

There are no Ramachandran outliers to report.

### 5.3.2 Protein sidechains

In the following table, the Percentiles column shows the percent sidechain outliers of the chain as a percentile score with respect to all X-ray entries followed by that with respect to entries of similar resolution.

The Analysed column shows the number of residues for which the sidechain conformation was analysed, and the total number of residues.

Mol	Chain	Analysed	Rotameric	Outliers	Percentiles	
1	A	147/146 (101%)	146 (99%)	1 (1%)	88	94
1	B	149/146 (102%)	144 (97%)	5 (3%)	44	54
All	All	296/292 (101%)	290 (98%)	6 (2%)	60	75

All (6) residues with a non-rotameric sidechain are listed below:

Mol	Chain	Res	Type
1	A	105	GLU
1	B	2	SER
1	B	65	LYS
1	B	105	GLU
1	B	107	GLN
1	B	110	ARG

Some sidechains can be flipped to improve hydrogen bonding and reduce clashes. All (3) such

sidechains are listed below:

Mol	Chain	Res	Type
1	A	9	ASN
1	B	9	ASN
1	B	107	GLN

### 5.3.3 RNA ⓘ

There are no RNA molecules in this entry.

## 5.4 Non-standard residues in protein, DNA, RNA chains ⓘ

There are no non-standard protein/DNA/RNA residues in this entry.

## 5.5 Carbohydrates ⓘ

19 carbohydrates are modelled in this entry.

In the following table, the Counts columns list the number of bonds (or angles) for which Mogul statistics could be retrieved, the number of bonds (or angles) that are observed in the model and the number of bonds (or angles) that are defined in the chemical component dictionary. The Link column lists molecule types, if any, to which the group is linked. The Z score for a bond length (or angle) is the number of standard deviations the observed value is removed from the expected value. A bond length (or angle) with  $|Z| > 2$  is considered an outlier worth inspection. RMSZ is the root-mean-square of all Z scores of the bond lengths (or angles).

Mol	Type	Chain	Res	Link	Bond lengths			Bond angles		
					Counts	RMSZ	$\# Z  > 2$	Counts	RMSZ	$\# Z  > 2$
2	NAG	A	1101	1,2	14,14,15	0.85	1 (7%)	15,19,21	2.10	6 (40%)
2	NAG	A	1102	2	14,14,15	0.66	0	15,19,21	1.54	3 (20%)
2	BMA	A	1103	2	11,11,12	0.82	0	14,15,17	1.34	1 (7%)
2	BMA	A	1104	2	11,11,12	0.78	0	14,15,17	3.00	7 (50%)
2	BMA	A	1105	2	11,11,12	0.75	0	14,15,17	4.15	12 (85%)
2	BMA	A	1106	2	11,11,12	0.84	0	14,15,17	2.42	7 (50%)
4	NAG	A	1109	1,4	14,14,15	0.94	1 (7%)	15,19,21	1.53	2 (13%)
4	NAG	A	1110	4	14,14,15	0.94	1 (7%)	15,19,21	2.37	5 (33%)
4	NAG	A	1111	1,4	14,14,15	0.92	1 (7%)	15,19,21	1.43	2 (13%)
4	NAG	A	1112	4	14,14,15	0.98	1 (7%)	15,19,21	2.06	4 (26%)
9	NAG	B	1101	9,1	14,14,15	0.84	1 (7%)	15,19,21	1.94	6 (40%)
9	NAG	B	1102	9	14,14,15	0.77	0	15,19,21	1.53	4 (26%)

Mol	Type	Chain	Res	Link	Bond lengths			Bond angles		
					Counts	RMSZ	# Z  > 2	Counts	RMSZ	# Z  > 2
9	BMA	B	1103	9	11,11,12	0.76	0	14,15,17	1.31	1 (7%)
9	MAN	B	1104	9	11,11,12	0.74	0	14,15,17	1.53	2 (14%)
9	BMA	B	1105	9	11,11,12	0.77	0	14,15,17	4.13	10 (71%)
9	BMA	B	1106	9	11,11,12	0.81	0	14,15,17	2.73	6 (42%)
9	BMA	B	1107	9	11,11,12	0.81	0	14,15,17	2.40	6 (42%)
4	NAG	B	1108	1,4	14,14,15	1.02	1 (7%)	15,19,21	2.59	6 (40%)
4	NAG	B	1109	4	14,14,15	0.95	1 (7%)	15,19,21	1.99	5 (33%)

In the following table, the Chirals column lists the number of chiral outliers, the number of chiral centers analysed, the number of these observed in the model and the number defined in the chemical component dictionary. Similar counts are reported in the Torsion and Rings columns. '-' means no outliers of that kind were identified.

Mol	Type	Chain	Res	Link	Chirals	Torsions	Rings
2	NAG	A	1101	1,2	-	0/6/23/26	0/1/1/1
2	NAG	A	1102	2	-	0/6/23/26	0/1/1/1
2	BMA	A	1103	2	-	0/2/19/22	0/1/1/1
2	BMA	A	1104	2	-	0/2/19/22	0/1/1/1
2	BMA	A	1105	2	-	0/2/19/22	0/1/1/1
2	BMA	A	1106	2	-	0/2/19/22	1/1/1/1
4	NAG	A	1109	1,4	-	0/6/23/26	0/1/1/1
4	NAG	A	1110	4	-	0/6/23/26	0/1/1/1
4	NAG	A	1111	1,4	-	0/6/23/26	0/1/1/1
4	NAG	A	1112	4	-	0/6/23/26	0/1/1/1
9	NAG	B	1101	9,1	-	0/6/23/26	0/1/1/1
9	NAG	B	1102	9	-	0/6/23/26	0/1/1/1
9	BMA	B	1103	9	-	0/2/19/22	0/1/1/1
9	MAN	B	1104	9	-	0/2/19/22	0/1/1/1
9	BMA	B	1105	9	-	0/2/19/22	0/1/1/1
9	BMA	B	1106	9	-	0/2/19/22	0/1/1/1
9	BMA	B	1107	9	-	0/2/19/22	1/1/1/1
4	NAG	B	1108	1,4	-	0/6/23/26	0/1/1/1
4	NAG	B	1109	4	-	0/6/23/26	0/1/1/1

All (8) bond length outliers are listed below:

Mol	Chain	Res	Type	Atoms	Z	Observed(Å)	Ideal(Å)
2	A	1101	NAG	C1-C2	2.09	1.55	1.52
9	B	1101	NAG	C1-C2	2.27	1.55	1.52
4	A	1110	NAG	C1-C2	2.38	1.55	1.52
4	A	1111	NAG	C1-C2	2.48	1.55	1.52

*Continued on next page...*

*Continued from previous page...*

Mol	Chain	Res	Type	Atoms	Z	Observed(Å)	Ideal(Å)
4	B	1108	NAG	C1-C2	2.49	1.55	1.52
4	A	1109	NAG	C1-C2	2.55	1.56	1.52
4	B	1109	NAG	C1-C2	2.58	1.56	1.52
4	A	1112	NAG	C1-C2	2.63	1.56	1.52

All (95) bond angle outliers are listed below:

Mol	Chain	Res	Type	Atoms	Z	Observed(°)	Ideal(°)
9	B	1105	BMA	O5-C1-C2	-9.24	95.87	110.86
2	A	1105	BMA	O5-C1-C2	-9.19	95.96	110.86
4	A	1110	NAG	C2-N2-C7	-6.00	115.33	123.04
4	B	1109	NAG	C2-N2-C7	-5.00	116.61	123.04
2	A	1105	BMA	C3-C4-C5	-4.05	103.14	110.20
2	A	1101	NAG	O3-C3-C2	-3.97	101.25	109.11
4	A	1110	NAG	C3-C4-C5	-3.91	103.39	110.20
9	B	1105	BMA	C3-C4-C5	-3.80	103.58	110.20
2	A	1102	NAG	C8-C7-N2	-3.62	109.18	116.11
9	B	1101	NAG	O6-C6-C5	-3.40	100.10	111.33
9	B	1106	BMA	O3-C3-C4	-3.36	102.77	110.34
2	A	1101	NAG	O6-C6-C5	-3.12	101.03	111.33
4	B	1109	NAG	C4-C3-C2	-3.11	106.39	111.23
9	B	1101	NAG	O3-C3-C2	-2.98	103.21	109.11
2	A	1101	NAG	C8-C7-N2	-2.92	110.51	116.11
2	A	1104	BMA	O4-C4-C3	-2.89	103.83	110.34
2	A	1105	BMA	O5-C5-C6	-2.83	101.23	107.35
9	B	1105	BMA	O5-C5-C6	-2.79	101.31	107.35
9	B	1101	NAG	C2-N2-C7	-2.72	119.54	123.04
4	B	1109	NAG	C3-C4-C5	-2.67	105.55	110.20
9	B	1105	BMA	O6-C6-C5	-2.57	102.84	111.33
2	A	1105	BMA	O6-C6-C5	-2.48	103.14	111.33
2	A	1101	NAG	O4-C4-C5	-2.48	102.68	109.24
9	B	1102	NAG	C8-C7-N2	-2.45	111.41	116.11
4	A	1112	NAG	C8-C7-N2	-2.44	111.44	116.11
4	A	1109	NAG	C1-O5-C5	-2.41	109.19	112.25
2	A	1106	BMA	C3-C4-C5	-2.38	106.05	110.20
4	B	1108	NAG	C1-O5-C5	-2.35	109.27	112.25
9	B	1102	NAG	C6-C5-C4	-2.24	107.48	113.02
4	A	1110	NAG	C4-C3-C2	-2.21	107.80	111.23
9	B	1107	BMA	C3-C4-C5	-2.19	106.37	110.20
9	B	1101	NAG	C8-C7-N2	-2.18	111.93	116.11
9	B	1101	NAG	O5-C5-C6	-2.18	102.63	107.35
2	A	1106	BMA	O5-C1-C2	-2.15	107.37	110.86

*Continued on next page...*

*Continued from previous page...*

Mol	Chain	Res	Type	Atoms	Z	Observed(°)	Ideal(°)
2	A	1101	NAG	O5-C5-C6	-2.11	102.78	107.35
2	A	1105	BMA	O4-C4-C3	-2.10	105.61	110.34
4	A	1111	NAG	O4-C4-C5	-2.07	103.77	109.24
4	B	1109	NAG	C3-C2-N2	2.02	115.39	110.56
9	B	1104	MAN	O3-C3-C2	2.11	113.81	110.00
2	A	1105	BMA	C6-C5-C4	2.12	118.25	113.02
4	B	1108	NAG	C6-C5-C4	2.22	118.49	113.02
9	B	1107	BMA	O4-C4-C5	2.23	115.15	109.24
2	A	1104	BMA	O4-C4-C5	2.25	115.21	109.24
9	B	1106	BMA	C3-C4-C5	2.29	114.18	110.20
2	A	1102	NAG	C4-C3-C2	2.30	114.81	111.23
9	B	1101	NAG	O7-C7-C8	2.35	126.37	122.06
9	B	1102	NAG	C4-C3-C2	2.38	114.94	111.23
4	B	1108	NAG	C3-C4-C5	2.39	114.36	110.20
2	A	1106	BMA	O4-C4-C5	2.47	115.77	109.24
2	A	1104	BMA	C2-C3-C4	2.60	115.46	111.04
2	A	1104	BMA	O3-C3-C4	2.64	116.28	110.34
2	A	1105	BMA	O3-C3-C2	2.65	114.79	110.00
2	A	1101	NAG	O7-C7-C8	2.67	126.97	122.06
9	B	1105	BMA	O3-C3-C4	2.75	116.53	110.34
9	B	1105	BMA	O4-C4-C5	2.79	116.62	109.24
9	B	1106	BMA	O2-C2-C1	2.81	114.84	109.21
2	A	1102	NAG	O7-C7-C8	2.81	127.22	122.06
4	B	1109	NAG	C1-O5-C5	2.84	115.86	112.25
2	A	1105	BMA	O4-C4-C5	2.92	116.98	109.24
2	A	1106	BMA	O3-C3-C2	2.94	115.31	110.00
4	A	1110	NAG	C3-C2-N2	2.96	117.64	110.56
4	A	1109	NAG	O4-C4-C5	3.00	117.18	109.24
9	B	1102	NAG	O7-C7-C8	3.01	127.58	122.06
4	A	1110	NAG	C1-O5-C5	3.02	116.08	112.25
9	B	1107	BMA	O3-C3-C2	3.07	115.55	110.00
2	A	1104	BMA	C1-C2-C3	3.21	113.33	109.54
2	A	1105	BMA	O3-C3-C4	3.22	117.58	110.34
2	A	1106	BMA	C1-O5-C5	3.24	116.36	112.25
9	B	1107	BMA	C1-O5-C5	3.33	116.47	112.25
4	A	1112	NAG	C1-O5-C5	3.33	116.47	112.25
9	B	1104	MAN	C1-O5-C5	3.37	116.53	112.25
9	B	1106	BMA	O4-C4-C5	3.44	118.36	109.24
9	B	1105	BMA	O3-C3-C2	3.47	116.26	110.00
4	A	1111	NAG	C1-O5-C5	3.56	116.77	112.25
4	A	1112	NAG	C3-C4-C5	3.62	116.52	110.20
2	A	1106	BMA	C1-C2-C3	3.69	113.90	109.54

*Continued on next page...*

*Continued from previous page...*

Mol	Chain	Res	Type	Atoms	Z	Observed(°)	Ideal(°)
2	A	1105	BMA	C1-O5-C5	3.71	116.95	112.25
9	B	1106	BMA	O2-C2-C3	3.71	117.59	110.12
2	A	1103	BMA	O3-C3-C4	3.78	118.85	110.34
9	B	1103	BMA	O3-C3-C4	3.78	118.86	110.34
9	B	1107	BMA	C1-C2-C3	3.90	114.15	109.54
4	B	1108	NAG	O4-C4-C5	3.96	119.74	109.24
9	B	1105	BMA	C1-O5-C5	4.19	117.57	112.25
4	B	1108	NAG	C2-N2-C7	4.25	128.50	123.04
9	B	1107	BMA	O2-C2-C1	4.75	118.73	109.21
4	A	1112	NAG	C4-C3-C2	4.81	118.70	111.23
2	A	1105	BMA	C1-C2-C3	4.85	115.28	109.54
2	A	1106	BMA	O2-C2-C1	4.88	119.00	109.21
9	B	1105	BMA	C1-C2-C3	5.18	115.67	109.54
2	A	1104	BMA	C1-O5-C5	6.33	120.28	112.25
2	A	1104	BMA	O2-C2-C1	6.40	122.03	109.21
4	B	1108	NAG	C3-C2-N2	6.41	125.91	110.56
9	B	1105	BMA	O2-C2-C1	6.84	122.93	109.21
9	B	1106	BMA	C1-O5-C5	6.93	121.05	112.25
2	A	1105	BMA	O2-C2-C1	7.26	123.77	109.21

There are no chirality outliers.

There are no torsion outliers.

All (2) ring outliers are listed below:

Mol	Chain	Res	Type	Atoms
2	A	1106	BMA	C1-C2-C3-C4-C5-O5
9	B	1107	BMA	C1-C2-C3-C4-C5-O5

No monomer is involved in short contacts.

## 5.6 Ligand geometry

17 ligands are modelled in this entry.

In the following table, the Counts columns list the number of bonds (or angles) for which Mogul statistics could be retrieved, the number of bonds (or angles) that are observed in the model and the number of bonds (or angles) that are defined in the chemical component dictionary. The Link column lists molecule types, if any, to which the group is linked. The Z score for a bond length (or angle) is the number of standard deviations the observed value is removed from the expected value. A bond length (or angle) with  $|Z| > 2$  is considered an outlier worth inspection. RMSZ is the root-mean-square of all Z scores of the bond lengths (or angles).

Mol	Type	Chain	Res	Link	Bond lengths			Bond angles		
					Counts	RMSZ	# Z  > 2	Counts	RMSZ	# Z  > 2
3	NAG	A	1107	1	14,14,15	0.96	1 (7%)	15,19,21	2.19	2 (13%)
3	NAG	A	1108	1	14,14,15	0.96	1 (7%)	15,19,21	1.75	5 (33%)
3	NAG	A	1113	1	14,14,15	0.95	1 (7%)	15,19,21	2.34	4 (26%)
5	SO4	A	1114	-	4,4,4	1.08	0	6,6,6	1.63	1 (16%)
5	SO4	A	1115	-	4,4,4	0.84	0	6,6,6	1.66	1 (16%)
5	SO4	A	1116	-	4,4,4	1.61	1 (25%)	6,6,6	3.04	2 (33%)
6	CSQ	A	1117[A]	-	27,40,40	1.10	1 (3%)	35,60,60	2.36	4 (11%)
7	CSV	A	1118[B]	-	27,40,40	1.09	3 (11%)	35,60,60	2.45	5 (14%)
8	1PE	A	1119	-	15,15,15	1.29	2 (13%)	14,14,14	2.34	7 (50%)
3	NAG	B	1110	1	14,14,15	0.92	1 (7%)	15,19,21	2.12	2 (13%)
3	NAG	B	1111	1	14,14,15	1.01	1 (7%)	15,19,21	2.15	6 (40%)
3	NAG	B	1112	1	14,14,15	0.94	1 (7%)	15,19,21	1.58	2 (13%)
5	SO4	B	1113	-	4,4,4	1.61	0	6,6,6	1.50	1 (16%)
5	SO4	B	1114	-	4,4,4	1.87	2 (50%)	6,6,6	1.99	1 (16%)
5	SO4	B	1115	-	4,4,4	1.43	0	6,6,6	1.95	1 (16%)
10	U	B	1116	-	5,9,22	3.76	4 (80%)	6,12,33	4.56	5 (83%)
5	SO4	B	1117	-	4,4,4	1.63	0	6,6,6	1.66	1 (16%)

In the following table, the Chirals column lists the number of chiral outliers, the number of chiral centers analysed, the number of these observed in the model and the number defined in the chemical component dictionary. Similar counts are reported in the Torsion and Rings columns. '-' means no outliers of that kind were identified.

Mol	Type	Chain	Res	Link	Chirals	Torsions	Rings
3	NAG	A	1107	1	-	0/6/23/26	0/1/1/1
3	NAG	A	1108	1	-	0/6/23/26	0/1/1/1
3	NAG	A	1113	1	-	0/6/23/26	0/1/1/1
5	SO4	A	1114	-	-	0/0/0/0	0/0/0/0
5	SO4	A	1115	-	-	0/0/0/0	0/0/0/0
5	SO4	A	1116	-	-	0/0/0/0	0/0/0/0
6	CSQ	A	1117[A]	-	-	0/11/53/53	0/4/4/4
7	CSV	A	1118[B]	-	-	0/11/53/53	0/4/4/4
8	1PE	A	1119	-	-	0/13/13/13	0/0/0/0
3	NAG	B	1110	1	-	0/6/23/26	0/1/1/1
3	NAG	B	1111	1	-	0/6/23/26	0/1/1/1
3	NAG	B	1112	1	-	0/6/23/26	0/1/1/1
5	SO4	B	1113	-	-	0/0/0/0	0/0/0/0
5	SO4	B	1114	-	-	0/0/0/0	0/0/0/0
5	SO4	B	1115	-	-	0/0/0/0	0/0/0/0

Continued on next page...

*Continued from previous page...*

Mol	Type	Chain	Res	Link	Chirals	Torsions	Rings
10	U	B	1116	-	-	0/0/0/26	0/1/1/2
5	SO4	B	1117	-	-	0/0/0/0	0/0/0/0

All (19) bond length outliers are listed below:

Mol	Chain	Res	Type	Atoms	Z	Observed(Å)	Ideal(Å)
10	B	1116	U	O4-C4	-3.43	1.16	1.24
7	A	1118[B]	CSV	C35-N30	2.04	1.38	1.35
10	B	1116	U	C6-C5	2.14	1.42	1.38
8	A	1119	1PE	C22-C12	2.16	1.61	1.49
3	B	1110	NAG	C1-C2	2.19	1.55	1.52
3	A	1107	NAG	C1-C2	2.27	1.55	1.52
3	B	1112	NAG	C1-C2	2.42	1.55	1.52
3	A	1113	NAG	C1-C2	2.44	1.55	1.52
7	A	1118[B]	CSV	P18-O6	2.46	1.61	1.58
5	B	1114	SO4	O2-S	2.51	1.55	1.47
3	A	1108	NAG	C1-C2	2.53	1.56	1.52
3	B	1111	NAG	C1-C2	2.61	1.56	1.52
7	A	1118[B]	CSV	C33-N32	2.68	1.38	1.33
5	B	1114	SO4	O1-S	2.73	1.56	1.47
5	A	1116	SO4	O1-S	2.87	1.57	1.47
8	A	1119	1PE	OH2-C12	2.94	1.57	1.42
6	A	1117[A]	CSQ	C33-N32	3.20	1.39	1.33
10	B	1116	U	C6-N1	4.70	1.45	1.33
10	B	1116	U	C4-N3	5.47	1.43	1.33

All (50) bond angle outliers are listed below:

Mol	Chain	Res	Type	Atoms	Z	Observed(°)	Ideal(°)
5	A	1116	SO4	O2-S-O1	-5.71	91.39	109.50
10	B	1116	U	C1'-N1-C6	-3.94	108.68	119.21
5	A	1114	SO4	O2-S-O1	-3.51	98.37	109.50
10	B	1116	U	C6-N1-C2	-3.36	116.27	121.58
7	A	1118[B]	CSV	C34-C33-N32	-3.25	114.78	123.12
6	A	1117[A]	CSQ	C34-C33-N32	-3.22	114.86	123.12
8	A	1119	1PE	OH4-C24-C14	-3.20	96.13	110.36
3	A	1108	NAG	O4-C4-C5	-3.06	101.13	109.24
6	A	1117[A]	CSQ	O6-P18-O19	-2.44	105.02	114.14
7	A	1118[B]	CSV	O21-P18-O19	-2.42	105.10	114.14
3	A	1108	NAG	C8-C7-N2	-2.35	111.60	116.11
3	B	1111	NAG	O3-C3-C4	-2.32	105.11	110.34
3	A	1113	NAG	O3-C3-C4	-2.26	105.24	110.34

*Continued on next page...*

*Continued from previous page...*

Mol	Chain	Res	Type	Atoms	Z	Observed(°)	Ideal(°)
8	A	1119	1PE	OH7-C16-C26	-2.09	99.15	112.03
3	B	1111	NAG	C6-C5-C4	-2.02	108.02	113.02
3	A	1108	NAG	C2-N2-C7	2.02	125.63	123.04
3	A	1108	NAG	O6-C6-C5	2.04	118.06	111.33
7	A	1118[B]	CSV	O8-C7-C5	2.10	117.23	111.16
3	B	1111	NAG	C3-C4-C5	2.12	113.89	110.20
3	A	1113	NAG	C3-C4-C5	2.21	114.05	110.20
8	A	1119	1PE	OH3-C22-C12	2.31	121.09	110.43
3	B	1111	NAG	O4-C4-C5	2.33	115.42	109.24
3	B	1111	NAG	C3-C2-N2	2.37	116.25	110.56
3	B	1112	NAG	C3-C2-N2	2.49	116.51	110.56
10	B	1116	U	C6-C5-C4	2.63	122.19	117.28
3	A	1113	NAG	C3-C2-N2	2.67	116.96	110.56
8	A	1119	1PE	OH5-C14-C24	3.12	124.22	110.36
3	A	1108	NAG	O5-C5-C6	3.12	114.11	107.35
6	A	1117[A]	CSQ	C11-N12-C13	3.28	120.23	115.61
7	A	1118[B]	CSV	C11-N12-C13	3.40	120.41	115.61
8	A	1119	1PE	OH3-C23-C13	3.45	125.68	110.36
5	B	1113	SO4	O4-S-O3	3.45	123.03	108.98
8	A	1119	1PE	OH5-C25-C15	3.49	125.86	110.36
5	A	1115	SO4	O4-S-O3	3.52	123.30	108.98
5	B	1117	SO4	O4-S-O3	3.64	123.79	108.98
3	B	1112	NAG	C1-O5-C5	3.86	117.15	112.25
8	A	1119	1PE	OH6-C15-C25	4.02	128.25	110.36
5	B	1114	SO4	O4-S-O3	4.29	126.43	108.98
5	A	1116	SO4	O4-S-O3	4.39	126.85	108.98
5	B	1115	SO4	O4-S-O3	4.57	127.57	108.98
3	B	1110	NAG	C1-O5-C5	5.14	118.78	112.25
3	B	1110	NAG	C3-C2-N2	5.43	123.56	110.56
3	A	1107	NAG	C3-C2-N2	5.51	123.76	110.56
10	B	1116	U	C1'-N1-C2	5.83	135.05	118.46
3	B	1111	NAG	C1-O5-C5	5.91	119.74	112.25
3	A	1107	NAG	C1-O5-C5	5.91	119.75	112.25
3	A	1113	NAG	C1-O5-C5	6.80	120.87	112.25
10	B	1116	U	C4-N3-C2	7.41	121.48	114.14
6	A	1117[A]	CSQ	C33-N32-C31	11.86	125.89	114.14
7	A	1118[B]	CSV	C33-N32-C31	12.37	126.40	114.14

There are no chirality outliers.

There are no torsion outliers.

There are no ring outliers.

7 monomers are involved in 27 short contacts:

Mol	Chain	Res	Type	Clashes	Symm-Clashes
3	A	1107	NAG	1	0
6	A	1117[A]	CSQ	4	0
7	A	1118[B]	CSV	7	0
8	A	1119	1PE	11	0
3	B	1110	NAG	1	0
3	B	1112	NAG	1	0
10	B	1116	U	2	0

## 5.7 Other polymers [i](#)

There are no such residues in this entry.

## 5.8 Polymer linkage issues [i](#)

There are no chain breaks in this entry.

## 6 Fit of model and data [i](#)

### 6.1 Protein, DNA and RNA chains [i](#)

In the following table, the column labelled ‘#RSRZ> 2’ contains the number (and percentage) of RSRZ outliers, followed by percent RSRZ outliers for the chain as percentile scores relative to all X-ray entries and entries of similar resolution. The OWAB column contains the minimum, median, 95<sup>th</sup> percentile and maximum values of the occupancy-weighted average B-factor per residue. The column labelled ‘Q< 0.9’ lists the number of (and percentage) of residues with an average occupancy less than 0.9.

Mol	Chain	Analysed	<RSRZ>	#RSRZ>2		OWAB(Å <sup>2</sup> )	Q<0.9
1	A	158/167 (94%)	-0.03	5 (3%)	51 50	26, 39, 72, 93	0
1	B	160/167 (95%)	0.16	8 (5%)	32 32	32, 47, 81, 98	1 (0%)
All	All	318/334 (95%)	0.06	13 (4%)	41 39	26, 42, 78, 98	1 (0%)

All (13) RSRZ outliers are listed below:

Mol	Chain	Res	Type	RSRZ
1	A	108	PRO	6.5
1	B	2	SER	5.8
1	B	107	GLN	5.3
1	B	160[A]	GLU	5.3
1	B	161	ILE	4.1
1	A	160[A]	GLU	3.8
1	A	109	LEU	3.6
1	B	23	PHE	3.3
1	B	16	GLU	3.1
1	A	142	LYS	2.7
1	A	106	GLY	2.4
1	B	120	ARG	2.3
1	B	159	PHE	2.3

### 6.2 Non-standard residues in protein, DNA, RNA chains [i](#)

There are no non-standard protein/DNA/RNA residues in this entry.

### 6.3 Carbohydrates [i](#)

In the following table, the Atoms column lists the number of modelled atoms in the group and the number defined in the chemical component dictionary. LLDF column lists the quality of electron density of the group with respect to its neighbouring residues in protein, DNA or RNA chains.

The B-factors column lists the minimum, median, 95<sup>th</sup> percentile and maximum values of B factors of atoms in the group. The column labelled 'Q< 0.9' lists the number of atoms with occupancy less than 0.9.

Mol	Type	Chain	Res	Atoms	RSCC	RSR	LLDF	B-factors(Å <sup>2</sup> )	Q<0.9
4	NAG	B	1108	14/15	0.88	0.15	1.55	61,65,67,68	5
4	NAG	A	1109	14/15	0.96	0.12	0.38	41,45,48,49	6
2	NAG	A	1101	14/15	0.98	0.12	0.21	33,37,39,40	6
9	NAG	B	1101	14/15	0.96	0.14	-0.25	34,38,40,41	7
2	BMA	A	1104	11/12	0.80	0.12	-	62,65,67,68	5
9	MAN	B	1104	11/12	0.92	0.15	-	63,67,70,73	6
9	BMA	B	1107	11/12	0.89	0.12	-	67,70,72,74	9
9	BMA	B	1106	11/12	0.84	0.13	-	73,76,78,80	9
2	BMA	A	1106	11/12	0.88	0.16	-	71,75,77,78	8
2	BMA	A	1103	11/12	0.96	0.10	-	45,49,52,57	2
4	NAG	B	1109	14/15	0.77	0.21	-	71,75,78,78	8
4	NAG	A	1110	14/15	0.86	0.19	-	51,55,58,58	12
2	BMA	A	1105	11/12	0.94	0.16	-	55,59,61,67	6
9	BMA	B	1105	11/12	0.93	0.13	-	54,57,59,64	4
4	NAG	A	1112	14/15	0.86	0.15	-	60,64,66,66	11
4	NAG	A	1111	14/15	0.94	0.16	-	50,54,57,57	8
9	NAG	B	1102	14/15	0.97	0.10	-	36,40,42,43	3
2	NAG	A	1102	14/15	0.97	0.11	-	35,39,41,42	5
9	BMA	B	1103	11/12	0.97	0.13	-	46,49,52,58	6

## 6.4 Ligands ⓘ

In the following table, the Atoms column lists the number of modelled atoms in the group and the number defined in the chemical component dictionary. LLDF column lists the quality of electron density of the group with respect to its neighbouring residues in protein, DNA or RNA chains. The B-factors column lists the minimum, median, 95<sup>th</sup> percentile and maximum values of B factors of atoms in the group. The column labelled 'Q< 0.9' lists the number of atoms with occupancy less than 0.9.

Mol	Type	Chain	Res	Atoms	RSCC	RSR	LLDF	B-factors(Å <sup>2</sup> )	Q<0.9
5	SO4	A	1115	5/5	0.93	0.30	11.22	46,49,50,53	5
8	1PE	A	1119	16/16	0.93	0.18	4.01	30,34,36,37	13
5	SO4	A	1114	5/5	1.00	0.17	3.33	36,36,39,41	0
5	SO4	A	1116	5/5	0.99	0.17	2.97	48,49,54,56	0
5	SO4	B	1114	5/5	0.90	0.17	2.16	85,88,89,90	0
10	U	B	1116	9/21	0.61	0.28	1.48	79,87,89,90	0
3	NAG	A	1107	14/15	0.89	0.13	1.42	67,71,73,73	8
6	CSQ	A	1117[A]	37/37	0.98	0.15	1.38	30,49,54,55	37
7	CSV	A	1118[B]	37/37	0.98	0.14	0.94	22,29,37,43	37

*Continued on next page...*

*Continued from previous page...*

Mol	Type	Chain	Res	Atoms	RSCC	RSR	LLDF	B-factors( $\text{\AA}^2$ )	Q<0.9
5	SO4	B	1117	5/5	0.86	0.17	0.85	115,119,119,120	0
3	NAG	B	1110	14/15	0.89	0.15	-0.03	65,69,72,72	8
5	SO4	B	1113	5/5	0.99	0.12	-0.35	57,60,61,61	0
3	NAG	A	1108	14/15	0.84	0.11	-	53,56,60,60	6
3	NAG	B	1111	14/15	0.73	0.23	-	82,86,89,89	5
3	NAG	B	1112	14/15	0.91	0.10	-	48,52,55,55	9
3	NAG	A	1113	14/15	0.84	0.23	-	67,70,73,73	7
5	SO4	B	1115	5/5	0.94	0.28	-	108,111,113,113	0

## 6.5 Other polymers [i](#)

There are no such residues in this entry.