



Full wwPDB X-ray Structure Validation Report ⓘ

Jan 31, 2016 – 07:04 PM GMT

PDB ID : 1DX4
Title : ACHE FROM DROSOPHILA MELANOGASTER COMPLEX WITH
TACRINE DERIVATIVE 9-(3-PHENYLMETHYLAMINO)-1,2,3,4-TET
RAHYDROACRIDINE
Authors : Harel, M.; Silman, I.; Sussman, J.L.
Deposited on : 1999-12-20
Resolution : 2.70 Å(reported)

This is a Full wwPDB X-ray Structure Validation Report for a publicly released PDB entry.
We welcome your comments at validation@mail.wwpdb.org
A user guide is available at
<http://wwpdb.org/validation/2016/XrayValidationReportHelp>
with specific help available everywhere you see the ⓘ symbol.

The following versions of software and data (see [references ⓘ](#)) were used in the production of this report:

MolProbity : 4.02b-467
Mogul : 1.7 (RC4), CSD as536be (2015)
Xtriage (Phenix) : 1.9-1692
EDS : rb-20026688
Percentile statistics : 20151230.v01 (using entries in the PDB archive December 30th 2015)
Refmac : 5.8.0135
CCP4 : 6.5.0
Ideal geometry (proteins) : Engh & Huber (2001)
Ideal geometry (DNA, RNA) : Parkinson et al. (1996)
Validation Pipeline (wwPDB-VP) : trunk26865

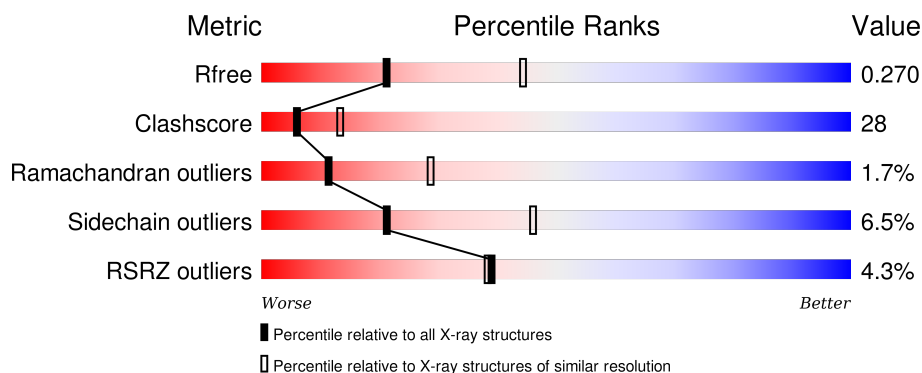
1 Overall quality at a glance

The following experimental techniques were used to determine the structure:

X-RAY DIFFRACTION

The reported resolution of this entry is 2.70 Å.

Percentile scores (ranging between 0-100) for global validation metrics of the entry are shown in the following graphic. The table shows the number of entries on which the scores are based.



Metric	Whole archive (#Entries)	Similar resolution (#Entries, resolution range(Å))
R_{free}	91344	2103 (2.70-2.70)
Clashscore	102246	2422 (2.70-2.70)
Ramachandran outliers	100387	2382 (2.70-2.70)
Sidechain outliers	100360	2382 (2.70-2.70)
RSRZ outliers	91569	2107 (2.70-2.70)

The table below summarises the geometric issues observed across the polymeric chains and their fit to the electron density. The red, orange, yellow and green segments on the lower bar indicate the fraction of residues that contain outliers for ≥ 3 , 2, 1 and 0 types of geometric quality criteria. A grey segment represents the fraction of residues that are not modelled. The numeric value for each fraction is indicated below the corresponding segment, with a dot representing fractions $\leq 5\%$. The upper red bar (where present) indicates the fraction of residues that have poor fit to the electron density. The numeric value is given above the bar.

Mol	Chain	Length	Quality of chain
1	A	585	

The following table lists non-polymeric compounds, carbohydrate monomers and non-standard residues in protein, DNA, RNA chains that are outliers for geometric or electron-density-fit criteria:

Mol	Type	Chain	Res	Chirality	Geometry	Clashes	Electron density
2	SO4	A	1574	-	-	X	X

Continued on next page...

Continued from previous page...

Mol	Type	Chain	Res	Chirality	Geometry	Clashes	Electron density
5	760	A	1580	-	X	X	X

2 Entry composition [i](#)

There are 6 unique types of molecules in this entry. The entry contains 4413 atoms, of which 0 are hydrogens and 0 are deuteriums.

In the tables below, the ZeroOcc column contains the number of atoms modelled with zero occupancy, the AltConf column contains the number of residues with at least one atom in alternate conformation and the Trace column contains the number of residues modelled with at most 2 atoms.

- Molecule 1 is a protein called ACETYLCHOLINESTERASE.

Mol	Chain	Residues	Atoms					ZeroOcc	AltConf	Trace
1	A	537	Total	C	N	O	S	0	0	0
			4231	2698	710	798	25			

- Molecule 2 is SULFATE ION (three-letter code: SO4) (formula: O₄S).



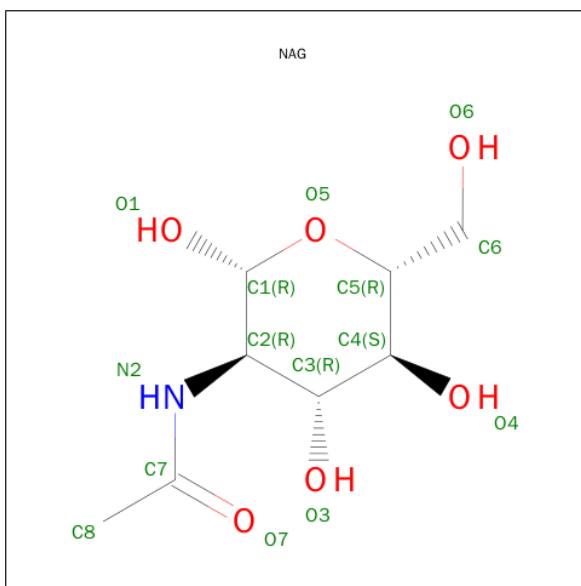
Mol	Chain	Residues	Atoms			ZeroOcc	AltConf
2	A	1	Total	O	S	0	0
			5	4	1		

- Molecule 3 is a polymer of unknown type called SUGAR (4-MER).

Mol	Chain	Residues	Atoms				ZeroOcc	AltConf
3	A	4	Total	C	N	O	0	0
			50	28	2	20		

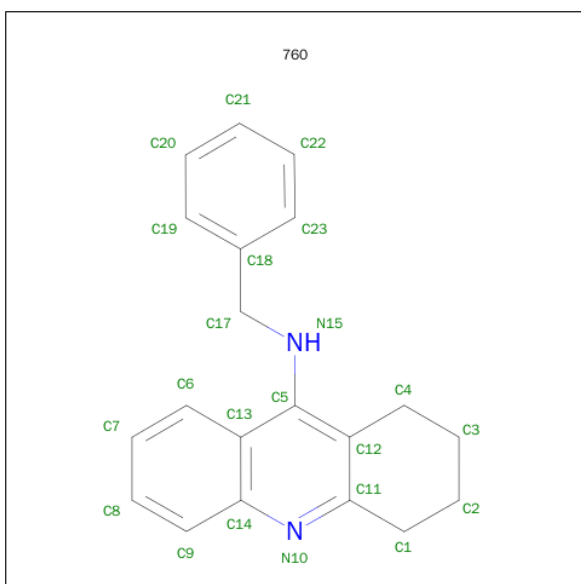
- Molecule 4 is SUGAR (N-ACETYL-D-GLUCOSAMINE) (three-letter code: NAG) (formula:

C₈H₁₅NO₆).



Mol	Chain	Residues	Atoms				ZeroOcc	AltConf
4	A	1	Total	C	N	O	0	0
			14	8	1	5		

- Molecule 5 is 9-(3-PHENYLMETHYLAMINO)-1,2,3,4-TETRAHYDROACRIDINE (three-letter code: 760) (formula: C₂₀H₂₀N₂).



Mol	Chain	Residues	Atoms				ZeroOcc	AltConf
5	A	1	Total	C	N		0	0
			22	20	2			

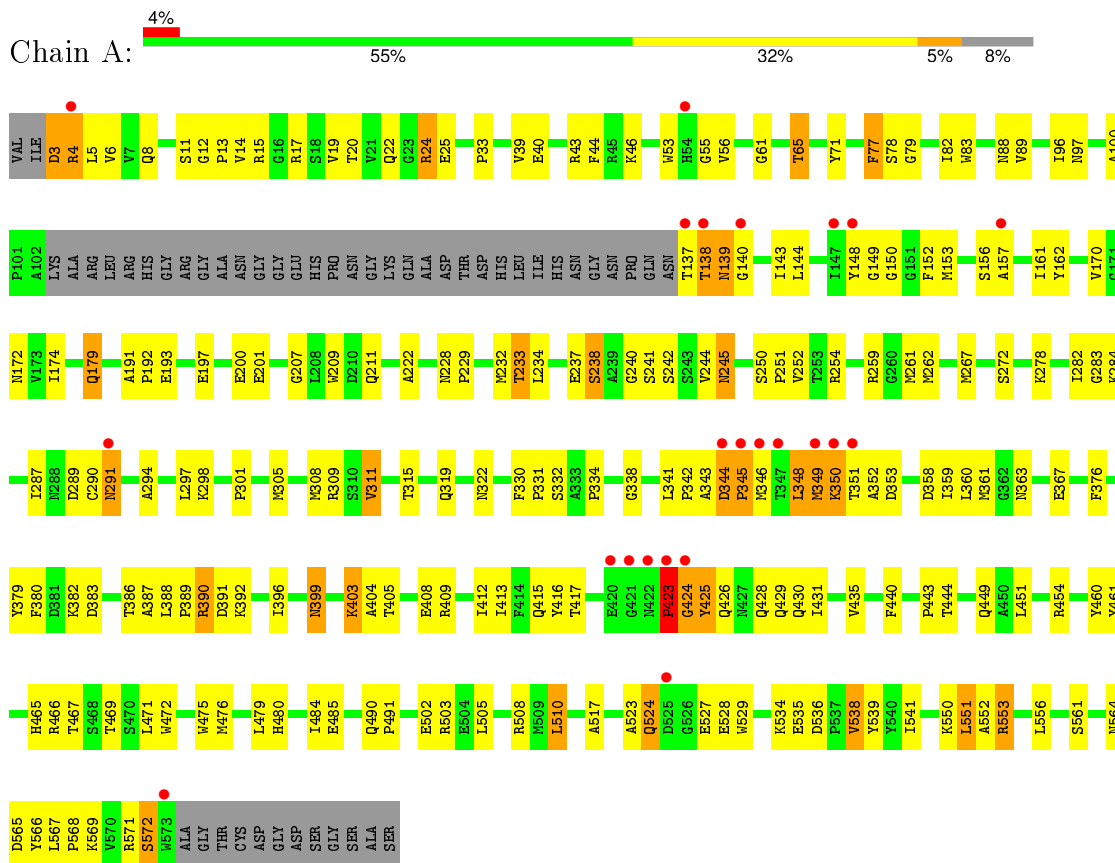
- Molecule 6 is water.

Mol	Chain	Residues	Atoms		ZeroOcc	AltConf
6	A	91	Total	O	0	0
			91	91		

3 Residue-property plots

These plots are drawn for all protein, RNA and DNA chains in the entry. The first graphic for a chain summarises the proportions of errors displayed in the second graphic. The second graphic shows the sequence view annotated by issues in geometry and electron density. Residues are color-coded according to the number of geometric quality criteria for which they contain at least one outlier: green = 0, yellow = 1, orange = 2 and red = 3 or more. A red dot above a residue indicates a poor fit to the electron density ($RSRZ > 2$). Stretches of 2 or more consecutive residues without any outlier are shown as a green connector. Residues present in the sample, but not in the model, are shown in grey.

● Molecule 1: ACETYLCHOLINESTERASE



4 Data and refinement statistics

Property	Value	Source
Space group	P 43 21 2	Depositor
Cell constants a, b, c, α , β , γ	95.81Å 95.81Å 162.03Å 90.00° 90.00° 90.00°	Depositor
Resolution (Å)	30.00 – 2.70 29.78 – 2.70	Depositor EDS
% Data completeness (in resolution range)	97.7 (30.00-2.70) 96.2 (29.78-2.70)	Depositor EDS
R_{merge}	(Not available)	Depositor
R_{sym}	0.04	Depositor
$\langle I/\sigma(I) \rangle$ ¹	2.08 (at 2.68Å)	Xtriage
Refinement program	X-PLOR 3.8	Depositor
R, R_{free}	0.220 , 0.263 0.231 , 0.270	Depositor DCC
R_{free} test set	2031 reflections (9.86%)	DCC
Wilson B-factor (Å ²)	50.0	Xtriage
Anisotropy	0.621	Xtriage
Bulk solvent k_{sol} (e/Å ³), B_{sol} (Å ²)	0.32 , 51.8	EDS
Estimated twinning fraction	No twinning to report.	Xtriage
L-test for twinning ²	$\langle L \rangle = 0.51$, $\langle L^2 \rangle = 0.34$	Xtriage
Outliers	1 of 20596 reflections (0.005%)	Xtriage
F_o, F_c correlation	0.93	EDS
Total number of atoms	4413	wwPDB-VP
Average B, all atoms (Å ²)	50.0	wwPDB-VP

Xtriage's analysis on translational NCS is as follows: *The largest off-origin peak in the Patterson function is 4.62% of the height of the origin peak. No significant pseudotranslation is detected.*

¹Intensities estimated from amplitudes.

²Theoretical values of $\langle |L| \rangle$, $\langle L^2 \rangle$ for acentric reflections are 0.5, 0.375 respectively for untwinned datasets, and 0.333, 0.2 for perfectly twinned datasets.

5 Model quality [i](#)

5.1 Standard geometry [i](#)

Bond lengths and bond angles in the following residue types are not validated in this section: MAN, 760, BMA, NAG, SO4

The Z score for a bond length (or angle) is the number of standard deviations the observed value is removed from the expected value. A bond length (or angle) with $|Z| > 5$ is considered an outlier worth inspection. RMSZ is the root-mean-square of all Z scores of the bond lengths (or angles).

Mol	Chain	Bond lengths		Bond angles	
		RMSZ	$\# Z > 5$	RMSZ	$\# Z > 5$
1	A	0.42	0/4352	0.65	1/5923 (0.0%)

There are no bond length outliers.

All (1) bond angle outliers are listed below:

Mol	Chain	Res	Type	Atoms	Z	Observed($^{\circ}$)	Ideal($^{\circ}$)
1	A	423	PRO	CA-N-CD	-6.55	102.33	111.50

There are no chirality outliers.

There are no planarity outliers.

5.2 Too-close contacts [i](#)

In the following table, the Non-H and H(model) columns list the number of non-hydrogen atoms and hydrogen atoms in the chain respectively. The H(added) column lists the number of hydrogen atoms added and optimized by MolProbity. The Clashes column lists the number of clashes within the asymmetric unit, whereas Symm-Clashes lists symmetry related clashes.

Mol	Chain	Non-H	H(model)	H(added)	Clashes	Symm-Clashes
1	A	4231	0	4024	231	0
2	A	5	0	0	3	0
3	A	50	0	43	3	0
4	A	14	0	13	2	0
5	A	22	0	20	13	0
6	A	91	0	0	5	0
All	All	4413	0	4100	239	0

The all-atom clashscore is defined as the number of clashes found per 1000 atoms (including hydrogen atoms). The all-atom clashscore for this structure is 28.

All (239) close contacts within the same asymmetric unit are listed below, sorted by their clash magnitude.

Atom-1	Atom-2	Interatomic distance (Å)	Clash overlap (Å)
1:A:77:PHE:CE2	1:A:382:LYS:HD2	1.72	1.23
1:A:77:PHE:HE2	1:A:382:LYS:HD2	0.97	1.13
1:A:4:ARG:HA	1:A:4:ARG:HE	0.94	1.10
5:A:1580:760:H9	6:A:2065:HOH:O	1.56	1.04
1:A:553:ARG:HH11	1:A:553:ARG:HG2	1.19	1.04
1:A:161:ILE:HD11	1:A:485:GLU:HG2	1.34	1.04
1:A:350:LYS:HG2	1:A:351:THR:HG23	1.07	1.04
1:A:4:ARG:CA	1:A:4:ARG:HE	1.71	1.02
5:A:1580:760:H42	5:A:1580:760:H19	1.41	1.02
1:A:4:ARG:HA	1:A:4:ARG:NE	1.78	0.98
1:A:222:ALA:HB3	1:A:229:PRO:HG3	1.45	0.98
1:A:538:VAL:HG13	1:A:553:ARG:NH1	1.79	0.97
1:A:524:GLN:OE1	1:A:527:GLU:HB3	1.68	0.93
1:A:551:LEU:HD23	1:A:551:LEU:N	1.83	0.92
1:A:553:ARG:HH11	1:A:553:ARG:CG	1.85	0.90
1:A:350:LYS:CG	1:A:351:THR:HG23	2.01	0.89
1:A:12:GLY:HA3	1:A:53:TRP:CD1	2.10	0.87
5:A:1580:760:H42	5:A:1580:760:C19	2.04	0.87
1:A:350:LYS:HG2	1:A:351:THR:CG2	2.01	0.84
1:A:344:ASP:O	1:A:348:LEU:HD13	1.76	0.84
1:A:33:PRO:HG2	1:A:53:TRP:HZ3	1.44	0.82
1:A:77:PHE:HD1	1:A:78:SER:N	1.77	0.82
1:A:376:PHE:HB3	1:A:379:TYR:HD2	1.44	0.82
1:A:77:PHE:HE2	1:A:382:LYS:CD	1.88	0.80
1:A:440:PHE:O	1:A:444:THR:HG23	1.82	0.80
1:A:33:PRO:HG2	1:A:53:TRP:CZ3	2.17	0.79
1:A:233:THR:HB	1:A:259:ARG:HG2	1.64	0.79
1:A:71:TYR:CE1	5:A:1580:760:H23	2.20	0.76
1:A:179:GLN:HA	1:A:179:GLN:HE21	1.49	0.76
1:A:12:GLY:HA3	1:A:53:TRP:NE1	2.01	0.76
1:A:551:LEU:HD23	1:A:551:LEU:H	1.51	0.75
1:A:539:TYR:CE1	1:A:552:ALA:O	2.39	0.75
1:A:238:SER:OG	2:A:1574:SO4:S	2.44	0.74
1:A:338:GLY:HA2	1:A:342:PRO:HA	1.71	0.73
1:A:77:PHE:CE2	1:A:382:LYS:CD	2.65	0.72
1:A:566:TYR:C	1:A:568:PRO:HD2	2.10	0.72
1:A:386:THR:HG23	6:A:2050:HOH:O	1.89	0.71
1:A:319:GLN:NE2	1:A:322:ASN:HD21	1.88	0.71
3:A:1577:NAG:H61	3:A:1578:MAN:O2	1.90	0.71
1:A:238:SER:OG	2:A:1574:SO4:O3	2.06	0.71

Continued on next page...

Continued from previous page...

Atom-1	Atom-2	Interatomic distance (Å)	Clash overlap (Å)
1:A:157:ALA:H	1:A:179:GLN:NE2	1.89	0.71
1:A:413:ILE:O	1:A:417:THR:HG23	1.92	0.70
1:A:233:THR:HG21	1:A:517:ALA:HA	1.74	0.69
1:A:250:SER:O	1:A:254:ARG:HB2	1.92	0.69
1:A:6:VAL:HG22	1:A:15:ARG:HB3	1.73	0.69
1:A:11:SER:HB2	1:A:53:TRP:CZ2	2.28	0.69
1:A:12:GLY:CA	1:A:53:TRP:NE1	2.58	0.67
1:A:553:ARG:NH1	1:A:553:ARG:HG2	2.01	0.67
1:A:157:ALA:H	1:A:179:GLN:HE22	1.41	0.66
1:A:523:ALA:HB2	1:A:529:TRP:HB3	1.78	0.66
1:A:153:MET:HE2	1:A:332:SER:HB2	1.76	0.66
1:A:290:CYS:O	1:A:291:ASN:HB2	1.96	0.66
1:A:153:MET:CE	1:A:332:SER:H	2.09	0.65
1:A:528:GLU:HG2	6:A:2074:HOH:O	1.97	0.64
1:A:201:GLU:HG2	1:A:305:MET:HG3	1.80	0.64
1:A:12:GLY:CA	1:A:53:TRP:HE1	2.11	0.64
1:A:449:GLN:NE2	1:A:534:LYS:HG3	2.11	0.64
1:A:505:LEU:HD13	1:A:508:ARG:NH2	2.13	0.64
1:A:278:LYS:HE3	1:A:282:ILE:HD11	1.79	0.64
1:A:551:LEU:CD2	1:A:551:LEU:N	2.59	0.64
1:A:3:ASP:HB3	1:A:6:VAL:HG23	1.80	0.63
1:A:390:ARG:O	1:A:390:ARG:HD3	1.98	0.63
1:A:538:VAL:CG1	1:A:553:ARG:NH1	2.57	0.63
1:A:77:PHE:HZ	1:A:471:LEU:O	1.81	0.63
1:A:153:MET:CE	1:A:332:SER:HB2	2.29	0.63
1:A:389:PRO:HB2	1:A:391:ASP:OD1	1.98	0.62
1:A:40:GLU:O	1:A:309:ARG:HD3	1.99	0.62
1:A:13:PRO:HD2	1:A:55:GLY:O	2.00	0.62
1:A:71:TYR:CZ	5:A:1580:760:H23	2.35	0.62
1:A:191:ALA:HB3	1:A:192:PRO:HD3	1.80	0.62
1:A:399:ASN:HD22	1:A:399:ASN:C	2.02	0.62
1:A:479:LEU:H	1:A:479:LEU:HD23	1.66	0.61
1:A:505:LEU:HD13	1:A:508:ARG:HH21	1.66	0.61
1:A:77:PHE:CD2	1:A:382:LYS:NZ	2.66	0.60
1:A:350:LYS:HA	1:A:454:ARG:HH21	1.65	0.60
1:A:343:ALA:C	1:A:348:LEU:HD11	2.21	0.60
1:A:77:PHE:CD2	1:A:382:LYS:HD2	2.34	0.60
1:A:571:ARG:HG3	1:A:571:ARG:HH11	1.66	0.60
1:A:77:PHE:CD1	1:A:78:SER:N	2.67	0.60
1:A:538:VAL:HG13	1:A:553:ARG:CZ	2.32	0.60
1:A:13:PRO:HB2	1:A:56:VAL:HA	1.82	0.60

Continued on next page...

Continued from previous page...

Atom-1	Atom-2	Interatomic distance (Å)	Clash overlap (Å)
1:A:349:MET:CE	1:A:349:MET:HA	2.31	0.59
1:A:330:PHE:CZ	5:A:1580:760:H21	2.38	0.59
1:A:376:PHE:HB3	1:A:379:TYR:CD2	2.33	0.58
1:A:22:GLN:HG3	1:A:170:VAL:CG2	2.32	0.58
1:A:389:PRO:HD2	1:A:392:LYS:HG3	1.84	0.58
1:A:405:THR:OG1	1:A:408:GLU:HG2	2.04	0.58
1:A:193:GLU:O	1:A:298:LYS:HE3	2.02	0.58
1:A:242:SER:O	1:A:245:ASN:HB3	2.04	0.58
1:A:261:MET:HA	1:A:360:LEU:O	2.03	0.57
1:A:343:ALA:HB3	1:A:348:LEU:HD12	1.84	0.57
1:A:272:SER:O	1:A:334:PRO:HD2	2.03	0.57
1:A:553:ARG:CG	1:A:553:ARG:NH1	2.55	0.57
1:A:349:MET:HE2	1:A:349:MET:O	2.04	0.57
1:A:567:LEU:N	1:A:568:PRO:HD2	2.19	0.57
1:A:77:PHE:CD1	1:A:79:GLY:N	2.70	0.56
1:A:144:LEU:HD11	1:A:517:ALA:CB	2.34	0.56
1:A:222:ALA:HB3	1:A:229:PRO:CG	2.30	0.56
1:A:343:ALA:HB3	1:A:348:LEU:CD1	2.35	0.56
1:A:140:GLY:HA3	1:A:228:ASN:HB2	1.87	0.56
1:A:267:MET:HE1	1:A:341:LEU:HD21	1.87	0.56
1:A:144:LEU:HD11	1:A:517:ALA:HB1	1.86	0.56
1:A:349:MET:HE3	1:A:349:MET:HA	1.88	0.56
1:A:561:SER:O	1:A:565:ASP:HB2	2.05	0.56
1:A:77:PHE:HD2	1:A:382:LYS:NZ	2.03	0.55
1:A:440:PHE:O	1:A:443:PRO:HD2	2.06	0.55
1:A:24:ARG:HH21	1:A:172:ASN:HB2	1.70	0.55
1:A:153:MET:HE3	1:A:332:SER:H	1.70	0.55
1:A:4:ARG:CA	1:A:4:ARG:NE	2.48	0.55
1:A:12:GLY:C	1:A:53:TRP:HE1	2.10	0.55
3:A:1577:NAG:H61	3:A:1578:MAN:C2	2.37	0.55
1:A:245:ASN:HB2	1:A:262:MET:SD	2.48	0.54
1:A:424:GLY:O	1:A:425:TYR:CG	2.61	0.54
1:A:465:HIS:HE1	1:A:502:GLU:OE2	1.90	0.54
1:A:311:VAL:CG2	1:A:315:THR:HB	2.37	0.54
1:A:349:MET:HE2	1:A:454:ARG:HG3	1.89	0.54
1:A:267:MET:CE	1:A:341:LEU:HD21	2.36	0.54
1:A:440:PHE:C	1:A:443:PRO:HD2	2.29	0.53
1:A:567:LEU:N	1:A:568:PRO:CD	2.70	0.53
1:A:311:VAL:HG23	1:A:315:THR:HB	1.90	0.53
2:A:1574:SO4:O1	5:A:1580:760:H20	2.09	0.53
1:A:77:PHE:HD1	1:A:78:SER:H	1.54	0.53

Continued on next page...

Continued from previous page...

Atom-1	Atom-2	Interatomic distance (Å)	Clash overlap (Å)
1:A:251:PRO:HG2	1:A:342:PRO:HG3	1.91	0.53
1:A:387:ALA:HA	1:A:424:GLY:CA	2.38	0.53
1:A:161:ILE:HG23	1:A:162:TYR:CD1	2.44	0.53
1:A:5:LEU:O	1:A:15:ARG:HA	2.09	0.53
1:A:467:THR:HG22	1:A:469:THR:H	1.74	0.53
1:A:179:GLN:CA	1:A:179:GLN:HE21	2.19	0.52
1:A:409:ARG:O	1:A:413:ILE:HG13	2.10	0.52
1:A:6:VAL:HA	1:A:14:VAL:O	2.10	0.52
1:A:423:PRO:O	1:A:426:GLN:N	2.42	0.52
1:A:139:ASN:O	1:A:139:ASN:ND2	2.43	0.52
1:A:150:GLY:CA	5:A:1580:760:H31	2.40	0.51
1:A:82:ILE:HG13	1:A:83:TRP:CD1	2.45	0.51
1:A:535:GLU:H	1:A:535:GLU:CD	2.13	0.51
1:A:308:MET:HE3	1:A:308:MET:HA	1.92	0.51
1:A:403:LYS:HD3	1:A:404:ALA:N	2.25	0.51
1:A:536:ASP:OD1	1:A:553:ARG:CD	2.59	0.51
1:A:150:GLY:HA2	5:A:1580:760:H31	1.92	0.51
1:A:157:ALA:N	1:A:179:GLN:HE22	2.09	0.51
1:A:565:ASP:C	1:A:568:PRO:HD2	2.32	0.51
1:A:408:GLU:OE1	1:A:571:ARG:NH1	2.44	0.50
1:A:367:GLU:OE1	1:A:480:HIS:HD2	1.93	0.50
1:A:153:MET:CE	1:A:332:SER:CB	2.89	0.50
1:A:387:ALA:HA	1:A:424:GLY:HA2	1.93	0.50
1:A:237:GLU:O	1:A:238:SER:CB	2.60	0.50
1:A:349:MET:CE	1:A:454:ARG:HG3	2.41	0.50
1:A:399:ASN:ND2	1:A:399:ASN:C	2.64	0.50
1:A:297:LEU:O	1:A:301:PRO:HG3	2.12	0.50
1:A:96:ILE:CG2	1:A:97:ASN:N	2.75	0.50
1:A:408:GLU:O	1:A:412:ILE:HG13	2.12	0.49
1:A:241:SER:OG	1:A:262:MET:HB3	2.11	0.49
1:A:367:GLU:OE1	1:A:480:HIS:CD2	2.65	0.49
1:A:490:GLN:N	1:A:491:PRO:CD	2.75	0.49
1:A:137:THR:O	1:A:138:THR:C	2.51	0.49
1:A:349:MET:HG3	1:A:454:ARG:HG3	1.93	0.49
1:A:290:CYS:O	1:A:291:ASN:CB	2.60	0.49
1:A:179:GLN:HA	1:A:179:GLN:NE2	2.23	0.48
1:A:153:MET:HE1	1:A:332:SER:H	1.76	0.48
1:A:143:ILE:HB	1:A:232:MET:HG2	1.95	0.48
1:A:140:GLY:CA	1:A:228:ASN:HB2	2.44	0.48
1:A:152:PHE:CE2	1:A:334:PRO:HD3	2.48	0.47
1:A:361:MET:O	1:A:460:TYR:HA	2.13	0.47

Continued on next page...

Continued from previous page...

Atom-1	Atom-2	Interatomic distance (Å)	Clash overlap (Å)
1:A:461:TYR:CD1	1:A:461:TYR:C	2.86	0.47
1:A:330:PHE:HB3	1:A:331:PRO:HD2	1.97	0.47
1:A:197:GLU:HB2	6:A:2031:HOH:O	2.14	0.47
1:A:6:VAL:CG2	1:A:15:ARG:HB3	2.44	0.46
1:A:207:GLY:O	1:A:211:GLN:HG3	2.16	0.46
1:A:284:LYS:O	1:A:287:ILE:HB	2.15	0.46
1:A:390:ARG:HD3	1:A:390:ARG:C	2.36	0.46
1:A:424:GLY:O	1:A:425:TYR:CB	2.63	0.46
1:A:538:VAL:HG13	1:A:553:ARG:HH11	1.74	0.46
1:A:539:TYR:CZ	1:A:552:ALA:O	2.69	0.46
1:A:100:ALA:HA	1:A:174:ILE:HD13	1.98	0.46
1:A:319:GLN:NE2	1:A:322:ASN:ND2	2.62	0.46
1:A:150:GLY:HA2	5:A:1580:760:C3	2.46	0.45
1:A:565:ASP:O	1:A:568:PRO:HG2	2.15	0.45
1:A:89:VAL:O	1:A:89:VAL:HG23	2.16	0.45
1:A:143:ILE:HD11	1:A:222:ALA:HB1	1.98	0.45
1:A:404:ALA:HB1	1:A:408:GLU:HG3	1.98	0.45
5:A:1580:760:C4	5:A:1580:760:H19	2.27	0.45
1:A:523:ALA:HA	1:A:527:GLU:OE1	2.17	0.45
1:A:33:PRO:CG	1:A:53:TRP:CZ3	2.95	0.45
1:A:161:ILE:CD1	1:A:485:GLU:HG2	2.25	0.45
1:A:233:THR:CG2	6:A:2072:HOH:O	2.65	0.45
1:A:345:PRO:HA	1:A:348:LEU:HD22	1.98	0.45
1:A:19:VAL:HG12	1:A:20:THR:N	2.30	0.45
1:A:349:MET:HE3	1:A:352:ALA:HB3	1.99	0.45
1:A:564:ASN:O	1:A:565:ASP:OD1	2.35	0.45
1:A:449:GLN:HE21	1:A:534:LYS:HG3	1.81	0.45
1:A:77:PHE:HD1	1:A:79:GLY:H	1.58	0.44
1:A:431:ILE:O	1:A:435:VAL:HG23	2.17	0.44
1:A:344:ASP:O	1:A:346:MET:N	2.51	0.44
1:A:43:ARG:HD3	1:A:44:PHE:CZ	2.53	0.44
1:A:536:ASP:OD1	1:A:553:ARG:NE	2.51	0.44
1:A:388:LEU:HA	1:A:389:PRO:HD3	1.88	0.43
1:A:137:THR:O	1:A:139:ASN:OD1	2.35	0.43
1:A:567:LEU:HA	1:A:567:LEU:HD12	1.79	0.43
1:A:396:ILE:O	1:A:399:ASN:HB3	2.19	0.43
1:A:556:LEU:HA	1:A:556:LEU:HD23	1.81	0.43
1:A:283:GLY:O	1:A:287:ILE:HG12	2.18	0.43
1:A:153:MET:HE1	1:A:332:SER:N	2.34	0.43
1:A:358:ASP:C	1:A:359:ILE:HD12	2.39	0.43
1:A:536:ASP:OD1	1:A:553:ARG:HD3	2.17	0.43

Continued on next page...

Continued from previous page...

Atom-1	Atom-2	Interatomic distance (Å)	Clash overlap (Å)
1:A:423:PRO:HB2	1:A:424:GLY:H	1.50	0.43
1:A:240:GLY:O	1:A:244:VAL:HG23	2.19	0.43
1:A:17:ARG:HG3	1:A:17:ARG:HH11	1.83	0.43
1:A:491:PRO:O	1:A:503:ARG:HG2	2.19	0.43
1:A:88:ASN:ND2	4:A:1676:NAG:C6	2.83	0.42
1:A:39:VAL:HG12	1:A:40:GLU:N	2.34	0.42
1:A:61:GLY:HA2	3:A:1579:BMA:O3	2.20	0.42
1:A:388:LEU:HD11	1:A:392:LYS:HB3	2.02	0.42
1:A:234:LEU:HB2	1:A:244:VAL:HG13	2.00	0.42
1:A:19:VAL:O	1:A:25:GLU:HA	2.20	0.42
1:A:466:ARG:NH2	1:A:472:TRP:O	2.52	0.42
1:A:571:ARG:HG3	1:A:571:ARG:NH1	2.33	0.42
1:A:46:LYS:HE3	1:A:200:GLU:OE2	2.19	0.42
1:A:22:GLN:HG3	1:A:170:VAL:HG22	2.00	0.41
1:A:569:LYS:O	1:A:572:SER:HB3	2.19	0.41
1:A:156:SER:HA	1:A:179:GLN:HE22	1.84	0.41
1:A:153:MET:HE2	1:A:332:SER:CB	2.47	0.41
1:A:209:TRP:CZ3	1:A:252:VAL:HG11	2.54	0.41
1:A:541:ILE:HG12	1:A:550:LYS:O	2.21	0.41
1:A:287:ILE:HB	1:A:294:ALA:HB2	2.02	0.41
1:A:380:PHE:CD1	1:A:428:GLN:NE2	2.88	0.41
1:A:539:TYR:CE2	1:A:541:ILE:HD11	2.55	0.41
1:A:24:ARG:HH21	1:A:172:ASN:CB	2.34	0.41
1:A:363:ASN:ND2	1:A:460:TYR:OH	2.54	0.41
1:A:88:ASN:ND2	4:A:1676:NAG:H62	2.35	0.41
1:A:65:THR:O	1:A:89:VAL:HA	2.20	0.41
1:A:150:GLY:N	5:A:1580:760:H31	2.35	0.41
1:A:475:TRP:CE2	1:A:476:MET:HG3	2.56	0.40
5:A:1580:760:H42	5:A:1580:760:C18	2.49	0.40
1:A:149:GLY:HA3	1:A:238:SER:HB3	2.04	0.40
1:A:201:GLU:CG	1:A:305:MET:HG3	2.51	0.40
1:A:510:LEU:O	1:A:510:LEU:HD22	2.21	0.40
1:A:237:GLU:OE1	1:A:484:ILE:HD11	2.22	0.40
1:A:148:TYR:CE2	1:A:179:GLN:NE2	2.90	0.40
1:A:416:TYR:C	1:A:430:GLN:HE21	2.24	0.40

There are no symmetry-related clashes.

5.3 Torsion angles [i](#)

5.3.1 Protein backbone [i](#)

In the following table, the Percentiles column shows the percent Ramachandran outliers of the chain as a percentile score with respect to all X-ray entries followed by that with respect to entries of similar resolution.

The Analysed column shows the number of residues for which the backbone conformation was analysed, and the total number of residues.

Mol	Chain	Analysed	Favoured	Allowed	Outliers	Percentiles	
1	A	533/585 (91%)	474 (89%)	50 (9%)	9 (2%)	11	29

All (9) Ramachandran outliers are listed below:

Mol	Chain	Res	Type
1	A	139	ASN
1	A	350	LYS
1	A	138	THR
1	A	291	ASN
1	A	423	PRO
1	A	424	GLY
1	A	425	TYR
1	A	572	SER
1	A	345	PRO

5.3.2 Protein sidechains [i](#)

In the following table, the Percentiles column shows the percent sidechain outliers of the chain as a percentile score with respect to all X-ray entries followed by that with respect to entries of similar resolution.

The Analysed column shows the number of residues for which the sidechain conformation was analysed, and the total number of residues.

Mol	Chain	Analysed	Rotameric	Outliers	Percentiles	
1	A	446/480 (93%)	417 (94%)	29 (6%)	21	46

All (29) residues with a non-rotameric sidechain are listed below:

Mol	Chain	Res	Type
1	A	3	ASP
1	A	4	ARG

Continued on next page...

Continued from previous page...

Mol	Chain	Res	Type
1	A	8	GLN
1	A	24	ARG
1	A	65	THR
1	A	77	PHE
1	A	179	GLN
1	A	233	THR
1	A	238	SER
1	A	245	ASN
1	A	289	ASP
1	A	311	VAL
1	A	344	ASP
1	A	348	LEU
1	A	349	MET
1	A	353	ASP
1	A	383	ASP
1	A	390	ARG
1	A	399	ASN
1	A	403	LYS
1	A	415	GLN
1	A	423	PRO
1	A	429	GLN
1	A	451	LEU
1	A	510	LEU
1	A	524	GLN
1	A	538	VAL
1	A	551	LEU
1	A	553	ARG

Some sidechains can be flipped to improve hydrogen bonding and reduce clashes. All (14) such sidechains are listed below:

Mol	Chain	Res	Type
1	A	139	ASN
1	A	172	ASN
1	A	179	GLN
1	A	263	GLN
1	A	319	GLN
1	A	363	ASN
1	A	399	ASN
1	A	415	GLN
1	A	430	GLN
1	A	438	HIS
1	A	445	ASN

Continued on next page...

Continued from previous page...

Mol	Chain	Res	Type
1	A	449	GLN
1	A	465	HIS
1	A	480	HIS

5.3.3 RNA ⓘ

There are no RNA molecules in this entry.

5.4 Non-standard residues in protein, DNA, RNA chains ⓘ

There are no non-standard protein/DNA/RNA residues in this entry.

5.5 Carbohydrates ⓘ

4 carbohydrates are modelled in this entry.

In the following table, the Counts columns list the number of bonds (or angles) for which Mogul statistics could be retrieved, the number of bonds (or angles) that are observed in the model and the number of bonds (or angles) that are defined in the chemical component dictionary. The Link column lists molecule types, if any, to which the group is linked. The Z score for a bond length (or angle) is the number of standard deviations the observed value is removed from the expected value. A bond length (or angle) with $|Z| > 2$ is considered an outlier worth inspection. RMSZ is the root-mean-square of all Z scores of the bond lengths (or angles).

Mol	Type	Chain	Res	Link	Bond lengths			Bond angles		
					Counts	RMSZ	$\# Z > 2$	Counts	RMSZ	$\# Z > 2$
3	NAG	A	1575	1,3	14,14,15	0.45	0	15,19,21	0.84	0
3	NAG	A	1577	3	14,14,15	0.57	0	15,19,21	0.83	1 (6%)
3	MAN	A	1578	3	11,11,12	0.63	0	14,15,17	0.73	0
3	BMA	A	1579	3	11,11,12	0.68	0	14,15,17	1.60	2 (14%)

In the following table, the Chirals column lists the number of chiral outliers, the number of chiral centers analysed, the number of these observed in the model and the number defined in the chemical component dictionary. Similar counts are reported in the Torsion and Rings columns. '-' means no outliers of that kind were identified.

Mol	Type	Chain	Res	Link	Chirals	Torsions	Rings
3	NAG	A	1575	1,3	-	0/6/23/26	0/1/1/1
3	NAG	A	1577	3	-	0/6/23/26	0/1/1/1
3	MAN	A	1578	3	-	0/2/19/22	0/1/1/1
3	BMA	A	1579	3	-	0/2/19/22	0/1/1/1

There are no bond length outliers.

All (3) bond angle outliers are listed below:

Mol	Chain	Res	Type	Atoms	Z	Observed(°)	Ideal(°)
3	A	1577	NAG	C2-N2-C7	-2.55	119.76	123.04
3	A	1579	BMA	C1-O5-C5	2.50	115.43	112.25
3	A	1579	BMA	C1-C2-C3	5.00	115.46	109.54

There are no chirality outliers.

There are no torsion outliers.

There are no ring outliers.

3 monomers are involved in 3 short contacts:

Mol	Chain	Res	Type	Clashes	Symm-Clashes
3	A	1577	NAG	2	0
3	A	1578	MAN	2	0
3	A	1579	BMA	1	0

5.6 Ligand geometry [i](#)

3 ligands are modelled in this entry.

In the following table, the Counts columns list the number of bonds (or angles) for which Mogul statistics could be retrieved, the number of bonds (or angles) that are observed in the model and the number of bonds (or angles) that are defined in the chemical component dictionary. The Link column lists molecule types, if any, to which the group is linked. The Z score for a bond length (or angle) is the number of standard deviations the observed value is removed from the expected value. A bond length (or angle) with $|Z| > 2$ is considered an outlier worth inspection. RMSZ is the root-mean-square of all Z scores of the bond lengths (or angles).

Mol	Type	Chain	Res	Link	Bond lengths			Bond angles		
					Counts	RMSZ	$\# Z > 2$	Counts	RMSZ	$\# Z > 2$
2	SO4	A	1574	-	4,4,4	0.21	0	6,6,6	0.21	0
5	760	A	1580	-	24,25,25	6.61	14 (58%)	33,34,34	10.13	18 (54%)
4	NAG	A	1676	1	14,14,15	0.65	0	15,19,21	0.96	1 (6%)

In the following table, the Chirals column lists the number of chiral outliers, the number of chiral centers analysed, the number of these observed in the model and the number defined in the chemical component dictionary. Similar counts are reported in the Torsion and Rings columns. '-' means no outliers of that kind were identified.

Mol	Type	Chain	Res	Link	Chirals	Torsions	Rings
2	SO4	A	1574	-	-	0/0/0/0	0/0/0/0
5	760	A	1580	-	-	0/5/12/12	0/4/4/4
4	NAG	A	1676	1	-	0/6/23/26	0/1/1/1

All (14) bond length outliers are listed below:

Mol	Chain	Res	Type	Atoms	Z	Observed(Å)	Ideal(Å)
5	A	1580	760	C11-N10	-8.72	1.21	1.32
5	A	1580	760	C3-C2	-3.87	1.35	1.51
5	A	1580	760	C8-C9	2.66	1.42	1.36
5	A	1580	760	C6-C13	3.11	1.48	1.42
5	A	1580	760	C3-C4	3.49	1.64	1.51
5	A	1580	760	C17-C18	4.16	1.61	1.51
5	A	1580	760	C7-C6	5.35	1.48	1.36
5	A	1580	760	C4-C12	6.92	1.62	1.51
5	A	1580	760	C9-C14	7.26	1.55	1.41
5	A	1580	760	C12-C11	7.60	1.51	1.40
5	A	1580	760	C1-C11	9.64	1.66	1.50
5	A	1580	760	C13-C14	13.71	1.63	1.42
5	A	1580	760	C5-C12	14.54	1.60	1.39
5	A	1580	760	C5-C13	14.77	1.67	1.43

All (19) bond angle outliers are listed below:

Mol	Chain	Res	Type	Atoms	Z	Observed(°)	Ideal(°)
5	A	1580	760	C12-C5-C13	-49.87	84.67	120.38
5	A	1580	760	C6-C13-C14	-11.43	106.67	118.33
5	A	1580	760	C11-N10-C14	-9.71	106.98	117.64
5	A	1580	760	C1-C11-C12	-9.03	112.25	121.69
5	A	1580	760	C4-C12-C11	-7.04	115.72	121.05
5	A	1580	760	C4-C12-C5	-6.21	108.09	120.78
5	A	1580	760	C17-C18-C23	-4.30	111.35	120.90
5	A	1580	760	C8-C7-C6	-2.44	116.91	120.45
5	A	1580	760	C22-C23-C18	-2.36	116.90	120.65
4	A	1676	NAG	C2-N2-C7	-2.18	120.24	123.04
5	A	1580	760	C2-C1-C11	2.46	117.62	113.48
5	A	1580	760	C8-C9-C14	3.03	124.91	120.06
5	A	1580	760	C3-C4-C12	3.14	119.44	113.02
5	A	1580	760	C17-C18-C19	3.27	128.16	120.90
5	A	1580	760	C18-C17-N15	5.54	126.58	113.73
5	A	1580	760	C12-C5-N15	6.32	132.53	119.56
5	A	1580	760	C7-C6-C13	8.84	133.40	120.88
5	A	1580	760	C12-C11-N10	11.21	132.78	123.40

Continued on next page...

Continued from previous page...

Mol	Chain	Res	Type	Atoms	Z	Observed(°)	Ideal(°)
5	A	1580	760	C5-C13-C14	12.14	130.43	117.25

There are no chirality outliers.

There are no torsion outliers.

There are no ring outliers.

3 monomers are involved in 17 short contacts:

Mol	Chain	Res	Type	Clashes	Symm-Clashes
2	A	1574	SO4	3	0
5	A	1580	760	13	0
4	A	1676	NAG	2	0

5.7 Other polymers [i](#)

There are no such residues in this entry.

5.8 Polymer linkage issues [i](#)

There are no chain breaks in this entry.

6 Fit of model and data ⓘ

6.1 Protein, DNA and RNA chains ⓘ

In the following table, the column labelled ‘#RSRZ> 2’ contains the number (and percentage) of RSRZ outliers, followed by percent RSRZ outliers for the chain as percentile scores relative to all X-ray entries and entries of similar resolution. The OWAB column contains the minimum, median, 95th percentile and maximum values of the occupancy-weighted average B-factor per residue. The column labelled ‘Q< 0.9’ lists the number of (and percentage) of residues with an average occupancy less than 0.9.

Mol	Chain	Analysed	<RSRZ>	#RSRZ>2		OWAB(Å ²)	Q<0.9
1	A	537/585 (91%)	0.04	23 (4%)	39 38	21, 47, 80, 109	2 (0%)

All (23) RSRZ outliers are listed below:

Mol	Chain	Res	Type	RSRZ
1	A	137	THR	5.5
1	A	421	GLY	5.2
1	A	420	GLU	5.2
1	A	573	TRP	4.3
1	A	346	MET	4.3
1	A	347	THR	3.7
1	A	54	HIS	3.6
1	A	349	MET	3.5
1	A	351	THR	3.4
1	A	422	ASN	3.0
1	A	345	PRO	2.9
1	A	4	ARG	2.8
1	A	291	ASN	2.5
1	A	525	ASP	2.2
1	A	138	THR	2.2
1	A	344	ASP	2.2
1	A	423	PRO	2.1
1	A	140	GLY	2.1
1	A	157	ALA	2.1
1	A	424	GLY	2.1
1	A	147	ILE	2.1
1	A	148	TYR	2.0
1	A	350	LYS	2.0

6.2 Non-standard residues in protein, DNA, RNA chains [i](#)

There are no non-standard protein/DNA/RNA residues in this entry.

6.3 Carbohydrates [i](#)

In the following table, the Atoms column lists the number of modelled atoms in the group and the number defined in the chemical component dictionary. LLDF column lists the quality of electron density of the group with respect to its neighbouring residues in protein, DNA or RNA chains. The B-factors column lists the minimum, median, 95th percentile and maximum values of B factors of atoms in the group. The column labelled 'Q< 0.9' lists the number of atoms with occupancy less than 0.9.

Mol	Type	Chain	Res	Atoms	RSCC	RSR	LLDF	B-factors(Å ²)	Q<0.9
3	NAG	A	1575	14/15	0.91	0.21	0.60	58,60,67,71	0
3	BMA	A	1579	11/12	0.57	0.28	-	99,104,105,106	0
3	MAN	A	1578	11/12	0.75	0.39	-	94,98,100,103	0
3	NAG	A	1577	14/15	0.86	0.20	-	77,83,85,90	0

6.4 Ligands [i](#)

In the following table, the Atoms column lists the number of modelled atoms in the group and the number defined in the chemical component dictionary. LLDF column lists the quality of electron density of the group with respect to its neighbouring residues in protein, DNA or RNA chains. The B-factors column lists the minimum, median, 95th percentile and maximum values of B factors of atoms in the group. The column labelled 'Q< 0.9' lists the number of atoms with occupancy less than 0.9.

Mol	Type	Chain	Res	Atoms	RSCC	RSR	LLDF	B-factors(Å ²)	Q<0.9
5	760	A	1580	22/22	0.84	0.37	3.75	47,51,54,56	22
2	SO4	A	1574	5/5	0.88	0.29	2.43	67,67,71,71	0
4	NAG	A	1676	14/15	0.77	0.30	-	74,76,76,77	14

6.5 Other polymers [i](#)

There are no such residues in this entry.