



wwPDB X-ray Structure Validation Summary Report ⓘ

Nov 8, 2016 – 04:38 PM EST

PDB ID : 3DZY
Title : Intact PPAR gamma - RXR alpha Nuclear Receptor Complex on DNA bound with Rosiglitazone, 9-cis Retinoic Acid and NCOA2 Peptide
Authors : Chandra, V.; Huang, P.; Hamuro, Y.; Raghuram, S.; Wang, Y.; Burris, T.P.; Rastinejad, F.
Deposited on : 2008-07-30
Resolution : 3.10 Å(reported)

This is a wwPDB X-ray Structure Validation Summary Report for a publicly released PDB entry.

We welcome your comments at validation@mail.wwpdb.org

A user guide is available at

<http://wwpdb.org/validation/2016/XrayValidationReportHelp>

with specific help available everywhere you see the ⓘ symbol.

The following versions of software and data (see [references ⓘ](#)) were used in the production of this report:

MolProbity : 4.02b-467
Mogul : 1.7.1 (RC1), CSD as537be (2016)
Xtriage (Phenix) : 1.9-1692
EDS : rb-20028320
Percentile statistics : 20151230.v01 (using entries in the PDB archive December 30th 2015)
Refmac : 5.8.0135
CCP4 : 6.5.0
Ideal geometry (proteins) : Engh & Huber (2001)
Ideal geometry (DNA, RNA) : Parkinson et al. (1996)
Validation Pipeline (wwPDB-VP) : rb-20028320

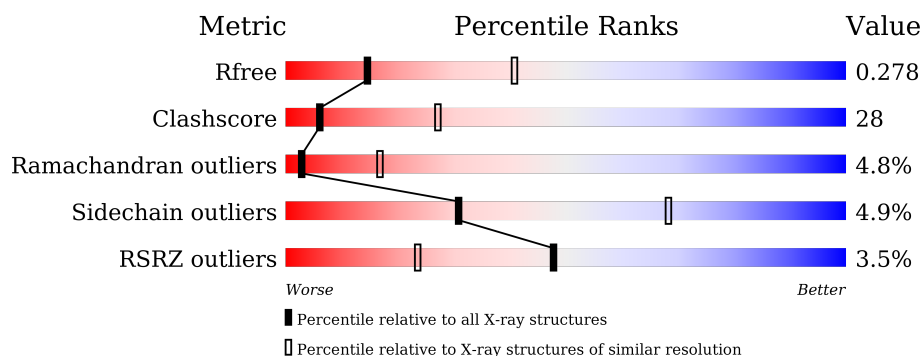
1 Overall quality at a glance ⓘ

The following experimental techniques were used to determine the structure:

X-RAY DIFFRACTION

The reported resolution of this entry is 3.10 Å.

Percentile scores (ranging between 0-100) for global validation metrics of the entry are shown in the following graphic. The table shows the number of entries on which the scores are based.



Metric	Whole archive (#Entries)	Similar resolution (#Entries, resolution range(Å))
R_{free}	91344	1114 (3.14-3.06)
Clashscore	102246	1222 (3.14-3.06)
Ramachandran outliers	100387	1174 (3.14-3.06)
Sidechain outliers	100360	1174 (3.14-3.06)
RSRZ outliers	91569	1119 (3.14-3.06)

The table below summarises the geometric issues observed across the polymeric chains and their fit to the electron density. The red, orange, yellow and green segments on the lower bar indicate the fraction of residues that contain outliers for ≥ 3 , 2, 1 and 0 types of geometric quality criteria. A grey segment represents the fraction of residues that are not modelled. The numeric value for each fraction is indicated below the corresponding segment, with a dot representing fractions $\leq 5\%$. The upper red bar (where present) indicates the fraction of residues that have poor fit to the electron density. The numeric value is given above the bar.

Mol	Chain	Length	Quality of chain
1	A	467	<div> <div>4%</div> <div>33% 28% . 35%</div> </div>
2	D	419	<div> <div>2%</div> <div>45% 34% 5% 16%</div> </div>
3	C	20	<div> <div>10% 75% 15%</div> </div>
4	F	20	<div> <div>5% 90% 5%</div> </div>
5	E	13	<div> <div>38% 38% 23%</div> </div>
5	G	13	<div> <div>46% 23% 31%</div> </div>

The following table lists non-polymeric compounds, carbohydrate monomers and non-standard residues in protein, DNA, RNA chains that are outliers for geometric or electron-density-fit criteria:

Mol	Type	Chain	Res	Chirality	Geometry	Clashes	Electron density
6	9CR	A	463	-	-	-	X

2 Entry composition

There are 8 unique types of molecules in this entry. The entry contains 6271 atoms, of which 0 are hydrogens and 0 are deuteriums.

In the tables below, the ZeroOcc column contains the number of atoms modelled with zero occupancy, the AltConf column contains the number of residues with at least one atom in alternate conformation and the Trace column contains the number of residues modelled with at most 2 atoms.

- Molecule 1 is a protein called Retinoic acid receptor RXR-alpha.

Mol	Chain	Residues	Atoms					ZeroOcc	AltConf	Trace
1	A	302	Total	C	N	O	S	0	0	0
			2407	1512	436	438	21			

There are 15 discrepancies between the modelled and reference sequences:

Chain	Residue	Modelled	Actual	Comment	Reference
A	-4	MET	-	EXPRESSION TAG	UNP P19793
A	-3	ALA	-	EXPRESSION TAG	UNP P19793
A	-2	HIS	-	EXPRESSION TAG	UNP P19793
A	-1	HIS	-	EXPRESSION TAG	UNP P19793
A	0	HIS	-	EXPRESSION TAG	UNP P19793
A	1	HIS	-	EXPRESSION TAG	UNP P19793
A	2	HIS	-	EXPRESSION TAG	UNP P19793
A	3	HIS	-	EXPRESSION TAG	UNP P19793
A	4	VAL	-	EXPRESSION TAG	UNP P19793
A	5	ASP	-	EXPRESSION TAG	UNP P19793
A	6	ASP	-	EXPRESSION TAG	UNP P19793
A	7	ASP	-	EXPRESSION TAG	UNP P19793
A	8	ASP	-	EXPRESSION TAG	UNP P19793
A	9	LYS	-	EXPRESSION TAG	UNP P19793
A	10	MET	-	EXPRESSION TAG	UNP P19793

- Molecule 2 is a protein called Peroxisome proliferator-activated receptor gamma.

Mol	Chain	Residues	Atoms					ZeroOcc	AltConf	Trace
2	D	354	Total	C	N	O	S	0	0	0
			2834	1809	485	519	21			

There are 15 discrepancies between the modelled and reference sequences:

Chain	Residue	Modelled	Actual	Comment	Reference
D	59	MET	-	EXPRESSION TAG	UNP P37231

Continued on next page...

Continued from previous page...

Chain	Residue	Modelled	Actual	Comment	Reference
D	60	ALA	-	EXPRESSION TAG	UNP P37231
D	61	HIS	-	EXPRESSION TAG	UNP P37231
D	62	HIS	-	EXPRESSION TAG	UNP P37231
D	63	HIS	-	EXPRESSION TAG	UNP P37231
D	64	HIS	-	EXPRESSION TAG	UNP P37231
D	65	HIS	-	EXPRESSION TAG	UNP P37231
D	66	HIS	-	EXPRESSION TAG	UNP P37231
D	67	VAL	-	EXPRESSION TAG	UNP P37231
D	68	ASP	-	EXPRESSION TAG	UNP P37231
D	69	ASP	-	EXPRESSION TAG	UNP P37231
D	70	ASP	-	EXPRESSION TAG	UNP P37231
D	71	ASP	-	EXPRESSION TAG	UNP P37231
D	72	LYS	-	EXPRESSION TAG	UNP P37231
D	73	MET	-	EXPRESSION TAG	UNP P37231

- Molecule 3 is a DNA chain called DNA (5'-D(*DCP*DAP*DAP*DAP*DCP*DTP*DAP*DG*GDP*DTP*DCP*DAP*DAP*DAP*GDP*GDP*DTP*DCP*DAP*DG)-3').

Mol	Chain	Residues	Atoms					ZeroOcc	AltConf	Trace
3	C	20	Total	C	N	O	P	0	0	0
			411	196	83	113	19			

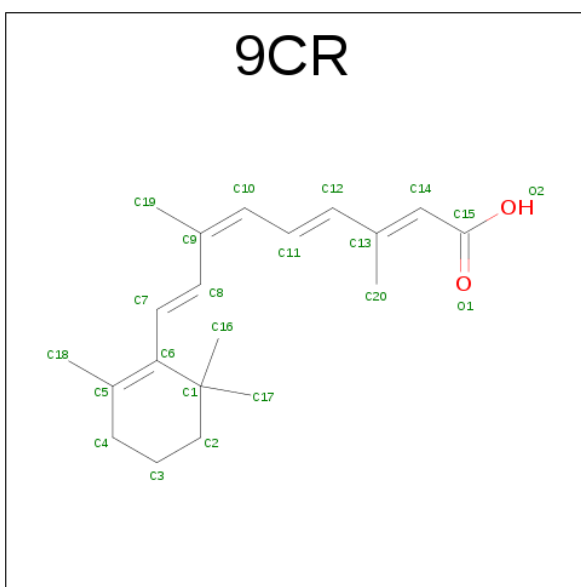
- Molecule 4 is a DNA chain called DNA (5'-D(*DCP*DTP*DGP*DAP*DCP*DCP*DTP*DT*DT*DT*GDP*DAP*DCP*DCP*DT*DT*DT*DT*DT*DT*DG)-3').

Mol	Chain	Residues	Atoms					ZeroOcc	AltConf	Trace
4	F	20	Total	C	N	O	P	0	0	0
			403	195	66	123	19			

- Molecule 5 is a protein called NCOA2 Peptide.

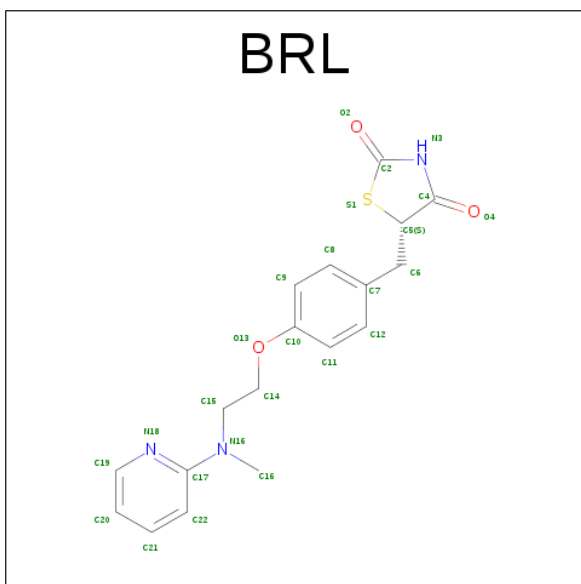
Mol	Chain	Residues	Atoms				ZeroOcc	AltConf	Trace
5	G	9	Total	C	N	O	0	0	0
			79	51	16	12			
5	E	10	Total	C	N	O	0	0	0
			86	54	17	15			

- Molecule 6 is (9CIS)-RETINOIC ACID (three-letter code: 9CR) (formula: C₂₀H₂₈O₂).



Mol	Chain	Residues	Atoms			ZeroOcc	AltConf
6	A	1	Total	C	O	0	0
			22	20	2		

- Molecule 7 is 2,4-THIAZOLIDINEDIONE, 5-[[4-[2-(METHYL-2-PYRIDINYLAMINO)ETHOXY]PHENYL]METHYL]-(9CL) (three-letter code: BRL) (formula: C₁₈H₁₉N₃O₃S).



Mol	Chain	Residues	Atoms					ZeroOcc	AltConf
7	D	1	Total	C	N	O	S	0	0
			25	18	3	3	1		

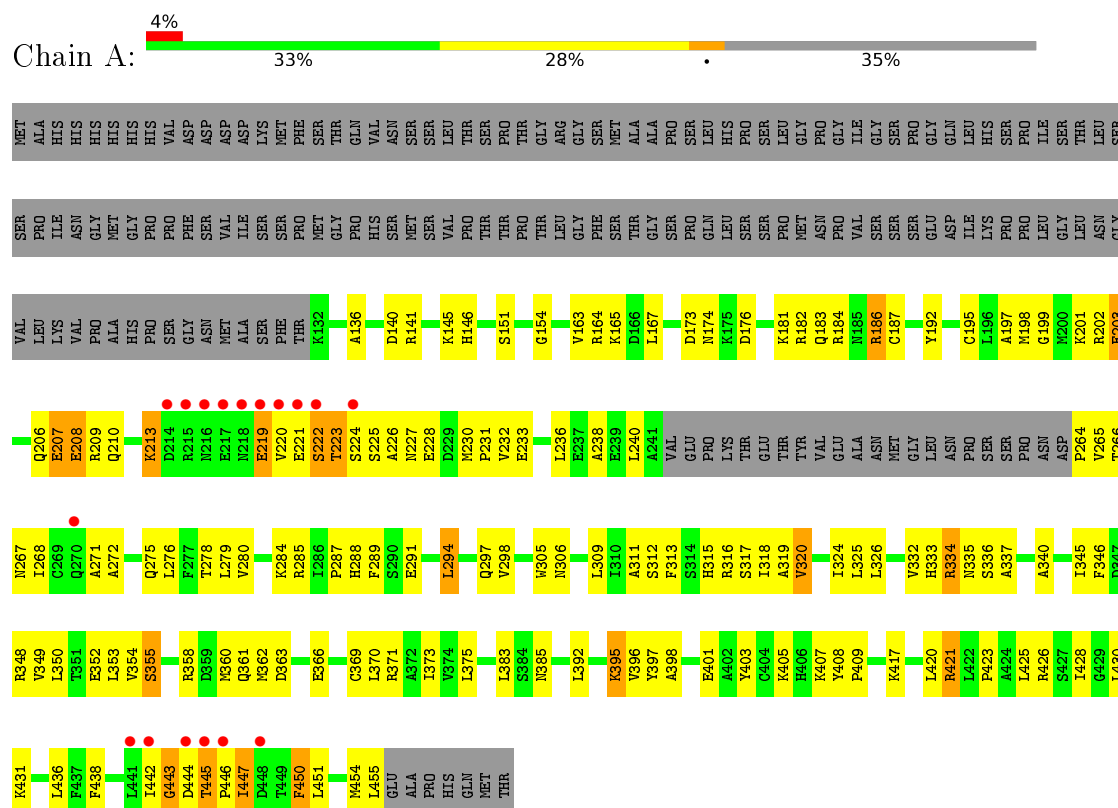
- Molecule 8 is ZINC ION (three-letter code: ZN) (formula: Zn).

Mol	Chain	Residues	Atoms		ZeroOcc	AltConf
8	A	2	Total 2	Zn 2	0	0
8	D	2	Total 2	Zn 2	0	0

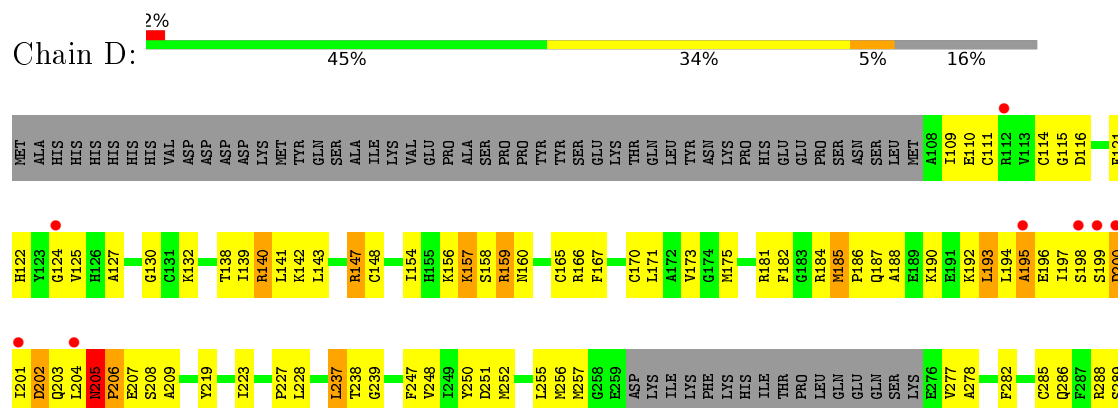
3 Residue-property plots

These plots are drawn for all protein, RNA and DNA chains in the entry. The first graphic for a chain summarises the proportions of errors displayed in the second graphic. The second graphic shows the sequence view annotated by issues in geometry and electron density. Residues are color-coded according to the number of geometric quality criteria for which they contain at least one outlier: green = 0, yellow = 1, orange = 2 and red = 3 or more. A red dot above a residue indicates a poor fit to the electron density ($RSRZ > 2$). Stretches of 2 or more consecutive residues without any outlier are shown as a green connector. Residues present in the sample, but not in the model, are shown in grey.

• Molecule 1: Retinoic acid receptor RXR-alpha

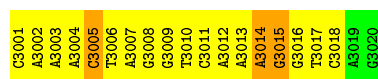
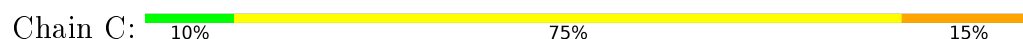


• Molecule 2: Peroxisome proliferator-activated receptor gamma

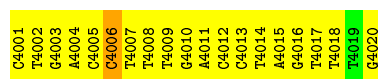




- Molecule 3: DNA (5'-D(*DCP*DAP*DAP*DAP*DCP*DTP*DAP*DGP*DGP*DTP*DCP*DAP*DAP*DAP*DGP*DGP*DTP*DCP*DAP*DG)-3')



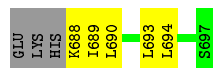
- Molecule 4: DNA (5'-D(*DCP*DTP*DGP*DAP*DCP*DCP*DTP*DTP*DTP*DGP*DAP*DCP*DCP*DTP*DAP*DGP*DTP*DTP*DTP*DG)-3')



- Molecule 5: NCOA2 Peptide



- Molecule 5: NCOA2 Peptide



4 Data and refinement statistics

Property	Value	Source
Space group	P 1 21 1	Depositor
Cell constants a, b, c, α , β , γ	63.80Å 146.51Å 67.22Å 90.00° 115.59° 90.00°	Depositor
Resolution (Å)	46.71 – 3.10 46.71 – 2.99	Depositor EDS
% Data completeness (in resolution range)	92.3 (46.71-3.10) 94.0 (46.71-2.99)	Depositor EDS
R_{merge}	0.10	Depositor
R_{sym}	(Not available)	Depositor
$\langle I/\sigma(I) \rangle$ ¹	1.91 (at 3.01Å)	Xtriage
Refinement program	CNS 1.2	Depositor
R, R_{free}	0.213 , 0.268 0.223 , 0.278	Depositor DCC
R_{free} test set	1894 reflections (9.68%)	DCC
Wilson B-factor (Å ²)	52.7	Xtriage
Anisotropy	0.454	Xtriage
Bulk solvent k_{sol} (e/Å ³), B_{sol} (Å ²)	0.32 , 74.3	EDS
L-test for twinning ²	$\langle L \rangle = 0.48$, $\langle L^2 \rangle = 0.31$	Xtriage
Estimated twinning fraction	0.027 for h,-k,-h-l	Xtriage
F_o, F_c correlation	0.92	EDS
Total number of atoms	6271	wwPDB-VP
Average B, all atoms (Å ²)	77.0	wwPDB-VP

Xtriage's analysis on translational NCS is as follows: *The largest off-origin peak in the Patterson function is 4.31% of the height of the origin peak. No significant pseudotranslation is detected.*

¹Intensities estimated from amplitudes.

²Theoretical values of $\langle |L| \rangle$, $\langle L^2 \rangle$ for acentric reflections are 0.5, 0.333 respectively for untwinned datasets, and 0.375, 0.2 for perfectly twinned datasets.

5 Model quality

5.1 Standard geometry

Bond lengths and bond angles in the following residue types are not validated in this section: 9CR, ZN, BRL

The Z score for a bond length (or angle) is the number of standard deviations the observed value is removed from the expected value. A bond length (or angle) with $|Z| > 5$ is considered an outlier worth inspection. RMSZ is the root-mean-square of all Z scores of the bond lengths (or angles).

Mol	Chain	Bond lengths		Bond angles	
		RMSZ	# Z >5	RMSZ	# Z >5
1	A	0.38	0/2448	0.66	0/3287
2	D	0.40	0/2882	0.64	0/3871
3	C	0.49	0/463	0.80	0/713
4	F	0.45	0/449	0.87	0/691
5	E	0.38	0/86	0.80	0/112
5	G	0.31	0/79	0.57	0/104
All	All	0.41	0/6407	0.68	0/8778

Chiral center outliers are detected by calculating the chiral volume of a chiral center and verifying if the center is modelled as a planar moiety or with the opposite hand. A planarity outlier is detected by checking planarity of atoms in a peptide group, atoms in a mainchain group or atoms of a sidechain that are expected to be planar.

Mol	Chain	#Chirality outliers	#Planarity outliers
3	C	0	3
4	F	0	1
All	All	0	4

There are no bond length outliers.

There are no bond angle outliers.

There are no chirality outliers.

All (4) planarity outliers are listed below:

Mol	Chain	Res	Type	Group
3	C	3005	DC	Sidechain
3	C	3014	DA	Sidechain
3	C	3015	DG	Sidechain
4	F	4006	DC	Sidechain

5.2 Too-close contacts [i](#)

In the following table, the Non-H and H(model) columns list the number of non-hydrogen atoms and hydrogen atoms in the chain respectively. The H(added) column lists the number of hydrogen atoms added and optimized by MolProbity. The Clashes column lists the number of clashes within the asymmetric unit, whereas Symm-Clashes lists symmetry related clashes.

Mol	Chain	Non-H	H(model)	H(added)	Clashes	Symm-Clashes
1	A	2407	0	2427	156	0
2	D	2834	0	2885	154	0
3	C	411	0	225	35	0
4	F	403	0	230	19	0
5	E	86	0	93	5	0
5	G	79	0	88	8	0
6	A	22	0	27	2	0
7	D	25	0	19	2	0
8	A	2	0	0	0	0
8	D	2	0	0	0	0
All	All	6271	0	5994	347	0

The all-atom clashscore is defined as the number of clashes found per 1000 atoms (including hydrogen atoms). The all-atom clashscore for this structure is 28.

The worst 5 of 347 close contacts within the same asymmetric unit are listed below, sorted by their clash magnitude.

Atom-1	Atom-2	Interatomic distance (Å)	Clash overlap (Å)
1:A:454:MET:HE1	5:G:690:LEU:HD12	1.42	1.01
2:D:193:LEU:HB2	2:D:197:ILE:HG12	1.44	1.00
2:D:357:ARG:HG2	2:D:357:ARG:HH11	1.24	0.98
2:D:125:VAL:HG11	2:D:175:MET:HG2	1.47	0.95
2:D:185:MET:HB3	2:D:188:ALA:HB2	1.51	0.93

There are no symmetry-related clashes.

5.3 Torsion angles [i](#)

5.3.1 Protein backbone [i](#)

In the following table, the Percentiles column shows the percent Ramachandran outliers of the chain as a percentile score with respect to all X-ray entries followed by that with respect to entries of similar resolution.

The Analysed column shows the number of residues for which the backbone conformation was

analysed, and the total number of residues.

Mol	Chain	Analysed	Favoured	Allowed	Outliers	Percentiles	
1	A	298/467 (64%)	234 (78%)	48 (16%)	16 (5%)	2	14
2	D	350/419 (84%)	280 (80%)	54 (15%)	16 (5%)	3	17
5	E	8/13 (62%)	7 (88%)	1 (12%)	0	100	100
5	G	7/13 (54%)	5 (71%)	2 (29%)	0	100	100
All	All	663/912 (73%)	526 (79%)	105 (16%)	32 (5%)	3	17

5 of 32 Ramachandran outliers are listed below:

Mol	Chain	Res	Type
1	A	222	SER
1	A	223	THR
2	D	195	ALA
1	A	181	LYS
1	A	208	GLU

5.3.2 Protein sidechains ⓘ

In the following table, the Percentiles column shows the percent sidechain outliers of the chain as a percentile score with respect to all X-ray entries followed by that with respect to entries of similar resolution.

The Analysed column shows the number of residues for which the sidechain conformation was analysed, and the total number of residues.

Mol	Chain	Analysed	Rotameric	Outliers	Percentiles	
1	A	262/405 (65%)	254 (97%)	8 (3%)	47	80
2	D	313/375 (84%)	292 (93%)	21 (7%)	20	56
5	E	10/13 (77%)	10 (100%)	0	100	100
5	G	9/13 (69%)	9 (100%)	0	100	100
All	All	594/806 (74%)	565 (95%)	29 (5%)	31	68

5 of 29 residues with a non-rotameric sidechain are listed below:

Mol	Chain	Res	Type
2	D	200	ASP
2	D	237	LEU
2	D	462	ASP
2	D	202	ASP

Continued on next page...

Continued from previous page...

Mol	Chain	Res	Type
2	D	304	PRO

Some sidechains can be flipped to improve hydrogen bonding and reduce clashes. 5 of 6 such sidechains are listed below:

Mol	Chain	Res	Type
1	A	267	ASN
2	D	437	GLN
2	D	160	ASN
1	A	227	ASN
2	D	205	ASN

5.3.3 RNA [i](#)

There are no RNA molecules in this entry.

5.4 Non-standard residues in protein, DNA, RNA chains [i](#)

There are no non-standard protein/DNA/RNA residues in this entry.

5.5 Carbohydrates [i](#)

There are no carbohydrates in this entry.

5.6 Ligand geometry [i](#)

Of 6 ligands modelled in this entry, 4 are monoatomic - leaving 2 for Mogul analysis.

In the following table, the Counts columns list the number of bonds (or angles) for which Mogul statistics could be retrieved, the number of bonds (or angles) that are observed in the model and the number of bonds (or angles) that are defined in the chemical component dictionary. The Link column lists molecule types, if any, to which the group is linked. The Z score for a bond length (or angle) is the number of standard deviations the observed value is removed from the expected value. A bond length (or angle) with $|Z| > 2$ is considered an outlier worth inspection. RMSZ is the root-mean-square of all Z scores of the bond lengths (or angles).

Mol	Type	Chain	Res	Link	Bond lengths			Bond angles		
					Counts	RMSZ	$\# Z > 2$	Counts	RMSZ	$\# Z > 2$
6	9CR	A	463	-	19,22,22	4.34	9 (47%)	26,30,30	2.38	10 (38%)
7	BRL	D	478	-	27,27,27	2.82	15 (55%)	31,36,36	2.79	10 (32%)

In the following table, the Chirals column lists the number of chiral outliers, the number of chiral centers analysed, the number of these observed in the model and the number defined in the chemical component dictionary. Similar counts are reported in the Torsion and Rings columns. '-' means no outliers of that kind were identified.

Mol	Type	Chain	Res	Link	Chirals	Torsions	Rings
6	9CR	A	463	-	-	0/13/32/32	0/1/1/1
7	BRL	D	478	-	-	0/14/26/26	0/3/3/3

The worst 5 of 24 bond length outliers are listed below:

Mol	Chain	Res	Type	Atoms	Z	Observed(Å)	Ideal(Å)
7	D	478	BRL	C2-N3	-3.78	1.32	1.37
7	D	478	BRL	O13-C10	2.29	1.43	1.37
7	D	478	BRL	C19-N18	2.34	1.39	1.34
7	D	478	BRL	C21-C20	2.40	1.44	1.38
7	D	478	BRL	C12-C11	2.41	1.43	1.38

The worst 5 of 20 bond angle outliers are listed below:

Mol	Chain	Res	Type	Atoms	Z	Observed(°)	Ideal(°)
7	D	478	BRL	C4-N3-C2	-8.09	112.79	118.32
6	A	463	9CR	C19-C9-C10	-4.55	116.28	122.89
7	D	478	BRL	C6-C5-S1	-4.04	108.67	112.97
7	D	478	BRL	O2-C2-N3	-3.75	121.34	125.68
7	D	478	BRL	C5-S1-C2	-3.61	90.86	92.90

There are no chirality outliers.

There are no torsion outliers.

There are no ring outliers.

2 monomers are involved in 4 short contacts:

Mol	Chain	Res	Type	Clashes	Symm-Clashes
6	A	463	9CR	2	0
7	D	478	BRL	2	0

5.7 Other polymers

There are no such residues in this entry.

5.8 Polymer linkage issues ⓘ

There are no chain breaks in this entry.

6 Fit of model and data ⓘ

6.1 Protein, DNA and RNA chains ⓘ

In the following table, the column labelled ‘#RSRZ> 2’ contains the number (and percentage) of RSRZ outliers, followed by percent RSRZ outliers for the chain as percentile scores relative to all X-ray entries and entries of similar resolution. The OWAB column contains the minimum, median, 95th percentile and maximum values of the occupancy-weighted average B-factor per residue. The column labelled ‘Q< 0.9’ lists the number of (and percentage) of residues with an average occupancy less than 0.9.

Mol	Chain	Analysed	<RSRZ>	#RSRZ>2	OWAB(Å ²)	Q<0.9
1	A	302/467 (64%)	0.09	17 (5%) 28 11	29, 76, 167, 200	0
2	D	354/419 (84%)	-0.02	8 (2%) 64 40	22, 65, 138, 196	0
3	C	20/20 (100%)	-0.23	0 100 100	42, 69, 89, 90	0
4	F	20/20 (100%)	-0.20	0 100 100	41, 71, 86, 87	0
5	E	10/13 (76%)	-0.12	0 100 100	48, 70, 123, 133	0
5	G	9/13 (69%)	0.42	0 100 100	90, 113, 148, 152	0
All	All	715/952 (75%)	0.02	25 (3%) 48 23	22, 71, 149, 200	0

The worst 5 of 25 RSRZ outliers are listed below:

Mol	Chain	Res	Type	RSRZ
1	A	216	ASN	7.5
1	A	219	GLU	5.9
1	A	215	ARG	5.4
1	A	217	GLU	4.9
1	A	221	GLU	4.3

6.2 Non-standard residues in protein, DNA, RNA chains ⓘ

There are no non-standard protein/DNA/RNA residues in this entry.

6.3 Carbohydrates ⓘ

There are no carbohydrates in this entry.

6.4 Ligands [i](#)

In the following table, the Atoms column lists the number of modelled atoms in the group and the number defined in the chemical component dictionary. LLDF column lists the quality of electron density of the group with respect to its neighbouring residues in protein, DNA or RNA chains. The B-factors column lists the minimum, median, 95th percentile and maximum values of B factors of atoms in the group. The column labelled 'Q< 0.9' lists the number of atoms with occupancy less than 0.9.

Mol	Type	Chain	Res	Atoms	RSCC	RSR	LLDF	B-factors(Å ²)	Q<0.9
6	9CR	A	463	22/22	0.91	0.58	5.61	75,92,102,103	0
7	BRL	D	478	25/25	0.93	0.25	0.13	58,62,64,66	0
8	ZN	D	7121	1/1	0.99	0.14	-0.75	63,63,63,63	0
8	ZN	A	7221	1/1	0.95	0.15	-0.89	60,60,60,60	0
8	ZN	A	7222	1/1	0.98	0.11	-1.56	52,52,52,52	0
8	ZN	D	7122	1/1	0.98	0.14	-	65,65,65,65	0

6.5 Other polymers [i](#)

There are no such residues in this entry.