



# Full wwPDB X-ray Structure Validation Report ⓘ

Feb 1, 2016 – 04:16 PM GMT

PDB ID : 4EBP  
Title : BlaC E166A Cefotaxime Acyl-Intermediate Complex  
Authors : Mire, J.A.; TB Structural Genomics Consortium (TBSGC)  
Deposited on : 2012-03-23  
Resolution : 2.29 Å(reported)

This is a Full wwPDB X-ray Structure Validation Report for a publicly released PDB entry.  
We welcome your comments at [validation@mail.wwpdb.org](mailto:validation@mail.wwpdb.org)  
A user guide is available at  
<http://wwpdb.org/validation/2016/XrayValidationReportHelp>  
with specific help available everywhere you see the ⓘ symbol.

---

The following versions of software and data (see [references ⓘ](#)) were used in the production of this report:

MolProbity : 4.02b-467  
Mogul : 1.7 (RC4), CSD as536be (2015)  
Xtriage (Phenix) : 1.9-1692  
EDS : rb-20026688  
Percentile statistics : 20151230.v01 (using entries in the PDB archive December 30th 2015)  
Refmac : 5.8.0135  
CCP4 : 6.5.0  
Ideal geometry (proteins) : Engh & Huber (2001)  
Ideal geometry (DNA, RNA) : Parkinson et al. (1996)  
Validation Pipeline (wwPDB-VP) : trunk26865

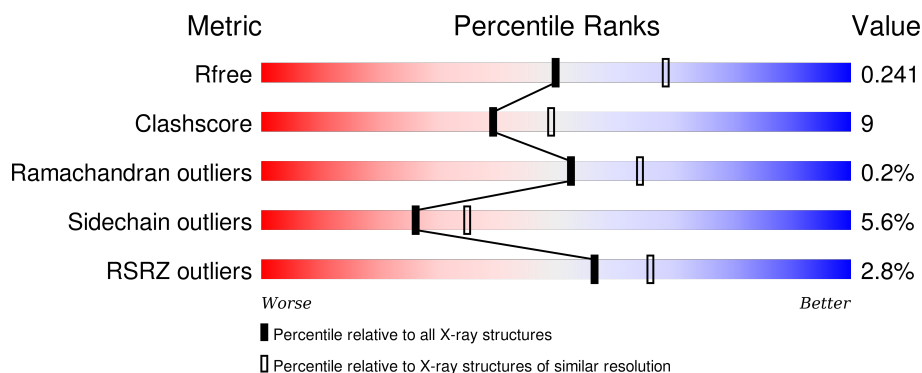
# 1 Overall quality at a glance ⓘ

The following experimental techniques were used to determine the structure:

## *X-RAY DIFFRACTION*

The reported resolution of this entry is 2.29 Å.

Percentile scores (ranging between 0-100) for global validation metrics of the entry are shown in the following graphic. The table shows the number of entries on which the scores are based.



Metric	Whole archive (#Entries)	Similar resolution (#Entries, resolution range(Å))
$R_{free}$	91344	3852 (2.30-2.30)
Clashscore	102246	4452 (2.30-2.30)
Ramachandran outliers	100387	4410 (2.30-2.30)
Sidechain outliers	100360	4409 (2.30-2.30)
RSRZ outliers	91569	3857 (2.30-2.30)

The table below summarises the geometric issues observed across the polymeric chains and their fit to the electron density. The red, orange, yellow and green segments on the lower bar indicate the fraction of residues that contain outliers for  $\geq 3$ , 2, 1 and 0 types of geometric quality criteria. A grey segment represents the fraction of residues that are not modelled. The numeric value for each fraction is indicated below the corresponding segment, with a dot representing fractions  $\leq 5\%$ . The upper red bar (where present) indicates the fraction of residues that have poor fit to the electron density. The numeric value is given above the bar.

Mol	Chain	Length	Quality of chain
1	A	265	<div> <div>3%</div> <div>88%</div> <div>12%</div> </div>
1	B	265	<div> <div>2%</div> <div>77%</div> <div>16%</div> <div>• •</div> </div>
1	C	265	<div> <div>3%</div> <div>74%</div> <div>23%</div> <div>• •</div> </div>
1	D	265	<div> <div>3%</div> <div>83%</div> <div>15%</div> <div>•</div> </div>

The following table lists non-polymeric compounds, carbohydrate monomers and non-standard

residues in protein, DNA, RNA chains that are outliers for geometric or electron-density-fit criteria:

Mol	Type	Chain	Res	Chirality	Geometry	Clashes	Electron density
3	PCZ	C	301	-	-	-	X

## 2 Entry composition

There are 4 unique types of molecules in this entry. The entry contains 7948 atoms, of which 0 are hydrogens and 0 are deuteriums.

In the tables below, the ZeroOcc column contains the number of atoms modelled with zero occupancy, the AltConf column contains the number of residues with at least one atom in alternate conformation and the Trace column contains the number of residues modelled with at most 2 atoms.

- Molecule 1 is a protein called Beta-lactamase.

Mol	Chain	Residues	Atoms					ZeroOcc	AltConf	Trace
1	A	265	Total	C	N	O	S	0	0	0
			1971	1234	348	383	6			
1	B	257	Total	C	N	O	S	0	0	0
			1895	1189	337	363	6			
1	C	259	Total	C	N	O	S	0	0	0
			1908	1196	337	369	6			
1	D	265	Total	C	N	O	S	0	0	0
			1956	1228	346	376	6			

There are 4 discrepancies between the modelled and reference sequences:

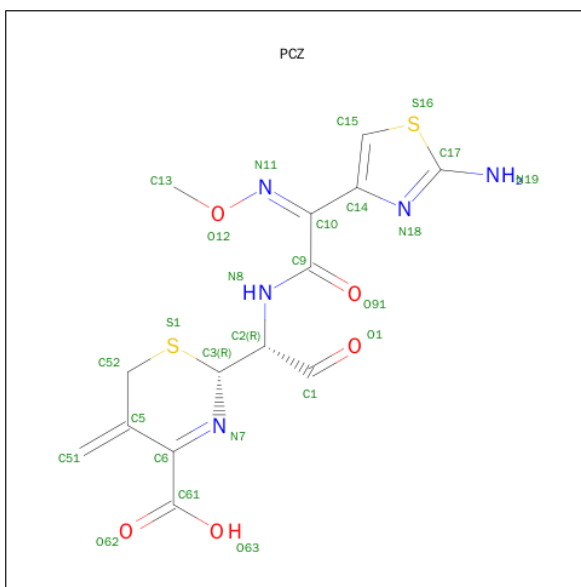
Chain	Residue	Modelled	Actual	Comment	Reference
A	166	ALA	GLU	ENGINEERED MUTATION	UNP P0C5C1
B	166	ALA	GLU	ENGINEERED MUTATION	UNP P0C5C1
C	166	ALA	GLU	ENGINEERED MUTATION	UNP P0C5C1
D	166	ALA	GLU	ENGINEERED MUTATION	UNP P0C5C1

- Molecule 2 is PHOSPHATE ION (three-letter code: PO4) (formula: O<sub>4</sub>P).



Mol	Chain	Residues	Atoms			ZeroOcc	AltConf
2	A	1	Total	O	P	0	0
			5	4	1		
2	A	1	Total	O	P	0	0
			5	4	1		
2	A	1	Total	O	P	0	0
			5	4	1		
2	A	1	Total	O	P	0	0
			5	4	1		
2	B	1	Total	O	P	0	0
			5	4	1		
2	C	1	Total	O	P	0	0
			5	4	1		
2	D	1	Total	O	P	0	0
			5	4	1		
2	D	1	Total	O	P	0	0
			5	4	1		
2	D	1	Total	O	P	0	0
			5	4	1		

- Molecule 3 is (2R)-2-[(1R)-1-{[(2Z)-2-(2-AMINO-1,3-THIAZOL-4-YL)-2-(METHOXYIMINO)ACETYL]AMINO}-2-OXOETHYL]-5-METHYLIDENE-5,6-DIHYDRO-2H-1,3-THIAZINE-4-CARBOXYLIC ACID (three-letter code: PCZ) (formula: C<sub>14</sub>H<sub>15</sub>N<sub>5</sub>O<sub>5</sub>S<sub>2</sub>).



Mol	Chain	Residues	Atoms					ZeroOcc	AltConf
3	B	1	Total	C	N	O	S	0	0
			26	14	5	5	2		
3	C	1	Total	C	N	O	S	0	0
			26	14	5	5	2		

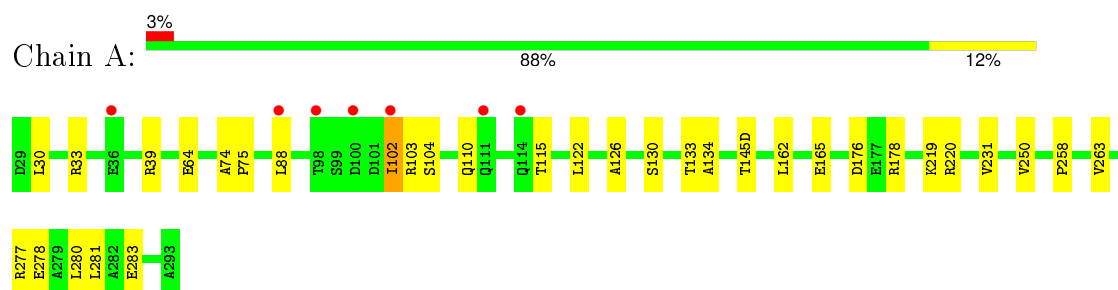
- Molecule 4 is water.

Mol	Chain	Residues	Atoms		ZeroOcc	AltConf
4	A	32	Total	O	0	0
			32	32		
4	B	37	Total	O	0	0
			37	37		
4	C	33	Total	O	0	0
			33	33		
4	D	19	Total	O	0	0
			19	19		

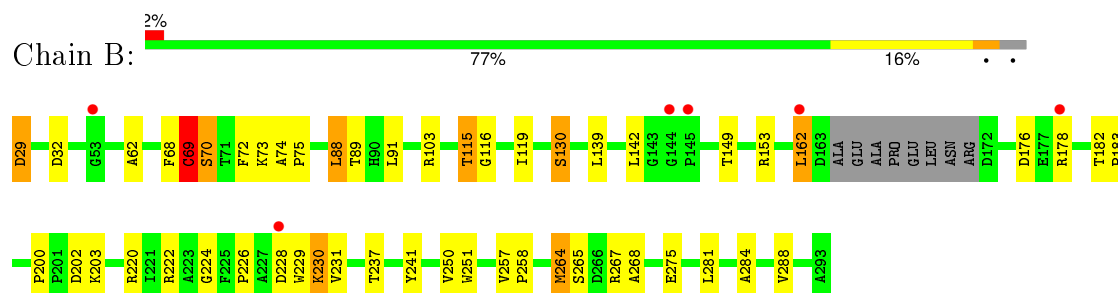
### 3 Residue-property plots [i](#)

These plots are drawn for all protein, RNA and DNA chains in the entry. The first graphic for a chain summarises the proportions of errors displayed in the second graphic. The second graphic shows the sequence view annotated by issues in geometry and electron density. Residues are color-coded according to the number of geometric quality criteria for which they contain at least one outlier: green = 0, yellow = 1, orange = 2 and red = 3 or more. A red dot above a residue indicates a poor fit to the electron density ( $RSRZ > 2$ ). Stretches of 2 or more consecutive residues without any outlier are shown as a green connector. Residues present in the sample, but not in the model, are shown in grey.

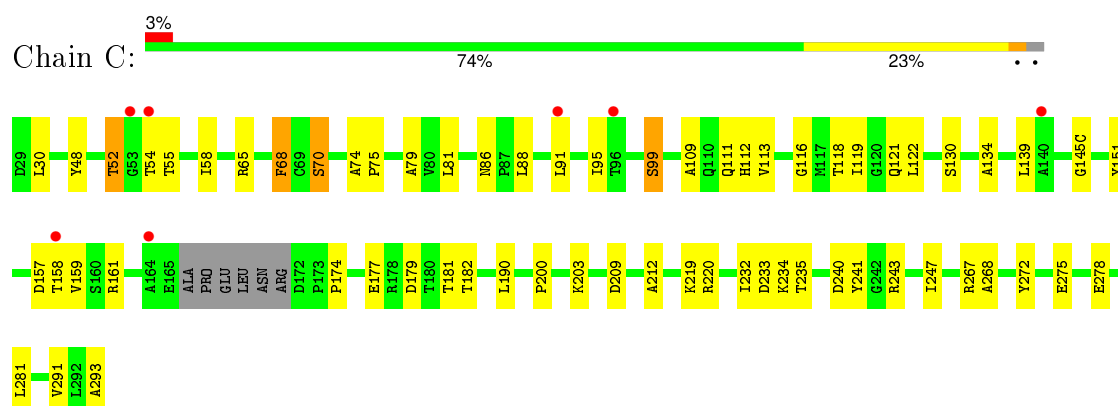
#### • Molecule 1: Beta-lactamase



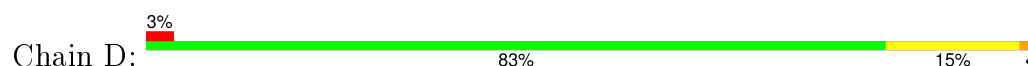
#### • Molecule 1: Beta-lactamase

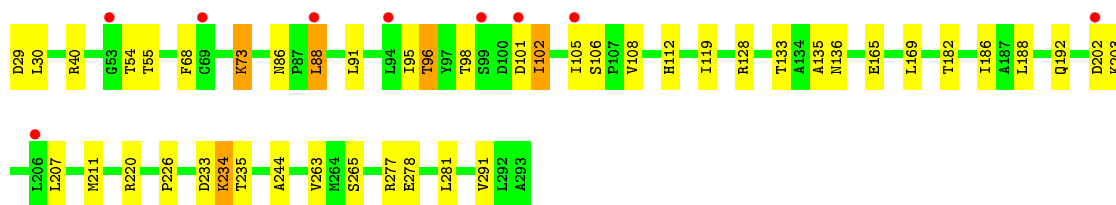


#### • Molecule 1: Beta-lactamase



#### • Molecule 1: Beta-lactamase







## 4 Data and refinement statistics

Property	Value	Source
Space group	P 1 21 1	Depositor
Cell constants a, b, c, $\alpha$ , $\beta$ , $\gamma$	78.82Å 96.15Å 107.09Å 90.00° 106.34° 90.00°	Depositor
Resolution (Å)	45.32 – 2.29 45.32 – 2.29	Depositor EDS
% Data completeness (in resolution range)	97.7 (45.32-2.29) 97.7 (45.32-2.29)	Depositor EDS
$R_{merge}$	0.11	Depositor
$R_{sym}$	(Not available)	Depositor
$\langle I/\sigma(I) \rangle$ <sup>1</sup>	1.62 (at 2.29Å)	Xtriage
Refinement program	PHENIX (phenix.refine: 1.7.3_928)	Depositor
R, $R_{free}$	0.211 , 0.240 0.208 , 0.241	Depositor DCC
$R_{free}$ test set	3419 reflections (5.33%)	DCC
Wilson B-factor (Å <sup>2</sup> )	38.0	Xtriage
Anisotropy	0.360	Xtriage
Bulk solvent $k_{sol}$ (e/Å <sup>3</sup> ), $B_{sol}$ (Å <sup>2</sup> )	0.37 , 42.1	EDS
Estimated twinning fraction	No twinning to report.	Xtriage
L-test for twinning <sup>2</sup>	$\langle  L  \rangle = 0.50$ , $\langle L^2 \rangle = 0.33$	Xtriage
Outliers	0 of 67577 reflections	Xtriage
$F_o, F_c$ correlation	0.95	EDS
Total number of atoms	7948	wwPDB-VP
Average B, all atoms (Å <sup>2</sup> )	45.0	wwPDB-VP

Xtriage's analysis on translational NCS is as follows: *The largest off-origin peak in the Patterson function is 7.26% of the height of the origin peak. No significant pseudotranslation is detected.*

<sup>1</sup>Intensities estimated from amplitudes.

<sup>2</sup>Theoretical values of  $\langle |L| \rangle$ ,  $\langle L^2 \rangle$  for acentric reflections are 0.5, 0.375 respectively for untwinned datasets, and 0.333, 0.2 for perfectly twinned datasets.

## 5 Model quality

### 5.1 Standard geometry

Bond lengths and bond angles in the following residue types are not validated in this section: PCZ, PO4

The Z score for a bond length (or angle) is the number of standard deviations the observed value is removed from the expected value. A bond length (or angle) with  $|Z| > 5$  is considered an outlier worth inspection. RMSZ is the root-mean-square of all Z scores of the bond lengths (or angles).

Mol	Chain	Bond lengths		Bond angles	
		RMSZ	$\# Z  > 5$	RMSZ	$\# Z  > 5$
1	A	0.30	0/2010	0.50	0/2747
1	B	0.32	0/1931	0.54	4/2637 (0.2%)
1	C	0.30	0/1945	0.50	1/2658 (0.0%)
1	D	0.29	0/1995	0.42	0/2727
All	All	0.30	0/7881	0.49	5/10769 (0.0%)

Chiral center outliers are detected by calculating the chiral volume of a chiral center and verifying if the center is modelled as a planar moiety or with the opposite hand. A planarity outlier is detected by checking planarity of atoms in a peptide group, atoms in a mainchain group or atoms of a sidechain that are expected to be planar.

Mol	Chain	#Chirality outliers	#Planarity outliers
1	B	0	1
1	C	0	1
All	All	0	2

There are no bond length outliers.

All (5) bond angle outliers are listed below:

Mol	Chain	Res	Type	Atoms	Z	Observed(°)	Ideal(°)
1	B	69	CYS	O-C-N	-10.97	105.14	122.70
1	C	70	SER	O-C-N	-10.85	105.35	122.70
1	B	69	CYS	C-N-CA	8.52	143.01	121.70
1	B	70	SER	O-C-N	-7.00	111.50	122.70
1	B	69	CYS	CA-C-N	6.60	131.72	117.20

There are no chirality outliers.

All (2) planarity outliers are listed below:

Mol	Chain	Res	Type	Group
1	B	69	CYS	Mainchain
1	C	70	SER	Mainchain

## 5.2 Too-close contacts ⓘ

In the following table, the Non-H and H(model) columns list the number of non-hydrogen atoms and hydrogen atoms in the chain respectively. The H(added) column lists the number of hydrogen atoms added and optimized by MolProbity. The Clashes column lists the number of clashes within the asymmetric unit, whereas Symm-Clashes lists symmetry related clashes.

Mol	Chain	Non-H	H(model)	H(added)	Clashes	Symm-Clashes
1	A	1971	0	1931	25	0
1	B	1895	0	1864	35	0
1	C	1908	0	1858	42	0
1	D	1956	0	1918	30	0
2	A	20	0	0	1	0
2	B	5	0	0	0	0
2	C	5	0	0	0	0
2	D	15	0	0	1	0
3	B	26	0	13	5	0
3	C	26	0	13	8	0
4	A	32	0	0	1	0
4	B	37	0	0	0	0
4	C	33	0	0	1	0
4	D	19	0	0	0	0
All	All	7948	0	7597	137	0

The all-atom clashscore is defined as the number of clashes found per 1000 atoms (including hydrogen atoms). The all-atom clashscore for this structure is 9.

All (137) close contacts within the same asymmetric unit are listed below, sorted by their clash magnitude.

Atom-1	Atom-2	Interatomic distance (Å)	Clash overlap (Å)
1:A:102:ILE:HG22	1:A:133:THR:HG21	1.20	1.19
3:C:301:PCZ:H512	3:C:301:PCZ:O63	1.57	1.03
3:B:301:PCZ:O63	3:B:301:PCZ:H512	1.58	1.02
1:B:29:ASP:N	1:B:29:ASP:OD1	1.98	0.93
1:A:102:ILE:CG2	1:A:133:THR:HG21	2.05	0.84
1:D:102:ILE:HB	1:D:133:THR:OG1	1.78	0.84
1:A:102:ILE:HG22	1:A:133:THR:CG2	2.06	0.79
1:C:118:THR:H	1:C:121:GLN:HE21	1.32	0.77

*Continued on next page...*

*Continued from previous page...*

Atom-1	Atom-2	Interatomic distance (Å)	Clash overlap (Å)
1:C:200:PRO:HG2	1:C:203:LYS:HG3	1.65	0.76
1:B:29:ASP:HA	1:B:32:ASP:OD2	1.87	0.75
1:D:234:LYS:NZ	1:D:235:THR:O	2.23	0.72
1:C:74:ALA:HB3	1:C:75:PRO:CD	2.20	0.70
1:B:228:ASP:OD1	1:B:229:TRP:HD1	1.74	0.70
1:C:220:ARG:HG2	1:C:281:LEU:HD12	1.74	0.70
3:B:301:PCZ:H15	3:B:301:PCZ:O12	1.93	0.68
1:A:263:VAL:HG12	1:A:281:LEU:HD22	1.75	0.67
1:C:240:ASP:OD1	3:C:301:PCZ:N19	2.28	0.66
3:C:301:PCZ:C51	3:C:301:PCZ:O63	2.35	0.65
1:C:74:ALA:HB3	1:C:75:PRO:HD3	1.78	0.65
1:B:115:THR:HG22	1:B:116:GLY:O	1.97	0.65
1:C:68:PHE:HB2	1:C:179:ASP:O	1.97	0.64
3:B:301:PCZ:C15	3:B:301:PCZ:O12	2.46	0.64
1:A:220:ARG:HD3	1:A:281:LEU:HD12	1.78	0.64
1:C:52:THR:HG23	1:C:55:THR:OG1	1.97	0.64
1:D:102:ILE:O	1:D:102:ILE:CG1	2.45	0.63
1:B:74:ALA:HB3	1:B:75:PRO:CD	2.28	0.63
1:C:157:ASP:HB2	4:C:419:HOH:O	1.99	0.63
1:A:103:ARG:O	1:A:104:SER:HB3	1.99	0.62
1:D:98:THR:O	1:D:101:ASP:HB2	2.01	0.61
1:C:190:LEU:HD22	1:C:247:ILE:HD12	1.82	0.61
1:A:176:ASP:OD2	1:A:178:ARG:NH2	2.33	0.61
1:D:102:ILE:HD12	1:D:106:SER:HB2	1.83	0.61
1:D:220:ARG:HE	1:D:278:GLU:HG2	1.66	0.60
1:B:74:ALA:HB3	1:B:75:PRO:HD3	1.85	0.58
1:A:102:ILE:HA	1:A:133:THR:OG1	2.03	0.58
1:D:30:LEU:HD22	1:D:291:VAL:HG21	1.86	0.58
1:A:110:GLN:OE1	1:B:103:ARG:HD2	2.04	0.57
1:C:118:THR:H	1:C:121:GLN:NE2	2.04	0.55
1:D:91:LEU:HA	1:D:119:ILE:HB	1.89	0.55
1:C:267:ARG:HD3	1:C:275:GLU:O	2.06	0.55
1:D:102:ILE:O	1:D:102:ILE:HG12	2.06	0.54
3:C:301:PCZ:O12	3:C:301:PCZ:N18	2.40	0.54
1:B:228:ASP:OD1	1:B:229:TRP:CD1	2.61	0.53
1:C:109:ALA:C	1:C:111:GLN:H	2.11	0.53
1:B:228:ASP:OD1	1:B:229:TRP:N	2.42	0.52
1:C:157:ASP:C	1:C:157:ASP:OD1	2.47	0.52
1:D:95:ILE:HG22	1:D:96:THR:N	2.24	0.52
1:C:86:ASN:O	1:C:203:LYS:NZ	2.37	0.51
1:A:219:LYS:NZ	4:A:423:HOH:O	2.21	0.51

*Continued on next page...*

*Continued from previous page...*

Atom-1	Atom-2	Interatomic distance (Å)	Clash overlap (Å)
1:A:145(D):THR:HB	1:A:162:LEU:O	2.11	0.51
1:C:139:LEU:O	1:C:145(C):GLY:HA3	2.11	0.50
3:B:301:PCZ:O63	3:B:301:PCZ:C51	2.36	0.50
1:B:139:LEU:O	1:B:142:LEU:HB2	2.11	0.50
1:D:263:VAL:HG12	1:D:281:LEU:HD22	1.93	0.50
1:C:118:THR:N	1:C:121:GLN:HE21	2.06	0.50
1:A:64:GLU:OE1	2:A:304:PO4:O4	2.29	0.50
1:C:212:ALA:HA	1:C:232:ILE:HG22	1.93	0.50
1:D:128:ARG:NH1	2:D:302:PO4:O4	2.45	0.50
1:D:182:THR:O	1:D:186:ILE:HG22	2.11	0.50
1:C:234:LYS:NZ	1:C:235:THR:O	2.45	0.49
1:D:91:LEU:HD23	1:D:119:ILE:HG22	1.93	0.49
1:C:112:HIS:O	1:C:116:GLY:N	2.43	0.49
1:B:176:ASP:OD2	1:B:178:ARG:HG3	2.12	0.49
1:A:33:ARG:NH1	1:C:293:ALA:O	2.44	0.48
1:C:240:ASP:O	1:C:243:ARG:HD2	2.13	0.48
1:B:91:LEU:HA	1:B:119:ILE:HB	1.95	0.48
1:D:73:LYS:HE3	1:D:135:ALA:HB2	1.96	0.48
1:C:220:ARG:HE	1:C:278:GLU:HG2	1.78	0.48
1:C:174:PRO:HG3	1:C:268:ALA:HB1	1.95	0.47
1:C:240:ASP:CG	3:C:301:PCZ:N19	2.68	0.47
1:B:231:VAL:HG22	1:B:250:VAL:HG12	1.96	0.47
1:D:136:ASN:OD1	1:D:165:GLU:HB2	2.14	0.47
1:C:118:THR:HG23	1:C:121:GLN:HE21	1.78	0.47
1:A:277:ARG:HH11	1:A:277:ARG:HG3	1.79	0.47
1:B:241:TYR:HB3	1:B:268:ALA:HA	1.96	0.47
1:B:200:PRO:HG2	1:B:203:LYS:HD2	1.96	0.47
1:D:165:GLU:HA	1:D:169:LEU:HD23	1.95	0.47
1:B:183:PRO:HG3	1:B:264:MET:HG3	1.96	0.47
3:C:301:PCZ:H15	3:C:301:PCZ:O91	2.16	0.46
1:C:52:THR:CG2	1:C:55:THR:OG1	2.63	0.46
1:B:226:PRO:HB2	1:B:228:ASP:OD1	2.16	0.46
1:A:263:VAL:CG1	1:A:281:LEU:HD22	2.46	0.46
1:A:250:VAL:O	1:A:258:PRO:HA	2.15	0.46
1:D:220:ARG:HG2	1:D:281:LEU:HD12	1.97	0.46
1:B:230:LYS:HG2	1:B:251:TRP:CE3	2.51	0.45
1:C:79:ALA:HB2	1:C:151:TYR:CD1	2.51	0.45
1:C:65:ARG:HD2	1:C:177:GLU:HG2	1.98	0.45
1:D:244:ALA:O	1:D:265:SER:OG	2.23	0.45
1:B:222:ARG:NH2	1:B:226:PRO:O	2.50	0.45
1:C:240:ASP:CG	3:C:301:PCZ:H191	2.21	0.45

*Continued on next page...*

*Continued from previous page...*

Atom-1	Atom-2	Interatomic distance (Å)	Clash overlap (Å)
1:B:224:GLY:O	1:D:226:PRO:HG3	2.17	0.45
1:B:202:ASP:OD1	1:B:203:LYS:N	2.50	0.44
1:B:74:ALA:N	1:B:75:PRO:HD2	2.31	0.44
1:C:241:TYR:HB3	1:C:268:ALA:HA	1.99	0.44
1:C:240:ASP:OD2	1:C:272:TYR:CE1	2.70	0.44
1:B:250:VAL:O	1:B:258:PRO:HA	2.17	0.44
1:B:88:LEU:HD12	1:B:88:LEU:HA	1.89	0.44
1:A:74:ALA:HB3	1:A:75:PRO:CD	2.47	0.44
1:B:162:LEU:CD1	1:B:162:LEU:N	2.81	0.43
1:B:62:ALA:O	1:B:182:THR:HB	2.18	0.43
1:A:30:LEU:HD12	1:A:30:LEU:HA	1.89	0.43
1:B:72:PHE:O	1:B:75:PRO:HG2	2.19	0.43
1:C:118:THR:HG23	1:C:121:GLN:NE2	2.34	0.43
1:A:231:VAL:HG22	1:A:250:VAL:HG12	2.00	0.43
1:C:99:SER:O	1:D:105:ILE:HG12	2.18	0.43
1:C:181:THR:OG1	1:C:182:THR:N	2.52	0.43
1:C:91:LEU:HA	1:C:119:ILE:HB	2.01	0.43
1:C:30:LEU:HD22	1:C:291:VAL:HG21	2.01	0.42
1:A:277:ARG:NH1	1:A:277:ARG:HG3	2.35	0.42
1:C:48:TYR:HA	1:C:58:ILE:O	2.19	0.42
1:B:237:THR:HG1	3:B:301:PCZ:C61	2.33	0.42
1:D:102:ILE:O	1:D:102:ILE:HG13	2.19	0.42
1:B:73:LYS:NZ	1:B:130:SER:O	2.53	0.42
1:B:149:THR:O	1:B:153:ARG:HG2	2.20	0.42
1:B:257:VAL:HA	1:B:258:PRO:HD3	1.90	0.42
1:C:109:ALA:C	1:C:111:GLN:N	2.73	0.41
1:C:247:ILE:HG13	1:C:247:ILE:O	2.19	0.41
1:D:88:LEU:HD13	1:D:203:LYS:HE2	2.01	0.41
1:D:108:VAL:O	1:D:112:HIS:HD2	2.03	0.41
1:B:267:ARG:NH2	1:B:275:GLU:O	2.36	0.41
1:D:188:LEU:O	1:D:192:GLN:HG3	2.21	0.41
1:D:202:ASP:OD1	1:D:203:LYS:N	2.53	0.41
1:B:220:ARG:HG2	1:B:281:LEU:HD12	2.02	0.41
1:A:122:LEU:HD22	1:A:134:ALA:HA	2.02	0.41
1:A:88:LEU:HA	1:A:88:LEU:HD23	1.80	0.41
1:A:126:ALA:O	1:A:130:SER:HA	2.20	0.41
1:C:81:LEU:O	1:C:203:LYS:NZ	2.50	0.41
1:D:88:LEU:HA	1:D:88:LEU:HD12	1.80	0.41
1:C:122:LEU:HD22	1:C:134:ALA:HA	2.01	0.41
1:D:207:LEU:O	1:D:211:MET:HG3	2.21	0.41
1:A:102:ILE:CA	1:A:133:THR:OG1	2.67	0.41

*Continued on next page...*

Continued from previous page...

Atom-1	Atom-2	Interatomic distance (Å)	Clash overlap (Å)
1:A:103:ARG:O	1:A:104:SER:CB	2.66	0.41
3:C:301:PCZ:C15	3:C:301:PCZ:O91	2.68	0.40
1:B:74:ALA:CB	1:B:75:PRO:CD	2.95	0.40
1:D:86:ASN:O	1:D:203:LYS:NZ	2.51	0.40
1:D:95:ILE:CG2	1:D:96:THR:N	2.84	0.40
1:B:284:ALA:O	1:B:288:VAL:HG23	2.21	0.40

There are no symmetry-related clashes.

## 5.3 Torsion angles [i](#)

### 5.3.1 Protein backbone [i](#)

In the following table, the Percentiles column shows the percent Ramachandran outliers of the chain as a percentile score with respect to all X-ray entries followed by that with respect to entries of similar resolution.

The Analysed column shows the number of residues for which the backbone conformation was analysed, and the total number of residues.

Mol	Chain	Analysed	Favoured	Allowed	Outliers	Percentiles	
1	A	263/265 (99%)	258 (98%)	5 (2%)	0	100	100
1	B	253/265 (96%)	244 (96%)	7 (3%)	2 (1%)	24	27
1	C	255/265 (96%)	246 (96%)	9 (4%)	0	100	100
1	D	263/265 (99%)	255 (97%)	8 (3%)	0	100	100
All	All	1034/1060 (98%)	1003 (97%)	29 (3%)	2 (0%)	52	64

All (2) Ramachandran outliers are listed below:

Mol	Chain	Res	Type
1	B	70	SER
1	B	69	CYS

### 5.3.2 Protein sidechains [i](#)

In the following table, the Percentiles column shows the percent sidechain outliers of the chain as a percentile score with respect to all X-ray entries followed by that with respect to entries of similar resolution.

The Analysed column shows the number of residues for which the sidechain conformation was analysed, and the total number of residues.

Mol	Chain	Analysed	Rotameric	Outliers	Percentiles	
1	A	198/201 (98%)	191 (96%)	7 (4%)	43	58
1	B	189/201 (94%)	179 (95%)	10 (5%)	28	37
1	C	189/201 (94%)	175 (93%)	14 (7%)	17	21
1	D	194/201 (96%)	182 (94%)	12 (6%)	23	30
All	All	770/804 (96%)	727 (94%)	43 (6%)	26	35

All (43) residues with a non-rotameric sidechain are listed below:

Mol	Chain	Res	Type
1	A	39	ARG
1	A	102	ILE
1	A	115	THR
1	A	165	GLU
1	A	278	GLU
1	A	280	LEU
1	A	283	GLU
1	B	29	ASP
1	B	68	PHE
1	B	88	LEU
1	B	89	THR
1	B	115	THR
1	B	130	SER
1	B	162	LEU
1	B	230	LYS
1	B	264	MET
1	B	265	SER
1	C	52	THR
1	C	54	THR
1	C	68	PHE
1	C	88	LEU
1	C	95	ILE
1	C	99	SER
1	C	113	VAL
1	C	130	SER
1	C	158	THR
1	C	159	VAL
1	C	161	ARG
1	C	209	ASP
1	C	219	LYS

*Continued on next page...*



*Continued from previous page...*

Mol	Chain	Res	Type
1	C	233	ASP
1	D	29	ASP
1	D	40	ARG
1	D	54	THR
1	D	55	THR
1	D	68	PHE
1	D	73	LYS
1	D	88	LEU
1	D	96	THR
1	D	102	ILE
1	D	233	ASP
1	D	234	LYS
1	D	277	ARG

Some sidechains can be flipped to improve hydrogen bonding and reduce clashes. All (3) such sidechains are listed below:

Mol	Chain	Res	Type
1	C	121	GLN
1	C	184	HIS
1	D	112	HIS

### 5.3.3 RNA [i](#)

There are no RNA molecules in this entry.

## 5.4 Non-standard residues in protein, DNA, RNA chains [i](#)

There are no non-standard protein/DNA/RNA residues in this entry.

## 5.5 Carbohydrates [i](#)

There are no carbohydrates in this entry.

## 5.6 Ligand geometry [i](#)

11 ligands are modelled in this entry.

In the following table, the Counts columns list the number of bonds (or angles) for which Mogul statistics could be retrieved, the number of bonds (or angles) that are observed in the model and

the number of bonds (or angles) that are defined in the chemical component dictionary. The Link column lists molecule types, if any, to which the group is linked. The Z score for a bond length (or angle) is the number of standard deviations the observed value is removed from the expected value. A bond length (or angle) with  $|Z| > 2$  is considered an outlier worth inspection. RMSZ is the root-mean-square of all Z scores of the bond lengths (or angles).

Mol	Type	Chain	Res	Link	Bond lengths			Bond angles		
					Counts	RMSZ	$\# Z  > 2$	Counts	RMSZ	$\# Z  > 2$
2	PO4	A	301	-	4,4,4	0.53	0	6,6,6	0.27	0
2	PO4	A	302	-	4,4,4	0.45	0	6,6,6	0.28	0
2	PO4	A	303	-	4,4,4	0.44	0	6,6,6	0.27	0
2	PO4	A	304	-	4,4,4	2.01	3 (75%)	6,6,6	0.27	0
3	PCZ	B	301	1	16,27,27	2.68	6 (37%)	12,37,37	4.00	4 (33%)
2	PO4	B	302	-	4,4,4	0.42	0	6,6,6	0.27	0
3	PCZ	C	301	1	16,27,27	2.68	6 (37%)	12,37,37	4.04	4 (33%)
2	PO4	C	302	-	4,4,4	0.44	0	6,6,6	0.27	0
2	PO4	D	301	-	4,4,4	0.49	0	6,6,6	0.28	0
2	PO4	D	302	-	4,4,4	0.41	0	6,6,6	0.27	0
2	PO4	D	303	-	4,4,4	2.02	3 (75%)	6,6,6	0.27	0

In the following table, the Chirals column lists the number of chiral outliers, the number of chiral centers analysed, the number of these observed in the model and the number defined in the chemical component dictionary. Similar counts are reported in the Torsion and Rings columns. '-' means no outliers of that kind were identified.

Mol	Type	Chain	Res	Link	Chirals	Torsions	Rings
2	PO4	A	301	-	-	0/0/0/0	0/0/0/0
2	PO4	A	302	-	-	0/0/0/0	0/0/0/0
2	PO4	A	303	-	-	0/0/0/0	0/0/0/0
2	PO4	A	304	-	-	0/0/0/0	0/0/0/0
3	PCZ	B	301	1	-	0/10/38/38	0/1/2/2
2	PO4	B	302	-	-	0/0/0/0	0/0/0/0
3	PCZ	C	301	1	-	0/10/38/38	0/1/2/2
2	PO4	C	302	-	-	0/0/0/0	0/0/0/0
2	PO4	D	301	-	-	0/0/0/0	0/0/0/0
2	PO4	D	302	-	-	0/0/0/0	0/0/0/0
2	PO4	D	303	-	-	0/0/0/0	0/0/0/0

All (18) bond length outliers are listed below:

Mol	Chain	Res	Type	Atoms	Z	Observed(Å)	Ideal(Å)
3	B	301	PCZ	C14-C10	-5.18	1.39	1.48
3	C	301	PCZ	C14-C10	-5.13	1.39	1.48
3	C	301	PCZ	C52-S1	-3.77	1.73	1.82

*Continued on next page...*

*Continued from previous page...*

Mol	Chain	Res	Type	Atoms	Z	Observed(Å)	Ideal(Å)
3	B	301	PCZ	C52-S1	-3.75	1.73	1.82
3	B	301	PCZ	O12-N11	-2.17	1.36	1.40
3	C	301	PCZ	O12-N11	-2.11	1.36	1.40
2	D	303	PO4	P-O1	2.07	1.61	1.52
2	A	304	PO4	P-O1	2.07	1.61	1.52
2	A	304	PO4	P-O2	2.24	1.61	1.53
2	D	303	PO4	P-O2	2.24	1.61	1.53
2	A	304	PO4	P-O3	2.24	1.61	1.53
2	D	303	PO4	P-O3	2.25	1.61	1.53
3	C	301	PCZ	C10-N11	2.44	1.33	1.29
3	B	301	PCZ	C10-N11	2.46	1.33	1.29
3	B	301	PCZ	C51-C5	2.88	1.39	1.32
3	C	301	PCZ	C51-C5	2.89	1.39	1.32
3	B	301	PCZ	C15-S16	6.87	1.81	1.70
3	C	301	PCZ	C15-S16	6.92	1.81	1.70

All (8) bond angle outliers are listed below:

Mol	Chain	Res	Type	Atoms	Z	Observed(°)	Ideal(°)
3	C	301	PCZ	C14-C15-S16	-7.94	102.04	111.79
3	B	301	PCZ	C14-C15-S16	-7.88	102.11	111.79
3	B	301	PCZ	C5-C52-S1	4.72	121.88	111.92
3	C	301	PCZ	C5-C52-S1	4.75	121.95	111.92
3	C	301	PCZ	C52-S1-C3	6.88	107.62	94.36
3	B	301	PCZ	C52-S1-C3	6.90	107.67	94.36
3	B	301	PCZ	O12-N11-C10	7.45	120.00	111.11
3	C	301	PCZ	O12-N11-C10	7.60	120.17	111.11

There are no chirality outliers.

There are no torsion outliers.

There are no ring outliers.

4 monomers are involved in 15 short contacts:

Mol	Chain	Res	Type	Clashes	Symm-Clashes
2	A	304	PO4	1	0
3	B	301	PCZ	5	0
3	C	301	PCZ	8	0
2	D	302	PO4	1	0

## 5.7 Other polymers

There are no such residues in this entry.

## 5.8 Polymer linkage issues

There are no chain breaks in this entry.

## 6 Fit of model and data

### 6.1 Protein, DNA and RNA chains

In the following table, the column labelled ‘#RSRZ> 2’ contains the number (and percentage) of RSRZ outliers, followed by percent RSRZ outliers for the chain as percentile scores relative to all X-ray entries and entries of similar resolution. The OWAB column contains the minimum, median, 95<sup>th</sup> percentile and maximum values of the occupancy-weighted average B-factor per residue. The column labelled ‘Q< 0.9’ lists the number of (and percentage) of residues with an average occupancy less than 0.9.

Mol	Chain	Analysed	<RSRZ>	#RSRZ>2	OWAB(Å <sup>2</sup> )	Q<0.9
1	A	265/265 (100%)	0.18	7 (2%) 59 68	26, 39, 63, 79	0
1	B	257/265 (96%)	0.06	6 (2%) 64 72	29, 41, 68, 92	0
1	C	259/265 (97%)	0.14	7 (2%) 58 67	27, 41, 77, 84	0
1	D	265/265 (100%)	0.18	9 (3%) 49 58	32, 46, 71, 85	0
All	All	1046/1060 (98%)	0.14	29 (2%) 56 66	26, 42, 70, 92	0

All (29) RSRZ outliers are listed below:

Mol	Chain	Res	Type	RSRZ
1	D	94	LEU	3.8
1	B	144	GLY	3.7
1	B	162	LEU	3.6
1	A	102	ILE	3.4
1	A	114	GLN	3.3
1	B	228	ASP	3.0
1	B	53	GLY	3.0
1	C	53	GLY	2.9
1	D	88	LEU	2.7
1	A	98	THR	2.7
1	C	164	ALA	2.6
1	B	178	ARG	2.6
1	D	99	SER	2.5
1	C	140	ALA	2.5
1	D	105	ILE	2.5
1	C	96	THR	2.5
1	A	36	GLU	2.4
1	C	91	LEU	2.4
1	D	202	ASP	2.4
1	D	69	CYS	2.3
1	A	111	GLN	2.3

*Continued on next page...*

*Continued from previous page...*

Mol	Chain	Res	Type	RSRZ
1	D	53	GLY	2.2
1	A	88	LEU	2.2
1	B	145	PRO	2.2
1	C	54	THR	2.2
1	D	101	ASP	2.1
1	D	206	LEU	2.1
1	A	100	ASP	2.0
1	C	158	THR	2.0

## 6.2 Non-standard residues in protein, DNA, RNA chains [i](#)

There are no non-standard protein/DNA/RNA residues in this entry.

## 6.3 Carbohydrates [i](#)

There are no carbohydrates in this entry.

## 6.4 Ligands [i](#)

In the following table, the Atoms column lists the number of modelled atoms in the group and the number defined in the chemical component dictionary. LLDF column lists the quality of electron density of the group with respect to its neighbouring residues in protein, DNA or RNA chains. The B-factors column lists the minimum, median, 95<sup>th</sup> percentile and maximum values of B factors of atoms in the group. The column labelled 'Q< 0.9' lists the number of atoms with occupancy less than 0.9.

Mol	Type	Chain	Res	Atoms	RSCC	RSR	LLDF	B-factors( $\text{\AA}^2$ )	Q<0.9
3	PCZ	C	301	26/26	0.84	0.36	4.75	31,46,69,154	26
3	PCZ	B	301	26/26	0.85	0.24	1.79	43,61,90,153	0
2	PO4	D	301	5/5	0.93	0.20	1.70	64,71,73,75	0
2	PO4	A	302	5/5	0.95	0.20	1.17	77,77,82,82	0
2	PO4	A	301	5/5	0.99	0.16	0.40	40,40,44,51	0
2	PO4	D	303	5/5	0.88	0.30	-	85,108,141,141	0
2	PO4	C	302	5/5	0.96	0.12	-	82,82,83,83	0
2	PO4	D	302	5/5	0.91	0.18	-	90,90,92,93	0
2	PO4	A	304	5/5	0.83	0.31	-	92,93,138,139	0
2	PO4	B	302	5/5	0.95	0.14	-	64,69,71,74	0
2	PO4	A	303	5/5	0.96	0.20	-	74,77,78,78	0

## 6.5 Other polymers

There are no such residues in this entry.