



Full wwPDB X-ray Structure Validation Report ⓘ

Feb 1, 2016 – 08:23 AM GMT

PDB ID : 3EGW
Title : The crystal structure of the NarGHI mutant NarH - C16A
Authors : Bertero, M.G.; Rothery, R.A.; Weiner, J.H.; Strynadka, N.C.J.
Deposited on : 2008-09-11
Resolution : 1.90 Å(reported)

This is a Full wwPDB X-ray Structure Validation Report for a publicly released PDB entry.
We welcome your comments at validation@mail.wwpdb.org
A user guide is available at
<http://wwpdb.org/validation/2016/XrayValidationReportHelp>
with specific help available everywhere you see the ⓘ symbol.

The following versions of software and data (see [references ⓘ](#)) were used in the production of this report:

MolProbity : 4.02b-467
Mogul : 1.7 (RC4), CSD as536be (2015)
Xtriage (Phenix) : 1.9-1692
EDS : rb-20026688
Percentile statistics : 20151230.v01 (using entries in the PDB archive December 30th 2015)
Refmac : 5.8.0135
CCP4 : 6.5.0
Ideal geometry (proteins) : Engh & Huber (2001)
Ideal geometry (DNA, RNA) : Parkinson et al. (1996)
Validation Pipeline (wwPDB-VP) : trunk26865

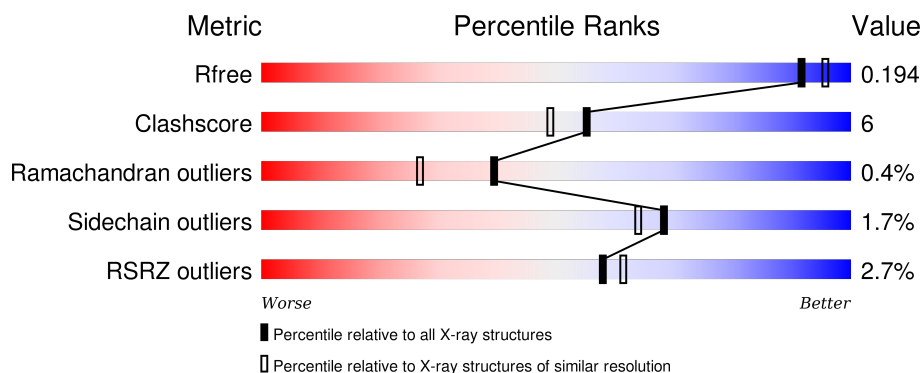
1 Overall quality at a glance

The following experimental techniques were used to determine the structure:

X-RAY DIFFRACTION

The reported resolution of this entry is 1.90 Å.

Percentile scores (ranging between 0-100) for global validation metrics of the entry are shown in the following graphic. The table shows the number of entries on which the scores are based.



Metric	Whole archive (#Entries)	Similar resolution (#Entries, resolution range(Å))
R_{free}	91344	4755 (1.90-1.90)
Clashscore	102246	5398 (1.90-1.90)
Ramachandran outliers	100387	5338 (1.90-1.90)
Sidechain outliers	100360	5339 (1.90-1.90)
RSRZ outliers	91569	4766 (1.90-1.90)

The table below summarises the geometric issues observed across the polymeric chains and their fit to the electron density. The red, orange, yellow and green segments on the lower bar indicate the fraction of residues that contain outliers for ≥ 3 , 2, 1 and 0 types of geometric quality criteria. A grey segment represents the fraction of residues that are not modelled. The numeric value for each fraction is indicated below the corresponding segment, with a dot representing fractions $\leq 5\%$. The upper red bar (where present) indicates the fraction of residues that have poor fit to the electron density. The numeric value is given above the bar.

Mol	Chain	Length	Quality of chain
1	A	1244	<div> <div>3%</div> <div>84%</div> <div>15%</div> </div>
2	B	509	<div> <div>2%</div> <div>90%</div> <div>9%</div> </div>
3	C	225	<div> <div>4%</div> <div>81%</div> <div>18%</div> </div>

The following table lists non-polymeric compounds, carbohydrate monomers and non-standard residues in protein, DNA, RNA chains that are outliers for geometric or electron-density-fit criteria:

Mol	Type	Chain	Res	Chirality	Geometry	Clashes	Electron density
7	SF4	B	803	-	-	X	-
9	3PH	B	806	X	-	-	X

2 Entry composition

There are 12 unique types of molecules in this entry. The entry contains 17504 atoms, of which 0 are hydrogens and 0 are deuteriums.

In the tables below, the ZeroOcc column contains the number of atoms modelled with zero occupancy, the AltConf column contains the number of residues with at least one atom in alternate conformation and the Trace column contains the number of residues modelled with at most 2 atoms.

- Molecule 1 is a protein called Respiratory nitrate reductase 1 alpha chain.

Mol	Chain	Residues	Atoms					ZeroOcc	AltConf	Trace
1	A	1244	Total	C	N	O	S	0	0	0
			9870	6232	1731	1859	48			

There are 2 discrepancies between the modelled and reference sequences:

Chain	Residue	Modelled	Actual	Comment	Reference
A	10	ALA	PHE	CONFLICT	UNP P09152
A	362	ALA	ASP	CONFLICT	UNP P09152

- Molecule 2 is a protein called Respiratory nitrate reductase 1 beta chain.

Mol	Chain	Residues	Atoms					ZeroOcc	AltConf	Trace
2	B	509	Total	C	N	O	S	0	0	0
			4050	2562	701	756	31			

There is a discrepancy between the modelled and reference sequences:

Chain	Residue	Modelled	Actual	Comment	Reference
B	16	ALA	CYS	ENGINEERED	UNP P11349

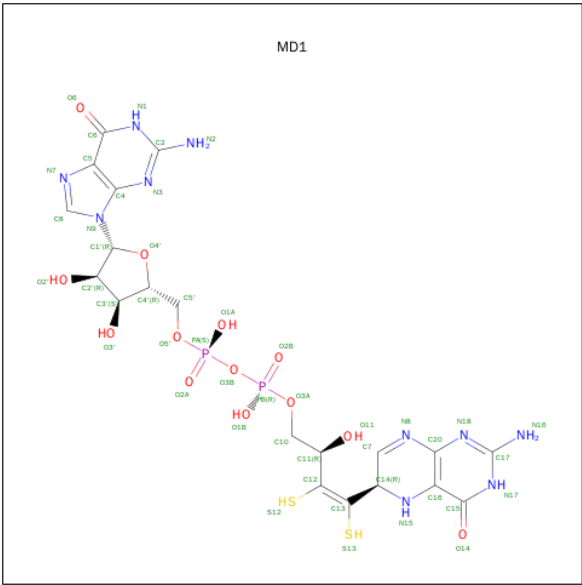
- Molecule 3 is a protein called Respiratory nitrate reductase 1 gamma chain.

Mol	Chain	Residues	Atoms					ZeroOcc	AltConf	Trace
3	C	225	Total	C	N	O	S	0	0	0
			1791	1188	303	286	14			

There are 2 discrepancies between the modelled and reference sequences:

Chain	Residue	Modelled	Actual	Comment	Reference
C	77	ALA	TYR	CONFLICT	UNP P11350
C	78	ALA	GLU	CONFLICT	UNP P11350

- Molecule 4 is PHOSPHORIC ACID 4-(2-AMINO-4-OXO-3,4,5,6,-TETRAHYDRO-PTE RIDIN-6-YL)-2-HYDROXY-3,4-DIMERCAPTO-BUT-3-EN-YL ESTER GUANYLATE ESTER (three-letter code: MD1) (formula: C₂₀H₂₆N₁₀O₁₃P₂S₂).

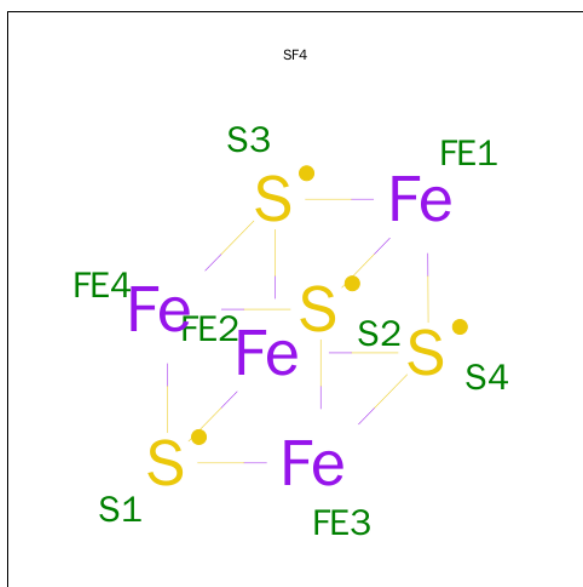


Mol	Chain	Residues	Atoms						ZeroOcc	AltConf
5	A	1	Total	C	N	O	P	S	0	0
			47	20	10	13	2	2		

- Molecule 6 is MOLYBDENUM(VI) ION (three-letter code: 6MO) (formula: Mo).

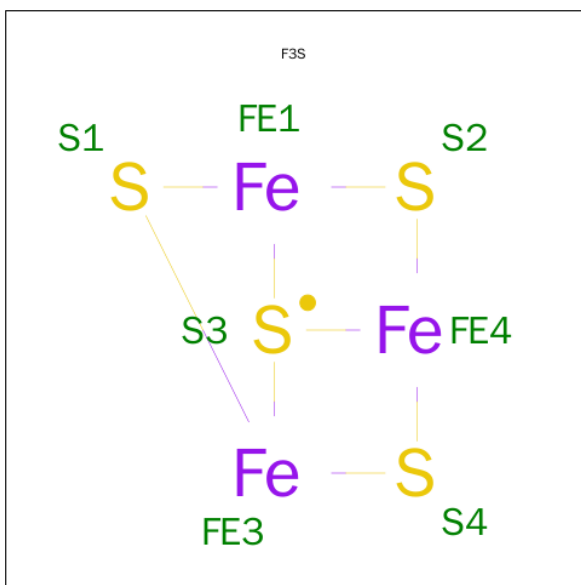
Mol	Chain	Residues	Atoms		ZeroOcc	AltConf
6	A	1	Total	Mo	0	0
			1	1		

- Molecule 7 is IRON/SULFUR CLUSTER (three-letter code: SF4) (formula: Fe₄S₄).



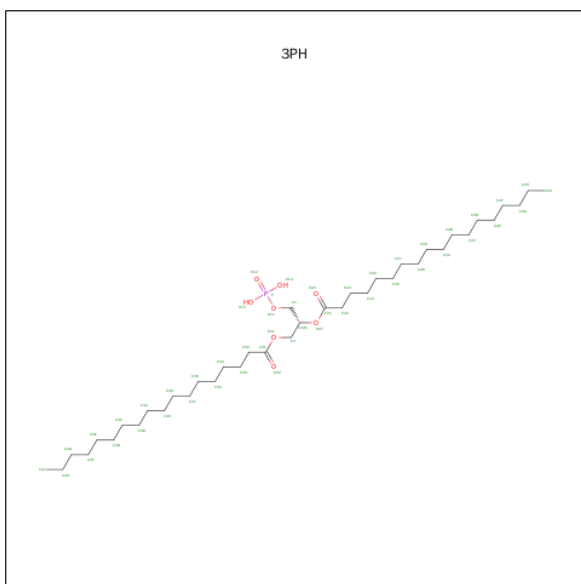
Mol	Chain	Residues	Atoms			ZeroOcc	AltConf
7	A	1	Total	Fe	S	0	0
			8	4	4		
7	B	1	Total	Fe	S	0	0
			8	4	4		
7	B	1	Total	Fe	S	0	0
			8	4	4		

- Molecule 8 is FE3-S4 CLUSTER (three-letter code: F3S) (formula: Fe₃S₄).



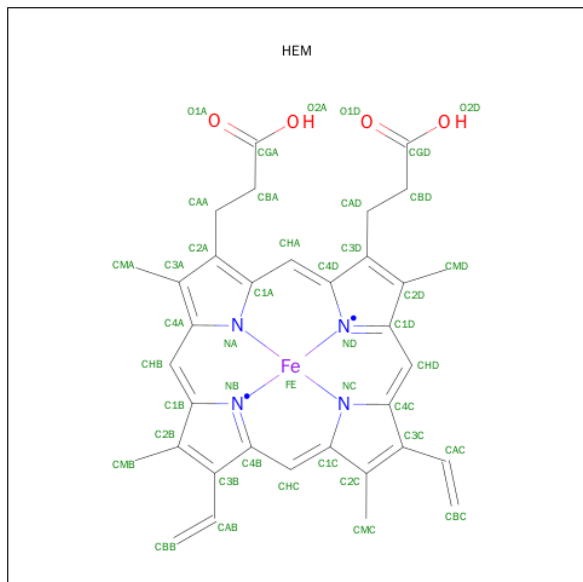
Mol	Chain	Residues	Atoms			ZeroOcc	AltConf
8	B	1	Total	Fe	S	0	0
			7	3	4		
8	B	1	Total	Fe	S	0	0
			7	3	4		

- Molecule 9 is 1,2-DIACYL-GLYCEROL-3-SN-PHOSPHATE (three-letter code: 3PH) (formula: C₃₉H₇₇O₈P).



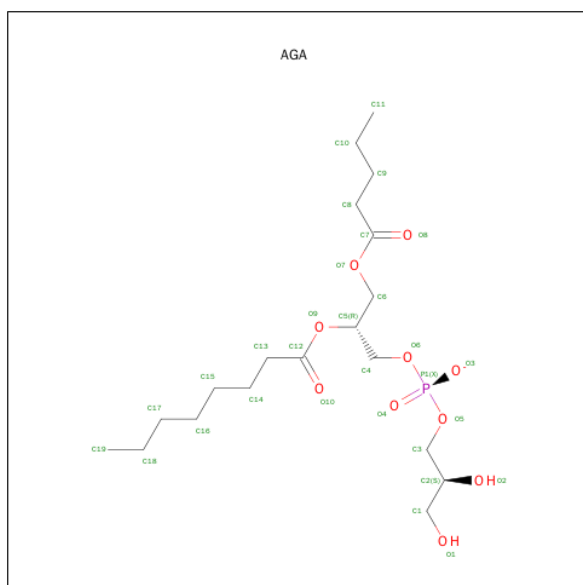
Mol	Chain	Residues	Atoms				ZeroOcc	AltConf
9	B	1	Total	C	O	P	0	0
			18	9	8	1		

- Molecule 10 is PROTOPORPHYRIN IX CONTAINING FE (three-letter code: HEM) (formula: $C_{34}H_{32}FeN_4O_4$).



Mol	Chain	Residues	Atoms					ZeroOcc	AltConf
10	C	1	Total	C	Fe	N	O	0	0
			43	34	1	4	4		
10	C	1	Total	C	Fe	N	O	0	0
			43	34	1	4	4		

- Molecule 11 is (1S)-2-{{[(2S)-2,3-DIHYDROXYPROPYL]OXY}(HYDROXY)PHOSPHORYL]OXY}-1-[(PENTANOYLOXY)METHYL]ETHYL OCTANOATE (three-letter code: AGA) (formula: $C_{19}H_{36}O_{10}P$).



Mol	Chain	Residues	Atoms				ZeroOcc	AltConf
11	C	1	Total	C	O	P	0	0
			30	19	10	1		

- Molecule 12 is water.

Mol	Chain	Residues	Atoms		ZeroOcc	AltConf
12	A	912	Total	O	0	0
			912	912		
12	B	512	Total	O	0	0
			512	512		
12	C	102	Total	O	0	0
			102	102		

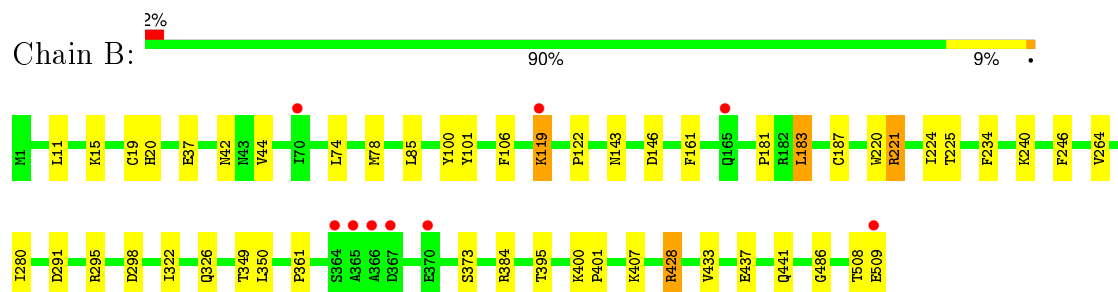
3 Residue-property plots

These plots are drawn for all protein, RNA and DNA chains in the entry. The first graphic for a chain summarises the proportions of errors displayed in the second graphic. The second graphic shows the sequence view annotated by issues in geometry and electron density. Residues are color-coded according to the number of geometric quality criteria for which they contain at least one outlier: green = 0, yellow = 1, orange = 2 and red = 3 or more. A red dot above a residue indicates a poor fit to the electron density ($RSRZ > 2$). Stretches of 2 or more consecutive residues without any outlier are shown as a green connector. Residues present in the sample, but not in the model, are shown in grey.

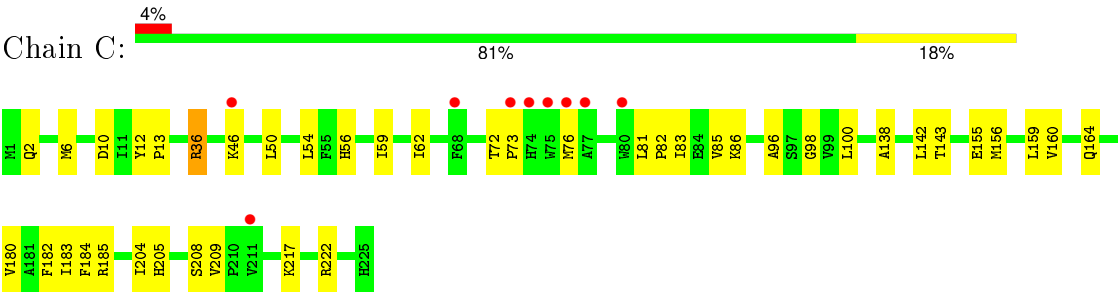
- Molecule 1: Respiratory nitrate reductase 1 alpha chain



- Molecule 2: Respiratory nitrate reductase 1 beta chain



- Molecule 3: Respiratory nitrate reductase 1 gamma chain



4 Data and refinement statistics

Property	Value	Source
Space group	C 2 2 21	Depositor
Cell constants a, b, c, α , β , γ	154.00 Å 241.68 Å 139.47 Å 90.00° 90.00° 90.00°	Depositor
Resolution (Å)	19.99 – 1.90 19.99 – 1.90	Depositor EDS
% Data completeness (in resolution range)	96.0 (19.99-1.90) 96.2 (19.99-1.90)	Depositor EDS
R_{merge}	0.06	Depositor
R_{sym}	(Not available)	Depositor
$\langle I/\sigma(I) \rangle$ ¹	3.52 (at 1.90 Å)	Xtriage
Refinement program	CNS 1.1	Depositor
R, R_{free}	0.175 , 0.196 0.173 , 0.194	Depositor DCC
R_{free} test set	9737 reflections (5.25%)	DCC
Wilson B-factor (Å ²)	16.7	Xtriage
Anisotropy	0.817	Xtriage
Bulk solvent k_{sol} (e/Å ³), B_{sol} (Å ²)	0.37 , 59.5	EDS
Estimated twinning fraction	No twinning to report.	Xtriage
L-test for twinning ²	$\langle L \rangle = 0.50$, $\langle L^2 \rangle = 0.34$	Xtriage
Outliers	0 of 195208 reflections	Xtriage
F_o, F_c correlation	0.95	EDS
Total number of atoms	17504	wwPDB-VP
Average B, all atoms (Å ²)	20.0	wwPDB-VP

Xtriage's analysis on translational NCS is as follows: *The largest off-origin peak in the Patterson function is 2.93% of the height of the origin peak. No significant pseudotranslation is detected.*

¹Intensities estimated from amplitudes.

²Theoretical values of $\langle |L| \rangle$, $\langle L^2 \rangle$ for acentric reflections are 0.5, 0.375 respectively for untwinned datasets, and 0.333, 0.2 for perfectly twinned datasets.

5 Model quality [i](#)

5.1 Standard geometry [i](#)

Bond lengths and bond angles in the following residue types are not validated in this section: 6MO, FME, MGD, SF4, AGA, 3PH, F3S, HEM, MD1

The Z score for a bond length (or angle) is the number of standard deviations the observed value is removed from the expected value. A bond length (or angle) with $|Z| > 5$ is considered an outlier worth inspection. RMSZ is the root-mean-square of all Z scores of the bond lengths (or angles).

Mol	Chain	Bond lengths		Bond angles	
		RMSZ	# Z >5	RMSZ	# Z >5
1	A	0.31	0/10129	0.63	8/13749 (0.1%)
2	B	0.32	0/4146	0.60	0/5608
3	C	0.32	0/1833	0.53	0/2481
All	All	0.31	0/16108	0.61	8/21838 (0.0%)

Chiral center outliers are detected by calculating the chiral volume of a chiral center and verifying if the center is modelled as a planar moiety or with the opposite hand. A planarity outlier is detected by checking planarity of atoms in a peptide group, atoms in a mainchain group or atoms of a sidechain that are expected to be planar.

Mol	Chain	#Chirality outliers	#Planarity outliers
1	A	0	4

There are no bond length outliers.

All (8) bond angle outliers are listed below:

Mol	Chain	Res	Type	Atoms	Z	Observed(°)	Ideal(°)
1	A	501	ALA	C-N-CA	12.16	152.09	121.70
1	A	1163	HIS	C-N-CA	11.64	150.80	121.70
1	A	502	TYR	CB-CG-CD1	-7.32	116.61	121.00
1	A	501	ALA	N-CA-CB	6.20	118.78	110.10
1	A	502	TYR	CB-CG-CD2	6.01	124.61	121.00
1	A	809	LEU	N-CA-C	-5.68	95.68	111.00
1	A	1163	HIS	CB-CA-C	5.31	121.02	110.40
1	A	1097	ILE	N-CA-C	-5.22	96.92	111.00

There are no chirality outliers.

All (4) planarity outliers are listed below:

Mol	Chain	Res	Type	Group
1	A	1163	HIS	Mainchain,Peptide
1	A	501	ALA	Mainchain,Peptide

5.2 Too-close contacts ⓘ

In the following table, the Non-H and H(model) columns list the number of non-hydrogen atoms and hydrogen atoms in the chain respectively. The H(added) column lists the number of hydrogen atoms added and optimized by MolProbity. The Clashes column lists the number of clashes within the asymmetric unit, whereas Symm-Clashes lists symmetry related clashes.

Mol	Chain	Non-H	H(model)	H(added)	Clashes	Symm-Clashes
1	A	9870	0	9531	137	0
2	B	4050	0	3974	34	0
3	C	1791	0	1831	31	0
4	A	47	0	22	3	0
5	A	47	0	22	2	0
6	A	1	0	0	0	0
7	A	8	0	0	0	0
7	B	16	0	0	2	0
8	B	14	0	0	0	0
9	B	18	0	10	0	0
10	C	86	0	60	0	0
11	C	30	0	36	0	0
12	A	912	0	0	8	1
12	B	512	0	0	3	0
12	C	102	0	0	2	0
All	All	17504	0	15486	197	1

The all-atom clashscore is defined as the number of clashes found per 1000 atoms (including hydrogen atoms). The all-atom clashscore for this structure is 6.

All (197) close contacts within the same asymmetric unit are listed below, sorted by their clash magnitude.

Atom-1	Atom-2	Interatomic distance (Å)	Clash overlap (Å)
1:A:378:ASN:HD21	1:A:382:GLU:HB2	1.27	1.00
3:C:73:PRO:HG2	3:C:76:MET:HG3	1.47	0.95
1:A:378:ASN:ND2	1:A:382:GLU:HB2	1.97	0.80
1:A:863:PRO:HG2	1:A:864:LEU:HD22	1.66	0.77
1:A:227:SER:HB3	1:A:228:PRO:HD3	1.67	0.76
1:A:626:GLU:HA	1:A:629:LEU:HD23	1.68	0.75
1:A:387:ASN:ND2	1:A:405:ARG:HB2	2.06	0.70

Continued on next page...

Continued from previous page...

Atom-1	Atom-2	Interatomic distance (Å)	Clash overlap (Å)
1:A:508:GLU:OE1	1:A:515:ARG:HD2	1.91	0.70
3:C:155:GLU:O	3:C:159:LEU:HD23	1.92	0.69
3:C:159:LEU:HD21	3:C:180:VAL:HG21	1.76	0.68
1:A:1037:THR:HB	1:A:1043:GLN:HG3	1.78	0.66
3:C:83:ILE:HD11	3:C:156:MET:HG2	1.79	0.64
2:B:428:ARG:HB3	2:B:428:ARG:NH2	2.11	0.64
1:A:586:GLN:HE21	1:A:590:GLN:CG	2.11	0.63
1:A:722:LYS:H	1:A:722:LYS:HD2	1.63	0.62
3:C:72:THR:HG23	3:C:76:MET:HE2	1.81	0.61
1:A:1098:HIS:CE1	4:A:1245:MD1:S12	2.94	0.61
1:A:497:ASP:HA	1:A:515:ARG:HH11	1.64	0.61
1:A:596:LEU:O	1:A:600:ARG:HD2	2.01	0.61
2:B:428:ARG:HB3	2:B:428:ARG:HH21	1.65	0.61
1:A:882:ALA:HB1	1:A:883:PRO:HD2	1.83	0.60
1:A:20:GLY:O	3:C:217:LYS:HD2	2.01	0.60
3:C:73:PRO:HD2	3:C:76:MET:HE2	1.82	0.60
1:A:1062:ARG:HD2	12:A:1840:HOH:O	2.00	0.60
1:A:578:VAL:HG23	1:A:579:GLY:H	1.66	0.60
2:B:373:SER:HB3	2:B:428:ARG:NH1	2.17	0.59
1:A:191:ILE:O	1:A:194:MET:HG2	2.02	0.59
1:A:366:GLN:HG2	1:A:373:LYS:HD2	1.84	0.59
1:A:1098:HIS:CE1	5:A:1246:MGD:S13	2.96	0.59
1:A:859:GLU:HG3	1:A:860:LEU:HD12	1.84	0.58
1:A:119:LYS:O	1:A:123:GLU:HG3	2.03	0.58
1:A:720:SER:O	1:A:722:LYS:HD2	2.04	0.58
1:A:474:TYR:O	1:A:478:LEU:HD13	2.04	0.58
3:C:96:ALA:O	3:C:100:LEU:HD13	2.03	0.58
1:A:336:MET:HA	1:A:473:VAL:HB	1.86	0.58
1:A:1155:PRO:HG2	1:A:1158:MET:HG2	1.86	0.58
2:B:508:THR:O	2:B:509:GLU:HB3	2.04	0.57
1:A:335:ASP:O	1:A:338:MET:HB2	2.04	0.57
1:A:338:MET:HG3	1:A:374:THR:HB	1.87	0.57
1:A:928:ARG:HG2	1:A:943:PRO:HG3	1.86	0.57
1:A:931:ASN:O	1:A:932:TYR:HB2	2.03	0.57
2:B:395:THR:HG21	2:B:401:PRO:HG2	1.86	0.56
1:A:579:GLY:HA3	12:A:1836:HOH:O	2.05	0.56
3:C:12:TYR:N	3:C:13:PRO:HD2	2.20	0.56
2:B:240:LYS:HZ3	3:C:36:ARG:HB3	1.71	0.56
2:B:15:LYS:HD3	12:B:1140:HOH:O	2.07	0.55
3:C:82:PRO:HG2	3:C:85:VAL:HG23	1.89	0.55
1:A:616:SER:HB3	1:A:619:ARG:HD3	1.89	0.55

Continued on next page...

Continued from previous page...

Atom-1	Atom-2	Interatomic distance (Å)	Clash overlap (Å)
1:A:652:MET:HE2	1:A:862:GLN:HE22	1.71	0.55
1:A:624:THR:O	1:A:627:GLU:HG2	2.07	0.54
3:C:160:VAL:O	3:C:164:GLN:HG3	2.07	0.54
1:A:584:ARG:HD3	1:A:1006:ILE:HG12	1.89	0.54
1:A:1006:ILE:HD13	1:A:1016:GLU:HG3	1.90	0.54
1:A:1230:ILE:HD12	1:A:1230:ILE:N	2.24	0.53
1:A:353:ARG:HA	1:A:1047:ASP:HB2	1.92	0.52
1:A:1087:ASN:O	1:A:1159:THR:HG22	2.09	0.52
1:A:471:THR:HG21	1:A:476:LEU:HD13	1.91	0.52
3:C:73:PRO:HD2	3:C:76:MET:CE	2.40	0.52
1:A:223:LEU:O	1:A:225:PRO:HD3	2.10	0.52
2:B:361:PRO:HD2	2:B:384:ARG:HD3	1.91	0.51
1:A:92:CYS:HB2	1:A:93:PRO:HD2	1.92	0.51
2:B:143:ASN:ND2	2:B:146:ASP:HB2	2.25	0.51
2:B:246:PHE:HA	7:B:803:SF4:S4	2.50	0.51
1:A:652:MET:HE1	1:A:654:TRP:CZ2	2.44	0.51
1:A:625:ALA:O	1:A:629:LEU:HD22	2.09	0.51
1:A:360:LEU:N	1:A:360:LEU:HD22	2.26	0.51
1:A:442:PHE:CE2	1:A:1064:PRO:HG2	2.46	0.51
2:B:78:MET:HG3	12:B:878:HOH:O	2.09	0.51
2:B:187:CYS:HB3	2:B:349:THR:O	2.11	0.51
4:A:1245:MD1:H7	4:A:1245:MD1:C11	2.42	0.50
1:A:371:GLU:HG2	1:A:372:TRP:CD1	2.47	0.50
1:A:652:MET:CE	1:A:862:GLN:HE22	2.25	0.50
1:A:856:SER:O	1:A:859:GLU:HG2	2.11	0.50
2:B:20:HIS:CE1	2:B:44:VAL:HB	2.47	0.49
1:A:384:VAL:HG22	1:A:385:ALA:N	2.25	0.49
1:A:1098:HIS:HE1	5:A:1246:MGD:S13	2.34	0.49
1:A:217:TYR:CE2	1:A:223:LEU:HA	2.47	0.49
1:A:404:GLN:HE22	1:A:1041:ARG:HH12	1.61	0.49
1:A:578:VAL:HG23	1:A:579:GLY:N	2.27	0.49
1:A:1230:ILE:HD11	1:A:1242:GLN:HG3	1.95	0.49
1:A:214:LEU:HB3	1:A:607:SER:OG	2.12	0.49
1:A:586:GLN:HE21	1:A:590:GLN:HG3	1.76	0.48
1:A:1069:SER:O	1:A:1139:ASN:HB2	2.12	0.48
1:A:864:LEU:N	1:A:864:LEU:HD22	2.28	0.48
2:B:42:ASN:HB2	7:B:803:SF4:S1	2.53	0.48
1:A:582:LYS:HD2	12:A:1663:HOH:O	2.13	0.48
1:A:282:PRO:HB2	1:A:1158:MET:HE3	1.96	0.48
1:A:261:THR:HG22	2:B:264:VAL:HG11	1.94	0.48
1:A:1174:SER:HB2	12:A:1737:HOH:O	2.14	0.48

Continued on next page...

Continued from previous page...

Atom-1	Atom-2	Interatomic distance (Å)	Clash overlap (Å)
1:A:68:VAL:HB	1:A:102:LEU:HD22	1.95	0.48
1:A:662:GLY:HA2	1:A:704:ASN:HD21	1.80	0.47
1:A:600:ARG:HD3	1:A:905:LEU:HD13	1.96	0.47
1:A:223:LEU:HD12	1:A:224:PRO:HD2	1.95	0.47
3:C:143:THR:HB	3:C:184:PHE:CE1	2.49	0.47
1:A:357:ALA:O	1:A:363:ALA:HA	2.15	0.47
1:A:1206:TYR:CG	1:A:1207:GLY:N	2.83	0.47
2:B:220:TRP:C	2:B:221:ARG:HG3	2.35	0.47
1:A:983:THR:O	1:A:987:LEU:HG	2.15	0.47
1:A:1072:GLU:HB2	12:A:1713:HOH:O	2.14	0.47
1:A:658:ALA:HA	1:A:659:PRO:C	2.34	0.47
1:A:1108:LEU:HD13	2:B:106:PHE:CE2	2.49	0.47
1:A:1037:THR:HA	1:A:1203:HIS:HB3	1.96	0.47
1:A:679:PRO:HB2	1:A:847:ILE:HD11	1.97	0.47
3:C:72:THR:HG23	3:C:76:MET:CE	2.44	0.47
2:B:78:MET:HG2	2:B:225:THR:HG22	1.96	0.47
3:C:6:MET:O	3:C:10:ASP:HB2	2.15	0.46
1:A:177:ILE:HG12	1:A:182:PRO:HA	1.97	0.46
1:A:919:ASN:ND2	1:A:921:GLN:H	2.14	0.46
2:B:19:CYS:O	2:B:20:HIS:HB2	2.15	0.46
1:A:741:LYS:HB3	1:A:745:GLN:HB2	1.96	0.46
1:A:6:ARG:HH21	1:A:6:ARG:HG2	1.81	0.45
1:A:722:LYS:N	1:A:722:LYS:HD2	2.29	0.45
1:A:780:LEU:HD11	2:B:122:PRO:HG2	1.98	0.45
1:A:387:ASN:HD21	1:A:405:ARG:HB2	1.81	0.45
1:A:168:LEU:C	1:A:168:LEU:HD23	2.37	0.45
1:A:1144:LEU:HD12	1:A:1144:LEU:C	2.36	0.45
1:A:30:ASP:HB2	2:B:486:GLY:HA2	1.99	0.45
1:A:191:ILE:HG23	1:A:580:GLN:O	2.16	0.45
1:A:677:MET:HG3	1:A:682:TYR:HB2	1.99	0.45
3:C:138:ALA:O	3:C:142:LEU:HD13	2.16	0.45
1:A:767:LEU:HD13	1:A:769:VAL:HG23	1.99	0.45
2:B:119:LYS:HD2	2:B:119:LYS:N	2.31	0.45
3:C:83:ILE:HD11	3:C:156:MET:CG	2.46	0.44
2:B:437:GLU:O	2:B:441:GLN:HG3	2.18	0.44
2:B:407:LYS:HD2	2:B:433:VAL:HG12	1.99	0.44
1:A:372:TRP:CE2	1:A:863:PRO:HB3	2.52	0.44
1:A:1208:PHE:O	1:A:1209:ASN:HB2	2.17	0.44
2:B:280:ILE:HG23	2:B:350:LEU:HD12	2.00	0.44
3:C:143:THR:HG22	3:C:183:ILE:HG13	2.00	0.44
1:A:517:GLN:HE21	1:A:517:GLN:HA	1.82	0.44

Continued on next page...

Continued from previous page...

Atom-1	Atom-2	Interatomic distance (Å)	Clash overlap (Å)
1:A:237:VAL:HB	1:A:238:PRO:HD2	1.99	0.44
1:A:608:THR:HB	1:A:1213:THR:OG1	2.18	0.44
1:A:152:ARG:HB2	1:A:734:THR:CG2	2.48	0.44
1:A:225:PRO:HB2	1:A:551:ASP:OD1	2.18	0.43
2:B:183:LEU:HD23	2:B:183:LEU:N	2.33	0.43
1:A:191:ILE:HD13	1:A:216:PHE:CE1	2.53	0.43
1:A:859:GLU:HG3	1:A:860:LEU:CD1	2.48	0.43
1:A:27:THR:HG23	3:C:222:ARG:HD3	2.00	0.43
1:A:591:PRO:HA	1:A:596:LEU:HB2	2.00	0.43
3:C:56:HIS:HA	3:C:59:ILE:HG22	2.00	0.43
1:A:944:MET:CE	1:A:946:ASN:HD21	2.31	0.43
2:B:291:ASP:O	2:B:295:ARG:HG2	2.19	0.43
1:A:863:PRO:CG	1:A:864:LEU:HD22	2.44	0.43
1:A:100:TRP:O	1:A:104:SER:HB3	2.19	0.43
1:A:517:GLN:NE2	1:A:517:GLN:HA	2.33	0.43
1:A:329:TYR:CE1	1:A:565:GLY:HA2	2.53	0.43
3:C:82:PRO:HG2	3:C:85:VAL:CG2	2.48	0.42
3:C:155:GLU:HB2	12:C:845:HOH:O	2.19	0.42
1:A:586:GLN:HE21	1:A:590:GLN:CD	2.22	0.42
1:A:936:GLU:HB2	12:A:1475:HOH:O	2.19	0.42
1:A:1115:PRO:HA	1:A:1165:GLN:OE1	2.19	0.42
1:A:397:LYS:HD3	1:A:977:PHE:HA	2.01	0.42
2:B:441:GLN:HG2	12:B:1043:HOH:O	2.19	0.42
3:C:204:ILE:HD12	3:C:205:HIS:N	2.34	0.42
4:A:1245:MD1:O11	4:A:1245:MD1:H7	2.20	0.42
3:C:46:LYS:HD3	12:C:891:HOH:O	2.20	0.42
1:A:1100:THR:O	1:A:1101:TYR:HB2	2.19	0.42
1:A:1027:THR:O	1:A:1031:GLU:HB2	2.20	0.42
2:B:224:ILE:CD1	2:B:234:PHE:HB2	2.50	0.42
1:A:1093:GLN:HG2	1:A:1163:HIS:O	2.20	0.42
1:A:216:PHE:CD1	1:A:217:TYR:N	2.88	0.41
3:C:50:LEU:HD13	3:C:54:LEU:HD12	2.02	0.41
2:B:11:LEU:CD2	2:B:181:PRO:HG2	2.50	0.41
1:A:652:MET:HE3	1:A:866:VAL:HG13	2.02	0.41
1:A:1044:LEU:N	1:A:1044:LEU:HD12	2.35	0.41
1:A:1177:THR:O	1:A:1178:GLN:HB2	2.20	0.41
3:C:81:LEU:O	3:C:86:LYS:HE3	2.21	0.41
1:A:218:ASP:N	1:A:218:ASP:OD2	2.54	0.41
3:C:62:ILE:HD11	3:C:98:GLY:HA2	2.01	0.41
1:A:375:VAL:HG12	1:A:376:ALA:N	2.36	0.41
1:A:863:PRO:HG2	1:A:864:LEU:CD2	2.44	0.41

Continued on next page...

Continued from previous page...

Atom-1	Atom-2	Interatomic distance (Å)	Clash overlap (Å)
1:A:187:GLY:HA3	1:A:206:LEU:HD11	2.01	0.41
1:A:835:GLU:HG3	1:A:836:VAL:N	2.35	0.41
1:A:345:ARG:HB2	1:A:348:TYR:O	2.21	0.41
1:A:102:LEU:H	1:A:102:LEU:HD12	1.85	0.41
1:A:152:ARG:HB2	1:A:734:THR:HG21	2.03	0.41
1:A:52:ASN:CG	1:A:191:ILE:HG13	2.41	0.41
1:A:423:GLN:CD	1:A:423:GLN:H	2.24	0.41
1:A:268:THR:HG22	1:A:290:LEU:HD22	2.03	0.41
3:C:2:GLN:HA	3:C:2:GLN:OE1	2.21	0.41
1:A:878:PRO:HG2	12:A:1975:HOH:O	2.19	0.41
1:A:85:PRO:HG2	1:A:266:PHE:CE2	2.56	0.41
2:B:322:ILE:O	2:B:326:GLN:HG3	2.21	0.41
3:C:208:SER:O	3:C:209:VAL:C	2.58	0.40
1:A:366:GLN:HG3	1:A:373:LYS:NZ	2.36	0.40
1:A:336:MET:N	1:A:337:PRO:HD2	2.36	0.40
1:A:384:VAL:HG23	12:A:1715:HOH:O	2.20	0.40
1:A:219:TRP:HB2	1:A:607:SER:HB2	2.02	0.40
1:A:597:ASP:O	1:A:903:GLY:HA3	2.21	0.40
3:C:182:PHE:O	3:C:185:ARG:HB2	2.20	0.40
1:A:81:ARG:HH22	1:A:245:ASN:HD21	1.69	0.40
1:A:366:GLN:CG	1:A:373:LYS:HD2	2.52	0.40
2:B:400:LYS:HB3	2:B:401:PRO:CD	2.52	0.40
2:B:100:TYR:O	2:B:101:TYR:HB3	2.22	0.40
1:A:749:VAL:O	1:A:749:VAL:HG23	2.22	0.40
2:B:295:ARG:NH1	2:B:298:ASP:OD1	2.54	0.40
1:A:199:TYR:C	1:A:199:TYR:CD1	2.93	0.40

All (1) symmetry-related close contacts are listed below. The label for Atom-2 includes the symmetry operator and encoded unit-cell translations to be applied.

Atom-1	Atom-2	Interatomic distance (Å)	Clash overlap (Å)
12:A:1886:HOH:O	12:A:1886:HOH:O[3_354]	1.99	0.21

5.3 Torsion angles [i](#)

5.3.1 Protein backbone [i](#)

In the following table, the Percentiles column shows the percent Ramachandran outliers of the chain as a percentile score with respect to all X-ray entries followed by that with respect to entries of similar resolution.

The Analysed column shows the number of residues for which the backbone conformation was analysed, and the total number of residues.

Mol	Chain	Analysed	Favoured	Allowed	Outliers	Percentiles	
1	A	1242/1244 (100%)	1176 (95%)	58 (5%)	8 (1%)	30	17
2	B	507/509 (100%)	493 (97%)	14 (3%)	0	100	100
3	C	223/225 (99%)	218 (98%)	5 (2%)	0	100	100
All	All	1972/1978 (100%)	1887 (96%)	77 (4%)	8 (0%)	39	27

All (8) Ramachandran outliers are listed below:

Mol	Chain	Res	Type
1	A	9	TYR
1	A	578	VAL
1	A	1166	GLU
1	A	190	PRO
1	A	361	VAL
1	A	224	PRO
1	A	501	ALA
1	A	808	PRO

5.3.2 Protein sidechains ⓘ

In the following table, the Percentiles column shows the percent sidechain outliers of the chain as a percentile score with respect to all X-ray entries followed by that with respect to entries of similar resolution.

The Analysed column shows the number of residues for which the sidechain conformation was analysed, and the total number of residues.

Mol	Chain	Analysed	Rotameric	Outliers	Percentiles	
1	A	1039/1039 (100%)	1019 (98%)	20 (2%)	65	59
2	B	435/435 (100%)	427 (98%)	8 (2%)	66	61
3	C	184/184 (100%)	183 (100%)	1 (0%)	92	92
All	All	1658/1658 (100%)	1629 (98%)	29 (2%)	68	64

All (29) residues with a non-rotameric sidechain are listed below:

Mol	Chain	Res	Type
1	A	9	TYR
1	A	94	ARG

Continued on next page...

Continued from previous page...

Mol	Chain	Res	Type
1	A	190	PRO
1	A	338	MET
1	A	461	GLN
1	A	476	LEU
1	A	533	HIS
1	A	767	LEU
1	A	808	PRO
1	A	864	LEU
1	A	926	LEU
1	A	936	GLU
1	A	1041	ARG
1	A	1043	GLN
1	A	1062	ARG
1	A	1072	GLU
1	A	1087	ASN
1	A	1110	LEU
1	A	1184	HIS
1	A	1233	LEU
2	B	37	GLU
2	B	74	LEU
2	B	85	LEU
2	B	119	LYS
2	B	161	PHE
2	B	183	LEU
2	B	221	ARG
2	B	428	ARG
3	C	36	ARG

Some sidechains can be flipped to improve hydrogen bonding and reduce clashes. All (28) such sidechains are listed below:

Mol	Chain	Res	Type
1	A	12	GLN
1	A	173	ASN
1	A	179	ASN
1	A	234	GLN
1	A	245	ASN
1	A	258	GLN
1	A	366	GLN
1	A	369	ASN
1	A	404	GLN
1	A	461	GLN
1	A	517	GLN

Continued on next page...

Continued from previous page...

Mol	Chain	Res	Type
1	A	559	ASN
1	A	586	GLN
1	A	604	HIS
1	A	704	ASN
1	A	708	ASN
1	A	919	ASN
1	A	942	GLN
1	A	946	ASN
1	A	1076	GLN
1	A	1082	GLN
1	A	1098	HIS
1	A	1163	HIS
2	B	160	ASN
2	B	451	ASN
3	C	53	ASN
3	C	149	GLN
3	C	175	GLN

5.3.3 RNA ⓘ

There are no RNA molecules in this entry.

5.4 Non-standard residues in protein, DNA, RNA chains ⓘ

1 non-standard protein/DNA/RNA residue is modelled in this entry.

In the following table, the Counts columns list the number of bonds (or angles) for which Mogul statistics could be retrieved, the number of bonds (or angles) that are observed in the model and the number of bonds (or angles) that are defined in the chemical component dictionary. The Link column lists molecule types, if any, to which the group is linked. The Z score for a bond length (or angle) is the number of standard deviations the observed value is removed from the expected value. A bond length (or angle) with $|Z| > 2$ is considered an outlier worth inspection. RMSZ is the root-mean-square of all Z scores of the bond lengths (or angles).

Mol	Type	Chain	Res	Link	Bond lengths			Bond angles		
					Counts	RMSZ	$\# Z > 2$	Counts	RMSZ	$\# Z > 2$
3	FME	C	1	3	8,9,10	1.42	2 (25%)	6,9,11	1.96	2 (33%)

In the following table, the Chirals column lists the number of chiral outliers, the number of chiral centers analysed, the number of these observed in the model and the number defined in the chemical component dictionary. Similar counts are reported in the Torsion and Rings columns. '-' means no outliers of that kind were identified.

Mol	Type	Chain	Res	Link	Chirals	Torsions	Rings
3	FME	C	1	3	-	0/6/9/11	0/0/0/0

All (2) bond length outliers are listed below:

Mol	Chain	Res	Type	Atoms	Z	Observed(Å)	Ideal(Å)
3	C	1	FME	CB-CA	-2.98	1.48	1.53
3	C	1	FME	CB-CG	2.08	1.60	1.51

All (2) bond angle outliers are listed below:

Mol	Chain	Res	Type	Atoms	Z	Observed(°)	Ideal(°)
3	C	1	FME	O1-CN-N	-2.98	120.47	124.76
3	C	1	FME	CA-N-CN	2.96	127.38	122.82

There are no chirality outliers.

There are no torsion outliers.

There are no ring outliers.

No monomer is involved in short contacts.

5.5 Carbohydrates [i](#)

There are no carbohydrates in this entry.

5.6 Ligand geometry [i](#)

Of 12 ligands modelled in this entry, 1 is monoatomic - leaving 11 for Mogul analysis.

In the following table, the Counts columns list the number of bonds (or angles) for which Mogul statistics could be retrieved, the number of bonds (or angles) that are observed in the model and the number of bonds (or angles) that are defined in the chemical component dictionary. The Link column lists molecule types, if any, to which the group is linked. The Z score for a bond length (or angle) is the number of standard deviations the observed value is removed from the expected value. A bond length (or angle) with $|Z| > 2$ is considered an outlier worth inspection. RMSZ is the root-mean-square of all Z scores of the bond lengths (or angles).

Mol	Type	Chain	Res	Link	Bond lengths			Bond angles		
					Counts	RMSZ	# Z > 2	Counts	RMSZ	# Z > 2
4	MD1	A	1245	6	39,51,51	3.82	10 (25%)	37,78,78	2.39	10 (27%)
5	MGD	A	1246	6	38,52,52	1.96	10 (26%)	43,81,81	2.59	16 (37%)
7	SF4	A	1248	1	0,12,12	0.00	-	0,24,24	0.00	-

Mol	Type	Chain	Res	Link	Bond lengths			Bond angles		
					Counts	RMSZ	# Z > 2	Counts	RMSZ	# Z > 2
8	F3S	B	802	2	0,9,9	0.00	-	0,15,15	0.00	-
7	SF4	B	803	2	0,12,12	0.00	-	0,24,24	0.00	-
7	SF4	B	804	2	0,12,12	0.00	-	0,24,24	0.00	-
8	F3S	B	805	2	0,9,9	0.00	-	0,15,15	0.00	-
9	3PH	B	806	-	17,17,47	0.96	1 (5%)	19,21,52	2.08	5 (26%)
11	AGA	C	309	-	29,29,29	0.71	1 (3%)	30,35,35	1.45	3 (10%)
10	HEM	C	806	3	30,50,50	2.34	11 (36%)	24,82,82	2.64	10 (41%)
10	HEM	C	807	3	30,50,50	2.44	13 (43%)	24,82,82	2.77	11 (45%)

In the following table, the Chirals column lists the number of chiral outliers, the number of chiral centers analysed, the number of these observed in the model and the number defined in the chemical component dictionary. Similar counts are reported in the Torsion and Rings columns. '-' means no outliers of that kind were identified.

Mol	Type	Chain	Res	Link	Chirals	Torsions	Rings
4	MD1	A	1245	6	-	0/18/59/59	0/5/5/5
5	MGD	A	1246	6	-	0/18/66/66	0/6/6/6
7	SF4	A	1248	1	-	0/0/48/48	0/6/5/5
8	F3S	B	802	2	-	0/0/24/24	0/0/3/3
7	SF4	B	803	2	-	0/0/48/48	0/6/5/5
7	SF4	B	804	2	-	0/0/48/48	0/6/5/5
8	F3S	B	805	2	-	0/0/24/24	0/0/3/3
9	3PH	B	806	-	1/1/3/4	1/18/18/49	0/0/0/0
11	AGA	C	309	-	-	0/34/34/34	0/0/0/0
10	HEM	C	806	3	-	0/10/54/54	0/0/8/8
10	HEM	C	807	3	-	0/10/54/54	0/0/8/8

All (46) bond length outliers are listed below:

Mol	Chain	Res	Type	Atoms	Z	Observed(Å)	Ideal(Å)
10	C	806	HEM	C2D-C3D	-6.34	1.35	1.54
10	C	807	HEM	C2D-C3D	-6.22	1.35	1.54
10	C	807	HEM	C3B-C4B	-4.93	1.47	1.51
10	C	806	HEM	C3B-C4B	-4.82	1.47	1.51
10	C	807	HEM	C3D-C4D	-3.22	1.47	1.51
10	C	807	HEM	C2C-C1C	-3.04	1.46	1.52
10	C	806	HEM	C2C-C1C	-2.81	1.47	1.52
10	C	806	HEM	C3D-C4D	-2.69	1.48	1.51
10	C	807	HEM	CMC-C2C	2.02	1.57	1.53
10	C	807	HEM	CAD-C3D	2.02	1.58	1.54
10	C	806	HEM	CMC-C2C	2.03	1.57	1.53

Continued on next page...

Continued from previous page...

Mol	Chain	Res	Type	Atoms	Z	Observed(Å)	Ideal(Å)
11	C	309	AGA	C8-C7	2.05	1.56	1.50
5	A	1246	MGD	C23-N22	2.24	1.49	1.44
10	C	807	HEM	CMA-C3A	2.26	1.56	1.51
5	A	1246	MGD	C6-C5	2.31	1.45	1.41
5	A	1246	MGD	O11-C11	2.42	1.47	1.43
10	C	807	HEM	C1C-NC	2.45	1.39	1.36
10	C	806	HEM	CMA-C3A	2.46	1.56	1.51
10	C	806	HEM	C1C-NC	2.46	1.39	1.36
10	C	807	HEM	FE-NC	2.61	2.06	1.95
10	C	806	HEM	FE-NC	2.61	2.06	1.95
4	A	1245	MD1	C20-N18	2.70	1.39	1.35
5	A	1246	MGD	C21-N20	2.75	1.39	1.34
9	B	806	3PH	P-O12	2.75	1.60	1.51
10	C	807	HEM	C3C-CAC	2.80	1.56	1.51
10	C	806	HEM	C4C-NC	2.82	1.39	1.36
4	A	1245	MD1	C14-C13	2.86	1.54	1.50
10	C	807	HEM	CAA-C2A	2.94	1.57	1.52
5	A	1246	MGD	C2-N1	3.06	1.40	1.35
4	A	1245	MD1	C13-C12	3.10	1.44	1.34
4	A	1245	MD1	C2-N1	3.12	1.40	1.35
5	A	1246	MGD	C19-N18	3.27	1.41	1.35
4	A	1245	MD1	C4-N3	3.29	1.40	1.35
5	A	1246	MGD	C21-N22	3.33	1.41	1.35
10	C	806	HEM	C3C-CAC	3.45	1.57	1.51
4	A	1245	MD1	C17-N17	3.46	1.41	1.35
10	C	807	HEM	C4C-NC	3.51	1.40	1.36
5	A	1246	MGD	C14-N15	3.66	1.50	1.45
10	C	806	HEM	C3B-CAB	4.01	1.58	1.51
10	C	807	HEM	C3B-CAB	4.55	1.59	1.51
4	A	1245	MD1	C6-N1	4.89	1.42	1.33
5	A	1246	MGD	C6-N1	4.93	1.42	1.33
5	A	1246	MGD	C17-N18	4.98	1.42	1.33
4	A	1245	MD1	C15-N17	5.08	1.42	1.33
4	A	1245	MD1	C16-C20	5.36	1.48	1.40
4	A	1245	MD1	C7-N8	20.23	1.50	1.27

All (55) bond angle outliers are listed below:

Mol	Chain	Res	Type	Atoms	Z	Observed(°)	Ideal(°)
4	A	1245	MD1	C5-C6-N1	-6.51	114.68	123.59
5	A	1246	MGD	C5-C6-N1	-5.78	115.69	123.59
5	A	1246	MGD	N3-C2-N1	-5.11	119.66	127.44

Continued on next page...

Continued from previous page...

Mol	Chain	Res	Type	Atoms	Z	Observed(°)	Ideal(°)
5	A	1246	MGD	O3B-PA-O3A	-4.69	90.49	102.94
5	A	1246	MGD	C21-N22-C23	-4.42	115.02	123.67
4	A	1245	MD1	N17-C17-N18	-4.28	118.52	125.53
4	A	1245	MD1	N3-C2-N1	-4.23	121.00	127.44
10	C	807	HEM	C3C-CAC-CBC	-3.84	118.57	124.46
5	A	1246	MGD	N18-C19-N20	-3.57	119.69	125.53
5	A	1246	MGD	O11-C23-C14	-3.29	106.71	108.96
5	A	1246	MGD	C6-C5-C4	-3.15	117.13	120.90
10	C	806	HEM	C3C-CAC-CBC	-3.11	119.68	124.46
4	A	1245	MD1	C6-C5-C4	-3.00	117.32	120.90
10	C	806	HEM	CMA-C3A-C4A	-2.97	123.45	128.36
10	C	807	HEM	CMA-C3A-C4A	-2.95	123.48	128.36
5	A	1246	MGD	C1'-N9-C4	-2.84	122.66	126.94
4	A	1245	MD1	O3B-PA-O5'	-2.73	95.69	102.94
10	C	806	HEM	CAA-C2A-C1A	-2.59	124.20	127.01
10	C	807	HEM	CAA-C2A-C1A	-2.50	124.29	127.01
4	A	1245	MD1	C1'-N9-C4	-2.42	123.29	126.94
11	C	309	AGA	C5-O9-C12	2.09	122.91	117.89
10	C	807	HEM	CAD-C3D-C4D	2.12	119.95	112.47
4	A	1245	MD1	N2-C2-N3	2.15	121.93	117.80
9	B	806	3PH	O21-C2-C1	2.19	116.09	108.36
5	A	1246	MGD	N19-C19-N18	2.25	120.92	117.20
10	C	807	HEM	CMA-C3A-C2A	2.25	129.95	125.24
5	A	1246	MGD	O2A-PA-O3B	2.35	115.75	105.09
10	C	806	HEM	CMA-C3A-C2A	2.37	130.19	125.24
10	C	806	HEM	CAD-C3D-C4D	2.41	120.97	112.47
5	A	1246	MGD	N22-C21-N20	2.62	120.80	116.62
4	A	1245	MD1	N16-C17-N18	2.87	121.95	117.20
10	C	807	HEM	CAA-CBA-CGA	2.94	118.13	112.75
10	C	807	HEM	CMD-C2D-C3D	3.15	128.29	114.35
10	C	806	HEM	CMD-C2D-C3D	3.18	128.43	114.35
5	A	1246	MGD	PA-O3B-PB	3.23	141.79	132.73
5	A	1246	MGD	C19-N20-C21	3.25	121.85	114.54
9	B	806	3PH	C2-O21-C21	3.62	123.41	117.29
9	B	806	3PH	O21-C2-C3	3.64	121.19	108.36
10	C	806	HEM	C2D-C3D-C4D	3.78	107.90	101.50
10	C	807	HEM	C2D-C3D-C4D	3.83	108.00	101.50
9	B	806	3PH	C33-C32-C31	4.20	130.12	113.59
9	B	806	3PH	C3-C2-C1	4.55	122.71	112.07
11	C	309	AGA	C9-C8-C7	4.58	131.58	113.59
5	A	1246	MGD	C17-N18-C19	4.95	122.81	115.94
11	C	309	AGA	C14-C13-C12	4.97	133.11	113.59

Continued on next page...

Continued from previous page...

Mol	Chain	Res	Type	Atoms	Z	Observed(°)	Ideal(°)
10	C	807	HEM	CMC-C2C-C3C	5.10	129.26	116.53
10	C	806	HEM	CMC-C2C-C3C	5.11	129.30	116.53
5	A	1246	MGD	C17-C16-C21	5.12	119.20	114.56
10	C	806	HEM	CMB-C2B-C3B	5.40	130.01	116.53
5	A	1246	MGD	C6-N1-C2	5.51	123.58	115.94
10	C	807	HEM	CMB-C2B-C3B	5.59	130.48	116.53
4	A	1245	MD1	C15-N17-C17	5.79	123.97	115.94
10	C	806	HEM	CAD-C3D-C2D	6.23	131.13	113.22
4	A	1245	MD1	C6-N1-C2	6.55	125.03	115.94
10	C	807	HEM	CAD-C3D-C2D	6.55	132.05	113.22

All (1) chirality outliers are listed below:

Mol	Chain	Res	Type	Atom
9	B	806	3PH	C2

All (1) torsion outliers are listed below:

Mol	Chain	Res	Type	Atoms
9	B	806	3PH	C2-O21-C21-O22

There are no ring outliers.

3 monomers are involved in 7 short contacts:

Mol	Chain	Res	Type	Clashes	Symm-Clashes
4	A	1245	MD1	3	0
5	A	1246	MGD	2	0
7	B	803	SF4	2	0

5.7 Other polymers [i](#)

There are no such residues in this entry.

5.8 Polymer linkage issues [i](#)

There are no chain breaks in this entry.

6 Fit of model and data ⓘ

6.1 Protein, DNA and RNA chains ⓘ

In the following table, the column labelled ‘#RSRZ> 2’ contains the number (and percentage) of RSRZ outliers, followed by percent RSRZ outliers for the chain as percentile scores relative to all X-ray entries and entries of similar resolution. The OWAB column contains the minimum, median, 95th percentile and maximum values of the occupancy-weighted average B-factor per residue. The column labelled ‘Q< 0.9’ lists the number of (and percentage) of residues with an average occupancy less than 0.9.

Mol	Chain	Analysed	<RSRZ>	#RSRZ>2	OWAB(Å ²)	Q<0.9
1	A	1244/1244 (100%)	-0.08	35 (2%) 56 60	9, 20, 39, 52	0
2	B	509/509 (100%)	-0.42	9 (1%) 71 74	9, 15, 27, 46	0
3	C	224/225 (99%)	-0.08	9 (4%) 42 46	11, 19, 36, 53	0
All	All	1977/1978 (99%)	-0.17	53 (2%) 58 61	9, 18, 36, 53	0

All (53) RSRZ outliers are listed below:

Mol	Chain	Res	Type	RSRZ
1	A	9	TYR	8.8
3	C	75	TRP	7.9
1	A	10	ALA	7.5
3	C	77	ALA	4.7
3	C	76	MET	4.6
1	A	7	PHE	4.5
1	A	1243	GLU	4.4
1	A	11	LYS	4.2
1	A	8	ARG	4.2
1	A	380	ASN	4.1
3	C	80	TRP	3.9
1	A	673	GLU	3.8
1	A	749	VAL	3.6
1	A	361	VAL	3.6
2	B	119	LYS	3.5
2	B	370	GLU	3.5
2	B	70	ILE	3.5
2	B	366	ALA	3.4
3	C	74	HIS	3.4
1	A	1244	SER	3.3
1	A	367	GLU	3.1
1	A	486	GLY	3.0
1	A	759	ASN	3.0

Continued on next page...

Continued from previous page...

Mol	Chain	Res	Type	RSRZ
1	A	1164	ALA	3.0
1	A	461	GLN	2.9
1	A	463	ALA	2.8
1	A	362	ALA	2.8
3	C	73	PRO	2.8
1	A	346	ASP	2.7
1	A	379	THR	2.6
1	A	146	LYS	2.5
1	A	636	SER	2.5
2	B	165	GLN	2.4
1	A	421	GLY	2.4
2	B	509	GLU	2.4
3	C	211	VAL	2.4
2	B	367	ASP	2.3
1	A	409	THR	2.3
1	A	412	GLU	2.2
1	A	936	GLU	2.2
2	B	364	SER	2.2
1	A	488	ASN	2.2
1	A	490	VAL	2.2
2	B	365	ALA	2.1
1	A	321	ASN	2.1
1	A	501	ALA	2.1
1	A	319	LEU	2.1
1	A	365	GLY	2.1
3	C	68	PHE	2.0
1	A	413	THR	2.0
1	A	674	LYS	2.0
3	C	46	LYS	2.0
1	A	875	ASP	2.0

6.2 Non-standard residues in protein, DNA, RNA chains ⓘ

In the following table, the Atoms column lists the number of modelled atoms in the group and the number defined in the chemical component dictionary. LLDF column lists the quality of electron density of the group with respect to its neighbouring residues in protein, DNA or RNA chains. The B-factors column lists the minimum, median, 95th percentile and maximum values of B factors of atoms in the group. The column labelled 'Q< 0.9' lists the number of atoms with occupancy less than 0.9.

Mol	Type	Chain	Res	Atoms	RSCC	RSR	LLDF	B-factors(Å ²)	Q<0.9
3	FME	C	1	10/11	0.90	0.20	-	31,36,45,46	0

6.3 Carbohydrates [i](#)

There are no carbohydrates in this entry.

6.4 Ligands [i](#)

In the following table, the Atoms column lists the number of modelled atoms in the group and the number defined in the chemical component dictionary. LLDF column lists the quality of electron density of the group with respect to its neighbouring residues in protein, DNA or RNA chains. The B-factors column lists the minimum, median, 95th percentile and maximum values of B factors of atoms in the group. The column labelled 'Q< 0.9' lists the number of atoms with occupancy less than 0.9.

Mol	Type	Chain	Res	Atoms	RSCC	RSR	LLDF	B-factors(\AA^2)	Q<0.9
9	3PH	B	806	18/48	0.68	0.26	24.67	43,52,55,56	0
10	HEM	C	807	43/43	0.96	0.13	1.19	17,19,32,38	0
10	HEM	C	806	43/43	0.98	0.10	0.93	9,13,15,23	0
11	AGA	C	309	30/30	0.92	0.15	0.46	17,21,42,42	0
4	MD1	A	1245	47/47	0.96	0.09	0.27	9,16,20,21	0
5	MGD	A	1246	47/47	0.97	0.08	-0.18	11,15,17,20	0
8	F3S	B	805	7/7	1.00	0.04	-1.64	11,11,12,12	0
7	SF4	B	804	8/8	0.99	0.04	-2.18	10,11,12,13	0
7	SF4	A	1248	8/8	1.00	0.04	-2.29	12,13,13,14	0
6	6MO	A	1247	1/1	0.96	0.05	-2.70	21,21,21,21	0
8	F3S	B	802	7/7	0.99	0.04	-2.89	12,13,14,14	0
7	SF4	B	803	8/8	1.00	0.05	-2.94	9,10,11,11	0

6.5 Other polymers [i](#)

There are no such residues in this entry.