



Full wwPDB X-ray Structure Validation Report ⓘ

Feb 19, 2016 – 06:02 PM GMT

PDB ID : 1EJE
Title : CRYSTAL STRUCTURE OF AN FMN-BINDING PROTEIN
Authors : Christendat, D.; Saridakis, V.; Bochkarev, A.; Arrowsmith, C.; Edwards, A.M.; Northeast Structural Genomics Consortium (NESG)
Deposited on : 2000-03-02
Resolution : 2.20 Å(reported)

This is a Full wwPDB X-ray Structure Validation Report for a publicly released PDB entry.
We welcome your comments at validation@mail.wwpdb.org
A user guide is available at
<http://wwpdb.org/validation/2016/XrayValidationReportHelp>
with specific help available everywhere you see the ⓘ symbol.

The following versions of software and data (see [references ⓘ](#)) were used in the production of this report:

MolProbity : 4.02b-467
Mogul : 1.7.1 (RC1), CSD as537be (2016)
Xtriage (Phenix) : **NOT EXECUTED**
EDS : **NOT EXECUTED**
Percentile statistics : 20151230.v01 (using entries in the PDB archive December 30th 2015)
Ideal geometry (proteins) : Engh & Huber (2001)
Ideal geometry (DNA, RNA) : Parkinson et al. (1996)
Validation Pipeline (wwPDB-VP) : rb-20026982

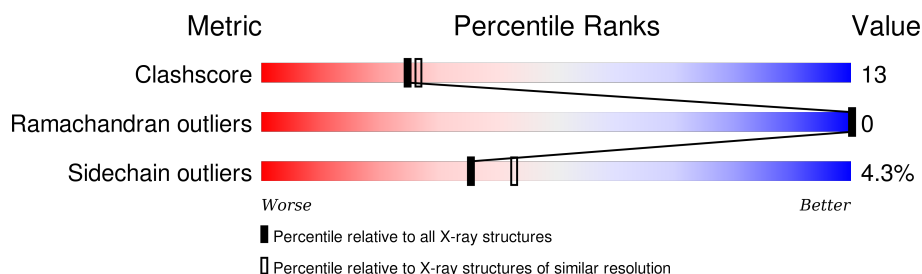
1 Overall quality at a glance

The following experimental techniques were used to determine the structure:

X-RAY DIFFRACTION

The reported resolution of this entry is 2.20 Å.

Percentile scores (ranging between 0-100) for global validation metrics of the entry are shown in the following graphic. The table shows the number of entries on which the scores are based.



Metric	Whole archive (#Entries)	Similar resolution (#Entries, resolution range(Å))
Clashscore	102246	4477 (2.20-2.20)
Ramachandran outliers	100387	4404 (2.20-2.20)
Sidechain outliers	100360	4405 (2.20-2.20)

The table below summarises the geometric issues observed across the polymeric chains and their fit to the electron density. The red, orange, yellow and green segments on the lower bar indicate the fraction of residues that contain outliers for ≥ 3 , 2, 1 and 0 types of geometric quality criteria. A grey segment represents the fraction of residues that are not modelled. The numeric value for each fraction is indicated below the corresponding segment, with a dot representing fractions $\leq 5\%$. The upper red bar (where present) indicates the fraction of residues that have poor fit to the electron density. The numeric value is given above the bar.

Note EDS was not executed.

Mol	Chain	Length	Quality of chain
1	A	192	 78% 20% .

2 Entry composition

There are 5 unique types of molecules in this entry. The entry contains 1570 atoms, of which 0 are hydrogens and 0 are deuteriums.

In the tables below, the ZeroOcc column contains the number of atoms modelled with zero occupancy, the AltConf column contains the number of residues with at least one atom in alternate conformation and the Trace column contains the number of residues modelled with at most 2 atoms.

- Molecule 1 is a protein called FMN-BINDING PROTEIN.

Mol	Chain	Residues	Atoms					ZeroOcc	AltConf	Trace
1	A	192	Total	C	N	O	S	0	0	0
			1467	920	259	280	8			

There are 6 discrepancies between the modelled and reference sequences:

Chain	Residue	Modelled	Actual	Comment	Reference
A	1	GLY	-	SEE REMARK 999	UNP O26255
A	2	SER	-	SEE REMARK 999	UNP O26255
A	3	GLN	-	SEE REMARK 999	UNP O26255
A	4	ALA	-	SEE REMARK 999	UNP O26255
A	5	ALA	-	SEE REMARK 999	UNP O26255
A	6	HIS	-	SEE REMARK 999	UNP O26255

- Molecule 2 is NICKEL (II) ION (three-letter code: NI) (formula: Ni).

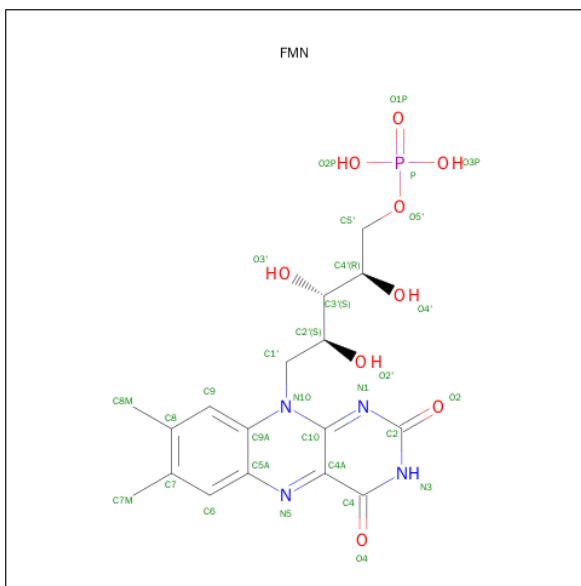
Mol	Chain	Residues	Atoms		ZeroOcc	AltConf
2	A	2	Total	Ni	0	0
			2	2		

- Molecule 3 is SULFATE ION (three-letter code: SO4) (formula: O₄S).



Mol	Chain	Residues	Atoms			ZeroOcc	AltConf
3	A	1	Total	O	S	0	0
			5	4	1		

- Molecule 4 is FLAVIN MONONUCLEOTIDE (three-letter code: FMN) (formula: $C_{17}H_{21}N_4O_9P$).



Mol	Chain	Residues	Atoms					ZeroOcc	AltConf
4	A	1	Total	C	N	O	P	0	0
			31	17	4	9	1		

- Molecule 5 is water.

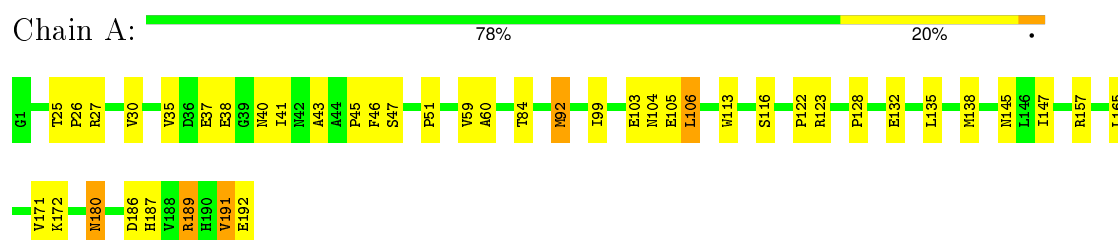
Mol	Chain	Residues	Atoms		ZeroOcc	AltConf
5	A	65	Total	O	0	0
			65	65		

3 Residue-property plots [i](#)

These plots are drawn for all protein, RNA and DNA chains in the entry. The first graphic for a chain summarises the proportions of errors displayed in the second graphic. The second graphic shows the sequence view annotated by issues in geometry and electron density. Residues are color-coded according to the number of geometric quality criteria for which they contain at least one outlier: green = 0, yellow = 1, orange = 2 and red = 3 or more. A red dot above a residue indicates a poor fit to the electron density ($\text{RSRZ} > 2$). Stretches of 2 or more consecutive residues without any outlier are shown as a green connector. Residues present in the sample, but not in the model, are shown in grey.

Note EDS was not executed.

• Molecule 1: FMN-BINDING PROTEIN



4 Data and refinement statistics

Xtriage (Phenix) and EDS were not executed - this section will therefore be incomplete.

Property	Value	Source
Space group	P 41 21 2	Depositor
Cell constants a, b, c, α , β , γ	94.65Å 94.65Å 45.40Å 90.00° 90.00° 90.00°	Depositor
Resolution (Å)	18.93 – 2.20	Depositor
% Data completeness (in resolution range)	95.7 (18.93-2.20)	Depositor
R_{merge}	0.05	Depositor
R_{sym}	(Not available)	Depositor
Refinement program	CNS 0.9	Depositor
R, R_{free}	0.225 , 0.279	Depositor
Estimated twinning fraction	No twinning to report.	Xtriage
Total number of atoms	1570	wwPDB-VP
Average B, all atoms (Å ²)	31.0	wwPDB-VP

5 Model quality [i](#)

5.1 Standard geometry [i](#)

Bond lengths and bond angles in the following residue types are not validated in this section: FMN, NI, SO4

The Z score for a bond length (or angle) is the number of standard deviations the observed value is removed from the expected value. A bond length (or angle) with $|Z| > 5$ is considered an outlier worth inspection. RMSZ is the root-mean-square of all Z scores of the bond lengths (or angles).

Mol	Chain	Bond lengths		Bond angles	
		RMSZ	$\# Z > 5$	RMSZ	$\# Z > 5$
1	A	0.64	3/1502 (0.2%)	0.74	3/2047 (0.1%)

All (3) bond length outliers are listed below:

Mol	Chain	Res	Type	Atoms	Z	Observed(Å)	Ideal(Å)
1	A	191	VAL	C-N	18.85	1.77	1.34
1	A	47	SER	C-N	6.18	1.48	1.34
1	A	51	PRO	N-CD	5.34	1.55	1.47

All (3) bond angle outliers are listed below:

Mol	Chain	Res	Type	Atoms	Z	Observed(°)	Ideal(°)
1	A	191	VAL	C-N-CA	-14.84	84.59	121.70
1	A	191	VAL	O-C-N	-8.51	109.09	122.70
1	A	191	VAL	CA-C-N	5.29	128.83	117.20

There are no chirality outliers.

There are no planarity outliers.

5.2 Too-close contacts [i](#)

In the following table, the Non-H and H(model) columns list the number of non-hydrogen atoms and hydrogen atoms in the chain respectively. The H(added) column lists the number of hydrogen atoms added and optimized by MolProbity. The Clashes column lists the number of clashes within the asymmetric unit, whereas Symm-Clashes lists symmetry related clashes.

Mol	Chain	Non-H	H(model)	H(added)	Clashes	Symm-Clashes
1	A	1467	0	1436	38	0
2	A	2	0	0	0	0

Continued on next page...

Continued from previous page...

Mol	Chain	Non-H	H(model)	H(added)	Clashes	Symm-Clashes
3	A	5	0	0	0	0
4	A	31	0	19	1	0
5	A	65	0	0	3	0
All	All	1570	0	1455	38	0

The all-atom clashscore is defined as the number of clashes found per 1000 atoms (including hydrogen atoms). The all-atom clashscore for this structure is 13.

All (38) close contacts within the same asymmetric unit are listed below, sorted by their clash magnitude.

Atom-1	Atom-2	Interatomic distance (Å)	Clash overlap (Å)
1:A:191:VAL:C	1:A:192:GLU:N	1.77	1.38
1:A:191:VAL:O	1:A:192:GLU:HA	1.31	1.22
1:A:191:VAL:C	1:A:192:GLU:CA	2.19	1.10
1:A:191:VAL:C	1:A:192:GLU:HA	1.76	1.04
1:A:191:VAL:O	1:A:192:GLU:CA	2.08	1.01
1:A:191:VAL:O	1:A:192:GLU:HG2	1.82	0.78
1:A:43:ALA:O	1:A:105:GLU:HG3	1.87	0.74
1:A:116:SER:HB3	1:A:132:GLU:CD	2.18	0.63
1:A:25:THR:HB	1:A:26:PRO:HA	1.83	0.60
1:A:84:THR:HG21	1:A:92:MET:HG2	1.85	0.58
1:A:104:ASN:OD1	1:A:106:LEU:HB2	2.04	0.58
1:A:59:VAL:HG12	1:A:60:ALA:N	2.21	0.56
1:A:25:THR:HG22	1:A:27:ARG:NH1	2.22	0.54
1:A:189:ARG:HG3	5:A:1037:HOH:O	2.07	0.53
1:A:99:ILE:CG2	1:A:103:GLU:HB2	2.40	0.51
1:A:35:VAL:HA	1:A:40:ASN:O	2.10	0.51
1:A:30:VAL:O	1:A:45:PRO:HA	2.10	0.51
1:A:128:PRO:HA	1:A:157:ARG:HB2	1.94	0.50
1:A:191:VAL:O	1:A:192:GLU:CG	2.58	0.49
1:A:37:GLU:HG3	5:A:1016:HOH:O	2.13	0.48
1:A:43:ALA:O	1:A:105:GLU:CG	2.57	0.48
1:A:180:ASN:HD22	1:A:180:ASN:H	1.61	0.47
1:A:43:ALA:CB	1:A:106:LEU:HD13	2.45	0.47
1:A:128:PRO:HG3	1:A:171:VAL:HG13	1.96	0.47
1:A:138:MET:HG2	1:A:147:ILE:HG12	1.97	0.46
1:A:172:LYS:HG2	1:A:186:ASP:HB3	1.98	0.46
1:A:165:LEU:N	1:A:165:LEU:HD12	2.31	0.46
1:A:46:PHE:HA	4:A:401:FMN:N5	2.30	0.46
1:A:25:THR:CG2	1:A:27:ARG:NH1	2.79	0.45
1:A:43:ALA:HB3	1:A:106:LEU:HD13	2.01	0.43

Continued on next page...

Continued from previous page...

Atom-1	Atom-2	Interatomic distance (Å)	Clash overlap (Å)
1:A:113:TRP:HB2	1:A:122:PRO:HB2	2.00	0.43
1:A:123:ARG:HB2	5:A:1052:HOH:O	2.18	0.43
1:A:59:VAL:CG1	1:A:60:ALA:N	2.83	0.42
1:A:41:ILE:HD13	1:A:122:PRO:HG3	2.01	0.42
1:A:135:LEU:HD11	1:A:138:MET:HG3	2.02	0.41
1:A:106:LEU:HD12	1:A:106:LEU:HA	1.93	0.41
1:A:116:SER:HB3	1:A:132:GLU:OE1	2.20	0.40
1:A:180:ASN:HD22	1:A:180:ASN:N	2.19	0.40

There are no symmetry-related clashes.

5.3 Torsion angles [i](#)

5.3.1 Protein backbone [i](#)

In the following table, the Percentiles column shows the percent Ramachandran outliers of the chain as a percentile score with respect to all X-ray entries followed by that with respect to entries of similar resolution.

The Analysed column shows the number of residues for which the backbone conformation was analysed, and the total number of residues.

Mol	Chain	Analysed	Favoured	Allowed	Outliers	Percentiles	
1	A	190/192 (99%)	181 (95%)	9 (5%)	0	100	100

There are no Ramachandran outliers to report.

5.3.2 Protein sidechains [i](#)

In the following table, the Percentiles column shows the percent sidechain outliers of the chain as a percentile score with respect to all X-ray entries followed by that with respect to entries of similar resolution.

The Analysed column shows the number of residues for which the sidechain conformation was analysed, and the total number of residues.

Mol	Chain	Analysed	Rotameric	Outliers	Percentiles	
1	A	162/162 (100%)	155 (96%)	7 (4%)	35	43

All (7) residues with a non-rotameric sidechain are listed below:

Mol	Chain	Res	Type
1	A	38	GLU
1	A	92	MET
1	A	106	LEU
1	A	145	ASN
1	A	180	ASN
1	A	187	HIS
1	A	189	ARG

Some sidechains can be flipped to improve hydrogen bonding and reduce clashes. All (3) such sidechains are listed below:

Mol	Chain	Res	Type
1	A	3	GLN
1	A	40	ASN
1	A	180	ASN

5.3.3 RNA [i](#)

There are no RNA molecules in this entry.

5.4 Non-standard residues in protein, DNA, RNA chains [i](#)

There are no non-standard protein/DNA/RNA residues in this entry.

5.5 Carbohydrates [i](#)

There are no carbohydrates in this entry.

5.6 Ligand geometry [i](#)

Of 4 ligands modelled in this entry, 2 are monoatomic - leaving 2 for Mogul analysis.

In the following table, the Counts columns list the number of bonds (or angles) for which Mogul statistics could be retrieved, the number of bonds (or angles) that are observed in the model and the number of bonds (or angles) that are defined in the chemical component dictionary. The Link column lists molecule types, if any, to which the group is linked. The Z score for a bond length (or angle) is the number of standard deviations the observed value is removed from the expected value. A bond length (or angle) with $|Z| > 2$ is considered an outlier worth inspection. RMSZ is the root-mean-square of all Z scores of the bond lengths (or angles).

Mol	Type	Chain	Res	Link	Bond lengths			Bond angles		
					Counts	RMSZ	# Z > 2	Counts	RMSZ	# Z > 2
3	SO4	A	301	-	4,4,4	3.22	2 (50%)	6,6,6	0.92	0
4	FMN	A	401	2	32,33,33	1.75	6 (18%)	34,50,50	2.94	8 (23%)

In the following table, the Chirals column lists the number of chiral outliers, the number of chiral centers analysed, the number of these observed in the model and the number defined in the chemical component dictionary. Similar counts are reported in the Torsion and Rings columns. '-' means no outliers of that kind were identified.

Mol	Type	Chain	Res	Link	Chirals	Torsions	Rings
3	SO4	A	301	-	-	0/0/0/0	0/0/0/0
4	FMN	A	401	2	-	0/18/18/18	0/3/3/3

All (8) bond length outliers are listed below:

Mol	Chain	Res	Type	Atoms	Z	Observed(Å)	Ideal(Å)
3	A	301	SO4	O3-S	-4.64	1.31	1.47
4	A	401	FMN	C8-C7	2.72	1.48	1.41
4	A	401	FMN	C4-C4A	2.97	1.47	1.41
4	A	401	FMN	C2-N3	2.98	1.44	1.38
4	A	401	FMN	C6-C5A	3.07	1.46	1.41
4	A	401	FMN	C9A-N10	3.57	1.43	1.38
3	A	301	SO4	O1-S	4.29	1.62	1.47
4	A	401	FMN	C4A-C10	5.46	1.50	1.40

All (8) bond angle outliers are listed below:

Mol	Chain	Res	Type	Atoms	Z	Observed(°)	Ideal(°)
4	A	401	FMN	C4A-C4-N3	-5.88	115.84	123.52
4	A	401	FMN	C4A-C10-N10	-5.47	116.55	120.52
4	A	401	FMN	N3-C2-N1	-5.13	119.06	127.69
4	A	401	FMN	C4-C4A-C10	-4.11	117.31	119.94
4	A	401	FMN	C5A-C9A-N10	-2.40	115.78	117.58
4	A	401	FMN	C6-C5A-C9A	-2.27	116.61	119.11
4	A	401	FMN	C4A-N5-C5A	2.10	119.20	116.72
4	A	401	FMN	C4-N3-C2	12.18	125.32	115.16

There are no chirality outliers.

There are no torsion outliers.

There are no ring outliers.

1 monomer is involved in 1 short contact:

Mol	Chain	Res	Type	Clashes	Symm-Clashes
4	A	401	FMN	1	0

5.7 Other polymers [i](#)

There are no such residues in this entry.

5.8 Polymer linkage issues [i](#)

There are no chain breaks in this entry.

6 Fit of model and data ⓘ

6.1 Protein, DNA and RNA chains ⓘ

EDS was not executed - this section will therefore be empty.

6.2 Non-standard residues in protein, DNA, RNA chains ⓘ

EDS was not executed - this section will therefore be empty.

6.3 Carbohydrates ⓘ

EDS was not executed - this section will therefore be empty.

6.4 Ligands ⓘ

EDS was not executed - this section will therefore be empty.

6.5 Other polymers ⓘ

EDS was not executed - this section will therefore be empty.