



wwPDB X-ray Structure Validation Summary Report ⓘ

Feb 1, 2016 – 08:27 AM GMT

PDB ID : 3EPS
Title : The crystal structure of isocitrate dehydrogenase kinase/phosphatase from E. coli
Authors : Zheng, J.; Jia, Z.; Montreal-Kingston Bacterial Structural Genomics Initiative (BSGI)
Deposited on : 2008-09-29
Resolution : 2.80 Å(reported)

This is a wwPDB X-ray Structure Validation Summary Report for a publicly released PDB entry.
We welcome your comments at validation@mail.wwpdb.org
A user guide is available at
<http://wwpdb.org/validation/2016/XrayValidationReportHelp>
with specific help available everywhere you see the ⓘ symbol.

The following versions of software and data (see [references ⓘ](#)) were used in the production of this report:

MolProbity : 4.02b-467
Mogul : 1.7 (RC4), CSD as536be (2015)
Xtriage (Phenix) : 1.9-1692
EDS : rb-20026688
Percentile statistics : 20151230.v01 (using entries in the PDB archive December 30th 2015)
Refmac : 5.8.0135
CCP4 : 6.5.0
Ideal geometry (proteins) : Engh & Huber (2001)
Ideal geometry (DNA, RNA) : Parkinson et al. (1996)
Validation Pipeline (wwPDB-VP) : trunk26865

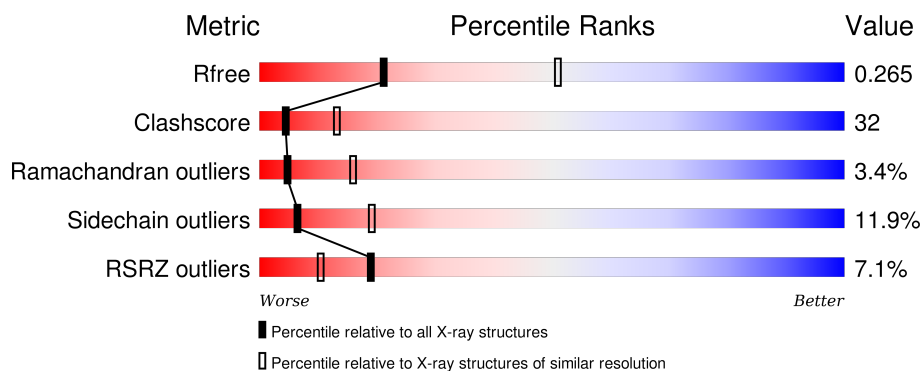
1 Overall quality at a glance ⓘ

The following experimental techniques were used to determine the structure:

X-RAY DIFFRACTION

The reported resolution of this entry is 2.80 Å.

Percentile scores (ranging between 0-100) for global validation metrics of the entry are shown in the following graphic. The table shows the number of entries on which the scores are based.



Metric	Whole archive (#Entries)	Similar resolution (#Entries, resolution range(Å))
R_{free}	91344	2393 (2.80-2.80)
Clashscore	102246	2827 (2.80-2.80)
Ramachandran outliers	100387	2782 (2.80-2.80)
Sidechain outliers	100360	2784 (2.80-2.80)
RSRZ outliers	91569	2404 (2.80-2.80)

The table below summarises the geometric issues observed across the polymeric chains and their fit to the electron density. The red, orange, yellow and green segments on the lower bar indicate the fraction of residues that contain outliers for ≥ 3 , 2, 1 and 0 types of geometric quality criteria. A grey segment represents the fraction of residues that are not modelled. The numeric value for each fraction is indicated below the corresponding segment, with a dot representing fractions $\leq 5\%$. The upper red bar (where present) indicates the fraction of residues that have poor fit to the electron density. The numeric value is given above the bar.

Mol	Chain	Length	Quality of chain
1	A	578	<div> <div>6%</div> <div> <div></div> <div>51%</div> <div>39%</div> <div>7%</div> <div>..</div> </div> </div>
1	B	578	<div> <div>8%</div> <div> <div></div> <div>44%</div> <div>42%</div> <div>11%</div> <div>..</div> </div> </div>

2 Entry composition [i](#)

There are 5 unique types of molecules in this entry. The entry contains 9467 atoms, of which 0 are hydrogens and 0 are deuteriums.

In the tables below, the ZeroOcc column contains the number of atoms modelled with zero occupancy, the AltConf column contains the number of residues with at least one atom in alternate conformation and the Trace column contains the number of residues modelled with at most 2 atoms.

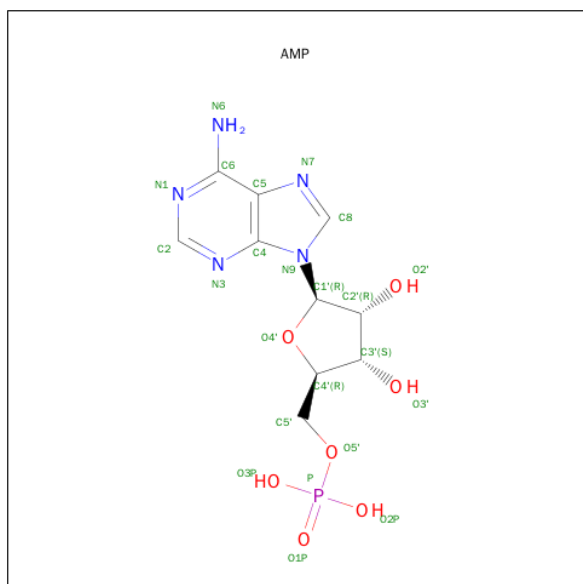
- Molecule 1 is a protein called Isocitrate dehydrogenase kinase/phosphatase.

Mol	Chain	Residues	Atoms					ZeroOcc	AltConf	Trace
1	A	566	Total	C	N	O	S	0	0	0
			4686	3013	827	825	21			
1	B	559	Total	C	N	O	S	0	0	0
			4621	2967	816	817	21			

There are 2 discrepancies between the modelled and reference sequences:

Chain	Residue	Modelled	Actual	Comment	Reference
A	1	SER	-	expression tag	UNP Q8X607
B	1	SER	-	expression tag	UNP Q8X607

- Molecule 2 is ADENOSINE MONOPHOSPHATE (three-letter code: AMP) (formula: C₁₀H₁₄N₅O₇P).



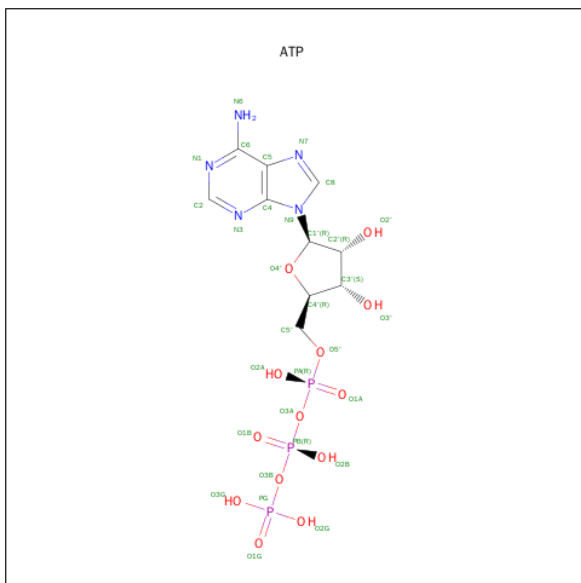
Mol	Chain	Residues	Atoms					ZeroOcc	AltConf
2	A	1	Total	C	N	O	P	0	0
			23	10	5	7	1		

Continued on next page...

Continued from previous page...

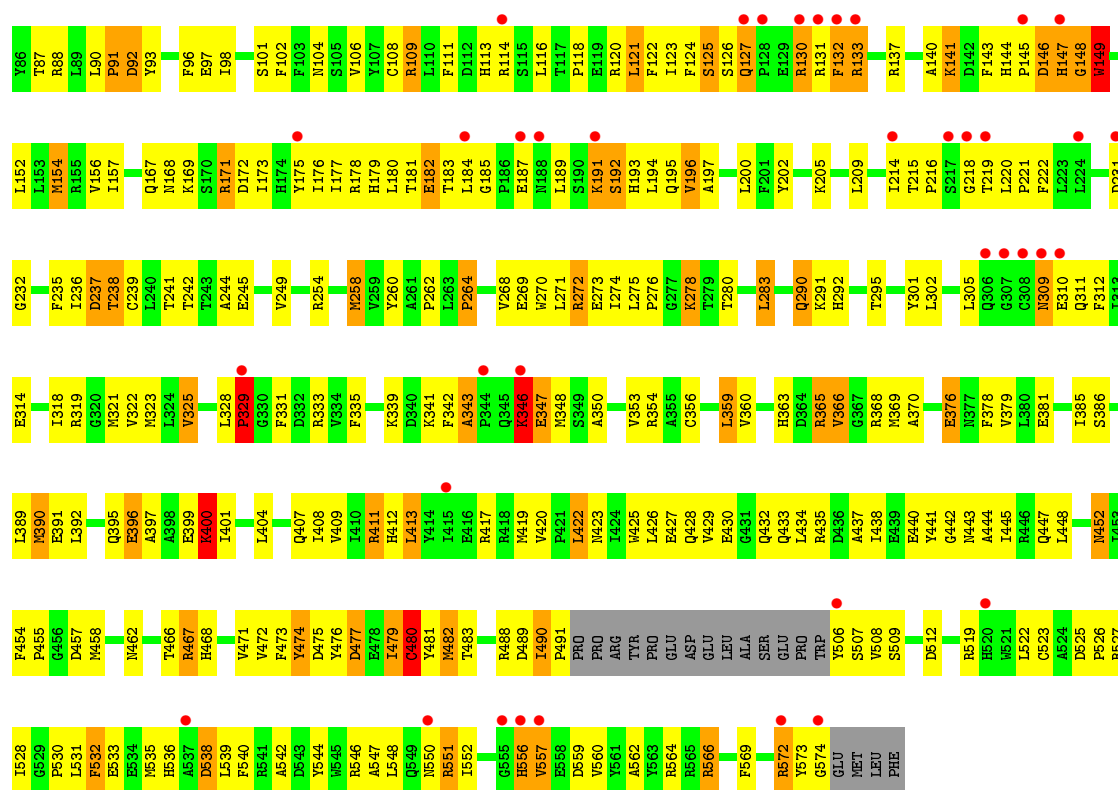
Mol	Chain	Residues	Atoms					ZeroOcc	AltConf
2	B	1	Total	C	N	O	P	0	0
			23	10	5	7	1		

- Molecule 3 is ADENOSINE-5'-TRIPHOSPHATE (three-letter code: ATP) (formula: $C_{10}H_{16}N_5O_{13}P_3$).



Continued from previous page...

Mol	Chain	Residues	Atoms		ZeroOcc	AltConf
5	B	22	Total	O	0	0
			22	22		



4 Data and refinement statistics

Property	Value	Source
Space group	P 41 21 2	Depositor
Cell constants a, b, c, α , β , γ	124.59 Å 124.59 Å 267.63 Å 90.00° 90.00° 90.00°	Depositor
Resolution (Å)	30.00 – 2.80 29.53 – 2.80	Depositor EDS
% Data completeness (in resolution range)	86.5 (30.00-2.80) 94.3 (29.53-2.80)	Depositor EDS
R_{merge}	0.10	Depositor
R_{sym}	(Not available)	Depositor
$\langle I/\sigma(I) \rangle$ ¹	1.76 (at 2.80 Å)	Xtriage
Refinement program	CNS	Depositor
R, R_{free}	0.233 , 0.268 0.236 , 0.265	Depositor DCC
R_{free} test set	2527 reflections (5.09%)	DCC
Wilson B-factor (Å ²)	80.5	Xtriage
Anisotropy	0.047	Xtriage
Bulk solvent k_{sol} (e/Å ³), B_{sol} (Å ²)	0.35 , 60.4	EDS
Estimated twinning fraction	No twinning to report.	Xtriage
L-test for twinning ²	$\langle L \rangle = 0.50$, $\langle L^2 \rangle = 0.33$	Xtriage
Outliers	0 of 49655 reflections	Xtriage
F_o, F_c correlation	0.92	EDS
Total number of atoms	9467	wwPDB-VP
Average B, all atoms (Å ²)	77.0	wwPDB-VP

Xtriage's analysis on translational NCS is as follows: *The largest off-origin peak in the Patterson function is 3.48% of the height of the origin peak. No significant pseudotranslation is detected.*

¹Intensities estimated from amplitudes.

²Theoretical values of $\langle |L| \rangle$, $\langle L^2 \rangle$ for acentric reflections are 0.5, 0.375 respectively for untwinned datasets, and 0.333, 0.2 for perfectly twinned datasets.

5 Model quality [i](#)

5.1 Standard geometry [i](#)

Bond lengths and bond angles in the following residue types are not validated in this section: AMP, MG, ATP

The Z score for a bond length (or angle) is the number of standard deviations the observed value is removed from the expected value. A bond length (or angle) with $|Z| > 5$ is considered an outlier worth inspection. RMSZ is the root-mean-square of all Z scores of the bond lengths (or angles).

Mol	Chain	Bond lengths		Bond angles	
		RMSZ	$\# Z > 5$	RMSZ	$\# Z > 5$
1	A	0.42	0/4815	0.68	3/6523 (0.0%)
1	B	0.39	0/4743	0.61	0/6421
All	All	0.41	0/9558	0.65	3/12944 (0.0%)

There are no bond length outliers.

All (3) bond angle outliers are listed below:

Mol	Chain	Res	Type	Atoms	Z	Observed(°)	Ideal(°)
1	A	359	LEU	CA-CB-CG	6.04	129.19	115.30
1	A	413	LEU	CA-CB-CG	5.40	127.71	115.30
1	A	147	HIS	N-CA-C	-5.10	97.24	111.00

There are no chirality outliers.

There are no planarity outliers.

5.2 Too-close contacts [i](#)

In the following table, the Non-H and H(model) columns list the number of non-hydrogen atoms and hydrogen atoms in the chain respectively. The H(added) column lists the number of hydrogen atoms added and optimized by MolProbity. The Clashes column lists the number of clashes within the asymmetric unit, whereas Symm-Clashes lists symmetry related clashes.

Mol	Chain	Non-H	H(model)	H(added)	Clashes	Symm-Clashes
1	A	4686	0	4603	282	0
1	B	4621	0	4542	324	0
2	A	23	0	12	2	0
2	B	23	0	12	2	0
3	A	31	0	12	5	0
3	B	31	0	12	6	0

Continued on next page...

Continued from previous page...

Mol	Chain	Non-H	H(model)	H(added)	Clashes	Symm-Clashes
4	A	1	0	0	0	0
4	B	1	0	0	0	0
5	A	28	0	0	2	0
5	B	22	0	0	4	0
All	All	9467	0	9193	604	0

The all-atom clashscore is defined as the number of clashes found per 1000 atoms (including hydrogen atoms). The all-atom clashscore for this structure is 32.

The worst 5 of 604 close contacts within the same asymmetric unit are listed below, sorted by their clash magnitude.

Atom-1	Atom-2	Interatomic distance (Å)	Clash overlap (Å)
1:A:242:THR:HB	1:A:245:GLU:HG3	1.22	1.11
1:B:242:THR:HB	1:B:245:GLU:HG3	1.23	1.11
1:B:143:PHE:HB3	1:B:152:LEU:HD11	1.21	1.07
1:A:143:PHE:HB3	1:A:152:LEU:HD11	1.44	0.99
1:A:135:ILE:H	1:A:135:ILE:HD12	1.26	0.99

There are no symmetry-related clashes.

5.3 Torsion angles [i](#)

5.3.1 Protein backbone [i](#)

In the following table, the Percentiles column shows the percent Ramachandran outliers of the chain as a percentile score with respect to all X-ray entries followed by that with respect to entries of similar resolution.

The Analysed column shows the number of residues for which the backbone conformation was analysed, and the total number of residues.

Mol	Chain	Analysed	Favoured	Allowed	Outliers	Percentiles	
1	A	562/578 (97%)	494 (88%)	54 (10%)	14 (2%)	7	24
1	B	555/578 (96%)	458 (82%)	73 (13%)	24 (4%)	3	10
All	All	1117/1156 (97%)	952 (85%)	127 (11%)	38 (3%)	5	16

5 of 38 Ramachandran outliers are listed below:

Mol	Chain	Res	Type
1	A	132	PHE
1	A	138	PRO
1	A	484	GLU
1	B	132	PHE
1	B	133	ARG

5.3.2 Protein sidechains ⓘ

In the following table, the Percentiles column shows the percent sidechain outliers of the chain as a percentile score with respect to all X-ray entries followed by that with respect to entries of similar resolution.

The Analysed column shows the number of residues for which the sidechain conformation was analysed, and the total number of residues.

Mol	Chain	Analysed	Rotameric	Outliers	Percentiles	
1	A	497/508 (98%)	442 (89%)	55 (11%)	8	23
1	B	490/508 (96%)	428 (87%)	62 (13%)	5	16
All	All	987/1016 (97%)	870 (88%)	117 (12%)	6	19

5 of 117 residues with a non-rotameric sidechain are listed below:

Mol	Chain	Res	Type
1	A	532	PHE
1	B	92	ASP
1	B	480	CYS
1	A	566	ARG
1	B	37	GLN

Some sidechains can be flipped to improve hydrogen bonding and reduce clashes. 5 of 47 such sidechains are listed below:

Mol	Chain	Res	Type
1	A	447	GLN
1	B	70	ASN
1	B	447	GLN
1	B	15	GLN
1	B	72	GLN

5.3.3 RNA ⓘ

There are no RNA molecules in this entry.

5.4 Non-standard residues in protein, DNA, RNA chains [i](#)

There are no non-standard protein/DNA/RNA residues in this entry.

5.5 Carbohydrates [i](#)

There are no carbohydrates in this entry.

5.6 Ligand geometry [i](#)

Of 6 ligands modelled in this entry, 2 are monoatomic - leaving 4 for Mogul analysis.

In the following table, the Counts columns list the number of bonds (or angles) for which Mogul statistics could be retrieved, the number of bonds (or angles) that are observed in the model and the number of bonds (or angles) that are defined in the chemical component dictionary. The Link column lists molecule types, if any, to which the group is linked. The Z score for a bond length (or angle) is the number of standard deviations the observed value is removed from the expected value. A bond length (or angle) with $|Z| > 2$ is considered an outlier worth inspection. RMSZ is the root-mean-square of all Z scores of the bond lengths (or angles).

Mol	Type	Chain	Res	Link	Bond lengths			Bond angles		
					Counts	RMSZ	# $ Z > 2$	Counts	RMSZ	# $ Z > 2$
2	AMP	A	1604	-	20,25,25	2.14	2 (10%)	22,38,38	2.74	5 (22%)
3	ATP	A	1605	4	24,33,33	1.27	2 (8%)	31,52,52	3.48	7 (22%)
2	AMP	B	1604	-	20,25,25	2.37	2 (10%)	22,38,38	2.75	3 (13%)
3	ATP	B	1605	4	24,33,33	1.19	2 (8%)	31,52,52	3.41	6 (19%)

In the following table, the Chirals column lists the number of chiral outliers, the number of chiral centers analysed, the number of these observed in the model and the number defined in the chemical component dictionary. Similar counts are reported in the Torsion and Rings columns. '-' means no outliers of that kind were identified.

Mol	Type	Chain	Res	Link	Chirals	Torsions	Rings
2	AMP	A	1604	-	-	0/6/26/26	0/3/3/3
3	ATP	A	1605	4	-	0/18/38/38	0/3/3/3
2	AMP	B	1604	-	-	0/6/26/26	0/3/3/3
3	ATP	B	1605	4	-	0/18/38/38	0/3/3/3

The worst 5 of 8 bond length outliers are listed below:

Mol	Chain	Res	Type	Atoms	Z	Observed(Å)	Ideal(Å)
3	B	1605	ATP	C8-N7	-2.22	1.30	1.34
3	A	1605	ATP	C8-N7	-2.14	1.30	1.34

Continued on next page...

Continued from previous page...

Mol	Chain	Res	Type	Atoms	Z	Observed(Å)	Ideal(Å)
3	B	1605	ATP	O4'-C1'	2.77	1.44	1.41
3	A	1605	ATP	O4'-C1'	3.63	1.45	1.41
2	A	1604	AMP	O4'-C1'	3.94	1.46	1.41

The worst 5 of 21 bond angle outliers are listed below:

Mol	Chain	Res	Type	Atoms	Z	Observed(°)	Ideal(°)
3	A	1605	ATP	PA-O3A-PB	-11.83	99.52	132.73
2	B	1604	AMP	N3-C2-N1	-11.46	120.12	128.89
3	B	1605	ATP	PA-O3A-PB	-11.23	101.20	132.73
2	A	1604	AMP	N3-C2-N1	-11.14	120.37	128.89
3	B	1605	ATP	N3-C2-N1	-9.62	121.53	128.89

There are no chirality outliers.

There are no torsion outliers.

There are no ring outliers.

4 monomers are involved in 15 short contacts:

Mol	Chain	Res	Type	Clashes	Symm-Clashes
2	A	1604	AMP	2	0
3	A	1605	ATP	5	0
2	B	1604	AMP	2	0
3	B	1605	ATP	6	0

5.7 Other polymers [i](#)

There are no such residues in this entry.

5.8 Polymer linkage issues [i](#)

There are no chain breaks in this entry.

6 Fit of model and data [i](#)

6.1 Protein, DNA and RNA chains [i](#)

In the following table, the column labelled ‘#RSRZ> 2’ contains the number (and percentage) of RSRZ outliers, followed by percent RSRZ outliers for the chain as percentile scores relative to all X-ray entries and entries of similar resolution. The OWAB column contains the minimum, median, 95th percentile and maximum values of the occupancy-weighted average B-factor per residue. The column labelled ‘Q< 0.9’ lists the number of (and percentage) of residues with an average occupancy less than 0.9.

Mol	Chain	Analysed	<RSRZ>	#RSRZ>2	OWAB(Å ²)	Q<0.9
1	A	566/578 (97%)	0.25	35 (6%) 24 15	46, 68, 104, 144	0
1	B	559/578 (96%)	0.45	45 (8%) 15 7	46, 79, 117, 139	0
All	All	1125/1156 (97%)	0.35	80 (7%) 19 10	46, 74, 112, 144	0

The worst 5 of 80 RSRZ outliers are listed below:

Mol	Chain	Res	Type	RSRZ
1	B	74	THR	6.8
1	B	73	SER	5.9
1	A	496	PRO	5.8
1	B	556	HIS	5.6
1	B	308	CYS	5.2

6.2 Non-standard residues in protein, DNA, RNA chains [i](#)

There are no non-standard protein/DNA/RNA residues in this entry.

6.3 Carbohydrates [i](#)

There are no carbohydrates in this entry.

6.4 Ligands [i](#)

In the following table, the Atoms column lists the number of modelled atoms in the group and the number defined in the chemical component dictionary. LLDF column lists the quality of electron density of the group with respect to its neighbouring residues in protein, DNA or RNA chains. The B-factors column lists the minimum, median, 95th percentile and maximum values of B factors of atoms in the group. The column labelled ‘Q< 0.9’ lists the number of atoms with occupancy less than 0.9.

Mol	Type	Chain	Res	Atoms	RSCC	RSR	LLDF	B-factors(\AA^2)	Q<0.9
2	AMP	A	1604	23/23	0.96	0.21	0.81	49,55,57,61	0
3	ATP	B	1605	31/31	0.89	0.25	0.54	47,59,77,77	0
3	ATP	A	1605	31/31	0.92	0.22	0.32	43,51,77,77	0
2	AMP	B	1604	23/23	0.95	0.21	-0.02	63,68,77,82	0
4	MG	B	1606	1/1	0.93	0.39	-	53,53,53,53	0
4	MG	A	1606	1/1	0.93	0.29	-	44,44,44,44	0

6.5 Other polymers [i](#)

There are no such residues in this entry.