



# wwPDB X-ray Structure Validation Summary Report ⓘ

Jan 31, 2016 – 07:16 PM GMT

PDB ID : 1ETH  
Title : TRIACYLGLYCEROL LIPASE/COLIPASE COMPLEX  
Authors : Hermoso, J.; Pignol, D.; Kerfelec, B.; Crenon, I.; Chapus, C.; Fontecilla-Camps, J.C.  
Deposited on : 1995-09-13  
Resolution : 2.80 Å(reported)

This is a wwPDB X-ray Structure Validation Summary Report for a publicly released PDB entry.  
We welcome your comments at [validation@mail.wwpdb.org](mailto:validation@mail.wwpdb.org)  
A user guide is available at  
<http://wwpdb.org/validation/2016/XrayValidationReportHelp>  
with specific help available everywhere you see the ⓘ symbol.

---

The following versions of software and data (see [references ⓘ](#)) were used in the production of this report:

MolProbity : 4.02b-467  
Mogul : 1.7 (RC4), CSD as536be (2015)  
Xtriage (Phenix) : **NOT EXECUTED**  
EDS : **NOT EXECUTED**  
Percentile statistics : 20151230.v01 (using entries in the PDB archive December 30th 2015)  
Ideal geometry (proteins) : Engh & Huber (2001)  
Ideal geometry (DNA, RNA) : Parkinson et al. (1996)  
Validation Pipeline (wwPDB-VP) : trunk26865

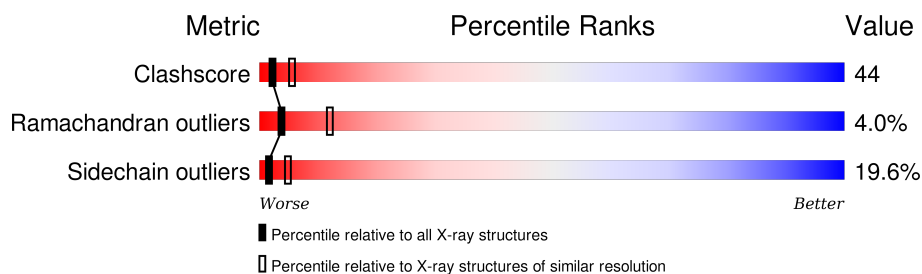
# 1 Overall quality at a glance

The following experimental techniques were used to determine the structure:

## *X-RAY DIFFRACTION*

The reported resolution of this entry is 2.80 Å.

Percentile scores (ranging between 0-100) for global validation metrics of the entry are shown in the following graphic. The table shows the number of entries on which the scores are based.



Metric	Whole archive (#Entries)	Similar resolution (#Entries, resolution range(Å))
Clashscore	102246	2827 (2.80-2.80)
Ramachandran outliers	100387	2782 (2.80-2.80)
Sidechain outliers	100360	2784 (2.80-2.80)

The table below summarises the geometric issues observed across the polymeric chains and their fit to the electron density. The red, orange, yellow and green segments on the lower bar indicate the fraction of residues that contain outliers for  $\geq 3$ , 2, 1 and 0 types of geometric quality criteria. A grey segment represents the fraction of residues that are not modelled. The numeric value for each fraction is indicated below the corresponding segment, with a dot representing fractions  $\leq 5\%$ . The upper red bar (where present) indicates the fraction of residues that have poor fit to the electron density. The numeric value is given above the bar.

Note EDS was not executed.

Mol	Chain	Length	Quality of chain
1	A	448	
1	C	448	
2	B	95	
2	D	95	

The following table lists non-polymeric compounds, carbohydrate monomers and non-standard residues in protein, DNA, RNA chains that are outliers for geometric or electron-density-fit criteria:

Mol	Type	Chain	Res	Chirality	Geometry	Clashes	Electron density
3	NAG	A	450	X	-	X	-
3	NAG	A	451	-	-	X	-
3	BMA	A	453	X	-	-	-
3	BMA	A	454	X	-	-	-
3	BMA	C	453	X	-	-	-
3	BMA	C	454	X	-	-	-
6	BME	C	457	-	-	X	-

## 2 Entry composition

There are 7 unique types of molecules in this entry. The entry contains 11761 atoms, of which 2850 are hydrogens and 0 are deuteriums.

In the tables below, the ZeroOcc column contains the number of atoms modelled with zero occupancy, the AltConf column contains the number of residues with at least one atom in alternate conformation and the Trace column contains the number of residues modelled with at most 2 atoms.

- Molecule 1 is a protein called TRIACYLGLYCEROL ACYL-HYDROLASE.

Mol	Chain	Residues	Atoms						ZeroOcc	AltConf	Trace
1	A	448	Total	C	H	N	O	S	0	0	0
			4301	2219	788	606	670	18			
1	C	448	Total	C	H	N	O	S	0	0	0
			4301	2219	788	606	670	18			

There are 4 discrepancies between the modelled and reference sequences:

Chain	Residue	Modelled	Actual	Comment	Reference
A	?	-	ASN	DELETION	UNP P00591
A	?	-	ASN	DELETION	UNP P00591
C	?	-	ASN	DELETION	UNP P00591
C	?	-	ASN	DELETION	UNP P00591

- Molecule 2 is a protein called COLIPASE.

Mol	Chain	Residues	Atoms						ZeroOcc	AltConf	Trace
2	B	87	Total	C	H	N	O	S	0	0	0
			811	400	155	116	130	10			
2	D	87	Total	C	H	N	O	S	0	0	0
			811	400	155	116	130	10			

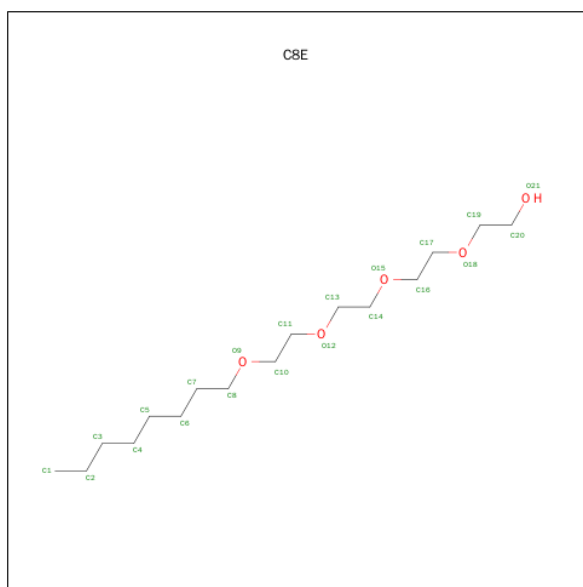
- Molecule 3 is a polymer of unknown type called SUGAR (5-MER).

Mol	Chain	Residues	Atoms					ZeroOcc	AltConf
3	C	5	Total	C	H	N	O	0	0
			118	34	57	2	25		
3	A	5	Total	C	H	N	O	0	0
			118	34	57	2	25		

- Molecule 4 is CALCIUM ION (three-letter code: CA) (formula: Ca).

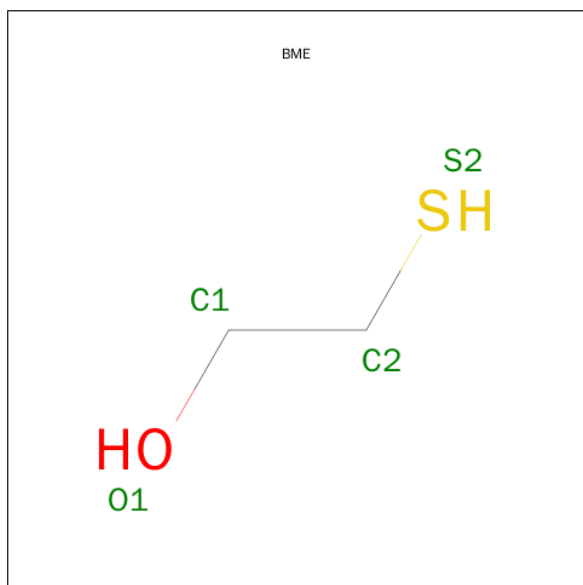
Mol	Chain	Residues	Atoms	ZeroOcc	AltConf
4	A	1	Total Ca 1 1	0	0
4	C	1	Total Ca 1 1	0	0

- Molecule 5 is (HYDROXYETHYLOXY)TRI(ETHYLOXY)OCTANE (three-letter code: C8E) (formula:  $C_{16}H_{34}O_5$ ).



Mol	Chain	Residues	Atoms	ZeroOcc	AltConf
5	A	1	Total C H O 55 16 34 5	0	0
5	A	1	Total C H O 55 16 34 5	0	0
5	C	1	Total C H O 55 16 34 5	0	0
5	C	1	Total C H O 55 16 34 5	0	0

- Molecule 6 is BETA-MERCAPTOETHANOL (three-letter code: BME) (formula:  $C_2H_6OS$ ).



Mol	Chain	Residues	Atoms				ZeroOcc	AltConf
6	A	1	Total	C	O	S	0	0
			4	2	1	1		
6	C	1	Total	C	O	S	0	0
			4	2	1	1		

- Molecule 7 is water.

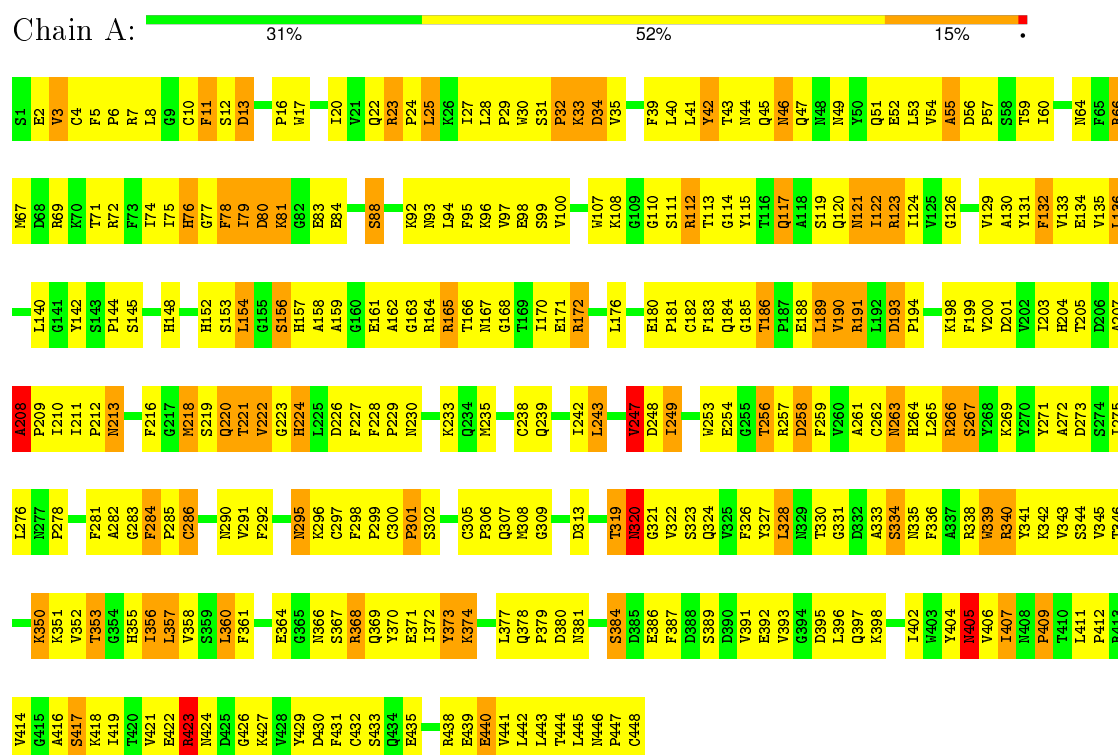
Mol	Chain	Residues	Atoms			ZeroOcc	AltConf
7	A	128	Total	H	O	0	0
			384	256	128		
7	B	31	Total	H	O	0	0
			93	62	31		
7	C	166	Total	H	O	0	0
			498	332	166		
7	D	32	Total	H	O	0	0
			96	64	32		

### 3 Residue-property plots

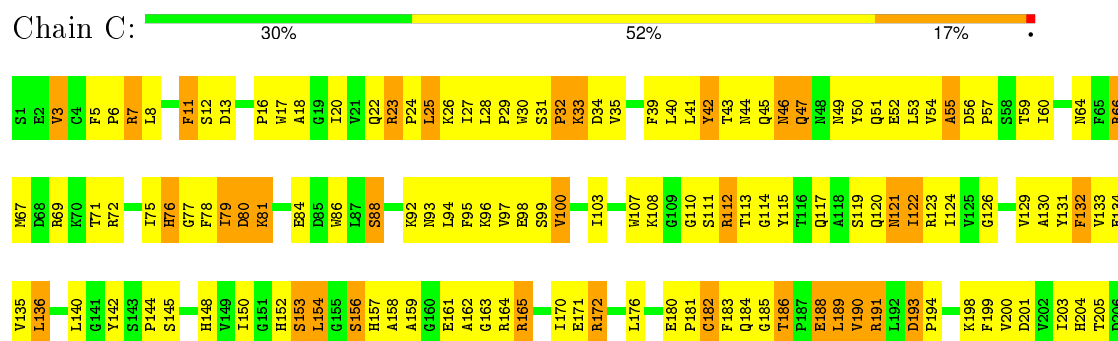
These plots are drawn for all protein, RNA and DNA chains in the entry. The first graphic for a chain summarises the proportions of errors displayed in the second graphic. The second graphic shows the sequence view annotated by issues in geometry and electron density. Residues are color-coded according to the number of geometric quality criteria for which they contain at least one outlier: green = 0, yellow = 1, orange = 2 and red = 3 or more. A red dot above a residue indicates a poor fit to the electron density ( $RSRZ > 2$ ). Stretches of 2 or more consecutive residues without any outlier are shown as a green connector. Residues present in the sample, but not in the model, are shown in grey.

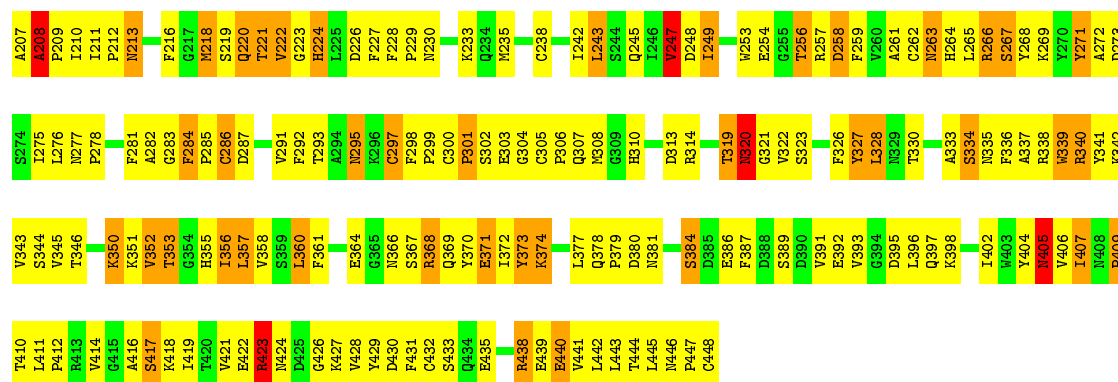
Note EDS was not executed.

#### • Molecule 1: TRIACYLGLYCEROL ACYL-HYDROLASE

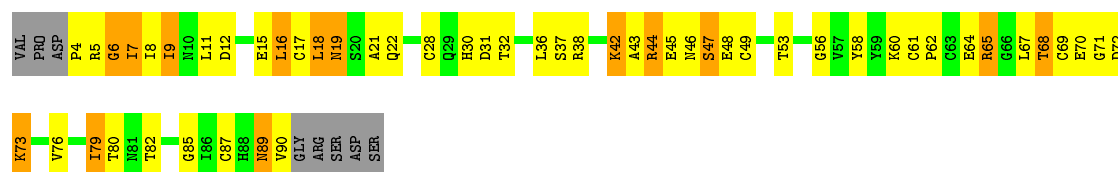


#### • Molecule 1: TRIACYLGLYCEROL ACYL-HYDROLASE

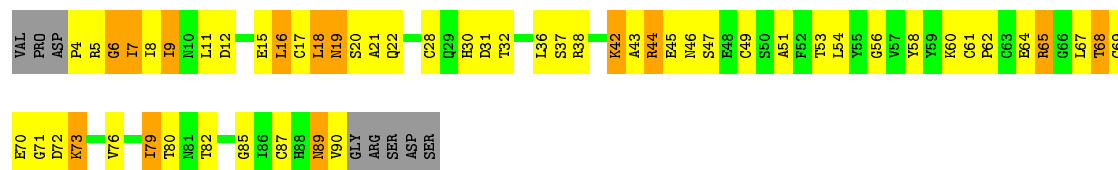




### • Molecule 2: COLIPASE



### • Molecule 2: COLIPASE





## 4 Data and refinement statistics

Xtriage (Phenix) and EDS were not executed - this section will therefore be incomplete.

Property	Value	Source
Space group	F 2 3	Depositor
Cell constants a, b, c, $\alpha$ , $\beta$ , $\gamma$	289.10 Å   289.10 Å   289.10 Å 90.00°   90.00°   90.00°	Depositor
Resolution (Å)	6.00 – 2.80	Depositor
% Data completeness (in resolution range)	(Not available) (6.00-2.80)	Depositor
$R_{merge}$	0.13	Depositor
$R_{sym}$	(Not available)	Depositor
Refinement program	X-PLOR 3.1	Depositor
R, $R_{free}$	0.210 , 0.290	Depositor
Estimated twinning fraction	No twinning to report.	Xtriage
Total number of atoms	11761	wwPDB-VP
Average B, all atoms (Å <sup>2</sup> )	21.0	wwPDB-VP

## 5 Model quality

### 5.1 Standard geometry

Bond lengths and bond angles in the following residue types are not validated in this section: C8E, CA, BMA, NAG, BME

The Z score for a bond length (or angle) is the number of standard deviations the observed value is removed from the expected value. A bond length (or angle) with  $|Z| > 5$  is considered an outlier worth inspection. RMSZ is the root-mean-square of all Z scores of the bond lengths (or angles).

Mol	Chain	Bond lengths		Bond angles	
		RMSZ	$\# Z  > 5$	RMSZ	$\# Z  > 5$
1	A	0.55	0/3602	0.71	1/4892 (0.0%)
1	C	0.55	0/3602	0.70	0/4892
2	B	0.56	0/664	0.72	0/894
2	D	0.56	0/664	0.73	0/894
All	All	0.55	0/8532	0.71	1/11572 (0.0%)

Chiral center outliers are detected by calculating the chiral volume of a chiral center and verifying if the center is modelled as a planar moiety or with the opposite hand. A planarity outlier is detected by checking planarity of atoms in a peptide group, atoms in a mainchain group or atoms of a sidechain that are expected to be planar.

Mol	Chain	#Chirality outliers	#Planarity outliers
1	A	0	17
1	C	0	18
3	A	3	0
3	C	2	0
All	All	5	35

There are no bond length outliers.

All (1) bond angle outliers are listed below:

Mol	Chain	Res	Type	Atoms	Z	Observed(°)	Ideal(°)
1	A	123	ARG	NE-CZ-NH2	-5.07	117.76	120.30

All (5) chirality outliers are listed below:

Mol	Chain	Res	Type	Atom
3	A	450	NAG	C1
3	A	453	BMA	C1
3	A	454	BMA	C1

*Continued on next page...*

*Continued from previous page...*

Mol	Chain	Res	Type	Atom
3	C	453	BMA	C1
3	C	454	BMA	C1

5 of 35 planarity outliers are listed below:

Mol	Chain	Res	Type	Group
1	A	11	PHE	Sidechain
1	A	115	TYR	Sidechain
1	A	2	GLU	Mainchain
1	A	208	ALA	Mainchain
1	A	42	TYR	Sidechain

## 5.2 Too-close contacts

In the following table, the Non-H and H(model) columns list the number of non-hydrogen atoms and hydrogen atoms in the chain respectively. The H(added) column lists the number of hydrogen atoms added and optimized by MolProbity. The Clashes column lists the number of clashes within the asymmetric unit, whereas Symm-Clashes lists symmetry related clashes.

Mol	Chain	Non-H	H(model)	H(added)	Clashes	Symm-Clashes
1	A	3513	788	3370	304	0
1	C	3513	788	3370	318	0
2	B	656	155	631	56	0
2	D	656	155	631	57	0
3	A	61	57	51	12	0
3	C	61	57	51	8	0
4	A	1	0	0	0	0
4	C	1	0	0	0	0
5	A	42	68	50	1	0
5	C	42	68	49	1	0
6	A	4	0	6	2	0
6	C	4	0	6	5	0
7	A	128	256	0	20	0
7	B	31	62	0	5	0
7	C	166	332	0	30	0
7	D	32	64	0	7	0
All	All	8911	2850	8215	737	0

The all-atom clashscore is defined as the number of clashes found per 1000 atoms (including hydrogen atoms). The all-atom clashscore for this structure is 44.

The worst 5 of 737 close contacts within the same asymmetric unit are listed below, sorted by

their clash magnitude.

Atom-1	Atom-2	Interatomic distance (Å)	Clash overlap (Å)
1:C:182:CYS:SG	6:C:457:BME:S2	2.35	1.13
1:A:182:CYS:SG	6:A:457:BME:S2	2.39	1.05
1:C:108:LYS:HB2	1:C:112:ARG:HH12	1.23	1.00
1:A:108:LYS:HB2	1:A:112:ARG:HH12	1.25	1.00
1:C:356:ILE:HD11	1:C:373:TYR:HB3	1.43	0.99

There are no symmetry-related clashes.

## 5.3 Torsion angles [i](#)

### 5.3.1 Protein backbone [i](#)

In the following table, the Percentiles column shows the percent Ramachandran outliers of the chain as a percentile score with respect to all X-ray entries followed by that with respect to entries of similar resolution.

The Analysed column shows the number of residues for which the backbone conformation was analysed, and the total number of residues.

Mol	Chain	Analysed	Favoured	Allowed	Outliers	Percentiles	
1	A	446/448 (100%)	361 (81%)	66 (15%)	19 (4%)	3	10
1	C	446/448 (100%)	363 (81%)	63 (14%)	20 (4%)	3	10
2	B	85/95 (90%)	75 (88%)	8 (9%)	2 (2%)	7	25
2	D	85/95 (90%)	76 (89%)	7 (8%)	2 (2%)	7	25
All	All	1062/1086 (98%)	875 (82%)	144 (14%)	43 (4%)	4	12

5 of 43 Ramachandran outliers are listed below:

Mol	Chain	Res	Type
1	A	6	PRO
1	A	23	ARG
1	A	186	THR
1	C	23	ARG
1	C	186	THR

### 5.3.2 Protein sidechains [i](#)

In the following table, the Percentiles column shows the percent sidechain outliers of the chain as a percentile score with respect to all X-ray entries followed by that with respect to entries of similar resolution.

The Analysed column shows the number of residues for which the sidechain conformation was analysed, and the total number of residues.

Mol	Chain	Analysed	Rotameric	Outliers	Percentiles	
1	A	388/388 (100%)	311 (80%)	77 (20%)	1	5
1	C	388/388 (100%)	311 (80%)	77 (20%)	1	5
2	B	76/83 (92%)	62 (82%)	14 (18%)	2	6
2	D	76/83 (92%)	62 (82%)	14 (18%)	2	6
All	All	928/942 (98%)	746 (80%)	182 (20%)	1	5

5 of 182 residues with a non-rotameric sidechain are listed below:

Mol	Chain	Res	Type
2	B	31	ASP
1	C	80	ASP
2	D	9	ILE
2	B	44	ARG
1	C	7	ARG

Some sidechains can be flipped to improve hydrogen bonding and reduce clashes. 5 of 26 such sidechains are listed below:

Mol	Chain	Res	Type
1	A	381	ASN
1	C	46	ASN
2	D	81	ASN
2	B	81	ASN
2	B	89	ASN

### 5.3.3 RNA [i](#)

There are no RNA molecules in this entry.

## 5.4 Non-standard residues in protein, DNA, RNA chains [i](#)

There are no non-standard protein/DNA/RNA residues in this entry.

## 5.5 Carbohydrates ⓘ

10 carbohydrates are modelled in this entry.

In the following table, the Counts columns list the number of bonds (or angles) for which Mogul statistics could be retrieved, the number of bonds (or angles) that are observed in the model and the number of bonds (or angles) that are defined in the chemical component dictionary. The Link column lists molecule types, if any, to which the group is linked. The Z score for a bond length (or angle) is the number of standard deviations the observed value is removed from the expected value. A bond length (or angle) with  $|Z| > 2$  is considered an outlier worth inspection. RMSZ is the root-mean-square of all Z scores of the bond lengths (or angles).

Mol	Type	Chain	Res	Link	Bond lengths			Bond angles		
					Counts	RMSZ	# $ Z  > 2$	Counts	RMSZ	# $ Z  > 2$
3	NAG	A	450	1,3	14,14,15	3.04	6 (42%)	15,19,21	5.21	10 (66%)
3	NAG	A	451	3	14,14,15	3.21	8 (57%)	15,19,21	3.41	8 (53%)
3	BMA	A	452	3	11,11,12	2.47	3 (27%)	14,15,17	2.94	9 (64%)
3	BMA	A	453	3	11,11,12	3.40	5 (45%)	14,15,17	2.49	7 (50%)
3	BMA	A	454	3	11,11,12	2.27	4 (36%)	14,15,17	3.50	8 (57%)
3	NAG	C	450	1,3	14,14,15	1.66	3 (21%)	15,19,21	3.57	8 (53%)
3	NAG	C	451	3	14,14,15	2.83	5 (35%)	15,19,21	4.57	9 (60%)
3	BMA	C	452	3	11,11,12	2.76	6 (54%)	14,15,17	3.47	6 (42%)
3	BMA	C	453	3	11,11,12	2.74	5 (45%)	14,15,17	2.24	4 (28%)
3	BMA	C	454	3	11,11,12	2.43	6 (54%)	14,15,17	4.30	10 (71%)

In the following table, the Chirals column lists the number of chiral outliers, the number of chiral centers analysed, the number of these observed in the model and the number defined in the chemical component dictionary. Similar counts are reported in the Torsion and Rings columns. '-' means no outliers of that kind were identified.

Mol	Type	Chain	Res	Link	Chirals	Torsions	Rings
3	NAG	A	450	1,3	1/1/7/7	0/6/23/26	0/1/1/1
3	NAG	A	451	3	-	0/6/23/26	0/1/1/1
3	BMA	A	452	3	-	0/2/19/22	0/1/1/1
3	BMA	A	453	3	1/1/5/5	0/2/19/22	1/1/1/1
3	BMA	A	454	3	1/1/5/5	0/2/19/22	0/1/1/1
3	NAG	C	450	1,3	-	0/6/23/26	0/1/1/1
3	NAG	C	451	3	-	0/6/23/26	0/1/1/1
3	BMA	C	452	3	-	0/2/19/22	0/1/1/1
3	BMA	C	453	3	1/1/5/5	0/2/19/22	1/1/1/1
3	BMA	C	454	3	1/1/5/5	0/2/19/22	0/1/1/1

The worst 5 of 51 bond length outliers are listed below:

Mol	Chain	Res	Type	Atoms	Z	Observed(Å)	Ideal(Å)
3	A	451	NAG	C4-C5	-4.48	1.43	1.53
3	A	451	NAG	O5-C5	-2.89	1.37	1.43
3	A	451	NAG	O5-C1	-2.85	1.39	1.43
3	C	454	BMA	C2-C3	-2.83	1.48	1.52
3	C	450	NAG	C1-C2	2.02	1.55	1.52

The worst 5 of 79 bond angle outliers are listed below:

Mol	Chain	Res	Type	Atoms	Z	Observed(°)	Ideal(°)
3	A	450	NAG	C2-N2-C7	-12.69	106.73	123.04
3	C	454	BMA	C2-C3-C4	-7.97	97.50	111.04
3	C	451	NAG	C3-C4-C5	-7.80	96.60	110.20
3	C	454	BMA	C3-C4-C5	-7.42	97.27	110.20
3	A	450	NAG	C4-C3-C2	-6.85	100.58	111.23

All (5) chirality outliers are listed below:

Mol	Chain	Res	Type	Atom
3	C	453	BMA	C1
3	A	453	BMA	C1
3	A	450	NAG	C1
3	C	454	BMA	C1
3	A	454	BMA	C1

There are no torsion outliers.

All (2) ring outliers are listed below:

Mol	Chain	Res	Type	Atoms
3	C	453	BMA	C1-C2-C3-C4-C5-O5
3	A	453	BMA	C1-C2-C3-C4-C5-O5

7 monomers are involved in 20 short contacts:

Mol	Chain	Res	Type	Clashes	Symm-Clashes
3	A	450	NAG	9	0
3	A	451	NAG	7	0
3	A	454	BMA	2	0
3	C	450	NAG	4	0
3	C	451	NAG	6	0
3	C	452	BMA	2	0
3	C	454	BMA	2	0

## 5.6 Ligand geometry

Of 8 ligands modelled in this entry, 2 are monoatomic - leaving 6 for Mogul analysis.

In the following table, the Counts columns list the number of bonds (or angles) for which Mogul statistics could be retrieved, the number of bonds (or angles) that are observed in the model and the number of bonds (or angles) that are defined in the chemical component dictionary. The Link column lists molecule types, if any, to which the group is linked. The Z score for a bond length (or angle) is the number of standard deviations the observed value is removed from the expected value. A bond length (or angle) with  $|Z| > 2$  is considered an outlier worth inspection. RMSZ is the root-mean-square of all Z scores of the bond lengths (or angles).

Mol	Type	Chain	Res	Link	Bond lengths			Bond angles		
					Counts	RMSZ	# $ Z  > 2$	Counts	RMSZ	# $ Z  > 2$
5	C8E	A	455	5	20,20,20	1.04	1 (5%)	19,19,19	0.87	0
5	C8E	A	456	5	20,20,20	1.11	1 (5%)	19,19,19	1.01	1 (5%)
6	BME	A	457	-	3,3,3	0.34	0	2,2,2	0.12	0
5	C8E	C	455	5	20,20,20	0.94	1 (5%)	19,19,19	0.98	1 (5%)
5	C8E	C	456	5	20,20,20	1.26	1 (5%)	19,19,19	1.07	1 (5%)
6	BME	C	457	-	3,3,3	0.59	0	2,2,2	0.19	0

In the following table, the Chirals column lists the number of chiral outliers, the number of chiral centers analysed, the number of these observed in the model and the number defined in the chemical component dictionary. Similar counts are reported in the Torsion and Rings columns. '-' means no outliers of that kind were identified.

Mol	Type	Chain	Res	Link	Chirals	Torsions	Rings
5	C8E	A	455	5	-	0/18/18/18	0/0/0/0
5	C8E	A	456	5	-	0/18/18/18	0/0/0/0
6	BME	A	457	-	-	0/1/1/1	0/0/0/0
5	C8E	C	455	5	-	0/18/18/18	0/0/0/0
5	C8E	C	456	5	-	0/18/18/18	0/0/0/0
6	BME	C	457	-	-	0/1/1/1	0/0/0/0

All (4) bond length outliers are listed below:

Mol	Chain	Res	Type	Atoms	Z	Observed(Å)	Ideal(Å)
5	A	456	C8E	O21-C20	-2.25	1.29	1.42
5	A	455	C8E	O21-C20	-2.14	1.30	1.42
5	C	456	C8E	O21-C20	-2.10	1.30	1.42
5	C	455	C8E	O21-C20	-2.08	1.30	1.42

All (3) bond angle outliers are listed below:



Mol	Chain	Res	Type	Atoms	Z	Observed( $^{\circ}$ )	Ideal( $^{\circ}$ )
5	C	455	C8E	O18-C17-C16	-2.11	101.00	110.36
5	A	456	C8E	O21-C20-C19	2.13	125.18	112.03
5	C	456	C8E	C19-O18-C17	2.21	122.80	113.31

There are no chirality outliers.

There are no torsion outliers.

There are no ring outliers.

4 monomers are involved in 9 short contacts:

Mol	Chain	Res	Type	Clashes	Symm-Clashes
5	A	455	C8E	1	0
6	A	457	BME	2	0
5	C	456	C8E	1	0
6	C	457	BME	5	0

## 5.7 Other polymers [i](#)

There are no such residues in this entry.

## 5.8 Polymer linkage issues [i](#)

There are no chain breaks in this entry.

## 6 Fit of model and data ⓘ

### 6.1 Protein, DNA and RNA chains ⓘ

EDS was not executed - this section will therefore be empty.

### 6.2 Non-standard residues in protein, DNA, RNA chains ⓘ

EDS was not executed - this section will therefore be empty.

### 6.3 Carbohydrates ⓘ

EDS was not executed - this section will therefore be empty.

### 6.4 Ligands ⓘ

EDS was not executed - this section will therefore be empty.

### 6.5 Other polymers ⓘ

EDS was not executed - this section will therefore be empty.