



Full wwPDB X-ray Structure Validation Report ⓘ

Feb 1, 2016 – 08:28 AM GMT

PDB ID : 3ET1
Title : Structure of PPARalpha with 3-[5-Methoxy-1-(4-methoxy-benzenesulfonyl)-1H-indol-3-yl]-propionic acid
Authors : Zhang, K.Y.J.; Wang, W.
Deposited on : 2008-10-06
Resolution : 2.50 Å(reported)

This is a Full wwPDB X-ray Structure Validation Report for a publicly released PDB entry.
We welcome your comments at validation@mail.wwpdb.org
A user guide is available at
<http://wwpdb.org/validation/2016/XrayValidationReportHelp>
with specific help available everywhere you see the ⓘ symbol.

The following versions of software and data (see [references ⓘ](#)) were used in the production of this report:

MolProbity : 4.02b-467
Mogul : 1.7 (RC4), CSD as536be (2015)
Xtriage (Phenix) : 1.9-1692
EDS : rb-20026688
Percentile statistics : 20151230.v01 (using entries in the PDB archive December 30th 2015)
Refmac : 5.8.0135
CCP4 : 6.5.0
Ideal geometry (proteins) : Engh & Huber (2001)
Ideal geometry (DNA, RNA) : Parkinson et al. (1996)
Validation Pipeline (wwPDB-VP) : trunk26865

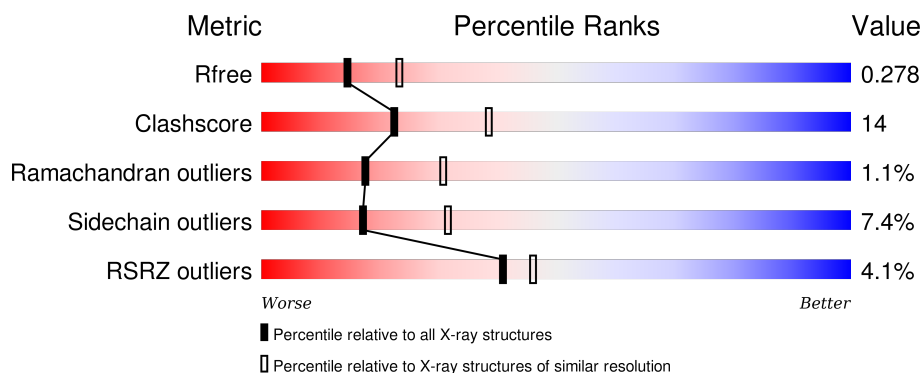
1 Overall quality at a glance

The following experimental techniques were used to determine the structure:

X-RAY DIFFRACTION

The reported resolution of this entry is 2.50 Å.

Percentile scores (ranging between 0-100) for global validation metrics of the entry are shown in the following graphic. The table shows the number of entries on which the scores are based.



Metric	Whole archive (#Entries)	Similar resolution (#Entries, resolution range(Å))
R_{free}	91344	3553 (2.50-2.50)
Clashscore	102246	4242 (2.50-2.50)
Ramachandran outliers	100387	4156 (2.50-2.50)
Sidechain outliers	100360	4158 (2.50-2.50)
RSRZ outliers	91569	3562 (2.50-2.50)

The table below summarises the geometric issues observed across the polymeric chains and their fit to the electron density. The red, orange, yellow and green segments on the lower bar indicate the fraction of residues that contain outliers for ≥ 3 , 2, 1 and 0 types of geometric quality criteria. A grey segment represents the fraction of residues that are not modelled. The numeric value for each fraction is indicated below the corresponding segment, with a dot representing fractions $\leq 5\%$. The upper red bar (where present) indicates the fraction of residues that have poor fit to the electron density. The numeric value is given above the bar.

Mol	Chain	Length	Quality of chain
1	A	291	<div> <div>4%</div> <div>66% 20% • 10%</div> </div>
1	B	291	<div> <div>3%</div> <div>65% 25% • 7%</div> </div>
2	P	16	<div> <div>6%</div> <div>31% 50% 13% 6%</div> </div>
2	Q	16	<div> <div>6%</div> <div>44% 50% 6%</div> </div>

The following table lists non-polymeric compounds, carbohydrate monomers and non-standard

residues in protein, DNA, RNA chains that are outliers for geometric or electron-density-fit criteria:

Mol	Type	Chain	Res	Chirality	Geometry	Clashes	Electron density
3	ET1	A	1	-	-	-	X
3	ET1	B	2	-	-	X	X

2 Entry composition

There are 4 unique types of molecules in this entry. The entry contains 4646 atoms, of which 0 are hydrogens and 0 are deuteriums.

In the tables below, the ZeroOcc column contains the number of atoms modelled with zero occupancy, the AltConf column contains the number of residues with at least one atom in alternate conformation and the Trace column contains the number of residues modelled with at most 2 atoms.

- Molecule 1 is a protein called Peroxisome proliferator-activated receptor alpha.

Mol	Chain	Residues	Atoms					ZeroOcc	AltConf	Trace
1	A	263	Total	C	N	O	S	0	0	0
			2090	1339	349	384	18			
1	B	270	Total	C	N	O	S	0	0	0
			2139	1371	358	392	18			

There are 42 discrepancies between the modelled and reference sequences:

Chain	Residue	Modelled	Actual	Comment	Reference
A	178	MET	-	EXPRESSION TAG	UNP Q07869
A	179	GLY	-	EXPRESSION TAG	UNP Q07869
A	180	SER	-	EXPRESSION TAG	UNP Q07869
A	181	SER	-	EXPRESSION TAG	UNP Q07869
A	182	HIS	-	EXPRESSION TAG	UNP Q07869
A	183	HIS	-	EXPRESSION TAG	UNP Q07869
A	184	HIS	-	EXPRESSION TAG	UNP Q07869
A	185	HIS	-	EXPRESSION TAG	UNP Q07869
A	186	HIS	-	EXPRESSION TAG	UNP Q07869
A	187	HIS	-	EXPRESSION TAG	UNP Q07869
A	188	SER	-	EXPRESSION TAG	UNP Q07869
A	189	SER	-	EXPRESSION TAG	UNP Q07869
A	190	GLY	-	EXPRESSION TAG	UNP Q07869
A	191	LEU	-	EXPRESSION TAG	UNP Q07869
A	192	VAL	-	EXPRESSION TAG	UNP Q07869
A	193	PRO	-	EXPRESSION TAG	UNP Q07869
A	194	ARG	-	EXPRESSION TAG	UNP Q07869
A	195	GLY	-	EXPRESSION TAG	UNP Q07869
A	196	SER	-	EXPRESSION TAG	UNP Q07869
A	197	HIS	-	EXPRESSION TAG	UNP Q07869
A	198	MET	-	EXPRESSION TAG	UNP Q07869
B	178	MET	-	EXPRESSION TAG	UNP Q07869
B	179	GLY	-	EXPRESSION TAG	UNP Q07869
B	180	SER	-	EXPRESSION TAG	UNP Q07869
B	181	SER	-	EXPRESSION TAG	UNP Q07869

Continued on next page...

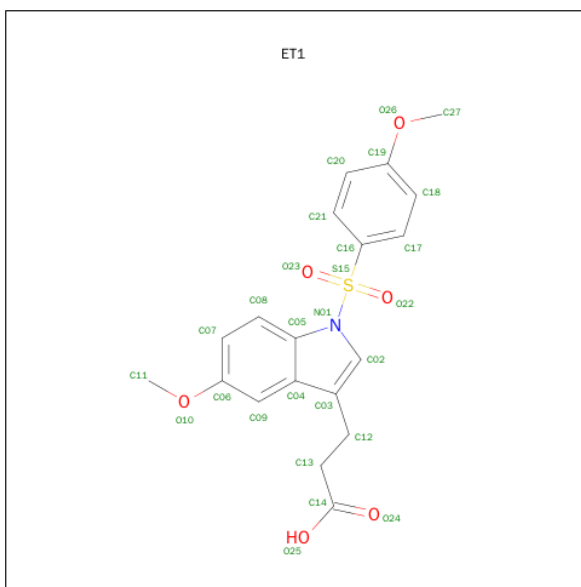
Continued from previous page...

Chain	Residue	Modelled	Actual	Comment	Reference
B	182	HIS	-	EXPRESSION TAG	UNP Q07869
B	183	HIS	-	EXPRESSION TAG	UNP Q07869
B	184	HIS	-	EXPRESSION TAG	UNP Q07869
B	185	HIS	-	EXPRESSION TAG	UNP Q07869
B	186	HIS	-	EXPRESSION TAG	UNP Q07869
B	187	HIS	-	EXPRESSION TAG	UNP Q07869
B	188	SER	-	EXPRESSION TAG	UNP Q07869
B	189	SER	-	EXPRESSION TAG	UNP Q07869
B	190	GLY	-	EXPRESSION TAG	UNP Q07869
B	191	LEU	-	EXPRESSION TAG	UNP Q07869
B	192	VAL	-	EXPRESSION TAG	UNP Q07869
B	193	PRO	-	EXPRESSION TAG	UNP Q07869
B	194	ARG	-	EXPRESSION TAG	UNP Q07869
B	195	GLY	-	EXPRESSION TAG	UNP Q07869
B	196	SER	-	EXPRESSION TAG	UNP Q07869
B	197	HIS	-	EXPRESSION TAG	UNP Q07869
B	198	MET	-	EXPRESSION TAG	UNP Q07869

- Molecule 2 is a protein called Steroid receptor coactivator 1.

Mol	Chain	Residues	Atoms				ZeroOcc	AltConf	Trace
2	P	15	Total	C	N	O	0	0	0
			132	82	27	23			
2	Q	16	Total	C	N	O	0	0	0
			138	85	28	25			

- Molecule 3 is 3-{5-METHOXY-1-[(4-METHOXYPHENYL)SULFONYL]-1H-INDOL-3-YL}PROPANOIC ACID (three-letter code: ET1) (formula: C₁₉H₁₉NO₆S).



Mol	Chain	Residues	Atoms					ZeroOcc	AltConf
3	A	1	Total	C	N	O	S	0	0
			27	19	1	6	1		
3	B	1	Total	C	N	O	S	0	0
			27	19	1	6	1		

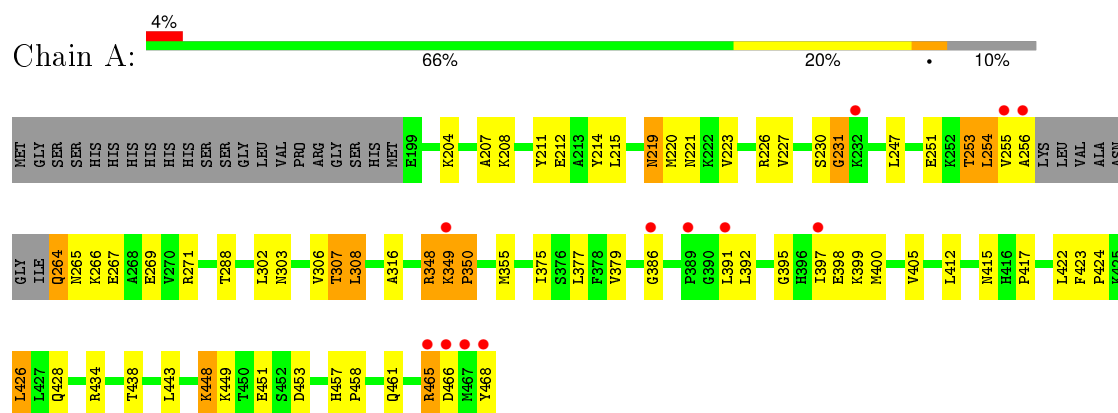
- Molecule 4 is water.

Mol	Chain	Residues	Atoms		ZeroOcc	AltConf
4	A	38	Total	O	0	0
			38	38		
4	B	49	Total	O	0	0
			49	49		
4	P	1	Total	O	0	0
			1	1		
4	Q	5	Total	O	0	0
			5	5		

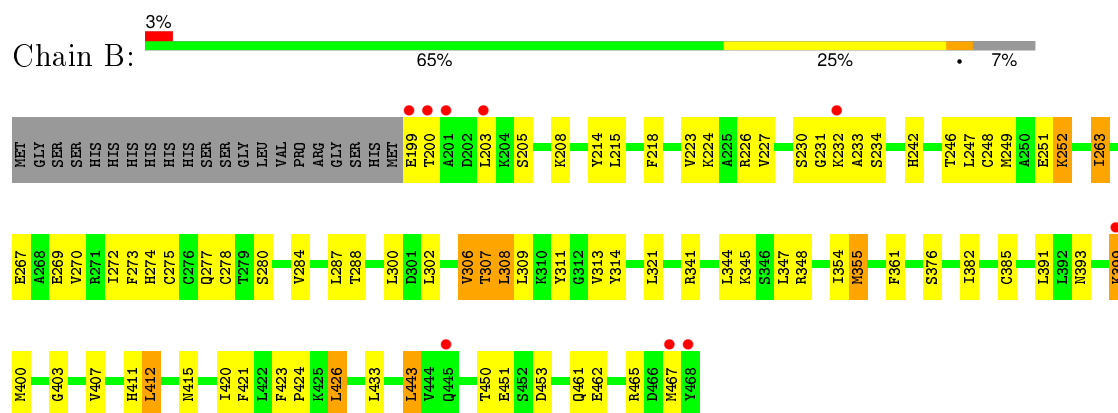
3 Residue-property plots [i](#)

These plots are drawn for all protein, RNA and DNA chains in the entry. The first graphic for a chain summarises the proportions of errors displayed in the second graphic. The second graphic shows the sequence view annotated by issues in geometry and electron density. Residues are color-coded according to the number of geometric quality criteria for which they contain at least one outlier: green = 0, yellow = 1, orange = 2 and red = 3 or more. A red dot above a residue indicates a poor fit to the electron density ($RSRZ > 2$). Stretches of 2 or more consecutive residues without any outlier are shown as a green connector. Residues present in the sample, but not in the model, are shown in grey.

- Molecule 1: Peroxisome proliferator-activated receptor alpha



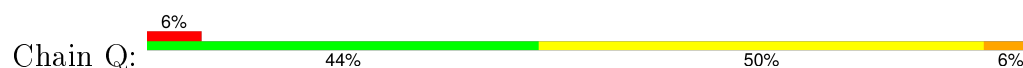
- Molecule 1: Peroxisome proliferator-activated receptor alpha



- Molecule 2: Steroid receptor coactivator 1



- Molecule 2: Steroid receptor coactivator 1



S681	I689
S682	L690
L683	H691
T684	R692
E685	L693
	L694
	Q695
	E696

4 Data and refinement statistics

Property	Value	Source
Space group	P 21 21 21	Depositor
Cell constants a, b, c, α , β , γ	83.87Å 89.59Å 101.11Å 90.00° 90.00° 90.00°	Depositor
Resolution (Å)	44.80 – 2.50 44.80 – 2.50	Depositor EDS
% Data completeness (in resolution range)	99.7 (44.80-2.50) 99.8 (44.80-2.50)	Depositor EDS
R_{merge}	(Not available)	Depositor
R_{sym}	0.04	Depositor
$\langle I/\sigma(I) \rangle$ ¹	2.83 (at 2.51Å)	Xtriage
Refinement program	PHENIX	Depositor
R, R_{free}	0.195 , 0.258 0.210 , 0.278	Depositor DCC
R_{free} test set	1354 reflections (5.29%)	DCC
Wilson B-factor (Å ²)	61.4	Xtriage
Anisotropy	0.421	Xtriage
Bulk solvent k_{sol} (e/Å ³), B_{sol} (Å ²)	0.31 , 57.6	EDS
Estimated twinning fraction	No twinning to report.	Xtriage
L-test for twinning ²	$\langle L \rangle = 0.50$, $\langle L^2 \rangle = 0.33$	Xtriage
Outliers	0 of 26942 reflections	Xtriage
F_o, F_c correlation	0.95	EDS
Total number of atoms	4646	wwPDB-VP
Average B, all atoms (Å ²)	75.0	wwPDB-VP

Xtriage's analysis on translational NCS is as follows: *The largest off-origin peak in the Patterson function is 6.24% of the height of the origin peak. No significant pseudotranslation is detected.*

¹Intensities estimated from amplitudes.

²Theoretical values of $\langle |L| \rangle$, $\langle L^2 \rangle$ for acentric reflections are 0.5, 0.375 respectively for untwinned datasets, and 0.333, 0.2 for perfectly twinned datasets.

5 Model quality [i](#)

5.1 Standard geometry [i](#)

Bond lengths and bond angles in the following residue types are not validated in this section: ET1

The Z score for a bond length (or angle) is the number of standard deviations the observed value is removed from the expected value. A bond length (or angle) with $|Z| > 5$ is considered an outlier worth inspection. RMSZ is the root-mean-square of all Z scores of the bond lengths (or angles).

Mol	Chain	Bond lengths		Bond angles	
		RMSZ	$\# Z > 5$	RMSZ	$\# Z > 5$
1	A	0.34	0/2127	0.50	0/2866
1	B	0.38	0/2177	0.51	0/2935
2	P	0.22	0/133	0.42	0/175
2	Q	0.31	0/139	0.53	0/183
All	All	0.35	0/4576	0.50	0/6159

There are no bond length outliers.

There are no bond angle outliers.

There are no chirality outliers.

There are no planarity outliers.

5.2 Too-close contacts [i](#)

In the following table, the Non-H and H(model) columns list the number of non-hydrogen atoms and hydrogen atoms in the chain respectively. The H(added) column lists the number of hydrogen atoms added and optimized by MolProbity. The Clashes column lists the number of clashes within the asymmetric unit, whereas Symm-Clashes lists symmetry related clashes.

Mol	Chain	Non-H	H(model)	H(added)	Clashes	Symm-Clashes
1	A	2090	0	2120	53	0
1	B	2139	0	2179	59	0
2	P	132	0	139	8	0
2	Q	138	0	144	7	0
3	A	27	0	18	5	0
3	B	27	0	18	9	0
4	A	38	0	0	1	0
4	B	49	0	0	2	0
4	P	1	0	0	0	0

Continued on next page...

Continued from previous page...

Mol	Chain	Non-H	H(model)	H(added)	Clashes	Symm-Clashes
4	Q	5	0	0	0	0
All	All	4646	0	4618	126	0

The all-atom clashscore is defined as the number of clashes found per 1000 atoms (including hydrogen atoms). The all-atom clashscore for this structure is 14.

All (126) close contacts within the same asymmetric unit are listed below, sorted by their clash magnitude.

Atom-1	Atom-2	Interatomic distance (Å)	Clash overlap (Å)
1:A:264:GLN:HE21	1:A:264:GLN:HA	1.28	0.99
1:A:349:LYS:HB2	1:A:350:PRO:HD3	1.46	0.95
1:A:264:GLN:HG3	1:A:265:ASN:H	1.31	0.94
1:B:307:THR:HG23	2:Q:683:LEU:HD21	1.55	0.89
1:B:263:ILE:HD13	1:B:274:HIS:HB3	1.57	0.85
1:B:199:GLU:HG2	1:B:200:THR:H	1.41	0.84
1:B:355:MET:HE2	3:B:2:ET1:H21	1.65	0.78
1:A:254:LEU:HD22	1:A:255:VAL:HG23	1.66	0.76
1:A:349:LYS:CB	1:A:350:PRO:HD3	2.16	0.76
1:B:300:LEU:HD11	1:B:400:MET:HE1	1.69	0.75
2:Q:682:SER:HB3	2:Q:685:GLU:HG2	1.69	0.73
1:B:270:VAL:HG11	1:B:453:ASP:HB3	1.70	0.73
1:B:249:MET:O	1:B:252:LYS:HB2	1.91	0.70
2:P:682:SER:O	2:P:686:ARG:HG3	1.90	0.70
1:A:355:MET:HE1	3:A:1:ET1:H21	1.74	0.69
1:A:219:ASN:N	1:A:219:ASN:HD22	1.92	0.67
3:B:2:ET1:H02	3:B:2:ET1:C14	2.26	0.66
2:Q:682:SER:HB3	2:Q:685:GLU:CG	2.26	0.66
1:A:303:ASN:O	1:A:307:THR:HG23	1.95	0.65
1:A:266:LYS:HD2	1:A:453:ASP:HB3	1.77	0.65
3:A:1:ET1:C14	3:A:1:ET1:H02	2.28	0.64
1:A:208:LYS:O	1:A:212:GLU:HG2	1.98	0.64
1:B:288:THR:HG21	2:Q:693:LEU:HB3	1.80	0.63
1:B:344:LEU:HD13	1:B:355:MET:HG3	1.80	0.62
1:A:288:THR:HG21	2:P:693:LEU:HB3	1.81	0.62
1:A:264:GLN:HG3	1:A:265:ASN:N	2.09	0.62
1:A:434:ARG:O	1:A:438:THR:HG23	2.00	0.61
1:B:300:LEU:HD11	1:B:400:MET:CE	2.31	0.61
1:B:355:MET:HE2	3:B:2:ET1:C21	2.32	0.60
1:B:423:PHE:HB3	1:B:424:PRO:HD3	1.82	0.60
2:P:688:LYS:O	2:P:692:ARG:HG2	2.02	0.59
1:A:254:LEU:HD22	1:A:255:VAL:H	1.66	0.59

Continued on next page...

Continued from previous page...

Atom-1	Atom-2	Interatomic distance (Å)	Clash overlap (Å)
1:A:355:MET:CE	3:A:1:ET1:H21	2.33	0.58
1:A:264:GLN:CG	1:A:265:ASN:H	2.10	0.58
1:B:233:ALA:O	1:B:234:SER:HB3	2.05	0.57
1:B:450:THR:O	1:B:450:THR:HG22	2.05	0.57
1:A:302:LEU:O	1:A:306:VAL:HG13	2.03	0.57
1:A:264:GLN:NE2	1:A:264:GLN:HA	2.09	0.57
1:A:254:LEU:HD22	1:A:255:VAL:N	2.20	0.57
1:A:448:LYS:NZ	1:A:449:LYS:HE2	2.20	0.56
1:B:275:CYS:O	1:B:278:CYS:HB2	2.05	0.55
1:B:269:GLU:HG3	1:B:347:LEU:HD22	1.89	0.55
1:B:199:GLU:HG2	1:B:200:THR:N	2.17	0.55
1:A:448:LYS:HZ1	1:A:449:LYS:HE2	1.72	0.54
1:B:223:VAL:O	1:B:227:VAL:HG13	2.08	0.54
1:A:267:GLU:O	1:A:271:ARG:HG3	2.08	0.54
1:B:272:ILE:HG22	3:B:2:ET1:H11A	1.89	0.54
3:B:2:ET1:H02	3:B:2:ET1:O25	2.07	0.54
1:A:307:THR:HG22	2:P:683:LEU:CD1	2.38	0.53
1:B:461:GLN:O	1:B:465:ARG:HB2	2.09	0.53
1:A:219:ASN:ND2	1:A:220:MET:H	2.07	0.53
1:A:308:LEU:HD13	1:A:391:LEU:HD21	1.92	0.52
1:B:263:ILE:HD13	1:B:274:HIS:CB	2.34	0.52
1:B:247:LEU:O	1:B:251:GLU:HG3	2.10	0.52
1:A:395:GLY:O	1:A:399:LYS:HG2	2.10	0.51
1:A:355:MET:HE1	3:A:1:ET1:H08	1.92	0.51
1:A:349:LYS:CB	1:A:350:PRO:CD	2.88	0.51
1:B:267:GLU:OE2	1:B:348:ARG:HD3	2.11	0.51
1:B:308:LEU:HD13	1:B:391:LEU:HD21	1.91	0.51
1:B:273:PHE:CD1	3:B:2:ET1:H09	2.46	0.51
3:B:2:ET1:C02	3:B:2:ET1:C14	2.89	0.50
1:A:211:TYR:O	1:A:214:TYR:HB3	2.12	0.49
1:B:199:GLU:O	1:B:203:LEU:HG	2.12	0.49
1:A:461:GLN:O	1:A:465:ARG:HB2	2.13	0.49
1:B:302:LEU:O	1:B:306:VAL:HG13	2.11	0.49
1:B:403:GLY:O	1:B:407:VAL:HG22	2.12	0.49
1:B:273:PHE:CE2	1:B:277:GLN:NE2	2.81	0.49
1:B:311:TYR:HA	1:B:467:MET:HE3	1.93	0.49
1:B:269:GLU:HG2	1:B:348:ARG:HB2	1.95	0.48
1:A:316:ALA:HB1	1:A:379:VAL:HG13	1.95	0.48
1:A:204:LYS:HG3	4:A:56:HOH:O	2.12	0.48
1:A:465:ARG:NH1	2:P:686:ARG:HE	2.12	0.48
1:A:438:THR:HG22	1:A:468:TYR:CE1	2.50	0.47

Continued on next page...

Continued from previous page...

Atom-1	Atom-2	Interatomic distance (Å)	Clash overlap (Å)
1:B:421:PHE:C	1:B:424:PRO:HD2	2.35	0.47
1:B:252:LYS:N	1:B:252:LYS:HE2	2.30	0.47
3:A:1:ET1:C14	3:A:1:ET1:C02	2.93	0.47
2:P:690:LEU:HD22	2:P:694:LEU:CD2	2.45	0.47
1:B:248:CYS:O	1:B:252:LYS:HD2	2.15	0.46
1:B:242:HIS:CE1	1:B:246:THR:HG21	2.50	0.46
1:A:386:GLY:HA3	1:A:398:GLU:HG2	1.98	0.46
1:B:355:MET:CE	3:B:2:ET1:C21	2.94	0.46
1:A:230:SER:O	1:A:231:GLY:C	2.54	0.46
2:Q:684:THR:HG23	2:Q:691:HIS:CD2	2.50	0.46
1:B:223:VAL:HG13	1:B:224:LYS:N	2.31	0.46
1:B:467:MET:HE1	4:B:514:HOH:O	2.16	0.46
1:B:426:LEU:HA	1:B:426:LEU:HD12	1.77	0.46
1:A:465:ARG:O	1:A:466:ASP:HB2	2.16	0.45
1:B:214:TYR:CG	1:B:376:SER:HB3	2.51	0.45
1:A:405:VAL:HG13	1:A:423:PHE:CZ	2.51	0.45
1:B:354:ILE:HG12	1:B:443:LEU:CD1	2.47	0.45
1:B:248:CYS:HA	1:B:251:GLU:HG3	1.97	0.45
1:B:341:ARG:O	1:B:345:LYS:HG2	2.16	0.45
1:A:349:LYS:HB2	1:A:350:PRO:CD	2.33	0.45
1:B:412:LEU:HD21	1:B:426:LEU:HD23	1.98	0.44
1:B:411:HIS:O	1:B:415:ASN:HB2	2.16	0.44
1:A:223:VAL:O	1:A:227:VAL:HG13	2.17	0.44
1:B:263:ILE:CD1	1:B:274:HIS:HB3	2.39	0.44
1:B:348:ARG:HB3	1:B:348:ARG:HE	1.67	0.44
1:B:205:SER:O	1:B:208:LYS:HB3	2.18	0.43
1:A:348:ARG:NH2	1:A:451:GLU:OE2	2.51	0.43
1:B:462:GLU:OE1	2:Q:689:ILE:HG13	2.18	0.43
1:B:280:SER:O	1:B:284:VAL:HG23	2.19	0.43
1:B:218:PHE:HZ	1:B:287:LEU:HD23	1.84	0.43
1:B:314:TYR:HB2	4:B:514:HOH:O	2.18	0.43
2:P:682:SER:HB3	2:P:685:GLU:CD	2.40	0.42
1:B:308:LEU:HD12	1:B:308:LEU:HA	1.91	0.42
1:A:221:ASN:OD1	1:A:223:VAL:HG12	2.19	0.42
1:A:422:LEU:O	1:A:426:LEU:HD22	2.19	0.42
1:B:272:ILE:CG2	3:B:2:ET1:H11A	2.49	0.42
1:B:309:LEU:O	1:B:313:VAL:HG22	2.19	0.42
2:P:689:ILE:O	2:P:693:LEU:HD13	2.19	0.42
1:A:253:THR:O	1:A:256:ALA:HB3	2.19	0.42
1:A:308:LEU:HA	1:A:308:LEU:HD12	1.74	0.42
1:B:361:PHE:CZ	1:B:433:LEU:HD21	2.55	0.42

Continued on next page...

Continued from previous page...

Atom-1	Atom-2	Interatomic distance (Å)	Clash overlap (Å)
1:A:375:ILE:O	1:A:379:VAL:HG23	2.19	0.41
1:A:247:LEU:HG	1:A:251:GLU:OE2	2.20	0.41
1:A:423:PHE:HB3	1:A:424:PRO:HD3	2.01	0.41
1:B:399:LYS:HE3	1:B:399:LYS:HA	2.03	0.41
1:A:219:ASN:HD22	1:A:219:ASN:H	1.66	0.41
1:B:382:ILE:HD13	1:B:382:ILE:HA	1.84	0.41
2:Q:693:LEU:HA	2:Q:693:LEU:HD12	1.86	0.41
1:A:457:HIS:HA	1:A:458:PRO:HD3	1.92	0.41
1:A:415:ASN:C	1:A:417:PRO:HD3	2.41	0.41
1:A:397:ILE:O	1:A:400:MET:HB2	2.21	0.41
1:B:230:SER:OG	1:B:231:GLY:N	2.55	0.40
1:A:207:ALA:HA	1:A:377:LEU:HD21	2.03	0.40

There are no symmetry-related clashes.

5.3 Torsion angles [i](#)

5.3.1 Protein backbone [i](#)

In the following table, the Percentiles column shows the percent Ramachandran outliers of the chain as a percentile score with respect to all X-ray entries followed by that with respect to entries of similar resolution.

The Analysed column shows the number of residues for which the backbone conformation was analysed, and the total number of residues.

Mol	Chain	Analysed	Favoured	Allowed	Outliers	Percentiles	
1	A	259/291 (89%)	245 (95%)	10 (4%)	4 (2%)	13	22
1	B	268/291 (92%)	254 (95%)	13 (5%)	1 (0%)	39	61
2	P	13/16 (81%)	10 (77%)	2 (15%)	1 (8%)	1	1
2	Q	14/16 (88%)	13 (93%)	1 (7%)	0	100	100
All	All	554/614 (90%)	522 (94%)	26 (5%)	6 (1%)	17	31

All (6) Ramachandran outliers are listed below:

Mol	Chain	Res	Type
1	A	349	LYS
1	A	465	ARG
1	A	350	PRO

Continued on next page...

Continued from previous page...

Mol	Chain	Res	Type
2	P	688	LYS
1	A	231	GLY
1	B	263	ILE

5.3.2 Protein sidechains ⓘ

In the following table, the Percentiles column shows the percent sidechain outliers of the chain as a percentile score with respect to all X-ray entries followed by that with respect to entries of similar resolution.

The Analysed column shows the number of residues for which the sidechain conformation was analysed, and the total number of residues.

Mol	Chain	Analysed	Rotameric	Outliers	Percentiles	
1	A	231/254 (91%)	215 (93%)	16 (7%)	19	35
1	B	236/254 (93%)	219 (93%)	17 (7%)	18	33
2	P	15/16 (94%)	14 (93%)	1 (7%)	20	37
2	Q	16/16 (100%)	13 (81%)	3 (19%)	2	3
All	All	498/540 (92%)	461 (93%)	37 (7%)	17	31

All (37) residues with a non-rotameric sidechain are listed below:

Mol	Chain	Res	Type
1	A	215	LEU
1	A	219	ASN
1	A	226	ARG
1	A	253	THR
1	A	254	LEU
1	A	264	GLN
1	A	269	GLU
1	A	307	THR
1	A	308	LEU
1	A	348	ARG
1	A	392	LEU
1	A	412	LEU
1	A	426	LEU
1	A	428	GLN
1	A	443	LEU
1	A	448	LYS
1	B	215	LEU
1	B	226	ARG

Continued on next page...

Continued from previous page...

Mol	Chain	Res	Type
1	B	232	LYS
1	B	252	LYS
1	B	306	VAL
1	B	307	THR
1	B	308	LEU
1	B	321	LEU
1	B	355	MET
1	B	385	CYS
1	B	393	ASN
1	B	399	LYS
1	B	412	LEU
1	B	420	ILE
1	B	426	LEU
1	B	443	LEU
1	B	451	GLU
2	P	690	LEU
2	Q	690	LEU
2	Q	693	LEU
2	Q	694	LEU

Some sidechains can be flipped to improve hydrogen bonding and reduce clashes. All (9) such sidechains are listed below:

Mol	Chain	Res	Type
1	A	219	ASN
1	A	264	GLN
1	A	299	ASN
1	A	413	GLN
1	A	428	GLN
1	B	242	HIS
1	B	393	ASN
1	B	442	GLN
1	B	445	GLN

5.3.3 RNA ⓘ

There are no RNA molecules in this entry.

5.4 Non-standard residues in protein, DNA, RNA chains ⓘ

There are no non-standard protein/DNA/RNA residues in this entry.

5.5 Carbohydrates

There are no carbohydrates in this entry.

5.6 Ligand geometry

2 ligands are modelled in this entry.

In the following table, the Counts columns list the number of bonds (or angles) for which Mogul statistics could be retrieved, the number of bonds (or angles) that are observed in the model and the number of bonds (or angles) that are defined in the chemical component dictionary. The Link column lists molecule types, if any, to which the group is linked. The Z score for a bond length (or angle) is the number of standard deviations the observed value is removed from the expected value. A bond length (or angle) with $|Z| > 2$ is considered an outlier worth inspection. RMSZ is the root-mean-square of all Z scores of the bond lengths (or angles).

Mol	Type	Chain	Res	Link	Bond lengths			Bond angles		
					Counts	RMSZ	$\# Z > 2$	Counts	RMSZ	$\# Z > 2$
3	ET1	A	1	-	20,29,29	1.28	2 (10%)	29,42,42	2.20	7 (24%)
3	ET1	B	2	-	20,29,29	1.28	2 (10%)	29,42,42	2.21	7 (24%)

In the following table, the Chirals column lists the number of chiral outliers, the number of chiral centers analysed, the number of these observed in the model and the number defined in the chemical component dictionary. Similar counts are reported in the Torsion and Rings columns. '-' means no outliers of that kind were identified.

Mol	Type	Chain	Res	Link	Chirals	Torsions	Rings
3	ET1	A	1	-	-	0/13/21/21	0/3/3/3
3	ET1	B	2	-	-	0/13/21/21	0/3/3/3

All (4) bond length outliers are listed below:

Mol	Chain	Res	Type	Atoms	Z	Observed(Å)	Ideal(Å)
3	A	1	ET1	C17-C16	2.04	1.42	1.38
3	B	2	ET1	C17-C16	2.09	1.42	1.38
3	A	1	ET1	C02-N01	2.60	1.44	1.39
3	B	2	ET1	C02-N01	2.82	1.44	1.39

All (14) bond angle outliers are listed below:

Mol	Chain	Res	Type	Atoms	Z	Observed(°)	Ideal(°)
3	B	2	ET1	C21-C16-C17	-5.64	112.89	120.42
3	A	1	ET1	C21-C16-C17	-5.62	112.92	120.42
3	A	1	ET1	C08-C05-C04	-2.91	116.93	120.93

Continued on next page...

Continued from previous page...

Mol	Chain	Res	Type	Atoms	Z	Observed(°)	Ideal(°)
3	A	1	ET1	O10-C06-C09	-2.63	118.00	124.62
3	B	2	ET1	C08-C05-C04	-2.62	117.32	120.93
3	B	2	ET1	O10-C06-C09	-2.47	118.41	124.62
3	B	2	ET1	C17-C16-S15	2.63	122.88	119.89
3	A	1	ET1	C17-C16-S15	2.67	122.92	119.89
3	B	2	ET1	C18-C17-C16	2.96	122.75	119.48
3	A	1	ET1	C18-C17-C16	3.44	123.28	119.48
3	A	1	ET1	C21-C16-S15	3.74	124.14	119.89
3	B	2	ET1	C21-C16-S15	3.76	124.16	119.89
3	A	1	ET1	C20-C21-C16	5.72	125.81	119.48
3	B	2	ET1	C20-C21-C16	6.22	126.35	119.48

There are no chirality outliers.

There are no torsion outliers.

There are no ring outliers.

2 monomers are involved in 14 short contacts:

Mol	Chain	Res	Type	Clashes	Symm-Clashes
3	A	1	ET1	5	0
3	B	2	ET1	9	0

5.7 Other polymers [i](#)

There are no such residues in this entry.

5.8 Polymer linkage issues [i](#)

There are no chain breaks in this entry.

6 Fit of model and data

6.1 Protein, DNA and RNA chains

In the following table, the column labelled ‘#RSRZ> 2’ contains the number (and percentage) of RSRZ outliers, followed by percent RSRZ outliers for the chain as percentile scores relative to all X-ray entries and entries of similar resolution. The OWAB column contains the minimum, median, 95th percentile and maximum values of the occupancy-weighted average B-factor per residue. The column labelled ‘Q< 0.9’ lists the number of (and percentage) of residues with an average occupancy less than 0.9.

Mol	Chain	Analysed	<RSRZ>	#RSRZ>2	OWAB(Å ²)	Q<0.9
1	A	263/291 (90%)	0.26	12 (4%) 36 41	44, 72, 117, 155	0
1	B	270/291 (92%)	0.24	9 (3%) 50 55	42, 66, 115, 169	0
2	P	15/16 (93%)	0.43	1 (6%) 21 23	88, 111, 129, 134	0
2	Q	16/16 (100%)	0.25	1 (6%) 23 26	54, 80, 121, 145	0
All	All	564/614 (91%)	0.26	23 (4%) 41 46	42, 70, 119, 169	0

All (23) RSRZ outliers are listed below:

Mol	Chain	Res	Type	RSRZ
1	A	256	ALA	6.3
1	B	468	TYR	5.8
1	A	255	VAL	5.0
1	B	199	GLU	4.9
1	B	201	ALA	4.5
1	A	468	TYR	4.4
1	A	467	MET	4.1
1	A	349	LYS	3.9
1	A	232	LYS	3.8
1	B	203	LEU	3.8
1	A	391	LEU	3.5
1	A	397	ILE	3.1
1	A	386	GLY	3.0
1	A	389	PRO	3.0
1	A	466	ASP	3.0
1	B	467	MET	2.9
1	B	232	LYS	2.9
2	P	683	LEU	2.7
2	Q	681	SER	2.7
1	A	465	ARG	2.6
1	B	399	LYS	2.2

Continued on next page...

Continued from previous page...

Mol	Chain	Res	Type	RSRZ
1	B	445	GLN	2.0
1	B	200	THR	2.0

6.2 Non-standard residues in protein, DNA, RNA chains [i](#)

There are no non-standard protein/DNA/RNA residues in this entry.

6.3 Carbohydrates [i](#)

There are no carbohydrates in this entry.

6.4 Ligands [i](#)

In the following table, the Atoms column lists the number of modelled atoms in the group and the number defined in the chemical component dictionary. LLDF column lists the quality of electron density of the group with respect to its neighbouring residues in protein, DNA or RNA chains. The B-factors column lists the minimum, median, 95th percentile and maximum values of B factors of atoms in the group. The column labelled 'Q< 0.9' lists the number of atoms with occupancy less than 0.9.

Mol	Type	Chain	Res	Atoms	RSCC	RSR	LLDF	B-factors(Å ²)	Q<0.9
3	ET1	A	1	27/27	0.85	0.30	4.54	77,89,249,251	0
3	ET1	B	2	27/27	0.86	0.26	3.93	64,78,264,266	0

6.5 Other polymers [i](#)

There are no such residues in this entry.