



Full wwPDB X-ray Structure Validation Report ⓘ

Feb 1, 2016 – 04:28 PM GMT

PDB ID : 4EYI
Title : Human DNA polymerase iota incorporating dATP opposite N-(deoxyguanosine-8-yl)-1-aminopyrene lesion
Authors : Kirouac, K.; Ling, H.
Deposited on : 2012-05-01
Resolution : 2.90 Å(reported)

This is a Full wwPDB X-ray Structure Validation Report for a publicly released PDB entry.
We welcome your comments at validation@mail.wwpdb.org
A user guide is available at
<http://wwpdb.org/validation/2016/XrayValidationReportHelp>
with specific help available everywhere you see the ⓘ symbol.

The following versions of software and data (see [references ⓘ](#)) were used in the production of this report:

MolProbity : 4.02b-467
Mogul : 1.7 (RC4), CSD as536be (2015)
Xtriage (Phenix) : 1.9-1692
EDS : rb-20026688
Percentile statistics : 20151230.v01 (using entries in the PDB archive December 30th 2015)
Refmac : 5.8.0135
CCP4 : 6.5.0
Ideal geometry (proteins) : Engh & Huber (2001)
Ideal geometry (DNA, RNA) : Parkinson et al. (1996)
Validation Pipeline (wwPDB-VP) : trunk26865

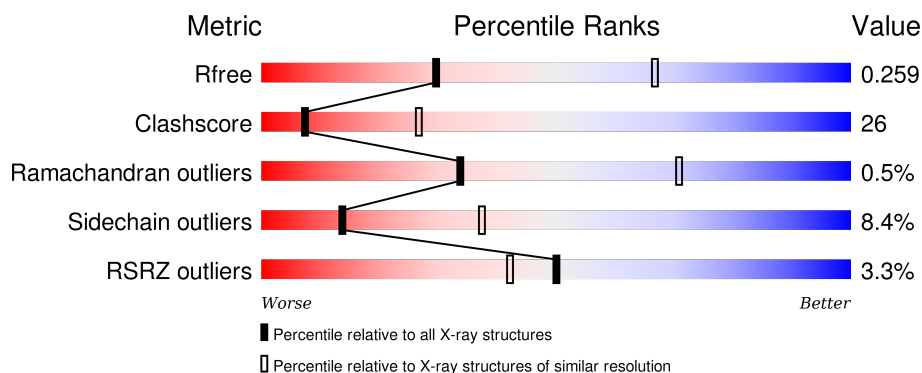
1 Overall quality at a glance

The following experimental techniques were used to determine the structure:

X-RAY DIFFRACTION

The reported resolution of this entry is 2.90 Å.

Percentile scores (ranging between 0-100) for global validation metrics of the entry are shown in the following graphic. The table shows the number of entries on which the scores are based.



Metric	Whole archive (#Entries)	Similar resolution (#Entries, resolution range(Å))
R_{free}	91344	1451 (2.90-2.90)
Clashscore	102246	1668 (2.90-2.90)
Ramachandran outliers	100387	1630 (2.90-2.90)
Sidechain outliers	100360	1632 (2.90-2.90)
RSRZ outliers	91569	1456 (2.90-2.90)

The table below summarises the geometric issues observed across the polymeric chains and their fit to the electron density. The red, orange, yellow and green segments on the lower bar indicate the fraction of residues that contain outliers for ≥ 3 , 2, 1 and 0 types of geometric quality criteria. A grey segment represents the fraction of residues that are not modelled. The numeric value for each fraction is indicated below the corresponding segment, with a dot representing fractions $\leq 5\%$. The upper red bar (where present) indicates the fraction of residues that have poor fit to the electron density. The numeric value is given above the bar.

Mol	Chain	Length	Quality of chain
1	B	420	<div> <div>3%</div> <div>55%</div> <div>28%</div> <div>6%</div> <div>10%</div> </div>
2	T	8	<div> <div>75%</div> <div>25%</div> </div>
3	P	7	<div> <div>43%</div> <div>43%</div> <div>14%</div> </div>

2 Entry composition [i](#)

There are 6 unique types of molecules in this entry. The entry contains 3338 atoms, of which 0 are hydrogens and 0 are deuteriums.

In the tables below, the ZeroOcc column contains the number of atoms modelled with zero occupancy, the AltConf column contains the number of residues with at least one atom in alternate conformation and the Trace column contains the number of residues modelled with at most 2 atoms.

- Molecule 1 is a protein called DNA polymerase iota.

Mol	Chain	Residues	Atoms					ZeroOcc	AltConf	Trace
1	B	378	Total	C	N	O	S	0	1	0
			2951	1870	514	546	21			

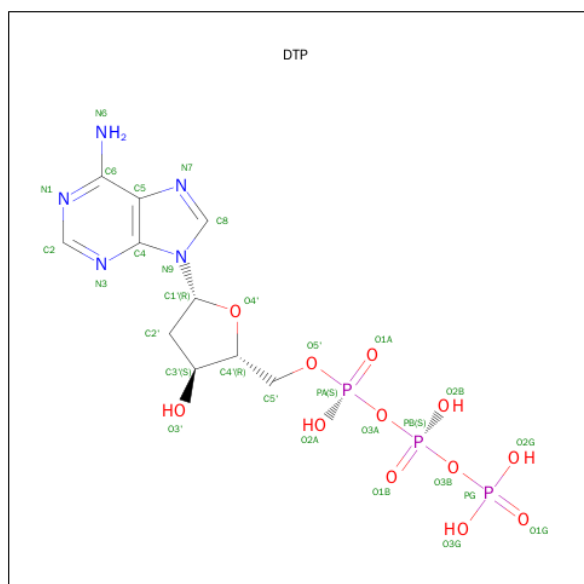
- Molecule 2 is a DNA chain called DNA template.

Mol	Chain	Residues	Atoms					ZeroOcc	AltConf	Trace
2	T	8	Total	C	N	O	P	0	0	0
			183	94	31	50	8			

- Molecule 3 is a DNA chain called DNA primer.

Mol	Chain	Residues	Atoms					ZeroOcc	AltConf	Trace
3	P	7	Total	C	N	O	P	0	0	0
			143	67	29	40	7			

- Molecule 4 is 2'-DEOXYADENOSINE 5'-TRIPHOSPHATE (three-letter code: DTP) (formula: $C_{10}H_{16}N_5O_{12}P_3$).



Mol	Chain	Residues	Atoms					ZeroOcc	AltConf
4	B	1	Total	C	N	O	P	0	0
			30	10	5	12	3		

- Molecule 5 is MAGNESIUM ION (three-letter code: MG) (formula: Mg).

Mol	Chain	Residues	Atoms		ZeroOcc	AltConf
5	B	3	Total	Mg	0	0
			3	3		

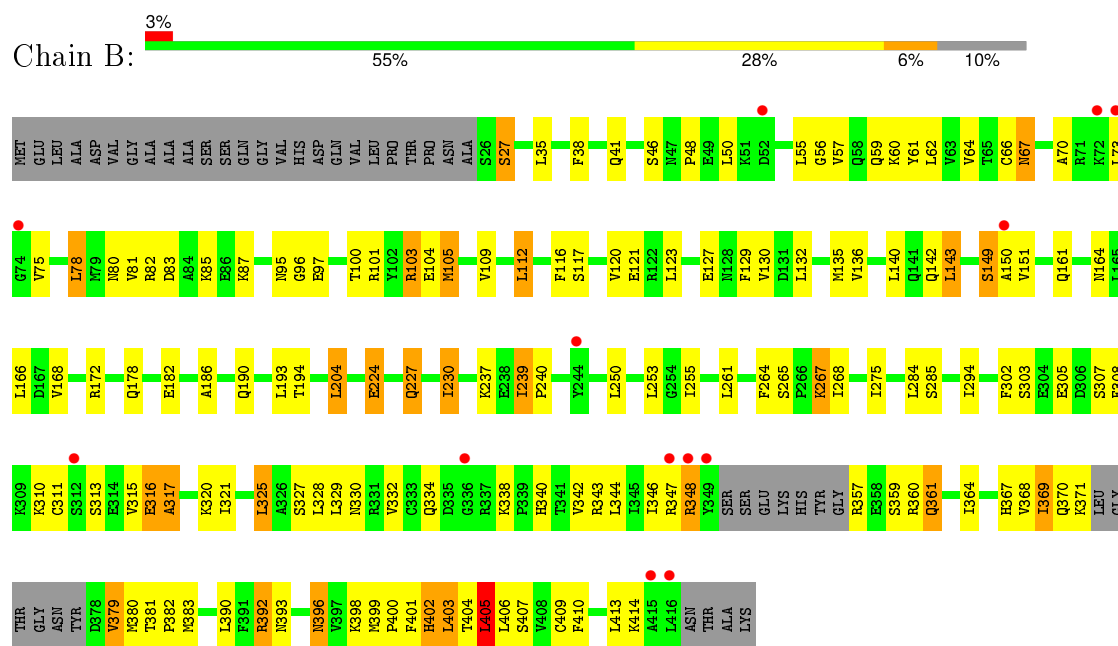
- Molecule 6 is water.

Mol	Chain	Residues	Atoms		ZeroOcc	AltConf
6	B	24	Total	O	0	0
			24	24		
6	P	4	Total	O	0	0
			4	4		

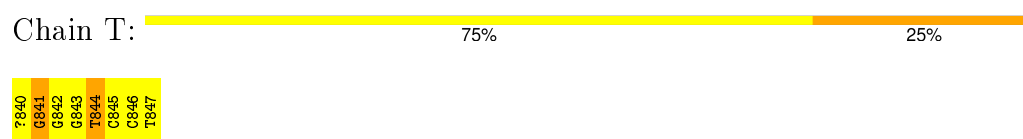
3 Residue-property plots [i](#)

These plots are drawn for all protein, RNA and DNA chains in the entry. The first graphic for a chain summarises the proportions of errors displayed in the second graphic. The second graphic shows the sequence view annotated by issues in geometry and electron density. Residues are color-coded according to the number of geometric quality criteria for which they contain at least one outlier: green = 0, yellow = 1, orange = 2 and red = 3 or more. A red dot above a residue indicates a poor fit to the electron density ($\text{RSRZ} > 2$). Stretches of 2 or more consecutive residues without any outlier are shown as a green connector. Residues present in the sample, but not in the model, are shown in grey.

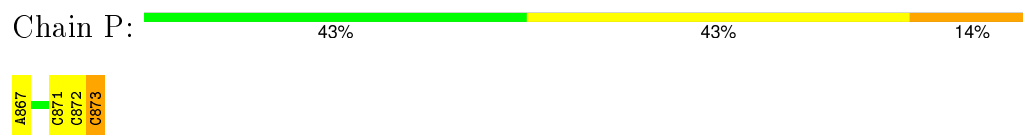
- Molecule 1: DNA polymerase iota



- Molecule 2: DNA template



- Molecule 3: DNA primer



4 Data and refinement statistics

Property	Value	Source
Space group	P 65 2 2	Depositor
Cell constants a, b, c, α , β , γ	98.85Å 98.85Å 194.20Å 90.00° 90.00° 120.00°	Depositor
Resolution (Å)	32.36 – 2.90 32.36 – 2.90	Depositor EDS
% Data completeness (in resolution range)	98.8 (32.36-2.90) 98.9 (32.36-2.90)	Depositor EDS
R_{merge}	(Not available)	Depositor
R_{sym}	(Not available)	Depositor
$\langle I/\sigma(I) \rangle$ ¹	2.64 (at 2.90Å)	Xtriage
Refinement program	PHENIX (phenix.refine: 1.6.4_486)	Depositor
R, R_{free}	0.218 , 0.264 0.216 , 0.259	Depositor DCC
R_{free} test set	1029 reflections (8.65%)	DCC
Wilson B-factor (Å ²)	76.6	Xtriage
Anisotropy	0.092	Xtriage
Bulk solvent k_{sol} (e/Å ³), B_{sol} (Å ²)	0.31 , 54.4	EDS
Estimated twinning fraction	No twinning to report.	Xtriage
L-test for twinning ²	$\langle L \rangle = 0.51$, $\langle L^2 \rangle = 0.34$	Xtriage
Outliers	0 of 12931 reflections	Xtriage
F_o, F_c correlation	0.94	EDS
Total number of atoms	3338	wwPDB-VP
Average B, all atoms (Å ²)	88.0	wwPDB-VP

Xtriage's analysis on translational NCS is as follows: *The largest off-origin peak in the Patterson function is 5.12% of the height of the origin peak. No significant pseudotranslation is detected.*

¹Intensities estimated from amplitudes.

²Theoretical values of $\langle |L| \rangle$, $\langle L^2 \rangle$ for acentric reflections are 0.5, 0.375 respectively for untwinned datasets, and 0.333, 0.2 for perfectly twinned datasets.

5 Model quality [i](#)

5.1 Standard geometry [i](#)

Bond lengths and bond angles in the following residue types are not validated in this section: MG, DTP, DG8

The Z score for a bond length (or angle) is the number of standard deviations the observed value is removed from the expected value. A bond length (or angle) with $|Z| > 5$ is considered an outlier worth inspection. RMSZ is the root-mean-square of all Z scores of the bond lengths (or angles).

Mol	Chain	Bond lengths		Bond angles	
		RMSZ	$\# Z > 5$	RMSZ	$\# Z > 5$
1	B	0.33	0/2997	0.64	5/4047 (0.1%)
2	T	0.73	0/160	1.53	3/245 (1.2%)
3	P	0.64	0/160	1.37	3/244 (1.2%)
All	All	0.38	0/3317	0.77	11/4536 (0.2%)

There are no bond length outliers.

All (11) bond angle outliers are listed below:

Mol	Chain	Res	Type	Atoms	Z	Observed($^{\circ}$)	Ideal($^{\circ}$)
1	B	316	GLU	CB-CA-C	-10.86	88.69	110.40
1	B	403	LEU	CB-CA-C	-7.76	95.46	110.20
2	T	841	DG	O4'-C4'-C3'	-7.22	101.61	104.50
1	B	403	LEU	N-CA-C	6.86	129.51	111.00
2	T	841	DG	O4'-C1'-N9	-6.28	103.61	108.00
3	P	873	DC	O4'-C4'-C3'	-6.20	102.02	104.50
3	P	871	DC	O4'-C4'-C3'	-6.16	102.04	104.50
1	B	317	ALA	N-CA-C	-6.01	94.76	111.00
1	B	405	LEU	N-CA-CB	5.53	121.46	110.40
3	P	867	DA	O4'-C1'-N9	5.33	111.73	108.00
2	T	844	DT	C5-C4-O4	-5.10	121.33	124.90

There are no chirality outliers.

There are no planarity outliers.

5.2 Too-close contacts [i](#)

In the following table, the Non-H and H(model) columns list the number of non-hydrogen atoms and hydrogen atoms in the chain respectively. The H(added) column lists the number of hydrogen

atoms added and optimized by MolProbity. The Clashes column lists the number of clashes within the asymmetric unit, whereas Symm-Clashes lists symmetry related clashes.

Mol	Chain	Non-H	H(model)	H(added)	Clashes	Symm-Clashes
1	B	2951	0	3011	136	0
2	T	183	0	100	28	0
3	P	143	0	78	4	0
4	B	30	0	12	3	0
5	B	3	0	0	0	0
6	B	24	0	0	0	0
6	P	4	0	0	0	0
All	All	3338	0	3201	166	0

The all-atom clashscore is defined as the number of clashes found per 1000 atoms (including hydrogen atoms). The all-atom clashscore for this structure is 26.

All (166) close contacts within the same asymmetric unit are listed below, sorted by their clash magnitude.

Atom-1	Atom-2	Interatomic distance (Å)	Clash overlap (Å)
1:B:316:GLU:O	1:B:320:LYS:HD2	1.26	1.27
2:T:840:DG8:H4	2:T:840:DG8:N3	1.45	1.26
2:T:840:DG8:H9	2:T:840:DG8:H17	1.16	1.11
1:B:313:SER:O	1:B:401:PHE:HZ	1.33	1.11
1:B:316:GLU:O	1:B:320:LYS:CD	2.02	1.07
1:B:313:SER:O	1:B:401:PHE:CZ	2.13	1.02
2:T:840:DG8:H9	2:T:840:DG8:C26	1.95	0.95
2:T:840:DG8:C5'	2:T:840:DG8:N3	2.30	0.94
1:B:399:MET:HG3	1:B:400:PRO:HD2	1.53	0.91
1:B:396:ASN:HD21	1:B:398:LYS:HG2	1.36	0.90
1:B:396:ASN:ND2	1:B:398:LYS:HG2	1.86	0.89
1:B:239:ILE:HD11	1:B:284:LEU:HB3	1.54	0.88
1:B:267:LYS:H	1:B:267:LYS:HD2	1.41	0.82
1:B:239:ILE:CD1	1:B:284:LEU:HB3	2.09	0.81
1:B:239:ILE:HD11	1:B:284:LEU:HD13	1.62	0.81
2:T:840:DG8:H17	2:T:840:DG8:C1'	2.05	0.80
2:T:841:DG:H2'	2:T:842:DG:O4'	1.84	0.78
1:B:310:LYS:HA	1:B:402:HIS:NE2	2.02	0.74
1:B:346:ILE:HG22	1:B:406:LEU:HD23	1.73	0.70
2:T:840:DG8:H4	2:T:840:DG8:C2	2.22	0.70
1:B:392:ARG:HH11	1:B:392:ARG:HG2	1.58	0.68
2:T:841:DG:H2''	2:T:842:DG:OP1	1.93	0.67
1:B:346:ILE:O	1:B:346:ILE:HG13	1.95	0.67
1:B:346:ILE:HG22	1:B:406:LEU:CD2	2.24	0.67

Continued on next page...

Continued from previous page...

Atom-1	Atom-2	Interatomic distance (Å)	Clash overlap (Å)
1:B:305:GLU:OE2	1:B:405:LEU:HD11	1.95	0.67
1:B:346:ILE:HB	1:B:403:LEU:HD21	1.77	0.66
1:B:120:VAL:HG22	1:B:130:VAL:HG22	1.78	0.66
1:B:325:LEU:O	1:B:329:LEU:HG	1.95	0.66
2:T:840:DG8:O1P	2:T:840:DG8:N2	2.30	0.65
1:B:161:GLN:NE2	1:B:224:GLU:HG2	2.13	0.63
2:T:841:DG:N3	2:T:841:DG:O4'	2.31	0.62
2:T:846:DC:H1'	2:T:847:DT:H5''	1.81	0.62
1:B:95:ASN:HD21	1:B:97:GLU:HB2	1.65	0.61
1:B:117:SER:HB2	1:B:135:MET:HE3	1.82	0.60
1:B:307:SER:HB3	1:B:405:LEU:HD12	1.82	0.60
1:B:123:LEU:HB3	1:B:127:GLU:HB2	1.83	0.60
1:B:315:VAL:O	1:B:316:GLU:HB2	2.01	0.60
2:T:840:DG8:C36	2:T:841:DG:C8	2.85	0.60
1:B:399:MET:HG3	1:B:400:PRO:CD	2.29	0.59
1:B:359:SER:O	1:B:360:ARG:HD2	2.03	0.59
1:B:132:LEU:O	1:B:136:VAL:HG23	2.03	0.59
2:T:846:DC:H2''	2:T:847:DT:H5'	1.85	0.58
1:B:343:ARG:HB3	1:B:361:GLN:HB2	1.85	0.58
1:B:112:LEU:O	1:B:112:LEU:HD12	2.04	0.58
1:B:237:LYS:O	1:B:237:LYS:HG2	2.04	0.57
1:B:403:LEU:O	1:B:404:THR:OG1	2.10	0.57
1:B:396:ASN:HD21	1:B:398:LYS:HE3	1.68	0.57
1:B:55:LEU:HD12	1:B:56:GLY:H	1.70	0.57
1:B:399:MET:CG	1:B:400:PRO:HD2	2.31	0.57
2:T:846:DC:H1'	2:T:847:DT:C5'	2.35	0.56
2:T:840:DG8:P	2:T:840:DG8:H12	2.29	0.56
1:B:315:VAL:O	1:B:316:GLU:CB	2.54	0.56
1:B:70:ALA:O	1:B:75:VAL:HB	2.06	0.56
3:P:872:DC:H2'	3:P:873:DC:C6	2.40	0.56
1:B:161:GLN:HE22	1:B:224:GLU:HG2	1.71	0.55
1:B:117:SER:HB2	1:B:135:MET:CE	2.36	0.55
1:B:80:ASN:OD1	1:B:82:ARG:HG2	2.06	0.54
4:B:501:DTP:O5'	4:B:501:DTP:H8	2.07	0.54
1:B:204:LEU:CD2	1:B:240:PRO:HD2	2.37	0.54
1:B:321:ILE:O	1:B:325:LEU:HB2	2.09	0.53
1:B:61:TYR:O	1:B:81:VAL:HG23	2.08	0.53
2:T:840:DG8:O4'	2:T:840:DG8:N3	2.42	0.53
1:B:307:SER:OG	2:T:840:DG8:H6	2.09	0.53
1:B:340:HIS:CD2	1:B:414:LYS:HD3	2.44	0.53
2:T:844:DT:H2''	2:T:845:DC:O5'	2.08	0.53

Continued on next page...

Continued from previous page...

Atom-1	Atom-2	Interatomic distance (Å)	Clash overlap (Å)
1:B:116:PHE:C	1:B:135:MET:HE1	2.29	0.52
1:B:302:PHE:HE1	1:B:413:LEU:HD21	1.74	0.52
1:B:250:LEU:HA	1:B:253:LEU:HD12	1.91	0.52
1:B:239:ILE:HD11	1:B:284:LEU:CD1	2.35	0.52
1:B:267:LYS:H	1:B:267:LYS:CD	2.12	0.52
1:B:82:ARG:HG3	1:B:83:ASP:N	2.25	0.51
1:B:55:LEU:HD12	1:B:56:GLY:N	2.25	0.51
1:B:61:TYR:C	1:B:81:VAL:HG23	2.31	0.51
1:B:149:SER:HB3	1:B:150:ALA:HA	1.92	0.51
1:B:307:SER:HA	1:B:404:THR:O	2.11	0.51
1:B:303:SER:HA	1:B:328:LEU:HD21	1.92	0.51
1:B:227:GLN:OE1	1:B:230:ILE:HD11	2.11	0.51
1:B:73:LEU:HD23	1:B:73:LEU:N	2.26	0.51
1:B:332:VAL:HG21	1:B:410:PHE:CD1	2.46	0.50
1:B:381:THR:N	1:B:382:PRO:HD2	2.25	0.50
1:B:168:VAL:HG22	1:B:172:ARG:HD3	1.91	0.50
1:B:325:LEU:HD11	1:B:383:MET:HB3	1.94	0.50
1:B:311:CYS:H	1:B:402:HIS:CD2	2.30	0.50
1:B:35:LEU:HD12	1:B:38:PHE:CE1	2.47	0.50
1:B:347:ARG:O	1:B:403:LEU:O	2.30	0.50
1:B:347:ARG:NH2	1:B:405:LEU:HD13	2.26	0.49
3:P:872:DC:H2'	3:P:873:DC:H6	1.76	0.49
1:B:346:ILE:HB	1:B:403:LEU:CD2	2.41	0.49
1:B:151:VAL:O	1:B:178:GLN:NE2	2.45	0.49
1:B:311:CYS:O	1:B:402:HIS:HA	2.12	0.49
1:B:27:SER:O	1:B:172:ARG:NH2	2.45	0.49
2:T:841:DG:O6	3:P:873:DC:N3	2.46	0.49
2:T:844:DT:H2'	2:T:845:DC:C6	2.46	0.49
1:B:82:ARG:HG3	1:B:83:ASP:H	1.77	0.49
1:B:239:ILE:HD11	1:B:284:LEU:CB	2.35	0.49
1:B:41:GLN:HE22	1:B:193:LEU:HA	1.78	0.49
1:B:55:LEU:O	1:B:66:CYS:HB2	2.12	0.48
1:B:178:GLN:O	1:B:182:GLU:HG3	2.12	0.48
1:B:103:ARG:HH21	1:B:103:ARG:HG2	1.78	0.48
2:T:843:DG:H2'	2:T:844:DT:C6	2.48	0.48
1:B:265:SER:OG	1:B:268:ILE:HG13	2.13	0.48
1:B:95:ASN:ND2	1:B:97:GLU:H	2.11	0.48
1:B:348:ARG:CB	1:B:403:LEU:HD11	2.44	0.48
1:B:78:LEU:O	1:B:78:LEU:HD13	2.14	0.48
1:B:364:ILE:HG22	1:B:368:VAL:CG2	2.44	0.47
1:B:413:LEU:N	1:B:413:LEU:HD12	2.30	0.47

Continued on next page...

Continued from previous page...

Atom-1	Atom-2	Interatomic distance (Å)	Clash overlap (Å)
1:B:344:LEU:HD12	1:B:407:SER:O	2.14	0.47
1:B:342:VAL:HG23	1:B:410:PHE:CD2	2.50	0.47
1:B:313:SER:O	1:B:401:PHE:CE1	2.67	0.46
1:B:204:LEU:HD21	1:B:240:PRO:HD2	1.97	0.46
1:B:140:LEU:O	1:B:143:LEU:HB2	2.16	0.46
1:B:343:ARG:CG	1:B:409:CYS:HB3	2.46	0.46
1:B:392:ARG:CG	1:B:392:ARG:HH11	2.25	0.46
1:B:379:VAL:O	1:B:379:VAL:HG13	2.16	0.45
1:B:305:GLU:HB2	2:T:841:DG:O3'	2.15	0.45
1:B:57:VAL:O	1:B:64:VAL:HG22	2.17	0.45
1:B:328:LEU:O	1:B:332:VAL:HG23	2.16	0.45
1:B:347:ARG:HH22	1:B:405:LEU:HD13	1.82	0.45
1:B:224:GLU:CD	1:B:224:GLU:H	2.20	0.44
1:B:303:SER:CA	1:B:328:LEU:HD21	2.47	0.44
1:B:67:ASN:C	1:B:67:ASN:HD22	2.21	0.44
1:B:35:LEU:HD12	1:B:38:PHE:CD1	2.52	0.44
1:B:364:ILE:HG22	1:B:368:VAL:HG23	2.00	0.44
1:B:261:LEU:HD23	1:B:285:SER:HB3	2.00	0.44
1:B:401:PHE:CD2	1:B:402:HIS:N	2.86	0.44
1:B:370:GLN:O	1:B:371:LYS:C	2.55	0.44
1:B:346:ILE:O	1:B:346:ILE:CG1	2.64	0.44
1:B:123:LEU:O	1:B:127:GLU:HB2	2.17	0.44
1:B:327:SER:O	1:B:330:ASN:HB2	2.18	0.44
1:B:204:LEU:HG	1:B:284:LEU:HD22	2.01	0.43
1:B:317:ALA:O	1:B:321:ILE:HG13	2.19	0.43
1:B:360:ARG:HB3	1:B:390:LEU:HD22	2.00	0.43
1:B:46:SER:O	1:B:48:PRO:HD3	2.18	0.43
1:B:164:ASN:OD1	1:B:166:LEU:HB2	2.19	0.43
1:B:369:ILE:HG22	1:B:369:ILE:O	2.18	0.43
1:B:380:MET:C	1:B:382:PRO:HD2	2.39	0.43
1:B:59:GLN:NE2	1:B:96:GLY:O	2.52	0.42
1:B:308:PHE:CE2	1:B:311:CYS:HB2	2.54	0.42
2:T:844:DT:C2'	2:T:845:DC:O5'	2.68	0.42
2:T:845:DC:H2''	2:T:846:DC:H6	1.84	0.42
1:B:401:PHE:O	1:B:402:HIS:O	2.37	0.42
1:B:161:GLN:NE2	1:B:224:GLU:CG	2.83	0.42
1:B:347:ARG:HB2	1:B:357:ARG:HG2	2.01	0.42
3:P:872:DC:H2''	3:P:873:DC:H5'	2.02	0.42
1:B:343:ARG:HG2	1:B:409:CYS:HB3	2.02	0.42
1:B:85:LYS:HA	1:B:85:LYS:HD2	1.82	0.42
1:B:105:MET:O	1:B:109:VAL:HG23	2.20	0.41

Continued on next page...

Continued from previous page...

Atom-1	Atom-2	Interatomic distance (Å)	Clash overlap (Å)
1:B:121:GLU:HB2	1:B:294:ILE:O	2.20	0.41
1:B:48:PRO:C	1:B:50:LEU:N	2.71	0.41
1:B:123:LEU:HD22	1:B:129:PHE:HE1	1.86	0.41
4:B:501:DTP:N3	2:T:840:DG8:C37	2.83	0.41
1:B:61:TYR:O	1:B:62:LEU:HD23	2.20	0.41
2:T:840:DG8:C27	2:T:841:DG:C4	3.04	0.41
2:T:843:DG:H2'	2:T:844:DT:H6	1.85	0.41
1:B:41:GLN:HE22	1:B:194:THR:H	1.69	0.41
1:B:59:GLN:O	1:B:60:LYS:HB2	2.21	0.41
1:B:338:LYS:O	1:B:413:LEU:HA	2.20	0.41
1:B:55:LEU:H	1:B:67:ASN:HD21	1.68	0.40
1:B:255:ILE:HD11	1:B:264:PHE:CD1	2.55	0.40
1:B:100:THR:O	1:B:104:GLU:HG3	2.20	0.40
4:B:501:DTP:C2	2:T:840:DG8:C36	3.00	0.40
1:B:265:SER:HB3	1:B:268:ILE:HD12	2.03	0.40
1:B:343:ARG:CB	1:B:361:GLN:HB2	2.51	0.40

There are no symmetry-related clashes.

5.3 Torsion angles ⓘ

5.3.1 Protein backbone ⓘ

In the following table, the Percentiles column shows the percent Ramachandran outliers of the chain as a percentile score with respect to all X-ray entries followed by that with respect to entries of similar resolution.

The Analysed column shows the number of residues for which the backbone conformation was analysed, and the total number of residues.

Mol	Chain	Analysed	Favoured	Allowed	Outliers	Percentiles
1	B	373/420 (89%)	321 (86%)	50 (13%)	2 (0%)	34 71

All (2) Ramachandran outliers are listed below:

Mol	Chain	Res	Type
1	B	402	HIS
1	B	369	ILE

5.3.2 Protein sidechains ⓘ

In the following table, the Percentiles column shows the percent sidechain outliers of the chain as a percentile score with respect to all X-ray entries followed by that with respect to entries of similar resolution.

The Analysed column shows the number of residues for which the sidechain conformation was analysed, and the total number of residues.

Mol	Chain	Analysed	Rotameric	Outliers	Percentiles	
1	B	333/376 (89%)	305 (92%)	28 (8%)	14	37

All (28) residues with a non-rotameric sidechain are listed below:

Mol	Chain	Res	Type
1	B	27	SER
1	B	67	ASN
1	B	78	LEU
1	B	87	LYS
1	B	101	ARG
1	B	103	ARG
1	B	105	MET
1	B	112	LEU
1	B	142	GLN
1	B	143	LEU
1	B	149	SER
1	B	204	LEU
1	B	224	GLU
1	B	227	GLN
1	B	230	ILE
1	B	239	ILE
1	B	267	LYS
1	B	275	ILE
1	B	325	LEU
1	B	334	GLN
1	B	348	ARG
1	B	361	GLN
1	B	367	HIS
1	B	379	VAL
1	B	392	ARG
1	B	393	ASN
1	B	396	ASN
1	B	405	LEU

Some sidechains can be flipped to improve hydrogen bonding and reduce clashes. All (6) such

sidechains are listed below:

Mol	Chain	Res	Type
1	B	41	GLN
1	B	90	GLN
1	B	95	ASN
1	B	330	ASN
1	B	361	GLN
1	B	396	ASN

5.3.3 RNA ⓘ

There are no RNA molecules in this entry.

5.4 Non-standard residues in protein, DNA, RNA chains ⓘ

1 non-standard protein/DNA/RNA residue is modelled in this entry.

In the following table, the Counts columns list the number of bonds (or angles) for which Mogul statistics could be retrieved, the number of bonds (or angles) that are observed in the model and the number of bonds (or angles) that are defined in the chemical component dictionary. The Link column lists molecule types, if any, to which the group is linked. The Z score for a bond length (or angle) is the number of standard deviations the observed value is removed from the expected value. A bond length (or angle) with $|Z| > 2$ is considered an outlier worth inspection. RMSZ is the root-mean-square of all Z scores of the bond lengths (or angles).

Mol	Type	Chain	Res	Link	Bond lengths			Bond angles		
					Counts	RMSZ	$\# Z > 2$	Counts	RMSZ	$\# Z > 2$
2	DG8	T	840	-	36,45,46	2.11	4 (11%)	51,68,71	2.09	10 (19%)

In the following table, the Chirals column lists the number of chiral outliers, the number of chiral centers analysed, the number of these observed in the model and the number defined in the chemical component dictionary. Similar counts are reported in the Torsion and Rings columns. '-' means no outliers of that kind were identified.

Mol	Type	Chain	Res	Link	Chirals	Torsions	Rings
2	DG8	T	840	-	-	0/5/25/26	0/7/7/7

All (4) bond length outliers are listed below:

Mol	Chain	Res	Type	Atoms	Z	Observed(Å)	Ideal(Å)
2	T	840	DG8	C25-C30	-2.08	1.39	1.43
2	T	840	DG8	C6-N1	2.93	1.38	1.33
2	T	840	DG8	C25-N24	3.59	1.48	1.39

Continued on next page...

Continued from previous page...

Mol	Chain	Res	Type	Atoms	Z	Observed(Å)	Ideal(Å)
2	T	840	DG8	C8-N24	10.30	1.48	1.35

All (10) bond angle outliers are listed below:

Mol	Chain	Res	Type	Atoms	Z	Observed(°)	Ideal(°)
2	T	840	DG8	C5-C6-N1	-8.96	111.34	123.59
2	T	840	DG8	O4'-C1'-N9	-5.35	103.69	108.22
2	T	840	DG8	C31-C30-C25	-2.56	119.12	123.00
2	T	840	DG8	C1'-N9-C4	-2.53	123.44	127.37
2	T	840	DG8	C30-C25-N24	-2.53	116.75	119.36
2	T	840	DG8	C25-N24-C8	-2.39	123.86	128.84
2	T	840	DG8	C2'-C3'-C4'	-2.38	97.84	102.77
2	T	840	DG8	O4'-C4'-C3'	-2.12	100.33	105.67
2	T	840	DG8	C2'-C1'-N9	3.47	119.30	115.83
2	T	840	DG8	C6-N1-C2	6.35	124.75	115.94

There are no chirality outliers.

There are no torsion outliers.

There are no ring outliers.

1 monomer is involved in 14 short contacts:

Mol	Chain	Res	Type	Clashes	Symm-Clashes
2	T	840	DG8	14	0

5.5 Carbohydrates [i](#)

There are no carbohydrates in this entry.

5.6 Ligand geometry [i](#)

Of 4 ligands modelled in this entry, 3 are monoatomic - leaving 1 for Mogul analysis.

In the following table, the Counts columns list the number of bonds (or angles) for which Mogul statistics could be retrieved, the number of bonds (or angles) that are observed in the model and the number of bonds (or angles) that are defined in the chemical component dictionary. The Link column lists molecule types, if any, to which the group is linked. The Z score for a bond length (or angle) is the number of standard deviations the observed value is removed from the expected value. A bond length (or angle) with $|Z| > 2$ is considered an outlier worth inspection. RMSZ is the root-mean-square of all Z scores of the bond lengths (or angles).

Mol	Type	Chain	Res	Link	Bond lengths			Bond angles		
					Counts	RMSZ	# Z > 2	Counts	RMSZ	# Z > 2
4	DTP	B	501	5	24,32,32	1.00	1 (4%)	32,50,50	1.71	5 (15%)

In the following table, the Chirals column lists the number of chiral outliers, the number of chiral centers analysed, the number of these observed in the model and the number defined in the chemical component dictionary. Similar counts are reported in the Torsion and Rings columns. '-' means no outliers of that kind were identified.

Mol	Type	Chain	Res	Link	Chirals	Torsions	Rings
4	DTP	B	501	5	-	0/18/34/34	0/3/3/3

All (1) bond length outliers are listed below:

Mol	Chain	Res	Type	Atoms	Z	Observed(Å)	Ideal(Å)
4	B	501	DTP	C5-C4	3.47	1.48	1.40

All (5) bond angle outliers are listed below:

Mol	Chain	Res	Type	Atoms	Z	Observed(°)	Ideal(°)
4	B	501	DTP	N3-C2-N1	-6.58	123.86	128.89
4	B	501	DTP	PA-O3A-PB	-3.36	123.29	132.73
4	B	501	DTP	C4-C5-N7	-2.86	106.85	109.48
4	B	501	DTP	PB-O3B-PG	-2.32	124.88	132.67
4	B	501	DTP	O3G-PG-O2G	2.22	115.83	107.38

There are no chirality outliers.

There are no torsion outliers.

There are no ring outliers.

1 monomer is involved in 3 short contacts:

Mol	Chain	Res	Type	Clashes	Symm-Clashes
4	B	501	DTP	3	0

5.7 Other polymers [i](#)

There are no such residues in this entry.

5.8 Polymer linkage issues [i](#)

There are no chain breaks in this entry.

6 Fit of model and data [i](#)

6.1 Protein, DNA and RNA chains [i](#)

In the following table, the column labelled ‘#RSRZ> 2’ contains the number (and percentage) of RSRZ outliers, followed by percent RSRZ outliers for the chain as percentile scores relative to all X-ray entries and entries of similar resolution. The OWAB column contains the minimum, median, 95th percentile and maximum values of the occupancy-weighted average B-factor per residue. The column labelled ‘Q< 0.9’ lists the number of (and percentage) of residues with an average occupancy less than 0.9.

Mol	Chain	Analysed	<RSRZ>	#RSRZ>2	OWAB(Å ²)	Q<0.9
1	B	378/420 (90%)	0.10	13 (3%) 49 41	49, 82, 146, 185	0
2	T	7/8 (87%)	-0.35	0 100 100	61, 72, 91, 112	0
3	P	7/7 (100%)	-0.50	0 100 100	65, 68, 80, 83	0
All	All	392/435 (90%)	0.08	13 (3%) 50 42	49, 81, 143, 185	0

All (13) RSRZ outliers are listed below:

Mol	Chain	Res	Type	RSRZ
1	B	349	TYR	5.0
1	B	72	LYS	3.3
1	B	312	SER	3.1
1	B	73	LEU	2.8
1	B	244	TYR	2.6
1	B	416	LEU	2.5
1	B	347	ARG	2.5
1	B	74	GLY	2.4
1	B	336	GLY	2.3
1	B	52	ASP	2.2
1	B	415	ALA	2.1
1	B	150	ALA	2.1
1	B	348	ARG	2.1

6.2 Non-standard residues in protein, DNA, RNA chains [i](#)

In the following table, the Atoms column lists the number of modelled atoms in the group and the number defined in the chemical component dictionary. LLDF column lists the quality of electron density of the group with respect to its neighbouring residues in protein, DNA or RNA chains. The B-factors column lists the minimum, median, 95th percentile and maximum values of B factors of atoms in the group. The column labelled ‘Q< 0.9’ lists the number of atoms with occupancy less than 0.9.

Mol	Type	Chain	Res	Atoms	RSCC	RSR	LLDF	B-factors(\AA^2)	Q<0.9
2	DG8	T	840	39/40	0.76	0.34	-	92,122,162,163	0

6.3 Carbohydrates [i](#)

There are no carbohydrates in this entry.

6.4 Ligands [i](#)

In the following table, the Atoms column lists the number of modelled atoms in the group and the number defined in the chemical component dictionary. LLDF column lists the quality of electron density of the group with respect to its neighbouring residues in protein, DNA or RNA chains. The B-factors column lists the minimum, median, 95th percentile and maximum values of B factors of atoms in the group. The column labelled 'Q< 0.9' lists the number of atoms with occupancy less than 0.9.

Mol	Type	Chain	Res	Atoms	RSCC	RSR	LLDF	B-factors(\AA^2)	Q<0.9
5	MG	B	504	1/1	0.89	0.25	1.15	76,76,76,76	0
4	DTP	B	501	30/30	0.89	0.20	-0.10	92,102,120,141	0
5	MG	B	502	1/1	0.82	0.55	-	80,80,80,80	0
5	MG	B	503	1/1	0.83	0.08	-	92,92,92,92	0

6.5 Other polymers [i](#)

There are no such residues in this entry.