



Full wwPDB X-ray Structure Validation Report ⓘ

Feb 1, 2016 – 04:27 PM GMT

PDB ID : 4F0U
Title : X-Ray Crystal Structure of Allophycocyanin from *Synechococcus elongatus* PCC 7942
Authors : Marx, A.; Adir, N.
Deposited on : 2012-05-05
Resolution : 2.50 Å(reported)

This is a Full wwPDB X-ray Structure Validation Report for a publicly released PDB entry.
We welcome your comments at validation@mail.wwpdb.org
A user guide is available at
<http://wwpdb.org/validation/2016/XrayValidationReportHelp>
with specific help available everywhere you see the ⓘ symbol.

The following versions of software and data (see [references ⓘ](#)) were used in the production of this report:

MolProbity : 4.02b-467
Mogul : 1.7 (RC4), CSD as536be (2015)
Xtriage (Phenix) : 1.9-1692
EDS : rb-20026688
Percentile statistics : 20151230.v01 (using entries in the PDB archive December 30th 2015)
Refmac : 5.8.0135
CCP4 : 6.5.0
Ideal geometry (proteins) : Engh & Huber (2001)
Ideal geometry (DNA, RNA) : Parkinson et al. (1996)
Validation Pipeline (wwPDB-VP) : trunk26865

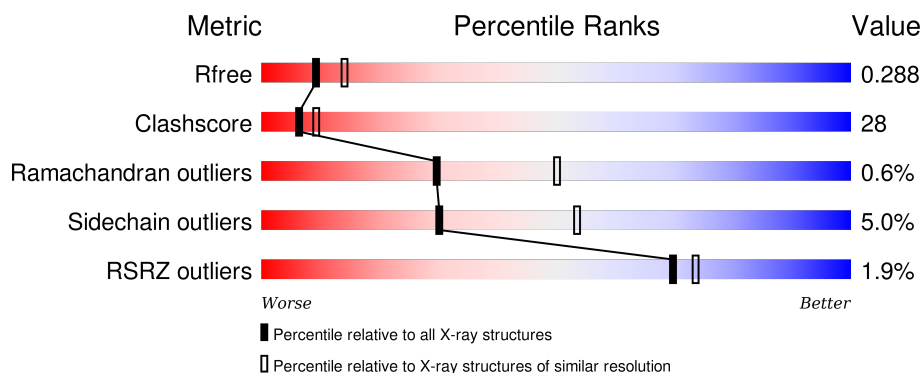
1 Overall quality at a glance

The following experimental techniques were used to determine the structure:

X-RAY DIFFRACTION

The reported resolution of this entry is 2.50 Å.

Percentile scores (ranging between 0-100) for global validation metrics of the entry are shown in the following graphic. The table shows the number of entries on which the scores are based.




Metric	Whole archive (#Entries)	Similar resolution (#Entries, resolution range(Å))
R_{free}	91344	3553 (2.50-2.50)
Clashscore	102246	4242 (2.50-2.50)
Ramachandran outliers	100387	4156 (2.50-2.50)
Sidechain outliers	100360	4158 (2.50-2.50)
RSRZ outliers	91569	3562 (2.50-2.50)

The table below summarises the geometric issues observed across the polymeric chains and their fit to the electron density. The red, orange, yellow and green segments on the lower bar indicate the fraction of residues that contain outliers for ≥ 3 , 2, 1 and 0 types of geometric quality criteria. A grey segment represents the fraction of residues that are not modelled. The numeric value for each fraction is indicated below the corresponding segment, with a dot representing fractions $\leq 5\%$. The upper red bar (where present) indicates the fraction of residues that have poor fit to the electron density. The numeric value is given above the bar.

Mol	Chain	Length	Quality of chain
1	A	160	<div> <div>2%</div> <div>61% 37%</div> <div>.</div> </div>
1	C	160	<div> <div>%</div> <div>62% 35%</div> <div>.</div> </div>
1	E	160	<div> <div>%</div> <div>59% 39%</div> <div>.</div> </div>
2	B	161	<div> <div>2%</div> <div>66% 32%</div> <div>.</div> </div>
2	D	161	<div> <div>%</div> <div>58% 38%</div> <div>..</div> </div>

Continued on next page...

Continued from previous page...

Mol	Chain	Length	Quality of chain
2	F	161	

The following table lists non-polymeric compounds, carbohydrate monomers and non-standard residues in protein, DNA, RNA chains that are outliers for geometric or electron-density-fit criteria:

Mol	Type	Chain	Res	Chirality	Geometry	Clashes	Electron density
2	MEN	F	72	-	-	X	-

2 Entry composition

There are 4 unique types of molecules in this entry. The entry contains 7758 atoms, of which 0 are hydrogens and 0 are deuteriums.

In the tables below, the ZeroOcc column contains the number of atoms modelled with zero occupancy, the AltConf column contains the number of residues with at least one atom in alternate conformation and the Trace column contains the number of residues modelled with at most 2 atoms.

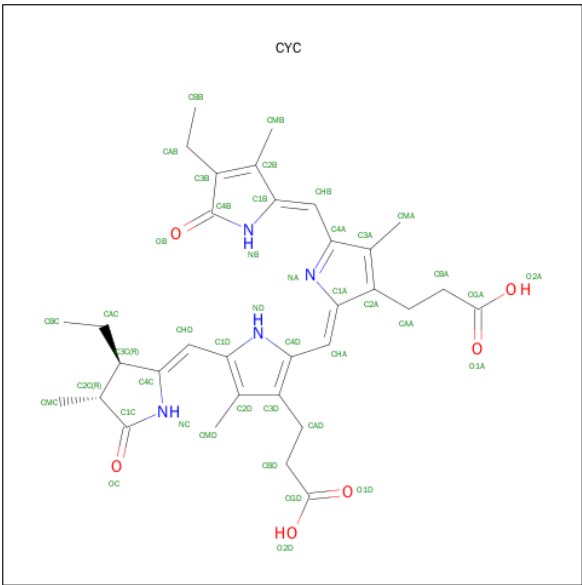
- Molecule 1 is a protein called Allophycocyanin alpha chain.

Mol	Chain	Residues	Atoms					ZeroOcc	AltConf	Trace
1	A	160	Total	C	N	O	S	0	0	0
			1216	761	209	243	3			
1	C	160	Total	C	N	O	S	0	0	0
			1216	761	209	243	3			
1	E	160	Total	C	N	O	S	0	0	0
			1216	761	209	243	3			

- Molecule 2 is a protein called Allophycocyanin, beta subunit.

Mol	Chain	Residues	Atoms					ZeroOcc	AltConf	Trace
2	B	161	Total	C	N	O	S	0	0	0
			1222	767	207	243	5			
2	D	161	Total	C	N	O	S	0	0	0
			1222	767	207	243	5			
2	F	161	Total	C	N	O	S	0	0	0
			1222	767	207	243	5			

- Molecule 3 is PHYCOCYANOBILIN (three-letter code: CYC) (formula: $C_{33}H_{40}N_4O_6$).



Mol	Chain	Residues	Atoms				ZeroOcc	AltConf
3	A	1	Total	C	N	O	0	0
			43	33	4	6		
3	B	1	Total	C	N	O	0	0
			43	33	4	6		
3	C	1	Total	C	N	O	0	0
			43	33	4	6		
3	D	1	Total	C	N	O	0	0
			43	33	4	6		
3	E	1	Total	C	N	O	0	0
			43	33	4	6		
3	F	1	Total	C	N	O	0	0
			43	33	4	6		

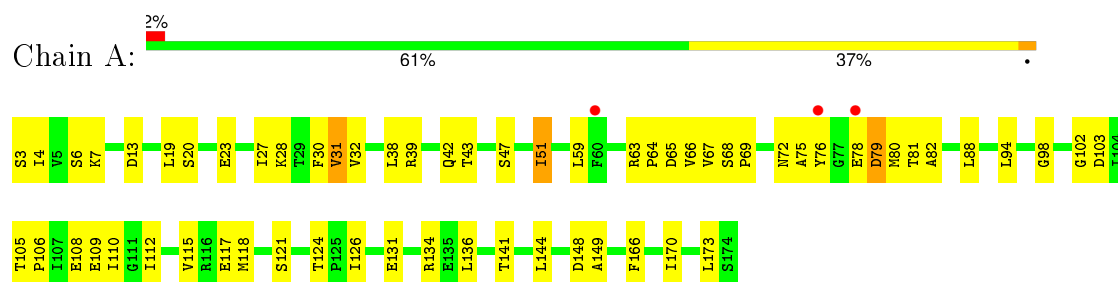
- Molecule 4 is water.

Mol	Chain	Residues	Atoms		ZeroOcc	AltConf
4	A	40	Total	O	0	0
			40	40		
4	B	32	Total	O	0	0
			32	32		
4	C	33	Total	O	0	0
			33	33		
4	D	30	Total	O	0	0
			30	30		
4	E	21	Total	O	0	0
			21	21		
4	F	30	Total	O	0	0
			30	30		

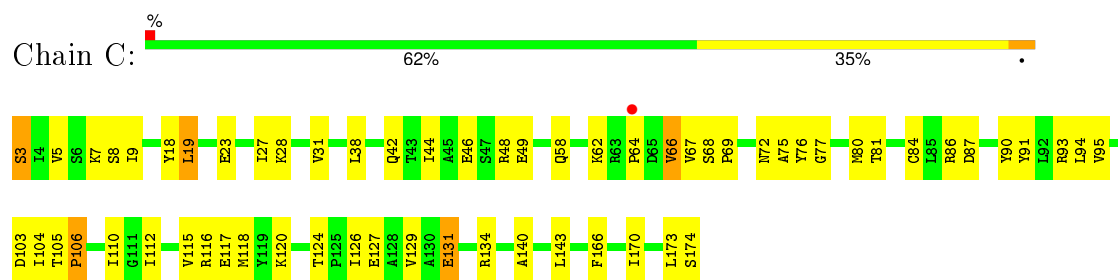
3 Residue-property plots

These plots are drawn for all protein, RNA and DNA chains in the entry. The first graphic for a chain summarises the proportions of errors displayed in the second graphic. The second graphic shows the sequence view annotated by issues in geometry and electron density. Residues are color-coded according to the number of geometric quality criteria for which they contain at least one outlier: green = 0, yellow = 1, orange = 2 and red = 3 or more. A red dot above a residue indicates a poor fit to the electron density ($\text{RSRZ} > 2$). Stretches of 2 or more consecutive residues without any outlier are shown as a green connector. Residues present in the sample, but not in the model, are shown in grey.

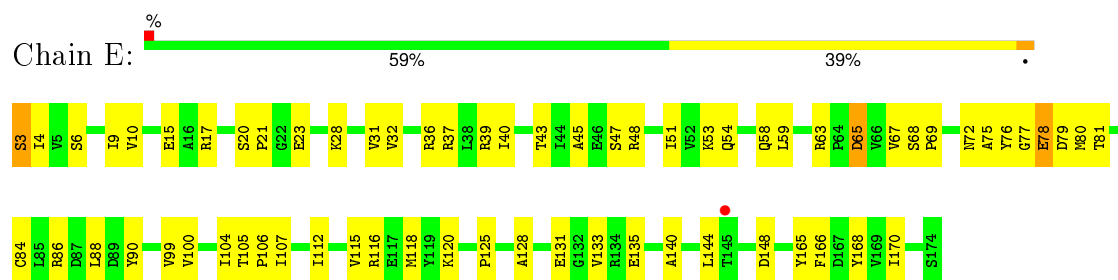
- Molecule 1: Allophycocyanin alpha chain



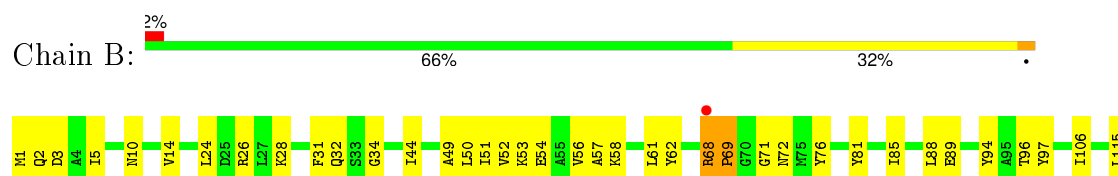
- Molecule 1: Allophycocyanin alpha chain



- Molecule 1: Allophycocyanin alpha chain

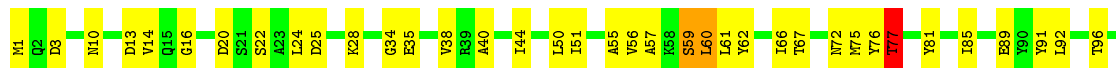


- Molecule 2: Allophycocyanin, beta subunit





• Molecule 2: Allophycocyanin, beta subunit



• Molecule 2: Allophycocyanin, beta subunit



4 Data and refinement statistics

Property	Value	Source
Space group	C 2 2 21	Depositor
Cell constants a, b, c, α , β , γ	99.55Å 165.33Å 151.15Å 90.00° 90.00° 90.00°	Depositor
Resolution (Å)	48.00 – 2.50 47.28 – 2.50	Depositor EDS
% Data completeness (in resolution range)	(Not available) (48.00-2.50) 98.3 (47.28-2.50)	Depositor EDS
R_{merge}	0.08	Depositor
R_{sym}	(Not available)	Depositor
$\langle I/\sigma(I) \rangle$ ¹	2.08 (at 2.51Å)	Xtriage
Refinement program	CNS 1.1	Depositor
R, R_{free}	0.235 , 0.287 0.237 , 0.288	Depositor DCC
R_{free} test set	2152 reflections (5.04%)	DCC
Wilson B-factor (Å ²)	44.4	Xtriage
Anisotropy	0.036	Xtriage
Bulk solvent k_{sol} (e/Å ³), B_{sol} (Å ²)	0.34 , 46.1	EDS
Estimated twinning fraction	0.022 for 1/2*h-1/2*k,-3/2*h-1/2*k,-l 0.034 for 1/2*h+1/2*k,3/2*h-1/2*k,-l	Xtriage
L-test for twinning ²	$\langle L \rangle = 0.47$, $\langle L^2 \rangle = 0.30$	Xtriage
Outliers	0 of 42693 reflections	Xtriage
F_o, F_c correlation	0.93	EDS
Total number of atoms	7758	wwPDB-VP
Average B, all atoms (Å ²)	49.0	wwPDB-VP

Xtriage's analysis on translational NCS is as follows: *The largest off-origin peak in the Patterson function is 3.29% of the height of the origin peak. No significant pseudotranslation is detected.*

¹Intensities estimated from amplitudes.

²Theoretical values of $\langle |L| \rangle$, $\langle L^2 \rangle$ for acentric reflections are 0.5, 0.375 respectively for untwinned datasets, and 0.333, 0.2 for perfectly twinned datasets.

5 Model quality

5.1 Standard geometry

Bond lengths and bond angles in the following residue types are not validated in this section: CYC, MEN

The Z score for a bond length (or angle) is the number of standard deviations the observed value is removed from the expected value. A bond length (or angle) with $|Z| > 5$ is considered an outlier worth inspection. RMSZ is the root-mean-square of all Z scores of the bond lengths (or angles).

Mol	Chain	Bond lengths		Bond angles	
		RMSZ	$\# Z > 5$	RMSZ	$\# Z > 5$
1	A	0.80	0/1231	0.70	0/1664
1	C	0.89	1/1231 (0.1%)	0.63	0/1664
1	E	0.99	0/1231	0.73	0/1664
2	B	0.80	0/1227	0.63	0/1659
2	D	0.99	2/1227 (0.2%)	0.69	0/1659
2	F	0.74	0/1227	0.74	2/1659 (0.1%)
All	All	0.87	3/7374 (0.0%)	0.69	2/9969 (0.0%)

All (3) bond length outliers are listed below:

Mol	Chain	Res	Type	Atoms	Z	Observed(Å)	Ideal(Å)
2	D	77	THR	C-N	-5.52	1.21	1.34
1	C	18	TYR	CD2-CE2	-5.30	1.31	1.39
2	D	119	TYR	CD1-CE1	-5.24	1.31	1.39

All (2) bond angle outliers are listed below:

Mol	Chain	Res	Type	Atoms	Z	Observed(°)	Ideal(°)
2	F	19	LEU	CB-CA-C	5.98	121.57	110.20
2	F	71	GLY	N-CA-C	-5.48	99.39	113.10

There are no chirality outliers.

There are no planarity outliers.

5.2 Too-close contacts

In the following table, the Non-H and H(model) columns list the number of non-hydrogen atoms and hydrogen atoms in the chain respectively. The H(added) column lists the number of hydrogen atoms added and optimized by MolProbity. The Clashes column lists the number of clashes within

the asymmetric unit, whereas Symm-Clashes lists symmetry related clashes.

Mol	Chain	Non-H	H(model)	H(added)	Clashes	Symm-Clashes
1	A	1216	0	1219	69	0
1	C	1216	0	1219	62	0
1	E	1216	0	1219	65	0
2	B	1222	0	1234	57	0
2	D	1222	0	1234	80	0
2	F	1222	0	1234	98	0
3	A	43	0	37	6	0
3	B	43	0	37	5	0
3	C	43	0	37	8	0
3	D	43	0	37	4	0
3	E	43	0	37	7	0
3	F	43	0	37	10	0
4	A	40	0	0	3	0
4	B	32	0	0	3	0
4	C	33	0	0	4	0
4	D	30	0	0	2	0
4	E	21	0	0	4	0
4	F	30	0	0	11	0
All	All	7758	0	7581	420	0

The all-atom clashscore is defined as the number of clashes found per 1000 atoms (including hydrogen atoms). The all-atom clashscore for this structure is 28.

All (420) close contacts within the same asymmetric unit are listed below, sorted by their clash magnitude.

Atom-1	Atom-2	Interatomic distance (Å)	Clash overlap (Å)
2:F:72:MEN:CE2	2:F:124:VAL:HG22	1.46	1.43
2:B:116:LYS:HE2	2:B:173:LEU:O	1.33	1.27
2:F:137:LYS:HE2	2:F:163:GLY:CA	1.67	1.22
2:F:172:GLY:O	2:F:173:LEU:HD23	1.41	1.19
2:B:115:LEU:CD2	2:B:173:LEU:HD21	1.79	1.12
2:B:115:LEU:HD23	2:B:173:LEU:HD21	1.12	1.12
2:F:137:LYS:HE2	2:F:163:GLY:HA3	1.12	1.11
2:F:146:PRO:O	2:F:150:ARG:HB2	1.52	1.10
2:F:72:MEN:HE22	2:F:124:VAL:CG2	1.82	1.08
1:A:47:SER:O	1:A:51:ILE:HG13	1.57	1.04
2:F:89:GLU:HG2	4:F:304:HOH:O	1.56	1.03
2:F:72:MEN:HE22	2:F:124:VAL:HG22	1.00	1.00
1:C:77:GLY:O	1:C:81:THR:HG23	1.62	0.99
2:F:172:GLY:C	2:F:173:LEU:HD23	1.82	0.99

Continued on next page...

Continued from previous page...

Atom-1	Atom-2	Interatomic distance (Å)	Clash overlap (Å)
1:A:68:SER:HB3	1:A:69:PRO:HD2	1.44	0.99
3:E:201:CYC:HB	3:E:201:CYC:HMA1	1.22	0.99
1:C:38:LEU:HB3	2:D:24:LEU:CD2	1.93	0.98
2:F:72:MEN:CE2	2:F:124:VAL:CG2	2.37	0.98
2:D:116:LYS:HE3	2:D:174:SER:O	1.65	0.96
1:A:59:LEU:O	1:A:59:LEU:HD23	1.65	0.95
2:F:79:ARG:HD3	4:F:317:HOH:O	1.65	0.94
2:F:137:LYS:CE	2:F:163:GLY:HA3	1.98	0.94
1:E:104:ILE:HG22	1:E:104:ILE:O	1.67	0.93
1:A:68:SER:HB3	1:A:69:PRO:CD	1.99	0.93
1:A:67:VAL:O	1:A:76:TYR:HD1	1.52	0.93
1:C:38:LEU:HD22	2:D:24:LEU:HD23	1.50	0.91
3:C:201:CYC:HMA1	3:C:201:CYC:HB	1.33	0.90
1:A:3:SER:HB2	2:B:3:ASP:OD2	1.72	0.89
2:B:115:LEU:HD23	2:B:173:LEU:CD2	2.02	0.89
1:A:144:LEU:HD23	1:A:149:ALA:HA	1.55	0.88
1:C:104:ILE:C	1:C:106:PRO:HD2	1.94	0.88
2:D:92:LEU:O	2:D:96:THR:HG23	1.73	0.88
3:A:201:CYC:HMA1	3:A:201:CYC:HB	1.39	0.87
2:F:72:MEN:HE21	2:F:124:VAL:HG22	1.55	0.87
1:E:67:VAL:HA	1:E:75:ALA:O	1.74	0.87
1:A:112:ILE:O	1:A:115:VAL:HG23	1.75	0.86
2:D:116:LYS:CE	2:D:174:SER:O	2.24	0.86
2:D:51:ILE:HD13	2:D:140:THR:HG22	1.57	0.86
2:D:55:ALA:O	2:D:59:SER:HB2	1.74	0.85
1:C:105:THR:N	1:C:106:PRO:HD2	1.89	0.85
2:F:72:MEN:HE21	2:F:124:VAL:HG13	1.57	0.85
2:B:136:ILE:O	2:B:140:THR:HG23	1.76	0.85
1:E:40:ILE:HG21	1:E:99:VAL:HG11	1.60	0.84
1:A:126:ILE:HD12	1:A:126:ILE:H	1.43	0.83
1:E:77:GLY:O	1:E:81:THR:HG23	1.77	0.83
2:F:60:LEU:HB3	2:F:75:MET:CE	2.08	0.82
2:D:116:LYS:HE2	2:D:173:LEU:O	1.77	0.82
2:F:60:LEU:HB3	2:F:75:MET:HE1	1.60	0.82
2:D:117:GLU:H	2:D:117:GLU:CD	1.83	0.81
1:A:67:VAL:HG22	1:A:75:ALA:O	1.81	0.80
2:F:145:GLY:O	2:F:149:GLY:N	2.13	0.80
1:C:105:THR:N	1:C:106:PRO:CD	2.45	0.80
2:B:116:LYS:HE2	2:B:173:LEU:C	2.01	0.80
1:C:38:LEU:HB3	2:D:24:LEU:HD22	1.63	0.80
1:A:67:VAL:CG1	1:A:67:VAL:O	2.30	0.79

Continued on next page...

Continued from previous page...

Atom-1	Atom-2	Interatomic distance (Å)	Clash overlap (Å)
1:E:36:ARG:O	1:E:40:ILE:HD13	1.80	0.79
1:E:104:ILE:O	1:E:104:ILE:CG2	2.30	0.79
2:F:147:ASP:HB2	4:F:322:HOH:O	1.83	0.79
1:C:58:GLN:O	1:C:62:LYS:HG3	1.83	0.78
1:A:108:GLU:HA	1:A:112:ILE:HB	1.66	0.78
2:D:38:VAL:CG1	2:D:38:VAL:O	2.30	0.78
2:D:1:MET:CE	2:D:106:ILE:HD12	2.14	0.78
2:D:144:VAL:CG1	2:D:148:ALA:HB3	2.14	0.77
1:E:105:THR:N	1:E:106:PRO:HD2	1.99	0.77
1:A:121:SER:HA	2:F:53:LYS:HE2	1.66	0.77
2:B:144:VAL:HG13	2:B:148:ALA:HB3	1.68	0.76
2:F:146:PRO:O	2:F:150:ARG:CB	2.34	0.75
2:D:1:MET:HE2	2:D:106:ILE:HD12	1.69	0.75
1:C:131:GLU:HG3	1:C:134:ARG:NH1	2.03	0.74
2:B:97:TYR:HB3	2:B:106:ILE:HD13	1.70	0.74
2:F:65:ASP:OD1	2:F:68:ARG:NH1	2.20	0.74
3:B:201:CYC:HMD2	3:B:201:CYC:HC	1.50	0.73
2:F:172:GLY:O	2:F:173:LEU:CD2	2.30	0.73
1:E:37:ARG:HH11	1:E:37:ARG:HG2	1.51	0.73
3:D:201:CYC:HMD2	3:D:201:CYC:HC	1.53	0.73
1:C:67:VAL:O	1:C:67:VAL:CG1	2.36	0.73
3:F:201:CYC:HMD2	3:F:201:CYC:HC	1.52	0.73
2:F:137:LYS:HE2	2:F:163:GLY:HA2	1.68	0.72
1:C:131:GLU:HA	1:C:134:ARG:HH11	1.53	0.72
1:C:67:VAL:O	1:C:67:VAL:HG13	1.88	0.72
2:D:129:THR:HG22	3:D:201:CYC:H3C	1.69	0.72
2:F:144:VAL:CG1	2:F:148:ALA:HB3	2.20	0.71
2:D:76:TYR:O	2:D:77:THR:OG1	2.10	0.70
1:A:126:ILE:HD12	1:A:126:ILE:N	2.04	0.70
2:D:20:ASP:C	2:D:20:ASP:OD1	2.30	0.70
1:A:72:ASN:HD22	1:A:124:THR:HG23	1.57	0.70
2:F:72:MEN:HE21	2:F:124:VAL:CG1	2.22	0.69
2:D:44:ILE:HG21	2:D:96:THR:HG21	1.73	0.69
1:A:68:SER:CB	1:A:69:PRO:HD2	2.20	0.69
1:C:42:GLN:O	1:C:46:GLU:HG3	1.93	0.69
4:C:328:HOH:O	2:D:13:ASP:HA	1.92	0.69
1:E:58:GLN:CB	1:E:135:GLU:OE2	2.40	0.68
1:A:72:ASN:ND2	1:A:124:THR:HG23	2.09	0.68
2:B:50:LEU:O	2:B:54:GLU:HG3	1.94	0.68
2:F:144:VAL:HG11	2:F:148:ALA:HB3	1.76	0.68
2:D:136:ILE:O	2:D:140:THR:HG23	1.94	0.67

Continued on next page...

Continued from previous page...

Atom-1	Atom-2	Interatomic distance (Å)	Clash overlap (Å)
2:D:67:THR:HG23	4:D:326:HOH:O	1.94	0.67
2:B:94:TYR:CD1	2:B:97:TYR:HD2	2.12	0.67
1:A:66:VAL:HG13	3:A:201:CYC:OC	1.95	0.67
1:E:76:TYR:O	1:E:80:MET:HG3	1.94	0.67
3:C:201:CYC:HMA1	3:C:201:CYC:NB	2.09	0.67
2:F:5:ILE:O	2:F:9:ILE:HG12	1.95	0.67
1:E:107:ILE:HG13	4:E:319:HOH:O	1.93	0.67
2:F:72:MEN:HE23	3:F:201:CYC:HMD2	1.74	0.67
2:B:10:ASN:O	2:B:14:VAL:HG23	1.94	0.67
2:D:85:ILE:O	2:D:89:GLU:HG3	1.96	0.66
2:D:144:VAL:HG12	2:D:148:ALA:HB3	1.75	0.66
2:D:66:ILE:HG22	2:D:75:MET:HB2	1.76	0.66
2:B:116:LYS:CE	2:B:173:LEU:O	2.28	0.66
1:C:75:ALA:O	1:C:81:THR:HG22	1.96	0.66
1:C:126:ILE:O	1:C:127:GLU:C	2.33	0.66
1:E:47:SER:O	1:E:51:ILE:HG12	1.96	0.66
2:B:51:ILE:HG21	2:B:140:THR:HG22	1.78	0.66
1:E:112:ILE:O	1:E:115:VAL:HG12	1.95	0.66
1:A:31:VAL:HG13	2:B:31:PHE:O	1.95	0.65
1:E:68:SER:HB3	1:E:69:PRO:HD2	1.77	0.65
1:E:105:THR:H	1:E:106:PRO:HD2	1.61	0.65
2:B:69:PRO:HA	2:B:76:TYR:CG	2.32	0.65
1:A:67:VAL:O	1:A:76:TYR:CD1	2.44	0.65
1:A:67:VAL:HG13	1:A:67:VAL:O	1.97	0.65
1:E:37:ARG:HG2	1:E:37:ARG:NH1	2.10	0.65
1:E:166:PHE:O	1:E:170:ILE:HG12	1.96	0.64
2:F:106:ILE:HG13	2:F:106:ILE:O	1.96	0.64
2:B:52:VAL:O	2:B:56:VAL:HG23	1.98	0.64
1:A:88:LEU:HB3	1:A:136:LEU:HD11	1.78	0.64
2:F:173:LEU:O	2:F:174:SER:C	2.37	0.64
1:C:72:ASN:ND2	3:C:201:CYC:HC	1.94	0.63
3:E:201:CYC:HC	3:E:201:CYC:HMD2	1.63	0.63
2:D:40:ALA:O	2:D:44:ILE:HG13	1.99	0.63
3:C:201:CYC:HMD2	3:C:201:CYC:HC	1.63	0.63
1:A:126:ILE:H	1:A:126:ILE:CD1	2.11	0.63
2:D:117:GLU:N	2:D:117:GLU:CD	2.52	0.63
1:C:31:VAL:HG11	2:D:34:GLY:HA3	1.81	0.63
1:A:109:GLU:HB3	4:F:317:HOH:O	1.99	0.63
1:E:105:THR:N	1:E:106:PRO:CD	2.61	0.63
1:C:27:ILE:HB	2:D:38:VAL:HG21	1.80	0.63
2:F:115:LEU:CD1	2:F:173:LEU:HD11	2.30	0.62

Continued on next page...

Continued from previous page...

Atom-1	Atom-2	Interatomic distance (Å)	Clash overlap (Å)
2:D:57:ALA:HA	2:D:61:LEU:HD12	1.80	0.62
1:A:4:ILE:HG22	1:A:30:PHE:CD2	2.35	0.62
1:A:64:PRO:HD2	1:A:65:ASP:H	1.64	0.62
1:A:148:ASP:HA	4:A:325:HOH:O	1.99	0.61
2:F:72:MEN:CE2	2:F:124:VAL:HG13	2.29	0.61
2:D:38:VAL:HG12	2:D:38:VAL:O	2.00	0.61
2:F:86:ARG:HD2	4:F:301:HOH:O	2.00	0.61
3:A:201:CYC:HMD2	3:A:201:CYC:HC	1.66	0.61
1:E:40:ILE:CG2	1:E:99:VAL:HG11	2.29	0.61
2:B:144:VAL:CG1	2:B:148:ALA:HB3	2.31	0.61
2:F:112:LEU:HD13	2:F:172:GLY:HA3	1.83	0.60
3:E:201:CYC:NB	3:E:201:CYC:HMA1	2.04	0.60
1:A:59:LEU:C	1:A:59:LEU:HD23	2.21	0.60
2:F:72:MEN:CE2	3:F:201:CYC:HMD2	2.31	0.60
2:D:38:VAL:HG13	2:D:38:VAL:O	2.01	0.60
3:A:201:CYC:NB	3:A:201:CYC:HMA1	2.13	0.60
2:D:1:MET:HE1	2:D:106:ILE:CD1	2.31	0.59
2:D:144:VAL:CG1	2:D:148:ALA:CB	2.80	0.59
2:B:115:LEU:CD2	2:B:173:LEU:CD2	2.69	0.59
1:C:72:ASN:ND2	3:C:201:CYC:HMD2	2.18	0.59
2:F:51:ILE:HD12	2:F:140:THR:HG22	1.84	0.59
1:C:23:GLU:O	1:C:27:ILE:HG12	2.03	0.59
1:C:116:ARG:HH22	1:C:174:SER:CA	2.16	0.59
2:F:47:ASN:O	2:F:51:ILE:HG12	2.02	0.58
2:D:146:PRO:O	2:D:150:ARG:HG3	2.03	0.58
1:E:106:PRO:HG2	4:E:319:HOH:O	2.02	0.58
1:E:6:SER:O	1:E:10:VAL:HG23	2.03	0.58
1:E:86:ARG:HD2	1:E:86:ARG:C	2.23	0.58
1:A:59:LEU:C	1:A:59:LEU:CD2	2.72	0.58
1:E:100:VAL:HG21	2:F:19:LEU:CD1	2.34	0.58
2:B:68:ARG:HD3	4:B:324:HOH:O	2.03	0.58
2:F:72:MEN:HE23	3:F:201:CYC:CMD	2.33	0.58
2:D:59:SER:HB3	2:D:60:LEU:HG	1.85	0.58
1:C:103:ASP:OD2	1:C:104:ILE:N	2.37	0.57
2:D:1:MET:HE1	2:D:106:ILE:HD12	1.85	0.57
1:C:3:SER:O	1:C:7:LYS:HG2	2.04	0.57
1:A:59:LEU:CD2	1:A:59:LEU:O	2.46	0.57
2:B:49:ALA:O	2:B:53:LYS:HG3	2.05	0.57
2:B:81:TYR:CD2	1:C:118:MET:HG3	2.39	0.57
2:D:126:ILE:O	2:D:130:VAL:HG23	2.04	0.57
2:F:72:MEN:HE21	2:F:124:VAL:CG2	2.20	0.57

Continued on next page...

Continued from previous page...

Atom-1	Atom-2	Interatomic distance (Å)	Clash overlap (Å)
2:D:1:MET:N	2:D:109:GLU:OE1	2.36	0.57
2:D:115:LEU:HD13	2:D:173:LEU:HD21	1.87	0.57
2:B:69:PRO:HA	2:B:76:TYR:CD1	2.40	0.56
1:C:5:VAL:O	1:C:9:ILE:HG13	2.06	0.56
1:A:67:VAL:HG12	1:A:67:VAL:O	2.03	0.56
1:A:98:GLY:O	1:A:102:GLY:N	2.38	0.56
1:E:40:ILE:HD11	1:E:148:ASP:CG	2.26	0.56
1:E:58:GLN:HB2	1:E:135:GLU:OE2	2.04	0.56
1:E:100:VAL:HG21	2:F:19:LEU:HD12	1.88	0.56
1:E:99:VAL:HG22	1:E:165:TYR:CD2	2.40	0.56
1:A:66:VAL:CG1	3:A:201:CYC:OC	2.54	0.55
1:C:166:PHE:O	1:C:170:ILE:HG12	2.05	0.55
1:A:112:ILE:HA	1:A:115:VAL:CG2	2.36	0.55
2:F:116:LYS:O	2:F:120:ASN:ND2	2.39	0.55
1:E:104:ILE:HD13	1:E:168:TYR:CG	2.42	0.55
1:E:28:LYS:O	1:E:31:VAL:HG22	2.06	0.55
2:B:72:MEN:HB2	4:B:329:HOH:O	2.05	0.55
2:D:106:ILE:HG23	2:D:107:LEU:N	2.22	0.55
1:A:20:SER:OG	1:A:23:GLU:HG3	2.07	0.55
2:F:72:MEN:CE2	3:F:201:CYC:HC	2.19	0.54
2:B:116:LYS:NZ	2:B:174:SER:O	2.32	0.54
2:D:116:LYS:NZ	2:D:174:SER:O	2.39	0.54
2:D:10:ASN:O	2:D:14:VAL:HG23	2.07	0.54
2:D:81:TYR:CD2	1:E:118:MET:HG3	2.42	0.54
1:E:15:GLU:HB2	1:E:17:ARG:HG2	1.90	0.54
2:F:60:LEU:HB3	2:F:75:MET:HE2	1.85	0.54
1:A:105:THR:HG22	4:A:327:HOH:O	2.08	0.54
1:E:104:ILE:HD13	1:E:168:TYR:CD1	2.43	0.53
1:C:86:ARG:HG2	1:C:86:ARG:O	2.08	0.53
1:E:88:LEU:HG	3:E:201:CYC:HBC1	1.90	0.53
2:D:25:ASP:HA	2:D:28:LYS:HD2	1.90	0.53
1:C:131:GLU:HA	1:C:134:ARG:NH1	2.23	0.53
1:A:131:GLU:HA	1:A:134:ARG:HB2	1.90	0.53
1:A:38:LEU:HD22	2:B:24:LEU:HD22	1.89	0.53
1:C:3:SER:O	1:C:7:LYS:CG	2.57	0.53
2:B:129:THR:HG22	3:B:201:CYC:HBC3	1.90	0.53
1:E:86:ARG:HD2	1:E:86:ARG:O	2.08	0.52
1:E:116:ARG:O	1:E:120:LYS:HB2	2.09	0.52
2:D:118:THR:HG22	2:D:118:THR:O	2.09	0.52
2:B:135:ALA:O	2:B:139:VAL:HG23	2.09	0.52
2:D:56:VAL:HG21	2:D:85:ILE:CD1	2.40	0.52

Continued on next page...

Continued from previous page...

Atom-1	Atom-2	Interatomic distance (Å)	Clash overlap (Å)
1:A:141:THR:HA	1:A:144:LEU:HD22	1.90	0.52
1:E:9:ILE:HB	2:F:1:MET:HE1	1.91	0.52
1:A:126:ILE:HG22	1:A:173:LEU:O	2.09	0.52
1:A:79:ASP:O	1:A:82:ALA:HB3	2.09	0.52
1:A:7:LYS:HE2	1:A:103:ASP:OD2	2.10	0.52
2:F:18:TYR:O	2:F:19:LEU:C	2.48	0.52
1:C:38:LEU:HD22	2:D:24:LEU:CD2	2.33	0.52
2:F:135:ALA:O	2:F:139:VAL:HG23	2.10	0.52
2:F:72:MEN:HE22	2:F:124:VAL:HA	1.93	0.51
1:A:6:SER:HA	2:B:1:MET:HE1	1.92	0.51
2:F:68:ARG:HB3	2:F:69:PRO:HD2	1.92	0.51
1:C:91:TYR:O	1:C:95:VAL:HG23	2.09	0.51
1:E:78:GLU:O	1:E:79:ASP:C	2.46	0.51
1:C:38:LEU:HB3	2:D:24:LEU:HD21	1.84	0.51
1:C:68:SER:HB2	1:C:69:PRO:HD2	1.91	0.51
1:A:67:VAL:HG22	1:A:81:THR:HG22	1.92	0.51
2:D:3:ASP:HB2	4:D:323:HOH:O	2.10	0.51
1:A:144:LEU:HB3	1:A:149:ALA:HB2	1.93	0.50
1:E:84:CYS:HA	3:E:201:CYC:CHD	2.41	0.50
1:E:58:GLN:HB3	1:E:135:GLU:OE2	2.11	0.50
2:D:130:VAL:O	2:D:134:GLN:HG3	2.11	0.50
1:A:4:ILE:CG2	1:A:30:PHE:CD2	2.95	0.50
2:F:66:ILE:CG2	2:F:75:MET:HG3	2.41	0.50
2:F:51:ILE:HD12	2:F:140:THR:CG2	2.42	0.50
2:D:129:THR:O	2:D:133:ILE:HG12	2.12	0.50
2:F:79:ARG:NH1	4:F:317:HOH:O	2.45	0.50
1:E:51:ILE:HD12	1:E:140:ALA:HA	1.94	0.50
2:D:125:PRO:O	2:D:129:THR:HG23	2.12	0.50
1:C:116:ARG:HH22	1:C:174:SER:C	2.14	0.50
1:E:128:ALA:O	1:E:131:GLU:HB2	2.11	0.50
2:F:64:SER:OG	2:F:66:ILE:HG13	2.11	0.50
2:F:72:MEN:CE2	2:F:124:VAL:HA	2.42	0.49
2:F:56:VAL:O	2:F:60:LEU:N	2.43	0.49
2:D:96:THR:HG22	2:D:162:MET:CE	2.42	0.49
2:F:60:LEU:HD11	3:F:201:CYC:HBC2	1.94	0.49
1:A:68:SER:HB3	1:A:69:PRO:HD3	1.92	0.49
2:D:144:VAL:HG13	2:D:148:ALA:HB3	1.94	0.49
2:B:129:THR:HG22	3:B:201:CYC:H3C	1.94	0.49
2:B:126:ILE:HD12	2:B:126:ILE:N	2.28	0.49
2:F:72:MEN:CE2	2:F:124:VAL:CB	2.90	0.49
2:F:173:LEU:O	2:F:174:SER:O	2.30	0.49

Continued on next page...

Continued from previous page...

Atom-1	Atom-2	Interatomic distance (Å)	Clash overlap (Å)
1:A:118:MET:HG3	2:F:81:TYR:CD2	2.48	0.49
1:A:28:LYS:O	1:A:32:VAL:HG23	2.13	0.49
1:C:104:ILE:CA	1:C:106:PRO:HD2	2.42	0.49
2:F:24:LEU:HD11	4:F:308:HOH:O	2.13	0.49
1:E:10:VAL:HG23	2:F:1:MET:HE3	1.95	0.48
2:B:61:LEU:HD13	4:C:325:HOH:O	2.13	0.48
2:F:14:VAL:O	2:F:14:VAL:HG12	2.13	0.48
1:A:166:PHE:O	1:A:170:ILE:HG13	2.13	0.48
2:D:51:ILE:HG21	2:D:140:THR:HG22	1.94	0.48
1:E:76:TYR:O	1:E:80:MET:CG	2.61	0.48
2:B:28:LYS:O	2:B:32:GLN:HG3	2.13	0.48
2:B:50:LEU:HD11	2:B:54:GLU:OE2	2.12	0.48
2:F:137:LYS:CE	2:F:163:GLY:CA	2.62	0.48
2:D:137:LYS:NZ	2:D:167:ASP:OD1	2.46	0.48
1:E:63:ARG:NH2	1:E:65:ASP:OD1	2.31	0.48
2:D:61:LEU:HD22	3:E:201:CYC:CAA	2.44	0.47
2:F:36:LEU:HD13	4:F:322:HOH:O	2.13	0.47
2:F:124:VAL:HA	2:F:125:PRO:HD3	1.76	0.47
2:F:171:SER:C	2:F:173:LEU:H	2.18	0.47
2:F:173:LEU:HD23	2:F:173:LEU:N	2.04	0.47
1:E:86:ARG:HD3	1:E:90:TYR:CZ	2.49	0.47
1:E:3:SER:HB3	4:F:306:HOH:O	2.14	0.47
2:D:127:GLY:O	2:D:131:GLN:HG3	2.14	0.47
1:C:126:ILE:O	1:C:129:VAL:N	2.46	0.47
1:C:129:VAL:HG12	1:C:173:LEU:HD13	1.95	0.47
2:F:61:LEU:HD23	2:F:61:LEU:HA	1.78	0.47
1:E:53:LYS:HG3	1:E:54:GLN:N	2.29	0.47
1:A:3:SER:N	1:A:6:SER:HG	2.12	0.47
2:F:72:MEN:HD2	3:F:201:CYC:C1C	2.27	0.47
1:A:31:VAL:HG11	2:B:34:GLY:HA3	1.96	0.47
3:B:201:CYC:CMD	3:B:201:CYC:HC	2.22	0.47
2:B:51:ILE:CG2	2:B:140:THR:HG22	2.43	0.47
2:F:119:TYR:HD2	2:F:126:ILE:HD13	1.79	0.47
1:A:47:SER:O	1:A:51:ILE:CG1	2.47	0.47
1:E:43:THR:HG21	1:E:144:LEU:HD23	1.97	0.47
1:E:32:VAL:HG12	1:E:32:VAL:O	2.15	0.47
2:D:50:LEU:C	2:D:50:LEU:HD23	2.35	0.47
2:F:72:MEN:ND2	2:F:125:PRO:HD3	2.29	0.46
1:E:32:VAL:O	1:E:32:VAL:CG1	2.61	0.46
1:A:3:SER:HA	1:A:103:ASP:HB2	1.98	0.46
1:C:106:PRO:O	1:C:110:ILE:HG12	2.15	0.46

Continued on next page...

Continued from previous page...

Atom-1	Atom-2	Interatomic distance (Å)	Clash overlap (Å)
1:C:48:ARG:HG2	1:C:49:GLU:N	2.30	0.46
2:B:26:ARG:HH11	2:B:26:ARG:HG3	1.79	0.46
1:E:104:ILE:HG21	1:E:168:TYR:CZ	2.50	0.46
2:D:66:ILE:CG2	2:D:75:MET:HB2	2.45	0.46
2:F:112:LEU:HD11	2:F:169:ILE:HA	1.97	0.46
1:A:112:ILE:HA	1:A:115:VAL:HG21	1.97	0.46
1:C:64:PRO:O	1:C:68:SER:HB3	2.16	0.46
1:A:80:MET:HG2	4:A:336:HOH:O	2.15	0.46
2:B:137:LYS:HG3	2:B:163:GLY:HA2	1.97	0.46
1:C:72:ASN:ND2	1:C:124:THR:OG1	2.49	0.46
1:A:23:GLU:O	1:A:27:ILE:HG13	2.16	0.46
1:C:87:ASP:O	1:C:90:TYR:HB2	2.16	0.45
1:C:72:ASN:ND2	3:C:201:CYC:NC	2.64	0.45
1:A:6:SER:HB3	2:B:3:ASP:OD1	2.17	0.45
1:E:133:VAL:HG12	1:E:170:ILE:HD11	1.99	0.45
1:A:4:ILE:HG21	1:A:30:PHE:CB	2.46	0.45
2:F:150:ARG:O	2:F:164:VAL:HG23	2.17	0.45
2:D:61:LEU:O	2:D:62:TYR:HB2	2.17	0.45
2:F:51:ILE:HD13	2:F:139:VAL:HG12	1.99	0.45
3:F:201:CYC:CMD	3:F:201:CYC:HC	2.27	0.45
1:E:28:LYS:HE3	2:F:38:VAL:HG11	1.99	0.45
2:F:173:LEU:C	2:F:174:SER:O	2.55	0.45
1:A:13:ASP:HA	2:B:97:TYR:OH	2.16	0.45
2:F:76:TYR:O	2:F:77:THR:HG23	2.17	0.45
2:F:72:MEN:HE22	2:F:124:VAL:CA	2.47	0.45
2:F:115:LEU:HD11	2:F:173:LEU:HD11	1.99	0.45
1:C:93:ARG:NE	4:C:328:HOH:O	2.50	0.44
1:A:106:PRO:O	1:A:110:ILE:HD12	2.17	0.44
1:E:125:PRO:HB2	4:E:316:HOH:O	2.16	0.44
2:D:56:VAL:HG21	2:D:85:ILE:HD11	1.99	0.44
1:C:126:ILE:HG22	1:C:173:LEU:O	2.16	0.44
1:E:3:SER:OG	1:E:4:ILE:N	2.49	0.44
1:A:39:ARG:O	1:A:43:THR:HG23	2.17	0.44
2:D:72:MEN:HE22	2:D:123:GLY:O	2.17	0.44
1:A:94:LEU:HD21	1:A:110:ILE:HG21	1.99	0.44
1:C:72:ASN:ND2	1:C:124:THR:HG23	2.33	0.44
1:A:42:GLN:HG3	2:B:24:LEU:HD11	2.00	0.44
2:B:5:ILE:HB	4:B:308:HOH:O	2.18	0.44
1:E:20:SER:OG	1:E:23:GLU:HG3	2.17	0.44
1:E:63:ARG:HE	1:E:63:ARG:HB3	1.66	0.44
2:F:67:THR:HA	2:F:75:MET:HB2	2.00	0.44

Continued on next page...

Continued from previous page...

Atom-1	Atom-2	Interatomic distance (Å)	Clash overlap (Å)
1:C:28:LYS:HG3	2:D:38:VAL:HG11	1.98	0.43
2:D:14:VAL:HG12	2:D:14:VAL:O	2.18	0.43
2:D:124:VAL:O	2:D:126:ILE:HD12	2.18	0.43
2:D:1:MET:CE	2:D:106:ILE:CD1	2.87	0.43
1:E:65:ASP:C	1:E:67:VAL:N	2.71	0.43
2:F:72:MEN:CE2	2:F:124:VAL:CG1	2.94	0.43
2:D:20:ASP:OD1	2:D:22:SER:N	2.50	0.43
2:B:68:ARG:O	2:B:69:PRO:C	2.55	0.43
1:A:78:GLU:O	1:A:79:ASP:C	2.57	0.43
2:F:21:SER:HB3	4:F:326:HOH:O	2.18	0.43
2:D:61:LEU:HD22	3:E:201:CYC:HBA1	2.01	0.43
2:B:126:ILE:O	2:B:130:VAL:HG23	2.19	0.43
2:B:68:ARG:HB3	2:B:68:ARG:HE	1.44	0.42
1:C:48:ARG:CG	1:C:49:GLU:N	2.82	0.42
2:B:166:LEU:HD23	2:B:166:LEU:HA	1.89	0.42
2:F:60:LEU:CB	2:F:75:MET:HE1	2.39	0.42
1:C:104:ILE:C	1:C:106:PRO:CD	2.74	0.42
1:C:84:CYS:HA	3:C:201:CYC:CHD	2.50	0.42
1:E:67:VAL:CG2	1:E:75:ALA:O	2.67	0.42
2:D:1:MET:N	2:D:109:GLU:CD	2.73	0.42
2:F:103:ASP:OD2	2:F:105:SER:HB3	2.20	0.42
2:F:67:THR:HG22	2:F:75:MET:HB3	2.01	0.42
2:F:51:ILE:HD12	2:F:140:THR:HA	2.02	0.42
2:F:72:MEN:HE22	2:F:124:VAL:CB	2.43	0.42
2:D:126:ILE:HD12	2:D:126:ILE:N	2.35	0.42
2:B:96:THR:O	2:B:96:THR:HG22	2.20	0.42
2:D:115:LEU:HD23	2:D:115:LEU:HA	1.79	0.42
1:A:72:ASN:HB3	3:A:201:CYC:OC	2.19	0.42
2:B:88:LEU:HD21	3:B:201:CYC:HBC1	2.02	0.42
1:E:63:ARG:HD3	4:E:306:HOH:O	2.18	0.42
2:F:20:ASP:HB2	4:F:313:HOH:O	2.19	0.42
2:B:115:LEU:HG	2:B:173:LEU:CD2	2.50	0.42
2:F:129:THR:O	2:F:133:ILE:HG13	2.20	0.41
1:A:67:VAL:CG2	1:A:81:THR:HG22	2.50	0.41
1:E:58:GLN:O	1:E:59:LEU:C	2.57	0.41
1:E:47:SER:O	1:E:48:ARG:C	2.58	0.41
1:C:112:ILE:O	1:C:115:VAL:HG12	2.20	0.41
2:F:129:THR:HG22	3:F:201:CYC:H3C	2.02	0.41
2:F:171:SER:C	2:F:173:LEU:N	2.73	0.41
2:D:72:MEN:CE2	2:D:123:GLY:O	2.68	0.41
1:C:8:SER:HB3	1:C:19:LEU:HD21	2.02	0.41

Continued on next page...

Continued from previous page...

Atom-1	Atom-2	Interatomic distance (Å)	Clash overlap (Å)
2:F:99:MET:HA	2:F:165:TYR:CE2	2.55	0.41
2:B:94:TYR:CD1	2:B:97:TYR:CD2	3.00	0.41
2:F:19:LEU:HD23	2:F:19:LEU:HA	1.74	0.41
2:F:28:LYS:O	2:F:32:GLN:HG3	2.21	0.41
2:B:115:LEU:CG	2:B:173:LEU:HD21	2.45	0.41
2:D:1:MET:HE1	2:D:106:ILE:HD13	2.01	0.41
1:C:44:ILE:CD1	1:C:140:ALA:HB1	2.51	0.41
1:E:75:ALA:HB1	1:E:81:THR:HA	2.03	0.41
1:C:28:LYS:HG2	2:D:35:GLU:HG2	2.01	0.41
2:B:71:GLY:O	2:B:76:TYR:HB3	2.20	0.41
1:C:116:ARG:NH2	1:C:174:SER:C	2.73	0.41
2:B:44:ILE:HG22	2:B:44:ILE:O	2.21	0.41
2:F:72:MEN:ND2	3:F:201:CYC:NC	2.69	0.41
2:B:115:LEU:CG	2:B:173:LEU:CD2	2.98	0.41
2:F:1:MET:HG3	2:F:106:ILE:HD12	2.03	0.41
2:B:57:ALA:HA	2:B:61:LEU:HB2	2.03	0.41
1:C:72:ASN:HD22	3:C:201:CYC:HC	1.66	0.41
1:C:94:LEU:HD21	1:C:110:ILE:HG21	2.03	0.41
4:C:328:HOH:O	2:D:16:GLY:HA2	2.19	0.41
2:B:69:PRO:HG3	2:B:76:TYR:CE1	2.56	0.41
1:C:116:ARG:NH2	1:C:174:SER:CA	2.82	0.41
1:C:116:ARG:NH2	1:C:174:SER:N	2.69	0.41
1:C:76:TYR:O	1:C:80:MET:HG3	2.21	0.41
2:F:66:ILE:HD13	2:F:66:ILE:HG23	1.81	0.40
2:D:1:MET:N	2:D:109:GLU:OE2	2.54	0.40
2:D:91:TYR:CD2	2:D:133:ILE:HD11	2.56	0.40
2:F:30:TYR:HD1	2:F:37:ARG:HH12	1.67	0.40
2:B:85:ILE:HG22	2:B:89:GLU:OE2	2.21	0.40
2:D:72:MEN:OD1	3:D:201:CYC:HMD2	2.22	0.40
1:E:45:ALA:O	1:E:48:ARG:HG3	2.21	0.40
1:C:66:VAL:O	1:C:66:VAL:HG13	2.21	0.40
1:E:20:SER:HB2	1:E:21:PRO:HD2	2.03	0.40
1:C:120:LYS:HB2	1:C:120:LYS:HE3	1.89	0.40
2:D:56:VAL:HG12	2:D:61:LEU:HG	2.03	0.40
3:D:201:CYC:CMD	3:D:201:CYC:HC	2.28	0.40
1:A:64:PRO:CD	1:A:65:ASP:H	2.25	0.40
1:A:64:PRO:CD	1:A:65:ASP:N	2.84	0.40

There are no symmetry-related clashes.

5.3 Torsion angles

5.3.1 Protein backbone

In the following table, the Percentiles column shows the percent Ramachandran outliers of the chain as a percentile score with respect to all X-ray entries followed by that with respect to entries of similar resolution.

The Analysed column shows the number of residues for which the backbone conformation was analysed, and the total number of residues.

Mol	Chain	Analysed	Favoured	Allowed	Outliers	Percentiles	
1	A	158/160 (99%)	154 (98%)	4 (2%)	0	100	100
1	C	158/160 (99%)	151 (96%)	6 (4%)	1 (1%)	30	50
1	E	158/160 (99%)	148 (94%)	10 (6%)	0	100	100
2	B	158/161 (98%)	153 (97%)	4 (2%)	1 (1%)	30	50
2	D	158/161 (98%)	148 (94%)	9 (6%)	1 (1%)	30	50
2	F	158/161 (98%)	151 (96%)	4 (2%)	3 (2%)	10	16
All	All	948/963 (98%)	905 (96%)	37 (4%)	6 (1%)	30	50

All (6) Ramachandran outliers are listed below:

Mol	Chain	Res	Type
2	B	62	TYR
2	D	77	THR
2	F	77	THR
2	F	62	TYR
2	F	126	ILE
1	C	106	PRO

5.3.2 Protein sidechains

In the following table, the Percentiles column shows the percent sidechain outliers of the chain as a percentile score with respect to all X-ray entries followed by that with respect to entries of similar resolution.

The Analysed column shows the number of residues for which the sidechain conformation was analysed, and the total number of residues.

Mol	Chain	Analysed	Rotameric	Outliers	Percentiles	
1	A	127/127 (100%)	121 (95%)	6 (5%)	32	56
1	C	127/127 (100%)	121 (95%)	6 (5%)	32	56

Continued on next page...

Continued from previous page...

Mol	Chain	Analysed	Rotameric	Outliers	Percentiles	
1	E	127/127 (100%)	122 (96%)	5 (4%)	39	66
2	B	127/127 (100%)	119 (94%)	8 (6%)	22	40
2	D	127/127 (100%)	121 (95%)	6 (5%)	32	56
2	F	127/127 (100%)	120 (94%)	7 (6%)	27	48
All	All	762/762 (100%)	724 (95%)	38 (5%)	30	53

All (38) residues with a non-rotameric sidechain are listed below:

Mol	Chain	Res	Type
1	A	19	LEU
1	A	31	VAL
1	A	51	ILE
1	A	63	ARG
1	A	79	ASP
1	A	117	GLU
2	B	2	GLN
2	B	58	LYS
2	B	68	ARG
2	B	69	PRO
2	B	118	THR
2	B	144	VAL
2	B	170	SER
2	B	174	SER
1	C	3	SER
1	C	19	LEU
1	C	66	VAL
1	C	117	GLU
1	C	131	GLU
1	C	143	LEU
2	D	59	SER
2	D	60	LEU
2	D	106	ILE
2	D	115	LEU
2	D	117	GLU
2	D	142	SER
1	E	3	SER
1	E	39	ARG
1	E	65	ASP
1	E	72	ASN
1	E	78	GLU
2	F	64	SER

Continued on next page...

Continued from previous page...

Mol	Chain	Res	Type
2	F	65	ASP
2	F	66	ILE
2	F	75	MET
2	F	106	ILE
2	F	147	ASP
2	F	173	LEU

Some sidechains can be flipped to improve hydrogen bonding and reduce clashes. All (11) such sidechains are listed below:

Mol	Chain	Res	Type
1	A	11	ASN
1	A	54	GLN
1	A	72	ASN
2	B	2	GLN
2	B	15	GLN
1	C	72	ASN
2	D	10	ASN
2	D	47	ASN
1	E	57	ASN
2	F	113	ASN
2	F	120	ASN

5.3.3 RNA ⓘ

There are no RNA molecules in this entry.

5.4 Non-standard residues in protein, DNA, RNA chains ⓘ

3 non-standard protein/DNA/RNA residues are modelled in this entry.

In the following table, the Counts columns list the number of bonds (or angles) for which Mogul statistics could be retrieved, the number of bonds (or angles) that are observed in the model and the number of bonds (or angles) that are defined in the chemical component dictionary. The Link column lists molecule types, if any, to which the group is linked. The Z score for a bond length (or angle) is the number of standard deviations the observed value is removed from the expected value. A bond length (or angle) with $|Z| > 2$ is considered an outlier worth inspection. RMSZ is the root-mean-square of all Z scores of the bond lengths (or angles).

Mol	Type	Chain	Res	Link	Bond lengths			Bond angles		
					Counts	RMSZ	$\# Z > 2$	Counts	RMSZ	$\# Z > 2$
2	MEN	B	72	2	7,8,9	0.75	0	5,9,11	0.77	0

Mol	Type	Chain	Res	Link	Bond lengths			Bond angles		
					Counts	RMSZ	# Z > 2	Counts	RMSZ	# Z > 2
2	MEN	D	72	2	7,8,9	0.68	0	5,9,11	1.09	1 (20%)
2	MEN	F	72	2	7,8,9	1.07	1 (14%)	5,9,11	0.86	0

In the following table, the Chirals column lists the number of chiral outliers, the number of chiral centers analysed, the number of these observed in the model and the number defined in the chemical component dictionary. Similar counts are reported in the Torsion and Rings columns. '-' means no outliers of that kind were identified.

Mol	Type	Chain	Res	Link	Chirals	Torsions	Rings
2	MEN	B	72	2	-	1/6/8/10	0/0/0/0
2	MEN	D	72	2	-	1/6/8/10	0/0/0/0
2	MEN	F	72	2	-	0/6/8/10	0/0/0/0

All (1) bond length outliers are listed below:

Mol	Chain	Res	Type	Atoms	Z	Observed(Å)	Ideal(Å)
2	F	72	MEN	CB-CG	2.12	1.55	1.51

All (1) bond angle outliers are listed below:

Mol	Chain	Res	Type	Atoms	Z	Observed(°)	Ideal(°)
2	D	72	MEN	O-C-CA	-2.15	119.89	125.49

There are no chirality outliers.

All (2) torsion outliers are listed below:

Mol	Chain	Res	Type	Atoms
2	B	72	MEN	CB-CG-ND2-CE2
2	D	72	MEN	CB-CG-ND2-CE2

There are no ring outliers.

3 monomers are involved in 26 short contacts:

Mol	Chain	Res	Type	Clashes	Symm-Clashes
2	B	72	MEN	1	0
2	D	72	MEN	3	0
2	F	72	MEN	22	0

5.5 Carbohydrates ⓘ

There are no carbohydrates in this entry.

5.6 Ligand geometry ⓘ

6 ligands are modelled in this entry.

In the following table, the Counts columns list the number of bonds (or angles) for which Mogul statistics could be retrieved, the number of bonds (or angles) that are observed in the model and the number of bonds (or angles) that are defined in the chemical component dictionary. The Link column lists molecule types, if any, to which the group is linked. The Z score for a bond length (or angle) is the number of standard deviations the observed value is removed from the expected value. A bond length (or angle) with $|Z| > 2$ is considered an outlier worth inspection. RMSZ is the root-mean-square of all Z scores of the bond lengths (or angles).

Mol	Type	Chain	Res	Link	Bond lengths			Bond angles		
					Counts	RMSZ	# Z > 2	Counts	RMSZ	# Z > 2
3	CYC	A	201	1	35,46,46	2.32	13 (37%)	47,67,67	4.09	20 (42%)
3	CYC	B	201	2	35,46,46	2.40	13 (37%)	47,67,67	4.03	16 (34%)
3	CYC	C	201	1	35,46,46	2.33	12 (34%)	47,67,67	3.92	18 (38%)
3	CYC	D	201	2	35,46,46	2.29	11 (31%)	47,67,67	4.07	17 (36%)
3	CYC	E	201	1	35,46,46	2.43	11 (31%)	47,67,67	4.07	20 (42%)
3	CYC	F	201	2	35,46,46	2.28	12 (34%)	47,67,67	4.05	16 (34%)

In the following table, the Chirals column lists the number of chiral outliers, the number of chiral centers analysed, the number of these observed in the model and the number defined in the chemical component dictionary. Similar counts are reported in the Torsion and Rings columns. '-' means no outliers of that kind were identified.

Mol	Type	Chain	Res	Link	Chirals	Torsions	Rings
3	CYC	A	201	1	-	2/21/74/74	0/4/4/4
3	CYC	B	201	2	-	2/21/74/74	0/4/4/4
3	CYC	C	201	1	-	2/21/74/74	0/4/4/4
3	CYC	D	201	2	-	2/21/74/74	0/4/4/4
3	CYC	E	201	1	-	2/21/74/74	0/4/4/4
3	CYC	F	201	2	-	2/21/74/74	0/4/4/4

All (72) bond length outliers are listed below:

Mol	Chain	Res	Type	Atoms	Z	Observed(Å)	Ideal(Å)
3	E	201	CYC	C1C-NC	-6.37	1.29	1.37

Continued on next page...

Continued from previous page...

Mol	Chain	Res	Type	Atoms	Z	Observed(Å)	Ideal(Å)
3	A	201	CYC	C1C-NC	-5.74	1.30	1.37
3	F	201	CYC	C1C-NC	-5.72	1.30	1.37
3	B	201	CYC	C1C-NC	-5.60	1.30	1.37
3	C	201	CYC	C1C-NC	-5.02	1.31	1.37
3	D	201	CYC	C1C-NC	-4.72	1.31	1.37
3	E	201	CYC	C1B-NB	-3.22	1.32	1.37
3	A	201	CYC	C4B-C3B	-3.02	1.41	1.48
3	A	201	CYC	C1B-NB	-2.94	1.32	1.37
3	E	201	CYC	C4B-C3B	-2.90	1.42	1.48
3	A	201	CYC	CMB-C2B	-2.85	1.44	1.50
3	B	201	CYC	CMB-C2B	-2.68	1.45	1.50
3	C	201	CYC	C4B-C3B	-2.67	1.42	1.48
3	B	201	CYC	C4B-C3B	-2.64	1.42	1.48
3	E	201	CYC	CMB-C2B	-2.61	1.45	1.50
3	F	201	CYC	CMB-C2B	-2.51	1.45	1.50
3	C	201	CYC	CMB-C2B	-2.50	1.45	1.50
3	A	201	CYC	C4B-NB	-2.48	1.32	1.37
3	C	201	CYC	C1B-NB	-2.41	1.33	1.37
3	F	201	CYC	C1B-NB	-2.41	1.33	1.37
3	F	201	CYC	C4B-NB	-2.32	1.32	1.37
3	F	201	CYC	C4B-C3B	-2.32	1.43	1.48
3	E	201	CYC	C4B-NB	-2.23	1.32	1.37
3	D	201	CYC	CMB-C2B	-2.21	1.46	1.50
3	D	201	CYC	C4B-NB	-2.08	1.33	1.37
3	B	201	CYC	C4B-NB	-2.07	1.33	1.37
3	B	201	CYC	C1B-NB	-2.00	1.34	1.37
3	B	201	CYC	C1D-CHD	2.13	1.48	1.40
3	C	201	CYC	C3B-C2B	2.20	1.41	1.36
3	A	201	CYC	C3B-C2B	2.21	1.41	1.36
3	A	201	CYC	C2C-C1C	2.22	1.54	1.52
3	C	201	CYC	C1D-CHD	2.25	1.48	1.40
3	E	201	CYC	C1D-CHD	2.26	1.48	1.40
3	A	201	CYC	C1D-CHD	2.28	1.49	1.40
3	F	201	CYC	C1D-CHD	2.29	1.49	1.40
3	D	201	CYC	C1D-CHD	2.37	1.49	1.40
3	F	201	CYC	C3B-C2B	2.61	1.42	1.36
3	B	201	CYC	C3B-C2B	2.71	1.42	1.36
3	D	201	CYC	C3B-C2B	2.92	1.43	1.36
3	C	201	CYC	CHA-C1A	2.95	1.37	1.35
3	F	201	CYC	C3D-C2D	3.22	1.47	1.37
3	E	201	CYC	CHB-C4A	3.26	1.48	1.40
3	A	201	CYC	CHB-C4A	3.26	1.48	1.40

Continued on next page...

Continued from previous page...

Mol	Chain	Res	Type	Atoms	Z	Observed(Å)	Ideal(Å)
3	B	201	CYC	CHB-C4A	3.33	1.48	1.40
3	E	201	CYC	C3D-C2D	3.33	1.47	1.37
3	D	201	CYC	CHB-C4A	3.33	1.48	1.40
3	F	201	CYC	CHB-C4A	3.37	1.48	1.40
3	A	201	CYC	C3D-C2D	3.37	1.47	1.37
3	C	201	CYC	C3D-C2D	3.38	1.47	1.37
3	C	201	CYC	C2A-C3A	3.47	1.44	1.36
3	B	201	CYC	C3D-C2D	3.51	1.48	1.37
3	B	201	CYC	C2A-C3A	3.55	1.44	1.36
3	D	201	CYC	CHA-C1A	3.55	1.38	1.35
3	D	201	CYC	C3D-C2D	3.57	1.48	1.37
3	E	201	CYC	C2A-C3A	3.60	1.44	1.36
3	A	201	CYC	C2A-C3A	3.65	1.44	1.36
3	D	201	CYC	C2A-C3A	3.78	1.44	1.36
3	C	201	CYC	CHB-C4A	3.81	1.49	1.40
3	F	201	CYC	C2A-C3A	3.85	1.45	1.36
3	B	201	CYC	CHA-C1A	3.91	1.38	1.35
3	F	201	CYC	OC-C1C	3.99	1.31	1.23
3	D	201	CYC	OC-C1C	4.26	1.31	1.23
3	B	201	CYC	OC-C1C	4.31	1.31	1.23
3	A	201	CYC	OC-C1C	4.31	1.31	1.23
3	E	201	CYC	OC-C1C	4.46	1.32	1.23
3	C	201	CYC	OC-C1C	4.69	1.32	1.23
3	A	201	CYC	OB-C4B	6.10	1.35	1.23
3	D	201	CYC	OB-C4B	6.65	1.36	1.23
3	F	201	CYC	OB-C4B	6.67	1.36	1.23
3	C	201	CYC	OB-C4B	6.85	1.36	1.23
3	B	201	CYC	OB-C4B	6.88	1.36	1.23
3	E	201	CYC	OB-C4B	7.12	1.37	1.23

All (107) bond angle outliers are listed below:

Mol	Chain	Res	Type	Atoms	Z	Observed(°)	Ideal(°)
3	A	201	CYC	C4B-C3B-C2B	-14.64	99.69	108.05
3	D	201	CYC	C4B-C3B-C2B	-14.50	99.77	108.05
3	B	201	CYC	C4B-C3B-C2B	-14.40	99.83	108.05
3	F	201	CYC	C4B-C3B-C2B	-14.36	99.85	108.05
3	E	201	CYC	C4B-C3B-C2B	-14.34	99.87	108.05
3	C	201	CYC	C4B-C3B-C2B	-13.46	100.37	108.05
3	F	201	CYC	OC-C1C-C2C	-10.79	117.53	126.25
3	D	201	CYC	OC-C1C-C2C	-10.66	117.64	126.25
3	B	201	CYC	OC-C1C-C2C	-10.64	117.65	126.25

Continued on next page...

Continued from previous page...

Mol	Chain	Res	Type	Atoms	Z	Observed(°)	Ideal(°)
3	C	201	CYC	OC-C1C-C2C	-10.57	117.71	126.25
3	A	201	CYC	OC-C1C-C2C	-10.08	118.11	126.25
3	E	201	CYC	OC-C1C-C2C	-9.94	118.22	126.25
3	B	201	CYC	OB-C4B-C3B	-7.71	118.84	128.09
3	E	201	CYC	OB-C4B-C3B	-7.45	119.15	128.09
3	A	201	CYC	OB-C4B-C3B	-7.40	119.22	128.09
3	C	201	CYC	OB-C4B-C3B	-7.20	119.46	128.09
3	F	201	CYC	OB-C4B-C3B	-7.14	119.53	128.09
3	D	201	CYC	OB-C4B-C3B	-6.88	119.84	128.09
3	A	201	CYC	C1B-NB-C4B	-4.35	104.36	110.73
3	E	201	CYC	C1B-NB-C4B	-4.32	104.41	110.73
3	B	201	CYC	C1B-NB-C4B	-4.14	104.67	110.73
3	F	201	CYC	C1B-NB-C4B	-4.03	104.84	110.73
3	C	201	CYC	C1B-NB-C4B	-3.98	104.90	110.73
3	D	201	CYC	C1B-NB-C4B	-3.95	104.95	110.73
3	E	201	CYC	C1A-C2A-C3A	-3.73	102.65	106.81
3	F	201	CYC	C3C-C2C-C1C	-3.66	100.34	103.41
3	E	201	CYC	CAA-CBA-CGA	-3.53	106.27	112.75
3	F	201	CYC	C1A-C2A-C3A	-3.49	102.91	106.81
3	A	201	CYC	C3C-C2C-C1C	-3.48	100.49	103.41
3	D	201	CYC	C3C-C2C-C1C	-3.47	100.50	103.41
3	A	201	CYC	C1A-C2A-C3A	-3.37	103.05	106.81
3	C	201	CYC	C3C-C2C-C1C	-3.31	100.64	103.41
3	E	201	CYC	C3C-C2C-C1C	-3.25	100.69	103.41
3	B	201	CYC	C3C-C2C-C1C	-3.25	100.69	103.41
3	A	201	CYC	CAA-CBA-CGA	-3.21	106.87	112.75
3	D	201	CYC	C1A-C2A-C3A	-3.17	103.27	106.81
3	B	201	CYC	C1A-C2A-C3A	-3.13	103.32	106.81
3	B	201	CYC	CAA-CBA-CGA	-3.08	107.10	112.75
3	D	201	CYC	CAA-CBA-CGA	-3.08	107.10	112.75
3	A	201	CYC	CHB-C4A-NA	-2.83	119.53	124.91
3	F	201	CYC	CAA-CBA-CGA	-2.81	107.59	112.75
3	C	201	CYC	C1A-C2A-C3A	-2.81	103.68	106.81
3	E	201	CYC	CHB-C4A-NA	-2.73	119.70	124.91
3	C	201	CYC	CHB-C4A-NA	-2.25	120.62	124.91
3	D	201	CYC	CHB-C1B-NB	-2.14	121.53	126.16
3	E	201	CYC	C3A-C4A-NA	-2.13	105.70	110.55
3	C	201	CYC	C3A-C4A-NA	-2.11	105.75	110.55
3	F	201	CYC	CAB-C3B-C2B	2.01	131.03	127.51
3	A	201	CYC	CMA-C3A-C4A	2.01	128.32	125.06
3	A	201	CYC	CAC-C3C-C4C	2.04	117.90	112.67
3	C	201	CYC	CAA-C2A-C1A	2.05	128.73	125.06

Continued on next page...

Continued from previous page...

Mol	Chain	Res	Type	Atoms	Z	Observed(°)	Ideal(°)
3	C	201	CYC	CMA-C3A-C4A	2.07	128.43	125.06
3	A	201	CYC	C4A-C3A-C2A	2.09	109.01	106.50
3	E	201	CYC	CMA-C3A-C4A	2.12	128.51	125.06
3	E	201	CYC	CAA-C2A-C1A	2.15	128.90	125.06
3	C	201	CYC	C2B-C1B-NB	2.15	110.11	107.00
3	B	201	CYC	C2B-C1B-NB	2.19	110.18	107.00
3	D	201	CYC	CHB-C4A-C3A	2.21	130.27	124.88
3	E	201	CYC	CAB-C3B-C2B	2.32	131.57	127.51
3	B	201	CYC	C4A-C3A-C2A	2.33	109.30	106.50
3	F	201	CYC	C4A-C3A-C2A	2.38	109.35	106.50
3	E	201	CYC	C4A-C3A-C2A	2.38	109.36	106.50
3	A	201	CYC	CAB-C3B-C2B	2.41	131.74	127.51
3	F	201	CYC	C1A-NA-C4A	2.41	111.28	106.51
3	D	201	CYC	C4A-C3A-C2A	2.44	109.43	106.50
3	D	201	CYC	C2B-C1B-NB	2.46	110.57	107.00
3	F	201	CYC	C2B-C1B-NB	2.49	110.61	107.00
3	C	201	CYC	C4A-C3A-C2A	2.54	109.55	106.50
3	D	201	CYC	C1A-NA-C4A	2.55	111.55	106.51
3	E	201	CYC	C2B-C1B-NB	2.56	110.71	107.00
3	F	201	CYC	CHB-C4A-C3A	2.58	131.17	124.88
3	A	201	CYC	C2B-C1B-NB	2.67	110.87	107.00
3	A	201	CYC	CBD-CAD-C3D	2.69	117.36	112.53
3	B	201	CYC	C1A-NA-C4A	2.73	111.91	106.51
3	B	201	CYC	CAB-C3B-C2B	2.78	132.38	127.51
3	B	201	CYC	CHB-C4A-C3A	2.90	131.96	124.88
3	C	201	CYC	C1A-NA-C4A	2.93	112.31	106.51
3	A	201	CYC	C1A-NA-C4A	2.97	112.39	106.51
3	E	201	CYC	C1A-NA-C4A	3.03	112.50	106.51
3	D	201	CYC	CBD-CAD-C3D	3.41	118.64	112.53
3	C	201	CYC	CHB-C4A-C3A	3.58	133.62	124.88
3	D	201	CYC	C3C-C4C-NC	3.64	111.57	107.93
3	F	201	CYC	C3C-C4C-NC	3.77	111.70	107.93
3	C	201	CYC	C3C-C4C-NC	3.79	111.73	107.93
3	A	201	CYC	CHB-C4A-C3A	3.85	134.28	124.88
3	A	201	CYC	C3C-C4C-NC	3.87	111.81	107.93
3	B	201	CYC	C3C-C4C-NC	3.92	111.86	107.93
3	E	201	CYC	CHB-C4A-C3A	3.97	134.57	124.88
3	E	201	CYC	C3C-C4C-NC	4.20	112.14	107.93
3	B	201	CYC	CAB-C3B-C4B	7.20	127.80	121.51
3	C	201	CYC	C2C-C1C-NC	7.47	115.44	108.30
3	B	201	CYC	C2C-C1C-NC	7.81	115.77	108.30
3	D	201	CYC	C2C-C1C-NC	7.82	115.77	108.30

Continued on next page...

Continued from previous page...

Mol	Chain	Res	Type	Atoms	Z	Observed(°)	Ideal(°)
3	A	201	CYC	C2C-C1C-NC	7.89	115.83	108.30
3	E	201	CYC	C2C-C1C-NC	7.94	115.88	108.30
3	E	201	CYC	CAB-C3B-C4B	8.07	128.56	121.51
3	A	201	CYC	CAB-C3B-C4B	8.08	128.57	121.51
3	F	201	CYC	C2C-C1C-NC	8.26	116.19	108.30
3	C	201	CYC	CAB-C3B-C4B	8.46	128.90	121.51
3	F	201	CYC	CAB-C3B-C4B	8.72	129.12	121.51
3	D	201	CYC	CAB-C3B-C4B	9.58	129.88	121.51
3	C	201	CYC	C3B-C4B-NB	10.88	116.63	106.74
3	D	201	CYC	C3B-C4B-NB	11.14	116.87	106.74
3	F	201	CYC	C3B-C4B-NB	11.16	116.89	106.74
3	A	201	CYC	C3B-C4B-NB	11.43	117.13	106.74
3	E	201	CYC	C3B-C4B-NB	11.44	117.14	106.74
3	B	201	CYC	C3B-C4B-NB	11.58	117.27	106.74

There are no chirality outliers.

All (12) torsion outliers are listed below:

Mol	Chain	Res	Type	Atoms
3	D	201	CYC	C1B-CHB-C4A-C3A
3	B	201	CYC	C1B-CHB-C4A-C3A
3	F	201	CYC	C1B-CHB-C4A-C3A
3	D	201	CYC	C1B-CHB-C4A-NA
3	B	201	CYC	C1B-CHB-C4A-NA
3	F	201	CYC	C1B-CHB-C4A-NA
3	A	201	CYC	C1B-CHB-C4A-C3A
3	C	201	CYC	C1B-CHB-C4A-C3A
3	A	201	CYC	C1B-CHB-C4A-NA
3	E	201	CYC	C1B-CHB-C4A-C3A
3	C	201	CYC	C1B-CHB-C4A-NA
3	E	201	CYC	C1B-CHB-C4A-NA

There are no ring outliers.

6 monomers are involved in 40 short contacts:

Mol	Chain	Res	Type	Clashes	Symm-Clashes
3	A	201	CYC	6	0
3	B	201	CYC	5	0
3	C	201	CYC	8	0
3	D	201	CYC	4	0
3	E	201	CYC	7	0

Continued on next page...

Continued from previous page...

Mol	Chain	Res	Type	Clashes	Symm-Clashes
3	F	201	CYC	10	0

5.7 Other polymers [i](#)

There are no such residues in this entry.

5.8 Polymer linkage issues [i](#)

There are no chain breaks in this entry.

6 Fit of model and data ⓘ

6.1 Protein, DNA and RNA chains ⓘ

In the following table, the column labelled ‘#RSRZ> 2’ contains the number (and percentage) of RSRZ outliers, followed by percent RSRZ outliers for the chain as percentile scores relative to all X-ray entries and entries of similar resolution. The OWAB column contains the minimum, median, 95th percentile and maximum values of the occupancy-weighted average B-factor per residue. The column labelled ‘Q< 0.9’ lists the number of (and percentage) of residues with an average occupancy less than 0.9.

Mol	Chain	Analysed	<RSRZ>	#RSRZ>2	OWAB(Å ²)	Q<0.9
1	A	160/160 (100%)	-0.04	3 (1%) 70 73	30, 48, 87, 97	0
1	C	160/160 (100%)	-0.01	1 (0%) 90 91	32, 44, 68, 74	0
1	E	160/160 (100%)	-0.05	1 (0%) 90 91	33, 48, 71, 79	0
2	B	160/161 (99%)	-0.16	3 (1%) 70 73	29, 41, 60, 78	0
2	D	160/161 (99%)	-0.05	1 (0%) 90 91	29, 47, 62, 66	0
2	F	160/161 (99%)	0.20	9 (5%) 28 31	31, 55, 82, 90	0
All	All	960/963 (99%)	-0.02	18 (1%) 70 73	29, 47, 74, 97	0

All (18) RSRZ outliers are listed below:

Mol	Chain	Res	Type	RSRZ
2	F	62	TYR	5.2
2	F	60	LEU	5.0
2	F	174	SER	3.8
2	B	173	LEU	3.1
2	F	145	GLY	3.0
2	D	174	SER	2.8
2	F	146	PRO	2.8
2	B	174	SER	2.6
2	F	122	LEU	2.5
1	A	78	GLU	2.5
1	E	145	THR	2.5
1	A	76	TYR	2.5
2	F	91	TYR	2.3
1	C	64	PRO	2.2
2	F	79	ARG	2.2
2	B	68	ARG	2.2
1	A	60	PHE	2.2
2	F	144	VAL	2.1

6.2 Non-standard residues in protein, DNA, RNA chains [i](#)

In the following table, the Atoms column lists the number of modelled atoms in the group and the number defined in the chemical component dictionary. LLDF column lists the quality of electron density of the group with respect to its neighbouring residues in protein, DNA or RNA chains. The B-factors column lists the minimum, median, 95th percentile and maximum values of B factors of atoms in the group. The column labelled 'Q< 0.9' lists the number of atoms with occupancy less than 0.9.

Mol	Type	Chain	Res	Atoms	RSCC	RSR	LLDF	B-factors(Å ²)	Q<0.9
2	MEN	B	72	9/10	0.91	0.20	-	46,50,54,56	0
2	MEN	D	72	9/10	0.92	0.20	-	48,51,59,60	0
2	MEN	F	72	9/10	0.88	0.18	-	55,59,62,66	0

6.3 Carbohydrates [i](#)

There are no carbohydrates in this entry.

6.4 Ligands [i](#)

In the following table, the Atoms column lists the number of modelled atoms in the group and the number defined in the chemical component dictionary. LLDF column lists the quality of electron density of the group with respect to its neighbouring residues in protein, DNA or RNA chains. The B-factors column lists the minimum, median, 95th percentile and maximum values of B factors of atoms in the group. The column labelled 'Q< 0.9' lists the number of atoms with occupancy less than 0.9.

Mol	Type	Chain	Res	Atoms	RSCC	RSR	LLDF	B-factors(Å ²)	Q<0.9
3	CYC	D	201	43/43	0.92	0.18	0.68	40,48,54,58	0
3	CYC	F	201	43/43	0.90	0.22	0.29	48,61,65,66	0
3	CYC	B	201	43/43	0.94	0.16	0.28	33,49,56,60	0
3	CYC	A	201	43/43	0.94	0.17	0.27	38,48,63,68	0
3	CYC	E	201	43/43	0.96	0.15	0.17	29,41,52,58	0
3	CYC	C	201	43/43	0.96	0.14	-0.39	34,39,52,59	0

6.5 Other polymers [i](#)

There are no such residues in this entry.