



Full wwPDB X-ray Structure Validation Report ⓘ

Feb 1, 2016 – 01:58 AM GMT

PDB ID : 2F38
Title : Crystal structure of prostaglandin F synthase containing bimatoprost
Authors : Komoto, J.; Yamada, T.; Watanabe, K.; Woodward, D.F.; Takusagawa, F.
Deposited on : 2005-11-18
Resolution : 2.00 Å(reported)

This is a Full wwPDB X-ray Structure Validation Report for a publicly released PDB entry.
We welcome your comments at validation@mail.wwpdb.org
A user guide is available at
<http://wwpdb.org/validation/2016/XrayValidationReportHelp>
with specific help available everywhere you see the ⓘ symbol.

The following versions of software and data (see [references ⓘ](#)) were used in the production of this report:

MolProbity : 4.02b-467
Mogul : 1.7 (RC4), CSD as536be (2015)
Xtriage (Phenix) : 1.9-1692
EDS : rb-20026688
Percentile statistics : 20151230.v01 (using entries in the PDB archive December 30th 2015)
Refmac : 5.8.0135
CCP4 : 6.5.0
Ideal geometry (proteins) : Engh & Huber (2001)
Ideal geometry (DNA, RNA) : Parkinson et al. (1996)
Validation Pipeline (wwPDB-VP) : trunk26865

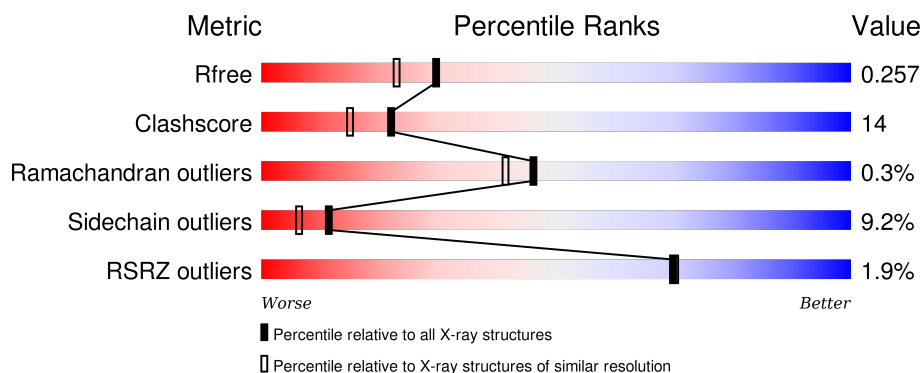
1 Overall quality at a glance

The following experimental techniques were used to determine the structure:

X-RAY DIFFRACTION

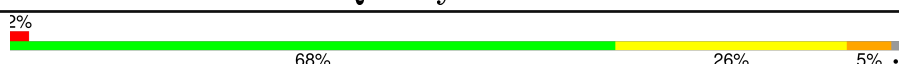
The reported resolution of this entry is 2.00 Å.

Percentile scores (ranging between 0-100) for global validation metrics of the entry are shown in the following graphic. The table shows the number of entries on which the scores are based.



Metric	Whole archive (#Entries)	Similar resolution (#Entries, resolution range(Å))
R_{free}	91344	6249 (2.00-2.00)
Clashscore	102246	7340 (2.00-2.00)
Ramachandran outliers	100387	7248 (2.00-2.00)
Sidechain outliers	100360	7247 (2.00-2.00)
RSRZ outliers	91569	6262 (2.00-2.00)

The table below summarises the geometric issues observed across the polymeric chains and their fit to the electron density. The red, orange, yellow and green segments on the lower bar indicate the fraction of residues that contain outliers for ≥ 3 , 2, 1 and 0 types of geometric quality criteria. A grey segment represents the fraction of residues that are not modelled. The numeric value for each fraction is indicated below the corresponding segment, with a dot representing fractions $\leq 5\%$. The upper red bar (where present) indicates the fraction of residues that have poor fit to the electron density. The numeric value is given above the bar.

Mol	Chain	Length	Quality of chain
1	A	323	

2 Entry composition [i](#)

There are 4 unique types of molecules in this entry. The entry contains 2756 atoms, of which 0 are hydrogens and 0 are deuteriums.

In the tables below, the ZeroOcc column contains the number of atoms modelled with zero occupancy, the AltConf column contains the number of residues with at least one atom in alternate conformation and the Trace column contains the number of residues modelled with at most 2 atoms.

- Molecule 1 is a protein called Aldo-keto reductase family 1 member C3.

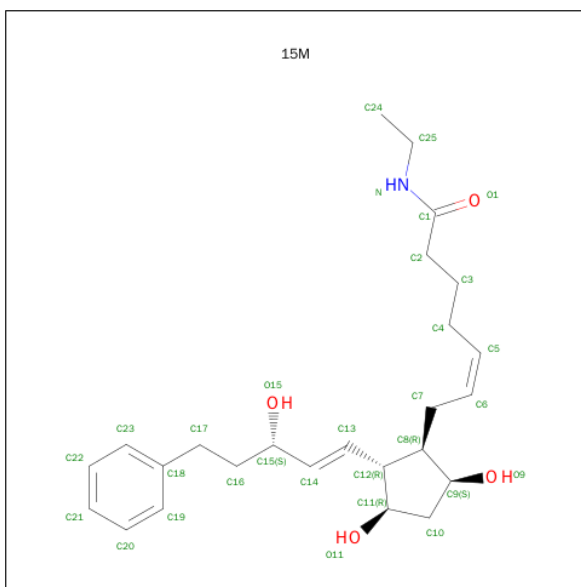
Mol	Chain	Residues	Atoms					ZeroOcc	AltConf	Trace
			Total	C	N	O	S			
1	A	319	2563	1632	445	474	12	0	0	0

- Molecule 2 is NADP NICOTINAMIDE-ADENINE-DINUCLEOTIDE PHOSPHATE (three-letter code: NAP) (formula: C₂₁H₂₈N₇O₁₇P₃).



Mol	Chain	Residues	Atoms					ZeroOcc	AltConf
			Total	C	N	O	P		
2	A	1	48	21	7	17	3	0	0

- Molecule 3 is (5Z)-7-[(1R,2R,3R,5S)-3,5-DIHYDROXY-2-[(1E,3S)-3-HYDROXY-5-PHENYLPENT-1-ENYL]CYCLOPENTYL]-N-ETHYLHEPT-5-ENAMIDE (three-letter code: 15M) (formula: C₂₅H₃₇NO₄).



Mol	Chain	Residues	Atoms				ZeroOcc	AltConf
3	A	1	Total	C	N	O	0	0
			30	25	1	4		

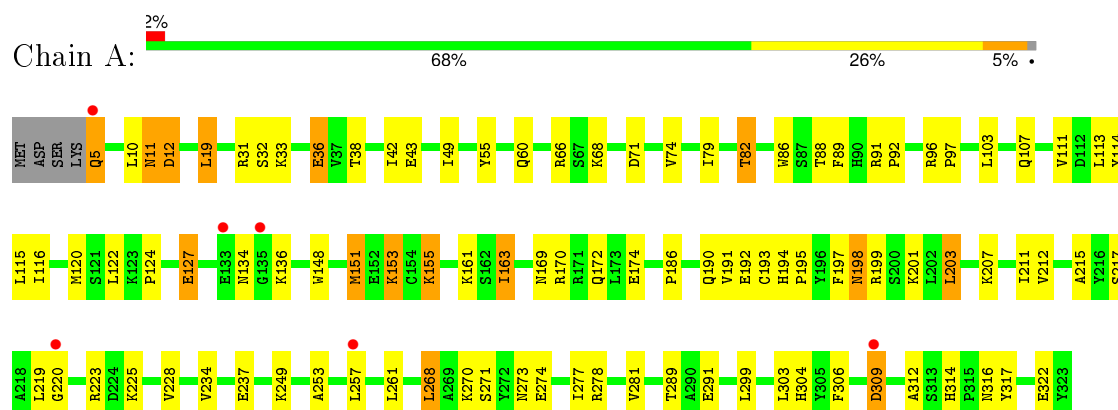
- Molecule 4 is water.

Mol	Chain	Residues	Atoms		ZeroOcc	AltConf
4	A	115	Total	O	0	0
			115	115		

3 Residue-property plots

These plots are drawn for all protein, RNA and DNA chains in the entry. The first graphic for a chain summarises the proportions of errors displayed in the second graphic. The second graphic shows the sequence view annotated by issues in geometry and electron density. Residues are color-coded according to the number of geometric quality criteria for which they contain at least one outlier: green = 0, yellow = 1, orange = 2 and red = 3 or more. A red dot above a residue indicates a poor fit to the electron density ($RSRZ > 2$). Stretches of 2 or more consecutive residues without any outlier are shown as a green connector. Residues present in the sample, but not in the model, are shown in grey.

- Molecule 1: Aldo-keto reductase family 1 member C3



4 Data and refinement statistics

Property	Value	Source
Space group	P 1 21 1	Depositor
Cell constants a, b, c, α , β , γ	44.27Å 78.16Å 48.89Å 90.00° 100.20° 90.00°	Depositor
Resolution (Å)	20.00 – 2.00 21.31 – 2.00	Depositor EDS
% Data completeness (in resolution range)	(Not available) (20.00-2.00) 88.8 (21.31-2.00)	Depositor EDS
R_{merge}	(Not available)	Depositor
R_{sym}	(Not available)	Depositor
$\langle I/\sigma(I) \rangle$ ¹	11.08 (at 2.01Å)	Xtriage
Refinement program	X-PLOR 98.1	Depositor
R, R_{free}	0.220 , 0.281 0.202 , 0.257	Depositor DCC
R_{free} test set	1938 reflections (9.84%)	DCC
Wilson B-factor (Å ²)	10.9	Xtriage
Anisotropy	0.205	Xtriage
Bulk solvent k_{sol} (e/Å ³), B_{sol} (Å ²)	0.41 , 48.3	EDS
Estimated twinning fraction	No twinning to report.	Xtriage
L-test for twinning ²	$\langle L \rangle = 0.49$, $\langle L^2 \rangle = 0.32$	Xtriage
Outliers	0 of 19693 reflections	Xtriage
F_o, F_c correlation	0.91	EDS
Total number of atoms	2756	wwPDB-VP
Average B, all atoms (Å ²)	7.0	wwPDB-VP

Xtriage's analysis on translational NCS is as follows: *The largest off-origin peak in the Patterson function is 7.84% of the height of the origin peak. No significant pseudotranslation is detected.*

¹Intensities estimated from amplitudes.

²Theoretical values of $\langle |L| \rangle$, $\langle L^2 \rangle$ for acentric reflections are 0.5, 0.375 respectively for untwinned datasets, and 0.333, 0.2 for perfectly twinned datasets.

5 Model quality [i](#)

5.1 Standard geometry [i](#)

Bond lengths and bond angles in the following residue types are not validated in this section: NAP, 15M

The Z score for a bond length (or angle) is the number of standard deviations the observed value is removed from the expected value. A bond length (or angle) with $|Z| > 5$ is considered an outlier worth inspection. RMSZ is the root-mean-square of all Z scores of the bond lengths (or angles).

Mol	Chain	Bond lengths		Bond angles	
		RMSZ	$\# Z > 5$	RMSZ	$\# Z > 5$
1	A	0.39	0/2622	0.62	1/3547 (0.0%)

There are no bond length outliers.

All (1) bond angle outliers are listed below:

Mol	Chain	Res	Type	Atoms	Z	Observed(°)	Ideal(°)
1	A	116	ILE	N-CA-C	-5.43	96.34	111.00

There are no chirality outliers.

There are no planarity outliers.

5.2 Too-close contacts [i](#)

In the following table, the Non-H and H(model) columns list the number of non-hydrogen atoms and hydrogen atoms in the chain respectively. The H(added) column lists the number of hydrogen atoms added and optimized by MolProbity. The Clashes column lists the number of clashes within the asymmetric unit, whereas Symm-Clashes lists symmetry related clashes.

Mol	Chain	Non-H	H(model)	H(added)	Clashes	Symm-Clashes
1	A	2563	0	2558	73	0
2	A	48	0	25	6	0
3	A	30	0	37	1	0
4	A	115	0	0	2	0
All	All	2756	0	2620	73	0

The all-atom clashscore is defined as the number of clashes found per 1000 atoms (including hydrogen atoms). The all-atom clashscore for this structure is 14.

All (73) close contacts within the same asymmetric unit are listed below, sorted by their clash

magnitude.

Atom-1	Atom-2	Interatomic distance (Å)	Clash overlap (Å)
1:A:223:ARG:HA	1:A:228:VAL:HG11	1.23	1.14
1:A:219:LEU:HB2	2:A:324:NAP:H52A	1.53	0.90
1:A:151:MET:HE3	1:A:151:MET:HA	1.60	0.83
1:A:223:ARG:CA	1:A:228:VAL:HG11	2.09	0.80
1:A:134:ASN:HB2	1:A:136:LYS:HE2	1.65	0.78
1:A:274:GLU:O	1:A:278:ARG:HG3	1.87	0.75
1:A:273:ASN:O	1:A:277:ILE:HG12	1.87	0.75
1:A:186:PRO:O	1:A:211:ILE:HD12	1.86	0.75
1:A:271:SER:O	1:A:277:ILE:HD11	1.89	0.72
1:A:198:ASN:HD22	1:A:198:ASN:C	1.99	0.66
1:A:96:ARG:HD2	1:A:153:LYS:HE2	1.78	0.65
1:A:86:TRP:CD1	1:A:88:THR:HG22	2.32	0.65
1:A:201:LYS:HE3	1:A:322:GLU:OE1	1.99	0.62
1:A:151:MET:HA	1:A:151:MET:CE	2.30	0.62
1:A:190:GLN:NE2	2:A:324:NAP:H2N	2.15	0.61
1:A:169:ASN:H	1:A:172:GLN:HE21	1.48	0.61
1:A:86:TRP:HD1	1:A:88:THR:HG22	1.65	0.61
1:A:82:THR:HB	1:A:113:LEU:HB3	1.81	0.61
1:A:113:LEU:HD21	1:A:115:LEU:HD21	1.82	0.60
1:A:10:LEU:C	1:A:12:ASP:H	2.04	0.60
1:A:134:ASN:CB	1:A:136:LYS:HE2	2.31	0.58
1:A:191:VAL:HB	1:A:199:ARG:NH1	2.19	0.58
1:A:219:LEU:HB2	2:A:324:NAP:C5B	2.32	0.58
1:A:197:PHE:HB2	1:A:303:LEU:O	2.05	0.56
1:A:155:LYS:HE3	1:A:161:LYS:O	2.06	0.55
1:A:270:LYS:HD3	1:A:270:LYS:C	2.27	0.55
1:A:203:LEU:HD22	1:A:207:LYS:HD2	1.90	0.54
1:A:5:GLN:HE22	1:A:19:LEU:H	1.55	0.54
1:A:11:ASN:C	1:A:11:ASN:HD22	2.11	0.54
1:A:43:GLU:HG3	1:A:68:LYS:HE2	1.91	0.52
1:A:88:THR:HG23	1:A:89:PHE:CD1	2.44	0.52
1:A:148:TRP:CH2	1:A:163:ILE:HG12	2.45	0.52
1:A:304:HIS:HD2	1:A:306:PHE:O	1.93	0.51
1:A:271:SER:HB3	1:A:277:ILE:HD13	1.92	0.51
1:A:219:LEU:HD21	1:A:257:LEU:HD21	1.93	0.51
1:A:82:THR:HG21	4:A:1028:HOH:O	2.11	0.50
1:A:289:THR:OG1	1:A:291:GLU:HG2	2.12	0.50
1:A:42:ILE:HD11	1:A:49:ILE:HD11	1.94	0.49
1:A:38:THR:O	1:A:42:ILE:HG12	2.12	0.49
1:A:88:THR:HG23	1:A:89:PHE:CE1	2.47	0.49
1:A:88:THR:HG21	4:A:1042:HOH:O	2.13	0.48

Continued on next page...

Continued from previous page...

Atom-1	Atom-2	Interatomic distance (Å)	Clash overlap (Å)
1:A:33:LYS:HA	1:A:36:GLU:HG3	1.96	0.47
1:A:74:VAL:HG21	1:A:79:ILE:HD13	1.95	0.47
1:A:74:VAL:HG21	1:A:79:ILE:CD1	2.44	0.47
1:A:234:VAL:HB	1:A:237:GLU:HB2	1.96	0.47
1:A:170:ARG:O	1:A:174:GLU:HG3	2.15	0.47
1:A:96:ARG:HB3	1:A:97:PRO:HD3	1.97	0.47
1:A:96:ARG:N	1:A:97:PRO:CD	2.78	0.46
1:A:10:LEU:C	1:A:12:ASP:N	2.66	0.46
1:A:114:TYR:CE2	1:A:151:MET:HE1	2.52	0.45
1:A:193:CYS:HB3	1:A:215:ALA:CB	2.47	0.45
1:A:192:GLU:HG3	1:A:217:SER:HB2	1.98	0.45
1:A:219:LEU:HD21	1:A:257:LEU:CD2	2.46	0.45
1:A:88:THR:OG1	1:A:124:PRO:HA	2.17	0.45
1:A:55:TYR:N	1:A:55:TYR:CD2	2.84	0.45
1:A:114:TYR:HD2	1:A:151:MET:HE2	1.82	0.44
1:A:312:ALA:HA	1:A:317:TYR:CG	2.53	0.43
1:A:190:GLN:HE21	2:A:324:NAP:H2N	1.83	0.43
1:A:215:ALA:O	1:A:268:LEU:HB2	2.17	0.43
1:A:314:HIS:CE1	1:A:316:ASN:HB2	2.53	0.43
1:A:169:ASN:H	1:A:172:GLN:NE2	2.16	0.42
1:A:71:ASP:C	1:A:71:ASP:OD2	2.58	0.42
1:A:86:TRP:CE3	1:A:86:TRP:HA	2.55	0.42
1:A:120:MET:HB3	3:A:325:15M:H21	2.01	0.42
1:A:217:SER:HB3	1:A:220:GLY:O	2.19	0.42
1:A:253:ALA:O	1:A:257:LEU:HG	2.20	0.42
1:A:217:SER:HA	2:A:324:NAP:O1A	2.21	0.41
1:A:219:LEU:HD12	2:A:324:NAP:H51A	2.02	0.41
1:A:127:GLU:HG2	1:A:127:GLU:H	1.47	0.41
1:A:278:ARG:O	1:A:281:VAL:HG22	2.21	0.40
1:A:194:HIS:HB2	1:A:195:PRO:CD	2.51	0.40
1:A:91:ARG:HA	1:A:92:PRO:HD2	1.77	0.40
1:A:66:ARG:NE	1:A:107:GLN:HB2	2.36	0.40

There are no symmetry-related clashes.

5.3 Torsion angles ⓘ

5.3.1 Protein backbone ⓘ

In the following table, the Percentiles column shows the percent Ramachandran outliers of the chain as a percentile score with respect to all X-ray entries followed by that with respect to entries

of similar resolution.

The Analysed column shows the number of residues for which the backbone conformation was analysed, and the total number of residues.

Mol	Chain	Analysed	Favoured	Allowed	Outliers	Percentiles	
1	A	317/323 (98%)	309 (98%)	7 (2%)	1 (0%)	46	41

All (1) Ramachandran outliers are listed below:

Mol	Chain	Res	Type
1	A	309	ASP

5.3.2 Protein sidechains ⓘ

In the following table, the Percentiles column shows the percent sidechain outliers of the chain as a percentile score with respect to all X-ray entries followed by that with respect to entries of similar resolution.

The Analysed column shows the number of residues for which the sidechain conformation was analysed, and the total number of residues.

Mol	Chain	Analysed	Rotameric	Outliers	Percentiles	
1	A	283/287 (99%)	257 (91%)	26 (9%)	11	6

All (26) residues with a non-rotameric sidechain are listed below:

Mol	Chain	Res	Type
1	A	5	GLN
1	A	11	ASN
1	A	12	ASP
1	A	19	LEU
1	A	31	ARG
1	A	32	SER
1	A	36	GLU
1	A	60	GLN
1	A	82	THR
1	A	103	LEU
1	A	111	VAL
1	A	122	LEU
1	A	127	GLU
1	A	151	MET
1	A	153	LYS
1	A	155	LYS

Continued on next page...

Continued from previous page...

Mol	Chain	Res	Type
1	A	163	ILE
1	A	198	ASN
1	A	203	LEU
1	A	212	VAL
1	A	225	LYS
1	A	249	LYS
1	A	261	LEU
1	A	268	LEU
1	A	299	LEU
1	A	309	ASP

Some sidechains can be flipped to improve hydrogen bonding and reduce clashes. All (14) such sidechains are listed below:

Mol	Chain	Res	Type
1	A	5	GLN
1	A	6	GLN
1	A	11	ASN
1	A	53	HIS
1	A	56	ASN
1	A	60	GLN
1	A	134	ASN
1	A	172	GLN
1	A	190	GLN
1	A	198	ASN
1	A	275	GLN
1	A	287	GLN
1	A	302	ASN
1	A	304	HIS

5.3.3 RNA ⓘ

There are no RNA molecules in this entry.

5.4 Non-standard residues in protein, DNA, RNA chains ⓘ

There are no non-standard protein/DNA/RNA residues in this entry.

5.5 Carbohydrates ⓘ

There are no carbohydrates in this entry.

5.6 Ligand geometry

2 ligands are modelled in this entry.

In the following table, the Counts columns list the number of bonds (or angles) for which Mogul statistics could be retrieved, the number of bonds (or angles) that are observed in the model and the number of bonds (or angles) that are defined in the chemical component dictionary. The Link column lists molecule types, if any, to which the group is linked. The Z score for a bond length (or angle) is the number of standard deviations the observed value is removed from the expected value. A bond length (or angle) with $|Z| > 2$ is considered an outlier worth inspection. RMSZ is the root-mean-square of all Z scores of the bond lengths (or angles).

Mol	Type	Chain	Res	Link	Bond lengths			Bond angles		
					Counts	RMSZ	# $ Z > 2$	Counts	RMSZ	# $ Z > 2$
2	NAP	A	324	-	42,52,52	1.80	7 (16%)	54,80,80	1.90	13 (24%)
3	15M	A	325	-	31,31,31	1.55	7 (22%)	31,39,39	1.01	3 (9%)

In the following table, the Chirals column lists the number of chiral outliers, the number of chiral centers analysed, the number of these observed in the model and the number defined in the chemical component dictionary. Similar counts are reported in the Torsion and Rings columns. '-' means no outliers of that kind were identified.

Mol	Type	Chain	Res	Link	Chirals	Torsions	Rings
2	NAP	A	324	-	-	0/27/67/67	0/5/5/5
3	15M	A	325	-	-	0/22/38/38	0/2/2/2

All (14) bond length outliers are listed below:

Mol	Chain	Res	Type	Atoms	Z	Observed(Å)	Ideal(Å)
3	A	325	15M	C25-N	-3.39	1.34	1.46
2	A	324	NAP	PA-O1A	-2.74	1.41	1.51
3	A	325	15M	C19-C18	2.11	1.43	1.38
3	A	325	15M	C2-C1	2.13	1.55	1.51
3	A	325	15M	C22-C23	2.13	1.43	1.38
3	A	325	15M	C21-C20	2.19	1.43	1.38
2	A	324	NAP	C4A-N3A	2.29	1.39	1.35
3	A	325	15M	C23-C18	2.36	1.43	1.38
2	A	324	NAP	C6N-N1N	3.59	1.45	1.35
2	A	324	NAP	C2A-N3A	3.76	1.38	1.32
2	A	324	NAP	C2A-N1A	3.93	1.41	1.33
3	A	325	15M	O1-C1	3.96	1.31	1.23
2	A	324	NAP	C4N-C3N	4.88	1.47	1.39
2	A	324	NAP	O4D-C1D	4.88	1.47	1.41

All (16) bond angle outliers are listed below:

Mol	Chain	Res	Type	Atoms	Z	Observed(°)	Ideal(°)
2	A	324	NAP	N3A-C2A-N1A	-7.89	122.85	128.89
2	A	324	NAP	C1B-N9A-C4A	-3.96	120.97	126.94
2	A	324	NAP	O3-PA-O5B	-3.27	94.27	102.94
2	A	324	NAP	O4B-C4B-C5B	-2.84	99.17	109.32
2	A	324	NAP	O7N-C7N-C3N	-2.64	116.71	119.59
3	A	325	15M	C17-C16-C15	-2.59	110.71	114.33
2	A	324	NAP	O5B-C5B-C4B	-2.35	100.44	109.12
3	A	325	15M	C15-C14-C13	-2.03	119.73	125.18
2	A	324	NAP	C2B-C3B-C4B	2.06	106.73	101.85
3	A	325	15M	C24-C25-N	2.19	119.60	111.39
2	A	324	NAP	O4D-C1D-N1N	2.35	110.71	108.13
2	A	324	NAP	O3X-P2B-O2X	2.35	116.33	107.38
2	A	324	NAP	O2A-PA-O1A	2.61	126.69	112.53
2	A	324	NAP	C3N-C7N-N7N	2.66	120.73	117.82
2	A	324	NAP	C2N-C3N-C4N	2.89	121.51	118.29
2	A	324	NAP	C4B-O4B-C1B	3.44	113.50	109.72

There are no chirality outliers.

There are no torsion outliers.

There are no ring outliers.

2 monomers are involved in 7 short contacts:

Mol	Chain	Res	Type	Clashes	Symm-Clashes
2	A	324	NAP	6	0
3	A	325	15M	1	0

5.7 Other polymers [i](#)

There are no such residues in this entry.

5.8 Polymer linkage issues [i](#)

There are no chain breaks in this entry.

6 Fit of model and data [i](#)

6.1 Protein, DNA and RNA chains [i](#)

In the following table, the column labelled ‘#RSRZ> 2’ contains the number (and percentage) of RSRZ outliers, followed by percent RSRZ outliers for the chain as percentile scores relative to all X-ray entries and entries of similar resolution. The OWAB column contains the minimum, median, 95th percentile and maximum values of the occupancy-weighted average B-factor per residue. The column labelled ‘Q< 0.9’ lists the number of (and percentage) of residues with an average occupancy less than 0.9.

Mol	Chain	Analysed	<RSRZ>	#RSRZ>2	OWAB(Å ²)	Q<0.9
1	A	319/323 (98%)	-0.17	6 (1%) 70 70	2, 5, 17, 29	0

All (6) RSRZ outliers are listed below:

Mol	Chain	Res	Type	RSRZ
1	A	309	ASP	4.2
1	A	5	GLN	4.0
1	A	220	GLY	2.7
1	A	135	GLY	2.5
1	A	257	LEU	2.3
1	A	133	GLU	2.0

6.2 Non-standard residues in protein, DNA, RNA chains [i](#)

There are no non-standard protein/DNA/RNA residues in this entry.

6.3 Carbohydrates [i](#)

There are no carbohydrates in this entry.

6.4 Ligands [i](#)

In the following table, the Atoms column lists the number of modelled atoms in the group and the number defined in the chemical component dictionary. LLDF column lists the quality of electron density of the group with respect to its neighbouring residues in protein, DNA or RNA chains. The B-factors column lists the minimum, median, 95th percentile and maximum values of B factors of atoms in the group. The column labelled ‘Q< 0.9’ lists the number of atoms with occupancy less than 0.9.

Mol	Type	Chain	Res	Atoms	RSCC	RSR	LLDF	B-factors(\AA^2)	Q<0.9
3	15M	A	325	30/30	0.88	0.15	1.70	4,15,18,21	0
2	NAP	A	324	48/48	0.96	0.10	-0.24	2,3,6,9	0

6.5 Other polymers [i](#)

There are no such residues in this entry.