



Full wwPDB X-ray Structure Validation Report ⓘ

Feb 1, 2016 – 08:36 AM GMT

PDB ID : 3FBR
Title : structure of HipA-amppnp-peptide
Authors : Schumacher, M.A.
Deposited on : 2008-11-19
Resolution : 3.50 Å(reported)

This is a Full wwPDB X-ray Structure Validation Report for a publicly released PDB entry.
We welcome your comments at validation@mail.wwpdb.org
A user guide is available at
<http://wwpdb.org/validation/2016/XrayValidationReportHelp>
with specific help available everywhere you see the ⓘ symbol.

The following versions of software and data (see [references ⓘ](#)) were used in the production of this report:

MolProbity : 4.02b-467
Mogul : 1.7 (RC4), CSD as536be (2015)
Xtriage (Phenix) : 1.9-1692
EDS : rb-20026688
Percentile statistics : 20151230.v01 (using entries in the PDB archive December 30th 2015)
Refmac : 5.8.0135
CCP4 : 6.5.0
Ideal geometry (proteins) : Engh & Huber (2001)
Ideal geometry (DNA, RNA) : Parkinson et al. (1996)
Validation Pipeline (wwPDB-VP) : trunk26865

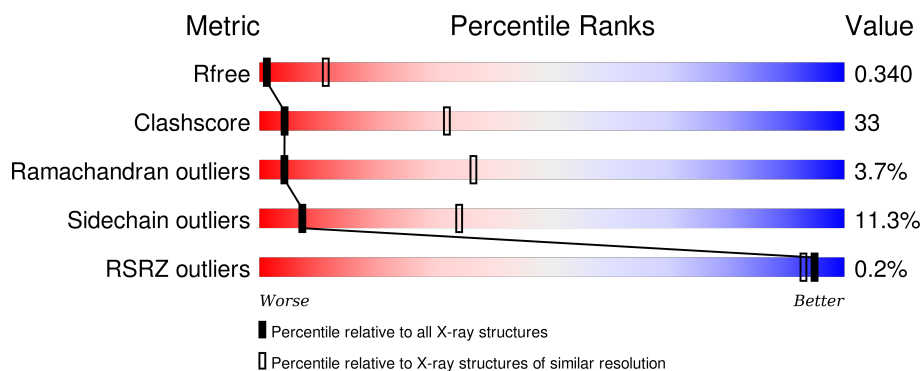
1 Overall quality at a glance

The following experimental techniques were used to determine the structure:

X-RAY DIFFRACTION

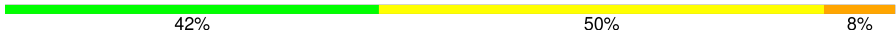

The reported resolution of this entry is 3.50 Å.

Percentile scores (ranging between 0-100) for global validation metrics of the entry are shown in the following graphic. The table shows the number of entries on which the scores are based.



Metric	Whole archive (#Entries)	Similar resolution (#Entries, resolution range(Å))
R_{free}	91344	1051 (3.60-3.40)
Clashscore	102246	1157 (3.60-3.40)
Ramachandran outliers	100387	1120 (3.60-3.40)
Sidechain outliers	100360	1121 (3.60-3.40)
RSRZ outliers	91569	1058 (3.60-3.40)

The table below summarises the geometric issues observed across the polymeric chains and their fit to the electron density. The red, orange, yellow and green segments on the lower bar indicate the fraction of residues that contain outliers for ≥ 3 , 2, 1 and 0 types of geometric quality criteria. A grey segment represents the fraction of residues that are not modelled. The numeric value for each fraction is indicated below the corresponding segment, with a dot representing fractions $\leq 5\%$. The upper red bar (where present) indicates the fraction of residues that have poor fit to the electron density. The numeric value is given above the bar.

Mol	Chain	Length	Quality of chain
1	A	437	
2	B	9	

2 Entry composition [i](#)

There are 4 unique types of molecules in this entry. The entry contains 3521 atoms, of which 0 are hydrogens and 0 are deuteriums.

In the tables below, the ZeroOcc column contains the number of atoms modelled with zero occupancy, the AltConf column contains the number of residues with at least one atom in alternate conformation and the Trace column contains the number of residues modelled with at most 2 atoms.

- Molecule 1 is a protein called Protein hipA.

Mol	Chain	Residues	Atoms					ZeroOcc	AltConf	Trace
1	A	436	Total	C	N	O	S	0	0	0
			3446	2204	601	628	13			

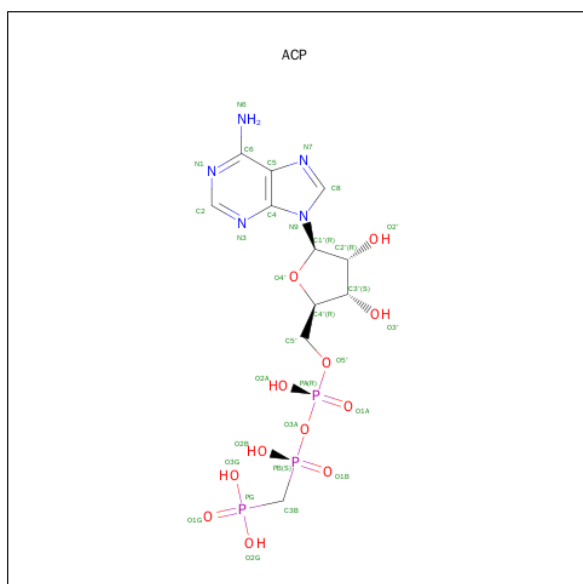
There is a discrepancy between the modelled and reference sequences:

Chain	Residue	Modelled	Actual	Comment	Reference
A	309	GLN	ASP	ENGINEERED	UNP P23874

- Molecule 2 is a protein called peptide of EF-Tu.

Mol	Chain	Residues	Atoms				ZeroOcc	AltConf	Trace
2	B	9	Total	C	N	O	0	0	0
			42	24	9	9			

- Molecule 3 is PHOSPHOMETHYLPHOSPHONIC ACID ADENYLATE ESTER (three-letter code: ACP) (formula: $C_{11}H_{18}N_5O_{12}P_3$).



Mol	Chain	Residues	Atoms					ZeroOcc	AltConf
3	A	1	Total	C	N	O	P	0	0
			31	11	5	12	3		

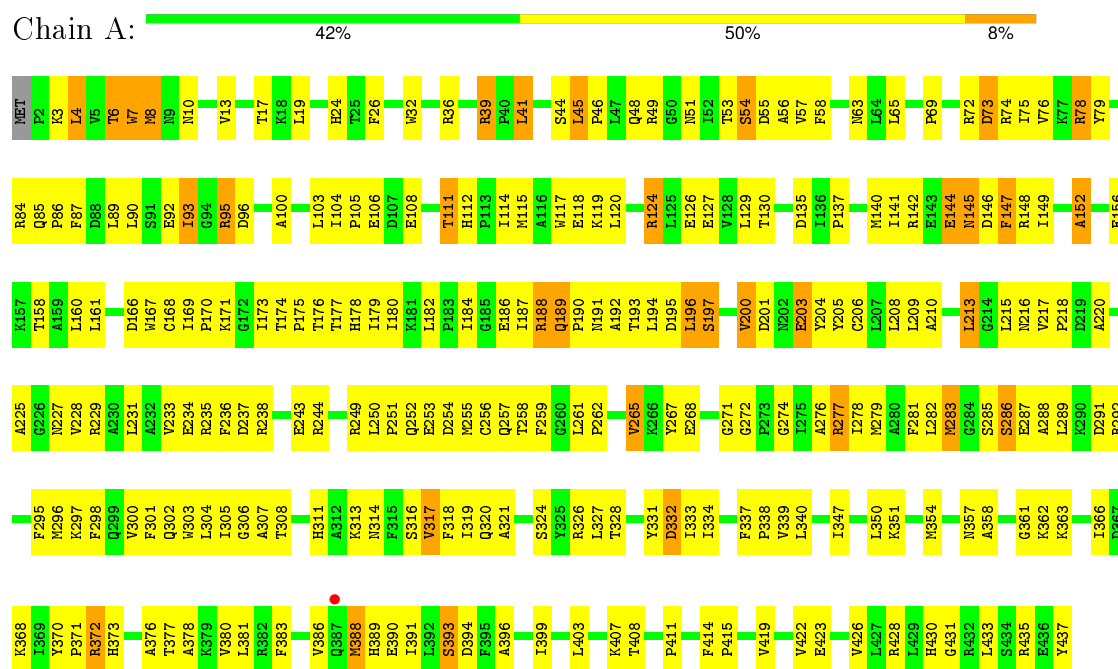
- Molecule 4 is water.

Mol	Chain	Residues	Atoms		ZeroOcc	AltConf
4	A	2	Total	O	0	0
			2	2		

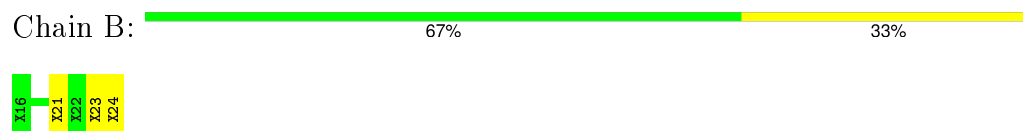
3 Residue-property plots

These plots are drawn for all protein, RNA and DNA chains in the entry. The first graphic for a chain summarises the proportions of errors displayed in the second graphic. The second graphic shows the sequence view annotated by issues in geometry and electron density. Residues are color-coded according to the number of geometric quality criteria for which they contain at least one outlier: green = 0, yellow = 1, orange = 2 and red = 3 or more. A red dot above a residue indicates a poor fit to the electron density ($\text{RSRZ} > 2$). Stretches of 2 or more consecutive residues without any outlier are shown as a green connector. Residues present in the sample, but not in the model, are shown in grey.

• Molecule 1: Protein hipA



• Molecule 2: peptide of EF-Tu



4 Data and refinement statistics

Property	Value	Source
Space group	I 4 2 2	Depositor
Cell constants a, b, c, α , β , γ	128.40 Å 128.40 Å 203.92 Å 90.00° 90.00° 90.00°	Depositor
Resolution (Å)	33.90 – 3.50 33.90 – 3.50	Depositor EDS
% Data completeness (in resolution range)	89.7 (33.90-3.50) 89.8 (33.90-3.50)	Depositor EDS
R_{merge}	0.13	Depositor
R_{sym}	0.13	Depositor
$\langle I/\sigma(I) \rangle$ ¹	1.66 (at 3.47 Å)	Xtriage
Refinement program	CNS 1.2	Depositor
R, R_{free}	0.282 , 0.336 0.282 , 0.340	Depositor DCC
R_{free} test set	881 reflections (8.84%)	DCC
Wilson B-factor (Å ²)	84.2	Xtriage
Anisotropy	0.073	Xtriage
Bulk solvent k_{sol} (e/Å ³), B_{sol} (Å ²)	0.29 , 46.3	EDS
Estimated twinning fraction	No twinning to report.	Xtriage
L-test for twinning ²	$\langle L \rangle = 0.45$, $\langle L^2 \rangle = 0.27$	Xtriage
Outliers	0 of 9966 reflections	Xtriage
F_o, F_c correlation	0.81	EDS
Total number of atoms	3521	wwPDB-VP
Average B, all atoms (Å ²)	46.0	wwPDB-VP

Xtriage's analysis on translational NCS is as follows: *The largest off-origin peak in the Patterson function is 3.10% of the height of the origin peak. No significant pseudotranslation is detected.*

¹Intensities estimated from amplitudes.

²Theoretical values of $\langle |L| \rangle$, $\langle L^2 \rangle$ for acentric reflections are 0.5, 0.375 respectively for untwinned datasets, and 0.333, 0.2 for perfectly twinned datasets.

5 Model quality [i](#)

5.1 Standard geometry [i](#)

Bond lengths and bond angles in the following residue types are not validated in this section: ACP

The Z score for a bond length (or angle) is the number of standard deviations the observed value is removed from the expected value. A bond length (or angle) with $|Z| > 5$ is considered an outlier worth inspection. RMSZ is the root-mean-square of all Z scores of the bond lengths (or angles).

Mol	Chain	Bond lengths		Bond angles	
		RMSZ	$\# Z > 5$	RMSZ	$\# Z > 5$
1	A	0.52	0/3523	0.74	1/4777 (0.0%)

There are no bond length outliers.

All (1) bond angle outliers are listed below:

Mol	Chain	Res	Type	Atoms	Z	Observed($^{\circ}$)	Ideal($^{\circ}$)
1	A	111	THR	N-CA-C	-5.41	96.38	111.00

There are no chirality outliers.

There are no planarity outliers.

5.2 Too-close contacts [i](#)

In the following table, the Non-H and H(model) columns list the number of non-hydrogen atoms and hydrogen atoms in the chain respectively. The H(added) column lists the number of hydrogen atoms added and optimized by MolProbity. The Clashes column lists the number of clashes within the asymmetric unit, whereas Symm-Clashes lists symmetry related clashes.

Mol	Chain	Non-H	H(model)	H(added)	Clashes	Symm-Clashes
1	A	3446	0	3487	231	6
2	B	42	0	10	1	6
3	A	31	0	14	4	0
4	A	2	0	0	2	0
All	All	3521	0	3511	233	6

The all-atom clashscore is defined as the number of clashes found per 1000 atoms (including hydrogen atoms). The all-atom clashscore for this structure is 33.

All (233) close contacts within the same asymmetric unit are listed below, sorted by their clash

magnitude.

Atom-1	Atom-2	Interatomic distance (Å)	Clash overlap (Å)
1:A:187:ILE:HB	1:A:194:LEU:HB2	1.35	1.04
1:A:363:LYS:HE2	1:A:368:LYS:HB3	1.49	0.94
1:A:78:ARG:NH2	1:A:142:ARG:HA	1.82	0.94
1:A:370:TYR:H	1:A:373:HIS:CD2	1.84	0.94
1:A:370:TYR:H	1:A:373:HIS:HD2	0.94	0.92
1:A:196:LEU:HB3	1:A:339:VAL:HG22	1.50	0.91
1:A:340:LEU:HD21	1:A:350:LEU:HD11	1.55	0.88
1:A:4:LEU:HD22	1:A:103:LEU:HB3	1.56	0.88
1:A:196:LEU:HB3	1:A:339:VAL:CG2	2.05	0.87
1:A:3:LYS:HB2	1:A:106:GLU:HG3	1.57	0.85
1:A:78:ARG:HH22	1:A:142:ARG:HA	1.39	0.83
3:A:500:ACP:H3B2	4:A:439:HOH:O	1.77	0.83
1:A:156:GLU:HG2	1:A:184:ILE:HD11	1.60	0.83
1:A:63:ASN:HB2	1:A:257:GLN:HE21	1.41	0.83
1:A:180:ILE:H	1:A:180:ILE:HD12	1.47	0.78
1:A:105:PRO:HB2	1:A:108:GLU:HG2	1.66	0.77
1:A:304:LEU:HD13	1:A:399:ILE:HD11	1.68	0.76
1:A:156:GLU:HB3	1:A:184:ILE:HG13	1.68	0.76
1:A:24:HIS:NE2	1:A:87:PHE:HB2	2.01	0.76
1:A:370:TYR:N	1:A:373:HIS:HD2	1.79	0.76
1:A:75:ILE:HA	1:A:137:PRO:HG3	1.68	0.76
1:A:96:ASP:OD2	1:A:175:PRO:HA	1.89	0.71
1:A:187:ILE:HG22	1:A:188:ARG:H	1.55	0.71
1:A:124:ARG:HH11	1:A:124:ARG:HG2	1.56	0.70
1:A:188:ARG:HD2	1:A:267:TYR:CE2	2.28	0.68
1:A:372:ARG:HH11	1:A:372:ARG:HB3	1.58	0.67
1:A:187:ILE:HD13	1:A:196:LEU:HD21	1.75	0.67
1:A:332:ASP:OD2	4:A:439:HOH:O	2.13	0.66
1:A:144:GLU:HG2	1:A:146:ASP:OD1	1.94	0.66
1:A:244:ARG:N	1:A:244:ARG:HD2	2.11	0.65
1:A:362:LYS:N	1:A:362:LYS:HD2	2.12	0.65
1:A:203:GLU:HB2	1:A:334:ILE:HD11	1.79	0.65
1:A:361:GLY:C	1:A:362:LYS:HD2	2.16	0.64
1:A:93:ILE:HB	1:A:149:ILE:O	1.97	0.64
1:A:358:ALA:HB2	1:A:363:LYS:HB2	1.79	0.64
1:A:141:ILE:HG13	1:A:141:ILE:O	1.96	0.64
1:A:302:GLN:HG2	1:A:307:ALA:HB3	1.80	0.64
1:A:206:CYS:HB3	1:A:333:ILE:HG22	1.80	0.64
1:A:4:LEU:CD2	1:A:103:LEU:HB3	2.27	0.64
1:A:95:ARG:N	1:A:95:ARG:HD3	2.12	0.64
1:A:140:MET:HA	1:A:147:PHE:CD1	2.34	0.63

Continued on next page...

Continued from previous page...

Atom-1	Atom-2	Interatomic distance (Å)	Clash overlap (Å)
1:A:6:THR:HG23	1:A:103:LEU:HD23	1.81	0.63
1:A:376:ALA:O	1:A:380:VAL:HG23	1.97	0.63
1:A:308:THR:HG22	1:A:351:LYS:O	1.99	0.63
1:A:74:ARG:HG2	1:A:135:ASP:OD2	1.98	0.62
1:A:180:ILE:N	1:A:180:ILE:HD12	2.14	0.62
1:A:93:ILE:CD1	1:A:93:ILE:H	2.12	0.62
1:A:217:VAL:HB	1:A:218:PRO:HD2	1.82	0.62
1:A:115:MET:HG3	1:A:174:THR:HG23	1.81	0.62
1:A:65:LEU:HD13	1:A:89:LEU:HD12	1.81	0.62
1:A:253:GLU:HG2	1:A:319:ILE:HD11	1.83	0.61
1:A:210:ALA:HA	1:A:215:LEU:HD12	1.82	0.61
2:B:21:UNK:O	2:B:23:UNK:N	2.34	0.61
1:A:371:PRO:HD2	1:A:372:ARG:NH2	2.16	0.60
1:A:258:THR:HG23	1:A:259:PHE:CD2	2.35	0.60
1:A:254:ASP:HA	1:A:316:SER:HA	1.83	0.60
1:A:65:LEU:HD11	1:A:86:PRO:HA	1.83	0.60
1:A:304:LEU:HD13	1:A:399:ILE:CD1	2.31	0.59
1:A:283:MET:HG2	1:A:292:ARG:HD2	1.84	0.59
1:A:188:ARG:HD3	1:A:189:GLN:O	2.02	0.59
1:A:188:ARG:HD3	1:A:189:GLN:H	1.68	0.59
1:A:7:TRP:NE1	1:A:104:ILE:HD12	2.18	0.58
1:A:170:PRO:HG3	1:A:176:THR:CG2	2.33	0.58
1:A:141:ILE:CD1	1:A:144:GLU:HB2	2.34	0.58
1:A:13:VAL:HG13	1:A:32:TRP:CE2	2.39	0.57
1:A:93:ILE:H	1:A:93:ILE:HD13	1.69	0.57
1:A:156:GLU:HB3	1:A:184:ILE:CG1	2.35	0.57
1:A:337:PHE:N	1:A:338:PRO:HD2	2.20	0.57
1:A:49:ARG:HG2	1:A:49:ARG:HH11	1.69	0.57
1:A:144:GLU:O	1:A:145:ASN:HB2	2.03	0.56
1:A:126:GLU:O	1:A:130:THR:HG23	2.05	0.56
1:A:213:LEU:O	1:A:215:LEU:HG	2.06	0.56
1:A:158:THR:HG22	1:A:180:ILE:HB	1.86	0.56
1:A:65:LEU:HD21	1:A:90:LEU:HG	1.87	0.56
1:A:6:THR:HG23	1:A:103:LEU:CD2	2.36	0.55
1:A:297:LYS:HG3	1:A:391:ILE:HG23	1.88	0.55
1:A:196:LEU:CB	1:A:339:VAL:HG22	2.31	0.55
1:A:311:HIS:CE1	1:A:314:ASN:ND2	2.74	0.55
1:A:129:LEU:HB3	1:A:228:VAL:HG11	1.87	0.55
1:A:120:LEU:HB2	1:A:167:TRP:O	2.07	0.54
1:A:200:VAL:HG12	1:A:231:LEU:HB2	1.89	0.54
1:A:141:ILE:HD11	1:A:144:GLU:HB2	1.89	0.54

Continued on next page...

Continued from previous page...

Atom-1	Atom-2	Interatomic distance (Å)	Clash overlap (Å)
1:A:26:PHE:CE2	1:A:41:LEU:HD12	2.42	0.54
1:A:179:ILE:HG22	1:A:179:ILE:O	2.06	0.54
1:A:370:TYR:HB3	1:A:372:ARG:NH2	2.22	0.54
1:A:170:PRO:HB2	1:A:174:THR:HB	1.89	0.54
1:A:201:ASP:HB3	1:A:414:PHE:CE2	2.42	0.54
1:A:180:ILE:HA	1:A:231:LEU:O	2.06	0.54
1:A:187:ILE:HG22	1:A:188:ARG:N	2.21	0.53
1:A:386:VAL:HG22	1:A:386:VAL:O	2.08	0.53
1:A:262:PRO:HD2	1:A:265:VAL:CG2	2.39	0.53
1:A:347:ILE:HG13	1:A:350:LEU:HD12	1.90	0.53
1:A:311:HIS:CE1	1:A:314:ASN:HD22	2.26	0.53
1:A:243:GLU:O	1:A:244:ARG:HB2	2.09	0.53
1:A:93:ILE:N	1:A:93:ILE:HD13	2.24	0.53
1:A:63:ASN:CB	1:A:257:GLN:HE21	2.16	0.53
1:A:285:SER:OG	1:A:326:ARG:HA	2.08	0.52
1:A:428:ARG:HG2	1:A:428:ARG:NH1	2.24	0.52
1:A:196:LEU:HB3	1:A:339:VAL:HG21	1.88	0.52
1:A:276:ALA:HA	1:A:381:LEU:HD21	1.90	0.52
1:A:277:ARG:O	1:A:277:ARG:HD3	2.10	0.52
1:A:161:LEU:HD22	1:A:174:THR:CG2	2.40	0.52
1:A:403:LEU:HD13	1:A:423:GLU:HB2	1.91	0.52
1:A:190:PRO:C	1:A:192:ALA:H	2.12	0.52
1:A:189:GLN:NE2	1:A:194:LEU:HD11	2.25	0.51
1:A:253:GLU:O	1:A:316:SER:HB3	2.10	0.51
1:A:156:GLU:CB	1:A:184:ILE:HG13	2.39	0.51
1:A:182:LEU:HD22	1:A:182:LEU:N	2.26	0.51
1:A:254:ASP:O	1:A:258:THR:HB	2.10	0.51
1:A:54:SER:C	1:A:56:ALA:N	2.61	0.51
1:A:152:ALA:HB3	3:A:500:ACP:H4'	1.93	0.50
1:A:39:ARG:HD2	1:A:321:ALA:HA	1.93	0.50
1:A:431:GLY:O	1:A:435:ARG:HG3	2.11	0.50
1:A:57:VAL:O	1:A:57:VAL:HG12	2.11	0.50
1:A:170:PRO:HG3	1:A:176:THR:HG23	1.94	0.50
1:A:209:LEU:O	1:A:213:LEU:HB2	2.11	0.49
1:A:111:THR:HG22	1:A:112:HIS:H	1.77	0.49
1:A:252:GLN:HG2	1:A:253:GLU:N	2.28	0.49
1:A:188:ARG:CB	1:A:267:TYR:OH	2.61	0.49
1:A:255:MET:HA	1:A:258:THR:CG2	2.43	0.49
1:A:180:ILE:CD1	1:A:180:ILE:H	2.23	0.48
1:A:170:PRO:HG3	1:A:176:THR:HG22	1.95	0.48
1:A:105:PRO:HB2	1:A:108:GLU:CG	2.39	0.48

Continued on next page...

Continued from previous page...

Atom-1	Atom-2	Interatomic distance (Å)	Clash overlap (Å)
1:A:124:ARG:O	1:A:127:GLU:HB2	2.12	0.48
1:A:84:ARG:HG2	1:A:84:ARG:HH11	1.78	0.48
1:A:124:ARG:NH1	1:A:124:ARG:HG2	2.26	0.48
1:A:296:MET:HB3	1:A:388:MET:HE2	1.95	0.48
1:A:303:TRP:CE3	1:A:304:LEU:HG	2.48	0.48
1:A:120:LEU:HD11	1:A:169:ILE:HG13	1.95	0.48
1:A:220:ALA:HB2	1:A:233:VAL:HG13	1.95	0.48
1:A:318:PHE:CD1	1:A:328:THR:HG22	2.49	0.48
1:A:79:TYR:HB3	1:A:92:GLU:OE1	2.14	0.48
1:A:390:GLU:O	1:A:393:SER:HB3	2.14	0.48
1:A:117:TRP:CD1	1:A:118:GLU:N	2.82	0.48
1:A:170:PRO:CB	1:A:174:THR:HB	2.44	0.47
1:A:161:LEU:HD22	1:A:174:THR:HG21	1.95	0.47
1:A:300:VAL:HG12	1:A:304:LEU:CD1	2.45	0.47
1:A:262:PRO:HD2	1:A:265:VAL:HG21	1.96	0.47
1:A:188:ARG:HB2	1:A:267:TYR:OH	2.15	0.47
1:A:65:LEU:HB2	1:A:72:ARG:HH21	1.80	0.47
1:A:95:ARG:H	1:A:95:ARG:HD3	1.80	0.47
1:A:378:ALA:HB2	1:A:388:MET:HG3	1.97	0.47
1:A:393:SER:O	1:A:394:ASP:C	2.51	0.46
1:A:291:ASP:OD1	1:A:327:LEU:HB3	2.16	0.46
1:A:316:SER:O	1:A:317:VAL:HG13	2.16	0.46
1:A:238:ARG:CZ	1:A:249:ARG:HG2	2.46	0.46
1:A:428:ARG:HG2	1:A:428:ARG:HH11	1.81	0.46
1:A:422:VAL:O	1:A:426:VAL:HG23	2.15	0.46
1:A:389:HIS:CE1	1:A:437:TYR:HH	2.31	0.46
1:A:7:TRP:HE1	1:A:104:ILE:HB	1.81	0.46
1:A:296:MET:HB3	1:A:388:MET:CE	2.46	0.46
1:A:190:PRO:O	1:A:192:ALA:N	2.49	0.46
1:A:301:PHE:O	1:A:305:ILE:HG12	2.16	0.46
1:A:117:TRP:CD1	1:A:168:CYS:SG	3.07	0.45
1:A:8:MET:HA	1:A:100:ALA:O	2.16	0.45
1:A:65:LEU:CD1	1:A:86:PRO:HA	2.47	0.45
1:A:430:HIS:O	1:A:433:LEU:HB2	2.16	0.45
1:A:277:ARG:NH1	1:A:277:ARG:HG3	2.31	0.45
1:A:115:MET:CG	1:A:174:THR:HG23	2.47	0.45
1:A:204:TYR:CE2	1:A:208:LEU:HD11	2.52	0.45
1:A:277:ARG:HH11	1:A:277:ARG:HG3	1.81	0.45
1:A:140:MET:HB3	1:A:147:PHE:HB3	1.99	0.45
1:A:300:VAL:HG12	1:A:304:LEU:HD12	1.98	0.44
1:A:129:LEU:HD12	1:A:225:ALA:HB3	1.98	0.44

Continued on next page...

Continued from previous page...

Atom-1	Atom-2	Interatomic distance (Å)	Clash overlap (Å)
1:A:190:PRO:C	1:A:192:ALA:N	2.70	0.44
1:A:234:GLU:O	1:A:235:ARG:C	2.54	0.44
1:A:178:HIS:HA	1:A:235:ARG:HG3	2.00	0.44
1:A:250:LEU:O	1:A:251:PRO:C	2.54	0.44
1:A:258:THR:HG23	1:A:259:PHE:CE2	2.52	0.44
1:A:357:ASN:OD1	1:A:380:VAL:HG21	2.17	0.44
1:A:378:ALA:CB	1:A:388:MET:HG3	2.47	0.44
1:A:93:ILE:CD1	1:A:93:ILE:N	2.76	0.44
1:A:72:ARG:HB3	1:A:84:ARG:HH12	1.83	0.44
1:A:236:PHE:CD2	3:A:500:ACP:N1	2.86	0.44
1:A:386:VAL:CG2	1:A:386:VAL:O	2.65	0.44
1:A:393:SER:O	1:A:396:ALA:N	2.51	0.44
1:A:370:TYR:HB3	1:A:372:ARG:CZ	2.48	0.43
1:A:320:GLN:N	1:A:324:SER:O	2.51	0.43
1:A:357:ASN:HB3	1:A:377:THR:HA	2.00	0.43
1:A:237:ASP:HA	1:A:250:LEU:HB2	2.01	0.43
1:A:114:ILE:HG23	1:A:173:ILE:CD1	2.48	0.43
1:A:407:LYS:HD3	1:A:423:GLU:OE1	2.18	0.43
1:A:188:ARG:O	1:A:189:GLN:HB2	2.19	0.43
1:A:196:LEU:HB2	1:A:197:SER:H	1.37	0.43
1:A:285:SER:O	1:A:288:ALA:HB2	2.19	0.43
1:A:268:GLU:HA	1:A:272:GLY:H	1.82	0.43
1:A:274:GLY:HA2	1:A:354:MET:SD	2.58	0.43
1:A:144:GLU:HB3	1:A:145:ASN:H	1.54	0.43
1:A:286:SER:HB2	1:A:320:GLN:HE22	1.84	0.43
1:A:114:ILE:HG23	1:A:173:ILE:HD11	2.01	0.43
1:A:337:PHE:N	1:A:338:PRO:CD	2.81	0.42
1:A:7:TRP:CD1	1:A:7:TRP:N	2.86	0.42
1:A:147:PHE:CZ	1:A:169:ILE:HG23	2.54	0.42
1:A:259:PHE:CE1	1:A:277:ARG:HD2	2.55	0.42
1:A:46:PRO:O	1:A:48:GLN:HG2	2.20	0.42
1:A:78:ARG:C	1:A:78:ARG:CD	2.88	0.42
1:A:78:ARG:HB3	1:A:79:TYR:CD1	2.55	0.42
1:A:104:ILE:HA	1:A:105:PRO:HD3	1.94	0.42
1:A:44:SER:OG	1:A:45:LEU:HD23	2.19	0.42
1:A:147:PHE:C	1:A:148:ARG:HG2	2.39	0.42
1:A:370:TYR:HB3	1:A:371:PRO:HD2	2.01	0.42
1:A:160:LEU:O	1:A:177:THR:N	2.50	0.42
1:A:69:PRO:O	1:A:73:ASP:N	2.52	0.42
1:A:331:TYR:CE1	3:A:500:ACP:H3'	2.54	0.42
1:A:58:PHE:CE1	1:A:86:PRO:HG3	2.55	0.42

Continued on next page...

Continued from previous page...

Atom-1	Atom-2	Interatomic distance (Å)	Clash overlap (Å)
1:A:65:LEU:HD21	1:A:90:LEU:CD2	2.50	0.42
1:A:63:ASN:HB3	1:A:313:LYS:NZ	2.35	0.42
1:A:383:PHE:HE2	1:A:388:MET:HG2	1.85	0.42
1:A:295:PHE:O	1:A:298:PHE:N	2.49	0.42
1:A:278:ILE:O	1:A:281:PHE:HB3	2.19	0.41
1:A:316:SER:O	1:A:327:LEU:HD12	2.20	0.41
1:A:141:ILE:HD12	1:A:144:GLU:HB2	2.01	0.41
1:A:209:LEU:HD13	1:A:403:LEU:HD23	2.01	0.41
1:A:279:MET:O	1:A:282:LEU:N	2.51	0.41
1:A:188:ARG:HD2	1:A:267:TYR:CZ	2.56	0.41
1:A:209:LEU:HG	1:A:213:LEU:HD12	2.02	0.41
1:A:120:LEU:HD11	1:A:169:ILE:CG1	2.50	0.41
1:A:210:ALA:O	1:A:215:LEU:HB2	2.20	0.41
1:A:205:TYR:CE1	1:A:419:VAL:HG22	2.55	0.41
1:A:93:ILE:O	1:A:148:ARG:O	2.38	0.41
1:A:337:PHE:C	1:A:339:VAL:H	2.24	0.41
1:A:254:ASP:OD2	1:A:257:GLN:HG3	2.20	0.41
1:A:161:LEU:HB3	1:A:170:PRO:HD3	2.02	0.41
1:A:182:LEU:HD13	1:A:182:LEU:HA	1.76	0.41
1:A:200:VAL:HG12	1:A:231:LEU:CB	2.51	0.40
1:A:303:TRP:HD1	1:A:366:ILE:HG23	1.86	0.40
1:A:253:GLU:HB2	1:A:257:GLN:OE1	2.20	0.40
1:A:146:ASP:CG	1:A:171:LYS:HE3	2.42	0.40
1:A:206:CYS:HB3	1:A:333:ILE:CG2	2.48	0.40
1:A:58:PHE:CZ	1:A:86:PRO:HG3	2.56	0.40
1:A:188:ARG:CD	1:A:189:GLN:H	2.33	0.40
1:A:363:LYS:CE	1:A:368:LYS:HB3	2.35	0.40
1:A:279:MET:C	1:A:281:PHE:N	2.73	0.40

All (6) symmetry-related close contacts are listed below. The label for Atom-2 includes the symmetry operator and encoded unit-cell translations to be applied.

Atom-1	Atom-2	Interatomic distance (Å)	Clash overlap (Å)
1:A:272:GLY:CA	2:B:24:UNK:CB[4_555]	1.51	0.69
1:A:271:GLY:O	2:B:24:UNK:CA[4_555]	1.58	0.62
1:A:272:GLY:C	2:B:24:UNK:CB[4_555]	1.80	0.40
1:A:261:LEU:CD1	2:B:24:UNK:O[4_555]	1.86	0.34
1:A:271:GLY:O	2:B:24:UNK:CB[4_555]	1.86	0.34
1:A:272:GLY:N	2:B:24:UNK:CB[4_555]	2.09	0.11

5.3 Torsion angles [i](#)

5.3.1 Protein backbone [i](#)

In the following table, the Percentiles column shows the percent Ramachandran outliers of the chain as a percentile score with respect to all X-ray entries followed by that with respect to entries of similar resolution.

The Analysed column shows the number of residues for which the backbone conformation was analysed, and the total number of residues.

Mol	Chain	Analysed	Favoured	Allowed	Outliers	Percentiles
1	A	434/437 (99%)	347 (80%)	71 (16%)	16 (4%)	4 36

All (16) Ramachandran outliers are listed below:

Mol	Chain	Res	Type
1	A	95	ARG
1	A	144	GLU
1	A	145	ASN
1	A	189	GLN
1	A	286	SER
1	A	332	ASP
1	A	152	ALA
1	A	393	SER
1	A	197	SER
1	A	265	VAL
1	A	415	PRO
1	A	191	ASN
1	A	411	PRO
1	A	54	SER
1	A	306	GLY
1	A	76	VAL

5.3.2 Protein sidechains [i](#)

In the following table, the Percentiles column shows the percent sidechain outliers of the chain as a percentile score with respect to all X-ray entries followed by that with respect to entries of similar resolution.

The Analysed column shows the number of residues for which the sidechain conformation was analysed, and the total number of residues.

Continued on next page...

Continued from previous page...

Mol	Chain	Analysed	Rotameric	Outliers	Percentiles
-----	-------	----------	-----------	----------	-------------

Mol	Chain	Analysed	Rotameric	Outliers	Percentiles
1	A	371/372 (100%)	329 (89%)	42 (11%)	7 34

All (42) residues with a non-rotameric sidechain are listed below:

Mol	Chain	Res	Type
1	A	4	LEU
1	A	6	THR
1	A	7	TRP
1	A	8	MET
1	A	10	ASN
1	A	17	THR
1	A	19	LEU
1	A	36	ARG
1	A	39	ARG
1	A	41	LEU
1	A	45	LEU
1	A	51	ASN
1	A	53	THR
1	A	55	ASP
1	A	73	ASP
1	A	78	ARG
1	A	85	GLN
1	A	93	ILE
1	A	119	LYS
1	A	124	ARG
1	A	147	PHE
1	A	166	ASP
1	A	186	GLU
1	A	188	ARG
1	A	193	THR
1	A	195	ASP
1	A	196	LEU
1	A	200	VAL
1	A	203	GLU
1	A	213	LEU
1	A	216	ASN
1	A	227	ASN
1	A	229	ARG
1	A	256	CYS
1	A	277	ARG

Continued on next page...

Continued from previous page...

Mol	Chain	Res	Type
1	A	283	MET
1	A	287	GLU
1	A	289	LEU
1	A	317	VAL
1	A	372	ARG
1	A	388	MET
1	A	408	THR

Some sidechains can be flipped to improve hydrogen bonding and reduce clashes. All (7) such sidechains are listed below:

Mol	Chain	Res	Type
1	A	63	ASN
1	A	189	GLN
1	A	216	ASN
1	A	257	GLN
1	A	302	GLN
1	A	314	ASN
1	A	373	HIS

5.3.3 RNA ⓘ

There are no RNA molecules in this entry.

5.4 Non-standard residues in protein, DNA, RNA chains ⓘ

There are no non-standard protein/DNA/RNA residues in this entry.

5.5 Carbohydrates ⓘ

There are no carbohydrates in this entry.

5.6 Ligand geometry ⓘ

1 ligand is modelled in this entry.

In the following table, the Counts columns list the number of bonds (or angles) for which Mogul statistics could be retrieved, the number of bonds (or angles) that are observed in the model and the number of bonds (or angles) that are defined in the chemical component dictionary. The Link column lists molecule types, if any, to which the group is linked. The Z score for a bond length

(or angle) is the number of standard deviations the observed value is removed from the expected value. A bond length (or angle) with $|Z| > 2$ is considered an outlier worth inspection. RMSZ is the root-mean-square of all Z scores of the bond lengths (or angles).

Mol	Type	Chain	Res	Link	Bond lengths			Bond angles		
					Counts	RMSZ	$\# Z > 2$	Counts	RMSZ	$\# Z > 2$
3	ACP	A	500	-	25,33,33	2.14	8 (32%)	31,52,52	2.18	8 (25%)

In the following table, the Chirals column lists the number of chiral outliers, the number of chiral centers analysed, the number of these observed in the model and the number defined in the chemical component dictionary. Similar counts are reported in the Torsion and Rings columns. '-' means no outliers of that kind were identified.

Mol	Type	Chain	Res	Link	Chirals	Torsions	Rings
3	ACP	A	500	-	-	0/15/38/38	0/3/3/3

All (8) bond length outliers are listed below:

Mol	Chain	Res	Type	Atoms	Z	Observed(Å)	Ideal(Å)
3	A	500	ACP	PB-O2B	-4.24	1.46	1.56
3	A	500	ACP	PA-O2A	-2.62	1.43	1.54
3	A	500	ACP	PG-O2G	-2.27	1.49	1.54
3	A	500	ACP	C2-N1	2.20	1.38	1.33
3	A	500	ACP	PB-O3A	2.57	1.61	1.58
3	A	500	ACP	O4'-C1'	2.59	1.44	1.41
3	A	500	ACP	C2-N3	4.48	1.40	1.32
3	A	500	ACP	C4-N3	5.81	1.44	1.35

All (8) bond angle outliers are listed below:

Mol	Chain	Res	Type	Atoms	Z	Observed(°)	Ideal(°)
3	A	500	ACP	N3-C2-N1	-4.82	125.21	128.89
3	A	500	ACP	C1'-N9-C4	-3.17	122.16	126.94
3	A	500	ACP	O5'-C5'-C4'	2.11	116.89	109.12
3	A	500	ACP	C2'-C1'-N9	2.42	117.98	114.29
3	A	500	ACP	C4-C5-N7	2.59	111.86	109.48
3	A	500	ACP	C4'-O4'-C1'	3.07	113.09	109.72
3	A	500	ACP	PA-O3A-PB	3.25	141.87	132.73
3	A	500	ACP	O2B-PB-O1B	7.77	134.56	110.12

There are no chirality outliers.

There are no torsion outliers.

There are no ring outliers.

1 monomer is involved in 4 short contacts:

Mol	Chain	Res	Type	Clashes	Symm-Clashes
3	A	500	ACP	4	0

5.7 Other polymers [i](#)

There are no such residues in this entry.

5.8 Polymer linkage issues [i](#)

There are no chain breaks in this entry.

6 Fit of model and data [i](#)

6.1 Protein, DNA and RNA chains [i](#)

In the following table, the column labelled ‘#RSRZ> 2’ contains the number (and percentage) of RSRZ outliers, followed by percent RSRZ outliers for the chain as percentile scores relative to all X-ray entries and entries of similar resolution. The OWAB column contains the minimum, median, 95th percentile and maximum values of the occupancy-weighted average B-factor per residue. The column labelled ‘Q< 0.9’ lists the number of (and percentage) of residues with an average occupancy less than 0.9.

Mol	Chain	Analysed	<RSRZ>	#RSRZ>2	OWAB(Å ²)	Q<0.9
1	A	436/437 (99%)	-0.29	1 (0%) 95 93	19, 45, 73, 83	0
2	B	0/9	-	-	-	-
All	All	436/446 (97%)	-0.29	1 (0%) 95 93	19, 45, 73, 83	0

All (1) RSRZ outliers are listed below:

Mol	Chain	Res	Type	RSRZ
1	A	387	GLN	2.1

6.2 Non-standard residues in protein, DNA, RNA chains [i](#)

There are no non-standard protein/DNA/RNA residues in this entry.

6.3 Carbohydrates [i](#)

There are no carbohydrates in this entry.

6.4 Ligands [i](#)

In the following table, the Atoms column lists the number of modelled atoms in the group and the number defined in the chemical component dictionary. LLDF column lists the quality of electron density of the group with respect to its neighbouring residues in protein, DNA or RNA chains. The B-factors column lists the minimum, median, 95th percentile and maximum values of B factors of atoms in the group. The column labelled ‘Q< 0.9’ lists the number of atoms with occupancy less than 0.9.

Mol	Type	Chain	Res	Atoms	RSCC	RSR	LLDF	B-factors(Å ²)	Q<0.9
3	ACP	A	500	31/31	0.89	0.34	1.53	32,39,80,81	0

6.5 Other polymers [i](#)

There are no such residues in this entry.