



Full wwPDB X-ray Structure Validation Report ⓘ

Mar 20, 2016 – 10:40 AM EDT

PDB ID : 5FBN
Title : BTK kinase domain with inhibitor 1
Authors : Raaijmakers, H.C.A.; Vu-Pham, D.
Deposited on : 2015-12-14
Resolution : 1.80 Å(reported)

This is a Full wwPDB X-ray Structure Validation Report for a publicly released PDB entry.
We welcome your comments at validation@mail.wwpdb.org
A user guide is available at
<http://wwpdb.org/validation/2016/XrayValidationReportHelp>
with specific help available everywhere you see the ⓘ symbol.

The following versions of software and data (see [references ⓘ](#)) were used in the production of this report:

MolProbity : 4.02b-467
Mogul : 1.7.1 (RC1), CSD as537be (2016)
Xtriage (Phenix) : 1.9-1692
EDS : rb-20027107
Percentile statistics : 20151230.v01 (using entries in the PDB archive December 30th 2015)
Refmac : 5.8.0122
CCP4 : 6.5.0
Ideal geometry (proteins) : Engh & Huber (2001)
Ideal geometry (DNA, RNA) : Parkinson et al. (1996)
Validation Pipeline (wwPDB-VP) : rb-20027107

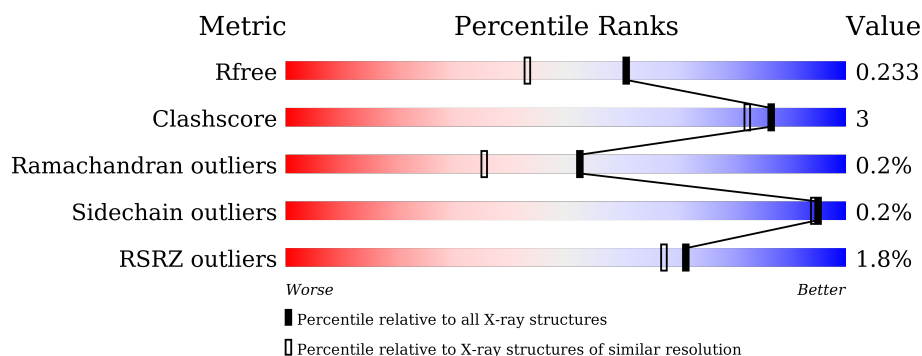
1 Overall quality at a glance ⓘ

The following experimental techniques were used to determine the structure:

X-RAY DIFFRACTION

The reported resolution of this entry is 1.80 Å.

Percentile scores (ranging between 0-100) for global validation metrics of the entry are shown in the following graphic. The table shows the number of entries on which the scores are based.



Metric	Whole archive (#Entries)	Similar resolution (#Entries, resolution range(Å))
R_{free}	91344	4533 (1.80-1.80)
Clashscore	102246	5383 (1.80-1.80)
Ramachandran outliers	100387	5320 (1.80-1.80)
Sidechain outliers	100360	5319 (1.80-1.80)
RSRZ outliers	91569	4547 (1.80-1.80)

The table below summarises the geometric issues observed across the polymeric chains and their fit to the electron density. The red, orange, yellow and green segments on the lower bar indicate the fraction of residues that contain outliers for ≥ 3 , 2, 1 and 0 types of geometric quality criteria. A grey segment represents the fraction of residues that are not modelled. The numeric value for each fraction is indicated below the corresponding segment, with a dot representing fractions $\leq 5\%$. The upper red bar (where present) indicates the fraction of residues that have poor fit to the electron density. The numeric value is given above the bar.

Mol	Chain	Length	Quality of chain
1	C	271	<div> <div> <div></div> <div>87%</div> <div>7%</div> <div>6%</div> </div> </div>
1	D	271	<div> <div> <div></div> <div>87%</div> <div>7%</div> <div>6%</div> </div> </div>

The following table lists non-polymeric compounds, carbohydrate monomers and non-standard residues in protein, DNA, RNA chains that are outliers for geometric or electron-density-fit criteria:

Mol	Type	Chain	Res	Chirality	Geometry	Clashes	Electron density
5	EDO	D	706	-	-	-	X

2 Entry composition [i](#)

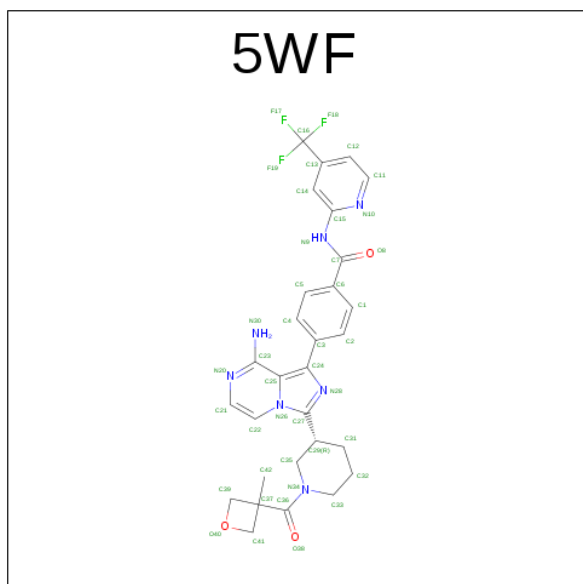
There are 6 unique types of molecules in this entry. The entry contains 5015 atoms, of which 0 are hydrogens and 0 are deuteriums.

In the tables below, the ZeroOcc column contains the number of atoms modelled with zero occupancy, the AltConf column contains the number of residues with at least one atom in alternate conformation and the Trace column contains the number of residues modelled with at most 2 atoms.

- Molecule 1 is a protein called Tyrosine-protein kinase BTK.

Mol	Chain	Residues	Atoms					ZeroOcc	AltConf	Trace
1	C	256	Total	C	N	O	S	0	4	1
			2115	1361	349	384	21			
1	D	255	Total	C	N	O	S	0	9	1
			2147	1375	354	397	21			

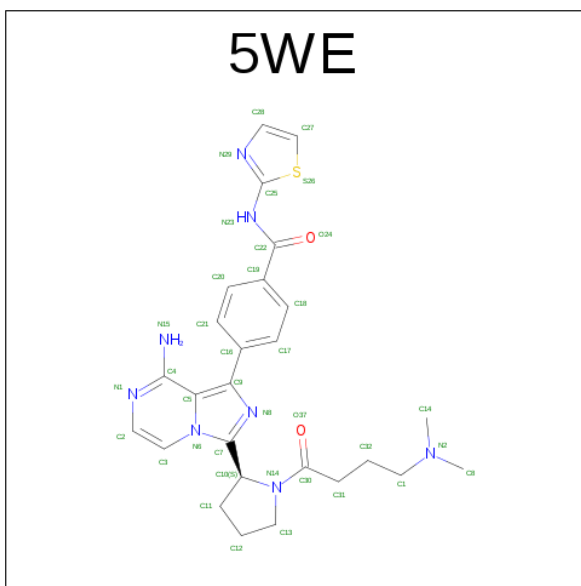
- Molecule 2 is 4-[8-azanyl-3-[(3 {R})-1-(3-methyloxetan-3-yl)carbonylpiperidin-3-yl]imidazo[1,5-a]pyrazin-1-yl]- {N}-[4-(trifluoromethyl)pyridin-2-yl]benzamide (three-letter code: 5WF) (formula: C₂₉H₂₈F₃N₇O₃).



Mol	Chain	Residues	Atoms					ZeroOcc	AltConf
2	C	1	Total	C	F	N	O	0	0
			42	29	3	7	3		
2	D	1	Total	C	F	N	O	0	0
			42	29	3	7	3		

- Molecule 3 is 4-[8-azanyl-3-[(2 {S})-1-[4-(dimethylamino)butanoyl]pyrrolidin-2-yl]imidazo[1,5-a]pyrazin-1-yl]- {N}-(1,3-thiazol-2-yl)benzamide (three-letter code: 5WE) (formula:

C₂₆H₃₀N₈O₂S).

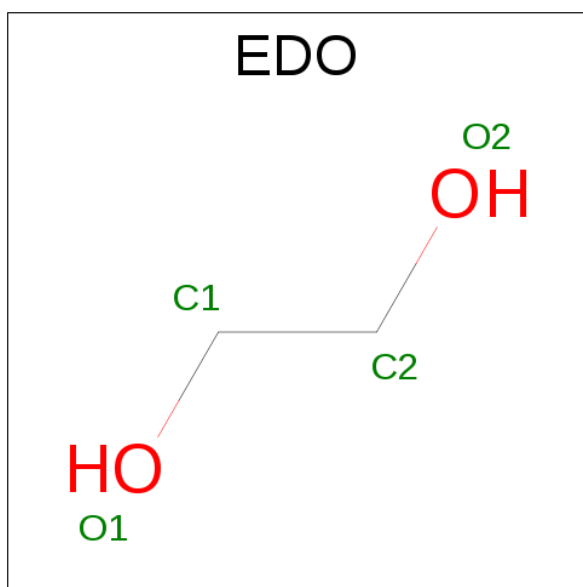


Mol	Chain	Residues	Atoms					ZeroOcc	AltConf
3	C	1	Total	C	N	O	S	0	0
			33	23	7	2	1		
3	D	1	Total	C	N	O	S	0	0
			37	26	8	2	1		
3	D	1	Total	C	N	O	S	0	0
			37	26	8	2	1		
3	D	1	Total	C	N	O	S	0	0
			37	26	8	2	1		

- Molecule 4 is CHLORIDE ION (three-letter code: CL) (formula: Cl).

Mol	Chain	Residues	Atoms		ZeroOcc	AltConf
4	D	1	Total	Cl	0	0
			1	1		
4	C	1	Total	Cl	0	0
			1	1		

- Molecule 5 is 1,2-ETHANEDIOL (three-letter code: EDO) (formula: C₂H₆O₂).



Mol	Chain	Residues	Atoms			ZeroOcc	AltConf
5	D	1	Total	C	O	0	0
			4	2	2		

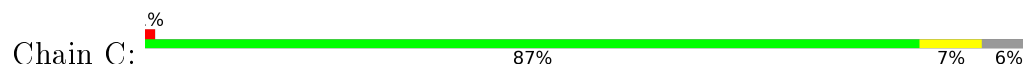
- Molecule 6 is water.

Mol	Chain	Residues	Atoms		ZeroOcc	AltConf
6	C	241	Total	O	0	0
			241	241		
6	D	276	Total	O	0	2
			278	278		

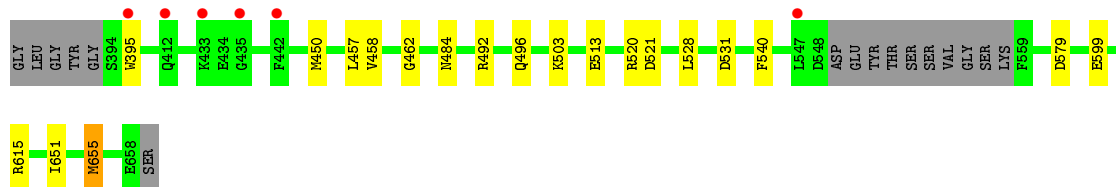
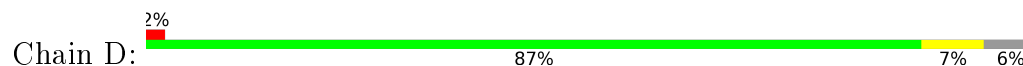
3 Residue-property plots [i](#)

These plots are drawn for all protein, RNA and DNA chains in the entry. The first graphic for a chain summarises the proportions of errors displayed in the second graphic. The second graphic shows the sequence view annotated by issues in geometry and electron density. Residues are color-coded according to the number of geometric quality criteria for which they contain at least one outlier: green = 0, yellow = 1, orange = 2 and red = 3 or more. A red dot above a residue indicates a poor fit to the electron density ($RSRZ > 2$). Stretches of 2 or more consecutive residues without any outlier are shown as a green connector. Residues present in the sample, but not in the model, are shown in grey.

- Molecule 1: Tyrosine-protein kinase BTK



- Molecule 1: Tyrosine-protein kinase BTK



4 Data and refinement statistics

Property	Value	Source
Space group	P 1 21 1	Depositor
Cell constants a, b, c, α , β , γ	38.26 Å 71.47 Å 103.06 Å 90.00° 90.68° 90.00°	Depositor
Resolution (Å)	103.05 – 1.80 35.74 – 1.80	Depositor EDS
% Data completeness (in resolution range)	94.7 (103.05-1.80) 94.7 (35.74-1.80)	Depositor EDS
R_{merge}	0.06	Depositor
R_{sym}	(Not available)	Depositor
$\langle I/\sigma(I) \rangle$ ¹	1.87 (at 1.81 Å)	Xtriage
Refinement program	REFMAC 5.8.0135	Depositor
R, R_{free}	0.179 , 0.226 0.188 , 0.233	Depositor DCC
R_{free} test set	3322 reflections (7.30%)	DCC
Wilson B-factor (Å ²)	20.0	Xtriage
Anisotropy	0.490	Xtriage
Bulk solvent k_{sol} (e/Å ³), B_{sol} (Å ²)	0.31 , 30.2	EDS
Estimated twinning fraction	0.955 for H, K, L 0.045 for -H, -K, L 0.043 for h,-k,-l	Xtriage
Reported twinning fraction	0.955 for H, K, L 0.045 for -H, -K, L	Depositor
L-test for twinning ²	$\langle L \rangle = 0.49$, $\langle L^2 \rangle = 0.32$	Xtriage
Outliers	0 of 48803 reflections	Xtriage
F_o, F_c correlation	0.96	EDS
Total number of atoms	5015	wwPDB-VP
Average B, all atoms (Å ²)	23.0	wwPDB-VP

Xtriage's analysis on translational NCS is as follows: *The largest off-origin peak in the Patterson function is 6.56% of the height of the origin peak. No significant pseudotranslation is detected.*

¹ Intensities estimated from amplitudes.

² Theoretical values of $\langle |L| \rangle$, $\langle L^2 \rangle$ for acentric reflections are 0.5, 0.375 respectively for untwinned datasets, and 0.333, 0.2 for perfectly twinned datasets.

5 Model quality ⓘ

5.1 Standard geometry ⓘ

Bond lengths and bond angles in the following residue types are not validated in this section: CL, 5WF, 5WE, EDO

The Z score for a bond length (or angle) is the number of standard deviations the observed value is removed from the expected value. A bond length (or angle) with $|Z| > 5$ is considered an outlier worth inspection. RMSZ is the root-mean-square of all Z scores of the bond lengths (or angles).

Mol	Chain	Bond lengths		Bond angles	
		RMSZ	$\# Z > 5$	RMSZ	$\# Z > 5$
1	C	0.78	1/2164 (0.0%)	0.92	7/2916 (0.2%)
1	D	0.80	1/2196 (0.0%)	0.92	9/2960 (0.3%)
All	All	0.79	2/4360 (0.0%)	0.92	16/5876 (0.3%)

All (2) bond length outliers are listed below:

Mol	Chain	Res	Type	Atoms	Z	Observed(Å)	Ideal(Å)
1	D	599	GLU	CG-CD	6.48	1.61	1.51
1	C	538	SER	CB-OG	5.02	1.48	1.42

All (16) bond angle outliers are listed below:

Mol	Chain	Res	Type	Atoms	Z	Observed(°)	Ideal(°)
1	D	521[A]	ASP	CB-CG-OD2	7.36	124.92	118.30
1	D	521[B]	ASP	CB-CG-OD2	7.36	124.92	118.30
1	D	492	ARG	NE-CZ-NH1	6.75	123.68	120.30
1	D	615	ARG	NE-CZ-NH2	-6.33	117.13	120.30
1	D	599	GLU	OE1-CD-OE2	-6.20	115.86	123.30
1	D	655	MET	CG-SD-CE	-6.18	90.32	100.20
1	C	492	ARG	NE-CZ-NH1	6.12	123.36	120.30
1	D	531	ASP	CB-CG-OD1	5.63	123.37	118.30
1	D	520	ARG	CG-CD-NE	5.29	122.92	111.80
1	C	601	PHE	CB-CG-CD2	-5.25	117.13	120.80
1	C	525	ARG	NE-CZ-NH2	5.23	122.91	120.30
1	C	539	ASP	CB-CG-OD1	5.17	122.95	118.30
1	C	531	ASP	CB-CG-OD1	5.16	122.94	118.30
1	C	520	ARG	CG-CD-NE	5.12	122.56	111.80
1	D	579	ASP	CB-CG-OD1	5.08	122.87	118.30
1	C	579	ASP	CB-CG-OD1	5.07	122.86	118.30

There are no chirality outliers.

There are no planarity outliers.

5.2 Too-close contacts

In the following table, the Non-H and H(model) columns list the number of non-hydrogen atoms and hydrogen atoms in the chain respectively. The H(added) column lists the number of hydrogen atoms added and optimized by MolProbity. The Clashes column lists the number of clashes within the asymmetric unit, whereas Symm-Clashes lists symmetry related clashes.

Mol	Chain	Non-H	H(model)	H(added)	Clashes	Symm-Clashes
1	C	2115	0	2066	8	0
1	D	2147	0	2078	11	0
2	C	42	0	28	2	0
2	D	42	0	28	1	0
3	C	33	0	20	1	0
3	D	111	0	90	3	0
4	C	1	0	0	0	0
4	D	1	0	0	0	0
5	D	4	0	6	0	0
6	C	241	0	0	2	0
6	D	278	0	0	1	0
All	All	5015	0	4316	24	0

The all-atom clashscore is defined as the number of clashes found per 1000 atoms (including hydrogen atoms). The all-atom clashscore for this structure is 3.

All (24) close contacts within the same asymmetric unit are listed below, sorted by their clash magnitude.

Atom-1	Atom-2	Interatomic distance (Å)	Clash overlap (Å)
1:C:635:HIS:CE1	1:C:640:GLU:OE1	2.31	0.83
1:C:521[B]:ASP:OD2	6:C:802:HOH:O	2.03	0.77
1:D:503:LYS:HD2	1:D:655:MET:HE1	1.77	0.65
1:D:496:GLN:HE22	1:D:655:MET:HG2	1.62	0.64
1:C:635:HIS:NE2	1:C:640:GLU:OE1	2.36	0.57
1:D:651:ILE:HG22	1:D:655:MET:CE	2.36	0.56
3:D:704:5WE:O24	3:D:704:5WE:S26	2.64	0.55
1:D:484[A]:ASN:CG	2:D:702:5WF:O40	2.47	0.53
3:C:702:5WE:S26	3:C:702:5WE:O24	2.68	0.51
1:D:503:LYS:HB2	1:D:655:MET:HE2	1.96	0.48
1:C:422:ARG:NH2	6:C:806:HOH:O	2.46	0.46
1:D:450:MET:HE2	1:D:462:GLY:HA2	1.97	0.46

Continued on next page...

Continued from previous page...

Atom-1	Atom-2	Interatomic distance (Å)	Clash overlap (Å)
3:D:705:5WE:S26	3:D:705:5WE:O24	2.77	0.43
1:D:458:VAL:HG21	1:D:528:LEU:HD12	2.01	0.43
2:C:701:5WF:H26	2:C:701:5WF:O8	2.19	0.43
1:C:449:MET:HE1	2:C:701:5WF:F17	2.10	0.42
1:C:458:VAL:HG21	1:C:528:LEU:HD12	2.00	0.42
1:C:395:TRP:CG	1:C:450:MET:HG3	2.54	0.42
1:D:457:LEU:HD22	1:D:540:PHE:CE2	2.55	0.42
1:D:513:GLU:OE1	6:D:801:HOH:O	2.22	0.41
1:D:503:LYS:HD2	1:D:655:MET:CE	2.46	0.41
1:D:651:ILE:HG22	1:D:655:MET:HE3	2.01	0.41
1:C:457:LEU:HD22	1:C:540:PHE:CE2	2.56	0.41
3:D:704:5WE:C7	3:D:704:5WE:O37	2.70	0.40

There are no symmetry-related clashes.

5.3 Torsion angles ⓘ

5.3.1 Protein backbone ⓘ

In the following table, the Percentiles column shows the percent Ramachandran outliers of the chain as a percentile score with respect to all X-ray entries followed by that with respect to entries of similar resolution.

The Analysed column shows the number of residues for which the backbone conformation was analysed, and the total number of residues.

Mol	Chain	Analysed	Favoured	Allowed	Outliers	Percentiles	
1	C	256/271 (94%)	250 (98%)	5 (2%)	1 (0%)	39	23
1	D	259/271 (96%)	254 (98%)	5 (2%)	0	100	100
All	All	515/542 (95%)	504 (98%)	10 (2%)	1 (0%)	52	35

All (1) Ramachandran outliers are listed below:

Mol	Chain	Res	Type
1	C	558	LYS

5.3.2 Protein sidechains [i](#)

In the following table, the Percentiles column shows the percent sidechain outliers of the chain as a percentile score with respect to all X-ray entries followed by that with respect to entries of similar resolution.

The Analysed column shows the number of residues for which the sidechain conformation was analysed, and the total number of residues.

Mol	Chain	Analysed	Rotameric	Outliers	Percentiles	
1	C	228/243 (94%)	228 (100%)	0	100	100
1	D	234/243 (96%)	233 (100%)	1 (0%)	93	92
All	All	462/486 (95%)	461 (100%)	1 (0%)	95	94

All (1) residues with a non-rotameric sidechain are listed below:

Mol	Chain	Res	Type
1	D	395	TRP

Some sidechains can be flipped to improve hydrogen bonding and reduce clashes. All (3) such sidechains are listed below:

Mol	Chain	Res	Type
1	D	496	GLN
1	D	609	HIS
1	D	635	HIS

5.3.3 RNA [i](#)

There are no RNA molecules in this entry.

5.4 Non-standard residues in protein, DNA, RNA chains [i](#)

There are no non-standard protein/DNA/RNA residues in this entry.

5.5 Carbohydrates [i](#)

There are no carbohydrates in this entry.

5.6 Ligand geometry

Of 9 ligands modelled in this entry, 2 are monoatomic - leaving 7 for Mogul analysis.

In the following table, the Counts columns list the number of bonds (or angles) for which Mogul statistics could be retrieved, the number of bonds (or angles) that are observed in the model and the number of bonds (or angles) that are defined in the chemical component dictionary. The Link column lists molecule types, if any, to which the group is linked. The Z score for a bond length (or angle) is the number of standard deviations the observed value is removed from the expected value. A bond length (or angle) with $|Z| > 2$ is considered an outlier worth inspection. RMSZ is the root-mean-square of all Z scores of the bond lengths (or angles).

Mol	Type	Chain	Res	Link	Bond lengths			Bond angles		
					Counts	RMSZ	# Z > 2	Counts	RMSZ	# Z > 2
2	5WF	C	701	-	43,47,47	1.32	4 (9%)	54,71,71	2.53	13 (24%)
3	5WE	C	702	-	31,37,41	0.98	2 (6%)	31,53,58	1.64	5 (16%)
2	5WF	D	702	-	43,47,47	1.24	5 (11%)	54,71,71	2.37	8 (14%)
3	5WE	D	703	-	35,41,41	1.06	2 (5%)	37,58,58	1.54	9 (24%)
3	5WE	D	704	-	35,41,41	0.80	0	37,58,58	1.32	5 (13%)
3	5WE	D	705	-	35,41,41	1.02	1 (2%)	37,58,58	1.24	5 (13%)
5	EDO	D	706	-	3,3,3	0.49	0	2,2,2	0.48	0

In the following table, the Chirals column lists the number of chiral outliers, the number of chiral centers analysed, the number of these observed in the model and the number defined in the chemical component dictionary. Similar counts are reported in the Torsion and Rings columns. '-' means no outliers of that kind were identified.

Mol	Type	Chain	Res	Link	Chirals	Torsions	Rings
2	5WF	C	701	-	-	0/26/50/50	0/6/6/6
3	5WE	C	702	-	-	0/16/32/36	0/5/5/5
2	5WF	D	702	-	-	0/26/50/50	0/6/6/6
3	5WE	D	703	-	-	0/20/36/36	0/5/5/5
3	5WE	D	704	-	-	0/20/36/36	0/5/5/5
3	5WE	D	705	-	-	0/20/36/36	0/5/5/5
5	EDO	D	706	-	-	0/1/1/1	0/0/0/0

All (14) bond length outliers are listed below:

Mol	Chain	Res	Type	Atoms	Z	Observed(Å)	Ideal(Å)
2	D	702	5WF	C3-C24	-3.05	1.45	1.49
3	D	703	5WE	C7-N8	-2.47	1.30	1.34
3	C	702	5WE	C7-N8	-2.24	1.30	1.34
2	D	702	5WF	C27-N28	-2.23	1.30	1.34
2	D	702	5WF	O8-C7	-2.16	1.18	1.23

Continued on next page...

Continued from previous page...

Mol	Chain	Res	Type	Atoms	Z	Observed(Å)	Ideal(Å)
2	C	701	5WF	C33-N34	2.06	1.50	1.47
2	D	702	5WF	C41-C37	2.08	1.57	1.54
3	C	702	5WE	C25-N23	2.12	1.40	1.36
2	C	701	5WF	C41-C37	2.19	1.57	1.54
3	D	705	5WE	C25-N23	2.51	1.40	1.36
2	D	702	5WF	O40-C41	2.71	1.49	1.45
2	C	701	5WF	C35-N34	2.78	1.50	1.46
3	D	703	5WE	C25-N23	3.31	1.42	1.36
2	C	701	5WF	C36-N34	4.76	1.43	1.35

All (45) bond angle outliers are listed below:

Mol	Chain	Res	Type	Atoms	Z	Observed(°)	Ideal(°)
2	D	702	5WF	O40-C41-C37	-8.76	87.69	91.86
2	C	701	5WF	O40-C41-C37	-8.44	87.84	91.86
2	C	701	5WF	O40-C39-C37	-8.20	87.96	91.86
2	D	702	5WF	C42-C37-C39	-7.48	107.76	115.69
2	C	701	5WF	C42-C37-C39	-7.47	107.78	115.69
2	D	702	5WF	O40-C39-C37	-6.69	88.68	91.86
2	C	701	5WF	O38-C36-C37	-4.54	111.36	119.69
2	C	701	5WF	C31-C32-C33	-3.99	105.51	110.94
2	D	702	5WF	C13-C14-C15	-3.64	120.59	122.77
2	C	701	5WF	C13-C14-C15	-3.53	120.66	122.77
3	D	704	5WE	O37-C30-N14	-3.34	116.42	121.55
3	C	702	5WE	O24-C22-C19	-3.06	115.71	120.95
2	C	701	5WF	C32-C33-N34	-3.04	104.39	110.68
3	D	703	5WE	C21-C16-C9	-2.94	116.18	120.72
2	D	702	5WF	O8-C7-C6	-2.78	116.19	120.95
3	D	703	5WE	O37-C30-N14	-2.64	117.50	121.55
2	C	701	5WF	C2-C1-C6	-2.51	117.80	120.76
3	D	704	5WE	C13-N14-C10	-2.25	108.61	112.00
3	C	702	5WE	O37-C30-N14	-2.25	118.09	121.55
3	C	702	5WE	C13-N14-C10	-2.24	108.63	112.00
3	D	705	5WE	O37-C30-N14	-2.22	118.14	121.55
2	D	702	5WF	C31-C32-C33	-2.16	108.00	110.94
2	C	701	5WF	F18-C16-C13	-2.12	108.45	112.92
3	D	705	5WE	C21-C16-C9	-2.09	117.49	120.72
3	D	703	5WE	O24-C22-N23	-2.08	119.03	123.68
3	D	703	5WE	O24-C22-C19	-2.05	117.44	120.95
3	D	705	5WE	O24-C22-C19	-2.02	117.49	120.95
3	D	703	5WE	C31-C30-N14	2.01	124.26	118.27
2	C	701	5WF	C25-C23-N20	2.11	121.43	117.83

Continued on next page...

Continued from previous page...

Mol	Chain	Res	Type	Atoms	Z	Observed(°)	Ideal(°)
3	D	703	5WE	C12-C13-N14	2.18	106.65	103.24
3	D	703	5WE	C2-N1-C4	2.18	121.23	117.57
3	D	705	5WE	C2-N1-C4	2.25	121.35	117.57
3	D	704	5WE	C32-C31-C30	2.27	120.26	112.99
3	D	705	5WE	C19-C22-N23	2.42	120.93	115.96
3	D	704	5WE	C2-N1-C4	2.48	121.74	117.57
2	C	701	5WF	C12-C13-C16	2.68	123.97	119.99
3	D	704	5WE	C19-C22-N23	2.72	121.54	115.96
3	D	703	5WE	C17-C16-C9	3.21	125.68	120.72
3	D	703	5WE	C19-C22-N23	3.69	123.53	115.96
3	C	702	5WE	C19-C22-N23	3.78	123.73	115.96
2	C	701	5WF	C41-C37-C39	3.93	87.39	85.25
2	D	702	5WF	C41-O40-C39	4.08	94.98	91.16
2	C	701	5WF	C41-O40-C39	4.47	95.35	91.16
3	C	702	5WE	C32-C31-C30	4.51	121.61	112.72
2	D	702	5WF	C41-C37-C39	6.23	88.63	85.25

There are no chirality outliers.

There are no torsion outliers.

There are no ring outliers.

5 monomers are involved in 7 short contacts:

Mol	Chain	Res	Type	Clashes	Symm-Clashes
2	C	701	5WF	2	0
3	C	702	5WE	1	0
2	D	702	5WF	1	0
3	D	704	5WE	2	0
3	D	705	5WE	1	0

5.7 Other polymers [i](#)

There are no such residues in this entry.

5.8 Polymer linkage issues [i](#)

There are no chain breaks in this entry.

6 Fit of model and data [i](#)

6.1 Protein, DNA and RNA chains [i](#)

In the following table, the column labelled ‘#RSRZ> 2’ contains the number (and percentage) of RSRZ outliers, followed by percent RSRZ outliers for the chain as percentile scores relative to all X-ray entries and entries of similar resolution. The OWAB column contains the minimum, median, 95th percentile and maximum values of the occupancy-weighted average B-factor per residue. The column labelled ‘Q< 0.9’ lists the number of (and percentage) of residues with an average occupancy less than 0.9.

Mol	Chain	Analysed	<RSRZ>	#RSRZ>2	OWAB(Å ²)	Q<0.9
1	C	256/271 (94%)	-0.07	3 (1%) 81 78	12, 21, 37, 58	0
1	D	255/271 (94%)	0.07	6 (2%) 62 57	11, 20, 44, 66	1 (0%)
All	All	511/542 (94%)	0.00	9 (1%) 71 67	11, 20, 41, 66	1 (0%)

All (9) RSRZ outliers are listed below:

Mol	Chain	Res	Type	RSRZ
1	C	395	TRP	5.6
1	D	395	TRP	4.6
1	C	557	SER	4.3
1	D	442	PHE	2.8
1	D	433	LYS	2.7
1	D	435	GLY	2.3
1	D	412[B]	GLN	2.2
1	D	547	LEU	2.1
1	C	442	PHE	2.0

6.2 Non-standard residues in protein, DNA, RNA chains [i](#)

There are no non-standard protein/DNA/RNA residues in this entry.

6.3 Carbohydrates [i](#)

There are no carbohydrates in this entry.

6.4 Ligands [i](#)

In the following table, the Atoms column lists the number of modelled atoms in the group and the number defined in the chemical component dictionary. LLDF column lists the quality of electron

density of the group with respect to its neighbouring residues in protein, DNA or RNA chains. The B-factors column lists the minimum, median, 95th percentile and maximum values of B factors of atoms in the group. The column labelled 'Q< 0.9' lists the number of atoms with occupancy less than 0.9.

Mol	Type	Chain	Res	Atoms	RSCC	RSR	LLDF	B-factors(Å ²)	Q<0.9
5	EDO	D	706	4/4	0.86	0.13	3.66	30,31,35,38	0
3	5WE	D	703	37/37	0.88	0.14	0.74	30,34,53,55	0
3	5WE	C	702	33/37	0.91	0.12	0.74	27,31,35,38	0
3	5WE	D	705	37/37	0.92	0.12	0.25	19,22,36,37	0
2	5WF	C	701	42/42	0.92	0.11	0.03	15,19,28,29	0
2	5WF	D	702	42/42	0.94	0.10	-0.22	15,20,28,31	0
3	5WE	D	704	37/37	0.94	0.10	-0.44	20,22,35,38	0
4	CL	C	703	1/1	0.98	0.07	-1.30	31,31,31,31	0
4	CL	D	701	1/1	0.99	0.06	-	21,21,21,21	0

6.5 Other polymers ⓘ

There are no such residues in this entry.