



Full wwPDB X-ray Structure Validation Report ⓘ

Mar 21, 2016 – 02:33 PM EDT

PDB ID : 5FC6
Title : Murine SMPDL3A in complex with ADP analog AMPCP
Authors : Gorelik, A.; Illes, K.; Superti-Furga, G.; Nagar, B.
Deposited on : 2015-12-15
Resolution : 1.66 Å(reported)

This is a Full wwPDB X-ray Structure Validation Report for a publicly released PDB entry.
We welcome your comments at validation@mail.wwpdb.org
A user guide is available at
<http://wwpdb.org/validation/2016/XrayValidationReportHelp>
with specific help available everywhere you see the ⓘ symbol.

The following versions of software and data (see [references ⓘ](#)) were used in the production of this report:

MolProbity : 4.02b-467
Mogul : 1.7.1 (RC1), CSD as537be (2016)
Xtriage (Phenix) : 1.9-1692
EDS : rb-20027107
Percentile statistics : 20151230.v01 (using entries in the PDB archive December 30th 2015)
Refmac : 5.8.0122
CCP4 : 6.5.0
Ideal geometry (proteins) : Engh & Huber (2001)
Ideal geometry (DNA, RNA) : Parkinson et al. (1996)
Validation Pipeline (wwPDB-VP) : rb-20027107

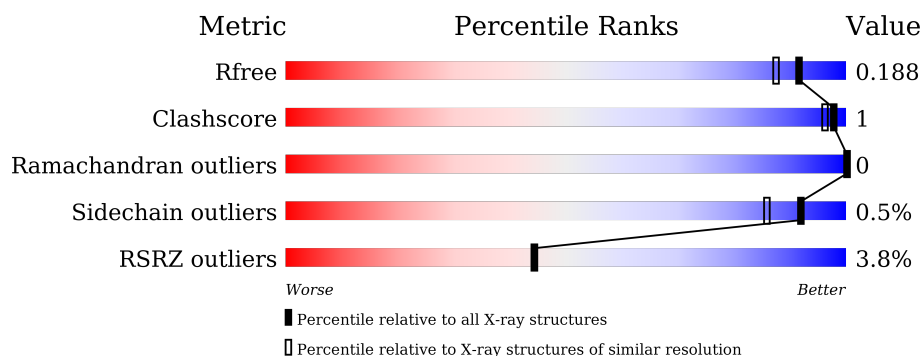
1 Overall quality at a glance

The following experimental techniques were used to determine the structure:

X-RAY DIFFRACTION

The reported resolution of this entry is 1.66 Å.

Percentile scores (ranging between 0-100) for global validation metrics of the entry are shown in the following graphic. The table shows the number of entries on which the scores are based.



Metric	Whole archive (#Entries)	Similar resolution (#Entries, resolution range(Å))
R_{free}	91344	1226 (1.66-1.66)
Clashscore	102246	1323 (1.66-1.66)
Ramachandran outliers	100387	1295 (1.66-1.66)
Sidechain outliers	100360	1295 (1.66-1.66)
RSRZ outliers	91569	1227 (1.66-1.66)

The table below summarises the geometric issues observed across the polymeric chains and their fit to the electron density. The red, orange, yellow and green segments on the lower bar indicate the fraction of residues that contain outliers for ≥ 3 , 2, 1 and 0 types of geometric quality criteria. A grey segment represents the fraction of residues that are not modelled. The numeric value for each fraction is indicated below the corresponding segment, with a dot representing fractions $\leq 5\%$. The upper red bar (where present) indicates the fraction of residues that have poor fit to the electron density. The numeric value is given above the bar.

Mol	Chain	Length	Quality of chain
1	A	433	<div> <div>4%</div> <div>95%</div> <div>..</div> </div>

The following table lists non-polymeric compounds, carbohydrate monomers and non-standard residues in protein, DNA, RNA chains that are outliers for geometric or electron-density-fit criteria:

Mol	Type	Chain	Res	Chirality	Geometry	Clashes	Electron density
3	NAG	A	514	-	-	-	X
4	FUC	A	513	-	-	-	X

Continued on next page...

Continued from previous page...

Mol	Type	Chain	Res	Chirality	Geometry	Clashes	Electron density
7	GOL	A	516	-	-	-	X
7	GOL	A	517	-	-	-	X
7	GOL	A	518	-	-	-	X
7	GOL	A	519	-	-	-	X
8	AP2	A	520	-	-	-	X

2 Entry composition

There are 9 unique types of molecules in this entry. The entry contains 7807 atoms, of which 3599 are hydrogens and 0 are deuteriums.

In the tables below, the ZeroOcc column contains the number of atoms modelled with zero occupancy, the AltConf column contains the number of residues with at least one atom in alternate conformation and the Trace column contains the number of residues modelled with at most 2 atoms.

- Molecule 1 is a protein called Acid sphingomyelinase-like phosphodiesterase 3a.

Mol	Chain	Residues	Atoms						ZeroOcc	AltConf	Trace
1	A	426	Total	C	H	N	O	S	0	18	0
			6867	2244	3397	562	645	19			

There are 10 discrepancies between the modelled and reference sequences:

Chain	Residue	Modelled	Actual	Comment	Reference
A	13	ASP	-	expression tag	UNP P70158
A	14	ARG	-	expression tag	UNP P70158
A	15	HIS	-	expression tag	UNP P70158
A	16	HIS	-	expression tag	UNP P70158
A	17	HIS	-	expression tag	UNP P70158
A	18	HIS	-	expression tag	UNP P70158
A	19	HIS	-	expression tag	UNP P70158
A	20	HIS	-	expression tag	UNP P70158
A	21	LYS	-	expression tag	UNP P70158
A	22	LEU	-	expression tag	UNP P70158

- Molecule 2 is ZINC ION (three-letter code: ZN) (formula: Zn).

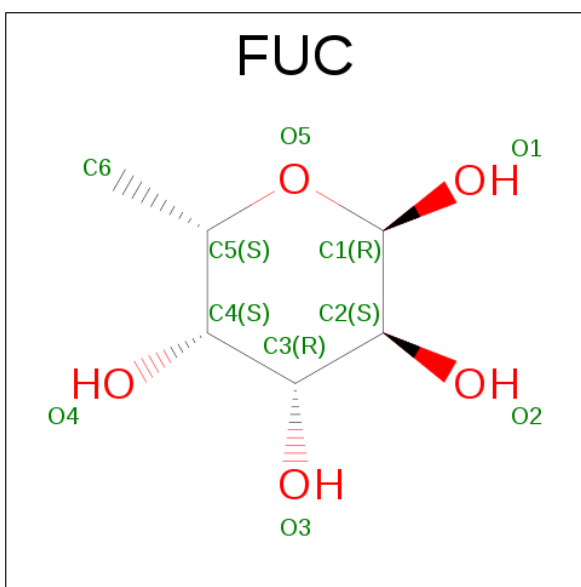
Mol	Chain	Residues	Atoms		ZeroOcc	AltConf
2	A	2	Total	Zn	0	0
			2	2		

- Molecule 3 is N-ACETYL-D-GLUCOSAMINE (three-letter code: NAG) (formula: C₈H₁₅NO₆).



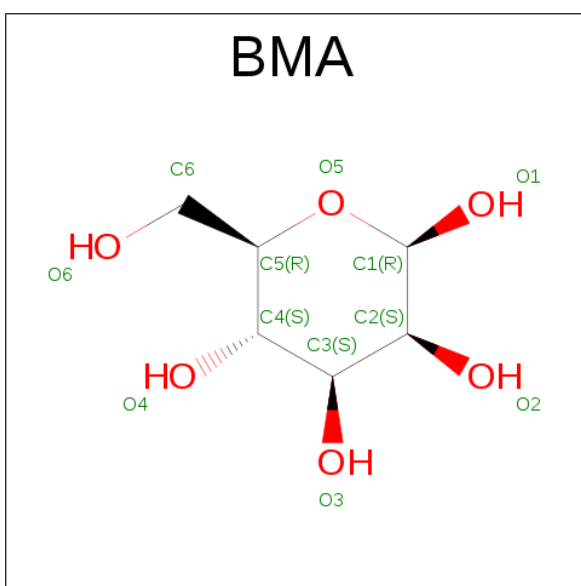
Mol	Chain	Residues	Atoms					ZeroOcc	AltConf
3	A	1	Total	C	H	N	O	0	0
			26	8	12	1	5		
3	A	1	Total	C	H	N	O	0	0
			28	8	14	1	5		
3	A	1	Total	C	H	N	O	0	0
			26	8	12	1	5		
3	A	1	Total	C	H	N	O	0	0
			28	8	14	1	5		
3	A	1	Total	C	H	N	O	0	0
			27	8	13	1	5		
3	A	1	Total	C	H	N	O	0	0
			27	8	13	1	5		
3	A	1	Total	C	H	N	O	0	0
			26	8	12	1	5		
3	A	1	Total	C	H	N	O	0	0
			28	8	14	1	5		

- Molecule 4 is ALPHA-L-FUCOSE (three-letter code: FUC) (formula: C₆H₁₂O₅).



Mol	Chain	Residues	Atoms				ZeroOcc	AltConf
4	A	1	Total	C	H	O	0	0
			21	6	11	4		
4	A	1	Total	C	H	O	0	0
			21	6	11	4		

- Molecule 5 is BETA-D-MANNOSE (three-letter code: BMA) (formula: $C_6H_{12}O_6$).



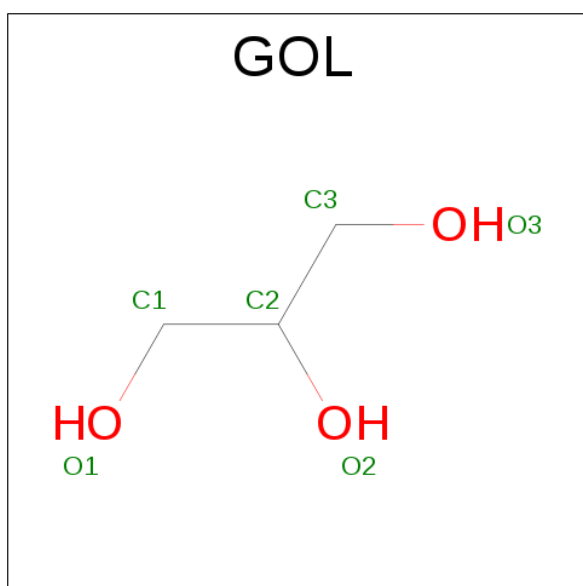
Mol	Chain	Residues	Atoms				ZeroOcc	AltConf
5	A	1	Total	C	H	O	0	0
			20	6	9	5		

- Molecule 6 is ALPHA-D-MANNOSE (three-letter code: MAN) (formula: $C_6H_{12}O_6$).



Mol	Chain	Residues	Atoms				ZeroOcc	AltConf
6	A	1	Total	C	H	O	0	0
			22	6	11	5		
6	A	1	Total	C	H	O	0	0
			22	6	11	5		

- Molecule 7 is GLYCEROL (three-letter code: GOL) (formula: $C_3H_8O_3$).



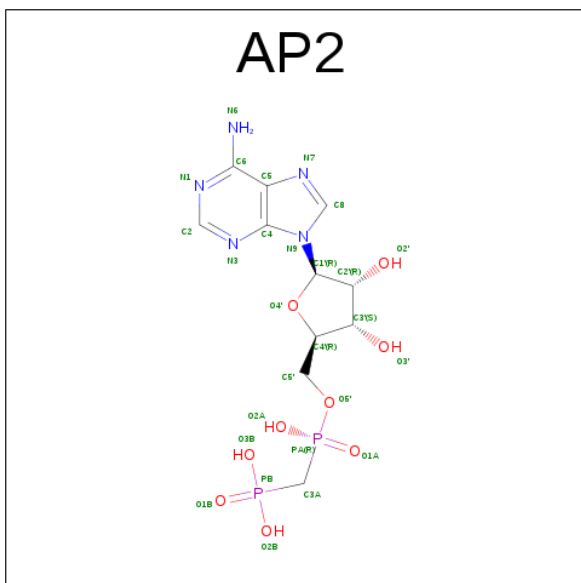
Mol	Chain	Residues	Atoms				ZeroOcc	AltConf
7	A	1	Total	C	H	O	0	0
			14	3	8	3		
7	A	1	Total	C	H	O	0	0
			14	3	8	3		

Continued on next page...

Continued from previous page...

Mol	Chain	Residues	Atoms				ZeroOcc	AltConf
7	A	1	Total	C	H	O	0	0
			14	3	8	3		
7	A	1	Total	C	H	O	0	0
			13	3	7	3		

- Molecule 8 is PHOSPHOMETHYLPHOSPHONIC ACID ADENOSYL ESTER (three-letter code: AP2) (formula: $C_{11}H_{17}N_5O_9P_2$).



Mol	Chain	Residues	Atoms					ZeroOcc	AltConf	
8	A	1	Total	C	H	N	O	P	0	0
			41	11	14	5	9	2		

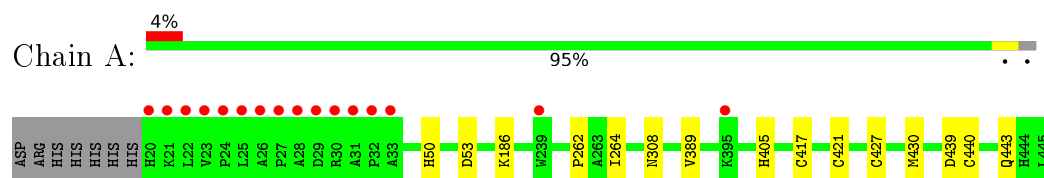
- Molecule 9 is water.

Mol	Chain	Residues	Atoms		ZeroOcc	AltConf
9	A	520	Total	O	0	0
			520	520		

3 Residue-property plots [i](#)

These plots are drawn for all protein, RNA and DNA chains in the entry. The first graphic for a chain summarises the proportions of errors displayed in the second graphic. The second graphic shows the sequence view annotated by issues in geometry and electron density. Residues are color-coded according to the number of geometric quality criteria for which they contain at least one outlier: green = 0, yellow = 1, orange = 2 and red = 3 or more. A red dot above a residue indicates a poor fit to the electron density ($RSRZ > 2$). Stretches of 2 or more consecutive residues without any outlier are shown as a green connector. Residues present in the sample, but not in the model, are shown in grey.

- Molecule 1: Acid sphingomyelinase-like phosphodiesterase 3a



4 Data and refinement statistics

Property	Value	Source
Space group	C 2 2 21	Depositor
Cell constants a, b, c, α , β , γ	124.35Å 132.89Å 80.52Å 90.00° 90.00° 90.00°	Depositor
Resolution (Å)	45.40 – 1.66 45.40 – 1.66	Depositor EDS
% Data completeness (in resolution range)	99.2 (45.40-1.66) 90.6 (45.40-1.66)	Depositor EDS
R_{merge}	(Not available)	Depositor
R_{sym}	(Not available)	Depositor
$\langle I/\sigma(I) \rangle$ ¹	1.57 (at 1.66Å)	Xtriage
Refinement program	PHENIX (1.10.1 _2155: ???)	Depositor
R, R_{free}	0.161 , 0.191 0.159 , 0.188	Depositor DCC
R_{free} test set	3561 reflections (4.97%)	DCC
Wilson B-factor (Å ²)	19.1	Xtriage
Anisotropy	0.188	Xtriage
Bulk solvent k_{sol} (e/Å ³), B_{sol} (Å ²)	0.39 , 44.1	EDS
Estimated twinning fraction	No twinning to report.	Xtriage
L-test for twinning ²	$\langle L \rangle = 0.49$, $\langle L^2 \rangle = 0.32$	Xtriage
Outliers	0 of 78590 reflections	Xtriage
F_o, F_c correlation	0.97	EDS
Total number of atoms	7807	wwPDB-VP
Average B, all atoms (Å ²)	34.0	wwPDB-VP

Xtriage's analysis on translational NCS is as follows: *The largest off-origin peak in the Patterson function is 3.96% of the height of the origin peak. No significant pseudotranslation is detected.*

¹Intensities estimated from amplitudes.

²Theoretical values of $\langle |L| \rangle$, $\langle L^2 \rangle$ for acentric reflections are 0.5, 0.375 respectively for untwinned datasets, and 0.333, 0.2 for perfectly twinned datasets.

5 Model quality [i](#)

5.1 Standard geometry [i](#)

Bond lengths and bond angles in the following residue types are not validated in this section: GOL, ZN, BMA, NAG, AP2, FUC, MAN

The Z score for a bond length (or angle) is the number of standard deviations the observed value is removed from the expected value. A bond length (or angle) with $|Z| > 5$ is considered an outlier worth inspection. RMSZ is the root-mean-square of all Z scores of the bond lengths (or angles).

Mol	Chain	Bond lengths		Bond angles	
		RMSZ	$\# Z > 5$	RMSZ	$\# Z > 5$
1	A	0.50	0/3623	0.61	0/4945

There are no bond length outliers.

There are no bond angle outliers.

There are no chirality outliers.

There are no planarity outliers.

5.2 Too-close contacts [i](#)

In the following table, the Non-H and H(model) columns list the number of non-hydrogen atoms and hydrogen atoms in the chain respectively. The H(added) column lists the number of hydrogen atoms added and optimized by MolProbity. The Clashes column lists the number of clashes within the asymmetric unit, whereas Symm-Clashes lists symmetry related clashes.

Mol	Chain	Non-H	H(model)	H(added)	Clashes	Symm-Clashes
1	A	3470	3397	3433	8	0
2	A	2	0	0	0	0
3	A	112	104	97	0	0
4	A	20	22	20	0	0
5	A	11	9	8	0	0
6	A	22	22	20	0	0
7	A	24	31	32	0	0
8	A	27	14	14	0	0
9	A	520	0	0	3	0
All	All	4208	3599	3624	8	0

The all-atom clashscore is defined as the number of clashes found per 1000 atoms (including hydrogen atoms). The all-atom clashscore for this structure is 1.

All (8) close contacts within the same asymmetric unit are listed below, sorted by their clash magnitude.

Atom-1	Atom-2	Interatomic distance (Å)	Clash overlap (Å)
1:A:53:ASP:O	9:A:601:HOH:O	2.12	0.67
1:A:427[B]:CYS:SG	1:A:440:CYS:HB3	2.41	0.61
1:A:439[B]:ASP:OD2	1:A:443:GLN:NE2	2.43	0.48
1:A:405[A]:HIS:CD2	9:A:605:HOH:O	2.66	0.48
1:A:417:CYS:SG	1:A:421[B]:CYS:SG	3.11	0.47
1:A:186:LYS:HE2	9:A:1043:HOH:O	2.19	0.42
1:A:262:PRO:HB2	1:A:264:ILE:O	2.21	0.41
1:A:389[B]:VAL:CG2	1:A:430[B]:MET:SD	3.10	0.40

There are no symmetry-related clashes.

5.3 Torsion angles [i](#)

5.3.1 Protein backbone [i](#)

In the following table, the Percentiles column shows the percent Ramachandran outliers of the chain as a percentile score with respect to all X-ray entries followed by that with respect to entries of similar resolution.

The Analysed column shows the number of residues for which the backbone conformation was analysed, and the total number of residues.

Mol	Chain	Analysed	Favoured	Allowed	Outliers	Percentiles	
1	A	442/433 (102%)	424 (96%)	18 (4%)	0	100	100

There are no Ramachandran outliers to report.

5.3.2 Protein sidechains [i](#)

In the following table, the Percentiles column shows the percent sidechain outliers of the chain as a percentile score with respect to all X-ray entries followed by that with respect to entries of similar resolution.

The Analysed column shows the number of residues for which the sidechain conformation was analysed, and the total number of residues.

Mol	Chain	Analysed	Rotameric	Outliers	Percentiles	
1	A	395/384 (103%)	393 (100%)	2 (0%)	92	86

All (2) residues with a non-rotameric sidechain are listed below:

Mol	Chain	Res	Type
1	A	50	HIS
1	A	308	ASN

Some sidechains can be flipped to improve hydrogen bonding and reduce clashes. All (1) such sidechains are listed below:

Mol	Chain	Res	Type
1	A	50	HIS

5.3.3 RNA ⓘ

There are no RNA molecules in this entry.

5.4 Non-standard residues in protein, DNA, RNA chains ⓘ

There are no non-standard protein/DNA/RNA residues in this entry.

5.5 Carbohydrates ⓘ

There are no carbohydrates in this entry.

5.6 Ligand geometry ⓘ

Of 20 ligands modelled in this entry, 2 are monoatomic - leaving 18 for Mogul analysis.

In the following table, the Counts columns list the number of bonds (or angles) for which Mogul statistics could be retrieved, the number of bonds (or angles) that are observed in the model and the number of bonds (or angles) that are defined in the chemical component dictionary. The Link column lists molecule types, if any, to which the group is linked. The Z score for a bond length (or angle) is the number of standard deviations the observed value is removed from the expected value. A bond length (or angle) with $|Z| > 2$ is considered an outlier worth inspection. RMSZ is the root-mean-square of all Z scores of the bond lengths (or angles).

Mol	Type	Chain	Res	Link	Bond lengths			Bond angles		
					Counts	RMSZ	$\# Z > 2$	Counts	RMSZ	$\# Z > 2$
3	NAG	A	503	1,3,4	14,14,15	0.78	1 (7%)	15,19,21	0.88	1 (6%)
4	FUC	A	504	3	10,10,11	1.15	1 (10%)	13,14,16	1.62	2 (15%)
3	NAG	A	505	3	14,14,15	0.93	1 (7%)	15,19,21	1.89	3 (20%)
3	NAG	A	506	1,3	14,14,15	0.37	0	15,19,21	0.65	0

Mol	Type	Chain	Res	Link	Bond lengths			Bond angles		
					Counts	RMSZ	# Z > 2	Counts	RMSZ	# Z > 2
3	NAG	A	507	3	14,14,15	0.52	0	15,19,21	1.22	2 (13%)
5	BMA	A	508	3,6	11,11,12	0.90	0	15,15,17	0.86	0
6	MAN	A	509	5	11,11,12	0.98	0	15,15,17	1.79	2 (13%)
6	MAN	A	510	5	11,11,12	1.60	3 (27%)	15,15,17	2.19	4 (26%)
3	NAG	A	511	1,3	14,14,15	0.39	0	15,19,21	0.56	0
3	NAG	A	512	3,5	14,14,15	0.48	0	15,19,21	0.35	0
4	FUC	A	513	3	10,10,11	1.28	2 (20%)	13,14,16	1.47	3 (23%)
3	NAG	A	514	1,3,4	14,14,15	0.93	1 (7%)	15,19,21	0.32	0
3	NAG	A	515	3	14,14,15	0.18	0	15,19,21	0.50	0
7	GOL	A	516	-	5,5,5	0.23	0	5,5,5	0.34	0
7	GOL	A	517	-	5,5,5	0.29	0	5,5,5	0.55	0
7	GOL	A	518	-	5,5,5	0.37	0	5,5,5	0.20	0
7	GOL	A	519	-	5,5,5	0.31	0	5,5,5	0.43	0
8	AP2	A	520	2	26,29,29	4.06	11 (42%)	29,45,45	2.22	6 (20%)

In the following table, the Chirals column lists the number of chiral outliers, the number of chiral centers analysed, the number of these observed in the model and the number defined in the chemical component dictionary. Similar counts are reported in the Torsion and Rings columns. '-' means no outliers of that kind were identified.

Mol	Type	Chain	Res	Link	Chirals	Torsions	Rings
3	NAG	A	503	1,3,4	-	0/6/23/26	0/1/1/1
4	FUC	A	504	3	-	0/0/17/20	0/1/1/1
3	NAG	A	505	3	-	0/6/23/26	0/1/1/1
3	NAG	A	506	1,3	-	0/6/23/26	0/1/1/1
3	NAG	A	507	3	-	0/6/23/26	0/1/1/1
5	BMA	A	508	3,6	-	0/2/19/22	0/1/1/1
6	MAN	A	509	5	-	0/2/19/22	0/1/1/1
6	MAN	A	510	5	-	0/2/19/22	0/1/1/1
3	NAG	A	511	1,3	-	0/6/23/26	0/1/1/1
3	NAG	A	512	3,5	-	0/6/23/26	0/1/1/1
4	FUC	A	513	3	-	0/0/17/20	0/1/1/1
3	NAG	A	514	1,3,4	-	0/6/23/26	0/1/1/1
3	NAG	A	515	3	-	0/6/23/26	0/1/1/1
7	GOL	A	516	-	-	0/4/4/4	0/0/0/0
7	GOL	A	517	-	-	0/4/4/4	0/0/0/0
7	GOL	A	518	-	-	0/4/4/4	0/0/0/0
7	GOL	A	519	-	-	0/4/4/4	0/0/0/0
8	AP2	A	520	2	-	0/12/32/32	0/3/3/3

All (20) bond length outliers are listed below:

Mol	Chain	Res	Type	Atoms	Z	Observed(Å)	Ideal(Å)
8	A	520	AP2	C2'-C3'	-9.23	1.28	1.53
8	A	520	AP2	O4'-C4'	-6.62	1.29	1.45
3	A	514	NAG	O5-C1	-3.24	1.38	1.43
3	A	503	NAG	O5-C1	-2.68	1.39	1.43
3	A	505	NAG	C1-C2	-2.63	1.48	1.52
8	A	520	AP2	PB-O2B	-2.03	1.49	1.54
4	A	513	FUC	C1-C2	2.07	1.57	1.52
4	A	513	FUC	C6-C5	2.12	1.56	1.51
6	A	510	MAN	C2-C3	2.19	1.55	1.52
6	A	510	MAN	O5-C1	2.36	1.47	1.43
8	A	520	AP2	C2'-C1'	2.76	1.58	1.53
8	A	520	AP2	PB-C3A	2.93	1.83	1.80
4	A	504	FUC	C1-C2	3.02	1.59	1.52
8	A	520	AP2	C6-N6	3.10	1.46	1.34
8	A	520	AP2	O2'-C2'	3.22	1.50	1.43
6	A	510	MAN	C1-C2	3.96	1.61	1.52
8	A	520	AP2	PA-C3A	4.85	1.85	1.80
8	A	520	AP2	C3'-C4'	5.73	1.68	1.53
8	A	520	AP2	PA-O5'	7.35	1.65	1.57
8	A	520	AP2	O4'-C1'	11.60	1.57	1.41

All (23) bond angle outliers are listed below:

Mol	Chain	Res	Type	Atoms	Z	Observed(°)	Ideal(°)
8	A	520	AP2	N3-C2-N1	-9.05	121.76	128.87
8	A	520	AP2	O5'-PA-O1A	-2.65	106.72	114.05
8	A	520	AP2	O3B-PB-O1B	-2.47	105.66	112.32
6	A	510	MAN	O2-C2-C3	-2.15	105.85	110.19
4	A	513	FUC	O5-C5-C6	2.11	110.07	106.28
8	A	520	AP2	C2'-C3'-C4'	2.28	107.29	102.64
6	A	509	MAN	O5-C5-C4	2.30	113.95	110.13
4	A	513	FUC	C3-C4-C5	2.33	113.14	109.66
6	A	510	MAN	O5-C1-C2	2.36	114.67	110.89
3	A	503	NAG	C1-O5-C5	2.41	115.68	112.14
4	A	504	FUC	O5-C1-C2	2.67	115.17	110.89
3	A	507	NAG	O5-C5-C4	2.68	114.57	110.13
4	A	513	FUC	C1-C2-C3	2.75	112.88	109.55
3	A	507	NAG	C3-C4-C5	2.89	115.37	110.23
8	A	520	AP2	C1'-N9-C4	2.89	130.03	126.81
3	A	505	NAG	C3-C4-C5	3.93	117.24	110.23
8	A	520	AP2	O2A-PA-O5'	3.96	116.72	106.69
3	A	505	NAG	C1-O5-C5	4.05	118.09	112.14
6	A	510	MAN	C1-C2-C3	4.18	114.61	109.55

Continued on next page...

Continued from previous page...

Mol	Chain	Res	Type	Atoms	Z	Observed(°)	Ideal(°)
3	A	505	NAG	O5-C5-C4	4.31	117.28	110.13
4	A	504	FUC	C1-C2-C3	4.53	115.05	109.55
6	A	509	MAN	C1-O5-C5	5.69	120.50	112.14
6	A	510	MAN	C1-O5-C5	6.31	121.41	112.14

There are no chirality outliers.

There are no torsion outliers.

There are no ring outliers.

No monomer is involved in short contacts.

5.7 Other polymers [i](#)

There are no such residues in this entry.

5.8 Polymer linkage issues [i](#)

There are no chain breaks in this entry.

6 Fit of model and data [i](#)

6.1 Protein, DNA and RNA chains [i](#)

In the following table, the column labelled ‘#RSRZ> 2’ contains the number (and percentage) of RSRZ outliers, followed by percent RSRZ outliers for the chain as percentile scores relative to all X-ray entries and entries of similar resolution. The OWAB column contains the minimum, median, 95th percentile and maximum values of the occupancy-weighted average B-factor per residue. The column labelled ‘Q< 0.9’ lists the number of (and percentage) of residues with an average occupancy less than 0.9.

Mol	Chain	Analysed	<RSRZ>	#RSRZ>2	OWAB(Å ²)	Q<0.9
1	A	426/433 (98%)	-0.17	16 (3%) 44 44	14, 25, 47, 121	0

All (16) RSRZ outliers are listed below:

Mol	Chain	Res	Type	RSRZ
1	A	29	ASP	10.5
1	A	31	ALA	9.4
1	A	28	ALA	8.9
1	A	20	HIS	8.4
1	A	30	ARG	6.8
1	A	26	ALA	6.6
1	A	23	VAL	5.3
1	A	25	LEU	4.5
1	A	32	PRO	4.2
1	A	27	PRO	3.8
1	A	33	ALA	3.2
1	A	21	LYS	3.0
1	A	22	LEU	2.9
1	A	24	PRO	2.3
1	A	239	TRP	2.1
1	A	395	LYS	2.0

6.2 Non-standard residues in protein, DNA, RNA chains [i](#)

There are no non-standard protein/DNA/RNA residues in this entry.

6.3 Carbohydrates [i](#)

There are no carbohydrates in this entry.

6.4 Ligands [i](#)

In the following table, the Atoms column lists the number of modelled atoms in the group and the number defined in the chemical component dictionary. LLDF column lists the quality of electron density of the group with respect to its neighbouring residues in protein, DNA or RNA chains. The B-factors column lists the minimum, median, 95th percentile and maximum values of B factors of atoms in the group. The column labelled 'Q< 0.9' lists the number of atoms with occupancy less than 0.9.

Mol	Type	Chain	Res	Atoms	RSCC	RSR	LLDF	B-factors(Å ²)	Q<0.9
4	FUC	A	513	10/11	0.68	0.33	10.57	70,98,120,140	0
3	NAG	A	514	14/15	0.62	0.33	7.93	72,89,110,119	0
7	GOL	A	519	6/6	0.73	0.19	6.41	60,72,84,88	0
7	GOL	A	516	6/6	0.85	0.14	6.07	32,48,61,73	0
7	GOL	A	518	6/6	0.90	0.31	4.24	53,71,90,94	0
7	GOL	A	517	6/6	0.90	0.23	3.68	32,62,78,81	0
8	AP2	A	520	27/27	0.95	0.15	2.51	19,58,89,97	0
3	NAG	A	503	14/15	0.89	0.15	1.52	37,64,83,85	0
3	NAG	A	506	14/15	0.92	0.09	1.21	28,49,59,72	0
3	NAG	A	511	14/15	0.96	0.08	0.78	32,39,51,78	0
2	ZN	A	501	1/1	1.00	0.05	-2.66	20,20,20,20	0
2	ZN	A	502	1/1	1.00	0.04	-3.15	20,20,20,20	0
3	NAG	A	515	14/15	0.39	0.54	-	75,118,145,147	0
3	NAG	A	507	14/15	0.72	0.32	-	55,99,122,129	0
5	BMA	A	508	11/12	0.70	0.28	-	67,88,105,106	0
6	MAN	A	510	11/12	0.53	0.54	-	79,109,133,136	0
4	FUC	A	504	10/11	0.84	0.40	-	75,97,118,126	0
6	MAN	A	509	11/12	0.64	0.46	-	76,101,121,124	0
3	NAG	A	505	14/15	0.61	0.42	-	66,98,119,125	0
3	NAG	A	512	14/15	0.93	0.16	-	43,61,87,93	0

6.5 Other polymers [i](#)

There are no such residues in this entry.