



# Full wwPDB X-ray Structure Validation Report ⓘ

Apr 24, 2016 – 06:11 AM EDT

PDB ID : 5FF4  
Title : HydE from *T. maritima* in complex with (2R,4R)-TMeTDA  
Authors : Rohac, R.; Amara, P.; Benjdia, A.; Martin, L.; Ruffie, P.; Favier, A.; Berteau, O.; Mouesca, J.M.; Fontecilla-Camps, J.C.; Nicolet, Y.  
Deposited on : 2015-12-17  
Resolution : 1.35 Å(reported)

This is a Full wwPDB X-ray Structure Validation Report for a publicly released PDB entry.  
We welcome your comments at [validation@mail.wwpdb.org](mailto:validation@mail.wwpdb.org)  
A user guide is available at  
<http://wwpdb.org/validation/2016/XrayValidationReportHelp>  
with specific help available everywhere you see the ⓘ symbol.

---

The following versions of software and data (see [references ⓘ](#)) were used in the production of this report:

MolProbity : 4.02b-467  
Mogul : 1.7.1 (RC1), CSD as537be (2016)  
Xtriage (Phenix) : 1.9-1692  
EDS : rb-20027257  
Percentile statistics : 20151230.v01 (using entries in the PDB archive December 30th 2015)  
Refmac : 5.8.0135  
CCP4 : 6.5.0  
Ideal geometry (proteins) : Engh & Huber (2001)  
Ideal geometry (DNA, RNA) : Parkinson et al. (1996)  
Validation Pipeline (wwPDB-VP) : rb-20027257

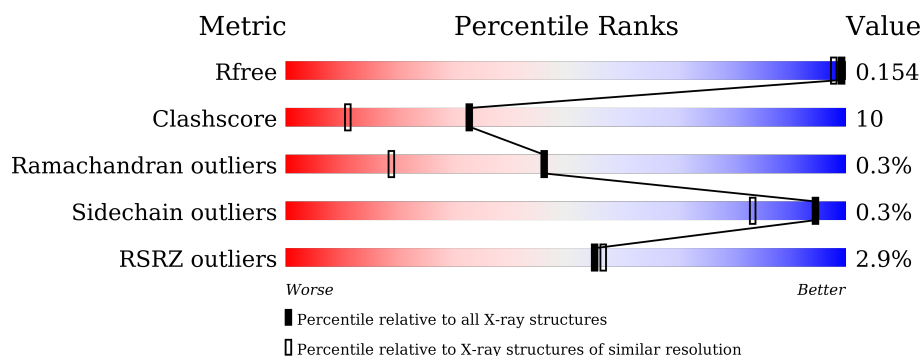
# 1 Overall quality at a glance

The following experimental techniques were used to determine the structure:

*X-RAY DIFFRACTION*

The reported resolution of this entry is 1.35 Å.

Percentile scores (ranging between 0-100) for global validation metrics of the entry are shown in the following graphic. The table shows the number of entries on which the scores are based.



Metric	Whole archive (#Entries)	Similar resolution (#Entries, resolution range(Å))
$R_{free}$	91344	2199 (1.40-1.32)
Clashscore	102246	2337 (1.40-1.32)
Ramachandran outliers	100387	2280 (1.40-1.32)
Sidechain outliers	100360	2279 (1.40-1.32)
RSRZ outliers	91569	2199 (1.40-1.32)

The table below summarises the geometric issues observed across the polymeric chains and their fit to the electron density. The red, orange, yellow and green segments on the lower bar indicate the fraction of residues that contain outliers for  $\geq 3$ , 2, 1 and 0 types of geometric quality criteria. A grey segment represents the fraction of residues that are not modelled. The numeric value for each fraction is indicated below the corresponding segment, with a dot representing fractions  $\leq 5\%$ . The upper red bar (where present) indicates the fraction of residues that have poor fit to the electron density. The numeric value is given above the bar.

Mol	Chain	Length	Quality of chain
1	A	358	<div> <div>3%</div> <div>80%</div> <div>15%</div> <div>..</div> </div>

The following table lists non-polymeric compounds, carbohydrate monomers and non-standard residues in protein, DNA, RNA chains that are outliers for geometric or electron-density-fit criteria:

Mol	Type	Chain	Res	Chirality	Geometry	Clashes	Electron density
3	CPS	A	406[A]	-	-	-	X
3	CPS	A	406[B]	-	-	-	X

*Continued on next page...*

*Continued from previous page...*

Mol	Type	Chain	Res	Chirality	Geometry	Clashes	Electron density
7	SE	A	411[B]	-	-	-	X

## 2 Entry composition

There are 8 unique types of molecules in this entry. The entry contains 3705 atoms, of which 0 are hydrogens and 0 are deuteriums.

In the tables below, the ZeroOcc column contains the number of atoms modelled with zero occupancy, the AltConf column contains the number of residues with at least one atom in alternate conformation and the Trace column contains the number of residues modelled with at most 2 atoms.

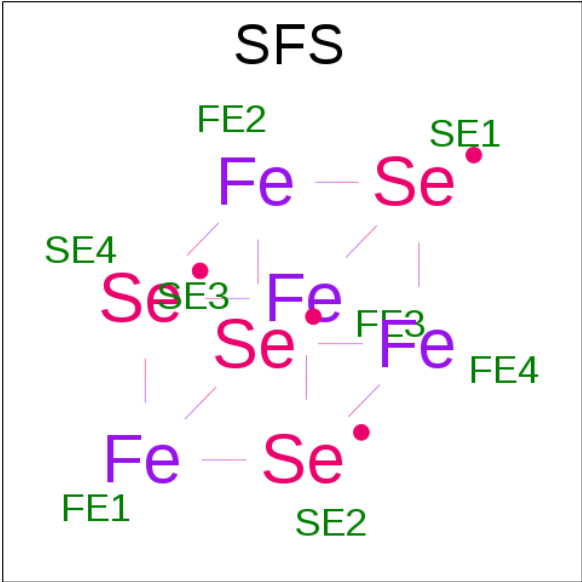
- Molecule 1 is a protein called [FeFe] hydrogenase maturase subunit HydE.

Mol	Chain	Residues	Atoms					ZeroOcc	AltConf	Trace
1	A	346	Total	C	N	O	S	0	31	0
			2951	1881	510	542	18			

There are 14 discrepancies between the modelled and reference sequences:

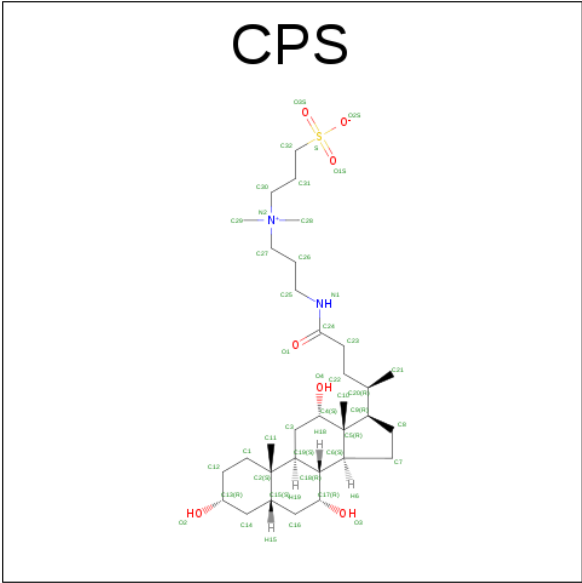
Chain	Residue	Modelled	Actual	Comment	Reference
A	-9	MET	-	initiating methionine	UNP Q9X0Z6
A	-8	TRP	-	expression tag	UNP Q9X0Z6
A	-7	SER	-	expression tag	UNP Q9X0Z6
A	-6	HIS	-	expression tag	UNP Q9X0Z6
A	-5	PRO	-	expression tag	UNP Q9X0Z6
A	-4	GLN	-	expression tag	UNP Q9X0Z6
A	-3	PHE	-	expression tag	UNP Q9X0Z6
A	-2	GLU	-	expression tag	UNP Q9X0Z6
A	-1	LYS	-	expression tag	UNP Q9X0Z6
A	0	ALA	-	expression tag	UNP Q9X0Z6
A	1	SER	-	expression tag	UNP Q9X0Z6
A	311	SER	CYS	engineered mutation	UNP Q9X0Z6
A	319	SER	CYS	engineered mutation	UNP Q9X0Z6
A	322	SER	CYS	engineered mutation	UNP Q9X0Z6

- Molecule 2 is Fe<sub>4</sub>-Se<sub>4</sub> cluster (three-letter code: SFS) (formula: Fe<sub>4</sub>Se<sub>4</sub>).



Mol	Chain	Residues	Atoms			ZeroOcc	AltConf
2	A	1	Total	Fe	Se	0	0
			8	4	4		

- Molecule 3 is 3-[(3-CHOLAMIDOPROPYL)DIMETHYLAMMONIO]-1-PROPANESULFO NATE (three-letter code: CPS) (formula: C<sub>32</sub>H<sub>58</sub>N<sub>2</sub>O<sub>7</sub>S).



Mol	Chain	Residues	Atoms				ZeroOcc	AltConf
3	A	1	Total	C	N	O	S	0
			42	32	2	7	1	
3	A	1	Total	C	N	O	S	0
			42	32	2	7	1	

Continued on next page...

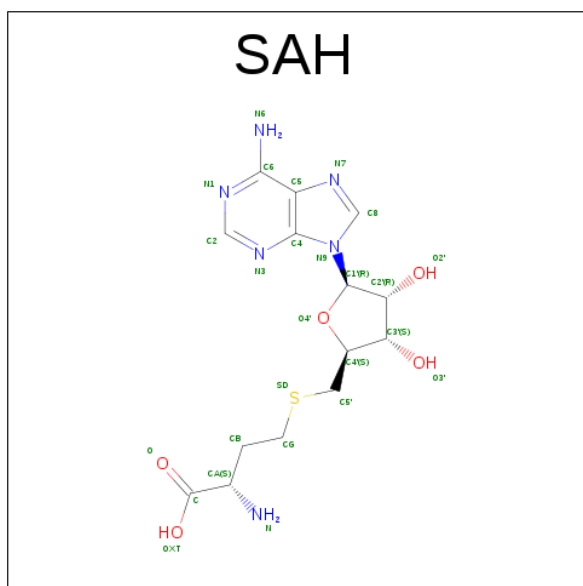
Continued from previous page...

Mol	Chain	Residues	Atoms				ZeroOcc	AltConf
3	A	1	Total	C	N	O	0	0
			29	24	1	4		
3	A	1	Total	C	N	O	0	0
			29	24	1	4		
3	A	1	Total	C	O		0	1
			50	44	6			

- Molecule 4 is CHLORIDE ION (three-letter code: CL) (formula: Cl).

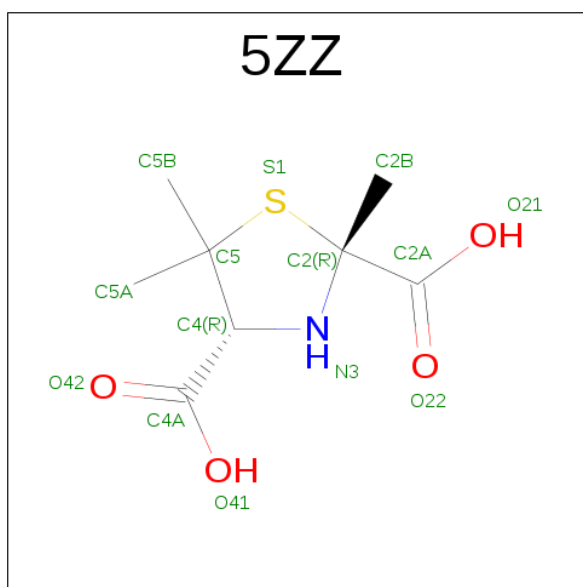
Mol	Chain	Residues	Atoms		ZeroOcc	AltConf
4	A	1	Total	Cl	0	0
			1	1		

- Molecule 5 is S-ADENOSYL-L-HOMOCYSTEINE (three-letter code: SAH) (formula: C<sub>14</sub>H<sub>20</sub>N<sub>6</sub>O<sub>5</sub>S).



Mol	Chain	Residues	Atoms					ZeroOcc	AltConf
5	A	1	Total	C	N	O	S	0	0
			26	14	6	5	1		

- Molecule 6 is (2 {R},4 {R})-2,5,5-trimethyl-1,3-thiazolidine-2,4-dicarboxylic acid (three-letter code: 5ZZ) (formula: C<sub>8</sub>H<sub>13</sub>NO<sub>4</sub>S).



Mol	Chain	Residues	Atoms					ZeroOcc	AltConf
6	A	1	Total	C	N	O	S	0	0
			14	8	1	4	1		

- Molecule 7 is SELENIUM ATOM (three-letter code: SE) (formula: Se).

Mol	Chain	Residues	Atoms		ZeroOcc	AltConf
7	A	2	Total	Se	0	2
			2	2		

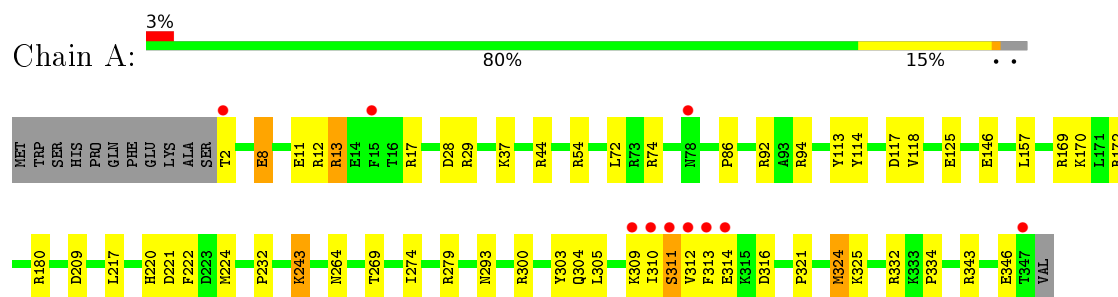
- Molecule 8 is water.

Mol	Chain	Residues	Atoms		ZeroOcc	AltConf
8	A	509	Total	O	0	11
			511	511		

### 3 Residue-property plots [i](#)

These plots are drawn for all protein, RNA and DNA chains in the entry. The first graphic for a chain summarises the proportions of errors displayed in the second graphic. The second graphic shows the sequence view annotated by issues in geometry and electron density. Residues are color-coded according to the number of geometric quality criteria for which they contain at least one outlier: green = 0, yellow = 1, orange = 2 and red = 3 or more. A red dot above a residue indicates a poor fit to the electron density ( $RSRZ > 2$ ). Stretches of 2 or more consecutive residues without any outlier are shown as a green connector. Residues present in the sample, but not in the model, are shown in grey.

- Molecule 1: [FeFe] hydrogenase maturase subunit HydE





## 4 Data and refinement statistics

Property	Value	Source
Space group	P 21 21 21	Depositor
Cell constants a, b, c, $\alpha$ , $\beta$ , $\gamma$	51.11Å 79.38Å 86.16Å 90.00° 90.00° 90.00°	Depositor
Resolution (Å)	43.08 – 1.35 43.08 – 1.35	Depositor EDS
% Data completeness (in resolution range)	99.7 (43.08-1.35) 99.7 (43.08-1.35)	Depositor EDS
$R_{merge}$	(Not available)	Depositor
$R_{sym}$	(Not available)	Depositor
$\langle I/\sigma(I) \rangle$ <sup>1</sup>	1.77 (at 1.35Å)	Xtriage
Refinement program	REFMAC 5.8.0131	Depositor
R, $R_{free}$	0.116 , 0.153 0.118 , 0.154	Depositor DCC
$R_{free}$ test set	3868 reflections (5.26%)	DCC
Wilson B-factor (Å <sup>2</sup> )	13.7	Xtriage
Anisotropy	0.498	Xtriage
Bulk solvent $k_{sol}$ (e/Å <sup>3</sup> ), $B_{sol}$ (Å <sup>2</sup> )	0.39 , 57.1	EDS
L-test for twinning <sup>2</sup>	$\langle  L  \rangle = 0.49$ , $\langle L^2 \rangle = 0.33$	Xtriage
Estimated twinning fraction	No twinning to report.	Xtriage
$F_o, F_c$ correlation	0.98	EDS
Total number of atoms	3705	wwPDB-VP
Average B, all atoms (Å <sup>2</sup> )	21.0	wwPDB-VP

Xtriage's analysis on translational NCS is as follows: *The largest off-origin peak in the Patterson function is 6.51% of the height of the origin peak. No significant pseudotranslation is detected.*

<sup>1</sup>Intensities estimated from amplitudes.

<sup>2</sup>Theoretical values of  $\langle |L| \rangle$ ,  $\langle L^2 \rangle$  for acentric reflections are 0.5, 0.375 respectively for untwinned datasets, and 0.333, 0.2 for perfectly twinned datasets.

## 5 Model quality

### 5.1 Standard geometry

Bond lengths and bond angles in the following residue types are not validated in this section: SAH, CL, SFS, 5ZZ, CPS, SE

The Z score for a bond length (or angle) is the number of standard deviations the observed value is removed from the expected value. A bond length (or angle) with  $|Z| > 5$  is considered an outlier worth inspection. RMSZ is the root-mean-square of all Z scores of the bond lengths (or angles).

Mol	Chain	Bond lengths		Bond angles	
		RMSZ	$\# Z  > 5$	RMSZ	$\# Z  > 5$
1	A	1.22	8/3039 (0.3%)	1.26	30/4103 (0.7%)

Chiral center outliers are detected by calculating the chiral volume of a chiral center and verifying if the center is modelled as a planar moiety or with the opposite hand. A planarity outlier is detected by checking planarity of atoms in a peptide group, atoms in a mainchain group or atoms of a sidechain that are expected to be planar.

Mol	Chain	#Chirality outliers	#Planarity outliers
1	A	0	1

All (8) bond length outliers are listed below:

Mol	Chain	Res	Type	Atoms	Z	Observed(Å)	Ideal(Å)
1	A	125	GLU	CD-OE1	-8.52	1.16	1.25
1	A	94[A]	ARG	CZ-NH2	7.45	1.42	1.33
1	A	94[B]	ARG	CZ-NH2	7.45	1.42	1.33
1	A	11	GLU	CD-OE2	-5.99	1.19	1.25
1	A	303	TYR	CE2-CZ	-5.98	1.30	1.38
1	A	29	ARG	CZ-NH1	5.51	1.40	1.33
1	A	8	GLU	CD-OE1	5.26	1.31	1.25
1	A	325	LYS	CD-CE	5.03	1.63	1.51

All (30) bond angle outliers are listed below:

Mol	Chain	Res	Type	Atoms	Z	Observed(°)	Ideal(°)
1	A	172	ARG	NE-CZ-NH2	-13.26	113.67	120.30
1	A	13[A]	ARG	NE-CZ-NH1	-11.09	114.76	120.30
1	A	29	ARG	NE-CZ-NH2	-10.93	114.83	120.30
1	A	172	ARG	NE-CZ-NH1	10.10	125.35	120.30
1	A	300[A]	ARG	NE-CZ-NH2	-9.94	115.33	120.30

*Continued on next page...*

*Continued from previous page...*

Mol	Chain	Res	Type	Atoms	Z	Observed(°)	Ideal(°)
1	A	300[B]	ARG	NE-CZ-NH2	-9.94	115.33	120.30
1	A	13[A]	ARG	NE-CZ-NH2	9.25	124.92	120.30
1	A	332	ARG	NE-CZ-NH2	-9.11	115.75	120.30
1	A	169	ARG	NE-CZ-NH2	-8.12	116.24	120.30
1	A	29	ARG	NE-CZ-NH1	8.08	124.34	120.30
1	A	44	ARG	NE-CZ-NH1	8.02	124.31	120.30
1	A	44	ARG	NE-CZ-NH2	-7.77	116.42	120.30
1	A	74	ARG	NE-CZ-NH1	7.71	124.16	120.30
1	A	72	LEU	CB-CG-CD2	7.52	123.78	111.00
1	A	300[A]	ARG	NE-CZ-NH1	6.87	123.74	120.30
1	A	300[B]	ARG	NE-CZ-NH1	6.87	123.74	120.30
1	A	343	ARG	NE-CZ-NH2	-6.34	117.13	120.30
1	A	243[A]	LYS	CD-CE-NZ	-6.06	97.76	111.70
1	A	243[B]	LYS	CD-CE-NZ	-6.06	97.76	111.70
1	A	279	ARG	NE-CZ-NH2	-5.93	117.34	120.30
1	A	324[A]	MET	CG-SD-CE	-5.85	90.84	100.20
1	A	324[B]	MET	CG-SD-CE	-5.85	90.84	100.20
1	A	221	ASP	CB-CG-OD2	-5.53	113.32	118.30
1	A	117	ASP	CB-CG-OD2	-5.41	113.43	118.30
1	A	117	ASP	CB-CG-OD1	5.40	123.16	118.30
1	A	316	ASP	CB-CG-OD2	-5.31	113.52	118.30
1	A	180	ARG	NE-CZ-NH2	-5.12	117.74	120.30
1	A	92	ARG	NE-CZ-NH2	-5.08	117.76	120.30
1	A	209	ASP	CB-CG-OD2	-5.08	113.73	118.30
1	A	28	ASP	CB-CG-OD1	-5.01	113.79	118.30

There are no chirality outliers.

All (1) planarity outliers are listed below:

Mol	Chain	Res	Type	Group
1	A	54	ARG	Sidechain

## 5.2 Too-close contacts ⓘ

In the following table, the Non-H and H(model) columns list the number of non-hydrogen atoms and hydrogen atoms in the chain respectively. The H(added) column lists the number of hydrogen atoms added and optimized by MolProbity. The Clashes column lists the number of clashes within the asymmetric unit, whereas Symm-Clashes lists symmetry related clashes.

Mol	Chain	Non-H	H(model)	H(added)	Clashes	Symm-Clashes
1	A	2951	0	2942	59	1

*Continued on next page...*

*Continued from previous page...*

Mol	Chain	Non-H	H(model)	H(added)	Clashes	Symm-Clashes
2	A	8	0	0	0	0
3	A	192	0	264	15	0
4	A	1	0	0	0	0
5	A	26	0	19	0	0
6	A	14	0	0	0	0
7	A	2	0	0	0	0
8	A	511	0	0	19	2
All	All	3705	0	3225	67	2

The all-atom clashscore is defined as the number of clashes found per 1000 atoms (including hydrogen atoms). The all-atom clashscore for this structure is 10.

All (67) close contacts within the same asymmetric unit are listed below, sorted by their clash magnitude.

Atom-1	Atom-2	Interatomic distance (Å)	Clash overlap (Å)
1:A:334:PRO:HB3	8:A:897[B]:HOH:O	1.24	1.32
1:A:17:ARG:NH1	8:A:502:HOH:O	1.76	1.14
1:A:309[B]:LYS:HD3	8:A:636:HOH:O	1.46	1.12
1:A:113:TYR:HE2	1:A:114[B]:TYR:CE1	1.77	1.03
1:A:113:TYR:CE2	1:A:114[B]:TYR:CE1	2.52	0.98
1:A:310[B]:ILE:HG12	1:A:311:SER:N	1.81	0.95
1:A:324[B]:MET:HE2	3:A:406[B]:CPS:H11B	1.50	0.94
1:A:114[B]:TYR:CD1	1:A:118:VAL:HG11	2.09	0.87
1:A:114[B]:TYR:CE1	1:A:118:VAL:HG11	2.12	0.85
1:A:217:LEU:HD11	8:A:521:HOH:O	1.78	0.83
1:A:157:LEU:CD2	1:A:224[A]:MET:HE2	2.08	0.83
1:A:8:GLU:O	1:A:12:ARG:HG3	1.80	0.82
1:A:324[B]:MET:CE	3:A:406[B]:CPS:C11	2.58	0.82
1:A:314:GLU:O	8:A:503:HOH:O	1.98	0.82
1:A:324[B]:MET:CE	3:A:406[B]:CPS:H11B	2.14	0.78
1:A:309[B]:LYS:CD	8:A:636:HOH:O	2.14	0.74
1:A:321:PRO:HB3	3:A:406[A]:CPS:H11A	1.69	0.73
1:A:324[B]:MET:HE2	3:A:406[B]:CPS:C11	2.17	0.71
3:A:406[A]:CPS:H4	3:A:406[A]:CPS:H21A	1.71	0.71
1:A:157:LEU:HD23	1:A:224[A]:MET:HE2	1.73	0.70
1:A:304:GLN:CG	8:A:850:HOH:O	2.40	0.69
1:A:310[A]:ILE:O	8:A:504:HOH:O	2.10	0.69
1:A:324[B]:MET:HE3	3:A:406[B]:CPS:C11	2.22	0.68
1:A:310[B]:ILE:O	8:A:504:HOH:O	2.12	0.67
1:A:310[B]:ILE:HG12	1:A:311:SER:CA	2.27	0.64
1:A:334:PRO:HA	8:A:661[B]:HOH:O	1.97	0.64

*Continued on next page...*

*Continued from previous page...*

Atom-1	Atom-2	Interatomic distance (Å)	Clash overlap (Å)
1:A:157:LEU:CD2	1:A:224[A]:MET:CE	2.76	0.63
1:A:334:PRO:CB	8:A:661[B]:HOH:O	2.48	0.62
1:A:157:LEU:HD23	1:A:224[A]:MET:CE	2.29	0.61
1:A:269:THR:HG23	1:A:310[B]:ILE:HG23	1.83	0.61
1:A:334:PRO:CA	8:A:661[B]:HOH:O	2.49	0.60
1:A:114[B]:TYR:CD1	1:A:118:VAL:CG1	2.81	0.60
1:A:310[B]:ILE:CG1	1:A:311:SER:N	2.63	0.58
1:A:243[A]:LYS:HE3	8:A:902:HOH:O	2.04	0.58
1:A:13[A]:ARG:NH1	1:A:346:GLU:OE1	2.36	0.57
1:A:310[B]:ILE:CD1	1:A:311:SER:HB2	2.35	0.56
1:A:37[B]:LYS:HD3	8:A:885:HOH:O	2.06	0.55
3:A:406[A]:CPS:O3	8:A:501[A]:HOH:O	0.69	0.54
1:A:310[B]:ILE:HD13	1:A:311:SER:HB2	1.90	0.53
1:A:113:TYR:CD2	1:A:114[B]:TYR:CE1	2.98	0.51
1:A:293[A]:ASN:ND2	8:A:516:HOH:O	2.44	0.50
3:A:402:CPS:H21A	3:A:402:CPS:H4	1.95	0.48
1:A:113:TYR:CD2	1:A:114[B]:TYR:CD1	3.02	0.47
1:A:157:LEU:HD21	1:A:224[A]:MET:CE	2.45	0.47
3:A:403:CPS:H4	3:A:403:CPS:H21A	1.96	0.47
3:A:405:CPS:H21A	3:A:405:CPS:H4	1.96	0.47
1:A:157:LEU:HD21	1:A:224[A]:MET:HE2	1.93	0.46
1:A:114[B]:TYR:CD1	1:A:118:VAL:CB	2.99	0.45
1:A:86:PRO:HD3	1:A:114[B]:TYR:OH	2.17	0.45
1:A:243[B]:LYS:HG3	8:A:688:HOH:O	2.16	0.44
3:A:402:CPS:C24	3:A:402:CPS:H21B	2.47	0.44
1:A:114[B]:TYR:HD1	1:A:118:VAL:HG21	1.82	0.44
1:A:113:TYR:CE2	1:A:114[B]:TYR:CD1	3.05	0.43
3:A:406[B]:CPS:H21A	3:A:406[B]:CPS:H4	2.00	0.42
1:A:224[A]:MET:HA	1:A:264:ASN:O	2.19	0.42
1:A:324[B]:MET:HE3	3:A:406[B]:CPS:H11	2.01	0.42
1:A:170[A]:LYS:HG3	8:A:776:HOH:O	2.18	0.42
1:A:232[A]:PRO:HD2	1:A:243[A]:LYS:HG3	2.01	0.41
1:A:220:HIS:HB2	1:A:222:PHE:CE1	2.55	0.41
1:A:243[A]:LYS:HD3	1:A:274:ILE:HG22	2.03	0.41
3:A:404:CPS:H21A	3:A:404:CPS:H4	2.01	0.41
1:A:224[B]:MET:HA	1:A:264:ASN:O	2.21	0.41
1:A:222:PHE:HA	8:A:558:HOH:O	2.20	0.41
1:A:312:VAL:O	1:A:312:VAL:HG12	2.21	0.40
1:A:305:LEU:H	1:A:309[B]:LYS:NZ	2.20	0.40
1:A:313:PHE:N	1:A:313:PHE:CD1	2.89	0.40

All (2) symmetry-related close contacts are listed below. The label for Atom-2 includes the sym-

metry operator and encoded unit-cell translations to be applied.

Atom-1	Atom-2	Interatomic distance (Å)	Clash overlap (Å)
8:A:793:HOH:O	8:A:874:HOH:O[2_655]	2.07	0.13
1:A:313:PHE:O	8:A:776:HOH:O[3_755]	2.09	0.11

## 5.3 Torsion angles [i](#)

### 5.3.1 Protein backbone [i](#)

In the following table, the Percentiles column shows the percent Ramachandran outliers of the chain as a percentile score with respect to all X-ray entries followed by that with respect to entries of similar resolution.

The Analysed column shows the number of residues for which the backbone conformation was analysed, and the total number of residues.

Mol	Chain	Analysed	Favoured	Allowed	Outliers	Percentiles
1	A	372/358 (104%)	356 (96%)	15 (4%)	1 (0%)	46 19

All (1) Ramachandran outliers are listed below:

Mol	Chain	Res	Type
1	A	311	SER

### 5.3.2 Protein sidechains [i](#)

In the following table, the Percentiles column shows the percent sidechain outliers of the chain as a percentile score with respect to all X-ray entries followed by that with respect to entries of similar resolution.

The Analysed column shows the number of residues for which the sidechain conformation was analysed, and the total number of residues.

Mol	Chain	Analysed	Rotameric	Outliers	Percentiles
1	A	318/313 (102%)	317 (100%)	1 (0%)	94 83

All (1) residues with a non-rotameric sidechain are listed below:

Mol	Chain	Res	Type
1	A	2	THR

Some sidechains can be flipped to improve hydrogen bonding and reduce clashes. There are no

such sidechains identified.

### 5.3.3 RNA ⓘ

There are no RNA molecules in this entry.

## 5.4 Non-standard residues in protein, DNA, RNA chains ⓘ

There are no non-standard protein/DNA/RNA residues in this entry.

## 5.5 Carbohydrates ⓘ

There are no carbohydrates in this entry.

## 5.6 Ligand geometry ⓘ

Of 12 ligands modelled in this entry, 3 are monoatomic - leaving 9 for Mogul analysis.

In the following table, the Counts columns list the number of bonds (or angles) for which Mogul statistics could be retrieved, the number of bonds (or angles) that are observed in the model and the number of bonds (or angles) that are defined in the chemical component dictionary. The Link column lists molecule types, if any, to which the group is linked. The Z score for a bond length (or angle) is the number of standard deviations the observed value is removed from the expected value. A bond length (or angle) with  $|Z| > 2$  is considered an outlier worth inspection. RMSZ is the root-mean-square of all Z scores of the bond lengths (or angles).

Mol	Type	Chain	Res	Link	Bond lengths			Bond angles		
					Counts	RMSZ	$\# Z  > 2$	Counts	RMSZ	$\# Z  > 2$
2	SFS	A	401	1,5	0,12,12	0.00	-	0,24,24	0.00	-
3	CPS	A	402	-	45,45,45	1.69	5 (11%)	69,70,70	1.37	13 (18%)
3	CPS	A	403	-	45,45,45	1.35	7 (15%)	69,70,70	1.41	12 (17%)
3	CPS	A	404	-	32,32,45	0.91	0	51,51,70	1.07	4 (7%)
3	CPS	A	405	-	32,32,45	1.24	4 (12%)	51,51,70	1.18	4 (7%)
3	CPS	A	406[A]	-	28,28,45	1.41	3 (10%)	46,46,70	1.87	10 (21%)
3	CPS	A	406[B]	-	28,28,45	1.28	4 (14%)	46,46,70	1.36	6 (13%)
5	SAH	A	408	2	22,28,28	1.23	3 (13%)	18,40,40	2.37	2 (11%)
6	5ZZ	A	409	-	7,14,14	1.50	2 (28%)	8,23,23	0.78	0

In the following table, the Chirals column lists the number of chiral outliers, the number of chiral centers analysed, the number of these observed in the model and the number defined in the chemical component dictionary. Similar counts are reported in the Torsion and Rings columns. '-' means

no outliers of that kind were identified.

Mol	Type	Chain	Res	Link	Chirals	Torsions	Rings
2	SFS	A	401	1,5	-	0/0/48/48	0/3/5/5
3	CPS	A	402	-	-	0/25/90/90	0/4/4/4
3	CPS	A	403	-	-	0/25/90/90	0/4/4/4
3	CPS	A	404	-	-	0/9/74/90	0/4/4/4
3	CPS	A	405	-	-	0/9/74/90	0/4/4/4
3	CPS	A	406[A]	-	-	0/4/69/90	0/4/4/4
3	CPS	A	406[B]	-	-	0/4/69/90	0/4/4/4
5	SAH	A	408	2	-	0/7/31/31	0/3/3/3
6	5ZZ	A	409	-	-	0/0/27/27	0/1/1/1

All (28) bond length outliers are listed below:

Mol	Chain	Res	Type	Atoms	Z	Observed(Å)	Ideal(Å)
3	A	402	CPS	C32-S	-8.76	1.64	1.77
3	A	403	CPS	C32-S	-5.06	1.69	1.77
3	A	406[A]	CPS	C5-C9	-2.96	1.50	1.55
3	A	402	CPS	C1-C12	-2.94	1.47	1.53
3	A	403	CPS	C5-C9	-2.81	1.50	1.55
3	A	403	CPS	C14-C15	-2.80	1.49	1.53
3	A	403	CPS	C11-C2	-2.53	1.49	1.54
3	A	403	CPS	C2-C15	-2.45	1.51	1.55
3	A	402	CPS	C14-C15	-2.41	1.49	1.53
3	A	406[B]	CPS	C5-C6	-2.34	1.51	1.55
3	A	402	CPS	C10-C5	-2.29	1.50	1.54
3	A	405	CPS	C20-C9	-2.28	1.50	1.54
3	A	405	CPS	C14-C13	-2.28	1.47	1.51
6	A	409	5ZZ	C5-S1	-2.10	1.82	1.84
3	A	406[B]	CPS	C5-C4	-2.08	1.51	1.54
3	A	403	CPS	C5-C6	-2.05	1.52	1.55
3	A	402	CPS	C30-N2	-2.03	1.48	1.52
3	A	405	CPS	C5-C6	-2.00	1.52	1.55
3	A	406[A]	CPS	C12-C13	2.03	1.56	1.51
3	A	403	CPS	C16-C15	2.06	1.57	1.53
3	A	405	CPS	O4-C4	2.06	1.47	1.43
6	A	409	5ZZ	C4-N3	2.07	1.48	1.46
3	A	406[B]	CPS	C3-C19	2.26	1.57	1.53
5	A	408	SAH	C5-C4	2.39	1.45	1.40
3	A	406[B]	CPS	C10-C5	2.56	1.58	1.54
5	A	408	SAH	C2-N3	2.62	1.36	1.32
5	A	408	SAH	O4'-C1'	2.63	1.45	1.41
3	A	406[A]	CPS	C16-C15	2.87	1.58	1.53



All (51) bond angle outliers are listed below:

Mol	Chain	Res	Type	Atoms	Z	Observed(°)	Ideal(°)
5	A	408	SAH	N3-C2-N1	-8.78	121.98	128.87
3	A	406[A]	CPS	C7-C6-C5	-6.32	97.49	103.59
3	A	406[A]	CPS	C5-C9-C20	-3.55	115.10	119.43
3	A	406[A]	CPS	C14-C15-C2	-3.04	109.39	112.66
3	A	402	CPS	O3S-S-C32	-3.04	104.72	106.87
3	A	403	CPS	C16-C15-C2	-2.92	109.52	112.66
3	A	406[A]	CPS	C9-C5-C4	-2.90	115.14	117.68
3	A	406[A]	CPS	C3-C4-C5	-2.87	108.32	111.22
3	A	405	CPS	C15-C14-C13	-2.83	108.68	112.88
3	A	405	CPS	C3-C19-C2	-2.83	110.83	113.77
3	A	403	CPS	C23-C22-C20	-2.73	109.38	114.46
3	A	406[B]	CPS	C10-C5-C9	-2.68	106.98	111.20
5	A	408	SAH	C1'-N9-C4	-2.60	123.91	126.81
3	A	402	CPS	O2-C13-C14	-2.49	104.82	109.86
3	A	402	CPS	C26-C25-N1	-2.48	105.28	112.29
3	A	403	CPS	C26-C27-N2	-2.34	110.60	115.54
3	A	403	CPS	O1S-S-C32	-2.28	105.26	106.87
3	A	403	CPS	C25-N1-C24	-2.24	118.36	122.79
3	A	402	CPS	O1S-S-C32	-2.21	105.31	106.87
3	A	406[A]	CPS	C22-C20-C9	-2.16	106.58	112.35
3	A	402	CPS	C14-C13-C12	-2.13	107.80	110.53
3	A	406[A]	CPS	C5-C6-C18	-2.09	111.98	114.73
3	A	403	CPS	C28-N2-C27	-2.08	103.95	109.42
3	A	402	CPS	C31-C30-N2	-2.06	111.21	115.54
3	A	403	CPS	C11-C2-C1	-2.05	104.76	108.23
3	A	404	CPS	C8-C9-C5	-2.04	101.62	103.59
3	A	404	CPS	C14-C15-C2	-2.04	110.47	112.66
3	A	402	CPS	C29-N2-C27	-2.03	104.08	109.42
3	A	406[B]	CPS	C11-C2-C15	-2.02	106.70	110.28
3	A	404	CPS	C10-C5-C9	-2.00	108.05	111.20
3	A	403	CPS	C9-C5-C6	2.02	102.13	100.08
3	A	406[B]	CPS	C14-C15-C2	2.07	114.88	112.66
3	A	402	CPS	C19-C18-C17	2.10	114.43	111.89
3	A	402	CPS	C22-C23-C24	2.18	118.23	113.26
3	A	405	CPS	C1-C2-C15	2.22	110.20	107.76
3	A	403	CPS	C29-N2-C27	2.24	115.31	109.42
3	A	402	CPS	C10-C5-C6	2.30	114.84	111.20
3	A	406[B]	CPS	C8-C9-C5	2.32	105.82	103.59
3	A	402	CPS	C1-C2-C15	2.35	110.36	107.76
3	A	403	CPS	C3-C19-C18	2.45	114.29	110.77
3	A	403	CPS	C14-C15-C2	2.71	115.57	112.66
3	A	405	CPS	C6-C5-C4	2.78	109.89	107.37

*Continued on next page...*

*Continued from previous page...*

Mol	Chain	Res	Type	Atoms	Z	Observed(°)	Ideal(°)
3	A	406[A]	CPS	O2-C13-C12	2.80	116.80	110.04
3	A	406[A]	CPS	C19-C18-C17	3.14	115.68	111.89
3	A	404	CPS	C1-C2-C15	3.38	111.48	107.76
3	A	406[B]	CPS	C11-C2-C19	3.41	115.70	111.20
3	A	402	CPS	C29-N2-C30	3.43	118.45	109.42
3	A	406[A]	CPS	C1-C2-C15	3.74	111.88	107.76
3	A	402	CPS	O2S-S-O1S	3.83	119.74	111.26
3	A	406[B]	CPS	C9-C5-C4	4.09	121.27	117.68
3	A	403	CPS	O2S-S-C32	4.21	113.74	104.99

There are no chirality outliers.

There are no torsion outliers.

There are no ring outliers.

6 monomers are involved in 15 short contacts:

Mol	Chain	Res	Type	Clashes	Symm-Clashes
3	A	402	CPS	2	0
3	A	403	CPS	1	0
3	A	404	CPS	1	0
3	A	405	CPS	1	0
3	A	406[A]	CPS	3	0
3	A	406[B]	CPS	7	0

## 5.7 Other polymers [i](#)

There are no such residues in this entry.

## 5.8 Polymer linkage issues [i](#)

There are no chain breaks in this entry.

## 6 Fit of model and data [i](#)

### 6.1 Protein, DNA and RNA chains [i](#)

In the following table, the column labelled ‘#RSRZ> 2’ contains the number (and percentage) of RSRZ outliers, followed by percent RSRZ outliers for the chain as percentile scores relative to all X-ray entries and entries of similar resolution. The OWAB column contains the minimum, median, 95<sup>th</sup> percentile and maximum values of the occupancy-weighted average B-factor per residue. The column labelled ‘Q< 0.9’ lists the number of (and percentage) of residues with an average occupancy less than 0.9.

Mol	Chain	Analysed	<RSRZ>	#RSRZ>2	OWAB(Å <sup>2</sup> )	Q<0.9
1	A	346/358 (96%)	-0.33	10 (2%) 55 57	10, 16, 30, 48	8 (2%)

All (10) RSRZ outliers are listed below:

Mol	Chain	Res	Type	RSRZ
1	A	313	PHE	4.4
1	A	310[A]	ILE	3.4
1	A	78[A]	ASN	2.6
1	A	311	SER	2.6
1	A	309[B]	LYS	2.6
1	A	312	VAL	2.4
1	A	2	THR	2.4
1	A	314	GLU	2.4
1	A	347	THR	2.3
1	A	15	PHE	2.2

### 6.2 Non-standard residues in protein, DNA, RNA chains [i](#)

There are no non-standard protein/DNA/RNA residues in this entry.

### 6.3 Carbohydrates [i](#)

There are no carbohydrates in this entry.

### 6.4 Ligands [i](#)

In the following table, the Atoms column lists the number of modelled atoms in the group and the number defined in the chemical component dictionary. LLDF column lists the quality of electron density of the group with respect to its neighbouring residues in protein, DNA or RNA chains. The B-factors column lists the minimum, median, 95<sup>th</sup> percentile and maximum values of B factors

of atoms in the group. The column labelled 'Q< 0.9' lists the number of atoms with occupancy less than 0.9.

Mol	Type	Chain	Res	Atoms	RSCC	RSR	LLDF	B-factors( $\text{\AA}^2$ )	Q<0.9
3	CPS	A	406[A]	25/42	0.88	0.14	5.85	10,12,14,15	25
3	CPS	A	406[B]	25/42	0.88	0.14	5.70	18,21,30,35	25
7	SE	A	411[B]	1/1	0.87	0.13	2.43	22,22,22,22	1
3	CPS	A	402	42/42	0.97	0.08	0.86	10,14,26,30	5
3	CPS	A	403	42/42	0.92	0.10	0.62	14,18,38,48	5
7	SE	A	410[B]	1/1	1.00	0.08	0.52	17,17,17,17	1
3	CPS	A	405	29/42	0.89	0.09	-0.12	17,20,25,32	0
5	SAH	A	408	26/26	0.97	0.06	-0.23	13,15,17,21	0
3	CPS	A	404	29/42	0.96	0.06	-0.34	13,15,37,42	0
6	5ZZ	A	409	14/14	0.97	0.06	-0.43	13,15,17,19	0
2	SFS	A	401	8/8	0.99	0.05	-0.87	15,16,17,18	1
4	CL	A	407	1/1	1.00	0.06	-1.20	13,13,13,13	0

## 6.5 Other polymers

There are no such residues in this entry.