



# Full wwPDB X-ray Structure Validation Report ⓘ

Jan 31, 2016 – 07:24 PM GMT

PDB ID : 1FHW  
Title : Structure of the pleckstrin homology domain from GRP1 in complex with inositol(1,3,4,5,6)pentakisphosphate  
Authors : Ferguson, K.M.; Kavran, J.M.; Sankaran, V.G.; Fournier, E.; Isakoff, S.J.; Skolnik, E.Y.; Lemmon, M.A.  
Deposited on : 2000-08-02  
Resolution : 1.90 Å(reported)

This is a Full wwPDB X-ray Structure Validation Report for a publicly released PDB entry.  
We welcome your comments at [validation@mail.wwpdb.org](mailto:validation@mail.wwpdb.org)  
A user guide is available at  
<http://wwpdb.org/validation/2016/XrayValidationReportHelp>  
with specific help available everywhere you see the ⓘ symbol.

---

The following versions of software and data (see [references ⓘ](#)) were used in the production of this report:

MolProbity : 4.02b-467  
Mogul : 1.7 (RC4), CSD as536be (2015)  
Xtriage (Phenix) : **NOT EXECUTED**  
EDS : **NOT EXECUTED**  
Percentile statistics : 20151230.v01 (using entries in the PDB archive December 30th 2015)  
Ideal geometry (proteins) : Engh & Huber (2001)  
Ideal geometry (DNA, RNA) : Parkinson et al. (1996)  
Validation Pipeline (wwPDB-VP) : trunk26865

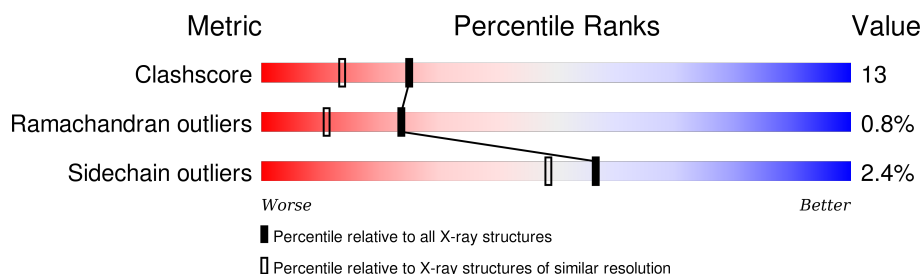
# 1 Overall quality at a glance

The following experimental techniques were used to determine the structure:

*X-RAY DIFFRACTION*

The reported resolution of this entry is 1.90 Å.

Percentile scores (ranging between 0-100) for global validation metrics of the entry are shown in the following graphic. The table shows the number of entries on which the scores are based.



Metric	Whole archive (#Entries)	Similar resolution (#Entries, resolution range(Å))
Clashscore	102246	5398 (1.90-1.90)
Ramachandran outliers	100387	5338 (1.90-1.90)
Sidechain outliers	100360	5339 (1.90-1.90)

The table below summarises the geometric issues observed across the polymeric chains and their fit to the electron density. The red, orange, yellow and green segments on the lower bar indicate the fraction of residues that contain outliers for  $\geq 3$ , 2, 1 and 0 types of geometric quality criteria. A grey segment represents the fraction of residues that are not modelled. The numeric value for each fraction is indicated below the corresponding segment, with a dot representing fractions  $\leq 5\%$ . The upper red bar (where present) indicates the fraction of residues that have poor fit to the electron density. The numeric value is given above the bar.

Note EDS was not executed.

Mol	Chain	Length	Quality of chain
1	A	129	
1	B	129	

The following table lists non-polymeric compounds, carbohydrate monomers and non-standard residues in protein, DNA, RNA chains that are outliers for geometric or electron-density-fit criteria:

Mol	Type	Chain	Res	Chirality	Geometry	Clashes	Electron density
3	I5P	A	1001	X	-	-	-

## 2 Entry composition [i](#)

There are 4 unique types of molecules in this entry. The entry contains 2245 atoms, of which 0 are hydrogens and 0 are deuteriums.

In the tables below, the ZeroOcc column contains the number of atoms modelled with zero occupancy, the AltConf column contains the number of residues with at least one atom in alternate conformation and the Trace column contains the number of residues modelled with at most 2 atoms.

- Molecule 1 is a protein called GUANINE NUCLEOTIDE EXCHANGE FACTOR AND INTEGRIN BINDING PROTEIN HOMOLOG GRP1.

Mol	Chain	Residues	Atoms					ZeroOcc	AltConf	Trace
1	A	122	Total	C	N	O	S	0	0	0
			985	628	173	180	4			
1	B	126	Total	C	N	O	S	0	0	0
			1027	656	179	187	5			

There are 2 discrepancies between the modelled and reference sequences:

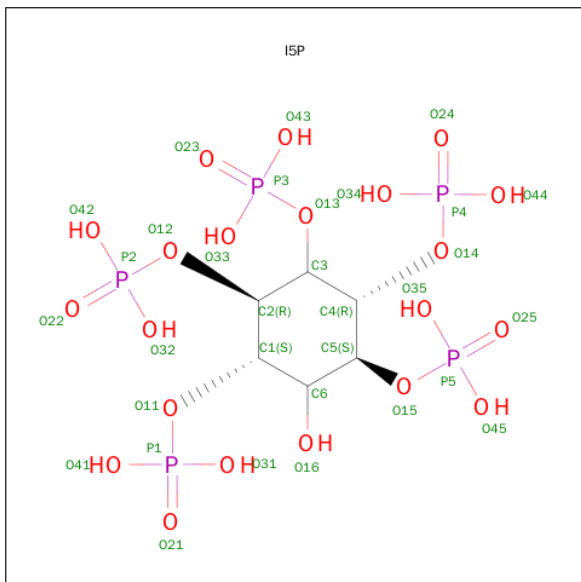
Chain	Residue	Modelled	Actual	Comment	Reference
A	263	MET	-	CLONING ARTIFACT	GB 2183209
B	263	MET	-	CLONING ARTIFACT	GB 2183209

- Molecule 2 is SULFATE ION (three-letter code: SO4) (formula: O<sub>4</sub>S).



Mol	Chain	Residues	Atoms			ZeroOcc	AltConf
2	B	1	Total	O	S	0	0
			5	4	1		

- Molecule 3 is INOSITOL-(1,3,4,5,6)-PENTAKISPHOSPHATE (three-letter code: I5P) (formula:  $C_6H_{17}O_{21}P_5$ ).



Mol	Chain	Residues	Atoms				ZeroOcc	AltConf
3	A	1	Total	C	O	P	0	0
			32	6	21	5		
3	B	1	Total	C	O	P	0	0
			32	6	21	5		

- Molecule 4 is water.

Mol	Chain	Residues	Atoms		ZeroOcc	AltConf
4	A	82	Total	O	0	0
			82	82		
4	B	82	Total	O	0	0
			82	82		



## 4 Data and refinement statistics

Xtriage (Phenix) and EDS were not executed - this section will therefore be incomplete.

Property	Value	Source
Space group	P 1 21 1	Depositor
Cell constants a, b, c, $\alpha$ , $\beta$ , $\gamma$	37.97Å 72.22Å 46.90Å 90.00° 93.21° 90.00°	Depositor
Resolution (Å)	46.83 – 1.90	Depositor
% Data completeness (in resolution range)	91.9 (46.83-1.90)	Depositor
$R_{merge}$	0.05	Depositor
$R_{sym}$	0.05	Depositor
Refinement program	CNS 0.9	Depositor
R, $R_{free}$	0.229 , 0.270	Depositor
Estimated twinning fraction	No twinning to report.	Xtriage
Total number of atoms	2245	wwPDB-VP
Average B, all atoms (Å <sup>2</sup> )	27.0	wwPDB-VP

## 5 Model quality

### 5.1 Standard geometry

Bond lengths and bond angles in the following residue types are not validated in this section: I5P, SO4

The Z score for a bond length (or angle) is the number of standard deviations the observed value is removed from the expected value. A bond length (or angle) with  $|Z| > 5$  is considered an outlier worth inspection. RMSZ is the root-mean-square of all Z scores of the bond lengths (or angles).

Mol	Chain	Bond lengths		Bond angles	
		RMSZ	# Z  >5	RMSZ	# Z  >5
1	A	0.35	0/1012	0.60	0/1372
1	B	0.36	0/1054	0.58	0/1425
All	All	0.35	0/2066	0.59	0/2797

There are no bond length outliers.

There are no bond angle outliers.

There are no chirality outliers.

There are no planarity outliers.

### 5.2 Too-close contacts

In the following table, the Non-H and H(model) columns list the number of non-hydrogen atoms and hydrogen atoms in the chain respectively. The H(added) column lists the number of hydrogen atoms added and optimized by MolProbity. The Clashes column lists the number of clashes within the asymmetric unit, whereas Symm-Clashes lists symmetry related clashes.

Mol	Chain	Non-H	H(model)	H(added)	Clashes	Symm-Clashes
1	A	985	0	935	31	0
1	B	1027	0	1002	22	0
2	B	5	0	0	0	0
3	A	32	0	7	2	0
3	B	32	0	7	1	0
4	A	82	0	0	2	0
4	B	82	0	0	2	0
All	All	2245	0	1951	51	0

The all-atom clashscore is defined as the number of clashes found per 1000 atoms (including hydrogen atoms). The all-atom clashscore for this structure is 13.

All (51) close contacts within the same asymmetric unit are listed below, sorted by their clash magnitude.

Atom-1	Atom-2	Interatomic distance (Å)	Clash overlap (Å)
1:B:315:ILE:HD11	1:B:329:LEU:HG	1.71	0.73
1:A:366:GLU:O	1:A:370:GLU:HG3	1.92	0.69
1:A:265:PRO:CA	1:A:266:ASP:N	2.57	0.67
1:B:373:LYS:NZ	1:B:373:LYS:HB3	2.11	0.66
1:B:295:TYR:CZ	1:B:306:GLY:HA3	2.35	0.61
1:A:321:PRO:HG2	1:A:322:ARG:HH11	1.65	0.61
1:B:363:PRO:HG3	4:B:85:HOH:O	2.03	0.58
1:B:366:GLU:O	1:B:370:GLU:HG3	2.03	0.56
1:B:368:LYS:HE3	1:B:372:MET:HE1	1.88	0.56
1:A:265:PRO:HA	1:A:266:ASP:N	2.21	0.56
1:A:265:PRO:O	1:A:289:THR:CB	2.54	0.55
1:A:277:ARG:O	1:A:278:VAL:CB	2.55	0.55
1:B:382:ASP:N	1:B:383:PRO:HD2	2.22	0.54
1:A:355:HIS:HE1	3:A:1001:I5P:O24	1.90	0.54
1:A:265:PRO:O	1:A:289:THR:HB	2.07	0.54
1:B:278:VAL:HG12	1:B:280:THR:HG23	1.91	0.53
1:A:277:ARG:HB2	3:A:1001:I5P:O42	2.09	0.53
1:B:381:ARG:NH2	4:B:130:HOH:O	2.42	0.52
1:B:315:ILE:CD1	1:B:329:LEU:HG	2.38	0.51
1:A:385:TYR:O	1:A:386:ASP:HB2	2.12	0.50
1:A:265:PRO:N	1:A:266:ASP:N	2.60	0.49
1:A:322:ARG:HD3	1:A:322:ARG:H	1.78	0.49
1:B:360:ILE:HD12	1:B:361:SER:N	2.29	0.48
1:A:291:ASN:O	1:A:310:LEU:HB2	2.13	0.48
1:B:318:VAL:HG21	1:B:328:GLU:HG3	1.96	0.47
1:B:363:PRO:HB2	1:B:367:GLU:OE2	2.14	0.47
1:A:321:PRO:HG2	1:A:322:ARG:HD3	1.96	0.46
1:B:373:LYS:HZ2	1:B:373:LYS:HB3	1.79	0.46
1:B:355:HIS:HE1	3:B:1002:I5P:O24	1.99	0.45
1:A:271:LEU:HD13	1:A:360:ILE:HG21	1.99	0.45
1:A:322:ARG:HD3	1:A:322:ARG:N	2.32	0.45
1:A:366:GLU:HB2	4:A:76:HOH:O	2.17	0.44
1:B:391:ARG:OXT	1:B:391:ARG:HG3	2.18	0.44
1:B:313:LEU:HD13	1:B:329:LEU:HD22	2.00	0.43
1:B:349:ARG:NH1	1:B:351:VAL:HG12	2.33	0.43
1:B:315:ILE:HD13	1:B:329:LEU:HA	2.00	0.43
1:A:377:ALA:O	1:A:381:ARG:HB2	2.19	0.43
1:A:295:TYR:CZ	1:A:306:GLY:HA3	2.55	0.42
1:A:320:ASP:CG	1:A:321:PRO:HD2	2.41	0.42
1:A:281:TRP:HE1	1:A:322:ARG:HH21	1.68	0.42

*Continued on next page...*



Continued from previous page...

Atom-1	Atom-2	Interatomic distance (Å)	Clash overlap (Å)
1:A:286:PHE:HD2	1:A:293:LEU:HG	1.85	0.42
1:A:349:ARG:HD3	4:A:79:HOH:O	2.19	0.42
1:B:381:ARG:C	1:B:383:PRO:HD2	2.41	0.41
1:A:362:ALA:HA	1:A:363:PRO:HD3	1.85	0.41
1:A:291:ASN:HD22	1:A:291:ASN:HA	1.70	0.41
1:A:274:LEU:HD13	1:A:281:TRP:CE2	2.55	0.41
1:A:322:ARG:HG2	1:A:323:LYS:N	2.36	0.40
1:A:311:GLU:HG2	1:B:337:GLN:NE2	2.36	0.40
1:A:266:ASP:OD2	1:A:374:SER:HB3	2.21	0.40
1:A:352:GLU:OE2	1:B:292:CYS:SG	2.79	0.40
1:A:265:PRO:C	1:A:266:ASP:N	2.75	0.40

There are no symmetry-related clashes.

## 5.3 Torsion angles [i](#)

### 5.3.1 Protein backbone [i](#)

In the following table, the Percentiles column shows the percent Ramachandran outliers of the chain as a percentile score with respect to all X-ray entries followed by that with respect to entries of similar resolution.

The Analysed column shows the number of residues for which the backbone conformation was analysed, and the total number of residues.

Mol	Chain	Analysed	Favoured	Allowed	Outliers	Percentiles	
1	A	119/129 (92%)	113 (95%)	4 (3%)	2 (2%)	11	2
1	B	124/129 (96%)	122 (98%)	2 (2%)	0	100	100
All	All	243/258 (94%)	235 (97%)	6 (2%)	2 (1%)	24	11

All (2) Ramachandran outliers are listed below:

Mol	Chain	Res	Type
1	A	278	VAL
1	A	280	THR

### 5.3.2 Protein sidechains ⓘ

In the following table, the Percentiles column shows the percent sidechain outliers of the chain as a percentile score with respect to all X-ray entries followed by that with respect to entries of similar resolution.

The Analysed column shows the number of residues for which the sidechain conformation was analysed, and the total number of residues.

Mol	Chain	Analysed	Rotameric	Outliers	Percentiles	
1	A	103/117 (88%)	100 (97%)	3 (3%)	50	40
1	B	109/117 (93%)	107 (98%)	2 (2%)	66	61
All	All	212/234 (91%)	207 (98%)	5 (2%)	57	49

All (5) residues with a non-rotameric sidechain are listed below:

Mol	Chain	Res	Type
1	A	291	ASN
1	A	310	LEU
1	A	322	ARG
1	B	329	LEU
1	B	360	ILE

Some sidechains can be flipped to improve hydrogen bonding and reduce clashes. All (3) such sidechains are listed below:

Mol	Chain	Res	Type
1	A	291	ASN
1	A	355	HIS
1	B	355	HIS

### 5.3.3 RNA ⓘ

There are no RNA molecules in this entry.

## 5.4 Non-standard residues in protein, DNA, RNA chains ⓘ

There are no non-standard protein/DNA/RNA residues in this entry.

## 5.5 Carbohydrates ⓘ

There are no carbohydrates in this entry.

## 5.6 Ligand geometry

3 ligands are modelled in this entry.

In the following table, the Counts columns list the number of bonds (or angles) for which Mogul statistics could be retrieved, the number of bonds (or angles) that are observed in the model and the number of bonds (or angles) that are defined in the chemical component dictionary. The Link column lists molecule types, if any, to which the group is linked. The Z score for a bond length (or angle) is the number of standard deviations the observed value is removed from the expected value. A bond length (or angle) with  $|Z| > 2$  is considered an outlier worth inspection. RMSZ is the root-mean-square of all Z scores of the bond lengths (or angles).

Mol	Type	Chain	Res	Link	Bond lengths			Bond angles		
					Counts	RMSZ	$\# Z  > 2$	Counts	RMSZ	$\# Z  > 2$
3	I5P	A	1001	-	32,32,32	0.63	0	43,53,53	0.76	0
3	I5P	B	1002	-	32,32,32	0.64	0	43,53,53	1.13	4 (9%)
2	SO4	B	2001	-	4,4,4	0.21	0	6,6,6	0.10	0

In the following table, the Chirals column lists the number of chiral outliers, the number of chiral centers analysed, the number of these observed in the model and the number defined in the chemical component dictionary. Similar counts are reported in the Torsion and Rings columns. '-' means no outliers of that kind were identified.

Mol	Type	Chain	Res	Link	Chirals	Torsions	Rings
3	I5P	A	1001	-	2/2/11/11	0/25/49/49	0/1/1/1
3	I5P	B	1002	-	-	0/25/49/49	0/1/1/1
2	SO4	B	2001	-	-	0/0/0/0	0/0/0/0

There are no bond length outliers.

All (4) bond angle outliers are listed below:

Mol	Chain	Res	Type	Atoms	Z	Observed(°)	Ideal(°)
3	B	1002	I5P	C5-C6-C1	2.17	113.44	109.06
3	B	1002	I5P	C6-C1-C2	2.35	116.61	111.44
3	B	1002	I5P	C4-C3-C2	2.83	116.68	110.43
3	B	1002	I5P	C3-C2-C1	3.61	118.42	110.43

All (2) chirality outliers are listed below:

Mol	Chain	Res	Type	Atom
3	A	1001	I5P	C2
3	A	1001	I5P	C1

There are no torsion outliers.

There are no ring outliers.

2 monomers are involved in 3 short contacts:

Mol	Chain	Res	Type	Clashes	Symm-Clashes
3	A	1001	I5P	2	0
3	B	1002	I5P	1	0

## 5.7 Other polymers [i](#)

There are no such residues in this entry.

## 5.8 Polymer linkage issues [i](#)

There are no chain breaks in this entry.

## 6 Fit of model and data ⓘ

### 6.1 Protein, DNA and RNA chains ⓘ

EDS was not executed - this section will therefore be empty.

### 6.2 Non-standard residues in protein, DNA, RNA chains ⓘ

EDS was not executed - this section will therefore be empty.

### 6.3 Carbohydrates ⓘ

EDS was not executed - this section will therefore be empty.

### 6.4 Ligands ⓘ

EDS was not executed - this section will therefore be empty.

### 6.5 Other polymers ⓘ

EDS was not executed - this section will therefore be empty.