



wwPDB X-ray Structure Validation Summary Report ⓘ

Jan 31, 2016 – 07:32 PM GMT

PDB ID : 1FJG
Title : STRUCTURE OF THE THERMUS THERMOPHILUS 30S RIBOSOMAL
SUBUNIT IN COMPLEX WITH THE ANTIBIOTICS STREPTOMYCIN,
SPECTINOMYCIN, AND PAROMOMYCIN
Authors : Carter, A.P.; Clemons Jr., W.M.; Brodersen, D.E.; Wimberly, B.T.; Morgan-
Warren, R.J.; Ramakrishnan, V.
Deposited on : 2000-08-08
Resolution : 3.00 Å(reported)

This is a wwPDB X-ray Structure Validation Summary Report for a publicly released PDB entry.
We welcome your comments at validation@mail.wwpdb.org
A user guide is available at
<http://wwpdb.org/validation/2016/XrayValidationReportHelp>
with specific help available everywhere you see the ⓘ symbol.

The following versions of software and data (see [references ⓘ](#)) were used in the production of this report:

MolProbity : 4.02b-467
Mogul : 1.7 (RC4), CSD as536be (2015)
Xtriage (Phenix) : 1.9-1692
EDS : rb-20026688
Percentile statistics : 20151230.v01 (using entries in the PDB archive December 30th 2015)
Refmac : 5.8.0135
CCP4 : 6.5.0
Ideal geometry (proteins) : Engh & Huber (2001)
Ideal geometry (DNA, RNA) : Parkinson et al. (1996)
Validation Pipeline (wwPDB-VP) : trunk26865

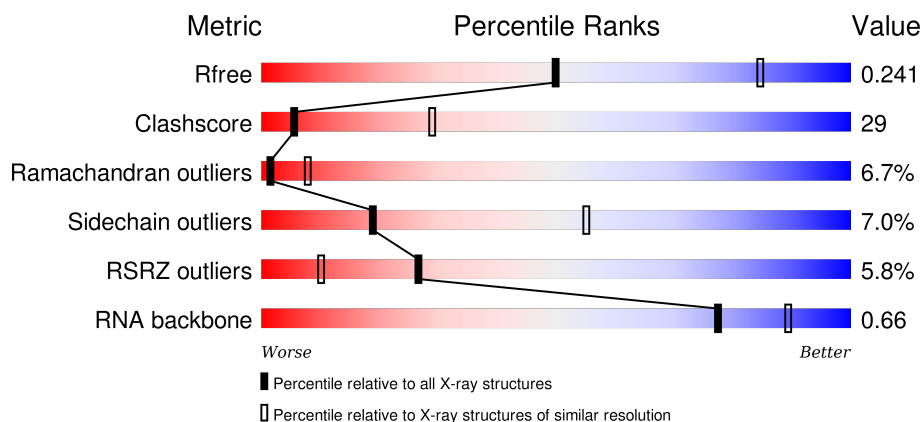
1 Overall quality at a glance

The following experimental techniques were used to determine the structure:

X-RAY DIFFRACTION

The reported resolution of this entry is 3.00 Å.

Percentile scores (ranging between 0-100) for global validation metrics of the entry are shown in the following graphic. The table shows the number of entries on which the scores are based.



Metric	Whole archive (#Entries)	Similar resolution (#Entries, resolution range(Å))
R_{free}	91344	1578 (3.00-3.00)
Clashscore	102246	1912 (3.00-3.00)
Ramachandran outliers	100387	1853 (3.00-3.00)
Sidechain outliers	100360	1856 (3.00-3.00)
RSRZ outliers	91569	1592 (3.00-3.00)
RNA backbone	2183	1036 (3.40-2.60)

The table below summarises the geometric issues observed across the polymeric chains and their fit to the electron density. The red, orange, yellow and green segments on the lower bar indicate the fraction of residues that contain outliers for ≥ 3 , 2, 1 and 0 types of geometric quality criteria. A grey segment represents the fraction of residues that are not modelled. The numeric value for each fraction is indicated below the corresponding segment, with a dot representing fractions $\leq 5\%$. The upper red bar (where present) indicates the fraction of residues that have poor fit to the electron density. The numeric value is given above the bar.

Mol	Chain	Length	Quality of chain
1	A	1522	<div> <div>6%</div> <div> <div>36%</div> <div>49%</div> <div>12%</div> <div>..</div> </div> </div>
2	X	6	<div> <div>33%</div> <div>83%</div> <div>17%</div> </div>
3	B	256	<div> <div>%</div> <div>28%</div> <div>56%</div> <div>8%</div> <div>7%</div> </div>
4	C	239	<div> <div>23%</div> <div>53%</div> <div>9%</div> <div>•</div> <div>14%</div> </div>

Continued on next page...

Continued from previous page...

Mol	Chain	Length	Quality of chain
5	D	209	
6	E	162	
7	F	101	
8	G	156	
9	H	138	
10	I	128	
11	J	105	
12	K	129	
13	L	135	
14	M	126	
15	N	61	
16	O	89	
17	P	88	
18	Q	105	
19	R	88	
20	S	93	
21	T	106	
22	V	26	

The following table lists non-polymeric compounds, carbohydrate monomers and non-standard residues in protein, DNA, RNA chains that are outliers for geometric or electron-density-fit criteria:

Mol	Type	Chain	Res	Chirality	Geometry	Clashes	Electron density
23	PAR	A	1545	-	-	-	X
24	MG	A	1547	-	-	-	X
24	MG	A	1558	-	-	-	X
24	MG	A	1561	-	-	-	X
24	MG	A	1563	-	-	-	X
24	MG	A	1566	-	-	-	X
24	MG	A	1567	-	-	-	X

Continued on next page...

Continued from previous page...

Mol	Type	Chain	Res	Chirality	Geometry	Clashes	Electron density
24	MG	A	1577	-	-	-	X
24	MG	A	1580	-	-	-	X
24	MG	A	1596	-	-	-	X
24	MG	A	1604	-	-	-	X
24	MG	A	1607	-	-	-	X
24	MG	A	1608	-	-	-	X
24	MG	A	1614	-	-	-	X
24	MG	A	1615	-	-	-	X
24	MG	A	1626	-	-	-	X
24	MG	A	1627	-	-	-	X
24	MG	A	1629	-	-	-	X
24	MG	A	1630	-	-	-	X
24	MG	A	1631	-	-	-	X
24	MG	A	210	-	-	-	X
24	MG	A	211	-	-	-	X
24	MG	D	215	-	-	-	X

2 Entry composition

There are 27 unique types of molecules in this entry. The entry contains 51995 atoms, of which 0 are hydrogens and 0 are deuteriums.

In the tables below, the ZeroOcc column contains the number of atoms modelled with zero occupancy, the AltConf column contains the number of residues with at least one atom in alternate conformation and the Trace column contains the number of residues modelled with at most 2 atoms.

- Molecule 1 is a RNA chain called 16S RIBOSOMAL RNA.

Mol	Chain	Residues	Atoms					ZeroOcc	AltConf	Trace
1	A	1507	Total	C	N	O	P	22	0	0
			32391	14418	6002	10465	1506			

- Molecule 2 is a RNA chain called FRAGMENT OF MESSENGER RNA.

Mol	Chain	Residues	Atoms					ZeroOcc	AltConf	Trace
2	X	6	Total	C	N	O	P	0	0	0
			117	54	13	45	5			

- Molecule 3 is a protein called 30S RIBOSOMAL PROTEIN S2.

Mol	Chain	Residues	Atoms					ZeroOcc	AltConf	Trace
3	B	237	Total	C	N	O	S	0	0	0
			1923	1226	344	348	5			

- Molecule 4 is a protein called 30S RIBOSOMAL PROTEIN S3.

Mol	Chain	Residues	Atoms					ZeroOcc	AltConf	Trace
4	C	206	Total	C	N	O	S	0	0	0
			1612	1016	314	281	1			

- Molecule 5 is a protein called 30S RIBOSOMAL PROTEIN S4.

Mol	Chain	Residues	Atoms					ZeroOcc	AltConf	Trace
5	D	208	Total	C	N	O	S	0	0	0
			1703	1066	339	291	7			

There are 2 discrepancies between the modelled and reference sequences:

Chain	Residue	Modelled	Actual	Comment	Reference
D	199	GLN	ASN	CONFLICT	UNP P80373
D	201	ASN	GLN	CONFLICT	UNP P80373

- Molecule 6 is a protein called 30S RIBOSOMAL PROTEIN S5.

Mol	Chain	Residues	Atoms					ZeroOcc	AltConf	Trace
6	E	150	Total	C	N	O	S	0	0	0
			1146	724	217	201	4			

- Molecule 7 is a protein called 30S RIBOSOMAL PROTEIN S6.

Mol	Chain	Residues	Atoms					ZeroOcc	AltConf	Trace
7	F	101	Total	C	N	O	S	0	0	0
			843	531	155	154	3			

- Molecule 8 is a protein called 30S RIBOSOMAL PROTEIN S7.

Mol	Chain	Residues	Atoms					ZeroOcc	AltConf	Trace
8	G	155	Total	C	N	O	S	0	0	0
			1257	781	252	218	6			

- Molecule 9 is a protein called 30S RIBOSOMAL PROTEIN S8.

Mol	Chain	Residues	Atoms					ZeroOcc	AltConf	Trace
9	H	138	Total	C	N	O	S	0	0	0
			1116	705	215	193	3			

- Molecule 10 is a protein called 30S RIBOSOMAL PROTEIN S9.

Mol	Chain	Residues	Atoms					ZeroOcc	AltConf	Trace
10	I	127	Total	C	N	O	S	0	0	0
			1011	639	198	174				

- Molecule 11 is a protein called 30S RIBOSOMAL PROTEIN S10.

Mol	Chain	Residues	Atoms					ZeroOcc	AltConf	Trace
11	J	98	Total	C	N	O	S	0	0	0
			792	498	156	137	1			

- Molecule 12 is a protein called 30S RIBOSOMAL PROTEIN S11.

Mol	Chain	Residues	Atoms					ZeroOcc	AltConf	Trace
12	K	119	Total	C	N	O	S	0	0	0
			885	549	168	165	3			

- Molecule 13 is a protein called 30S RIBOSOMAL PROTEIN S12.

Mol	Chain	Residues	Atoms					ZeroOcc	AltConf	Trace
13	L	125	Total	C	N	O	S	0	0	0
			975	614	196	164	1			

- Molecule 14 is a protein called 30S RIBOSOMAL PROTEIN S13.

Mol	Chain	Residues	Atoms					ZeroOcc	AltConf	Trace
14	M	125	Total	C	N	O	S	0	0	0
			997	617	207	171	2			

- Molecule 15 is a protein called 30S RIBOSOMAL PROTEIN S14.

Mol	Chain	Residues	Atoms					ZeroOcc	AltConf	Trace
15	N	60	Total	C	N	O	S	0	0	0
			492	312	104	72	4			

- Molecule 16 is a protein called 30S RIBOSOMAL PROTEIN S15.

Mol	Chain	Residues	Atoms					ZeroOcc	AltConf	Trace
16	O	88	Total	C	N	O	S	0	0	0
			734	459	147	126	2			

- Molecule 17 is a protein called 30S RIBOSOMAL PROTEIN S16.

Mol	Chain	Residues	Atoms					ZeroOcc	AltConf	Trace
17	P	83	Total	C	N	O	S	0	0	0
			700	443	139	117	1			

- Molecule 18 is a protein called 30S RIBOSOMAL PROTEIN S17.

Mol	Chain	Residues	Atoms					ZeroOcc	AltConf	Trace
18	Q	104	Total	C	N	O	S	0	0	0
			857	547	161	147	2			

- Molecule 19 is a protein called 30S RIBOSOMAL PROTEIN S18.

Mol	Chain	Residues	Atoms					ZeroOcc	AltConf	Trace
19	R	73	Total	C	N	O		0	0	0
			597	380	118	99				

- Molecule 20 is a protein called 30S RIBOSOMAL PROTEIN S19.

Mol	Chain	Residues	Atoms					ZeroOcc	AltConf	Trace
20	S	84	Total	C	N	O	S	0	0	0
			674	430	126	116	2			

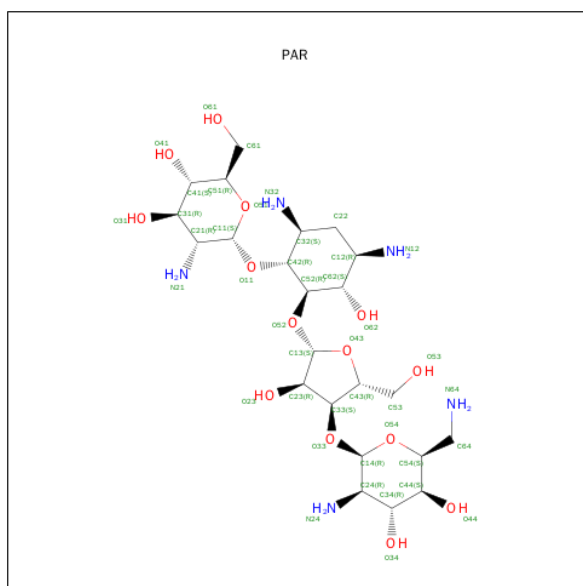
- Molecule 21 is a protein called 30S RIBOSOMAL PROTEIN S20.

Mol	Chain	Residues	Atoms					ZeroOcc	AltConf	Trace
21	T	99	Total	C	N	O	S	0	0	0
			762	469	162	129	2			

- Molecule 22 is a protein called 30S RIBOSOMAL PROTEIN THX.

Mol	Chain	Residues	Atoms					ZeroOcc	AltConf	Trace
22	V	24	Total	C	N	O		0	0	0
			208	128	50	30				

- Molecule 23 is PAROMOMYCIN (three-letter code: PAR) (formula: $C_{23}H_{45}N_5O_{14}$).



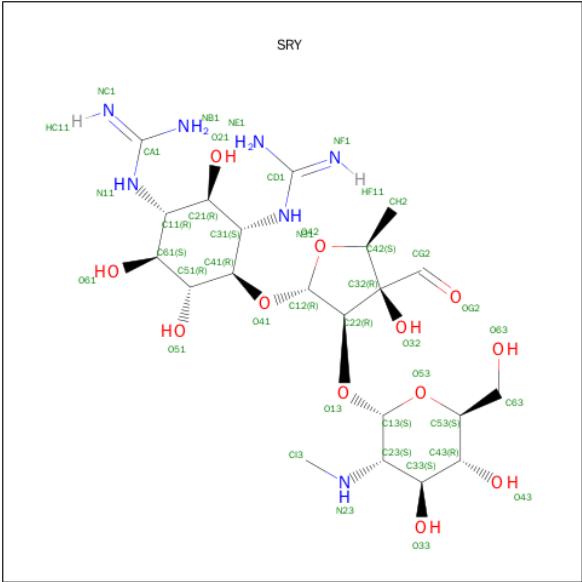
Mol	Chain	Residues	Atoms		ZeroOcc	AltConf
24	A	94	Total 94	Mg 94	0	0
24	D	1	Total 1	Mg 1	0	0

- | Mol | Chain | Residues | Atoms | ZeroOcc | AltConf |
|-----|-------|----------|-----------------|---------|---------|
| 25 | D | 1 | Total Zn
1 1 | 0 | 0 |
| 25 | N | 1 | Total Zn
1 1 | 0 | 0 |

-

Mol	Chain	Residues	Atoms				ZeroOcc	AltConf
26	A	1	Total	C	N	O	0	0
			23	14	2	7		

- 
- WORLD WIDE
PDB
PROTEIN DATA BANK

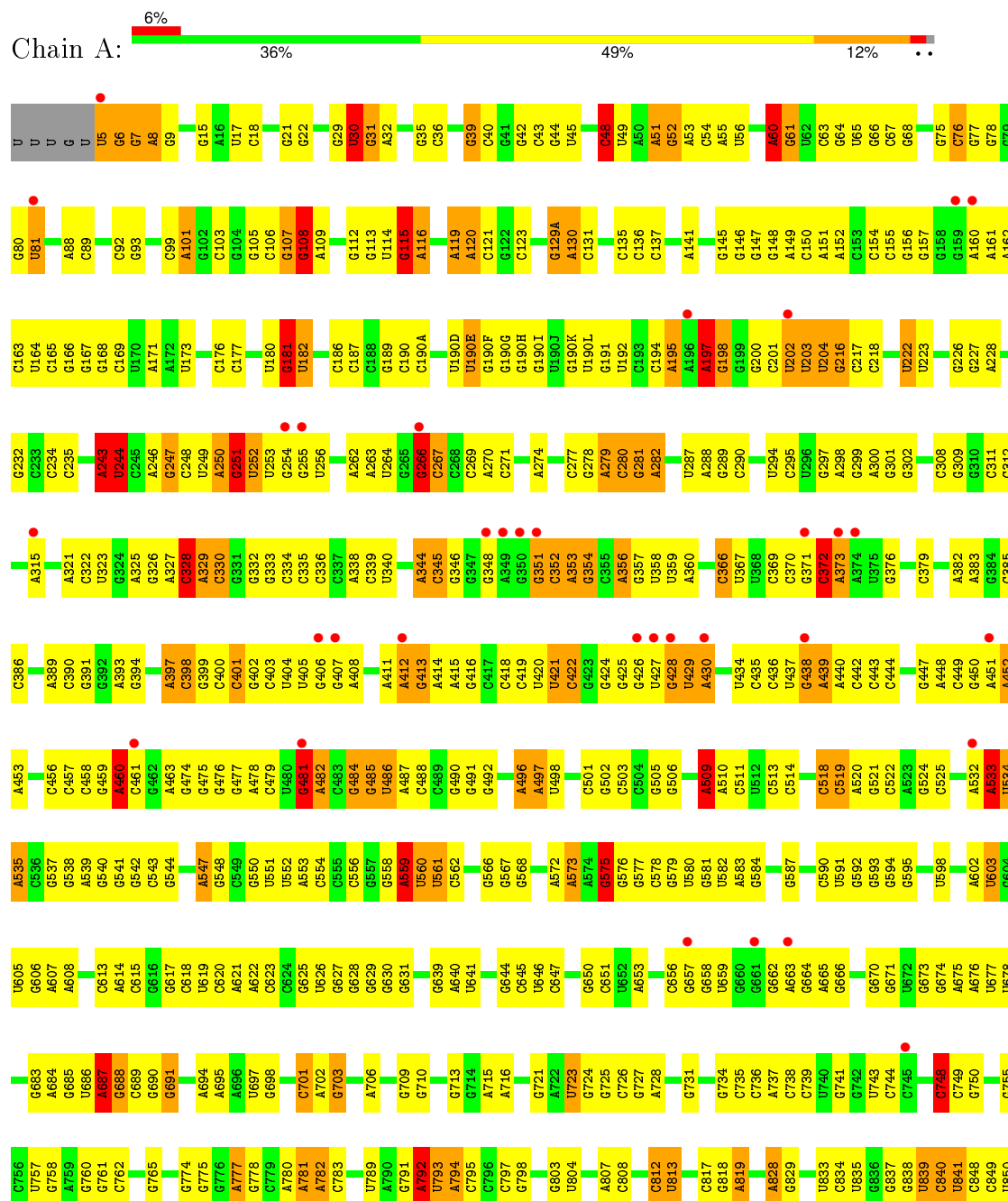


Mol	Chain	Residues	Atoms				ZeroOcc	AltConf
27	A	1	Total	C	N	O	0	0
			40	21	7	12		

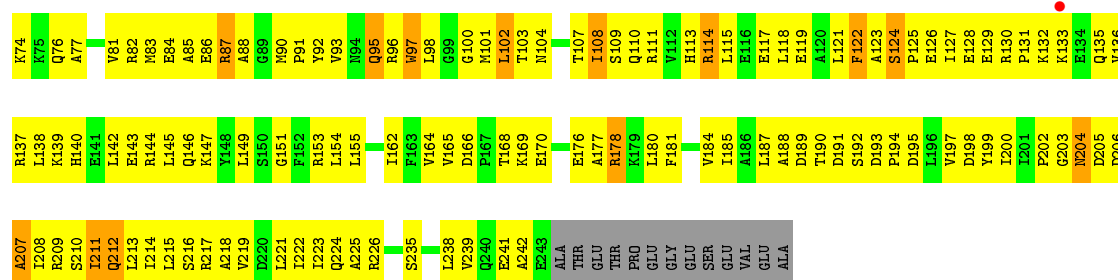
3 Residue-property plots

These plots are drawn for all protein, RNA and DNA chains in the entry. The first graphic for a chain summarises the proportions of errors displayed in the second graphic. The second graphic shows the sequence view annotated by issues in geometry and electron density. Residues are color-coded according to the number of geometric quality criteria for which they contain at least one outlier: green = 0, yellow = 1, orange = 2 and red = 3 or more. A red dot above a residue indicates a poor fit to the electron density ($\text{RSRZ} > 2$). Stretches of 2 or more consecutive residues without any outlier are shown as a green connector. Residues present in the sample, but not in the model, are shown in grey.

• Molecule 1: 16S RIBOSOMAL RNA

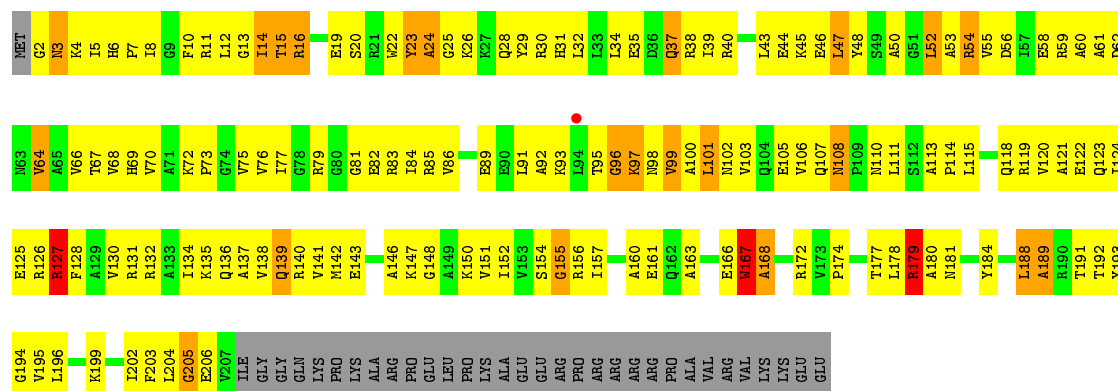






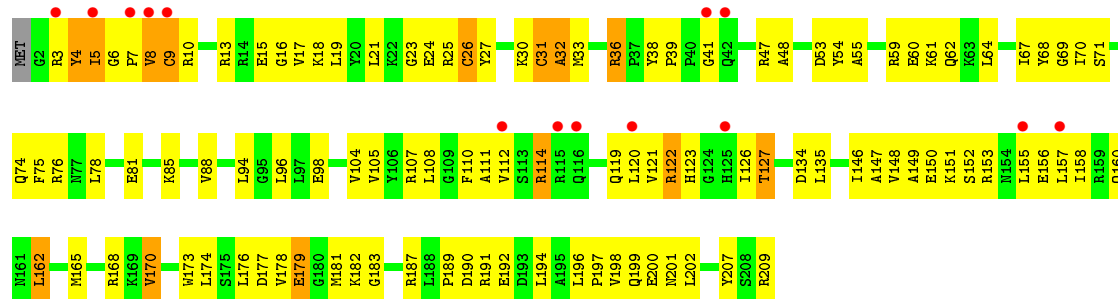
• Molecule 4: 30S RIBOSOMAL PROTEIN S3

Chain C: 23% 53% 9% 14%



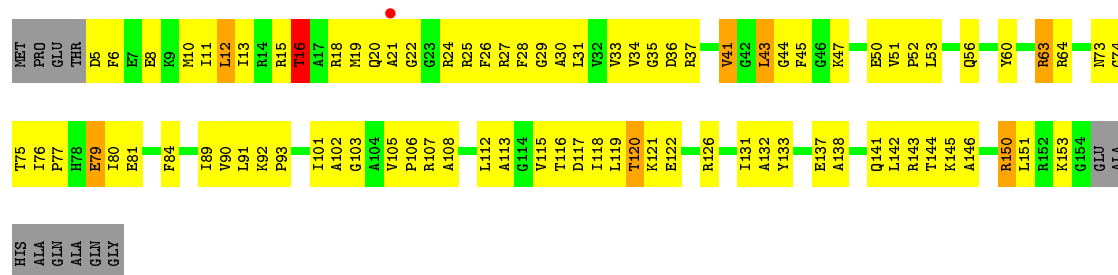
• Molecule 5: 30S RIBOSOMAL PROTEIN S4

Chain D: 7% 46% 46% 7%

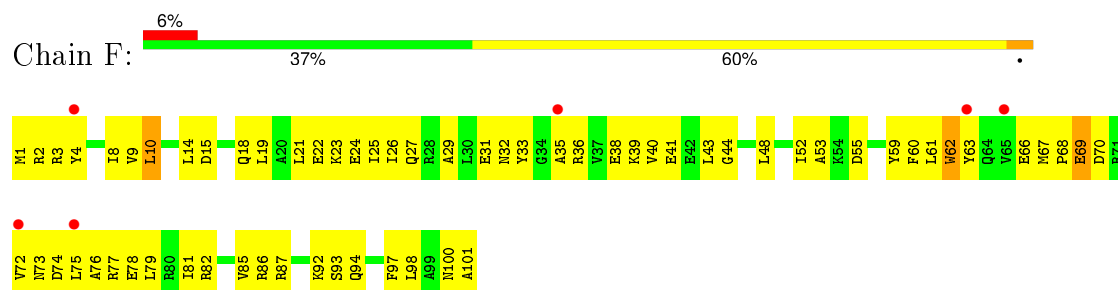


• Molecule 6: 30S RIBOSOMAL PROTEIN S5

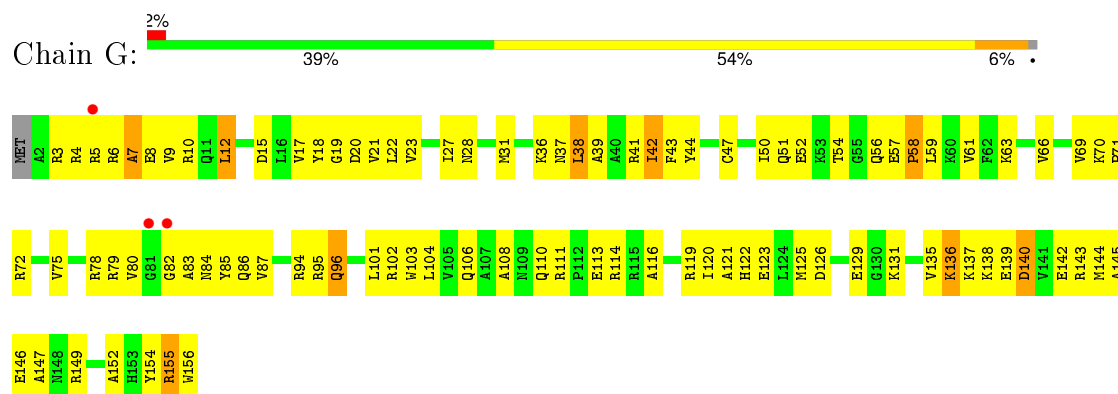
Chain E: 40% 48% 7%



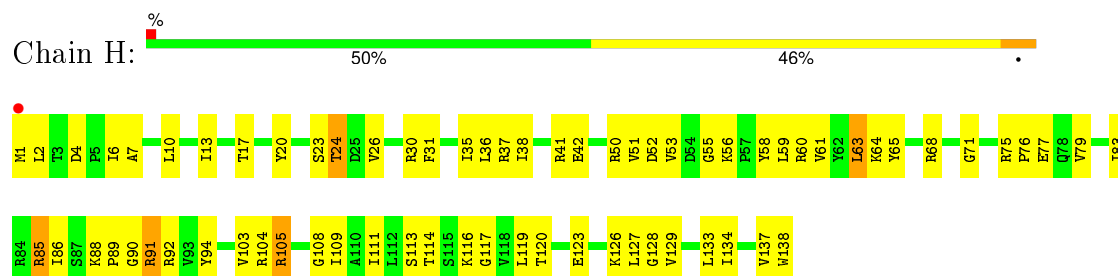
- Molecule 7: 30S RIBOSOMAL PROTEIN S6



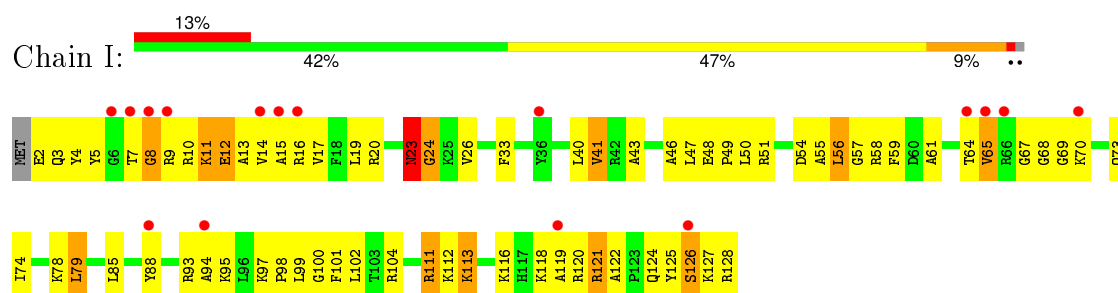
- Molecule 8: 30S RIBOSOMAL PROTEIN S7



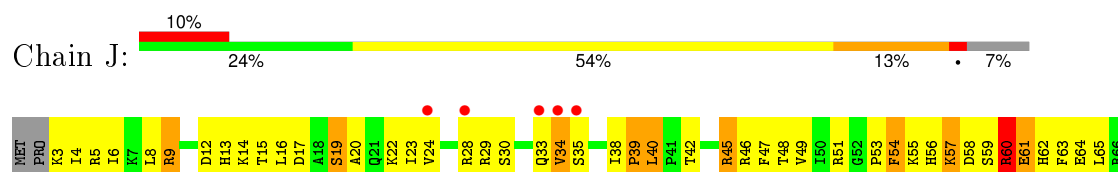
- Molecule 9: 30S RIBOSOMAL PROTEIN S8



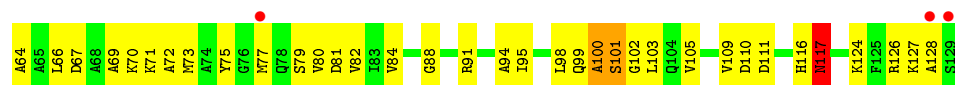
- Molecule 10: 30S RIBOSOMAL PROTEIN S9



- Molecule 11: 30S RIBOSOMAL PROTEIN S10



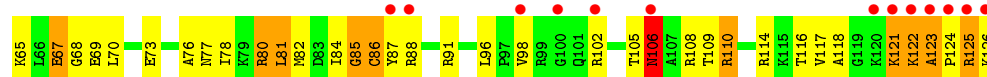
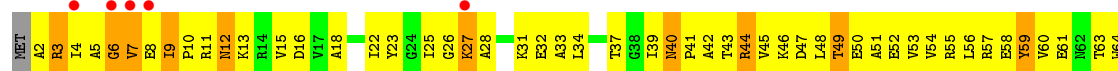
- Molecule 12: 30S RIBOSOMAL PROTEIN S11



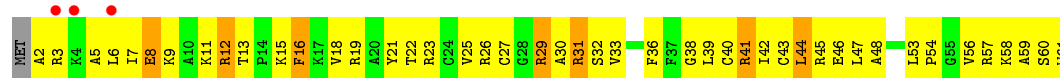
• Molecule 13: 30S RIBOSOMAL PROTEIN S12



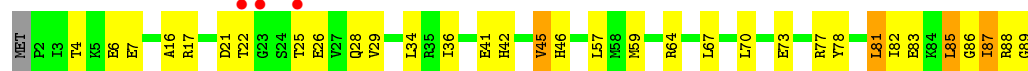
- Molecule 14: 30S RIBOSOMAL PROTEIN S13



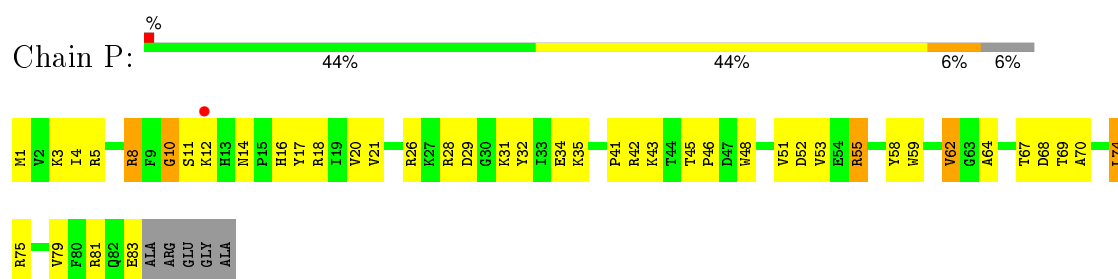
• Molecule 15: 30S RIBOSOMAL PROTEIN S14



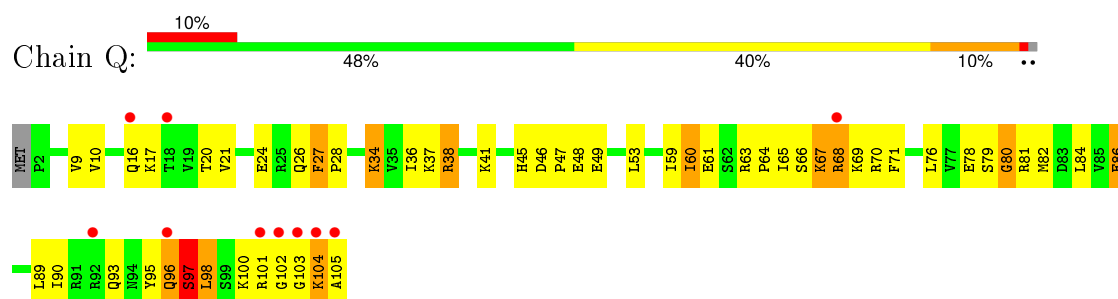
● Molecule 16: 30S RIBOSOMAL PROTEIN S15



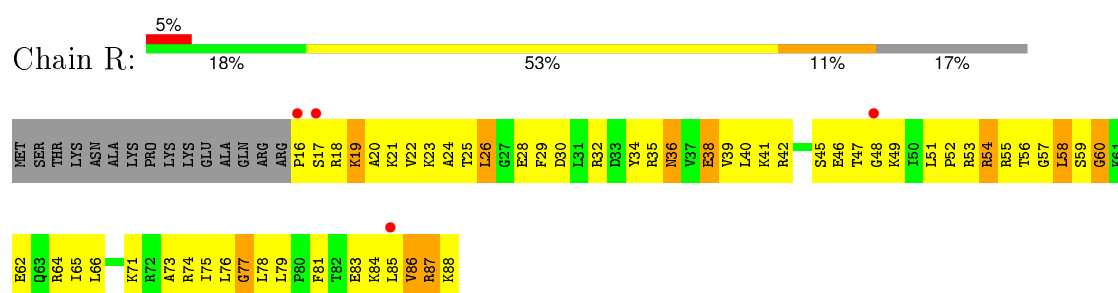
● Molecule 17: 30S RIBOSOMAL PROTEIN S16



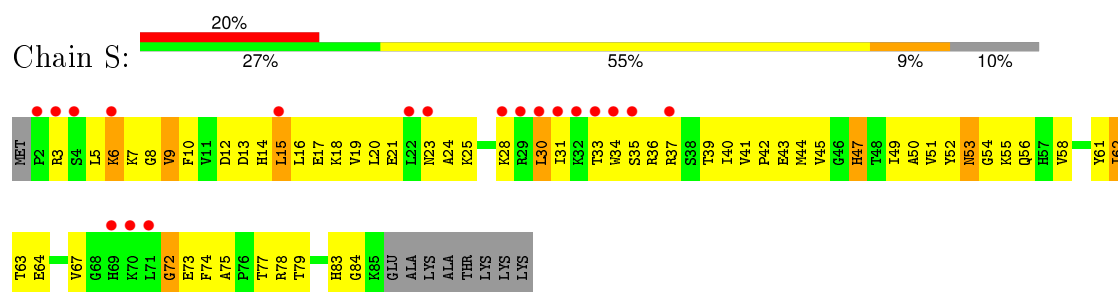
- Molecule 18: 30S RIBOSOMAL PROTEIN S17



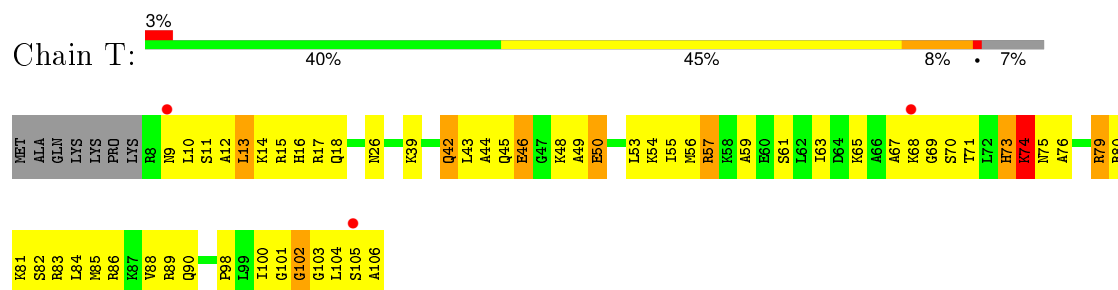
- Molecule 19: 30S RIBOSOMAL PROTEIN S18



- Molecule 20: 30S RIBOSOMAL PROTEIN S19



- Molecule 21: 30S RIBOSOMAL PROTEIN S20



- Molecule 22: 30S RIBOSOMAL PROTEIN THX



4 Data and refinement statistics

Property	Value	Source
Space group	P 41 21 2	Depositor
Cell constants a, b, c, α , β , γ	402.00Å 402.00Å 176.49Å 90.00° 90.00° 90.00°	Depositor
Resolution (Å)	95.35 – 3.00 97.50 – 3.00	Depositor EDS
% Data completeness (in resolution range)	91.1 (95.35-3.00) 91.0 (97.50-3.00)	Depositor EDS
R_{merge}	0.10	Depositor
R_{sym}	(Not available)	Depositor
$\langle I/\sigma(I) \rangle$ ¹	1.95 (at 3.01Å)	Xtriage
Refinement program	CNS	Depositor
R, R_{free}	0.221 , 0.255 0.213 , 0.241	Depositor DCC
R_{free} test set	13234 reflections (5.37%)	DCC
Wilson B-factor (Å ²)	72.5	Xtriage
Anisotropy	0.235	Xtriage
Bulk solvent k_{sol} (e/Å ³), B_{sol} (Å ²)	0.30 , 78.4	EDS
Estimated twinning fraction	No twinning to report.	Xtriage
L-test for twinning ²	$\langle L \rangle = 0.50$, $\langle L^2 \rangle = 0.34$	Xtriage
Outliers	0 of 259882 reflections	Xtriage
F_o, F_c correlation	0.87	EDS
Total number of atoms	51995	wwPDB-VP
Average B, all atoms (Å ²)	73.0	wwPDB-VP

Xtriage's analysis on translational NCS is as follows: *The largest off-origin peak in the Patterson function is 2.14% of the height of the origin peak. No significant pseudotranslation is detected.*

¹Intensities estimated from amplitudes.

²Theoretical values of $\langle |L| \rangle$, $\langle L^2 \rangle$ for acentric reflections are 0.5, 0.375 respectively for untwinned datasets, and 0.333, 0.2 for perfectly twinned datasets.

5 Model quality [i](#)

5.1 Standard geometry [i](#)

Bond lengths and bond angles in the following residue types are not validated in this section: SCM, ZN, MG, SRY, PAR

The Z score for a bond length (or angle) is the number of standard deviations the observed value is removed from the expected value. A bond length (or angle) with $|Z| > 5$ is considered an outlier worth inspection. RMSZ is the root-mean-square of all Z scores of the bond lengths (or angles).

Mol	Chain	Bond lengths		Bond angles	
		RMSZ	# Z >5	RMSZ	# Z >5
1	A	0.48	0/36259	0.74	39/56593 (0.1%)
2	X	1.41	1/128 (0.8%)	1.72	5/196 (2.6%)
3	B	0.34	0/1958	0.65	0/2640
4	C	0.37	0/1636	0.66	0/2205
5	D	0.38	0/1733	0.63	0/2318
6	E	0.46	0/1162	0.71	0/1564
7	F	0.32	0/856	0.60	0/1154
8	G	0.34	0/1276	0.60	0/1709
9	H	0.44	0/1136	0.71	0/1527
10	I	0.36	0/1029	0.64	0/1378
11	J	0.35	0/805	0.66	1/1082 (0.1%)
12	K	0.36	0/900	0.65	0/1213
13	L	0.41	0/991	0.79	1/1327 (0.1%)
14	M	0.32	0/1008	0.65	0/1347
15	N	0.39	0/501	0.69	0/664
16	O	0.36	0/745	0.62	1/992 (0.1%)
17	P	0.43	0/716	0.73	0/963
18	Q	0.45	0/870	0.77	1/1159 (0.1%)
19	R	0.37	0/603	0.64	0/799
20	S	0.31	0/689	0.72	2/926 (0.2%)
21	T	0.38	0/764	0.71	0/1006
22	V	0.42	0/212	0.65	0/277
All	All	0.45	1/55977 (0.0%)	0.73	50/83039 (0.1%)

Chiral center outliers are detected by calculating the chiral volume of a chiral center and verifying if the center is modelled as a planar moiety or with the opposite hand. A planarity outlier is detected by checking planarity of atoms in a peptide group, atoms in a mainchain group or atoms of a sidechain that are expected to be planar.

Mol	Chain	#Chirality outliers	#Planarity outliers
1	A	4	39

All (1) bond length outliers are listed below:

Mol	Chain	Res	Type	Atoms	Z	Observed(Å)	Ideal(Å)
2	X	1	U	C4-O4	13.50	1.34	1.23

The worst 5 of 50 bond angle outliers are listed below:

Mol	Chain	Res	Type	Atoms	Z	Observed(°)	Ideal(°)
2	X	1	U	N3-C4-C5	12.17	121.90	114.60
2	X	1	U	C2-N3-C4	-11.66	120.00	127.00
1	A	1498	U	C2'-C3'-O3'	9.77	130.99	109.50
2	X	1	U	C5-C4-O4	-9.60	120.14	125.90
1	A	559	A	C2'-C3'-O3'	9.52	130.44	109.50

All (4) chirality outliers are listed below:

Mol	Chain	Res	Type	Atom
1	A	115	G	C3'
1	A	559	A	C3'
1	A	1498	U	C3'
1	A	1528	U	C3'

5 of 39 planarity outliers are listed below:

Mol	Chain	Res	Type	Group
1	A	108	G	Sidechain
1	A	197	A	Sidechain
1	A	222	U	Sidechain
1	A	251	G	Sidechain
1	A	76	C	Sidechain

5.2 Too-close contacts

In the following table, the Non-H and H(model) columns list the number of non-hydrogen atoms and hydrogen atoms in the chain respectively. The H(added) column lists the number of hydrogen atoms added and optimized by MolProbity. The Clashes column lists the number of clashes within the asymmetric unit, whereas Symm-Clashes lists symmetry related clashes.

Mol	Chain	Non-H	H(model)	H(added)	Clashes	Symm-Clashes
1	A	32391	0	16348	1037	0
2	X	117	0	63	0	0
3	B	1923	0	1968	208	0
4	C	1612	0	1677	188	0

Continued on next page...

Continued from previous page...

Mol	Chain	Non-H	H(model)	H(added)	Clashes	Symm-Clashes
5	D	1703	0	1763	128	0
6	E	1146	0	1207	104	0
7	F	843	0	857	74	0
8	G	1257	0	1296	108	0
9	H	1116	0	1177	75	0
10	I	1011	0	1043	104	0
11	J	792	0	835	110	0
12	K	885	0	904	68	0
13	L	975	0	1062	90	0
14	M	997	0	1072	113	0
15	N	492	0	529	67	0
16	O	734	0	771	34	0
17	P	700	0	720	45	0
18	Q	857	0	930	88	0
19	R	597	0	668	83	0
20	S	674	0	699	72	0
21	T	762	0	859	73	0
22	V	208	0	221	22	0
23	A	42	0	45	4	0
24	A	94	0	0	0	0
24	D	1	0	0	0	0
24	H	1	0	0	0	0
25	D	1	0	0	0	0
25	N	1	0	0	0	0
26	A	23	0	24	2	0
27	A	40	0	37	5	0
All	All	51995	0	36775	2610	0

The all-atom clashscore is defined as the number of clashes found per 1000 atoms (including hydrogen atoms). The all-atom clashscore for this structure is 29.

The worst 5 of 2610 close contacts within the same asymmetric unit are listed below, sorted by their clash magnitude.

Atom-1	Atom-2	Interatomic distance (Å)	Clash overlap (Å)
1:A:243:A:H4'	1:A:244:U:H5'	1.30	1.13
5:D:23:GLY:HA3	5:D:112:VAL:HG12	1.31	1.12
11:J:51:ARG:HB2	11:J:59:SER:HB3	1.27	1.11
12:K:54:ARG:HH11	12:K:54:ARG:HB3	1.13	1.09
1:A:761:G:C2	18:Q:105:ALA:HA	1.88	1.08

There are no symmetry-related clashes.

5.3 Torsion angles

5.3.1 Protein backbone

In the following table, the Percentiles column shows the percent Ramachandran outliers of the chain as a percentile score with respect to all X-ray entries followed by that with respect to entries of similar resolution.

The Analysed column shows the number of residues for which the backbone conformation was analysed, and the total number of residues.

Mol	Chain	Analysed	Favoured	Allowed	Outliers	Percentiles	
3	B	235/256 (92%)	172 (73%)	43 (18%)	20 (8%)	1	5
4	C	204/239 (85%)	135 (66%)	43 (21%)	26 (13%)	0	1
5	D	206/209 (99%)	173 (84%)	25 (12%)	8 (4%)	4	21
6	E	148/162 (91%)	130 (88%)	16 (11%)	2 (1%)	14	51
7	F	99/101 (98%)	81 (82%)	14 (14%)	4 (4%)	4	21
8	G	153/156 (98%)	123 (80%)	25 (16%)	5 (3%)	5	26
9	H	136/138 (99%)	125 (92%)	10 (7%)	1 (1%)	26	70
10	I	125/128 (98%)	96 (77%)	18 (14%)	11 (9%)	1	4
11	J	96/105 (91%)	64 (67%)	18 (19%)	14 (15%)	0	1
12	K	117/129 (91%)	91 (78%)	19 (16%)	7 (6%)	2	11
13	L	123/135 (91%)	95 (77%)	19 (15%)	9 (7%)	1	6
14	M	123/126 (98%)	92 (75%)	14 (11%)	17 (14%)	0	1
15	N	58/61 (95%)	44 (76%)	11 (19%)	3 (5%)	2	15
16	O	86/89 (97%)	69 (80%)	12 (14%)	5 (6%)	2	12
17	P	81/88 (92%)	72 (89%)	8 (10%)	1 (1%)	16	56
18	Q	102/105 (97%)	86 (84%)	11 (11%)	5 (5%)	3	16
19	R	71/88 (81%)	49 (69%)	16 (22%)	6 (8%)	1	5
20	S	82/93 (88%)	60 (73%)	16 (20%)	6 (7%)	1	6
21	T	97/106 (92%)	77 (79%)	12 (12%)	8 (8%)	1	5
22	V	22/26 (85%)	17 (77%)	4 (18%)	1 (4%)	3	18
All	All	2364/2540 (93%)	1851 (78%)	354 (15%)	159 (7%)	1	8

5 of 159 Ramachandran outliers are listed below:

Mol	Chain	Res	Type
3	B	15	VAL

Continued on next page...

Continued from previous page...

Mol	Chain	Res	Type
3	B	16	HIS
3	B	17	PHE
3	B	21	ARG
3	B	124	SER

5.3.2 Protein sidechains ⓘ

In the following table, the Percentiles column shows the percent sidechain outliers of the chain as a percentile score with respect to all X-ray entries followed by that with respect to entries of similar resolution.

The Analysed column shows the number of residues for which the sidechain conformation was analysed, and the total number of residues.

Mol	Chain	Analysed	Rotameric	Outliers	Percentiles	
3	B	204/220 (93%)	193 (95%)	11 (5%)	27	66
4	C	160/188 (85%)	147 (92%)	13 (8%)	15	47
5	D	180/181 (99%)	169 (94%)	11 (6%)	23	61
6	E	115/123 (94%)	104 (90%)	11 (10%)	10	38
7	F	90/90 (100%)	88 (98%)	2 (2%)	60	88
8	G	126/127 (99%)	115 (91%)	11 (9%)	13	43
9	H	119/119 (100%)	113 (95%)	6 (5%)	30	70
10	I	98/99 (99%)	91 (93%)	7 (7%)	18	54
11	J	87/92 (95%)	80 (92%)	7 (8%)	15	47
12	K	90/99 (91%)	82 (91%)	8 (9%)	12	42
13	L	104/111 (94%)	98 (94%)	6 (6%)	25	63
14	M	100/101 (99%)	91 (91%)	9 (9%)	12	41
15	N	49/50 (98%)	43 (88%)	6 (12%)	6	25
16	O	79/80 (99%)	76 (96%)	3 (4%)	40	78
17	P	72/74 (97%)	67 (93%)	5 (7%)	19	56
18	Q	96/97 (99%)	88 (92%)	8 (8%)	14	46
19	R	64/77 (83%)	59 (92%)	5 (8%)	16	49
20	S	73/80 (91%)	69 (94%)	4 (6%)	27	65
21	T	76/82 (93%)	69 (91%)	7 (9%)	11	40
22	V	19/21 (90%)	19 (100%)	0	100	100

Continued on next page...

Continued from previous page...

Mol	Chain	Analysed	Rotameric	Outliers	Percentiles
All	All	2001/2111 (95%)	1861 (93%)	140 (7%)	19 55

5 of 140 residues with a non-rotameric sidechain are listed below:

Mol	Chain	Res	Type
9	H	92	ARG
11	J	95	GLU
20	S	15	LEU
10	I	2	GLU
10	I	121	ARG

Some sidechains can be flipped to improve hydrogen bonding and reduce clashes. 5 of 60 such sidechains are listed below:

Mol	Chain	Res	Type
7	F	57	GLN
8	G	106	GLN
19	R	36	ASN
8	G	37	ASN
10	I	23	ASN

5.3.3 RNA ⓘ

Mol	Chain	Analysed	Backbone Outliers	Pucker Outliers
1	A	1507/1522 (99%)	213 (14%)	88 (5%)
2	X	5/6 (83%)	0	0
All	All	1512/1528 (98%)	213 (14%)	88 (5%)

5 of 213 RNA backbone outliers are listed below:

Mol	Chain	Res	Type
1	A	6	G
1	A	8	A
1	A	9	G
1	A	30	U
1	A	31	G

5 of 88 RNA pucker outliers are listed below:

Mol	Chain	Res	Type
1	A	533	A

Continued on next page...

Continued from previous page...

Mol	Chain	Res	Type
1	A	960	U
1	A	1380	U
1	A	559	A
1	A	701	C

5.4 Non-standard residues in protein, DNA, RNA chains [i](#)

There are no non-standard protein/DNA/RNA residues in this entry.

5.5 Carbohydrates [i](#)

There are no carbohydrates in this entry.

5.6 Ligand geometry [i](#)

Of 101 ligands modelled in this entry, 98 are monoatomic - leaving 3 for Mogul analysis.

In the following table, the Counts columns list the number of bonds (or angles) for which Mogul statistics could be retrieved, the number of bonds (or angles) that are observed in the model and the number of bonds (or angles) that are defined in the chemical component dictionary. The Link column lists molecule types, if any, to which the group is linked. The Z score for a bond length (or angle) is the number of standard deviations the observed value is removed from the expected value. A bond length (or angle) with $|Z| > 2$ is considered an outlier worth inspection. RMSZ is the root-mean-square of all Z scores of the bond lengths (or angles).

Mol	Type	Chain	Res	Link	Bond lengths			Bond angles		
					Counts	RMSZ	# $ Z > 2$	Counts	RMSZ	# $ Z > 2$
23	PAR	A	1545	-	45,45,45	1.45	8 (17%)	59,67,67	1.19	4 (6%)
26	SCM	A	1633	-	23,25,25	1.19	2 (8%)	22,39,39	1.13	3 (13%)
27	SRY	A	1634	-	33,42,42	1.06	3 (9%)	36,63,63	1.35	3 (8%)

In the following table, the Chirals column lists the number of chiral outliers, the number of chiral centers analysed, the number of these observed in the model and the number defined in the chemical component dictionary. Similar counts are reported in the Torsion and Rings columns. '-' means no outliers of that kind were identified.

Mol	Type	Chain	Res	Link	Chirals	Torsions	Rings
23	PAR	A	1545	-	-	0/18/94/94	0/4/4/4
26	SCM	A	1633	-	-	0/4/57/57	0/3/3/3
27	SRY	A	1634	-	-	0/16/87/87	0/3/3/3

The worst 5 of 13 bond length outliers are listed below:

Mol	Chain	Res	Type	Atoms	Z	Observed(Å)	Ideal(Å)
26	A	1633	SCM	C5-C4	-3.24	1.51	1.54
27	A	1634	SRY	C23-N23	-2.62	1.43	1.47
26	A	1633	SCM	C10-N10	-2.09	1.43	1.47
23	A	1545	PAR	O54-C54	2.03	1.49	1.44
23	A	1545	PAR	C64-C54	2.13	1.57	1.52

The worst 5 of 10 bond angle outliers are listed below:

Mol	Chain	Res	Type	Atoms	Z	Observed(°)	Ideal(°)
27	A	1634	SRY	C13-O13-C22	-5.80	105.90	116.30
27	A	1634	SRY	C13-O53-C53	-3.20	107.54	113.75
26	A	1633	SCM	C2M-C2-C3	-2.97	108.13	113.45
27	A	1634	SRY	C12-O41-C41	-2.60	111.22	118.01
26	A	1633	SCM	C5-O1B-C7	-2.12	110.81	113.80

There are no chirality outliers.

There are no torsion outliers.

There are no ring outliers.

3 monomers are involved in 11 short contacts:

Mol	Chain	Res	Type	Clashes	Symm-Clashes
23	A	1545	PAR	4	0
26	A	1633	SCM	2	0
27	A	1634	SRY	5	0

5.7 Other polymers [i](#)

There are no such residues in this entry.

5.8 Polymer linkage issues [i](#)

There are no chain breaks in this entry.

6 Fit of model and data ⓘ

6.1 Protein, DNA and RNA chains ⓘ

In the following table, the column labelled ‘#RSRZ> 2’ contains the number (and percentage) of RSRZ outliers, followed by percent RSRZ outliers for the chain as percentile scores relative to all X-ray entries and entries of similar resolution. The OWAB column contains the minimum, median, 95th percentile and maximum values of the occupancy-weighted average B-factor per residue. The column labelled ‘Q< 0.9’ lists the number of (and percentage) of residues with an average occupancy less than 0.9.

Mol	Chain	Analysed	<RSRZ>	#RSRZ>2	OWAB(Å ²)	Q<0.9
1	A	1506/1522 (98%)	0.78	96 (6%) 23 8	34, 60, 137, 201	0
2	X	6/6 (100%)	1.44	2 (33%) 0 0	57, 71, 116, 118	0
3	B	237/256 (92%)	0.08	2 (0%) 87 67	35, 83, 162, 185	0
4	C	206/239 (86%)	0.02	1 (0%) 91 76	32, 79, 136, 190	0
5	D	208/209 (99%)	0.30	14 (6%) 21 7	40, 63, 114, 143	0
6	E	150/162 (92%)	0.17	1 (0%) 89 70	29, 52, 95, 146	0
7	F	101/101 (100%)	0.37	6 (5%) 26 10	49, 89, 138, 165	0
8	G	155/156 (99%)	-0.08	3 (1%) 70 41	40, 72, 141, 177	0
9	H	138/138 (100%)	0.07	1 (0%) 89 70	30, 51, 90, 148	0
10	I	127/128 (99%)	0.62	16 (12%) 5 2	33, 82, 137, 177	0
11	J	98/105 (93%)	0.52	10 (10%) 9 3	42, 109, 179, 201	0
12	K	119/129 (92%)	0.51	10 (8%) 14 5	40, 69, 125, 194	0
13	L	125/135 (92%)	0.24	3 (2%) 62 32	21, 59, 134, 182	0
14	M	125/126 (99%)	0.94	18 (14%) 3 1	47, 83, 146, 185	0
15	N	60/61 (98%)	0.29	3 (5%) 32 13	38, 73, 119, 200	0
16	O	88/89 (98%)	0.15	3 (3%) 49 21	39, 66, 127, 191	0
17	P	83/88 (94%)	0.13	1 (1%) 81 55	37, 53, 90, 159	0
18	Q	104/105 (99%)	0.74	10 (9%) 10 4	26, 58, 143, 201	0
19	R	73/88 (82%)	0.27	4 (5%) 29 11	43, 69, 129, 184	0
20	S	84/93 (90%)	1.27	19 (22%) 1 1	71, 96, 145, 201	0
21	T	99/106 (93%)	0.10	3 (3%) 54 25	39, 64, 119, 166	0
22	V	24/26 (92%)	1.03	2 (8%) 14 5	43, 68, 102, 119	0
All	All	3916/4068 (96%)	0.50	228 (5%) 26 10	21, 66, 142, 201	0

The worst 5 of 228 RSRZ outliers are listed below:

Mol	Chain	Res	Type	RSRZ
20	S	3	ARG	14.8
14	M	123	ALA	14.1
14	M	124	PRO	12.8
18	Q	102	GLY	11.6
1	A	1002	G	11.6

6.2 Non-standard residues in protein, DNA, RNA chains [i](#)

There are no non-standard protein/DNA/RNA residues in this entry.

6.3 Carbohydrates [i](#)

There are no carbohydrates in this entry.

6.4 Ligands [i](#)

In the following table, the Atoms column lists the number of modelled atoms in the group and the number defined in the chemical component dictionary. LLDF column lists the quality of electron density of the group with respect to its neighbouring residues in protein, DNA or RNA chains. The B-factors column lists the minimum, median, 95th percentile and maximum values of B factors of atoms in the group. The column labelled 'Q< 0.9' lists the number of atoms with occupancy less than 0.9.

Mol	Type	Chain	Res	Atoms	RSCC	RSR	LLDF	B-factors(Å ²)	Q<0.9
24	MG	A	1615	1/1	0.34	0.69	31.25	38,38,38,38	1
24	MG	A	1607	1/1	0.93	0.56	17.48	38,38,38,38	0
24	MG	A	1566	1/1	0.99	0.64	17.30	38,38,38,38	0
24	MG	A	1563	1/1	0.91	0.48	15.51	38,38,38,38	0
24	MG	A	1627	1/1	0.87	0.81	14.84	38,38,38,38	1
24	MG	A	211	1/1	0.64	0.41	13.73	38,38,38,38	1
24	MG	A	1558	1/1	0.98	0.52	12.25	38,38,38,38	0
24	MG	A	210	1/1	0.43	0.47	10.57	38,38,38,38	1
24	MG	A	1561	1/1	0.84	0.44	9.63	38,38,38,38	1
24	MG	A	1567	1/1	0.82	0.35	6.78	38,38,38,38	0
24	MG	A	1631	1/1	0.94	0.34	6.70	38,38,38,38	1
24	MG	A	1629	1/1	0.93	0.43	6.02	38,38,38,38	1
24	MG	A	1580	1/1	0.85	0.31	5.91	38,38,38,38	0
24	MG	A	1630	1/1	0.90	0.44	5.83	38,38,38,38	1
24	MG	A	1596	1/1	0.92	0.34	5.78	38,38,38,38	0
24	MG	A	1626	1/1	0.97	0.30	3.86	38,38,38,38	1
24	MG	D	215	1/1	0.89	0.35	3.37	38,38,38,38	0

Continued on next page...

Continued from previous page...

Mol	Type	Chain	Res	Atoms	RSCC	RSR	LLDF	B-factors(\AA^2)	Q<0.9
23	PAR	A	1545	42/42	0.92	0.24	3.27	23,23,23,23	0
24	MG	A	1547	1/1	0.93	0.29	3.01	38,38,38,38	0
24	MG	A	1604	1/1	0.91	0.34	2.76	38,38,38,38	0
24	MG	A	1608	1/1	0.97	0.42	2.37	38,38,38,38	1
24	MG	A	1614	1/1	0.93	0.44	1.49	38,38,38,38	1
24	MG	A	1577	1/1	0.91	0.40	1.43	38,38,38,38	0
24	MG	A	1578	1/1	0.97	0.25	0.01	38,38,38,38	0
25	ZN	N	190	1/1	0.99	0.21	0.01	47,47,47,47	1
25	ZN	D	300	1/1	0.97	0.31	0.01	47,47,47,47	0
24	MG	A	1554	1/1	0.96	0.29	-0.04	38,38,38,38	0
24	MG	A	1601	1/1	0.87	0.26	-0.11	38,38,38,38	0
24	MG	A	1600	1/1	0.83	0.23	-0.15	38,38,38,38	0
24	MG	A	1621	1/1	0.83	0.26	-0.22	38,38,38,38	1
27	SRY	A	1634	40/40	0.95	0.21	-0.52	23,23,23,23	0
26	SCM	A	1633	23/23	0.96	0.21	-0.75	23,23,23,23	0
24	MG	A	1620	1/1	0.80	0.15	-1.54	38,38,38,38	1
24	MG	A	1605	1/1	0.91	0.20	-1.61	38,38,38,38	0
24	MG	A	1589	1/1	0.94	0.23	-2.02	38,38,38,38	0
24	MG	A	1582	1/1	0.80	0.20	-2.10	38,38,38,38	1
24	MG	A	1602	1/1	0.86	0.10	-2.20	38,38,38,38	0
24	MG	A	214	1/1	0.93	0.20	-2.31	38,38,38,38	0
24	MG	A	1606	1/1	0.96	0.15	-2.55	38,38,38,38	0
24	MG	A	1593	1/1	0.89	0.20	-2.64	38,38,38,38	0
24	MG	A	1618	1/1	0.95	0.14	-2.92	38,38,38,38	1
24	MG	A	1576	1/1	0.96	0.07	-7.64	38,38,38,38	1
24	MG	A	1564	1/1	0.92	0.09	-7.82	38,38,38,38	0
24	MG	A	1550	1/1	0.73	0.40	-	38,38,38,38	1
24	MG	A	1565	1/1	0.86	0.43	-	38,38,38,38	1
24	MG	A	1552	1/1	0.89	0.35	-	38,38,38,38	0
24	MG	A	1560	1/1	0.89	0.42	-	38,38,38,38	0
24	MG	A	1611	1/1	0.89	0.19	-	38,38,38,38	1
24	MG	A	1546	1/1	0.89	0.18	-	38,38,38,38	1
24	MG	A	1551	1/1	0.85	0.94	-	38,38,38,38	1
24	MG	A	1571	1/1	0.70	0.36	-	38,38,38,38	1
24	MG	A	1598	1/1	0.83	0.37	-	38,38,38,38	0
24	MG	A	1562	1/1	0.99	0.69	-	38,38,38,38	0
24	MG	A	1569	1/1	0.96	0.39	-	38,38,38,38	0
24	MG	A	1624	1/1	0.97	0.52	-	38,38,38,38	1
24	MG	A	1555	1/1	0.96	0.32	-	38,38,38,38	0
24	MG	A	1617	1/1	0.97	0.15	-	38,38,38,38	1
24	MG	A	1591	1/1	0.84	0.51	-	38,38,38,38	1
24	MG	A	1587	1/1	0.94	0.40	-	38,38,38,38	0

Continued on next page...

Continued from previous page...

Mol	Type	Chain	Res	Atoms	RSCC	RSR	LLDF	B-factors(\AA^2)	Q<0.9
24	MG	A	1570	1/1	1.00	0.21	-	38,38,38,38	1
24	MG	A	1557	1/1	0.73	0.48	-	38,38,38,38	1
24	MG	A	1597	1/1	0.95	0.59	-	38,38,38,38	1
24	MG	A	1623	1/1	1.00	0.37	-	38,38,38,38	1
24	MG	A	1619	1/1	0.74	0.61	-	38,38,38,38	1
24	MG	A	1572	1/1	0.96	0.43	-	38,38,38,38	0
24	MG	A	1616	1/1	0.81	1.00	-	38,38,38,38	1
24	MG	A	1613	1/1	0.81	0.19	-	38,38,38,38	1
24	MG	A	86	1/1	0.97	0.30	-	38,38,38,38	0
24	MG	A	1553	1/1	0.92	0.21	-	38,38,38,38	1
24	MG	A	1610	1/1	0.83	0.31	-	38,38,38,38	1
24	MG	A	1568	1/1	0.94	0.46	-	38,38,38,38	0
24	MG	A	71	1/1	0.92	0.51	-	38,38,38,38	0
24	MG	A	1574	1/1	0.98	0.50	-	38,38,38,38	0
24	MG	A	1590	1/1	0.96	0.28	-	38,38,38,38	1
24	MG	A	212	1/1	0.78	0.74	-	38,38,38,38	1
24	MG	A	1628	1/1	0.95	0.45	-	38,38,38,38	1
24	MG	A	1612	1/1	0.90	0.16	-	38,38,38,38	0
24	MG	A	1559	1/1	0.96	0.34	-	38,38,38,38	0
24	MG	A	1632	1/1	0.96	0.40	-	38,38,38,38	1
24	MG	A	1599	1/1	0.97	0.33	-	38,38,38,38	1
24	MG	A	1556	1/1	0.98	0.23	-	38,38,38,38	0
24	MG	A	1588	1/1	0.95	0.26	-	38,38,38,38	0
24	MG	A	1592	1/1	0.96	0.60	-	38,38,38,38	1
24	MG	A	1585	1/1	0.97	0.46	-	38,38,38,38	0
24	MG	H	213	1/1	0.92	0.61	-	38,38,38,38	1
24	MG	A	1609	1/1	0.93	0.26	-	38,38,38,38	0
24	MG	A	1575	1/1	0.96	0.38	-	38,38,38,38	0
24	MG	A	1573	1/1	0.78	0.78	-	38,38,38,38	1
24	MG	A	1594	1/1	0.91	0.31	-	38,38,38,38	0
24	MG	A	1549	1/1	0.94	0.34	-	38,38,38,38	0
24	MG	A	87	1/1	0.98	0.45	-	38,38,38,38	1
24	MG	A	1581	1/1	0.94	0.27	-	38,38,38,38	0
24	MG	A	1579	1/1	0.95	0.30	-	38,38,38,38	0
24	MG	A	1583	1/1	0.41	1.11	-	38,38,38,38	1
24	MG	A	1586	1/1	0.50	0.41	-	38,38,38,38	1
24	MG	A	1595	1/1	0.91	0.29	-	38,38,38,38	0
24	MG	A	1584	1/1	0.95	0.11	-	38,38,38,38	1
24	MG	A	1603	1/1	0.99	0.41	-	38,38,38,38	0
24	MG	A	1622	1/1	0.99	0.30	-	38,38,38,38	1
24	MG	A	1548	1/1	0.97	0.35	-	38,38,38,38	0
24	MG	A	1625	1/1	0.98	0.34	-	38,38,38,38	1

6.5 Other polymers [i](#)

There are no such residues in this entry.