



Full wwPDB X-ray Structure Validation Report ⓘ

Jan 31, 2016 – 07:27 PM GMT

PDB ID : 1FOP
Title : BOVINE ENDOTHELIAL NITRIC OXIDE SYNTHASE HEME DOMAIN
COMPLEXED WITH L-ARG AND NO(H4B-BOUND)
Authors : Raman, C.S.; Li, H.; Martasek, P.; Masters, B.S.S.; Poulos, T.L.
Deposited on : 2000-08-28
Resolution : 2.30 Å(reported)

This is a Full wwPDB X-ray Structure Validation Report for a publicly released PDB entry.
We welcome your comments at validation@mail.wwpdb.org
A user guide is available at
<http://wwpdb.org/validation/2016/XrayValidationReportHelp>
with specific help available everywhere you see the ⓘ symbol.

The following versions of software and data (see [references ⓘ](#)) were used in the production of this report:

MolProbity : 4.02b-467
Mogul : 1.7 (RC4), CSD as536be (2015)
Xtriage (Phenix) : 1.9-1692
EDS : rb-20026688
Percentile statistics : 20151230.v01 (using entries in the PDB archive December 30th 2015)
Refmac : 5.8.0135
CCP4 : 6.5.0
Ideal geometry (proteins) : Engh & Huber (2001)
Ideal geometry (DNA, RNA) : Parkinson et al. (1996)
Validation Pipeline (wwPDB-VP) : trunk26865

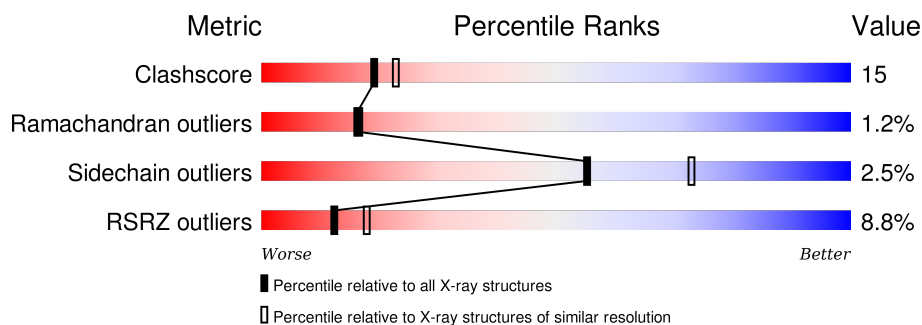
1 Overall quality at a glance

The following experimental techniques were used to determine the structure:

X-RAY DIFFRACTION

The reported resolution of this entry is 2.30 Å.

Percentile scores (ranging between 0-100) for global validation metrics of the entry are shown in the following graphic. The table shows the number of entries on which the scores are based.



Metric	Whole archive (#Entries)	Similar resolution (#Entries, resolution range(Å))
Clashscore	102246	4452 (2.30-2.30)
Ramachandran outliers	100387	4410 (2.30-2.30)
Sidechain outliers	100360	4409 (2.30-2.30)
RSRZ outliers	91569	3857 (2.30-2.30)

The table below summarises the geometric issues observed across the polymeric chains and their fit to the electron density. The red, orange, yellow and green segments on the lower bar indicate the fraction of residues that contain outliers for ≥ 3 , 2, 1 and 0 types of geometric quality criteria. A grey segment represents the fraction of residues that are not modelled. The numeric value for each fraction is indicated below the corresponding segment, with a dot representing fractions $\leq 5\%$. The upper red bar (where present) indicates the fraction of residues that have poor fit to the electron density. The numeric value is given above the bar.

Mol	Chain	Length	Quality of chain
1	A	444	<div> <div>9%</div> <div>66%</div> <div>25%</div> <div>6%</div> </div>
1	B	444	<div> <div>8%</div> <div>62%</div> <div>29%</div> <div>7%</div> </div>

The following table lists non-polymeric compounds, carbohydrate monomers and non-standard residues in protein, DNA, RNA chains that are outliers for geometric or electron-density-fit criteria:

Mol	Type	Chain	Res	Chirality	Geometry	Clashes	Electron density
3	ACT	A	1860	-	-	X	X
8	ARG	A	1700	-	-	-	X

Continued on next page...

Continued from previous page...

Mol	Type	Chain	Res	Chirality	Geometry	Clashes	Electron density
8	ARG	B	2700	-	-	-	X
9	GOL	A	1880	-	-	-	X
9	GOL	B	2880	-	-	-	X

2 Entry composition [i](#)

There are 10 unique types of molecules in this entry. The entry contains 7047 atoms, of which 0 are hydrogens and 0 are deuteriums.

In the tables below, the ZeroOcc column contains the number of atoms modelled with zero occupancy, the AltConf column contains the number of residues with at least one atom in alternate conformation and the Trace column contains the number of residues modelled with at most 2 atoms.

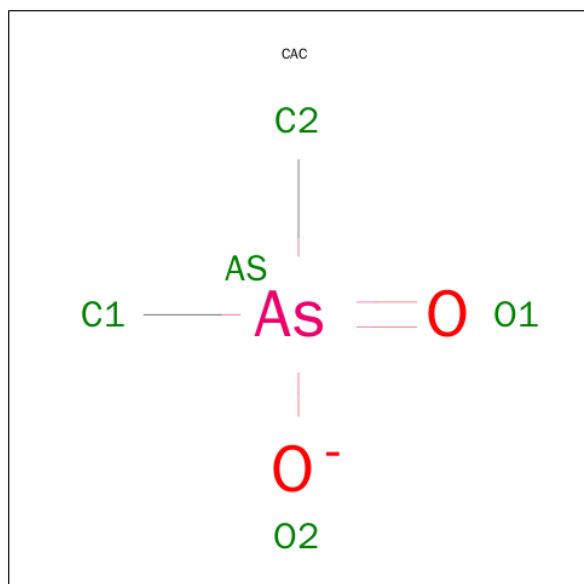
- Molecule 1 is a protein called NITRIC-OXIDE SYNTHASE.

Mol	Chain	Residues	Atoms					ZeroOcc	AltConf	Trace
1	A	416	Total	C	N	O	S	0	0	0
			3302	2099	584	603	16			
1	B	414	Total	C	N	O	S	0	0	0
			3291	2092	582	601	16			

There are 2 discrepancies between the modelled and reference sequences:

Chain	Residue	Modelled	Actual	Comment	Reference
A	100	ARG	CYS	CONFLICT	UNP P29473
B	100	ARG	CYS	CONFLICT	UNP P29473

- Molecule 2 is CACODYLATE ION (three-letter code: CAC) (formula: $\text{C}_2\text{H}_6\text{AsO}_2$).



Mol	Chain	Residues	Atoms		ZeroOcc	AltConf
2	A	1	Total	As C	0	0
			3	1 2		

Continued on next page...

Continued from previous page...

Mol	Chain	Residues	Atoms			ZeroOcc	AltConf
2	B	1	Total	As	C	0	0
			3	1	2		

- Molecule 3 is ACETATE ION (three-letter code: ACT) (formula: $C_2H_3O_2$).



Mol	Chain	Residues	Atoms			ZeroOcc	AltConf
3	A	1	Total	C	O	0	0
			4	2	2		
3	B	1	Total	C	O	0	0
			4	2	2		

- Molecule 4 is ZINC ION (three-letter code: ZN) (formula: Zn).

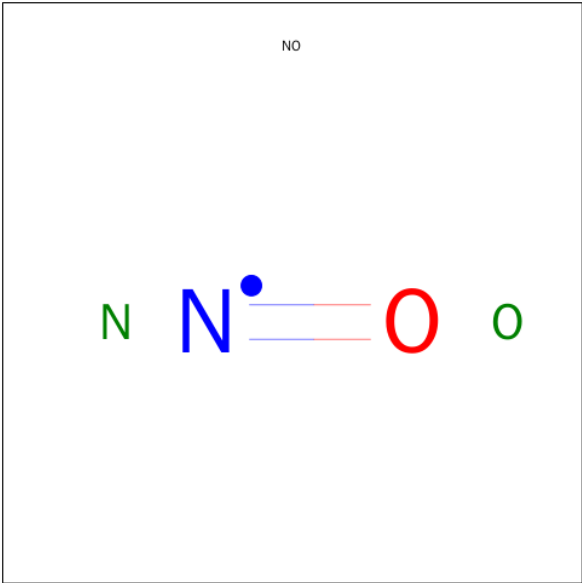
Mol	Chain	Residues	Atoms		ZeroOcc	AltConf
4	B	1	Total	Zn	0	0
			1	1		

- Molecule 5 is PROTOPORPHYRIN IX CONTAINING FE (three-letter code: HEM) (formula: $C_{34}H_{32}FeN_4O_4$).



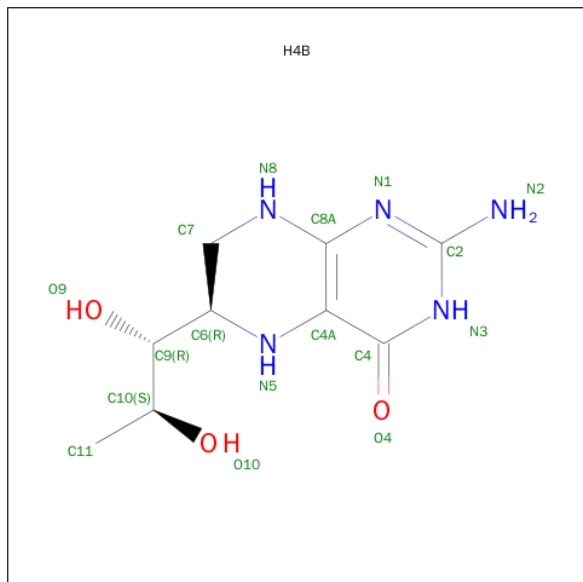
Mol	Chain	Residues	Atoms					ZeroOcc	AltConf
5	A	1	Total	C	Fe	N	O	0	0
			43	34	1	4	4		
5	B	1	Total	C	Fe	N	O	0	0
			43	34	1	4	4		

- Molecule 6 is NITRIC OXIDE (three-letter code: NO) (formula: NO).



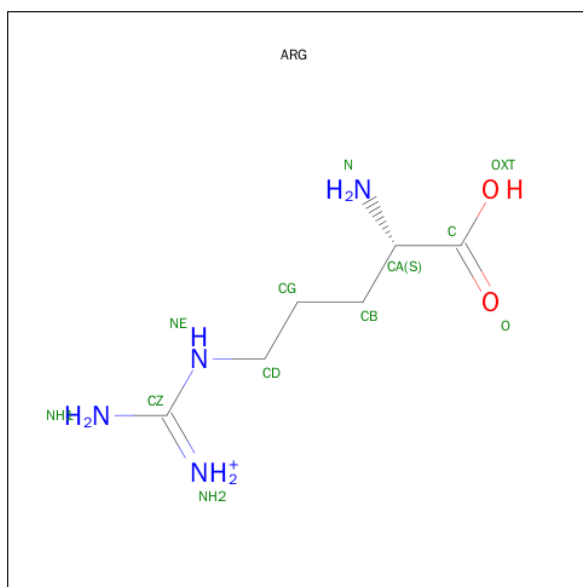
Mol	Chain	Residues	Atoms			ZeroOcc	AltConf
6	A	1	Total	N	O	0	0
			2	1	1		
6	B	1	Total	N	O	0	0
			2	1	1		

- Molecule 7 is 5,6,7,8-TETRAHYDROBIOPTERIN (three-letter code: H4B) (formula: $C_9H_{15}N_5O_3$).



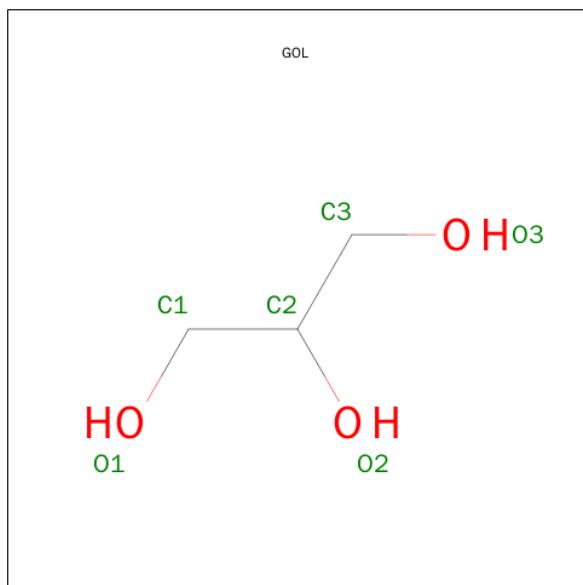
Mol	Chain	Residues	Atoms				ZeroOcc	AltConf
7	A	1	Total	C	N	O	0	0
			17	9	5	3		
7	B	1	Total	C	N	O	0	0
			17	9	5	3		

- Molecule 8 is ARGinine (three-letter code: ARG) (formula: $C_6H_{15}N_4O_2$).



Mol	Chain	Residues	Atoms				ZeroOcc	AltConf
8	A	1	Total	C	N	O	0	0
			12	6	4	2		
8	B	1	Total	C	N	O	0	0
			12	6	4	2		

- Molecule 9 is GLYCEROL (three-letter code: GOL) (formula: $C_3H_8O_3$).



Mol	Chain	Residues	Atoms			ZeroOcc	AltConf
9	A	1	Total	C	O	0	0
			6	3	3		
9	B	1	Total	C	O	0	0
			6	3	3		

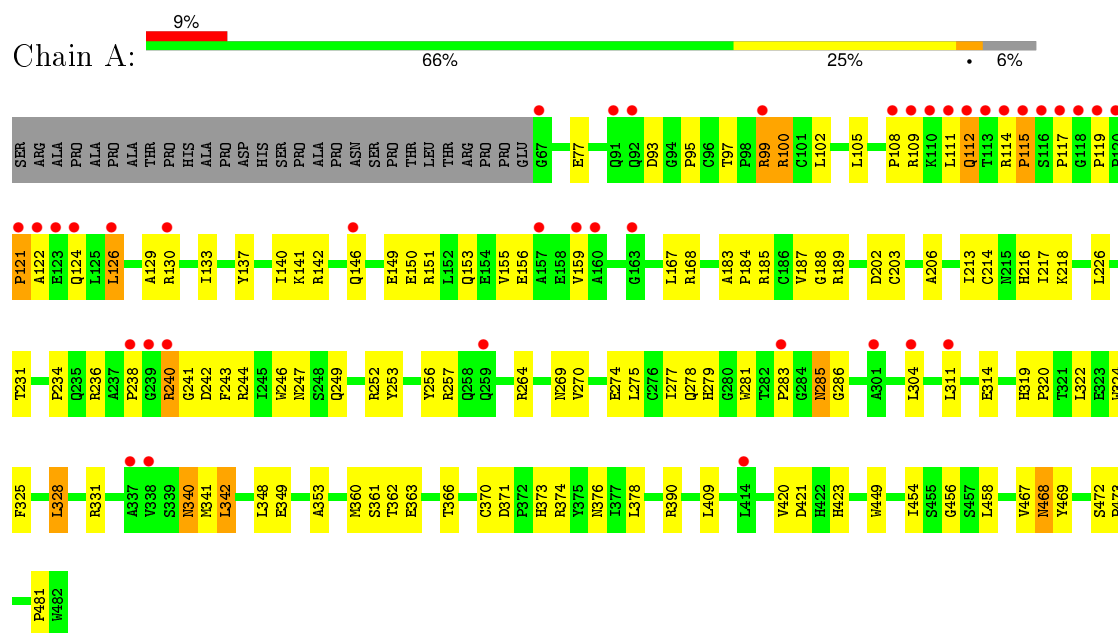
- Molecule 10 is water.

Mol	Chain	Residues	Atoms		ZeroOcc	AltConf
10	A	144	Total	O	0	0
			144	144		
10	B	135	Total	O	0	0
			135	135		

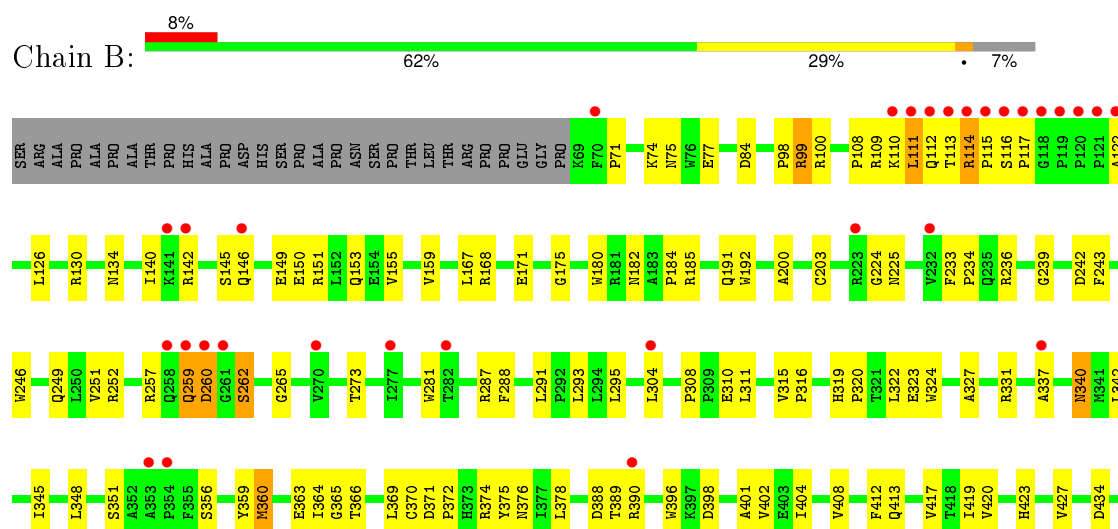
3 Residue-property plots

These plots are drawn for all protein, RNA and DNA chains in the entry. The first graphic for a chain summarises the proportions of errors displayed in the second graphic. The second graphic shows the sequence view annotated by issues in geometry and electron density. Residues are color-coded according to the number of geometric quality criteria for which they contain at least one outlier: green = 0, yellow = 1, orange = 2 and red = 3 or more. A red dot above a residue indicates a poor fit to the electron density ($RSRZ > 2$). Stretches of 2 or more consecutive residues without any outlier are shown as a green connector. Residues present in the sample, but not in the model, are shown in grey.

• Molecule 1: NITRIC-OXIDE SYNTHASE



• Molecule 1: NITRIC-OXIDE SYNTHASE





4 Data and refinement statistics

Property	Value	Source
Space group	P 21 21 21	Depositor
Cell constants a, b, c, α , β , γ	58.55Å 106.25Å 156.74Å 90.00° 90.00° 90.00°	Depositor
Resolution (Å)	39.19 – 2.30 39.19 – 2.29	Depositor EDS
% Data completeness (in resolution range)	78.5 (39.19-2.30) 83.7 (39.19-2.29)	Depositor EDS
R_{merge}	0.07	Depositor
R_{sym}	(Not available)	Depositor
$\langle I/\sigma(I) \rangle$ ¹	1.94 (at 2.29Å)	Xtriage
Refinement program	CNS 1.0	Depositor
R, R_{free}	0.220 , 0.277 0.228 , (Not available)	Depositor DCC
R_{free} test set	No test flags present.	DCC
Wilson B-factor (Å ²)	36.5	Xtriage
Anisotropy	0.479	Xtriage
Bulk solvent k_{sol} (e/Å ³), B_{sol} (Å ²)	0.35 , 46.3	EDS
Estimated twinning fraction	No twinning to report.	Xtriage
L-test for twinning ²	$\langle L \rangle = 0.50$, $\langle L^2 \rangle = 0.34$	Xtriage
Outliers	0 of 43784 reflections	Xtriage
F_o, F_c correlation	0.94	EDS
Total number of atoms	7047	wwPDB-VP
Average B, all atoms (Å ²)	50.0	wwPDB-VP

Xtriage's analysis on translational NCS is as follows: *The largest off-origin peak in the Patterson function is 3.29% of the height of the origin peak. No significant pseudotranslation is detected.*

¹Intensities estimated from amplitudes.

²Theoretical values of $\langle |L| \rangle$, $\langle L^2 \rangle$ for acentric reflections are 0.5, 0.375 respectively for untwinned datasets, and 0.333, 0.2 for perfectly twinned datasets.

5 Model quality [i](#)

5.1 Standard geometry [i](#)

Bond lengths and bond angles in the following residue types are not validated in this section: GOL, ZN, H4B, NO, ACT, CAC, HEM

The Z score for a bond length (or angle) is the number of standard deviations the observed value is removed from the expected value. A bond length (or angle) with $|Z| > 5$ is considered an outlier worth inspection. RMSZ is the root-mean-square of all Z scores of the bond lengths (or angles).

Mol	Chain	Bond lengths		Bond angles	
		RMSZ	$\# Z > 5$	RMSZ	$\# Z > 5$
1	A	0.38	0/3397	0.62	0/4631
1	B	0.37	0/3385	0.62	2/4614 (0.0%)
All	All	0.37	0/6782	0.62	2/9245 (0.0%)

There are no bond length outliers.

All (2) bond angle outliers are listed below:

Mol	Chain	Res	Type	Atoms	Z	Observed(°)	Ideal(°)
1	B	243	PHE	N-CA-C	-5.19	96.98	111.00
1	B	360	MET	N-CA-C	-5.00	97.49	111.00

There are no chirality outliers.

There are no planarity outliers.

5.2 Too-close contacts [i](#)

In the following table, the Non-H and H(model) columns list the number of non-hydrogen atoms and hydrogen atoms in the chain respectively. The H(added) column lists the number of hydrogen atoms added and optimized by MolProbity. The Clashes column lists the number of clashes within the asymmetric unit, whereas Symm-Clashes lists symmetry related clashes.

Mol	Chain	Non-H	H(model)	H(added)	Clashes	Symm-Clashes
1	A	3302	0	3215	102	0
1	B	3291	0	3205	102	0
2	A	3	0	0	0	0
2	B	3	0	0	0	0
3	A	4	0	3	2	0
3	B	4	0	3	1	0
4	B	1	0	0	0	0

Continued on next page...

Continued from previous page...

Mol	Chain	Non-H	H(model)	H(added)	Clashes	Symm-Clashes
5	A	43	0	30	2	0
5	B	43	0	30	2	0
6	A	2	0	0	1	0
6	B	2	0	0	0	0
7	A	17	0	15	1	0
7	B	17	0	15	1	0
8	A	12	0	12	2	0
8	B	12	0	12	1	0
9	A	6	0	8	0	0
9	B	6	0	8	0	0
10	A	144	0	0	4	0
10	B	135	0	0	4	0
All	All	7047	0	6556	202	0

The all-atom clashscore is defined as the number of clashes found per 1000 atoms (including hydrogen atoms). The all-atom clashscore for this structure is 15.

All (202) close contacts within the same asymmetric unit are listed below, sorted by their clash magnitude.

Atom-1	Atom-2	Interatomic distance (Å)	Clash overlap (Å)
1:A:99:ARG:HB2	1:A:99:ARG:HH11	1.28	0.97
1:A:119:PRO:HG3	1:A:238:PRO:HB3	1.44	0.97
1:B:259:GLN:HG2	1:B:260:ASP:H	1.30	0.95
1:B:340:ASN:HD22	1:B:340:ASN:H	1.24	0.85
1:B:378:LEU:HB2	10:B:2964:HOH:O	1.76	0.85
1:A:281:TRP:HB2	1:A:304:LEU:HD21	1.59	0.84
1:A:285:ASN:C	1:A:285:ASN:HD22	1.82	0.83
1:A:264:ARG:HG3	1:A:264:ARG:HH11	1.48	0.77
1:B:108:PRO:CB	1:B:111:LEU:HB2	2.17	0.74
1:A:126:LEU:HD11	1:A:156:GLU:HG2	1.69	0.74
1:B:251:VAL:O	1:B:252:ARG:HG2	1.91	0.70
1:B:259:GLN:HG2	1:B:260:ASP:N	2.04	0.70
1:A:115:PRO:O	1:A:117:PRO:HD3	1.93	0.69
1:B:388:ASP:OD1	1:B:390:ARG:HB3	1.94	0.67
1:A:285:ASN:C	1:A:285:ASN:ND2	2.49	0.66
1:B:293:LEU:HB3	1:B:295:LEU:HD21	1.78	0.65
1:B:423:HIS:O	1:B:427:VAL:HG23	1.97	0.65
1:B:114:ARG:HH11	1:B:114:ARG:HA	1.61	0.64
1:B:182:ASN:O	1:B:184:PRO:HD3	1.98	0.63
1:B:108:PRO:HB3	1:B:111:LEU:HB2	1.78	0.63
1:A:111:LEU:HD12	1:A:111:LEU:H	1.62	0.63

Continued on next page...

Continued from previous page...

Atom-1	Atom-2	Interatomic distance (Å)	Clash overlap (Å)
1:A:149:GLU:O	1:A:153:GLN:HG2	1.99	0.62
1:A:99:ARG:NH1	1:A:99:ARG:HB2	2.09	0.62
1:A:126:LEU:HD12	1:A:130:ARG:HD2	1.81	0.61
1:A:151:ARG:HD3	1:A:168:ARG:CZ	2.30	0.61
1:B:99:ARG:HB2	1:B:99:ARG:HH11	1.66	0.61
1:B:471:LEU:O	1:B:474:ALA:HB2	2.01	0.60
1:B:110:LYS:C	1:B:112:GLN:H	2.04	0.60
1:A:184:PRO:HB3	1:A:468:ASN:HD21	1.67	0.60
1:B:455:SER:HB3	1:B:458:LEU:HD12	1.84	0.59
1:B:151:ARG:O	1:B:155:VAL:HG23	2.03	0.59
1:B:110:LYS:O	1:B:112:GLN:N	2.35	0.59
1:B:149:GLU:O	1:B:153:GLN:HG3	2.02	0.59
1:A:234:PRO:HB2	1:A:243:PHE:CE1	2.39	0.58
1:B:122:ALA:O	1:B:126:LEU:HB2	2.02	0.58
1:B:449:TRP:HA	7:B:2600:H4B:N1	2.18	0.58
1:B:109:ARG:HB2	10:B:2969:HOH:O	2.04	0.58
1:A:218:LYS:HG2	1:A:311:LEU:HD22	1.85	0.57
1:B:389:THR:HA	1:B:396:TRP:CD1	2.39	0.57
1:A:151:ARG:HD3	1:A:168:ARG:NH2	2.20	0.57
1:A:378:LEU:HB2	10:A:2079:HOH:O	2.05	0.57
1:A:126:LEU:HD11	1:A:156:GLU:CG	2.35	0.57
1:B:71:PRO:HG2	1:B:84:ASP:HB3	1.87	0.57
1:B:259:GLN:HG2	1:B:260:ASP:OD1	2.04	0.57
1:B:265:GLY:HA2	1:B:287:ARG:HA	1.88	0.56
1:A:188:GLY:HA2	3:A:1860:ACT:CH3	2.35	0.56
1:B:175:GLY:HA3	1:B:345:ILE:HD13	1.88	0.56
1:A:146:GLN:O	1:A:150:GLU:HG3	2.06	0.56
1:A:270:VAL:O	1:A:274:GLU:HG3	2.07	0.55
1:B:446:ASP:O	1:B:450:ILE:HG12	2.06	0.55
1:A:246:TRP:CD1	1:A:481:PRO:HG3	2.43	0.54
1:B:363:GLU:OE2	8:B:2700:ARG:HB2	2.08	0.54
1:A:264:ARG:NH1	1:A:264:ARG:HG3	2.19	0.54
1:A:322:LEU:HD13	1:A:324:TRP:CZ2	2.43	0.54
1:B:140:ILE:O	1:B:142:ARG:HG2	2.08	0.54
1:A:109:ARG:HG2	1:A:109:ARG:HH11	1.73	0.54
1:A:472:SER:HA	1:A:473:PRO:O	2.09	0.53
1:A:363:GLU:OE2	8:A:1700:ARG:HB2	2.08	0.53
1:B:249:GLN:HB2	1:B:252:ARG:HD2	1.90	0.53
1:A:121:PRO:O	1:A:124:GLN:N	2.41	0.53
1:A:472:SER:HA	1:A:473:PRO:C	2.29	0.53
1:A:340:ASN:HD22	1:A:340:ASN:H	1.55	0.53

Continued on next page...

Continued from previous page...

Atom-1	Atom-2	Interatomic distance (Å)	Clash overlap (Å)
1:A:137:TYR:HA	1:A:140:ILE:HG12	1.90	0.53
1:A:458:LEU:HD11	1:B:401:ALA:CB	2.40	0.52
1:B:233:PHE:HB3	1:B:234:PRO:CD	2.39	0.52
1:A:244:ARG:NH2	1:A:481:PRO:HD3	2.25	0.52
1:B:472:SER:HA	1:B:473:PRO:C	2.30	0.52
1:A:105:LEU:HA	1:B:465:GLU:HG2	1.92	0.52
1:B:108:PRO:HG3	10:B:2983:HOH:O	2.10	0.52
1:B:404:ILE:O	1:B:408:VAL:HG23	2.10	0.52
1:A:111:LEU:HD22	10:A:2050:HOH:O	2.10	0.52
1:B:434:ASP:OD1	1:B:438:LYS:HE3	2.10	0.51
1:A:240:ARG:HD3	1:A:241:GLY:O	2.11	0.51
1:A:366:THR:HG21	1:A:454:ILE:HG23	1.93	0.51
1:A:109:ARG:HG2	1:A:109:ARG:NH1	2.26	0.51
1:A:458:LEU:HD11	1:B:401:ALA:HB2	1.92	0.51
1:B:310:GLU:CD	1:B:310:GLU:H	2.14	0.51
1:A:188:GLY:HA2	3:A:1860:ACT:H3	1.91	0.51
1:B:457:SER:HA	1:B:462:PHE:CG	2.46	0.51
1:A:114:ARG:HG3	1:A:115:PRO:HD2	1.92	0.50
1:B:337:ALA:HB2	1:B:356:SER:HB3	1.92	0.50
1:A:249:GLN:HB2	1:A:252:ARG:HG2	1.92	0.50
1:B:340:ASN:N	1:B:340:ASN:HD22	1.95	0.49
1:A:146:GLN:HG2	1:A:150:GLU:OE2	2.12	0.49
1:B:342:LEU:HD23	1:B:342:LEU:C	2.33	0.49
1:B:340:ASN:H	1:B:340:ASN:ND2	2.03	0.49
1:A:325:PHE:O	1:A:328:LEU:HB2	2.12	0.49
1:A:342:LEU:HD11	1:A:349:GLU:HB3	1.95	0.49
1:B:233:PHE:HB3	1:B:234:PRO:HD2	1.94	0.49
1:A:141:LYS:O	1:A:142:ARG:NH1	2.45	0.49
1:B:251:VAL:C	1:B:252:ARG:HG2	2.32	0.49
1:B:116:SER:N	1:B:236:ARG:NH2	2.59	0.49
1:A:360:MET:CE	1:A:362:THR:OG1	2.61	0.49
1:A:253:TYR:O	1:A:269:ASN:ND2	2.43	0.49
1:B:308:PRO:HB3	1:B:310:GLU:OE1	2.12	0.48
1:B:323:GLU:HG2	1:B:324:TRP:N	2.28	0.48
1:B:324:TRP:O	1:B:327:ALA:HB3	2.13	0.48
1:A:275:LEU:O	1:A:279:HIS:HD2	1.96	0.48
1:A:93:ASP:HB3	1:B:98:PRO:HB3	1.95	0.48
1:B:108:PRO:HB2	1:B:111:LEU:HB2	1.95	0.48
1:B:116:SER:N	1:B:236:ARG:HH22	2.11	0.48
1:B:246:TRP:CD1	1:B:481:PRO:HG3	2.48	0.48
1:A:360:MET:HA	1:A:420:VAL:O	2.13	0.48

Continued on next page...

Continued from previous page...

Atom-1	Atom-2	Interatomic distance (Å)	Clash overlap (Å)
1:B:365:GLY:HA2	1:B:369:LEU:HD12	1.95	0.48
1:B:249:GLN:HB2	1:B:252:ARG:CD	2.43	0.47
1:A:226:LEU:HD12	1:A:226:LEU:N	2.29	0.47
1:A:373:HIS:ND1	1:B:77:GLU:HA	2.28	0.47
1:A:77:GLU:HG3	1:B:372:PRO:HG2	1.96	0.47
1:A:102:LEU:HB3	1:A:105:LEU:HD22	1.96	0.47
5:B:500:HEM:HBC2	5:B:500:HEM:HMC1	1.95	0.47
1:B:74:LYS:CG	1:B:75:ASN:N	2.77	0.47
1:A:213:ILE:O	1:A:217:ILE:HG13	2.15	0.47
1:B:155:VAL:O	1:B:159:VAL:HG23	2.15	0.47
1:A:360:MET:HE1	1:A:362:THR:OG1	2.15	0.47
1:B:116:SER:N	1:B:117:PRO:CD	2.78	0.46
1:B:273:THR:OG1	1:B:291:LEU:HD21	2.15	0.46
1:A:216:HIS:CD2	1:A:216:HIS:C	2.88	0.46
1:A:234:PRO:HB2	1:A:243:PHE:CD1	2.51	0.46
1:A:449:TRP:HA	7:A:1600:H4B:N1	2.31	0.46
1:A:155:VAL:O	1:A:159:VAL:HG23	2.16	0.46
1:B:167:LEU:HG	1:B:348:LEU:HD12	1.98	0.46
1:B:366:THR:O	1:B:370:CYS:HB2	2.16	0.46
1:A:249:GLN:HB2	1:A:252:ARG:CG	2.44	0.46
1:A:319:HIS:CG	1:A:320:PRO:HD2	2.50	0.46
1:B:319:HIS:CG	1:B:320:PRO:HD2	2.51	0.46
1:A:214:CYS:O	1:A:218:LYS:HG3	2.16	0.45
1:B:412:PHE:CG	1:B:419:ILE:HD12	2.51	0.45
1:B:146:GLN:HE21	1:B:150:GLU:CG	2.29	0.45
1:A:184:PRO:HB3	1:A:468:ASN:ND2	2.31	0.45
1:B:168:ARG:HB2	1:B:171:GLU:HG3	1.98	0.45
1:B:308:PRO:HB2	1:B:311:LEU:HD13	1.98	0.45
1:A:285:ASN:HD22	1:A:286:GLY:N	2.15	0.45
1:A:274:GLU:O	1:A:278:GLN:HG3	2.16	0.45
1:A:421:ASP:OD2	1:A:423:HIS:HB2	2.17	0.45
1:A:185:ARG:HD3	1:A:449:TRP:CD2	2.52	0.44
1:A:121:PRO:O	1:A:122:ALA:C	2.55	0.44
1:B:281:TRP:HB2	1:B:304:LEU:HD21	2.00	0.44
1:A:236:ARG:NE	1:A:242:ASP:OD1	2.49	0.44
1:A:99:ARG:CB	1:A:99:ARG:HH11	2.13	0.44
1:A:409:LEU:HD21	1:A:421:ASP:HB3	1.99	0.44
1:A:390:ARG:HB2	1:A:390:ARG:HE	1.59	0.44
1:B:224:GLY:O	1:B:417:VAL:HA	2.17	0.44
1:B:457:SER:HA	1:B:462:PHE:CB	2.47	0.44
1:B:200:ALA:O	1:B:203:CYS:HB2	2.16	0.44

Continued on next page...

Continued from previous page...

Atom-1	Atom-2	Interatomic distance (Å)	Clash overlap (Å)
1:B:459:THR:HB	1:B:460:PRO:HD2	1.99	0.44
1:A:167:LEU:HG	1:A:348:LEU:HD12	1.99	0.44
6:A:1910:NO:O	8:A:1700:ARG:HD3	2.18	0.44
1:B:388:ASP:C	1:B:390:ARG:H	2.21	0.43
1:B:371:ASP:HB2	1:B:374:ARG:CG	2.48	0.43
1:A:95:PRO:HB3	1:A:108:PRO:HB2	1.99	0.43
1:A:340:ASN:N	1:A:340:ASN:HD22	2.13	0.43
1:A:341:MET:SD	5:A:500:HEM:HBD2	2.58	0.43
1:A:371:ASP:HB2	1:A:374:ARG:HG2	2.01	0.43
1:A:97:THR:HG23	1:A:100:ARG:NH1	2.34	0.43
1:B:180:TRP:CE3	1:B:192:TRP:HA	2.54	0.43
1:B:185:ARG:HD3	1:B:449:TRP:CD2	2.53	0.43
1:B:323:GLU:HG2	1:B:324:TRP:H	1.83	0.43
1:B:109:ARG:HG2	1:B:109:ARG:NH1	2.33	0.43
1:B:310:GLU:N	1:B:310:GLU:OE2	2.47	0.43
1:A:370:CYS:SG	1:A:378:LEU:HD13	2.59	0.43
1:A:231:THR:O	1:A:353:ALA:HA	2.19	0.43
1:A:183:ALA:HA	1:A:184:PRO:HD3	1.88	0.43
1:A:226:LEU:CD1	1:A:226:LEU:H	2.32	0.43
1:B:191:GLN:HB3	10:B:2954:HOH:O	2.18	0.43
1:B:242:ASP:HB3	1:B:351:SER:OG	2.18	0.43
1:B:337:ALA:CB	1:B:356:SER:HB3	2.49	0.42
1:A:226:LEU:H	1:A:226:LEU:HD12	1.84	0.42
1:A:206:ALA:HB2	10:A:2063:HOH:O	2.19	0.42
1:A:361:SER:OG	1:A:421:ASP:HA	2.19	0.42
1:A:202:ASP:OD1	1:A:203:CYS:N	2.53	0.42
1:B:467:VAL:HG12	1:B:469:TYR:HD2	1.84	0.42
1:B:113:THR:HG21	1:B:342:LEU:HD13	2.02	0.42
1:B:375:TYR:O	1:B:376:ASN:C	2.57	0.42
1:A:126:LEU:HD23	1:A:159:VAL:HG11	2.01	0.42
1:B:360:MET:HA	1:B:420:VAL:O	2.20	0.42
1:A:257:ARG:HA	1:A:257:ARG:HD2	1.82	0.42
1:A:378:LEU:HA	1:A:378:LEU:HD12	1.93	0.42
1:B:322:LEU:HD13	1:B:324:TRP:CZ2	2.55	0.42
1:B:288:PHE:HB2	1:B:331:ARG:HD3	2.01	0.42
1:A:467:VAL:HG12	1:A:469:TYR:HD2	1.85	0.42
1:B:249:GLN:HB2	1:B:252:ARG:CG	2.50	0.42
1:A:183:ALA:O	1:A:189:ARG:CZ	2.68	0.42
1:B:191:GLN:HG3	3:B:2860:ACT:H2	2.01	0.41
1:A:187:VAL:O	1:A:187:VAL:HG22	2.20	0.41
1:B:109:ARG:HH11	1:B:109:ARG:HG2	1.85	0.41

Continued on next page...

Continued from previous page...

Atom-1	Atom-2	Interatomic distance (Å)	Clash overlap (Å)
1:A:256:TYR:HB2	1:A:264:ARG:HB3	2.02	0.41
1:A:340:ASN:ND2	1:A:340:ASN:H	2.18	0.41
1:A:129:ALA:O	1:A:133:ILE:HG12	2.21	0.41
1:B:260:ASP:C	1:B:262:SER:H	2.24	0.41
1:A:371:ASP:HB2	1:A:374:ARG:CG	2.51	0.41
5:B:500:HEM:CMC	5:B:500:HEM:HBC2	2.50	0.41
5:A:500:HEM:HAD1	10:A:2070:HOH:O	2.20	0.41
1:A:247:ASN:OD1	1:A:247:ASN:N	2.54	0.41
1:A:314:GLU:CD	1:A:331:ARG:HH21	2.25	0.41
1:B:117:PRO:O	1:B:239:GLY:N	2.54	0.41
1:B:130:ARG:O	1:B:134:ASN:ND2	2.54	0.41
1:B:398:ASP:O	1:B:402:VAL:HG23	2.20	0.40
1:A:277:ILE:HD11	1:A:283:PRO:HB3	2.02	0.40
1:B:315:VAL:HA	1:B:316:PRO:HD3	1.87	0.40
1:B:467:VAL:HG12	1:B:469:TYR:CD2	2.56	0.40
1:B:359:TYR:CD2	1:B:364:ILE:HD11	2.55	0.40
1:B:370:CYS:SG	1:B:378:LEU:HD13	2.62	0.40

There are no symmetry-related clashes.

5.3 Torsion angles [i](#)

5.3.1 Protein backbone [i](#)

In the following table, the Percentiles column shows the percent Ramachandran outliers of the chain as a percentile score with respect to all X-ray entries followed by that with respect to entries of similar resolution.

The Analysed column shows the number of residues for which the backbone conformation was analysed, and the total number of residues.

Mol	Chain	Analysed	Favoured	Allowed	Outliers	Percentiles	
1	A	414/444 (93%)	380 (92%)	30 (7%)	4 (1%)	19	21
1	B	412/444 (93%)	373 (90%)	33 (8%)	6 (2%)	13	12
All	All	826/888 (93%)	753 (91%)	63 (8%)	10 (1%)	16	16

All (10) Ramachandran outliers are listed below:

Mol	Chain	Res	Type
1	A	112	GLN

Continued on next page...

Continued from previous page...

Mol	Chain	Res	Type
1	B	111	LEU
1	B	259	GLN
1	B	260	ASP
1	B	145	SER
1	B	262	SER
1	A	121	PRO
1	A	115	PRO
1	B	115	PRO
1	A	456	GLY

5.3.2 Protein sidechains ⓘ

In the following table, the Percentiles column shows the percent sidechain outliers of the chain as a percentile score with respect to all X-ray entries followed by that with respect to entries of similar resolution.

The Analysed column shows the number of residues for which the sidechain conformation was analysed, and the total number of residues.

Mol	Chain	Analysed	Rotameric	Outliers	Percentiles	
1	A	354/377 (94%)	343 (97%)	11 (3%)	47	64
1	B	353/377 (94%)	346 (98%)	7 (2%)	63	79
All	All	707/754 (94%)	689 (98%)	18 (2%)	55	73

All (18) residues with a non-rotameric sidechain are listed below:

Mol	Chain	Res	Type
1	A	99	ARG
1	A	100	ARG
1	A	112	GLN
1	A	126	LEU
1	A	240	ARG
1	A	285	ASN
1	A	328	LEU
1	A	340	ASN
1	A	342	LEU
1	A	376	ASN
1	A	468	ASN
1	B	99	ARG
1	B	100	ARG
1	B	114	ARG

Continued on next page...

Continued from previous page...

Mol	Chain	Res	Type
1	B	225	ASN
1	B	257	ARG
1	B	340	ASN
1	B	413	GLN

Some sidechains can be flipped to improve hydrogen bonding and reduce clashes. All (22) such sidechains are listed below:

Mol	Chain	Res	Type
1	A	92	GLN
1	A	191	GLN
1	A	278	GLN
1	A	279	HIS
1	A	285	ASN
1	A	296	GLN
1	A	340	ASN
1	A	376	ASN
1	A	413	GLN
1	A	468	ASN
1	B	89	GLN
1	B	92	GLN
1	B	134	ASN
1	B	146	GLN
1	B	191	GLN
1	B	215	ASN
1	B	222	ASN
1	B	225	ASN
1	B	278	GLN
1	B	279	HIS
1	B	340	ASN
1	B	405	ASN

5.3.3 RNA ⓘ

There are no RNA molecules in this entry.

5.4 Non-standard residues in protein, DNA, RNA chains ⓘ

There are no non-standard protein/DNA/RNA residues in this entry.

5.5 Carbohydrates

There are no carbohydrates in this entry.

5.6 Ligand geometry

Of 15 ligands modelled in this entry, 1 is monoatomic - leaving 14 for Mogul analysis.

In the following table, the Counts columns list the number of bonds (or angles) for which Mogul statistics could be retrieved, the number of bonds (or angles) that are observed in the model and the number of bonds (or angles) that are defined in the chemical component dictionary. The Link column lists molecule types, if any, to which the group is linked. The Z score for a bond length (or angle) is the number of standard deviations the observed value is removed from the expected value. A bond length (or angle) with $|Z| > 2$ is considered an outlier worth inspection. RMSZ is the root-mean-square of all Z scores of the bond lengths (or angles).

Mol	Type	Chain	Res	Link	Bond lengths			Bond angles		
					Counts	RMSZ	# $ Z > 2$	Counts	RMSZ	# $ Z > 2$
7	H4B	A	1600	-	13,18,18	2.25	4 (30%)	11,26,26	4.09	6 (54%)
8	ARG	A	1700	-	5,11,11	0.24	0	3,13,13	0.46	0
3	ACT	A	1860	-	1,3,3	2.91	1 (100%)	0,3,3	0.00	-
9	GOL	A	1880	-	5,5,5	0.13	0	5,5,5	0.23	0
6	NO	A	1910	5	0,1,1	0.00	-	0,0,0	0.00	-
2	CAC	A	1950	1	0,2,4	0.00	-	0,1,6	0.00	-
5	HEM	A	500	1,6	30,50,50	2.69	12 (40%)	24,82,82	2.45	10 (41%)
7	H4B	B	2600	-	13,18,18	2.24	3 (23%)	11,26,26	4.20	6 (54%)
8	ARG	B	2700	-	5,11,11	0.25	0	3,13,13	0.61	0
3	ACT	B	2860	-	1,3,3	3.17	1 (100%)	0,3,3	0.00	-
9	GOL	B	2880	-	5,5,5	0.16	0	5,5,5	0.16	0
6	NO	B	2910	5	0,1,1	0.00	-	0,0,0	0.00	-
2	CAC	B	2950	1	0,2,4	0.00	-	0,1,6	0.00	-
5	HEM	B	500	1,6	30,50,50	2.37	8 (26%)	24,82,82	2.34	8 (33%)

In the following table, the Chirals column lists the number of chiral outliers, the number of chiral centers analysed, the number of these observed in the model and the number defined in the chemical component dictionary. Similar counts are reported in the Torsion and Rings columns. '-' means no outliers of that kind were identified.

Mol	Type	Chain	Res	Link	Chirals	Torsions	Rings
7	H4B	A	1600	-	-	0/8/17/17	0/2/2/2
8	ARG	A	1700	-	-	0/5/11/11	0/0/0/0
3	ACT	A	1860	-	-	0/0/0/0	0/0/0/0
9	GOL	A	1880	-	-	0/4/4/4	0/0/0/0

Continued on next page...

Continued from previous page...

Mol	Type	Chain	Res	Link	Chirals	Torsions	Rings
6	NO	A	1910	5	-	0/0/0/0	0/0/0/0
2	CAC	A	1950	1	-	0/0/0/0	0/0/0/0
5	HEM	A	500	1,6	-	0/10/54/54	0/0/8/8
7	H4B	B	2600	-	-	0/8/17/17	0/2/2/2
8	ARG	B	2700	-	-	0/5/11/11	0/0/0/0
3	ACT	B	2860	-	-	0/0/0/0	0/0/0/0
9	GOL	B	2880	-	-	0/4/4/4	0/0/0/0
6	NO	B	2910	5	-	0/0/0/0	0/0/0/0
2	CAC	B	2950	1	-	0/0/0/0	0/0/0/0
5	HEM	B	500	1,6	-	0/10/54/54	0/0/8/8

All (29) bond length outliers are listed below:

Mol	Chain	Res	Type	Atoms	Z	Observed(Å)	Ideal(Å)
5	A	500	HEM	C2D-C3D	-6.56	1.34	1.54
5	A	500	HEM	C3D-C4D	-6.41	1.43	1.51
5	B	500	HEM	C3B-CAB	-5.63	1.40	1.51
5	A	500	HEM	C3B-CAB	-5.39	1.41	1.51
5	A	500	HEM	C3C-CAC	-5.21	1.41	1.51
5	B	500	HEM	C3D-C4D	-5.11	1.45	1.51
5	B	500	HEM	C2D-C3D	-4.72	1.40	1.54
5	B	500	HEM	C3B-C4B	-4.70	1.47	1.51
5	B	500	HEM	C2C-C1C	-4.29	1.44	1.52
5	B	500	HEM	C3C-CAC	-4.26	1.43	1.51
5	A	500	HEM	C2C-C1C	-3.76	1.45	1.52
5	A	500	HEM	C3B-C4B	-3.66	1.48	1.51
5	A	500	HEM	C2D-C1D	-2.18	1.44	1.51
5	A	500	HEM	C2B-C1B	-2.17	1.44	1.51
5	A	500	HEM	CHC-C1C	2.18	1.41	1.36
7	A	1600	H4B	C8A-N1	2.35	1.38	1.34
5	B	500	HEM	C1C-NC	2.39	1.39	1.36
5	B	500	HEM	CHC-C1C	2.55	1.42	1.36
5	A	500	HEM	CHD-C4C	2.68	1.42	1.36
5	A	500	HEM	C1C-NC	2.89	1.39	1.36
3	A	1860	ACT	CH3-C	2.91	1.52	1.48
5	A	500	HEM	C4C-NC	2.94	1.39	1.36
3	B	2860	ACT	CH3-C	3.17	1.53	1.48
7	B	2600	H4B	C6-N5	3.50	1.52	1.45
7	B	2600	H4B	C4A-N5	3.58	1.46	1.38
7	A	1600	H4B	C4A-N5	3.64	1.46	1.38
7	A	1600	H4B	C6-N5	4.25	1.54	1.45
7	A	1600	H4B	C4-N3	4.77	1.42	1.33

Continued on next page...

Continued from previous page...

Mol	Chain	Res	Type	Atoms	Z	Observed(Å)	Ideal(Å)
7	B	2600	H4B	C4-N3	5.40	1.43	1.33

All (30) bond angle outliers are listed below:

Mol	Chain	Res	Type	Atoms	Z	Observed(°)	Ideal(°)
7	B	2600	H4B	N3-C2-N1	-5.16	117.07	125.53
5	B	500	HEM	CBA-CAA-C2A	-5.16	103.28	112.53
7	A	1600	H4B	N3-C2-N1	-4.82	117.63	125.53
5	A	500	HEM	CAA-C2A-C1A	-2.67	124.11	127.01
5	B	500	HEM	C2D-C3D-C4D	2.04	104.95	101.50
5	A	500	HEM	CMD-C2D-C3D	2.06	123.45	114.35
5	A	500	HEM	C3B-C4B-CHC	2.50	126.69	123.16
5	B	500	HEM	CMD-C2D-C3D	2.61	125.91	114.35
5	A	500	HEM	C3C-CAC-CBC	2.81	128.77	124.46
5	B	500	HEM	C3C-CAC-CBC	3.12	129.25	124.46
7	B	2600	H4B	N2-C2-N1	3.24	122.57	117.20
5	A	500	HEM	CAD-C3D-C4D	3.34	124.26	112.47
5	B	500	HEM	CMC-C2C-C3C	3.47	125.20	116.53
7	A	1600	H4B	N2-C2-N1	3.51	123.01	117.20
5	B	500	HEM	CMB-C2B-C3B	3.52	125.33	116.53
5	B	500	HEM	CAD-C3D-C4D	3.55	125.00	112.47
7	A	1600	H4B	C2-N1-C8A	3.59	122.60	114.54
7	B	2600	H4B	C2-N1-C8A	3.63	122.69	114.54
7	B	2600	H4B	C4A-C8A-N8	3.69	122.77	118.43
7	A	1600	H4B	C4A-C8A-N8	3.82	122.93	118.43
5	A	500	HEM	C2D-C3D-C4D	3.85	108.03	101.50
5	A	500	HEM	CMB-C2B-C3B	4.19	126.99	116.53
5	A	500	HEM	C3B-CAB-CBB	4.43	131.26	124.46
5	A	500	HEM	CMC-C2C-C3C	4.47	127.70	116.53
5	A	500	HEM	CAD-C3D-C2D	4.94	127.42	113.22
5	B	500	HEM	CAD-C3D-C2D	5.50	129.04	113.22
7	B	2600	H4B	C4-N3-C2	6.27	124.65	115.94
7	A	1600	H4B	C4-N3-C2	6.52	124.99	115.94
7	A	1600	H4B	C4-C4A-C8A	8.66	122.40	114.56
7	B	2600	H4B	C4-C4A-C8A	9.22	122.90	114.56

There are no chirality outliers.

There are no torsion outliers.

There are no ring outliers.

9 monomers are involved in 12 short contacts:

Mol	Chain	Res	Type	Clashes	Symm-Clashes
7	A	1600	H4B	1	0
8	A	1700	ARG	2	0
3	A	1860	ACT	2	0
6	A	1910	NO	1	0
5	A	500	HEM	2	0
7	B	2600	H4B	1	0
8	B	2700	ARG	1	0
3	B	2860	ACT	1	0
5	B	500	HEM	2	0

5.7 Other polymers [i](#)

There are no such residues in this entry.

5.8 Polymer linkage issues [i](#)

There are no chain breaks in this entry.

6 Fit of model and data

6.1 Protein, DNA and RNA chains

In the following table, the column labelled ‘#RSRZ> 2’ contains the number (and percentage) of RSRZ outliers, followed by percent RSRZ outliers for the chain as percentile scores relative to all X-ray entries and entries of similar resolution. The OWAB column contains the minimum, median, 95th percentile and maximum values of the occupancy-weighted average B-factor per residue. The column labelled ‘Q< 0.9’ lists the number of (and percentage) of residues with an average occupancy less than 0.9.

Mol	Chain	Analysed	<RSRZ>	#RSRZ>2	OWAB(Å ²)	Q<0.9
1	A	416/444 (93%)	0.53	39 (9%) 11 16	26, 47, 73, 101	0
1	B	414/444 (93%)	0.57	34 (8%) 14 20	28, 51, 75, 101	0
All	All	830/888 (93%)	0.55	73 (8%) 12 18	26, 49, 74, 101	0

All (73) RSRZ outliers are listed below:

Mol	Chain	Res	Type	RSRZ
1	B	117	PRO	11.8
1	A	118	GLY	11.0
1	B	119	PRO	9.9
1	A	119	PRO	9.8
1	B	118	GLY	9.0
1	A	117	PRO	8.9
1	B	113	THR	8.7
1	A	113	THR	8.1
1	B	115	PRO	7.5
1	A	111	LEU	7.3
1	B	111	LEU	7.0
1	A	115	PRO	6.9
1	B	116	SER	6.8
1	B	110	LYS	6.6
1	A	116	SER	6.6
1	B	120	PRO	6.1
1	A	120	PRO	5.2
1	B	114	ARG	5.1
1	A	121	PRO	5.1
1	B	121	PRO	4.8
1	A	239	GLY	4.4
1	A	123	GLU	4.1
1	A	114	ARG	4.1
1	B	112	GLN	4.0

Continued on next page...

Continued from previous page...

Mol	Chain	Res	Type	RSRZ
1	A	122	ALA	3.9
1	A	110	LYS	3.9
1	B	277	ILE	3.8
1	A	159	VAL	3.7
1	A	259	GLN	3.6
1	A	157	ALA	3.6
1	B	259	GLN	3.4
1	A	238	PRO	3.1
1	B	146	GLN	3.1
1	B	142	ARG	3.0
1	A	124	GLN	3.0
1	A	160	ALA	3.0
1	B	261	GLY	3.0
1	B	70	PHE	2.9
1	B	223	ARG	2.7
1	A	301	ALA	2.7
1	B	260	ASP	2.6
1	A	99	ARG	2.6
1	B	390	ARG	2.6
1	A	109	ARG	2.6
1	A	338	VAL	2.6
1	B	258	GLN	2.6
1	A	130	ARG	2.6
1	B	122	ALA	2.6
1	A	126	LEU	2.5
1	A	108	PRO	2.5
1	A	112	GLN	2.5
1	A	163	GLY	2.5
1	A	91	GLN	2.4
1	B	304	LEU	2.4
1	A	304	LEU	2.4
1	B	354	PRO	2.4
1	B	337	ALA	2.3
1	B	232	VAL	2.2
1	B	141	LYS	2.2
1	B	282	THR	2.2
1	A	337	ALA	2.2
1	A	240	ARG	2.2
1	A	67	GLY	2.1
1	A	311	LEU	2.1
1	A	414	LEU	2.1
1	B	353	ALA	2.1

Continued on next page...

Continued from previous page...

Mol	Chain	Res	Type	RSRZ
1	B	452	PRO	2.1
1	B	448	ALA	2.0
1	A	146	GLN	2.0
1	B	270	VAL	2.0
1	B	451	VAL	2.0
1	A	283	PRO	2.0
1	A	92	GLN	2.0

6.2 Non-standard residues in protein, DNA, RNA chains [i](#)

There are no non-standard protein/DNA/RNA residues in this entry.

6.3 Carbohydrates [i](#)

There are no carbohydrates in this entry.

6.4 Ligands [i](#)

In the following table, the Atoms column lists the number of modelled atoms in the group and the number defined in the chemical component dictionary. LLDF column lists the quality of electron density of the group with respect to its neighbouring residues in protein, DNA or RNA chains. The B-factors column lists the minimum, median, 95th percentile and maximum values of B factors of atoms in the group. The column labelled 'Q < 0.9' lists the number of atoms with occupancy less than 0.9.

Mol	Type	Chain	Res	Atoms	RSCC	RSR	LLDF	B-factors(Å ²)	Q<0.9
3	ACT	A	1860	4/4	0.94	0.24	4.85	71,72,72,72	0
9	GOL	B	2880	6/6	0.87	0.29	2.84	55,57,59,62	0
9	GOL	A	1880	6/6	0.92	0.26	2.59	55,55,56,58	0
8	ARG	A	1700	12/12	0.90	0.29	2.51	38,39,42,42	0
8	ARG	B	2700	12/12	0.96	0.25	2.09	31,34,37,37	0
3	ACT	B	2860	4/4	0.93	0.14	1.95	62,62,63,63	0
7	H4B	A	1600	17/17	0.95	0.24	1.87	43,45,47,49	0
7	H4B	B	2600	17/17	0.95	0.21	0.63	33,35,36,39	0
5	HEM	A	500	43/43	0.97	0.19	0.62	28,33,40,43	0
5	HEM	B	500	43/43	0.97	0.16	-0.01	25,33,35,39	0
2	CAC	B	2950	3/5	0.98	0.17	-0.22	81,81,82,84	0
2	CAC	A	1950	3/5	0.97	0.10	-0.49	65,65,65,70	0
4	ZN	B	900	1/1	1.00	0.07	-3.19	43,43,43,43	0
6	NO	A	1910	2/2	0.98	0.14	-	34,34,34,38	0

Continued on next page...

Continued from previous page...

Mol	Type	Chain	Res	Atoms	RSCC	RSR	LLDF	B-factors(\AA^2)	Q<0.9
6	NO	B	2910	2/2	0.97	0.19	-	34,34,34,36	0

6.5 Other polymers [i](#)

There are no such residues in this entry.