



Full wwPDB X-ray Structure Validation Report ⓘ

Dec 8, 2016 – 02:45 PM EST

PDB ID : 1FQ5
Title : X-ray structure of a cyclic statine inhibitor PD-129,541 bound to yeast proteinase A
Authors : Cronin, N.B.; Badasso, M.O.; Tickle, I.J.; Dreyer, T.; Hoover, D.J.; Rosati, R.L.; Humblet, C.C.; Lunney, E.A.; Cooper, J.B.
Deposited on : 2000-09-03
Resolution : 2.40 Å(reported)

This is a Full wwPDB X-ray Structure Validation Report for a publicly released PDB entry.

We welcome your comments at validation@mail.wwpdb.org

A user guide is available at

<http://wwpdb.org/validation/2016/XrayValidationReportHelp>

with specific help available everywhere you see the ⓘ symbol.

The following versions of software and data (see [references ⓘ](#)) were used in the production of this report:

MolProbity	:	4.02b-467
Mogul	:	1.7.1 (RC1), CSD as537be (2016)
Xtriage (Phenix)	:	1.9-1692
EDS	:	rb-20028442
Percentile statistics	:	20151230.v01 (using entries in the PDB archive December 30th 2015)
Refmac	:	5.8.0135
CCP4	:	6.5.0
Ideal geometry (proteins)	:	Engh & Huber (2001)
Ideal geometry (DNA, RNA)	:	Parkinson et al. (1996)
Validation Pipeline (wwPDB-VP)	:	rb-20028442

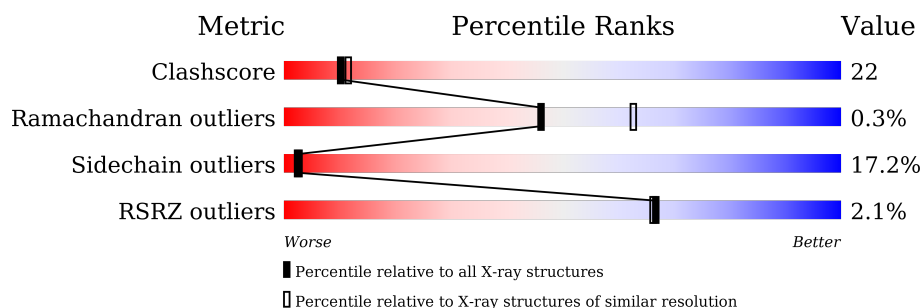
1 Overall quality at a glance

The following experimental techniques were used to determine the structure:

X-RAY DIFFRACTION

The reported resolution of this entry is 2.40 Å.

Percentile scores (ranging between 0-100) for global validation metrics of the entry are shown in the following graphic. The table shows the number of entries on which the scores are based.



Metric	Whole archive (#Entries)	Similar resolution (#Entries, resolution range(Å))
Clashscore	102246	3407 (2.40-2.40)
Ramachandran outliers	100387	3351 (2.40-2.40)
Sidechain outliers	100360	3352 (2.40-2.40)
RSRZ outliers	91569	2928 (2.40-2.40)

The table below summarises the geometric issues observed across the polymeric chains and their fit to the electron density. The red, orange, yellow and green segments on the lower bar indicate the fraction of residues that contain outliers for ≥ 3 , 2, 1 and 0 types of geometric quality criteria. A grey segment represents the fraction of residues that are not modelled. The numeric value for each fraction is indicated below the corresponding segment, with a dot representing fractions $\leq 5\%$. The upper red bar (where present) indicates the fraction of residues that have poor fit to the electron density. The numeric value is given above the bar.

Mol	Chain	Length	Quality of chain
1	A	329	

The following table lists non-polymeric compounds, carbohydrate monomers and non-standard residues in protein, DNA, RNA chains that are outliers for geometric or electron-density-fit criteria:

Mol	Type	Chain	Res	Chirality	Geometry	Clashes	Electron density
2	MAN	A	334	X	-	-	-
2	MAN	A	335	X	-	X	-
3	NDG	A	337	-	-	-	X

2 Entry composition [i](#)

There are 5 unique types of molecules in this entry. The entry contains 2770 atoms, of which 0 are hydrogens and 0 are deuteriums.

In the tables below, the ZeroOcc column contains the number of atoms modelled with zero occupancy, the AltConf column contains the number of residues with at least one atom in alternate conformation and the Trace column contains the number of residues modelled with at most 2 atoms.

- Molecule 1 is a protein called SACCHAROPEPSIN.

Mol	Chain	Residues	Atoms					ZeroOcc	AltConf	Trace
1	A	329	Total	C	N	O	S	0	0	0
			2528	1618	396	508	6			

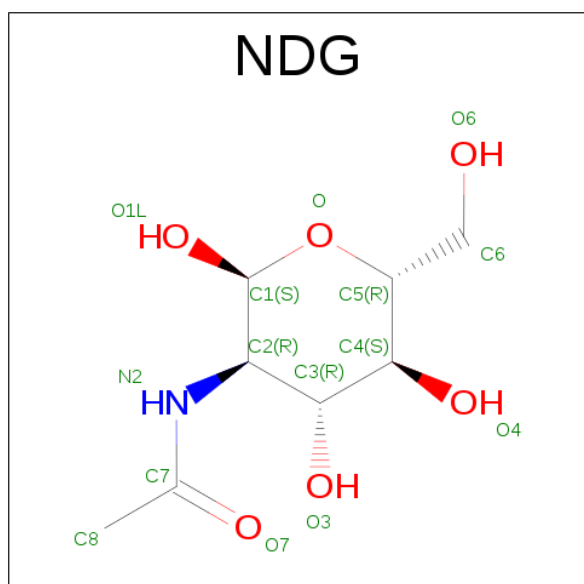
There is a discrepancy between the modelled and reference sequences:

Chain	Residue	Modelled	Actual	Comment	Reference
A	315	ILE	LEU	CONFLICT	UNP P07267

- Molecule 2 is a polymer of unknown type called SUGAR (5-MER).

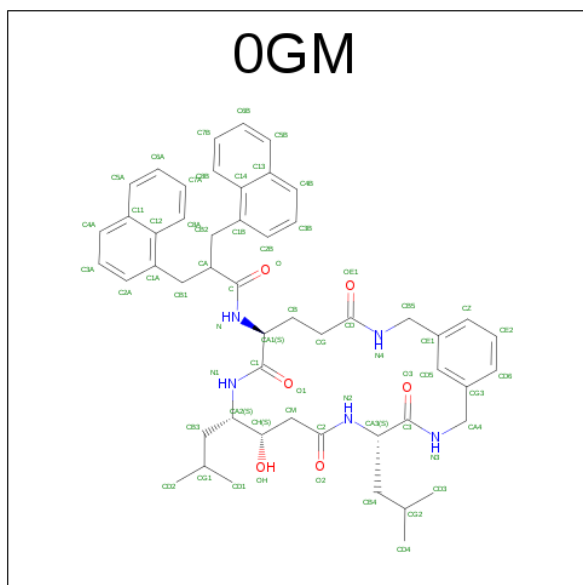
Mol	Chain	Residues	Atoms				ZeroOcc	AltConf
2	A	5	Total	C	N	O	0	0
			61	34	2	25		

- Molecule 3 is SUGAR (2-(ACETYLAMINO)-2-DEOXY-A-D-GLUCOPYRANOSE) (three-letter code: NDG) (formula: C₈H₁₅NO₆).



Mol	Chain	Residues	Atoms				ZeroOcc	AltConf
3	A	1	Total	C	N	O	0	0
			14	8	1	5		

- Molecule 4 is N-[(5S,9S,10S,13S)-9-HYDROXY-5,10-BIS(2-METHYLPROPYL)-4,7,12,16-TETRAOXO-3,6,11,17-TETRAAZABICYCLO[17.3.1]TRICOSA-1(23),19,21-TRIEN-13-YL]-3-(NAPHTHALEN-1-YL)-2-(NAPHTHALEN-1-YLMETHYL)PROPANAMIDE (three-letter code: OGM) (formula: C₅₁H₆₁N₅O₆).



Mol	Chain	Residues	Atoms				ZeroOcc	AltConf
4	A	1	Total	C	N	O	0	0
			62	51	5	6		

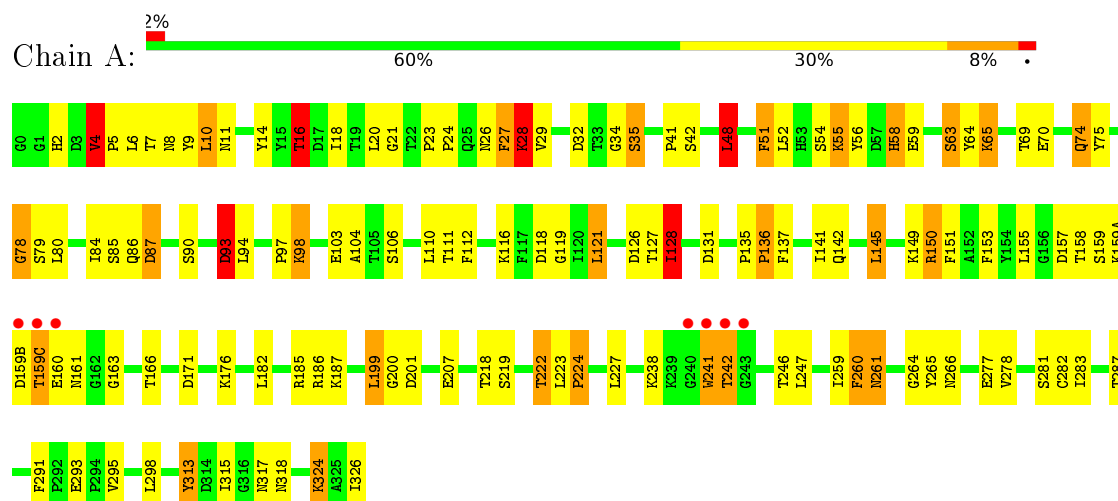
- Molecule 5 is water.

Mol	Chain	Residues	Atoms		ZeroOcc	AltConf
5	A	105	Total	O	0	0
			105	105		

3 Residue-property plots

These plots are drawn for all protein, RNA and DNA chains in the entry. The first graphic for a chain summarises the proportions of errors displayed in the second graphic. The second graphic shows the sequence view annotated by issues in geometry and electron density. Residues are color-coded according to the number of geometric quality criteria for which they contain at least one outlier: green = 0, yellow = 1, orange = 2 and red = 3 or more. A red dot above a residue indicates a poor fit to the electron density ($RSRZ > 2$). Stretches of 2 or more consecutive residues without any outlier are shown as a green connector. Residues present in the sample, but not in the model, are shown in grey.

• Molecule 1: SACCHAROPEPSIN



4 Data and refinement statistics

Property	Value	Source
Space group	P 32 2 1	Depositor
Cell constants a, b, c, α , β , γ	87.30 Å 87.30 Å 110.70 Å 90.00° 90.00° 120.00°	Depositor
Resolution (Å)	12.90 – 2.40 12.81 – 2.41	Depositor EDS
% Data completeness (in resolution range)	100.0 (12.90-2.40) 89.9 (12.81-2.41)	Depositor EDS
R_{merge}	0.07	Depositor
R_{sym}	(Not available)	Depositor
$\langle I/\sigma(I) \rangle$ ¹	2.50 (at 2.41 Å)	Xtriage
Refinement program	RESTRAIN	Depositor
R, R_{free}	0.200 , 0.280 0.181 , (Not available)	Depositor DCC
R_{free} test set	No test flags present.	DCC
Wilson B-factor (Å ²)	40.2	Xtriage
Anisotropy	0.355	Xtriage
Bulk solvent k_{sol} (e/Å ³), B_{sol} (Å ²)	0.33 , 104.2	EDS
L-test for twinning ²	$\langle L \rangle = 0.50$, $\langle L^2 \rangle = 0.33$	Xtriage
Estimated twinning fraction	0.026 for -h,-k,l	Xtriage
F_o, F_c correlation	0.95	EDS
Total number of atoms	2770	wwPDB-VP
Average B, all atoms (Å ²)	40.0	wwPDB-VP

Xtriage's analysis on translational NCS is as follows: *The largest off-origin peak in the Patterson function is 5.27% of the height of the origin peak. No significant pseudotranslation is detected.*

¹Intensities estimated from amplitudes.

²Theoretical values of $\langle |L| \rangle$, $\langle L^2 \rangle$ for acentric reflections are 0.5, 0.333 respectively for untwinned datasets, and 0.375, 0.2 for perfectly twinned datasets.

5 Model quality ⓘ

5.1 Standard geometry ⓘ

Bond lengths and bond angles in the following residue types are not validated in this section: 0GM, BMA, NAG, NDG, MAN

The Z score for a bond length (or angle) is the number of standard deviations the observed value is removed from the expected value. A bond length (or angle) with $|Z| > 5$ is considered an outlier worth inspection. RMSZ is the root-mean-square of all Z scores of the bond lengths (or angles).

Mol	Chain	Bond lengths		Bond angles	
		RMSZ	# Z >5	RMSZ	# Z >5
1	A	0.70	0/2592	1.56	40/3526 (1.1%)

Chiral center outliers are detected by calculating the chiral volume of a chiral center and verifying if the center is modelled as a planar moiety or with the opposite hand. A planarity outlier is detected by checking planarity of atoms in a peptide group, atoms in a mainchain group or atoms of a sidechain that are expected to be planar.

Mol	Chain	#Chirality outliers	#Planarity outliers
1	A	4	0
2	A	4	0
All	All	8	0

There are no bond length outliers.

All (40) bond angle outliers are listed below:

Mol	Chain	Res	Type	Atoms	Z	Observed(°)	Ideal(°)
1	A	241	TRP	CA-CB-CG	18.73	149.29	113.70
1	A	93	ASP	CB-CG-OD1	-11.52	107.94	118.30
1	A	4	VAL	CA-CB-CG2	9.95	125.82	110.90
1	A	153	PHE	CZ-CE2-CD2	8.72	130.56	120.10
1	A	186	ARG	CA-CB-CG	8.34	131.75	113.40
1	A	153	PHE	CG-CD2-CE2	-8.16	111.82	120.80
1	A	128	ILE	CB-CG1-CD1	-7.28	93.53	113.90
1	A	28	LYS	CD-CE-NZ	7.08	128.00	111.70
1	A	278	VAL	CA-CB-CG2	6.97	121.35	110.90
1	A	48	LEU	CB-CG-CD1	6.92	122.77	111.00
1	A	94	LEU	CB-CG-CD1	-6.80	99.43	111.00
1	A	116	LYS	CD-CE-NZ	6.74	127.20	111.70
1	A	182	LEU	CB-CG-CD2	6.63	122.27	111.00
1	A	78	GLY	C-N-CA	6.49	137.92	121.70

Continued on next page...

Continued from previous page...

Mol	Chain	Res	Type	Atoms	Z	Observed(°)	Ideal(°)
1	A	63	SER	N-CA-CB	6.45	120.17	110.50
1	A	155	LEU	CA-CB-CG	6.34	129.89	115.30
1	A	298	LEU	CA-CB-CG	6.30	129.79	115.30
1	A	103	GLU	CA-CB-CG	6.24	127.13	113.40
1	A	200	GLY	C-N-CA	6.23	137.27	121.70
1	A	199	LEU	CB-CG-CD1	-6.13	100.58	111.00
1	A	87	ASP	CB-CG-OD2	6.01	123.71	118.30
1	A	150	ARG	NE-CZ-NH2	-5.99	117.31	120.30
1	A	112	PHE	N-CA-CB	5.95	121.30	110.60
1	A	16	THR	CA-CB-CG2	5.86	120.61	112.40
1	A	145	LEU	CB-CG-CD2	-5.75	101.22	111.00
1	A	186	ARG	CG-CD-NE	5.75	123.88	111.80
1	A	227	LEU	CB-CG-CD2	-5.71	101.29	111.00
1	A	242	THR	CA-C-N	5.56	127.32	116.20
1	A	126	ASP	CB-CG-OD1	5.44	123.20	118.30
1	A	207	GLU	OE1-CD-OE2	5.38	129.76	123.30
1	A	34	GLY	C-N-CA	5.32	135.01	121.70
1	A	199	LEU	CA-CB-CG	5.24	127.36	115.30
1	A	295	VAL	CA-CB-CG1	-5.22	103.06	110.90
1	A	260	PHE	O-C-N	5.17	130.98	122.70
1	A	93	ASP	CB-CG-OD2	5.16	122.94	118.30
1	A	20	LEU	CB-CG-CD2	5.12	119.71	111.00
1	A	186	ARG	NE-CZ-NH1	-5.11	117.75	120.30
1	A	160	GLU	CB-CA-C	5.10	120.60	110.40
1	A	74	GLN	C-N-CA	5.07	134.38	121.70
1	A	171	ASP	CB-CG-OD1	5.06	122.85	118.30

All (8) chirality outliers are listed below:

Mol	Chain	Res	Type	Atom
1	A	16	THR	CB
1	A	63	SER	CA
1	A	112	PHE	CA
1	A	160	GLU	CA
2	A	334	MAN	C3,C1
2	A	335	MAN	C3,C1

There are no planarity outliers.

5.2 Too-close contacts ⓘ

In the following table, the Non-H and H(model) columns list the number of non-hydrogen atoms and hydrogen atoms in the chain respectively. The H(added) column lists the number of hydrogen atoms added and optimized by MolProbity. The Clashes column lists the number of clashes within the asymmetric unit, whereas Symm-Clashes lists symmetry related clashes.

Mol	Chain	Non-H	H(model)	H(added)	Clashes	Symm-Clashes
1	A	2528	0	2400	99	3
2	A	61	0	50	12	0
3	A	14	0	13	4	0
4	A	62	0	61	7	0
5	A	105	0	0	6	3
All	All	2770	0	2524	113	3

The all-atom clashscore is defined as the number of clashes found per 1000 atoms (including hydrogen atoms). The all-atom clashscore for this structure is 22.

All (113) close contacts within the same asymmetric unit are listed below, sorted by their clash magnitude.

Atom-1	Atom-2	Interatomic distance (Å)	Clash overlap (Å)
1:A:55:LYS:HB2	1:A:55:LYS:NZ	1.47	1.12
1:A:69:THR:HB	1:A:84:ILE:HD13	1.28	1.09
1:A:242:THR:HG22	1:A:242:THR:O	1.50	1.07
1:A:55:LYS:HB2	1:A:55:LYS:HZ3	1.02	1.05
1:A:242:THR:CG2	1:A:242:THR:O	2.16	0.91
1:A:86:GLN:HE21	1:A:98:LYS:HA	1.37	0.88
1:A:4:VAL:HG23	1:A:16:THR:HG21	1.59	0.84
1:A:259:ILE:HD13	3:A:337:NDG:H6C2	1.60	0.84
2:A:334:MAN:H3	2:A:334:MAN:O2	1.78	0.83
1:A:246:THR:HG22	1:A:283:ILE:HG22	1.59	0.82
1:A:69:THR:HB	1:A:84:ILE:CD1	2.09	0.81
1:A:5:PRO:O	1:A:16:THR:HG23	1.81	0.80
2:A:335:MAN:C2	2:A:336:BMA:C1	2.59	0.79
1:A:2:HIS:HD2	1:A:93:ASP:HB3	1.50	0.77
1:A:86:GLN:O	1:A:87:ASP:HB2	1.85	0.76
1:A:137:PHE:HE2	1:A:315:ILE:HG21	1.50	0.76
1:A:74:GLN:O	1:A:74:GLN:HG3	1.85	0.75
1:A:2:HIS:HD2	1:A:93:ASP:CB	2.00	0.75
1:A:261:ASN:C	1:A:261:ASN:HD22	1.93	0.72
1:A:2:HIS:CD2	1:A:93:ASP:HB3	2.25	0.71
1:A:51:PHE:C	1:A:51:PHE:CD1	2.64	0.71
1:A:324:LYS:HG2	5:A:549:HOH:O	1.90	0.70

Continued on next page...

Continued from previous page...

Atom-1	Atom-2	Interatomic distance (Å)	Clash overlap (Å)
2:A:335:MAN:O2	2:A:335:MAN:C2	2.40	0.70
1:A:41:PRO:HB2	1:A:55:LYS:HG3	1.74	0.70
1:A:41:PRO:HG2	1:A:54:SER:O	1.93	0.68
1:A:23:PRO:HB2	1:A:24:PRO:HD2	1.76	0.68
1:A:80:LEU:HD12	1:A:104:ALA:HB2	1.75	0.67
2:A:334:MAN:C1	2:A:334:MAN:O2	2.42	0.67
2:A:335:MAN:O2	2:A:335:MAN:C1	2.43	0.67
1:A:32:ASP:OD2	1:A:35:SER:HB2	1.94	0.67
2:A:336:BMA:H5	5:A:657:HOH:O	1.95	0.67
1:A:261:ASN:HD21	1:A:264:GLY:H	1.43	0.67
2:A:334:MAN:C2	2:A:334:MAN:O2	2.43	0.66
1:A:42:SER:O	1:A:55:LYS:HG2	1.94	0.66
1:A:86:GLN:NE2	1:A:98:LYS:HB3	2.11	0.66
1:A:259:ILE:HD13	3:A:337:NDG:C6	2.27	0.64
1:A:55:LYS:CB	1:A:55:LYS:NZ	2.40	0.64
1:A:137:PHE:HE2	1:A:315:ILE:CG2	2.10	0.64
1:A:86:GLN:HE21	1:A:98:LYS:CA	2.09	0.64
1:A:10:LEU:O	1:A:11:ASN:HB2	1.96	0.63
1:A:128:ILE:O	1:A:128:ILE:HG12	1.98	0.63
2:A:334:MAN:C3	2:A:334:MAN:O2	2.48	0.62
1:A:259:ILE:CD1	3:A:337:NDG:H6C2	2.28	0.62
2:A:335:MAN:O2	2:A:335:MAN:C3	2.49	0.61
1:A:313:TYR:N	1:A:313:TYR:CD1	2.72	0.58
1:A:127:THR:HG21	5:A:653:HOH:O	2.03	0.57
1:A:218:THR:HG23	4:A:338:OGM:O	2.04	0.57
4:A:338:OGM:C2A	4:A:338:OGM:HB2	2.33	0.56
1:A:69:THR:O	1:A:84:ILE:HD12	2.04	0.56
1:A:69:THR:CB	1:A:84:ILE:HD13	2.18	0.56
1:A:145:LEU:N	1:A:145:LEU:HD23	2.18	0.56
1:A:84:ILE:HG22	1:A:85:SER:N	2.21	0.55
1:A:261:ASN:ND2	1:A:264:GLY:H	2.05	0.55
2:A:335:MAN:O2	2:A:335:MAN:O5	2.25	0.55
1:A:201:ASP:HB2	5:A:557:HOH:O	2.07	0.54
1:A:65:LYS:O	1:A:65:LYS:HG3	2.04	0.54
1:A:10:LEU:HD13	5:A:501:HOH:O	2.07	0.53
1:A:141:ILE:HD13	1:A:149:LYS:HD3	1.91	0.52
1:A:261:ASN:ND2	1:A:261:ASN:C	2.62	0.52
2:A:335:MAN:C3	2:A:336:BMA:C1	2.88	0.52
1:A:48:LEU:HD11	1:A:52:LEU:HD11	1.92	0.52
1:A:51:PHE:O	1:A:51:PHE:CD1	2.63	0.52
1:A:9:TYR:CZ	1:A:10:LEU:HD22	2.46	0.51

Continued on next page...

Continued from previous page...

Atom-1	Atom-2	Interatomic distance (Å)	Clash overlap (Å)
1:A:58:HIS:HB2	1:A:64:TYR:CG	2.45	0.51
1:A:55:LYS:HZ2	1:A:55:LYS:HB2	1.62	0.51
1:A:157:ASP:HB3	1:A:159(A):LYS:HB3	1.93	0.51
1:A:4:VAL:CG2	1:A:16:THR:HG21	2.38	0.49
1:A:7:THR:O	1:A:14:TYR:HA	2.13	0.49
1:A:150:ARG:NH2	5:A:571:HOH:O	2.45	0.48
1:A:75:TYR:HB2	1:A:78:GLY:O	2.13	0.47
2:A:335:MAN:C4	2:A:335:MAN:O2	2.62	0.47
1:A:277:GLU:HG3	1:A:282:CYS:SG	2.54	0.47
1:A:84:ILE:HD11	1:A:131:ASP:OD2	2.15	0.47
1:A:16:THR:O	1:A:28:LYS:HA	2.15	0.47
1:A:84:ILE:CG2	1:A:85:SER:N	2.77	0.47
1:A:21:GLY:HA2	1:A:87:ASP:OD1	2.14	0.47
1:A:222:THR:HA	1:A:287:THR:O	2.15	0.47
1:A:317:ASN:HA	1:A:317:ASN:HD22	1.34	0.46
1:A:58:HIS:HD2	1:A:59:GLU:H	1.63	0.46
1:A:29:VAL:HA	1:A:119:GLY:O	2.15	0.46
1:A:137:PHE:CE2	1:A:315:ILE:HG21	2.40	0.46
1:A:74:GLN:O	4:A:338:0GM:H13	2.16	0.46
1:A:27:PHE:HZ	1:A:56:TYR:HB2	1.80	0.46
1:A:6:LEU:HB2	1:A:163:GLY:HA3	1.98	0.46
1:A:121:LEU:C	1:A:121:LEU:HD12	2.36	0.46
1:A:86:GLN:HE21	1:A:98:LYS:CB	2.28	0.46
1:A:97:PRO:C	1:A:98:LYS:HG2	2.35	0.45
1:A:317:ASN:O	1:A:318:ASN:HB2	2.16	0.45
1:A:218:THR:HG23	4:A:338:0GM:HA1	2.00	0.44
1:A:159(A):LYS:HG2	1:A:159(B):ASP:N	2.31	0.44
1:A:135:PRO:HA	1:A:136:PRO:HD3	1.76	0.43
4:A:338:0GM:C12	4:A:338:0GM:H8B	2.47	0.43
1:A:58:HIS:H	1:A:58:HIS:CD2	2.36	0.43
1:A:151:PHE:HA	1:A:166:THR:O	2.19	0.43
1:A:23:PRO:CB	1:A:24:PRO:HD2	2.46	0.42
1:A:42:SER:HB3	1:A:104:ALA:O	2.20	0.42
1:A:42:SER:C	1:A:55:LYS:HG2	2.40	0.42
1:A:86:GLN:HE21	1:A:98:LYS:HB3	1.81	0.42
1:A:23:PRO:CB	1:A:24:PRO:CD	2.97	0.42
1:A:260:PHE:O	1:A:266:ASN:HA	2.20	0.42
1:A:27:PHE:N	1:A:27:PHE:CD1	2.89	0.41
1:A:58:HIS:HB2	1:A:64:TYR:CD2	2.56	0.41
1:A:266:ASN:ND2	3:A:337:NDG:C7	2.83	0.41
1:A:84:ILE:CG2	1:A:85:SER:H	2.33	0.41

Continued on next page...

Continued from previous page...

Atom-1	Atom-2	Interatomic distance (Å)	Clash overlap (Å)
1:A:8:ASN:OD1	1:A:8:ASN:C	2.59	0.41
1:A:10:LEU:O	1:A:11:ASN:CB	2.66	0.41
1:A:291:PHE:CZ	4:A:338:0GM:HB5	2.56	0.40
1:A:2:HIS:CD2	1:A:93:ASP:CB	2.89	0.40
1:A:261:ASN:HA	1:A:265:TYR:O	2.21	0.40
1:A:18:ILE:HG12	1:A:29:VAL:CG2	2.52	0.40
1:A:128:ILE:HG12	4:A:338:0GM:HD4B	2.03	0.40
1:A:80:LEU:CD1	1:A:104:ALA:HB2	2.49	0.40
1:A:223:LEU:O	1:A:224:PRO:C	2.58	0.40

All (3) symmetry-related close contacts are listed below. The label for Atom-2 includes the symmetry operator and encoded unit-cell translations to be applied.

Atom-1	Atom-2	Interatomic distance (Å)	Clash overlap (Å)
1:A:149:LYS:CE	5:A:616:HOH:O[3_565]	0.79	1.41
1:A:149:LYS:NZ	5:A:616:HOH:O[3_565]	0.89	1.31
1:A:149:LYS:CD	5:A:616:HOH:O[3_565]	1.76	0.44

5.3 Torsion angles ⓘ

5.3.1 Protein backbone ⓘ

In the following table, the Percentiles column shows the percent Ramachandran outliers of the chain as a percentile score with respect to all X-ray entries followed by that with respect to entries of similar resolution.

The Analysed column shows the number of residues for which the backbone conformation was analysed, and the total number of residues.

Mol	Chain	Analysed	Favoured	Allowed	Outliers	Percentiles
1	A	327/329 (99%)	306 (94%)	20 (6%)	1 (0%)	46 63

All (1) Ramachandran outliers are listed below:

Mol	Chain	Res	Type
1	A	159(C)	THR

5.3.2 Protein sidechains ⓘ

In the following table, the Percentiles column shows the percent sidechain outliers of the chain as a percentile score with respect to all X-ray entries followed by that with respect to entries of similar resolution.

The Analysed column shows the number of residues for which the sidechain conformation was analysed, and the total number of residues.

Mol	Chain	Analysed	Rotameric	Outliers	Percentiles
1	A	268/268 (100%)	222 (83%)	46 (17%)	2 3

All (46) residues with a non-rotameric sidechain are listed below:

Mol	Chain	Res	Type
1	A	4	VAL
1	A	10	LEU
1	A	16	THR
1	A	26	ASN
1	A	27	PHE
1	A	28	LYS
1	A	35	SER
1	A	48	LEU
1	A	51	PHE
1	A	55	LYS
1	A	58	HIS
1	A	63	SER
1	A	65	LYS
1	A	70	GLU
1	A	79	SER
1	A	90	SER
1	A	93	ASP
1	A	98	LYS
1	A	106	SER
1	A	110	LEU
1	A	111	THR
1	A	118	ASP
1	A	121	LEU
1	A	128	ILE
1	A	136	PRO
1	A	142	GLN
1	A	158	THR
1	A	159	SER
1	A	159(C)	THR
1	A	161	ASN

Continued on next page...

Continued from previous page...

Mol	Chain	Res	Type
1	A	176	LYS
1	A	185	ARG
1	A	187	LYS
1	A	199	LEU
1	A	219	SER
1	A	222	THR
1	A	224	PRO
1	A	238	LYS
1	A	241	TRP
1	A	247	LEU
1	A	261	ASN
1	A	281	SER
1	A	293	GLU
1	A	313	TYR
1	A	324	LYS
1	A	326	ILE

Some sidechains can be flipped to improve hydrogen bonding and reduce clashes. All (9) such sidechains are listed below:

Mol	Chain	Res	Type
1	A	2	HIS
1	A	43	ASN
1	A	58	HIS
1	A	86	GLN
1	A	142	GLN
1	A	161	ASN
1	A	232	ASN
1	A	261	ASN
1	A	317	ASN

5.3.3 RNA ⓘ

There are no RNA molecules in this entry.

5.4 Non-standard residues in protein, DNA, RNA chains ⓘ

There are no non-standard protein/DNA/RNA residues in this entry.

5.5 Carbohydrates ⓘ

5 carbohydrates are modelled in this entry.

In the following table, the Counts columns list the number of bonds (or angles) for which Mogul statistics could be retrieved, the number of bonds (or angles) that are observed in the model and the number of bonds (or angles) that are defined in the chemical component dictionary. The Link column lists molecule types, if any, to which the group is linked. The Z score for a bond length (or angle) is the number of standard deviations the observed value is removed from the expected value. A bond length (or angle) with $|Z| > 2$ is considered an outlier worth inspection. RMSZ is the root-mean-square of all Z scores of the bond lengths (or angles).

Mol	Type	Chain	Res	Link	Bond lengths			Bond angles		
					Counts	RMSZ	$\# Z > 2$	Counts	RMSZ	$\# Z > 2$
2	NAG	A	332	1,2	14,14,15	1.10	0	15,19,21	1.93	4 (26%)
2	NAG	A	333	2	14,14,15	1.17	1 (7%)	15,19,21	2.27	4 (26%)
2	MAN	A	334	2	11,11,12	13.58	2 (18%)	15,15,17	7.02	3 (20%)
2	MAN	A	335	2	11,11,12	13.25	4 (36%)	15,15,17	7.17	9 (60%)
2	BMA	A	336	2	11,11,12	1.65	2 (18%)	15,15,17	4.26	6 (40%)

In the following table, the Chirals column lists the number of chiral outliers, the number of chiral centers analysed, the number of these observed in the model and the number defined in the chemical component dictionary. Similar counts are reported in the Torsion and Rings columns. '-' means no outliers of that kind were identified.

Mol	Type	Chain	Res	Link	Chirals	Torsions	Rings
2	NAG	A	332	1,2	-	0/6/23/26	0/1/1/1
2	NAG	A	333	2	-	0/6/23/26	0/1/1/1
2	MAN	A	334	2	2/2/4/5	0/2/19/22	0/1/1/1
2	MAN	A	335	2	2/2/4/5	0/2/19/22	0/1/1/1
2	BMA	A	336	2	-	0/2/19/22	0/1/1/1

All (9) bond length outliers are listed below:

Mol	Chain	Res	Type	Atoms	Z	Observed(Å)	Ideal(Å)
2	A	335	MAN	C2-C3	-4.80	1.46	1.52
2	A	336	BMA	C2-C3	-4.52	1.46	1.52
2	A	335	MAN	C4-C3	-2.75	1.45	1.52
2	A	333	NAG	C1-C2	-2.70	1.48	1.52
2	A	336	BMA	O4-C4	2.00	1.47	1.43
2	A	335	MAN	O4-C4	2.03	1.47	1.43
2	A	334	MAN	O5-C1	2.10	1.47	1.43
2	A	335	MAN	O2-C2	43.50	2.40	1.43
2	A	334	MAN	O2-C2	44.94	2.43	1.43

All (26) bond angle outliers are listed below:

Mol	Chain	Res	Type	Atoms	Z	Observed(°)	Ideal(°)
2	A	334	MAN	O2-C2-C1	-18.91	71.37	109.23
2	A	335	MAN	O2-C2-C1	-18.30	72.60	109.23
2	A	334	MAN	O2-C2-C3	-18.17	73.59	110.19
2	A	335	MAN	O2-C2-C3	-16.84	76.25	110.19
2	A	333	NAG	C2-N2-C7	-5.41	116.07	123.11
2	A	332	NAG	C2-N2-C7	-3.55	118.49	123.11
2	A	333	NAG	C3-C4-C5	-2.88	105.09	110.23
2	A	332	NAG	C3-C4-C5	-2.47	105.82	110.23
2	A	333	NAG	O6-C6-C5	-2.24	103.83	111.30
2	A	335	MAN	O6-C6-C5	-2.18	104.01	111.30
2	A	332	NAG	O5-C5-C6	-2.17	102.70	107.34
2	A	335	MAN	O3-C3-C4	2.04	114.97	110.36
2	A	336	BMA	O3-C3-C2	2.08	113.81	110.01
2	A	335	MAN	C1-O5-C5	2.11	115.25	112.14
2	A	336	BMA	O5-C5-C4	2.23	113.82	110.13
2	A	336	BMA	O2-C2-C3	3.20	116.64	110.19
2	A	335	MAN	O5-C1-C2	3.42	116.36	110.89
2	A	332	NAG	C1-O5-C5	4.49	118.74	112.14
2	A	333	NAG	C1-O5-C5	4.73	119.09	112.14
2	A	335	MAN	O3-C3-C2	5.28	119.69	110.01
2	A	336	BMA	C2-C3-C4	5.57	120.76	111.05
2	A	335	MAN	C1-C2-C3	5.63	116.37	109.55
2	A	334	MAN	C1-O5-C5	5.89	120.80	112.14
2	A	335	MAN	C2-C3-C4	7.59	124.29	111.05
2	A	336	BMA	C1-C2-C3	9.83	121.46	109.55
2	A	336	BMA	C1-O5-C5	10.80	128.02	112.14

All (4) chirality outliers are listed below:

Mol	Chain	Res	Type	Atom
2	A	335	MAN	C3
2	A	335	MAN	C1
2	A	334	MAN	C3
2	A	334	MAN	C1

There are no torsion outliers.

There are no ring outliers.

3 monomers are involved in 12 short contacts:

Mol	Chain	Res	Type	Clashes	Symm-Clashes
2	A	334	MAN	4	0

Continued on next page...

Continued from previous page...

Mol	Chain	Res	Type	Clashes	Symm-Clashes
2	A	335	MAN	7	0
2	A	336	BMA	3	0

5.6 Ligand geometry

2 ligands are modelled in this entry.

In the following table, the Counts columns list the number of bonds (or angles) for which Mogul statistics could be retrieved, the number of bonds (or angles) that are observed in the model and the number of bonds (or angles) that are defined in the chemical component dictionary. The Link column lists molecule types, if any, to which the group is linked. The Z score for a bond length (or angle) is the number of standard deviations the observed value is removed from the expected value. A bond length (or angle) with $|Z| > 2$ is considered an outlier worth inspection. RMSZ is the root-mean-square of all Z scores of the bond lengths (or angles).

Mol	Type	Chain	Res	Link	Bond lengths			Bond angles		
					Counts	RMSZ	$\# Z > 2$	Counts	RMSZ	$\# Z > 2$
3	NDG	A	337	1	14,14,15	0.93	0	15,19,21	2.95	4 (26%)
4	0GM	A	338	-	67,67,67	1.69	5 (7%)	86,92,92	3.08	30 (34%)

In the following table, the Chirals column lists the number of chiral outliers, the number of chiral centers analysed, the number of these observed in the model and the number defined in the chemical component dictionary. Similar counts are reported in the Torsion and Rings columns. '-' means no outliers of that kind were identified.

Mol	Type	Chain	Res	Link	Chirals	Torsions	Rings
3	NDG	A	337	1	-	0/6/23/26	0/1/1/1
4	0GM	A	338	-	-	0/63/63/63	0/4/6/6

All (5) bond length outliers are listed below:

Mol	Chain	Res	Type	Atoms	Z	Observed(Å)	Ideal(Å)
4	A	338	0GM	C14-C13	-2.98	1.37	1.43
4	A	338	0GM	CA4-N3	-2.05	1.42	1.46
4	A	338	0GM	C4A-C11	-2.01	1.37	1.42
4	A	338	0GM	C2B-C1B	2.63	1.42	1.37
4	A	338	0GM	C1-N1	10.69	1.58	1.34

All (34) bond angle outliers are listed below:

Mol	Chain	Res	Type	Atoms	Z	Observed(°)	Ideal(°)
4	A	338	0GM	CA2-N1-C1	-12.21	100.21	123.15
4	A	338	0GM	CA1-C1-N1	-6.61	101.38	116.80
4	A	338	0GM	C4A-C11-C12	-6.47	110.53	119.12
4	A	338	0GM	C4A-C3A-C2A	-4.50	113.66	120.98
3	A	337	NDG	C2-N2-C7	-4.33	117.47	123.11
4	A	338	0GM	C1A-CB1-CA	-4.14	108.32	114.06
4	A	338	0GM	CB5-CE1-CD5	-3.49	112.35	120.59
4	A	338	0GM	CD6-CE2-CZ	-3.24	115.56	120.25
4	A	338	0GM	CA-C-N	-2.87	111.73	116.18
3	A	337	NDG	O3-C3-C4	-2.77	104.12	110.36
4	A	338	0GM	C7B-C6B-C5B	-2.59	116.72	120.45
4	A	338	0GM	OE1-CD-CG	-2.42	117.76	121.97
4	A	338	0GM	CG-CB-CA1	-2.20	108.97	112.99
4	A	338	0GM	C4B-C13-C5B	-2.16	118.15	123.20
4	A	338	0GM	O2-C2-CM	-2.08	118.13	121.36
4	A	338	0GM	C6B-C7B-C8B	2.00	123.34	120.45
4	A	338	0GM	CB-CA1-N	2.20	114.96	110.81
4	A	338	0GM	CG-CD-N4	2.27	120.41	116.46
4	A	338	0GM	CH-CA2-N1	2.28	113.31	109.74
4	A	338	0GM	C1A-C12-C11	2.32	121.92	118.95
4	A	338	0GM	O-C-N	2.59	127.96	122.91
4	A	338	0GM	C5A-C11-C12	2.87	122.93	119.12
4	A	338	0GM	CE2-CD6-CG3	3.04	125.27	120.65
4	A	338	0GM	CM-C2-N2	3.10	120.17	116.38
4	A	338	0GM	CA1-N-C	3.35	129.16	121.66
4	A	338	0GM	CH-CM-C2	3.69	117.20	112.34
3	A	337	NDG	C1-O-C5	4.21	118.33	112.14
4	A	338	0GM	CG3-CA4-N3	4.35	122.47	112.98
4	A	338	0GM	CZ-CE1-CD5	4.50	125.03	118.53
4	A	338	0GM	CA4-N3-C3	6.21	131.14	122.36
4	A	338	0GM	O1-C1-N1	7.65	137.81	122.91
4	A	338	0GM	C3A-C4A-C11	8.03	133.13	120.45
3	A	337	NDG	O-C5-C4	8.83	124.77	110.13
4	A	338	0GM	CE1-CB5-N4	12.29	139.80	112.98

There are no chirality outliers.

There are no torsion outliers.

There are no ring outliers.

2 monomers are involved in 11 short contacts:

Mol	Chain	Res	Type	Clashes	Symm-Clashes
3	A	337	NDG	4	0

Continued on next page...

Continued from previous page...

Mol	Chain	Res	Type	Clashes	Symm-Clashes
4	A	338	0GM	7	0

5.7 Other polymers [i](#)

There are no such residues in this entry.

5.8 Polymer linkage issues [i](#)

There are no chain breaks in this entry.

6 Fit of model and data [i](#)

6.1 Protein, DNA and RNA chains [i](#)

In the following table, the column labelled ‘#RSRZ> 2’ contains the number (and percentage) of RSRZ outliers, followed by percent RSRZ outliers for the chain as percentile scores relative to all X-ray entries and entries of similar resolution. The OWAB column contains the minimum, median, 95th percentile and maximum values of the occupancy-weighted average B-factor per residue. The column labelled ‘Q< 0.9’ lists the number of (and percentage) of residues with an average occupancy less than 0.9.

Mol	Chain	Analysed	<RSRZ>	#RSRZ>2	OWAB(Å ²)	Q<0.9
1	A	329/329 (100%)	-0.72	7 (2%) 67 66	11, 34, 76, 141	4 (1%)

All (7) RSRZ outliers are listed below:

Mol	Chain	Res	Type	RSRZ
1	A	241	TRP	12.2
1	A	242	THR	5.6
1	A	243	GLY	5.3
1	A	160	GLU	3.6
1	A	240	GLY	2.6
1	A	159(B)	ASP	2.5
1	A	159(C)	THR	2.2

6.2 Non-standard residues in protein, DNA, RNA chains [i](#)

There are no non-standard protein/DNA/RNA residues in this entry.

6.3 Carbohydrates [i](#)

In the following table, the Atoms column lists the number of modelled atoms in the group and the number defined in the chemical component dictionary. LLDF column lists the quality of electron density of the group with respect to its neighbouring residues in protein, DNA or RNA chains. The B-factors column lists the minimum, median, 95th percentile and maximum values of B factors of atoms in the group. The column labelled ‘Q< 0.9’ lists the number of atoms with occupancy less than 0.9.

Mol	Type	Chain	Res	Atoms	RSCC	RSR	LLDF	B-factors(Å ²)	Q<0.9
2	NAG	A	332	14/15	0.93	0.17	0.72	33,49,89,124	0
2	BMA	A	336	11/12	0.79	0.28	-	39,86,157,157	0
2	NAG	A	333	14/15	0.97	0.10	-	21,35,68,143	0

Continued on next page...

Continued from previous page...

Mol	Type	Chain	Res	Atoms	RSCC	RSR	LLDF	B-factors(\AA^2)	Q<0.9
2	MAN	A	335	11/12	0.95	0.14	-	38,52,153,157	0
2	MAN	A	334	11/12	0.90	0.18	-	31,53,80,103	0

6.4 Ligands [i](#)

In the following table, the Atoms column lists the number of modelled atoms in the group and the number defined in the chemical component dictionary. LLDF column lists the quality of electron density of the group with respect to its neighbouring residues in protein, DNA or RNA chains. The B-factors column lists the minimum, median, 95th percentile and maximum values of B factors of atoms in the group. The column labelled 'Q< 0.9' lists the number of atoms with occupancy less than 0.9.

Mol	Type	Chain	Res	Atoms	RSCC	RSR	LLDF	B-factors(\AA^2)	Q<0.9
3	NDG	A	337	14/15	0.82	0.20	7.13	44,64,120,134	0
4	0GM	A	338	62/62	0.89	0.17	1.92	20,43,80,93	0

6.5 Other polymers [i](#)

There are no such residues in this entry.