



Full wwPDB X-ray Structure Validation Report ⓘ

Feb 1, 2016 – 08:43 AM GMT

PDB ID : 3FSU
Title : Crystal Structure of Escherichia coli Methylenetetrahydrofolate Reductase
Double Mutant Phe223LeuGlu28Gln complexed with methyltetrahydrofolate
Authors : Tanner, J.J.
Deposited on : 2009-01-12
Resolution : 1.70 Å(reported)

This is a Full wwPDB X-ray Structure Validation Report for a publicly released PDB entry.
We welcome your comments at validation@mail.wwpdb.org
A user guide is available at
<http://wwpdb.org/validation/2016/XrayValidationReportHelp>
with specific help available everywhere you see the ⓘ symbol.

The following versions of software and data (see [references ⓘ](#)) were used in the production of this report:

MolProbity : 4.02b-467
Mogul : 1.7 (RC4), CSD as536be (2015)
Xtriage (Phenix) : 1.9-1692
EDS : rb-20026688
Percentile statistics : 20151230.v01 (using entries in the PDB archive December 30th 2015)
Refmac : 5.8.0135
CCP4 : 6.5.0
Ideal geometry (proteins) : Engh & Huber (2001)
Ideal geometry (DNA, RNA) : Parkinson et al. (1996)
Validation Pipeline (wwPDB-VP) : trunk26865

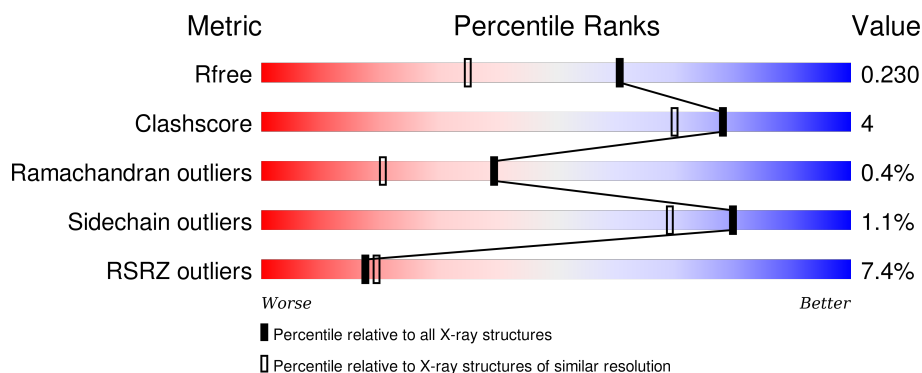
1 Overall quality at a glance

The following experimental techniques were used to determine the structure:

X-RAY DIFFRACTION

The reported resolution of this entry is 1.70 Å.

Percentile scores (ranging between 0-100) for global validation metrics of the entry are shown in the following graphic. The table shows the number of entries on which the scores are based.



Metric	Whole archive (#Entries)	Similar resolution (#Entries, resolution range(Å))
R_{free}	91344	3190 (1.70-1.70)
Clashscore	102246	3585 (1.70-1.70)
Ramachandran outliers	100387	3527 (1.70-1.70)
Sidechain outliers	100360	3527 (1.70-1.70)
RSRZ outliers	91569	3200 (1.70-1.70)

The table below summarises the geometric issues observed across the polymeric chains and their fit to the electron density. The red, orange, yellow and green segments on the lower bar indicate the fraction of residues that contain outliers for ≥ 3 , 2, 1 and 0 types of geometric quality criteria. A grey segment represents the fraction of residues that are not modelled. The numeric value for each fraction is indicated below the corresponding segment, with a dot representing fractions $\leq 5\%$. The upper red bar (where present) indicates the fraction of residues that have poor fit to the electron density. The numeric value is given above the bar.

Mol	Chain	Length	Quality of chain
1	A	304	<div> <div>2%</div> <div>87%</div> <div>7%</div> <div>6%</div> </div>
1	C	304	<div> <div>82%</div> <div>6%</div> <div>13%</div> </div>
1	E	304	<div> <div>17%</div> <div>83%</div> <div>8%</div> <div>9%</div> </div>

The following table lists non-polymeric compounds, carbohydrate monomers and non-standard residues in protein, DNA, RNA chains that are outliers for geometric or electron-density-fit criteria:

Mol	Type	Chain	Res	Chirality	Geometry	Clashes	Electron density
5	SO4	E	305	-	-	-	X

2 Entry composition

There are 6 unique types of molecules in this entry. The entry contains 7097 atoms, of which 0 are hydrogens and 0 are deuteriums.

In the tables below, the ZeroOcc column contains the number of atoms modelled with zero occupancy, the AltConf column contains the number of residues with at least one atom in alternate conformation and the Trace column contains the number of residues modelled with at most 2 atoms.

- Molecule 1 is a protein called 5,10-methylenetetrahydrofolate reductase.

Mol	Chain	Residues	Atoms					ZeroOcc	AltConf	Trace
1	A	285	Total	C	N	O	S	0	12	0
			2267	1439	396	419	13			
1	C	266	Total	C	N	O	S	0	11	0
			2097	1337	359	390	11			
1	E	278	Total	C	N	O	S	0	7	0
			2095	1334	362	387	12			

There are 30 discrepancies between the modelled and reference sequences:

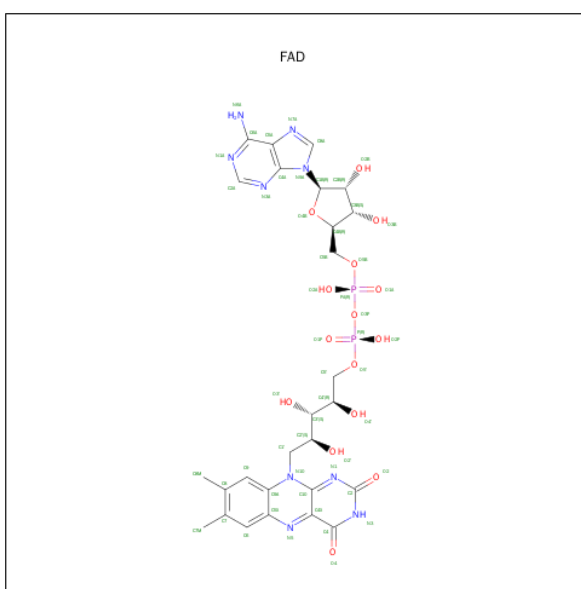
Chain	Residue	Modelled	Actual	Comment	Reference
A	28	GLN	GLU	ENGINEERED	UNP P0AEZ1
A	223	LEU	PHE	ENGINEERED	UNP P0AEZ1
A	297	LEU	-	EXPRESSION TAG	UNP P0AEZ1
A	298	GLU	-	EXPRESSION TAG	UNP P0AEZ1
A	299	HIS	-	EXPRESSION TAG	UNP P0AEZ1
A	300	HIS	-	EXPRESSION TAG	UNP P0AEZ1
A	301	HIS	-	EXPRESSION TAG	UNP P0AEZ1
A	302	HIS	-	EXPRESSION TAG	UNP P0AEZ1
A	303	HIS	-	EXPRESSION TAG	UNP P0AEZ1
A	304	HIS	-	EXPRESSION TAG	UNP P0AEZ1
C	28	GLN	GLU	ENGINEERED	UNP P0AEZ1
C	223	LEU	PHE	ENGINEERED	UNP P0AEZ1
C	297	LEU	-	EXPRESSION TAG	UNP P0AEZ1
C	298	GLU	-	EXPRESSION TAG	UNP P0AEZ1
C	299	HIS	-	EXPRESSION TAG	UNP P0AEZ1
C	300	HIS	-	EXPRESSION TAG	UNP P0AEZ1
C	301	HIS	-	EXPRESSION TAG	UNP P0AEZ1
C	302	HIS	-	EXPRESSION TAG	UNP P0AEZ1
C	303	HIS	-	EXPRESSION TAG	UNP P0AEZ1
C	304	HIS	-	EXPRESSION TAG	UNP P0AEZ1
E	28	GLN	GLU	ENGINEERED	UNP P0AEZ1
E	223	LEU	PHE	ENGINEERED	UNP P0AEZ1
E	297	LEU	-	EXPRESSION TAG	UNP P0AEZ1

Continued on next page...

Continued from previous page...

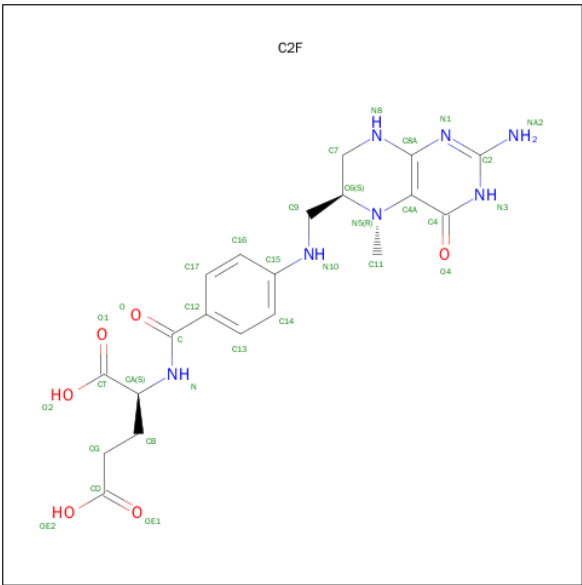
Chain	Residue	Modelled	Actual	Comment	Reference
E	298	GLU	-	EXPRESSION TAG	UNP P0AEZ1
E	299	HIS	-	EXPRESSION TAG	UNP P0AEZ1
E	300	HIS	-	EXPRESSION TAG	UNP P0AEZ1
E	301	HIS	-	EXPRESSION TAG	UNP P0AEZ1
E	302	HIS	-	EXPRESSION TAG	UNP P0AEZ1
E	303	HIS	-	EXPRESSION TAG	UNP P0AEZ1
E	304	HIS	-	EXPRESSION TAG	UNP P0AEZ1

- Molecule 2 is FLAVIN-ADENINE DINUCLEOTIDE (three-letter code: FAD) (formula: $C_{27}H_{33}N_9O_{15}P_2$).



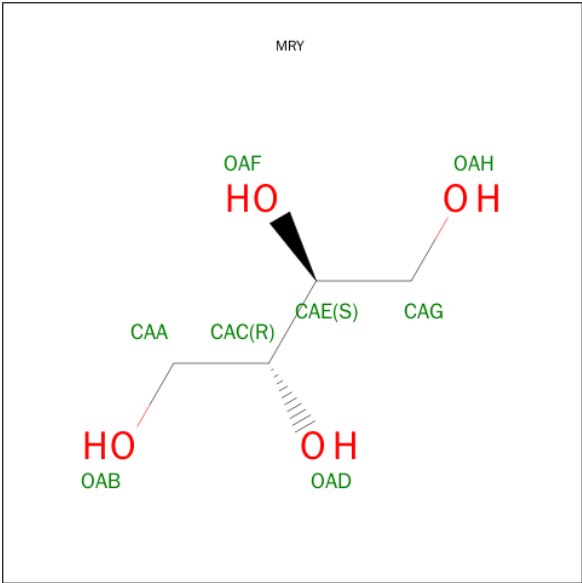
Mol	Chain	Residues	Atoms					ZeroOcc	AltConf
2	A	1	Total	C	N	O	P	0	0
			53	27	9	15	2		
2	C	1	Total	C	N	O	P	0	0
			53	27	9	15	2		
2	E	1	Total	C	N	O	P	0	0
			53	27	9	15	2		

- Molecule 3 is 5-METHYL-5,6,7,8-TETRAHYDROFOLIC ACID (three-letter code: C2F) (formula: $C_{20}H_{25}N_7O_6$).



Mol	Chain	Residues	Atoms				ZeroOcc	AltConf
3	A	1	Total	C	N	O	0	0
			33	20	7	6		
3	E	1	Total	C	N	O	0	0
			33	20	7	6		

- Molecule 4 is MESO-ERYTHRITOL (three-letter code: MRY) (formula: C₄H₁₀O₄).



Mol	Chain	Residues	Atoms			ZeroOcc	AltConf
4	C	1	Total	C	O	0	0
			8	4	4		

- Molecule 5 is SULFATE ION (three-letter code: SO4) (formula: O₄S).



Mol	Chain	Residues	Atoms			ZeroOcc	AltConf
5	E	1	Total	O	S	0	0
			5	4	1		

- Molecule 6 is water.

Mol	Chain	Residues	Atoms		ZeroOcc	AltConf
6	A	161	Total	O	0	0
			161	161		
6	C	173	Total	O	0	0
			173	173		
6	E	66	Total	O	0	0
			66	66		

4 Data and refinement statistics

Property	Value	Source
Space group	C 1 2 1	Depositor
Cell constants a, b, c, α , β , γ	102.91Å 127.91Å 97.61Å 90.00° 121.73° 90.00°	Depositor
Resolution (Å)	43.71 – 1.70 43.71 – 1.70	Depositor EDS
% Data completeness (in resolution range)	99.8 (43.71-1.70) 99.8 (43.71-1.70)	Depositor EDS
R_{merge}	0.03	Depositor
R_{sym}	(Not available)	Depositor
$\langle I/\sigma(I) \rangle$ ¹	3.56 (at 1.70Å)	Xtriage
Refinement program	PHENIX (phenix.refine)	Depositor
R, R_{free}	0.197 , 0.220 0.213 , 0.230	Depositor DCC
R_{free} test set	5867 reflections (5.26%)	DCC
Wilson B-factor (Å ²)	22.9	Xtriage
Anisotropy	0.345	Xtriage
Bulk solvent k_{sol} (e/Å ³), B_{sol} (Å ²)	0.35 , 44.8	EDS
Estimated twinning fraction	0.000 for h,-k,-h-l	Xtriage
L-test for twinning ²	$\langle L \rangle = 0.52$, $\langle L^2 \rangle = 0.35$	Xtriage
Outliers	0 of 117404 reflections	Xtriage
F_o, F_c correlation	0.95	EDS
Total number of atoms	7097	wwPDB-VP
Average B, all atoms (Å ²)	31.0	wwPDB-VP

Xtriage's analysis on translational NCS is as follows: *The largest off-origin peak in the Patterson function is 4.97% of the height of the origin peak. No significant pseudotranslation is detected.*

¹Intensities estimated from amplitudes.

²Theoretical values of $\langle |L| \rangle$, $\langle L^2 \rangle$ for acentric reflections are 0.5, 0.375 respectively for untwinned datasets, and 0.333, 0.2 for perfectly twinned datasets.

5 Model quality [i](#)

5.1 Standard geometry [i](#)

Bond lengths and bond angles in the following residue types are not validated in this section: C2F, MRY, FAD, SO4

The Z score for a bond length (or angle) is the number of standard deviations the observed value is removed from the expected value. A bond length (or angle) with $|Z| > 5$ is considered an outlier worth inspection. RMSZ is the root-mean-square of all Z scores of the bond lengths (or angles).

Mol	Chain	Bond lengths		Bond angles	
		RMSZ	# Z >5	RMSZ	# Z >5
1	A	0.35	0/2345	0.51	0/3175
1	C	0.35	0/2171	0.54	0/2947
1	E	0.28	0/2155	0.44	0/2933
All	All	0.33	0/6671	0.50	0/9055

There are no bond length outliers.

There are no bond angle outliers.

There are no chirality outliers.

There are no planarity outliers.

5.2 Too-close contacts [i](#)

In the following table, the Non-H and H(model) columns list the number of non-hydrogen atoms and hydrogen atoms in the chain respectively. The H(added) column lists the number of hydrogen atoms added and optimized by MolProbity. The Clashes column lists the number of clashes within the asymmetric unit, whereas Symm-Clashes lists symmetry related clashes.

Mol	Chain	Non-H	H(model)	H(added)	Clashes	Symm-Clashes
1	A	2267	0	2267	16	0
1	C	2097	0	2071	16	0
1	E	2095	0	2006	22	0
2	A	53	0	30	0	0
2	C	53	0	30	2	0
2	E	53	0	29	2	0
3	A	33	0	25	1	0
3	E	33	0	25	1	0
4	C	8	0	10	0	0
5	E	5	0	0	0	0

Continued on next page...

Continued from previous page...

Mol	Chain	Non-H	H(model)	H(added)	Clashes	Symm-Clashes
6	A	161	0	0	0	0
6	C	173	0	0	0	0
6	E	66	0	0	0	0
All	All	7097	0	6493	47	0

The all-atom clashscore is defined as the number of clashes found per 1000 atoms (including hydrogen atoms). The all-atom clashscore for this structure is 4.

All (47) close contacts within the same asymmetric unit are listed below, sorted by their clash magnitude.

Atom-1	Atom-2	Interatomic distance (Å)	Clash overlap (Å)
1:C:255:ASN:HD22	1:E:255:ASN:HD22	1.22	0.84
1:A:277:LEU:HD13	3:A:995:C2F:HG2	1.68	0.74
1:C:238:MET:HG3	1:C:252[A]:VAL:HG11	1.71	0.71
1:C:255:ASN:HD22	1:E:255:ASN:ND2	1.91	0.69
1:E:277:LEU:HD13	3:E:995:C2F:HG2	1.74	0.68
1:E:16:LEU:O	1:E:19:VAL:HG22	1.98	0.64
1:A:163:GLN:H	1:A:163:GLN:HE21	1.45	0.63
1:A:238[A]:MET:HG3	1:A:252[A]:VAL:HG11	1.81	0.62
1:C:222:LYS:O	1:C:226:MET:HG3	2.01	0.60
1:C:263:ILE:HD11	1:E:9:ARG:HD2	1.84	0.59
1:C:179:ARG:HB2	1:C:179:ARG:CZ	2.32	0.59
1:E:117:LEU:HD13	2:E:395:FAD:C4X	2.32	0.58
1:C:238:MET:HG3	1:C:252[A]:VAL:CG1	2.34	0.58
1:A:20:GLN:HG2	1:A:291:GLY:HA3	1.84	0.58
1:A:163:GLN:H	1:A:163:GLN:NE2	2.01	0.58
1:C:263:ILE:CD1	1:E:9:ARG:HD2	2.36	0.56
1:A:63:ASN:OD1	1:A:93:ASP:HB3	2.07	0.55
1:A:238[A]:MET:HG3	1:A:252[A]:VAL:CG1	2.37	0.54
1:E:45:ILE:HD13	1:E:77:ILE:HG12	1.92	0.52
1:A:104[B]:ARG:HG3	1:A:142:VAL:HG13	1.92	0.51
1:A:19:VAL:CG1	1:A:23:ILE:HG12	2.41	0.51
1:C:61:GLY:HA3	1:C:64:SER:OG	2.11	0.51
1:C:263:ILE:CD1	1:E:9:ARG:CD	2.90	0.50
1:A:218:LYS:HE3	1:A:243:ASP:CG	2.33	0.48
1:E:196:ASP:O	1:E:199:VAL:HG12	2.15	0.46
1:E:138:LEU:C	1:E:138:LEU:HD23	2.36	0.46
1:E:168:ASN:O	1:E:172:LYS:HG3	2.16	0.45
1:E:209:PRO:HD2	1:E:271:ASP:O	2.16	0.45
2:C:395:FAD:H1'2	2:C:395:FAD:H9	1.72	0.45
1:A:104[B]:ARG:HG3	1:A:142:VAL:CG1	2.47	0.44

Continued on next page...

Continued from previous page...

Atom-1	Atom-2	Interatomic distance (Å)	Clash overlap (Å)
1:A:19:VAL:HG13	1:A:23:ILE:HG12	2.00	0.44
1:C:263:ILE:HD11	1:E:9:ARG:CD	2.47	0.44
1:E:221:LYS:HA	1:E:231[A]:ILE:HD11	1.98	0.44
1:A:209:PRO:HD2	1:A:271:ASP:O	2.18	0.44
1:E:153:PRO:HA	1:E:194:PHE:CG	2.53	0.43
1:E:117:LEU:HD13	2:E:395:FAD:N5	2.33	0.43
1:E:163:GLN:HA	1:E:163:GLN:NE2	2.34	0.43
1:C:263:ILE:HD12	1:E:9:ARG:CD	2.49	0.42
1:C:251:LEU:HD23	1:E:251:LEU:HD23	2.02	0.42
1:A:163:GLN:NE2	1:A:163:GLN:N	2.67	0.42
1:C:132:ALA:HB3	1:C:172:LYS:HD3	2.01	0.42
2:C:395:FAD:H2'	2:C:395:FAD:O5'	2.20	0.42
1:A:92:ILE:HB	1:A:118[A]:ARG:HD2	2.02	0.42
1:C:263:ILE:HD12	1:E:9:ARG:HD3	2.01	0.42
1:C:96:PRO:O	1:C:100[A]:ARG:HG3	2.20	0.41
1:A:167:LEU:HD23	1:A:167:LEU:HA	1.90	0.40
1:E:145:PHE:HB2	1:E:147:ILE:HD11	2.04	0.40

There are no symmetry-related clashes.

5.3 Torsion angles ⓘ

5.3.1 Protein backbone ⓘ

In the following table, the Percentiles column shows the percent Ramachandran outliers of the chain as a percentile score with respect to all X-ray entries followed by that with respect to entries of similar resolution.

The Analysed column shows the number of residues for which the backbone conformation was analysed, and the total number of residues.

Mol	Chain	Analysed	Favoured	Allowed	Outliers	Percentiles	
1	A	293/304 (96%)	289 (99%)	3 (1%)	1 (0%)	46	26
1	C	273/304 (90%)	269 (98%)	3 (1%)	1 (0%)	39	20
1	E	279/304 (92%)	273 (98%)	5 (2%)	1 (0%)	39	20
All	All	845/912 (93%)	831 (98%)	11 (1%)	3 (0%)	39	20

All (3) Ramachandran outliers are listed below:

Mol	Chain	Res	Type
1	A	155	VAL
1	C	155	VAL
1	E	155	VAL

5.3.2 Protein sidechains ⓘ

In the following table, the Percentiles column shows the percent sidechain outliers of the chain as a percentile score with respect to all X-ray entries followed by that with respect to entries of similar resolution.

The Analysed column shows the number of residues for which the sidechain conformation was analysed, and the total number of residues.

Mol	Chain	Analysed	Rotameric	Outliers	Percentiles	
1	A	244/258 (95%)	240 (98%)	4 (2%)	70	54
1	C	223/258 (86%)	220 (99%)	3 (1%)	76	62
1	E	210/258 (81%)	209 (100%)	1 (0%)	92	88
All	All	677/774 (88%)	669 (99%)	8 (1%)	80	65

All (8) residues with a non-rotameric sidechain are listed below:

Mol	Chain	Res	Type
1	A	163	GLN
1	A	206	GLU
1	A	259[A]	ASP
1	A	259[B]	ASP
1	C	118	ARG
1	C	121	LEU
1	C	259	ASP
1	E	146	ASP

Some sidechains can be flipped to improve hydrogen bonding and reduce clashes. All (11) such sidechains are listed below:

Mol	Chain	Res	Type
1	A	14	GLN
1	A	28	GLN
1	A	163	GLN
1	A	228	ASN
1	C	28	GLN
1	E	14	GLN
1	E	20	GLN

Continued on next page...

Continued from previous page...

Mol	Chain	Res	Type
1	E	28	GLN
1	E	163	GLN
1	E	228	ASN
1	E	255	ASN

5.3.3 RNA [i](#)

There are no RNA molecules in this entry.

5.4 Non-standard residues in protein, DNA, RNA chains [i](#)

There are no non-standard protein/DNA/RNA residues in this entry.

5.5 Carbohydrates [i](#)

There are no carbohydrates in this entry.

5.6 Ligand geometry [i](#)

7 ligands are modelled in this entry.

In the following table, the Counts columns list the number of bonds (or angles) for which Mogul statistics could be retrieved, the number of bonds (or angles) that are observed in the model and the number of bonds (or angles) that are defined in the chemical component dictionary. The Link column lists molecule types, if any, to which the group is linked. The Z score for a bond length (or angle) is the number of standard deviations the observed value is removed from the expected value. A bond length (or angle) with $|Z| > 2$ is considered an outlier worth inspection. RMSZ is the root-mean-square of all Z scores of the bond lengths (or angles).

Mol	Type	Chain	Res	Link	Bond lengths			Bond angles		
					Counts	RMSZ	$\# Z > 2$	Counts	RMSZ	$\# Z > 2$
2	FAD	A	395	-	48,58,58	3.65	26 (54%)	54,89,89	2.74	14 (25%)
3	C2F	A	995	-	25,35,35	5.46	14 (56%)	27,49,49	2.11	9 (33%)
2	FAD	C	395	-	48,58,58	3.52	27 (56%)	54,89,89	2.63	12 (22%)
4	MRY	C	5320	-	7,7,7	0.82	0	6,8,8	1.02	1 (16%)
5	SO4	E	305	-	4,4,4	0.16	0	6,6,6	0.13	0
2	FAD	E	395	-	48,58,58	4.26	33 (68%)	54,89,89	2.97	17 (31%)
3	C2F	E	995	-	25,35,35	5.72	15 (60%)	27,49,49	2.10	8 (29%)

In the following table, the Chirals column lists the number of chiral outliers, the number of chiral centers analysed, the number of these observed in the model and the number defined in the chemical component dictionary. Similar counts are reported in the Torsion and Rings columns. '-' means no outliers of that kind were identified.

Mol	Type	Chain	Res	Link	Chirals	Torsions	Rings
2	FAD	A	395	-	-	0/30/50/50	0/6/6/6
3	C2F	A	995	-	-	0/16/35/35	0/3/3/3
2	FAD	C	395	-	-	0/30/50/50	0/6/6/6
4	MRY	C	5320	-	-	0/8/8/8	0/0/0/0
5	SO4	E	305	-	-	0/0/0/0	0/0/0/0
2	FAD	E	395	-	-	0/30/50/50	0/6/6/6
3	C2F	E	995	-	-	0/16/35/35	0/3/3/3

All (115) bond length outliers are listed below:

Mol	Chain	Res	Type	Atoms	Z	Observed(Å)	Ideal(Å)
2	E	395	FAD	O2'-C2'	-12.32	1.15	1.43
2	A	395	FAD	O2'-C2'	-12.15	1.16	1.43
2	C	395	FAD	O2'-C2'	-10.45	1.19	1.43
2	E	395	FAD	C1'-N10	-6.53	1.41	1.48
2	C	395	FAD	C1'-N10	-5.72	1.42	1.48
2	A	395	FAD	PA-O2A	-4.63	1.35	1.54
2	A	395	FAD	C1'-N10	-4.41	1.43	1.48
2	E	395	FAD	P-O2P	-3.82	1.38	1.54
2	C	395	FAD	PA-O2A	-3.77	1.38	1.54
2	A	395	FAD	P-O2P	-3.69	1.39	1.54
2	C	395	FAD	P-O2P	-3.64	1.39	1.54
2	E	395	FAD	PA-O2A	-3.23	1.41	1.54
2	A	395	FAD	O4'-C4'	-2.85	1.37	1.43
2	E	395	FAD	O3B-C3B	-2.62	1.36	1.43
2	C	395	FAD	O4'-C4'	-2.45	1.37	1.43
2	A	395	FAD	O5B-C5B	-2.43	1.34	1.44
2	E	395	FAD	O4'-C4'	-2.36	1.38	1.43
3	A	995	C2F	O-C	-2.30	1.18	1.23
2	C	395	FAD	O2B-C2B	-2.20	1.37	1.43
2	E	395	FAD	O3'-C3'	-2.15	1.37	1.43
2	A	395	FAD	O5'-C5'	-2.13	1.36	1.44
2	E	395	FAD	O2B-C2B	-2.09	1.38	1.43
2	A	395	FAD	C5A-C4A	2.03	1.45	1.40
2	C	395	FAD	C10-N1	2.10	1.39	1.35
2	C	395	FAD	C5A-C4A	2.10	1.45	1.40
2	E	395	FAD	C5A-N7A	2.15	1.46	1.39
3	E	995	C2F	C4A-C8A	2.20	1.45	1.41
3	E	995	C2F	C15-N10	2.24	1.45	1.38

Continued on next page...

Continued from previous page...

Mol	Chain	Res	Type	Atoms	Z	Observed(Å)	Ideal(Å)
2	E	395	FAD	PA-O1A	2.30	1.59	1.51
2	C	395	FAD	P-O1P	2.37	1.59	1.51
2	E	395	FAD	C5'-C4'	2.43	1.55	1.51
2	E	395	FAD	C4-C4X	2.44	1.46	1.41
2	C	395	FAD	C6A-N6A	2.67	1.43	1.34
2	A	395	FAD	C4-C4X	2.72	1.46	1.41
2	C	395	FAD	C4-C4X	2.77	1.46	1.41
2	A	395	FAD	C4X-C10	2.81	1.46	1.41
2	E	395	FAD	C10-N10	2.84	1.42	1.39
2	E	395	FAD	C5A-C4A	2.85	1.46	1.40
2	A	395	FAD	C6A-N6A	2.90	1.43	1.34
2	E	395	FAD	C6A-N6A	2.96	1.44	1.34
2	C	395	FAD	C9A-C5X	3.02	1.48	1.42
2	A	395	FAD	C10-N10	3.22	1.42	1.39
2	C	395	FAD	C10-N10	3.27	1.42	1.39
2	C	395	FAD	O4-C4	3.30	1.32	1.24
2	E	395	FAD	O4B-C1B	3.39	1.45	1.41
2	C	395	FAD	C5X-N5	3.41	1.40	1.35
2	A	395	FAD	C9A-C5X	3.56	1.49	1.42
2	E	395	FAD	C4X-C10	3.61	1.47	1.41
2	E	395	FAD	C9A-C5X	3.75	1.50	1.42
2	A	395	FAD	C9-C8	3.75	1.48	1.37
2	C	395	FAD	C4X-C10	3.77	1.48	1.41
2	E	395	FAD	C10-N1	3.83	1.42	1.35
2	E	395	FAD	C9A-N10	3.86	1.44	1.38
2	C	395	FAD	C6-C7	3.99	1.48	1.37
2	E	395	FAD	C6-C7	4.00	1.48	1.37
2	A	395	FAD	O4-C4	4.02	1.34	1.24
2	A	395	FAD	C6-C7	4.04	1.48	1.37
2	E	395	FAD	C5X-N5	4.09	1.41	1.35
2	C	395	FAD	C8A-N7A	4.16	1.42	1.34
2	A	395	FAD	C4-N3	4.19	1.40	1.33
2	C	395	FAD	C8-C7	4.24	1.52	1.41
2	C	395	FAD	C4-N3	4.36	1.41	1.33
2	E	395	FAD	C8-C7	4.37	1.52	1.41
2	A	395	FAD	C5X-N5	4.39	1.42	1.35
2	C	395	FAD	C9-C8	4.39	1.49	1.37
2	A	395	FAD	C8-C7	4.43	1.52	1.41
2	A	395	FAD	C8A-N7A	4.50	1.43	1.34
2	A	395	FAD	C9-C9A	4.64	1.50	1.40
2	E	395	FAD	O4-C4	4.65	1.35	1.24
2	C	395	FAD	C9-C9A	4.66	1.50	1.40

Continued on next page...

Continued from previous page...

Mol	Chain	Res	Type	Atoms	Z	Observed(Å)	Ideal(Å)
2	C	395	FAD	C6-C5X	4.77	1.49	1.41
2	E	395	FAD	C9-C9A	4.81	1.51	1.40
2	E	395	FAD	C9-C8	4.83	1.51	1.37
2	A	395	FAD	C4X-N5	4.90	1.41	1.33
3	A	995	C2F	C-N	4.97	1.45	1.34
2	C	395	FAD	C4A-N3A	5.00	1.43	1.35
3	E	995	C2F	C-N	5.09	1.45	1.34
2	A	395	FAD	C6-C5X	5.26	1.49	1.41
3	A	995	C2F	C2-NA2	5.34	1.45	1.34
2	A	395	FAD	C4A-N3A	5.44	1.43	1.35
3	E	995	C2F	C2-NA2	5.51	1.45	1.34
2	E	395	FAD	C4-N3	5.60	1.43	1.33
2	E	395	FAD	C8A-N7A	5.64	1.45	1.34
3	A	995	C2F	C4-N3	5.74	1.43	1.33
2	C	395	FAD	C4X-N5	5.74	1.42	1.33
3	A	995	C2F	O4-C4	6.05	1.39	1.24
3	E	995	C2F	C4-N3	6.32	1.44	1.33
3	E	995	C2F	O4-C4	6.52	1.40	1.24
2	E	395	FAD	C6-C5X	6.85	1.52	1.41
2	E	395	FAD	C4X-N5	6.91	1.44	1.33
2	C	395	FAD	C2A-N1A	7.06	1.47	1.33
2	A	395	FAD	C2A-N1A	7.31	1.47	1.33
3	A	995	C2F	C8A-N1	7.46	1.48	1.34
2	E	395	FAD	C4A-N3A	7.47	1.46	1.35
2	C	395	FAD	C2A-N3A	7.53	1.45	1.32
3	A	995	C2F	C2-N1	7.57	1.48	1.35
3	E	995	C2F	C8A-N1	7.67	1.48	1.34
3	A	995	C2F	C17-C16	7.78	1.52	1.38
2	A	395	FAD	C2A-N3A	7.79	1.45	1.32
3	A	995	C2F	C2-N3	7.79	1.49	1.35
3	E	995	C2F	C2-N1	7.86	1.49	1.35
3	E	995	C2F	C17-C16	8.06	1.53	1.38
2	E	395	FAD	C2A-N1A	8.15	1.49	1.33
3	E	995	C2F	C2-N3	8.20	1.49	1.35
3	A	995	C2F	C14-C13	8.23	1.53	1.38
3	A	995	C2F	C17-C12	8.30	1.53	1.39
3	A	995	C2F	C14-C15	8.52	1.53	1.39
3	E	995	C2F	C14-C13	8.57	1.54	1.38
3	A	995	C2F	C13-C12	8.60	1.54	1.39
3	E	995	C2F	C14-C15	8.84	1.53	1.39
3	E	995	C2F	C17-C12	8.95	1.54	1.39
3	E	995	C2F	C13-C12	9.11	1.54	1.39

Continued on next page...

Continued from previous page...

Mol	Chain	Res	Type	Atoms	Z	Observed(Å)	Ideal(Å)
3	A	995	C2F	C16-C15	9.44	1.54	1.39
2	E	395	FAD	C2A-N3A	9.58	1.49	1.32
3	E	995	C2F	C16-C15	9.78	1.55	1.39

All (61) bond angle outliers are listed below:

Mol	Chain	Res	Type	Atoms	Z	Observed(°)	Ideal(°)
2	E	395	FAD	N3A-C2A-N1A	-15.69	116.88	128.89
2	A	395	FAD	N3A-C2A-N1A	-11.74	119.90	128.89
2	C	395	FAD	N3A-C2A-N1A	-11.49	120.10	128.89
2	A	395	FAD	C4X-C4-N3	-5.07	116.65	123.59
2	C	395	FAD	C4X-C4-N3	-4.56	117.35	123.59
2	E	395	FAD	C4X-C4-N3	-4.11	117.96	123.59
3	A	995	C2F	N3-C2-N1	-3.86	119.21	125.53
2	C	395	FAD	C1B-N9A-C4A	-3.64	121.44	126.94
2	A	395	FAD	O4B-C1B-N9A	-3.63	100.49	108.10
2	E	395	FAD	C7-C6-C5X	-3.47	115.25	120.92
3	E	995	C2F	N3-C2-N1	-3.45	119.87	125.53
2	E	395	FAD	C6-C5X-N5	-3.36	114.64	118.96
2	A	395	FAD	C7-C6-C5X	-2.95	116.10	120.92
2	E	395	FAD	O4B-C1B-N9A	-2.92	101.99	108.10
3	E	995	C2F	C4A-C4-N3	-2.64	119.40	123.46
3	A	995	C2F	C6-C9-N10	-2.55	105.05	111.54
2	C	395	FAD	C6-C5X-N5	-2.51	115.74	118.96
2	C	395	FAD	C7-C6-C5X	-2.48	116.88	120.92
2	A	395	FAD	C6-C5X-N5	-2.44	115.82	118.96
3	E	995	C2F	C9-C6-N5	-2.41	105.86	110.90
2	C	395	FAD	C4X-C10-N10	-2.39	119.11	120.52
2	E	395	FAD	C7M-C7-C6	-2.39	113.77	120.28
2	E	395	FAD	O4'-C4'-C5'	-2.37	105.02	110.19
2	C	395	FAD	C1'-C2'-C3'	-2.34	103.13	109.82
3	E	995	C2F	C6-C9-N10	-2.29	105.72	111.54
2	E	395	FAD	C4-C4X-N5	-2.24	116.00	118.72
3	A	995	C2F	C9-C6-N5	-2.09	106.53	110.90
4	C	5320	MRY	OAF-CAE-CAC	-2.06	105.59	109.79
2	A	395	FAD	O3'-C3'-C4'	2.11	114.06	108.75
2	A	395	FAD	C4X-C10-N10	2.11	121.76	120.52
2	E	395	FAD	C4-C4X-C10	2.13	121.31	119.94
3	E	995	C2F	C2-N1-C8A	2.13	119.34	114.54
2	E	395	FAD	C2B-C3B-C4B	2.18	107.09	102.61
3	A	995	C2F	C17-C12-C13	2.18	121.84	118.60
2	A	395	FAD	N6A-C6A-N1A	2.19	123.90	119.20

Continued on next page...

Continued from previous page...

Mol	Chain	Res	Type	Atoms	Z	Observed(°)	Ideal(°)
3	E	995	C2F	NA2-C2-N3	2.24	120.91	117.20
3	A	995	C2F	C16-C15-C14	2.26	122.20	119.06
3	A	995	C2F	NA2-C2-N1	2.29	120.99	117.20
2	A	395	FAD	O2'-C2'-C3'	2.40	115.05	109.02
2	E	395	FAD	C6-C5X-C9A	2.46	122.22	118.98
2	A	395	FAD	C2A-N1A-C6A	2.56	123.34	118.77
3	A	995	C2F	C2-N1-C8A	2.62	120.44	114.54
2	E	395	FAD	C2A-N1A-C6A	2.70	123.59	118.77
2	A	395	FAD	C6-C5X-C9A	3.07	123.02	118.98
2	E	395	FAD	C4X-C10-N10	3.08	122.33	120.52
3	A	995	C2F	C4-N3-C2	3.15	120.31	115.94
2	C	395	FAD	O3'-C3'-C2'	3.40	117.32	108.75
2	E	395	FAD	C1'-N10-C9A	3.47	122.75	118.86
3	E	995	C2F	C4-N3-C2	3.47	120.76	115.94
2	C	395	FAD	C6-C5X-C9A	3.57	123.68	118.98
2	C	395	FAD	O2'-C2'-C3'	4.17	119.49	109.02
2	E	395	FAD	C5X-C9A-N10	4.28	120.88	117.62
2	A	395	FAD	C1'-N10-C9A	4.68	124.12	118.86
2	E	395	FAD	C4-N3-C2	5.16	119.71	115.25
2	E	395	FAD	O3P-PA-O5B	5.75	118.18	102.94
3	A	995	C2F	C4-C4A-C8A	5.98	119.19	114.43
2	A	395	FAD	C5X-C9A-N10	5.99	122.17	117.62
2	C	395	FAD	C5X-C9A-N10	6.19	122.32	117.62
3	E	995	C2F	C4-C4A-C8A	6.56	119.65	114.43
2	C	395	FAD	C4-N3-C2	8.60	122.68	115.25
2	A	395	FAD	C4-N3-C2	9.00	123.03	115.25

There are no chirality outliers.

There are no torsion outliers.

There are no ring outliers.

4 monomers are involved in 6 short contacts:

Mol	Chain	Res	Type	Clashes	Symm-Clashes
3	A	995	C2F	1	0
2	C	395	FAD	2	0
2	E	395	FAD	2	0
3	E	995	C2F	1	0

5.7 Other polymers ⓘ

There are no such residues in this entry.

5.8 Polymer linkage issues ⓘ

There are no chain breaks in this entry.

6 Fit of model and data ⓘ

6.1 Protein, DNA and RNA chains ⓘ

In the following table, the column labelled ‘#RSRZ> 2’ contains the number (and percentage) of RSRZ outliers, followed by percent RSRZ outliers for the chain as percentile scores relative to all X-ray entries and entries of similar resolution. The OWAB column contains the minimum, median, 95th percentile and maximum values of the occupancy-weighted average B-factor per residue. The column labelled ‘Q< 0.9’ lists the number of (and percentage) of residues with an average occupancy less than 0.9.

Mol	Chain	Analysed	<RSRZ>	#RSRZ>2	OWAB(Å ²)	Q<0.9
1	A	285/304 (93%)	-0.03	7 (2%) 61 65	14, 24, 43, 60	0
1	C	266/304 (87%)	-0.18	1 (0%) 93 94	14, 21, 37, 60	0
1	E	278/304 (91%)	1.04	53 (19%) 2 1	18, 40, 113, 245	0
All	All	829/912 (90%)	0.28	61 (7%) 17 19	14, 26, 67, 245	0

All (61) RSRZ outliers are listed below:

Mol	Chain	Res	Type	RSRZ
1	E	145	PHE	6.0
1	E	102	ILE	5.8
1	E	92	ILE	5.8
1	E	3	PHE	5.3
1	A	63	ASN	5.2
1	E	136	VAL	5.0
1	E	121	LEU	4.8
1	E	111	ILE	4.8
1	E	106	TYR	4.6
1	E	91	CYS	4.4
1	A	62	ALA	4.3
1	E	94	ALA	4.1
1	E	109	ASN	3.8
1	E	107	TRP	3.8
1	E	99	LEU	3.6
1	E	138	LEU	3.5
1	E	162	ALA	3.4
1	E	166	LEU	3.3
1	E	19	VAL	3.3
1	E	103	ALA	3.3
1	E	110	GLY	3.2
1	E	114	ILE	3.2
1	A	92	ILE	3.2

Continued on next page...

Continued from previous page...

Mol	Chain	Res	Type	RSRZ
1	E	130	MET	3.2
1	E	140	LYS	3.2
1	E	108	ASN	3.1
1	E	137	THR	3.0
1	E	21	GLY	2.9
1	E	122	PRO	2.9
1	E	105	ASP	2.9
1	C	121	LEU	2.9
1	E	169	LEU	2.9
1	E	143	ALA	2.9
1	E	83	LEU	2.7
1	E	142	VAL	2.7
1	E	131	TYR	2.7
1	E	104	ARG	2.7
1	E	159	ALA	2.7
1	E	82	GLY	2.6
1	E	120	ASP	2.6
1	A	107	TRP	2.4
1	E	167	LEU	2.4
1	E	147	ILE	2.3
1	E	85	ALA	2.3
1	A	120	ASP	2.3
1	E	135	LEU	2.3
1	E	198	CYS	2.3
1	E	71	HIS	2.2
1	E	204	ASP	2.2
1	E	139	LEU	2.2
1	E	75	LYS	2.2
1	E	46	ASP	2.2
1	E	79	ASP	2.2
1	A	21	GLY	2.1
1	E	161	SER	2.1
1	E	70	THR	2.1
1	E	263	ILE	2.1
1	E	77	ILE	2.1
1	E	73	ILE	2.1
1	A	3	PHE	2.0
1	E	81	THR	2.0

6.2 Non-standard residues in protein, DNA, RNA chains ⓘ

There are no non-standard protein/DNA/RNA residues in this entry.

6.3 Carbohydrates [i](#)

There are no carbohydrates in this entry.

6.4 Ligands [i](#)

In the following table, the Atoms column lists the number of modelled atoms in the group and the number defined in the chemical component dictionary. LLDF column lists the quality of electron density of the group with respect to its neighbouring residues in protein, DNA or RNA chains. The B-factors column lists the minimum, median, 95th percentile and maximum values of B factors of atoms in the group. The column labelled 'Q< 0.9' lists the number of atoms with occupancy less than 0.9.

Mol	Type	Chain	Res	Atoms	RSCC	RSR	LLDF	B-factors(\AA^2)	Q<0.9
5	SO4	E	305	5/5	0.85	0.16	4.77	48,50,62,66	0
3	C2F	E	995	33/33	0.84	0.17	1.02	32,38,60,63	0
4	MRY	C	5320	8/8	0.92	0.08	0.91	20,26,28,29	0
3	C2F	A	995	33/33	0.91	0.11	0.49	21,25,52,55	0
2	FAD	E	395	53/53	0.86	0.14	-0.21	23,35,58,90	0
2	FAD	C	395	53/53	0.97	0.08	-0.25	12,19,36,39	0
2	FAD	A	395	53/53	0.96	0.08	-0.35	13,19,37,44	0

6.5 Other polymers [i](#)

There are no such residues in this entry.