



wwPDB X-ray Structure Validation Summary Report ⓘ

Feb 1, 2016 – 04:43 PM GMT

PDB ID : 4FTE
Title : Crystal structure of the D75N mutant capsid of Flock House virus
Authors : Speir, J.A.; Chen, Z.; Reddy, V.S.; Johnson, J.E.
Deposited on : 2012-06-27
Resolution : 3.50 Å(reported)

This is a wwPDB X-ray Structure Validation Summary Report for a publicly released PDB entry.
We welcome your comments at validation@mail.wwpdb.org
A user guide is available at
<http://wwpdb.org/validation/2016/XrayValidationReportHelp>
with specific help available everywhere you see the ⓘ symbol.

The following versions of software and data (see [references ⓘ](#)) were used in the production of this report:

MolProbity : 4.02b-467
Mogul : 1.7 (RC4), CSD as536be (2015)
Xtriage (Phenix) : 1.9-1692
EDS : rb-20026688
Percentile statistics : 20151230.v01 (using entries in the PDB archive December 30th 2015)
Refmac : 5.8.0135
CCP4 : 6.5.0
Ideal geometry (proteins) : Engh & Huber (2001)
Ideal geometry (DNA, RNA) : Parkinson et al. (1996)
Validation Pipeline (wwPDB-VP) : trunk26865

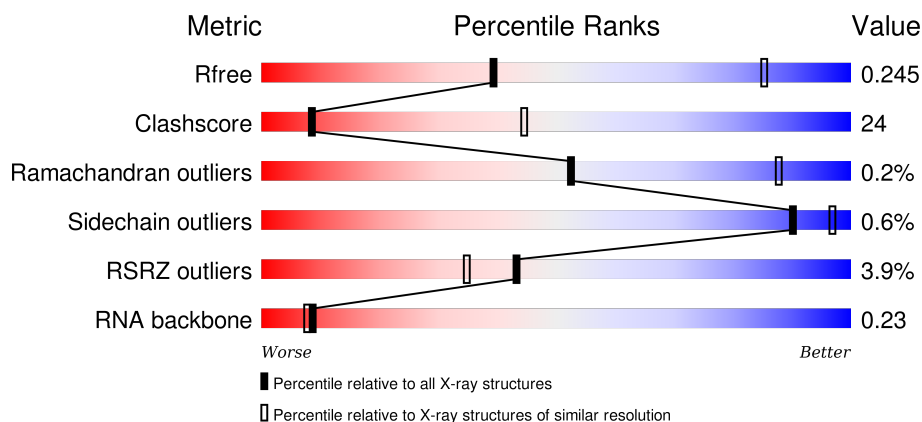
1 Overall quality at a glance

The following experimental techniques were used to determine the structure:

X-RAY DIFFRACTION

The reported resolution of this entry is 3.50 Å.

Percentile scores (ranging between 0-100) for global validation metrics of the entry are shown in the following graphic. The table shows the number of entries on which the scores are based.



Metric	Whole archive (#Entries)	Similar resolution (#Entries, resolution range(Å))
R_{free}	91344	1051 (3.60-3.40)
Clashscore	102246	1157 (3.60-3.40)
Ramachandran outliers	100387	1120 (3.60-3.40)
Sidechain outliers	100360	1121 (3.60-3.40)
RSRZ outliers	91569	1058 (3.60-3.40)
RNA backbone	2183	1050 (4.20-2.80)

The table below summarises the geometric issues observed across the polymeric chains and their fit to the electron density. The red, orange, yellow and green segments on the lower bar indicate the fraction of residues that contain outliers for ≥ 3 , 2, 1 and 0 types of geometric quality criteria. A grey segment represents the fraction of residues that are not modelled. The numeric value for each fraction is indicated below the corresponding segment, with a dot representing fractions $\leq 5\%$. The upper red bar (where present) indicates the fraction of residues that have poor fit to the electron density. The numeric value is given above the bar.

Mol	Chain	Length	Quality of chain
1	A	407	
1	B	407	
1	C	407	
2	R	15	

The following table lists non-polymeric compounds, carbohydrate monomers and non-standard residues in protein, DNA, RNA chains that are outliers for geometric or electron-density-fit criteria:

Mol	Type	Chain	Res	Chirality	Geometry	Clashes	Electron density
4	SO4	A	503	-	-	-	X
5	EPE	A	504	-	-	-	X
5	EPE	B	503	-	-	-	X

2 Entry composition

There are 7 unique types of molecules in this entry. The entry contains 7996 atoms, of which 0 are hydrogens and 0 are deuteriums.

In the tables below, the ZeroOcc column contains the number of atoms modelled with zero occupancy, the AltConf column contains the number of residues with at least one atom in alternate conformation and the Trace column contains the number of residues modelled with at most 2 atoms.

- Molecule 1 is a protein called Capsid protein alpha.

Mol	Chain	Residues	Atoms					ZeroOcc	AltConf	Trace
1	A	328	Total	C	N	O	S	0	0	0
			2456	1563	406	476	11			
1	B	330	Total	C	N	O	S	0	0	0
			2466	1570	407	477	12			
1	C	329	Total	C	N	O	S	0	0	0
			2461	1566	407	477	11			

There are 3 discrepancies between the modelled and reference sequences:

Chain	Residue	Modelled	Actual	Comment	Reference
A	75	ASN	ASP	engineered mutation	UNP P12870
B	75	ASN	ASP	engineered mutation	UNP P12870
C	75	ASN	ASP	engineered mutation	UNP P12870

- Molecule 2 is a RNA chain called Random cellular RNAs.

Mol	Chain	Residues	Atoms					ZeroOcc	AltConf	Trace
2	R	15	Total	C	N	O	P	0	0	0
			302	136	36	115	15			

- Molecule 3 is CALCIUM ION (three-letter code: CA) (formula: Ca).

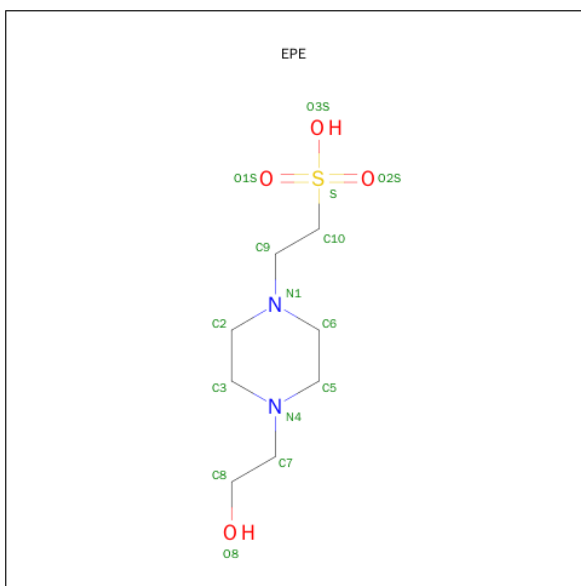
Mol	Chain	Residues	Atoms		ZeroOcc	AltConf
3	B	1	Total	Ca	0	0
			1	1		
3	A	2	Total	Ca	0	0
			2	2		
3	C	1	Total	Ca	0	0
			1	1		

- Molecule 4 is SULFATE ION (three-letter code: SO4) (formula: O₄S).



Mol	Chain	Residues	Atoms			ZeroOcc	AltConf
4	A	1	Total	O	S	0	0
			5	4	1		

- Molecule 5 is 4-(2-HYDROXYETHYL)-1-PIPERAZINE ETHANESULFONIC ACID (three-letter code: EPE) (formula: $C_8H_{18}N_2O_4S$).



Mol	Chain	Residues	Atoms					ZeroOcc	AltConf
5	A	1	Total	C	N	O	S	0	0
			15	8	2	4	1		
5	B	1	Total	C	N	O	S	0	0
			15	8	2	4	1		

Continued on next page...

Continued from previous page...

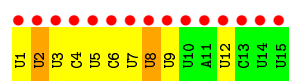
Mol	Chain	Residues	Atoms					ZeroOcc	AltConf
5	C	1	Total	C	N	O	S	0	0
			15	8	2	4	1		

- Molecule 6 is CHLORIDE ION (three-letter code: CL) (formula: Cl).

Mol	Chain	Residues	Atoms		ZeroOcc	AltConf
6	B	1	Total	Cl	0	0
			1	1		

- Molecule 7 is water.

Mol	Chain	Residues	Atoms		ZeroOcc	AltConf
7	A	93	Total	O	0	0
			93	93		
7	B	90	Total	O	0	0
			90	90		
7	C	70	Total	O	0	0
			70	70		
7	R	3	Total	O	0	0
			3	3		



4 Data and refinement statistics

Property	Value	Source
Space group	H 3	Depositor
Cell constants a, b, c, α , β , γ	325.60Å 325.60Å 770.66Å 90.00° 90.00° 120.00°	Depositor
Resolution (Å)	40.00 – 3.50 49.00 – 3.50	Depositor EDS
% Data completeness (in resolution range)	94.8 (40.00-3.50) 94.8 (49.00-3.50)	Depositor EDS
R_{merge}	0.17	Depositor
R_{sym}	(Not available)	Depositor
$\langle I/\sigma(I) \rangle$ ¹	1.89 (at 3.48Å)	Xtriage
Refinement program	CNS	Depositor
R, R_{free}	0.239 , (Not available) 0.244 , 0.245	Depositor DCC
R_{free} test set	18157 reflections (5.25%)	DCC
Wilson B-factor (Å ²)	67.0	Xtriage
Anisotropy	0.076	Xtriage
Bulk solvent k_{sol} (e/Å ³), B_{sol} (Å ²)	0.31 , 86.6	EDS
Estimated twinning fraction	0.000 for -h,1/3*h-1/3*k-1/3*l,-4/3*h-8/3*k+1/3*l 0.000 for -1/3*h+1/3*k+1/3*l,-k,8/3*h+4/3*k+1/3*l 0.000 for -2/3*h-1/3*k-1/3*l,-1/3*h-2/3*k+1/3*l,-4/3*h+4/3*k+1/3*l 0.000 for 1/3*h+2/3*k-1/3*l,-k,-8/3*h-4/3*k-1/3*l 0.000 for -1/3*h-2/3*k+1/3*l,-2/3*h-1/3*k-1/3*l,4/3*h-4/3*k-1/3*l 0.000 for -h,2/3*h+1/3*k+1/3*l,4/3*h+8/3*k-1/3*l 0.000 for h,-h-k,-l	Xtriage
L-test for twinning ²	$\langle L \rangle = 0.49$, $\langle L^2 \rangle = 0.31$	Xtriage
Outliers	0 of 363911 reflections	Xtriage
F_o, F_c correlation	0.87	EDS
Total number of atoms	7996	wwPDB-VP
Average B, all atoms (Å ²)	82.0	wwPDB-VP

Xtriage's analysis on translational NCS is as follows: *The largest off-origin peak in the Patterson function is 1.30% of the height of the origin peak. No significant pseudotranslation is detected.*

¹ Intensities estimated from amplitudes.

² Theoretical values of $\langle |L| \rangle$, $\langle L^2 \rangle$ for acentric reflections are 0.5, 0.375 respectively for untwinned datasets, and 0.333, 0.2 for perfectly twinned datasets.

5 Model quality

5.1 Standard geometry

Bond lengths and bond angles in the following residue types are not validated in this section: CA, EPE, SO4, CL

The Z score for a bond length (or angle) is the number of standard deviations the observed value is removed from the expected value. A bond length (or angle) with $|Z| > 5$ is considered an outlier worth inspection. RMSZ is the root-mean-square of all Z scores of the bond lengths (or angles).

Mol	Chain	Bond lengths		Bond angles	
		RMSZ	# Z >5	RMSZ	# Z >5
1	A	0.48	0/2520	0.69	0/3446
1	B	0.46	0/2530	0.68	0/3459
1	C	0.47	0/2525	0.70	0/3453
2	R	0.32	0/332	0.73	0/511
All	All	0.46	0/7907	0.69	0/10869

Chiral center outliers are detected by calculating the chiral volume of a chiral center and verifying if the center is modelled as a planar moiety or with the opposite hand. A planarity outlier is detected by checking planarity of atoms in a peptide group, atoms in a mainchain group or atoms of a sidechain that are expected to be planar.

Mol	Chain	#Chirality outliers	#Planarity outliers
1	A	0	4

There are no bond length outliers.

There are no bond angle outliers.

There are no chirality outliers.

All (4) planarity outliers are listed below:

Mol	Chain	Res	Type	Group
1	A	73	PRO	Peptide
1	A	74	PRO	Peptide
1	A	75	ASN	Peptide
1	A	86	ASP	Peptide

5.2 Too-close contacts ⓘ

In the following table, the Non-H and H(model) columns list the number of non-hydrogen atoms and hydrogen atoms in the chain respectively. The H(added) column lists the number of hydrogen atoms added and optimized by MolProbity. The Clashes column lists the number of clashes within the asymmetric unit, whereas Symm-Clashes lists symmetry related clashes.

Mol	Chain	Non-H	H(model)	H(added)	Clashes	Symm-Clashes
1	A	2456	0	2400	149	0
1	B	2466	0	2413	114	0
1	C	2461	0	2405	102	0
2	R	302	0	155	21	0
3	A	2	0	0	0	0
3	B	1	0	0	0	0
3	C	1	0	0	0	0
4	A	5	0	0	0	0
5	A	15	0	18	0	0
5	B	15	0	18	5	0
5	C	15	0	18	0	0
6	B	1	0	0	0	0
7	A	93	0	0	0	0
7	B	90	0	0	0	0
7	C	70	0	0	1	0
7	R	3	0	0	0	0
All	All	7996	0	7427	362	0

The all-atom clashscore is defined as the number of clashes found per 1000 atoms (including hydrogen atoms). The all-atom clashscore for this structure is 24.

The worst 5 of 362 close contacts within the same asymmetric unit are listed below, sorted by their clash magnitude.

Atom-1	Atom-2	Interatomic distance (Å)	Clash overlap (Å)
1:A:74:PRO:HB3	1:A:316:TRP:CZ2	1.21	1.66
1:A:74:PRO:CB	1:A:316:TRP:HZ2	1.17	1.53
1:C:76:PHE:CE1	1:C:78:THR:HB	1.48	1.47
1:A:74:PRO:CB	1:A:316:TRP:CZ2	1.95	1.34
1:B:74:PRO:CG	1:B:316:TRP:HE1	1.46	1.26

There are no symmetry-related clashes.

5.3 Torsion angles

5.3.1 Protein backbone

In the following table, the Percentiles column shows the percent Ramachandran outliers of the chain as a percentile score with respect to all X-ray entries followed by that with respect to entries of similar resolution.

The Analysed column shows the number of residues for which the backbone conformation was analysed, and the total number of residues.

Mol	Chain	Analysed	Favoured	Allowed	Outliers	Percentiles	
1	A	326/407 (80%)	312 (96%)	14 (4%)	0	100	100
1	B	328/407 (81%)	306 (93%)	21 (6%)	1 (0%)	46	84
1	C	327/407 (80%)	302 (92%)	24 (7%)	1 (0%)	46	84
All	All	981/1221 (80%)	920 (94%)	59 (6%)	2 (0%)	52	88

All (2) Ramachandran outliers are listed below:

Mol	Chain	Res	Type
1	C	264	PRO
1	B	239	VAL

5.3.2 Protein sidechains

In the following table, the Percentiles column shows the percent sidechain outliers of the chain as a percentile score with respect to all X-ray entries followed by that with respect to entries of similar resolution.

The Analysed column shows the number of residues for which the sidechain conformation was analysed, and the total number of residues.

Mol	Chain	Analysed	Rotameric	Outliers	Percentiles	
1	A	272/336 (81%)	270 (99%)	2 (1%)	88	96
1	B	272/336 (81%)	270 (99%)	2 (1%)	88	96
1	C	272/336 (81%)	271 (100%)	1 (0%)	93	98
All	All	816/1008 (81%)	811 (99%)	5 (1%)	90	97

All (5) residues with a non-rotameric sidechain are listed below:

Mol	Chain	Res	Type
1	A	86	ASP

Continued on next page...

Continued from previous page...

Mol	Chain	Res	Type
1	A	318	CYS
1	B	318	CYS
1	B	363	ASN
1	C	318	CYS

Some sidechains can be flipped to improve hydrogen bonding and reduce clashes. 5 of 19 such sidechains are listed below:

Mol	Chain	Res	Type
1	B	77	ASN
1	B	331	GLN
1	C	242	GLN
1	A	383	ASN
1	C	266	ASN

5.3.3 RNA ⓘ

Mol	Chain	Analysed	Backbone Outliers	Pucker Outliers
2	R	14/15 (93%)	5 (35%)	0

All (5) RNA backbone outliers are listed below:

Mol	Chain	Res	Type
2	R	2	U
2	R	4	C
2	R	5	U
2	R	8	U
2	R	12	U

There are no RNA pucker outliers to report.

5.4 Non-standard residues in protein, DNA, RNA chains ⓘ

There are no non-standard protein/DNA/RNA residues in this entry.

5.5 Carbohydrates ⓘ

There are no carbohydrates in this entry.

5.6 Ligand geometry

Of 9 ligands modelled in this entry, 5 are monoatomic - leaving 4 for Mogul analysis.

In the following table, the Counts columns list the number of bonds (or angles) for which Mogul statistics could be retrieved, the number of bonds (or angles) that are observed in the model and the number of bonds (or angles) that are defined in the chemical component dictionary. The Link column lists molecule types, if any, to which the group is linked. The Z score for a bond length (or angle) is the number of standard deviations the observed value is removed from the expected value. A bond length (or angle) with $|Z| > 2$ is considered an outlier worth inspection. RMSZ is the root-mean-square of all Z scores of the bond lengths (or angles).

Mol	Type	Chain	Res	Link	Bond lengths			Bond angles		
					Counts	RMSZ	# $ Z > 2$	Counts	RMSZ	# $ Z > 2$
4	SO4	A	503	-	4,4,4	0.27	0	6,6,6	0.10	0
5	EPE	A	504	-	14,15,15	1.17	1 (7%)	18,20,20	1.92	3 (16%)
5	EPE	B	503	-	14,15,15	1.08	1 (7%)	18,20,20	2.02	3 (16%)
5	EPE	C	502	-	14,15,15	1.14	1 (7%)	18,20,20	2.01	3 (16%)

In the following table, the Chirals column lists the number of chiral outliers, the number of chiral centers analysed, the number of these observed in the model and the number defined in the chemical component dictionary. Similar counts are reported in the Torsion and Rings columns. '-' means no outliers of that kind were identified.

Mol	Type	Chain	Res	Link	Chirals	Torsions	Rings
4	SO4	A	503	-	-	0/0/0/0	0/0/0/0
5	EPE	A	504	-	-	0/9/19/19	0/1/1/1
5	EPE	B	503	-	-	0/9/19/19	0/1/1/1
5	EPE	C	502	-	-	0/9/19/19	0/1/1/1

All (3) bond length outliers are listed below:

Mol	Chain	Res	Type	Atoms	Z	Observed(Å)	Ideal(Å)
5	B	503	EPE	O3S-S	2.04	1.51	1.46
5	A	504	EPE	O3S-S	2.10	1.51	1.46
5	C	502	EPE	O3S-S	2.32	1.52	1.46

The worst 5 of 9 bond angle outliers are listed below:

Mol	Chain	Res	Type	Atoms	Z	Observed(°)	Ideal(°)
5	A	504	EPE	O3S-S-O2S	-2.96	104.72	111.61
5	C	502	EPE	O3S-S-O2S	-2.92	104.82	111.61
5	B	503	EPE	O3S-S-O1S	-2.72	105.28	111.61
5	B	503	EPE	O3S-S-O2S	-2.38	106.07	111.61

Continued on next page...

Continued from previous page...

Mol	Chain	Res	Type	Atoms	Z	Observed(°)	Ideal(°)
5	A	504	EPE	O3S-S-O1S	-2.32	106.22	111.61

There are no chirality outliers.

There are no torsion outliers.

There are no ring outliers.

1 monomer is involved in 5 short contacts:

Mol	Chain	Res	Type	Clashes	Symm-Clashes
5	B	503	EPE	5	0

5.7 Other polymers [i](#)

There are no such residues in this entry.

5.8 Polymer linkage issues [i](#)

There are no chain breaks in this entry.

6 Fit of model and data [i](#)

6.1 Protein, DNA and RNA chains [i](#)

In the following table, the column labelled ‘#RSRZ> 2’ contains the number (and percentage) of RSRZ outliers, followed by percent RSRZ outliers for the chain as percentile scores relative to all X-ray entries and entries of similar resolution. The OWAB column contains the minimum, median, 95th percentile and maximum values of the occupancy-weighted average B-factor per residue. The column labelled ‘Q< 0.9’ lists the number of (and percentage) of residues with an average occupancy less than 0.9.

Mol	Chain	Analysed	<RSRZ>	#RSRZ>2	OWAB(Å ²)	Q<0.9
1	A	328/407 (80%)	-0.14	8 (2%) 62 52	42, 66, 151, 266	0
1	B	330/407 (81%)	-0.14	9 (2%) 58 47	43, 66, 153, 224	0
1	C	329/407 (80%)	-0.12	7 (2%) 67 58	40, 65, 124, 222	0
2	R	15/15 (100%)	4.38	15 (100%) 0 0	210, 278, 328, 345	0
All	All	1002/1236 (81%)	-0.06	39 (3%) 43 35	40, 66, 160, 345	0

The worst 5 of 39 RSRZ outliers are listed below:

Mol	Chain	Res	Type	RSRZ
1	A	382	SER	6.9
1	A	383	ASN	6.8
2	R	5	U	6.3
2	R	2	U	6.0
2	R	3	U	5.6

6.2 Non-standard residues in protein, DNA, RNA chains [i](#)

There are no non-standard protein/DNA/RNA residues in this entry.

6.3 Carbohydrates [i](#)

There are no carbohydrates in this entry.

6.4 Ligands [i](#)

In the following table, the Atoms column lists the number of modelled atoms in the group and the number defined in the chemical component dictionary. LLDF column lists the quality of electron density of the group with respect to its neighbouring residues in protein, DNA or RNA chains. The B-factors column lists the minimum, median, 95th percentile and maximum values of B factors

of atoms in the group. The column labelled 'Q< 0.9' lists the number of atoms with occupancy less than 0.9.

Mol	Type	Chain	Res	Atoms	RSCC	RSR	LLDF	B-factors(\AA^2)	Q<0.9
4	SO4	A	503	5/5	0.61	0.60	4.98	131,136,151,180	0
5	EPE	A	504	15/15	0.94	0.34	2.30	50,83,162,169	0
5	EPE	B	503	15/15	0.87	0.34	2.06	43,86,141,160	0
5	EPE	C	502	15/15	0.87	0.30	0.85	46,105,165,173	0
3	CA	B	501	1/1	0.87	0.21	-0.43	60,60,60,60	0
3	CA	A	502	1/1	0.84	0.26	-0.68	105,105,105,105	0
3	CA	C	501	1/1	0.84	0.18	-0.87	61,61,61,61	0
3	CA	A	501	1/1	0.79	0.09	-3.01	63,63,63,63	0
6	CL	B	502	1/1	0.11	0.36	-	75,75,75,75	0

6.5 Other polymers [i](#)

There are no such residues in this entry.