



# Full wwPDB X-ray Structure Validation Report ⓘ

Feb 1, 2016 – 04:43 PM GMT

PDB ID : 4FVY  
Title : Structure of rat nNOS heme domain in complex with N(omega)-hydroxy- N(omega)-methyl-L-arginine  
Authors : Li, H.; Poulos, T.L.  
Deposited on : 2012-06-29  
Resolution : 1.70 Å(reported)

This is a Full wwPDB X-ray Structure Validation Report for a publicly released PDB entry.  
We welcome your comments at [validation@mail.wwpdb.org](mailto:validation@mail.wwpdb.org)  
A user guide is available at  
<http://wwpdb.org/validation/2016/XrayValidationReportHelp>  
with specific help available everywhere you see the ⓘ symbol.

---

The following versions of software and data (see [references ⓘ](#)) were used in the production of this report:

MolProbity : 4.02b-467  
Mogul : 1.7 (RC4), CSD as536be (2015)  
Xtriage (Phenix) : 1.9-1692  
EDS : rb-20026688  
Percentile statistics : 20151230.v01 (using entries in the PDB archive December 30th 2015)  
Refmac : 5.8.0135  
CCP4 : 6.5.0  
Ideal geometry (proteins) : Engh & Huber (2001)  
Ideal geometry (DNA, RNA) : Parkinson et al. (1996)  
Validation Pipeline (wwPDB-VP) : trunk26865

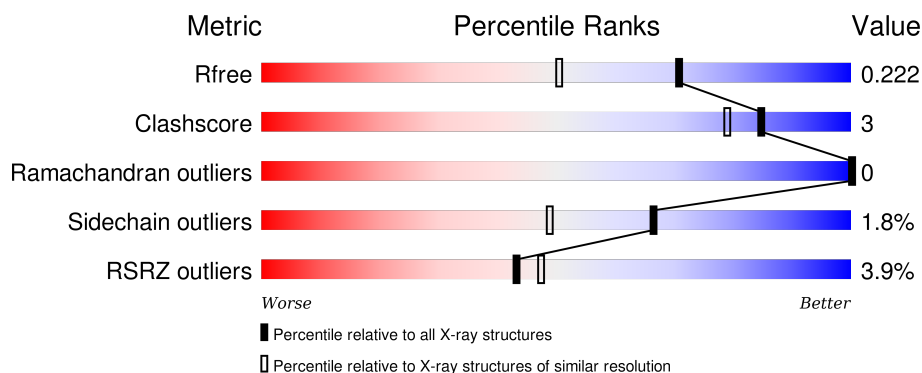
# 1 Overall quality at a glance

The following experimental techniques were used to determine the structure:

## *X-RAY DIFFRACTION*

The reported resolution of this entry is 1.70 Å.

Percentile scores (ranging between 0-100) for global validation metrics of the entry are shown in the following graphic. The table shows the number of entries on which the scores are based.



Metric	Whole archive (#Entries)	Similar resolution (#Entries, resolution range(Å))
$R_{free}$	91344	3190 (1.70-1.70)
Clashscore	102246	3585 (1.70-1.70)
Ramachandran outliers	100387	3527 (1.70-1.70)
Sidechain outliers	100360	3527 (1.70-1.70)
RSRZ outliers	91569	3200 (1.70-1.70)

The table below summarises the geometric issues observed across the polymeric chains and their fit to the electron density. The red, orange, yellow and green segments on the lower bar indicate the fraction of residues that contain outliers for  $\geq 3$ , 2, 1 and 0 types of geometric quality criteria. A grey segment represents the fraction of residues that are not modelled. The numeric value for each fraction is indicated below the corresponding segment, with a dot representing fractions  $\leq 5\%$ . The upper red bar (where present) indicates the fraction of residues that have poor fit to the electron density. The numeric value is given above the bar.

Mol	Chain	Length	Quality of chain
1	A	422	<div> <div>5%</div> <div>89%</div> <div>8%</div> <div>.</div> </div>
1	B	422	<div> <div>3%</div> <div>91%</div> <div>7%</div> <div>.</div> </div>

## 2 Entry composition [i](#)

There are 7 unique types of molecules in this entry. The entry contains 7254 atoms, of which 0 are hydrogens and 0 are deuteriums.

In the tables below, the ZeroOcc column contains the number of atoms modelled with zero occupancy, the AltConf column contains the number of residues with at least one atom in alternate conformation and the Trace column contains the number of residues modelled with at most 2 atoms.

- Molecule 1 is a protein called Nitric oxide synthase, brain.

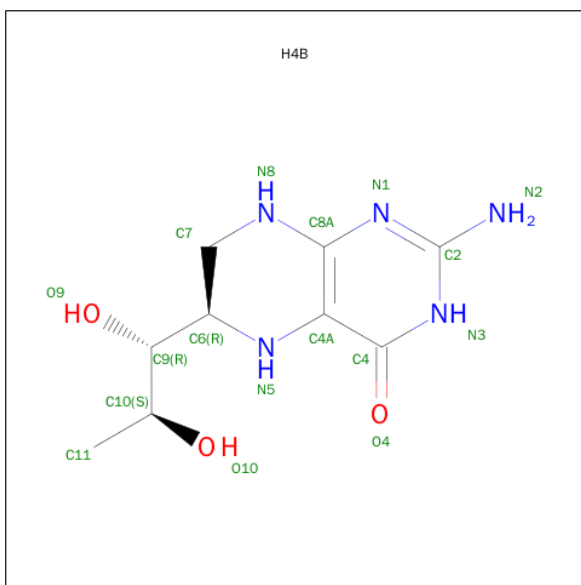
Mol	Chain	Residues	Atoms					ZeroOcc	AltConf	Trace
1	A	407	Total	C	N	O	S	0	3	0
			3324	2128	567	606	23			
1	B	411	Total	C	N	O	S	0	3	0
			3354	2146	574	612	22			

- Molecule 2 is PROTOPORPHYRIN IX CONTAINING FE (three-letter code: HEM) (formula:  $C_{34}H_{32}FeN_4O_4$ ).



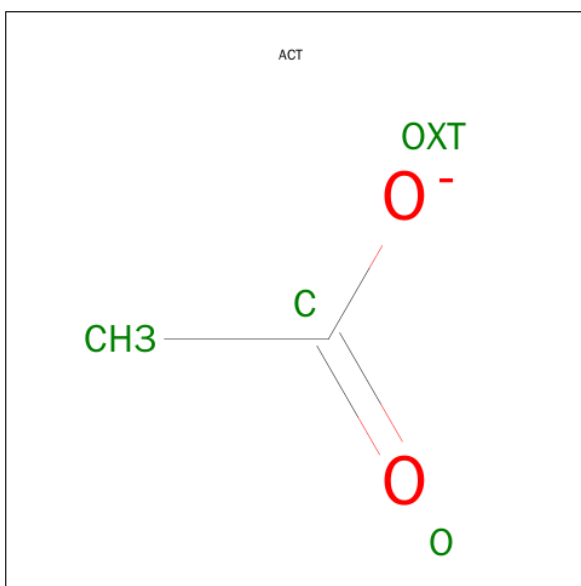
Mol	Chain	Residues	Atoms					ZeroOcc	AltConf
2	A	1	Total	C	Fe	N	O	0	0
			43	34	1	4	4		
2	B	1	Total	C	Fe	N	O	0	0
			43	34	1	4	4		

- Molecule 3 is 5,6,7,8-TETRAHYDROBIOPTERIN (three-letter code: H4B) (formula:  $C_9H_{15}N_5O_3$ ).



Mol	Chain	Residues	Atoms				ZeroOcc	AltConf
3	A	1	Total 17	C 9	N 5	O 3	0	0
3	B	1	Total 17	C 9	N 5	O 3	0	0

- Molecule 4 is ACETATE ION (three-letter code: ACT) (formula:  $\text{C}_2\text{H}_3\text{O}_2$ ).



Mol	Chain	Residues	Atoms	ZeroOcc	AltConf
4	A	1	Total C O 4 2 2	0	0
4	B	1	Total C O 4 2 2	0	0

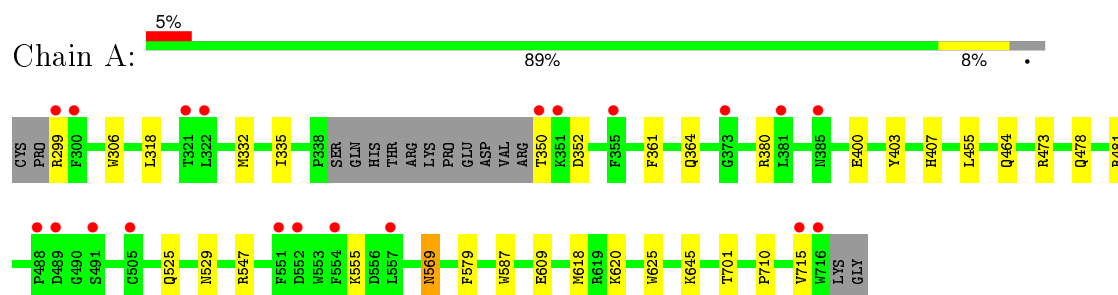
- 
- Chemical structure of 3KJ (3-((S)-2-amino-3-oxopropyl)-5-hydroxy-1-methyl-1H-imidazole-4-carboxamide) is shown. The structure includes a carboxylic acid group (OA1, HO, C, OA2, O), an amide group (N, NH2, CA(S), CB, CG, CD, NE, NH), and a hydroxyl group (OH, NH2, C1). The structure is labeled with atom names and numbers, including OA1, HO, C, OA2, O, N, NH2, CA(S), CB, CG, CD, NE, NH, H13, NH1, NH2, OH, and C1.

Mol	Chain	Residues	Atoms	ZeroOcc	AltConf
7	A	169	Total O 169 169	0	0
7	B	250	Total O 250 250	0	0

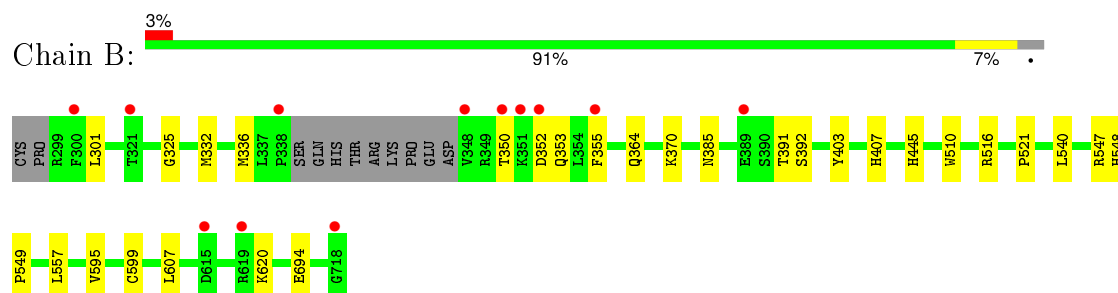
### 3 Residue-property plots [i](#)

These plots are drawn for all protein, RNA and DNA chains in the entry. The first graphic for a chain summarises the proportions of errors displayed in the second graphic. The second graphic shows the sequence view annotated by issues in geometry and electron density. Residues are color-coded according to the number of geometric quality criteria for which they contain at least one outlier: green = 0, yellow = 1, orange = 2 and red = 3 or more. A red dot above a residue indicates a poor fit to the electron density ( $RSRZ > 2$ ). Stretches of 2 or more consecutive residues without any outlier are shown as a green connector. Residues present in the sample, but not in the model, are shown in grey.

- Molecule 1: Nitric oxide synthase, brain



- Molecule 1: Nitric oxide synthase, brain



## 4 Data and refinement statistics

Property	Value	Source
Space group	P 21 21 21	Depositor
Cell constants a, b, c, $\alpha$ , $\beta$ , $\gamma$	51.89Å 110.94Å 164.47Å 90.00° 90.00° 90.00°	Depositor
Resolution (Å)	49.89 – 1.70 49.48 – 1.70	Depositor EDS
% Data completeness (in resolution range)	97.5 (49.89-1.70) 97.5 (49.48-1.70)	Depositor EDS
$R_{merge}$	0.06	Depositor
$R_{sym}$	0.06	Depositor
$\langle I/\sigma(I) \rangle$ <sup>1</sup>	2.48 (at 1.70Å)	Xtriage
Refinement program	REFMAC 5.5.0102	Depositor
R, $R_{free}$	0.184 , 0.212 0.196 , 0.222	Depositor DCC
$R_{free}$ test set	5124 reflections (5.26%)	DCC
Wilson B-factor (Å <sup>2</sup> )	23.3	Xtriage
Anisotropy	0.683	Xtriage
Bulk solvent $k_{sol}$ (e/Å <sup>3</sup> ), $B_{sol}$ (Å <sup>2</sup> )	0.38 , 40.5	EDS
Estimated twinning fraction	No twinning to report.	Xtriage
L-test for twinning <sup>2</sup>	$\langle  L  \rangle = 0.48$ , $\langle L^2 \rangle = 0.31$	Xtriage
Outliers	0 of 102598 reflections	Xtriage
$F_o, F_c$ correlation	0.96	EDS
Total number of atoms	7254	wwPDB-VP
Average B, all atoms (Å <sup>2</sup> )	36.0	wwPDB-VP

Xtriage's analysis on translational NCS is as follows: *The largest off-origin peak in the Patterson function is 3.97% of the height of the origin peak. No significant pseudotranslation is detected.*

<sup>1</sup>Intensities estimated from amplitudes.

<sup>2</sup>Theoretical values of  $\langle |L| \rangle$ ,  $\langle L^2 \rangle$  for acentric reflections are 0.5, 0.375 respectively for untwinned datasets, and 0.333, 0.2 for perfectly twinned datasets.

## 5 Model quality

### 5.1 Standard geometry

Bond lengths and bond angles in the following residue types are not validated in this section: HEM, ZN, 3KJ, H4B, ACT

The Z score for a bond length (or angle) is the number of standard deviations the observed value is removed from the expected value. A bond length (or angle) with  $|Z| > 5$  is considered an outlier worth inspection. RMSZ is the root-mean-square of all Z scores of the bond lengths (or angles).

Mol	Chain	Bond lengths		Bond angles	
		RMSZ	# Z  >5	RMSZ	# Z  >5
1	A	0.57	0/3426	0.61	0/4648
1	B	0.61	0/3456	0.65	0/4685
All	All	0.59	0/6882	0.63	0/9333

There are no bond length outliers.

There are no bond angle outliers.

There are no chirality outliers.

There are no planarity outliers.

### 5.2 Too-close contacts

In the following table, the Non-H and H(model) columns list the number of non-hydrogen atoms and hydrogen atoms in the chain respectively. The H(added) column lists the number of hydrogen atoms added and optimized by MolProbity. The Clashes column lists the number of clashes within the asymmetric unit, whereas Symm-Clashes lists symmetry related clashes.

Mol	Chain	Non-H	H(model)	H(added)	Clashes	Symm-Clashes
1	A	3324	0	3237	19	0
1	B	3354	0	3274	16	0
2	A	43	0	30	2	0
2	B	43	0	30	1	0
3	A	17	0	15	0	0
3	B	17	0	15	0	0
4	A	4	0	3	0	0
4	B	4	0	3	0	0
5	A	14	0	14	3	0
5	B	14	0	14	2	0
6	A	1	0	0	0	0

*Continued on next page...*



*Continued from previous page...*

Mol	Chain	Non-H	H(model)	H(added)	Clashes	Symm-Clashes
7	A	169	0	0	2	0
7	B	250	0	0	1	0
All	All	7254	0	6635	39	0

The all-atom clashscore is defined as the number of clashes found per 1000 atoms (including hydrogen atoms). The all-atom clashscore for this structure is 3.

All (39) close contacts within the same asymmetric unit are listed below, sorted by their clash magnitude.

Atom-1	Atom-2	Interatomic distance (Å)	Clash overlap (Å)
1:A:701:THR:HB	7:A:1053:HOH:O	1.78	0.82
5:A:804:3KJ:H17	5:A:804:3KJ:CD	2.28	0.63
1:A:609:GLU:HG3	7:A:955:HOH:O	2.01	0.61
1:A:478:GLN:HB2	1:A:481:ARG:HG3	1.83	0.61
1:A:380:ARG:HD3	1:A:400:GLU:OE1	2.05	0.56
5:B:804:3KJ:H17	5:B:804:3KJ:CD	2.35	0.56
5:B:804:3KJ:H17	5:B:804:3KJ:H10	1.90	0.53
1:A:455:LEU:HD12	1:A:587:TRP:HB3	1.91	0.53
1:B:350:THR:HG22	1:B:352:ASP:H	1.73	0.53
1:B:325:GLY:O	1:B:332:MET:HG3	2.09	0.52
1:B:391:THR:O	1:B:392:SER:HB2	2.10	0.51
1:A:525:GLN:HG3	1:A:529:ASN:O	2.11	0.51
2:A:801:HEM:HMC1	2:A:801:HEM:HBC2	1.93	0.50
5:A:804:3KJ:H17	5:A:804:3KJ:H10	1.93	0.49
2:B:801:HEM:HBB2	2:B:801:HEM:HHC	1.95	0.48
2:A:801:HEM:CMC	2:A:801:HEM:HBC2	2.43	0.48
1:A:299:ARG:HG3	1:A:318:LEU:HD21	1.95	0.48
5:A:804:3KJ:CD	5:A:804:3KJ:C1	2.93	0.47
1:A:569:ASN:HD22	1:A:569:ASN:H	1.63	0.46
1:A:299:ARG:HG3	1:A:318:LEU:CD2	2.46	0.45
1:B:403:TYR:CE1	1:B:407:HIS:CE1	3.04	0.45
1:B:516:ARG:NH2	1:B:557:LEU:O	2.50	0.45
1:B:355:PHE:CE1	1:B:385:ASN:HB2	2.52	0.45
1:A:464:GLN:HB3	1:A:579:PHE:CE2	2.52	0.44
1:B:510:TRP:CE2	1:B:521:PRO:HD3	2.52	0.44
1:A:332:MET:CE	1:B:301:LEU:HD22	2.48	0.43
1:B:595:VAL:O	1:B:599:CYS:HB2	2.19	0.43
1:A:361:PHE:O	1:A:364:GLN:HG2	2.18	0.43
1:A:306:TRP:CD2	1:B:336:MET:HE3	2.54	0.42
1:A:332:MET:HE3	1:B:301:LEU:HD22	2.02	0.42
1:A:473:ARG:NH2	1:A:710:PRO:HD3	2.34	0.42

*Continued on next page...*

*Continued from previous page...*

Atom-1	Atom-2	Interatomic distance (Å)	Clash overlap (Å)
1:A:403:TYR:CE1	1:A:407:HIS:CE1	3.07	0.42
1:B:364:GLN:NE2	7:B:1031:HOH:O	2.52	0.41
1:B:548:HIS:CG	1:B:549:PRO:HD2	2.55	0.41
1:B:445:HIS:C	1:B:445:HIS:CD2	2.93	0.41
1:A:335:ILE:HD13	1:B:694:GLU:HB3	2.02	0.40
1:A:618:MET:HG2	1:A:625:TRP:CD2	2.56	0.40
1:A:455:LEU:HD12	1:A:587:TRP:CB	2.51	0.40
1:B:607:LEU:HA	1:B:607:LEU:HD23	1.90	0.40

There are no symmetry-related clashes.

## 5.3 Torsion angles [i](#)

### 5.3.1 Protein backbone [i](#)

In the following table, the Percentiles column shows the percent Ramachandran outliers of the chain as a percentile score with respect to all X-ray entries followed by that with respect to entries of similar resolution.

The Analysed column shows the number of residues for which the backbone conformation was analysed, and the total number of residues.

Mol	Chain	Analysed	Favoured	Allowed	Outliers	Percentiles	
1	A	406/422 (96%)	401 (99%)	5 (1%)	0	100	100
1	B	410/422 (97%)	404 (98%)	6 (2%)	0	100	100
All	All	816/844 (97%)	805 (99%)	11 (1%)	0	100	100

There are no Ramachandran outliers to report.

### 5.3.2 Protein sidechains [i](#)

In the following table, the Percentiles column shows the percent sidechain outliers of the chain as a percentile score with respect to all X-ray entries followed by that with respect to entries of similar resolution.

The Analysed column shows the number of residues for which the sidechain conformation was analysed, and the total number of residues.

Mol	Chain	Analysed	Rotameric	Outliers	Percentiles	
1	A	366/377 (97%)	358 (98%)	8 (2%)	60	39

*Continued on next page...*

*Continued from previous page...*

Mol	Chain	Analysed	Rotameric	Outliers	Percentiles	
1	B	369/377 (98%)	364 (99%)	5 (1%)	74	59
All	All	735/754 (98%)	722 (98%)	13 (2%)	66	49

All (13) residues with a non-rotameric sidechain are listed below:

Mol	Chain	Res	Type
1	A	350	THR
1	A	352	ASP
1	A	547	ARG
1	A	555	LYS
1	A	569	ASN
1	A	620	LYS
1	A	645	LYS
1	A	715	VAL
1	B	353	GLN
1	B	370	LYS
1	B	540	LEU
1	B	547	ARG
1	B	620	LYS

Some sidechains can be flipped to improve hydrogen bonding and reduce clashes. All (12) such sidechains are listed below:

Mol	Chain	Res	Type
1	A	436	HIS
1	A	454	ASN
1	A	527	ASN
1	A	569	ASN
1	A	605	ASN
1	A	697	ASN
1	B	364	GLN
1	B	454	ASN
1	B	507	GLN
1	B	601	ASN
1	B	605	ASN
1	B	697	ASN

### 5.3.3 RNA ⓘ

There are no RNA molecules in this entry.

## 5.4 Non-standard residues in protein, DNA, RNA chains [i](#)

There are no non-standard protein/DNA/RNA residues in this entry.

## 5.5 Carbohydrates [i](#)

There are no carbohydrates in this entry.

## 5.6 Ligand geometry [i](#)

Of 9 ligands modelled in this entry, 1 is monoatomic - leaving 8 for Mogul analysis.

In the following table, the Counts columns list the number of bonds (or angles) for which Mogul statistics could be retrieved, the number of bonds (or angles) that are observed in the model and the number of bonds (or angles) that are defined in the chemical component dictionary. The Link column lists molecule types, if any, to which the group is linked. The Z score for a bond length (or angle) is the number of standard deviations the observed value is removed from the expected value. A bond length (or angle) with  $|Z| > 2$  is considered an outlier worth inspection. RMSZ is the root-mean-square of all Z scores of the bond lengths (or angles).

Mol	Type	Chain	Res	Link	Bond lengths			Bond angles		
					Counts	RMSZ	# $ Z  > 2$	Counts	RMSZ	# $ Z  > 2$
2	HEM	A	801	1	30,50,50	2.29	8 (26%)	24,82,82	2.61	11 (45%)
3	H4B	A	802	-	13,18,18	0.95	1 (7%)	11,26,26	2.89	6 (54%)
4	ACT	A	803	-	1,3,3	1.44	0	0,3,3	0.00	-
5	3KJ	A	804	-	8,13,13	0.74	0	4,16,16	1.24	0
2	HEM	B	801	1	30,50,50	2.08	6 (20%)	24,82,82	2.52	10 (41%)
3	H4B	B	802	-	13,18,18	1.31	2 (15%)	11,26,26	2.80	5 (45%)
4	ACT	B	803	-	1,3,3	1.14	0	0,3,3	0.00	-
5	3KJ	B	804	-	8,13,13	0.73	0	4,16,16	1.16	0

In the following table, the Chirals column lists the number of chiral outliers, the number of chiral centers analysed, the number of these observed in the model and the number defined in the chemical component dictionary. Similar counts are reported in the Torsion and Rings columns. '-' means no outliers of that kind were identified.

Mol	Type	Chain	Res	Link	Chirals	Torsions	Rings
2	HEM	A	801	1	-	0/10/54/54	0/0/8/8
3	H4B	A	802	-	-	0/8/17/17	0/2/2/2
4	ACT	A	803	-	-	0/0/0/0	0/0/0/0
5	3KJ	A	804	-	-	0/7/15/15	0/0/0/0
2	HEM	B	801	1	-	0/10/54/54	0/0/8/8
3	H4B	B	802	-	-	0/8/17/17	0/2/2/2

*Continued on next page...*

*Continued from previous page...*

Mol	Type	Chain	Res	Link	Chirals	Torsions	Rings
4	ACT	B	803	-	-	0/0/0/0	0/0/0/0
5	3KJ	B	804	-	-	0/7/15/15	0/0/0/0

All (17) bond length outliers are listed below:

Mol	Chain	Res	Type	Atoms	Z	Observed(Å)	Ideal(Å)
2	A	801	HEM	C3B-C4B	-7.63	1.45	1.51
2	B	801	HEM	C3B-C4B	-5.77	1.46	1.51
2	B	801	HEM	C3D-C4D	-5.76	1.44	1.51
2	A	801	HEM	C3D-C4D	-5.34	1.44	1.51
2	B	801	HEM	C2C-C1C	-3.93	1.45	1.52
2	A	801	HEM	C2C-C1C	-3.90	1.45	1.52
2	B	801	HEM	C2D-C1D	-2.53	1.43	1.51
2	A	801	HEM	C2B-C1B	-2.53	1.43	1.51
2	B	801	HEM	C2B-C1B	-2.52	1.43	1.51
2	A	801	HEM	C2D-C1D	-2.15	1.44	1.51
2	A	801	HEM	C3C-CAC	2.09	1.55	1.51
2	A	801	HEM	C1C-NC	2.15	1.38	1.36
3	A	802	H4B	C2-N2	2.18	1.38	1.34
3	B	802	H4B	C7-N8	2.39	1.49	1.46
3	B	802	H4B	O4-C4	2.68	1.31	1.24
2	B	801	HEM	FE-NC	2.80	2.06	1.95
2	A	801	HEM	FE-NC	3.35	2.09	1.95

All (32) bond angle outliers are listed below:

Mol	Chain	Res	Type	Atoms	Z	Observed(°)	Ideal(°)
2	B	801	HEM	CBA-CAA-C2A	-4.29	104.84	112.53
3	B	802	H4B	N3-C2-N1	-3.85	119.22	125.53
2	A	801	HEM	CAA-C2A-C1A	-3.77	122.92	127.01
3	A	802	H4B	N3-C2-N1	-3.60	119.63	125.53
2	A	801	HEM	CBD-CAD-C3D	-3.36	103.77	113.55
2	A	801	HEM	C3C-CAC-CBC	-2.94	119.94	124.46
2	A	801	HEM	CBA-CAA-C2A	-2.80	107.52	112.53
2	B	801	HEM	CBD-CAD-C3D	-2.68	105.76	113.55
2	A	801	HEM	CMA-C3A-C4A	-2.53	124.19	128.36
2	B	801	HEM	C3B-C4B-NB	-2.11	107.60	111.63
2	B	801	HEM	C2C-C1C-CHC	2.02	126.75	123.68
2	B	801	HEM	C3B-C4B-CHC	2.22	126.29	123.16
3	B	802	H4B	N2-C2-N1	2.33	121.06	117.20
3	A	802	H4B	N2-C2-N3	2.48	121.31	117.20
2	B	801	HEM	CMD-C2D-C3D	2.57	125.71	114.35

*Continued on next page...*

*Continued from previous page...*

Mol	Chain	Res	Type	Atoms	Z	Observed(°)	Ideal(°)
2	A	801	HEM	C3B-C4B-CHC	2.61	126.84	123.16
3	B	802	H4B	C2-N1-C8A	2.67	120.54	114.54
3	A	802	H4B	C4-N3-C2	2.90	119.97	115.94
2	A	801	HEM	CMD-C2D-C3D	3.02	127.71	114.35
3	A	802	H4B	C2-N1-C8A	3.64	122.72	114.54
3	A	802	H4B	C4A-C8A-N8	4.09	123.24	118.43
2	A	801	HEM	CAD-C3D-C2D	4.11	125.03	113.22
2	B	801	HEM	CMB-C2B-C3B	4.21	127.05	116.53
2	A	801	HEM	CMB-C2B-C3B	4.37	127.43	116.53
2	B	801	HEM	CAD-C3D-C2D	4.48	126.11	113.22
3	B	802	H4B	C4-N3-C2	4.57	122.28	115.94
2	B	801	HEM	CMC-C2C-C3C	4.74	128.36	116.53
2	A	801	HEM	CAD-C3D-C4D	5.03	130.22	112.47
2	B	801	HEM	CAD-C3D-C4D	5.06	130.33	112.47
2	A	801	HEM	CMC-C2C-C3C	5.16	129.41	116.53
3	A	802	H4B	C4-C4A-C8A	5.54	119.58	114.56
3	B	802	H4B	C4-C4A-C8A	5.61	119.64	114.56

There are no chirality outliers.

There are no torsion outliers.

There are no ring outliers.

4 monomers are involved in 8 short contacts:

Mol	Chain	Res	Type	Clashes	Symm-Clashes
2	A	801	HEM	2	0
5	A	804	3KJ	3	0
2	B	801	HEM	1	0
5	B	804	3KJ	2	0

## 5.7 Other polymers ⓘ

There are no such residues in this entry.

## 5.8 Polymer linkage issues ⓘ

There are no chain breaks in this entry.

## 6 Fit of model and data ⓘ

### 6.1 Protein, DNA and RNA chains ⓘ

In the following table, the column labelled ‘#RSRZ> 2’ contains the number (and percentage) of RSRZ outliers, followed by percent RSRZ outliers for the chain as percentile scores relative to all X-ray entries and entries of similar resolution. The OWAB column contains the minimum, median, 95<sup>th</sup> percentile and maximum values of the occupancy-weighted average B-factor per residue. The column labelled ‘Q< 0.9’ lists the number of (and percentage) of residues with an average occupancy less than 0.9.

Mol	Chain	Analysed	<RSRZ>	#RSRZ>2	OWAB(Å <sup>2</sup> )	Q<0.9
1	A	407/422 (96%)	0.36	20 (4%) 33 36	19, 39, 72, 94	0
1	B	411/422 (97%)	0.17	12 (2%) 55 59	17, 30, 52, 67	0
All	All	818/844 (96%)	0.26	32 (3%) 43 47	17, 35, 66, 94	0

All (32) RSRZ outliers are listed below:

Mol	Chain	Res	Type	RSRZ
1	A	355	PHE	6.6
1	A	300	PHE	6.0
1	B	348	VAL	5.3
1	B	338	PRO	4.1
1	A	716	TRP	3.8
1	A	321	THR	3.6
1	A	322	LEU	3.4
1	A	299	ARG	3.4
1	A	381	LEU	3.3
1	B	718	GLY	3.1
1	B	321	THR	3.1
1	A	505[A]	CYS	3.1
1	B	352	ASP	3.0
1	A	373	GLY	3.0
1	A	488	PRO	3.0
1	A	350	THR	2.9
1	B	355	PHE	2.9
1	B	300	PHE	2.6
1	B	389	GLU	2.6
1	B	619	ARG	2.6
1	A	554	PHE	2.6
1	A	551	PHE	2.6
1	A	489	ASP	2.5
1	A	385	ASN	2.5

*Continued on next page...*

*Continued from previous page...*

Mol	Chain	Res	Type	RSRZ
1	A	351	LYS	2.4
1	A	557	LEU	2.2
1	A	552	ASP	2.2
1	A	715	VAL	2.2
1	A	491	SER	2.2
1	B	350	THR	2.2
1	B	615	ASP	2.0
1	B	351	LYS	2.0

## 6.2 Non-standard residues in protein, DNA, RNA chains [i](#)

There are no non-standard protein/DNA/RNA residues in this entry.

## 6.3 Carbohydrates [i](#)

There are no carbohydrates in this entry.

## 6.4 Ligands [i](#)

In the following table, the Atoms column lists the number of modelled atoms in the group and the number defined in the chemical component dictionary. LLDF column lists the quality of electron density of the group with respect to its neighbouring residues in protein, DNA or RNA chains. The B-factors column lists the minimum, median, 95<sup>th</sup> percentile and maximum values of B factors of atoms in the group. The column labelled 'Q< 0.9' lists the number of atoms with occupancy less than 0.9.

Mol	Type	Chain	Res	Atoms	RSCC	RSR	LLDF	B-factors(Å <sup>2</sup> )	Q<0.9
2	HEM	A	801	43/43	0.98	0.10	0.63	19,21,26,30	0
2	HEM	B	801	43/43	0.98	0.11	0.42	17,21,27,29	0
3	H4B	B	802	17/17	0.96	0.11	0.02	18,21,24,26	0
4	ACT	A	803	4/4	0.96	0.09	-0.10	38,38,40,42	0
3	H4B	A	802	17/17	0.96	0.10	-0.30	18,20,25,26	0
6	ZN	A	805	1/1	1.00	0.08	-0.73	26,26,26,26	0
4	ACT	B	803	4/4	0.94	0.09	-0.78	31,32,35,36	0
5	3KJ	A	804	14/14	0.95	0.07	-1.67	18,20,23,27	0
5	3KJ	B	804	14/14	0.96	0.07	-2.54	17,18,23,27	0

## 6.5 Other polymers [i](#)

There are no such residues in this entry.