



Full wwPDB X-ray Structure Validation Report ⓘ

Feb 1, 2016 – 04:43 PM GMT

PDB ID : 4FVZ
Title : Structure of rat nNOS heme domain in complex with N(omega)-methyl- N(o
mega)-methoxy-L-arginine
Authors : Li, H.; Poulos, T.L.
Deposited on : 2012-06-29
Resolution : 1.99 Å(reported)

This is a Full wwPDB X-ray Structure Validation Report for a publicly released PDB entry.
We welcome your comments at validation@mail.wwpdb.org
A user guide is available at
<http://wwpdb.org/validation/2016/XrayValidationReportHelp>
with specific help available everywhere you see the ⓘ symbol.

The following versions of software and data (see [references ⓘ](#)) were used in the production of this report:

MolProbity : 4.02b-467
Mogul : 1.7 (RC4), CSD as536be (2015)
Xtriage (Phenix) : 1.9-1692
EDS : rb-20026688
Percentile statistics : 20151230.v01 (using entries in the PDB archive December 30th 2015)
Refmac : 5.8.0135
CCP4 : 6.5.0
Ideal geometry (proteins) : Engh & Huber (2001)
Ideal geometry (DNA, RNA) : Parkinson et al. (1996)
Validation Pipeline (wwPDB-VP) : trunk26865

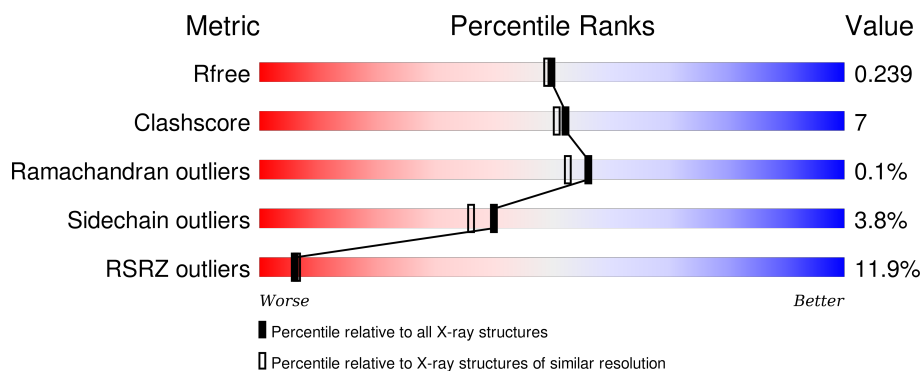
1 Overall quality at a glance

The following experimental techniques were used to determine the structure:

X-RAY DIFFRACTION

The reported resolution of this entry is 1.99 Å.

Percentile scores (ranging between 0-100) for global validation metrics of the entry are shown in the following graphic. The table shows the number of entries on which the scores are based.



Metric	Whole archive (#Entries)	Similar resolution (#Entries, resolution range(Å))
R_{free}	91344	6249 (2.00-2.00)
Clashscore	102246	7340 (2.00-2.00)
Ramachandran outliers	100387	7248 (2.00-2.00)
Sidechain outliers	100360	7247 (2.00-2.00)
RSRZ outliers	91569	6262 (2.00-2.00)

The table below summarises the geometric issues observed across the polymeric chains and their fit to the electron density. The red, orange, yellow and green segments on the lower bar indicate the fraction of residues that contain outliers for ≥ 3 , 2, 1 and 0 types of geometric quality criteria. A grey segment represents the fraction of residues that are not modelled. The numeric value for each fraction is indicated below the corresponding segment, with a dot representing fractions $\leq 5\%$. The upper red bar (where present) indicates the fraction of residues that have poor fit to the electron density. The numeric value is given above the bar.

Mol	Chain	Length	Quality of chain
1	A	422	<div> <div>16%</div> <div>80%</div> <div>15%</div> <div>• •</div> </div>
1	B	422	<div> <div>7%</div> <div>82%</div> <div>14%</div> <div>• •</div> </div>

The following table lists non-polymeric compounds, carbohydrate monomers and non-standard residues in protein, DNA, RNA chains that are outliers for geometric or electron-density-fit criteria:

Mol	Type	Chain	Res	Chirality	Geometry	Clashes	Electron density
4	ACT	A	803	-	-	-	X
4	ACT	B	804	-	-	-	X

2 Entry composition [i](#)

There are 7 unique types of molecules in this entry. The entry contains 7088 atoms, of which 0 are hydrogens and 0 are deuteriums.

In the tables below, the ZeroOcc column contains the number of atoms modelled with zero occupancy, the AltConf column contains the number of residues with at least one atom in alternate conformation and the Trace column contains the number of residues modelled with at most 2 atoms.

- Molecule 1 is a protein called Nitric oxide synthase, brain.

Mol	Chain	Residues	Atoms					ZeroOcc	AltConf	Trace
1	A	407	Total	C	N	O	S	0	1	0
			3318	2124	567	606	21			
1	B	411	Total	C	N	O	S	0	1	0
			3348	2142	574	610	22			

- Molecule 2 is PROTOPORPHYRIN IX CONTAINING FE (three-letter code: HEM) (formula: $C_{34}H_{32}FeN_4O_4$).



Mol	Chain	Residues	Atoms					ZeroOcc	AltConf
2	A	1	Total	C	Fe	N	O	0	0
			43	34	1	4	4		
2	B	1	Total	C	Fe	N	O	0	0
			43	34	1	4	4		

- Molecule 3 is 5,6,7,8-TETRAHYDROBIOPTERIN (three-letter code: H4B) (formula: $C_9H_{15}N_5O_3$).



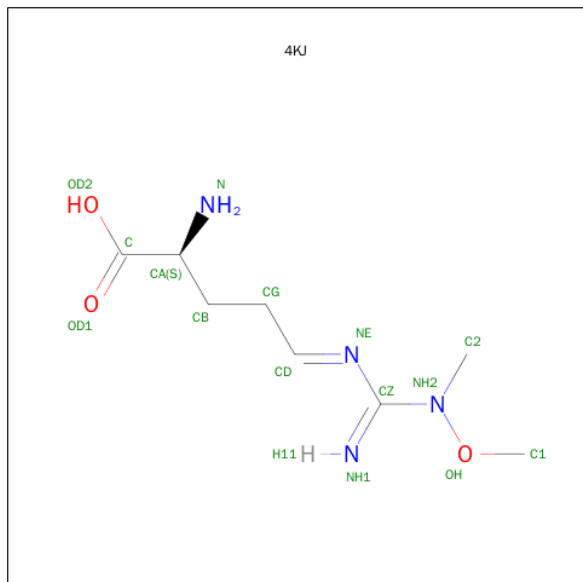
Mol	Chain	Residues	Atoms				ZeroOcc	AltConf
3	A	1	Total 17	C 9	N 5	O 3	0	0
3	B	1	Total 17	C 9	N 5	O 3	0	0

- Molecule 4 is ACETATE ION (three-letter code: ACT) (formula: $\text{C}_2\text{H}_3\text{O}_2$).



Mol	Chain	Residues	Atoms	ZeroOcc	AltConf
4	A	1	Total C O 4 2 2	0	0
4	B	1	Total C O 4 2 2	0	0

- Molecule 5 is (5E)-5-[(N-METHOXY-N-METHYLCARBAMIMIDOYL)IMINO]-L-NORVALINE (three-letter code: 4KJ) (formula: C₈H₁₆N₄O₃).



Mol	Chain	Residues	Atoms				ZeroOcc	AltConf
5	A	1	Total	C	N	O	0	0
			15	8	4	3		
5	B	1	Total	C	N	O	0	0
			15	8	4	3		

- Molecule 6 is ZINC ION (three-letter code: ZN) (formula: Zn).

Mol	Chain	Residues	Atoms		ZeroOcc	AltConf
6	A	1	Total	Zn	0	0
			1	1		

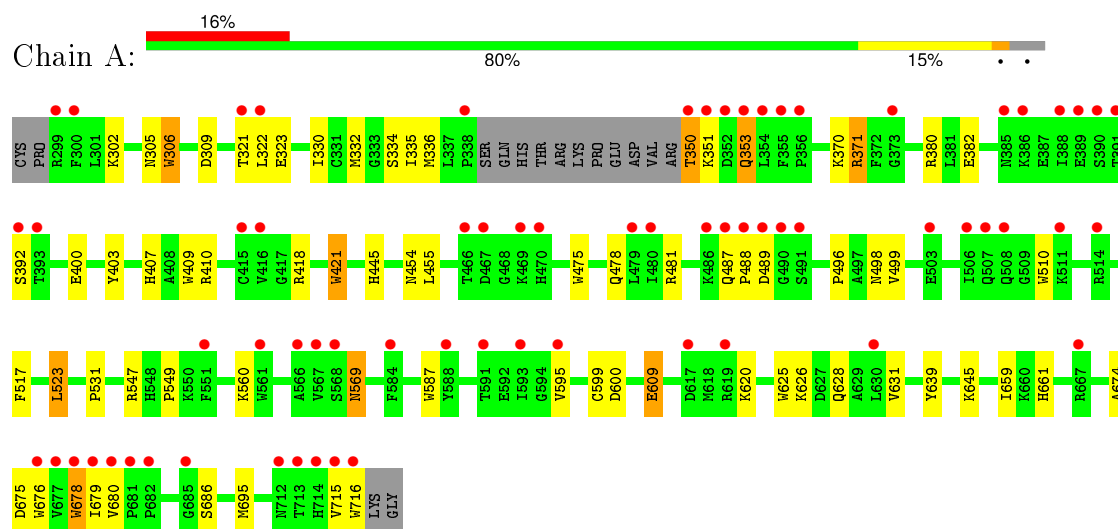
- Molecule 7 is water.

Mol	Chain	Residues	Atoms		ZeroOcc	AltConf
7	A	108	Total	O	0	0
			108	108		
7	B	155	Total	O	0	0
			155	155		

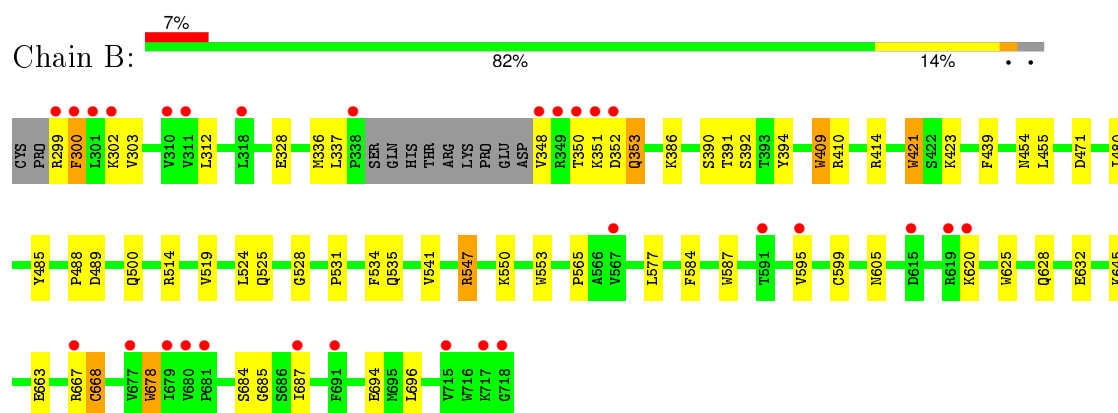
3 Residue-property plots

These plots are drawn for all protein, RNA and DNA chains in the entry. The first graphic for a chain summarises the proportions of errors displayed in the second graphic. The second graphic shows the sequence view annotated by issues in geometry and electron density. Residues are color-coded according to the number of geometric quality criteria for which they contain at least one outlier: green = 0, yellow = 1, orange = 2 and red = 3 or more. A red dot above a residue indicates a poor fit to the electron density ($RSRZ > 2$). Stretches of 2 or more consecutive residues without any outlier are shown as a green connector. Residues present in the sample, but not in the model, are shown in grey.

- Molecule 1: Nitric oxide synthase, brain



- Molecule 1: Nitric oxide synthase, brain



4 Data and refinement statistics

Property	Value	Source
Space group	P 21 21 21	Depositor
Cell constants a, b, c, α , β , γ	51.90Å 110.84Å 164.49Å 90.00° 90.00° 90.00°	Depositor
Resolution (Å)	38.56 – 1.99 38.56 – 1.99	Depositor EDS
% Data completeness (in resolution range)	98.4 (38.56-1.99) 98.4 (38.56-1.99)	Depositor EDS
R_{merge}	0.07	Depositor
R_{sym}	0.07	Depositor
$\langle I/\sigma(I) \rangle$ ¹	1.15 (at 1.98Å)	Xtriage
Refinement program	REFMAC 5.6.0117	Depositor
R, R_{free}	0.202 , 0.245 0.199 , 0.239	Depositor DCC
R_{free} test set	3217 reflections (5.19%)	DCC
Wilson B-factor (Å ²)	35.5	Xtriage
Anisotropy	0.780	Xtriage
Bulk solvent k_{sol} (e/Å ³), B_{sol} (Å ²)	0.36 , 48.9	EDS
Estimated twinning fraction	No twinning to report.	Xtriage
L-test for twinning ²	$\langle L \rangle = 0.49$, $\langle L^2 \rangle = 0.32$	Xtriage
Outliers	1 of 65325 reflections (0.002%)	Xtriage
F_o, F_c correlation	0.96	EDS
Total number of atoms	7088	wwPDB-VP
Average B, all atoms (Å ²)	55.0	wwPDB-VP

Xtriage's analysis on translational NCS is as follows: *The largest off-origin peak in the Patterson function is 4.87% of the height of the origin peak. No significant pseudotranslation is detected.*

¹Intensities estimated from amplitudes.

²Theoretical values of $\langle |L| \rangle$, $\langle L^2 \rangle$ for acentric reflections are 0.5, 0.375 respectively for untwinned datasets, and 0.333, 0.2 for perfectly twinned datasets.

5 Model quality [i](#)

5.1 Standard geometry [i](#)

Bond lengths and bond angles in the following residue types are not validated in this section: HEM, ZN, 4KJ, H4B, ACT

The Z score for a bond length (or angle) is the number of standard deviations the observed value is removed from the expected value. A bond length (or angle) with $|Z| > 5$ is considered an outlier worth inspection. RMSZ is the root-mean-square of all Z scores of the bond lengths (or angles).

Mol	Chain	Bond lengths		Bond angles	
		RMSZ	# $ Z > 5$	RMSZ	# $ Z > 5$
1	A	0.74	7/3414 (0.2%)	0.75	2/4632 (0.0%)
1	B	0.82	6/3444 (0.2%)	0.79	3/4669 (0.1%)
All	All	0.78	13/6858 (0.2%)	0.77	5/9301 (0.1%)

All (13) bond length outliers are listed below:

Mol	Chain	Res	Type	Atoms	Z	Observed(Å)	Ideal(Å)
1	B	409	TRP	CD2-CE2	5.86	1.48	1.41
1	A	678	TRP	CD2-CE2	5.85	1.48	1.41
1	B	678	TRP	CD2-CE2	5.79	1.48	1.41
1	B	421	TRP	CD2-CE2	5.75	1.48	1.41
1	B	625	TRP	CD2-CE2	5.35	1.47	1.41
1	A	421	TRP	CD2-CE2	5.34	1.47	1.41
1	B	488	PRO	C-O	-5.34	1.12	1.23
1	A	306	TRP	CD2-CE2	5.31	1.47	1.41
1	A	510	TRP	CD2-CE2	5.23	1.47	1.41
1	A	475	TRP	CD2-CE2	5.18	1.47	1.41
1	A	716	TRP	CD2-CE2	5.16	1.47	1.41
1	B	553	TRP	CD2-CE2	5.08	1.47	1.41
1	A	625	TRP	CD2-CE2	5.04	1.47	1.41

All (5) bond angle outliers are listed below:

Mol	Chain	Res	Type	Atoms	Z	Observed(°)	Ideal(°)
1	B	410	ARG	NE-CZ-NH1	-8.02	116.29	120.30
1	A	418	ARG	NE-CZ-NH1	-6.86	116.87	120.30
1	A	410	ARG	NE-CZ-NH2	5.34	122.97	120.30
1	B	471	ASP	CB-CG-OD2	5.27	123.04	118.30
1	B	489	ASP	CB-CG-OD2	5.25	123.02	118.30

There are no chirality outliers.

There are no planarity outliers.

5.2 Too-close contacts

In the following table, the Non-H and H(model) columns list the number of non-hydrogen atoms and hydrogen atoms in the chain respectively. The H(added) column lists the number of hydrogen atoms added and optimized by MolProbity. The Clashes column lists the number of clashes within the asymmetric unit, whereas Symm-Clashes lists symmetry related clashes.

Mol	Chain	Non-H	H(model)	H(added)	Clashes	Symm-Clashes
1	A	3318	0	3227	53	0
1	B	3348	0	3264	43	0
2	A	43	0	30	4	0
2	B	43	0	30	3	0
3	A	17	0	15	0	0
3	B	17	0	15	0	0
4	A	4	0	3	0	0
4	B	4	0	3	0	0
5	A	15	0	14	2	0
5	B	15	0	14	2	0
6	A	1	0	0	0	0
7	A	108	0	0	2	0
7	B	155	0	0	4	0
All	All	7088	0	6615	90	0

The all-atom clashscore is defined as the number of clashes found per 1000 atoms (including hydrogen atoms). The all-atom clashscore for this structure is 7.

All (90) close contacts within the same asymmetric unit are listed below, sorted by their clash magnitude.

Atom-1	Atom-2	Interatomic distance (Å)	Clash overlap (Å)
1:B:668[B]:CYS:SG	7:B:1054:HOH:O	2.31	0.87
1:A:332:MET:CE	1:A:335:ILE:HG13	2.12	0.80
1:A:371:ARG:CG	1:A:371:ARG:HH21	1.96	0.78
1:A:523:LEU:HD22	1:A:531:PRO:HB2	1.69	0.73
1:B:595:VAL:O	1:B:599:CYS:HB2	1.90	0.72
1:B:353:GLN:H	1:B:353:GLN:HE21	1.36	0.72
1:B:663:GLU:O	1:B:667:ARG:HD2	1.89	0.72
1:A:332:MET:HE3	1:A:335:ILE:HG13	1.73	0.71
1:A:350:THR:N	1:A:353:GLN:NE2	2.39	0.71
1:B:353:GLN:H	1:B:353:GLN:NE2	1.91	0.69

Continued on next page...

Continued from previous page...

Atom-1	Atom-2	Interatomic distance (Å)	Clash overlap (Å)
1:B:565:PRO:HG2	5:B:803:4KJ:H13	1.76	0.66
1:B:391:THR:O	1:B:392:SER:HB2	1.94	0.66
1:A:332:MET:HE2	1:A:335:ILE:HG13	1.77	0.65
1:A:481:ARG:HD3	1:A:498:ASN:HD21	1.60	0.65
5:A:804:4KJ:H10	5:A:804:4KJ:OH	1.98	0.62
1:A:371:ARG:HG2	1:A:371:ARG:HH21	1.63	0.61
1:A:321:THR:HG23	1:A:322:LEU:HG	1.85	0.58
1:A:371:ARG:CG	1:A:371:ARG:NH2	2.62	0.58
2:A:801:HEM:HHC	2:A:801:HEM:HBB2	1.85	0.58
1:A:371:ARG:HG2	1:A:371:ARG:NH2	2.19	0.57
1:A:661:HIS:ND1	7:A:1008:HOH:O	2.33	0.57
1:A:631:VAL:HG11	1:B:628:GLN:HG3	1.88	0.55
1:A:321:THR:HG23	1:A:322:LEU:H	1.71	0.55
1:A:380:ARG:HD3	1:A:400:GLU:OE1	2.07	0.54
1:B:300:PHE:N	1:B:300:PHE:CD1	2.74	0.54
1:B:300:PHE:HD1	1:B:300:PHE:H	1.55	0.54
1:A:371:ARG:HG3	1:A:371:ARG:HH21	1.72	0.53
1:A:631:VAL:HG11	1:B:628:GLN:CG	2.38	0.53
1:A:626:LYS:HB3	1:B:687:ILE:HD12	1.91	0.53
1:A:323:GLU:HG2	1:B:328:GLU:HB3	1.90	0.52
1:A:517:PHE:HB2	1:A:560:LYS:HE3	1.90	0.52
2:A:801:HEM:C4B	5:A:804:4KJ:H14	2.44	0.52
2:A:801:HEM:HMC1	2:A:801:HEM:HBC2	1.93	0.51
1:A:569:ASN:H	1:A:569:ASN:HD22	1.58	0.50
1:B:525:GLN:HE21	1:B:528:GLY:HA2	1.76	0.50
2:A:801:HEM:CMC	2:A:801:HEM:HBC2	2.42	0.49
1:B:348:VAL:HG13	1:B:348:VAL:O	2.12	0.49
1:A:321:THR:HA	7:A:938:HOH:O	2.14	0.48
1:A:332:MET:HE1	7:B:1046:HOH:O	2.12	0.48
1:B:584:PHE:CD1	2:B:801:HEM:HAC	2.48	0.48
1:A:455:LEU:HD12	1:A:587:TRP:HB3	1.96	0.48
1:B:587:TRP:H	2:B:801:HEM:HAB	1.79	0.48
1:A:330:ILE:HD11	1:B:696:LEU:HB3	1.95	0.48
1:A:336:MET:CE	1:A:678:TRP:HZ2	2.26	0.47
1:A:674:ALA:HB3	1:A:695:MET:HB3	1.97	0.46
1:B:480:ILE:HA	7:B:906:HOH:O	2.15	0.46
1:B:414:ARG:HD3	1:B:678:TRP:CD2	2.51	0.45
1:A:675:ASP:O	1:A:679:ILE:HG12	2.16	0.45
1:A:487:GLN:HB3	1:A:488:PRO:HD2	1.98	0.45
1:A:481:ARG:HD3	1:A:498:ASN:ND2	2.29	0.45
1:B:605:ASN:ND2	7:B:904:HOH:O	2.35	0.45

Continued on next page...

Continued from previous page...

Atom-1	Atom-2	Interatomic distance (Å)	Clash overlap (Å)
1:A:569:ASN:H	1:A:569:ASN:ND2	2.15	0.44
1:A:351:LYS:HE2	1:A:392:SER:HB3	2.00	0.44
1:A:306:TRP:CG	1:B:336:MET:HE1	2.53	0.44
1:A:332:MET:O	1:A:335:ILE:HG12	2.18	0.43
1:A:445:HIS:C	1:A:445:HIS:CD2	2.91	0.43
1:B:684:SER:O	1:B:685:GLY:C	2.56	0.43
1:A:403:TYR:CE1	1:A:407:HIS:CE1	3.06	0.43
1:A:676:TRP:CE2	1:A:680:VAL:HG21	2.54	0.43
5:B:803:4KJ:H10	5:B:803:4KJ:H16	2.00	0.43
1:B:584:PHE:CD1	2:B:801:HEM:CAC	3.02	0.43
1:A:496:PRO:HA	1:A:499:VAL:HG23	2.00	0.43
1:A:478:GLN:HB2	1:A:481:ARG:HG3	1.99	0.43
1:B:409:TRP:CE3	1:B:421:TRP:HA	2.53	0.43
1:B:350:THR:HG22	1:B:351:LYS:H	1.83	0.43
1:B:302:LYS:HE3	1:B:302:LYS:HB2	1.70	0.43
1:A:409:TRP:CE3	1:A:421:TRP:HA	2.53	0.43
1:B:684:SER:HB3	1:B:687:ILE:HG12	2.01	0.42
1:A:334:SER:O	1:B:694:GLU:HG2	2.19	0.42
1:B:485:TYR:CZ	1:B:514:ARG:HA	2.54	0.42
1:B:352:ASP:HB3	1:B:353:GLN:NE2	2.35	0.42
1:B:439:PHE:CD2	1:B:534:PHE:HB3	2.54	0.42
1:A:659:ILE:HD13	1:A:659:ILE:HA	1.94	0.42
1:A:628:GLN:NE2	1:B:632:GLU:OE2	2.53	0.42
1:B:524:LEU:O	1:B:531:PRO:HA	2.20	0.41
1:A:595:VAL:O	1:A:599:CYS:HB2	2.20	0.41
1:A:609:GLU:H	1:A:609:GLU:HG3	1.60	0.41
1:B:519:VAL:HG21	1:B:541:VAL:HG11	2.03	0.41
1:A:686:SER:OG	1:B:595:VAL:HG12	2.20	0.41
1:B:394:TYR:CE2	1:B:577:LEU:HD21	2.55	0.41
1:A:631:VAL:CG1	1:B:628:GLN:HG3	2.51	0.41
1:A:306:TRP:CD2	1:B:336:MET:CE	3.04	0.41
1:A:306:TRP:CD2	1:B:336:MET:HE1	2.56	0.40
1:A:599:CYS:O	1:A:600:ASP:C	2.60	0.40
1:B:547:ARG:H	1:B:547:ARG:HD3	1.86	0.40
1:A:305:ASN:O	1:A:309:ASP:N	2.54	0.40
1:B:303:VAL:HG23	1:B:312:LEU:HB2	2.03	0.40
1:B:386:LYS:HE2	1:B:386:LYS:HB3	1.90	0.40
1:A:549:PRO:HB3	1:A:639:TYR:CE1	2.57	0.40
1:A:382:GLU:HA	1:A:382:GLU:OE1	2.21	0.40

There are no symmetry-related clashes.

5.3 Torsion angles [i](#)

5.3.1 Protein backbone [i](#)

In the following table, the Percentiles column shows the percent Ramachandran outliers of the chain as a percentile score with respect to all X-ray entries followed by that with respect to entries of similar resolution.

The Analysed column shows the number of residues for which the backbone conformation was analysed, and the total number of residues.

Mol	Chain	Analysed	Favoured	Allowed	Outliers	Percentiles	
1	A	404/422 (96%)	387 (96%)	16 (4%)	1 (0%)	52	48
1	B	408/422 (97%)	395 (97%)	13 (3%)	0	100	100
All	All	812/844 (96%)	782 (96%)	29 (4%)	1 (0%)	56	53

All (1) Ramachandran outliers are listed below:

Mol	Chain	Res	Type
1	A	489	ASP

5.3.2 Protein sidechains [i](#)

In the following table, the Percentiles column shows the percent sidechain outliers of the chain as a percentile score with respect to all X-ray entries followed by that with respect to entries of similar resolution.

The Analysed column shows the number of residues for which the sidechain conformation was analysed, and the total number of residues.

Mol	Chain	Analysed	Rotameric	Outliers	Percentiles	
1	A	364/377 (97%)	351 (96%)	13 (4%)	42	39
1	B	367/377 (97%)	351 (96%)	16 (4%)	35	30
All	All	731/754 (97%)	702 (96%)	29 (4%)	40	33

All (29) residues with a non-rotameric sidechain are listed below:

Mol	Chain	Res	Type
1	A	302	LYS
1	A	350	THR
1	A	353	GLN
1	A	370	LYS
1	A	371	ARG

Continued on next page...

Continued from previous page...

Mol	Chain	Res	Type
1	A	454	ASN
1	A	523	LEU
1	A	547	ARG
1	A	569	ASN
1	A	609	GLU
1	A	620	LYS
1	A	645	LYS
1	A	715	VAL
1	B	299	ARG
1	B	300	PHE
1	B	337	LEU
1	B	353	GLN
1	B	390	SER
1	B	423	LYS
1	B	454	ASN
1	B	455	LEU
1	B	500	GLN
1	B	535	GLN
1	B	547	ARG
1	B	550	LYS
1	B	620	LYS
1	B	645	LYS
1	B	668[A]	CYS
1	B	668[B]	CYS

Some sidechains can be flipped to improve hydrogen bonding and reduce clashes. All (13) such sidechains are listed below:

Mol	Chain	Res	Type
1	A	353	GLN
1	A	454	ASN
1	A	507	GLN
1	A	569	ASN
1	A	605	ASN
1	A	642	GLN
1	A	697	ASN
1	B	353	GLN
1	B	385	ASN
1	B	454	ASN
1	B	601	ASN
1	B	642	GLN
1	B	697	ASN

5.3.3 RNA ⓘ

There are no RNA molecules in this entry.

5.4 Non-standard residues in protein, DNA, RNA chains ⓘ

There are no non-standard protein/DNA/RNA residues in this entry.

5.5 Carbohydrates ⓘ

There are no carbohydrates in this entry.

5.6 Ligand geometry ⓘ

Of 9 ligands modelled in this entry, 1 is monoatomic - leaving 8 for Mogul analysis.

In the following table, the Counts columns list the number of bonds (or angles) for which Mogul statistics could be retrieved, the number of bonds (or angles) that are observed in the model and the number of bonds (or angles) that are defined in the chemical component dictionary. The Link column lists molecule types, if any, to which the group is linked. The Z score for a bond length (or angle) is the number of standard deviations the observed value is removed from the expected value. A bond length (or angle) with $|Z| > 2$ is considered an outlier worth inspection. RMSZ is the root-mean-square of all Z scores of the bond lengths (or angles).

Mol	Type	Chain	Res	Link	Bond lengths			Bond angles		
					Counts	RMSZ	$\# Z > 2$	Counts	RMSZ	$\# Z > 2$
2	HEM	A	801	1	30,50,50	2.74	12 (40%)	24,82,82	2.87	9 (37%)
3	H4B	A	802	-	13,18,18	0.93	0	11,26,26	2.89	6 (54%)
4	ACT	A	803	-	1,3,3	1.69	0	0,3,3	0.00	-
5	4KJ	A	804	-	8,14,14	2.86	2 (25%)	3,17,17	1.42	1 (33%)
2	HEM	B	801	1	30,50,50	2.66	11 (36%)	24,82,82	2.86	12 (50%)
3	H4B	B	802	-	13,18,18	0.83	0	11,26,26	2.51	3 (27%)
5	4KJ	B	803	-	8,14,14	2.99	2 (25%)	3,17,17	1.54	1 (33%)
4	ACT	B	804	-	1,3,3	1.29	0	0,3,3	0.00	-

In the following table, the Chirals column lists the number of chiral outliers, the number of chiral centers analysed, the number of these observed in the model and the number defined in the chemical component dictionary. Similar counts are reported in the Torsion and Rings columns. '-' means no outliers of that kind were identified.

Mol	Type	Chain	Res	Link	Chirals	Torsions	Rings
2	HEM	A	801	1	-	0/10/54/54	0/0/8/8

Continued on next page...

Continued from previous page...

Mol	Type	Chain	Res	Link	Chirals	Torsions	Rings
3	H4B	A	802	-	-	0/8/17/17	0/2/2/2
4	ACT	A	803	-	-	0/0/0/0	0/0/0/0
5	4KJ	A	804	-	-	0/5/17/17	0/0/0/0
2	HEM	B	801	1	-	0/10/54/54	0/0/8/8
3	H4B	B	802	-	-	0/8/17/17	0/2/2/2
5	4KJ	B	803	-	-	0/5/17/17	0/0/0/0
4	ACT	B	804	-	-	0/0/0/0	0/0/0/0

All (27) bond length outliers are listed below:

Mol	Chain	Res	Type	Atoms	Z	Observed(Å)	Ideal(Å)
2	A	801	HEM	C3D-C4D	-4.67	1.45	1.51
2	A	801	HEM	C2D-C3D	-2.72	1.46	1.54
2	A	801	HEM	C3B-C4B	-2.58	1.49	1.51
2	B	801	HEM	C2C-C1C	-2.43	1.48	1.52
2	B	801	HEM	C2D-C3D	-2.32	1.47	1.54
2	B	801	HEM	FE-ND	2.43	2.10	1.97
2	B	801	HEM	FE-NB	2.52	2.10	1.97
2	A	801	HEM	CHD-C1D	2.53	1.45	1.38
2	A	801	HEM	FE-NB	2.56	2.11	1.97
2	A	801	HEM	C2A-C3A	2.66	1.45	1.37
2	B	801	HEM	C1A-CHA	2.89	1.47	1.39
2	B	801	HEM	CHC-C4B	2.94	1.47	1.38
2	A	801	HEM	C4A-CHB	3.04	1.48	1.39
2	A	801	HEM	CHC-C4B	3.07	1.47	1.38
2	B	801	HEM	C2A-C3A	3.19	1.47	1.37
2	B	801	HEM	CHC-C1C	3.64	1.44	1.36
2	A	801	HEM	CHD-C4C	3.75	1.45	1.36
2	B	801	HEM	CHD-C4C	4.13	1.46	1.36
2	A	801	HEM	CHC-C1C	4.14	1.46	1.36
5	B	803	4KJ	CD-NE	4.25	1.37	1.26
5	A	804	4KJ	CD-NE	4.82	1.38	1.26
2	A	801	HEM	C4C-NC	6.26	1.43	1.36
5	A	804	4KJ	OH-NH2	6.26	1.48	1.40
5	B	803	4KJ	OH-NH2	7.12	1.49	1.40
2	B	801	HEM	C1C-NC	7.31	1.45	1.36
2	B	801	HEM	C4C-NC	7.40	1.45	1.36
2	A	801	HEM	C1C-NC	7.77	1.45	1.36

All (32) bond angle outliers are listed below:

Mol	Chain	Res	Type	Atoms	Z	Observed(°)	Ideal(°)
2	A	801	HEM	CBA-CAA-C2A	-5.83	102.08	112.53
2	B	801	HEM	CBA-CAA-C2A	-5.24	103.14	112.53
2	A	801	HEM	C3C-CAC-CBC	-4.22	117.98	124.46
3	A	802	H4B	N3-C2-N1	-3.91	119.12	125.53
2	B	801	HEM	C3C-CAC-CBC	-3.19	119.56	124.46
2	B	801	HEM	C3B-CAB-CBB	-2.98	119.89	124.46
2	A	801	HEM	CBD-CAD-C3D	-2.60	105.99	113.55
2	B	801	HEM	CBD-CAD-C3D	-2.53	106.19	113.55
2	B	801	HEM	CAA-CBA-CGA	-2.39	108.36	112.75
2	A	801	HEM	CAD-CBD-CGD	-2.33	103.49	113.02
5	B	803	4KJ	OH-NH2-C2	2.15	117.64	114.69
5	A	804	4KJ	C1-OH-NH2	2.24	113.54	109.91
2	B	801	HEM	C3B-C4B-NB	2.26	115.95	111.63
3	B	802	H4B	C4A-C8A-N8	2.34	121.19	118.43
2	B	801	HEM	C2C-C1C-NC	2.44	114.32	110.21
3	A	802	H4B	C2-N1-C8A	2.75	120.71	114.54
3	A	802	H4B	C4A-C8A-N8	2.79	121.71	118.43
2	A	801	HEM	CAD-C3D-C4D	3.17	123.65	112.47
2	A	801	HEM	CMD-C2D-C3D	3.22	128.59	114.35
3	B	802	H4B	C4-N3-C2	3.30	120.51	115.94
2	B	801	HEM	CMD-C2D-C3D	3.76	130.99	114.35
3	A	802	H4B	N2-C2-N3	3.83	123.54	117.20
2	A	801	HEM	CMB-C2B-C3B	3.94	126.37	116.53
2	B	801	HEM	CMC-C2C-C3C	4.40	127.51	116.53
2	B	801	HEM	CAD-C3D-C4D	4.46	128.19	112.47
3	A	802	H4B	C4-C4A-C8A	4.67	118.79	114.56
3	A	802	H4B	C4-N3-C2	4.79	122.59	115.94
2	B	801	HEM	CAD-C3D-C2D	5.32	128.51	113.22
2	B	801	HEM	CMB-C2B-C3B	5.62	130.56	116.53
2	A	801	HEM	CMC-C2C-C3C	5.77	130.93	116.53
3	B	802	H4B	C4-C4A-C8A	6.65	120.58	114.56
2	A	801	HEM	CAD-C3D-C2D	6.83	132.84	113.22

There are no chirality outliers.

There are no torsion outliers.

There are no ring outliers.

4 monomers are involved in 10 short contacts:

Mol	Chain	Res	Type	Clashes	Symm-Clashes
2	A	801	HEM	4	0
5	A	804	4KJ	2	0
2	B	801	HEM	3	0

Continued on next page...

Continued from previous page...

Mol	Chain	Res	Type	Clashes	Symm-Clashes
5	B	803	4KJ	2	0

5.7 Other polymers [i](#)

There are no such residues in this entry.

5.8 Polymer linkage issues [i](#)

There are no chain breaks in this entry.

6 Fit of model and data ⓘ

6.1 Protein, DNA and RNA chains ⓘ

In the following table, the column labelled ‘#RSRZ> 2’ contains the number (and percentage) of RSRZ outliers, followed by percent RSRZ outliers for the chain as percentile scores relative to all X-ray entries and entries of similar resolution. The OWAB column contains the minimum, median, 95th percentile and maximum values of the occupancy-weighted average B-factor per residue. The column labelled ‘Q< 0.9’ lists the number of (and percentage) of residues with an average occupancy less than 0.9.

Mol	Chain	Analysed	<RSRZ>	#RSRZ>2	OWAB(Å ²)	Q<0.9
1	A	407/422 (96%)	0.93	68 (16%) 2 3	32, 58, 98, 128	0
1	B	411/422 (97%)	0.47	29 (7%) 19 20	32, 47, 77, 110	0
All	All	818/844 (96%)	0.70	97 (11%) 6 6	32, 52, 94, 128	0

All (97) RSRZ outliers are listed below:

Mol	Chain	Res	Type	RSRZ
1	B	300	PHE	9.4
1	B	350	THR	8.1
1	A	715	VAL	7.0
1	A	299	ARG	6.5
1	B	718	GLY	6.4
1	B	348	VAL	6.0
1	A	350	THR	5.3
1	A	355	PHE	5.1
1	A	716	TRP	4.9
1	B	619	ARG	4.8
1	A	352	ASP	4.7
1	A	351	LYS	4.6
1	A	488	PRO	4.4
1	B	299	ARG	4.4
1	A	506	ILE	4.3
1	A	300	PHE	4.3
1	B	352	ASP	4.2
1	B	351	LYS	4.0
1	A	712	ASN	4.0
1	A	567	VAL	3.8
1	A	388	ILE	3.8
1	A	713	THR	3.8
1	A	392	SER	3.7
1	B	715	VAL	3.6

Continued on next page...

Continued from previous page...

Mol	Chain	Res	Type	RSRZ
1	A	490	GLY	3.6
1	A	491	SER	3.6
1	B	620	LYS	3.6
1	B	301	LEU	3.6
1	A	391	THR	3.5
1	A	678	TRP	3.4
1	A	389	GLU	3.4
1	A	619	ARG	3.3
1	B	567	VAL	3.3
1	A	588	TYR	3.2
1	B	310	VAL	3.2
1	A	566	ALA	3.2
1	A	385	ASN	3.2
1	A	354	LEU	3.2
1	A	386	LYS	3.1
1	A	390	SER	3.1
1	A	507	GLN	3.1
1	A	682	PRO	3.0
1	A	591	THR	3.0
1	A	322	LEU	3.0
1	A	486	LYS	3.0
1	B	677	VAL	3.0
1	A	470	HIS	3.0
1	A	584	PHE	3.0
1	A	393	THR	3.0
1	A	489	ASP	3.0
1	B	349	ARG	2.9
1	A	415	CYS	2.9
1	A	503	GLU	2.9
1	A	667	ARG	2.9
1	A	487	GLN	2.9
1	A	679	ILE	2.8
1	B	615	ASP	2.8
1	A	676	TRP	2.7
1	A	681	PRO	2.7
1	A	321	THR	2.7
1	A	416	VAL	2.7
1	A	680	VAL	2.7
1	A	353	GLN	2.6
1	A	593	ILE	2.6
1	A	561	TRP	2.6
1	A	480	ILE	2.6

Continued on next page...

Continued from previous page...

Mol	Chain	Res	Type	RSRZ
1	A	714	HIS	2.6
1	A	508	GLN	2.5
1	B	338	PRO	2.5
1	A	373	GLY	2.5
1	A	595	VAL	2.4
1	B	680	VAL	2.4
1	A	617	ASP	2.4
1	A	338	PRO	2.4
1	B	681	PRO	2.4
1	A	479	LEU	2.4
1	B	691	PHE	2.4
1	A	469	LYS	2.4
1	A	514	ARG	2.4
1	A	511	LYS	2.3
1	B	302	LYS	2.3
1	A	630	LEU	2.3
1	B	595	VAL	2.3
1	A	551	PHE	2.3
1	A	356	PRO	2.3
1	A	685	GLY	2.2
1	B	318	LEU	2.2
1	B	591	THR	2.2
1	B	667	ARG	2.2
1	A	467	ASP	2.1
1	B	311	VAL	2.1
1	B	717	LYS	2.1
1	A	677	VAL	2.1
1	A	466	THR	2.1
1	B	679	ILE	2.0
1	B	687	ILE	2.0
1	A	568	SER	2.0

6.2 Non-standard residues in protein, DNA, RNA chains ⓘ

There are no non-standard protein/DNA/RNA residues in this entry.

6.3 Carbohydrates ⓘ

There are no carbohydrates in this entry.

6.4 Ligands [i](#)

In the following table, the Atoms column lists the number of modelled atoms in the group and the number defined in the chemical component dictionary. LLDF column lists the quality of electron density of the group with respect to its neighbouring residues in protein, DNA or RNA chains. The B-factors column lists the minimum, median, 95th percentile and maximum values of B factors of atoms in the group. The column labelled 'Q< 0.9' lists the number of atoms with occupancy less than 0.9.

Mol	Type	Chain	Res	Atoms	RSCC	RSR	LLDF	B-factors(Å ²)	Q<0.9
4	ACT	A	803	4/4	0.91	0.23	5.92	71,71,74,75	0
4	ACT	B	804	4/4	0.95	0.18	3.88	48,54,58,58	0
5	4KJ	A	804	15/15	0.96	0.25	1.26	38,41,46,59	0
2	HEM	A	801	43/43	0.97	0.21	1.00	36,38,41,45	0
2	HEM	B	801	43/43	0.98	0.17	0.99	29,37,42,46	0
3	H4B	A	802	17/17	0.96	0.18	0.73	35,39,43,44	0
3	H4B	B	802	17/17	0.96	0.17	0.49	33,38,42,44	0
5	4KJ	B	803	15/15	0.97	0.18	0.41	32,38,61,65	0
6	ZN	A	805	1/1	0.99	0.06	-1.42	48,48,48,48	0

6.5 Other polymers [i](#)

There are no such residues in this entry.