



Full wwPDB X-ray Structure Validation Report ⓘ

Mar 21, 2016 – 08:28 AM EDT

PDB ID : 5FYM
Title : Crystal structure of JmjC domain of human histone demethylase UTY in complex with D-2-hydroxyglutarate
Authors : Nowak, R.; Krojer, T.; Johansson, C.; Gileadi, C.; Kupinska, K.; von Delft, F.; Arrowsmith, C.H.; Bountra, C.; Edwards, A.; Oppermann, U.
Deposited on : 2016-03-08
Resolution : 2.00 Å(reported)

This is a Full wwPDB X-ray Structure Validation Report for a publicly released PDB entry.
We welcome your comments at validation@mail.wwpdb.org
A user guide is available at
<http://wwpdb.org/validation/2016/XrayValidationReportHelp>
with specific help available everywhere you see the ⓘ symbol.

The following versions of software and data (see [references ⓘ](#)) were used in the production of this report:

MolProbity : 4.02b-467
Mogul : 1.7.1 (RC1), CSD as537be (2016)
Xtriage (Phenix) : 1.9-1692
EDS : rb-20027107
Percentile statistics : 20151230.v01 (using entries in the PDB archive December 30th 2015)
Refmac : 5.8.0122
CCP4 : 6.5.0
Ideal geometry (proteins) : Engh & Huber (2001)
Ideal geometry (DNA, RNA) : Parkinson et al. (1996)
Validation Pipeline (wwPDB-VP) : rb-20027107

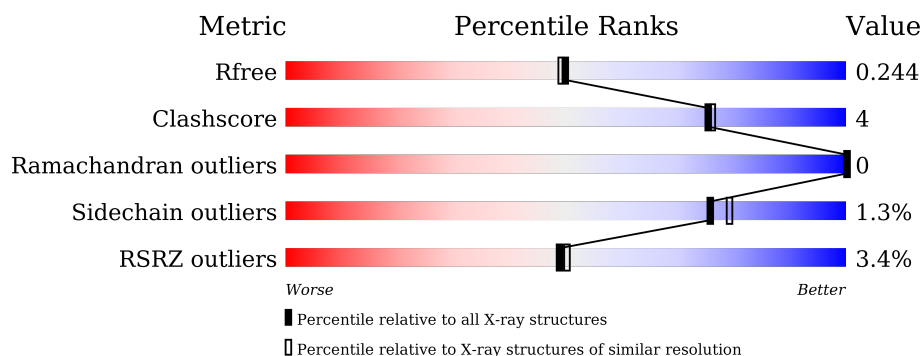
1 Overall quality at a glance

The following experimental techniques were used to determine the structure:

X-RAY DIFFRACTION

The reported resolution of this entry is 2.00 Å.

Percentile scores (ranging between 0-100) for global validation metrics of the entry are shown in the following graphic. The table shows the number of entries on which the scores are based.



Metric	Whole archive (#Entries)	Similar resolution (#Entries, resolution range(Å))
R_{free}	91344	6249 (2.00-2.00)
Clashscore	102246	7340 (2.00-2.00)
Ramachandran outliers	100387	7248 (2.00-2.00)
Sidechain outliers	100360	7247 (2.00-2.00)
RSRZ outliers	91569	6262 (2.00-2.00)

The table below summarises the geometric issues observed across the polymeric chains and their fit to the electron density. The red, orange, yellow and green segments on the lower bar indicate the fraction of residues that contain outliers for ≥ 3 , 2, 1 and 0 types of geometric quality criteria. A grey segment represents the fraction of residues that are not modelled. The numeric value for each fraction is indicated below the corresponding segment, with a dot representing fractions $\leq 5\%$. The upper red bar (where present) indicates the fraction of residues that have poor fit to the electron density. The numeric value is given above the bar.

Mol	Chain	Length	Quality of chain
1	A	478	<div> <div style="width: 100%; height: 10px; background: linear-gradient(to right, red 0%, red 1%, orange 1%, orange 87%, yellow 87%, yellow 93%, green 93%, green 100%);"></div> <div style="display: flex; justify-content: space-between; width: 100%;"> % 87% 6% 7% </div> </div>
1	B	478	<div> <div style="width: 100%; height: 10px; background: linear-gradient(to right, red 0%, red 5%, orange 5%, orange 83%, yellow 83%, yellow 93%, green 93%, green 100%);"></div> <div style="display: flex; justify-content: space-between; width: 100%;"> 5% 83% 10% 7% </div> </div>

The following table lists non-polymeric compounds, carbohydrate monomers and non-standard residues in protein, DNA, RNA chains that are outliers for geometric or electron-density-fit criteria:

Mol	Type	Chain	Res	Chirality	Geometry	Clashes	Electron density
3	2HG	A	2267	-	-	-	X
4	EDO	A	2268	-	-	-	X
4	EDO	A	2272	-	-	-	X
4	EDO	A	2276	-	-	-	X
4	EDO	A	2277	-	-	-	X
4	EDO	A	2278	-	-	-	X
4	EDO	A	2279	-	-	-	X
4	EDO	B	2278	-	-	-	X
4	EDO	B	2279	-	-	-	X
4	EDO	B	2281	-	-	-	X
4	EDO	B	2283	-	-	-	X
4	EDO	B	2284	-	-	-	X
4	EDO	B	2285	-	-	-	X
4	EDO	B	2287	-	-	-	X

2 Entry composition

There are 6 unique types of molecules in this entry. The entry contains 7949 atoms, of which 0 are hydrogens and 0 are deuteriums.

In the tables below, the ZeroOcc column contains the number of atoms modelled with zero occupancy, the AltConf column contains the number of residues with at least one atom in alternate conformation and the Trace column contains the number of residues modelled with at most 2 atoms.

- Molecule 1 is a protein called HISTONE DEMETHYLASE UTY.

Mol	Chain	Residues	Atoms					ZeroOcc	AltConf	Trace
1	A	444	Total	C	N	O	S	0	5	0
			3565	2285	613	646	21			
1	B	446	Total	C	N	O	S	0	7	0
			3609	2311	613	664	21			

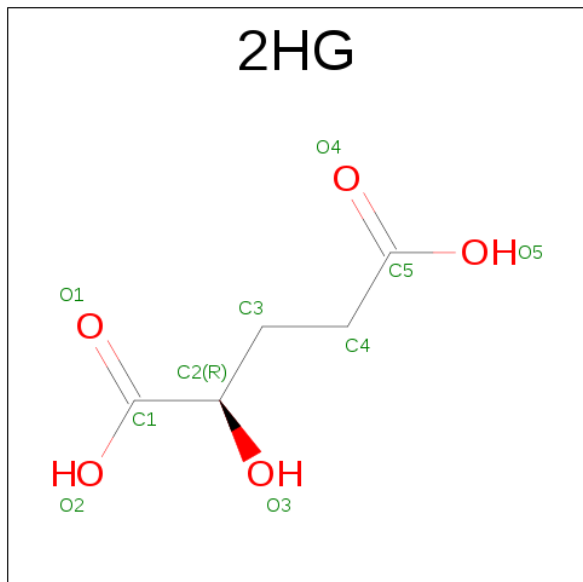
There are 16 discrepancies between the modelled and reference sequences:

Chain	Residue	Modelled	Actual	Comment	Reference
A	798	MET	-	EXPRESSION TAG	UNP O14607
A	1269	ALA	-	EXPRESSION TAG	UNP O14607
A	1270	GLU	-	EXPRESSION TAG	UNP O14607
A	1271	ASN	-	EXPRESSION TAG	UNP O14607
A	1272	LEU	-	EXPRESSION TAG	UNP O14607
A	1273	TYR	-	EXPRESSION TAG	UNP O14607
A	1274	PHE	-	EXPRESSION TAG	UNP O14607
A	1275	GLN	-	EXPRESSION TAG	UNP O14607
B	798	MET	-	EXPRESSION TAG	UNP O14607
B	1269	ALA	-	EXPRESSION TAG	UNP O14607
B	1270	GLU	-	EXPRESSION TAG	UNP O14607
B	1271	ASN	-	EXPRESSION TAG	UNP O14607
B	1272	LEU	-	EXPRESSION TAG	UNP O14607
B	1273	TYR	-	EXPRESSION TAG	UNP O14607
B	1274	PHE	-	EXPRESSION TAG	UNP O14607
B	1275	GLN	-	EXPRESSION TAG	UNP O14607

- Molecule 2 is MANGANESE (II) ION (three-letter code: MN) (formula: Mn).

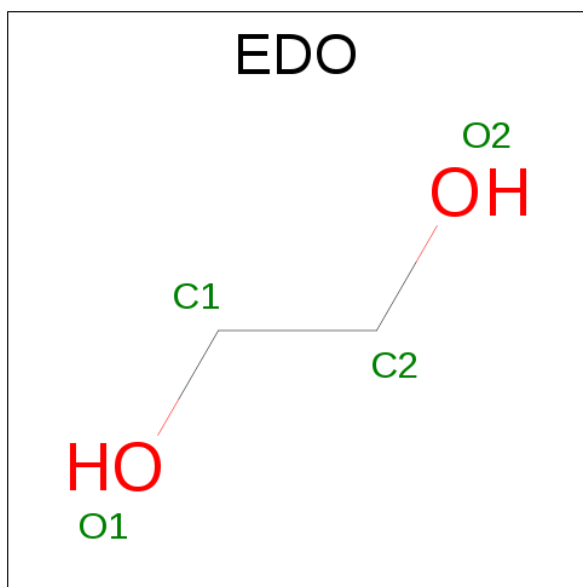
Mol	Chain	Residues	Atoms		ZeroOcc	AltConf
2	B	1	Total	Mn	0	0
			1	1		
2	A	1	Total	Mn	0	0
			1	1		

- Molecule 3 is (2R)-2-HYDROXPENTANEDIOIC ACID (three-letter code: 2HG) (formula: $C_5H_8O_5$).



Mol	Chain	Residues	Atoms			ZeroOcc	AltConf
3	A	1	Total	C	O	0	0
			10	5	5		
3	B	1	Total	C	O	0	0
			10	5	5		

- Molecule 4 is 1,2-ETHANEDIOL (three-letter code: EDO) (formula: $C_2H_6O_2$).



Mol	Chain	Residues	Atoms	ZeroOcc	AltConf
4	A	1	Total C O 4 2 2	0	0
4	A	1	Total C O 4 2 2	0	0
4	A	1	Total C O 4 2 2	0	0
4	A	1	Total C O 4 2 2	0	0
4	A	1	Total C O 4 2 2	0	0
4	A	1	Total C O 4 2 2	0	0
4	A	1	Total C O 4 2 2	0	0
4	A	1	Total C O 4 2 2	0	0
4	A	1	Total C O 4 2 2	0	0
4	A	1	Total C O 4 2 2	0	0
4	A	1	Total C O 4 2 2	0	0
4	A	1	Total C O 4 2 2	0	0
4	A	1	Total C O 4 2 2	0	0
4	A	1	Total C O 4 2 2	0	0
4	B	1	Total C O 4 2 2	0	0
4	B	1	Total C O 4 2 2	0	0
4	B	1	Total C O 4 2 2	0	0
4	B	1	Total C O 4 2 2	0	0
4	B	1	Total C O 4 2 2	0	0
4	B	1	Total C O 4 2 2	0	0
4	B	1	Total C O 4 2 2	0	0
4	B	1	Total C O 4 2 2	0	0

Continued on next page...

Continued from previous page...

Mol	Chain	Residues	Atoms			ZeroOcc	AltConf
4	B	1	Total	C	O	0	0
			4	2	2		
4	B	1	Total	C	O	0	0
			4	2	2		
4	B	1	Total	C	O	0	0
			4	2	2		
4	B	1	Total	C	O	0	0
			4	2	2		
4	B	1	Total	C	O	0	0
			4	2	2		

- Molecule 5 is ZINC ION (three-letter code: ZN) (formula: Zn).

Mol	Chain	Residues	Atoms		ZeroOcc	AltConf
5	B	1	Total	Zn	0	0
			1	1		
5	A	1	Total	Zn	0	0
			1	1		

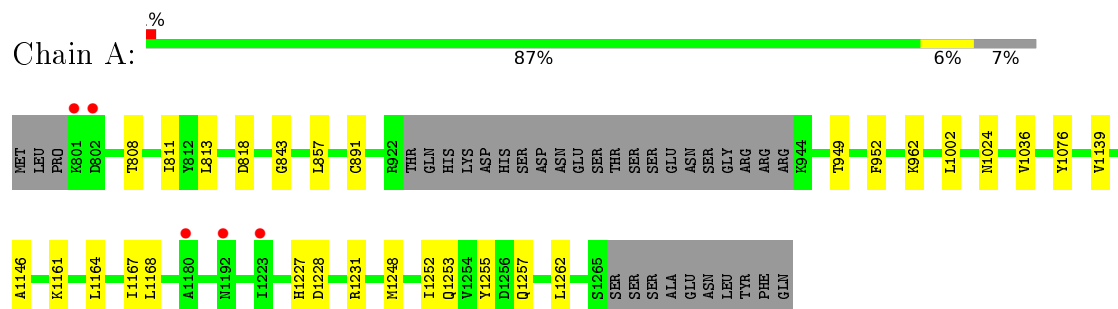
- Molecule 6 is water.

Mol	Chain	Residues	Atoms		ZeroOcc	AltConf
6	A	323	Total	O	0	0
			323	323		
6	B	316	Total	O	0	0
			316	316		

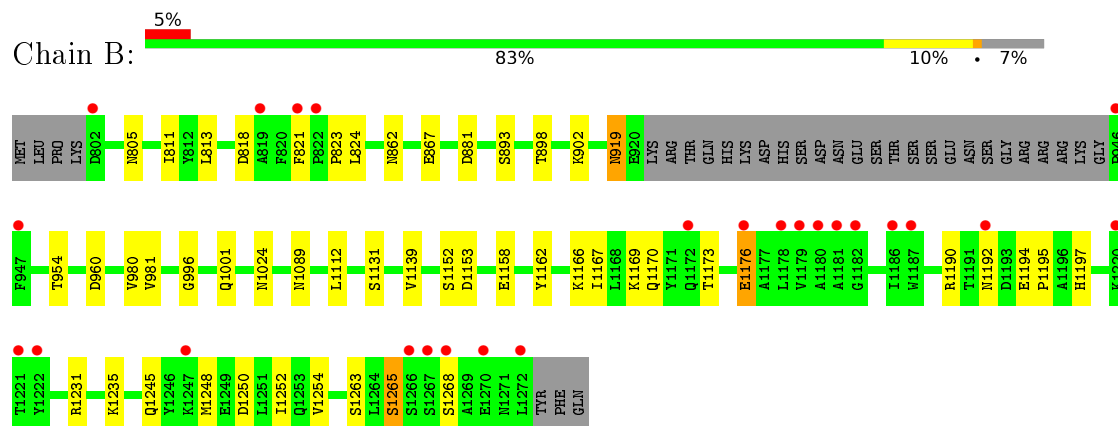
3 Residue-property plots [i](#)

These plots are drawn for all protein, RNA and DNA chains in the entry. The first graphic for a chain summarises the proportions of errors displayed in the second graphic. The second graphic shows the sequence view annotated by issues in geometry and electron density. Residues are color-coded according to the number of geometric quality criteria for which they contain at least one outlier: green = 0, yellow = 1, orange = 2 and red = 3 or more. A red dot above a residue indicates a poor fit to the electron density ($\text{RSRZ} > 2$). Stretches of 2 or more consecutive residues without any outlier are shown as a green connector. Residues present in the sample, but not in the model, are shown in grey.

• Molecule 1: HISTONE DEMETHYLASE UTY



• Molecule 1: HISTONE DEMETHYLASE UTY



4 Data and refinement statistics

Property	Value	Source
Space group	P 21 21 21	Depositor
Cell constants a, b, c, α , β , γ	90.48Å 109.34Å 117.30Å 90.00° 90.00° 90.00°	Depositor
Resolution (Å)	36.82 – 2.00 36.82 – 2.00	Depositor EDS
% Data completeness (in resolution range)	100.0 (36.82-2.00) 88.7 (36.82-2.00)	Depositor EDS
R_{merge}	0.16	Depositor
R_{sym}	(Not available)	Depositor
$\langle I/\sigma(I) \rangle$ ¹	1.92 (at 2.00Å)	Xtriage
Refinement program	PHENIX (PHENIX.REFINE)	Depositor
R, R_{free}	0.192 , 0.245 0.191 , 0.244	Depositor DCC
R_{free} test set	3543 reflections (5.05%)	DCC
Wilson B-factor (Å ²)	27.1	Xtriage
Anisotropy	0.586	Xtriage
Bulk solvent k_{sol} (e/Å ³), B_{sol} (Å ²)	0.32 , 38.4	EDS
Estimated twinning fraction	No twinning to report.	Xtriage
L-test for twinning ²	$\langle L \rangle = 0.48$, $\langle L^2 \rangle = 0.31$	Xtriage
Outliers	0 of 79132 reflections	Xtriage
F_o, F_c correlation	0.95	EDS
Total number of atoms	7949	wwPDB-VP
Average B, all atoms (Å ²)	38.0	wwPDB-VP

Xtriage's analysis on translational NCS is as follows: *The largest off-origin peak in the Patterson function is 5.32% of the height of the origin peak. No significant pseudotranslation is detected.*

¹Intensities estimated from amplitudes.

²Theoretical values of $\langle |L| \rangle$, $\langle L^2 \rangle$ for acentric reflections are 0.5, 0.375 respectively for untwinned datasets, and 0.333, 0.2 for perfectly twinned datasets.

5 Model quality

5.1 Standard geometry

Bond lengths and bond angles in the following residue types are not validated in this section: ZN, MN, EDO, 2HG

The Z score for a bond length (or angle) is the number of standard deviations the observed value is removed from the expected value. A bond length (or angle) with $|Z| > 5$ is considered an outlier worth inspection. RMSZ is the root-mean-square of all Z scores of the bond lengths (or angles).

Mol	Chain	Bond lengths		Bond angles	
		RMSZ	$\# Z > 5$	RMSZ	$\# Z > 5$
1	A	0.39	0/3660	0.50	0/4991
1	B	0.38	0/3704	0.50	0/5049
All	All	0.39	0/7364	0.50	0/10040

There are no bond length outliers.

There are no bond angle outliers.

There are no chirality outliers.

There are no planarity outliers.

5.2 Too-close contacts

In the following table, the Non-H and H(model) columns list the number of non-hydrogen atoms and hydrogen atoms in the chain respectively. The H(added) column lists the number of hydrogen atoms added and optimized by MolProbity. The Clashes column lists the number of clashes within the asymmetric unit, whereas Symm-Clashes lists symmetry related clashes.

Mol	Chain	Non-H	H(model)	H(added)	Clashes	Symm-Clashes
1	A	3565	0	3442	19	0
1	B	3609	0	3483	36	1
2	A	1	0	0	0	0
2	B	1	0	0	0	0
3	A	10	0	5	1	0
3	B	10	0	5	2	0
4	A	56	0	84	4	0
4	B	56	0	84	7	0
5	A	1	0	0	0	0
5	B	1	0	0	0	0
6	A	323	0	0	3	1

Continued on next page...

Continued from previous page...

Mol	Chain	Non-H	H(model)	H(added)	Clashes	Symm-Clashes
6	B	316	0	0	6	0
All	All	7949	0	7103	56	1

The all-atom clashscore is defined as the number of clashes found per 1000 atoms (including hydrogen atoms). The all-atom clashscore for this structure is 4.

All (56) close contacts within the same asymmetric unit are listed below, sorted by their clash magnitude.

Atom-1	Atom-2	Interatomic distance (Å)	Clash overlap (Å)
1:A:1227:HIS:HD1	4:A:2277:EDO:H22	1.47	0.77
1:B:960:ASP:HB2	4:B:2280:EDO:H22	1.69	0.74
1:A:1228:ASP:OD1	1:A:1231[A]:ARG:NH2	2.25	0.68
1:B:862:ASN:ND2	6:B:3041:HOH:O	2.23	0.66
1:A:1231[B]:ARG:NH2	6:A:3292:HOH:O	2.28	0.66
1:A:1253:GLN:OE1	1:A:1257:GLN:NE2	2.29	0.65
1:A:857:LEU:HD13	1:A:1002:LEU:HD21	1.81	0.62
1:A:1257:GLN:HG2	1:B:1231:ARG:HD3	1.79	0.62
1:A:811:ILE:HD12	4:A:2281:EDO:H21	1.82	0.61
1:B:1194:GLU:OE2	1:B:1245:GLN:NE2	2.32	0.61
1:B:1131:SER:HA	4:B:2281:EDO:H12	1.83	0.61
1:B:1231:ARG:NH1	1:B:1235:LYS:O	2.34	0.60
1:A:962:LYS:O	6:A:3104:HOH:O	2.17	0.60
1:A:1262:LEU:HA	1:B:1170[B]:GLN:HE22	1.67	0.60
1:B:1162:TYR:CZ	1:B:1166:LYS:HD2	2.37	0.59
1:B:813:LEU:HD22	1:B:818:ASP:HB3	1.83	0.59
1:A:1139:VAL:HG13	1:A:1167:ILE:HD13	1.83	0.59
1:B:981:VAL:H	4:B:2279:EDO:H22	1.71	0.56
1:B:1190:ARG:NH2	1:B:1194:GLU:O	2.34	0.55
1:A:1161:LYS:NZ	1:A:1255:TYR:O	2.42	0.53
1:B:1248:MET:HG2	1:B:1252:ILE:HD11	1.90	0.53
4:B:2280:EDO:H11	6:B:3046:HOH:O	2.08	0.53
1:B:1024:ASN:HD22	3:B:2274:2HG:H3	1.73	0.53
1:B:811:ILE:HD13	1:B:824:LEU:HD13	1.91	0.53
1:B:805[A]:ASN:ND2	6:B:3005:HOH:O	2.16	0.51
1:B:1250:ASP:O	1:B:1254:VAL:HG23	2.11	0.50
1:B:1158:GLU:OE1	6:B:3229:HOH:O	2.19	0.50
1:B:996:GLY:HA2	1:B:1001:GLN:HG3	1.95	0.49
1:B:1152:SER:HB2	1:B:1263:SER:HB3	1.95	0.48
1:B:1173:THR:O	1:B:1176[A]:GLU:HG3	2.13	0.48
1:B:821:PHE:CD1	1:B:823:PRO:HD2	2.48	0.48
1:B:1089:ASN:OD1	4:B:2287:EDO:H11	2.14	0.48

Continued on next page...

Continued from previous page...

Atom-1	Atom-2	Interatomic distance (Å)	Clash overlap (Å)
1:B:1153:ASP:OD1	6:B:3225:HOH:O	2.18	0.48
1:A:1024:ASN:ND2	3:A:2267:2HG:H3A	2.30	0.47
1:A:813:LEU:HD22	1:A:818:ASP:HB3	1.98	0.46
4:B:2278:EDO:H11	6:B:3033:HOH:O	2.14	0.46
1:A:1146:ALA:HB2	1:A:1164:LEU:HD11	1.97	0.46
1:B:1194:GLU:HA	1:B:1195:PRO:HD3	1.84	0.45
1:A:1161:LYS:HE3	1:A:1255:TYR:CZ	2.52	0.45
1:B:1248:MET:O	1:B:1252:ILE:HG13	2.16	0.45
1:B:1112:LEU:O	1:B:1268:SER:HB2	2.17	0.45
1:B:1169[B]:LYS:HG3	1:B:1170[B]:GLN:N	2.32	0.45
1:A:1248:MET:O	1:A:1252:ILE:HG12	2.17	0.45
1:A:843:GLY:H	4:A:2272:EDO:C2	2.31	0.44
1:B:980:VAL:N	4:B:2279:EDO:H22	2.33	0.44
1:B:1024:ASN:ND2	3:B:2274:2HG:H3	2.33	0.43
1:A:1168:LEU:HD21	1:A:1252:ILE:HD13	2.00	0.43
1:B:1197:HIS:HE1	1:B:1245:GLN:HE22	1.65	0.42
1:B:1169[B]:LYS:NZ	1:B:1170[B]:GLN:OE1	2.53	0.42
1:A:1036:VAL:HB	1:A:1076:TYR:HB2	2.02	0.41
1:B:1139:VAL:HG13	1:B:1167:ILE:HD13	2.01	0.41
1:B:867:GLU:O	1:B:954[B]:THR:HG22	2.20	0.41
1:B:821:PHE:O	1:B:824:LEU:HB3	2.21	0.41
1:B:898:THR:OG1	1:B:902:LYS:HB3	2.21	0.40
1:B:1263:SER:OG	1:B:1265:SER:HB2	2.22	0.40
4:A:2279:EDO:H22	6:A:3126:HOH:O	2.22	0.40

All (1) symmetry-related close contacts are listed below. The label for Atom-2 includes the symmetry operator and encoded unit-cell translations to be applied.

Atom-1	Atom-2	Interatomic distance (Å)	Clash overlap (Å)
1:B:919:ASN:ND2	6:A:3008:HOH:O[3_454]	2.10	0.10

5.3 Torsion angles ⓘ

5.3.1 Protein backbone ⓘ

In the following table, the Percentiles column shows the percent Ramachandran outliers of the chain as a percentile score with respect to all X-ray entries followed by that with respect to entries of similar resolution.

The Analysed column shows the number of residues for which the backbone conformation was

analysed, and the total number of residues.

Mol	Chain	Analysed	Favoured	Allowed	Outliers	Percentiles	
1	A	445/478 (93%)	436 (98%)	9 (2%)	0	100	100
1	B	449/478 (94%)	436 (97%)	13 (3%)	0	100	100
All	All	894/956 (94%)	872 (98%)	22 (2%)	0	100	100

There are no Ramachandran outliers to report.

5.3.2 Protein sidechains ⓘ

In the following table, the Percentiles column shows the percent sidechain outliers of the chain as a percentile score with respect to all X-ray entries followed by that with respect to entries of similar resolution.

The Analysed column shows the number of residues for which the sidechain conformation was analysed, and the total number of residues.

Mol	Chain	Analysed	Rotameric	Outliers	Percentiles	
1	A	385/432 (89%)	380 (99%)	5 (1%)	76	79
1	B	393/432 (91%)	386 (98%)	7 (2%)	66	69
All	All	778/864 (90%)	766 (98%)	12 (2%)	76	75

All (12) residues with a non-rotameric sidechain are listed below:

Mol	Chain	Res	Type
1	A	808	THR
1	A	891[A]	CYS
1	A	891[B]	CYS
1	A	949	THR
1	A	952	PHE
1	B	881	ASP
1	B	893	SER
1	B	919	ASN
1	B	1176[A]	GLU
1	B	1176[B]	GLU
1	B	1192	ASN
1	B	1265	SER

Some sidechains can be flipped to improve hydrogen bonding and reduce clashes. All (1) such sidechains are listed below:

Mol	Chain	Res	Type
1	B	1197	HIS

5.3.3 RNA [i](#)

There are no RNA molecules in this entry.

5.4 Non-standard residues in protein, DNA, RNA chains [i](#)

There are no non-standard protein/DNA/RNA residues in this entry.

5.5 Carbohydrates [i](#)

There are no carbohydrates in this entry.

5.6 Ligand geometry [i](#)

Of 34 ligands modelled in this entry, 4 are monoatomic - leaving 30 for Mogul analysis.

In the following table, the Counts columns list the number of bonds (or angles) for which Mogul statistics could be retrieved, the number of bonds (or angles) that are observed in the model and the number of bonds (or angles) that are defined in the chemical component dictionary. The Link column lists molecule types, if any, to which the group is linked. The Z score for a bond length (or angle) is the number of standard deviations the observed value is removed from the expected value. A bond length (or angle) with $|Z| > 2$ is considered an outlier worth inspection. RMSZ is the root-mean-square of all Z scores of the bond lengths (or angles).

Mol	Type	Chain	Res	Link	Bond lengths			Bond angles		
					Counts	RMSZ	$\# Z > 2$	Counts	RMSZ	$\# Z > 2$
3	2HG	A	2267	2	3,9,9	0.29	0	5,11,11	1.10	1 (20%)
4	EDO	A	2268	-	3,3,3	0.42	0	2,2,2	0.53	0
4	EDO	A	2269	-	3,3,3	0.45	0	2,2,2	0.42	0
4	EDO	A	2270	-	3,3,3	0.44	0	2,2,2	0.39	0
4	EDO	A	2271	-	3,3,3	0.40	0	2,2,2	0.58	0
4	EDO	A	2272	-	3,3,3	0.53	0	2,2,2	0.33	0
4	EDO	A	2273	-	3,3,3	0.43	0	2,2,2	0.63	0
4	EDO	A	2274	-	3,3,3	0.38	0	2,2,2	0.60	0
4	EDO	A	2275	-	3,3,3	0.46	0	2,2,2	0.46	0
4	EDO	A	2276	-	3,3,3	0.46	0	2,2,2	0.59	0
4	EDO	A	2277	-	3,3,3	0.49	0	2,2,2	0.26	0
4	EDO	A	2278	-	3,3,3	0.50	0	2,2,2	0.86	0
4	EDO	A	2279	-	3,3,3	0.39	0	2,2,2	0.59	0
4	EDO	A	2280	-	3,3,3	0.42	0	2,2,2	0.39	0

Mol	Type	Chain	Res	Link	Bond lengths			Bond angles		
					Counts	RMSZ	# Z > 2	Counts	RMSZ	# Z > 2
4	EDO	A	2281	-	3,3,3	0.40	0	2,2,2	0.60	0
3	2HG	B	2274	2	3,9,9	0.12	0	5,11,11	1.59	1 (20%)
4	EDO	B	2275	-	3,3,3	0.49	0	2,2,2	0.38	0
4	EDO	B	2276	-	3,3,3	0.45	0	2,2,2	0.65	0
4	EDO	B	2277	-	3,3,3	0.49	0	2,2,2	0.38	0
4	EDO	B	2278	-	3,3,3	0.34	0	2,2,2	1.01	0
4	EDO	B	2279	-	3,3,3	0.44	0	2,2,2	0.35	0
4	EDO	B	2280	-	3,3,3	0.57	0	2,2,2	0.30	0
4	EDO	B	2281	-	3,3,3	0.42	0	2,2,2	0.42	0
4	EDO	B	2282	-	3,3,3	0.51	0	2,2,2	0.48	0
4	EDO	B	2283	-	3,3,3	0.44	0	2,2,2	0.81	0
4	EDO	B	2284	-	3,3,3	0.45	0	2,2,2	0.57	0
4	EDO	B	2285	-	3,3,3	0.47	0	2,2,2	0.43	0
4	EDO	B	2286	-	3,3,3	0.38	0	2,2,2	0.68	0
4	EDO	B	2287	-	3,3,3	0.38	0	2,2,2	0.81	0
4	EDO	B	2288	-	3,3,3	0.43	0	2,2,2	0.60	0

In the following table, the Chirals column lists the number of chiral outliers, the number of chiral centers analysed, the number of these observed in the model and the number defined in the chemical component dictionary. Similar counts are reported in the Torsion and Rings columns. '-' means no outliers of that kind were identified.

Mol	Type	Chain	Res	Link	Chirals	Torsions	Rings
3	2HG	A	2267	2	-	0/3/9/9	0/0/0/0
4	EDO	A	2268	-	-	0/1/1/1	0/0/0/0
4	EDO	A	2269	-	-	0/1/1/1	0/0/0/0
4	EDO	A	2270	-	-	0/1/1/1	0/0/0/0
4	EDO	A	2271	-	-	0/1/1/1	0/0/0/0
4	EDO	A	2272	-	-	0/1/1/1	0/0/0/0
4	EDO	A	2273	-	-	0/1/1/1	0/0/0/0
4	EDO	A	2274	-	-	0/1/1/1	0/0/0/0
4	EDO	A	2275	-	-	0/1/1/1	0/0/0/0
4	EDO	A	2276	-	-	0/1/1/1	0/0/0/0
4	EDO	A	2277	-	-	0/1/1/1	0/0/0/0
4	EDO	A	2278	-	-	0/1/1/1	0/0/0/0
4	EDO	A	2279	-	-	0/1/1/1	0/0/0/0
4	EDO	A	2280	-	-	0/1/1/1	0/0/0/0
4	EDO	A	2281	-	-	0/1/1/1	0/0/0/0
3	2HG	B	2274	2	-	0/3/9/9	0/0/0/0
4	EDO	B	2275	-	-	0/1/1/1	0/0/0/0
4	EDO	B	2276	-	-	0/1/1/1	0/0/0/0
4	EDO	B	2277	-	-	0/1/1/1	0/0/0/0

Continued on next page...

Continued from previous page...

Mol	Type	Chain	Res	Link	Chirals	Torsions	Rings
4	EDO	B	2278	-	-	0/1/1/1	0/0/0/0
4	EDO	B	2279	-	-	0/1/1/1	0/0/0/0
4	EDO	B	2280	-	-	0/1/1/1	0/0/0/0
4	EDO	B	2281	-	-	0/1/1/1	0/0/0/0
4	EDO	B	2282	-	-	0/1/1/1	0/0/0/0
4	EDO	B	2283	-	-	0/1/1/1	0/0/0/0
4	EDO	B	2284	-	-	0/1/1/1	0/0/0/0
4	EDO	B	2285	-	-	0/1/1/1	0/0/0/0
4	EDO	B	2286	-	-	0/1/1/1	0/0/0/0
4	EDO	B	2287	-	-	0/1/1/1	0/0/0/0
4	EDO	B	2288	-	-	0/1/1/1	0/0/0/0

There are no bond length outliers.

All (2) bond angle outliers are listed below:

Mol	Chain	Res	Type	Atoms	Z	Observed(°)	Ideal(°)
3	A	2267	2HG	C3-C2-C1	-2.09	106.47	112.26
3	B	2274	2HG	C4-C3-C2	3.37	118.71	114.74

There are no chirality outliers.

There are no torsion outliers.

There are no ring outliers.

11 monomers are involved in 14 short contacts:

Mol	Chain	Res	Type	Clashes	Symm-Clashes
3	A	2267	2HG	1	0
4	A	2272	EDO	1	0
4	A	2277	EDO	1	0
4	A	2279	EDO	1	0
4	A	2281	EDO	1	0
3	B	2274	2HG	2	0
4	B	2278	EDO	1	0
4	B	2279	EDO	2	0
4	B	2280	EDO	2	0
4	B	2281	EDO	1	0
4	B	2287	EDO	1	0

5.7 Other polymers

There are no such residues in this entry.

5.8 Polymer linkage issues ⓘ

There are no chain breaks in this entry.

6 Fit of model and data

6.1 Protein, DNA and RNA chains

In the following table, the column labelled ‘#RSRZ> 2’ contains the number (and percentage) of RSRZ outliers, followed by percent RSRZ outliers for the chain as percentile scores relative to all X-ray entries and entries of similar resolution. The OWAB column contains the minimum, median, 95th percentile and maximum values of the occupancy-weighted average B-factor per residue. The column labelled ‘Q< 0.9’ lists the number of (and percentage) of residues with an average occupancy less than 0.9.

Mol	Chain	Analysed	<RSRZ>	#RSRZ>2	OWAB(Å ²)	Q<0.9
1	A	444/478 (92%)	-0.13	5 (1%) 82 83	24, 35, 54, 79	0
1	B	446/478 (93%)	0.12	25 (5%) 28 29	25, 36, 61, 85	0
All	All	890/956 (93%)	-0.01	30 (3%) 49 50	24, 36, 59, 85	0

All (30) RSRZ outliers are listed below:

Mol	Chain	Res	Type	RSRZ
1	B	1179	VAL	6.6
1	B	946	PRO	4.4
1	B	821	PHE	4.2
1	B	1176[A]	GLU	4.0
1	B	1220	LYS	3.9
1	B	1272	LEU	3.5
1	B	1187	TRP	3.4
1	B	1267	SER	3.3
1	B	1192	ASN	3.2
1	B	822	PRO	3.1
1	B	1180	ALA	3.0
1	A	802	ASP	3.0
1	B	1178	LEU	2.8
1	B	1270	GLU	2.7
1	B	802	ASP	2.7
1	A	801	LYS	2.6
1	B	1182	GLY	2.6
1	B	1266	SER	2.6
1	B	947	PHE	2.5
1	B	1268	SER	2.4
1	B	1186	ILE	2.4
1	A	1223	ILE	2.4
1	B	819	ALA	2.3
1	B	1181	ALA	2.2

Continued on next page...

Continued from previous page...

Mol	Chain	Res	Type	RSRZ
1	B	1247	LYS	2.2
1	B	1172	GLN	2.1
1	B	1222	TYR	2.1
1	B	1221	THR	2.1
1	A	1180	ALA	2.1
1	A	1192	ASN	2.1

6.2 Non-standard residues in protein, DNA, RNA chains [i](#)

There are no non-standard protein/DNA/RNA residues in this entry.

6.3 Carbohydrates [i](#)

There are no carbohydrates in this entry.

6.4 Ligands [i](#)

In the following table, the Atoms column lists the number of modelled atoms in the group and the number defined in the chemical component dictionary. LLDF column lists the quality of electron density of the group with respect to its neighbouring residues in protein, DNA or RNA chains. The B-factors column lists the minimum, median, 95th percentile and maximum values of B factors of atoms in the group. The column labelled 'Q< 0.9' lists the number of atoms with occupancy less than 0.9.

Mol	Type	Chain	Res	Atoms	RSCC	RSR	LLDF	B-factors(Å ²)	Q<0.9
4	EDO	A	2272	4/4	0.89	0.28	15.43	25,28,43,48	0
4	EDO	A	2279	4/4	0.85	0.30	14.68	43,51,51,52	0
4	EDO	B	2279	4/4	0.91	0.30	12.59	38,41,45,48	0
4	EDO	A	2277	4/4	0.88	0.41	11.19	43,45,46,59	0
4	EDO	B	2283	4/4	0.85	0.21	8.44	43,51,55,56	0
4	EDO	B	2287	4/4	0.81	0.28	7.02	34,37,41,45	0
4	EDO	B	2284	4/4	0.78	0.39	6.24	45,51,53,54	0
4	EDO	B	2285	4/4	0.87	0.20	6.18	45,47,48,50	0
4	EDO	B	2281	4/4	0.91	0.19	5.28	29,45,51,59	0
4	EDO	A	2278	4/4	0.85	0.23	4.01	28,41,42,47	0
4	EDO	A	2276	4/4	0.92	0.15	3.61	34,39,41,44	0
4	EDO	B	2278	4/4	0.91	0.18	3.26	36,41,41,46	0
4	EDO	A	2268	4/4	0.96	0.14	2.71	30,35,36,44	0
3	2HG	A	2267	10/10	0.95	0.19	2.29	25,32,33,34	0
4	EDO	B	2282	4/4	0.92	0.18	1.89	27,36,40,42	0

Continued on next page...

Continued from previous page...

Mol	Type	Chain	Res	Atoms	RSCC	RSR	LLDF	B-factors(\AA^2)	Q<0.9
4	EDO	A	2274	4/4	0.98	0.12	1.08	28,28,30,31	0
4	EDO	B	2286	4/4	0.96	0.13	1.03	41,44,46,50	0
4	EDO	A	2271	4/4	0.93	0.16	0.95	41,46,48,57	0
4	EDO	B	2275	4/4	0.96	0.17	0.81	36,37,41,41	0
3	2HG	B	2274	10/10	0.95	0.14	0.18	29,30,37,39	0
4	EDO	A	2273	4/4	0.93	0.10	-0.45	38,40,42,48	0
4	EDO	A	2270	4/4	0.93	0.11	-0.70	41,48,56,57	0
5	ZN	B	4002	1/1	0.99	0.05	-1.30	31,31,31,31	0
5	ZN	A	4002	1/1	0.99	0.03	-2.21	35,35,35,35	0
4	EDO	B	2276	4/4	0.93	0.12	-	40,41,41,46	0
2	MN	A	2266	1/1	0.99	0.11	-	25,25,25,25	0
4	EDO	B	2288	4/4	0.89	0.15	-	32,35,42,44	0
2	MN	B	2273	1/1	0.99	0.11	-	27,27,27,27	0
4	EDO	A	2280	4/4	0.91	0.27	-	50,56,61,65	0
4	EDO	A	2269	4/4	0.93	0.13	-	39,40,41,51	0
4	EDO	A	2275	4/4	0.94	0.15	-	32,33,45,59	0
4	EDO	B	2277	4/4	0.92	0.12	-	34,41,45,48	0
4	EDO	B	2280	4/4	0.65	0.28	-	36,49,53,54	0
4	EDO	A	2281	4/4	0.93	0.34	-	47,51,53,55	0

6.5 Other polymers [i](#)

There are no such residues in this entry.