



Full wwPDB X-ray Structure Validation Report ⓘ

Feb 1, 2016 – 08:46 AM GMT

PDB ID : 3FZM
Title : Crystal Structures of Hsc70/Bag1 in Complex with Small Molecule Inhibitors
Authors : Dokurno, P.; Williamson, D.S.; Murray, J.B.; Surgenor, A.E.
Deposited on : 2009-01-26
Resolution : 2.30 Å(reported)

This is a Full wwPDB X-ray Structure Validation Report for a publicly released PDB entry.

We welcome your comments at validation@mail.wwpdb.org

A user guide is available at

<http://wwpdb.org/validation/2016/XrayValidationReportHelp>

with specific help available everywhere you see the ⓘ symbol.

The following versions of software and data (see [references ⓘ](#)) were used in the production of this report:

MolProbity : 4.02b-467
Mogul : 1.7 (RC4), CSD as536be (2015)
Xtriage (Phenix) : 1.9-1692
EDS : rb-20026688
Percentile statistics : 20151230.v01 (using entries in the PDB archive December 30th 2015)
Refmac : 5.8.0135
CCP4 : 6.5.0
Ideal geometry (proteins) : Engh & Huber (2001)
Ideal geometry (DNA, RNA) : Parkinson et al. (1996)
Validation Pipeline (wwPDB-VP) : trunk26865

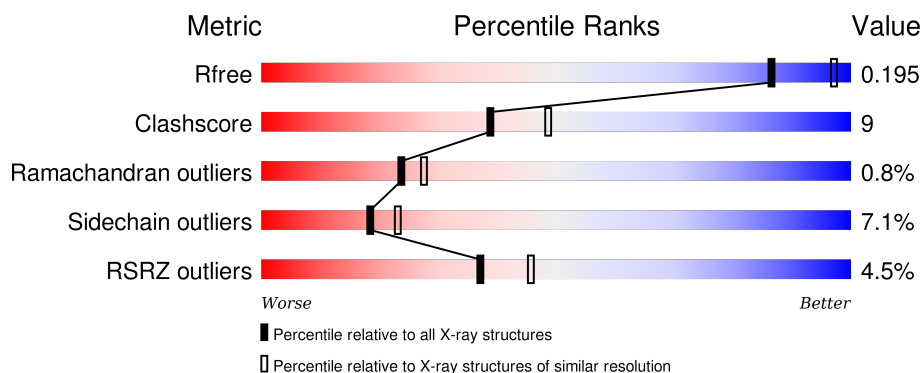
1 Overall quality at a glance

The following experimental techniques were used to determine the structure:

X-RAY DIFFRACTION

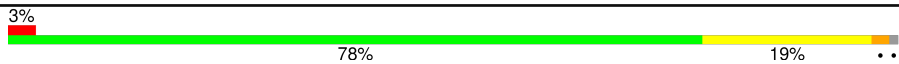
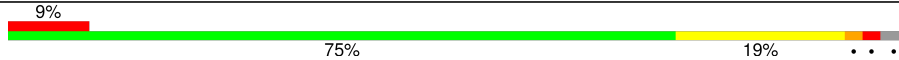
The reported resolution of this entry is 2.30 Å.

Percentile scores (ranging between 0-100) for global validation metrics of the entry are shown in the following graphic. The table shows the number of entries on which the scores are based.



Metric	Whole archive (#Entries)	Similar resolution (#Entries, resolution range(Å))
R_{free}	91344	3852 (2.30-2.30)
Clashscore	102246	4452 (2.30-2.30)
Ramachandran outliers	100387	4410 (2.30-2.30)
Sidechain outliers	100360	4409 (2.30-2.30)
RSRZ outliers	91569	3857 (2.30-2.30)

The table below summarises the geometric issues observed across the polymeric chains and their fit to the electron density. The red, orange, yellow and green segments on the lower bar indicate the fraction of residues that contain outliers for ≥ 3 , 2, 1 and 0 types of geometric quality criteria. A grey segment represents the fraction of residues that are not modelled. The numeric value for each fraction is indicated below the corresponding segment, with a dot representing fractions $\leq 5\%$. The upper red bar (where present) indicates the fraction of residues that have poor fit to the electron density. The numeric value is given above the bar.

Mol	Chain	Length	Quality of chain
1	A	381	 3% 78% 19% ..
2	B	114	 9% 75% 19% ...

The following table lists non-polymeric compounds, carbohydrate monomers and non-standard residues in protein, DNA, RNA chains that are outliers for geometric or electron-density-fit criteria:

Mol	Type	Chain	Res	Chirality	Geometry	Clashes	Electron density
3	3GO	A	401	-	-	-	X

2 Entry composition

There are 4 unique types of molecules in this entry. The entry contains 4155 atoms, of which 0 are hydrogens and 0 are deuteriums.

In the tables below, the ZeroOcc column contains the number of atoms modelled with zero occupancy, the AltConf column contains the number of residues with at least one atom in alternate conformation and the Trace column contains the number of residues modelled with at most 2 atoms.

- Molecule 1 is a protein called Heat shock cognate 71 kDa protein.

Mol	Chain	Residues	Atoms					ZeroOcc	AltConf	Trace
1	A	377	Total	C	N	O	S	0	0	0
			2913	1830	512	563	8			

There are 3 discrepancies between the modelled and reference sequences:

Chain	Residue	Modelled	Actual	Comment	Reference
A	1	TYR	-	EXPRESSION TAG	UNP P11142
A	2	PHE	-	EXPRESSION TAG	UNP P11142
A	3	GLN	-	EXPRESSION TAG	UNP P11142

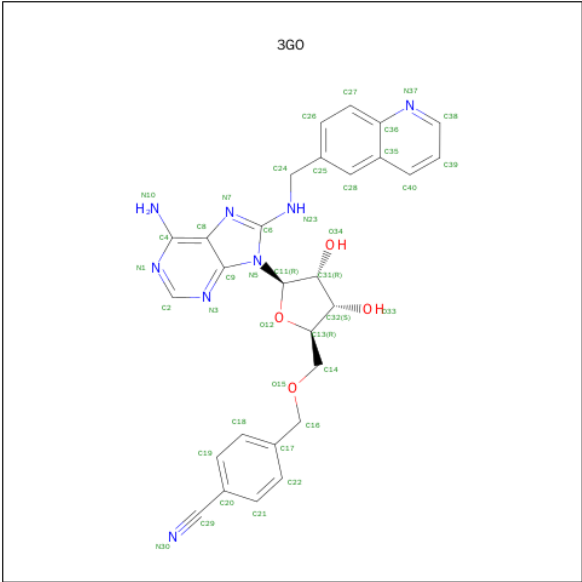
- Molecule 2 is a protein called BAG family molecular chaperone regulator 1.

Mol	Chain	Residues	Atoms					ZeroOcc	AltConf	Trace
2	B	111	Total	C	N	O	S	0	0	0
			890	561	152	173	4			

There is a discrepancy between the modelled and reference sequences:

Chain	Residue	Modelled	Actual	Comment	Reference
B	150	GLY	-	EXPRESSION TAG	UNP Q99933

- Molecule 3 is 4-[[[(2R,3S,4R,5R)-5-[6-AMINO-8-(QUINOLIN-6-YLMETHYLAMINO)PURIN-9-YL]-3,4-DIHYDROXY-OXOLAN-2-YL]METHOXYMETHYL]BENZONITRILE (three-letter code: 3GO) (formula: C₂₈H₂₆N₈O₄).



Mol	Chain	Residues	Atoms				ZeroOcc	AltConf
3	A	1	Total	C	N	O	0	0
			40	28	8	4		

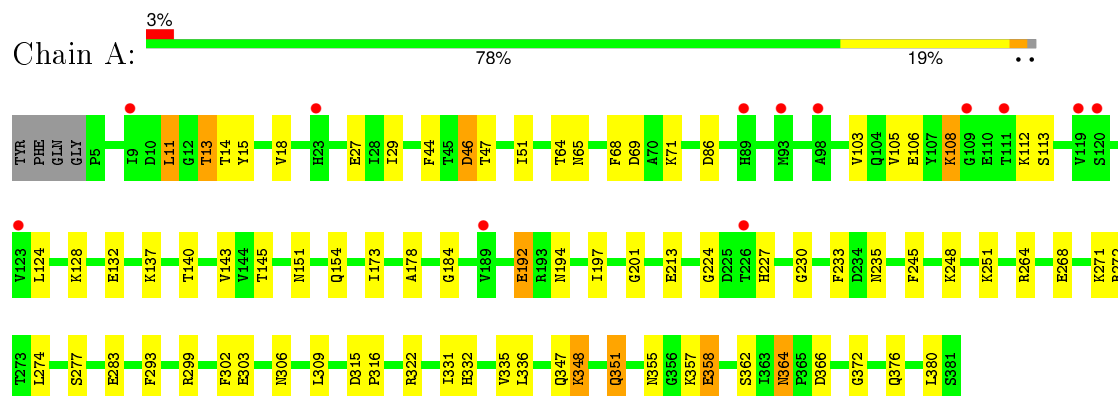
- Molecule 4 is water.

Mol	Chain	Residues	Atoms		ZeroOcc	AltConf
4	A	244	Total	O	0	0
			244	244		
4	B	68	Total	O	0	0
			68	68		

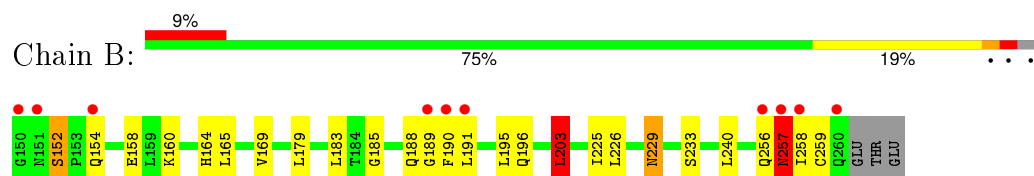
3 Residue-property plots [i](#)

These plots are drawn for all protein, RNA and DNA chains in the entry. The first graphic for a chain summarises the proportions of errors displayed in the second graphic. The second graphic shows the sequence view annotated by issues in geometry and electron density. Residues are color-coded according to the number of geometric quality criteria for which they contain at least one outlier: green = 0, yellow = 1, orange = 2 and red = 3 or more. A red dot above a residue indicates a poor fit to the electron density ($\text{RSRZ} > 2$). Stretches of 2 or more consecutive residues without any outlier are shown as a green connector. Residues present in the sample, but not in the model, are shown in grey.

- Molecule 1: Heat shock cognate 71 kDa protein



- Molecule 2: BAG family molecular chaperone regulator 1



4 Data and refinement statistics

Property	Value	Source
Space group	P 1 21 1	Depositor
Cell constants a, b, c, α , β , γ	40.75Å 121.38Å 53.95Å 90.00° 106.60° 90.00°	Depositor
Resolution (Å)	24.59 – 2.30 23.96 – 2.30	Depositor EDS
% Data completeness (in resolution range)	97.1 (24.59-2.30) 97.1 (23.96-2.30)	Depositor EDS
R_{merge}	0.07	Depositor
R_{sym}	(Not available)	Depositor
$\langle I/\sigma(I) \rangle$ ¹	3.40 (at 2.31Å)	Xtriage
Refinement program	REFMAC 5.2.0019	Depositor
R, R_{free}	0.200 , 0.254 0.202 , 0.195	Depositor DCC
R_{free} test set	1661 reflections (8.31%)	DCC
Wilson B-factor (Å ²)	44.0	Xtriage
Anisotropy	0.064	Xtriage
Bulk solvent k_{sol} (e/Å ³), B_{sol} (Å ²)	0.30 , 35.5	EDS
Estimated twinning fraction	No twinning to report.	Xtriage
L-test for twinning ²	$\langle L \rangle = 0.48$, $\langle L^2 \rangle = 0.31$	Xtriage
Outliers	0 of 21650 reflections	Xtriage
F_o, F_c correlation	0.95	EDS
Total number of atoms	4155	wwPDB-VP
Average B, all atoms (Å ²)	43.0	wwPDB-VP

Xtriage's analysis on translational NCS is as follows: *The largest off-origin peak in the Patterson function is 6.96% of the height of the origin peak. No significant pseudotranslation is detected.*

¹Intensities estimated from amplitudes.

²Theoretical values of $\langle |L| \rangle$, $\langle L^2 \rangle$ for acentric reflections are 0.5, 0.375 respectively for untwinned datasets, and 0.333, 0.2 for perfectly twinned datasets.

5 Model quality [i](#)

5.1 Standard geometry [i](#)

Bond lengths and bond angles in the following residue types are not validated in this section: 3GO

The Z score for a bond length (or angle) is the number of standard deviations the observed value is removed from the expected value. A bond length (or angle) with $|Z| > 5$ is considered an outlier worth inspection. RMSZ is the root-mean-square of all Z scores of the bond lengths (or angles).

Mol	Chain	Bond lengths		Bond angles	
		RMSZ	$\# Z > 5$	RMSZ	$\# Z > 5$
1	A	0.55	0/2959	0.67	0/3997
2	B	0.56	0/897	0.65	1/1200 (0.1%)
All	All	0.56	0/3856	0.67	1/5197 (0.0%)

There are no bond length outliers.

All (1) bond angle outliers are listed below:

Mol	Chain	Res	Type	Atoms	Z	Observed(°)	Ideal(°)
2	B	203	LEU	CA-CB-CG	5.69	128.39	115.30

There are no chirality outliers.

There are no planarity outliers.

5.2 Too-close contacts [i](#)

In the following table, the Non-H and H(model) columns list the number of non-hydrogen atoms and hydrogen atoms in the chain respectively. The H(added) column lists the number of hydrogen atoms added and optimized by MolProbity. The Clashes column lists the number of clashes within the asymmetric unit, whereas Symm-Clashes lists symmetry related clashes.

Mol	Chain	Non-H	H(model)	H(added)	Clashes	Symm-Clashes
1	A	2913	0	2912	54	0
2	B	890	0	923	14	0
3	A	40	0	26	3	0
4	A	244	0	0	11	0
4	B	68	0	0	3	0
All	All	4155	0	3861	69	0

The all-atom clashscore is defined as the number of clashes found per 1000 atoms (including

hydrogen atoms). The all-atom clashscore for this structure is 9.

All (69) close contacts within the same asymmetric unit are listed below, sorted by their clash magnitude.

Atom-1	Atom-2	Interatomic distance (Å)	Clash overlap (Å)
1:A:194:ASN:H	1:A:332:HIS:HD2	1.22	0.88
1:A:194:ASN:H	1:A:332:HIS:CD2	1.95	0.84
1:A:351:GLN:HE22	1:A:358:GLU:H	1.36	0.73
2:B:185:GLY:HA3	4:B:299:HOH:O	1.88	0.73
1:A:51:ILE:CD1	4:A:618:HOH:O	2.40	0.70
1:A:351:GLN:NE2	1:A:358:GLU:H	1.93	0.66
3:A:401:3GO:H40	4:A:588:HOH:O	1.97	0.64
1:A:46:ASP:O	1:A:108:LYS:HB3	1.98	0.62
2:B:226:LEU:HD13	2:B:233:SER:HB3	1.82	0.61
1:A:299:ARG:O	1:A:303:GLU:HG3	2.02	0.60
1:A:51:ILE:HD13	4:A:618:HOH:O	2.01	0.59
1:A:143:VAL:HG11	1:A:173:ILE:HD12	1.84	0.59
1:A:151:ASN:H	1:A:154:GLN:HE21	1.51	0.59
1:A:11:LEU:HG	1:A:124:LEU:HD21	1.83	0.58
2:B:188:GLN:O	2:B:190:PHE:N	2.36	0.58
1:A:197:ILE:HD13	1:A:335:VAL:HB	1.85	0.57
1:A:178:ALA:O	1:A:372:GLY:HA3	2.04	0.57
1:A:364:ASN:HD22	1:A:366:ASP:H	1.52	0.56
1:A:351:GLN:HE21	1:A:351:GLN:HA	1.70	0.56
3:A:401:3GO:H31	4:A:588:HOH:O	2.05	0.55
1:A:86:ASP:OD1	1:A:227:HIS:HE1	1.90	0.55
1:A:274:LEU:O	1:A:299:ARG:HD2	2.07	0.55
2:B:183:LEU:HD11	2:B:258:ILE:HG21	1.88	0.53
1:A:46:ASP:HB2	4:A:595:HOH:O	2.07	0.53
1:A:348:LYS:HE3	4:A:605:HOH:O	2.09	0.52
1:A:306:ASN:HD22	1:A:309:LEU:HD12	1.73	0.52
1:A:151:ASN:H	1:A:154:GLN:NE2	2.09	0.51
1:A:103:VAL:O	1:A:113:SER:HA	2.11	0.51
1:A:47:THR:O	4:A:624:HOH:O	2.19	0.51
1:A:233:PHE:HA	1:A:306:ASN:HD21	1.76	0.50
1:A:145:THR:HA	1:A:173:ILE:O	2.11	0.49
1:A:245:PHE:HD1	1:A:293:PHE:CD1	2.31	0.49
1:A:283:GLU:HG3	2:B:225:ILE:HD13	1.94	0.49
2:B:152:SER:HB2	2:B:154:GLN:OE1	2.13	0.49
2:B:256:GLN:O	2:B:257:ASN:HB2	2.11	0.49
2:B:259:CYS:HA	4:B:140:HOH:O	2.12	0.48
2:B:229:ASN:H	2:B:229:ASN:ND2	2.10	0.48
1:A:65:ASN:HD21	1:A:106:GLU:H	1.60	0.48

Continued on next page...

Continued from previous page...

Atom-1	Atom-2	Interatomic distance (Å)	Clash overlap (Å)
1:A:230:GLY:HA2	1:A:233:PHE:CD2	2.49	0.48
1:A:14:THR:HG22	1:A:15:TYR:CD1	2.49	0.48
2:B:158:GLU:HA	2:B:158:GLU:OE1	2.15	0.47
2:B:183:LEU:HA	2:B:203:LEU:HD21	1.96	0.47
1:A:357:LYS:O	1:A:358:GLU:CB	2.63	0.47
1:A:351:GLN:HE22	1:A:358:GLU:N	2.07	0.46
1:A:272:ARG:HG2	3:A:401:3GO:C8	2.46	0.45
1:A:201:GLY:HA3	4:A:579:HOH:O	2.17	0.45
1:A:347:GLN:O	1:A:351:GLN:HB2	2.16	0.45
1:A:364:ASN:HD22	1:A:364:ASN:C	2.19	0.45
1:A:13:THR:HG23	1:A:71:LYS:HB3	1.98	0.44
1:A:264:ARG:HD3	4:A:608:HOH:O	2.17	0.44
1:A:105:VAL:O	1:A:112:LYS:N	2.51	0.43
1:A:364:ASN:ND2	1:A:366:ASP:H	2.15	0.43
1:A:128:LYS:O	1:A:132:GLU:HG3	2.18	0.43
2:B:169:VAL:HG21	2:B:240:LEU:HD11	2.00	0.43
1:A:173:ILE:CD1	1:A:376:GLN:HG2	2.48	0.43
2:B:164:HIS:HD2	4:B:16:HOH:O	2.02	0.43
1:A:271:LYS:HG3	1:A:302:PHE:CZ	2.54	0.42
1:A:224:GLY:HA2	1:A:316:PRO:HB3	2.02	0.42
1:A:315:ASP:HB2	1:A:316:PRO:HD3	2.01	0.42
1:A:336:LEU:HD11	1:A:347:GLN:HG2	2.02	0.42
1:A:173:ILE:HD13	1:A:376:GLN:HG2	2.02	0.41
1:A:68:PHE:O	1:A:69:ASP:HB2	2.18	0.41
1:A:27:GLU:HG3	4:A:508:HOH:O	2.19	0.41
1:A:18:VAL:HG13	1:A:29:ILE:HB	2.03	0.41
1:A:14:THR:HG22	1:A:15:TYR:CE1	2.56	0.41
1:A:184:GLY:HA2	4:A:551:HOH:O	2.21	0.41
1:A:44:PHE:CD1	1:A:105:VAL:HG21	2.56	0.40
2:B:165:LEU:O	2:B:169:VAL:HG23	2.22	0.40
1:A:192:GLU:HB2	1:A:213:GLU:HB2	2.03	0.40

There are no symmetry-related clashes.

5.3 Torsion angles [i](#)

5.3.1 Protein backbone [i](#)

In the following table, the Percentiles column shows the percent Ramachandran outliers of the chain as a percentile score with respect to all X-ray entries followed by that with respect to entries of similar resolution.

The Analysed column shows the number of residues for which the backbone conformation was analysed, and the total number of residues.

Mol	Chain	Analysed	Favoured	Allowed	Outliers	Percentiles	
1	A	375/381 (98%)	355 (95%)	18 (5%)	2 (0%)	34	41
2	B	109/114 (96%)	103 (94%)	4 (4%)	2 (2%)	11	9
All	All	484/495 (98%)	458 (95%)	22 (4%)	4 (1%)	24	27

All (4) Ramachandran outliers are listed below:

Mol	Chain	Res	Type
2	B	257	ASN
1	A	355	ASN
2	B	189	GLY
1	A	358	GLU

5.3.2 Protein sidechains ⓘ

In the following table, the Percentiles column shows the percent sidechain outliers of the chain as a percentile score with respect to all X-ray entries followed by that with respect to entries of similar resolution.

The Analysed column shows the number of residues for which the sidechain conformation was analysed, and the total number of residues.

Mol	Chain	Analysed	Rotameric	Outliers	Percentiles	
1	A	310/316 (98%)	290 (94%)	20 (6%)	21	27
2	B	100/104 (96%)	91 (91%)	9 (9%)	12	14
All	All	410/420 (98%)	381 (93%)	29 (7%)	18	23

All (29) residues with a non-rotameric sidechain are listed below:

Mol	Chain	Res	Type
1	A	11	LEU
1	A	13	THR
1	A	46	ASP
1	A	64	THR
1	A	108	LYS
1	A	137	LYS
1	A	140	THR
1	A	192	GLU
1	A	235	ASN

Continued on next page...

Continued from previous page...

Mol	Chain	Res	Type
1	A	248	LYS
1	A	251	LYS
1	A	268	GLU
1	A	277	SER
1	A	322	ARG
1	A	331	ILE
1	A	348	LYS
1	A	351	GLN
1	A	362	SER
1	A	364	ASN
1	A	380	LEU
2	B	152	SER
2	B	160	LYS
2	B	179	LEU
2	B	191	LEU
2	B	195	LEU
2	B	196	GLN
2	B	203	LEU
2	B	229	ASN
2	B	257	ASN

Some sidechains can be flipped to improve hydrogen bonding and reduce clashes. All (11) such sidechains are listed below:

Mol	Chain	Res	Type
1	A	65	ASN
1	A	154	GLN
1	A	227	HIS
1	A	239	ASN
1	A	279	GLN
1	A	306	ASN
1	A	332	HIS
1	A	351	GLN
1	A	364	ASN
1	A	376	GLN
2	B	229	ASN

5.3.3 RNA ⓘ

There are no RNA molecules in this entry.

5.4 Non-standard residues in protein, DNA, RNA chains [i](#)

There are no non-standard protein/DNA/RNA residues in this entry.

5.5 Carbohydrates [i](#)

There are no carbohydrates in this entry.

5.6 Ligand geometry [i](#)

1 ligand is modelled in this entry.

In the following table, the Counts columns list the number of bonds (or angles) for which Mogul statistics could be retrieved, the number of bonds (or angles) that are observed in the model and the number of bonds (or angles) that are defined in the chemical component dictionary. The Link column lists molecule types, if any, to which the group is linked. The Z score for a bond length (or angle) is the number of standard deviations the observed value is removed from the expected value. A bond length (or angle) with $|Z| > 2$ is considered an outlier worth inspection. RMSZ is the root-mean-square of all Z scores of the bond lengths (or angles).

Mol	Type	Chain	Res	Link	Bond lengths			Bond angles		
					Counts	RMSZ	$\# Z > 2$	Counts	RMSZ	$\# Z > 2$
3	3GO	A	401	-	39,45,45	1.26	3 (7%)	45,64,64	2.02	5 (11%)

In the following table, the Chirals column lists the number of chiral outliers, the number of chiral centers analysed, the number of these observed in the model and the number defined in the chemical component dictionary. Similar counts are reported in the Torsion and Rings columns. '-' means no outliers of that kind were identified.

Mol	Type	Chain	Res	Link	Chirals	Torsions	Rings
3	3GO	A	401	-	-	0/11/33/33	0/6/6/6

All (3) bond length outliers are listed below:

Mol	Chain	Res	Type	Atoms	Z	Observed(Å)	Ideal(Å)
3	A	401	3GO	C8-N7	-4.14	1.33	1.38
3	A	401	3GO	O12-C13	2.32	1.50	1.45
3	A	401	3GO	C2-N1	2.85	1.39	1.33

All (5) bond angle outliers are listed below:

Mol	Chain	Res	Type	Atoms	Z	Observed(°)	Ideal(°)
3	A	401	3GO	N3-C2-N1	-11.05	120.43	128.89

Continued on next page...

Continued from previous page...

Mol	Chain	Res	Type	Atoms	Z	Observed(°)	Ideal(°)
3	A	401	3GO	C13-O12-C11	-3.83	105.50	109.72
3	A	401	3GO	C39-C38-N37	-2.15	120.58	123.94
3	A	401	3GO	C38-N37-C36	2.40	120.95	116.87
3	A	401	3GO	O15-C16-C17	2.92	119.99	110.75

There are no chirality outliers.

There are no torsion outliers.

There are no ring outliers.

1 monomer is involved in 3 short contacts:

Mol	Chain	Res	Type	Clashes	Symm-Clashes
3	A	401	3GO	3	0

5.7 Other polymers [i](#)

There are no such residues in this entry.

5.8 Polymer linkage issues [i](#)

There are no chain breaks in this entry.

6 Fit of model and data ⓘ

6.1 Protein, DNA and RNA chains ⓘ

In the following table, the column labelled ‘#RSRZ> 2’ contains the number (and percentage) of RSRZ outliers, followed by percent RSRZ outliers for the chain as percentile scores relative to all X-ray entries and entries of similar resolution. The OWAB column contains the minimum, median, 95th percentile and maximum values of the occupancy-weighted average B-factor per residue. The column labelled ‘Q< 0.9’ lists the number of (and percentage) of residues with an average occupancy less than 0.9.

Mol	Chain	Analysed	<RSRZ>	#RSRZ>2	OWAB(Å ²)	Q<0.9
1	A	377/381 (98%)	0.26	12 (3%) 51 60	29, 40, 58, 71	3 (0%)
2	B	111/114 (97%)	0.42	10 (9%) 12 17	30, 45, 70, 74	1 (0%)
All	All	488/495 (98%)	0.30	22 (4%) 37 46	29, 41, 61, 74	4 (0%)

All (22) RSRZ outliers are listed below:

Mol	Chain	Res	Type	RSRZ
1	A	109	GLY	6.1
2	B	150	GLY	5.8
2	B	190	PHE	5.0
1	A	123	VAL	4.3
1	A	189	VAL	4.0
2	B	189	GLY	3.9
1	A	98	ALA	3.8
2	B	256	GLN	3.6
1	A	111	THR	3.5
2	B	260	GLN	3.1
2	B	191	LEU	3.1
1	A	89	HIS	3.1
1	A	119	VAL	3.1
1	A	9	ILE	3.1
1	A	120	SER	2.9
2	B	154	GLN	2.6
2	B	257	ASN	2.5
2	B	258	ILE	2.3
1	A	23	HIS	2.2
1	A	226	THR	2.1
2	B	151	ASN	2.0
1	A	93	MET	2.0

6.2 Non-standard residues in protein, DNA, RNA chains [i](#)

There are no non-standard protein/DNA/RNA residues in this entry.

6.3 Carbohydrates [i](#)

There are no carbohydrates in this entry.

6.4 Ligands [i](#)

In the following table, the Atoms column lists the number of modelled atoms in the group and the number defined in the chemical component dictionary. LLDF column lists the quality of electron density of the group with respect to its neighbouring residues in protein, DNA or RNA chains. The B-factors column lists the minimum, median, 95th percentile and maximum values of B factors of atoms in the group. The column labelled 'Q< 0.9' lists the number of atoms with occupancy less than 0.9.

Mol	Type	Chain	Res	Atoms	RSCC	RSR	LLDF	B-factors(\AA^2)	Q<0.9
3	3GO	A	401	40/40	0.84	0.25	4.14	42,46,48,48	40

6.5 Other polymers [i](#)

There are no such residues in this entry.