



Full wwPDB X-ray Structure Validation Report ⓘ

Feb 9, 2017 – 12:32 PM EST

PDB ID : 5G3J
Title : Discovery of New Selective Glucocorticoid Receptor Agonist Leads
Authors : Berger, M.; Edman, K.; Wissler, L.; Neuhaus, R.; Rehwinkel, H.; Schacke, H.; Jaroch, S.
Deposited on : 2016-04-27
Resolution : 2.40 Å(reported)

This is a Full wwPDB X-ray Structure Validation Report for a publicly released PDB entry.

We welcome your comments at validation@mail.wwpdb.org

A user guide is available at

<http://wwpdb.org/validation/2016/XrayValidationReportHelp>

with specific help available everywhere you see the ⓘ symbol.

The following versions of software and data (see [references ⓘ](#)) were used in the production of this report:

MolProbity : 4.02b-467
Mogul : 1.7.1 (RC1), CSD as537be (2016)
Xtriage (Phenix) : 1.9-1692
EDS : rb-20028442
Percentile statistics : 20151230.v01 (using entries in the PDB archive December 30th 2015)
Refmac : 5.8.0135
CCP4 : 6.5.0
Ideal geometry (proteins) : Engh & Huber (2001)
Ideal geometry (DNA, RNA) : Parkinson et al. (1996)
Validation Pipeline (wwPDB-VP) : rb-20028442

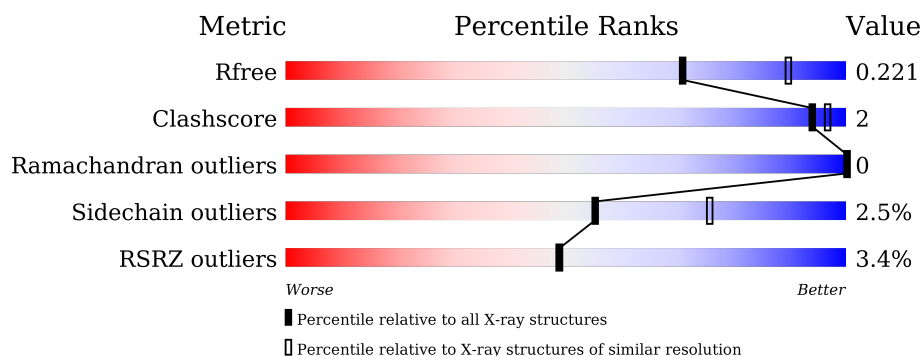
1 Overall quality at a glance

The following experimental techniques were used to determine the structure:

X-RAY DIFFRACTION

The reported resolution of this entry is 2.40 Å.

Percentile scores (ranging between 0-100) for global validation metrics of the entry are shown in the following graphic. The table shows the number of entries on which the scores are based.



Metric	Whole archive (#Entries)	Similar resolution (#Entries, resolution range(Å))
R_{free}	91344	2919 (2.40-2.40)
Clashscore	102246	3407 (2.40-2.40)
Ramachandran outliers	100387	3351 (2.40-2.40)
Sidechain outliers	100360	3352 (2.40-2.40)
RSRZ outliers	91569	2928 (2.40-2.40)

The table below summarises the geometric issues observed across the polymeric chains and their fit to the electron density. The red, orange, yellow and green segments on the lower bar indicate the fraction of residues that contain outliers for ≥ 3 , 2, 1 and 0 types of geometric quality criteria. A grey segment represents the fraction of residues that are not modelled. The numeric value for each fraction is indicated below the corresponding segment, with a dot representing fractions $\leq 5\%$. The upper red bar (where present) indicates the fraction of residues that have poor fit to the electron density. The numeric value is given above the bar.

Mol	Chain	Length	Quality of chain
1	A	280	<div> <div>3%</div> <div> <div></div> <div>83%</div> <div>6%</div> <div>11%</div> </div> </div>
2	B	14	<div> <div></div> <div>86%</div> <div>7%</div> <div>7%</div> </div>

2 Entry composition

There are 6 unique types of molecules in this entry. The entry contains 2279 atoms, of which 0 are hydrogens and 0 are deuteriums.

In the tables below, the ZeroOcc column contains the number of atoms modelled with zero occupancy, the AltConf column contains the number of residues with at least one atom in alternate conformation and the Trace column contains the number of residues modelled with at most 2 atoms.

- Molecule 1 is a protein called GLUCOCORTICOID RECEPTOR.

Mol	Chain	Residues	Atoms					ZeroOcc	AltConf	Trace
1	A	248	Total	C	N	O	S	0	0	0
			2023	1301	332	372	18			

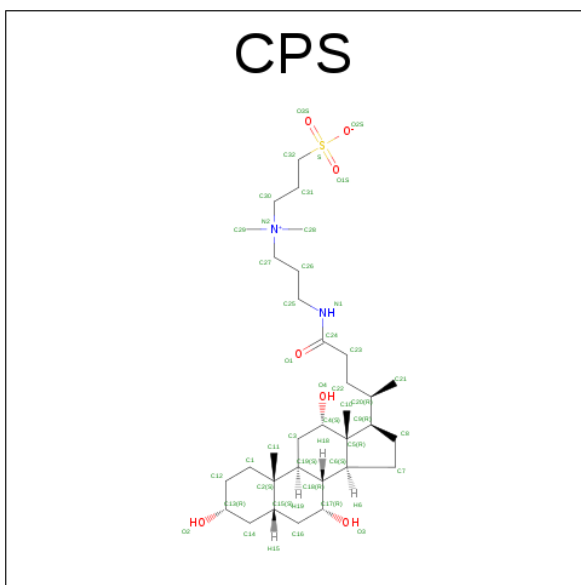
There are 6 discrepancies between the modelled and reference sequences:

Chain	Residue	Modelled	Actual	Comment	Reference
A	498	GLY	-	EXPRESSION TAG	UNP P04150
A	499	SER	-	EXPRESSION TAG	UNP P04150
A	517	ASP	ASN	ENGINEERED MUTATION	UNP P04150
A	571	MET	VAL	ENGINEERED MUTATION	UNP P04150
A	602	SER	PHE	ENGINEERED MUTATION	UNP P04150
A	638	ASP	CYS	ENGINEERED MUTATION	UNP P04150

- Molecule 2 is a protein called NUCLEAR RECEPTOR COACTIVATOR 2.

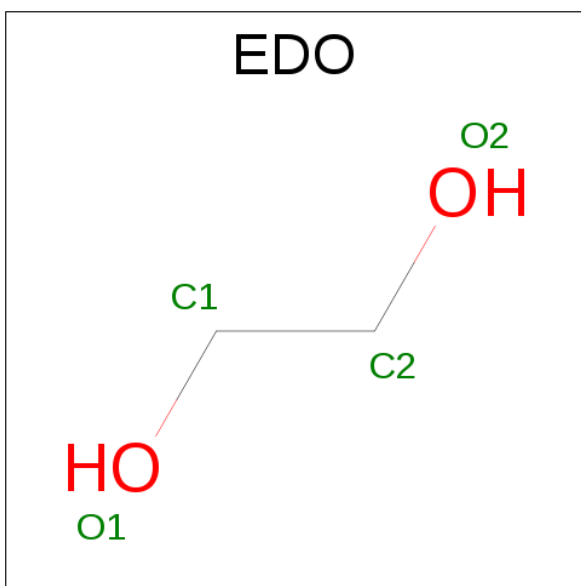
Mol	Chain	Residues	Atoms				ZeroOcc	AltConf	Trace
2	B	13	Total	C	N	O	0	0	0
			111	69	18	24			

- Molecule 3 is 3-[(3-CHOLAMIDOPROPYL)DIMETHYLAMMONIO]-1-PROPANESULFONATE (three-letter code: CPS) (formula: C₃₂H₅₈N₂O₇S).



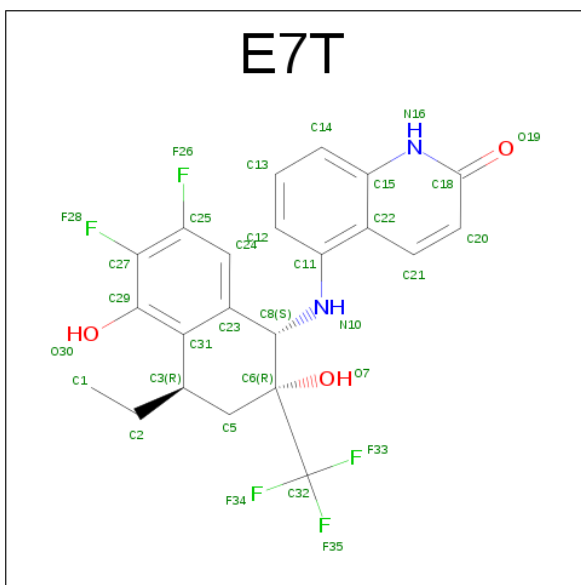
Mol	Chain	Residues	Atoms				ZeroOcc	AltConf
3	A	1	Total	C	N	O	0	0
			36	30	2	4		

- Molecule 4 is 1,2-ETHANEDIOL (three-letter code: EDO) (formula: C₂H₆O₂).



Mol	Chain	Residues	Atoms			ZeroOcc	AltConf
4	A	1	Total	C	O	0	0
			4	2	2		

- Molecule 5 is 5-[[[(1S,2R,4R)-4-ETHYL-6,7-BIS(FLUORANYL)-2,5-BIS(OXIDANYL)-2-(TRIFLUOROMETHYL)-3,4-DIHYDRO-1H-NAPHTHALEN-1-YL]AMINO]-1H-QUINOLIN-2-ONE (three-letter code: E7T) (formula: C₂₂H₁₉F₅N₂O₃).

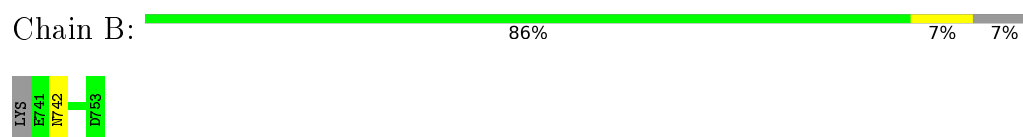


Mol	Chain	Residues	Atoms					ZeroOcc	AltConf
5	A	1	Total	C	F	N	O	0	0
			32	22	5	2	3		

- Molecule 6 is water.

Mol	Chain	Residues	Atoms		ZeroOcc	AltConf
6	A	70	Total	O	0	0
			70	70		
6	B	3	Total	O	0	0
			3	3		

- Molecule 1: GLUCOCORTICOID RECEPTOR



4 Data and refinement statistics

Property	Value	Source
Space group	P 32 2 1	Depositor
Cell constants a, b, c, α , β , γ	84.26 Å 84.26 Å 106.68 Å 90.00° 90.00° 120.00°	Depositor
Resolution (Å)	43.06 – 2.40 43.06 – 2.40	Depositor EDS
% Data completeness (in resolution range)	96.5 (43.06-2.40) 94.4 (43.06-2.40)	Depositor EDS
R_{merge}	0.07	Depositor
R_{sym}	(Not available)	Depositor
$\langle I/\sigma(I) \rangle$ ¹	4.35 (at 2.39 Å)	Xtriage
Refinement program	BUSTER 2.11.6	Depositor
R, R_{free}	0.197 , 0.235 0.187 , 0.221	Depositor DCC
R_{free} test set	830 reflections (5.25%)	DCC
Wilson B-factor (Å ²)	38.9	Xtriage
Anisotropy	0.441	Xtriage
Bulk solvent k_{sol} (e/Å ³), B_{sol} (Å ²)	0.36 , 44.4	EDS
L-test for twinning ²	$\langle L \rangle = 0.48$, $\langle L^2 \rangle = 0.31$	Xtriage
Estimated twinning fraction	0.036 for -h,-k,l	Xtriage
F_o, F_c correlation	0.94	EDS
Total number of atoms	2279	wwPDB-VP
Average B, all atoms (Å ²)	52.0	wwPDB-VP

Xtriage's analysis on translational NCS is as follows: *The largest off-origin peak in the Patterson function is 4.52% of the height of the origin peak. No significant pseudotranslation is detected.*

¹Intensities estimated from amplitudes.

²Theoretical values of $\langle |L| \rangle$, $\langle L^2 \rangle$ for acentric reflections are 0.5, 0.333 respectively for untwinned datasets, and 0.375, 0.2 for perfectly twinned datasets.

5 Model quality

5.1 Standard geometry

Bond lengths and bond angles in the following residue types are not validated in this section: CPS, EDO, E7T

The Z score for a bond length (or angle) is the number of standard deviations the observed value is removed from the expected value. A bond length (or angle) with $|Z| > 5$ is considered an outlier worth inspection. RMSZ is the root-mean-square of all Z scores of the bond lengths (or angles).

Mol	Chain	Bond lengths		Bond angles	
		RMSZ	$\# Z > 5$	RMSZ	$\# Z > 5$
1	A	0.47	0/2067	0.59	0/2795
2	B	0.49	0/111	0.63	0/147
All	All	0.47	0/2178	0.59	0/2942

There are no bond length outliers.

There are no bond angle outliers.

There are no chirality outliers.

There are no planarity outliers.

5.2 Too-close contacts

In the following table, the Non-H and H(model) columns list the number of non-hydrogen atoms and hydrogen atoms in the chain respectively. The H(added) column lists the number of hydrogen atoms added and optimized by MolProbity. The Clashes column lists the number of clashes within the asymmetric unit, whereas Symm-Clashes lists symmetry related clashes.

Mol	Chain	Non-H	H(model)	H(added)	Clashes	Symm-Clashes
1	A	2023	0	2034	8	0
2	B	111	0	107	1	0
3	A	36	0	52	0	0
4	A	4	0	6	1	0
5	A	32	0	0	0	0
6	A	70	0	0	0	0
6	B	3	0	0	0	0
All	All	2279	0	2199	8	0

The all-atom clashscore is defined as the number of clashes found per 1000 atoms (including hydrogen atoms). The all-atom clashscore for this structure is 2.

All (8) close contacts within the same asymmetric unit are listed below, sorted by their clash magnitude.

Atom-1	Atom-2	Interatomic distance (Å)	Clash overlap (Å)
1:A:739:THR:HG22	1:A:745:MET:HE1	1.77	0.67
1:A:759:ASN:HB2	2:B:742:ASN:HD21	1.64	0.62
1:A:623:PHE:CE2	1:A:629:ILE:HD12	2.43	0.54
1:A:603:LEU:HB3	4:A:1778:EDO:H22	1.90	0.53
1:A:739:THR:HG22	1:A:745:MET:CE	2.38	0.53
1:A:710:GLN:HA	1:A:713:GLN:HG2	1.91	0.53
1:A:620:LEU:HD22	1:A:630:ASN:HA	1.94	0.50
1:A:659:SER:HB3	1:A:704:ARG:HH21	1.79	0.47

There are no symmetry-related clashes.

5.3 Torsion angles ⓘ

5.3.1 Protein backbone ⓘ

In the following table, the Percentiles column shows the percent Ramachandran outliers of the chain as a percentile score with respect to all X-ray entries followed by that with respect to entries of similar resolution.

The Analysed column shows the number of residues for which the backbone conformation was analysed, and the total number of residues.

Mol	Chain	Analysed	Favoured	Allowed	Outliers	Percentiles	
1	A	246/280 (88%)	239 (97%)	7 (3%)	0	100	100
2	B	11/14 (79%)	11 (100%)	0	0	100	100
All	All	257/294 (87%)	250 (97%)	7 (3%)	0	100	100

There are no Ramachandran outliers to report.

5.3.2 Protein sidechains ⓘ

In the following table, the Percentiles column shows the percent sidechain outliers of the chain as a percentile score with respect to all X-ray entries followed by that with respect to entries of similar resolution.

The Analysed column shows the number of residues for which the sidechain conformation was analysed, and the total number of residues.

Mol	Chain	Analysed	Rotameric	Outliers	Percentiles	
1	A	228/255 (89%)	222 (97%)	6 (3%)	54	74
2	B	12/13 (92%)	12 (100%)	0	100	100
All	All	240/268 (90%)	234 (98%)	6 (2%)	55	76

All (6) residues with a non-rotameric sidechain are listed below:

Mol	Chain	Res	Type
1	A	585	ARG
1	A	613	TYR
1	A	710	GLN
1	A	736	CYS
1	A	738	GLN
1	A	755	GLU

Some sidechains can be flipped to improve hydrogen bonding and reduce clashes. All (5) such sidechains are listed below:

Mol	Chain	Res	Type
1	A	597	GLN
1	A	711	ASN
1	A	759	ASN
1	A	760	GLN
2	B	742	ASN

5.3.3 RNA ⓘ

There are no RNA molecules in this entry.

5.4 Non-standard residues in protein, DNA, RNA chains ⓘ

There are no non-standard protein/DNA/RNA residues in this entry.

5.5 Carbohydrates ⓘ

There are no carbohydrates in this entry.

5.6 Ligand geometry ⓘ

3 ligands are modelled in this entry.

In the following table, the Counts columns list the number of bonds (or angles) for which Mogul statistics could be retrieved, the number of bonds (or angles) that are observed in the model and the number of bonds (or angles) that are defined in the chemical component dictionary. The Link column lists molecule types, if any, to which the group is linked. The Z score for a bond length (or angle) is the number of standard deviations the observed value is removed from the expected value. A bond length (or angle) with $|Z| > 2$ is considered an outlier worth inspection. RMSZ is the root-mean-square of all Z scores of the bond lengths (or angles).

Mol	Type	Chain	Res	Link	Bond lengths			Bond angles		
					Counts	RMSZ	$\# Z > 2$	Counts	RMSZ	$\# Z > 2$
3	CPS	A	1777	-	39,39,45	0.63	0	61,61,70	1.36	10 (16%)
4	EDO	A	1778	-	3,3,3	0.53	0	2,2,2	0.31	0
5	E7T	A	1779	-	32,35,35	0.92	1 (3%)	46,55,55	1.52	6 (13%)

In the following table, the Chirals column lists the number of chiral outliers, the number of chiral centers analysed, the number of these observed in the model and the number defined in the chemical component dictionary. Similar counts are reported in the Torsion and Rings columns. '-' means no outliers of that kind were identified.

Mol	Type	Chain	Res	Link	Chirals	Torsions	Rings
3	CPS	A	1777	-	-	0/17/82/90	0/4/4/4
4	EDO	A	1778	-	-	0/1/1/1	0/0/0/0
5	E7T	A	1779	-	-	0/15/34/34	0/4/4/4

All (1) bond length outliers are listed below:

Mol	Chain	Res	Type	Atoms	Z	Observed(Å)	Ideal(Å)
5	A	1779	E7T	C15-N16	2.28	1.38	1.35

All (16) bond angle outliers are listed below:

Mol	Chain	Res	Type	Atoms	Z	Observed(°)	Ideal(°)
5	A	1779	E7T	C22-C15-N16	-4.56	119.50	123.42
5	A	1779	E7T	F33-C32-C6	-3.13	108.86	112.07
3	A	1777	CPS	C9-C5-C4	-2.90	115.13	117.68
3	A	1777	CPS	C11-C2-C1	-2.73	103.61	108.23
3	A	1777	CPS	C16-C15-C14	-2.20	108.70	111.07
5	A	1779	E7T	C1-C2-C3	-2.16	107.59	114.13
3	A	1777	CPS	C12-C1-C2	2.17	116.69	112.81
5	A	1779	E7T	C18-N16-C15	2.35	120.94	117.83
3	A	1777	CPS	C3-C4-C5	2.37	113.61	111.22
3	A	1777	CPS	C10-C5-C4	2.43	111.53	109.09
3	A	1777	CPS	C21-C20-C9	2.48	116.82	112.99
5	A	1779	E7T	C5-C3-C31	2.50	113.25	109.52

Continued on next page...

Continued from previous page...

Mol	Chain	Res	Type	Atoms	Z	Observed(°)	Ideal(°)
3	A	1777	CPS	C1-C2-C15	2.56	110.58	107.76
3	A	1777	CPS	C16-C17-C18	2.60	114.22	111.46
3	A	1777	CPS	C14-C15-C2	2.74	115.60	112.66
5	A	1779	E7T	C32-C6-C8	4.13	113.01	110.61

There are no chirality outliers.

There are no torsion outliers.

There are no ring outliers.

1 monomer is involved in 1 short contact:

Mol	Chain	Res	Type	Clashes	Symm-Clashes
4	A	1778	EDO	1	0

5.7 Other polymers [i](#)

There are no such residues in this entry.

5.8 Polymer linkage issues [i](#)

There are no chain breaks in this entry.

6 Fit of model and data [i](#)

6.1 Protein, DNA and RNA chains [i](#)

In the following table, the column labelled ‘#RSRZ> 2’ contains the number (and percentage) of RSRZ outliers, followed by percent RSRZ outliers for the chain as percentile scores relative to all X-ray entries and entries of similar resolution. The OWAB column contains the minimum, median, 95th percentile and maximum values of the occupancy-weighted average B-factor per residue. The column labelled ‘Q< 0.9’ lists the number of (and percentage) of residues with an average occupancy less than 0.9.

Mol	Chain	Analysed	<RSRZ>	#RSRZ>2	OWAB(Å ²)	Q<0.9
1	A	248/280 (88%)	-0.23	9 (3%) 46 47	29, 47, 88, 114	0
2	B	13/14 (92%)	-0.13	0 100 100	34, 42, 83, 89	0
All	All	261/294 (88%)	-0.23	9 (3%) 49 49	29, 47, 88, 114	0

All (9) RSRZ outliers are listed below:

Mol	Chain	Res	Type	RSRZ
1	A	616	SER	5.6
1	A	712	TRP	4.5
1	A	708	SER	3.0
1	A	529	THR	3.0
1	A	619	ASN	2.9
1	A	709	SER	2.6
1	A	705	GLU	2.5
1	A	618	ALA	2.2
1	A	684	GLU	2.0

6.2 Non-standard residues in protein, DNA, RNA chains [i](#)

There are no non-standard protein/DNA/RNA residues in this entry.

6.3 Carbohydrates [i](#)

There are no carbohydrates in this entry.

6.4 Ligands [i](#)

In the following table, the Atoms column lists the number of modelled atoms in the group and the number defined in the chemical component dictionary. LLDF column lists the quality of electron

density of the group with respect to its neighbouring residues in protein, DNA or RNA chains. The B-factors column lists the minimum, median, 95th percentile and maximum values of B factors of atoms in the group. The column labelled 'Q< 0.9' lists the number of atoms with occupancy less than 0.9.

Mol	Type	Chain	Res	Atoms	RSCC	RSR	LLDF	B-factors(\AA^2)	Q<0.9
3	CPS	A	1777	36/42	0.90	0.19	1.58	67,79,106,106	0
5	E7T	A	1779	32/32	0.94	0.16	1.04	38,47,62,65	0
4	EDO	A	1778	4/4	0.95	0.13	-0.01	54,55,56,56	0

6.5 Other polymers

There are no such residues in this entry.