



Full wwPDB X-ray Structure Validation Report ⓘ

Feb 1, 2016 – 04:47 PM GMT

PDB ID : 4G59
Title : Crystal structure of the murine cytomegalovirus MHC-I homolog m152 with
ligand RAE-1 gamma
Authors : Wang, R.; Natarajan, K.; Margulies, D.H.
Deposited on : 2012-07-17
Resolution : 2.44 Å(reported)

This is a Full wwPDB X-ray Structure Validation Report for a publicly released PDB entry.
We welcome your comments at validation@mail.wwpdb.org
A user guide is available at
<http://wwpdb.org/validation/2016/XrayValidationReportHelp>
with specific help available everywhere you see the ⓘ symbol.

The following versions of software and data (see [references ⓘ](#)) were used in the production of this report:

MolProbity : 4.02b-467
Mogul : 1.7 (RC4), CSD as536be (2015)
Xtriage (Phenix) : 1.9-1692
EDS : rb-20026688
Percentile statistics : 20151230.v01 (using entries in the PDB archive December 30th 2015)
Refmac : 5.8.0135
CCP4 : 6.5.0
Ideal geometry (proteins) : Engh & Huber (2001)
Ideal geometry (DNA, RNA) : Parkinson et al. (1996)
Validation Pipeline (wwPDB-VP) : trunk26865

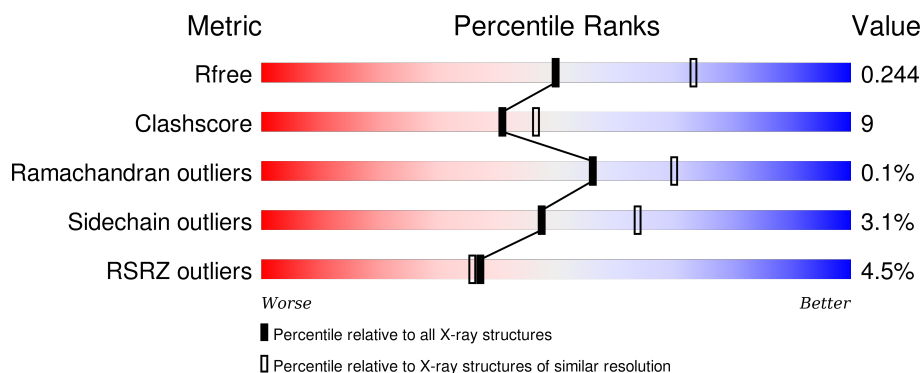
1 Overall quality at a glance

The following experimental techniques were used to determine the structure:

X-RAY DIFFRACTION

The reported resolution of this entry is 2.44 Å.

Percentile scores (ranging between 0-100) for global validation metrics of the entry are shown in the following graphic. The table shows the number of entries on which the scores are based.



Metric	Whole archive (#Entries)	Similar resolution (#Entries, resolution range(Å))
R_{free}	91344	1003 (2.46-2.42)
Clashscore	102246	1071 (2.46-2.42)
Ramachandran outliers	100387	1065 (2.46-2.42)
Sidechain outliers	100360	1065 (2.46-2.42)
RSRZ outliers	91569	1005 (2.46-2.42)

The table below summarises the geometric issues observed across the polymeric chains and their fit to the electron density. The red, orange, yellow and green segments on the lower bar indicate the fraction of residues that contain outliers for ≥ 3 , 2, 1 and 0 types of geometric quality criteria. A grey segment represents the fraction of residues that are not modelled. The numeric value for each fraction is indicated below the corresponding segment, with a dot representing fractions $\leq 5\%$. The upper red bar (where present) indicates the fraction of residues that have poor fit to the electron density. The numeric value is given above the bar.

Mol	Chain	Length	Quality of chain
1	A	205	<div> <div>5%</div> <div>60% 17% 21%</div> </div>
1	B	205	<div> <div>7%</div> <div>59% 19% 20%</div> </div>
2	C	321	<div> <div>2%</div> <div>70% 12% 18%</div> </div>
2	D	321	<div> <div>2%</div> <div>71% 11% 18%</div> </div>

2 Entry composition

There are 4 unique types of molecules in this entry. The entry contains 7046 atoms, of which 0 are hydrogens and 0 are deuteriums.

In the tables below, the ZeroOcc column contains the number of atoms modelled with zero occupancy, the AltConf column contains the number of residues with at least one atom in alternate conformation and the Trace column contains the number of residues modelled with at most 2 atoms.

- Molecule 1 is a protein called Retinoic acid early-inducible protein 1-gamma.

Mol	Chain	Residues	Atoms					ZeroOcc	AltConf	Trace
1	A	162	Total	C	N	O	S	0	0	0
			1312	828	222	254	8			
1	B	163	Total	C	N	O	S	0	0	0
			1319	832	223	256	8			

There are 2 discrepancies between the modelled and reference sequences:

Chain	Residue	Modelled	Actual	Comment	Reference
A	-2	MET	-	INITIATING METHIONINE	UNP O08604
B	-2	MET	-	INITIATING METHIONINE	UNP O08604

- Molecule 2 is a protein called M152 protein.

Mol	Chain	Residues	Atoms					ZeroOcc	AltConf	Trace
2	C	264	Total	C	N	O	S	0	0	0
			2142	1360	360	407	15			
2	D	264	Total	C	N	O	S	0	0	0
			2142	1360	360	407	15			

There are 24 discrepancies between the modelled and reference sequences:

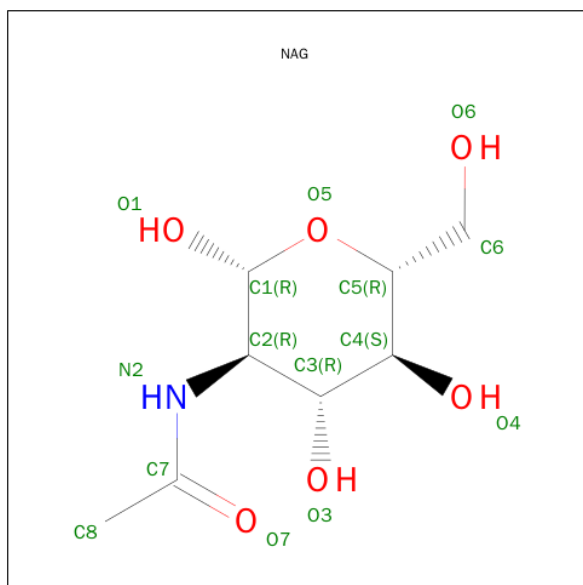
Chain	Residue	Modelled	Actual	Comment	Reference
C	308	LEU	-	EXPRESSION TAG	UNP Q83156
C	309	VAL	-	EXPRESSION TAG	UNP Q83156
C	310	PRO	-	EXPRESSION TAG	UNP Q83156
C	311	ARG	-	EXPRESSION TAG	UNP Q83156
C	312	GLY	-	EXPRESSION TAG	UNP Q83156
C	313	SER	-	EXPRESSION TAG	UNP Q83156
C	314	HIS	-	EXPRESSION TAG	UNP Q83156
C	315	HIS	-	EXPRESSION TAG	UNP Q83156
C	316	HIS	-	EXPRESSION TAG	UNP Q83156
C	317	HIS	-	EXPRESSION TAG	UNP Q83156

Continued on next page...

Continued from previous page...

Chain	Residue	Modelled	Actual	Comment	Reference
C	318	HIS	-	EXPRESSION TAG	UNP Q83156
C	319	HIS	-	EXPRESSION TAG	UNP Q83156
D	308	LEU	-	EXPRESSION TAG	UNP Q83156
D	309	VAL	-	EXPRESSION TAG	UNP Q83156
D	310	PRO	-	EXPRESSION TAG	UNP Q83156
D	311	ARG	-	EXPRESSION TAG	UNP Q83156
D	312	GLY	-	EXPRESSION TAG	UNP Q83156
D	313	SER	-	EXPRESSION TAG	UNP Q83156
D	314	HIS	-	EXPRESSION TAG	UNP Q83156
D	315	HIS	-	EXPRESSION TAG	UNP Q83156
D	316	HIS	-	EXPRESSION TAG	UNP Q83156
D	317	HIS	-	EXPRESSION TAG	UNP Q83156
D	318	HIS	-	EXPRESSION TAG	UNP Q83156
D	319	HIS	-	EXPRESSION TAG	UNP Q83156

- Molecule 3 is SUGAR (N-ACETYL-D-GLUCOSAMINE) (three-letter code: NAG) (formula: $C_8H_{15}NO_6$).

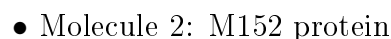
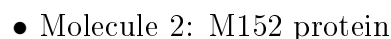


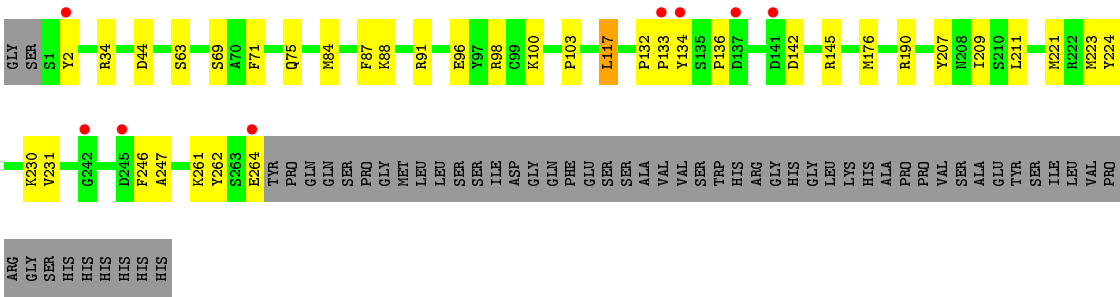
Mol	Chain	Residues	Atoms				ZeroOcc	AltConf
3	C	1	Total	C	N	O	0	0
			14	8	1	5		
3	C	1	Total	C	N	O	0	0
			14	8	1	5		
3	D	1	Total	C	N	O	0	0
			14	8	1	5		
3	D	1	Total	C	N	O	0	0
			14	8	1	5		

- Molecule 4 is water.

Mol	Chain	Residues	Atoms		ZeroOcc	AltConf
4	A	13	Total 13	O 13	0	0
4	C	26	Total 26	O 26	0	0
4	B	8	Total 8	O 8	0	0
4	D	28	Total 28	O 28	0	0

- Molecule 1: Retinoic acid early-inducible protein 1-gamma





4 Data and refinement statistics

Property	Value	Source
Space group	C 1 2 1	Depositor
Cell constants a, b, c, α , β , γ	193.44Å 99.80Å 68.61Å 90.00° 100.72° 90.00°	Depositor
Resolution (Å)	47.52 – 2.44 47.52 – 2.44	Depositor EDS
% Data completeness (in resolution range)	94.2 (47.52-2.44) 94.2 (47.52-2.44)	Depositor EDS
R_{merge}	0.07	Depositor
R_{sym}	(Not available)	Depositor
$\langle I/\sigma(I) \rangle$ ¹	0.00 (at 2.42Å)	Xtriage
Refinement program	PHENIX (phenix.refine: 1.8_1069)	Depositor
R, R_{free}	0.201 , 0.245 0.202 , 0.244	Depositor DCC
R_{free} test set	2245 reflections (4.96%)	DCC
Wilson B-factor (Å ²)	44.6	Xtriage
Anisotropy	0.073	Xtriage
Bulk solvent k_{sol} (e/Å ³), B_{sol} (Å ²)	0.31 , 36.7	EDS
Estimated twinning fraction	No twinning to report.	Xtriage
L-test for twinning ²	$\langle L \rangle = 0.50$, $\langle L^2 \rangle = 0.33$	Xtriage
Outliers	0 of 46945 reflections	Xtriage
F_o, F_c correlation	0.94	EDS
Total number of atoms	7046	wwPDB-VP
Average B, all atoms (Å ²)	51.0	wwPDB-VP

Xtriage's analysis on translational NCS is as follows: *The largest off-origin peak in the Patterson function is 5.55% of the height of the origin peak. No significant pseudotranslation is detected.*

¹Intensities estimated from amplitudes.

²Theoretical values of $\langle |L| \rangle$, $\langle L^2 \rangle$ for acentric reflections are 0.5, 0.375 respectively for untwinned datasets, and 0.333, 0.2 for perfectly twinned datasets.

5 Model quality

5.1 Standard geometry

Bond lengths and bond angles in the following residue types are not validated in this section: NAG

The Z score for a bond length (or angle) is the number of standard deviations the observed value is removed from the expected value. A bond length (or angle) with $|Z| > 5$ is considered an outlier worth inspection. RMSZ is the root-mean-square of all Z scores of the bond lengths (or angles).

Mol	Chain	Bond lengths		Bond angles	
		RMSZ	$\# Z > 5$	RMSZ	$\# Z > 5$
1	A	0.45	0/1342	0.61	0/1821
1	B	0.41	0/1349	0.61	1/1831 (0.1%)
2	C	0.48	0/2194	0.65	2/2969 (0.1%)
2	D	0.54	2/2194 (0.1%)	0.62	0/2969
All	All	0.48	2/7079 (0.0%)	0.63	3/9590 (0.0%)

Chiral center outliers are detected by calculating the chiral volume of a chiral center and verifying if the center is modelled as a planar moiety or with the opposite hand. A planarity outlier is detected by checking planarity of atoms in a peptide group, atoms in a mainchain group or atoms of a sidechain that are expected to be planar.

Mol	Chain	#Chirality outliers	#Planarity outliers
1	A	0	1

All (2) bond length outliers are listed below:

Mol	Chain	Res	Type	Atoms	Z	Observed(Å)	Ideal(Å)
2	D	207	TYR	CD2-CE2	-7.39	1.28	1.39
2	D	207	TYR	CD1-CE1	-6.61	1.29	1.39

All (3) bond angle outliers are listed below:

Mol	Chain	Res	Type	Atoms	Z	Observed(°)	Ideal(°)
1	B	88	GLY	N-CA-C	-8.74	91.26	113.10
2	C	239	ASP	N-CA-C	-6.09	94.55	111.00
2	C	229	LEU	CA-CB-CG	5.04	126.89	115.30

There are no chirality outliers.

All (1) planarity outliers are listed below:

Mol	Chain	Res	Type	Group
1	A	83	THR	Peptide

5.2 Too-close contacts ⓘ

In the following table, the Non-H and H(model) columns list the number of non-hydrogen atoms and hydrogen atoms in the chain respectively. The H(added) column lists the number of hydrogen atoms added and optimized by MolProbity. The Clashes column lists the number of clashes within the asymmetric unit, whereas Symm-Clashes lists symmetry related clashes.

Mol	Chain	Non-H	H(model)	H(added)	Clashes	Symm-Clashes
1	A	1312	0	1266	33	0
1	B	1319	0	1273	31	0
2	C	2142	0	2050	26	0
2	D	2142	0	2050	26	0
3	C	28	0	26	3	0
3	D	28	0	26	2	0
4	A	13	0	0	0	0
4	B	8	0	0	0	0
4	C	26	0	0	1	0
4	D	28	0	0	1	0
All	All	7046	0	6691	118	0

The all-atom clashscore is defined as the number of clashes found per 1000 atoms (including hydrogen atoms). The all-atom clashscore for this structure is 9.

All (118) close contacts within the same asymmetric unit are listed below, sorted by their clash magnitude.

Atom-1	Atom-2	Interatomic distance (Å)	Clash overlap (Å)
1:B:83:THR:OG1	1:B:86:THR:HG22	1.42	1.14
1:B:83:THR:CB	1:B:86:THR:HG22	1.85	1.07
2:C:237:LEU:O	2:C:238:ARG:HG2	1.63	0.99
1:A:20:LEU:HB2	1:A:39:ILE:HD11	1.47	0.93
1:A:40:ASN:O	1:A:41:LYS:HB2	1.66	0.93
1:B:83:THR:OG1	1:B:86:THR:CG2	2.18	0.92
1:A:40:ASN:O	1:A:41:LYS:CD	2.30	0.80
1:B:85:LYS:HE2	1:B:87:ASN:HB3	1.63	0.79
2:C:237:LEU:O	2:C:238:ARG:CG	2.30	0.78
1:A:40:ASN:O	1:A:41:LYS:CB	2.30	0.78
3:C:401:NAG:O7	3:C:401:NAG:C3	2.32	0.77
2:C:261:LYS:NZ	2:C:263:SER:OG	2.19	0.75
1:B:83:THR:HB	1:B:86:THR:HG22	1.69	0.75

Continued on next page...

Continued from previous page...

Atom-1	Atom-2	Interatomic distance (Å)	Clash overlap (Å)
1:B:84:HIS:N	1:B:85:LYS:HA	2.00	0.74
2:C:238:ARG:NH1	4:C:518:HOH:O	2.21	0.73
2:C:237:LEU:O	2:C:238:ARG:CB	2.38	0.72
3:C:401:NAG:O7	3:C:401:NAG:H3	1.90	0.71
1:A:40:ASN:C	1:A:41:LYS:HD2	2.11	0.71
2:D:63:SER:HB3	3:D:402:NAG:O6	1.91	0.71
2:C:119:ARG:NH1	2:C:127:GLU:OE1	2.25	0.69
1:A:3:HIS:CE1	1:A:172:LYS:HB2	2.27	0.69
1:A:53:ASN:ND2	1:A:170:GLN:OE1	2.26	0.69
1:B:87:ASN:O	1:B:88:GLY:C	2.33	0.66
1:A:82:ASP:O	1:A:86:THR:N	2.29	0.66
1:A:20:LEU:HD12	1:A:39:ILE:HD12	1.78	0.65
1:B:156:PHE:HD2	1:B:157:ILE:HD12	1.62	0.64
2:D:44:ASP:HB2	2:D:223:MET:CE	2.28	0.64
1:A:40:ASN:O	1:A:41:LYS:HD3	1.96	0.63
1:B:83:THR:CB	1:B:86:THR:CG2	2.71	0.62
2:C:27:ARG:HD2	2:C:79:VAL:HG12	1.84	0.60
2:D:63:SER:CB	3:D:402:NAG:O6	2.49	0.59
1:B:83:THR:HB	1:B:86:THR:N	2.17	0.59
1:A:27:LEU:HD13	1:A:32:LEU:HA	1.85	0.59
2:C:44:ASP:HB2	2:C:223:MET:CE	2.34	0.58
2:D:176:MET:HG2	4:D:506:HOH:O	2.04	0.57
1:B:104:GLN:N	1:B:125:GLU:OE2	2.37	0.57
1:B:79:THR:HG23	1:B:81:VAL:HG12	1.86	0.56
2:D:44:ASP:HB2	2:D:223:MET:HE1	1.87	0.56
1:B:85:LYS:CE	1:B:87:ASN:HB3	2.33	0.56
2:C:238:ARG:O	2:C:238:ARG:HG3	2.05	0.56
1:A:6:ARG:HH11	1:A:8:ASN:HD21	1.54	0.56
1:A:28:VAL:O	1:A:31:ILE:HG23	2.06	0.56
1:A:104:GLN:N	1:A:125:GLU:OE2	2.36	0.55
1:A:40:ASN:O	1:A:41:LYS:HD2	2.05	0.55
1:B:12:LYS:NZ	1:B:18:ASP:OD2	2.30	0.54
1:B:76:VAL:HA	1:B:79:THR:HG22	1.90	0.54
1:B:108:ALA:HB2	1:B:157:ILE:HD13	1.90	0.53
1:A:83:THR:OG1	1:A:118:TYR:OH	2.11	0.53
2:C:124:LYS:HG2	2:C:125:GLY:H	1.75	0.51
1:B:40:ASN:OD1	1:B:40:ASN:N	2.43	0.51
1:A:83:THR:HG22	1:A:84:HIS:H	1.74	0.51
1:B:9:LEU:HB2	1:B:94:VAL:HB	1.93	0.51
1:A:13:ALA:HB2	1:A:89:TYR:CD1	2.46	0.50
2:D:221:MET:HG2	2:D:231:VAL:HG22	1.92	0.50

Continued on next page...

Continued from previous page...

Atom-1	Atom-2	Interatomic distance (Å)	Clash overlap (Å)
2:C:6:ARG:HH11	2:C:8:PHE:HZ	1.59	0.50
2:D:44:ASP:HB2	2:D:223:MET:HE3	1.93	0.50
1:A:134:ASP:OD2	2:D:190:ARG:N	2.36	0.50
2:D:87:PHE:C	2:D:88:LYS:HG2	2.32	0.50
2:D:211:LEU:HD21	2:D:246:PHE:HB2	1.93	0.49
2:C:204:PRO:HA	2:C:229:LEU:HD21	1.94	0.49
2:D:96:GLU:OE2	2:D:98:ARG:NE	2.39	0.48
1:B:10:THR:O	1:B:22:TYR:HA	2.14	0.48
1:A:32:LEU:HD21	1:A:35:HIS:HB2	1.95	0.48
2:C:44:ASP:HB2	2:C:223:MET:HE1	1.94	0.47
2:C:237:LEU:O	2:C:238:ARG:HB3	2.13	0.47
2:C:223:MET:HB2	2:C:223:MET:HE3	1.66	0.47
2:C:210:SER:HA	2:C:217:ILE:HD11	1.96	0.47
1:B:3:HIS:CD2	1:B:172:LYS:HB2	2.50	0.47
1:A:20:LEU:HD12	1:A:39:ILE:CD1	2.45	0.47
1:A:40:ASN:C	1:A:41:LYS:CD	2.76	0.47
2:D:87:PHE:CD1	2:D:91:ARG:HD3	2.50	0.47
3:C:401:NAG:O7	3:C:401:NAG:O3	2.30	0.46
2:D:100:LYS:HE3	2:D:100:LYS:HB3	1.71	0.46
1:B:32:LEU:HD21	1:B:35:HIS:HB2	1.98	0.46
2:D:247:ALA:HB2	2:D:261:LYS:HD3	1.98	0.46
1:A:35:HIS:O	1:A:41:LYS:HG2	2.16	0.45
1:A:161:ARG:CZ	1:A:161:ARG:HB3	2.45	0.45
1:A:3:HIS:NE2	1:A:172:LYS:HB2	2.30	0.45
1:B:83:THR:C	1:B:85:LYS:HA	2.37	0.45
2:C:132:PRO:HA	2:C:133:PRO:HD3	1.83	0.45
1:B:71:LYS:NZ	1:B:148:ASP:OD2	2.48	0.45
1:A:21:TRP:CE3	1:A:73:ARG:HD2	2.52	0.45
2:D:134:TYR:C	2:D:136:PRO:HD3	2.37	0.45
1:B:87:ASN:ND2	1:B:87:ASN:O	2.50	0.45
1:B:96:MET:HA	1:B:109:THR:O	2.16	0.45
1:A:89:TYR:HA	1:A:90:PRO:HD3	1.87	0.44
1:A:80:LYS:N	1:A:80:LYS:HD2	2.32	0.44
1:A:25:LYS:HG2	1:A:32:LEU:HD11	1.99	0.44
1:A:87:ASN:C	1:A:87:ASN:OD1	2.56	0.44
2:D:223:MET:HB2	2:D:223:MET:HE2	1.83	0.43
1:B:96:MET:SD	1:B:157:ILE:HD11	2.59	0.43
2:C:87:PHE:O	2:C:88:LYS:HB2	2.19	0.43
2:C:44:ASP:HB2	2:C:223:MET:HE2	1.98	0.43
1:B:53:ASN:ND2	1:B:170:GLN:OE1	2.51	0.43
1:B:92:LEU:HD13	1:B:114:ILE:HG12	2.00	0.43

Continued on next page...

Continued from previous page...

Atom-1	Atom-2	Interatomic distance (Å)	Clash overlap (Å)
1:B:140:MET:O	1:B:144:ASN:HB2	2.19	0.42
2:D:142:ASP:OD1	2:D:145:ARG:NH1	2.52	0.42
2:D:224:TYR:OH	2:D:230:LYS:HE3	2.20	0.42
1:A:4:SER:HB2	1:A:98:TYR:O	2.20	0.41
2:D:71:PHE:O	2:D:75:GLN:HG2	2.20	0.41
1:A:84:HIS:NE2	1:A:115:SER:O	2.53	0.41
2:D:100:LYS:NZ	2:D:103:PRO:O	2.45	0.41
2:C:33:PHE:O	2:C:50:ALA:HA	2.20	0.41
2:C:171:ARG:HG2	2:C:171:ARG:HH11	1.86	0.41
2:D:87:PHE:O	2:D:88:LYS:CB	2.68	0.41
2:C:14:ASP:OD2	2:C:17:GLN:NE2	2.48	0.41
1:B:87:ASN:C	1:B:89:TYR:N	2.61	0.41
2:D:117:LEU:HD21	2:D:132:PRO:HG3	2.02	0.41
1:A:118:TYR:CG	1:A:139:ILE:HD12	2.55	0.41
2:C:96:GLU:HB3	2:C:109:LEU:HB2	2.03	0.41
2:D:34:ARG:HG2	2:D:34:ARG:HH11	1.85	0.41
2:D:132:PRO:HA	2:D:133:PRO:HD3	1.81	0.41
2:C:196:SER:HB3	2:C:234:TRP:CZ3	2.55	0.41
2:D:209:ILE:HG21	2:D:209:ILE:HD13	1.84	0.41
2:D:2:TYR:HD1	2:D:262:TYR:HE2	1.69	0.40
1:B:155:TYR:C	1:B:158:PRO:HD2	2.42	0.40
2:C:172:LYS:O	2:C:176:MET:HG3	2.21	0.40
2:C:39:LEU:HA	2:C:39:LEU:HD23	1.92	0.40

There are no symmetry-related clashes.

5.3 Torsion angles [i](#)

5.3.1 Protein backbone [i](#)

In the following table, the Percentiles column shows the percent Ramachandran outliers of the chain as a percentile score with respect to all X-ray entries followed by that with respect to entries of similar resolution.

The Analysed column shows the number of residues for which the backbone conformation was analysed, and the total number of residues.

Mol	Chain	Analysed	Favoured	Allowed	Outliers	Percentiles	
1	A	158/205 (77%)	154 (98%)	3 (2%)	1 (1%)	30	36
1	B	159/205 (78%)	155 (98%)	4 (2%)	0	100	100

Continued on next page...

Continued from previous page...

Mol	Chain	Analysed	Favoured	Allowed	Outliers	Percentiles	
2	C	262/321 (82%)	253 (97%)	9 (3%)	0	100	100
2	D	262/321 (82%)	248 (95%)	14 (5%)	0	100	100
All	All	841/1052 (80%)	810 (96%)	30 (4%)	1 (0%)	56	70

All (1) Ramachandran outliers are listed below:

Mol	Chain	Res	Type
1	A	144	ASN

5.3.2 Protein sidechains ⓘ

In the following table, the Percentiles column shows the percent sidechain outliers of the chain as a percentile score with respect to all X-ray entries followed by that with respect to entries of similar resolution.

The Analysed column shows the number of residues for which the sidechain conformation was analysed, and the total number of residues.

Mol	Chain	Analysed	Rotameric	Outliers	Percentiles	
1	A	149/190 (78%)	142 (95%)	7 (5%)	32	45
1	B	150/190 (79%)	142 (95%)	8 (5%)	28	40
2	C	234/282 (83%)	229 (98%)	5 (2%)	61	76
2	D	234/282 (83%)	230 (98%)	4 (2%)	68	80
All	All	767/944 (81%)	743 (97%)	24 (3%)	47	64

All (24) residues with a non-rotameric sidechain are listed below:

Mol	Chain	Res	Type
1	A	31	ILE
1	A	83	THR
1	A	84	HIS
1	A	86	THR
1	A	87	ASN
1	A	100	GLN
1	A	173	GLU
2	C	69	SER
2	C	121	THR
2	C	153	SER
2	C	155	LEU

Continued on next page...

Continued from previous page...

Mol	Chain	Res	Type
2	C	225	SER
1	B	35	HIS
1	B	40	ASN
1	B	55	THR
1	B	66	ASN
1	B	80	LYS
1	B	84	HIS
1	B	115	SER
1	B	134	ASP
2	D	69	SER
2	D	84	MET
2	D	117	LEU
2	D	264	GLU

Some sidechains can be flipped to improve hydrogen bonding and reduce clashes. All (8) such sidechains are listed below:

Mol	Chain	Res	Type
1	A	8	ASN
1	A	53	ASN
1	A	144	ASN
1	A	170	GLN
1	B	3	HIS
1	B	53	ASN
1	B	91	HIS
1	B	144	ASN

5.3.3 RNA ⓘ

There are no RNA molecules in this entry.

5.4 Non-standard residues in protein, DNA, RNA chains ⓘ

There are no non-standard protein/DNA/RNA residues in this entry.

5.5 Carbohydrates ⓘ

There are no carbohydrates in this entry.

5.6 Ligand geometry

4 ligands are modelled in this entry.

In the following table, the Counts columns list the number of bonds (or angles) for which Mogul statistics could be retrieved, the number of bonds (or angles) that are observed in the model and the number of bonds (or angles) that are defined in the chemical component dictionary. The Link column lists molecule types, if any, to which the group is linked. The Z score for a bond length (or angle) is the number of standard deviations the observed value is removed from the expected value. A bond length (or angle) with $|Z| > 2$ is considered an outlier worth inspection. RMSZ is the root-mean-square of all Z scores of the bond lengths (or angles).

Mol	Type	Chain	Res	Link	Bond lengths			Bond angles		
					Counts	RMSZ	# $ Z > 2$	Counts	RMSZ	# $ Z > 2$
3	NAG	C	401	2	14,14,15	0.50	0	15,19,21	0.85	1 (6%)
3	NAG	C	402	2	14,14,15	0.50	0	15,19,21	0.89	1 (6%)
3	NAG	D	401	2	14,14,15	0.49	0	15,19,21	0.88	1 (6%)
3	NAG	D	402	2	14,14,15	0.64	0	15,19,21	1.24	1 (6%)

In the following table, the Chirals column lists the number of chiral outliers, the number of chiral centers analysed, the number of these observed in the model and the number defined in the chemical component dictionary. Similar counts are reported in the Torsion and Rings columns. '-' means no outliers of that kind were identified.

Mol	Type	Chain	Res	Link	Chirals	Torsions	Rings
3	NAG	C	401	2	-	0/6/23/26	0/1/1/1
3	NAG	C	402	2	-	0/6/23/26	0/1/1/1
3	NAG	D	401	2	-	0/6/23/26	0/1/1/1
3	NAG	D	402	2	-	0/6/23/26	0/1/1/1

There are no bond length outliers.

All (4) bond angle outliers are listed below:

Mol	Chain	Res	Type	Atoms	Z	Observed(°)	Ideal(°)
3	D	402	NAG	C1-O5-C5	-3.89	107.31	112.25
3	C	402	NAG	C4-C3-C2	-2.31	107.64	111.23
3	D	401	NAG	C4-C3-C2	-2.26	107.72	111.23
3	C	401	NAG	C4-C3-C2	-2.21	107.80	111.23

There are no chirality outliers.

There are no torsion outliers.

There are no ring outliers.

2 monomers are involved in 5 short contacts:

Mol	Chain	Res	Type	Clashes	Symm-Clashes
3	C	401	NAG	3	0
3	D	402	NAG	2	0

5.7 Other polymers [i](#)

There are no such residues in this entry.

5.8 Polymer linkage issues [i](#)

There are no chain breaks in this entry.

6 Fit of model and data ⓘ

6.1 Protein, DNA and RNA chains ⓘ

In the following table, the column labelled ‘#RSRZ> 2’ contains the number (and percentage) of RSRZ outliers, followed by percent RSRZ outliers for the chain as percentile scores relative to all X-ray entries and entries of similar resolution. The OWAB column contains the minimum, median, 95th percentile and maximum values of the occupancy-weighted average B-factor per residue. The column labelled ‘Q< 0.9’ lists the number of (and percentage) of residues with an average occupancy less than 0.9.

Mol	Chain	Analysed	<RSRZ>	#RSRZ>2	OWAB(Å ²)	Q<0.9
1	A	162/205 (79%)	-0.09	10 (6%) 24 22	30, 46, 100, 123	0
1	B	163/205 (79%)	0.28	14 (8%) 13 11	33, 53, 111, 124	0
2	C	264/321 (82%)	-0.20	6 (2%) 64 63	27, 44, 75, 114	0
2	D	264/321 (82%)	-0.09	8 (3%) 54 52	29, 48, 84, 119	0
All	All	853/1052 (81%)	-0.06	38 (4%) 37 36	27, 47, 90, 124	0

All (38) RSRZ outliers are listed below:

Mol	Chain	Res	Type	RSRZ
1	A	83	THR	6.2
1	B	88	GLY	5.6
1	A	81	VAL	5.3
2	D	134	TYR	5.0
1	B	42	THR	4.8
1	B	81	VAL	4.7
1	B	86	THR	4.5
1	B	52	ALA	4.4
1	B	30	GLU	4.3
2	C	242	GLY	4.1
1	B	87	ASN	3.9
1	A	41	LYS	3.7
2	D	242	GLY	3.4
1	B	84	HIS	3.3
1	B	31	ILE	3.3
1	B	171	SER	3.3
1	A	85	LYS	3.2
2	C	6	ARG	3.1
1	B	82	ASP	3.1
2	D	264	GLU	2.9
1	B	83	THR	2.9

Continued on next page...

Continued from previous page...

Mol	Chain	Res	Type	RSRZ
1	A	52	ALA	2.8
2	D	245	ASP	2.7
2	D	137	ASP	2.6
1	B	41	LYS	2.6
1	A	82	ASP	2.5
1	A	87	ASN	2.5
2	C	244	THR	2.4
2	D	2	TYR	2.4
1	A	86	THR	2.3
2	C	123	ASP	2.3
1	A	84	HIS	2.3
1	A	30	GLU	2.3
2	C	1	SER	2.3
2	C	263	SER	2.2
2	D	141	ASP	2.2
2	D	133	PRO	2.2
1	B	79	THR	2.1

6.2 Non-standard residues in protein, DNA, RNA chains [i](#)

There are no non-standard protein/DNA/RNA residues in this entry.

6.3 Carbohydrates [i](#)

There are no carbohydrates in this entry.

6.4 Ligands [i](#)

In the following table, the Atoms column lists the number of modelled atoms in the group and the number defined in the chemical component dictionary. LLDF column lists the quality of electron density of the group with respect to its neighbouring residues in protein, DNA or RNA chains. The B-factors column lists the minimum, median, 95th percentile and maximum values of B factors of atoms in the group. The column labelled 'Q< 0.9' lists the number of atoms with occupancy less than 0.9.

Mol	Type	Chain	Res	Atoms	RSCC	RSR	LLDF	B-factors(Å ²)	Q<0.9
3	NAG	C	401	14/15	0.80	0.34	-	81,85,89,90	0
3	NAG	D	401	14/15	0.80	0.33	-	75,82,86,86	0
3	NAG	D	402	14/15	0.67	0.39	-	84,90,94,95	0
3	NAG	C	402	14/15	0.66	0.37	-	71,79,87,91	0

6.5 Other polymers [i](#)

There are no such residues in this entry.