



Full wwPDB X-ray Structure Validation Report ⓘ

Feb 1, 2016 – 04:48 PM GMT

PDB ID : 4G87
Title : Crystal structure of GLMU from Mycobacterium tuberculosis snapshot 1
Authors : Jagtap, P.A.; Verma, S.K.; Prakash, B.
Deposited on : 2012-07-22
Resolution : 2.03 Å(reported)

This is a Full wwPDB X-ray Structure Validation Report for a publicly released PDB entry.
We welcome your comments at validation@mail.wwpdb.org
A user guide is available at
<http://wwpdb.org/validation/2016/XrayValidationReportHelp>
with specific help available everywhere you see the ⓘ symbol.

The following versions of software and data (see [references ⓘ](#)) were used in the production of this report:

MolProbity : 4.02b-467
Mogul : 1.7 (RC4), CSD as536be (2015)
Xtriage (Phenix) : 1.9-1692
EDS : rb-20026688
Percentile statistics : 20151230.v01 (using entries in the PDB archive December 30th 2015)
Refmac : 5.8.0135
CCP4 : 6.5.0
Ideal geometry (proteins) : Engh & Huber (2001)
Ideal geometry (DNA, RNA) : Parkinson et al. (1996)
Validation Pipeline (wwPDB-VP) : trunk26865

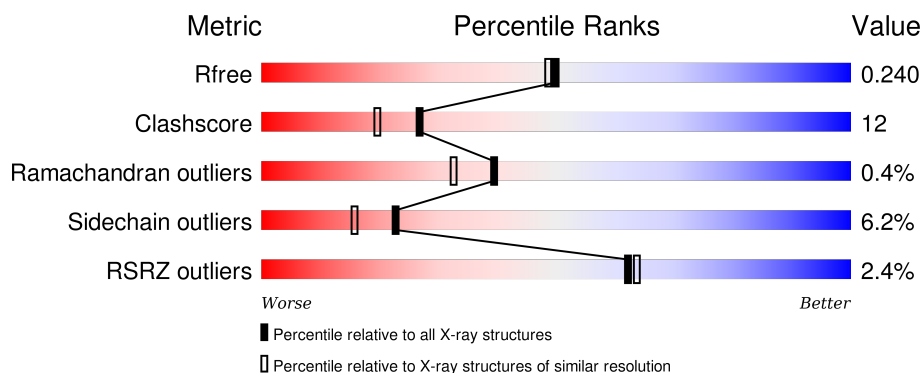
1 Overall quality at a glance

The following experimental techniques were used to determine the structure:

X-RAY DIFFRACTION

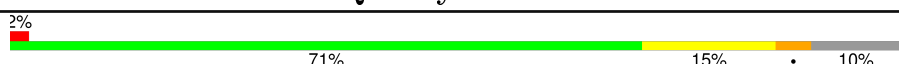
The reported resolution of this entry is 2.03 Å.

Percentile scores (ranging between 0-100) for global validation metrics of the entry are shown in the following graphic. The table shows the number of entries on which the scores are based.



Metric	Whole archive (#Entries)	Similar resolution (#Entries, resolution range(Å))
R_{free}	91344	7858 (2.04-2.00)
Clashscore	102246	9060 (2.04-2.00)
Ramachandran outliers	100387	8952 (2.04-2.00)
Sidechain outliers	100360	8951 (2.04-2.00)
RSRZ outliers	91569	7873 (2.04-2.00)

The table below summarises the geometric issues observed across the polymeric chains and their fit to the electron density. The red, orange, yellow and green segments on the lower bar indicate the fraction of residues that contain outliers for ≥ 3 , 2, 1 and 0 types of geometric quality criteria. A grey segment represents the fraction of residues that are not modelled. The numeric value for each fraction is indicated below the corresponding segment, with a dot representing fractions $\leq 5\%$. The upper red bar (where present) indicates the fraction of residues that have poor fit to the electron density. The numeric value is given above the bar.

Mol	Chain	Length	Quality of chain
1	A	501	

2 Entry composition

There are 6 unique types of molecules in this entry. The entry contains 3832 atoms, of which 0 are hydrogens and 0 are deuteriums.

In the tables below, the ZeroOcc column contains the number of atoms modelled with zero occupancy, the AltConf column contains the number of residues with at least one atom in alternate conformation and the Trace column contains the number of residues modelled with at most 2 atoms.

- Molecule 1 is a protein called Bifunctional protein GlmU.

Mol	Chain	Residues	Atoms					ZeroOcc	AltConf	Trace
1	A	452	Total	C	N	O	S	0	0	0
			3309	2050	601	652	6			

There are 6 discrepancies between the modelled and reference sequences:

Chain	Residue	Modelled	Actual	Comment	Reference
A	-5	HIS	-	EXPRESSION TAG	UNP P96382
A	-4	HIS	-	EXPRESSION TAG	UNP P96382
A	-3	HIS	-	EXPRESSION TAG	UNP P96382
A	-2	HIS	-	EXPRESSION TAG	UNP P96382
A	-1	HIS	-	EXPRESSION TAG	UNP P96382
A	0	HIS	-	EXPRESSION TAG	UNP P96382

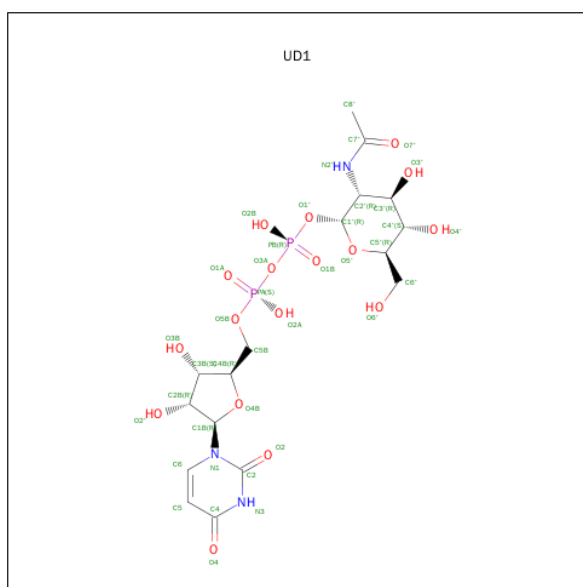
- Molecule 2 is MAGNESIUM ION (three-letter code: MG) (formula: Mg).

Mol	Chain	Residues	Atoms		ZeroOcc	AltConf
2	A	2	Total	Mg	0	0
			2	2		

- Molecule 3 is COBALT (II) ION (three-letter code: CO) (formula: Co).

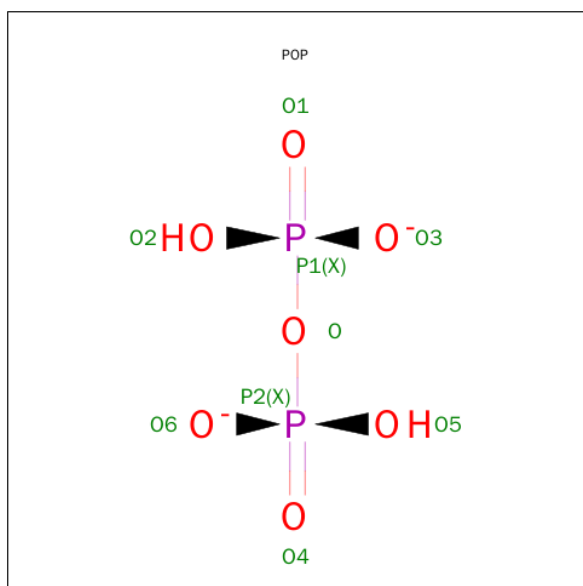
Mol	Chain	Residues	Atoms		ZeroOcc	AltConf
3	A	2	Total	Co	0	0
			2	2		

- Molecule 4 is URIDINE-DIPHOSPHATE-N-ACETYLGLUCOSAMINE (three-letter code: UD1) (formula: C₁₇H₂₇N₃O₁₇P₂).



Mol	Chain	Residues	Atoms					ZeroOcc	AltConf
4	A	1	Total	C	N	O	P	0	0
			39	17	3	17	2		

- Molecule 5 is PYROPHOSPHATE 2- (three-letter code: POP) (formula: $\text{H}_2\text{O}_7\text{P}_2$).

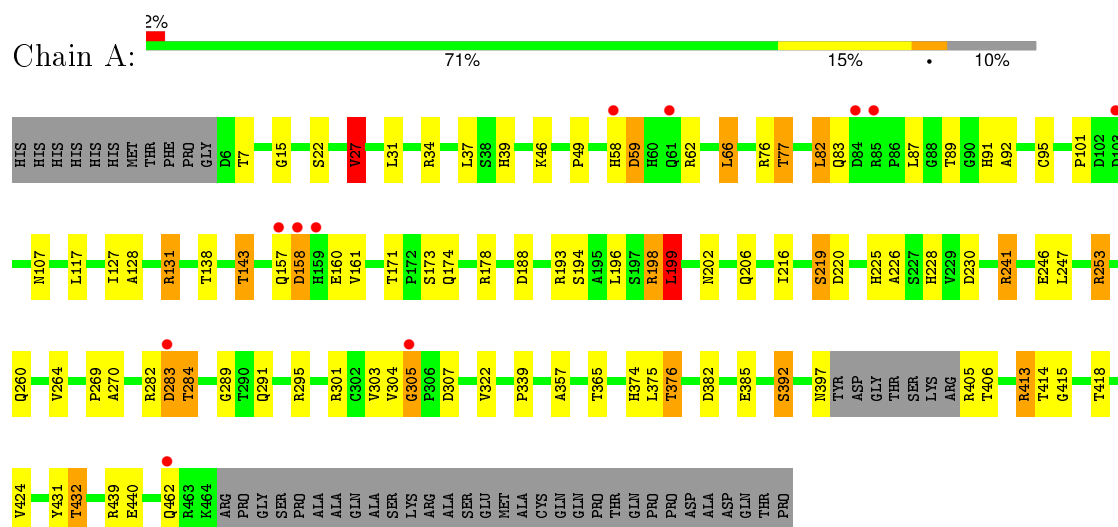


Mol	Chain	Residues	Atoms			ZeroOcc	AltConf
5	A	1	Total	O	P	0	0
			9	7	2		

- Molecule 6 is water.

Mol	Chain	Residues	Atoms		ZeroOcc	AltConf
6	A	471	Total 471	O 471	0	0

- Molecule 1: Bifunctional protein GlmU



4 Data and refinement statistics

Property	Value	Source
Space group	H 3	Depositor
Cell constants a, b, c, α , β , γ	77.00Å 77.00Å 276.73Å 90.00° 90.00° 120.00°	Depositor
Resolution (Å)	18.84 – 2.03 18.84 – 2.03	Depositor EDS
% Data completeness (in resolution range)	97.0 (18.84-2.03) 97.0 (18.84-2.03)	Depositor EDS
R_{merge}	0.11	Depositor
R_{sym}	(Not available)	Depositor
$\langle I/\sigma(I) \rangle$ ¹	1.20 (at 2.02Å)	Xtriage
Refinement program	REFMAC 5.5.0109	Depositor
R, R_{free}	0.178 , 0.235 0.186 , 0.240	Depositor DCC
R_{free} test set	995 reflections (2.65%)	DCC
Wilson B-factor (Å ²)	25.3	Xtriage
Anisotropy	0.102	Xtriage
Bulk solvent k_{sol} (e/Å ³), B_{sol} (Å ²)	0.38 , 52.4	EDS
Estimated twinning fraction	0.034 for -h-k,k,-l	Xtriage
L-test for twinning ²	$\langle L \rangle = 0.50$, $\langle L^2 \rangle = 0.33$	Xtriage
Outliers	0 of 38570 reflections	Xtriage
F_o, F_c correlation	0.95	EDS
Total number of atoms	3832	wwPDB-VP
Average B, all atoms (Å ²)	28.0	wwPDB-VP

Xtriage's analysis on translational NCS is as follows: *The largest off-origin peak in the Patterson function is 7.65% of the height of the origin peak. No significant pseudotranslation is detected.*

¹Intensities estimated from amplitudes.

²Theoretical values of $\langle |L| \rangle$, $\langle L^2 \rangle$ for acentric reflections are 0.5, 0.375 respectively for untwinned datasets, and 0.333, 0.2 for perfectly twinned datasets.

5 Model quality

5.1 Standard geometry

Bond lengths and bond angles in the following residue types are not validated in this section: MG, UD1, CO, POP

The Z score for a bond length (or angle) is the number of standard deviations the observed value is removed from the expected value. A bond length (or angle) with $|Z| > 5$ is considered an outlier worth inspection. RMSZ is the root-mean-square of all Z scores of the bond lengths (or angles).

Mol	Chain	Bond lengths		Bond angles	
		RMSZ	$\# Z > 5$	RMSZ	$\# Z > 5$
1	A	1.08	5/3359 (0.1%)	1.00	14/4592 (0.3%)

Chiral center outliers are detected by calculating the chiral volume of a chiral center and verifying if the center is modelled as a planar moiety or with the opposite hand. A planarity outlier is detected by checking planarity of atoms in a peptide group, atoms in a mainchain group or atoms of a sidechain that are expected to be planar.

Mol	Chain	#Chirality outliers	#Planarity outliers
1	A	0	1

All (5) bond length outliers are listed below:

Mol	Chain	Res	Type	Atoms	Z	Observed(Å)	Ideal(Å)
1	A	246	GLU	CG-CD	7.69	1.63	1.51
1	A	246	GLU	CD-OE2	6.27	1.32	1.25
1	A	270	ALA	CA-CB	5.92	1.64	1.52
1	A	303	VAL	CB-CG1	5.25	1.63	1.52
1	A	92	ALA	CA-CB	5.24	1.63	1.52

All (14) bond angle outliers are listed below:

Mol	Chain	Res	Type	Atoms	Z	Observed(°)	Ideal(°)
1	A	241	ARG	NE-CZ-NH2	-11.03	114.78	120.30
1	A	241	ARG	NE-CZ-NH1	8.47	124.54	120.30
1	A	198	ARG	NE-CZ-NH1	7.71	124.15	120.30
1	A	198	ARG	NE-CZ-NH2	-7.49	116.55	120.30
1	A	27	VAL	CG1-CB-CG2	6.60	121.45	110.90
1	A	301	ARG	NE-CZ-NH2	-6.20	117.20	120.30
1	A	301	ARG	NE-CZ-NH1	5.93	123.27	120.30
1	A	253	ARG	NE-CZ-NH1	5.67	123.14	120.30

Continued on next page...

Continued from previous page...

Mol	Chain	Res	Type	Atoms	Z	Observed(°)	Ideal(°)
1	A	193	ARG	NE-CZ-NH1	5.54	123.07	120.30
1	A	305	GLY	N-CA-C	-5.49	99.38	113.10
1	A	66	LEU	CB-CG-CD2	5.26	119.95	111.00
1	A	199	LEU	CB-CG-CD1	5.20	119.84	111.00
1	A	406	THR	N-CA-C	-5.13	97.15	111.00
1	A	82	LEU	CB-CG-CD1	5.12	119.71	111.00

There are no chirality outliers.

All (1) planarity outliers are listed below:

Mol	Chain	Res	Type	Group
1	A	304	VAL	Peptide

5.2 Too-close contacts ⓘ

In the following table, the Non-H and H(model) columns list the number of non-hydrogen atoms and hydrogen atoms in the chain respectively. The H(added) column lists the number of hydrogen atoms added and optimized by MolProbity. The Clashes column lists the number of clashes within the asymmetric unit, whereas Symm-Clashes lists symmetry related clashes.

Mol	Chain	Non-H	H(model)	H(added)	Clashes	Symm-Clashes
1	A	3309	0	3314	81	0
2	A	2	0	0	0	1
3	A	2	0	0	0	0
4	A	39	0	25	1	0
5	A	9	0	0	1	0
6	A	471	0	0	34	3
All	All	3832	0	3339	81	4

The all-atom clashscore is defined as the number of clashes found per 1000 atoms (including hydrogen atoms). The all-atom clashscore for this structure is 12.

All (81) close contacts within the same asymmetric unit are listed below, sorted by their clash magnitude.

Atom-1	Atom-2	Interatomic distance (Å)	Clash overlap (Å)
1:A:128:ALA:HA	6:A:983:HOH:O	1.27	1.33
1:A:202:ASN:HB3	6:A:640:HOH:O	1.39	1.19
1:A:143:THR:HG22	1:A:228:HIS:HE1	1.09	1.16
1:A:62:ARG:HD2	6:A:759:HOH:O	1.56	1.02

Continued on next page...

Continued from previous page...

Atom-1	Atom-2	Interatomic distance (Å)	Clash overlap (Å)
1:A:128:ALA:CA	6:A:983:HOH:O	1.93	1.01
1:A:143:THR:CG2	1:A:228:HIS:HE1	1.74	0.99
1:A:95:CYS:SG	6:A:876:HOH:O	2.20	0.99
1:A:143:THR:HG22	1:A:228:HIS:CE1	1.97	0.99
1:A:415:GLY:H	1:A:432:THR:HG22	1.28	0.97
1:A:365:THR:HB	6:A:849:HOH:O	0.77	0.94
1:A:128:ALA:C	6:A:983:HOH:O	2.02	0.94
1:A:143:THR:CG2	1:A:228:HIS:CE1	2.53	0.91
1:A:282:ARG:O	1:A:283:ASP:HB2	1.71	0.89
1:A:397:ASN:C	6:A:987:HOH:O	2.08	0.89
1:A:107:ASN:OD1	6:A:1013:HOH:O	1.94	0.85
1:A:171:THR:H	1:A:174:GLN:HE21	1.25	0.84
1:A:128:ALA:O	6:A:983:HOH:O	1.95	0.83
1:A:59:ASP:HB2	6:A:804:HOH:O	1.77	0.82
1:A:76:ARG:NH1	1:A:77:THR:O	2.14	0.79
1:A:374:HIS:O	1:A:376:THR:HG23	1.83	0.79
1:A:58:HIS:O	1:A:59:ASP:HB2	1.84	0.75
1:A:216:ILE:O	1:A:219:SER:HB2	1.87	0.74
1:A:405:ARG:C	6:A:780:HOH:O	2.26	0.72
1:A:77:THR:HG23	6:A:864:HOH:O	1.90	0.72
1:A:253:ARG:HD2	6:A:1017:HOH:O	1.90	0.72
1:A:83:GLN:HE21	1:A:91:HIS:HD2	1.37	0.70
1:A:374:HIS:O	1:A:376:THR:CG2	2.40	0.70
1:A:59:ASP:CB	6:A:804:HOH:O	2.38	0.69
1:A:15:GLY:HA3	5:A:506:POP:O3	1.95	0.67
1:A:107:ASN:ND2	6:A:979:HOH:O	2.24	0.66
1:A:462:GLN:HG2	6:A:775:HOH:O	1.97	0.64
1:A:405:ARG:HA	6:A:776:HOH:O	1.99	0.62
1:A:31:LEU:O	1:A:39:HIS:HE1	1.82	0.61
1:A:415:GLY:N	1:A:432:THR:HG22	2.10	0.61
1:A:171:THR:H	1:A:174:GLN:NE2	1.98	0.60
1:A:49:PRO:O	1:A:76:ARG:NH2	2.34	0.59
1:A:143:THR:HG23	1:A:228:HIS:CE1	2.34	0.59
1:A:101:PRO:HD3	6:A:831:HOH:O	2.03	0.59
1:A:439:ARG:NH2	6:A:719:HOH:O	2.27	0.58
1:A:228:HIS:HD2	1:A:230:ASP:OD1	1.88	0.57
1:A:160:GLU:OE1	6:A:973:HOH:O	2.17	0.57
1:A:83:GLN:HE21	1:A:91:HIS:CD2	2.21	0.56
1:A:62:ARG:O	1:A:66:LEU:CD1	2.54	0.56
1:A:418:THR:OG1	1:A:432:THR:CG2	2.54	0.55
1:A:39:HIS:HD2	6:A:700:HOH:O	1.89	0.55

Continued on next page...

Continued from previous page...

Atom-1	Atom-2	Interatomic distance (Å)	Clash overlap (Å)
1:A:131:ARG:HB2	6:A:983:HOH:O	2.06	0.54
1:A:382:ASP:OD1	6:A:849:HOH:O	2.19	0.53
1:A:7:THR:HG22	6:A:979:HOH:O	2.07	0.53
1:A:305:GLY:HA3	1:A:322:VAL:HG22	1.91	0.53
1:A:375:LEU:O	1:A:392:SER:HA	2.09	0.52
1:A:198:ARG:NE	6:A:1034:HOH:O	1.79	0.51
1:A:385:GLU:OE1	6:A:965:HOH:O	2.19	0.50
1:A:418:THR:OG1	1:A:432:THR:HG21	2.12	0.49
1:A:194:SER:O	1:A:198:ARG:HD3	2.13	0.49
1:A:283:ASP:O	1:A:284:THR:C	2.50	0.49
1:A:413:ARG:O	1:A:431:TYR:HA	2.13	0.49
1:A:58:HIS:O	1:A:59:ASP:CB	2.52	0.48
1:A:198:ARG:CG	6:A:1034:HOH:O	2.61	0.47
1:A:46:LYS:NZ	6:A:937:HOH:O	2.47	0.47
1:A:31:LEU:HD23	1:A:31:LEU:N	2.30	0.47
1:A:339:PRO:O	1:A:357:ALA:HA	2.15	0.47
1:A:89:THR:CG2	4:A:505:UD1:H5'2	2.46	0.46
1:A:188:ASP:HA	6:A:1013:HOH:O	2.15	0.46
1:A:161:VAL:HG21	1:A:226:ALA:HB2	1.97	0.46
1:A:27:VAL:HG13	1:A:37:LEU:HB2	1.98	0.46
1:A:34:ARG:HB2	1:A:39:HIS:CE1	2.52	0.45
1:A:282:ARG:O	1:A:283:ASP:CB	2.52	0.45
1:A:405:ARG:O	6:A:780:HOH:O	2.21	0.45
1:A:7:THR:HG21	1:A:127:ILE:HD13	1.99	0.44
1:A:138:THR:HA	1:A:225:HIS:O	2.18	0.44
1:A:414:THR:HA	1:A:432:THR:HB	2.00	0.43
1:A:289:GLY:O	1:A:307:ASP:HA	2.18	0.43
1:A:260:GLN:HA	1:A:264:VAL:O	2.20	0.42
1:A:117:LEU:HD22	1:A:247:LEU:HD22	2.02	0.42
1:A:206:GLN:NE2	6:A:852:HOH:O	2.47	0.42
1:A:413:ARG:NE	6:A:837:HOH:O	2.15	0.42
1:A:374:HIS:O	1:A:376:THR:HG22	2.19	0.41
1:A:22:SER:HB2	1:A:241:ARG:NH2	2.35	0.41
1:A:198:ARG:HH22	1:A:220:ASP:CG	2.23	0.40
1:A:196:LEU:HA	1:A:199:LEU:HD22	2.02	0.40
1:A:158:ASP:N	6:A:817:HOH:O	2.51	0.40

All (4) symmetry-related close contacts are listed below. The label for Atom-2 includes the symmetry operator and encoded unit-cell translations to be applied.

Atom-1	Atom-2	Interatomic distance (Å)	Clash overlap (Å)
2:A:501:MG:MG	2:A:501:MG:MG[3_555]	1.00	1.20
6:A:773:HOH:O	6:A:1038:HOH:O[3_555]	1.69	0.51
6:A:998:HOH:O	6:A:1028:HOH:O[3_555]	1.79	0.41
6:A:728:HOH:O	6:A:985:HOH:O[3_555]	1.85	0.35

5.3 Torsion angles [i](#)

5.3.1 Protein backbone [i](#)

In the following table, the Percentiles column shows the percent Ramachandran outliers of the chain as a percentile score with respect to all X-ray entries followed by that with respect to entries of similar resolution.

The Analysed column shows the number of residues for which the backbone conformation was analysed, and the total number of residues.

Mol	Chain	Analysed	Favoured	Allowed	Outliers	Percentiles
1	A	448/501 (89%)	436 (97%)	10 (2%)	2 (0%)	39 32

All (2) Ramachandran outliers are listed below:

Mol	Chain	Res	Type
1	A	283	ASP
1	A	284	THR

5.3.2 Protein sidechains [i](#)

In the following table, the Percentiles column shows the percent sidechain outliers of the chain as a percentile score with respect to all X-ray entries followed by that with respect to entries of similar resolution.

The Analysed column shows the number of residues for which the sidechain conformation was analysed, and the total number of residues.

Mol	Chain	Analysed	Rotameric	Outliers	Percentiles
1	A	354/394 (90%)	332 (94%)	22 (6%)	23 16

All (22) residues with a non-rotameric sidechain are listed below:

Mol	Chain	Res	Type
1	A	27	VAL

Continued on next page...

Continued from previous page...

Mol	Chain	Res	Type
1	A	59	ASP
1	A	77	THR
1	A	82	LEU
1	A	87	LEU
1	A	131	ARG
1	A	143	THR
1	A	157	GLN
1	A	158	ASP
1	A	173	SER
1	A	178	ARG
1	A	199	LEU
1	A	219	SER
1	A	269	PRO
1	A	291	GLN
1	A	295	ARG
1	A	376	THR
1	A	392	SER
1	A	413	ARG
1	A	424	VAL
1	A	432	THR
1	A	440	GLU

Some sidechains can be flipped to improve hydrogen bonding and reduce clashes. All (9) such sidechains are listed below:

Mol	Chain	Res	Type
1	A	39	HIS
1	A	58	HIS
1	A	91	HIS
1	A	157	GLN
1	A	174	GLN
1	A	206	GLN
1	A	228	HIS
1	A	287	HIS
1	A	291	GLN

5.3.3 RNA ⓘ

There are no RNA molecules in this entry.

5.4 Non-standard residues in protein, DNA, RNA chains ⓘ

There are no non-standard protein/DNA/RNA residues in this entry.

5.5 Carbohydrates ⓘ

There are no carbohydrates in this entry.

5.6 Ligand geometry ⓘ

Of 6 ligands modelled in this entry, 4 are monoatomic - leaving 2 for Mogul analysis.

In the following table, the Counts columns list the number of bonds (or angles) for which Mogul statistics could be retrieved, the number of bonds (or angles) that are observed in the model and the number of bonds (or angles) that are defined in the chemical component dictionary. The Link column lists molecule types, if any, to which the group is linked. The Z score for a bond length (or angle) is the number of standard deviations the observed value is removed from the expected value. A bond length (or angle) with $|Z| > 2$ is considered an outlier worth inspection. RMSZ is the root-mean-square of all Z scores of the bond lengths (or angles).

Mol	Type	Chain	Res	Link	Bond lengths			Bond angles		
					Counts	RMSZ	$\# Z > 2$	Counts	RMSZ	$\# Z > 2$
4	UD1	A	505	3,2	32,41,41	0.54	0	46,62,62	1.40	2 (4%)
5	POP	A	506	2	8,8,8	0.53	0	13,13,13	1.40	1 (7%)

In the following table, the Chirals column lists the number of chiral outliers, the number of chiral centers analysed, the number of these observed in the model and the number defined in the chemical component dictionary. Similar counts are reported in the Torsion and Rings columns. '-' means no outliers of that kind were identified.

Mol	Type	Chain	Res	Link	Chirals	Torsions	Rings
4	UD1	A	505	3,2	-	0/22/63/63	0/3/3/3
5	POP	A	506	2	-	0/6/6/6	0/0/0/0

There are no bond length outliers.

All (3) bond angle outliers are listed below:

Mol	Chain	Res	Type	Atoms	Z	Observed(°)	Ideal(°)
4	A	505	UD1	PB-O3A-PA	-4.36	120.48	132.73
5	A	506	POP	P2-O-P1	-4.35	120.51	132.73
4	A	505	UD1	C4-N3-C2	6.59	120.67	114.14

There are no chirality outliers.

There are no torsion outliers.

There are no ring outliers.

2 monomers are involved in 2 short contacts:

Mol	Chain	Res	Type	Clashes	Symm-Clashes
4	A	505	UD1	1	0
5	A	506	POP	1	0

5.7 Other polymers [i](#)

There are no such residues in this entry.

5.8 Polymer linkage issues [i](#)

There are no chain breaks in this entry.

6 Fit of model and data [i](#)

6.1 Protein, DNA and RNA chains [i](#)

In the following table, the column labelled ‘#RSRZ> 2’ contains the number (and percentage) of RSRZ outliers, followed by percent RSRZ outliers for the chain as percentile scores relative to all X-ray entries and entries of similar resolution. The OWAB column contains the minimum, median, 95th percentile and maximum values of the occupancy-weighted average B-factor per residue. The column labelled ‘Q< 0.9’ lists the number of (and percentage) of residues with an average occupancy less than 0.9.

Mol	Chain	Analysed	<RSRZ>	#RSRZ>2	OWAB(Å ²)	Q<0.9
1	A	452/501 (90%)	-0.22	11 (2%) 62 64	15, 24, 43, 63	0

All (11) RSRZ outliers are listed below:

Mol	Chain	Res	Type	RSRZ
1	A	283	ASP	4.2
1	A	58	HIS	4.2
1	A	157	GLN	4.2
1	A	159	HIS	4.1
1	A	158	ASP	3.8
1	A	305	GLY	3.0
1	A	462	GLN	3.0
1	A	103	ASP	2.7
1	A	84	ASP	2.4
1	A	61	GLN	2.1
1	A	85	ARG	2.0

6.2 Non-standard residues in protein, DNA, RNA chains [i](#)

There are no non-standard protein/DNA/RNA residues in this entry.

6.3 Carbohydrates [i](#)

There are no carbohydrates in this entry.

6.4 Ligands [i](#)

In the following table, the Atoms column lists the number of modelled atoms in the group and the number defined in the chemical component dictionary. LLDF column lists the quality of electron density of the group with respect to its neighbouring residues in protein, DNA or RNA chains.

The B-factors column lists the minimum, median, 95th percentile and maximum values of B factors of atoms in the group. The column labelled 'Q< 0.9' lists the number of atoms with occupancy less than 0.9.

Mol	Type	Chain	Res	Atoms	RSCC	RSR	LLDF	B-factors(Å ²)	Q<0.9
5	POP	A	506	9/9	0.96	0.11	1.43	20,25,27,29	4
4	UD1	A	505	39/39	0.90	0.13	0.85	5,20,28,34	0
2	MG	A	504	1/1	0.87	0.11	-	40,40,40,40	0
3	CO	A	503	1/1	0.99	0.08	-	33,33,33,33	1
3	CO	A	502	1/1	0.98	0.04	-	46,46,46,46	0
2	MG	A	501	1/1	1.00	0.08	-	37,37,37,37	0

6.5 Other polymers [i](#)

There are no such residues in this entry.