



wwPDB X-ray Structure Validation Summary Report ⓘ

Feb 1, 2016 – 04:50 PM GMT

PDB ID : 4G9I
Title : Crystal structure of T.kodakarensis HypF
Authors : Tominaga, T.; Watanabe, S.; Matsumi, R.; Atomi, H.; Imanaka, T.; Miki, K.
Deposited on : 2012-07-24
Resolution : 4.50 Å(reported)

This is a wwPDB X-ray Structure Validation Summary Report for a publicly released PDB entry.
We welcome your comments at validation@mail.wwpdb.org
A user guide is available at
<http://wwpdb.org/validation/2016/XrayValidationReportHelp>
with specific help available everywhere you see the ⓘ symbol.

The following versions of software and data (see [references ⓘ](#)) were used in the production of this report:

MolProbity : 4.02b-467
Mogul : 1.7 (RC4), CSD as536be (2015)
Xtriage (Phenix) : 1.9-1692
EDS : rb-20026688
Percentile statistics : 20151230.v01 (using entries in the PDB archive December 30th 2015)
Refmac : 5.8.0135
CCP4 : 6.5.0
Ideal geometry (proteins) : Engh & Huber (2001)
Ideal geometry (DNA, RNA) : Parkinson et al. (1996)
Validation Pipeline (wwPDB-VP) : trunk26865

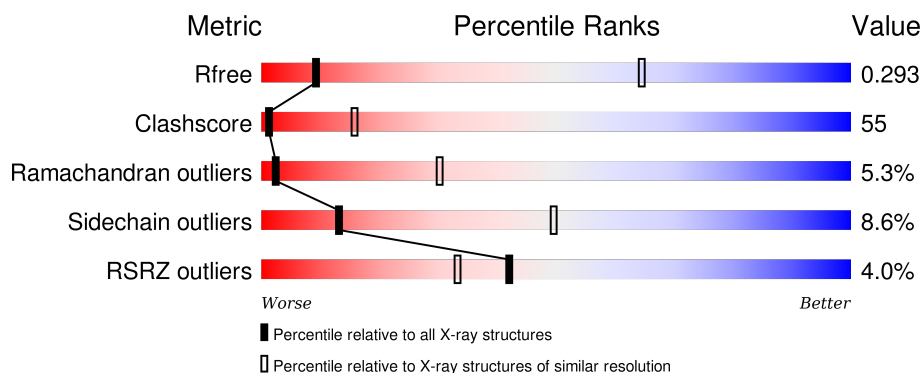
1 Overall quality at a glance

The following experimental techniques were used to determine the structure:

X-RAY DIFFRACTION

The reported resolution of this entry is 4.50 Å.

Percentile scores (ranging between 0-100) for global validation metrics of the entry are shown in the following graphic. The table shows the number of entries on which the scores are based.



Metric	Whole archive (#Entries)	Similar resolution (#Entries, resolution range(Å))
R_{free}	91344	1071 (5.40-3.60)
Clashscore	102246	1003 (5.30-3.62)
Ramachandran outliers	100387	1117 (5.40-3.60)
Sidechain outliers	100360	1099 (5.40-3.60)
RSRZ outliers	91569	1075 (5.40-3.60)

The table below summarises the geometric issues observed across the polymeric chains and their fit to the electron density. The red, orange, yellow and green segments on the lower bar indicate the fraction of residues that contain outliers for ≥ 3 , 2, 1 and 0 types of geometric quality criteria. A grey segment represents the fraction of residues that are not modelled. The numeric value for each fraction is indicated below the corresponding segment, with a dot representing fractions $\leq 5\%$. The upper red bar (where present) indicates the fraction of residues that have poor fit to the electron density. The numeric value is given above the bar.

Mol	Chain	Length	Quality of chain
1	A	772	<div> <div>2%</div> <div>25% 64% 9% ..</div> </div>
1	B	772	<div> <div>5%</div> <div>26% 63% 9% .</div> </div>
1	C	772	<div> <div>2%</div> <div>29% 60% 9% .</div> </div>
1	D	772	<div> <div>4%</div> <div>28% 63% 8% .</div> </div>
1	E	772	<div> <div>5%</div> <div>27% 63% 8% .</div> </div>

Continued on next page...

Continued from previous page...

Mol	Chain	Length	Quality of chain
1	F	772	<div><div></div><div>4%</div><div>27%</div><div>64%</div><div>7%</div><div></div></div>

2 Entry composition

There are 2 unique types of molecules in this entry. The entry contains 36065 atoms, of which 0 are hydrogens and 0 are deuteriums.

In the tables below, the ZeroOcc column contains the number of atoms modelled with zero occupancy, the AltConf column contains the number of residues with at least one atom in alternate conformation and the Trace column contains the number of residues modelled with at most 2 atoms.

- Molecule 1 is a protein called Hydrogenase maturation protein HypF.

Mol	Chain	Residues	Atoms						ZeroOcc	AltConf	Trace
1	A	766	Total	C	N	O	S	Se	0	0	0
			6032	3862	1028	1113	11	18			
1	B	762	Total	C	N	O	S	Se	0	0	0
			6008	3847	1024	1108	11	18			
1	C	756	Total	C	N	O	S	Se	0	0	0
			5964	3819	1017	1100	11	17			
1	D	765	Total	C	N	O	S	Se	0	0	0
			6027	3859	1027	1112	11	18			
1	E	762	Total	C	N	O	S	Se	0	0	0
			6008	3847	1024	1108	11	18			
1	F	762	Total	C	N	O	S	Se	0	0	0
			6008	3847	1024	1108	11	18			

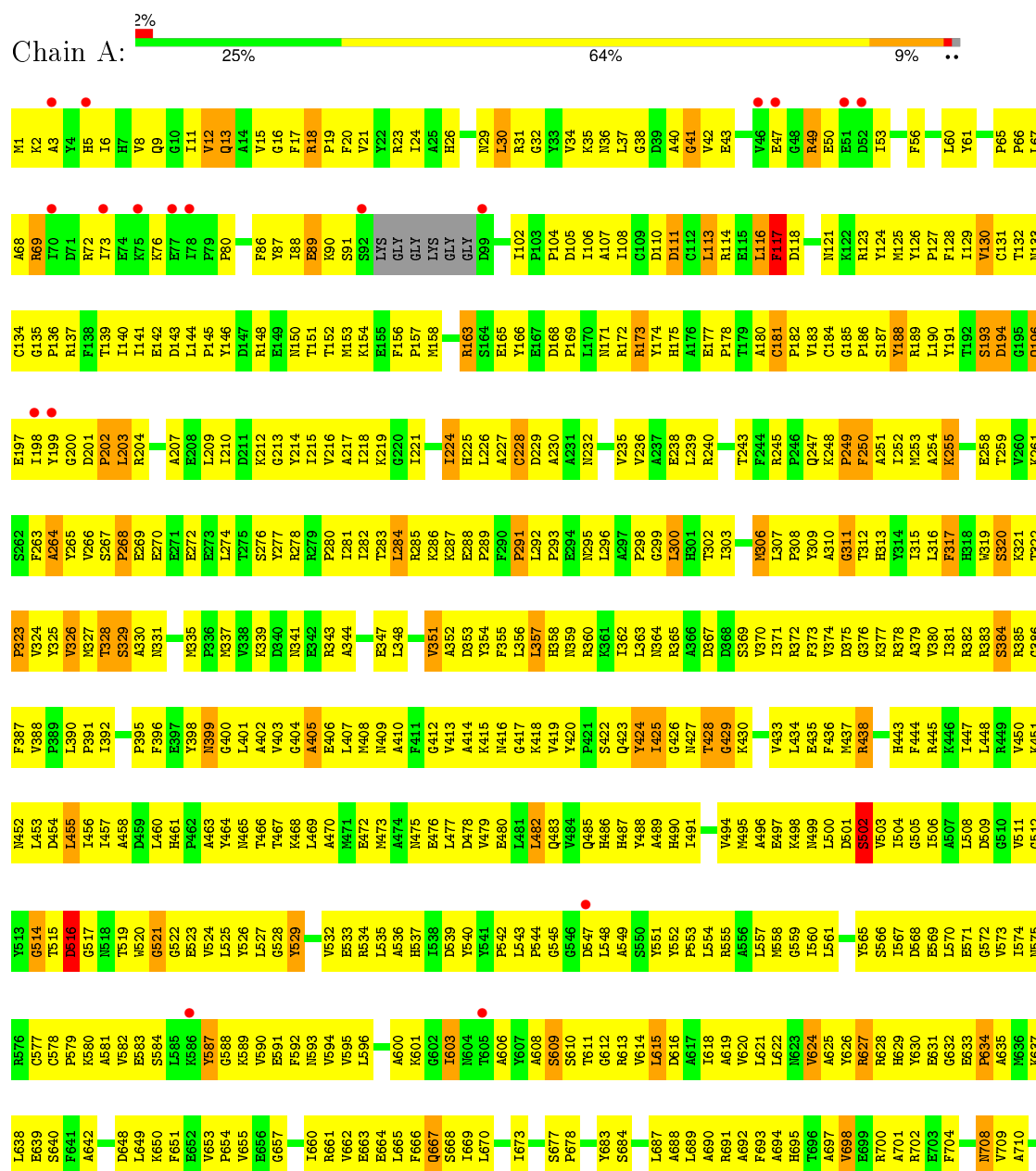
- Molecule 2 is ZINC ION (three-letter code: ZN) (formula: Zn).

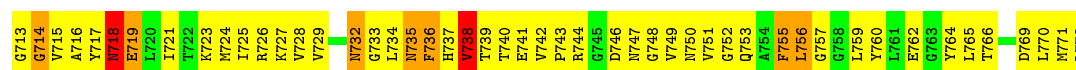
Mol	Chain	Residues	Atoms		ZeroOcc	AltConf
2	D	3	Total	Zn	0	0
			3	3		
2	E	3	Total	Zn	0	0
			3	3		
2	B	3	Total	Zn	0	0
			3	3		
2	C	3	Total	Zn	0	0
			3	3		
2	A	3	Total	Zn	0	0
			3	3		
2	F	3	Total	Zn	0	0
			3	3		

3 Residue-property plots

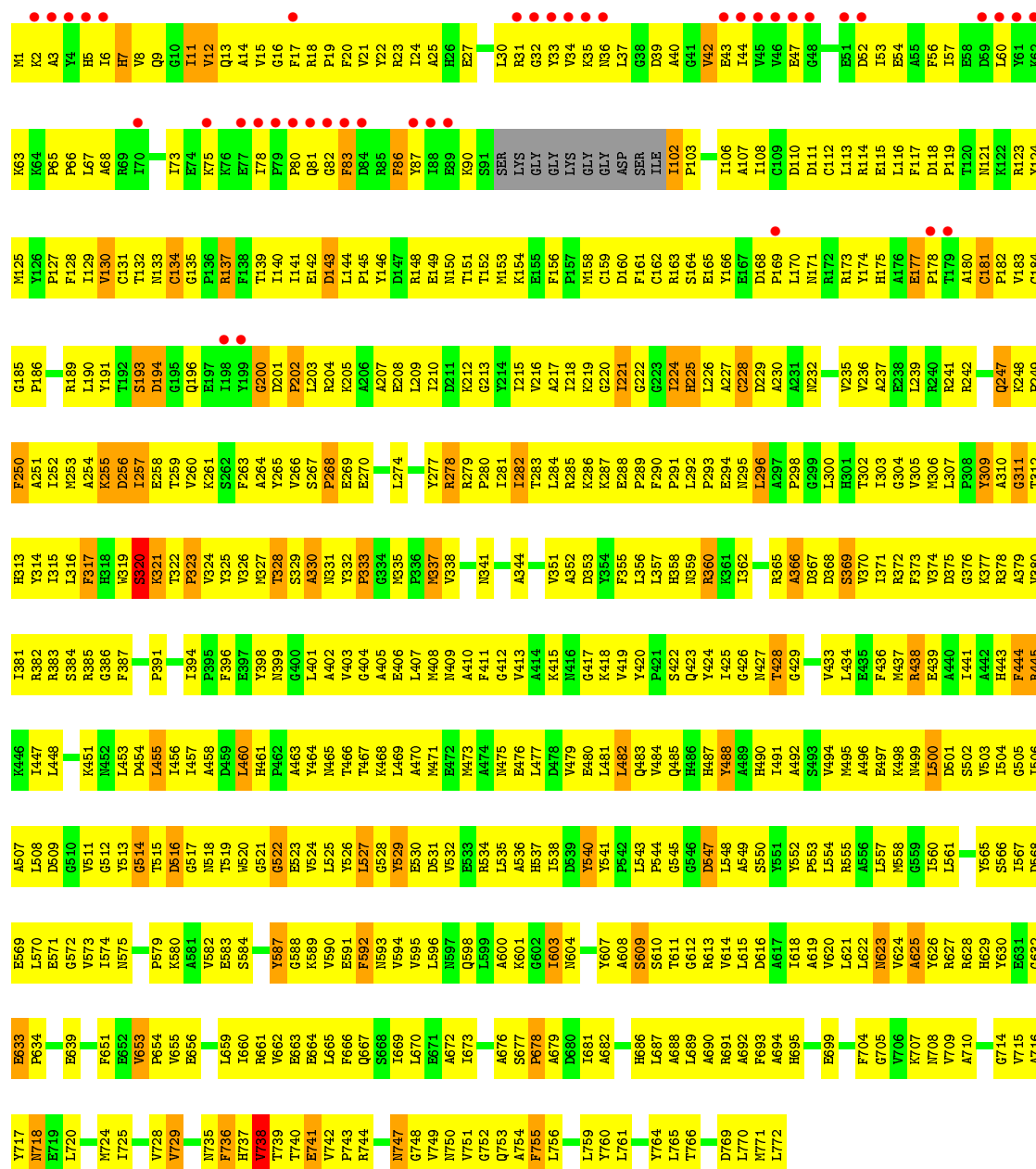
These plots are drawn for all protein, RNA and DNA chains in the entry. The first graphic for a chain summarises the proportions of errors displayed in the second graphic. The second graphic shows the sequence view annotated by issues in geometry and electron density. Residues are color-coded according to the number of geometric quality criteria for which they contain at least one outlier: green = 0, yellow = 1, orange = 2 and red = 3 or more. A red dot above a residue indicates a poor fit to the electron density ($RSRZ > 2$). Stretches of 2 or more consecutive residues without any outlier are shown as a green connector. Residues present in the sample, but not in the model, are shown in grey.

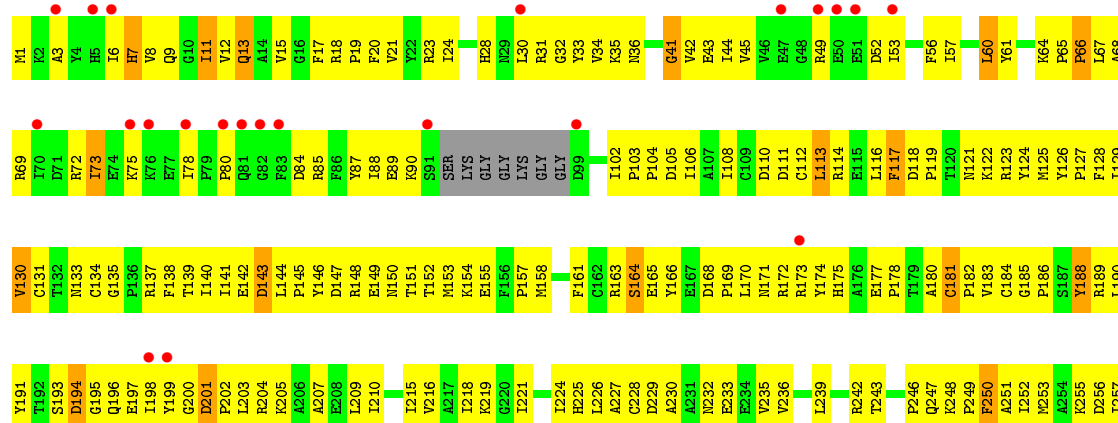
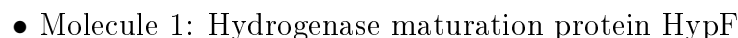
● Molecule 1: Hydrogenase maturation protein HypF

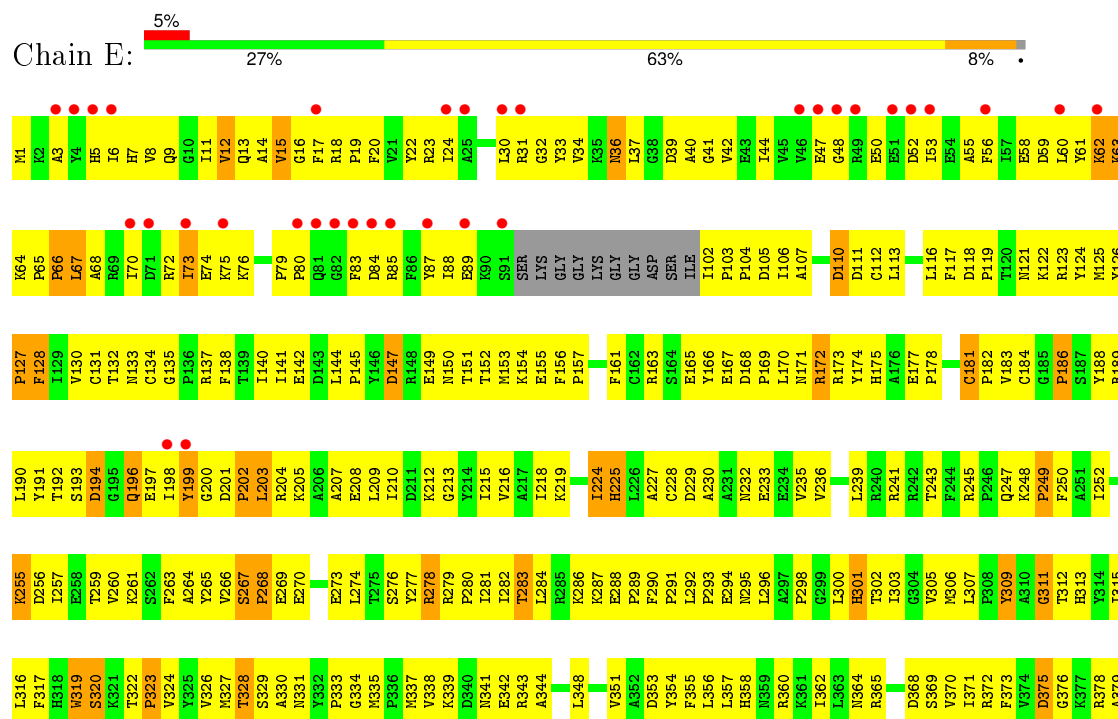
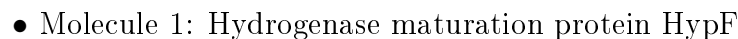




● Molecule 1: Hydrogenase maturation protein HypF











4 Data and refinement statistics

Property	Value	Source
Space group	P 65 2 2	Depositor
Cell constants a, b, c, α , β , γ	265.81Å 265.81Å 693.71Å 90.00° 90.00° 120.00°	Depositor
Resolution (Å)	15.00 – 4.50 49.77 – 4.50	Depositor EDS
% Data completeness (in resolution range)	90.5 (15.00-4.50) 94.9 (49.77-4.50)	Depositor EDS
R_{merge}	(Not available)	Depositor
R_{sym}	0.17	Depositor
$\langle I/\sigma(I) \rangle$ ¹	3.46 (at 4.45Å)	Xtriage
Refinement program	CNS 1.3	Depositor
R, R_{free}	0.279 , 0.300 0.298 , 0.293	Depositor DCC
R_{free} test set	3991 reflections (5.01%)	DCC
Wilson B-factor (Å ²)	143.9	Xtriage
Anisotropy	0.170	Xtriage
Bulk solvent k_{sol} (e/Å ³), B_{sol} (Å ²)	0.31 , 154.4	EDS
Estimated twinning fraction	No twinning to report.	Xtriage
L-test for twinning ²	$\langle L \rangle = 0.52$, $\langle L^2 \rangle = 0.35$	Xtriage
Outliers	0 of 86313 reflections	Xtriage
F_o, F_c correlation	0.83	EDS
Total number of atoms	36065	wwPDB-VP
Average B, all atoms (Å ²)	186.0	wwPDB-VP

Xtriage's analysis on translational NCS is as follows: *The largest off-origin peak in the Patterson function is 1.63% of the height of the origin peak. No significant pseudotranslation is detected.*

¹Intensities estimated from amplitudes.

²Theoretical values of $\langle |L| \rangle$, $\langle L^2 \rangle$ for acentric reflections are 0.5, 0.375 respectively for untwinned datasets, and 0.333, 0.2 for perfectly twinned datasets.

5 Model quality [i](#)

5.1 Standard geometry [i](#)

Bond lengths and bond angles in the following residue types are not validated in this section: ZN

The Z score for a bond length (or angle) is the number of standard deviations the observed value is removed from the expected value. A bond length (or angle) with $|Z| > 5$ is considered an outlier worth inspection. RMSZ is the root-mean-square of all Z scores of the bond lengths (or angles).

Mol	Chain	Bond lengths		Bond angles	
		RMSZ	$\# Z > 5$	RMSZ	$\# Z > 5$
1	A	0.25	0/6151	0.49	0/8308
1	B	0.25	0/6127	0.49	1/8275 (0.0%)
1	C	0.25	0/6080	0.49	0/8208
1	D	0.25	0/6146	0.49	0/8301
1	E	0.25	0/6127	0.49	0/8275
1	F	0.25	0/6127	0.50	0/8275
All	All	0.25	0/36758	0.49	1/49642 (0.0%)

There are no bond length outliers.

All (1) bond angle outliers are listed below:

Mol	Chain	Res	Type	Atoms	Z	Observed($^{\circ}$)	Ideal($^{\circ}$)
1	B	200	GLY	N-CA-C	5.11	125.88	113.10

There are no chirality outliers.

There are no planarity outliers.

5.2 Too-close contacts [i](#)

In the following table, the Non-H and H(model) columns list the number of non-hydrogen atoms and hydrogen atoms in the chain respectively. The H(added) column lists the number of hydrogen atoms added and optimized by MolProbity. The Clashes column lists the number of clashes within the asymmetric unit, whereas Symm-Clashes lists symmetry related clashes.

Mol	Chain	Non-H	H(model)	H(added)	Clashes	Symm-Clashes
1	A	6032	0	5969	684	1
1	B	6008	0	5954	671	0
1	C	5964	0	5909	669	0
1	D	6027	0	5970	674	0

Continued on next page...

Continued from previous page...

Mol	Chain	Non-H	H(model)	H(added)	Clashes	Symm-Clashes
1	E	6008	0	5954	616	0
1	F	6008	0	5955	667	0
2	A	3	0	0	0	0
2	B	3	0	0	0	0
2	C	3	0	0	0	0
2	D	3	0	0	0	0
2	E	3	0	0	0	0
2	F	3	0	0	0	0
All	All	36065	0	35711	3925	1

The all-atom clashscore is defined as the number of clashes found per 1000 atoms (including hydrogen atoms). The all-atom clashscore for this structure is 55.

The worst 5 of 3925 close contacts within the same asymmetric unit are listed below, sorted by their clash magnitude.

Atom-1	Atom-2	Interatomic distance (Å)	Clash overlap (Å)
1:A:11:ILE:HG21	1:A:69:ARG:H	1.24	1.02
1:D:9:GLN:HE21	1:D:41:GLY:HA2	1.17	1.02
1:D:485:GLN:HE21	1:D:487:HIS:H	1.04	1.01
1:D:451:LYS:HA	1:D:477:LEU:HD21	1.41	0.99
1:F:394:ILE:HD11	1:F:419:VAL:HB	1.41	0.99

All (1) symmetry-related close contacts are listed below. The label for Atom-2 includes the symmetry operator and encoded unit-cell translations to be applied.

Atom-1	Atom-2	Interatomic distance (Å)	Clash overlap (Å)
1:A:204:ARG:NH1	1:A:204:ARG:NH1[12_554]	1.95	0.25

5.3 Torsion angles [i](#)

5.3.1 Protein backbone [i](#)

In the following table, the Percentiles column shows the percent Ramachandran outliers of the chain as a percentile score with respect to all X-ray entries followed by that with respect to entries of similar resolution.

The Analysed column shows the number of residues for which the backbone conformation was analysed, and the total number of residues.

Mol	Chain	Analysed	Favoured	Allowed	Outliers	Percentiles	
1	A	762/772 (99%)	530 (70%)	179 (24%)	53 (7%)	1	23
1	B	758/772 (98%)	565 (74%)	145 (19%)	48 (6%)	2	26
1	C	750/772 (97%)	540 (72%)	170 (23%)	40 (5%)	2	30
1	D	761/772 (99%)	580 (76%)	148 (19%)	33 (4%)	3	35
1	E	758/772 (98%)	566 (75%)	149 (20%)	43 (6%)	2	28
1	F	758/772 (98%)	562 (74%)	171 (23%)	25 (3%)	5	42
All	All	4547/4632 (98%)	3343 (74%)	962 (21%)	242 (5%)	2	30

5 of 242 Ramachandran outliers are listed below:

Mol	Chain	Res	Type
1	A	194	ASP
1	A	203	LEU
1	A	264	ALA
1	A	311	GLY
1	B	42	VAL

5.3.2 Protein sidechains ⓘ

In the following table, the Percentiles column shows the percent sidechain outliers of the chain as a percentile score with respect to all X-ray entries followed by that with respect to entries of similar resolution.

The Analysed column shows the number of residues for which the sidechain conformation was analysed, and the total number of residues.

Mol	Chain	Analysed	Rotameric	Outliers	Percentiles	
1	A	632/627 (101%)	575 (91%)	57 (9%)	12	46
1	B	630/627 (100%)	574 (91%)	56 (9%)	12	47
1	C	626/627 (100%)	569 (91%)	57 (9%)	12	46
1	D	632/627 (101%)	584 (92%)	48 (8%)	16	55
1	E	630/627 (100%)	579 (92%)	51 (8%)	15	52
1	F	630/627 (100%)	573 (91%)	57 (9%)	12	46
All	All	3780/3762 (100%)	3454 (91%)	326 (9%)	13	49

5 of 326 residues with a non-rotameric sidechain are listed below:

Mol	Chain	Res	Type
1	C	488	TYR

Continued on next page...

Continued from previous page...

Mol	Chain	Res	Type
1	D	262	SER
1	F	541	TYR
1	C	541	TYR
1	C	738	VAL

Some sidechains can be flipped to improve hydrogen bonding and reduce clashes. 5 of 120 such sidechains are listed below:

Mol	Chain	Res	Type
1	C	575	ASN
1	D	427	ASN
1	F	341	ASN
1	C	718	ASN
1	D	28	HIS

5.3.3 RNA ⓘ

There are no RNA molecules in this entry.

5.4 Non-standard residues in protein, DNA, RNA chains ⓘ

There are no non-standard protein/DNA/RNA residues in this entry.

5.5 Carbohydrates ⓘ

There are no carbohydrates in this entry.

5.6 Ligand geometry ⓘ

Of 18 ligands modelled in this entry, 18 are monoatomic - leaving 0 for Mogul analysis.

There are no bond length outliers.

There are no bond angle outliers.

There are no chirality outliers.

There are no torsion outliers.

There are no ring outliers.

No monomer is involved in short contacts.

5.7 Other polymers [i](#)

There are no such residues in this entry.

5.8 Polymer linkage issues [i](#)

There are no chain breaks in this entry.

6 Fit of model and data ⓘ

6.1 Protein, DNA and RNA chains ⓘ

In the following table, the column labelled ‘#RSRZ> 2’ contains the number (and percentage) of RSRZ outliers, followed by percent RSRZ outliers for the chain as percentile scores relative to all X-ray entries and entries of similar resolution. The OWAB column contains the minimum, median, 95th percentile and maximum values of the occupancy-weighted average B-factor per residue. The column labelled ‘Q< 0.9’ lists the number of (and percentage) of residues with an average occupancy less than 0.9.

Mol	Chain	Analysed	<RSRZ>	#RSRZ>2		OWAB(Å ²)	Q<0.9
1	A	748/772 (96%)	0.01	18 (2%)	62 52	97, 155, 228, 284	0
1	B	744/772 (96%)	0.26	42 (5%)	28 21	115, 179, 293, 361	0
1	C	739/772 (95%)	0.02	13 (1%)	71 62	118, 171, 229, 257	0
1	D	747/772 (96%)	0.17	34 (4%)	36 28	125, 189, 267, 339	0
1	E	744/772 (96%)	0.17	37 (4%)	32 25	110, 183, 285, 327	0
1	F	744/772 (96%)	0.24	34 (4%)	36 28	138, 191, 298, 348	0
All	All	4466/4632 (96%)	0.15	178 (3%)	42 33	97, 179, 272, 361	0

The worst 5 of 178 RSRZ outliers are listed below:

Mol	Chain	Res	Type	RSRZ
1	E	70	ILE	6.5
1	E	51	GLU	6.0
1	D	81	GLN	5.9
1	B	46	VAL	5.5
1	E	198	ILE	5.3

6.2 Non-standard residues in protein, DNA, RNA chains ⓘ

There are no non-standard protein/DNA/RNA residues in this entry.

6.3 Carbohydrates ⓘ

There are no carbohydrates in this entry.

6.4 Ligands [i](#)

In the following table, the Atoms column lists the number of modelled atoms in the group and the number defined in the chemical component dictionary. LLDF column lists the quality of electron density of the group with respect to its neighbouring residues in protein, DNA or RNA chains. The B-factors column lists the minimum, median, 95th percentile and maximum values of B factors of atoms in the group. The column labelled 'Q< 0.9' lists the number of atoms with occupancy less than 0.9.

Mol	Type	Chain	Res	Atoms	RSCC	RSR	LLDF	B-factors(Å ²)	Q<0.9
2	ZN	A	1001	1/1	0.98	0.28	1.02	144,144,144,144	0
2	ZN	F	1001	1/1	0.90	0.27	0.08	187,187,187,187	0
2	ZN	E	1001	1/1	0.98	0.26	-0.00	152,152,152,152	0
2	ZN	E	1003	1/1	0.97	0.21	-0.02	183,183,183,183	0
2	ZN	F	1003	1/1	0.98	0.25	-0.16	179,179,179,179	0
2	ZN	A	1003	1/1	0.94	0.24	-0.31	178,178,178,178	0
2	ZN	D	1001	1/1	0.99	0.24	-0.49	157,157,157,157	0
2	ZN	C	1001	1/1	0.95	0.19	-0.66	143,143,143,143	0
2	ZN	B	1001	1/1	0.98	0.22	-0.75	170,170,170,170	0
2	ZN	C	1003	1/1	0.96	0.23	-0.97	156,156,156,156	0
2	ZN	D	1003	1/1	0.88	0.21	-1.31	202,202,202,202	0
2	ZN	D	1002	1/1	0.94	0.08	-1.57	149,149,149,149	0
2	ZN	A	1002	1/1	0.99	0.12	-1.67	113,113,113,113	0
2	ZN	E	1002	1/1	0.91	0.08	-1.86	175,175,175,175	0
2	ZN	C	1002	1/1	0.95	0.13	-2.99	147,147,147,147	0
2	ZN	B	1002	1/1	0.98	0.03	-3.18	187,187,187,187	0
2	ZN	F	1002	1/1	0.89	0.11	-4.78	213,213,213,213	0
2	ZN	B	1003	1/1	0.80	0.32	-	180,180,180,180	0

6.5 Other polymers [i](#)

There are no such residues in this entry.