



# Full wwPDB X-ray Structure Validation Report ⓘ

Feb 1, 2016 – 04:49 PM GMT

PDB ID : 4GB3  
Title : Human coxsackievirus B3 strain RD coat protein  
Authors : Yoder, J.D.; Hafenstein, S.  
Deposited on : 2012-07-26  
Resolution : 2.74 Å(reported)

This is a Full wwPDB X-ray Structure Validation Report for a publicly released PDB entry.  
We welcome your comments at [validation@mail.wwpdb.org](mailto:validation@mail.wwpdb.org)  
A user guide is available at  
<http://wwpdb.org/validation/2016/XrayValidationReportHelp>  
with specific help available everywhere you see the ⓘ symbol.

---

The following versions of software and data (see [references ⓘ](#)) were used in the production of this report:

MolProbity : 4.02b-467  
Mogul : 1.7 (RC4), CSD as536be (2015)  
Xtriage (Phenix) : 1.9-1692  
EDS : rb-20026688  
Percentile statistics : 20151230.v01 (using entries in the PDB archive December 30th 2015)  
Refmac : 5.8.0135  
CCP4 : 6.5.0  
Ideal geometry (proteins) : Engh & Huber (2001)  
Ideal geometry (DNA, RNA) : Parkinson et al. (1996)  
Validation Pipeline (wwPDB-VP) : trunk26865

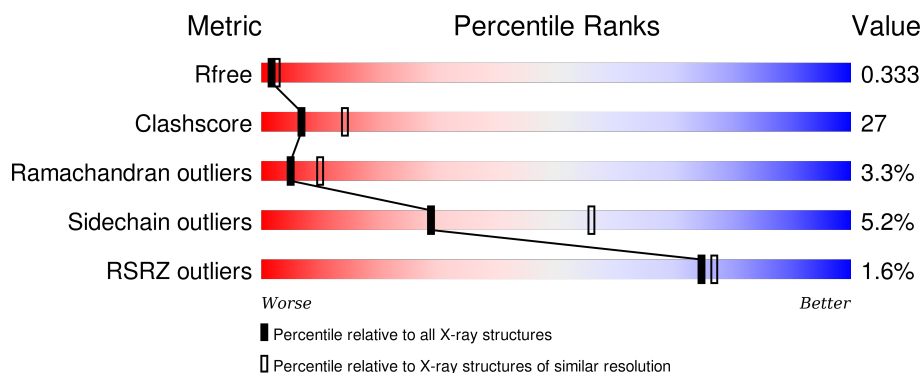
# 1 Overall quality at a glance ⓘ

The following experimental techniques were used to determine the structure:

## *X-RAY DIFFRACTION*

The reported resolution of this entry is 2.74 Å.

Percentile scores (ranging between 0-100) for global validation metrics of the entry are shown in the following graphic. The table shows the number of entries on which the scores are based.



Metric	Whole archive (#Entries)	Similar resolution (#Entries, resolution range(Å))
$R_{free}$	91344	3050 (2.78-2.70)
Clashscore	102246	3424 (2.78-2.70)
Ramachandran outliers	100387	3367 (2.78-2.70)
Sidechain outliers	100360	3368 (2.78-2.70)
RSRZ outliers	91569	3055 (2.78-2.70)

The table below summarises the geometric issues observed across the polymeric chains and their fit to the electron density. The red, orange, yellow and green segments on the lower bar indicate the fraction of residues that contain outliers for  $\geq 3$ , 2, 1 and 0 types of geometric quality criteria. A grey segment represents the fraction of residues that are not modelled. The numeric value for each fraction is indicated below the corresponding segment, with a dot representing fractions  $\leq 5\%$ . The upper red bar (where present) indicates the fraction of residues that have poor fit to the electron density. The numeric value is given above the bar.

Mol	Chain	Length	Quality of chain
1	1	281	<div> <div>2%</div> <div>49%</div> <div>44%</div> <div>• •</div> </div>
2	2	263	<div> <div>2%</div> <div>53%</div> <div>38%</div> <div>5% • •</div> </div>
3	3	238	<div> <div>%</div> <div>66%</div> <div>30%</div> <div>•</div> </div>
4	4	68	<div> <div>%</div> <div>51%</div> <div>24%</div> <div>6%</div> <div>19%</div> </div>

The following table lists non-polymeric compounds, carbohydrate monomers and non-standard

residues in protein, DNA, RNA chains that are outliers for geometric or electron-density-fit criteria:

Mol	Type	Chain	Res	Chirality	Geometry	Clashes	Electron density
5	PLM	1	301	-	-	X	-

## 2 Entry composition

There are 6 unique types of molecules in this entry. The entry contains 6427 atoms, of which 0 are hydrogens and 0 are deuteriums.

In the tables below, the ZeroOcc column contains the number of atoms modelled with zero occupancy, the AltConf column contains the number of residues with at least one atom in alternate conformation and the Trace column contains the number of residues modelled with at most 2 atoms.

- Molecule 1 is a protein called coat protein 1.

Mol	Chain	Residues	Atoms					ZeroOcc	AltConf	Trace
1	1	273	Total	C	N	O	S	0	0	0
			2155	1360	379	408	8			

- Molecule 2 is a protein called coat protein 2.

Mol	Chain	Residues	Atoms					ZeroOcc	AltConf	Trace
2	2	256	Total	C	N	O	S	0	0	0
			1973	1247	334	376	16			

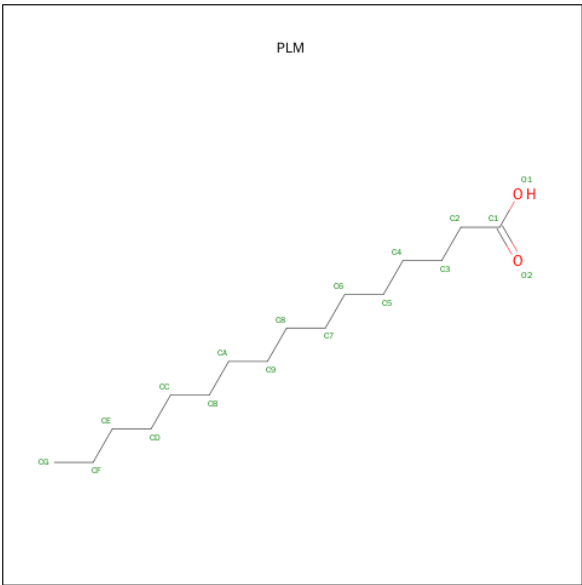
- Molecule 3 is a protein called coat protein 3.

Mol	Chain	Residues	Atoms					ZeroOcc	AltConf	Trace
3	3	238	Total	C	N	O	S	0	0	0
			1838	1175	295	351	17			

- Molecule 4 is a protein called coat protein 4.

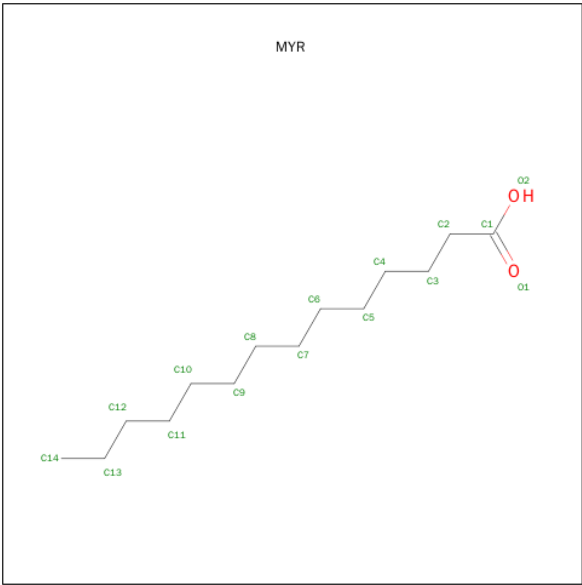
Mol	Chain	Residues	Atoms					ZeroOcc	AltConf	Trace
4	4	55	Total	C	N	O	S	0	0	0
			428	267	74	86	1			

- Molecule 5 is PALMITIC ACID (three-letter code: PLM) (formula: C<sub>16</sub>H<sub>32</sub>O<sub>2</sub>).



Mol	Chain	Residues	Atoms			ZeroOcc	AltConf
5	1	1	Total	C	O	0	0
			18	16	2		

- Molecule 6 is MYRISTIC ACID (three-letter code: MYR) (formula: C<sub>14</sub>H<sub>28</sub>O<sub>2</sub>).

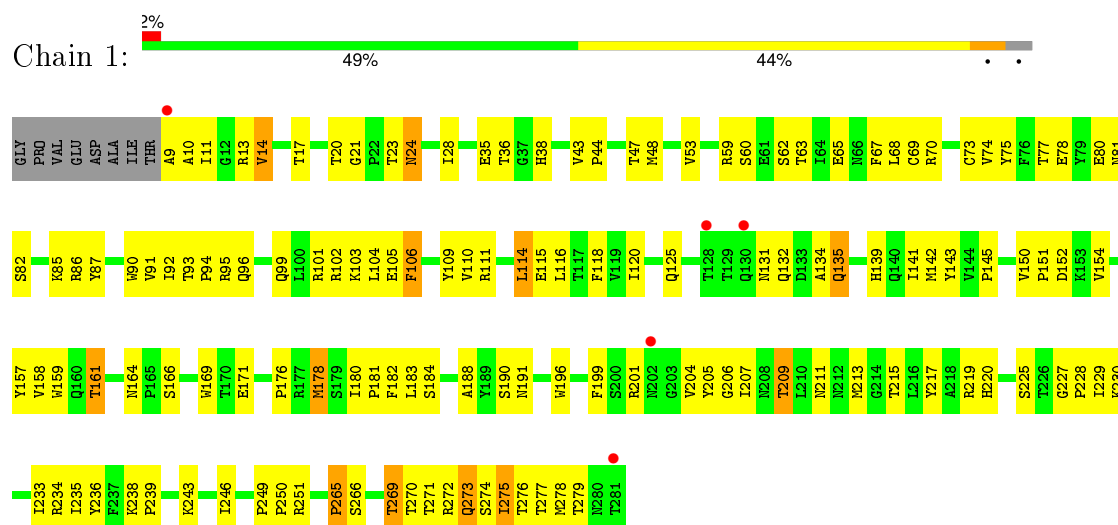


Mol	Chain	Residues	Atoms			ZeroOcc	AltConf
6	4	1	Total	C	O	0	0
			15	14	1		

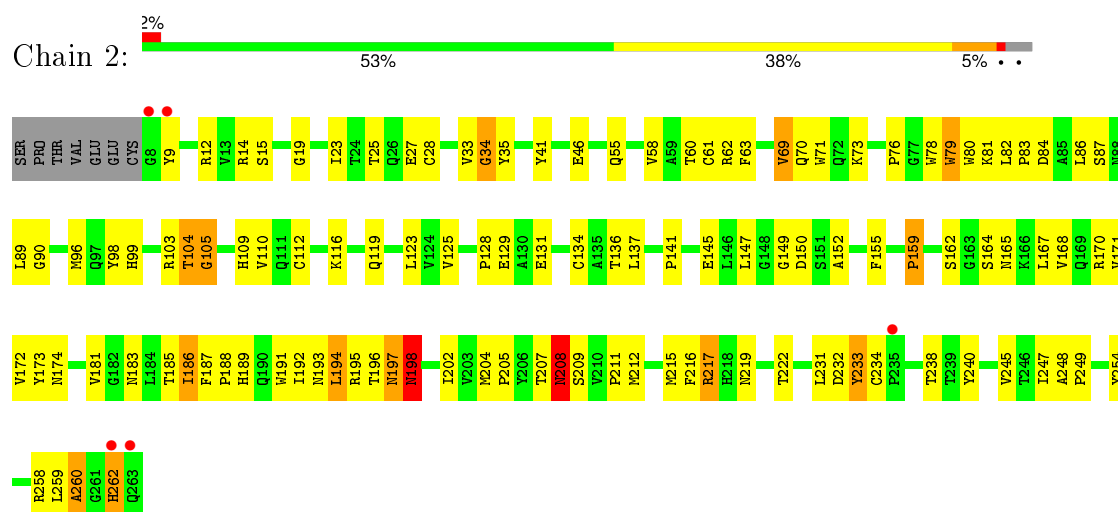
### 3 Residue-property plots

These plots are drawn for all protein, RNA and DNA chains in the entry. The first graphic for a chain summarises the proportions of errors displayed in the second graphic. The second graphic shows the sequence view annotated by issues in geometry and electron density. Residues are color-coded according to the number of geometric quality criteria for which they contain at least one outlier: green = 0, yellow = 1, orange = 2 and red = 3 or more. A red dot above a residue indicates a poor fit to the electron density ( $RSRZ > 2$ ). Stretches of 2 or more consecutive residues without any outlier are shown as a green connector. Residues present in the sample, but not in the model, are shown in grey.

#### • Molecule 1: coat protein 1

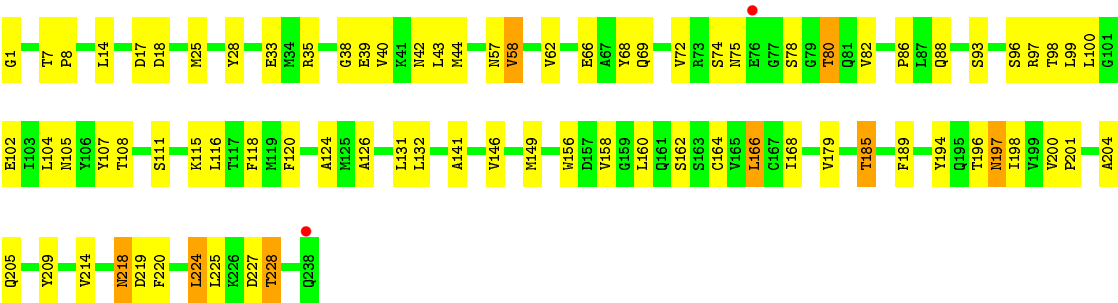


#### • Molecule 2: coat protein 2

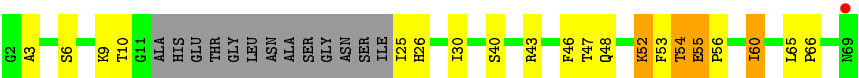


#### • Molecule 3: coat protein 3





● Molecule 4: coat protein 4



## 4 Data and refinement statistics

Property	Value	Source
Space group	H 3 2	Depositor
Cell constants a, b, c, $\alpha$ , $\beta$ , $\gamma$	296.64Å 296.64Å 813.22Å 90.00° 90.00° 120.00°	Depositor
Resolution (Å)	15.00 – 2.74 15.00 – 2.74	Depositor EDS
% Data completeness (in resolution range)	93.2 (15.00-2.74) 93.3 (15.00-2.74)	Depositor EDS
$R_{merge}$	0.13	Depositor
$R_{sym}$	(Not available)	Depositor
$\langle I/\sigma(I) \rangle$ <sup>1</sup>	2.46 (at 2.73Å)	Xtriage
Refinement program	CNS 1.3	Depositor
R, $R_{free}$	0.330 , 0.339 0.324 , 0.333	Depositor DCC
$R_{free}$ test set	17173 reflections (5.45%)	DCC
Wilson B-factor (Å <sup>2</sup> )	41.3	Xtriage
Anisotropy	0.522	Xtriage
Bulk solvent $k_{sol}$ (e/Å <sup>3</sup> ), $B_{sol}$ (Å <sup>2</sup> )	0.33 , 40.5	EDS
Estimated twinning fraction	No twinning to report.	Xtriage
L-test for twinning <sup>2</sup>	$\langle  L  \rangle = 0.49$ , $\langle L^2 \rangle = 0.32$	Xtriage
Outliers	3 of 343901 reflections (0.001%)	Xtriage
$F_o, F_c$ correlation	0.77	EDS
Total number of atoms	6427	wwPDB-VP
Average B, all atoms (Å <sup>2</sup> )	44.0	wwPDB-VP

Xtriage's analysis on translational NCS is as follows: *The largest off-origin peak in the Patterson function is 1.42% of the height of the origin peak. No significant pseudotranslation is detected.*

<sup>1</sup>Intensities estimated from amplitudes.

<sup>2</sup>Theoretical values of  $\langle |L| \rangle$ ,  $\langle L^2 \rangle$  for acentric reflections are 0.5, 0.375 respectively for untwinned datasets, and 0.333, 0.2 for perfectly twinned datasets.



## 5 Model quality

### 5.1 Standard geometry

Bond lengths and bond angles in the following residue types are not validated in this section: PLM, MYR

The Z score for a bond length (or angle) is the number of standard deviations the observed value is removed from the expected value. A bond length (or angle) with  $|Z| > 5$  is considered an outlier worth inspection. RMSZ is the root-mean-square of all Z scores of the bond lengths (or angles).

Mol	Chain	Bond lengths		Bond angles	
		RMSZ	$\# Z  > 5$	RMSZ	$\# Z  > 5$
1	1	0.44	0/2214	0.68	0/3022
2	2	0.43	0/2025	0.74	1/2770 (0.0%)
3	3	0.45	1/1889 (0.1%)	0.69	0/2575
4	4	0.43	0/435	0.70	0/587
All	All	0.44	1/6563 (0.0%)	0.70	1/8954 (0.0%)

All (1) bond length outliers are listed below:

Mol	Chain	Res	Type	Atoms	Z	Observed(Å)	Ideal(Å)
3	3	1	GLY	N-CA	5.35	1.54	1.46

All (1) bond angle outliers are listed below:

Mol	Chain	Res	Type	Atoms	Z	Observed(°)	Ideal(°)
2	2	105	GLY	N-CA-C	-5.60	99.11	113.10

There are no chirality outliers.

There are no planarity outliers.

### 5.2 Too-close contacts

In the following table, the Non-H and H(model) columns list the number of non-hydrogen atoms and hydrogen atoms in the chain respectively. The H(added) column lists the number of hydrogen atoms added and optimized by MolProbity. The Clashes column lists the number of clashes within the asymmetric unit, whereas Symm-Clashes lists symmetry related clashes.

Mol	Chain	Non-H	H(model)	H(added)	Clashes	Symm-Clashes
1	1	2155	0	2093	161	0
2	2	1973	0	1904	105	0

*Continued on next page...*

*Continued from previous page...*

Mol	Chain	Non-H	H(model)	H(added)	Clashes	Symm-Clashes
3	3	1838	0	1770	102	0
4	4	428	0	415	28	0
5	1	18	0	31	12	0
6	4	15	0	27	2	0
All	All	6427	0	6240	341	0

The all-atom clashscore is defined as the number of clashes found per 1000 atoms (including hydrogen atoms). The all-atom clashscore for this structure is 27.

All (341) close contacts within the same asymmetric unit are listed below, sorted by their clash magnitude.

Atom-1	Atom-2	Interatomic distance (Å)	Clash overlap (Å)
4:4:60:ILE:H	4:4:60:ILE:HD12	1.12	1.07
1:1:132:GLN:NE2	1:1:227:GLY:HA3	1.72	1.04
1:1:132:GLN:HE21	1:1:227:GLY:HA3	1.25	1.01
2:2:186:ILE:HG12	3:3:99:LEU:HD21	1.38	1.01
2:2:82:LEU:HD21	2:2:247:ILE:HD13	1.49	0.95
2:2:83:PRO:HG2	2:2:219:ASN:HA	1.46	0.94
2:2:155:PHE:HB3	2:2:172:VAL:HG22	1.51	0.93
1:1:9:ALA:HB3	1:1:13:ARG:HD2	1.52	0.92
1:1:178:MET:HE3	5:1:301:PLM:HG3	1.52	0.91
2:2:145:GLU:HG3	2:2:168:VAL:HG23	1.57	0.87
4:4:60:ILE:H	4:4:60:ILE:CD1	1.83	0.86
1:1:93:THR:HG22	1:1:95:ARG:H	1.40	0.85
2:2:46:GLU:OE1	3:3:35:ARG:HG3	1.77	0.84
3:3:107:TYR:O	3:3:179:VAL:HG11	1.78	0.83
3:3:42:ASN:HD22	3:3:44:MET:H	1.25	0.83
1:1:206:GLY:O	1:1:209:THR:HG23	1.79	0.83
3:3:18:ASP:OD2	4:4:43:ARG:HD2	1.78	0.82
1:1:86:ARG:HH11	1:1:86:ARG:HG2	1.46	0.80
1:1:77:THR:HG22	1:1:78:GLU:H	1.49	0.77
1:1:59:ARG:HD2	4:4:48:GLN:HE22	1.46	0.77
1:1:82:SER:HA	1:1:86:ARG:HH11	1.49	0.76
3:3:98:THR:HG22	3:3:99:LEU:N	2.01	0.76
4:4:3:ALA:HB2	4:4:30:ILE:HG12	1.67	0.76
2:2:195:ARG:HH11	2:2:195:ARG:HG3	1.52	0.75
2:2:86:LEU:HA	2:2:89:LEU:HD23	1.69	0.74
1:1:269:THR:HG21	3:3:93:SER:O	1.88	0.74
3:3:42:ASN:ND2	3:3:44:MET:H	1.85	0.74
2:2:136:THR:HG21	2:2:165:ASN:H	1.53	0.74
3:3:75:ASN:H	3:3:197:ASN:ND2	1.86	0.72

*Continued on next page...*

*Continued from previous page...*

Atom-1	Atom-2	Interatomic distance (Å)	Clash overlap (Å)
4:4:60:ILE:N	4:4:60:ILE:HD12	1.97	0.72
3:3:38:GLY:HA2	4:4:52:LYS:HD2	1.71	0.72
2:2:35:TYR:O	4:4:52:LYS:HG2	1.89	0.71
2:2:25:THR:HG22	2:2:27:GLU:H	1.53	0.71
1:1:274:SER:HA	3:3:58:VAL:HG22	1.72	0.71
2:2:25:THR:HG21	2:2:28:CYS:HB3	1.71	0.71
3:3:107:TYR:CE2	3:3:225:LEU:HD13	2.26	0.70
1:1:266:SER:H	2:2:174:ASN:HD21	1.38	0.70
1:1:93:THR:CG2	1:1:95:ARG:H	2.04	0.70
2:2:207:THR:O	2:2:208:ASN:HB2	1.92	0.69
2:2:259:LEU:H	2:2:259:LEU:HD23	1.55	0.69
1:1:199:PHE:CD2	2:2:217:ARG:HD3	2.27	0.68
1:1:272:ARG:HE	3:3:57:ASN:HD22	1.41	0.68
2:2:123:LEU:HB2	2:2:191:TRP:CZ3	2.28	0.68
1:1:178:MET:CE	5:1:301:PLM:HG3	2.23	0.68
1:1:178:MET:HE1	5:1:301:PLM:HF1	1.75	0.68
1:1:95:ARG:NH2	5:1:301:PLM:O1	2.20	0.67
1:1:178:MET:HE3	5:1:301:PLM:CG	2.24	0.67
2:2:110:VAL:HG22	2:2:245:VAL:HG22	1.77	0.67
2:2:119:GLN:NE2	3:3:205:GLN:HB3	2.09	0.67
1:1:11:ILE:HG22	4:4:46:PHE:HB2	1.77	0.66
2:2:208:ASN:ND2	2:2:209:SER:H	1.93	0.66
3:3:42:ASN:HD21	3:3:44:MET:HG2	1.61	0.66
1:1:243:LYS:HE2	3:3:33:GLU:OE1	1.96	0.66
3:3:98:THR:HG22	3:3:99:LEU:H	1.59	0.66
3:3:75:ASN:H	3:3:197:ASN:HD21	1.42	0.66
2:2:208:ASN:HD22	2:2:209:SER:H	1.41	0.66
1:1:103:LYS:O	1:1:106:PHE:HB2	1.96	0.66
1:1:272:ARG:HG2	3:3:57:ASN:HB2	1.78	0.66
1:1:92:ILE:HD13	5:1:301:PLM:HA1	1.77	0.66
2:2:104:THR:HG22	2:2:105:GLY:H	1.61	0.65
2:2:34:GLY:HA3	2:2:205:PRO:HD3	1.77	0.65
3:3:86:PRO:HG3	3:3:88:GLN:HE21	1.62	0.65
1:1:161:THR:HG21	1:1:166:SER:OG	1.96	0.65
2:2:155:PHE:CB	2:2:172:VAL:HG22	2.25	0.65
1:1:142:MET:SD	1:1:161:THR:HG23	2.36	0.65
2:2:103:ARG:HB2	2:2:212:MET:HG2	1.78	0.65
2:2:195:ARG:HG3	2:2:195:ARG:NH1	2.12	0.65
3:3:185:THR:HG23	3:3:185:THR:O	1.97	0.65
1:1:169:TRP:CH2	1:1:171:GLU:HA	2.32	0.65
4:4:54:THR:O	4:4:55:GLU:HB2	1.96	0.64

*Continued on next page...*

*Continued from previous page...*

Atom-1	Atom-2	Interatomic distance (Å)	Clash overlap (Å)
3:3:74:SER:HA	3:3:197:ASN:HD21	1.62	0.64
1:1:278:MET:HE2	3:3:189:PHE:CD1	2.32	0.64
1:1:82:SER:HA	1:1:86:ARG:NH1	2.12	0.64
1:1:59:ARG:HD2	4:4:48:GLN:NE2	2.12	0.64
1:1:178:MET:CE	5:1:301:PLM:CG	2.76	0.64
2:2:145:GLU:CG	2:2:168:VAL:HG23	2.27	0.63
2:2:123:LEU:HG	2:2:125:VAL:HG23	1.78	0.63
2:2:258:ARG:HG3	2:2:258:ARG:HH11	1.64	0.63
1:1:62:SER:HB2	3:3:42:ASN:ND2	2.13	0.63
2:2:63:PHE:CD1	2:2:248:ALA:HB2	2.34	0.63
2:2:104:THR:HG22	2:2:105:GLY:O	1.99	0.62
2:2:71:TRP:CZ3	2:2:194:LEU:HD11	2.34	0.62
2:2:69:VAL:HG11	2:2:78:TRP:CE2	2.35	0.62
3:3:98:THR:HG21	3:3:214:VAL:CG1	2.30	0.61
1:1:62:SER:HB2	3:3:42:ASN:HD21	1.64	0.61
1:1:118:PHE:HB2	1:1:176:PRO:HG2	1.81	0.61
1:1:93:THR:HG22	1:1:95:ARG:N	2.14	0.61
2:2:192:ILE:HA	2:2:197:ASN:OD1	2.01	0.60
2:2:262:HIS:N	2:2:262:HIS:ND1	2.49	0.60
1:1:114:LEU:CD2	1:1:238:LYS:H	2.14	0.60
3:3:201:PRO:HD2	3:3:204:ALA:HB3	1.84	0.60
1:1:278:MET:HE2	3:3:189:PHE:HD1	1.67	0.60
3:3:141:ALA:HA	3:3:189:PHE:CD2	2.37	0.59
1:1:87:TYR:HB3	1:1:154:VAL:HG12	1.83	0.59
3:3:118:PHE:CE2	3:3:132:LEU:HD22	2.36	0.59
1:1:201:ARG:HG3	1:1:201:ARG:HH11	1.67	0.59
2:2:60:THR:HG23	2:2:61:CYS:SG	2.42	0.59
2:2:83:PRO:CG	2:2:219:ASN:HA	2.28	0.59
3:3:160:LEU:O	3:3:160:LEU:HD12	2.03	0.58
1:1:38:HIS:CD2	4:4:55:GLU:HG2	2.38	0.58
2:2:14:ARG:HH11	2:2:14:ARG:HB2	1.68	0.58
1:1:81:ASN:HB2	1:1:229:ILE:H	1.69	0.58
1:1:161:THR:HG22	1:1:164:ASN:HB2	1.84	0.58
1:1:272:ARG:NE	3:3:57:ASN:HD22	2.01	0.57
1:1:93:THR:HG23	1:1:94:PRO:HD2	1.87	0.57
2:2:62:ARG:HG3	2:2:62:ARG:HH11	1.69	0.57
4:4:53:PHE:O	4:4:56:PRO:HD3	2.04	0.57
1:1:35:GLU:HA	2:2:191:TRP:HB2	1.86	0.57
2:2:155:PHE:HB3	2:2:172:VAL:CG2	2.30	0.57
3:3:35:ARG:HH11	3:3:35:ARG:HG2	1.67	0.57
1:1:86:ARG:HG2	1:1:86:ARG:NH1	2.13	0.57

*Continued on next page...*

*Continued from previous page...*

Atom-1	Atom-2	Interatomic distance (Å)	Clash overlap (Å)
1:1:62:SER:HB2	3:3:42:ASN:OD1	2.05	0.56
1:1:23:THR:HG22	1:1:24:ASN:N	2.20	0.56
2:2:76:PRO:HB3	2:2:172:VAL:HG21	1.88	0.56
1:1:77:THR:CG2	1:1:85:LYS:NZ	2.68	0.56
2:2:25:THR:CG2	2:2:27:GLU:H	2.18	0.56
1:1:180:ILE:HG23	3:3:25:MET:HE1	1.86	0.56
1:1:157:TYR:CE1	1:1:158:VAL:HG23	2.41	0.56
3:3:218:ASN:HD22	3:3:219:ASP:N	2.03	0.56
3:3:86:PRO:CG	3:3:88:GLN:HE21	2.18	0.55
1:1:77:THR:HG22	1:1:85:LYS:HZ3	1.70	0.55
3:3:75:ASN:N	3:3:197:ASN:HD21	2.03	0.55
1:1:182:PHE:CZ	1:1:184:SER:HB3	2.40	0.55
2:2:70:GLN:NE2	2:2:240:TYR:HD1	2.04	0.55
2:2:159:PRO:HA	2:2:171:VAL:HG22	1.87	0.55
1:1:68:LEU:O	1:1:239:PRO:HD2	2.07	0.55
1:1:201:ARG:NH1	1:1:201:ARG:HG3	2.22	0.54
1:1:183:LEU:HD21	3:3:25:MET:HE2	1.90	0.54
2:2:70:GLN:NE2	2:2:240:TYR:CD1	2.75	0.54
1:1:204:VAL:HG12	1:1:205:TYR:N	2.22	0.54
2:2:76:PRO:CB	2:2:172:VAL:HG21	2.37	0.54
1:1:125:GLN:HB2	1:1:228:PRO:HG2	1.87	0.54
2:2:104:THR:HG22	2:2:105:GLY:N	2.22	0.54
1:1:77:THR:HG21	1:1:85:LYS:HZ1	1.72	0.54
1:1:77:THR:HG22	1:1:85:LYS:NZ	2.22	0.54
1:1:233:ILE:HG23	1:1:233:ILE:O	2.08	0.54
1:1:134:ALA:HA	1:1:225:SER:HB3	1.88	0.54
1:1:234:ARG:HG2	1:1:234:ARG:HH11	1.73	0.54
3:3:42:ASN:ND2	3:3:44:MET:HG2	2.23	0.54
3:3:42:ASN:HD22	3:3:44:MET:N	2.01	0.53
1:1:273:GLN:HB2	1:1:277:THR:OG1	2.08	0.53
3:3:80:THR:HB	3:3:194:TYR:CD1	2.44	0.53
2:2:104:THR:HG21	2:2:249:PRO:HB3	1.90	0.53
1:1:159:TRP:CD2	1:1:219:ARG:HD3	2.44	0.53
1:1:36:THR:OG1	1:1:38:HIS:HB3	2.09	0.53
2:2:186:ILE:HG12	3:3:99:LEU:CD2	2.25	0.52
1:1:86:ARG:HB3	1:1:154:VAL:HG11	1.90	0.52
1:1:102:ARG:HG3	1:1:251:ARG:HB3	1.91	0.52
2:2:33:VAL:O	2:2:34:GLY:O	2.26	0.52
3:3:44:MET:HE1	3:3:220:PHE:CD1	2.45	0.52
1:1:274:SER:C	1:1:276:THR:H	2.13	0.52
3:3:131:LEU:O	3:3:131:LEU:HD23	2.09	0.52

*Continued on next page...*

*Continued from previous page...*

Atom-1	Atom-2	Interatomic distance (Å)	Clash overlap (Å)
2:2:196:THR:HG21	3:3:162:SER:HB3	1.92	0.52
1:1:213:MET:HG3	5:1:301:PLM:H72	1.91	0.52
2:2:197:ASN:ND2	2:2:198:ASN:H	2.08	0.51
1:1:116:LEU:HD11	5:1:301:PLM:HC2	1.93	0.51
1:1:115:GLU:HB3	1:1:238:LYS:HB3	1.92	0.51
1:1:271:THR:HA	3:3:57:ASN:HB3	1.92	0.51
1:1:20:THR:CG2	1:1:21:GLY:N	2.73	0.51
2:2:41:TYR:CE1	2:2:55:GLN:HG2	2.46	0.51
1:1:246:ILE:HG23	2:2:35:TYR:OH	2.11	0.51
2:2:98:TYR:CZ	2:2:260:ALA:HB2	2.45	0.51
1:1:206:GLY:O	1:1:209:THR:CG2	2.55	0.51
2:2:136:THR:HG23	2:2:165:ASN:OD1	2.11	0.51
2:2:23:ILE:HG21	2:2:109:HIS:ND1	2.26	0.51
1:1:81:ASN:CB	1:1:229:ILE:H	2.24	0.51
2:2:70:GLN:HB2	2:2:240:TYR:CE1	2.46	0.51
2:2:69:VAL:HG11	2:2:78:TRP:NE1	2.26	0.51
2:2:25:THR:HG22	2:2:27:GLU:N	2.25	0.51
1:1:90:TRP:HE1	1:1:96:GLN:HE21	1.59	0.51
1:1:118:PHE:CE1	1:1:235:ILE:HG13	2.46	0.50
2:2:19:GLY:HA2	2:2:58:VAL:HG22	1.92	0.50
1:1:80:GLU:HG3	1:1:230:LYS:HG3	1.93	0.50
1:1:69:CYS:O	1:1:70:ARG:HG2	2.11	0.50
1:1:143:TYR:CE2	1:1:145:PRO:HG3	2.47	0.50
1:1:17:THR:HB	1:1:53:VAL:HB	1.92	0.50
3:3:218:ASN:HD22	3:3:218:ASN:C	2.15	0.50
1:1:95:ARG:HA	1:1:101:ARG:HD2	1.92	0.50
4:4:25:ILE:CG2	4:4:26:HIS:N	2.74	0.50
1:1:62:SER:HB2	3:3:42:ASN:CG	2.32	0.50
3:3:72:VAL:HG11	3:3:198:ILE:HD11	1.94	0.50
1:1:118:PHE:CD2	1:1:141:ILE:CD1	2.95	0.50
3:3:105:ASN:HB3	3:3:228:THR:HG22	1.94	0.50
1:1:180:ILE:HG23	3:3:25:MET:CE	2.42	0.49
1:1:43:VAL:HB	1:1:44:PRO:HD2	1.93	0.49
3:3:146:VAL:O	3:3:146:VAL:HG12	2.12	0.49
1:1:178:MET:HE1	5:1:301:PLM:CF	2.40	0.49
1:1:207:ILE:HG12	2:2:131:GLU:OE1	2.12	0.49
1:1:249:PRO:HG3	2:2:183:ASN:O	2.12	0.49
3:3:132:LEU:HB3	3:3:166:LEU:HD13	1.95	0.49
1:1:90:TRP:HE1	1:1:96:GLN:NE2	2.11	0.49
2:2:188:PRO:HG3	2:2:204:MET:SD	2.52	0.49
1:1:134:ALA:CA	1:1:225:SER:HB3	2.43	0.48

*Continued on next page...*

*Continued from previous page...*

Atom-1	Atom-2	Interatomic distance (Å)	Clash overlap (Å)
2:2:116:LYS:HA	3:3:124:ALA:HB3	1.94	0.48
1:1:151:PRO:HD2	1:1:217:TYR:CE2	2.47	0.48
2:2:96:MET:HE2	2:2:215:MET:HB2	1.95	0.48
1:1:196:TRP:CZ3	1:1:201:ARG:HD3	2.48	0.48
3:3:100:LEU:O	3:3:104:LEU:HD13	2.13	0.48
2:2:208:ASN:HD22	2:2:209:SER:N	2.10	0.48
1:1:235:ILE:HD12	1:1:235:ILE:N	2.28	0.48
2:2:12:ARG:NH1	3:3:160:LEU:HD11	2.29	0.48
1:1:120:ILE:HD11	1:1:141:ILE:HD11	1.93	0.48
1:1:159:TRP:CG	1:1:219:ARG:NH1	2.82	0.48
1:1:74:VAL:O	1:1:75:TYR:HB2	2.14	0.48
1:1:182:PHE:CZ	1:1:188:ALA:HA	2.49	0.48
1:1:141:ILE:O	1:1:166:SER:HB2	2.14	0.48
1:1:101:ARG:O	1:1:105:GLU:HG3	2.15	0.47
1:1:178:MET:HE1	5:1:301:PLM:CG	2.44	0.47
1:1:150:VAL:HG13	1:1:217:TYR:CZ	2.49	0.47
1:1:114:LEU:HD23	1:1:238:LYS:H	1.77	0.47
1:1:9:ALA:O	1:1:11:ILE:N	2.42	0.47
3:3:111:SER:O	3:3:220:PHE:HA	2.14	0.47
1:1:114:LEU:HD21	1:1:238:LYS:H	1.78	0.47
2:2:14:ARG:NH1	2:2:14:ARG:HB2	2.28	0.47
1:1:215:THR:HB	1:1:217:TYR:HE1	1.79	0.47
3:3:196:THR:HG22	3:3:196:THR:O	2.13	0.47
1:1:44:PRO:O	1:1:48:MET:HG2	2.14	0.47
3:3:99:LEU:HD12	3:3:99:LEU:HA	1.76	0.47
4:4:3:ALA:N	6:4:101:MYR:O1	2.47	0.47
1:1:102:ARG:NH1	1:1:251:ARG:O	2.45	0.47
1:1:28:ILE:O	1:1:28:ILE:HG13	2.15	0.47
1:1:13:ARG:CG	1:1:14:VAL:N	2.78	0.47
3:3:108:THR:HB	3:3:224:LEU:HB3	1.96	0.47
1:1:118:PHE:CD2	1:1:141:ILE:HD12	2.49	0.47
3:3:25:MET:HB3	3:3:28:TYR:HB2	1.96	0.47
1:1:73:CYS:HB2	1:1:236:TYR:CE2	2.49	0.47
1:1:265:PRO:HA	2:2:174:ASN:ND2	2.30	0.47
2:2:123:LEU:HD13	2:2:191:TRP:CZ2	2.50	0.46
2:2:23:ILE:HD12	2:2:63:PHE:CZ	2.50	0.46
4:4:47:THR:HG22	4:4:48:GLN:N	2.31	0.46
2:2:216:PHE:CE2	2:2:262:HIS:HB3	2.50	0.46
2:2:231:LEU:HD12	2:2:232:ASP:H	1.81	0.46
4:4:54:THR:O	4:4:55:GLU:CB	2.60	0.46
1:1:62:SER:CB	3:3:42:ASN:HD21	2.29	0.46

*Continued on next page...*

*Continued from previous page...*

Atom-1	Atom-2	Interatomic distance (Å)	Clash overlap (Å)
2:2:27:GLU:HB3	2:2:198:ASN:HB3	1.98	0.46
3:3:126:ALA:HA	3:3:200:VAL:HG12	1.97	0.46
2:2:145:GLU:HG2	2:2:167:LEU:HA	1.97	0.46
4:4:65:LEU:HB3	4:4:66:PRO:HD2	1.98	0.46
1:1:272:ARG:NH2	1:1:275:ILE:HA	2.31	0.46
2:2:78:TRP:HB3	2:2:152:ALA:HB1	1.97	0.46
1:1:277:THR:HG22	1:1:279:THR:H	1.80	0.46
1:1:250:PRO:HG2	3:3:102:GLU:HG3	1.98	0.46
3:3:98:THR:CG2	3:3:99:LEU:N	2.71	0.46
4:4:3:ALA:CB	4:4:30:ILE:HG12	2.41	0.46
1:1:81:ASN:HD22	1:1:229:ILE:HG13	1.81	0.45
1:1:269:THR:HG23	3:3:97:ARG:CG	2.46	0.45
2:2:208:ASN:ND2	2:2:209:SER:N	2.64	0.45
3:3:115:LYS:HE3	3:3:115:LYS:HB2	1.82	0.45
4:4:9:LYS:O	4:4:10:THR:HG23	2.16	0.45
2:2:14:ARG:CG	2:2:15:SER:N	2.79	0.45
2:2:198:ASN:C	2:2:198:ASN:OD1	2.55	0.45
1:1:65:GLU:O	1:1:69:CYS:HB2	2.16	0.45
1:1:183:LEU:HD11	3:3:25:MET:HE3	1.99	0.45
3:3:82:VAL:HG22	3:3:194:TYR:CE1	2.52	0.45
4:4:6:SER:O	4:4:26:HIS:HB3	2.15	0.45
1:1:87:TYR:C	1:1:87:TYR:CD1	2.90	0.45
3:3:35:ARG:HG2	3:3:35:ARG:NH1	2.31	0.45
1:1:118:PHE:HE1	1:1:235:ILE:HG13	1.81	0.45
2:2:103:ARG:HD2	2:2:211:PRO:O	2.17	0.45
1:1:23:THR:HG22	1:1:24:ASN:H	1.81	0.45
1:1:14:VAL:HG22	3:3:218:ASN:O	2.17	0.45
3:3:116:LEU:HD12	3:3:168:ILE:HD11	1.99	0.45
3:3:98:THR:CG2	3:3:99:LEU:H	2.27	0.44
1:1:169:TRP:CD1	1:1:176:PRO:HD3	2.52	0.44
2:2:82:LEU:O	2:2:83:PRO:C	2.55	0.44
1:1:28:ILE:HD11	4:4:66:PRO:HB3	2.00	0.44
1:1:77:THR:HG22	1:1:78:GLU:N	2.23	0.44
1:1:111:ARG:HG3	1:1:182:PHE:CE1	2.53	0.44
3:3:14:LEU:HB3	3:3:17:ASP:HB3	1.99	0.44
2:2:123:LEU:HG	2:2:125:VAL:CG2	2.46	0.44
1:1:219:ARG:HG3	1:1:220:HIS:O	2.18	0.44
1:1:95:ARG:HH12	1:1:211:ASN:HD22	1.64	0.44
1:1:275:ILE:HD12	3:3:82:VAL:O	2.18	0.44
1:1:234:ARG:HG2	1:1:234:ARG:NH1	2.33	0.44
3:3:116:LEU:CD1	3:3:168:ILE:HD11	2.47	0.44

*Continued on next page...*



*Continued from previous page...*

Atom-1	Atom-2	Interatomic distance (Å)	Clash overlap (Å)
2:2:99:HIS:CG	2:2:254:TYR:HB3	2.53	0.44
3:3:69:GLN:HB3	3:3:209:TYR:CD1	2.52	0.44
2:2:188:PRO:CG	2:2:204:MET:SD	3.06	0.43
1:1:67:PHE:CG	3:3:43:LEU:HD11	2.53	0.43
2:2:233:TYR:N	2:2:233:TYR:CD2	2.85	0.43
3:3:18:ASP:OD1	4:4:40:SER:HB2	2.18	0.43
1:1:271:THR:HG22	3:3:62:VAL:HG21	2.01	0.43
1:1:201:ARG:CG	1:1:201:ARG:HH11	2.32	0.43
3:3:72:VAL:CG1	3:3:198:ILE:HD11	2.48	0.43
1:1:60:SER:O	1:1:63:THR:HG23	2.18	0.43
1:1:114:LEU:HD23	1:1:115:GLU:N	2.33	0.43
1:1:139:HIS:N	1:1:139:HIS:CD2	2.87	0.43
4:4:30:ILE:CD1	6:4:101:MYR:H72	2.48	0.43
3:3:185:THR:CG2	3:3:185:THR:O	2.65	0.43
2:2:185:THR:C	2:2:187:PHE:H	2.20	0.43
1:1:104:LEU:O	1:1:191:ASN:ND2	2.52	0.43
2:2:193:ASN:O	2:2:195:ARG:N	2.52	0.43
1:1:35:GLU:OE1	1:1:35:GLU:N	2.40	0.43
1:1:272:ARG:HE	3:3:57:ASN:ND2	2.13	0.43
3:3:7:THR:HB	3:3:8:PRO:HD2	2.00	0.43
1:1:116:LEU:CD1	5:1:301:PLM:HC2	2.49	0.43
1:1:246:ILE:HG21	2:2:128:PRO:HG3	2.01	0.43
2:2:233:TYR:HB2	2:2:234:CYS:H	1.63	0.43
2:2:23:ILE:HG21	2:2:109:HIS:CE1	2.54	0.42
4:4:25:ILE:HG22	4:4:26:HIS:N	2.34	0.42
2:2:79:TRP:C	2:2:79:TRP:CD1	2.92	0.42
3:3:57:ASN:O	3:3:58:VAL:C	2.58	0.42
1:1:13:ARG:HG3	1:1:14:VAL:H	1.83	0.42
1:1:77:THR:CG2	1:1:85:LYS:HZ1	2.29	0.42
2:2:81:LYS:HD3	2:2:222:THR:HG23	2.01	0.42
1:1:180:ILE:HA	1:1:181:PRO:HD3	1.87	0.42
1:1:135:GLN:CA	1:1:135:GLN:NE2	2.82	0.42
4:4:52:LYS:NZ	4:4:52:LYS:HB2	2.35	0.42
1:1:43:VAL:O	1:1:44:PRO:C	2.57	0.42
1:1:91:VAL:HG23	1:1:91:VAL:O	2.19	0.42
4:4:3:ALA:HB2	4:4:30:ILE:CG1	2.44	0.42
2:2:134:CYS:HB2	2:2:141:PRO:HD3	2.01	0.42
3:3:108:THR:HA	3:3:179:VAL:CG1	2.50	0.42
3:3:131:LEU:C	3:3:131:LEU:HD23	2.39	0.42
3:3:120:PHE:CD2	3:3:158:VAL:HG11	2.55	0.42
2:2:259:LEU:N	2:2:259:LEU:HD23	2.30	0.42

*Continued on next page...*

Continued from previous page...

Atom-1	Atom-2	Interatomic distance (Å)	Clash overlap (Å)
2:2:98:TYR:CE1	2:2:260:ALA:HB2	2.55	0.42
3:3:156:TRP:C	3:3:156:TRP:CD1	2.92	0.42
3:3:196:THR:O	3:3:197:ASN:O	2.37	0.41
1:1:135:GLN:CA	1:1:135:GLN:HE21	2.32	0.41
1:1:109:TYR:CD1	2:2:209:SER:HB3	2.55	0.41
1:1:199:PHE:CE2	2:2:217:ARG:HD3	2.55	0.41
1:1:276:THR:CG2	1:1:276:THR:O	2.68	0.41
2:2:195:ARG:NH2	3:3:158:VAL:HG12	2.35	0.41
3:3:57:ASN:O	3:3:62:VAL:HG23	2.21	0.41
4:4:60:ILE:CD1	4:4:60:ILE:N	2.64	0.41
2:2:119:GLN:HE22	3:3:205:GLN:HB3	1.84	0.41
3:3:132:LEU:CB	3:3:166:LEU:HD13	2.51	0.41
2:2:181:VAL:CG1	3:3:68:TYR:HE2	2.33	0.41
2:2:171:VAL:HG12	2:2:173:TYR:CE1	2.56	0.41
2:2:84:ASP:OD1	2:2:147:LEU:HD13	2.21	0.41
3:3:104:LEU:O	3:3:179:VAL:HG21	2.21	0.40
3:3:156:TRP:HB2	3:3:164:CYS:SG	2.62	0.40
2:2:189:HIS:HA	2:2:202:ILE:HD11	2.03	0.40
1:1:110:VAL:HG12	1:1:111:ARG:N	2.36	0.40
3:3:39:GLU:HG2	3:3:40:VAL:N	2.36	0.40
1:1:169:TRP:CZ3	1:1:171:GLU:HG3	2.56	0.40
3:3:66:GLU:HA	3:3:69:GLN:NE2	2.36	0.40
1:1:67:PHE:CD1	3:3:43:LEU:HD11	2.56	0.40
3:3:108:THR:O	3:3:179:VAL:HG12	2.20	0.40
1:1:47:THR:O	1:1:48:MET:HB3	2.21	0.40

There are no symmetry-related clashes.

## 5.3 Torsion angles ⓘ

### 5.3.1 Protein backbone ⓘ

In the following table, the Percentiles column shows the percent Ramachandran outliers of the chain as a percentile score with respect to all X-ray entries followed by that with respect to entries of similar resolution.

The Analysed column shows the number of residues for which the backbone conformation was analysed, and the total number of residues.

Mol	Chain	Analysed	Favoured	Allowed	Outliers	Percentiles
1	1	271/281 (96%)	241 (89%)	23 (8%)	7 (3%)	7 15

Continued on next page...

*Continued from previous page...*

Mol	Chain	Analysed	Favoured	Allowed	Outliers	Percentiles	
2	2	254/263 (97%)	209 (82%)	30 (12%)	15 (6%)	2	3
3	3	236/238 (99%)	211 (89%)	21 (9%)	4 (2%)	11	27
4	4	51/68 (75%)	45 (88%)	5 (10%)	1 (2%)	9	22
All	All	812/850 (96%)	706 (87%)	79 (10%)	27 (3%)	5	10

All (27) Ramachandran outliers are listed below:

Mol	Chain	Res	Type
1	1	10	ALA
1	1	24	ASN
2	2	34	GLY
2	2	198	ASN
3	3	197	ASN
4	4	55	GLU
1	1	273	GLN
2	2	90	GLY
2	2	137	LEU
2	2	149	GLY
2	2	162	SER
2	2	164	SER
2	2	194	LEU
2	2	260	ALA
3	3	58	VAL
3	3	96	SER
2	2	159	PRO
2	2	170	ARG
2	2	208	ASN
1	1	99	GLN
1	1	131	ASN
2	2	73	LYS
3	3	224	LEU
1	1	265	PRO
1	1	275	ILE
2	2	87	SER
2	2	112	CYS

### 5.3.2 Protein sidechains ⓘ

In the following table, the Percentiles column shows the percent sidechain outliers of the chain as a percentile score with respect to all X-ray entries followed by that with respect to entries of similar resolution.

The Analysed column shows the number of residues for which the sidechain conformation was analysed, and the total number of residues.

Mol	Chain	Analysed	Rotameric	Outliers	Percentiles	
1	1	237/243 (98%)	226 (95%)	11 (5%)	33	62
2	2	219/226 (97%)	204 (93%)	15 (7%)	20	41
3	3	206/206 (100%)	198 (96%)	8 (4%)	39	69
4	4	47/56 (84%)	44 (94%)	3 (6%)	22	45
All	All	709/731 (97%)	672 (95%)	37 (5%)	29	56

All (37) residues with a non-rotameric sidechain are listed below:

Mol	Chain	Res	Type
1	1	14	VAL
1	1	106	PHE
1	1	114	LEU
1	1	135	GLN
1	1	152	ASP
1	1	161	THR
1	1	178	MET
1	1	190	SER
1	1	209	THR
1	1	269	THR
1	1	270	THR
2	2	9	TYR
2	2	69	VAL
2	2	79	TRP
2	2	80	TRP
2	2	104	THR
2	2	129	GLU
2	2	150	ASP
2	2	186	ILE
2	2	197	ASN
2	2	198	ASN
2	2	208	ASN
2	2	217	ARG
2	2	233	TYR
2	2	238	THR
2	2	262	HIS
3	3	78	SER
3	3	80	THR
3	3	149	MET
3	3	166	LEU

*Continued on next page...*

*Continued from previous page...*

Mol	Chain	Res	Type
3	3	185	THR
3	3	218	ASN
3	3	227	ASP
3	3	228	THR
4	4	52	LYS
4	4	54	THR
4	4	60	ILE

Some sidechains can be flipped to improve hydrogen bonding and reduce clashes. All (23) such sidechains are listed below:

Mol	Chain	Res	Type
1	1	41	GLN
1	1	96	GLN
1	1	99	GLN
1	1	125	GLN
1	1	132	GLN
1	1	135	GLN
1	1	164	ASN
1	1	202	ASN
2	2	70	GLN
2	2	72	GLN
2	2	111	GLN
2	2	119	GLN
2	2	174	ASN
2	2	197	ASN
2	2	208	ASN
3	3	12	GLN
3	3	42	ASN
3	3	57	ASN
3	3	69	GLN
3	3	88	GLN
3	3	197	ASN
3	3	218	ASN
3	3	234	GLN

### 5.3.3 RNA ⓘ

There are no RNA molecules in this entry.

## 5.4 Non-standard residues in protein, DNA, RNA chains [i](#)

There are no non-standard protein/DNA/RNA residues in this entry.

## 5.5 Carbohydrates [i](#)

There are no carbohydrates in this entry.

## 5.6 Ligand geometry [i](#)

2 ligands are modelled in this entry.

In the following table, the Counts columns list the number of bonds (or angles) for which Mogul statistics could be retrieved, the number of bonds (or angles) that are observed in the model and the number of bonds (or angles) that are defined in the chemical component dictionary. The Link column lists molecule types, if any, to which the group is linked. The Z score for a bond length (or angle) is the number of standard deviations the observed value is removed from the expected value. A bond length (or angle) with  $|Z| > 2$  is considered an outlier worth inspection. RMSZ is the root-mean-square of all Z scores of the bond lengths (or angles).

Mol	Type	Chain	Res	Link	Bond lengths			Bond angles		
					Counts	RMSZ	$\# Z  > 2$	Counts	RMSZ	$\# Z  > 2$
5	PLM	1	301	-	14,17,17	0.66	0	14,17,17	2.07	4 (28%)
6	MYR	4	101	4	14,14,15	0.59	0	12,13,15	1.50	3 (25%)

In the following table, the Chirals column lists the number of chiral outliers, the number of chiral centers analysed, the number of these observed in the model and the number defined in the chemical component dictionary. Similar counts are reported in the Torsion and Rings columns. '-' means no outliers of that kind were identified.

Mol	Type	Chain	Res	Link	Chirals	Torsions	Rings
5	PLM	1	301	-	-	0/13/15/15	0/0/0/0
6	MYR	4	101	4	-	0/11/12/13	0/0/0/0

There are no bond length outliers.

All (7) bond angle outliers are listed below:

Mol	Chain	Res	Type	Atoms	Z	Observed(°)	Ideal(°)
6	4	101	MYR	C11-C10-C9	-3.04	98.82	114.53
5	1	301	PLM	C6-C5-C4	-2.31	102.61	114.53
6	4	101	MYR	C14-C13-C12	-2.25	95.73	113.44
6	4	101	MYR	C12-C11-C10	-2.04	103.99	114.53
5	1	301	PLM	C3-C2-C1	2.16	124.22	112.58

*Continued on next page...*

*Continued from previous page...*

Mol	Chain	Res	Type	Atoms	Z	Observed(°)	Ideal(°)
5	1	301	PLM	C5-C4-C3	2.92	129.61	114.53
5	1	301	PLM	C7-C6-C5	5.58	143.33	114.53

There are no chirality outliers.

There are no torsion outliers.

There are no ring outliers.

2 monomers are involved in 14 short contacts:

Mol	Chain	Res	Type	Clashes	Symm-Clashes
5	1	301	PLM	12	0
6	4	101	MYR	2	0

## 5.7 Other polymers [i](#)

There are no such residues in this entry.

## 5.8 Polymer linkage issues [i](#)

There are no chain breaks in this entry.

## 6 Fit of model and data ⓘ

### 6.1 Protein, DNA and RNA chains ⓘ

In the following table, the column labelled ‘#RSRZ> 2’ contains the number (and percentage) of RSRZ outliers, followed by percent RSRZ outliers for the chain as percentile scores relative to all X-ray entries and entries of similar resolution. The OWAB column contains the minimum, median, 95<sup>th</sup> percentile and maximum values of the occupancy-weighted average B-factor per residue. The column labelled ‘Q< 0.9’ lists the number of (and percentage) of residues with an average occupancy less than 0.9.

Mol	Chain	Analysed	<RSRZ>	#RSRZ>2	OWAB(Å <sup>2</sup> )	Q<0.9
1	1	273/281 (97%)	-0.06	5 (1%) 71 74	29, 45, 63, 90	0
2	2	256/263 (97%)	0.05	5 (1%) 68 71	30, 44, 58, 97	0
3	3	238/238 (100%)	-0.14	2 (0%) 87 88	29, 43, 58, 69	0
4	4	55/68 (80%)	-0.17	1 (1%) 71 74	31, 40, 50, 60	0
All	All	822/850 (96%)	-0.06	13 (1%) 74 77	29, 44, 60, 97	0

All (13) RSRZ outliers are listed below:

Mol	Chain	Res	Type	RSRZ
2	2	8	GLY	7.2
1	1	9	ALA	4.4
2	2	263	GLN	4.1
2	2	9	TYR	3.0
2	2	235	PRO	2.8
1	1	130	GLN	2.7
3	3	238	GLN	2.5
1	1	202	ASN	2.4
1	1	128	THR	2.4
4	4	69	ASN	2.4
2	2	262	HIS	2.2
1	1	281	THR	2.2
3	3	76	GLU	2.1

### 6.2 Non-standard residues in protein, DNA, RNA chains ⓘ

There are no non-standard protein/DNA/RNA residues in this entry.



### 6.3 Carbohydrates [i](#)

There are no carbohydrates in this entry.

### 6.4 Ligands [i](#)

In the following table, the Atoms column lists the number of modelled atoms in the group and the number defined in the chemical component dictionary. LLDF column lists the quality of electron density of the group with respect to its neighbouring residues in protein, DNA or RNA chains. The B-factors column lists the minimum, median, 95<sup>th</sup> percentile and maximum values of B factors of atoms in the group. The column labelled 'Q< 0.9' lists the number of atoms with occupancy less than 0.9.

Mol	Type	Chain	Res	Atoms	RSCC	RSR	LLDF	B-factors( $\text{\AA}^2$ )	Q<0.9
5	PLM	1	301	18/18	0.93	0.20	1.58	0,0,0,0	0
6	MYR	4	101	15/16	0.73	0.34	-	90,103,120,120	0

### 6.5 Other polymers [i](#)

There are no such residues in this entry.